



HAL
open science

BIOFILM FORMATION AND GENETIC DIVERSITY OF LACTOBACILLUS PLANTARUM STRAINS ORIGINATED FROM FRANCE AND UKRAINE

Nataliia Limanska, Andrii Merlich, Mykola Galkin, Nataliia Vasylieva, Yvan Choiset, Tetiana Ivanytsia, Maryna Zlatohurska, Volodymyr Ivanytsia, Jean-Marc Chobert, Thomas Haertlé

► To cite this version:

Nataliia Limanska, Andrii Merlich, Mykola Galkin, Nataliia Vasylieva, Yvan Choiset, et al.. BIOFILM FORMATION AND GENETIC DIVERSITY OF LACTOBACILLUS PLANTARUM STRAINS ORIGINATED FROM FRANCE AND UKRAINE. *Journal of Microbiology, Biotechnology and Food Sciences*, 2019, 8 (6), pp.1326-1331. 10.15414/jmbfs.2019.8.6.1326-1331 . hal-02563195

HAL Id: hal-02563195

<https://hal.inrae.fr/hal-02563195v1>

Submitted on 5 May 2020

HAL is a multi-disciplinary open access archive for the deposit and dissemination of scientific research documents, whether they are published or not. The documents may come from teaching and research institutions in France or abroad, or from public or private research centers.

L'archive ouverte pluridisciplinaire **HAL**, est destinée au dépôt et à la diffusion de documents scientifiques de niveau recherche, publiés ou non, émanant des établissements d'enseignement et de recherche français ou étrangers, des laboratoires publics ou privés.



Distributed under a Creative Commons Attribution 4.0 International License

BIOFILM FORMATION AND GENETIC DIVERSITY OF *LACTOBACILLUS PLANTARUM* STRAINS ORIGINATED FROM FRANCE AND UKRAINE

Nataliia Limanska*¹, Andrii Merlich^{1,2}, Mykola Galkin¹, Nataliia Vasylieva¹, Yvan Choiset², Tetiana Ivanytsia¹, Maryna Zlatohurska¹, Volodymyr Ivanytsia¹, Jean-Marc Chobert², Thomas Haertlé²

Address(es): PhD Nataliia Limanska,

¹ Odessa National I.I. Mechnikov University (ONU), Biological Faculty, Microbiology, Virology and Biotechnology Department, Dvorianska str., 2, 65082, Odessa, Ukraine, phone number: +38 048 731 71 51.

² French National Institute for Agriculture Research (INRA), UR1268, Biopolymères, Interactions, Assemblages, BP 71627, rue de la Géraudière, 44316 Nantes Cedex 3, France.

*Corresponding author: limanska@onu.edu.ua

doi: 10.15414/jmbfs.2019.8.6.1326-1331

ARTICLE INFO

Received 4. 8. 2018
Revised 11. 2. 2019
Accepted 14. 2. 2019
Published 1. 6. 2019

Regular article



ABSTRACT

Evaluation of *Lactobacillus plantarum* strains perspective for plant protection or fermentation of food of plant origin should include tests on abilities to attach to plant surfaces and to form biofilms. Comparing RAPD-profiles with these properties and also with geographical origin of the strains is necessary to find out the possibility of rapid selection of the strains and tracking their dissemination. Biofilm formation and RAPD-PCR profiles of 30 strains of *L. plantarum* isolated from grape must and pickles originated from France and Ukraine were compared. All isolates were able to attach to *Lepidium sativum* seedlings and form biofilms of different types. Amount of attached cells varied from $(7.8 \pm 0.2) \times 10^4$ to $(2.1 \pm 0.3) \times 10^3$ CFU/cm². The most developed biofilms were formed on shoots, leaves, seed coat shells. On roots this ability was strain dependent: the majority of French isolates (77.0%) formed separated microcolonies without developed matrix layer. Among Ukrainian isolates, 47.1% of the strains showed the same tendency, and in 41.2% of the strains individual attached cells without formation of microcolonies were observed. The level of initial attachment of bacterial cells to roots did not coincide with the level of subsequent formation of biofilms. Gene *plnA* was detected in 28.1% of isolates. All *plnA* possessing strains except the one formed microcolonies or biofilms with developed matrix. Lactobacilli could eliminate the biofilms of *Agrobacterium tumefaciens* pJZ from tomato roots in 75.0 – 100% of tested samples depending on a strain and method of inoculation. No clear association between the geographical origin of the *L. plantarum* strains and clustering by RAPD-PCR analysis was found. Two strains with high level of biofilm formation were grouped in one subcluster.

Keywords: *Lactobacillus plantarum*, biofilms, *plnA* locus, RAPD-PCR

INTRODUCTION

L. plantarum is one of the most well studied lactobacilli colonizing plants (Hammes and Hertel, 2006). Presence of *L. plantarum* in must at detectable levels depended on the origin of the samples. In grapes from Greece vineyards *L. plantarum* dominated during the middle and final stages of fermentation even in the samples in which initial populations of lactic acid bacteria (LAB) were below the detection limit (Nisitou et al., 2015). In samples from South Africa wines *L. plantarum* was the dominant species in grape juice, but could not be detected during the later stages of wine production (du Plessis et al., 2004). In samples from Bordeaux vineyards (France) *L. plantarum* were revealed on grape on the day of harvest at a concentration of 2 cells/ml but after they could not be found anymore. In samples from another French wine-producing region – Cognac, *L. plantarum* were isolated on the first day of wine fermentation at a concentration of 10^4 cells/ml, but as in the previous case, the population after decreased below the detectable level (Lafon-Lafourcade et al., 1983). Some *L. plantarum* strains from grape must together with *Oenococcus oeni* were proposed for development of starter cultures for the controlled process of malolactic fermentation improving special organoleptic characteristics of certain wines (Bauer and Dicks, 2004; Bravo-Ferrada et al., 2013; Testa et al., 2014).

L. plantarum from fermenting plant material were characterized by strong antagonistic activity (Ben Omar et al., 2008; Knoll et al., 2008; Singh and Ramesh, 2008; Piasecka-Jozwiak et al., 2013). Antagonistic properties of LAB are widely used in food fermentation (Ben Omar et al., 2008; Singh and Ramesh, 2008; Con and Karasu, 2009), probiotics (Martins et al., 2013) and become promising for plant protection (Visser et al., 1986; Trias et al., 2008; Hoda et al., 2011; Lutz et al., 2012). It could be hypothesized that being the representatives of normal plant microbiota lactobacilli (Hammes and Hertel, 2006) could colonize plants and protect them from phytopathogens. Adhesion of

L. plantarum is well studied on a model of epithelial cells (Tallon et al., 2006; Velez et al., 2007). But there is scarce information about the attachment of lactobacilli to plant surfaces. Reina et al. (2002) compared adhesion of bacteria from several genera to fresh cucumber fruit surfaces. *Salmonella typhimurium* and *Staphylococcus aureus* surprisingly adsorb to cucumber surfaces at higher levels than *L. plantarum*. Also the reported levels of adhesion of *L. plantarum* were lower for dewaxed fruits (Reina et al., 2002). Tests on ability to attach and to form biofilms on plant surfaces should be carried out with the strains intended for plant protection or fermentation of food products of plant origin.

Strains of *L. plantarum* were characterized by their high diversity within the species that can be revealed by Random Amplification of Polymorphic DNA (RAPD)-PCR typing (Ben Omar et al., 2008; Pisano et al., 2011; Bravo-Ferrada et al., 2013). The results of RAPD-analysis may be used for development of primers for detection of *L. plantarum* strains (Galanis et al., 2015), to track the survival of lactobacilli during their consumption as probiotics (Mahenthiralingam et al., 2009) or to find out the ways of dissemination of lactobacilli during globalization processes (Song et al., 2016). Analysis of genetic diversity of *L. plantarum* strains from France and Ukraine will allow to establish whether RAPD-analysis could be helpful to reveal the geographical origin of the strains from two distant regions of the Europe. These data could be implemented in development of methods tracking the dissemination of starter or probiotic cultures important for food industry, medicine or plant protection. Moreover, investigations of possible association between the useful technological properties, such as biofilm formation, and RAPD-profiles are necessary to find out the possibility of rapid evaluation of the strains perspective for plant protection or food fermentation.

The aim of the present work was to study the diversity of *L. plantarum* strains originated from France and Ukraine comparing their RAPD-PCR profiles and ability to form biofilms.

MATERIAL AND METHODS

Bacterial strains

Thirteen strains of *L. plantarum* isolated in France from grape must and seventeen *L. plantarum* strains isolated in Ukraine from must and pickles were included in the experimental set up (Tab 1).

Strains were stored at -80°C in a Collection of Bacterial Cultures of Odessa National I.I. Mechnikov University (ONU). MRS medium (de Man et al., 1960) and standard conditions (37°C , 24-48 h) were used for cultivation.

Phytopathogenic strain *Agrobacterium tumefaciens* pJZ labeled with GFP was kindly provided by Dr. Clay Fuqua (USA) and Dr. Igor Golovlev (Sweden). Agrobacteria were cultivated in LB broth (Bertani, 1951) at 28°C and stored at -80°C in 30% glycerol.

Table 1 Origin of the strains used in this study

Strain	Source of isolation	Country of isolation
<i>L. plantarum</i> ONU 12, ONU 311, ONU 312, ONU 313, ONU 333, ONU 335, ONU 337, ONU 339, ONU 340, ONU 342, ONU 345, ONU 348, ONU 349, ONU 350	Grape must	Ukraine
<i>L. plantarum</i> ONU 351, ONU 352, ONU 353, ONU 354, ONU 355, ONU 356, ONU 357, ONU 359, ONU 362, ONU 363, ONU 364, ONU 365, ONU 471	Grape must	France
<i>L. plantarum</i> ONU 472, ONU 475	Sauerkraut	Ukraine
<i>L. plantarum</i> ONU 476	Fermented pickled tomatoes	Ukraine
<i>L. plantarum</i> UCM B-2709, UCM B-2694	Reference strains, Ukrainian Collection of Microorganisms	Ukraine

Test plants

Seeds of garden cress *Lepidium sativum* L. var. Azhur were sterilized with 25% of H_2O_2 for 60 sec and washed three times with sterile distilled water (SDW). After, seeds were brought into sterile Petri dishes with wet filter paper and left for three days at $20-24^{\circ}\text{C}$ to germinate. Seedlings of garden cress were used in fast screening of *L. plantarum* strains for ability of attachment and biofilm formation.

Seeds of tomatoes *Lycopersicon esculentum* Mill. var. Ballada were sterilized as described above and left to germinate for 7 days. Being a classical model of studying crown gall pathogenesis, tomato plants were used in experiments with competitive adhesion and biofilm formation of *L. plantarum* and plant pathogen *Agrobacterium tumefaciens* pJZ.

Attachment and biofilm formation

LAB cultures were cultivated overnight in MRS broth at 37°C till the concentration of 10^8 CFU/ml measured with spectrophotometer SmartSpec Plus (Bio-Rad, USA).

Attachment of bacteria to *Lepidium sativum* L. plants was studied by incubation of sterile root fragments with LAB cultures for 1 h. After incubation, roots were washed two times in SDW, triturated in 10 mM HEPES, pH 7.5, and the resulted suspensions were inoculated on MRS plates and incubated 48 h at 37°C (Brisset et al., 1991). Totally 10 root fragments from each independent experiment were plated on LB agar to prove sterility and checked after 24 h of incubation at 37°C for presence of bacterial or fungal growth.

Seedlings and *L. plantarum* cultures were also placed into the sterile plastic wells and incubated at 37°C overnight to allow biofilm formation. After, the seedlings were treated with 96% ethanol for 15 min to fix the biofilms and stained with 0.1% acridine orange for 5 min. Biofilms were observed on roots, stems, leaves and seed coat shells using a Primo Star PC, Carl Zeiss microscope, with a total magnification x600 and photographed with Olympus DCM (3.0 M pixels) camera. Three independent experiments for each strain were carried out, 10 images in each experiment per strain were analyzed.

Competitive adhesion and biofilm formation

Competition between *L. plantarum* and plant pathogen on a step of attachment and biofilm formation was studied on an example of *Agrobacterium tumefaciens* pJZ carrying *gfp* gene encoding green fluorescent protein kindly provided by Dr. Clay Fuqua (USA) and Dr. Igor Golovlev (Sweden). *L. plantarum* strains with the best abilities to biofilm formation were included in the experimental set up.

As pathogenic agrobacteria preferentially penetrate plants via root system (Burr and Otten, 1999), roots of tomato seedlings as a model of surface of host plant

were used. Three variants of experiment were carried out: (1) simultaneous inoculation of roots with lactobacilli and agrobacteria, (2) inoculation with lactobacilli with addition of agrobacteria after *Lactobacillus* biofilms have been formed, (3) inoculation with agrobacteria with subsequent treatment of their biofilms with lactobacilli. In case of competition experiments, 1×10^8 CFU/ml of each strain (overnight cultures) were simultaneously added to tomato seedlings in sterile 48 well polystyrene plates and left for 24 h of incubation at 28°C . In the second variant, *L. plantarum* strains were added together with 1 ml of MRS medium (100 μl of overnight culture), and after 24 h of incubation the medium was substituted for 1 ml of LB with 100 μl of overnight agrobacterial culture followed by the next 24 h of incubation. In the third variant, agrobacteria in LB medium were added to roots, and after 24 h substituted for lactobacilli left for the next 24 h of incubation.

After incubation, seedlings (20-24 in each variant) were analyzed by fluorescent microscopy performed by the method of Barahona et al. (2010) with some modifications. Roots were excised, stained with 0.1% crystal violet for 40 s, transferred on glass slides and analyzed with optical Carl Zeiss epifluorescence microscope system with 20x planachromat objective and Olympus DCM camera. Images of the biofilms on plant roots surfaces were obtained with BP490 filter set, a 505 nm dichroic filter and 530 nm long-pass emitter (EO530).

RAPD-PCR

DNA from the tested *L. plantarum* strains was isolated with the kit "DNA sorb" (Amplisens, Russia) and amplified with the primer M13 (Ben Omar et al., 2008) in 35 cycles of 94°C for 1 min, 45°C for 1 min and 72°C for 2 min (with pre-heating at 94°C for 3 min and post-elongation time for 5 min at 72°C). A thermocycler "MyCycler" was used (BioRad, USA). The products were separated by agarose electrophoresis (1% of agarose in Tris-acetate buffer), and the sizes of amplicons were measured using the GelAnalyzer2010 program.

The phylogenetic tree was constructed using the program Mega5 (Tamura et al., 2007, 2011) basing on the method of maximum likelihood (ML) (Tamura et al., 2011) and the Jukes-Cantor model (Jukes and Cantor, 1969). The statistical significance of the order of branching of the tree has been estimated using bootstrap analysis by constructing of the 1000 alternative replicas, or trees.

PCR amplification of *plnA* gene

Amplification was carried out according to Ben Omar et al. (2008) with primers to *plnA* gene described in Diep et al. (1996) and Remiger et al. (1996). Detection of products was carried out as described above.

RESULTS

Attachment and biofilm formation

All strains exhibited the ability to attach to *Lepidium sativum* seedling surfaces and to form biofilms. The intensity of biofilm formation was higher on shoots, leaves and seed coat shells (Fig1, D, E, F, Tab 2). In case of inoculation with all of the tested strains the biofilms were well-formed with microcolonies embedded in developed matrix layer.

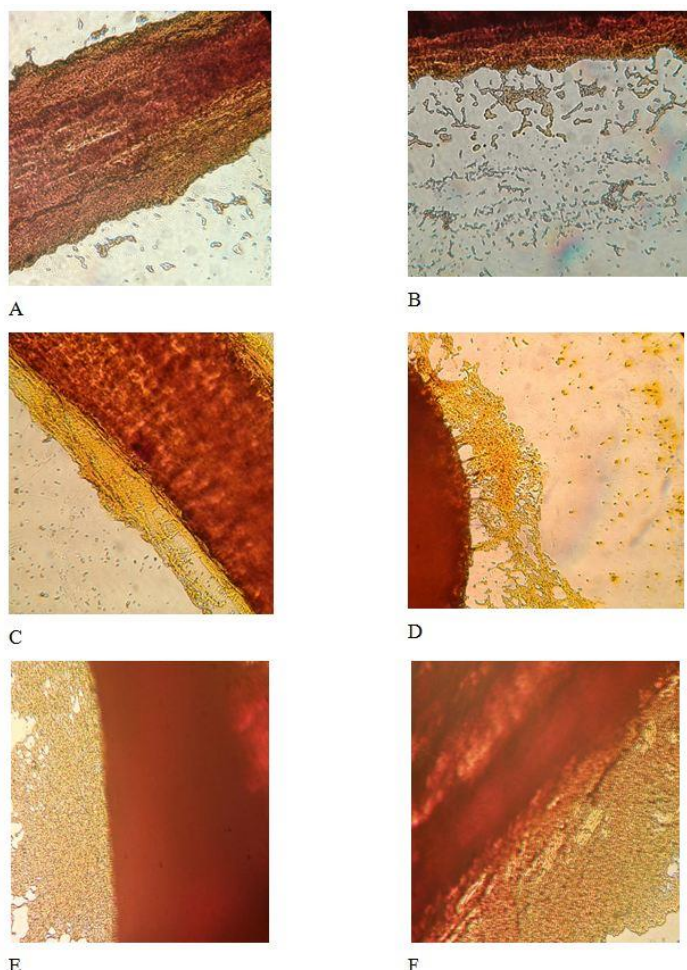


Figure 1 Biofilms of *L. plantarum* strains on *Lepidium sativum*: A – *L. plantarum* ONU 335 on a root (individual attached cells without formation of microcolonies); B – *L. plantarum* ONU 345 on a root (individual well-formed microcolonies); C – *L. plantarum* ONU 333 on a root (well-formed biofilm with gaps in the structure); D – *L. plantarum* ONU 12 on a seed coat shell (well-formed biofilm with microcolonies embedded in developed matrix); E – *L. plantarum* ONU 12 on a leaf (well-formed biofilm with microcolonies embedded in developed matrix); F – *L. plantarum* ONU 333 on a shoot (well-formed biofilm with microcolonies embedded in developed matrix).

Opposite, on roots the level of biofilm formation was lower and depended on a strain (Fig 1, A, B, C, Tab 2).

The majority of French isolates had tendency to form separated well-formed microcolonies without the developed matrix layer (Tab 2). Individual well-structured microcolonies or only individual attached cells were observed in almost equal numbers of Ukrainian isolates. Only three strains among tested – *L. plantarum* ONU 12, ONU 333 and ONU 355, covered roots with well-formed biofilms, but opposite to upper plant parts, biofilm maturation was not regular and gaps in the structure were observed.

As all the tested strains formed biofilms of equal level on upper parts of the plants, selection of strains with adhesive characteristics perspective for plant protection would rather include screening for attachment and biofilm formation on roots that on shoots, leaves or seeds. According to this reason, further experiments were carried out on plant roots. The level of initial attachment of bacterial cells to roots did not coincide with the ability of isolates to subsequent formation of biofilms (Tab 3).

Table 2 Amount of *Lactobacillus plantarum* strains (%) with different characteristics of biofilms on roots of *Lepidium sativum* L.

Origin of the strains	Characteristics of biofilms							
	on shoots, leaves and seed coat shells				on roots			
	well-formed with microcolonies embedded in developed matrix layer		well-formed biofilm with gaps in the structure		individual well-formed microcolonies		individual attached cells without microcolonies	
	amount of the strains (%)	name of the strains	amount of the strains (%)	name of the strains	amount of the strains (%)	name of the strains	amount of the strains (%)	name of the strains
France	100%	ONU 351, 352, 353, 354, 355, 356, 357, 359, 362, 363, 364, 365, 471	7.6%	ONU 355	77.0%	ONU 352, 353, 354, 356, 357, 359, 362, 363, 364, 471	15.4%	ONU 351, 365
Ukraine	100%	ONU 12, 311, 312, 313, 333, 335, 337, 339, 340, 342, 345, 348, 349, 350, 472, 475, 476	11.7%	ONU 12, 333	47.1%	ONU 311, 312, 313, 340, 342, 345, 349, 350	41.2%	ONU 335, 337, 339, 348, 472, 475, 476
Reference strains	100%	UCM B-2709, UCM B-2694	-	-	100%	UCM B-2709, B-2694	-	-

Table 3 Ability of *Lactobacillus plantarum* strains to attach to roots of *Lepidium sativum* L.

Strain	Amount of attached cells, CFU/cm ²		
	France	Ukraine	
<i>L. plantarum</i> ONU 351	(2.1 ± 0.3) x 10 ³	<i>L. plantarum</i> ONU 12	(6.5 ± 0.2) x 10 ⁴
<i>L. plantarum</i> ONU 352	(3.5 ± 0.1) x 10 ⁴	<i>L. plantarum</i> ONU 311	(3.4 ± 0.1) x 10 ⁴
<i>L. plantarum</i> ONU 353	(2.6 ± 0.5) x 10 ⁴	<i>L. plantarum</i> ONU 312	(2.8 ± 0.2) x 10 ⁴
<i>L. plantarum</i> ONU 354	(4.1 ± 0.2) x 10 ⁴	<i>L. plantarum</i> ONU 313	(3.6 ± 0.3) x 10 ⁴
<i>L. plantarum</i> ONU 355	(7.8 ± 0.2) x 10 ⁴	<i>L. plantarum</i> ONU 333	(5.4 ± 0.4) x 10 ⁴
<i>L. plantarum</i> ONU 356	(2.8 ± 0.3) x 10 ⁴	<i>L. plantarum</i> ONU 335	(4.3 ± 0.2) x 10 ³
<i>L. plantarum</i> ONU 357	(3.5 ± 0.7) x 10 ⁴	<i>L. plantarum</i> ONU 337	(2.8 ± 0.5) x 10 ³
<i>L. plantarum</i> ONU 359	(4.9 ± 0.4) x 10 ⁴	<i>L. plantarum</i> ONU 339	(3.2 ± 0.3) x 10 ³
<i>L. plantarum</i> ONU 362	(5.1 ± 0.5) x 10 ⁴	<i>L. plantarum</i> ONU 340	(4.1 ± 0.2) x 10 ⁴
<i>L. plantarum</i> ONU 363	(3.2 ± 0.2) x 10 ⁴	<i>L. plantarum</i> ONU 342	(3.5 ± 0.2) x 10 ⁴
<i>L. plantarum</i> ONU 364	(3.1 ± 0.1) x 10 ⁴	<i>L. plantarum</i> ONU 345	(3.6 ± 0.7) x 10 ⁴
<i>L. plantarum</i> ONU 365	(1.5 ± 0.4) x 10 ⁴	<i>L. plantarum</i> ONU 348	(2.7 ± 0.3) x 10 ⁴

<i>L. plantarum</i> ONU 471	(3.7 ± 0.3) × 10 ⁴	<i>L. plantarum</i> ONU 349	(4.5 ± 0.6) × 10 ⁴
Reference strains		<i>L. plantarum</i> ONU 350	(1.6 ± 0.4) × 10 ⁴
<i>L. plantarum</i> UCM B-2709	(3.7 ± 0.3) × 10 ⁴	<i>L. plantarum</i> ONU 472	(3.5 ± 0.5) × 10 ⁴
<i>L. plantarum</i> UCM B-2694	(3.1 ± 0.1) × 10 ⁴	<i>L. plantarum</i> ONU 475	(2.9 ± 0.2) × 10 ⁴
		<i>L. plantarum</i> ONU 476	(4.8 ± 0.5) × 10 ³

Level of attachment varied from (7.8 ± 0.2) × 10⁴ to (2.1 ± 0.3) × 10³ CFU/cm² and depended on a strain.

From nine strains forming slight biofilms, only five strains were characterized by low adhesion to garden cress roots, with amount of attached cells from 2.1 × 10³ to 4.8 × 10³ CFU/cm². Others demonstrated the same level of attachment as the strains that formed microcolonies and well-developed biofilms (Tab 3).

Gene *plnA* was found in 28.1% of all studied isolates (*L. plantarum* ONU 333, 342, 345, 348, 349, 350, 355, 362, 364). All *plnA* possessing strains except ONU 348 were characterized by formation of well-developed microcolonies and biofilms. Strains *L. plantarum* ONU 333 and ONU 355 with the highest level of biofilm formation were *plnA*-positive.

Competitive adhesion

Treatment of biofilms of *A. tumefaciens* pJZ on roots of tomato seedlings with suspensions of lactobacilli (*L. plantarum* ONU 12, ONU 333 and ONU 355) resulted in complete disruption of the pathogen biofilms. No *A. tumefaciens* pJZ cells were found on roots (Fig 3).

If agrobacteria were added to already formed biofilms of *L. plantarum* ONU 355, some cells of pathogens could integrate into the biofilm in 25% of tested samples (Fig 3). But treatment with suspensions of *L. plantarum* ONU 12 and *L. plantarum* ONU 333 completely eliminated the pathogen (Fig 3).

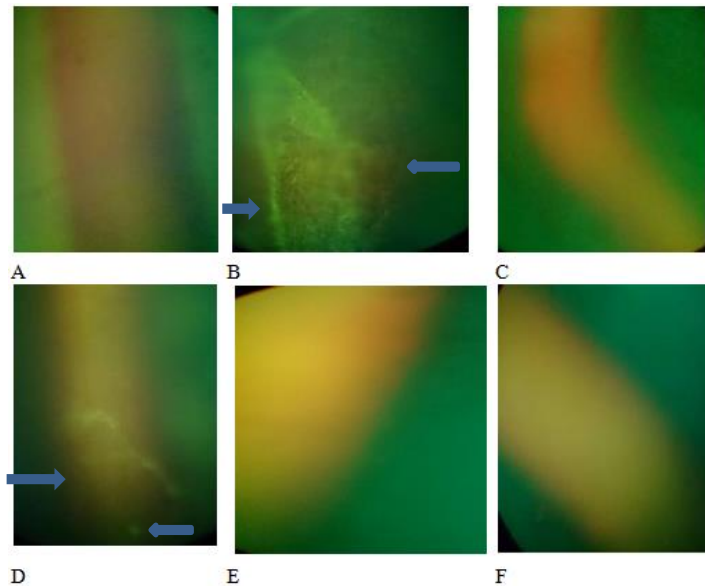


Figure 3 Competitive adhesion of *L. plantarum* and *A. tumefaciens* pJZ: A – negative control (inoculation with *L. plantarum* 12); B – positive control (inoculation with *A. tumefaciens* pJZ, developed biofilm of fluorescent GFP-expressing cells of the pathogen covers all the root surface, pointed with arrows); C – treatment of *A. tumefaciens* pJZ biofilms with *L. plantarum* ONU 355 (no fluorescent cells of the pathogen); D – addition of *A. tumefaciens* pJZ to biofilm of *L. plantarum* ONU 355 (fluorescent cells of the pathogen on root surface, pointed with arrows); E – addition of *A. tumefaciens* pJZ to biofilm of *L. plantarum* ONU 12 (no fluorescent cells of the pathogen); F – simultaneous inoculation with *L. plantarum* ONU 333 and *A. tumefaciens* pJZ (no fluorescent cells of the pathogen)

Simultaneous inoculation of test plant roots with lactobacilli and agrobacteria also demonstrated the protective effect of *L. plantarum* (Fig 3). In case of the strains *L. plantarum* ONU 12 and ONU 355 complete elimination of agrobacteria was observed. *A. tumefaciens* pJZ formed mixed biofilms with *L. plantarum* ONU 333 in 16.7%, and 83.3% root samples inoculated with this strain remained free from the pathogen.

RAPD-PCR profiles

All studied strains of *L. plantarum* after the construction of a phylogenetic tree have been referred to three clusters A, B and C (Fig 4).

The majority of strains has been included in the cluster A, which was divided into five subclusters (A1 - A5). Most of the strains belonged to the subcluster A1 (Fig 4). No association with the geographical origin of the strains was observed in this cluster. Thus, the subcluster A1.1 included four strains from Ukraine – ONU 339,

313, 311 and 349, and three strains from France – ONU 359, 354 and 356. Reference strains (*L. plantarum* UCM B2709 and *L. plantarum* UCM B2694) were also found in this subcluster. A similar situation was observed for the subcluster A1.2, which included strains ONU 353, 362, 364, 471 (France), and ONU 476, 333 (Ukraine) (Fig 4).

Most of the internal nodes of subcluster A1 of the phylogenetic tree were confirmed by the statistical significance of the order of branching at the level 57-65%.

The subcluster A4 was the second large subcluster by the number of classified strains. As in the previous case, the formation of groups did not reflect the geographical origins of the strains (Fig 4). The statistical significance of the order of branching for nodes of this subcluster was slightly smaller – 28-46%. The significance of the branching <50% indicates that these strains would belong to different subspecies and increasing of the sample will form separate clusters.

The high value of statistical significance during the bootstrap analysis was noted for the subcluster A5 containing strains *L. plantarum* ONU 12 (Ukraine) and ONU 355 (France). A distinctive feature of this cluster was the ability of the strains to form well developed biofilms (see Tab 2).

The subclusters A2 and A3 included two strains (Fig 4), and the statistical significance of branching order for them was minimal (4-6%).

As the result of the study of the phylogenetic tree topology, two separate clusters - B and C were identified (Fig 4). Significance of the order of branching internal nodes – 51% and 33% respectively, was the reason of their separation from all other strains. These clusters contained the strains isolated only in Ukraine.

DISCUSSION

Presented results show the high capability of the studied *L. plantarum* strains to attach to shoots and leaves of *Lepidium sativum* L. seedlings and strain-dependent ability to attach to roots. These data are in agreement with the hypothesis of Hammes and Hertel (2006) who suggested that owing to their high potential to form extracellular matrix, lactobacilli could be the components of the biofilms on plant surfaces or even be able to initiate biofilm formation (Hammes and Hertel, 2006). This hypothesis was based on the investigation of Morris et al. (1997) who revealed that 10-66% of the total cultivable microorganisms from biofilms on plant surfaces are represented by Gram-positive bacteria. Biofilms, the same as in case of this study, were found on all parts of the leaves – margin, base, upper and lower surfaces. In nature, biofilms on leaves are composed of exopolymer matrix and various microbial morphotypes – bacteria, filamentous fungi and yeasts (Morris et al., 1997), whereas in the studied case lactobacilli were able to form a monospecies biofilm in absence of all other microorganisms.

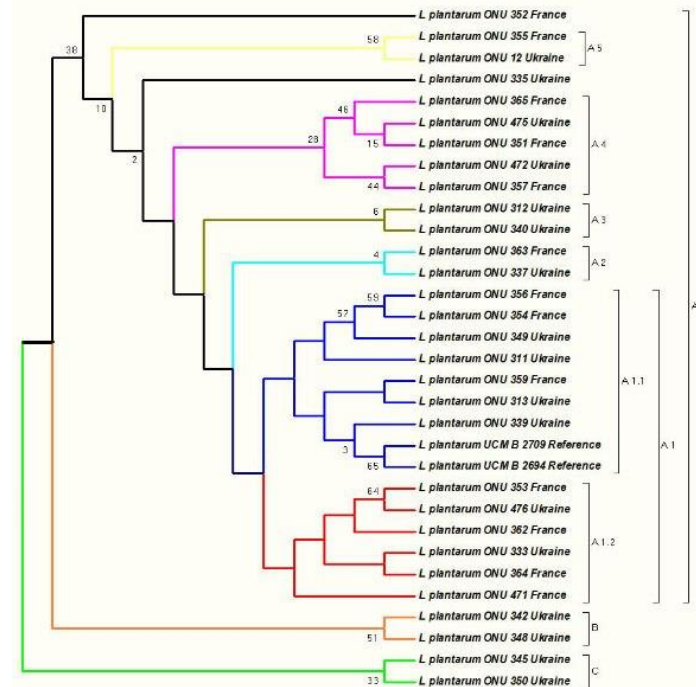


Figure 4 The phylogenetic tree of the tested *L. plantarum* strains built on the results of RAPD-PCR using the method of maximum likelihood and the Jukes-Cantor model. Numerals show a statistically significant branching order (in %) determined by a bootstrap analysis for 1000 alternative replicas

The lower levels of biofilm formation on roots coincide with the scarce evidences about the occurrence of LAB in rhizosphere (Hammes and Hertel, 2006). The same concerns soil (Fhoula et al., 2013), although some authors described soil as a common source for the isolation of LAB including lactobacilli (Chen et al., 2005; Yanagida et al., 2006). *L. plantarum* was found in rhizosphere of olive trees and desert truffles in Tunisia (Fhoula et al., 2013) and in rhizosphere of *Hibiscus esculentum* in Nigeria (Oyeyiola et al., 2013). Our investigations showed the possibility of *L. plantarum* to attach to roots of seedlings on example of *Lepidium sativum*. The capability to form biofilms on roots was lower than in case of shoots and leaves. Whereas the ability to form biofilms on the upper parts of the plants was equally high for all studied *L. plantarum* strains, biofilm formation on the roots appeared strain-specific.

In experiments of Calasso et al. (2013) strain DC400 of *L. plantarum* cultivated on a medium supplemented with chemically synthesized PInA significantly increased the capability to form biofilms on polystyrene pegs and to attach to Caco-2 human colon carcinoma cell line. Such results together with the investigation of exoproteome of the studied strain enabled authors to conclude that the adhesion and biofilm formation were mediated by the peptide pheromone PInA (Calasso et al., 2013). In our experiments, indeed, only one strain with *plnA* in its genome (*L. plantarum* ONU 348) exhibited low level of biofilm formation. Other *plnA* possessing strains formed microcolonies or biofilms with developed matrix. These results indicate that strains carrying *plnA* also had the better ability to form biofilms on plant root surfaces. *L. plantarum* ONU 12 possessing no *plnA* gene was an exclusion - bacteria of this isolate formed well-developed biofilms despite of the absence of the gene. Describing the succession of LAB in fermenting cucumbers, Singh and Ramesh (2008) pointed out the time-dependent emergence of PInA producers during the late stages of fermentation. Together with pediococci, PInA producers were prevalent in population of bacteriocinogenic strains (Singh and Ramesh, 2008). In our study the percentage of potential PInA producers among the strains constituted 28.1%. Lactobacilli could interfere the formation of biofilms by plant pathogen on an example of *A. tumefaciens* pJZ. The effect was strain dependent and resulted in complete elimination of pathogens from tomato roots in 75.0 – 100% of tested samples depending on a method of inoculation. Antagonistic action of lactobacilli against some phytopathogenic bacteria – *Xanthomonas campestris*, *Pseudomonas syringae*, *Erwinia carotovora*, have been demonstrated by well-diffusion method and on test plants by estimation of disease symptoms (Visser et al., 1986; Trias et al., 2008; Dalirsaber et al., 2012). We found out that inhibition of the pathogen could occur already on a step of attachment and biofilm formation – the first step of disease pathogenesis. Lactobacilli could compete with the phytopathogen, protect plant surface and disrupt mature biofilms of the pathogen. The results of RAPD-PCR analysis indicated that most of the studied *L. plantarum* strains from two different geographical regions – France and Ukraine, were similar to each other and formed a monophyletic group. However, the presence of clusters B and C indicated the existing paraphilia within the studied *L. plantarum*.

The high value of statistical significance during the boot strap analysis was noted for the subcluster A5 containing strains *L. plantarum* ONU 12 (Ukraine) and ONU 355 (France). A distinctive feature of this cluster was the high ability of the strains to form biofilms (see Tab 2).

Modern investigations have elucidated that *L. plantarum* strains cluster together according to their particular food niche (Siezen et al., 2010). In case of *L. plantarum* from ovine milk and cheese, analysis based on RAPD-PCR resulted in seven clusters showing the diversity between the isolates from the two mentioned sources. Moreover, the differences between the geographical regions of isolation could be clearly seen (Oneca et al., 2003). In case of *L. plantarum* from plants, isolates from maize fermented product potopoto could be divided into the two main groups (Ben Omar et al., 2008). Strains from must of grape gathered in one region of Italy appeared closely related (Spano et al., 2002). At the opposite, a significant genetic diversity of *L. plantarum* strains from Patagonian red wines was revealed (Bravo-Ferrada et al., 2013). When strains from two regions of grapevine cultivation in Greece were studied, most of the *L. plantarum* vineyard populations showed a high degree of genetic similarity. Two RAPD-PCR patterns were common between the studied regions, but no clustering according to the zone of origin was revealed (Nisitou et al., 2015). The same was observed in our study – the strains from two distant geographical zones could not be clearly clustered basing on the place of origin. Only clusters B and C with the fewest number of strains contained isolates from Ukraine only.

CONCLUSION

L. plantarum isolated from products of plant origin (grape must and pickles) exhibited ability to attach to *Lepidium sativum* seedlings and form biofilms. On roots isolates from France preferentially formed separated microcolonies without developed matrix layer, whereas almost half of Ukrainian isolates exhibited the attachment of individual cells without formation of microcolonies. Ability of the strains to attach to plant roots and to form biofilms did not coincide. Comparison of RAPD profiles and abilities to form biofilms showed no association with the geographical origin of the *L. plantarum* strains isolated in France and Ukraine. One subcluster – A5 – included two strains with the high level of biofilm

formation: *L. plantarum* ONU 12 (Ukraine) and ONU 355 (France). Since RAPD-typing could not find certain differences between strains from the two geographically distant zones, further investigations should be carried out to select a method of typing the isolates of *L. plantarum* to trace their origin. Lactobacilli could eliminate biofilms of the phytopathogen *A. tumefaciens* pJZ from tomato roots. Such antagonistic effect against pathogenic bacteria as well as ability to form developed biofilms on plant surfaces need further detailed investigation for possible practical implementation in plant protection and food industry.

Acknowledgments: This work was supported by a bilateral French-Ukrainian project “Dnipro” (2011-2012, 2015-2016) granted by the Ministry of Foreign and European Affairs of France and the Ministry of Education and Science of Ukraine, and by the individual grant for Andrii Merlich (Campus-France 2013-2017) supported by the French Embassy in Ukraine.

REFERENCES

- BARAHONA, E., NAVAZO, A., YOUSEF-CORONADO, F., AGUIRRE DE CÁRCER, D., MARTÍNEZ-GRANERO, F., ESPINOSA-URGEL, M., MARTÍN, M., RIVILLA, R. 2010. Efficient rhizosphere colonization by *Pseudomonas fluorescens* f113 mutants unable to form biofilms on abiotic surface. *Environm Microbiol*, 12(12), 3185-3195. <https://doi.org/10.1111/j.1462-2920.2010.02291.x>
- BAUER, R., DICKS, L.M.T. 2004. Control of malolactic fermentation in wine. A Review. *S. Afr. J. Enol. Vitic.*, 25(2), 74-88. <http://dx.doi.org/10.21548/25-2-2141>
- BEN OMAR, N., ABRIQUEL, H., KELEKE, S., VALENZUELA, A. S., MARTINEZ-CANAMERO, M., LOPEZ, R. L., ORTEGA, E., GALVEZ, A. 2008. Bacteriocin-producing *Lactobacillus* strains isolated from potopoto, a Congolese fermented maize product, and genetic fingerprinting of their plantaricin operons. *Int Journal Food Microbiol*, 127, 18-25. <https://doi.org/10.1016/j.ijfoodmicro.2008.05.037>
- BERTANI, G. 1951. Studies on lysogeny. I. The mode of phage liberation by lysogenic *Escherichia coli*. *J Bacteriol*, 62, 293-300.
- BRAVO-FERRADA, B. M., HOLLMANN, A., DELFEDERICO, L., VALDES LA HENS, D., CABALLERO, A., SEMORILE, L. 2013. Patagonian red wines: selection of *Lactobacillus plantarum* isolates as potential starter cultures for malolactic fermentation. *World J Microbiol Biotechnol*, 29, 1537-1549. <https://doi.org/10.1007/s11274-013-1337-x>
- BRISSET, M. N., RODRIGUEZ-PALENZUELA, P., BURR, T. J., COLLMER, A. 1991. Attachment, chemotaxis, and multiplication of *Agrobacterium tumefaciens* biovar 1 and biovar 3 on grapevine and pea. *Appl Environm Microbiol*, 57, 3178-3182.
- BURR, T. J., OTTEN, L. 1999. Crown gall of grape: biology and disease management. *Annu Rev Phytopathol*, 37, 53-80. <http://doi.org/10.1146/annurev.phyto.37.1.53>
- CALASSO, M., DI CAGNO, R., DE ANGELIS, M., CAMPANELLA, D., MINERVINI, F., GOBETTI, M. 2013. Effects of the peptide pheromone plantaricin A and cocultivation with *Lactobacillus sanfranciscensis* DPPMA174 on the exoproteome and the adhesion capacity of *Lactobacillus plantarum* DC400. *Appl Environ Microbiol*, 79, 2657-2669. <http://doi.org/10.1128/AEM.03625-12>
- CHEN, Y. S., YANAGIDA, F., SHINOHARA, T. 2005. Isolation and identification of lactic acid bacteria from soil using an enrichment procedure. *Lett Appl Microbiol*, 40, 195-200. <http://doi.org/10.1111/j.1472-765X.2005.01653.x>
- ÇON, A. H., KARASU, N. 2009. Determination of antagonistic starter cultures for pickle and olive fermentation processes. *Czech Journal of Food Sciences*, 27, 185-193.
- DALIRSABER, J. M., KHOSRO, I., GHASEMI, M. F., TABRIZI, S. S. KH. 2012. Antagonism of *Lactobacillus* species against *Xanthomonas campestris* isolated from different plants. *Journal of Applied Environmental and Biological Sciences*, 9, 480-484.
- DE MAN, J. C., ROGOSA, M., SHARPE, M. E. 1960. A medium for the cultivation of lactobacilli. *J Appl Bacteriol*, 23, 130-135. <https://doi.org/10.1111/j.1365-2672.1960.tb00188.x>
- DIEP, D. B., HAVARSTEIN, L. S., NES, I. F. 1996. Characterization of the locus responsible for bacteriocin production in *Lactobacillus plantarum* C11. *J Bacteriol*, 178, 4472-4483.
- DU PLESSIS, H. W., DICKS, L. M., PRETORIUS, I. S., LAMBRECHTS, M. G., DU TOIT, M. 2004. Identification of lactic acid bacteria isolated from South African brandy base wines. *Int J Food Microbiol*, 91, 19-29. [https://doi.org/10.1016/S0168-1605\(03\)00335-0](https://doi.org/10.1016/S0168-1605(03)00335-0)
- FHOULA, I., NAJJARI, A., TURKI, Y., JABALLAH, S., BOUDABOUS, A., OUZARI, H. 2013. Diversity and antimicrobial properties of lactic acid bacteria isolated from rhizosphere of olive trees and desert truffles of Tunisia. *Biomed Research International*, 2013:405708, Epub 2013 Sep 14. <https://doi.org/10.1016/j.ijfoodmicro.2008.05.037>
- GALANIS, A., KOURKOUTAS, Y., TASSOU, C.C., CHORIANOPOULOS, N. 2015. Detection and identification of probiotic *Lactobacillus plantarum*

- strains by Multiplex PCR using RAPD-derived primers. *Int J Mol Sci*, 16, 25141-25153. <https://doi.org/10.3390/ijms161025141>
- HAMMES, W. P., HERTEL, C. 2006. The genera *Lactobacillus* and *Carnobacterium*. In: Dworkin, M., Falkow, S., Rosenberg, E., Schleifer, K.-H., Stackebrandt, E. (ed), *The Prokaryotes. A Handbook on the Biology of Bacteria: Firmicutes, Cyanobacteria*, (Vol. 4). New York: Springer-Verlag, 1140 p. ISBN 978-0-387-30744-2.
- HODA, H. A., YOMNA, M. A., SHADIA, M. A.-A. 2011. *In vivo* efficacy of lactic acid bacteria in biological control against *Fusarium oxysporum* for protection of tomato plant. *Life Science Journal*, 8, 462-468.
- JUKES, T. H., CANTOR, C.R. 1969. Evolution of protein molecules. In: Munro, H. N. (ed), *Mammalian Protein Metabolism*. New York: Academic Press, 590 p. ISBN 9781483272900.
- KNOLL, C., DIVOL, B., DU TOIT, M. 2008. Genetic screening of lactic acid bacteria of oenological origin for bacteriocin-encoding genes. *Food Microbiol*, 25, 983-991. <http://doi.org/10.1016/j.fm.2008.06.010>
- LAFON-LAFOURCADE, S., CARRE, E., RIBEREAU-GAYON, P. 1983. Occurrence of lactic acid bacteria during the different stages of vinification and conservation of wines. *Applied and Environmental Microbiology*, 46, 874-880.
- LUTZ, M. P., MICHEL, V., MARTINEZ, C., CAMPS, C. 2012. Lactic acid bacteria as biocontrol agents of soil-borne pathogens. Biological control of fungal and bacterial plant pathogens. *International Organization for Biological and Integrated Control West Palaearctic Regional Section Bulletin*, 78, 285-288.
- MAHENTHIRALINGAM, E., MARCHBANK, A., DREVINEK, P., GARAIJOVA, I., PLUMMER, S. 2009. Use of colony-based bacterial strain typing for tracking the fate of *Lactobacillus* strains during human consumption. *BMC Microbiology*, 9(251). <https://doi.org/10.1186/1471-2180-9-251>
- MARTINS, E. M. F., RAMOS, A. M., VANZELA, E. S. L., STRINGHETA, P. C., DE OLIVEIRA PINTO, C. L., MARTINS, J. M. 2013. Products of vegetable origin: a new alternative for the consumption of probiotic bacteria. *Food Research International*, 51, 764-770. <https://doi.org/10.1016/j.foodres.2013.01.047>
- MORRIS, C. E., MONIER, J.-M., JACQUES, M.-A. 1997. Methods for observing microbial biofilms directly on leaf surfaces and recovering them for isolation of culturable microorganisms. *Appl Environ Microbiol*, 63, 1570-1576.
- NISITOU, A. A., DOUROU, D., FILIPPOUSI, M.-E., DIAMANTEA, E., FRAGKOULIS, P., TASSOU, C., BANILAS, G. 2015. Genetic and technological characterization of vineyard- and winery-associated lactic acid bacteria. *BioMed Research International*, Article ID 5082554 <http://dx.doi.org/10.1155/2015/508254>
- ONECA, M., IRIGOYEN, A., ORTIGOSA, M., TORRE, P. 2003. PCR and RAPD identification of *Lactobacillus plantarum* strains isolated from ovine milk and cheese. Geographical distribution of strains. *FEMS Microbiol Lett*, 227, 271-277. [https://doi.org/10.1016/S0378-1097\(03\)00691-8](https://doi.org/10.1016/S0378-1097(03)00691-8)
- OYEYIOLA, G. P., AREKEMASE, M. O., SULE, I. O., AGBABIKA, T. O. 2013. Rhizosphere bacterial flora of Okro (*Hibiscus esculentus*). *Science International (Lahore)*, 25, 273-276.
- PIASECKA-JOZWIAK, K., ROZMIERSKA, J., CHABLOWSKA, B., STECKA, K. M., SKAPSKA, S., KLISZCZ, M., SZKUDZINSKA-RZESZOWIAK, E. 2013. Starter cultures for lactic acid fermentation of sweet pepper, pattypan squash and tomatoes. *Polish Journal of Food and Nutrition Sciences*, 63, 95-102. <https://doi.org/10.2478/v10222-012-0068-2>
- PISANO, M. B., PATRIGNANI, F., COSENTINO, S., GUERZONI, M. E., FRANZ, C. M. A. P., HOLZAPFEL, W. H. 2011. Diversity and functional properties of *Lactobacillus plantarum*-group strains isolated from Italian cheese products. *Diary Science and Technology*, 91, 65-76. <https://doi.org/10.1051/dst/2010037>
- REINA, L. D., FLEMING, H. P., BREIDT, F. JR. 2002. Bacterial contamination of cucumber fruit through adhesion. *J Food Prot*, 65, 1881-1887. <https://doi.org/10.4315/0362-028X-65.12.1881>
- REMIGER, A., EHRMANN, M. A., VOGEL, R. F. 1996. Identification of bacteriocin genes in lactobacilli by polymerase chain reaction (PCR). *Syst Appl Microbiol*, 19, 28-34. [https://doi.org/10.1016/S0723-2020\(96\)80005-1](https://doi.org/10.1016/S0723-2020(96)80005-1)
- SIEZEN, R. J., TZENEVA, V. S., CASTIONI, A., WELS, M., PHAN, H. T. K., RADEMAKER, J. L. W., STARRENBURG, M. J. C., KLEEREBEZEM, M., MOLENAAR, D., VAN HYLCKAMA VLIET, J. E. T. 2010. Phenotypic and genomic diversity of *Lactobacillus plantarum* strains isolated from various environmental niches. *Environ Microbiol*, 12, 758-773. <https://doi.org/10.1111/j.1462-2920.2009.02119.x>
- SINGH, A. K., RAMESH, A. 2008. Succession of dominant and antagonistic lactic acid bacteria in fermented cucumber: insights from a PCR-based approach. *Food Microbiol*, 25, 278-287. <https://doi.org/10.1016/j.fm.2007.10.010>
- SONG, Y., SUN, Z., GUO, C., WU, Y., LIU, W., YU, J., MENGHE, B., YANG, R., ZHANG, H. 2016. Genetic diversity and population structure of *Lactobacillus delbrueckii* subspecies *bulgaricus* isolated from naturally fermented dairy foods. *Scientific Reports*, 6, 22704. <http://doi.org/10.1038/srep22704>
- SPANO, G., BENEDEUCE, L., TARANTINO, D., ZAPPAROLI, G., MASSA, S. 2002. Characterization of *Lactobacillus plantarum* from wine must by PCR species-specific and RAPD-PCR. *Lett Appl Microbiol*, 35, 370-374. <https://doi.org/10.1046/j.1472-765X.2002.01200.x>
- TALLON, R., ARIAS, S., BRESSOLLIER, P., URDACI, M. C. 2006. Strain- and matrix-dependent adhesion of *Lactobacillus plantarum* is mediated by proteinaceous bacterial compounds. *J Appl Microbiol*, 102, 442-451. <https://doi.org/10.1111/j.1365-2672.2006.03086.x>
- TAMURA, K., DUDLEY, J., NEI, M., KUMAR, S. 2007. MEGA4: Molecular Evolutionary Genetics Analysis (MEGA) software version 4.0. *Mol Biol Evol*, 24, 1596-1599. <https://doi.org/10.1093/molbev/msm092>
- TAMURA, K., PETERSON, D., PETERSON, N., STECHER, G., NEI, M., KUMAR, S. 2011. MEGA5: molecular evolutionary genetics analysis using maximum likelihood, evolutionary distance, and maximum parsimony methods. *Mol Biol Evol*, 28, 2731-2739. <https://doi.org/10.1093/molbev/msr121>
- TESTA, B., LOMBARDI, S.J., TREMONTE, P., SUCCI, M., TIPALDI, L., PANELLA, G., SORRENTINO, E., LORIZZO, M., COPPOLA, R. 2014. Biodiversity of *Lactobacillus plantarum* from traditional Italian wines. *J Microbiol Biotechnol* 30(8), 2299-2305. <https://doi.org/10.1007/s11274-014-1654-8>
- TRIAS, R., BAÑERAS, L., MONTESINOS, E., BADOSA, E. 2008. Lactic acid bacteria from fresh fruit and vegetables as biocontrol agents of phytopathogenic bacteria and fungi. *Int Microbiol*, 11, 231-236. <https://doi.org/10.2436/20.1501.01.66>
- VELEZ, M. P., DE KEERSMAECKER, S. C. J., VANDERLEYDEN, J. 2007. Adherence factors of *Lactobacillus* in the human gastrointestinal tract. *FEMS Microbiol Lett*, 276, 140-148. <https://doi.org/10.1111/j.1574-6968.2007.00908.x>
- VISSER, R., HOLZAPFEL, W. H., BEZUIDENHOUT, J. J., KOTZE, J. M. 1986. Antagonism of lactic acid bacteria against phytopathogenic bacteria. *Appl Environ Microbiol*, 52, 552-555.
- YANAGIDA, F., CHEN, Y. S., SHINOHARA, T. 2006. Searching for bacteriocin-producing lactic acid bacteria in soil. *J Gen Appl Microbiol*, 52, 21-28. <https://doi.org/10.2323/jgam.52.21>