



HAL
open science

Application of cost-benefit analysis to estimate the value of the protection function of forests against rockfalls

S. Dupire, M. Bruciamacchie

► To cite this version:

S. Dupire, M. Bruciamacchie. Application of cost-benefit analysis to estimate the value of the protection function of forests against rockfalls. XXIV IUFRO World Congress, Nov 2014, Salt Lake City, United States. pp.1, 2014. hal-02600331

HAL Id: hal-02600331

<https://hal.inrae.fr/hal-02600331v1>

Submitted on 16 May 2020

HAL is a multi-disciplinary open access archive for the deposit and dissemination of scientific research documents, whether they are published or not. The documents may come from teaching and research institutions in France or abroad, or from public or private research centers.

L'archive ouverte pluridisciplinaire **HAL**, est destinée au dépôt et à la diffusion de documents scientifiques de niveau recherche, publiés ou non, émanant des établissements d'enseignement et de recherche français ou étrangers, des laboratoires publics ou privés.

Application of a cost-benefit analysis to estimate the value of the protection function of forests against rockfalls

S. Dupire^{1,2}, M. Bruciamacchie³

How to economically quantify the protection against rockfalls naturally offered by mountain forest?



Forests offer several ecosystem services. In mountain areas, forests play an important role for the protection of human lives and issues against natural hazard such as rockfalls.

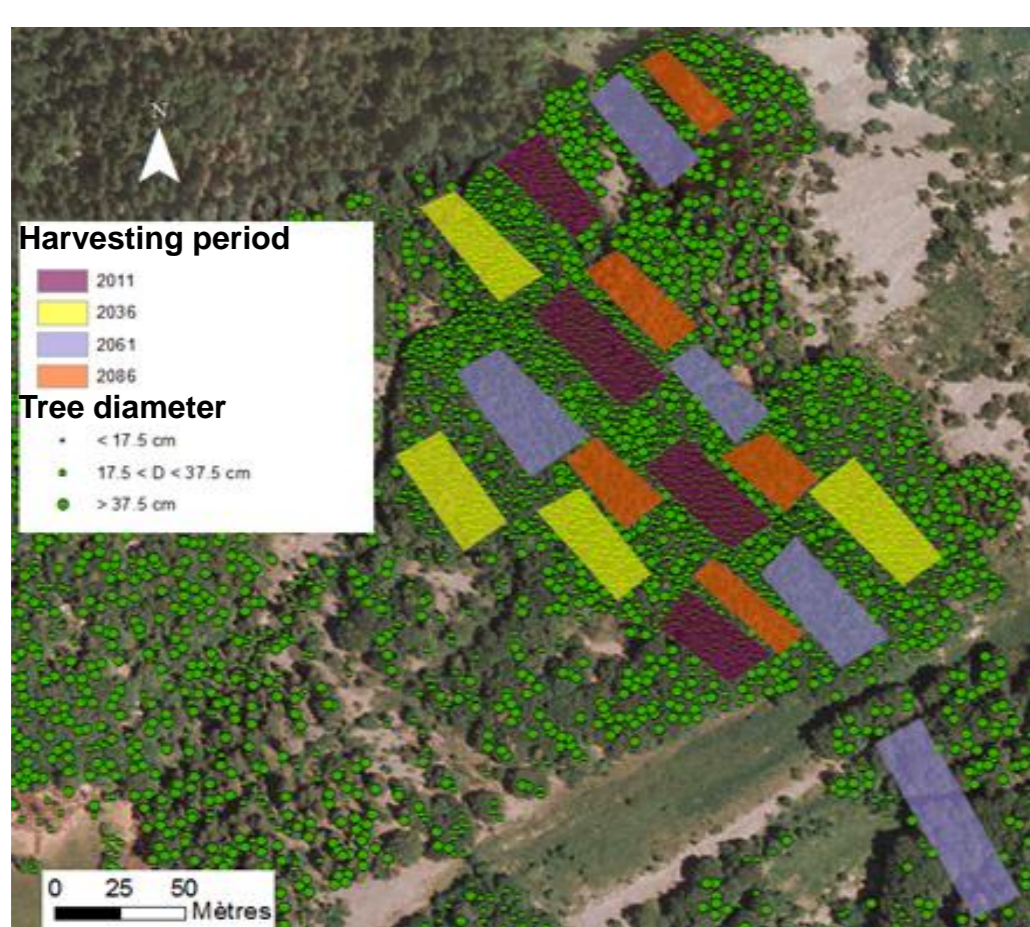
The aim of this study is to implement a method for the calculation of the economical value of this ecosystem service. Cost-benefit analysis has been adapted to this particular case.



1. TECHNICAL ANALYZES

FOREST DATA

- Stand structure**
- Tree density
 - Tree diameters
 - Tree height
 - Tree coordinates
 - Coniferous/deciduous
- Management scenarios**
- No management
 - Management to improve protection function



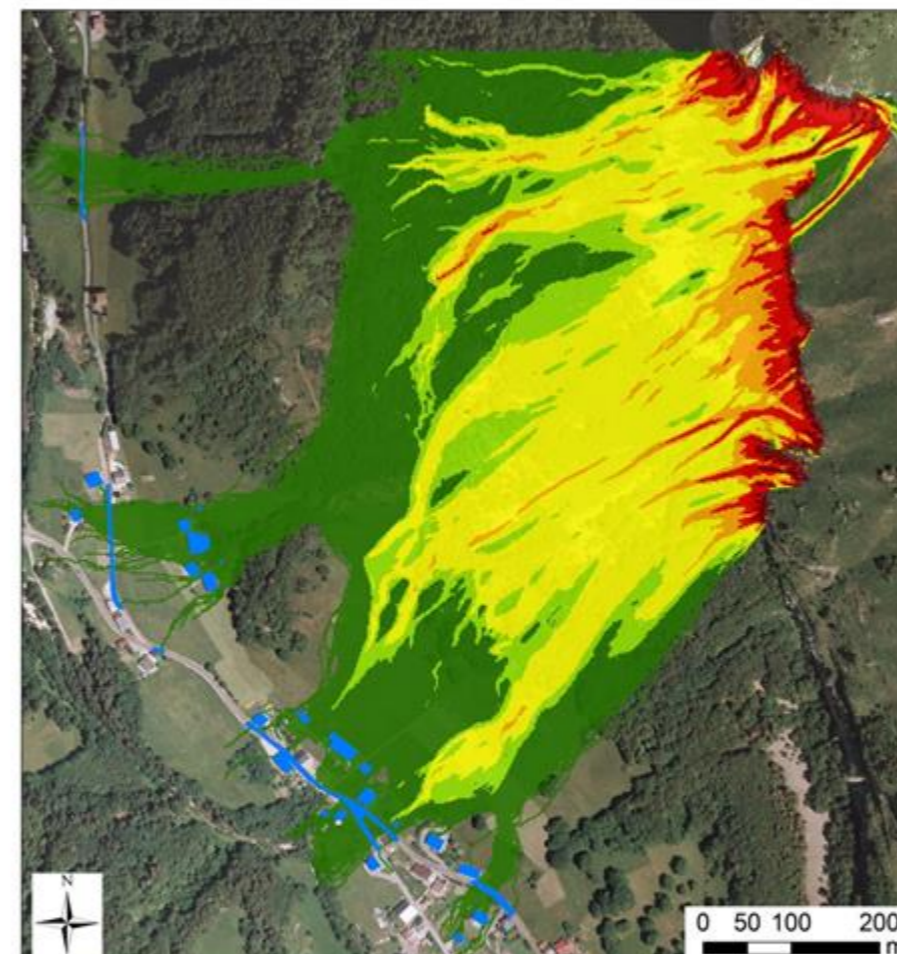
TOPOGRAPHY AND HAZARD DATA

- Topography:**
- DTM
 - Ground roughness
 - Soil type

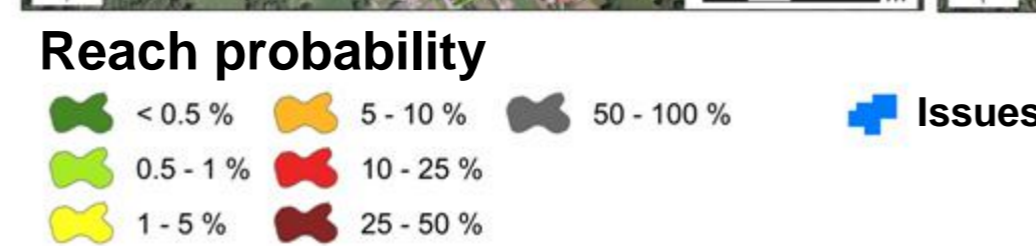
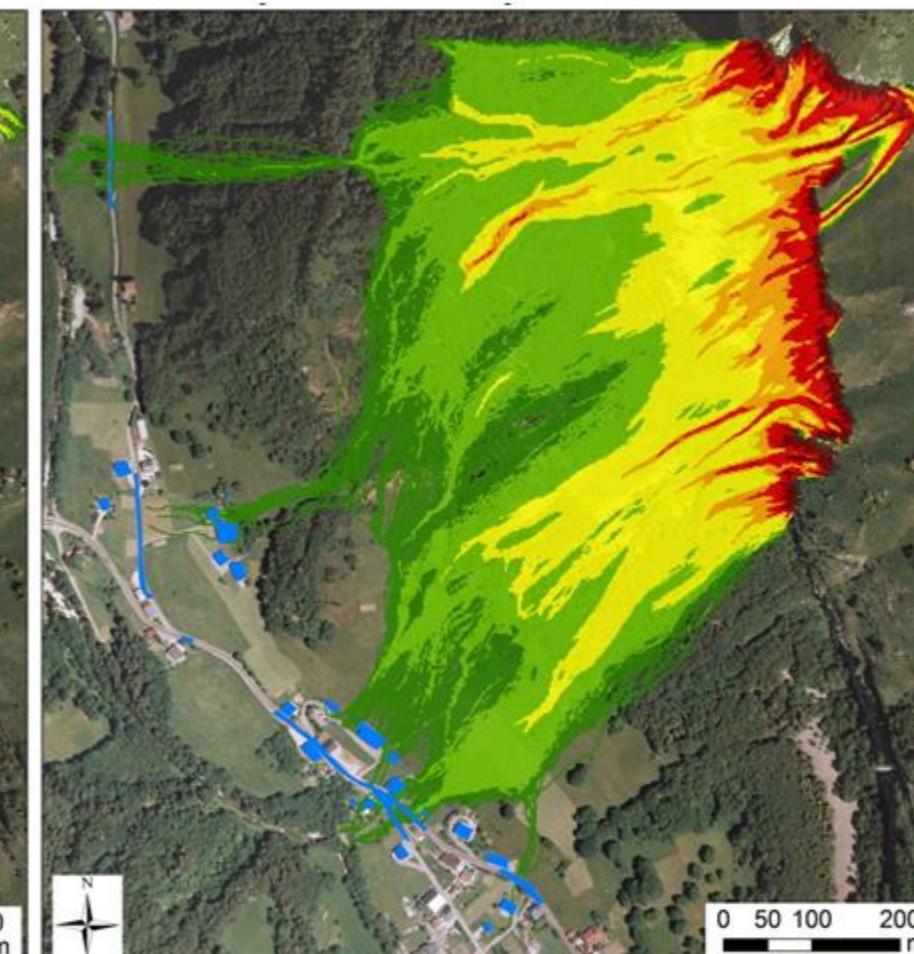
- Hazard:**
- Rock dimension
 - Rock density
 - Rock shape
 - Start probability
 - Propagation probability
 - Rock energy

Reach probability of the rock (ROCKYFOR3D)

Without forest



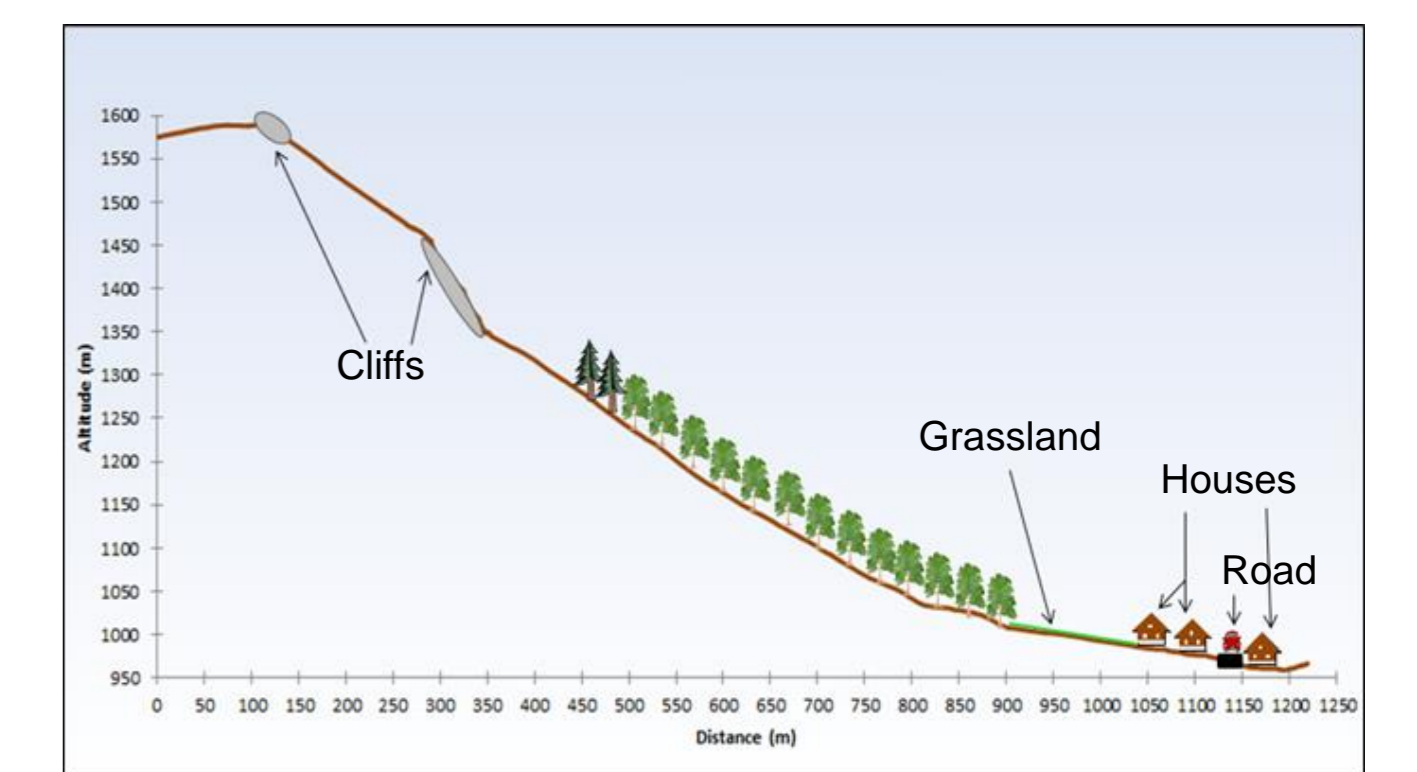
With forest



ISSUES DATA

- Material issues taken into account:**
- Houses, buildings... (Market value)
 - Railways (Traffic)
 - Roads (Traffic)

- Human lives**
- "Price" of the human life

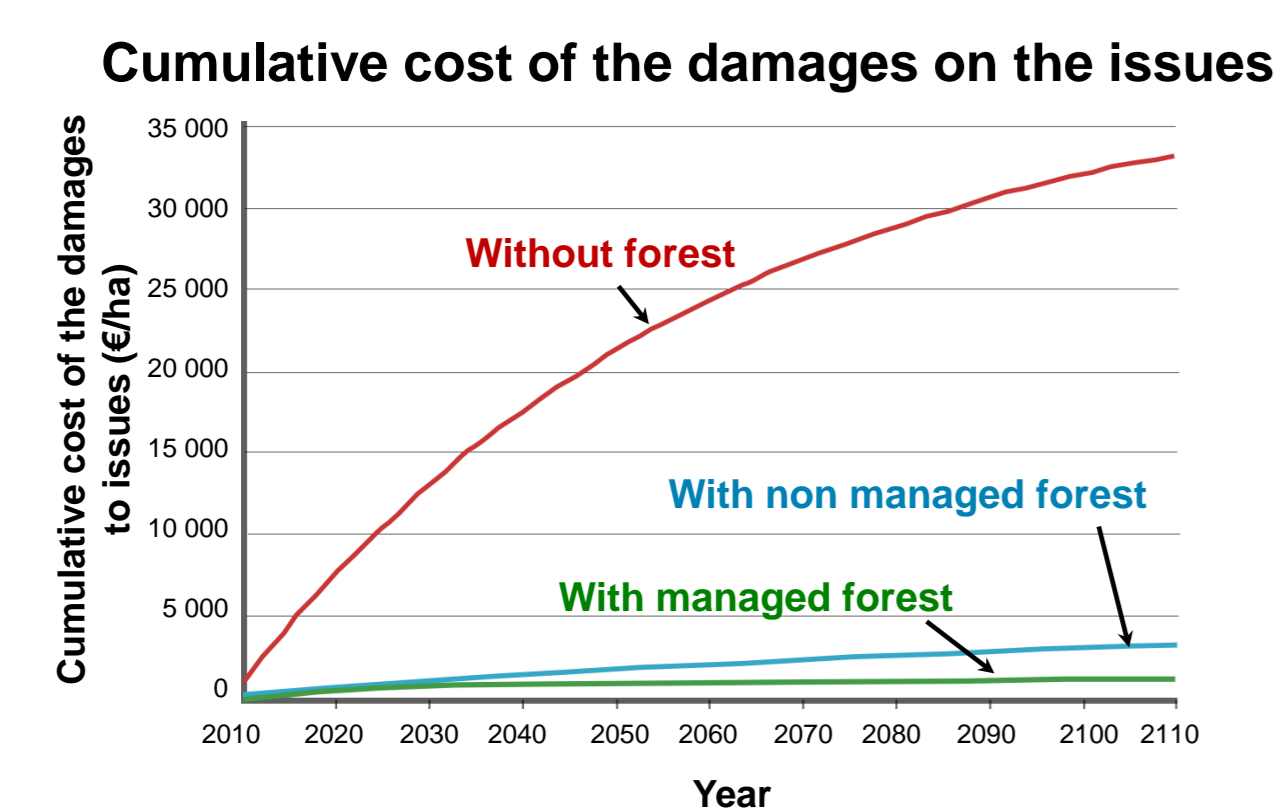


2. ECONOMICAL ANALYZES

ISSUE APPROACH: DAMAGES AVOIDED COST (DAC) METHOD

Calculate the cost of the potential damages according to different scenarios:

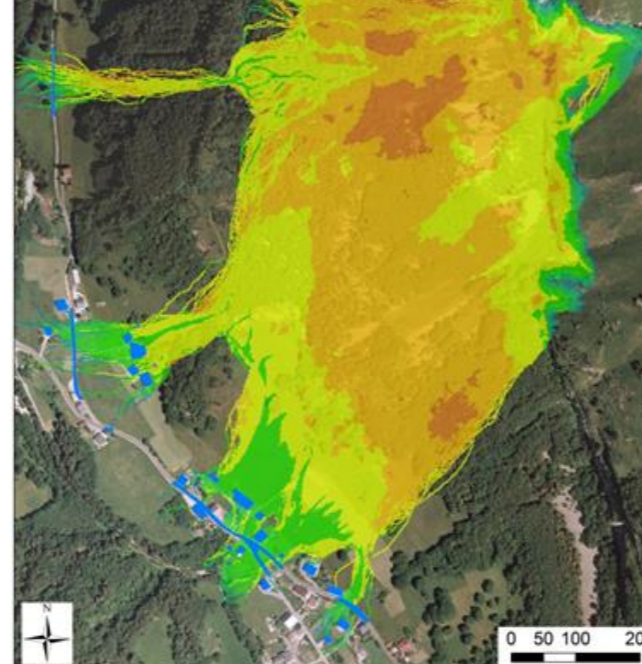
- Without forest
- With non managed forest
- With managed forest



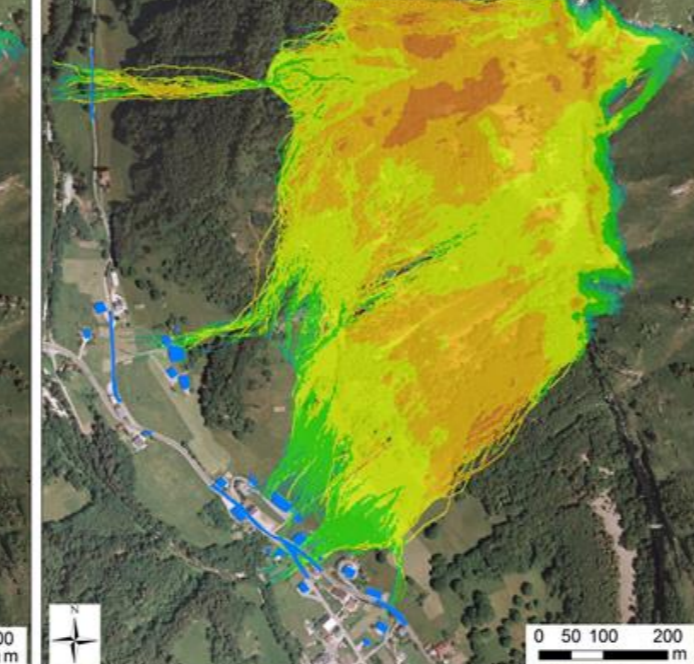
Value of the protection function against rockfall with DAC method =
 Damages without forest – damages with forest = **30 000 €/ha**

Maximum energy of the rock (ROCKYFOR3D)

Without forest



With forest

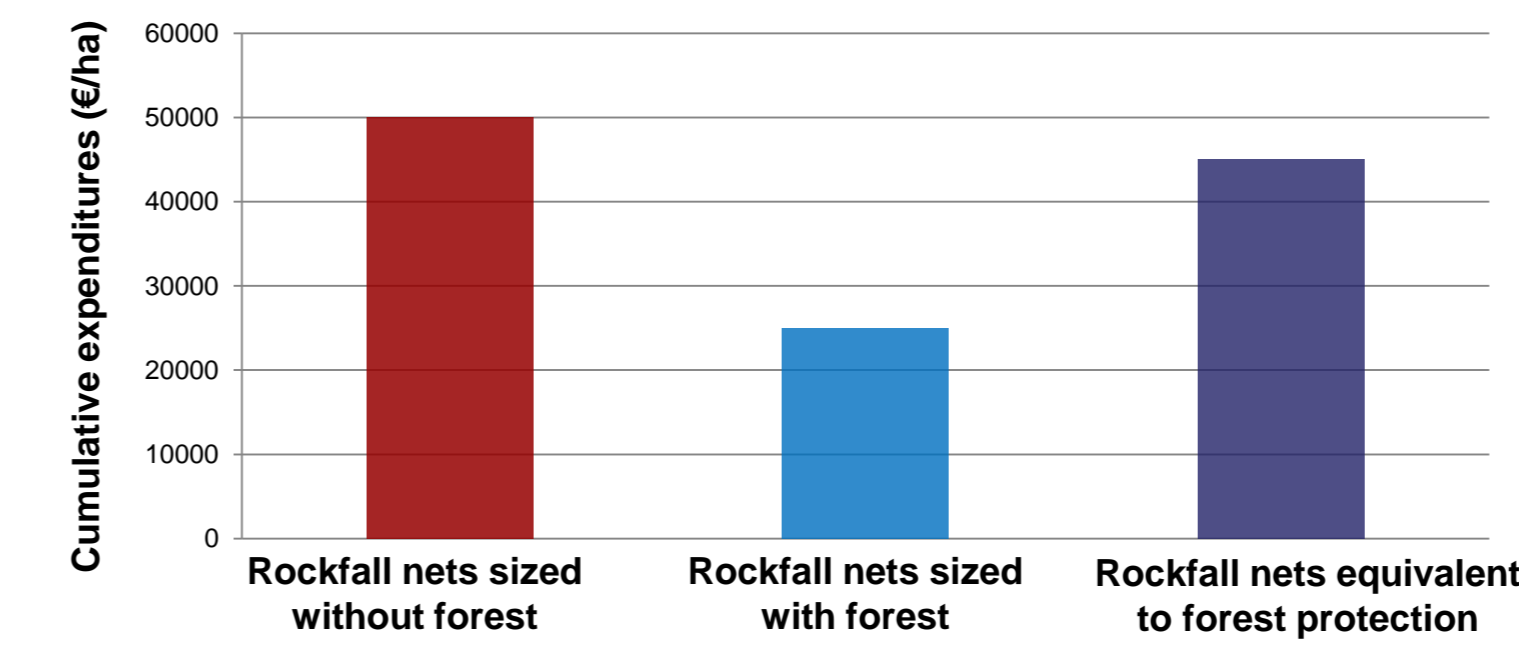


HAZARD APPROACH: SUBSTITUTE COST (SC) METHOD

Calculate the cost of a civil engineering structures equivalent to the protection offered by the forest. 3 scenarios are tested:

- Rockfall nets stopping 100% of the rocks, sized without taking into account the forest
- Rockfall nets stopping 100% of the rocks, sized taking into account the forest
- Rockfall nets offering the same protection than forest

Expenditures (investment + maintenance) on 100 years



Value of the protection function against rockfall with SC method =
 Cost of rockfall nets equivalent to forest protection: **45 000 €/ha**



Results and perspectives:

This study concerned 6 pilot areas (4 in France, 1 in Switzerland, 1 in Italy). The method is highly linked to the rockfall model called Rockyfor3D. The value of this ecosystem service can be calculated with a cost-benefit analysis. The DAC method is complex to realize but provides a good idea of the importance of the protection offered by the forest. SC method is easier to implement and can be very useful when forest and civil engineering are complementary (mainly on linear issues such as road and railways). On the 6 pilot areas, the calculated value varies from 6 000 €/ha (issue = small mountain road) to 100 000 €/ha (issue = college and residential area).