



**HAL**  
open science

## Presentation of a surface runoff susceptibility mapping method and test on the Lezarde catchment (Paris basin, France)

L.R. Lagadec, Pierre Patrice, B. Chazelle, Isabelle Braud, L. Moulin, J. Dehotin, E. Hauchard, Pascal Breil

### ► To cite this version:

L.R. Lagadec, Pierre Patrice, B. Chazelle, Isabelle Braud, L. Moulin, et al.. Presentation of a surface runoff susceptibility mapping method and test on the Lezarde catchment (Paris basin, France). EGU General Assembly, Apr 2016, Vienna, Austria. pp.1, 2016. hal-02605301

**HAL Id: hal-02605301**

**<https://hal.inrae.fr/hal-02605301>**

Submitted on 16 May 2020

**HAL** is a multi-disciplinary open access archive for the deposit and dissemination of scientific research documents, whether they are published or not. The documents may come from teaching and research institutions in France or abroad, or from public or private research centers.

L'archive ouverte pluridisciplinaire **HAL**, est destinée au dépôt et à la diffusion de documents scientifiques de niveau recherche, publiés ou non, émanant des établissements d'enseignement et de recherche français ou étrangers, des laboratoires publics ou privés.

# Presentation of a surface runoff susceptibility mapping method and test on the Lézarde catchment (Paris Basin, France)

L-R. Lagadec<sup>1,2</sup>; P. Patrice<sup>1</sup>; B. Chazelle<sup>2</sup>; I. Braud<sup>1</sup>; L. Moulin<sup>2</sup>; J. Dehotin<sup>2</sup>; E. Hauchard<sup>3</sup>; P. Breil<sup>1</sup> Contact: lilly-rose.lagadec@irstea.fr

<sup>1</sup> IRSTEA, HHLY, Hydrology-Hydraulic Department, Centre de Lyon-Villeurbanne, 5 rue de la Doua, 69626 Villeurbanne, France.

<sup>2</sup> SNCF Réseau, Engineering and Project Direction, 6 avenue François Mitterrand, 93574, La Plaine Saint Denis, France.

<sup>3</sup> Agglomeration community of Le Havre (CODAH), 19 rue Georges Braque 76085 Le Havre Cedex, France / UMR M2C 6143 CNRS Geology Department University of Rouen, France

## 1 Contexte



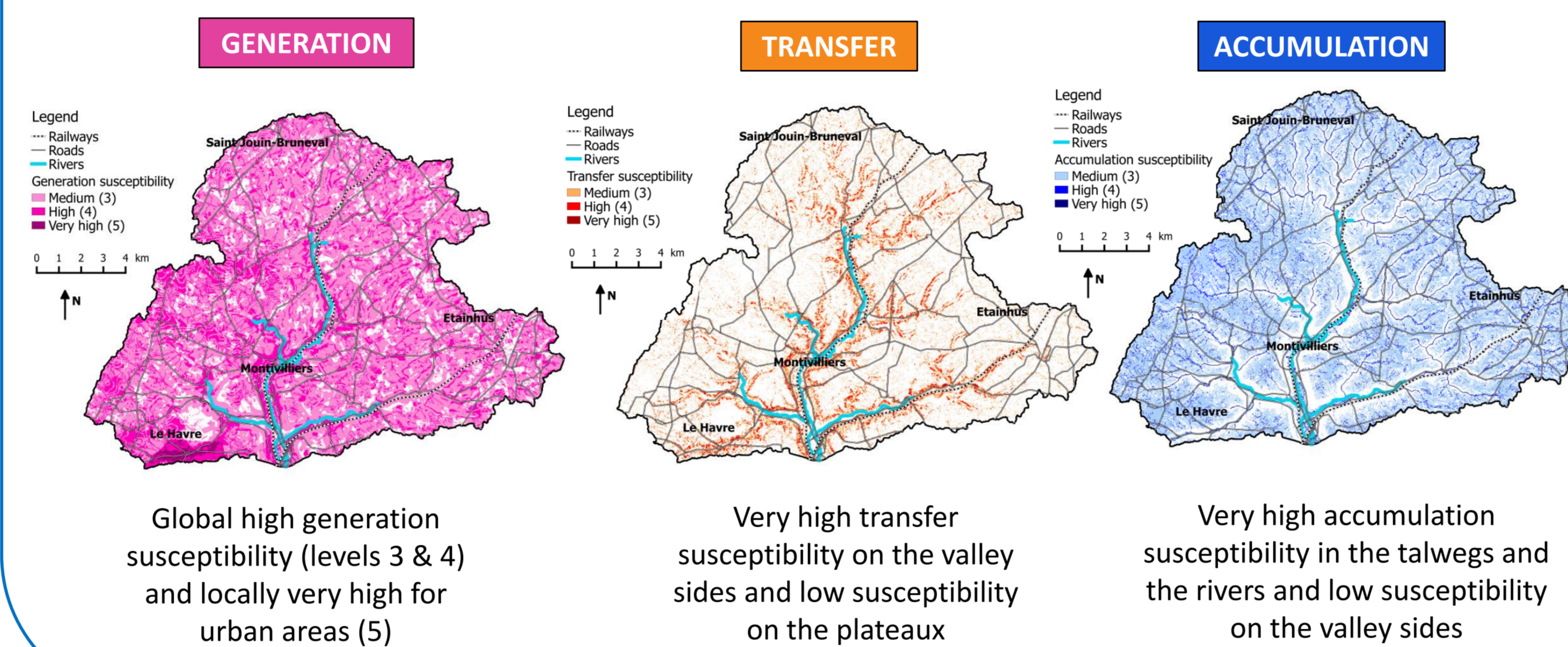
## 2 Challenge

Intense surface runoff occurs quickly and is difficult to measure on large territories, only limited observations are available

→ How to better know and understand the surface runoff hazard?

→ How to evaluate the relevance of the hazard representation method?

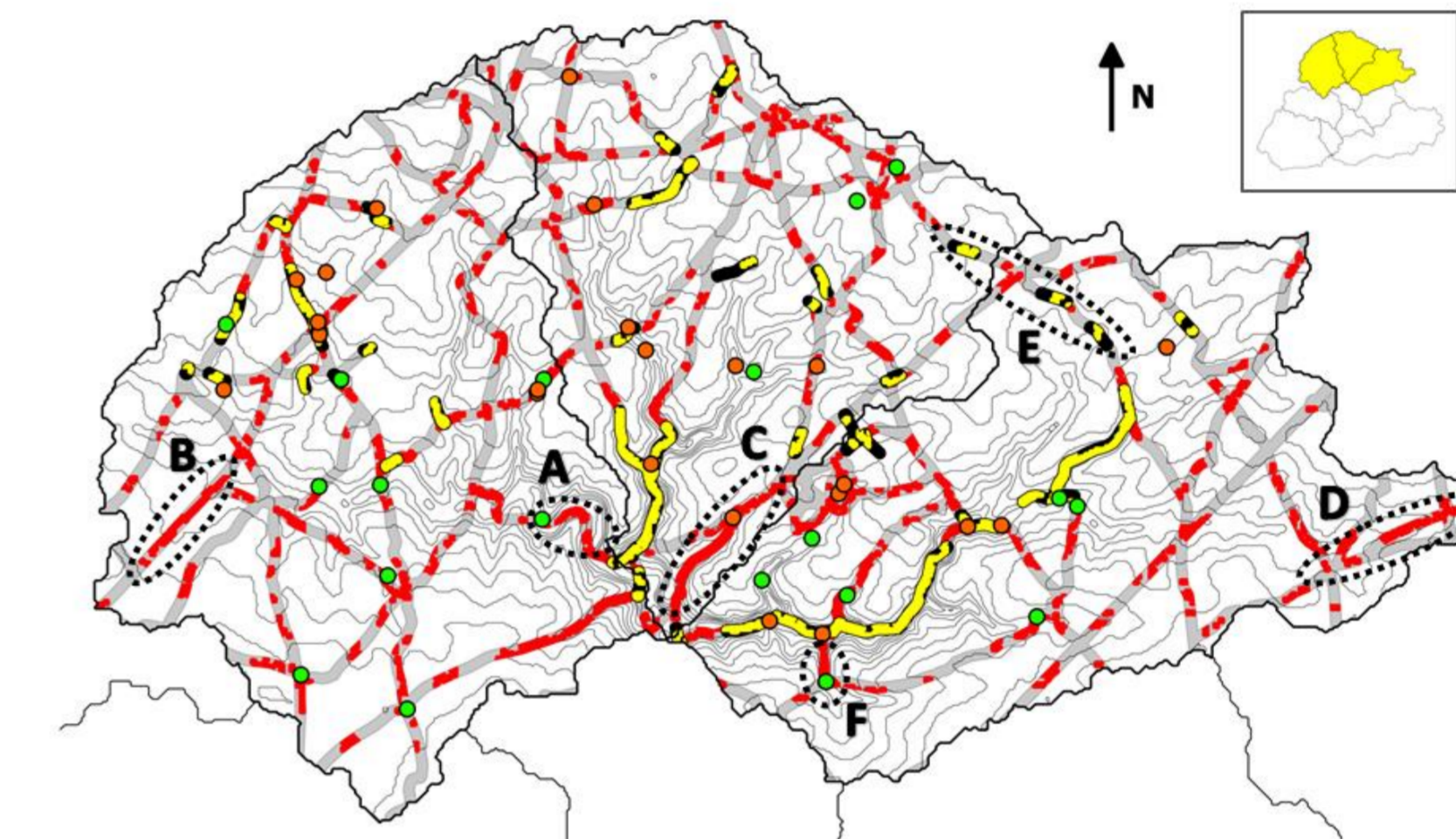
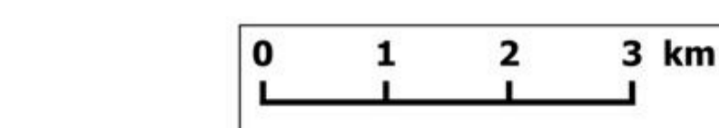
## 5 Application of IRIP



## 8 Are the IRIP maps able to detect impacted network sections?

Example of comparison for roads

Legend  
Hydraulic structures  
Has not overflowed  
Has overflowed  
Contour lines at 5 m



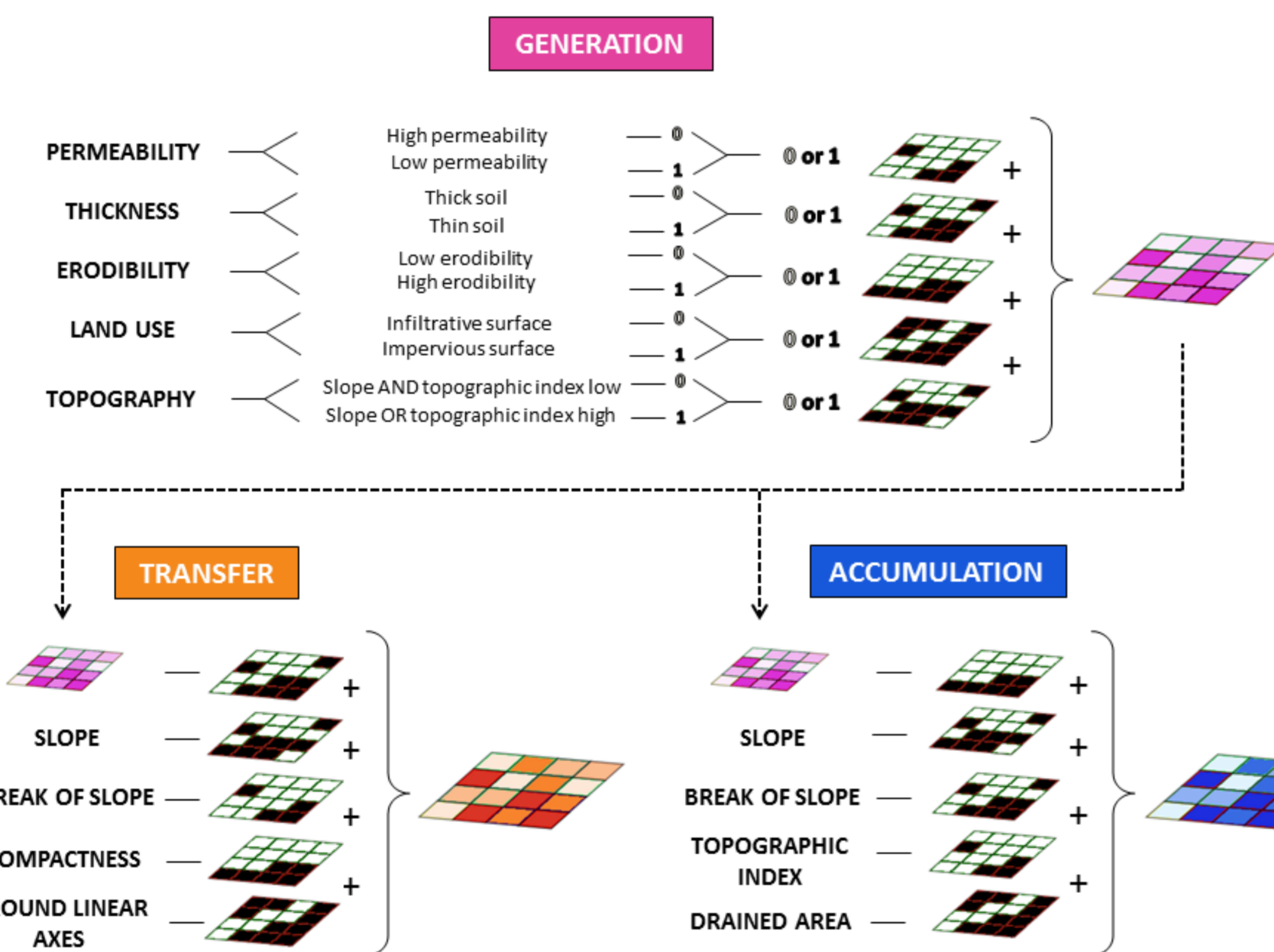
	Roads	Railways
Probability of detection	0.73	0.80
False alarm ratio	0.77	0.92

With respect to a buffer area of 25 meters both sides of the network - Not taking into account isolated pixels

- Promising probabilities of detection
- False alarm ratios should be reduced considering hydraulic protective structures and the vulnerability of road and railway infrastructures

## 3 The IRIP method

« Indicator of Intense Pluvial Runoff » (French acronym)



Provides 3 susceptibility maps of 3 surface runoff stages  
1/ generation 2/ transfer 3/ accumulation  
Susceptibility levels ranging from 0 to 5

## 6 Evaluation method

1. Use of proxy data

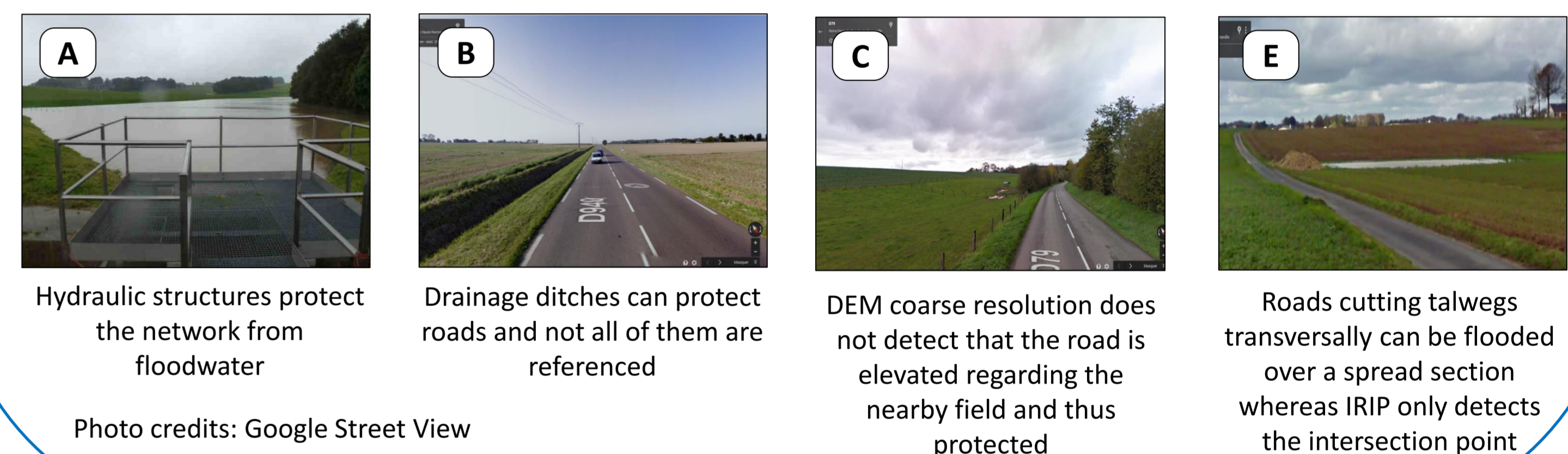
- Two risk regulatory zoning maps for geolocalized impacts of surface runoff flooding and soil erosion on roads and railway sections

2. Contingency table

		Observed event	
		Yes	No
IRIP Forecast	Yes	True positives (T+)	False positives (F+)
	No	False negatives (F-)	True negatives (T-)

3. Related correspondance indicators:

- Success ratio (SR) =  $\frac{(T+)}{(T+)+(F+)}$
  - Probability of detection (POD) =  $\frac{(T+)}{(T+)+(F-)}$
  - False alarm ratio (FAR) =  $\frac{(F+)}{(T+)+(F+)}$
- Indicators ranging from 0 to 1  
SR + FAR = 1



## 9 Origins of discrepancies

The evaluation method

- Standard verification indicators only assess a small part of the IRIP information
- Indirect relationship between susceptibility maps and surface runoff impacts: Rainfall patterns, exposure and vulnerability

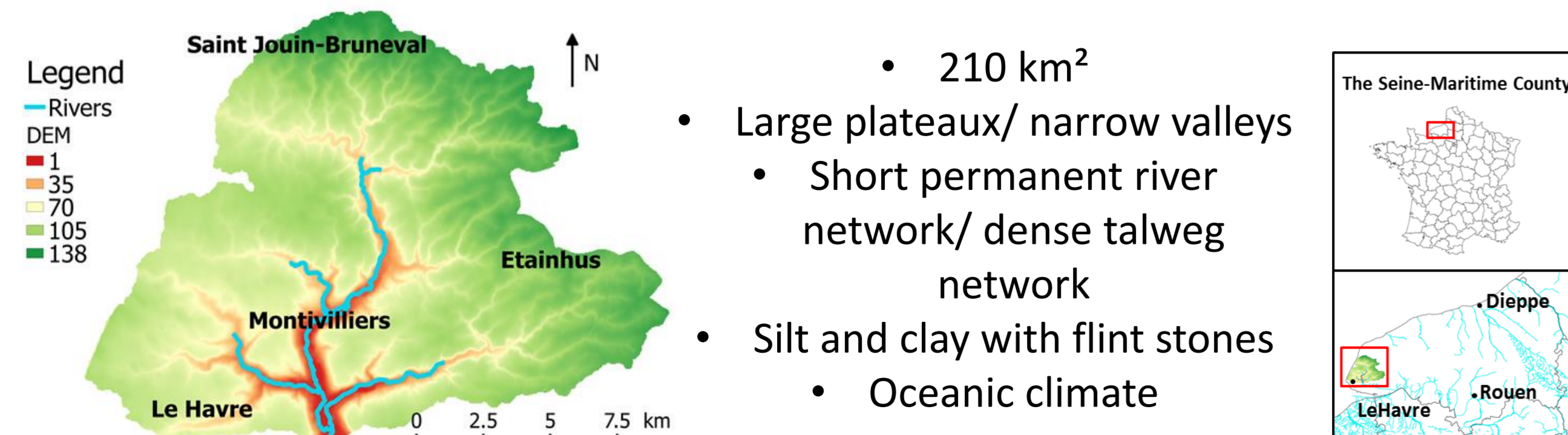
The comparison data

- Exhaustiveness
- Representativeness
  - Biases in measuring and collecting the data
- Location accuracy

The IRIP method

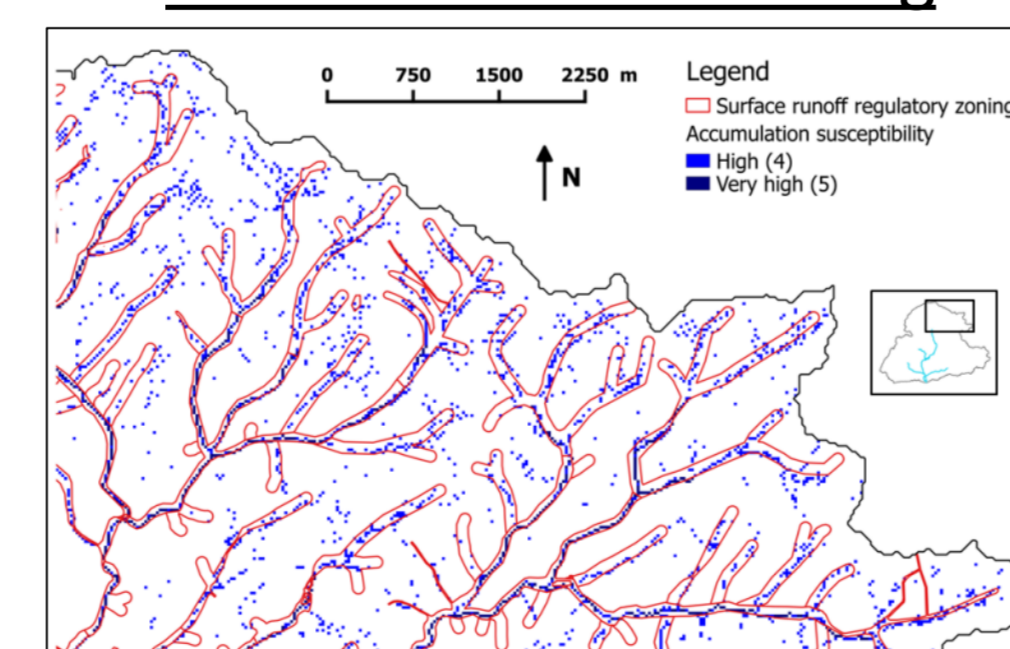
- Input data accuracy
- Indicator combination and computation method
- The IRIP "yes" forecast thresholded at  $\geq 4$
- Presence of natural sinkhole not taken into account

## 4 The study area



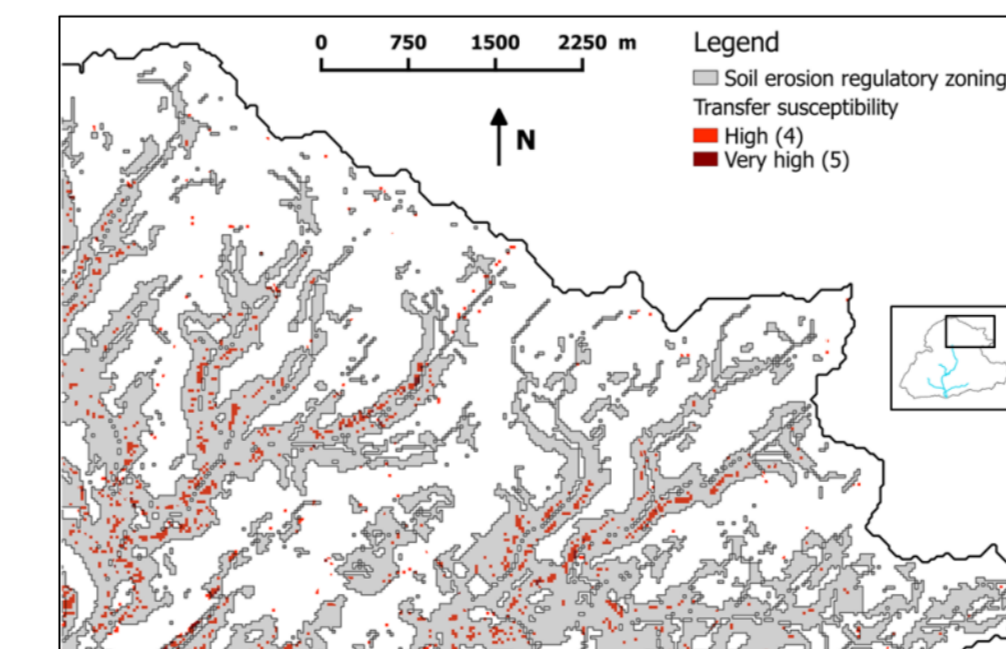
## 7 Are the IRIP maps relevant?

1. Surface runoff zoning



- Success ratio of 0.91 using a 50 meters buffer area around the regulatory zoning and considering pixels with an IRIP susceptibility level of 5
- 0.82 using a 25m buffer; 0.64 without buffer

2. Soil erosion zoning



- Success ratio of 0.92 using a 50 meters buffer area around the regulatory zoning and considering pixels with an IRIP susceptibility level of 4 and 5
- 0.89 using a 25 m buffer; 0.72 without buffer

## 10 Conclusion

- IRIP, a simple and robust method to have global view of the susceptibility of territories to intense surface runoff hazards.
- Vulnerability of the transportation network to surface runoff must be characterized to better assess sections the most susceptible to be impacted.