



HAL
open science

Assessing various approaches for flash flood forecasting in the Yzeron periurban catchment (150 km²) south-east Lyon, France

Isabelle Braud, Pascal Breil, P. Javelle, N. Pejalovic, S Guerin

► To cite this version:

Isabelle Braud, Pascal Breil, P. Javelle, N. Pejalovic, S Guerin. Assessing various approaches for flash flood forecasting in the Yzeron periurban catchment (150 km²) south-east Lyon, France. EGU General Assembly 2017, Apr 2017, Vienna, Austria. pp.1, 2017. hal-02606802

HAL Id: hal-02606802

<https://hal.inrae.fr/hal-02606802>

Submitted on 16 May 2020

HAL is a multi-disciplinary open access archive for the deposit and dissemination of scientific research documents, whether they are published or not. The documents may come from teaching and research institutions in France or abroad, or from public or private research centers.

L'archive ouverte pluridisciplinaire **HAL**, est destinée au dépôt et à la diffusion de documents scientifiques de niveau recherche, publiés ou non, émanant des établissements d'enseignement et de recherche français ou étrangers, des laboratoires publics ou privés.

1. CONTEXT AND OBJECTIVES

Context:

- A periurban catchment prone to damaging flash floods downstream, with a few hours response time
- A prevention and management plan of flooding, including the set up of a flood forecasting system

Objectives:

- Propose a simple forecasting system based on available data analysis (thresholds)
- Assess the relevance of the new French flash flood warning system based on the AIGA method in the catchment

2. STUDY AREA AND DATA (Fig. 1)

Study catchment:

- Yzeron catchment, south-east France, close to Lyon city
- Increase of urbanization from downstream since the 1970s
- Combined sewer systems with sewer overflow devices

Available data

- Rain gauges: 3 from Lyon Metropole (6 min) 6 from Irstea (variable time step)
- Radar rain gauges reanalysis from Météo-France (1996-2015), 1 km², 1 hour resolution
- SAFRAN reanalysis, 8x8 km², 1 hour resolution
- Discharge: 2 gauges from DREAL, 4 from Irstea, variable time step
- Dates of problematic events that led to over flooding

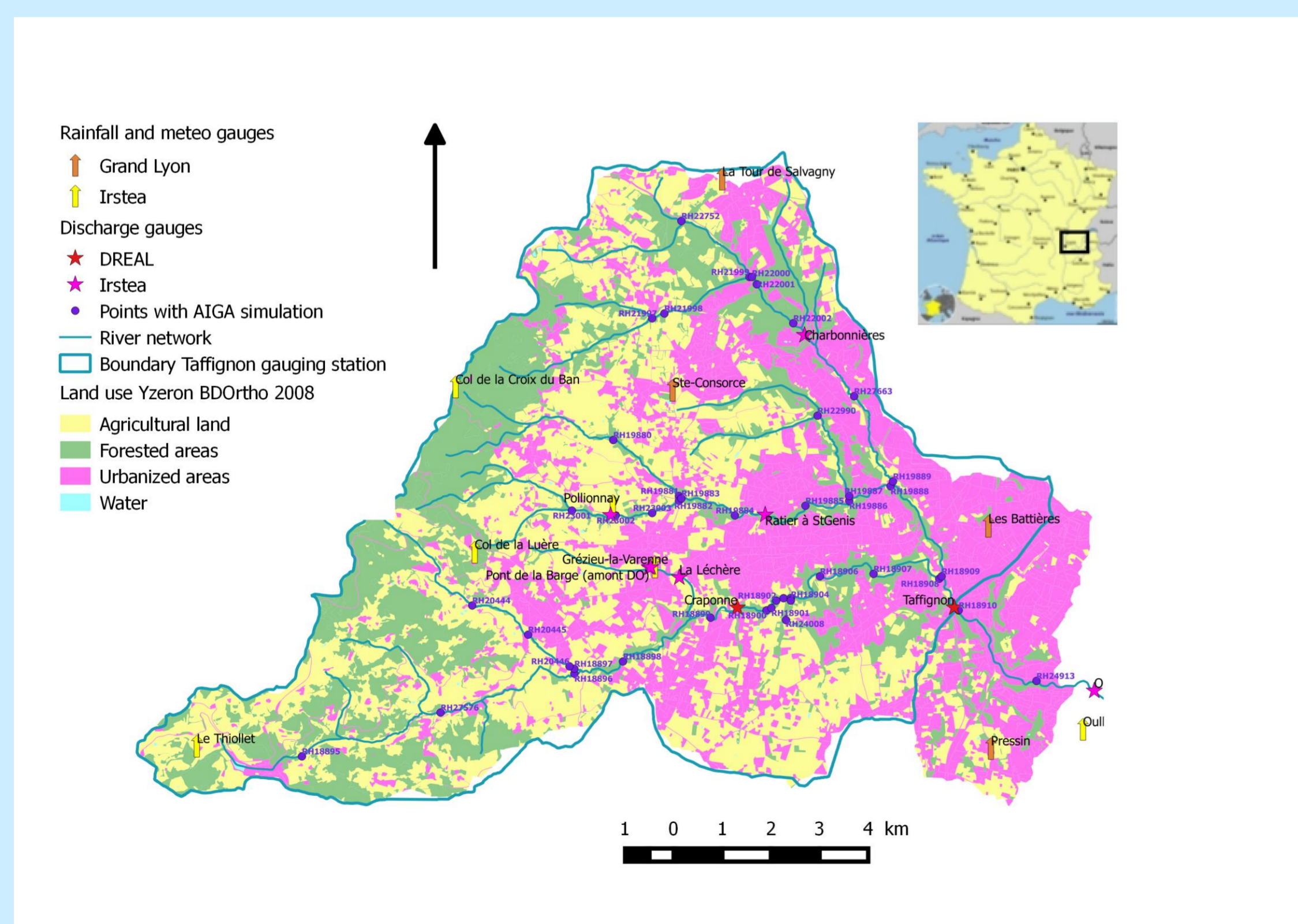


Figure 1: Location and land use of the study catchment. Location of the rain gauges and discharge stations. Location of the points where AIGA discharge was simulated

3. DATA ANALYSIS

- Extraction of rainfall events from radar data plus associated discharge (Fig. 2)
- Selection of events with rainfall amount > 20 mm + 4 additional events kept in the analysis (217 events)
- Computation of rainfall amount, maximum hourly intensity, initial discharge, rainfall amount over the 5, 10, 30 previous days and peak discharge
- Statistical analyses using 1/ Factorial Analysis of Mixed Data; 2/ Classification and Regression Tree (CART) using *FactoMineR* and *rpart* R packages

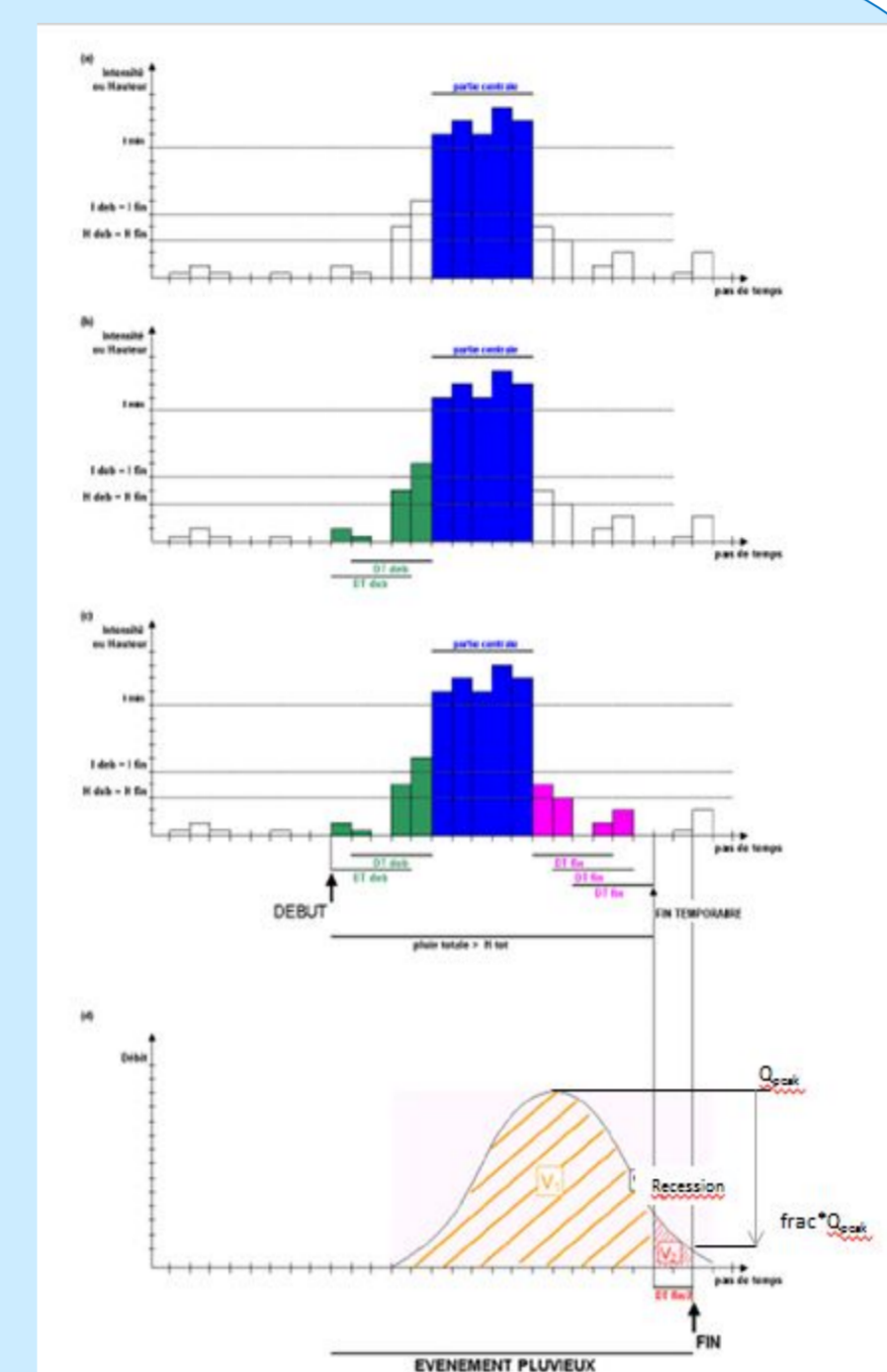


Figure 2: Event extraction method (adapted from Morena, 2004)

4. EVALUATION OF THE AIGA METHOD

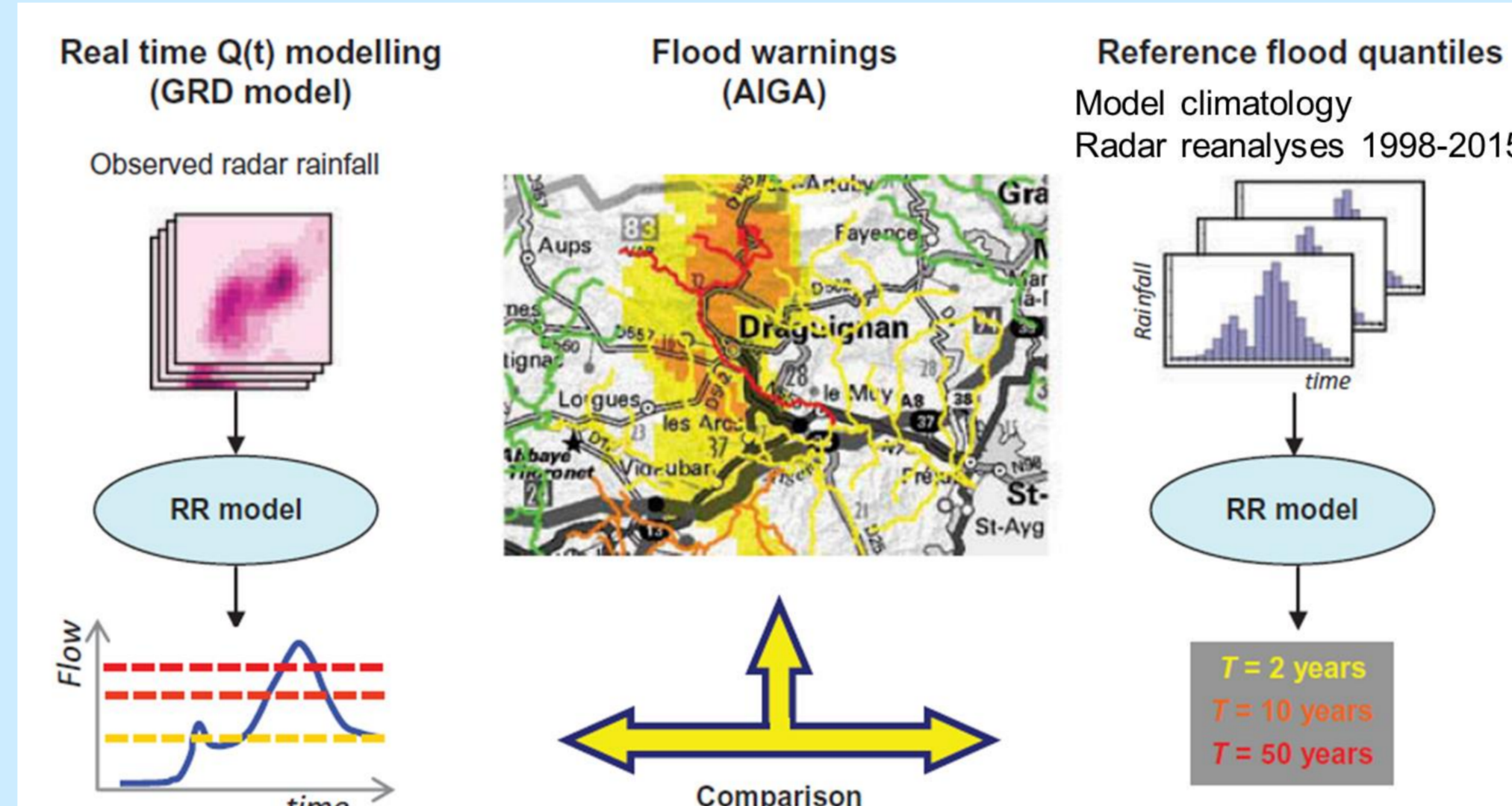


Figure 4: Principles of the AIGA method.

The AIGA method (Javelle et al., 2016) and its evaluation:

- A simple rainfall-runoff model is fed with radar / rain gauges reanalyses and the simulated discharge climatology is used to compute quantiles that are used as warning thresholds (Fig. 3 right). In real time the model is run using radar rainfall (Fig. 3 left). Warnings are issued if thresholds are exceeded (Fig. 3, middle)
- Evaluation: used of the simulated climatology in the Yzeron catchment and comparison of simulated warning levels with the known dates of overflow

6. CONCLUSIONS AND PERSPECTIVES

- Data analysis shows that monitoring rainfall amount and antecedent soil moisture is interesting for putting authorities on alert
- Performance of the AIGA method is satisfactory – but should be evaluated further when real time radar data will be used
- Lead time values must also be assessed
- On going work: evaluation of the global (GRP) and semi-distributed (TGR) flood forecasting models

5. RESULTS

Three configurations favorable to floods revealed by data analysis

- Significant differences of explaining variables between flooding and non-flooding dates (Fig. 4)
- Catchment rainfall amount, initial discharge q_{beg} , antecedent 30d-rainfall, max intensity most important splitting variables in CART analysis (Fig. 5)
- 3 clusters with flooding dates (Fig. 5): C6: high rainfall amount, wet conditions; C5: high rainfall amount, higher intensity, drier conditions; C3: Moderate rainfall amount, very wet conditions

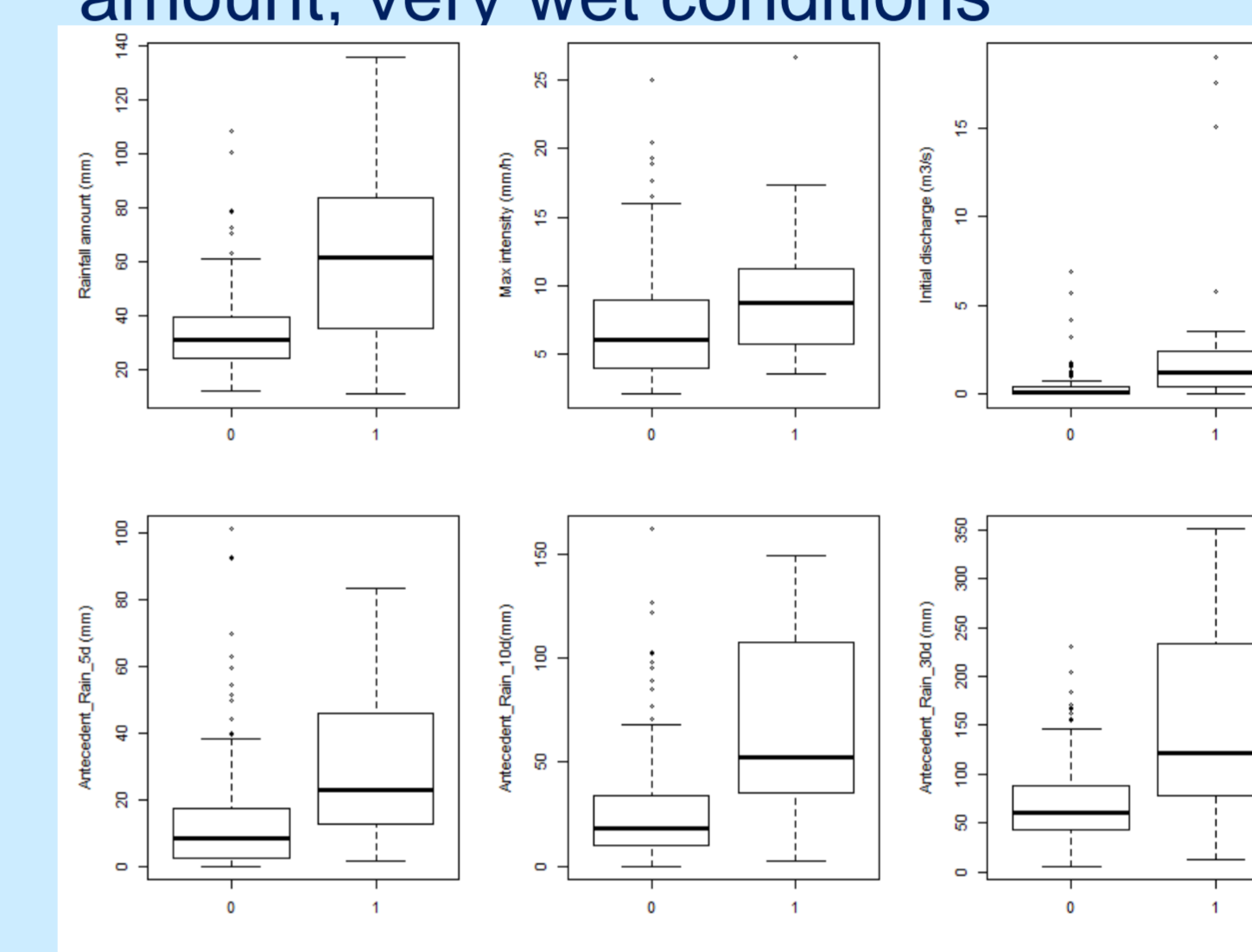


Figure 4: Boxplot of explaining variables for non-flooding (0) and flooding (1) dates. Differences are significant, $p < 0.001$

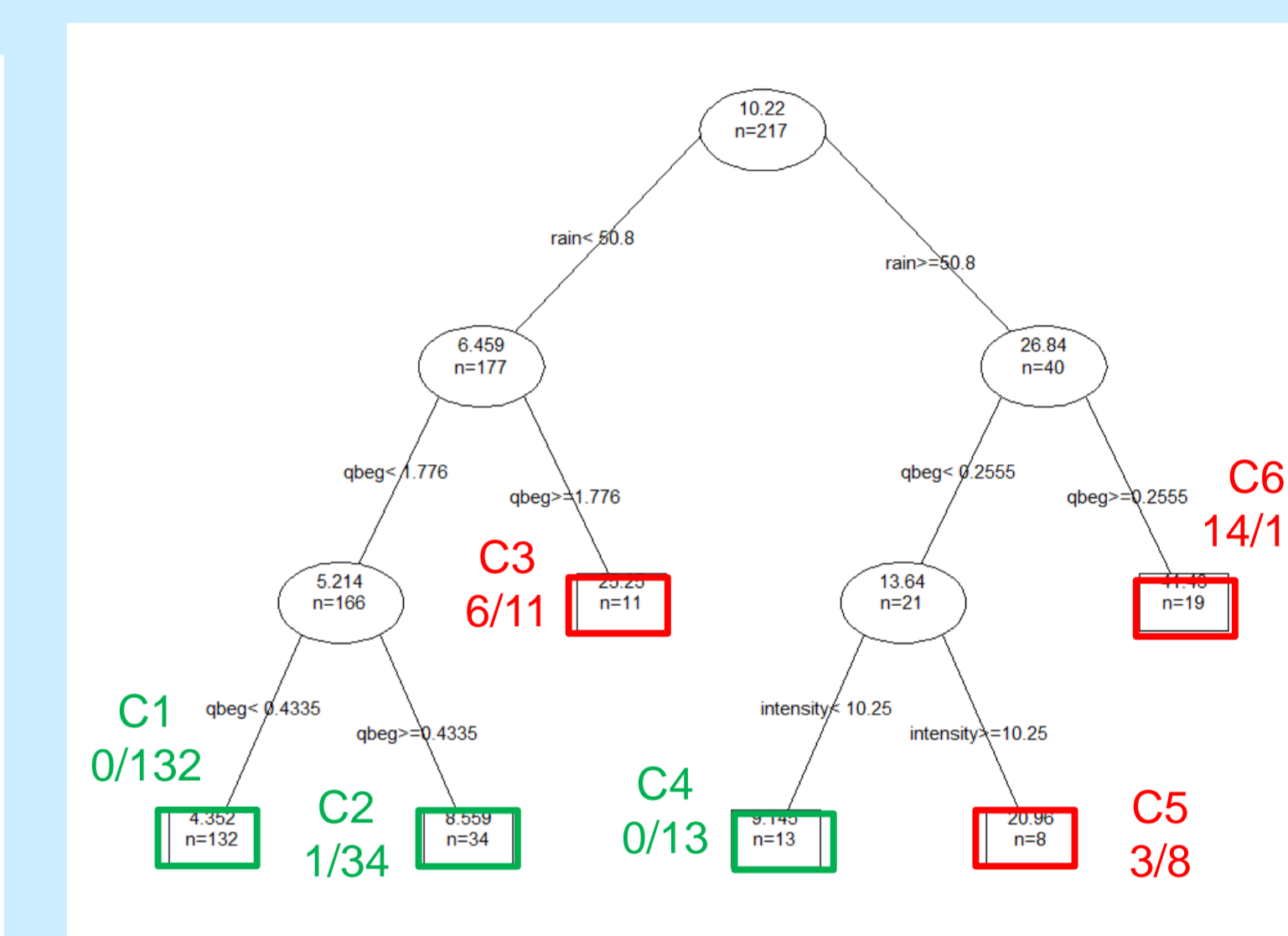


Figure 5: CART analysis results. Clusters with problematic events are in red and we give the rate of problematic events in each class

Evaluation of the AIGA method (1997-2015 period)

- The 9 flooding dates on the study period are detected with exceedance of the 5 year return threshold, except 2 dates
- Two examples of results provided in Figures 6 and 7

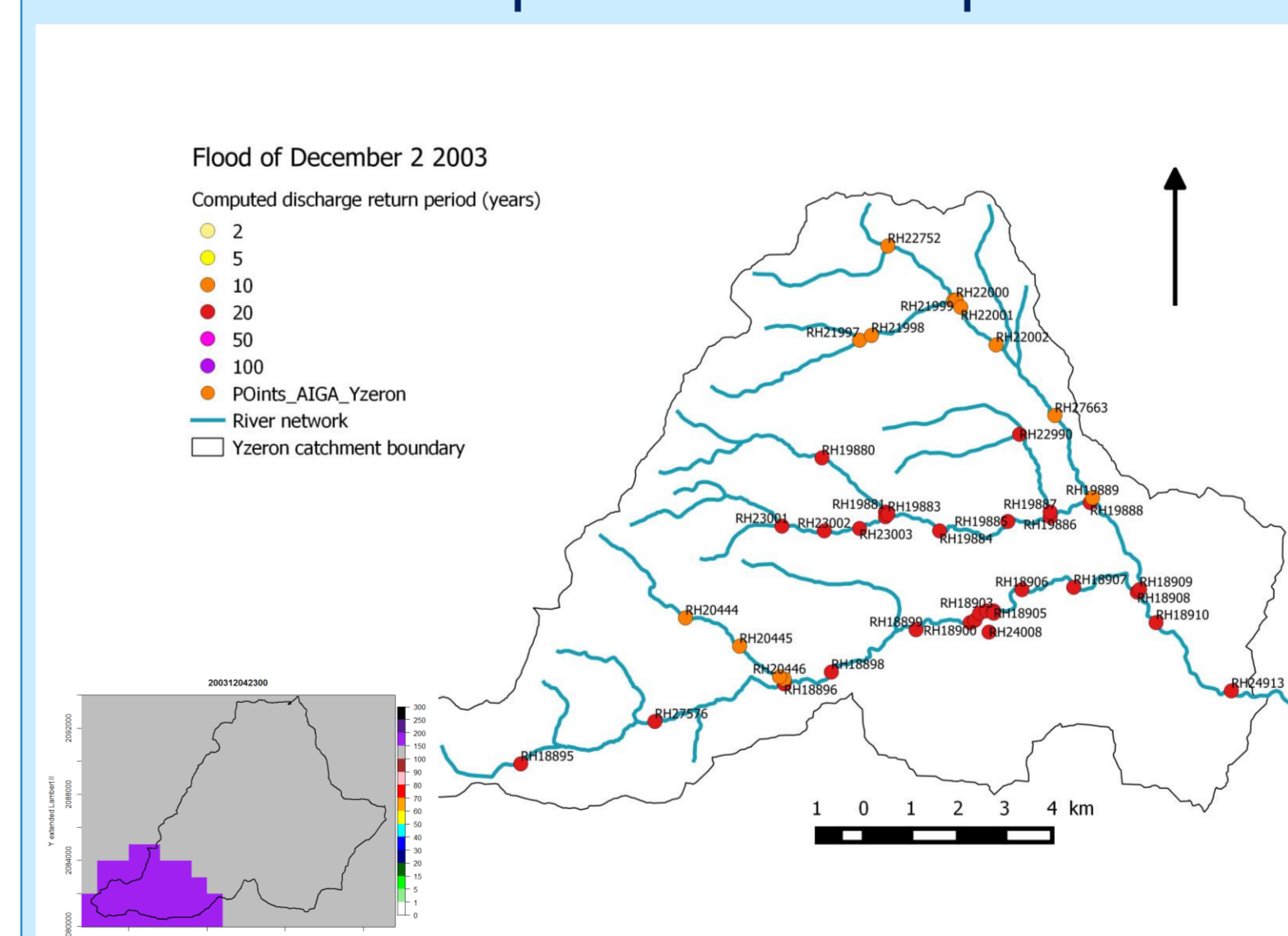


Figure 6: Event of December 2003, catchment rainfall: 136 mm, 10 and 20 year return period thresholds exceeded. Bottom left: map of accumulated rainfall

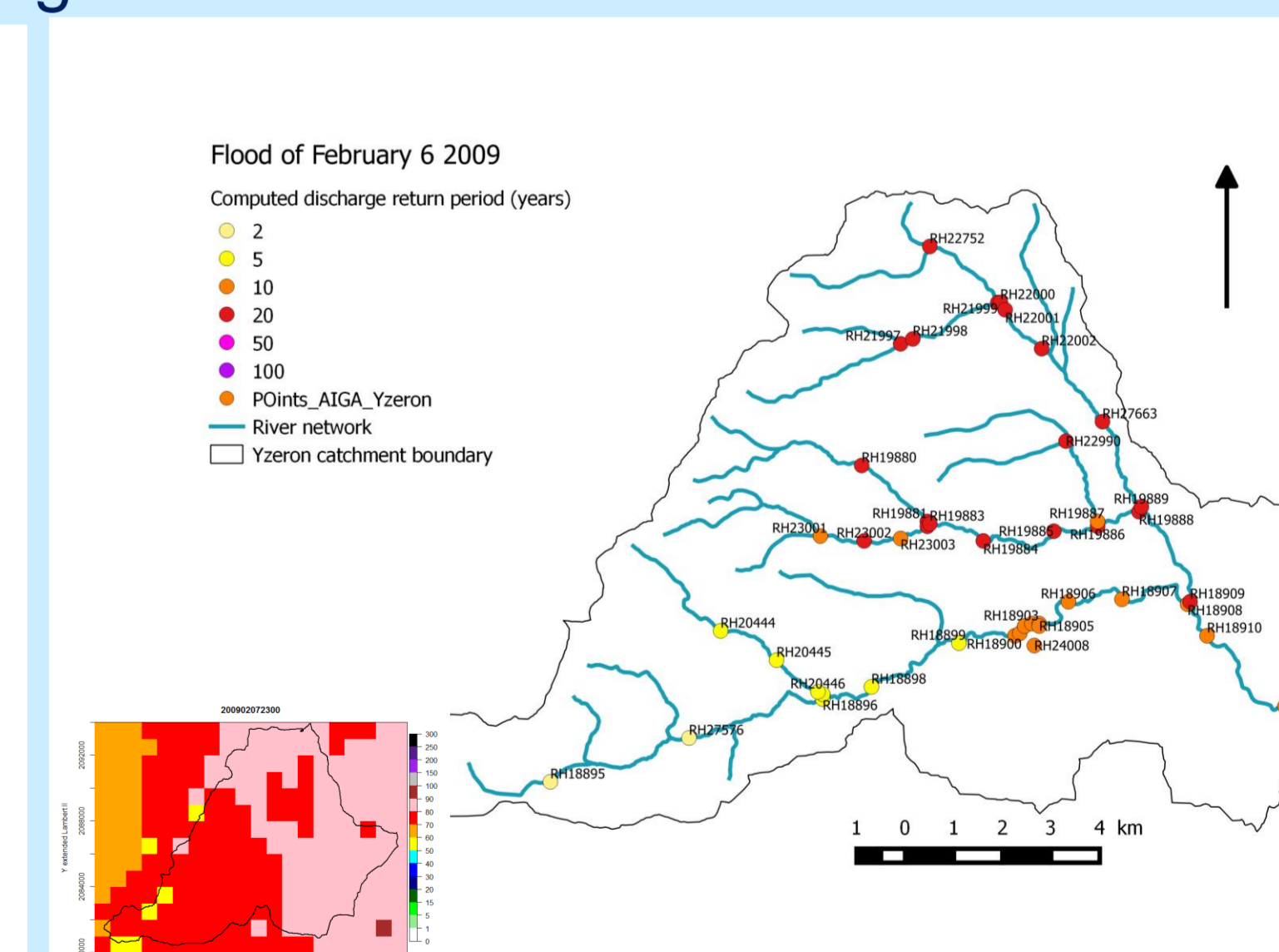


Figure 7: Event of February 2009, catchment rainfall 77 mm, 5, 10 and 20 year return period thresholds exceeded, largest threshold with higher cumulated rainfall. Bottom left: map of accumulated rainfall

References:

- Javelle, P., Organde, D., Demargne, J., Saint-Martin, C., De Saint-Aubin, C., Garandeau, L., Janet, B. - 2016. Setting up a French national flash flood warning system for ungauged catchments based on the AIGA method in FLOODrisk 2016 - 3rd European Conference on Flood Risk Management. 2016. Lyon - France, <https://doi.org/10.1051/e3sconf/20160718010>
- Morena, F., 2004. Modélisation hydrologique distribuée en milieu urbanisé. Représentation des processus de production et développement du modèle URBS, Institut National Polytechnique de Grenoble, Grenoble, 256 pp.