



HAL
open science

Latest developments of the airGR rainfall-runoff modelling R package: new calibration procedures and other features

Olivier Delaigue, Guillaume Thirel, François Bourgin, Laurent Coron

► To cite this version:

Olivier Delaigue, Guillaume Thirel, François Bourgin, Laurent Coron. Latest developments of the airGR rainfall-runoff modelling R package: new calibration procedures and other features. EGU General Assembly 2018, Apr 2018, Vienna, Austria. hal-02607857

HAL Id: hal-02607857

<https://hal.inrae.fr/hal-02607857>

Submitted on 16 May 2020

HAL is a multi-disciplinary open access archive for the deposit and dissemination of scientific research documents, whether they are published or not. The documents may come from teaching and research institutions in France or abroad, or from public or private research centers.

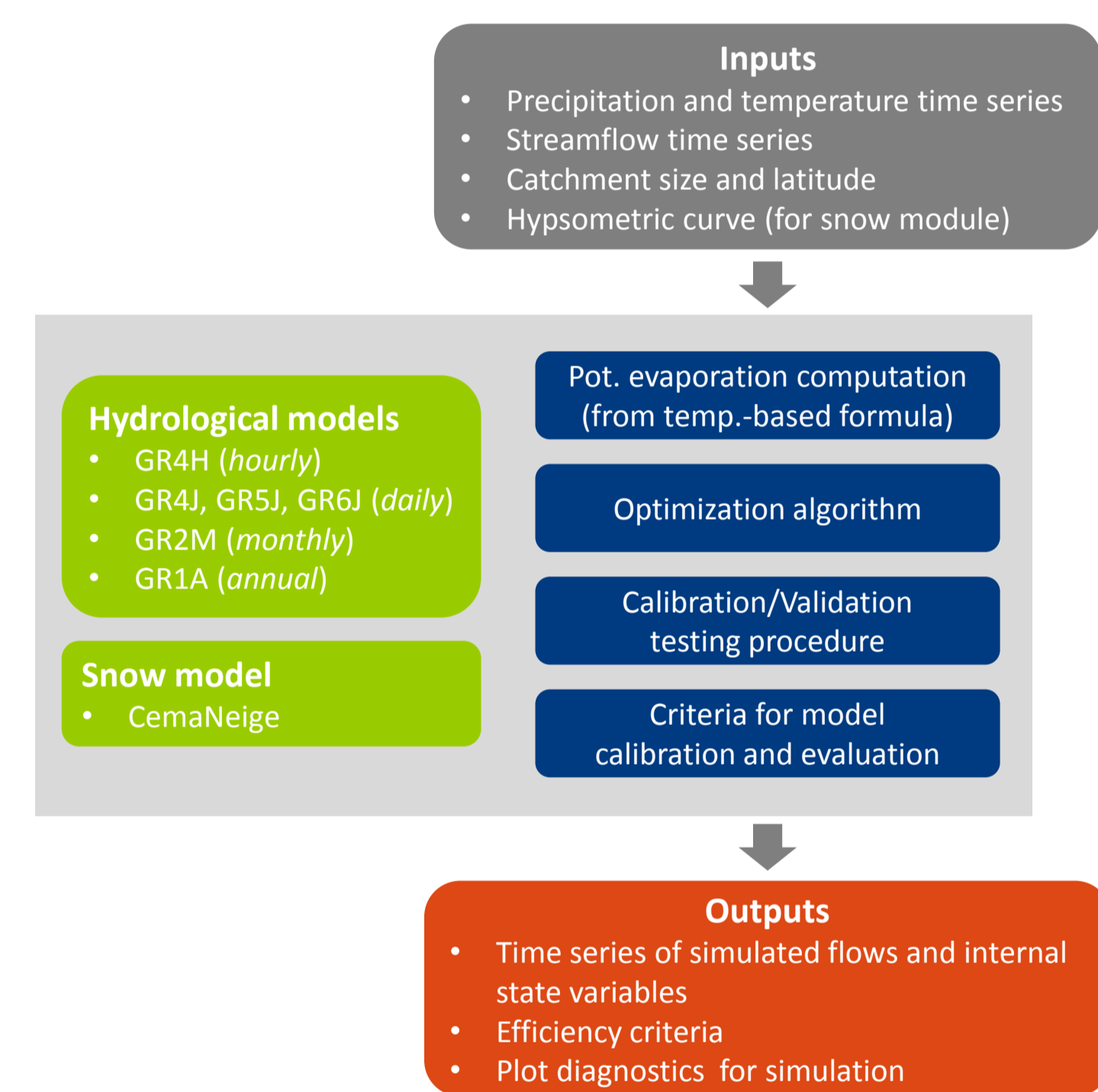
L'archive ouverte pluridisciplinaire **HAL**, est destinée au dépôt et à la diffusion de documents scientifiques de niveau recherche, publiés ou non, émanant des établissements d'enseignement et de recherche français ou étrangers, des laboratoires publics ou privés.

GR is a family of lumped hydrological models designed for flow simulation at various time steps. The models are freely available in an R package called airGR (Coron *et al.*, 2017a, 2017b). The models can easily be implemented on a set of catchments with limited data requirements.

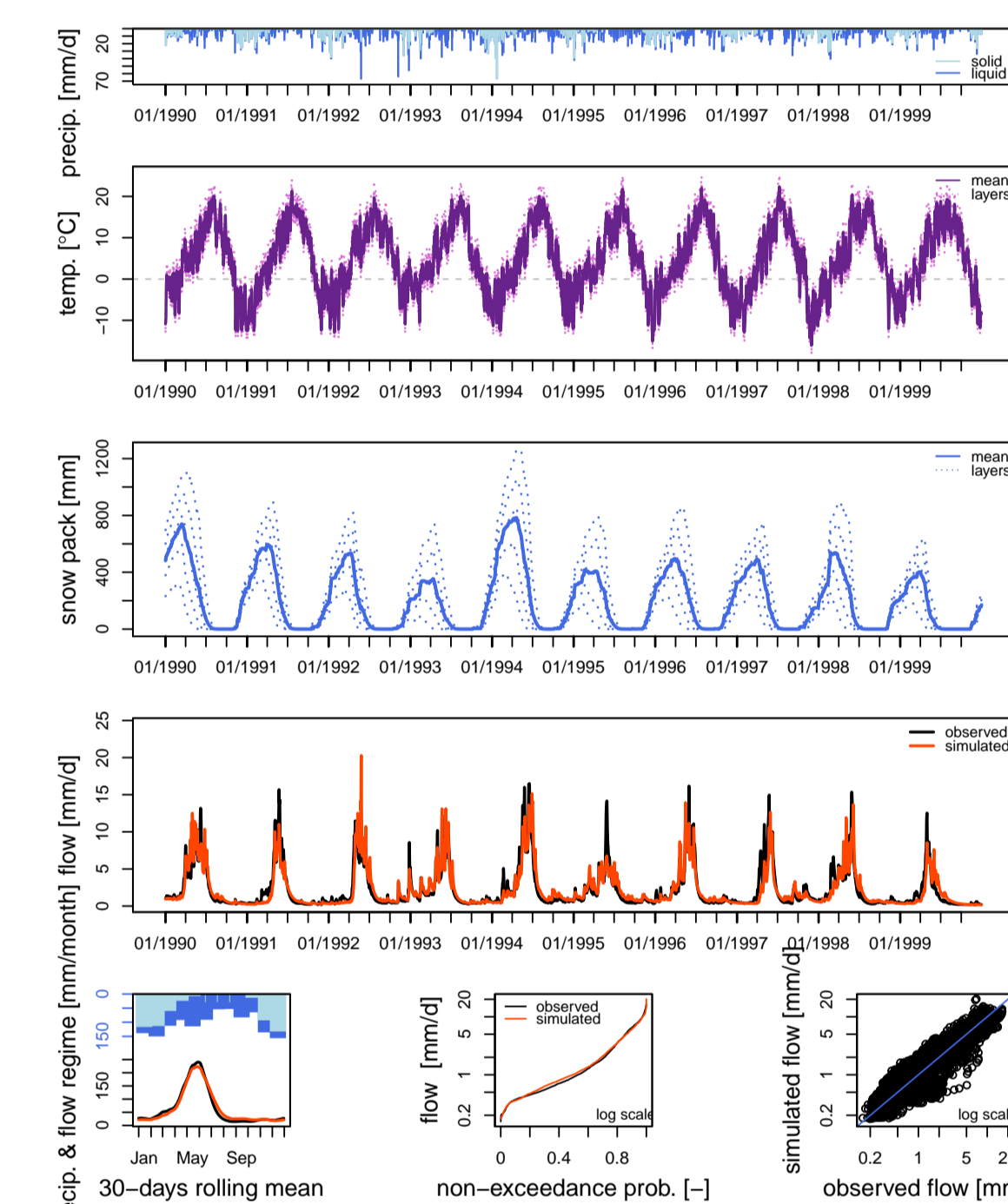
GR hydrological models

- ▶ Designed with the objective to be as efficient as possible for flow simulation at various time steps (from hourly to interannual)
- ▶ Warranted complexity structures and limited data requirements
- ▶ Can be applied on a wide range of conditions, including snowy catchments (CemaNeige snow routine included)

Main components of the airGR package



Plot diagnostics example (GR4J + CemaNeige)



News since EGU 2017 – airGR 1.0.9.64 vs airGR 1.0.5.12

- ▶ The Param_Sets_GR4J dataset was added. It contains generalist parameter sets for the GR4J model
 - ▶ If the calibration period is too short (< 6 months) and by consequence non representative of the catchment behaviour, a local calibration algorithm can give poor results and we recommend to use the generalist parameter sets instead
- ▶ Vignettes were added. They explain how to perform parameters estimation with:
 - ▶ Differential Evolution calibration algorithm
 - ▶ Particle Swarm calibration algorithm
 - ▶ MA-LS-Chains calibration algorithm
 - ▶ Bayesian MCMC framework
- ▶ A new airGRteaching package (Delaigue *et al.*, 2018) provides tools to simplify the use of the airGR hydrological package for education, including a 'Shiny' interface

Future developments

- ▶ New version of CemaNeige that allows to use satellite snow cover area for calibration (Riboust *et al.*, accepted)
- ▶ Parameters maps on France for GR4J, GR5J & GR6J models for ungauged basins (Poncelet *et al.*, submitted)

How to use other R packages to perform parameters estimation

- ▶ Definition of the necessary function:
 - ▶ transformation of parameters to real space (available in airGR)
 - ▶ computation of the value of the performance criterion (e.g. RMSE)

```
OptimGR4J <- function(Param_Optim) {
  Param_Optim_Vre <- airGR::TransfoParam_GR4J(ParamIn = Param_Optim,
                                              Direction = "TR")
  OutputsModel <- airGR::RunModel_GR4J(InputsModel = InputsModel,
                                       RunOptions = RunOptions,
                                       Param = Param_Optim_Vre)
  OutputsCrit <- airGR::ErrorCrit_RMSE(InputsCrit = InputsCrit,
                                       OutputsModel = OutputsModel)
  return(OutputsCrit$CritValue)
}
```
- ▶ Definition of the lower and upper bounds of the four GR4J parameters in the transformed parameter space


```
lowerGR4J <- rep(-9.99, times = 4)
upperGR4J <- rep(+9.99, times = 4)
```
- ▶ Local optimisation
 - ▶ Single-start (here) or multi-start approach to test the consistency of the local optimisation

```
startGR4J <- c(4.1, 3.9, -0.9, -8.7)
optPORT <- stats::nlminb(start = startGR4J, objective = OptimGR4J,
                        lower = lowerGR4J, upper = upperGR4J,
                        control = list(trace = 1))
```
- ▶ Global optimisation
 - ▶ Most often used when facing a complex response surface, with multiple local minima
 - ▶ Differential Evolution


```
optDE <- DEoptim::DEoptim(fn = OptimGR4J,
                          lower = lowerGR4J, upper = upperGR4J,
                          control = DEoptim::DEoptim.control(NP = 40, trace = 10))
```
 - ▶ Particle Swarm


```
optPSO <- hydroPSO::hydroPSO(fn = OptimGR4J,
                              lower = lowerGR4J, upper = upperGR4J,
```
 - ▶ MA-LS-Chains

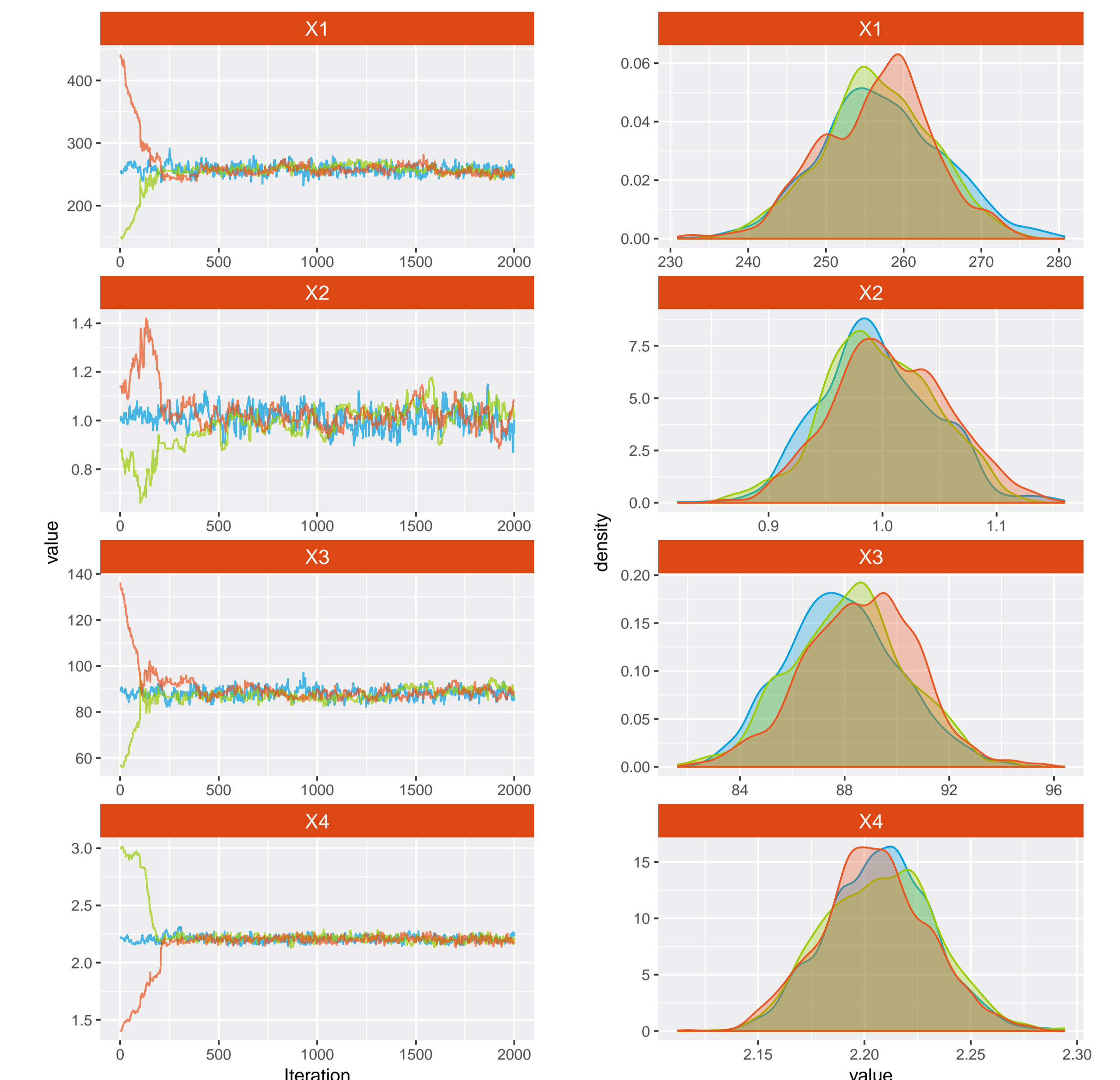

```
optMALS <- Rmalschains::malschains(fn = OptimGR4J, maxEvals = 2000,
                                    lower = lowerGR4J, upper = upperGR4J)
```
- ▶ Results

Algo	X1	X2	X3	X4	RMSE	CPU
airGR	257.238	1.012	88.235	2.208	0.7852	00.53 s
PORT	256.808	1.004	88.167	2.205	0.7852	01.79 s
DE	256.808	1.004	88.167	2.205	0.7852	75.10 s
PSO	256.836	1.006	88.207	2.204	0.7852	29.55 s
MA-LS	256.808	1.004	88.167	2.205	0.7852	18.42 s

Download the airGR package

The airGR package is available on the Comprehensive R Archive Network: <https://CRAN.R-project.org/package=airGR/>

Evolution of 3 Markov chains & posterior density for each parameter



References

- ▶ Coron, L., Thirel, G., Delaigue, O., Perrin, C. & Andréassian, V. (2017). The suite of lumped GR hydrological models in an R package. *Environmental Modelling & Software* 94, 166–171. DOI: 10.1016/j.envsoft.2017.05.002.
- ▶ Coron L., Perrin C., Delaigue, O., Thirel, G. & Michel C. (2017). airGR: Suite of GR Hydrological Models for Precipitation-Runoff Modelling. R package version 1.0.9.64. URL: <https://webgr.irstea.fr/en/airGR/>.
- ▶ Delaigue, O., Coron, L. & Brigode, P. (2018). airGRteaching: Teaching Hydrological Modelling with the GR Rainfall-Runoff Models ('Shiny' Interface Included). R package version 0.2.2.2. URL: <https://webgr.irstea.fr/en/airGR/>.
- ▶ Poncelet, C., Andréassian, V., & Oudin, L. (submitter). Regionalization of Hydrological Models by Group Calibration. *Water Resources Research*.
- ▶ Riboust, P., Thirel, G., Le Moine, N. & Ribstein, P. (accepted). Revisiting a simple degree-day model for integrating satellite data: implementation of SWE-SCA hystereses. *Journal of Hydrology and Hydrodynamics*, DOI: 10.2478/johh-2018-0004.