



HAL
open science

Towards the demise of French alpine glaciers: Parameterized modelling and perspectives on glacier evolution for the 1984-2100 period

J. Bolibar, Andréane Rabatel, I. Gouttevin, T. Condom, Eric Sauquet

► To cite this version:

J. Bolibar, Andréane Rabatel, I. Gouttevin, T. Condom, Eric Sauquet. Towards the demise of French alpine glaciers: Parameterized modelling and perspectives on glacier evolution for the 1984-2100 period. AGU Fall Meeting 2018, Dec 2018, Washington, United States. pp.1, 2018. hal-02608337

HAL Id: hal-02608337

<https://hal.inrae.fr/hal-02608337>

Submitted on 16 May 2020

HAL is a multi-disciplinary open access archive for the deposit and dissemination of scientific research documents, whether they are published or not. The documents may come from teaching and research institutions in France or abroad, or from public or private research centers.

L'archive ouverte pluridisciplinaire **HAL**, est destinée au dépôt et à la diffusion de documents scientifiques de niveau recherche, publiés ou non, émanant des établissements d'enseignement et de recherche français ou étrangers, des laboratoires publics ou privés.

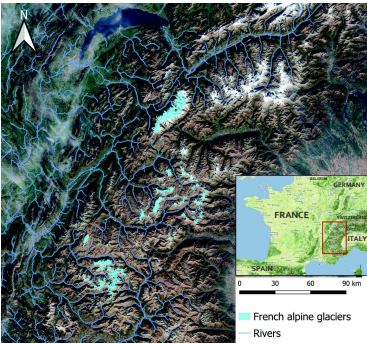


Towards the demise of French alpine glaciers: Parameterized modelling and perspectives on glacier evolution for the 1984-2100 period

Jordi Bolibar^{1,2}, Antoine Rabatel¹, Isabelle Gouttevin³, Thomas Condom¹, Eric Sauquet²



¹Univ. Grenoble Alpes, CNRS, IRD, Grenoble INP, Institut des Géosciences de l'Environnement (UMR 5002), Grenoble, France
²Irstea, UR RiverLy, centre de Lyon-Villeurbanne, France
³Univ. Grenoble Alpes, Université de Toulouse, Météo-France, CNRS, CNRM, Centre d'Etudes de la Neige, Grenoble, France



Study region: the French Alps

Introduction

The Rhône river basin is a highly populated area in **southeastern France**, with a high concentration of alpine glaciers which have been rapidly retreating in the last decades as the climate warms. In order to anticipate **potential issues and conflicts concerning water resources** in the high alpine valleys, there is a **strong need for local-to-regional projections** of glacier and snow hydrological contributions.

In this study, we present **ALPGM (ALPine Parameterized Glacier Model)**, a **fully parameterized glacier model**, which makes use of the most recent available data and reanalysis to simulate the evolution of all the ~660 glaciers in the French Alps for the **1984-2100 period**. It computes glacier-wide yearly surface mass balances (SMB) using **machine learning**, and it updates the glacier geometry by redistributing the glacier-wide SMB values along the glacier elevations according to a **glacier-specific parameterized function**.

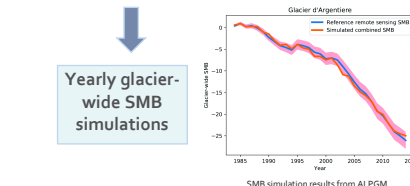
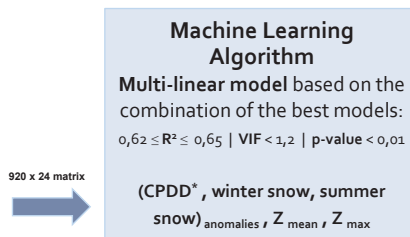
Model and Data - ALPGM

SMB simulation

In contrast to most glacier models, here we have considered a **fully parameterized approach using machine learning**:

Training dataset (24 parameters)

- Meteorological data (SAFRAN + ADAMONT reanalyses) (Durant et al., 1993) (Verfaillie et al., 2017)
- Topographical data (GLIMS glacier database) (GLIMS, 2003, updated 2008)
- All possible combinations



Validation dataset (920 values)

- SMB
- Yearly glacier-wide SMB
- Values estimated from the snow line using remote sensing (Rabatel et al., 2016)

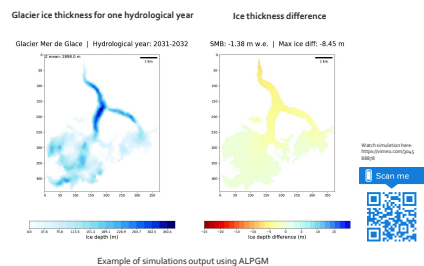
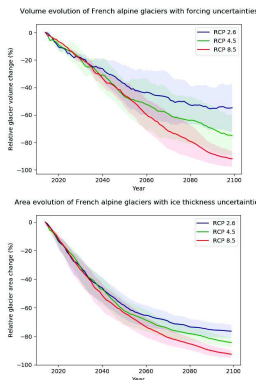
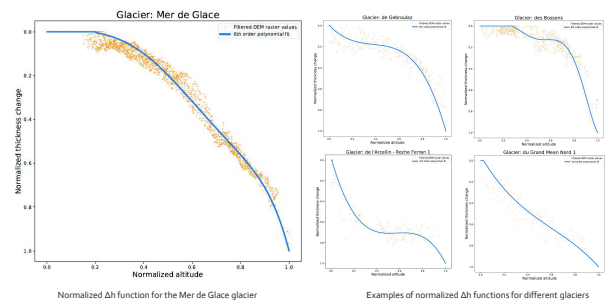
Yearly glacier-wide SMB simulations

* future changes in ablation season length are taken into account computing a dynamic yearly CPDD value.

Glacier geometry change

The glacier ice volume (Huss and Farinotti, 2012), area and surface elevation are updated with an annual time step, using the mass-conserving Δh function parameterization (Huss et al., 2010).

For every glacier $\geq 0.5 \text{ km}^2$ we compute a **glacier-specific normalized Δh function** which redistributes the yearly glacier-wide mass change along all the glacier altitudes. For very small glaciers ($< 0.5 \text{ km}^2$) we use a simplified flat function. As opposed to previous studies (Vincent et al., 2014; Huss and Fischer, 2016), it is computed by directly **processing the DEM raster files (1979 – photogrammetric, 2011 – SPOT5)** instead of using elevation bands.



Example of simulations output using ALPGM
 Glacier surface area and volume projections for the 21st century (2 GCM/RCM combinations for 3 different RCPs)
 • CSC-REMO2009-MPI-M-MPI-ESM-LR
 • SMH-RCA4-CHEC-EC-EARTH

Discussion and Results

Extensive simulations considering different RCPs and GCM/RCM combinations from the EURO-CORDEX-based **ADAMONT** dataset still need to be run, but the first simulations show a **severe retreat of alpine glaciers** in the French Alps, with **more than 90% of the current ice volume lost in the worst scenario (RCP 8.5)** and **around 55% for the most conservative one (RCP 2.6)**. The **negative trend seems to only stabilize for the RCP 2.6** in the last decades of the century.

ALPGM, being fully parameterized and with roots on **Data Science**, is an easily **extendable model**, whose performance grows as new data become available. The validation and training datasets will soon be enlarged, and new algorithms and types of variables will be tested. To our knowledge, this effort represents the **first foray into machine learning applied to glacier modelling**.

Conclusions and Perspectives

- Fully parameterized models using machine learning represent an interesting and logical step in glaciology in an era of ever-expanding data. Here we present the first effort known to date towards Data Science-based glacier models.
- More advanced algorithms, such as LASSO, Ridge or Random Forest will be explored, besides complex multiple linear regressions, in order to improve and adapt the model. The validation and training datasets will also be expanded

- Alpine glaciers in the French Alps are likely to disappear by the end of the 21st century, where only the largest glaciers in the Mont Blanc massif might remain
- ALPGM's results will be compared to the generic Δh parameterization approach (Huss et al., 2010), as well as previous regional and global studies (Huss, 2011; Huss and Hock, 2015; Huss and Hock, 2018) which included the western Alps
- The ALPGM glacier model will be coupled to the J2k-Rhone (Fink et al., 2007; Krause, 2002) semi-distributed hydrological model in order to study the impact of glacier retreat in the Rhône river catchment

References:
 Durand, Y., Brun, E., Merindol, L., Guyomarc'h, G., Lesaffre, B., Martin, E., 1993. A meteorological estimation of relevant parameters for snow models. Ann. Glaciol. 18, 65-71.
 Fink, M., Krause, P., Kralisch, S., Bende-Michl, U., Flügel, W.-A., 2007. Development and application of the modelling system J2000-S for the EU-water framework directive. Adv. Geosci. 11, 323-330.
 Huss, M., Jouveit, G., Farinotti, D., and Baerli, A., Future high-mountain hydrology: a new parameterization of glacier retreat. Hydrol. Earth Syst. Sci., 14, 815-829.
 Huss, M., and Farinotti, D. (2013). Distributed ice thickness and volume of all glaciers around the globe. J. Geophys. Res., 117, F04020.
 Huss, M., and Hock, R. (2015). A new model for global glacier change and sea-level rise. Frontiers in Earth Science, 3, 54.
 Huss, M., and Hock, R. (2018). Global-scale hydrological response to future glacier mass loss. Nature Climate Change, 8(2), 135.
 Krause, P., 2002. Quantifying the impact of land use changes on the water balance of large catchments using the J2000 model. Phys. Chem. Earth Parts A/B/C, 27, 663-673.
 Rabatel, A., Dedieu, J.P., Vincent, C., 2015. Spatio-temporal changes in glacier-wide mass balance quantified by optical remote sensing on 30 glaciers in the French Alps for the period 1983-2014. J. Glaciol. 61, 1153-1166.
 Verfaillie, D., Déqué, M., Morin, S., Lafaysse, M., 2017. The method ADAMONT v2.0 for statistical adjustment of climate projections applicable to energy balance land surface models. Geosci. Model Dev. 10, 4257-4283.
 Vincent, C., Harter, M., Gilbert, A., Berthier, E., Sica, D., 2014. Future fluctuations of Mer de Glace, French Alps, assessed using a parameterized model calibrated with past thickness changes. Ann. Glaciol. 55, 15-24.



Acknowledgements: The authors would like to thank Benjamin Renard (Irstea Lyon) for his expertise in statistical modelling and Deborah Verfaillie (Barcelona Supercomputing Center) for the ADAMONT climatic forcings. This study has been possible through funding and data from multiple scientific programmes and institutions: the ANR VIP_Mont Blanc (ANR-14-CE03-0005-03), the BERGER project (Pack Ambition Recherche funded by the AuRA region), the GLACIOCLIM National Observation Service, the LabEx OSUG@2020 (Investissements d'avenir - ANR10-LABX6), the CNES via the KALIDEOS-Alpes and IS15 projects, EDF for the SPAZM dataset and Météo-France for the SAFRAN and ADAMONT datasets.

jordi.bolibar@univ-grenoble-alpes.fr