



HAL
open science

Multiscale socio-ecological networks in the age of information

Maxime Lenormand, Sandra Luque

► **To cite this version:**

Maxime Lenormand, Sandra Luque. Multiscale socio-ecological networks in the age of information. IUFRO Posadas 2018: Adaptive management for forested landscapes in transformation, Oct 2018, Posadas, Argentina. hal-02608951

HAL Id: hal-02608951

<https://hal.inrae.fr/hal-02608951v1>

Submitted on 6 Jul 2020

HAL is a multi-disciplinary open access archive for the deposit and dissemination of scientific research documents, whether they are published or not. The documents may come from teaching and research institutions in France or abroad, or from public or private research centers.

L'archive ouverte pluridisciplinaire **HAL**, est destinée au dépôt et à la diffusion de documents scientifiques de niveau recherche, publiés ou non, émanant des établissements d'enseignement et de recherche français ou étrangers, des laboratoires publics ou privés.

Multiscale socio-ecological networks in the age of information

Maxime Lenormand & Sandra Luque
UMR TETIS, Irstea, France

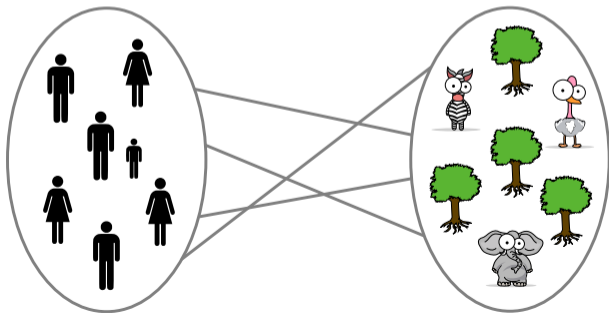
IUFRO 2018 | Posadas, Argentina

Thursday, October 4th 2018

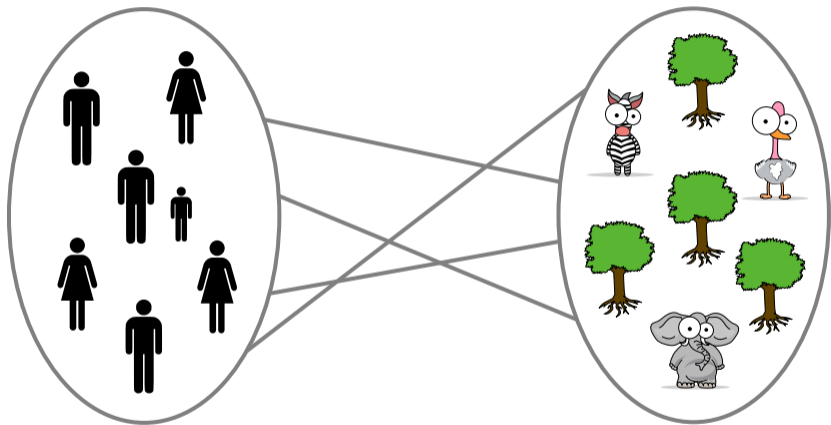


Motivation

How can we use **ICT data** to model and visualize **complex socio-ecological interactions** to better understand how **people** interact with **natural spaces**?

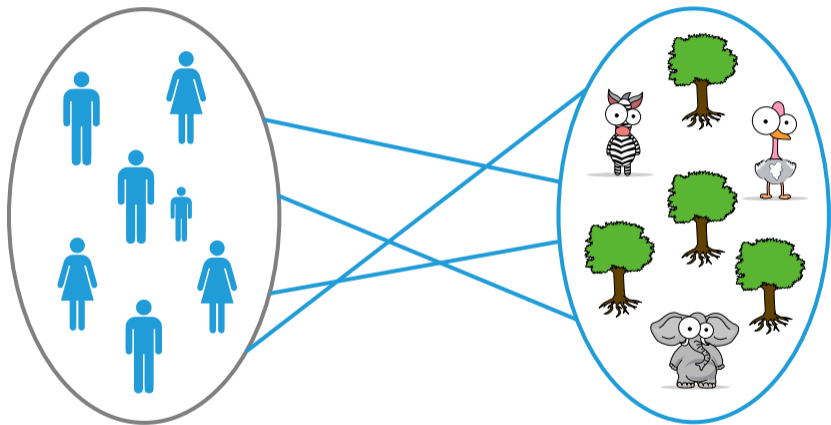


Spatio-temporal network



Non-material interactions
(1 hour in $500 \times 500 \text{ m}^2$)

Spatio-temporal network

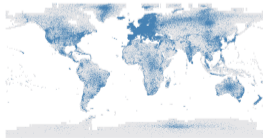


Non-material interactions
(1 hour in $500 \times 500 \text{ m}^2$)

Methodological framework



16 case study sites



+ online survey



User
Time
Lon/Lat
Photo



flickr



**Classify and validate every Flickr
photos following the Common
International Classification of
Ecosystem Services**



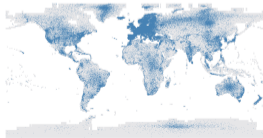
16 case study sites



Methodological framework



16 case study sites



+ online survey



flickr

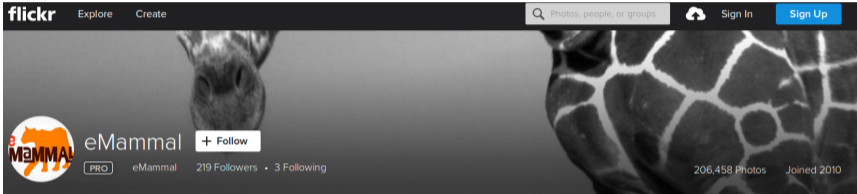



Classify and validate every Flickr photos following the Common International Classification of Ecosystem Services



Flickr data

flickr Explore Create Sign In [Sign Up](#)



 eMammal [+ Follow](#)

PRO eMammal 219 Followers • 3 Following 206,458 Photos Joined 2010

[Photostream](#)

[Albums](#)

[Favorites](#)

[Groups](#)

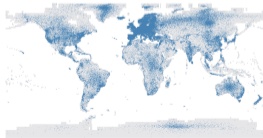
[More](#) ▾



Methodological framework



16 case study sites



+ online survey



User
Time
Lon/Lat
Photo



flickr

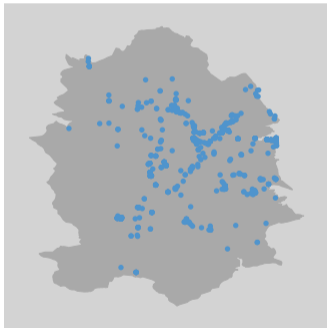


**Classify and validate every Flickr
photos following the Common
International Classification of
Ecosystem Services**



Photos classification process

From more than **100,000** to **17,500** photos



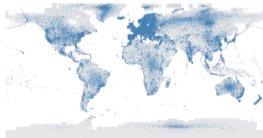
Every Flickr photos has been classified and validated following the Common International Classification of Ecosystem Services



Methodological framework



16 case study sites



+ online survey



User
Time
Lon/Lat
Photo



flickr

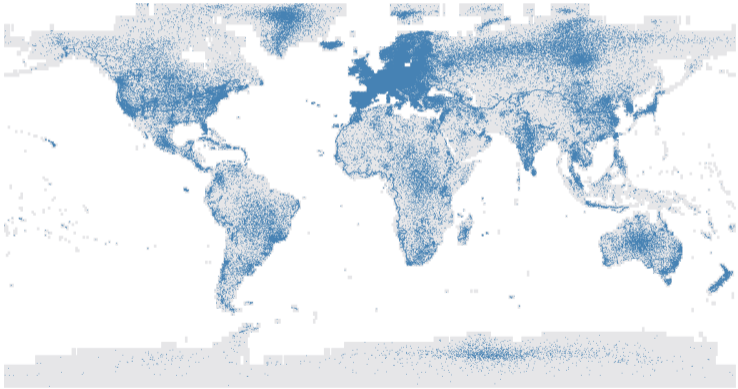


**Classify and validate every Flickr
photos following the Common
International Classification of
Ecosystem Services**



Flickr users

Identification of users' place of residence

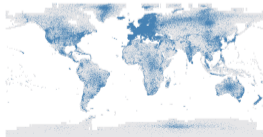


13,000 photos taken by **2,300** users

Methodological framework



16 case study sites



+ online survey



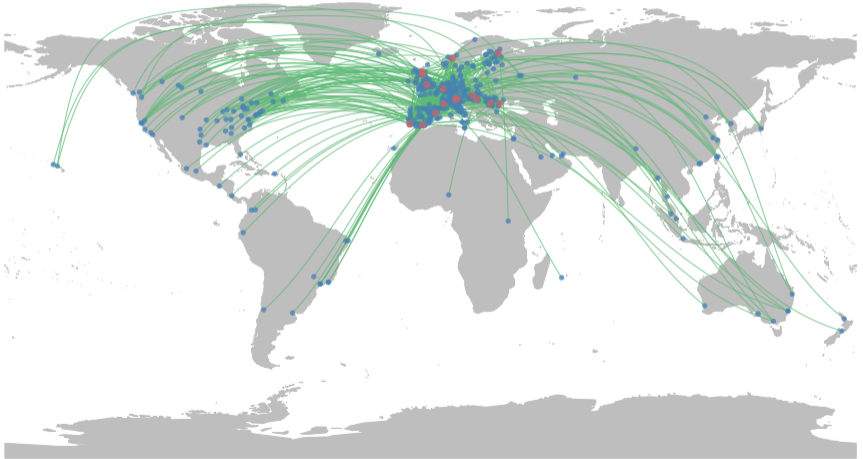
flickr



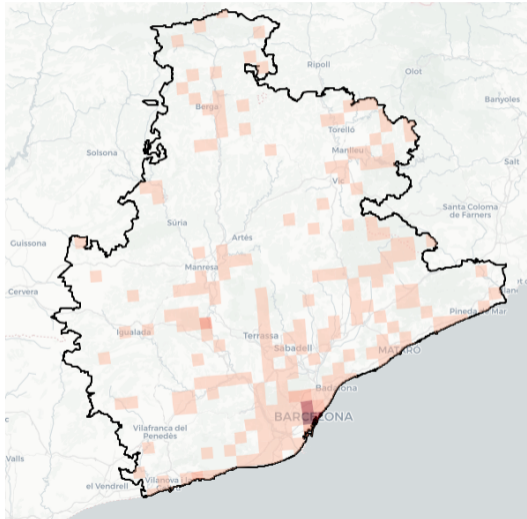
Classify and validate every Flickr photos following the Common International Classification of Ecosystem Services



Multiscale socio-ecological network




Multiscale socio-ecological network



Flickr group & survey

flickr Explore Create

Photos, people, or groups Log In Sign Up



Help us to protect the environment! [+ Join Group](#)

416 Members • 5.8K Photos • 3 Discussions

Group Since June 11, 2017







[Overview](#) [Discussions](#) [Photos](#) [Members](#) [Map](#)

Photo pool

[View 5,800 photos](#)

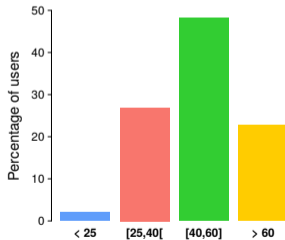
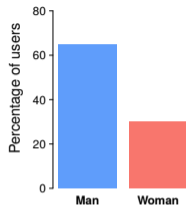
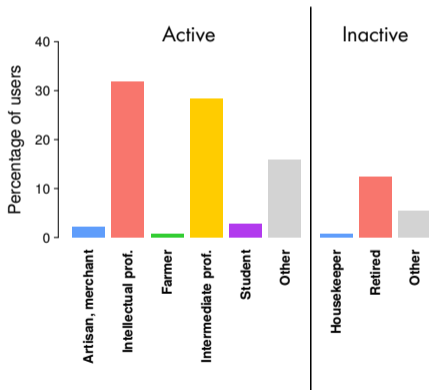


Discussions

Title	Author	Replies	Last Replier	Latest Post
Clarification about the study	 SP.Pictures	4	 Fouaustal PRO	2 months ago
©	 joepdeumes PRO	2	 joepdeumes PRO	3 months ago
FAQ	 SP.Pictures	3	 SP.Pictures	3 months ago

Flickr group & survey

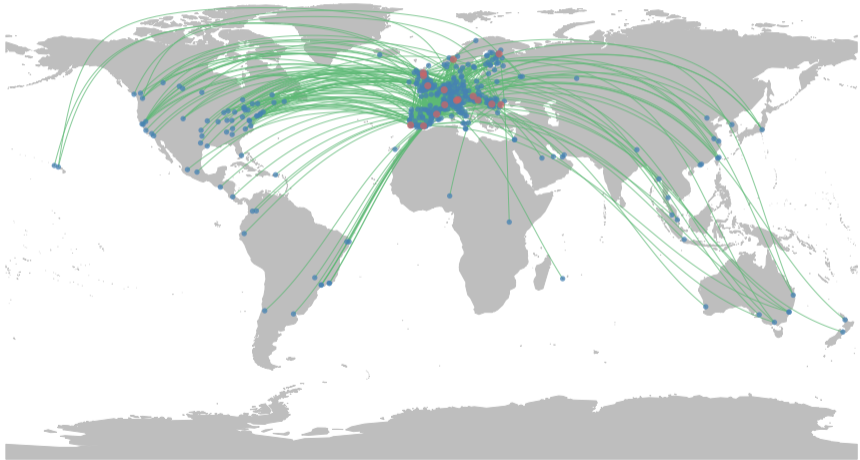
11% response rate



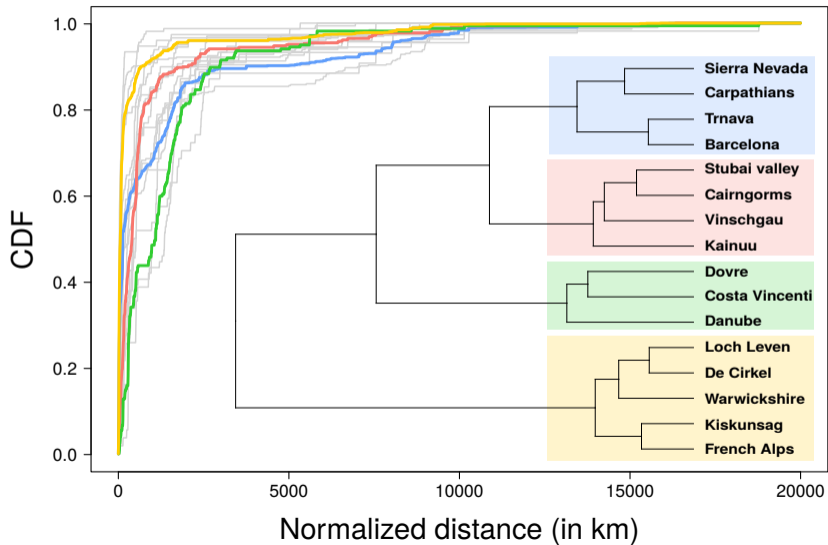
90% of accuracy in the users' place of residence detection!

How does the distance to a site influence the way people explore and interact with this site?

Sites' attractiveness

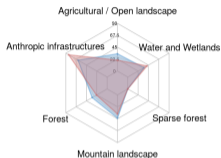


Sites' attractiveness

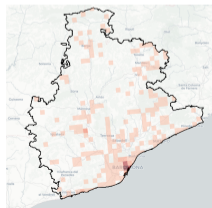


Distribution of interactions

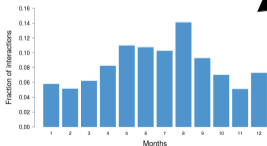
Landscape diversity



Space (cells)



Time (months)

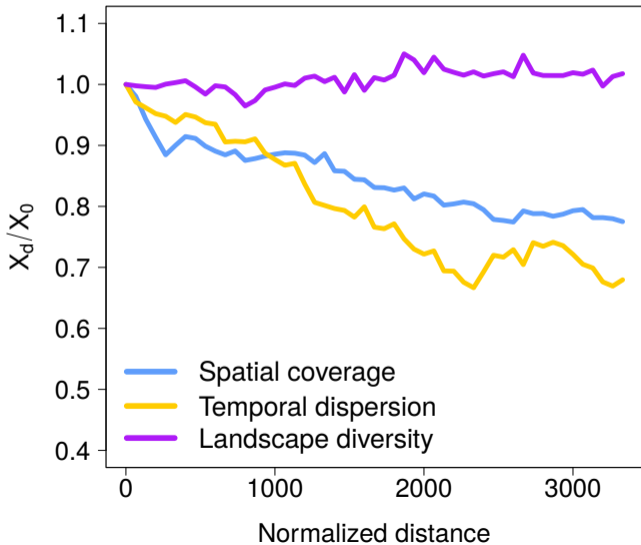


Effect of the distance traveled

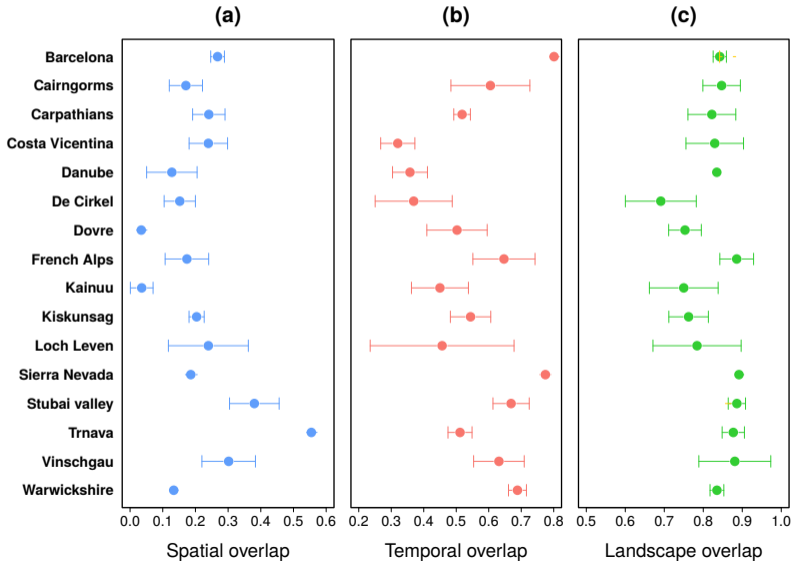


**Impact of the distance
on the distribution**

Median effect



Locals & visitors overlaps



Take home message

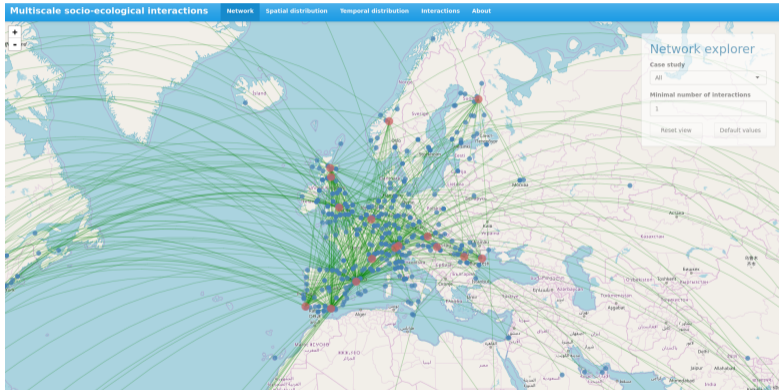
Modelling of social-ecological interactions
with a spatio-temporal network & ICT data

**Diversity of spatio-temporal contexts,
individuals and type of interactions**



Resilience planning

AHIA project outputs



<https://www.maximelenormand.com/Codes/>