



airGR and airGRteaching: two packages for rainfall-runoff modeling and teaching hydrology

Olivier Delaigue, Guillaume Thirel, Laurent Coron, Pierre Brigode

► To cite this version:

Olivier Delaigue, Guillaume Thirel, Laurent Coron, Pierre Brigode. airGR and airGRteaching: two packages for rainfall-runoff modeling and teaching hydrology. 15th edition of the International R User Conference, Jul 2019, Toulouse, France. pp.1, 2019. hal-02609956

HAL Id: hal-02609956

<https://hal.inrae.fr/hal-02609956>

Submitted on 16 May 2020

HAL is a multi-disciplinary open access archive for the deposit and dissemination of scientific research documents, whether they are published or not. The documents may come from teaching and research institutions in France or abroad, or from public or private research centers.

L'archive ouverte pluridisciplinaire **HAL**, est destinée au dépôt et à la diffusion de documents scientifiques de niveau recherche, publiés ou non, émanant des établissements d'enseignement et de recherche français ou étrangers, des laboratoires publics ou privés.

airGR & airGRteaching: two packages for rainfall-runoff modeling and teaching hydrology

Olivier Delaigue¹, Guillaume Thirel¹, Laurent Coron² & Pierre Brigode³

¹ IRSTEA – Hydrology Research Group (HYCAR) – Antony, France

² EDF – PMC Hydrometeorological Center – Toulouse, France

³ Nice-Sophia-Antipolis University – Géoazur UMR 7329 – Sophia-Antipolis, France



The use of R is growing fast in hydrology, as it covers all the steps necessary to lead complete hydrological studies (Slater *et al.*, 2019). GR is a suite of lumped hydrological models designed for flow simulation at various time steps. The models are available in the airGR package and can easily be implemented on a set of catchments with limited data requirements. airGRteaching is an add-on to airGR which simplifies its use and is more specifically oriented towards teaching.

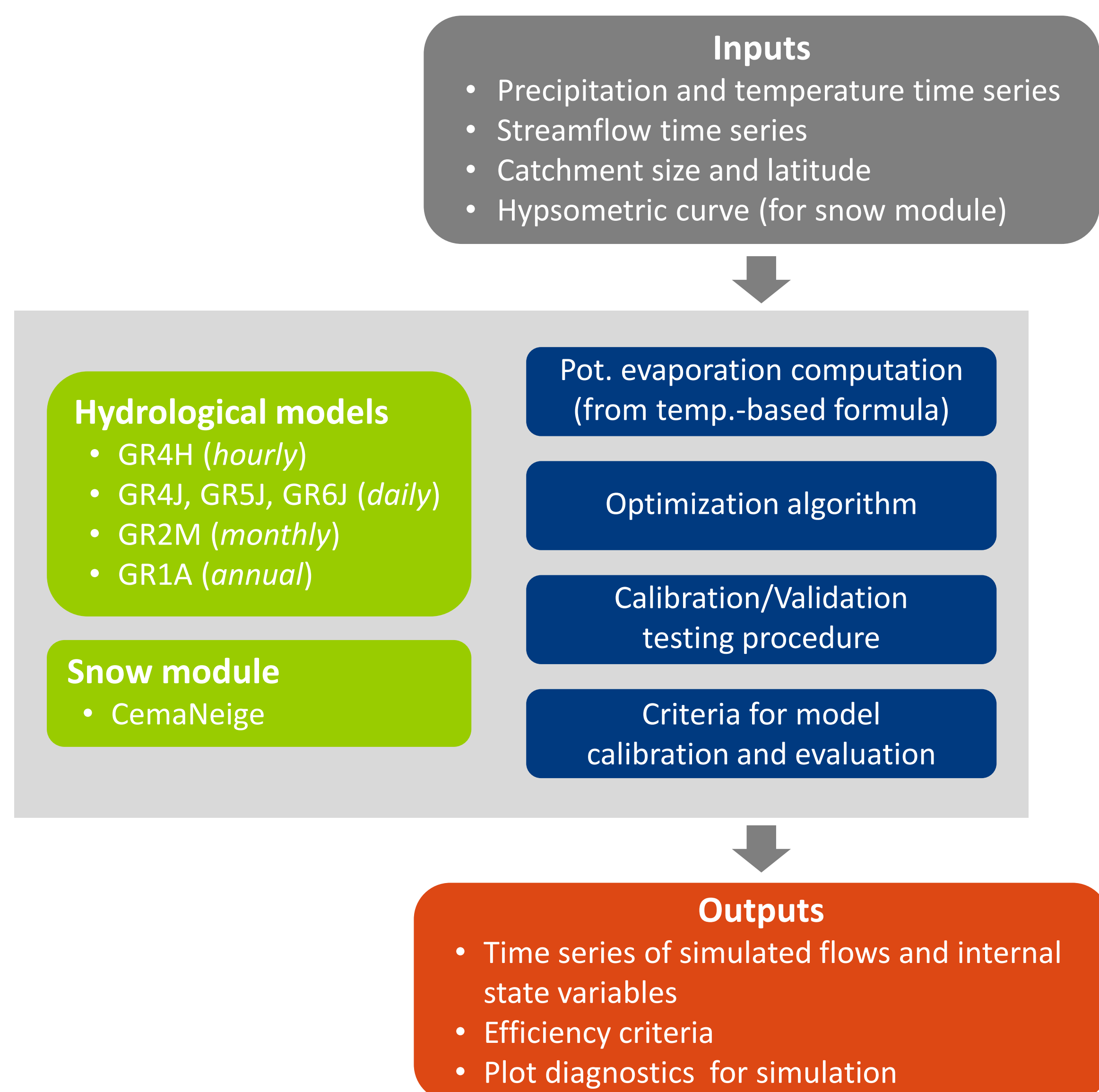
GR hydrological models

- Designed with the objective to be as efficient as possible for flow simulation at various time steps (from hourly to annual)
- Warranted complexity structures and limited data requirements
- Can be applied on a wide range of conditions, including snowy catchments (CemaNeige snow routine included)

From airGR to airGRteaching

- The GR hydrological models have been implemented in airGR (Coron *et al.*, 2019)
- airGRteaching (Delaigue *et al.*, 2019) depends on airGR. It offers simplified functionalities that are particularly suitable for teaching hydrology

Main components of the airGR package



airGRteaching functionalities

- The package only requires a basic level of programming
- Three functions are sufficient to implement the modeling chain:
 - data preparation (PerpGR())
 - model calibration (CalGR())
 - flow simulation (SimGR())
- Static and dynamic plots can be applied on outputs of aforementioned functions
- The package proposes a Shiny interface allowing to realize:
 - simulations of flows by manual modification of parameters
 - automatic model calibrations
 - visualization of the internal states of the model

airGRteaching GUI allowing to understand the roles of parameters and internal variables of models



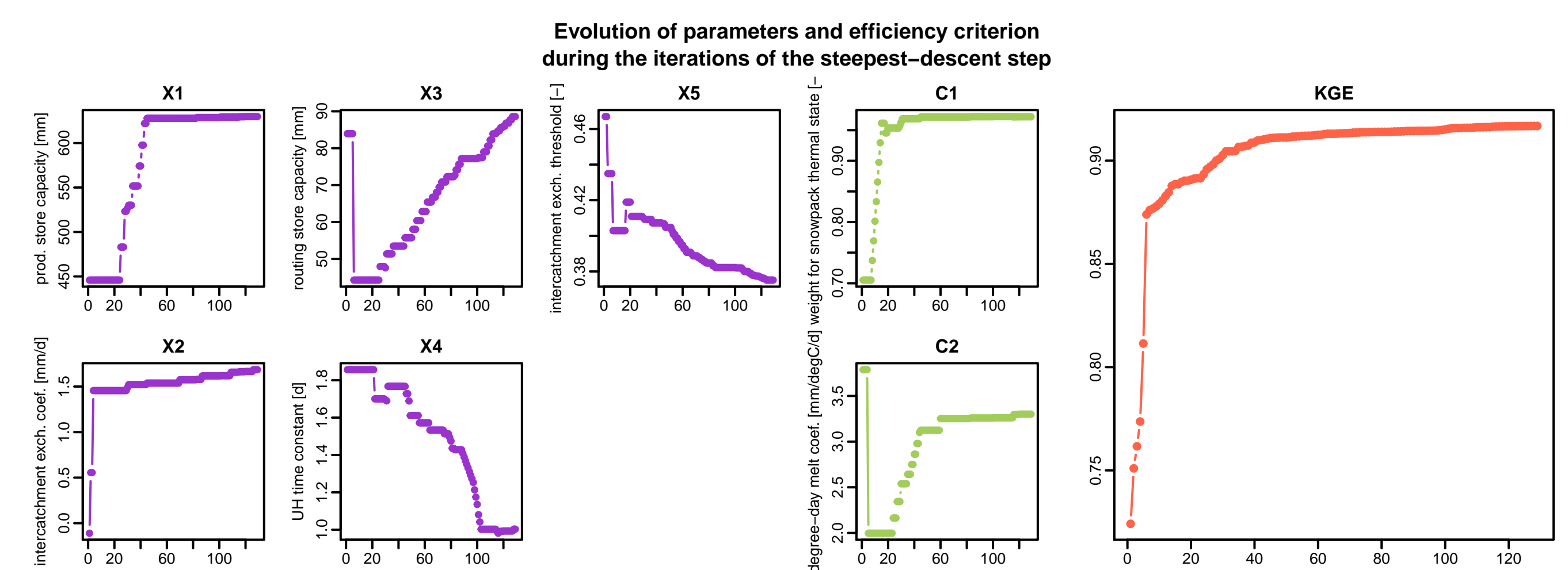
Data preparation, calibration and simulation with the GR5J model (+ CemaNeige snow module)

```
## data.frame of observed data
data(L0123002)
BasinObs <- BasinObs[, c("Dates", "Precip", "ETP", "Qmm", "Temp")]

## preparation of observed data for modeling
Prep <- PrepGR(ObjDF = BasinObs, HydroModel = "GR5J", CemaNeige = TRUE,
               ZInputs = median(BasinInfo$HypsoData), HypsoData = BasinInfo$HypsoData)

## calibration step
Cal <- CalGR(PrepGR = Prep, CalCrit = "KGE", verbose = FALSE,
             WupPer = NULL, CalPer = c("1990-01-01", "1993-12-31"))

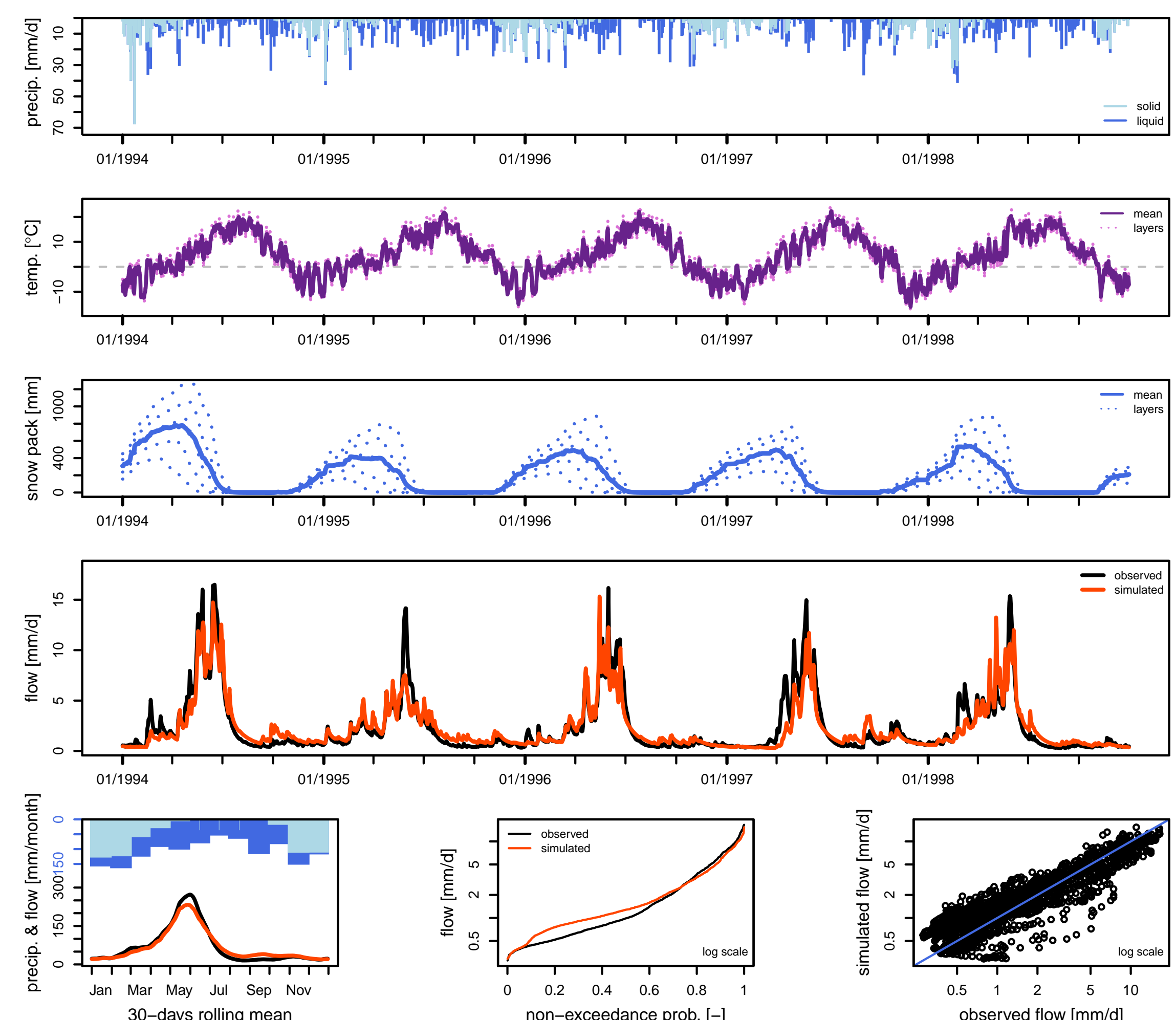
## plot the parameter values and the criterion value during calibration
plot(Cal, which = "iter")
```



```
## simulation step using the result of the automatic calibration method
Sim <- SimGR(PrepGR = Prep, CalGR = Cal, EffCrit = "NSE",
             WupPer = NULL, SimPer = c("1994-01-01", "1998-12-31"))
```

Crit. NSE[Q] = 0.8376

```
## plot giving an overview of the model outputs
plot(Sim)
```



airGR websites: get started with the packages or discover advanced uses

- High degree of customization with airGR
 - <https://hydrogr.github.io/airGR/>
- Simple features to learn hydrology with airGRteaching
 - <https://hydrogr.github.io/airGRteaching/>

References

- Coron L., Delaigue, O., Thirel, G., Perrin C., Michel C. (2019). airGR: Suite of GR Hydrological Models for Precipitation-Runoff Modelling. R package version 1.2.13.16. URL: <https://CRAN.R-project.org/package=airGR>.
- Delaigue, O., Coron, L. and Brigode, P. (2019). airGRteaching: Teaching Hydrological Modelling with GR (Shiny Interface Included). R package version 0.3.6.29. URL: <https://CRAN.R-project.org/package=airGRteaching>.
- Slater, L., Thirel, G., Harrigan, S., Delaigue, O., Hurley, A., Khouakhi, A., Prodoscimi, I., Vitolo, C. & Smith, K. (2019). Using R in hydrology: a review of recent developments and future directions. Hydrology and Earth System Sciences, 1-33. DOI: 10.5194/hess-2019-50.

National Research Institute
of Science and Technology
for Environment and Agriculture

