



HAL
open science

Comparison between standardized sensory methods used to evaluate the mousy off-flavor in red wine

Sophie Tempere, Bertrand Chatelet, Gilles de Revel, Maxime Dufour, Marie Denat, Pierre-Yves Ramonet, Stéphanie Marchand, Mohand Sadoudi, Nicolas Richard, Patrick Lucas, et al.

► To cite this version:

Sophie Tempere, Bertrand Chatelet, Gilles de Revel, Maxime Dufour, Marie Denat, et al.. Comparison between standardized sensory methods used to evaluate the mousy off-flavor in red wine. *OENO One*, 2019, 53 (2), pp.95-105. 10.20870/oeno-one.2019.53.2.2350 . hal-02617781

HAL Id: hal-02617781

<https://hal.inrae.fr/hal-02617781>

Submitted on 25 May 2020

HAL is a multi-disciplinary open access archive for the deposit and dissemination of scientific research documents, whether they are published or not. The documents may come from teaching and research institutions in France or abroad, or from public or private research centers.

L'archive ouverte pluridisciplinaire **HAL**, est destinée au dépôt et à la diffusion de documents scientifiques de niveau recherche, publiés ou non, émanant des établissements d'enseignement et de recherche français ou étrangers, des laboratoires publics ou privés.



Distributed under a Creative Commons Attribution - NonCommercial 4.0 International License

Comparison between standardized sensory methods used to evaluate the mousy off-flavor in red wine

Sophie Tempère^{1,2,*}, Bertrand Chatelet³, Gilles de Revel^{1,2}, Maxime Dufour^{1,2}, Marie Denat^{1,2}, Pierre-Yves Ramonet^{1,2}, Stéphanie Marchand^{1,2}, Mohand Sadoudi⁴, Nicolas Richard⁴, Patrick Lucas^{1,2}, Cécile Miot-Sertier^{1,2}, Olivier Claisse^{1,2}, Laurent Riquier^{1,2}, Marie-Claire Perello^{1,2} and Patricia Ballestra^{1,2,*}

¹Univ. Bordeaux, ISVV, EA 4577 Œnologie, F-33140, Villenave d'Ornon, France

²Inra, ISVV, USC 1366 Œnologie, F-33140, Villenave d'Ornon, France

³Sicarex Beaujolais / IFV, F-69661, Villefranche, France

⁴Inter-Rhône, F-84100, Orange, France

Corresponding author: sophie.tempere@u-bordeaux.fr

ABSTRACT

The variation in descriptors for mousy off-flavor may be related to the different compounds involved in this spoilage, their concentrations, the matrix effect, individual detection abilities, the composition of a subject's saliva, and the pH of the tongue's surface. These different sources of variability partly explain the lack of consensus concerning the perception of this defect in wine. Several different sensory methods have been developed by wine professionals and scientists, based on the pH-dependency affecting the perception of some key mousy compounds. The objective of this study was to compare different sensory methods for detecting mousy character in red wine under standardized conditions, using alkaline paper strips and pH adjustment. Among the methods tested, adjusting pH to around 5 increased the consensus among tasters, and the detection and discrimination capacities of panelists.

KEYWORDS

wine defect, mousy character, sensory analysis, pH-dependent perception

INTRODUCTION

The mousy off-flavor in wine is, in part, caused by microbial spoilage. This wine defect has reappeared in recent years and is sometimes associated with the significant decrease in the use of sulfur dioxide, the increase in pH, and the use of native microbiota (Massini and Vuchot, 2015). To date, three *N*-heterocycle bases, namely 2-acetyltetrahydropyridine (ATHP) (Strauss and Heresztyn, 1984), 2-ethyltetrahydropyridine (ETHP) (Craig and Heresztyn, 1984), and 2-acetyl-1-pyrroline (APY) (Herderich *et al.*, 1995) have been identified as being responsible for the mousy off-flavor in wine. The simultaneous presence of at least two of these compounds is necessary for the off-flavor to be perceptible (Costello *et al.*, 2001). Considering its concentrations in wine and detection threshold values (Table 1), the contribution of ETHP to the mousy character may be less significant than that of ATHP and APY.

Production of mousy *N*-heterocycles in wines is attributed to yeasts in the *Brettanomyces* genus and some wine lactic acid bacteria (LAB) in the *Lactobacillus* genus or *Oenococcus oeni* species. Several strains of *B. anomala* and *B. bruxellensis* known to be associated with the spoilage of wine or other fermented beverages have been shown to produce a mousy taint when fermenting grape juice or when re-inoculated into sound wines (Heresztyn, 1986; Grbin and Henschke, 2000; Romano *et al.*, 2008). Their ability to produce ATHP, ETHP, and, to a smaller extent, APY, has been confirmed using media supplemented with various chemicals, including ethanol, lysine, and ornithine (Heresztyn, 1986; Grbin *et al.*, 1996; Grbin *et al.*, 2007; Romano *et al.*, 2008). The first LAB species linked to mousy off-flavor were strains of *L. hilgardii* and *L. brevis* (Tucknott, 1977; Heresztyn, 1986). These bacteria have been shown to produce large amounts of ATHP and smaller quantities of APY and ETHP when incubated in a synthetic medium (Costello and Henschke, 2002). Several *O. oeni* strains have also been found to produce a strong mousy off-flavor in a grape juice medium supplemented with ethanol. These strains produced all three *N*-heterocycles, including ETHP, at concentrations higher than those of other LAB strains (Costello *et al.*, 2001).

Mousy character is described as a particularly unpleasant defect (Peynaud and Domercq, 1956)

TABLE 1. Detection threshold values and average concentrations of the key mousy compounds in spoiled wines.

Compound	Detection thresholds		Concentrations in spoiled wine			
	Conditions	Values	References	Conditions	Values	References
ETHP	In white wine, by retronasal evaluation	150 µg/L	Craig and Heresztyn, 1984	Spoiled wines	< 150 µg/L	Grbin <i>et al.</i> , 1996
	In ultra-pure water, by orthonasal evaluation – 3-AFC methodology	140.5 µg/L	Unpublished personal data	Production by some strains of lactic acid bacteria	162 µg/L	Costello <i>et al.</i> , 2001
ATHP	In water, by orthonasal evaluation – 2-AFC methodology	1.6 µg/L	Teranishi <i>et al.</i> , 1975	Spoiled wines	From 4.8 to 106 µg/L	Grbin <i>et al.</i> , 1996
	In ultra-pure water, by orthonasal evaluation – 3-AFC methodology	0.09 µg/L	Unpublished personal data			
APY	In water, by orthonasal evaluation – 2-AFC methodology	0.1 µg/L	Buttery <i>et al.</i> , 1983	Spoiled wines	7.8 µg/L	Snowdon <i>et al.</i> , 2006
	In ultra-pure water, by orthonasal evaluation – 3-AFC methodology	0.06 µg/L	Unpublished personal data			

reminiscent of rodent urine (dirty mouse cage), and grilled foods, such as popcorn, rice, crackers, and bread crust (Tucknott, 1974; Buttery *et al.*, 1983; Strauss and Heresztyn, 1984; Herderich *et al.*, 1995; Bartowsky, 2009). Some tasters also mention dried sausage skin, vomit, or dirty mops. The variation in descriptors for mousy off-flavor may be related to the different compounds involved in this spoilage, their concentrations, the matrix effect, and individual detection abilities (Snowdon *et al.*, 2006).

From a sensory point of view, a lack of consensus has been observed in the detection, identification, and characterization of mousy off-flavor in wine. Interindividual differences in sensitivity to the various key compounds directly affect the quantitative and qualitative evaluation of this mousy off-flavor. For APY, individual detection threshold measurement (olfactory sensitivity evaluation) revealed that the dilution factor between the lowest and highest concentrations exceeded one thousand (personal data obtained with 23 subjects). Moreover, one taster may be sensitive to APY and less sensitive or specifically anosmic to the other chemical markers.

Other sources of differences between subjects have been observed. This defect is perceived during retronasal evaluation, when wine comes into contact with saliva (Bartowsky and Henschke, 1995), and may persist in the mouth for more than 10 minutes after swallowing or spitting (Grbin *et al.*, 1996). Indeed, APY, ETHP, and ATHP are not sufficiently volatile to be perceived on the nose at wine pH (Bartowsky and Henschke, 1995). In this case, the more polar amino form of the ATHP tautomeric pair is favored (Grbin *et al.*, 1996). Oral pH is higher (near 7) than that of wine (from 2.8 to 3.8) (Obreque-Slier *et al.*, 2016), thus explaining enhanced perception of this defect during retronasal evaluation. Neutral pH favors the imino form that is less polar than the protonated one. Grbin *et al.* (1996) reported a correlation between the composition of an individual's saliva, the pH of the tongue's surface, and the ability to detect the mousy character. However, wide interindividual variations in oral pH have been observed, between 5.76 and 7.96 (Larsen *et al.*, 1999). An average intraindividual variation of 0.91 was also observed according to the food consumed, the time of day and the physiological state of the subject. Moreover, a recent study

demonstrated that the buffering capacity of wine prevailed over that of saliva (Obreque-Slier *et al.*, 2016). A few microliters (less than 0.3 mL) of wine mixed with the mouth saliva for 15 seconds were sufficient to decrease the pH of saliva by 1 unit.

These different sources of variability partly explain the lack of consensus concerning the perception of this defect in wine. Several different sensory methods have been developed by wine professionals and scientists, based on the pH-dependency affecting the perception of some key mousy compounds.

The first method is the "Palm & Sniff" technique, where one drop of wine is placed on the back of the hand and then the skin is sniffed (Grbin *et al.*, 1996). This method was already mentioned by Peynaud and Domercq (1956). Skin has a higher pH than wine, so it is speculated that this method increases the volatility of the mousy off-flavor marker compounds. Several authors also propose using alkaline paper strips dipped into culture media or wine to assess the presence of mousy character (Heresztyn, 1986; Costello *et al.*, 1993; Grbin and Henschke, 2000). The sodium hydroxide on the strip promotes the formation of the volatile tautomer of the mousy compound. Oxidation also seems to play an important role in the stability of this compound and, consequently, the perception of this defect (Weerawatanakorn *et al.*, 2015).

Surprisingly, from an enological point of view, some wines express mousy taint after oxidation (Grbin *et al.*, 1996). Considering the instability of APY and ATHP in the presence of oxygen (Weerawatanakorn *et al.*, 2015) and contrasting results showing that wine oxidation has a positive influence on mousy taint, the mechanisms behind the expression of mousy off-flavor are clearly complex.

These techniques provide an orthonasal evaluation of wines, with the aim of improving detection of this defect, but it is unclear whether these techniques also improve tasters' assessments and consensus among them.

The objective of this study was to compare different sensory methods for detecting mousy character under standardized conditions, using alkaline paper strips and pH adjustment. The "Palm & Sniff" technique was not tested, as it did not minimize interindividual variations,

potentially due to wide variations in skin pH (Lambers *et al.*, 2006).

Three different stages were considered in this research. In the first experiment, consensus between the subjects was evaluated using intensity-scoring tasks. In the second experiment, ranking tests were used to assess the discrimination ability of the panel. Finally, detection threshold measurements in wine were used to assess changes in individual detection ability after pH adjustment.

MATERIALS AND METHODS

1. General conditions

Sensory analyses were performed according to the relevant ISO standards. Samples were evaluated in individual booths in a ventilated tasting room at controlled room temperature (ISO 8589, 2010). All samples were evaluated only orthonasally (all data were collected via olfaction alone).

2. Judges

Judges were selected on the basis of availability and interest. Participants in the sensory panels were volunteers. All panelists were research laboratory staff from ISVV, Bordeaux University, with equivalent homogeneous sensory expertise, who performed discrimination and descriptive tests regularly (at least twice a week). They were especially familiarized with the detection of off-flavors in wines. Moreover, they shared a common representation of the mousy character.

Some of the assessors were unable to participate in the whole testing program due to timetable conflicts. The whole test was divided into three sessions, consisting of different sensory tasks: the mousy intensity-scoring task, the ranking test, and detection threshold measurements. The intensity-scoring and detection ability experiments were carried out by 18 assessors and the ranking task by 24 participants. On average, 76% of women participated in each session. The age of the participants ranged from 23 to 53 years (mean \pm SD, 34 \pm 9).

3. Sample preparation

During each session, several sample preparation techniques were tested, using alkalized paper strips or pH adjustment with sodium bicarbonate [144-55-8]. Human saliva contains this mild

base, which predominantly buffers oral pH (carbonate/bicarbonate pair - Obreque-Slier *et al.*, 2016). The paper strip method followed the protocol proposed by Costello *et al.* (2001), using blotters (7140-BC-SI - Granger-Veyron) and sodium hydroxide solution (0.1 M). The alkalized strip was then immersed in 1 mL wine and placed in coded brown bottles (30 mL, open diameter = 2 cm, with phenolic resin caps and PTFE joints (VWR; Fontenay-Sous-Bois, France)) (modality 1).

Two pH adjustments similar to buccal values were tested. The wine was supplemented with 5 or 33 g/L sodium bicarbonate to adjust the pH to $5 < \text{pH} < 5.5$ (modality 2) or $7 < \text{pH} < 7.5$ (modality 3), respectively. Then, a 25 mL sample of each wine was presented for orthonasal evaluation in a coded black INAO glass covered with a Petri dish. Detection thresholds were measured in brown bottles (30 mL, open diameter = 2 cm, with phenolic resin caps and PTFE joints (VWR; Fontenay-Sous-Bois, France), as described in the protocol section.

Sample preparation time was standardized to avoid sampling bias. All samples were prepared 2 hours before the sensory session.

4. Stimuli

4.1 Intensity-scoring task

Seven wines were evaluated by the panel with the aim of measuring perceived mousy character intensity in a scoring task, using the four sample modalities: control without pH adjustment and modalities 1, 2 and 3 (Table 2).

The wine samples included potentially spoiled wines (MO, CH, GA), and a standard wine (PO) supplemented with APY [99583-29-6] (Ark Pharm Inc., 10% in triacetin). Moreover, clarified supernatants (CS) of Costello culture media inoculated with supposed positive strains for mousy character production (one strain of *O. oeni* CRBO0501, coded CS1, and one of *B. bruxellensis* CRBOL0509, coded CS2) were also used to contaminate wine. These stimuli were used to counteract the commercial unavailability of some key mousy compounds (ATHP and ETHP) and the possibility that other compounds may contribute to the mousy off-flavor.

4.2 Ranking test

A standard red wine (Gamay – Pays d’Oc 2015) was supplemented with APY [99583-29-6] (Ark

TABLE 2. Description of red wines used in the scoring test and their pH characteristics according to the test modalities.

Sample characteristics		pH value		
		Control modality	Modality 2	Modality 3
PO	Pays d'Oc – 2015	3.48	5.16	7.05
MO	Morgon – 2015	3.42	5.11	7.01
CH	Chiroubles – 2015	3.54	5.15	7.06
GA	Gamay – 2015	3.62	5.38	7.09
POlowAPY	Pays d'Oc, 2015 + 1.32 µg/L APY	3.48	5.16	7.05
POhighAPY	Pays d'Oc, 2015 + 13.2 µg/L APY	3.48	5.16	7.05
POCS1	Pays d'Oc, 2015 + 2 mL CS1	3.48	5.16	7.05
POCS2	Pays d'Oc, 2015 + 2 mL CS2	3.48	5.16	7.05

Modality 1 corresponded to the paper strip method, for which no precise pH measurement can be performed.

Pharm Inc., 10% in triacetin). The concentrations added to the standard wine were in accordance with those found in wines (Grbin *et al.*, 1996), as follows: [C1] = 5, [C2] = 15, [C3] = 45 and [C4] = 135 µg/L.

According to the results of the intensity-scoring tasks, three sample preparation modalities were tested: control without pH adjustment and modalities 2 and 3. The pH values of the control, modality 2, and modality 3 samples were 3, 5.01, and 7.02, respectively.

4.3 Detection threshold measurements

The detection threshold was measured in the standard wine (pH = 3.2) and in the same wine after pH adjustment to 5.05. The modality order was randomized among the participants. The perithreshold concentration ranges of APY (from 0.4 to 400 µg/L) to be used were determined on the basis of preliminary experiments and were consistent with those measured in wines (Grbin *et al.*, 1996). The concentration ranges followed a geometric dilution series with a factor of 2. Four milliliters of stimulus were presented in randomly-coded brown bottles.

Only APY was tested in the ranking task or in the threshold measurement, because ATHP and ETHP were not commercially available. Moreover, APY is one of the compounds contributing the most to the mousy character.

5. Protocol – Tasks performed by the panel

5.1 Intensity-scoring task

For each modality, the perceived intensity of the mousy character in seven samples was evaluated

by marking a cross on a 10 cm continuous scale (from “no mousy character” to “intense mousy character”) (ISO 4121, 2004). It was specified that this defect is associated with different descriptors such as rodent urine, popcorn, rice, crackers, bread crust, dried sausage skin, vomit, or a dirty mop. A sample of the standard red wine was presented to the panelists at the beginning of each test per modality. This sample was representative of a wine without mousy character.

The sample presentation order was randomized among the participants. Subjects carried out the four modalities in the same session, but were advised to take some breaks between each series of samples. The order of testing the four sample preparation modalities was also randomized.

Principal component analysis was carried out on the sample x assessor matrices for each modality. In each case, consensus was tested by computing the Kendall concordance coefficient (W).

However, as violation of statistical assumptions of ANOVA was observed (Levene' and Shapiro-Wilk's tests were performed to test the equality of variances and residual normality, respectively), a non-parametric test was applied: Friedman's tests with Nemenyi pairwise comparison (non-parametric statistics) were used to evaluate wine discrimination. All the statistics were calculated using the XLSTAT, 2018.3, Addinsoft software.

5.2 Ranking test

For each modality, the panel performed a ranking test (ISO 8587, 2007), sorting four samples according to their mousy character, from least to most intense. Ties were not allowed. Sample order was randomized among panelists.

The results of these ranking tests with a known order of intensity were statistically interpreted using the Page test (NF ISO 8587, 2006). The following statistical treatment was applied for each modality. For each judge, a value between 1 and 4 was attributed to each sample, depending on the assessor's response (1 for the least intense, 4 for the most intense). The sums of the rankings were calculated for each sample, then the parameters L and L' were calculated.

$$L = 1 \times S_1 + 2 \times S_2 + 3 \times S_3 + 4 \times S_4$$

where S_1 , S_2 , S_3 , S_4 = sums of rank for concentration 1, 2, 3, and 4, respectively.

$$L' = \frac{12L - 3JP(P+1)^2}{P(P+1)\sqrt{J(P-1)}}$$

where J = number of panelists, P = number of products.

L' was compared to reported values of the reduced normal law to determine whether the test results were significant for the factor concerned (to conclude to a significant ranking, $L' \geq 1.645$, $\alpha = 0.05$). The Cabilio-Peng procedure was used for pairwise multiple comparisons (XLSTAT, 2018.3, Addinsoft).

5.3 Detection threshold measurements

Detection thresholds were estimated by the three-alternative, forced-choice presentation method (3AFC - ISO 13301, 2002), using ascending concentrations. At each level, participants were given a series of three bottles. One bottle contained the odorized wine and two blanks contained unaltered wine. Subjects were instructed to decide which of the three samples was different. As the purpose of the study was to compare the subjects' olfactory abilities at various pH, the same series was presented to each subject.

The individual detection threshold was estimated as the geometrical mean between the last concentration missed and the first concentration

detected, when a participant made three consecutive correct choices (Wise *et al.*, 2008; Tempère *et al.*, 2011).

The concentration/response function fitted by a sigmoid curve ($y = 1/(1 + e^{-\lambda x})$) was designated a psychometric function and used to determine the group threshold. The probability was corrected with the chance factor for detection: 1/3. The software used for graphic resolution and non-linear regression by ANOVA transform was Sigma Plot 13 (2014, Systat Software, Inc.).

RESULTS

1. Intensity-scoring task

This experiment revealed different patterns of interindividual consistency for the four preparation modalities. Figure 1 shows the loadings of the panelists on the first two principal components of the PCA performed on the mousy intensity scores for each modality. An interindividual consensus was only observed for modality 2 (Figure 1C). All panelists were on the positive side of the first axis (49% of total variance), indicating that they tended to score the wines in a similar way. The second principal component (23% of total variance) revealed interindividual differences in the mousy character assessment. This is in correlation with Figure 2A, showing the projection of wines on the first two components: the whole panel scored two wines (GA and POlowAPY) as not contaminated. Analysis of the second principal component identified two groups of wines: POhighAPY, POCS1, and POCS2 on the positive side of the second principal component and wine CH on the negative side, revealing some interindividual diversity in the panelists' perception of this defect. This variation may be due to the chemical complexity of this defect and interindividual variations in sensitivity among panelists.

Moreover, Friedman's test (Figure 2B) demonstrated that panelists were able to discriminate among different APY levels in standard wine. A significant difference ($p < 0.05$) was observed between wines POlowAPY (mean \pm confidence interval = 1.6 ± 0.8) and POhighAPY (mean \pm confidence interval = 5.5 ± 1.2).

Correlation was poorer between panelists' scores for control, modality 1 and modality 3, but better

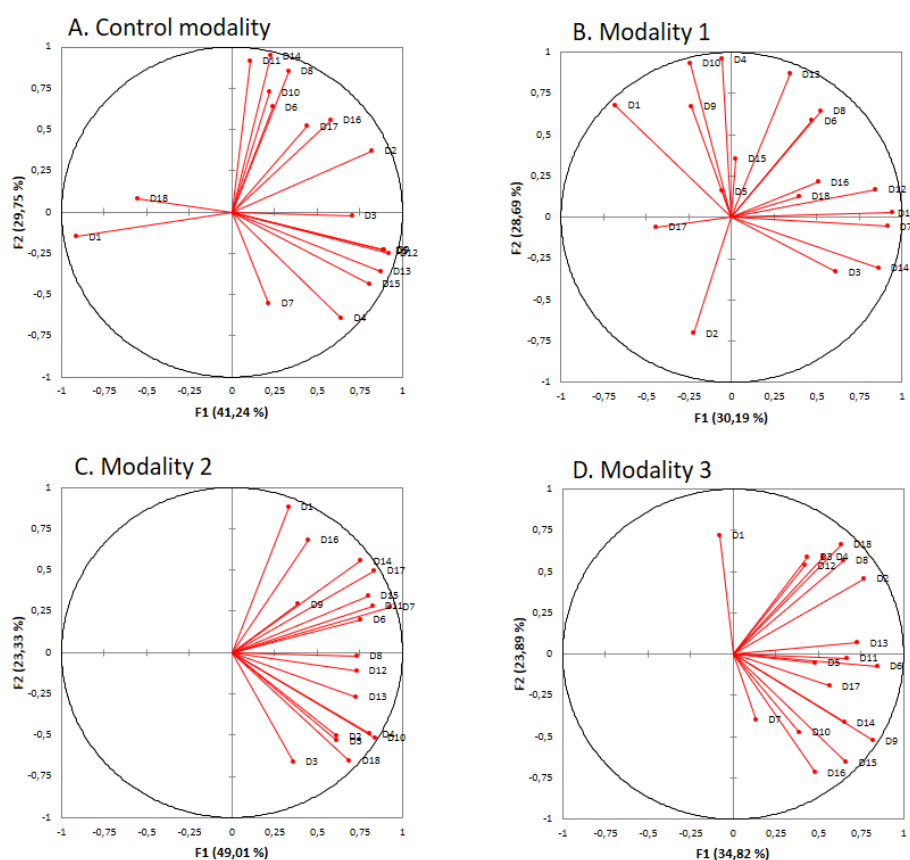


FIGURE 1. Correlation circles for mousy character scores according to the different modalities. A. Control condition, B. Modality 1 (paper strip), C. Modality 2 (pH adjusted to around 5), D. Modality 3 (pH adjusted to around 7).

for modality 2. This visual interpretation was validated by computing the Kendall concordance coefficient (W) for control, modality 1, modality 2, and modality 3, which were 0.17, 0.11, 0.42, and 0.26, respectively. The results obtained for the control modality were consistent with the effect of pH on the perception of mousy character. However, although the paper strip method (modality 1) is commonly used, it was not, apparently, adapted to wine comparisons. It is probably better-suited to evaluating microorganism culture media.

2. Ranking test

L and L' values for the different ranking tests are reported in Table 3. The L' value must be superior to the critical value, 2.326 (standardized normal distribution), and central limit t to confirm significant discrimination ($p < 0.01$) among samples by the panelists.

Table 3 shows that the judges were generally able to distinguish among samples with different APY levels. However, pairwise multiple

comparisons revealed that the four samples were clearly discriminated only for modality 2.

Control modality and modality 3 were less efficient for discriminating less contaminated samples.

3. Detection threshold measurements

This experiment was designed to explore the impact of pH adjustment on subjects' detection abilities. Individual best estimate thresholds for control modality and modality 2 are shown in Figure 3.

Changes in individual olfactory detection thresholds were observed between control and adjusted pH. The distribution shifted towards lower concentrations with increasing pH.

At wine pH (3.20), the detection thresholds of 94% of panelists were between 15 and 300 $\mu\text{g/L}$. After pH adjustment to 5.05, all individual thresholds were between 0.3 and 30 $\mu\text{g/L}$. The proportion of subjects able to detect the presence

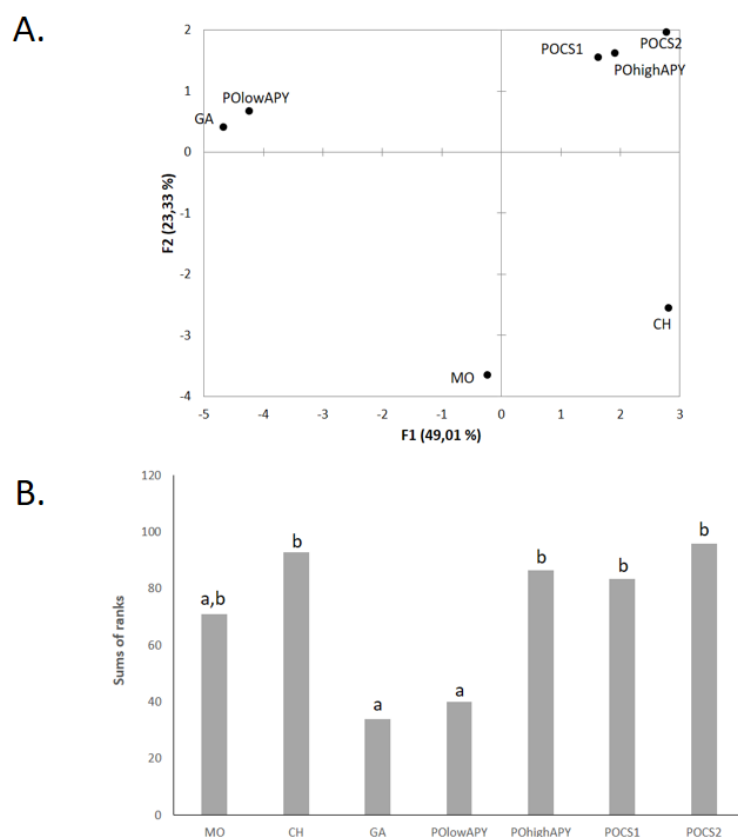


FIGURE 2. Evaluation of the mousy off-flavor in modality 2 (n = 18). A. Projection of wines on the first two components of the principal component analysis. B. Comparison of sums of ranks. Values marked with different letters are significantly different (Friedman test and Nemenyi pairwise comparison test; p < 0.05).

TABLE 3. Results of the different ranking tests.

	Sum of rankings				L	L'	Interpretation
	[C1]	[C2]	[C3]	[C4]			
Control	50 a	56 a	47 a	87 B	651	3.61	**
Modality 2	29 a	45 b	70 c	96 D	713	7.99	**
Modality 3	41 a	49 A	68 b	83 C	675	5.3	**

If L' > 2.326, the ranking is significant (** p < 0.01). The Cabilio-Peng procedure was used for pairwise multiple comparisons and for each ranking test. Values marked with different letters are significantly different (p < 0.05).

of APY at concentrations found in contaminated wines increased from 22 to 100%.

Stimulus-response functions and sigmoid modeling were used to determine absolute thresholds (Figure 4). The absolute detection thresholds (50% of the panelists) for APY were 54.9 µg/L (R² = 0.91) in wine at pH 3.20 and 8.6 µg/L (R² = 0.91) in wine after pH adjustment to 5.05.

The absolute threshold (group threshold) for APY was reduced by a factor of 6.4.

Adjusting pH to an average of 5 facilitated detection of the mousy off-flavor without requiring a retronasal evaluation, a potential source of additional interindividual variations.

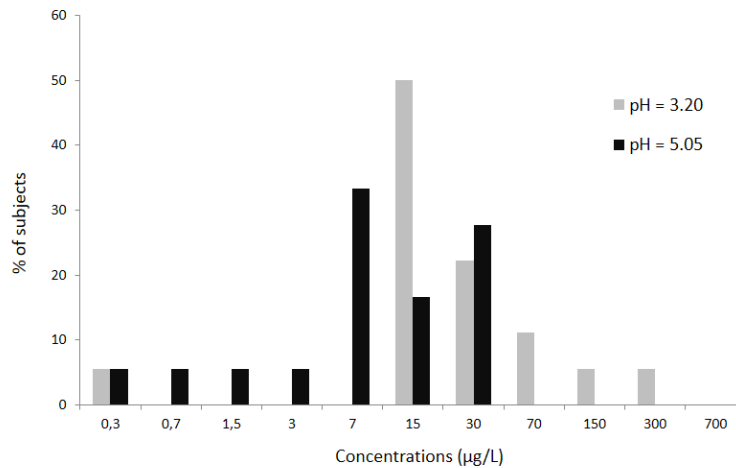


FIGURE 3. Individual detection threshold distribution for APY before and after pH adjustment (n = 18).

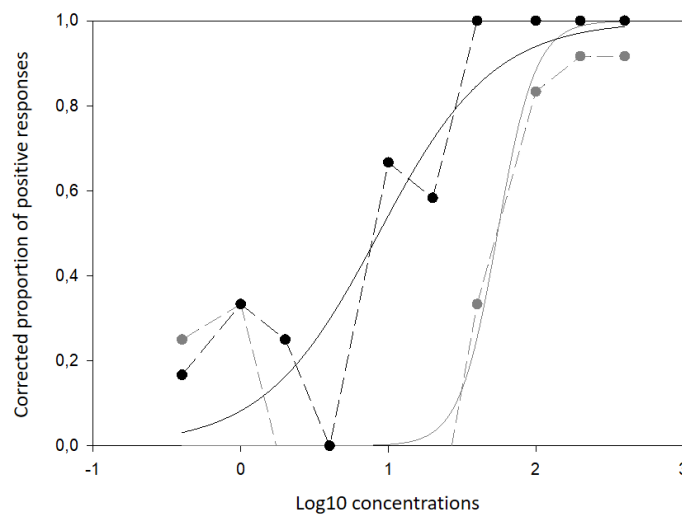


FIGURE 4. Effect of pH on absolute detection thresholds.

Curves represent the stimulus–response function (broken lines) and sigmoid modeling (solid lines) before (pH 3.20 in gray) and after (5.05 in black) pH adjustment. Concentration levels (expressed as log10) are shown on the horizontal axis and corrected positive response proportions (corrected by chance) on the vertical axis.

CONCLUSION

These sensory data complement our knowledge about the standardized sensory methods used to evaluate the mousy off-flavor in wine. This work compares orthonasal evaluation methods, to reduce the interindividual variations due to retronasal evaluation. Among the three methods tested, adjusting pH to around 5 increased the segmentation capacities of panelists. This change in wine pH also ensured a good consensus among the panelists and clear discrimination among the samples, according to the contamination level. The paper strip method resulted in high interindividual diversity and

adjusting pH to around 7 rather than 5 was not as effective. It is important to note that these adjustments do not fully model normal wine tasting conditions. Indeed, although oral pH is similar to the test values (average 7), pronounced decreases in pH are only observed around 15 seconds after tasting (Obreque-Slier *et al.*, 2016). Perhaps adjustment to pH 7 strongly distorts the wine matrix.

Further work is required to compare these sample preparation methods for rosé and white wines, and also to corroborate these results or validate this method with the other key mousy compounds. Moreover, sensory results may be

confronted with analytical data obtained on naturally spoiled wines. Finally, the validation of a standardized method avoiding pH effect may allow to compare the data obtained with experts to consumer acceptance.

Acknowledgements : The authors would like to thank the RMT FIDELE “Produits fermentés et distillés” and the ACTIA program for funding this project.

REFERENCES

- Bartowsky E.J., 2009. Bacterial spoilage of wine and approaches to minimize it. *Letters in Applied Microbiology*, 48(2), 149–156. doi:10.1111/j.1472-765X.2008.02505.x
- Bartowsky E.J. and Henschke P.A., 1995. Malolactic fermentation and wine flavour. *Australian Grapegrower & Winemaker*, 378, 83–94.
- Buttery R.G., Ling L.C., Juliano B.O. and Turnbaugh J.G., 1983. Cooked rice aroma and 2-acetyl-1-pyrroline. *Journal of Agricultural and Food Chemistry*, 31(4), 823–826. doi:10.1021/jf00118a036
- Costello P.J. and Henschke P.A., 2002. Mousy off-flavor of wine: precursors and biosynthesis of the causative N-heterocycles 2-ethyltetrahydropyridine, 2-acetyltetrahydropyridine, and 2-acetyl-1-pyrroline by *Lactobacillus hilgardii* DSM 20176. *Journal of Agricultural and Food Chemistry*, 50(24), 7079–7087. doi:10.1021/jf020341r
- Costello P.J., Lee T.H. and Henschke P.A., 2001. Ability of lactic acid bacteria to produce N-heterocycles causing mousy off-flavour in wine. *Australian Journal of Grape and Wine Research*, 7(3), 160–167. doi:10.1111/j.1755-0238.2001.tb00205.x
- Costello P.J., Stockley C.S., Lee T.H. and Henschke P.A., 1993. Current selection criteria of lactic acid bacteria for malolactic fermentation. In *Proceedings of the Eighth Australian Wine Industry Technical Conference*; Stockley, C. S., Johnstone, R. S., Leske, P. A., Lee, T. H., Eds.; Winetitles, Australia: Adelaide, pp. 142–147.
- Craig J.T. and Heresztyn T., 1984. 2-Ethyl-3,4,5,6-tetrahydropyridine - an assessment of its possible contribution to the mousy off-flavor of wines. *American Journal of Enology and Viticulture*, 35(1), 46–48.
- Grbin P.R., Costello P.J., Herderich M., Markides A.J., Henschke P.A. and Lee T.H., 1996. Developments in the sensory, chemical and microbiological basis of mousy taint in wine. In *Proceedings of the Ninth Australian Wine Industry Technical Conference*; Stockley, C. S., Sas, A. N., Johnstone, R. S., Lee, T. H., Eds.; Winetitles: Adelaide, pp. 57–61.
- Grbin P.R. and Henschke P.A., 2000. Mousy off-flavour production in grape juice and wine by *Dekkera* and *Brettanomyces* yeasts. *Australian Journal of Grape Wine Research*, 6(3), 255–262. doi:10.1111/j.1755-0238.2000.tb00186.x
- Grbin P.R., Herderich M., Markides A., Lee T.H. and Henschke P.A., 2007. The role of lysine amino nitrogen in the biosynthesis of mousy off-flavor compounds by *Dekkera anomala*. *Journal of Agricultural and Food Chemistry*, 55(26), 10872–10879. doi:10.1021/jf071243e
- Herderich M., Costello P. J., Grbin P.R. and Henschke P.A., 1995. Occurrence of 2-acetyl-1-pyrroline in mousy wines. *Natural Product Letters*, 7(2), 129–132. doi:10.1080/10575639508043200
- Heresztyn T., 1986. Formation of substituted tetrahydropyridines by species of *Brettanomyces* and *Lactobacillus* isolated from mousy wines. *American Journal of Enology and Viticulture*, 37(2), 127–132.
- ISO 13301, 2002. Sensory analysis – Methodology – General guidance for measuring odour, flavour and taste detection thresholds by a three-alternative forced-choice (3-AFC) procedure.
- ISO 4121, 2004. Sensory analysis – Methodology – Evaluation of food products by methods using scales. In *Analyse Sensorielle*; AFNOR: Paris, France.
- ISO 8587, 2007. Sensory analysis – Methodology – Ranking. In *Analyse Sensorielle*; AFNOR: Paris, France.
- ISO 8589, 2010. Sensory analysis – General guidance for the design of test rooms. In *Analyse Sensorielle*; AFNOR: Paris, France.
- Lambers, H., Piessens, S., Bloem, A., Pronk, H. and Finkel, P., 2006. Natural skin surface pH is on average below 5, which is beneficial for its resident flora. *International Journal of Cosmetic Science*, 28(5), 359–370. doi:10.1111/j.1467-2494.2006.00344.x
- Larsen M.J., Jensen A.F., Madsen D.M. and Pearce E.I.F., 1999. Individual variations of pH, buffer capacity, and concentrations of calcium and phosphate in unstimulated whole saliva. *Archives of Oral Biology*, 44(2), 111–117. doi:10.1016/S0003-9969(98)00108-3
- Massini L. and Vuchot P., 2015. Mieux cerner le défaut du « goût de souris ». *Le vigneron des Côtes du Rhône et du Sud-Est*, n° 843, 26–27.

- Obreque-Slier E., Espinola-Espínola V. and López-Solís R., 2016. Wine pH prevails over buffering capacity of human saliva. *Journal of Agricultural and Food Chemistry*, 64(43), 8154–8159. doi:10.1021/acs.jafc.6b03013
- Peypaud E. and Domercq S., 1956. Sur les *Brettanomyces* isolés de raisins et de vins. *Archiv für Mikrobiologie*, 24(3), 266–280. doi:10.1007/BF00419012
- Romano A., Perello M.C., de Revel G. and Lonvaud-Funel A., 2008. Growth and volatile compound production by *Brettanomyces/Dekkera bruxellensis* in red wine. *Journal of Applied Microbiology*, 104(6), 1577–1585. doi:10.1111/j.1365-2672.2007.03693.x
- Snowdon E. M., Bowyer M.C., Grbin P.R. and Bowyer P.K., 2006. Mousy off-flavor: a review. *Journal of Agricultural and Food Chemistry*, 54(18), 6465–6474. doi:10.1021/jf0528613
- Strauss C.R. and Heresztyn T., 1984. 2-Acetyltetrahydropyridines – a cause of the “mousy” taint in wine. *Chem. Ind. (London)*, 109–110.
- Tempere S., Cuzange E., Malak J., Bougeant J.C., de Revel G. and Sicard, G., 2011. The training level of experts influences their detection thresholds for key wine compounds. *Chemosensory Perception*, 4(3), 99–115. doi:10.1007/s12078-011-9090-8
- Teranishi R., Buttery R.G. and Guadagni D.G., 1975. Odor, thresholds, and molecular structure. In *Geruch und Geschmackstoffe*; Drawert, F., Ed.; Verlag: Nurnberg, Germany, pp. 177–186.
- Tucknott O.G., 1974. Taints in fermented juice products: mousy taint in cider; Annual Report 1973; Long Ashton Research Station: University of Bristol, p. 159.
- Tucknott O.G., 1977. Mousiness: a taint in fermented beverages. Ph.D. thesis, University of Bristol, Bristol, England.
- Weerawatanakorn M., Wu J.C., Pan, M.H. and Ho C.T., 2015. Reactivity and stability of selected flavor compounds. *Journal of Food and Drug Analysis*, 23(2), 176–190. doi:10.1016/j.jfda.2015.02.001
- Wise P.M., Bien N. and Wysocki C. J., 2008. Two rapid odor threshold methods compared to a modified method of constant stimuli. *Chemosensory Perception*, 1(1), 16–23. doi:10.1007/s12078-008-9010-8