



**HAL**  
open science

## **REBELOTE, a regulator of floral determinacy in Arabidopsis thaliana, interacts with both nucleolar and nucleoplasmic proteins**

Steve de Bossoreille de Ribou, Patrice Morel, Christophe Trehin, Ioan Negrutiu

### ► To cite this version:

Steve de Bossoreille de Ribou, Patrice Morel, Christophe Trehin, Ioan Negrutiu. REBELOTE, a regulator of floral determinacy in Arabidopsis thaliana, interacts with both nucleolar and nucleoplasmic proteins. FEBS Open Bio, 2018, pp.1-22. 10.1002/2211 . hal-02619249

**HAL Id: hal-02619249**

**<https://hal.inrae.fr/hal-02619249>**

Submitted on 25 May 2020

**HAL** is a multi-disciplinary open access archive for the deposit and dissemination of scientific research documents, whether they are published or not. The documents may come from teaching and research institutions in France or abroad, or from public or private research centers.

L'archive ouverte pluridisciplinaire **HAL**, est destinée au dépôt et à la diffusion de documents scientifiques de niveau recherche, publiés ou non, émanant des établissements d'enseignement et de recherche français ou étrangers, des laboratoires publics ou privés.



Distributed under a Creative Commons Attribution - NonCommercial 4.0 International License

Received Date : 27-Apr-2018

Revised Date : 24-Jul-2018

Accepted Date : 30-Jul-2018

Article type : Research Article

# **REBELOTE, a regulator of floral determinacy in *Arabidopsis thaliana*, interacts with both nucleolar and nucleoplasmic proteins**

Stève de Bossoreille, Patrice Morel, Christophe Trehin, Ioan Negrutiu\*

Laboratoire Reproduction et Développement des Plantes, Univ Lyon, ENS de Lyon, UCB Lyon 1, CNRS, INRA, F-69342, Lyon, France

\* Corresponding author

E-mail : ioan.negrutiu@ens-lyon.fr

Abbreviations: RBL: REBELOTE, NOC: Nucleolar Complex, Y2H: yeast 2-hybrid, BiFC: Bimolecular Fluorescent Complementation

This article has been accepted for publication and undergone full peer review but has not been through the copyediting, typesetting, pagination and proofreading process, which may lead to differences between this version and the Version of Record. Please cite this article as doi: 10.1002/2211-5463.12504

FEBS Open Bio (2018) © 2018 The Authors. Published by FEBS Press and John Wiley & Sons Ltd

This is an open access article under the terms of the Creative Commons Attribution License, which permits use, distribution and reproduction in any medium, provided the original work is properly cited.

## Abstract

The nucleoplasm and nucleolus are the two main territories of the nucleus. While specific functions are associated with each of these territories (such as mRNA synthesis in the nucleoplasm and ribosomal rRNA synthesis in the nucleolus), some proteins are known to be located in both. Here, we investigated the molecular function of REBELOTE (RBL), an *Arabidopsis thaliana* protein previously characterized as a regulator of floral meristem termination. We show that RBL displays a dual localization, in the nucleolus and nucleoplasm. Moreover, we used direct and global approaches to demonstrate that RBL interacts with nucleic acid-binding proteins. It binds to the NOC proteins SWA2, AtNOC2 and AtNOC3 in both the nucleolus and nucleoplasm, and also to OBE1 and VFP3/ENAP1. Taking into account the identities of these RBL interactors, we hypothesise that RBL acts both in ribosomal biogenesis and in the regulation of gene expression.

## Running heading

REBELOTE binds nucleolar and nucleoplasmic proteins

## Keywords

Nucleolus, NOC, REBELOTE, OBERON, OBE1, VFP3, ENAP1, *Arabidopsis thaliana*, nucleoplasm.

## Introduction

The nucleolus is known to be the initial site for ribosomal biogenesis. Processes occurring in the nucleolus include the transcription of ribosomal rDNA by RNA polymerase I and the maturation of ribosomal rRNAs, which are processed and assembled with 5S rRNA and ribosomal proteins to form ribonucleoproteins (RNPs), the precursors of the small and large ribosomal subunits [1]. Ribosomal biogenesis involves the regulation of chromatin structure, transcription, RNA processing and export to the cytoplasm. These processes require a precise spatial organization in the nucleus and numerous protein complexes, including the nucleolar Noc complexes first isolated in yeast [2], [3].

However, the functions of nucleolar proteins are not restricted to ribosomal biogenesis. Interestingly, several studies have shown the nucleolus to contain proteins unrelated to this process and which are known to be additionally present in other sub-cellular compartments [4–6]. For example, it has been shown in *Arabidopsis thaliana* that some of these proteins, such as ALY4, are present in the nucleolus and in nuclear speckles,

including those corresponding to exon-junction-complexes, that are involved in mRNA metabolism [6]. In addition, it has been shown that some proteins involved in ribosomal biogenesis, including ribosomal proteins, are also involved in specific developmental processes in *A. thaliana* [7,8]. This is the case for SHORT VALVE 1 (RPL24b), which is involved in gynoecium development [9].

Among the proteins involved in ribosomal biogenesis are the NOC2 proteins [3]. This family includes nucleolar proteins harbouring a broad range of functions in eukaryotes, and as such it has been the subject of interest for several years. The founding member of this family, *Saccharomyces cerevisiae* ScNoc2p, acts in two protein complexes, together with ScNoc1p and ScNoc3p, two proteins containing a CCAAT-binding factor (CBF) domain, and acting for the transport of 60S large ribosomal subunits from the nucleolus to the cytoplasm [2]. Since this first study, other NOC2 proteins have been found to take part in processes other than ribosomal biogenesis. Among these, the human NIR (Novel INHAT Repressor) appears to have an INHAT (inhibitor of histone acetyltransferase) function [10]. NIR is able to bind nucleosomes and unacetylated core histones and is known to interact with the tumor suppressor p53, and to regulate p53-target genes by inhibiting histone acetylation. Interestingly, it has been shown that following nucleolar stress, NIR is re-localized from the nucleolus to the nucleoplasm [11]. Recently, NIR has also been shown to be necessary for asymmetric cell division in mice, suggesting a requirement in this process for correct mitotic spindle orientation [12]. In *Caenorhabditis elegans*, loss of function of the NOC2 homolog causes defects in gonadogenesis [13], whereas in *A. thaliana*, Prunet *et al.* showed that one of the two NOC2 homologs present, REBELOTE (RBL), is involved in floral meristem termination [14].

In this study, we provide insights on the molecular functions of RBL. We show that this protein is localized in the nucleoplasm and nucleolus, where it acts in NOC complexes similar to those found in yeast that involve the yeast RBL homolog Noc2p, together with the other Noc proteins Noc1p and Noc3p. We also show that NOC proteins from mammals are able to form complexes of similar composition to those in yeast and *A. thaliana*. Moreover, yeast 2-hybrid screens allowed us to show interactions of RBL with nucleic acid binding proteins, such as the nucleoplasmic OBE1 and VFP3/ENAP1 proteins, suggesting a role in the regulation of gene expression. In the present work, we have identified the molecular partners of RBL, thus paving the way for further studies to fully elucidate its developmental role.

# Results

## RBL is localized in the nucleolus

Prunet *et al.* showed that RBL was localized in the nucleus [14]. Considering the degree of homology of RBL with yeast Noc2p and human NIR, both of which are localized in the nucleolus despite their involvement in distinct processes in their respective organisms [3,11], we first addressed the sub-nuclear localization of RBL. For this purpose, tobacco leaves were infiltrated simultaneously with plasmids encoding the chimeric protein RBL-GFP, used by Prunet *et al.* (2008), and the nucleolus and Cajal body marker FIBRILLARIN (FIB) fused to mRFP. Microscopic observations show that RBL is localized in the nucleolus and nucleoplasm (Fig. 1). However, the nucleolar signal is the stronger and also appears to be heterogeneous. This signal does not completely co-localize with that of FIB-mRFP, and may be more pronounced at the periphery of the nucleolus (Fig. 1A). Both FIB and RBL are absent from the nucleolar vacuole. The nucleoplasmic signal of RBL is much weaker than its signal in the nucleolus, and appears to be localized to specific bodies. In order to identify these RBL-containing nucleoplasmic bodies, we use FIB-mRFP and RNPS1-mRFP, respectively as markers of Cajal body and splicing speckles [15]. Our results show that RBL-containing bodies are different from Cajal body and splicing speckles (Fig. 1A). The nucleolar localization of RBL was confirmed in *A. thaliana* plants stably transformed with *p35S::RBL-GFP* or *pRBL::RBL-mRFP* constructs. As DNA is more abundant in the nucleoplasm than in the nucleolus, we used Hoechst's reagent as a marker of the nuclear compartments. Our data show that RBL is localized in the nucleolus of root cells in interphase, whereas it co-localized with DNA in dividing root cells (Fig. 1B).

## *A. thaliana* contains homologs of yeast Noc1p, Noc2p and Noc3p

Given that RBL has a NOC2 domain and is localized in the nucleolus, we hypothesized that it might interact in nucleolar complexes similar to those in *S. cerevisiae* containing Noc2p together with either Noc1p or Noc3p. Indeed, BLAST searching of the *A. thaliana* genome shows that it contains four *NOC* genes, including a homolog of *Noc1p*, called *SLOW WALKER 2 (SWA2)* [16], two homologs of *Noc2p*, called *AtNOC2* and *RBL*, and a homolog of *Noc3p*, called *AtNOC3*.

*SWA2* is a nucleolar protein of 1.043 amino acids [16], sharing 23% identity and 41% similarity with *Noc1p*. The protein contains two nuclear localization signals (NLS) at its N- and C-terminus and, as does *Noc1p*, a CBF DNA-binding domain (Fig. 2A). *RBL* and *AtNOC2* are 594 aa and 764 aa in length respectively. As reported by Prunet *et al.* (2008), they share 26% identity and 39% similarity. Both proteins encode a NOC2 domain of unknown function. *AtNOC2* contains two NLS at its C-terminus, whereas *RBL* has a NLS at its N-terminus (Fig. 2A). We also looked for INHAT domains in *RBL*, *AtNOC2* and *Noc2p*, in order to determine whether these domains, present in *HsNIR*, are conserved in other NOC2 proteins. We found homology of the *NIR*

N- and C-terminal INHAT domains respectively with the N-terminus part of AtNOC2 and the C-terminal region of Noc2p. No INHAT domain was found in RBL. The AtNOC3 protein is composed of 830 amino acids, sharing 21% identity and 36% similarity with Noc3p. Both proteins have a CBF domain, a NOC3 domain of unknown function, and a nuclear localization signal (Fig. 2A).

## AtNOC proteins are co-expressed and display similar sub-cellular localizations

Next, we attempted to localize AtNOC2 and AtNOC3 at the sub-cellular level. Observations in infiltrated tobacco leaf cells did not show a complete co-localization of AtNOC2 and AtNOC3 with FIB-mRFP in the nucleolus (Fig. 2B, Fig. S1A). Like RBL, AtNOC3 was not present in the nucleolar vacuole (Fig. 2B), and we currently have no evidence for the presence or absence of AtNOC2 in this sub-nucleolar zone. Both AtNOC proteins are also localized in the nucleoplasm and in nucleoplasmic bodies. The discrete staining patterns of FIB-mRFP and AtNOC2 and AtNOC3 demonstrates that the nucleoplasmic bodies stained by the latter two proteins can not be Cajal bodies (Fig. 2B and Fig S1A, arrowheads). The nucleolar localizations of AtNOC2 and AtNOC3 were confirmed in transgenic *A. thaliana* root cells, in which we used DAPI to stain DNA (Fig. 2C).

Transcriptomic data from the AtGenExpress database show that the four *A. thaliana* NOC genes are co-expressed at similar developmental stages, while data from ATTED II additionally show these genes to be co-regulated under similar stress conditions (Fig. S1B) [17], [18]. Further to the correlation between *SWA2* and *AtNOC2* expression shown by Li *et al.* (2009), we show a correlation between *AtNOC3* and *RBL* expression (Fig. S1C). Moreover, data from ATTED-II indicate that *AtNOCs* are co-expressed with many genes encoding nucleolar proteins, such as OLIGOCELLULA2, TORMOZ and APUM23 (Fig. S1D) [19–21].

## AtNOC proteins form nucleolar complexes

Using yeast 2-hybrid (Y2H) experiments, we evaluated whether the yeast NOC complexes, formed from Noc1p, Noc2p and Noc3p are conserved in *A. thaliana*. Interactions were tested two by two, in both directions, by growth on selective media. These assays indicate that *SWA2* (the *A. thaliana* Noc1p homolog) is able to bind the two NOC2-domain-containing proteins, AtNOC2 and RBL (Fig. 3A). These observations partially confirm the results obtained by Li *et al.* (2009), in which *SWA2* was shown to interact with AtNOC2, but not with RBL. Similarly, we report interactions of AtNOC3 with both AtNOC2 and RBL. This latter interaction was the strongest observed on SD-AHTL high selective media (Fig. 3B). Our results are in accordance with the yeast model, in which Noc2p interacts both with Noc1p and Noc3p. Our results demonstrate the hetero-dimerization of RBL and AtNOC2, and the homo-dimerization of AtNOC2 (Fig. 3A), which is comparable to the situation in yeast in which

the sole homolog of these two *A. thaliana* proteins, Noc2p, is known to homo-dimerize [3]. Both our results and a published study on the homo-dimerization of Noc2p in yeast [3] suggest that NOC complexes may be composed of more than two molecules.

With the exception of the homo-dimerization of AtNOC2 proteins, all interactions found in the Y2H matrix were validated by Bimolecular Fluorescent Complementation (BiFC) (Fig. 3C). Moreover, these BiFC experiments provided evidence of the homo-dimerization of RBL (Fig. 3C). Co-transformation of RBL-GFP with H2B-mRFP or with FIB-mRFP, respectively staining the nucleoplasm or the nucleolus and Cajal bodies, showed that all interactions took place in the nucleolus and in nucleoplasmic bodies surrounding the nucleolus (Fig. 3C). Our results show that AtNOC2 and AtNOC3 are not interacting in Cajal bodies (Fig. 3C, arrowhead). Moreover, our experiments using FIB-mRFP as a nucleolar marker tend to confirm that AtNOCs do not have the same sub-nucleolar localization pattern as FIBRILLARIN (Fig. 3C). Y2H and BiFC results are summarized in Fig. 3D.

## Structural evolution and conservation of NOC complexes in eukaryotes

In addition to the interaction capacities of NOC proteins, we addressed the question of protein function by the use of inter-species complementation tests. *S. cerevisiae* *noc* mutant strains show temperature-conditional lethality [3]. Accordingly, in order to test their degree of functional redundancy, each *A. thaliana* NOC protein was expressed in its respective *noc* mutant homolog strain. No complementation of lethality was observed at 37°C (Fig. S2).

We next addressed the question of the conservation of NOC complexes in mammals, by testing whether NOC proteins from human and mouse are also able to interact *in vitro*. To this end, we used GAL4 fusion proteins containing HsCEBP/Z and HsNIR, the respective Noc1p and Noc2p homologs in humans, and MmFAD24, the Noc3p homolog in mouse, to construct a Y2H interaction matrix. These proteins contain similar domains to their homologs in *S. cerevisiae* and *A. thaliana* (Fig. 4A). We found these mammalian NOC proteins to interact in NOC complexes, as do their yeast and plant homologs. Accordingly, the reciprocal interaction between CEBP/Z and NIR appeared on highly selective SD-AHTL medium (Fig. 4B). On SD-HTL selective medium, CEBP/Z and NIR formed homo-dimers, and NIR interacted with FAD24 (Fig. 4C).

## RBL interacts with OBE1 and VFP3/ENAP1

Given the dual localization of RBL in the nucleolus and the nucleoplasm, we looked for new RBL partners using two independent Y2H screens. Using RBL as bait, more than 1.9 million diploids were plated on high stringency selective medium. Among selected clones, we identified the transcription factors OBE1 (OBERON1) and VFP3/ENAP1 (VirF-interacting Protein 3/EIN2 nuclear associated protein 1) as putative interactors in both screens. cDNAs encoding VFP3/ENAP1 and OBE1 respectively represented 40% and 10% of selected diploids.

Yeast plasmid sequencing showed that multiple variable length transcripts of *OBE1* and *VFP3/ENAP1* had been isolated. Confirmation of interactions involving RBL was performed using the Y2H approach. Negative controls using either an empty prey vector, or a prey vector containing a cDNA partner inactivated by a frame shift mutation, allowed us to confirm the observed interactions of RBL with VFP3/ENAP1 and OBE1 (Fig. 5A).

OBE1 contains a PHD zinc finger domain (IPR001965) known to act in the regulation of chromatin states [22], [23]. OBE1 was characterized as a regulator of apical and root meristem development in the embryo [24], [25]. VFP3/ENAP1 belongs to the trihelix family proteins, which includes ASIL1 and ASIL2 that are involved in seed maturation [26], [27]. It has been recently shown that VFP3/ENAP1 is involved in ethylene response. VFP3/ENAP1 interacts with EIN2, EIN3, SRT1 and SRT2 and regulates change in histone H3 acetylation levels and ethylene-dependant transcription [28–30]. Using a GFP transcriptional fusion protein, we investigated the sub-cellular localization of OBE1 and VFP3/ENAP1. DAPI staining of DNA in transgenic *A. thaliana* root cells showed that OBE1 is a nucleoplasmic protein which is mainly co-localized with heterochromatin, in agreement with the role of OBE1 in chromatin remodelling (Fig. 5B). VFP3/ENAP1 appears distributed in the nucleoplasm and in nucleoplasmic bodies of *A. thaliana* root cells and in transiently transformed tobacco leaf cells (Fig. 5B). Our colocalization experiments with cyc64-mRFP, a marker of splicing speckles [15], showed that VFP3/ENAP1 nucleoplasmic bodies are not splicing speckles (Fig. 5C, arrowheads). Moreover, VFP3/ENAP1 was occasionally found to be present around the nucleolus (Fig. 5B).

Additionally to our search for RBL interactors, Y2H experiments were performed to investigate the importance of the NOC2 domain in protein-protein interactions. To that end, the N-terminal RBL region, containing the NOC2 domain, and its C-terminal region, were used separately as bait in Y2H screens. We found that OBE2, the homolog and partner of OBE1, interacted with the NOC2 domain. No protein was found to interact with the C-terminal region of RBL.



## Discussion :

We report here a functional characterization of RBL, previously reported as being involved in flower meristem determinacy, including its sub-cellular localization and the identification of some of its interaction partners. Stable transformation of *A. thaliana* and transient expression in *N. benthamiana* show that RBL is localized in the nucleolus and nucleoplasm, and can also be observed in unidentified bodies of nucleoplasm (Fig. 1), a pattern similar to the RBL homologs ScNoc2p from yeast and HsNIR from humans [3,11].

### RBL interacts in NOC complexes

Interestingly, the Noc complexes, first characterized in yeast, seem to be conserved in diverse organisms including mammals and plants. We show here that the *A. thaliana* genome encodes four NOC proteins that are localized in the nucleolus and nucleoplasm (Fig. 1 to Fig. 3). We present data showing that AtNOCs are not fully co-localized with FIBRILLARIN, a marker of the nucleolar dense fibrillar component (DFC), in which rDNA transcription and the early stages of rRNA processing take place [31]. We therefore propose that AtNOCs are localized in a specific compartment of the DFC in which they partially colocalize with FIB, and that these proteins are also present in the granular component of the nucleolus, the site enclosing pre-ribosomal particles [31]. We furthermore demonstrate that AtNOCs occur in NOC complexes, similar to those observed in *S. cerevisiae*, also containing Noc1p, Noc2p and Noc3p (Fig.2 and 3) [3]. In accordance with results from yeast, our results show that proteins with NOC2-domain are able to form homo-dimers, and that RBL and AtNOC2 are able to interact together. These data are in partial agreement with published yeast-2-hybrid results that showed that SWA2 interacts with AtNOC2, but not with RBL [16]. This difference suggests that the interaction of SWA2 with RBL may be highly sensitive to the expression levels of these proteins in the yeast 2-hybrid experimental system, as Li *et al.* [16] used high copy plasmids, whereas we used low copy plasmids. Our results also suggest that the NOC2 domain is necessary for interactions involving RBL and AtNOC2. The capacity of NOC proteins to dimerize suggests a molecular and functional diversity of NOC complexes. Such a view is supported by evidence of the co-expression of SWA2 with AtNOC2, and of AtNOC3 with RBL (Fig. S1B). However, AtNOCs have similar nucleolar and nucleoplasmic localization patterns, and are co-expressed with other nucleolar proteins, such as OLIGOCELLULA2 and TORMOZ (Fig. S1C), which are homologous to yeast proteins involved in ribosomal biogenesis [19], [21]. We therefore hypothesize that *A. thaliana* NOC complexes probably fulfil similar functions to their yeast homologs during the biogenesis of 60S ribosomal subunits [3]. A role for RBL in this essential process could explain the embryo-lethal phenotype observed in *rb1-3* mutants [14]. Furthermore, if RBL is needed for ribosomal subunit biogenesis, the floral meristem determinacy phenotype observed in mutants containing the weak *rb1-1* allele could be due to a cell homeostasis defect. In addition to the conservation of AtNOC complexes,

our results on mammalian NOC interactions (Fig. 4) and complementation tests of yeast mutants by AtNOCs (Fig. S2) suggest the structural co-evolution of NOC proteins, which have conserved their ability to interact within their native organisms.

## RBL acts with DNA-binding proteins

In addition of its nucleolar localization, RBL also displays a nucleoplasmic localization pattern. To gain insight in the role of RBL in the nucleus, we searched for new RBL interactors. Interactions with SWA2, AtNOC3, OBE1 and VFP3/ENAP1, that all contain DNA-binding domains, suggest that RBL acts to regulate gene expression. A role in gene expression has already been observed for the human homolog of RBL. Through its two INHAT domains, NIR binds to histone tails and inhibits their acetylation by the CBP/p300 acetylation complex, preventing the expression of target genes [10]. Our results, showing that AtNOC2 and ScNoc2p share homology with the NIR INHAT domain, suggest that the inhibition of histone acetyltransferase activity by NOC2 proteins might be conserved between major groups of eukaryotes. Despite the absence of an INHAT domain in RBL, we hypothesize that the protein can contribute to the regulation of chromatin structure *via* its protein partners. Recent publications show that VFP3/ENAP1 acts in histone H3 acetylation [28–30], and we might therefore hypothesize that, *via* its binding with VFP3/ENAP1, RBL interferes with histone H3 acetylation. Indeed, RBL localization at nucleoplasmic dots could be linked to the regulation of post-translational histones modifications. Similarly, RBL could act on chromatin remodelling *via* its partners OBE1 and OBE2 proteins, which contain PHD zinc fingers domain reported to act in this regulatory process [22]. The chromatin-related function of the OBE1/OBE2 complex is supported by the localization in present work of OBE1 at DNA-condensed loci and by our Y2H experiments showing the interaction of OBE1 with MOM1 (Fig. S3), a plant-specific major regulator of heterochromatin loci [32]. The interaction of RBL with OBE1 and OBE2 could provide clues on the floral meristem phenotype observed in *rb1* [14]. OBE1 and OBE2 have indeed been shown to regulate embryo meristem initiation and apical meristem maintenance [24], [25], [33]. From these and previous studies, we can hypothesize that the OBE1/OBE2 complex also promotes floral meristem maintenance, and that RBL binds to the OBE1/OBE2 complex to inhibit this activity, thereby leading to floral meristem termination. As OBE1 and OBE2 are redundant, it has been necessary to study the functions of these genes in double mutants context [24], [25]. However, the embryo lethality of the *obe1 obe2* double mutant did not allow us to study the role of OBE1/OBE2 in floral termination. To shed light on the role of the RBL/OBE1/OBE2 complex in floral termination process, further studies should be focused on inducible RNAi or CRISPR technology to target both OBE paralogs *in planta*.

Though RBL, OBE1 and VFP3/ENAP1 are shown in the current work to possess distinct localization patterns. The capacity of RBL to interact with these two other proteins may be explained by a possible dynamic protein re-localization between the nucleolus and the nucleoplasm. This phenomenon has been clearly documented for numerous other nuclear proteins [11], [15], [34]. Furthermore, NIR, the human homolog of RBL, is known to re-localize to the nucleoplasm after nucleolar stress [11]. It should also be mentioned that the homolog of VFP3/ENAP1 in tobacco, NtSIP1, which is also localized in the nucleoplasm, has been shown to interact with the nucleolar protein NtSIP2 [35]. Such a re-localization may be a response to pathogens and/or environmental stimuli. Similarly, we know that RBL's partners OBE1 and OBE2 act in responses to virus infection through interactions with potyvirus VPg protein [36], and that VFP3/ENAP1 acts in ethylene responses, in addition to its interaction with the VirF oncoprotein of *Agrobacterium tumefaciens*, responsible for crown gall tumors [28–30,37,38].

## Conclusion

Our study demonstrates that RBL is both a member of NOC complexes and a cofactor interacting with DNA-binding protein. We suggest that RBL is involved, by participating in different protein complexes, in multiple cellular processes, from ribosomal biogenesis to the regulation of gene expression, and thus joins a growing list of nucleolar proteins that control specific developmental processes, such as floral meristem termination [7,8]. Our work also raises the question of the role of nucleolar proteins on floral meristem termination. Interestingly, the *A. thaliana* nucleolar protein NUCLEOSTEMIN-like 1, which is involved in ribosomal biogenesis, also controls floral meristem termination [39], [40]. Its yeast homolog, Nug1p, interacts with Noc2p to export 60S ribosomal subunit from the nucleus [41–43]. Accordingly, our work lays the foundations of future studies on the functions of NOC2 proteins, and on the relationship between the nucleolus and developmental processes in plants.

## Materials and Methods

### Localization and Bimolecular Fluorescent Complementation (BiFC)

We used the previously described construction *p35S::RBL-GFP* for RBL localization [14]. Other cDNAs used for localization experiments were cloned in-frame with a GFP reporter gene in Gateway pK7FWG2 and pK7WGF2 vectors (Ghent Gateway Vectors). Localization observations were made either on transiently transformed *N. benthamiana* leaves or on roots of *A. thaliana*, stably transformed by the floral dip method. For BiFC, full-length cDNAs of *RBL* and its interactors were cloned in the pBiFP1-4 Gateway vectors developed by F. Parcy (CEA, Grenoble, France). Infiltrations were performed on three-week old *N. benthamiana* leaves as previously described [44]. Observations were made immediately after infiltration.

## Complementation of yeast *noc* mutants

Yeast *noc1-1*, *noc2-1* and *noc3-1* mutants and vectors expressing *ScNoc* were provided by H. Tchoschner [3]. *A. thaliana* cDNAs were cloned in the YEplac195 Gateway expression vector, also provided by H. Tchoschner. Thermo-sensitivity complementation was tested using non-diluted and diluted yeast colonies cultured at 37°C on SD-U medium.

## Yeast 2-hybrid experiments

A cDNA library of etiolated *A. thaliana* seedlings (Stock CD4-22: <https://www.arabidopsis.org/servlets/TairObject?type=stock&id=88570>) was initially screened using full-length *RBL* cloned in pAS2.1 (Clontech). The cDNA library was cloned in the pADGAL4-2.1 vector [45]. Y2H experiments were performed by mating, using *S. cerevisiae* AH109 and Y187 strains and selection on triple (-Leu, -Trp, -His) or quadruple (-Ade) selective media [41]. Computer-based sequence analysis to identify putative interactors was performed using VectorNTI (Informax) and Sequencher (Gene Codes Corporation) software.

The interaction of *RBL* with *OBE1* and *VFP3* were confirmed by mating between AH109 (carrying pADGAL4-2.1 and full-length cDNAs of interactors, or cDNAs containing frame-shift mutations caused by deletions) and Y187 (carrying the empty pAS2.1, or pAS2.1 and *RBL* cDNA) [46].

For direct Y2H experiments using *A. thaliana* proteins, full-length cDNA were cloned into the pPC86- and pPC97-based vectors. *NIR* was amplified from a human cDNA library obtained from the LBMC laboratory (ENS, Lyon). *CEBPZ* was amplified from the *pMT2-CBF* construct [47], while the *FAD24* cDNA was amplified from the *pGFP-c1-mouseFAD24* plasmid [48], provided by Pr. Masayoshi Imagawa (Nagoya City University). For Y2H experiments using mammalian proteins, cDNAs have previously been cloned in the pENTRY vector pDONRzeo, and then transferred by recombination to the in pGBKT7-GW and pACT2-GW destination vectors (developed by Annie Chaboud, ENS, Lyon).

## Microscopy

Imaging in sub-cellular localizations and in BiFC experiments was performed using Zeiss LSM-510, Zeiss LSM-700 or Leica SP5 confocal microscopes. A histone H2B-mRFP marker was kindly provided by Frederic Berger [49], while FIB-mRFP, cyc64-mRFP and RNPS1-mRFP were kindly provided by P. Shaw [15].

## Bio-informatic prediction

We used online tools to study co-expression of AtNOC proteins, and predict the presence of nuclear localization signal or specific protein domain. We respectively used ATTED-II [17] and AtGenExpressed [18] for expression analysis, NLS-mapper [50] for NLS prediction, and INTERPRO [51] for protein domain prediction.

## Accession numbers

RBL (At3g55510), SWA2 (At1g72440), AtNOC2 (At2g18220), AtNOC3 (At1g79150), OBE1 (At3g07780), VFP3/ENAP1 (At3g11100)

## Acknowledgements

We thank Olivier Hamant, Matthieu Bourdon and Charlie Scutt for their constructive remarks on our work and the manuscript. We are grateful to all the researchers who provided biological material used in this work. We also thank Claire Lionnet and Christophe Chamot (PlaTIM, SFR BioSciences Lyon-Gerland) for their help with confocal microscopy. SdB has been funded by a grant of Région Rhône-Alpes.

## Conflicts of Interest

The authors have no conflicts of interest to declare.

## Author Contributions

SdB, PM, CT and IN conceived and designed the project; SdB and PM acquired the data; SdB, PM, CT and IN analyzed and interpreted the data; SdB, PM, CT and IN wrote the paper.

## References

1. Henras AK, Soudet J, G erus M, Lebaron S, Caizergues-Ferrer M, Moug in A, Henry Y (2008) The post-transcriptional steps of eukaryotic ribosome biogenesis. *Cell Mol Life Sci CMLS* **65**: 2334–2359.
2. Shaw P, Brown J (2012) Nucleoli: Composition, Function, and Dynamics. *Plant Physiol* **158**: 44–51.
3. Milkereit P, Gadal O, Podtelejnikov A, Trumtel S, Gas N, Petfalski E, Tollervey D, Mann M, Hurt E, Tschochner H (2001) Maturation and intranuclear transport of pre-ribosomes requires Noc proteins. *Cell* **105**: 499–509.
4. Andersen JS, Lyon CE, Fox AH, Leung AKL, Lam YW, Steen H, Mann M, Lamond AI (2002) Directed proteomic analysis of the human nucleolus. *Curr Biol CB* **12**: 1–11.
5. Scherl A, Cout e Y, D eon C, Call e A, Kindbeiter K, Sanchez J-C, Greco A, Hochstrasser D, Diaz J-J (2002) Functional proteomic analysis of human nucleolus. *Mol Biol Cell* **13**: 4100–4109.
6. Pendle AF, Clark GP, Boon R, Lewandowska D, Lam YW, Andersen J, Mann M, Lamond AI, Brown JWS, Shaw PJ (2005) Proteomic analysis of the Arabidopsis nucleolus suggests novel nucleolar functions. *Mol Biol Cell* **16**: 260–269.
7. Byrne ME (2009) A role for the ribosome in development. *Trends Plant Sci* **14**: 512–519.
8. de Bossoreille de Ribou S, Douam F, Hamant O, Frohlich MW, Negrutiu I (2013) Plant science and agricultural productivity: why are we hitting the yield ceiling? *Plant Sci Int J Exp Plant Biol* **210**: 159–176.
9. Nishimura T, Wada T, Yamamoto KT, Okada K (2005) The Arabidopsis STV1 protein, responsible for translation reinitiation, is required for auxin-mediated gynoecium patterning. *Plant Cell* **17**: 2940–2953.
10. Hublitz P, Kunowska N, Mayer UP, M uller JM, Heyne K, Yin N, Fritzsche C, Poli C, Miguet L, Schupp IW, et al. (2005) NIR is a novel INHAT repressor that modulates the transcriptional activity of p53. *Genes Dev* **19**: 2912–2924.
11. Heyne K, Willnecker V, Schneider J, Conrad M, Raulf N, Sch ule R, Roemer K (2010) NIR, an inhibitor of histone acetyltransferases, regulates transcription factor TAp63 and is controlled by the cell cycle. *Nucleic Acids Res* **38**: 3159–3171.
12. Duteil D, Tourrette Y, Eberlin A, Willmann D, Patel D, Friedrichs N, M uller JM, Sch ule R (2018) The histone acetyltransferase inhibitor Nir regulates epidermis development. *Dev Camb Engl* **145**:
13. Voutev R, Killian DJ, Ahn JH, Hubbard EJA (2006) Alterations in ribosome biogenesis cause specific defects in C-elegans hermaphrodite gonadogenesis. *Dev Biol* **298**: 45–58.
14. Prunet N, Morel P, Thierry A-M, Eshed Y, Bowman JL, Negrutiu I, Trehin C (2008) REBELOTE, SQUINT, and ULTRAPETALA1 function redundantly in the temporal regulation of floral meristem termination in Arabidopsis thaliana. *Plant Cell* **20**: 901–919.
15. Koroleva OA, Calder G, Pendle AF, Kim SH, Lewandowska D, Simpson CG, Jones IM, Brown JWS, Shaw PJ (2009) Dynamic behavior of Arabidopsis eIF4A-III, putative core protein of exon junction complex: fast relocation to nucleolus and splicing speckles under hypoxia. *Plant Cell* **21**: 1592–1606.
16. Li N, Yuan L, Liu N, Shi D, Li X, Tang Z, Liu J, Sundaresan V, Yang W-C (2009) SLOW WALKER2, a NOC1/MAK21 homologue, is essential for coordinated cell cycle progression during female gametophyte development in Arabidopsis. *Plant Physiol* **151**: 1486–1497.
17. Obayashi T, Okamura Y, Ito S, Tadaka S, Aoki Y, Shirota M, Kinoshita K (2014) ATTED-II in 2014: evaluation of gene coexpression in agriculturally important plants. *Plant Cell Physiol* **55**: e6.
18. Schmid M, Davison TS, Henz SR, Pape UJ, Demar M, Vingron M, Sch olkopf B, Weigel D, Lohmann JU (2005) A gene expression map of Arabidopsis thaliana development. *Nat Genet* **37**: 501–506.

19. Fujikura U, Horiguchi G, Ponce MR, Micol JL, Tsukaya H (2009) Coordination of cell proliferation and cell expansion mediated by ribosome-related processes in the leaves of *Arabidopsis thaliana*. *Plant J Cell Mol Biol* **59**: 499–508.
20. Abbasi N, Kim HB, Park N-I, Kim H-S, Kim Y-K, Park Y-I, Choi S-B (2010) APUM23, a nucleolar Puf domain protein, is involved in pre-ribosomal RNA processing and normal growth patterning in *Arabidopsis*. *Plant J Cell Mol Biol* **64**: 960–976.
21. Griffith ME, Mayer U, Capron A, Ngo QA, Surendrarao A, McClinton R, Jürgens G, Sundaresan V (2007) The *TORMOZ* gene encodes a nucleolar protein required for regulated division planes and embryo development in *Arabidopsis*. *Plant Cell* **19**: 2246–2263.
22. López-González L, Mouriz A, Narro-Diego L, Bustos R, Martínez-Zapater JM, Jarillo JA, Piñeiro M (2014) Chromatin-dependent repression of the *Arabidopsis* floral integrator genes involves plant specific PHD-containing proteins. *Plant Cell* **26**: 3922–3938.
23. Mitchell A, Chang H-Y, Daugherty L, Fraser M, Hunter S, Lopez R, McAnulla C, McMenamin C, Nuka G, Pesseat S, et al. (2015) The InterPro protein families database: the classification resource after 15 years. *Nucleic Acids Res* **43**: D213–221.
24. Saiga S, Furumizu C, Yokoyama R, Kurata T, Sato S, Kato T, Tabata S, Suzuki M, Komeda Y (2008) The *Arabidopsis* *OBERON1* and *OBERON2* genes encode plant homeodomain finger proteins and are required for apical meristem maintenance. *Dev Camb Engl* **135**: 1751–1759.
25. Thomas CL, Schmidt D, Bayer EM, Dreos R, Maule AJ (2009) *Arabidopsis* plant homeodomain finger proteins operate downstream of auxin accumulation in specifying the vasculature and primary root meristem. *Plant J Cell Mol Biol* **59**: 426–436.
26. Gao M-J, Lydiate DJ, Li X, Lui H, Gjetvaj B, Hegedus DD, Rozwadowski K (2009) Repression of seed maturation genes by a trihelix transcriptional repressor in *Arabidopsis* seedlings. *Plant Cell* **21**: 54–71.
27. Willmann MR, Mehalick AJ, Packer RL, Jenik PD (2011) MicroRNAs regulate the timing of embryo maturation in *Arabidopsis*. *Plant Physiol* **155**: 1871–1884.
28. Zhang F, Wang L, Qi B, Zhao B, Ko EE, Riggan ND, Chin K, Qiao H (2017) EIN2 mediates direct regulation of histone acetylation in the ethylene response. *Proc Natl Acad Sci U S A* **114**: 10274–10279.
29. Zhang F, Qi B, Wang L, Zhao B, Rode S, Riggan ND, Ecker JR, Qiao H (2016) EIN2-dependent regulation of acetylation of histone H3K14 and non-canonical histone H3K23 in ethylene signalling. *Nat Commun* **7**.
30. Zhang F, Wang L, Ko EE, Shao K, Qiao H (2018) Histone Deacetylases SRT1 and SRT2 Interact with ENAP1 to Mediate Ethylene-Induced Transcriptional Repression[OPEN]. *Plant Cell* **30**: 153–166.
31. Brown JWS, Shaw PJ (1998) Small Nucleolar RNAs and Pre-rRNA Processing in Plants. *Plant Cell* **10**: 649–657.
32. Vaillant I, Schubert I, Tourmente S, Mathieu O (2006) MOM1 mediates DNA-methylation-independent silencing of repetitive sequences in *Arabidopsis*. *EMBO Rep* **7**: 1273–1278.
33. Saiga S, Möller B, Watanabe-Taneda A, Abe M, Weijers D, Komeda Y (2012) Control of embryonic meristem initiation in *Arabidopsis* by PHD-finger protein complexes. *Dev Camb Engl* **139**: 1391–1398.
34. Wang L-C, Wu J-R, Hsu Y-J, Wu S-J (2015) *Arabidopsis* HIT4, a regulator involved in heat-triggered reorganization of chromatin and release of transcriptional gene silencing, relocates from chromocenters to the nucleolus in response to heat stress. *New Phytol* **205**: 544–554.
35. Kitakura S, Terakura S, Yoshioka Y, Machida C, Machida Y (2008) Interaction between *Agrobacterium tumefaciens* oncoprotein 6b and a tobacco nucleolar protein that is homologous to TNP1 encoded by a transposable element of *Antirrhinum majus*. *J Plant Res* **121**: 425–433.

36. Dunoyer P, Thomas C, Harrison S, Revers F, Maule A (2004) A cysteine-rich plant protein potentiates Potyvirus movement through an interaction with the virus genome-linked protein VPg. *J Virol* **78**: 2301–2309.
37. Kitakura S, Fujita T, Ueno Y, Terakura S, Wabiko H, Machida Y (2002) The protein encoded by oncogene 6b from *Agrobacterium tumefaciens* interacts with a nuclear protein of tobacco. *Plant Cell* **14**: 451–463.
38. García-Cano E, Magori S, Sun Q, Ding Z, Lazarowitz SG, Citovsky V (2015) Interaction of Arabidopsis Trihelix-Domain Transcription Factors VFP3 and VFP5 with *Agrobacterium* Virulence Protein VirF. *PLoS ONE* **10**.
39. Jeon Y, Park Y-J, Cho HK, Jung HJ, Ahn T-K, Kang H, Pai H-S (2015) The nucleolar GTPase nucleostemin-like 1 plays a role in plant growth and senescence by modulating ribosome biogenesis. *J Exp Bot* **66**: 6297–6310.
40. Wang X, Gingrich DK, Deng Y, Hong Z (2012) A nucleostemin-like GTPase required for normal apical and floral meristem development in Arabidopsis. *Mol Biol Cell* **23**: 1446–1456.
41. Bassler J, Grandi P, Gadai O, Lessmann T, Petfalski E, Tollervey D, Lechner J, Hurt E (2001) Identification of a 60S preribosomal particle that is closely linked to nuclear export. *Mol Cell* **8**: 517–529.
42. Bassler J, Kallas M, Hurt E (2006) The NUG1 GTPase reveals an N-terminal RNA-binding domain that is essential for association with 60 S pre-ribosomal particles. *J Biol Chem* **281**: 24737–24744.
43. Nissan TA, Bassler J, Petfalski E, Tollervey D, Hurt E (2002) 60S pre-ribosome formation viewed from assembly in the nucleolus until export to the cytoplasm. *EMBO J* **21**: 5539–5547.
44. Depege-Fargeix N, Javelle M, Chambrier P, Frangne N, Gerentes D, Perez P, Rogowsky PM, Vernoud V (2011) Functional characterization of the HD-ZIP IV transcription factor OCL1 from maize. *J Exp Bot* **62**: 293–305.
45. Fan HY, Hu Y, Tudor M, Ma H (1997) Specific interactions between the K domains of AG and AGLs, members of the MADS domain family of DNA binding proteins. *Plant J* **12**: 999–1010.
46. Walhout AJM, Vidal M (2001) High-throughput yeast two-hybrid assays for large-scale protein interaction mapping. *Methods* **24**: 297–306.
47. Lum LS, Sultzman LA, Kaufman RJ, Linzer DI, Wu BJ (1990) A cloned human CCAAT-box-binding factor stimulates transcription from the human hsp70 promoter. *Mol Cell Biol* **10**: 6709–6717.
48. Tominaga K, Johmura Y, Nishizuka M, Imagawa M (2004) Fad24, a mammalian homolog of Noc3p, is a positive regulator in adipocyte differentiation. *J Cell Sci* **117**: 6217–6226.
49. Ingouff M, Rademacher S, Holec S, Šoljić L, Xin N, Readshaw A, Foo SH, Lahouze B, Sprunck S, Berger F (2010) Zygotic Resetting of the HISTONE 3 Variant Repertoire Participates in Epigenetic Reprogramming in Arabidopsis. *Curr Biol* **20**: 2137–2143.
50. Kosugi S, Hasebe M, Tomita M, Yanagawa H (2009) Systematic identification of cell cycle-dependent yeast nucleocytoplasmic shuttling proteins by prediction of composite motifs. *Proc Natl Acad Sci U S A* **106**: 10171–10176.
51. Finn RD, Attwood TK, Babbitt PC, Bateman A, Bork P, Bridge AJ, Chang H-Y, Dosztányi Z, El-Gebali S, Fraser M, et al. (2017) InterPro in 2017-beyond protein family and domain annotations. *Nucleic Acids Res* **45**: D190–D199.



## Captions

Fig. 1. Sub-cellular localization of REBELOTE

(A) Transient expression of *p35S::RBL-GFP*, with *p35S::FIB-mRFP* or *p35S::RNPS1-mRFP* constructs in epidermal cells of tobacco leaves. *p35S::FIB-mRFP* stains nucleolus and Cajal bodies whereas *p35S::RNPS1-mRFP* stains splicing speckles. Arrowheads show the Cajal body stained by FIB-mRFP chimeric proteins. Arrows show the nucleolar vacuole. (B) Stable transformation of *p35S::RBL-GFP* construct in *Arabidopsis thaliana*. DNA is stained with Hoechst. RBL co-localizes with DNA during interphase (Arrowheads). Scale bar = 10  $\mu\text{m}$ .

Fig. 2. Structure and nucleolar localization of *Arabidopsis thaliana* NOC proteins

(A) Structure of NOC proteins from *S. cerevisiae* and *A. thaliana*. (B-C) Transient and stable expression of *p35S::GFP-AtNOC2* and *p35S::AtNOC3-GFP* constructs in *N. benthamiana* (B) and *A. thaliana* (C). Arrowhead shows the Cajal body stained by FIB-mRFP chimeric proteins, whereas arrows show the nucleolar vacuoles. Observations were performed on tobacco epidermal cells transiently expressing FIB-mRFP chimeric proteins used as nucleolus and Cajal bodies markers, and on *A. thaliana* root-tip cells stained with DAPI. Scale bar: 10  $\mu\text{m}$ .

Fig. 3. The four *A. thaliana* NOC proteins interact in nucleolar complexes.

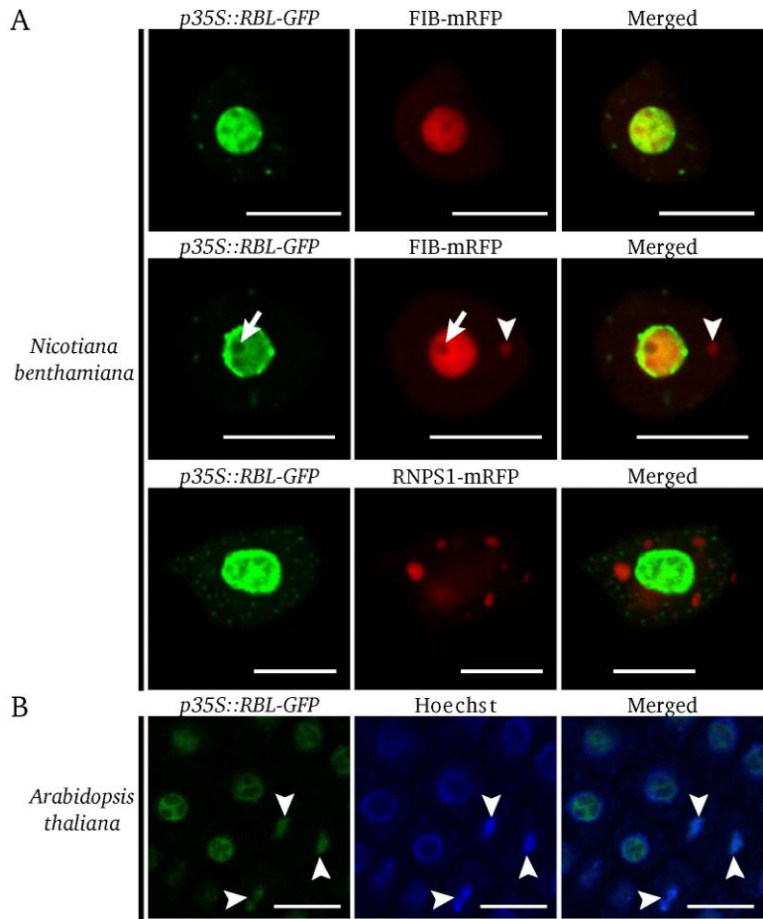
(A) Yeast 2-hybrid interaction matrix on SD-HTL (10<sup>-3</sup> dilution) selective media. (B) Yeast 2-hybrid interaction matrix on SD-AHTL (10<sup>-3</sup> dilution) selective media. (C) BiFC experiments using transient co-expression of the nucleoplasmic marker H2B-mRFP and two *A. thaliana* NOC proteins fused to N-term or C-term regions of the YFP fluorescent protein. Arrowhead show the Cajal body stained by FIB-mRFP chimeric proteins. Experiments and observations were performed on epidermal cells of *N. benthamiana* leaves. Scale bar: 10  $\mu\text{m}$ . (D) Recapitulative scheme of *A. thaliana* NOC interactions. Yeast 2-hybrid results are in green, BiFC results are in red.

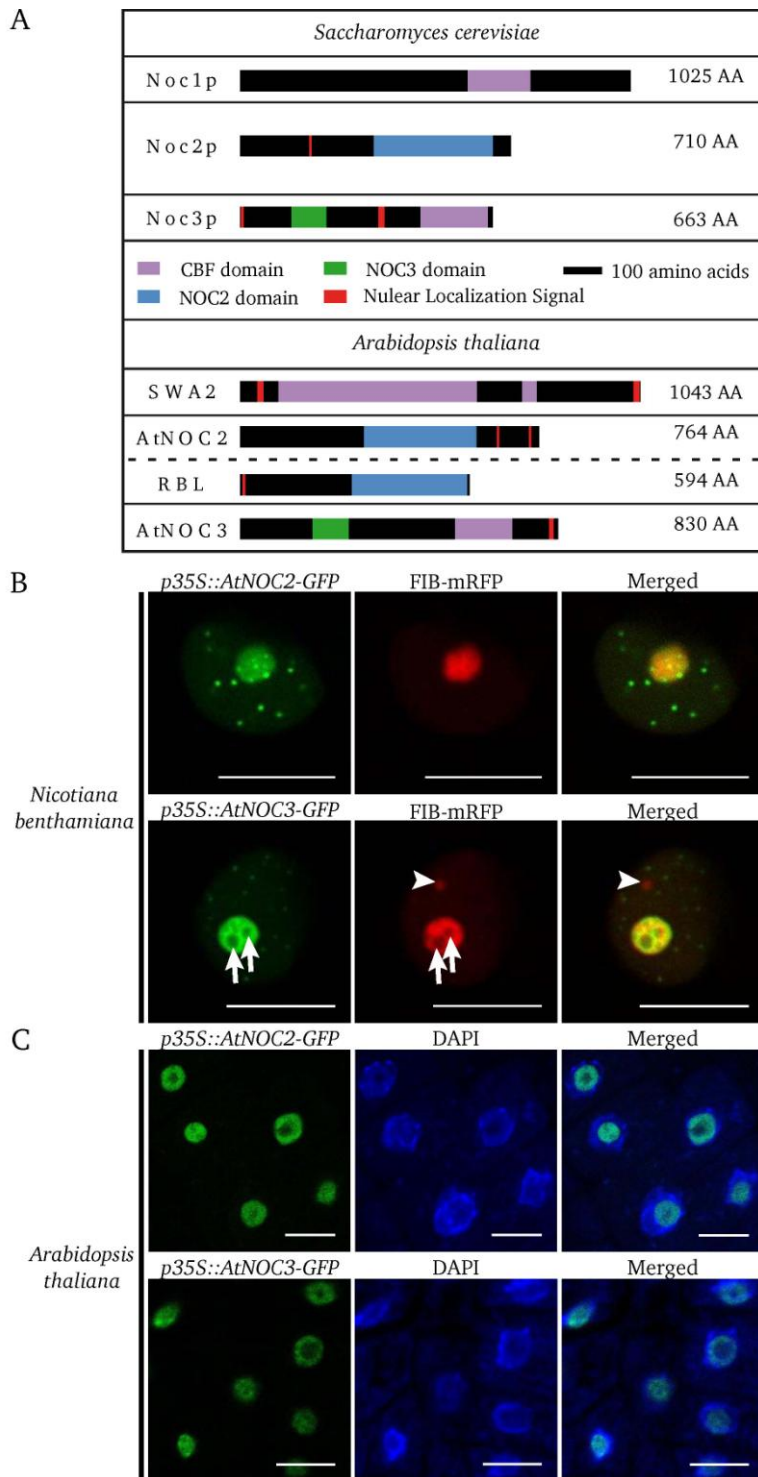
Fig. 4. Mammalian NOC proteins and complexes.

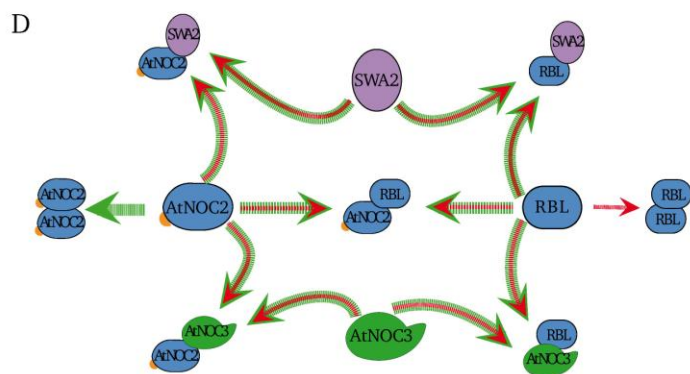
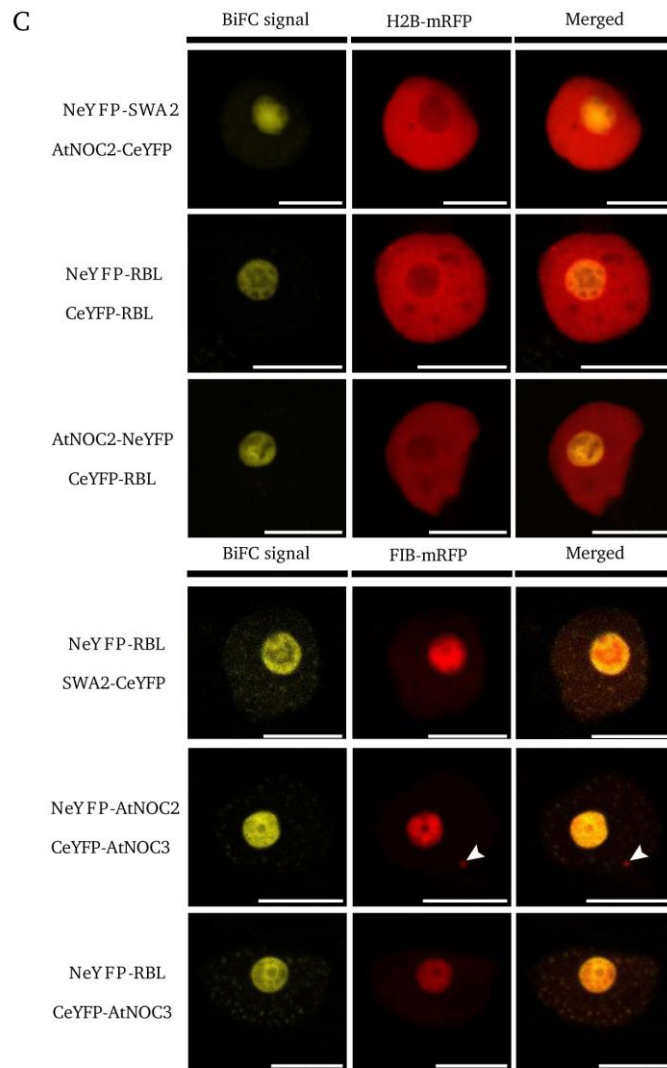
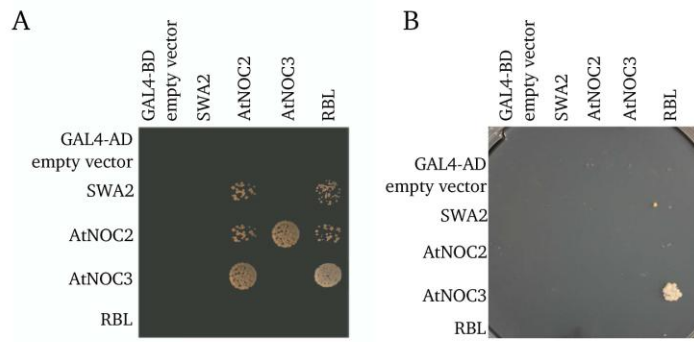
(A) Schematic representation of HsCEBP/Z, HsNIR and MmFAD24, which are the respective *S. cerevisiae* homologues of Noc1p, Noc2p and Noc3p. (B) Yeast 2-hybrid interaction matrix on SD-AHTL ( $10^{-3}$  dilution) selective media. (C) Yeast 2-hybrid interaction matrix on SD-HTL selective media ( $10^{-3}$  dilution).

Fig. 5. Confirmation of RBL interactors and sub-cellular localization of interactors

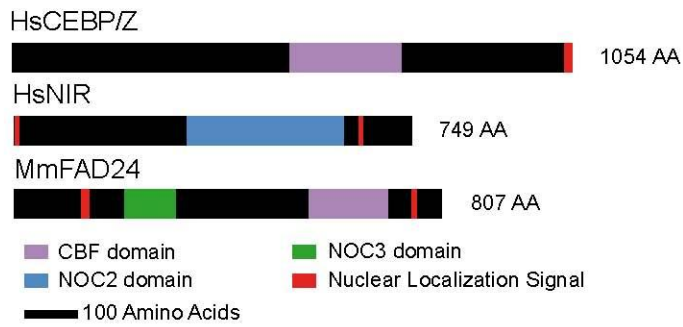
(A) Direct yeast 2-hybrid experiments confirming interactions of RBL with VFP3/ENAP1 and OBE1. Negative controls included tests with empty vectors (pAS2-1) and with a cDNA in which a nucleotide had been deleted, inducing a frame-shift mutation (VFP3/ENAP1del, OBE1del). Yeasts were grown on SD-AHTL selective media. (B) Localizations of the chimeric proteins OBE1-GFP and VFP3/ENAP1-GFP in *A. thaliana* root cells. DNA is stained with DAPI. (C) Localization of VFP3/ENAP1-GFP in tobacco leaf cells. The splicing speckles are stained with cyc64-mRFP marker. Scale bar: 10  $\mu$ m.



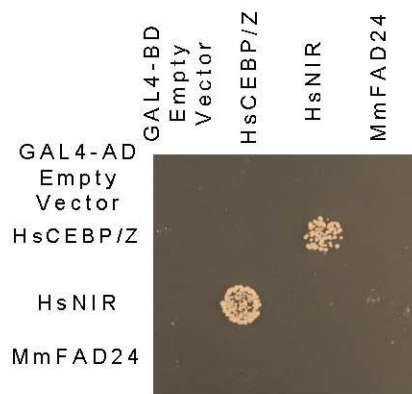




A



B



C

