



HAL
open science

Modulation of enterohaemorrhagic escherichia coli survival and virulence in the human gastrointestinal tract

Grégory Jubelin, Mickaël Desvaux, Stephanie Schüller, Lucie Etienne-Mesmin, Maite Muniesa, Stéphanie Blanquet Diot

► **To cite this version:**

Grégory Jubelin, Mickaël Desvaux, Stephanie Schüller, Lucie Etienne-Mesmin, Maite Muniesa, et al.. Modulation of enterohaemorrhagic escherichia coli survival and virulence in the human gastrointestinal tract. *Microorganisms*, 2018, 6 (4), pp.115. 10.3390/microorganisms6040115 . hal-02621247

HAL Id: hal-02621247

<https://hal.inrae.fr/hal-02621247>

Submitted on 26 May 2020

HAL is a multi-disciplinary open access archive for the deposit and dissemination of scientific research documents, whether they are published or not. The documents may come from teaching and research institutions in France or abroad, or from public or private research centers.

L'archive ouverte pluridisciplinaire **HAL**, est destinée au dépôt et à la diffusion de documents scientifiques de niveau recherche, publiés ou non, émanant des établissements d'enseignement et de recherche français ou étrangers, des laboratoires publics ou privés.



Distributed under a Creative Commons Attribution 4.0 International License



Review

Modulation of Enterohaemorrhagic *Escherichia coli* Survival and Virulence in the Human Gastrointestinal Tract

Grégory Jubelin ¹, Mickaël Desvaux ¹, Stephanie Schüller ^{2,3}, Lucie Etienne-Mesmin ¹, Maite Muniesa ⁴ and Stéphanie Blanquet-Diot ^{1,*}

¹ UMR454 MEDIS, Université Clermont Auvergne/INRA, 63000 Clermont-Ferrand, France; gregory.jubelin@inra.fr (G.J.); mickael.desvaux@inra.fr (M.D.); lucie.etienne-mesmin@uca.fr (L.E.-M.)

² Norwich Medical School, University of East Anglia, Norwich NR4 7TJ, UK; s.schuller@uea.ac.uk

³ Gut Health and Food Safety Programme, Quadram Institute Bioscience, Norwich NR4 7UA, UK

⁴ Department of Genetics, Microbiology and Statistics, Microbiology Section, Faculty of Biology, University of Barcelona, 08029 Barcelona, Spain; mmuniesa@ub.edu

* Correspondence: stephanie.blanquet@uca.fr; Tel.: +33-473-17-83-90

Received: 3 October 2018; Accepted: 18 November 2018; Published: 19 November 2018



Abstract: Enterohaemorrhagic *Escherichia coli* (EHEC) is a major foodborne pathogen responsible for human diseases ranging from diarrhoea to life-threatening complications. Survival of the pathogen and modulation of virulence gene expression along the human gastrointestinal tract (GIT) are key features in bacterial pathogenesis, but remain poorly described, due to a paucity of relevant model systems. This review will provide an overview of the in vitro and in vivo studies investigating the effect of abiotic (e.g., gastric acid, bile, low oxygen concentration or fluid shear) and biotic (e.g., gut microbiota, short chain fatty acids or host hormones) parameters of the human gut on EHEC survival and/or virulence (especially in relation with motility, adhesion and toxin production). Despite their relevance, these studies display important limitations considering the complexity of the human digestive environment. These include the evaluation of only one single digestive parameter at a time, lack of dynamic flux and compartmentalization, and the absence of a complex human gut microbiota. In a last part of the review, we will discuss how dynamic multi-compartmental in vitro models of the human gut represent a novel platform for elucidating spatial and temporal modulation of EHEC survival and virulence along the GIT, and provide new insights into EHEC pathogenesis.

Keywords: EHEC; virulence factors; in vitro GI models

1. Introduction

Enterohaemorrhagic *Escherichia coli* (EHEC) is an important cause of human gastrointestinal (GI) disease in developed countries [1]. Ruminants, especially cattle, are a natural reservoir of the pathogen, and food such as undercooked beef products, unpasteurized milk, and vegetables, as well as contaminated water, are the principal sources of human infection. EHEC causes diarrhoea, haemorrhagic colitis, and systemic haemolytic uraemic syndrome (HUS) in 10% of cases. HUS is the leading cause of acute renal failure in children, and up to 5% of patients die from HUS [2]. The severity of HUS combined with the very low infectious dose (around 50–100 bacteria) makes EHEC a very serious pathogen. EHEC contains over 400 serotypes, but O157:H7 is most often associated with outbreaks worldwide and severe diseases [3].

Survival and virulence of EHEC strains in the human gastrointestinal tract (GIT) are key factors in the infectious process. Once ingested, the pathogen must breach the acidic barrier of the human stomach to reach its main colonization site, the terminal ileum and colon [4–6]. EHEC colonization involves the

formation of attaching and effacing (A/E) lesions on intestinal epithelium, which are characterized by loss of microvilli and intimate attachment to the host cell membrane [7]. Genes encoding A/E lesion formation are localized on a pathogenicity island, the locus for enterocyte effacement (LEE), which encodes a bacterial type III secretion system (T3SS). Colonization is mainly mediated by the primary adhesin intimin but other putative adherence factors have been described, such as long polar fimbriae (Lpf) [8]. In addition, mucin-degrading enzymes such as the secreted zinc metalloprotease StcE promote penetration of the mucus layer and bacterial adhesion [9]. After establishment of colonization, Shiga toxins (Stx), the main virulence factors of EHEC responsible for HUS, are released and cross the epithelial barrier to reach their target organs, the kidneys and the brain [10]. Stx are encoded in the genomes of lambdoid bacteriophages and consist of five B subunits binding to globotriaosylceramide-3(Gb3) receptors on the surface of endothelial target cells and one catalytic A subunit targeting eukaryotic ribosomes and inhibiting protein synthesis [11]. Stx production is directly dependent on phage induction, which is induced by activation of the bacterial SOS response by DNA damaging agents, such as antibiotics [12]. The Stx family has two main groups: Stx1 and Stx2. Stx2 is only produced when the phage enters the lytic cycle, while Stx1 is regulated by phage cycle and an iron-regulated promoter [13]. Hence, Fur, a ferric uptake regulator protein, represses Stx1 gene expression when high levels of iron are present. This illustrates that EHEC virulence is not dependent on a single gene or gene product but is a multifactorial process.

Despite its key role in bacterial pathogenesis, the modulation of EHEC survival and expression of virulence genes along the human GIT remains largely unknown as studies of human volunteers are unethical [14]. This review aims to give an overview of *in vitro* (simple models of the human gut) and *in vivo* (animal models) studies describing the effect of GI cues on EHEC viability and virulence including motility, adhesion, phage induction and Stx production. Considering the complexity of human digestive physiology (Figure 1), this review will address the influence of numerous abiotic (e.g., physicochemical parameters such as pH, bile, low oxygen concentration or digestive enzymes) and biotic (e.g., intestinal microbiota and host mucosa) factors of the human gut on EHEC infection. Lastly, we will discuss how well-controlled and validated dynamic and multi-parametric *in vitro* models of the human gut can help address knowledge gaps in EHEC pathogenesis.

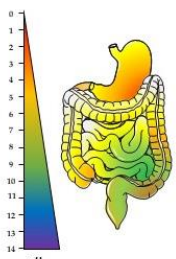

Organs	pH	Oxygen level	Microbial loads (CFU/ml)	Transit time	Digestive processes
Stomach		aerobic	$10^1\text{-}10^3$	15-150 min	<ul style="list-style-type: none"> Mechanical digestion Peristaltic mixing Food breakdown
Small intestine			$10^3\text{-}10^4$	3-5 h	<ul style="list-style-type: none"> Chemical digestion of proteins and lipids
- Duodenum - Jejunum - Ileum			$10^4\text{-}10^6$ $10^6\text{-}10^8$		<ul style="list-style-type: none"> Mechanical digestion Peristaltic mixing and propulsion Segmentation Chemical digestion of carbohydrates, lipids, nucleic acids, polypeptides Absorption of di-tripeptides, amino acids, glucose, fructose, vitamins, minerals and water
Colon	anaerobic	$10^{10}\text{-}10^{12}$	24-96 h	<ul style="list-style-type: none"> Mechanical digestion Segmental mixing and propulsion Fermentation (short chain fatty acids production) Absorption of ions, minerals, vitamins, water and organic molecules 	

Figure 1. Overview of the main physical and chemical processes of the human gastro-intestinal tract.

This figure summarizes the key physico-chemical and microbial processes occurring in the gastrointestinal tract of healthy human adults

2. Effect of Abiotic Parameters of the Human Gut

2.1. Effect of pH

2.1.1. Variations in pH along the Human Gut

The pH of the human GIT is extremely variable. In the mouth, the pH of saliva is usually between 6.5 and 7.5 and can be altered by the pH of masticated food. After swallowing, the food enters the upper part of the stomach, where the pH decreases to 4–6.5. Digestion occurs, mainly in the lower part of the stomach, by secretion of hydrochloric acid (HCl) and pepsin, which further reduces the pH from 4 to an extremely acid pH of around 1.5. In the small intestine, the pH rises to 6 in the duodenum and reaches about 7.4 in the terminal ileum. While the pH drops to 5.7 in the caecum, it gradually increases again to a value of 6.7–7 in the distal colon [15].

2.1.2. Effect of pH on EHEC Survival and Physiological State

Regarded as a neutrophile, EHEC, like other *E. coli*, grows well in conditions of near neutrality, at pH values of 6 to 8. It also grows, although more slowly, at pH values of 5 and 9. However, regardless of the value of the pH outside the bacteria, the internal pH (pHi) is maintained close to 7.6 [16]. Many enzymes necessary for microbial growth only work within this narrow pH range. This suggests that in the human gut, EHEC has to adapt to the wide range of GI pH (especially acidic pH of the stomach) to maintain pHi homeostasis. This is accomplished by the buffer capacity of the bacterial cell, where the outward transport of protons associated with respiration and ATP hydrolysis creates a transmembrane gradient [17], and electroneutral antiport systems exchange protons for certain cations, particularly Na⁺ and K⁺ [17].

The resistance of EHEC to low pH conditions has been widely reported [18–20] and even if there are strain-specific variations with regard to acid tolerance, EHEC have a greater ability to survive in complex acidic environments than commensal *E. coli* [21]. This ability to resist an acidic environment contributes to its low infectious dose by allowing small numbers of the organism to pass through the stomach acidity barrier [20]. When the growth capacities of different EHEC O157:H7 strains were compared before and after exposure to acidic stress, differences in viability of no greater than a log-fold were observed, indicating that they were able to withstand both brief acute acid stress and acid-adapted acute acid stress [22,23]. These results are supported by an evaluation of the wild type strain EDL933 over a broad pH range (3 to 10). While the strain showed an optimal growth at pH 5.5–8.5 [24], this was only reduced by a log-fold at pH 4, and growth of culturable cells was even observed at pH 3 and at 10, although to a lesser extent.

E. coli O157:H7 adapted to pHs of 5–9 exhibited changes in their membrane lipid composition, which in turn affected membrane fluidity, with more evident alterations observed in acidic conditions [23]. The decrease in membrane fluidity under acidic growth conditions may be associated with changes in proton flux, whereby adapted cells do not allow protons to flow into the cell as easily as non-adapted cells [23]. The decrease in membrane fluidity may increase acid resistance. Acid adaptation also reduced the total amount of verotoxin produced, perhaps by repressing the production of toxin [23].

Besides the mechanisms of adaptation, *E. coli* displays a complex set of stress response mechanisms that bestow an ability to survive, or even thrive, in acidic conditions. Components of the growth medium, particularly arginine, lysine, ornithine and glutamic acid, were reported to enhance the acid resistance of fermentative cells [25,26]. Acid resistance in enteric bacteria such as EHEC involves enzyme-based responses to acid stress classified in five acid resistance (AR) pathways. AR1 is an oxidative system and its mechanism of action is the least known [27]. AR2, AR3, AR4 and AR5 are glutamate (GAD system)-, arginine-, lysine- and ornithine-decarboxylase pathways, respectively. Each of the amino acid decarboxylase-based pathways (AR2–AR5) is activated under different conditions and is based on decarboxylation reactions that consume a proton and release carbon dioxide in return [26]. These reactions are complemented by chaperon-based acid resistance systems,

in which HdeA and HdeB protect periplasmic proteins, which are more vulnerable to acid denaturation and damage [28]. Gene expression assays show clear up-regulation of numerous decarboxylase genes after prolonged acid stress [22], confirming the involvement of the amino-acid decarboxylase-based AR pathways after acid stress [26]. Moreover, the presence of the Stx phage-encoded transcriptional regulator CII was identified as the controller of the acid response in Stx lysogens and, by upregulation of the GAD operon (AR2 pathway), an Stx2 phage enhanced acid resistance in Stx lysogens [29].

2.1.3. Effect of pH on EHEC Virulence

The pH in general and acid stress in particular, affects several critical virulence properties of EHEC, including increase in motility and host adhesion, iron uptake, and repression of Stx phage induction (with consequently no increase of Stx production). Moreover, epithelial cells infected with acid-stress EHEC O157:H7 showed significantly higher levels of apoptosis than cells infected with unstressed bacteria [22].

Motility

In the non-pathogenic strain *E. coli* K-12, flagellar and chemotaxis genes are repressed at pH 8.7, likely by inhibition of the proton pumps and proton retention. This results in reduced motility, as protons are responsible for flagella synthesis and motive force [30]. In contrast, low pH accelerates acid consumption and proton export, thereby enhancing motility [30]. In EHEC O157:H7, motility was slightly increased in acute acid-stress conditions compared with no acid stress [22]. Protein H-NS, a nucleoid-associated protein, seems to play a role in the regulation of bacterial motility in response to low pH [30]. Interestingly, some results indicate that motility is affected more by the variation between extracellular pH (pH_o) and pH_i than by the external pH. It has been reported that if the pH_o is acidic, the motility of *E. coli* is impaired, suggesting that the loss of motility could be caused by the change in cytoplasmic pH [31]. The subsequent increase in the intracellular proton concentration interferes with the release of protons from the torque-generating units, resulting in a slowing or stopping of the flagellum motors [32].

Adhesion

Compared to unstressed bacteria, acid-stressed EHEC O157:H7 adhered more effectively to different cell lines [22], even after subtle pH changes. In contrast, commensal *E. coli* did not show significant differences in adhesion regardless of the acidic conditions [22]. Gene array studies found that prolonged acid stress caused a significant up-regulation in the expression of flagella genes, T3SS proteins, adhesion and fimbrial proteins, but not housekeeping genes [22]. *Lpf 2* expression was also four-fold higher at pH 6.5 than at pH 7.2, which might be important for adhesion and colonization of the small intestine [33].

Iron Uptake

In addition to iron-utilizing systems, Fur and iron regulate a variety of genes involved in *E. coli* acid resistance, thereby linking the uptake and availability of iron to the response to variations in pH [34].

Stx Phage Induction and Stx Production

The induction of Stx phages was inhibited at pH 3 and 4, both in control cultures and those treated with inducing agents like mitomycin C [24]. The inhibition of Stx2 phage induction at a low pH indicates the presence of some other, yet unknown, regulator that prevents phage induction. Consequently, lysogen survival after the lysis caused by phage induction is higher in acidic environments, and this protective effect can be considered as an important virulence factor. The number of Stx phages induced from EHEC increased at pH 5.5–8.5, reaching a maximum at pH 7, while their number decreased at pH 10 [24]. Little and colleagues also reported that the purified

lambda phage repressor underwent self-cleavage at alkaline pH in vitro [35]. Other studies showed activation of the SOS system by alkaline pH in *E. coli* for Stx phage induction [36]. This means that alkaline pH could lead to phage spontaneous induction [37], that causes increase of *stx* expression when pH increases and in the absence of an inducing agent. Preferential Stx phage induction at neutral and alkaline conditions might be explained by the need to release and activate Stx in the intestine, where pH values are higher.

Low pH also inhibits phage infection [38] and consequently the possible transduction of *stx* by Stx phages [39]. In fact, lysogenic conversion by Stx phages seems almost impossible in a low pH environment, possibly because phages cannot attach to the host cell at a pH of 3, which affects proteins responsible for phage attachment. The phage capsid apparently provides the DNA with enough protection in almost all conditions, except perhaps those of a low pH. The reported instability of the bacteriophage capsid at low pH values (<4) [40,41] could explain why results obtained at pH 3 differed from those at pH 7 or 9. A low pH, below or equal to the phage isoelectric point, has also been shown to cause phage aggregation [42].

A direct consequence of the repression of Stx phage induction, particularly evident at low pH, is the lack of expression of *stx* even under phage-inducing conditions. In accordance to the study by Imamovic and Muniesa [24], the production of Stx by *E. coli* O157:H7 in syncase broth was optimal at a pH of 8 to 8.5 [24]. Some studies attribute the inhibition of Stx production by probiotic bifidobacteria [43] partly to a low pH. The adaptation of cells to pH conditions also influenced Stx production, which was lower in acid-adapted than non-adapted and alkali-adapted bacteria [23,44]. Moreover, acid-adapted EHEC at pH 5.6 produced less Stx than non-acid-adapted bacteria at pH 7.4 after 48 hours. Other authors do not report any significant changes of Stx production at low pH [22] and this may seem contradictory. In their study, the authors used an experimental approach where Stx production was not assayed under Stx phage inducing conditions, which is when the reduced *stx* expression as a consequence of the repressed phage induction becomes more evident. Consequently, the microarray results show no changes of *stx* expression compared with the basal *stx* expression produced at neutral pH, also under non-inducing conditions.

All together, these data suggest that EHEC strains orchestrate a complex machinery including expression of virulence determinants in response to acidic environment of the stomach.

2.2. Effect of Bile Salts

2.2.1. Bile Salts in the Gut

The emulsification and solubilisation of dietary lipids and elimination of substances that cannot be efficiently excreted in urine is accomplished by bile. Bile is a complex digestive secretion produced by the liver (one liter per day), and is composed of a high amount of lipids and a low amount of proteins. The major constituents of bile are bile acids, which are present in the small intestine in a conjugated form (bile salts) at a concentration that generally varies from 0.2 to 2.0%, although dietary intake and nourishment status can greatly affect bile levels. The concentration decreases from 10 mM in the duodenum to 2 mM in the ileum as bile salts are passively reabsorbed along the entire length of the small intestine and then actively reabsorbed in the ileum [45]. The concentration gradient in the small intestine and the very low levels of bile salts remaining in the large intestine may have significant consequences for the temporal expression of virulence genes by pathogenic bacteria [46]. Bile salts also act as detergents due to their amphipathic properties, which makes them potent antimicrobial agents that disrupt cell membranes [47], damage DNA [48] and cause oxidative stress [49].

2.2.2. Effect of Bile Salts on EHEC Survival/Physiological State

Adaptability to the harsh effects of bile acids is a critical component of survival for commensal bacteria and for GI pathogens. Enteric bacteria are known to alter protein production and increase mechanisms of resistance to survive the deleterious effects of bile [47], but whether this is a generalized

stress response or a specific sensory phenomenon is unclear. *E. coli* in particular is adapted to the GIT and tolerates the presence of bile salts. Its mechanism of resistance is based on modified membrane structures that reduce bile permeability and an active removal of bile acids that have traversed the membranes into the cytoplasm [47]. Bile acids enter cells through the OmpF porin of the outer membrane, but are immediately expelled via efflux pumps [50].

Resistance to bile can be even greater in EHEC. In an inoculated bovine host model, EHEC O157:H7 was able to grow in 15% bile and pass from the gallbladder throughout the intestinal tract [51]. Other studies report the isolation of EHEC O157:H7 [52] from the gallbladder of calves, where the strain is highly persistent [53]. Moreover, bile salts stimulated the expression of genes associated with the acid-stress response of the bacteria [54].

2.2.3. Effect of Bile Salts on EHEC Virulence

As previously mentioned for pH, bile salts are able to modulate various facets of EHEC virulence.

Motility

Bile treatment of EHEC O157:H7 affected mRNA levels for the entire flagella-chemotaxis regulon, resulting in a two- to four-fold increase in mRNA levels of genes associated with the flagella hook-basal body structure while causing a two-fold decrease in expression of “late” flagella genes associated with the flagella filament, stator motor, and chemotaxis [46]. However, the mechanisms for this remain unclear. In addition, the presence of bile salts reduced flagellin gene (*fliC*) transcription in O157:H7 in vitro [54]. Contradictory findings on the importance of flagella in EHEC pathogenesis have been reported, indicating that a flagellum is not playing the same role depending on the model tested.

Adhesion

Contradictory effects of bile concerning adhesion have been highlighted in different studies. While growth of EHEC O157:H7 strains in MacConkey agar containing 0.5% bile salts increased the expression of *lpf* by 2.7-fold [33], transcriptomic analysis showed that bile exposure reduced expression of the LEE pathogenicity island [46]. In accordance with the latter observations, Yin and colleagues showed that the presence of bile inhibited O157:H7 adherence to epithelial cells in vitro and repressed expression of LEE-associated genes [54].

Iron Uptake

Bile salts increased mRNA levels for 17 genes associated with iron scavenging and metabolism, and counteracted the inhibitory effect of the iron-chelating agent 2,2'-dipyridyl on the growth of EHEC O157:H7 [54]. These findings suggest that EHEC may use bile as an environmental signal to adapt to changing conditions associated with the iron-scarce environment of the small intestine [46].

Stx Phage Induction and Stx Production

Bile salts (sodium cholate and sodium deoxycholate) attenuated the excision of a subset of complete and truncated Stx bacteriophages from EHEC O157:H7 strains [55]. The *stx* expression is directly linked to the phage induction process, therefore if Stx phage is not induced, *stx* expression is not enhanced. The absence of Stx phage induction in the presence of bile salts is in accordance with Hamner and colleagues [46] who found no significant changes in *stx* gene expression in O157:H7 treated with 0.8% bile salts in non-inducing conditions [24]. All together, these findings suggest that bile salts are not influencing, or rather inhibiting, *stx* expression in EHEC.

2.3. Role of Low Oxygen Concentrations

2.3.1. Oxygen Distribution in the Gut

The environment in the gut is characterized by varying levels of oxygen with concentrations decreasing from the stomach towards the distal colon. Several factors are likely to contribute to the development of this gradient including oxygen uptake by swallowing food, digestion-dependent blood flow and oxygenation of the intestinal mucosa, and oxygen consumption by the epithelium and gut microbiota [56,57]. In addition to longitudinal differences in oxygen levels along the GIT, a radial gradient with increasing oxygen concentrations from the gut lumen to the mucosal surface is evident which manifests itself in elevated levels of aerotolerant commensal bacteria associated with human intestinal mucosa compared to faeces [58].

2.3.2. Oxygen and *E. coli* Fitness

As facultative anaerobes, commensal and pathogenic *E. coli* such as EHEC exhibit considerable flexibility in using aerobic and anaerobic respiration and fermentation to generate energy in the changing oxygen environment in the gut. In the presence of oxygen, *E. coli* can utilize two respiratory oxidases for aerobic respiration: whereas the low-affinity cytochrome *bo*₃ oxidase is active under aerobic conditions, the high affinity *bd* oxidase can still bind oxygen at nanomolar concentrations but generates less energy [59,60]. Under anaerobic conditions, *E. coli* can use a range of alternative terminal electron acceptors including nitrate, nitrite, trimethylamine *N*-oxide (TMAO), dimethyl sulfoxide (DMSO), or fumarate [61]. In the absence of alternative electron acceptors, *E. coli* can perform mixed acid fermentation generating a mixture of lactate, acetate, ethanol, succinate, formate, carbon dioxide, and hydrogen. However, this process is only used as a last resort as it is the least energetically efficient [62].

2.3.3. Influence of Oxygen Levels on EHEC Virulence

Adhesion

Interestingly, EHEC O157:H7 grown in chemostat conditions demonstrated reduced growth and metabolic efficiency under anaerobic or oxygen-limited conditions compared to aerobic cultures [63]. EHEC grown under oxygen-limited conditions adhered significantly better to human epithelial HEP-2 cells compared to aerobic cultures suggesting the induction of adhesins in oxygen-restricted environments. While increased binding of anaerobic chemostat cultures of EHEC O157:H7 was independent of type 1 pili [63], low oxygen levels enhanced expression of sorbitol fermenting protein (Sfp) fimbriae and adherence to human intestinal Caco-2 and HCT-8 cells in sorbitol-fermenting EHEC O157:NM [64]. In addition, oxygen levels influence expression of the EHEC T3SS and/or secretion of effector proteins such as EspA. When EHEC was grown in LB medium, lower amounts of T3S proteins were detected under anaerobic versus aerobic conditions [65]. However, addition of the alternative terminal electron acceptors nitrate or TMAO, but not DMSO or fumarate, restored T3S to aerobic levels and resulted in increased EspA expression and A/E lesion formation on Caco-2 cells. Further studies demonstrated that anaerobic growth without electron acceptors resulted more frequently in a premature T3SS suggesting that activation of TMAO- or nitrate-specific respiration enhances maturation of a functional T3SS in the absence of oxygen [65]. Reduced expression of the EHEC T3SS at low oxygen levels was also observed in a recent study, where EHEC was grown in low glucose DMEM medium under anaerobic, microaerobic or aerobic conditions [66]. Importantly, oxygen availability affected how the transcription factors Cra, KdpE, and FusR modulated LEE gene expression: while KdpE and FusR repressed expression of the T3SS under anaerobic conditions, Cra activated LEE gene expression under aerobiosis [66]. This strategy would allow EHEC to fine-tune expression of the T3SS to the radial oxygen gradient in the intestine with minimal LEE gene expression (and energy expense) in the anaerobic gut lumen and targeted T3S and injection of effector proteins at

the oxygenated epithelial surface. To simulate the microaerobic zone of oxygenation at the intestinal epithelium, a vertical diffusion chamber (VDC) system was used where a polarized monolayer of T84 colon carcinoma cells grown on a permeable membrane was inserted between two half chambers. While the apical side of the model epithelium was perfused with an anaerobic gas mixture and infected with EHEC, the basolateral side was maintained under aerobic conditions to simulate the oxygen supply by the bloodstream [67]. In this system, EHEC T3S and host cell adherence were enhanced under microaerobic versus aerobic conditions indicating that the presence of an epithelial oxygen gradient promotes EHEC A/E lesion formation in the human colon.

Stx Production

Initial studies on steady-state chemostat cultures demonstrated similar Stx levels during anaerobic and aerobic growth [63]. However, Stx production and release was enhanced under aerobic versus microaerobic conditions during EHEC infection of polarized T84 cells in the VDC system [68]. As previously mentioned, *stx* expression and release (particularly for Stx2) is largely governed by the induction of the phage lytic cycle which is triggered by DNA-damaging agents including reactive oxygen radicals [69,70]. As these are naturally produced during the sequential reduction of molecular oxygen in aerobic respiration [71], this might explain the increased production of Stx in the presence of oxygen. In addition to release of free toxin after bacterial lysis, Stx can be released within outer membrane vesicles (OMV) during bacterial growth [72,73]. Interestingly, anaerobic conditions promoted Stx2 release within OMV during EHEC culture in Casein Hydrolysate Yeast Extract (CAYE) broth while free toxin was prevalent in aerobic cultures [74]. The mode of Stx release could have an impact on the mechanism and efficiency of toxin penetration across the gut barrier, as human intestinal epithelium does not express the Stx receptor Gb₃ [75] whereas OMVs can be internalised by host cells via receptor-dependent and -independent pathways [76]. Notably, VDC studies have shown enhanced Stx transport across polarized T84 cells during microaerobic versus aerobic EHEC infection [68], which could indicate enhanced toxin uptake via OMVs. Alternatively, low oxygen levels might promote the expression of bacterial factors facilitating toxin transport. As oxygen levels have a profound influence on EHEC growth, expression of the T3SS, Stx release and transport, it is important to reflect these conditions in experimental model systems when studying EHEC pathogenesis in the human gut.

2.4. Impact of Fluid Shear

2.4.1. Fluid Shear in the Gut

Fluid shear can be defined as the distribution of frictional forces due to hydrodynamic flow generated by GI peristaltic activity against the surface of intestinal epithelial cells. In the human gut, there is a decreasing gradient of fluid shear stress from the mucosa to the gut lumen. Physiological levels of shear stress found in the intestinal epithelium during peristalsis may range between 35 and 0.02 dynes/cm² [77]. Shear forces can approach 5 dynes/cm² at the brush border surface and decrease to 2–3 dynes/cm² between microvilli. Bacterial fimbriae are presumed to establish and maintain binding to target cells in the face of hydrodynamic shear forces generated by GI peristaltic activity.

2.4.2. Effect of Fluid Shear on EHEC Virulence

Studies conducted in uropathogenic *E. coli* and *Pseudomonas* strains showed that shear stress inhibits pathogen adhesion, thereby serving as a non-specific host defence mechanism against bacterial colonization [78]. However, a novel mode of shear-enhanced, or so-called catch-bond, adhesion has been described in bacteria wherein the adhesive interactions become stronger rather than weaker under increasing shear conditions [79]. Type 1 fimbriae and FimH from *E. coli* are the main bacterial systems for which the structural aspects of catch-bond formation have been explored in detail, especially in uropathogenic *E. coli*. For EHEC O157:H7, Alsharif and colleagues have shown that initial attachment

to host cells generated a mechanical cue, which was further enhanced by fluid shear level in the host GIT and was required to fully activate LEE-encoded virulence mechanisms [80] via the LEE-encoded global regulator (Ler). This study shows that, in addition to chemical signals, EHEC can sense and respond to mechanical cues to adapt to the physiology of the host and fine-tune virulence activation.

The effect of abiotic factors on EHEC virulence is summarized in Figure 2.

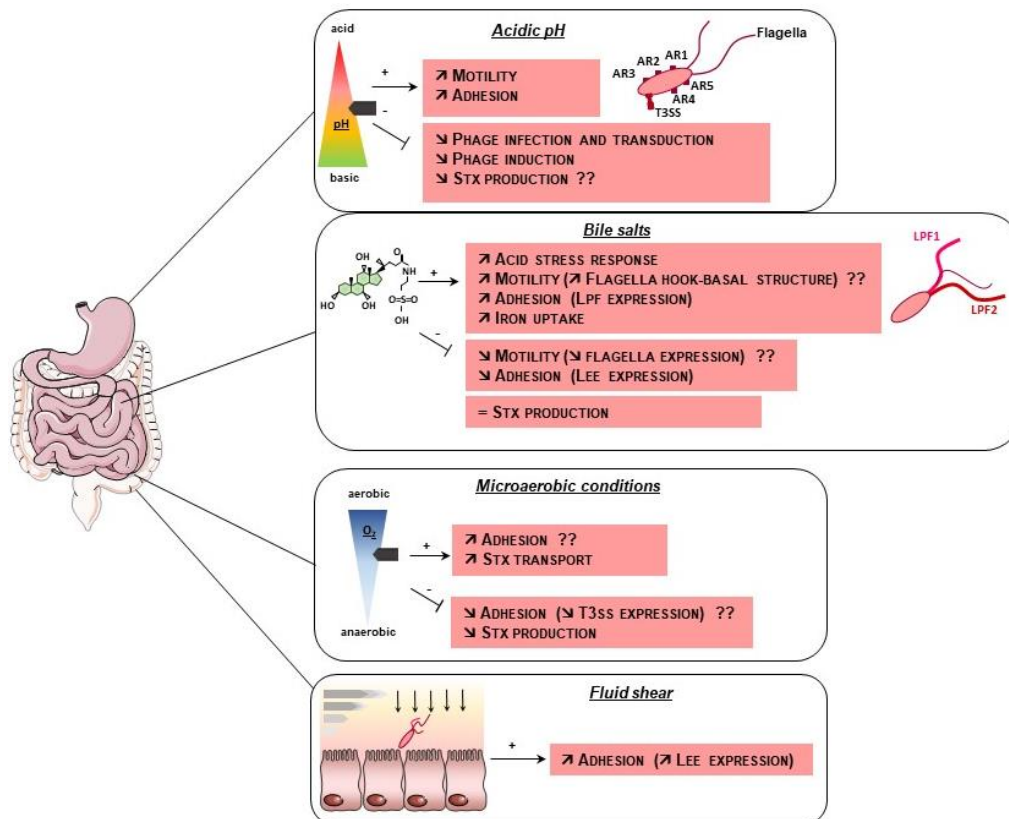


Figure 2. Influence of abiotic factors on EHEC virulence. EHEC has the ability to resist the stressful conditions encountered in the gut such as acidic pH and bile salts and utilizes various abiotic GI cues to modulate the expression of its virulence factors. Stx: Shiga-toxins, LPF: Long Polar Fimbriae, LEE: Locus of Enterocytes Effacement, T3SS: Type III secretion system, AR: Acid resistance, arrow with the sign + represents an activation process, bolded line with the sign – represents repression, ?? indicates contradictory results.

3. Effect of Biotic or Host Cell-Related Parameters

3.1. Interactions with the Gut Microbiota

3.1.1. Importance of the Gut Microbiota

A dense population of microorganisms that has important physiological functions in the gut colonizes the human gut. One of these functions is to confer protection against invasion by pathogens. The molecular basis for this “colonization resistance” is multifactorial and involves several processes including competition for nutrients, stimulation of immune defenses and direct inhibition of pathogen expansion through production of inhibitory molecules and/or bacteriocins by commensal species [81,82]. Numerous studies have deciphered how bacterial pathogens circumvent colonization resistance in order to infect the GIT and induce disease. The diverse strategies include the use of specific nutrient sources different from those used by commensals, the alteration of gut normobiosis through induction of inflammation, and the direct killing of competitors via specific bacterial systems [83,84].

In the next section, we will focus on the interactions between the human gut microbiota and EHEC, as well as the strategies employed by the pathogen to overcome colonization resistance.

3.1.2. Effect of the Gut Microbiota on EHEC Survival/Physiological State

One of the major aspects of colonization resistance is probably competition for nutrients between the gut microbiota and incoming pathogens. Indeed, Le Bihan and colleagues demonstrated that growth of EHEC O157:H7 strain EDL933 in filtrated caecal content of human gut microbiota-associated rats resulted in changes in expression of almost 20% of genes compared to growth in caecal contents of axenic rats [85]. Interestingly, most of these genes were associated with metabolic functions, indicating adaptation of EHEC to a limited nutrient environment by reprogramming and activation of metabolic pathways. Specifically, these studies have shown that EDL933 switches from a glycolytic to an anaplerotic metabolic profile characterized by the degradation of alternative carbon sources to supply intermediates of the Krebs cycle such as amino acids (tryptophan, phenylalanine, leucine), amino sugars (*N*-acetylneuraminic acid) or small aromatic compounds (3-hydroxyphenylpropionic acid; 3-hydroxycinnamic acid). While members of the Proteobacteria phylum, especially *Enterobacteriaceae*, represent a very small proportion of the total gut microbiota, they appear to have a key role in nutrient competition with most bacterial pathogens since they share the same nutritional niche. Using streptomycin-treated mice, several studies from the group of Cohen and Conway determined the sugar-defined niche of commensal and pathogenic strains of *E. coli* elegantly demonstrated that pre-colonization of animals with a combination of *E. coli* strains consuming the five carbohydrates preferentially used by EDL933, prevented gut colonization by the pathogen [86–88]. Similarly, germ-free mice colonized by certain commensal *E. coli* strains efficient in the utilization of proline were resistant to colonization by EHEC O157:H7, indicating another method for commensals to provide colonization resistance [89].

Apart from competition for nutrients, colonization resistance can be mediated by direct antagonism of commensals over pathogenic strains, and several strains of *E. coli*, *Lactobacillus reuteri*, *Clostridium butyricum* and *Bifidobacterium* sp. have been shown to inhibit EHEC growth [90–93]. Different types of molecules produced by gut microbes have been associated with growth inhibition and/or killing of EHEC including short-chain fatty acids (SCFA, see Section 3.3), lactic acid, hydroxypropionaldehyde and bacteriocins [92,94–96].

3.1.3. Effect of the Gut Microbiota on EHEC Virulence

As previously mentioned, activities of microbial species from the gut microbiota influence the nature and concentrations of metabolites present in the gut ecosystem and may therefore affect virulence gene expression in pathogens. Numerous studies have investigated the impact of individual commensal species or, less frequently, of the entire gut microbiota on several aspects of EHEC infection. The next sections will highlight the most recent discoveries exemplifying how the gut microbiota can affect EHEC virulence.

Adhesion

Several studies have shown that *Lactobacillus* and *Bifidobacterium* species decrease EHEC adhesion to intestinal epithelial cells in vitro by different mechanisms including direct competition for binding sites at the enterocyte surface [97–101], production of molecules modulating expression of adhesins [102–104] and stimulation of mucus production, thereby preventing access to the epithelial surface [105,106]. Conversely, in vitro co-culture of EHEC O157:H7 and O103:H25 and the commensal strain *Bacteroides thetaiotaomicron* led to increased expression of all LEE operons [107,108], increased epithelial adhesion and formation of A/E lesions. The same effect was observed following co-incubation of EHEC O157:H7 and *Enterococcus faecalis*, a commensal strain belonging to the phylum Firmicutes [107]. In contrast, LEE gene expression in EDL933 was down regulated during EHEC growth in the filtrated caecal contents of human gut microbiota-associated rats [85].

At the molecular level, several studies pinpoint a role of quorum-sensing molecules in the control of LEE gene expression and adhesion to epithelial cells. Regulation of the LEE involves LuxS, which is required for the synthesis of autoinducers AI-2 and AI-3 [109–111]. The receptor for AI-3, QseC, also senses the eukaryotic hormone norepinephrine (NE) which is the main neurotransmitter of the sympathetic nervous system [112] (see Section 3.6). Moreover, NE can be transformed by the gut microbiota to 3,4-dihydroxymandelic acid (DHMA) which has been shown to be a chemoattractant for EHEC and to modulate expression of LEE genes as well [113]. DHMA is generated by the enzymes tyramine oxidase and aromatic aldehyde dehydrogenase, which are encoded by numerous members of the *Enterobacteriaceae* family. Another signaling molecule present at high concentrations in the GIT, indole, modulates EHEC virulence properties. Indeed, indole was found to exert divergent effects on EHEC chemotaxis, motility and enterocyte adhesion when compared to NE [114]. However, another study determined that the influence of indole on LEE expression depends on its concentration, with activating effects occurring at low concentrations (μM) and repressing effects at high concentrations (mM) [115]. Altogether, these results demonstrate that the influence of the gut microbiota (and consumed or generated metabolites) on EHEC virulence is dependent on the commensal strains, metabolite concentrations and experimental conditions used for each study. Since EHEC virulence gene expression in the intestine is governed by a myriad of environmental signals affected by the presence and/or activities of individual commensal species in the gut ecosystem, this reinforces the need to perform integrative investigations of EHEC behaviour within the gut, for example by using mathematical models to predict the outcomes of such a complex ecosystem [116,117].

Stx Production and Toxicity

Activities of the human gut microbiota also affect Stx production by EHEC. Indeed, in vitro growth of EDL933 in conditioned medium from a complex human gut microbiota, led to a lower synthesis of Stx2 when compared to growth in unconditioned medium [118]. This is mediated by inhibition of the lytic cycle via the SOS response regulator RecA. Interestingly, similar results were obtained when EHEC O157:H7 was cultured in medium conditioned by the predominant species of the Bacteroides phylum *B. thetaiotaomicron* only [108,118]. Furthermore, Cordonnier and colleagues demonstrated that reduced Stx2 production was dependent on internalization of vitamin B₁₂ by *B. thetaiotaomicron* as a mutant deficient in an outer membrane receptor of vitamin B₁₂ was unable to repress the Stx2 production. This work suggests that the concentration of vitamin B₁₂ in the gut and by extension, activities of commensal bacterial species producing and/or consuming vitamin B₁₂, may modulate EHEC Stx production and consequently the outcome of the infection. Other studies also demonstrated that the gut microbiota can affect the translocation of Stx across intestinal epithelium or increase the number of Gb3 receptor in murine tissues, thereby enhancing susceptibility to EHEC infection [119,120]. Whereas germ-free mice were susceptible to EHEC infection, mice mono-associated with *Bifidobacterium longum*, but not *B. adolescentis*, survived infection [119]. This species-specific effect relied on the presence of specific carbohydrate transporters in protective strains conferring the ability to consume specific carbohydrates. This resulted in the production of acetate, which was partly responsible for the limited translocation of Stx from the gut lumen into the blood observed in mice inoculated with protective *Bifidobacterium* strains. Research from another group has determined that mice fed with a high fiber diet were more susceptible to EHEC infection [120]. Gut microbiota of these mice contained reduced levels of native *Escherichia* species compared with mice receiving a low-fibre diet, which might facilitate EHEC colonization in the absence of competitors. The higher levels of butyrate in the GI contents of high fiber diet mice also induce the synthesis of Gb3 in both the gut and kidneys. This strongly suggests that susceptibility to EHEC infection also depends on diet and/or the capacity of the gut microbiota to produce SCFA (see Section 3.3). In conclusion, several in vitro and in vivo studies have demonstrated that the gut microbiota can modulate the production of Stx by EHEC and therefore can affect the outcome of an infection.

3.2. Interactions with Mucin Sugars

3.2.1. The Mucus Layer in the Gut

The intestinal epithelium is covered by a complex layer of mucus mainly constituted of secreted oligomerized mucins which are large heavily O-glycosylated proteins [121]. The main monosaccharides found in human intestinal mucins are galactose, N-acetylgalactosamine (GalNAc), fucose and N-acetylneuraminic acid (Neu5Ac) [122]. Typically, these carbohydrates can be cleaved from mucins by members of the gut microbiota expressing specific enzymes (glycoside hydrolases, proteases and sulfatases) and become available as nutrients for themselves or surrounding bacteria. In the next section, we will discuss how the mucus, and particularly mucin carbohydrates, affects EHEC behaviour during the infectious process.

3.2.2. Effect of Mucus on EHEC Fitness

While EHEC possesses all the genes required to utilize the five sugars present in mucins, it has been shown that only the consumption of fucose, galactose and GlcNAc is important for efficient colonization of the mouse gut by strain EDL933 [86]. As *E. coli* is not able to degrade complex polysaccharides, the action of mucinolytic commensals is needed for release and access of monosaccharides. This is the basis for the “restaurant” hypothesis established by the group of Conway and Cohen stipulating that *E. coli* colonizes the mucus layer within local bacterial communities including anaerobes which are able to break down polysaccharides [123]. Interestingly, EHEC, but not commensal *E. coli*, produces proteins that can facilitate the release of mucin sugars by mucinolytic commensals. Indeed, EHEC secretes the metalloprotease StcE which is able to cleave mucins and contributes to reduction of the mucus layer covering intestinal cells [124,125]. Another example is the presence of up to 10 prophage-located *nanS* genes (*nanS*-p) in the genome of O157:H7 strain EDL933 and O104:H4 strain LB226692 [126,127]. The *nanS*-p genes encode esterases involved in deacetylation of 5-N-acetyl-9-O-acetyl neuraminic acid (Neu5,9Ac₂), another form of neuraminic acid present in mucus. This reaction leads to release of Neu5Ac which can then be internalized and metabolized by the pathogen. As additional clues of their contribution to EHEC pathogenesis, both *stcE* and *nanS*-p genes are co-expressed with LEE and *stx*₂ genes, respectively [124,126]. Because intestinal mucins are heavily sulfated, a similar hypothesis can be attributed to a sulfatase-encoding gene co-regulated with the LEE genes in EHEC [128]. Altogether, these data strongly suggest that EHEC has developed tricks to efficiently access mucin-derived sugars and benefit from nutrient source to colonize the GIT.

3.2.3. Effect of Mucus on EHEC Virulence

Adhesion

To adhere to the intestinal epithelium, EHEC must penetrate the mucus layer overlying the epithelium. Interestingly, a recent study revealed that adhesion of EHEC to mucin-producing epithelial cells was higher compared with mucin-deficient cell lines [125]. Similar observations have been reported for other intestinal pathogens such as enteropathogenic *E. coli* (EPEC) and *Salmonella enterica* [129,130]. No specific adhesin has been associated with EHEC binding to mucus-producing cells. However, the absence of flagella seems to be important for this interaction since a Δ *fliC* mutant adhered more efficiently than the wild-type strain [125], and expression of flagellar genes was repressed upon exposure to mucus [131]. Adhesion to mucus-producing cells was also markedly correlated with a decreased thickness of the mucus layer [125,132]. The reduction of mucin levels was dependent on the metalloprotease StcE since a Δ *stcE* mutant was not able to disrupt the mucus layer covering epithelial cells or human colonic biopsies [125]. Subtilase, a cytotoxin produced by some non-O157 EHEC strains, might also contribute to mucin depletion as observed following treatment of human colonic mucosa with an O113:H21 strain or with purified subtilase [133]. Alteration of the mucus layer by EHEC thereby promotes access to the epithelial surface and binding of the pathogen to enterocytes.

In addition to its ability to penetrate mucus, EHEC also regulates the synthesis of virulence factors involved in bacterial adhesion depending on the concentration of mucin sugars present in close proximity and by extent, on mucinolytic activities of commensals. Indeed, several sugar-sensing systems are involved in the control of both metabolic and LEE gene expression in EHEC. For example, the regulatory protein NagC, which represses GlcNAc and galactose catabolism in *E. coli*, also controls the expression of LEE genes via direct binding to the LEE1 promoter region [128]. Consequently, presence of GlcNAc or Neu5Ac in the medium inhibits EHEC adhesion to epithelial cells in vitro. This study also demonstrated that modification of GlcNAc concentrations in the GIT of mice, either by exogenous addition of the sugar or by release via activities of mucinolytic bacteria, affected the in vivo fitness of EHEC in a NagC-dependent manner. Another work identified a new two-component system in EHEC, FusKR, which is involved in the detection of external fucose as a signal to regulate expression of LEE genes [134]. Similar to GlcNAc or Neu5Ac, high concentrations of fucose repress production of T3SS and inhibit EHEC adhesion. Taken together, these studies suggest that regulation of LEE genes by mucin-derived sugars contributes to the relocation of the pathogen from the intestinal lumen to the epithelium surface. When crossing the outer mucus layer, EHEC senses high concentrations of free forms of sugars resulting from the activities of mucin-degrading commensal bacteria and, in response, represses the production of the T3SS which is not required at this stage. When the pathogen moves closer to the epithelium, sugars are mostly linked to mucins, and expression of LEE genes is activated in order to promote adhesion to epithelial cells. It is noteworthy that sugar catabolism and T3SS expression are not coordinated in the same way by GlcNAc and fucose. Whereas NagC activates *nag* and LEE genes, FusR represses both *fuc* and LEE genes [128,134]. The reasons for this difference remain unknown, and further studies are required while taking into account the complexity of the mucus structure in terms of composition, organization and thickness along the GIT.

Production and Toxicity of Stx

Among the Stx2 variants, Stx2d has a cytolytic activity that is increased 35- to 350-fold in the presence of intestinal mucus from several animals including humans and mice [135]. Originally, the *stx2d* gene has been discovered in O91 strains which are highly virulent in mice, but has now been detected in strains of other serotypes [136]. However, *stx2d* is mainly present in LEE-negative strains which are significantly associated with the development of bloody diarrhoea and HUS [137]. The group of O'Brien has published several studies deciphering how mucus increases the toxic activity of Stx2d on Gb3-expressing cells. They established that elastase present in mucus was responsible for the activation of Stx2d via cleavage of the toxin A subunit [138]. This event is determined not only by the presence of a sequence called "activatable tail" in the C-terminal part of the A2 subunit but also by the B pentamer associated with the A subunit [136,139]. Once activated, Stx2d shows a higher capacity to bind its receptor Gb3, leading to a higher toxicity towards target cells [140]. Taken together, these works highlight mucus as a signal sensed by EHEC in order to induce Stx2d production when reaching the gut epithelium.

3.3. Effect of gut Microbiota Metabolites

3.3.1. Short Chain Fatty Acids (SCFAs)

As previously mentioned, the human GIT is a complex microenvironment containing a variety of substances, many of which are metabolic products from resident bacteria. These substances include a variety of SCFAs [141], which are the end products of fermentation of dietary fibres. Most bacterial activity occurs in the proximal colon, where substrate availability is highest.

SCFAs consist of one to six carbon units, of which acetate (C2), propionate (C3), and butyrate (C4) are the most abundant ($\geq 95\%$) [142]. The Bacteroidetes phylum mainly produces acetate and propionate, whereas the Firmicutes phylum releases butyrate as primary metabolic end products. SCFA compositions and concentrations vary according to the segment of the intestine, from the ileum

to the colon, as well as the type and amount of fibres in the diet [142]. The time after ingestion also has an effect, as SCFAs are absorbed rapidly.

3.3.2. Effect of SCFAs on EHEC Survival/Physiological State

In general, SCFAs seem to enhance EHEC colonization by providing a substrate that can be fermented by EHEC in the large intestine [141]. Zumbun and colleagues showed that mice fed a high fibre diet (with high levels of butyrate) exhibited a 10- to 100-fold increase in EHEC O157:H7 colonization [120]. However, EHEC colonization was affected by SCFA composition and concentrations [143], as well as by oxygen levels in the intestinal tract in which the effects were evaluated.

3.3.3. Effect of SCFAs on EHEC Virulence

Motility

Under aerobic conditions, the presence of SCFAs activated the flagellar gene regulatory cascade and enhanced motility in EHEC [119]. The activation of flagellar genes was achieved via a response of two of three regulatory steps for flagellar genes. The class I pathway involves *flhDC* regulatory genes via the leucine-responsive regulatory protein (Lrp) and is activated by butyrate. Moreover, butyrate, acetate and propionate can activate class II regulation of flagellar genes by acting on genes downstream of *flhDC* and independently of *flhDC* activation [119]. In addition to flagellar synthesis, Lrp also regulates LEE virulence gene expression [144], and Tobe and colleagues reported induction of flagellar and LEE genes by SCFAs in the intestine. The simultaneous activation of motility and adhesion appears contradictory. Whereas most adherent bacteria harbour flagella at the initial stage after growth in the presence of SCFAs, flagellar expression is switched off during microcolony formation [144]. This might be due to the inhibitory effect of the LEE, which is also activated by butyrate.

SCFA levels are lowest in the small intestine and increase in the large intestine. It has been hypothesized that EHEC activates flagellar production and motility when encountering rising concentrations of SCFAs in the small intestine, whereas, in the colon, elevated SCFA levels provide sufficient butyrate to induce LEE gene expression [144] and repress flagellar synthesis. Lackraj and colleagues supported this model by showing a significant induction or repression of flagellin expression and motility in EHEC exposed to mixtures of SCFAs representative of the small intestine and colon, respectively [145]. This agrees with the large intestine being considered the preferred EHEC colonization niche, and once reached, the transit mediated by motility factors is interrupted by a switch from the swimming motile phenotype to host adhesion.

Other studies reported that acetate, propionate, or combinations of both, reduced EHEC O157:H7 motility under anaerobic conditions [146]. Interestingly, combinations of lactate and acetate had the same effect, but resulted in an increase in motility under aerobic conditions [89]. This suggests that not only the presence of SCFAs but a combination of intestinal environmental factors, play a role in the regulation of EHEC motility.

Adhesion

Simulation of SCFA concentrations found in the human colon induced expression of the gene *iha*, which encodes an adherence-conferring outer membrane protein of pathogenic *E. coli* [141]. However, these studies were conducted under shaking aerobic conditions. When the assay was carried out in a 5% CO₂ atmosphere [145], closer to the oxygen concentration in the intestinal lumen, no significant changes or down-regulation of *iha* expression was observed.

As mentioned in Section 3.1.3, butyrate can up-regulate LEE gene expression in EHEC, favouring adhesion by enhancing the expression of the intimate attachment T3SS and effector proteins [104]. In the proposed model, the concentration of SCFAs produced by the gut microbiota gradually increases toward the large intestine, where butyrate levels are highest, and cause the corresponding increase in expression of LEE and associated genes prepares EHEC for adherence [104,144]. Once EHEC reach the

surfaces of epithelial cells and establish initial attachment, the production of flagella is turned off as explained before, because they are no longer needed in the infection process. In fact, flagella at this stage would be an impediment to successful infection, since flagellin is a strong agent in inducing a host pro-inflammatory response.

Iron Uptake

As mentioned above, SCFAs stimulate *iha* gene expression in EHEC [141]. Interestingly, Iha from UPEC strain UCB34 functions as a catecholate siderophore receptor when cloned in *E. coli* K-12 [147]. Additionally, *iha* expression is repressed in the presence of iron via the ferric-uptake regulator protein Fur [148]. This data suggests that SCFAs could enhance iron uptake by EHEC, but this needs further investigations.

Production and Toxicity of Stx

While the effect of SCFAs on Stx phage infection and induction has not been investigated, propionate or acetate produced by the anaerobic intestinal bacterium *B. thetaiotaomicron* did not significantly affect Stx production [149]. Other studies showed that acetate produced by *Bifidobacterium* protected mice against EHEC O157:H7 infection by inhibiting Stx translocation from the gut lumen into the bloodstream [119]. Despite a lack of evidence of a direct effect of SCFAs on Stx production, high concentrations of butyrate as a consequence of a fibre-rich diet increase EHEC colonization (see above), which in turn enhances the amount of Stx produced [120].

Butyrate has a profound effect on cell morphology and function, acting as a primary energy source for colonocytes, and increasing Gb3 expression in endothelial cells. Butyrate and other SCFAs produced in the large bowel are rapidly absorbed, transported to the liver via the portal vein, and then circulated through the body to the kidneys [150]. The kidney naturally expresses high levels of Gb3, which can be further increased by butyrate resulting in enhanced Stx sensitivity and cytotoxic damage [120,150]. High levels of butyrate could therefore pose a risk by increasing the susceptibility to Stx observed in both the intestine and kidney.

3.4. Role of Nitric Oxide

3.4.1. Nitric Oxide in the Gut

Nitric oxide (NO) is a simple gaseous molecule that participates in a vast number of physiological processes, including vasodilatation and nerve transmission, in almost all organs of the human body. Focusing on gut physiology, NO is critical for GI motility [151] and plays a key role in the immune response to bacterial, viral, fungal and parasitic infections [152,153].

3.4.2. NO Detoxification

NO is produced from L-arginine by NO synthase enzymes (NOS) expressed in many types of cells including immune cells as well as epithelial and endothelial cells. As a highly reactive free radical, NO can react with a large spectrum of molecules such as inorganic elements, DNA, proteins and lipids, thereby resulting in strong antimicrobial activity [154]. *Enterobacteriaceae* and in particular *E. coli* possess several resistance mechanisms against exogenous NO released by the mammalian host. Four NO detoxification pathways have been characterized in *E. coli* so far. These are mediated by the flavohaemoglobin HmpA [155], the flavorubredoxin NorV [156], the hybrid cluster protein Hcp-Hcr, and the nitrite reductases NrfA and NirB [157,158]. All enzymes use NO or NO derivatives as a substrate, thus allowing *E. coli* to resist NO cytotoxic effects. In EHEC, the contribution of the *norVW* operon to NO resistance has been investigated in more detail.

Initially, it has been observed that O157:H7 strains associated with a higher risk for the development of HUS possess an intact *norV* gene while a gene having a 204 bp deletion was detected in less virulent O157 strains, thus yielding an inactive form of the NO reductase NorV [159,160].

However, a more recent epidemiological study comparing O157:H7 strains isolated from HUS patients or asymptomatic carriers does not confirm a positive correlation between the presence of an intact *norV* gene and the disease severity [161]. Nonetheless, Shimizu and colleagues demonstrated that O157:H7 strains carrying an intact *norV* gene were protected from NO-mediated growth inhibition under anaerobic conditions [162]. Moreover, these strains exhibited higher survival within macrophages compared to *norVs*-type EHEC strains having the truncated form of *norV* suggesting that the flavorubredoxin has a role in EHEC pathogenesis.

3.4.3. Effect of NO on EHEC Virulence

Adhesion

NO inhibits EHEC adherence to epithelial cells cultured *in vitro*. In particular, it has been shown that the NO-sensing regulatory protein (NsrR) is a direct activator of LEE1, LEE4 and LEE5 operons and that the presence of NO decreases the expression of the T3SS [163]. Such anti-adhesive properties of NO have been confirmed *in vivo* as EHEC-infected mice treated with an NO synthase inhibitor demonstrated enhanced EHEC colonic mucosal colonization compared with untreated mice (G. Jubelin, unpublished results). Notably, NO also affects other adhesion-associated processes such as enhanced dispersal of O157:H7 biofilms on abiotic surfaces [164].

Production of Stx

Vareille and colleagues demonstrated that sub-inhibitory concentrations of NO derived from chemical or cellular sources decreased Stx2 synthesis via NsrR [165]. In contrast, other authors reported that NO enhanced the production of Stx1 and Stx2 during EHEC O157 growth under anaerobic conditions [166].

Other EHEC virulence determinants are probably also affected by NO since they are controlled by regulatory proteins with iron-sulfur clusters that are well known to react very efficiently with NO [167,168]. If NO clearly interferes with EHEC virulence as previously described, the pathogen is able, in turn, to modulate the level of NO produced by epithelial cells. Vareille and colleagues showed that EHEC, in contrast to commensal or K12 strains, down-regulates NO production in IFN- γ induced human enterocytes cultured *in vitro*, thus limiting the detrimental impact of NO on virulence [169]. It is tempting to speculate that the level of NO produced as a biological output from the interplay between EHEC and the host might play a key role to determine the outcome of the infection.

3.5. Role of Ethanolamine

3.5.1. Metabolism of Ethanolamine in the Gut

The GIT of mammals provides a rich and natural source of ethanolamine [170]. Indeed, ethanolamine arises from the digestion of phosphatidylethanolamine by bacterial phosphodiesterases [171]. After phosphatidylcholine, phosphatidylethanolamine is the most abundant phospholipid in cell membranes of animals and plants [172,173]. The utilisation of ethanolamine was investigated very early in *E. coli* where it was shown to involve a key coenzyme vitamin B₁₂-dependent ethanolamine ammonia-lyase [174,175]. Actually, the metabolic pathway for degradation and utilisation of ethanolamine is encoded by an operon of 17 genes called *eut* (ethanolamine utilisation) where the ethanolamine ammonia-lyase is encoded by *eutBC* [176]. The ethanolamine ammonia-lyase is the first enzyme of this catabolic pathway which converts ethanolamine to acetaldehyde in the presence of cofactor vitamin B₁₂ (cobalamin). From there, acetaldehyde can be converted to (i) ethanol by the alcohol dehydrogenase EutG, or (ii) acetyl-CoA by the acetyl dehydrogenase EutE before joining the tricarboxylic cycle (TCA) [176]. Alternatively, the phosphotransacetylase EutD can convert acetyl-CoA to acetyl-phosphate and ultimately to acetate by the acetate kinases EutP and EutQ [177]. In addition to regulators, several other proteins encoded by the *eut* operon (EutK, L, M, N, and S) participate

in the formation of a bacterial micro-compartment dedicated to the catabolism of the ethanolamine, the ethanolamine metabolosome [178].

3.5.2. Effect of Ethanolamine on EHEC Fitness

While ethanolamine is considered a valuable carbon and nitrogen source for bacteria [179,180], EHEC O157:H7 can only use ethanolamine as a nitrogen source [181]. While ethanolamine was poorly used by the endogenous intestinal microbiota, ethanolamine utilisation conferred a competitive advantage to EHEC O157:H7 in bovine intestinal contents [181]. Nonetheless, genes encoding components of ethanolamine metabolism have been identified in several bacterial genomes, including numerous species of the family *Enterobacteriaceae*, including α -proteobacteria, β -proteobacteria, δ -proteobacteria and γ -proteobacteria, and also in some other phyla, such as Firmicutes, Actinobacteria, Acidobacteria, Fusobacteria or Chlorophlexi [182]. This suggests that some kind of competition could occur between EHEC and other species of the gut ecosystem, which would require further investigations to comprehend the metabolic flux of ethanolamine in the different biotopes and communities encountered along the GIT.

While EHEC O157:H7 specifically binds to phosphatidylethanolamine, it cannot associate with the two other major phospholipids present in the epithelial cell membrane, phosphatidylserine or phosphatidylcholine [183,184]. As such, the specific recognition of the ethanolamine residue present in the hydrophilic head of some phospholipids could contribute to the colonization of the GIT by EHEC.

3.5.3. Effect of Ethanolamine on EHEC Virulence

In EHEC O157:H7, ethanolamine was further shown to regulate the expression of virulence factors [185]. In particular, it acts as a signalling molecule and activates the expression of the LEE and *stx*. This regulation of virulence gene expression occurs independently of ethanolamine metabolism.

3.6. Interactions with Host Hormones

3.6.1. Microbial Endocrinology

Microbial endocrinology is an emerging field aiming at comprehending the influence of hormones on the pathogenesis of infectious disease [186,187]. In the GIT, intestinal epithelial cells produce neurochemicals such as the catecholamine dopamine [188]. Catecholamines derive from phenylalanine or tyrosine and are formed around a benzene ring with two adjacent hydroxyl groups and an opposing amine side chain [186]. From the metabolic intermediate dopamine, different hormones can be formed such as adrenaline and noradrenaline (also called epinephrine and norepinephrine, respectively). The effect of these two hormones on EHEC survival and virulence is described below (Section 3.6.2).

3.6.2. Effect of Host Hormones on EHEC Survival and Virulence

Survival

It has been shown that noradrenaline, adrenaline and dopamine can increase the growth of several commensal *E. coli* strains, as well as EHEC O157:H7 [189–192]. While originally observed in vitro in lab cultures, this effect was further confirmed in vivo using a murine model [193].

Adhesion

In vitro studies demonstrated that noradrenaline and adrenaline activate the T3SS in EHEC O157:H7 [110]. This was confirmed in a bovine ligated ileal loop model of infection where noradrenaline augmented EHEC O157:H7 adherence to intestinal mucosa and associated intestinal inflammation dependent on the ability of the pathogen to form A/E lesions [194]. In contrast, using Ussing chambers, noradrenaline promoted caecal adherence of EHEC O157:H7 strains defective in intimate mucosal attachment in mice [195]. In addition, significant enhancement of luminal

attachment of EHEC O157:H7 to the colon through interactions with mucosal α -adrenoceptors and melanocortin receptors was also observed upon contraluminal application of noradrenaline [195,196]. While other intestinal hormones such as gastrin, galanin, and secretin did not influence LEE expression, their implication in the regulation of other bacterial physiological functions cannot be completely excluded. Lastly, in enterotoxigenic *E. coli* (ETEC) and commensal *E. coli* strains, noradrenaline increased the expression of pili involved in bacterial adhesion and biofilm formation to biotic and abiotic surfaces [190,197].

Iron Uptake and Stx Production

In addition to adhesion, noradrenaline induces the expression of the siderophore enterobactin as well as iron uptake [198–200], and also increases the production of Stx in EHEC O157:H7 [190]. Interestingly, expression of several major EHEC virulence factors including Stx, the T3SS and flagella is activated by a bacterial cell-to-cell signalling mechanism involving the autoinducer AI-2 synthesised by LuxS [109,201]. Previous studies have shown that noradrenaline and adrenaline can interfere with the LuxS/AI-2 system suggesting a potential cross-communication between bacterial and host cell signalling systems [110]. In addition to tyrosine-derived catecholamines, host signalling is mediated by polypeptide and steroid hormones, and much remains to be learned about the potential implications of these different hormones on the regulation of EHEC virulence and physiopathology.

The effect of biotic factors on EHEC virulence is summarized in Figure 3.

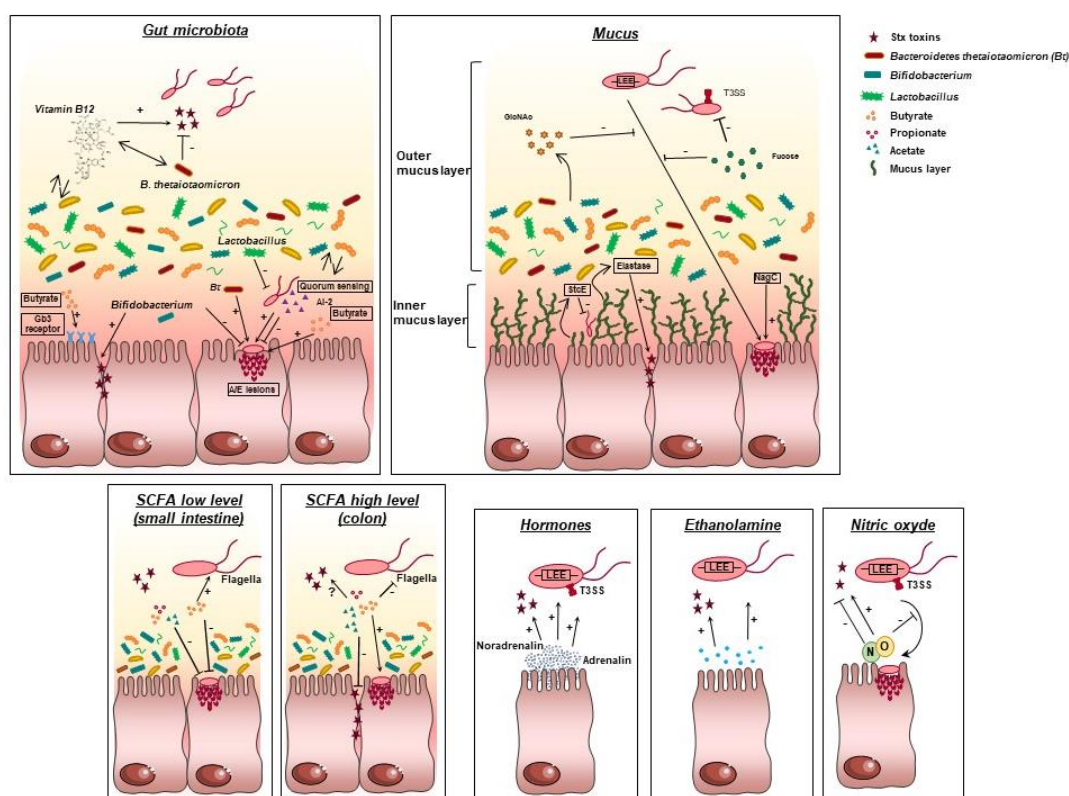


Figure 3. Influence of biotic factors on EHEC virulence. EHEC have evolved several strategies to modulate the expression of their virulence factors in response to biotic factors from the gut microenvironments. Each panel represents the interactions of EHEC with one biotic factor. Bt: *Bacteroidetes thetaiotaomicron*, LEE: Locus of Enterocytes Effacement, NagC: N-acetylglucosamine sensor, SCFA: Short Chain Fatty Acids, Gb3: globotriaosylceramide, T3SS: Type III secretion system, StcE: metalloprotease, arrow with the sign + represents an activation process, bolded line with the sign – represents repression, ? indicates contradictory results.

4. Application of Dynamic Human Gut Models to Address Knowledge Gaps in EHEC Physiopathology

4.1. Limitation of Current Approaches

To be fully pathogenic, bacteria must not only survive in the human GIT but also coordinate expression of virulence determinants in response to localized gut microenvironments. As reviewed in this article, an increasing number of *in vitro* and *in vivo* studies have shown that EHEC can adapt to various environments found in the gut by detecting cues from the host or its resident microbiota. These cues are extremely diverse in nature, including biological, chemical, hormonal and mechanical signals, and can influence both pathogen survival and virulence. As illustrated in this review, most EHEC virulence genes are highly controlled by one or several of these environmental signals, and we are just starting to understand how the pathogen uses these cues in order to temporally and spatially coordinate/fine-tune virulence gene expression in the gut.

Despite obvious scientific progress in this area, the data obtained until now still show gaps and even some inconsistencies. Most of the models used are undoubtedly very useful to dissect specific mechanisms but do not reproduce human GI physiology. There are clear anatomical, biochemical, metabolic, and microbial differences between the GIT of mice and that of humans, and most *in vitro* studies performed have used oversimplified models reproducing only one digestive parameter at a time (e.g., acid pH, bile or SCFA). Therefore, integration and sequential delivery of GI signals is needed to model the dynamics and complexity of the human gut more closely. In particular, simulation of gastric pH drop, dynamics of digestive compartment emptying and real GI transit time, sequential delivery of digestive secretions and bile, and reproduction of a highly complex gut microbiota from human origin, are some of the key parameters required to strengthen the conclusion of the studies described in this review (see Section 2.1 for gastric pH, Section 2.2 for bile salts, Section 3.1 for gut microbiota and Section 3.3 for SCFA).

4.2. Main Dynamic Gut Models

As EHEC volunteer studies are ethically prohibited, an alternative to mimic human digestive physiology is the use of bio-regionalised and dynamic artificial digestive systems which reproduce the successive environmental niches of the human gut. Despite the large number of gut models available, only a small fraction combines dynamism and multi-compartmentalisation. Among them, the TIM (TNO gastrointestinal Model) [202,203] and the SHIME (Simulator of the Human Intestinal Microbial Ecosystem) [204,205] are particularly relevant as they benefit from more than 20 years of use and validation by *in vitro*/*in vivo* correlation studies, especially in the field of microbiology (but also for nutritional or toxicological applications). The TIM is currently the most complete simulator of the human upper GIT and consists of four compartments representing the stomach and the three parts of the small intestine (duodenum, jejunum and ileum). The TIM system addresses major physicochemical parameters of digestion including body temperature, temporal and longitudinal changes in gastric and intestinal pH, dynamism of chyme transit and mixing, sequential delivery of gastric (lipase, pepsin) and intestinal (pancreatic juice and bile) secretions and passive absorption of small molecules and water. Similarly, the SHIME is a multi-step fermentation model with five bioreactors that includes all compartments from the stomach to the colon (stomach, small intestine, ascending, transverse and descending colon). The bioreactors are maintained anaerobically by gassing with nitrogen and inoculated with fresh faecal samples from human volunteers. After a suitable adaptation period of the microbiota to the *in vitro* environmental conditions, the bioreactors run under continuously controlled conditions including pH, temperature, residence time, pressure, redox potential, agitation and nutrient availability. By incorporating mucin-covered agar beads in the colonic compartments, the SHIME model has been recently optimized (M-SHIME) to support establishment of the mucosal microbiota which fundamentally differs from the luminal community of resident bacteria [206]. TIM and SHIME emerge as a relevant alternative to *in vivo* assays, especially in relation with the study of foodborne pathogens such as EHEC.

4.3. Potential of Dynamic Gut Models in EHEC Studies: First Proofs

Dynamic gut models could be advantageously used to assess the effect of GI passage on EHEC survival and virulence in a temporal-spatial fashion (Tables 1 and 2).

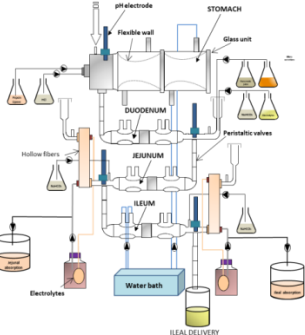
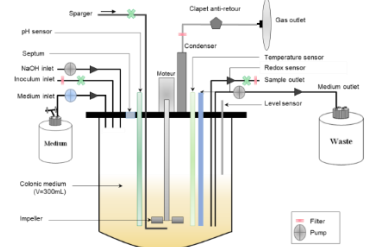
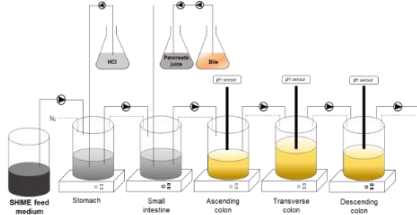
4.3.1. Survival

Up to now, there is no clear data on how EHEC can survive after ingestion throughout the human GIT and which parameters influence this survival. Recent studies in the TIM and ARCOL (a single-step dynamic model of the human colon) models have allowed to provide such information for EHEC O157:H7. In the TIM, the survival of O157:H7 strain EDL933 was reduced in the stomach and duodenum, while bacterial growth was observed at the end of digestion in the jejunum and ileum [207]. This growth renewal in the distal parts of the small intestine was probably linked to the presence of less stringent conditions, such as neutral pH and lower concentrations of bile salts due to their reabsorption in the distal parts of the small intestine. Additional studies performed in ARCOL indicated that EHEC was not able to persist in colonic compartments [208,209] suggesting that EHEC colonization of the colon during human infection may be rather linked to growth renewal of the pathogen in the distal small intestine than its ability to maintain growth in the colon. Further studies in the TIM model have demonstrated enhanced survival of EHEC O26:11 in the human simulated upper GIT after ingestion via raw milk cheese compared with EHEC O157:H7 [210]. In addition, increased numbers of EHEC O157:H7 were recovered from the distal small intestine in vitro under infant digestive conditions compared with adult ones [211].

4.3.2. Virulence

Initial results have also been obtained in relation to temporal/spatial regulation of EHEC O157:H7 virulence genes in the in vitro gut. Under adult conditions, both *stx1* and *stx2* were highly expressed in the ileal effluents of the TIM model and in the colonic compartment of ARCOL (until 12h post-infection), but not in the gastric compartment, in accordance with the main site of EHEC colonization in the terminal ileum and colon [208,211]. Interestingly, *stx1* and *stx2* expression in O157:H7 was significantly enhanced under infant digestive conditions versus adult ones in the TIM model, resulting in a higher amount of Stx produced in the ileal effluents [211]. These results combined with those previously mentioned (Section 4.3 paragraph survival) for survival indicate that age-related differences in digestive physicochemical parameters may partly explain the higher susceptibility of young children to EHEC infection and HUS. Notably, expression of the adhesins intimin gene *eae* and *lpf* was also activated in the TIM model during transit through the stomach and small intestine, despite the absence of epithelial cells [211,212]. In contrast, *eae* but not *lpf* was overexpressed in the colonic ARCOL model until 9h post-infection, suggesting that further studies are required to decipher the complex regulation of the EHEC adhesion process along the gut.

Table 1. Description of the main dynamic in vitro models of the human gut used to address EHEC physiopathology.

Models	TIM-1	ARCOL	SHIME
<p>Main features</p>	 <p>[202,203]</p>	 <p>[202,208,209]</p>	 <p>[204,205]</p>
<p>Applications of dynamic models in EHEC studies</p>	<ul style="list-style-type: none"> • Survival of EHEC O157:H7 [207] • Survival of EHEC O26:H11 [210] • Regulation of <i>stx</i>, <i>lpf</i> and <i>eae</i> genes in the upper GIT [211,212] • Impact of age (infant versus adult) on EHEC survival and virulence [211] • Effect of probiotic yeasts on O157:H7 survival [207] 	<ul style="list-style-type: none"> • Survival of EHEC O157:H7 [208,209] • Regulation of <i>stx</i> and <i>eae</i> genes [208] • Impact of O157:H7 on gut microbiota composition (qPCR) and activity (AGCC) [208,209] • Donor effect (3 different donors) [208] • Effect of probiotic yeasts on O157:H7 survival and virulence [208,209] 	
<p>Perspectives</p>	<ul style="list-style-type: none"> • Stx phages and EHEC fitness • Effect of anti-infectious agents on EHEC survival and virulence (e.g., probiotics) • Impact of food matrix • Impact of strain/serotype and dose • Integrate the mucosal environment • Integrate age-related parameters (elderly people) • Integrate the host response • => Combination with epithelial cells [213] 	<ul style="list-style-type: none"> • Increase the cohort of volunteers • Use global approach for analyses of gut microbiota composition and functionality, and for analysis of EHEC virulence • Effect of anti-infectious agents on EHEC survival and virulence (e.g., pro- and prebiotics) • Integrate age-related parameters (infant) • Integrate the mucosal environment • Reproduce pathological conditions (HUS) 	<ul style="list-style-type: none"> • Investigate the interactions between EHEC and luminal/mucosal microbiota => M-SHIME [206] • Integrate the host response and evaluate the effect of microaerobiosis and fluid shear => HMI [214] • Integrate age-related parameters (infant, elderly) • Reproduce pathological conditions (HUS) • Effect of anti-infectious agents on EHEC survival and virulence (e.g., probiotics, prebiotics . . .)

4.3.3. Interaction with the Gut Microbiota

Up to date, all studies investigating the interactions between EHEC and the gut microbiota have been carried out using isolated commensal strains or complex microbiota from mice but not from human origin (only media conditioned by human microbiota). The only study investigating the interactions of EHEC with a complex human gut microbiota under physiologically relevant colonic conditions (e.g., pH, residence time, supply of nutrients found in human diet) was conducted in the ARCOL model using faeces from three different healthy volunteers [208]. While EHEC O157:H7 affected the composition of the colonic microbiota in an individual dependent manner (as assessed by qPCR analysis of the main bacterial communities), no changes in SCFA production were detected. Additional experiments are needed to conclude if differential gut microbiota composition may contribute to host resistance or susceptibility to EHEC infections. Then, differences in diet (as previously shown by Zumbun and colleagues [120], see Section 3.1.3) and antibiotic regimens, which cause shifts in the composition of the GI microbiota may certainly influence the outcome of the disease.

4.4. Potential of Dynamic Models in EHEC Studies: Future Outlooks

As the parameters of dynamic gut models (such as TIM or SHIME) can be adjusted in terms of food-matrix and target group (age-range), we can consider unlimited applications of these systems to assess how serotype/strain, food vehicle, level of contamination (supra-physiological dose or real low infectious dose) or age (infant, adult, elderly) can affect EHEC survival or virulence under human GI conditions. EHEC virulence could be investigated through strategies targeting specific genes as previously described in the TIM model [211,212] or by global approaches such as microarray or RNA-sequencing. Moreover, we could also use the potential of these systems to assess whether Stx phages can improve the ecological fitness of EHEC. Phage induction can be monitored using reporter genes or quantification of Stx phage particles, and Stx transduction to other enterobacteria from the gut microbiota can be followed by using recombinant phages. The gut models also provide an efficient platform for evaluating anti-infectious strategies against EHEC infection, such as Stx-neutralizing antibodies/compounds, phage therapy, probiotics, prebiotics or manipulation of diet [207,208]. Lastly, they constitute a relevant complement to animal studies to decipher the role of the human gut microbiota on EHEC pathogenesis. The results obtained by Thévenot and colleagues [208] should be strengthened by additional experiments using a larger number of volunteers, from different age groups (especially infants), and also HUS patients. Given the effect of intestinal mucus on EHEC fitness and virulence (see Section 3.2), such studies would benefit from the M-SHIME model, which not only integrates the luminal microbiota but also reproduces the mucosal microenvironment. The composition of the luminal and mucosal microbiota can be analyzed by 16S rRNA sequencing and metagenomics, and specific use of nutrients by EHEC (e.g., derived from host mucins) can be determined by stable isotope probing or chemical imaging.

Although dynamic multi-compartmental systems are highly sophisticated, they do not reproduce the immune, nervous or hormonal control of digestion. Therefore, the combination of gut models and cell cultures (e.g., intestinal or immune cells) represents a common approach for integrating in vitro host responses [215,216]. One such model is the Host-Microbiota Interaction (HMI) module [216] which closely mimics the interactions and shear forces occurring at the interface of the mucus and epithelial surface. This HMI module is maintained under micro-aerobic conditions and can be used in combination with commercially available dynamic gut simulators, such as the SHIME system. Given the importance of oxygenation levels and fluid shear forces (see Sections 2.3 and 2.4) on EHEC virulence, the HMI can also contribute to the mechanistic understanding of host, EHEC and microbiota interactions under physiologically relevant GI conditions.

Collectively, the data provided by the dynamic gut models, eventually combined with host cell components, will be essential not only for a full understanding of EHEC pathogenesis but also for setting regulatory standards in the food industry. They will also help identify host factors that influence the competence of the pathogen and help to define biomarkers for host susceptibility.

Table 2. Roles played by in vitro dynamic models to address important questions related to EHEC pathogenesis in the human gut.

Main Questions That Remain to Be Addressed	TIM-1	SHIME
What is the impact of food vehicles on EHEC survival and virulence in the human GIT?	X	
How EHEC phages behave in the human GIT?	X	
Are there some strains or serotypes that better survive than others in the human GIT or produce more toxins?	X	X
Can inter-individual differences in physicochemical or microbial parameters of the human GIT influence EHEC survival or virulence?	X	X
Does EHEC infection affect human gut microbiota and may lead to dysbiosis?		X
How the oxygen level may influence EHEC virulence in presence of a complex gut microbiota?		X

Author Contributions: G.J., M.D., S.S., L.E.-M., M.M. and S.B.-D. wrote the manuscript. L.E.-M. draw the figures and table. S.S., L.E.-M. and S.B.-D. proof-edited the manuscript.

Funding: This research received no external funding.

Conflicts of Interest: The authors declare no conflict of interest.

References

- Karmali, M.A.; Gannon, V.; Sargeant, J.M. Verocytotoxin-producing *Escherichia coli* (VTEC). *Vet. Microbiol.* **2010**, *140*, 360–370. [[CrossRef](#)] [[PubMed](#)]
- Scheiring, J.; Andreoli, S.P.; Zimmerhackl, L.B. Treatment and outcome of shiga-toxin-associated hemolytic uremic syndrome (HUS). *Pediatr. Nephrol.* **2008**, *23*, 1749–1760. [[CrossRef](#)] [[PubMed](#)]
- Karmali, M.A.; Mascarenhas, M.; Shen, S.; Ziebell, K.; Johnson, S.; Reid-Smith, R.; Isaac-Renton, J.; Clark, C.; Rahn, K.; Kaper, J.B. Association of genomic O island 122 of *Escherichia coli* edl 933 with verocytotoxin-producing *Escherichia coli* seropathotypes that are linked to epidemic and/or serious disease. *J. Clin. Microbiol.* **2003**, *41*, 4930–4940. [[CrossRef](#)] [[PubMed](#)]
- Chong, Y.; Fitzhenry, R.; Heuschkel, R.; Torrente, F.; Frankel, G.; Phillips, A.D. Human intestinal tissue tropism in *Escherichia coli* O157:H7—Initial colonization of terminal ileum and peyer’s patches and minimal colonic adhesion ex vivo. *Microbiology* **2007**, *153*, 794–802. [[CrossRef](#)] [[PubMed](#)]
- Lewis, S.B.; Cook, V.; Tighe, R.; Schüller, S. Enterohemorrhagic *Escherichia coli* colonization of human colonic epithelium in vitro and ex vivo. *Infect. Immun.* **2015**, *83*, 942–949. [[CrossRef](#)] [[PubMed](#)]
- Phillips, A.D.; Navabpour, S.; Hicks, S.; Dougan, G.; Wallis, T.; Frankel, G. Enterohaemorrhagic *Escherichia coli* O157:H7 target peyer’s patches in humans and cause attaching/effacing lesions in both human and bovine intestine. *Gut* **2000**, *47*, 377–381. [[CrossRef](#)] [[PubMed](#)]
- Stevens, M.P.; Frankel, G.M. The locus of enterocyte effacement and associated virulence factors of enterohemorrhagic *Escherichia coli*. *Microbiol. Spectr.* **2014**, *2*, EHEC-0007. [[CrossRef](#)] [[PubMed](#)]
- McWilliams, B.D.; Torres, A.G. Enterohemorrhagic *Escherichia coli* adhesins. *Microbiol. Spectr.* **2014**, *2*. [[CrossRef](#)] [[PubMed](#)]
- Yu, A.C.Y.; Worrall, L.J.; Strynadka, N.C.J. Structural insight into the bacterial mucinase StcE essential to adhesion and immune evasion during enterohemorrhagic *E. coli* infection. *Structure* **2012**, *20*, 707–717. [[CrossRef](#)] [[PubMed](#)]
- Schuller, S. Shiga toxin interaction with human intestinal epithelium. *Toxins* **2011**, *3*, 626–639. [[CrossRef](#)] [[PubMed](#)]
- Bergan, J.; Dyve Lingelem, A.B.; Simm, R.; Skotland, T.; Sandvig, K. Shiga toxins. *Toxicon* **2012**, *60*, 1085–1107. [[CrossRef](#)] [[PubMed](#)]
- Wagner, P.L.; Waldor, M.K. Bacteriophage control of bacterial virulence. *Infect. Immun.* **2002**, *70*, 3985–3993. [[CrossRef](#)] [[PubMed](#)]
- Pacheco, A.R.; Sperandio, V. Shiga toxin in enterohemorrhagic *E. coli*: Regulation and novel anti-virulence strategies. *Front. Cell. Infect. Microbiol.* **2012**, *2*, 81. [[CrossRef](#)] [[PubMed](#)]

14. Barnett Foster, D. Modulation of the enterohemorrhagic *E. coli* virulence program through the human gastrointestinal tract. *Virulence* **2013**, *4*, 315–323. [[CrossRef](#)] [[PubMed](#)]
15. Fallingborg, J. Intraluminal pH of the human gastrointestinal tract. *Dan. Med. Bull.* **1999**, *46*, 183–196. [[PubMed](#)]
16. Neidhardt, F.C.; Ingraham, J.L.; Schaechter, M. *Physiology of the Bacterial Cell: A Molecular Approach*; Sinauer Associates Inc.: Sunderland, MA, USA, 1990.
17. Putnam, R.W.; Roos, A. Intracellular pH. In *Comprehensive Physiology*; Terjung, R., Ed.; Wiley: Hoboken, NJ, USA, 2011.
18. Benjamin, M.M.; Datta, A.R. Acid tolerance of enterohemorrhagic *Escherichia coli*. *Appl. Environ. Microbiol.* **1995**, *61*, 1669–1672. [[PubMed](#)]
19. Lajhar, S.A.; Brownlie, J.; Barlow, R. Survival capabilities of *Escherichia coli* O26 isolated from cattle and clinical sources in australia to disinfectants, acids and antimicrobials. *BMC Microbiol.* **2017**, *17*, 47. [[CrossRef](#)] [[PubMed](#)]
20. Lin, J.; Smith, M.P.; Chapin, K.C.; Baik, H.S.; Bennett, G.N.; Foster, J.W. Mechanisms of acid resistance in enterohemorrhagic *Escherichia coli*. *Appl. Environ. Microbiol.* **1996**, *62*, 3094–3100. [[PubMed](#)]
21. King, T.; Lucchini, S.; Hinton, J.C.; Gobius, K. Transcriptomic analysis of *Escherichia coli* O157:H7 and K-12 cultures exposed to inorganic and organic acids in stationary phase reveals acidulant- and strain-specific acid tolerance responses. *Appl. Environ. Microbiol.* **2010**, *76*, 6514–6528. [[CrossRef](#)] [[PubMed](#)]
22. House, B.; Kus, J.V.; Prayitno, N.; Mair, R.; Que, L.; Chingcuanco, F.; Gannon, V.; Cvitkovitch, D.G.; Barnett Foster, D. Acid-stress-induced changes in enterohaemorrhagic *Escherichia coli* O157:H7 virulence. *Microbiology* **2009**, *155*, 2907–2918. [[CrossRef](#)] [[PubMed](#)]
23. Yuk, H.-G.; Marshall, D.L. Adaptation of *Escherichia coli* O157:H7 to pH alters membrane lipid composition, verotoxin secretion, and resistance to simulated gastric fluid acid. *Appl. Environ. Microbiol.* **2004**, *70*, 3500–3505. [[CrossRef](#)] [[PubMed](#)]
24. Imamovic, L.; Muniesa, M. Characterizing reca-independent induction of shiga toxin2-encoding phages by EDTA treatment. *PLoS ONE* **2012**, *7*, e32393. [[CrossRef](#)] [[PubMed](#)]
25. Hersh, B.M.; Farooq, F.T.; Barstad, D.N.; Blankenhorn, D.L.; Slonczewski, J.L. A glutamate-dependent acid resistance gene in *Escherichia coli*. *J. Bacteriol.* **1996**, *178*, 3978–3981. [[CrossRef](#)] [[PubMed](#)]
26. Zhao, B.; Houry, W.A. Acid stress response in enteropathogenic gammaproteobacteria: An aptitude for survival. *Biochem. Cell Biol.* **2010**, *88*, 301–314. [[CrossRef](#)] [[PubMed](#)]
27. Chung, H.J.; Bang, W.; Drake, M.A. Stress response of *Escherichia coli*. *Compr. Rev. Food Sci. Food Saf.* **2006**, *5*, 52–64. [[CrossRef](#)]
28. Gajiwala, K.S.; Burley, S.K. Hdea, a periplasmic protein that supports acid resistance in pathogenic enteric bacteria. *J. Mol. Biol.* **2000**, *295*, 605–612. [[CrossRef](#)] [[PubMed](#)]
29. Veses-Garcia, M.; Liu, X.; Rigden, D.J.; Kenny, J.G.; McCarthy, A.J.; Allison, H.E. Transcriptomic analysis of shiga-toxigenic bacteriophage carriage reveals a profound regulatory effect on acid resistance in *Escherichia coli*. *Appl. Environ. Microbiol.* **2015**, *81*, 8118–8125. [[CrossRef](#)] [[PubMed](#)]
30. Maurer, L.M.; Yohannes, E.; Bondurant, S.S.; Radmacher, M.; Slonczewski, J.L. pH regulates genes for flagellar motility, catabolism, and oxidative stress in *Escherichia coli* K-12. *J. Bacteriol.* **2005**, *187*, 304–319. [[CrossRef](#)] [[PubMed](#)]
31. Kihara, M.; Macnab, R.M. Cytoplasmic pH mediates pH taxis and weak-acid repellent taxis of bacteria. *J. Bacteriol.* **1981**, *145*, 1209–1221. [[PubMed](#)]
32. Minamino, T.; Imae, Y.; Oosawa, F.; Kobayashi, Y.; Oosawa, K. Effect of intracellular pH on rotational speed of bacterial flagellar motors. *J. Bacteriol.* **2003**, *185*, 1190–1194. [[CrossRef](#)] [[PubMed](#)]
33. Arenas-Hernandez, M.M.; Rojas-Lopez, M.; Medrano-Lopez, A.; Nunez-Reza, K.J.; Puente, J.L.; Martinez-Laguna, Y.; Torres, A.G. Environmental regulation of the long polar fimbriae 2 of enterohemorrhagic *Escherichia coli* O157:H7. *FEMS Microbiol. Lett.* **2014**, *357*, 105–114. [[PubMed](#)]
34. Audia, J.P.; Webb, C.C.; Foster, J.W. Breaking through the acid barrier: An orchestrated response to proton stress by enteric bacteria. *Int. J. Med. Microbiol.* **2001**, *291*, 97–106. [[CrossRef](#)] [[PubMed](#)]
35. Little, J.W. Autodigestion of LexA and phage lambda repressors. *Proc. Natl. Acad. Sci. USA* **1984**, *81*, 1375–1379. [[CrossRef](#)] [[PubMed](#)]
36. Schuldiner, S.; Agmon, V.; Brandsma, J.; Cohen, A.; Friedman, E.; Padan, E. Induction of SOS functions by alkaline intracellular pH in *Escherichia coli*. *J. Bacteriol.* **1986**, *168*, 936–939. [[CrossRef](#)] [[PubMed](#)]

37. Livny, J.; Friedman, D.I. Characterizing spontaneous induction of Stx encoding phages using a selectable reporter system. *Mol. Microbiol.* **2004**, *51*, 1691–1704. [[CrossRef](#)] [[PubMed](#)]
38. Allue-Guardia, A.; Martinez-Castillo, A.; Muniesa, M. Persistence of infectious Shiga toxin-encoding bacteriophages after disinfection treatments. *Appl. Environ. Microbiol.* **2014**, *80*, 2142–2149. [[CrossRef](#)] [[PubMed](#)]
39. Imamovic, L.; Jofre, J.; Schmidt, H.; Serra-Moreno, R.; Muniesa, M. Phage-mediated Shiga toxin 2 gene transfer in food and water. *Appl. Environ. Microbiol.* **2009**, *75*, 1764–1768. [[CrossRef](#)] [[PubMed](#)]
40. Jonczyk, E.; Klak, M.; Miedzybrodzki, R.; Gorski, A. The influence of external factors on bacteriophages—Review. *Folia Microbiol.* **2011**, *56*, 191–200. [[CrossRef](#)] [[PubMed](#)]
41. Kerby, G.P.; Gowdy, R.A.; Dillon, E.S.; Dillon, M.L.; Csáky, T.Z.; Sharp, D.G.; Beard, J.W. Purification pH stability and sedimentation properties of the t7 bacteriophage of *Escherichia coli*. *J. Immunol.* **1949**, *63*, 93–107. [[PubMed](#)]
42. Langlet, J.; Gaboriaud, F.; Gantzer, C. Effects of pH on plaque forming unit counts and aggregation of ms2 bacteriophage. *J. Appl. Microbiol.* **2007**, *103*, 1632–1638. [[CrossRef](#)] [[PubMed](#)]
43. Asahara, T.; Shimizu, K.; Nomoto, K.; Hamabata, T.; Ozawa, A.; Takeda, Y. Probiotic bifidobacteria protect mice from lethal infection with Shiga toxin-producing *Escherichia coli* O157:H7. *Infect. Immun.* **2004**, *72*, 2240–2247. [[CrossRef](#)] [[PubMed](#)]
44. Duffy, L.L.; Grau, F.H.; Vanderlinde, P.B. Acid resistance of enterohaemorrhagic and generic *Escherichia coli* associated with foodborne disease and meat. *Int. J. Food Microbiol.* **2000**, *60*, 83–89. [[CrossRef](#)]
45. Gunn, J.S. Mechanisms of bacterial resistance and response to bile. *Microbes Infect.* **2000**, *2*, 907–913. [[CrossRef](#)]
46. Hamner, S.; McInnerney, K.; Williamson, K.; Franklin, M.J.; Ford, T.E. Bile salts affect expression of *Escherichia coli* O157:H7 genes for virulence and iron acquisition, and promote growth under iron limiting conditions. *PLoS ONE* **2013**, *8*, e74647. [[CrossRef](#)] [[PubMed](#)]
47. Begley, M.; Gahan, C.G.; Hill, C. The interaction between bacteria and bile. *FEMS Microbiol. Rev.* **2005**, *29*, 625–651. [[CrossRef](#)] [[PubMed](#)]
48. Kandell, R.L.; Bernstein, C. Bile salt/acid induction of DNA damage in bacterial and mammalian cells: Implications for colon cancer. *Nutr. Cancer* **1991**, *16*, 227–238. [[CrossRef](#)] [[PubMed](#)]
49. Bernstein, H.; Payne, C.M.; Bernstein, C.; Schneider, J.; Beard, S.E.; Crowley, C.L. Activation of the promoters of genes associated with DNA damage, oxidative stress, er stress and protein misfolding by the bile salt, deoxycholate. *Toxicol. Lett.* **1999**, *108*, 37–46. [[CrossRef](#)]
50. Thanassi, D.G.; Cheng, L.W.; Nikaido, H. Active efflux of bile salts by *Escherichia coli*. *J. Bacteriol.* **1997**, *179*, 2512–2518. [[CrossRef](#)] [[PubMed](#)]
51. Stoffregen, W.C.; Pohlenz, J.F.; Dean-Nystrom, E.A. *Escherichia coli* O157:H7 in the gallbladders of experimentally infected calves. *J. Vet. Diagn. Investig.* **2004**, *16*, 79–83. [[CrossRef](#)] [[PubMed](#)]
52. Jeong, K.C.; Kang, M.Y.; Heimke, C.; Shere, J.A.; Erol, I.; Kaspar, C.W. Isolation of *Escherichia coli* O157:H7 from the gall bladder of inoculated and naturally-infected cattle. *Vet. Microbiol.* **2007**, *119*, 339–345. [[CrossRef](#)] [[PubMed](#)]
53. Reinstein, S.; Fox, J.T.; Shi, X.; Nagaraja, T.G. Prevalence of *Escherichia coli* O157:H7 in gallbladders of beef cattle. *Appl. Environ. Microbiol.* **2007**, *73*, 1002–1004. [[CrossRef](#)] [[PubMed](#)]
54. Yin, X.; Feng, Y.; Wheatcroft, R.; Chambers, J.; Gong, J.; Gyles, C.L. Adherence of *Escherichia coli* O157:H7 to epithelial cells in vitro and in pig gut loops is affected by bacterial culture conditions. *Can. J. Vet. Res.* **2011**, *75*, 81–88. [[PubMed](#)]
55. Shaikh, N.; Tarr, P.I. *Escherichia coli* O157:H7 shiga toxin-encoding bacteriophages: Integrations, excisions, truncations, and evolutionary implications. *J. Bacteriol.* **2003**, *185*, 3596–3605. [[CrossRef](#)] [[PubMed](#)]
56. Espey, M.G. Role of oxygen gradients in shaping redox relationships between the human intestine and its microbiota. *Free Radic. Biol. Med.* **2013**, *55*, 130–140. [[CrossRef](#)] [[PubMed](#)]
57. Zheng, L.; Kelly, C.J.; Colgan, S.P. Physiologic hypoxia and oxygen homeostasis in the healthy intestine. A review in the theme: Cellular responses to hypoxia. *Am. J. Physiol. Cell Physiol.* **2015**, *309*, C350–C360. [[CrossRef](#)] [[PubMed](#)]
58. Albenberg, L.; Esipova, T.V.; Judge, C.P.; Bittinger, K.; Chen, J.; Laughlin, A.; Grunberg, S.; Baldassano, R.N.; Lewis, J.D.; Li, H.; et al. Correlation between intraluminal oxygen gradient and radial partitioning of intestinal microbiota in humans and mice. *Gastroenterology* **2014**, *147*, 1055–1063. [[CrossRef](#)] [[PubMed](#)]

59. Gunsalus, R.P.; Park, S.J. Aerobic-anaerobic gene regulation in *Escherichia coli*: Control by the arcB and fnr regulons. *Res. Microbiol.* **1994**, *145*, 437–450. [[CrossRef](#)]
60. Stolper, D.A.; Revsbech, N.P.; Canfield, D.E. Aerobic growth at nanomolar oxygen concentrations. *Proc. Natl. Acad. Sci. USA* **2010**, *107*, 18755–18760. [[CrossRef](#)] [[PubMed](#)]
61. Ingledew, W.J.; Poole, R.K. The respiratory chains of *Escherichia coli*. *Microbiol. Rev.* **1984**, *48*, 222–271. [[PubMed](#)]
62. Förster, A.H.; Gescher, J. Metabolic engineering of *Escherichia coli* for production of mixed-acid fermentation end products. *Front. Bioeng. Biotechnol.* **2014**, *2*, 16. [[PubMed](#)]
63. James, B.W.; Keevil, C.W. Influence of oxygen availability on physiology, verocytotoxin expression and adherence of *Escherichia coli* O157. *J. Appl. Microbiol.* **1999**, *86*, 117–124. [[CrossRef](#)] [[PubMed](#)]
64. Musken, A.; Bielaszewska, M.; Greune, L.; Schweppe, C.H.; Muthing, J.; Schmidt, H.; Schmidt, M.A.; Karch, H.; Zhang, W. Anaerobic conditions promote expression of SFP fimbriae and adherence of sorbitol-fermenting enterohemorrhagic *Escherichia coli* O157:Nm to human intestinal epithelial cells. *Appl. Environ. Microbiol.* **2008**, *74*, 1087–1093. [[CrossRef](#)] [[PubMed](#)]
65. Ando, H.; Abe, H.; Sugimoto, N.; Tobe, T. Maturation of functional type III secretion machinery by activation of anaerobic respiration in enterohaemorrhagic *Escherichia coli*. *Microbiology* **2007**, *153*, 464–473. [[CrossRef](#)] [[PubMed](#)]
66. Carlson-Banning, K.M.; Sperandio, V. Catabolite and oxygen regulation of enterohemorrhagic *Escherichia coli* virulence. *mBio* **2016**, *7*, e01852-16. [[CrossRef](#)] [[PubMed](#)]
67. Schüller, S.; Phillips, A.D. Microaerobic conditions enhance type III secretion and adherence of enterohaemorrhagic *Escherichia coli* to polarized human intestinal epithelial cells. *Environ. Microbiol.* **2010**, *12*, 2426–2435. [[CrossRef](#)] [[PubMed](#)]
68. Tran, S.L.; Billoud, L.; Lewis, S.B.; Phillips, A.D.; Schüller, S. Shiga toxin production and translocation during microaerobic human colonic infection with shiga toxin-producing *E. coli* O157:H7 and O104:H4. *Cell. Microbiol.* **2014**, *16*, 1255–1266. [[CrossRef](#)] [[PubMed](#)]
69. Wagner, P.L.; Neely, M.N.; Zhang, X.; Acheson, D.W.; Waldor, M.K.; Friedman, D.I. Role for a phage promoter in shiga toxin 2 expression from a pathogenic *Escherichia coli* strain. *J. Bacteriol.* **2001**, *183*, 2081–2085. [[CrossRef](#)] [[PubMed](#)]
70. Łoś Joanna, M.; Łoś, M.; Węgrzyn, A.; Węgrzyn, G. Hydrogen peroxide-mediated induction of the shiga toxin-converting lambdaoid prophage st2-8624 in *Escherichia coli* O157:H7. *FEMS Immunol. Med. Microbiol.* **2010**, *58*, 322–329.
71. González-Flecha, B.; Demple, B. Metabolic sources of hydrogen peroxide in aerobically growing *Escherichia coli*. *J. Biol. Chem.* **1995**, *270*, 13681–13687. [[CrossRef](#)] [[PubMed](#)]
72. Kolling, G.L.; Matthews, K.R. Export of virulence genes and shiga toxin by membrane vesicles of *Escherichia coli* O157:H7. *Appl. Environ. Microbiol.* **1999**, *65*, 1843–1848. [[PubMed](#)]
73. Bielaszewska, M.; Rüter, C.; Bauwens, A.; Greune, L.; Jarosch, K.-A.; Steil, D.; Zhang, W.; He, X.; Llobes, R.; Fruth, A.; et al. Host cell interactions of outer membrane vesicle-associated virulence factors of enterohemorrhagic *Escherichia coli* O157: Intracellular delivery, trafficking and mechanisms of cell injury. *PLoS Pathog.* **2017**, *13*, e1006159. [[CrossRef](#)] [[PubMed](#)]
74. Yokoyama, K.; Horii, T.; Yamashino, T.; Hashikawa, S.; Barua, S.; Hasegawa, T.; Watanabe, H.; Ohta, M. Production of shiga toxin by *Escherichia coli* measured with reference to the membrane vesicle-associated toxins. *FEMS Microbiol. Lett.* **2000**, *192*, 139–144. [[CrossRef](#)] [[PubMed](#)]
75. Schüller, S.; Frankel, G.; Phillips, A.D. Interaction of shiga toxin from *Escherichia coli* with human intestinal epithelial cell lines and explants: Stx2 induces epithelial damage in organ culture. *Cell. Microbiol.* **2004**, *6*, 289–301. [[CrossRef](#)] [[PubMed](#)]
76. O'Donoghue, E.J.; Krachler, A.M. Mechanisms of outer membrane vesicle entry into host cells. *Cell. Microbiol.* **2016**, *18*, 1508–1517. [[CrossRef](#)] [[PubMed](#)]
77. Guo, P.; Weinstein, A.M.; Weinbaum, S. A hydrodynamic mechanosensory hypothesis for brush border microvilli. *Am. J. Physiol. Ren. Physiol.* **2000**, *279*, F698–F712. [[CrossRef](#)] [[PubMed](#)]
78. Rodesney, C.A.; Roman, B.; Dhamani, N.; Cooley, B.J.; Katira, P.; Touhami, A.; Gordon, V.D. Mechanosensing of shear by *Pseudomonas aeruginosa* leads to increased levels of the cyclic-di-GMP signal initiating biofilm development. *Proc. Natl. Acad. Sci. USA* **2017**, *114*, 5906–5911. [[CrossRef](#)] [[PubMed](#)]

79. Thomas, W.E.; Nilsson, L.M.; Forero, M.; Sokurenko, E.V.; Vogel, V. Shear-dependent 'stick-and-roll' adhesion of type 1 fimbriated *Escherichia coli*. *Mol. Microbiol.* **2004**, *53*, 1545–1557. [[CrossRef](#)] [[PubMed](#)]
80. Alsharif, G.; Ahmad, S.; Islam, M.S.; Shah, R.; Busby, S.J.; Krachler, A.M. Host attachment and fluid shear are integrated into a mechanical signal regulating virulence in *Escherichia coli* O157:H7. *Proc. Natl. Acad. Sci. USA* **2015**, *112*, 5503–5508. [[CrossRef](#)] [[PubMed](#)]
81. Stecher, B.; Hardt, W.D. Mechanisms controlling pathogen colonization of the gut. *Curr. Opin. Microbiol.* **2011**, *14*, 82–91. [[CrossRef](#)] [[PubMed](#)]
82. Pickard, J.M.; Zeng, M.Y.; Caruso, R.; Nunez, G. Gut microbiota: Role in pathogen colonization, immune responses, and inflammatory disease. *Immunol. Rev.* **2017**, *279*, 70–89. [[CrossRef](#)] [[PubMed](#)]
83. Sorbara, M.T.; Pamer, E.G. Interbacterial mechanisms of colonization resistance and the strategies pathogens use to overcome them. *Mucosal Immunol.* **2018**. [[CrossRef](#)] [[PubMed](#)]
84. Chassaing, B.; Cascales, E. Antibacterial weapons: Targeted destruction in the microbiota. *Trends Microbiol.* **2018**, *26*, 329–338. [[CrossRef](#)] [[PubMed](#)]
85. Le Bihan, G.; Jubelin, G.; Garneau, P.; Bernalier-Donadille, A.; Martin, C.; Beaudry, F.; Harel, J. Transcriptome analysis of *Escherichia coli* O157:H7 grown in vitro in the sterile-filtrated cecal content of human gut microbiota associated rats reveals an adaptive expression of metabolic and virulence genes. *Microbes Infect.* **2015**, *17*, 23–33. [[CrossRef](#)] [[PubMed](#)]
86. Fabich, A.J.; Jones, S.A.; Chowdhury, F.Z.; Cernosek, A.; Anderson, A.; Smalley, D.; McHargue, J.W.; Hightower, G.A.; Smith, J.T.; Autieri, S.M.; et al. Comparison of carbon nutrition for pathogenic and commensal *Escherichia coli* strains in the mouse intestine. *Infect. Immun.* **2008**, *76*, 1143–1152. [[CrossRef](#)] [[PubMed](#)]
87. Leatham, M.P.; Banerjee, S.; Autieri, S.M.; Mercado-Lubo, R.; Conway, T.; Cohen, P.S. Precolonized human commensal *Escherichia coli* strains serve as a barrier to *E. coli* O157:H7 growth in the streptomycin-treated mouse intestine. *Infect. Immun.* **2009**, *77*, 2876–2886. [[CrossRef](#)] [[PubMed](#)]
88. Maltby, R.; Leatham-Jensen, M.P.; Gibson, T.; Cohen, P.S.; Conway, T. Nutritional basis for colonization resistance by human commensal *Escherichia coli* strains HS and Nissle 1917 against *E. coli* O157:H7 in the mouse intestine. *PLoS ONE* **2013**, *8*, e53957. [[CrossRef](#)] [[PubMed](#)]
89. Momose, Y.; Hirayama, K.; Itoh, K. Competition for proline between indigenous *Escherichia coli* and *E. coli* O157:H7 in gnotobiotic mice associated with infant intestinal microbiota and its contribution to the colonization resistance against *E. coli* O157:H7. *Antonie van Leeuwenhoek* **2008**, *94*, 165–171. [[CrossRef](#)] [[PubMed](#)]
90. Mohsin, M.; Guenther, S.; Schierack, P.; Tedin, K.; Wieler, L.H. Probiotic *Escherichia coli* Nissle 1917 reduces growth, shiga toxin expression, release and thus cytotoxicity of enterohemorrhagic *Escherichia coli*. *Int. J. Med. Microbiol.* **2015**, *305*, 20–26. [[CrossRef](#)] [[PubMed](#)]
91. Eaton, K.A.; Honkala, A.; Auchtung, T.A.; Britton, R.A. Probiotic *Lactobacillus reuteri* ameliorates disease due to enterohemorrhagic *Escherichia coli* in germfree mice. *Infect. Immun.* **2011**, *79*, 185–191. [[CrossRef](#)] [[PubMed](#)]
92. Takahashi, M.; Taguchi, H.; Yamaguchi, H.; Osaki, T.; Komatsu, A.; Kamiya, S. The effect of probiotic treatment with *Clostridium butyricum* on enterohemorrhagic *Escherichia coli* O157:H7 infection in mice. *FEMS Immunol. Med. Microbiol.* **2004**, *41*, 219–226. [[CrossRef](#)] [[PubMed](#)]
93. Vazquez-Gutierrez, P.; de Wouters, T.; Werder, J.; Chassard, C.; Lacroix, C. High iron-sequestering bifidobacteria inhibit enteropathogen growth and adhesion to intestinal epithelial cells in vitro. *Front. Microbiol.* **2016**, *7*, 1480. [[CrossRef](#)] [[PubMed](#)]
94. Schamberger, G.P.; Diez-Gonzalez, F. Characterization of colicinogenic *Escherichia coli* strains inhibitory to enterohemorrhagic *Escherichia coli*. *J. Food Prot.* **2004**, *67*, 486–492. [[CrossRef](#)] [[PubMed](#)]
95. Bertin, Y.; Habouzit, C.; Duniere, L.; Laurier, M.; Durand, A.; Duchez, D.; Segura, A.; Thevenot-Sergentet, D.; Baruzzi, F.; Chaucheyras-Durand, F.; et al. *Lactobacillus reuteri* suppresses *E. coli* O157:H7 in bovine ruminal fluid: Toward a pre-slaughter strategy to improve food safety? *PLoS ONE* **2017**, *12*, e0187229. [[CrossRef](#)] [[PubMed](#)]
96. Eberhart, L.J.; Deringer, J.R.; Brayton, K.A.; Sawant, A.A.; Besser, T.E.; Call, D.R. Characterization of a novel microcin that kills enterohemorrhagic *Escherichia coli* O157:H7 and O26. *Appl. Environ. Microbiol.* **2012**, *78*, 6592–6599. [[CrossRef](#)] [[PubMed](#)]

97. Arena, M.P.; Russo, P.; Capozzi, V.; Lopez, P.; Fiocco, D.; Spano, G. Probiotic abilities of riboflavin-overproducing *Lactobacillus* strains: A novel promising application of probiotics. *Appl. Microbiol. Biotechnol.* **2014**, *98*, 7569–7581. [[CrossRef](#)] [[PubMed](#)]
98. Chen, X.; Xu, J.; Shuai, J.; Chen, J.; Zhang, Z.; Fang, W. The s-layer proteins of *Lactobacillus crispatus* strain ZJ001 is responsible for competitive exclusion against *Escherichia coli* O157:H7 and salmonella typhimurium. *Int. J. Food Microbiol.* **2007**, *115*, 307–312. [[CrossRef](#)] [[PubMed](#)]
99. Gagnon, M.; Kheadr, E.E.; Le Blay, G.; Fliss, I. In vitro inhibition of *Escherichia coli* O157:H7 by bifidobacterial strains of human origin. *Int. J. Food Microbiol.* **2004**, *92*, 69–78. [[CrossRef](#)] [[PubMed](#)]
100. Johnson-Henry, K.C.; Hagen, K.E.; Gordonpour, M.; Tompkins, T.A.; Sherman, P.M. Surface-layer protein extracts from *Lactobacillus helveticus* inhibit enterohaemorrhagic *Escherichia coli* O157:H7 adhesion to epithelial cells. *Cell. Microbiol.* **2007**, *9*, 356–367. [[CrossRef](#)] [[PubMed](#)]
101. Sherman, P.M.; Johnson-Henry, K.C.; Yeung, H.P.; Ngo, P.S.; Goulet, J.; Tompkins, T.A. Probiotics reduce enterohemorrhagic *Escherichia coli* O157:H7- and enteropathogenic *E. coli* O127:H6-induced changes in polarized t84 epithelial cell monolayers by reducing bacterial adhesion and cytoskeletal rearrangements. *Infect. Immun.* **2005**, *73*, 5183–5188. [[CrossRef](#)] [[PubMed](#)]
102. Hugo, A.A.; Kakisu, E.; De Antoni, G.L.; Perez, P.F. Lactobacilli antagonize biological effects of enterohaemorrhagic *Escherichia coli* in vitro. *Lett. Appl. Microbiol.* **2008**, *46*, 613–619. [[CrossRef](#)] [[PubMed](#)]
103. Medellin-Pena, M.J.; Griffiths, M.W. Effect of molecules secreted by *Lactobacillus acidophilus* strain La-5 on *Escherichia coli* O157:H7 colonization. *Appl. Environ. Microbiol.* **2009**, *75*, 1165–1172. [[CrossRef](#)] [[PubMed](#)]
104. Nakanishi, N.; Tashiro, K.; Kuhara, S.; Hayashi, T.; Sugimoto, N.; Tobe, T. Regulation of virulence by butyrate sensing in enterohaemorrhagic *Escherichia coli*. *Microbiology* **2009**, *155*, 521–530. [[CrossRef](#)] [[PubMed](#)]
105. Kim, Y.; Kim, S.H.; Whang, K.Y.; Kim, Y.J.; Oh, S. Inhibition of *Escherichia coli* O157:H7 attachment by interactions between lactic acid bacteria and intestinal epithelial cells. *J. Microbiol. Biotechnol.* **2008**, *18*, 1278–1285. [[PubMed](#)]
106. Mack, D.R.; Michail, S.; Wei, S.; McDougall, L.; Hollingsworth, M.A. Probiotics inhibit enteropathogenic *E. coli* adherence in vitro by inducing intestinal mucin gene expression. *Am. J. Physiol.* **1999**, *276*, G941–G950. [[PubMed](#)]
107. Curtis, M.M.; Hu, Z.; Klimko, C.; Narayanan, S.; Deberardinis, R.; Sperandio, V. The gut commensal *Bacteroides thetaiotaomicron* exacerbates enteric infection through modification of the metabolic landscape. *Cell Host Microbe* **2014**, *16*, 759–769. [[CrossRef](#)] [[PubMed](#)]
108. Iversen, H.; Lindback, T.; L’Abee-Lund, T.M.; Roos, N.; Aspholm, M.; Stenfors Arnesen, L. The gut bacterium *Bacteroides thetaiotaomicron* influences the virulence potential of the enterohemorrhagic *Escherichia coli* o103:H25. *PLoS ONE* **2015**, *10*, e0118140. [[CrossRef](#)] [[PubMed](#)]
109. Sperandio, V.; Mellies, J.L.; Nguyen, W.; Shin, S.; Kaper, J.B. Quorum sensing controls expression of the type III secretion gene transcription and protein secretion in enterohemorrhagic and enteropathogenic *Escherichia coli*. *Proc. Natl. Acad. Sci. USA* **1999**, *96*, 15196–15201. [[CrossRef](#)] [[PubMed](#)]
110. Sperandio, V.; Torres, A.G.; Jarvis, B.; Nataro, J.P.; Kaper, J.B. Bacteria-host communication: The language of hormones. *Proc. Natl. Acad. Sci. USA* **2003**, *100*, 8951–8956. [[CrossRef](#)] [[PubMed](#)]
111. Walters, M.; Sperandio, V. Autoinducer 3 and epinephrine signaling in the kinetics of locus of enterocyte effacement gene expression in enterohemorrhagic *Escherichia coli*. *Infect. Immun.* **2006**, *74*, 5445–5455. [[CrossRef](#)] [[PubMed](#)]
112. Clarke, M.B.; Hughes, D.T.; Zhu, C.; Boedeker, E.C.; Sperandio, V. The QseC sensor kinase: A bacterial adrenergic receptor. *Proc. Natl. Acad. Sci. USA* **2006**, *103*, 10420–10425. [[CrossRef](#)] [[PubMed](#)]
113. Sule, N.; Pasupuleti, S.; Kohli, N.; Menon, R.; Dangott, L.J.; Manson, M.D.; Jayaraman, A. The norepinephrine metabolite 3,4-dihydroxymandelic acid is produced by the commensal microbiota and promotes chemotaxis and virulence gene expression in enterohemorrhagic *Escherichia coli*. *Infect. Immun.* **2017**. [[CrossRef](#)] [[PubMed](#)]
114. Bansal, T.; Englert, D.; Lee, J.; Hegde, M.; Wood, T.K.; Jayaraman, A. Differential effects of epinephrine, norepinephrine, and indole on *Escherichia coli* O157:H7 chemotaxis, colonization, and gene expression. *Infect. Immun.* **2007**, *75*, 4597–4607. [[CrossRef](#)] [[PubMed](#)]
115. Bommarius, B.; Anyanful, A.; Izrayelit, Y.; Bhatt, S.; Cartwright, E.; Wang, W.; Swimm, A.I.; Benian, G.M.; Schroeder, F.C.; Kalman, D. A family of indoles regulate virulence and Shiga toxin production in pathogenic *E. coli*. *PLoS ONE* **2013**, *8*, e54456. [[CrossRef](#)] [[PubMed](#)]

116. Van der Ark, K.C.H.; van Heck, R.G.A.; Martins Dos Santos, V.A.P.; Belzer, C.; de Vos, W.M. More than just a gut feeling: Constraint-based genome-scale metabolic models for predicting functions of human intestinal microbes. *Microbiome* **2017**, *5*, 78. [[CrossRef](#)] [[PubMed](#)]
117. Sung, J.; Kim, S.; Cabatbat, J.J.T.; Jang, S.; Jin, Y.S.; Jung, G.Y.; Chia, N.; Kim, P.J. Global metabolic interaction network of the human gut microbiota for context-specific community-scale analysis. *Nat. Commun.* **2017**, *8*, 15393. [[CrossRef](#)] [[PubMed](#)]
118. De Sablet, T.; Chassard, C.; Bernalier-Donadille, A.; Vareille, M.; Gobert, A.P.; Martin, C. Human microbiota-secreted factors inhibit shiga toxin synthesis by enterohemorrhagic *Escherichia coli* O157:H7. *Infect. Immun.* **2009**, *77*, 783–790. [[CrossRef](#)] [[PubMed](#)]
119. Fukuda, S.; Toh, H.; Hase, K.; Oshima, K.; Nakanishi, Y.; Yoshimura, K.; Tobe, T.; Clarke, J.M.; Topping, D.L.; Suzuki, T.; et al. Bifidobacteria can protect from enteropathogenic infection through production of acetate. *Nature* **2011**, *469*, 543–547. [[CrossRef](#)] [[PubMed](#)]
120. Zumbun, S.D.; Melton-Celsa, A.R.; Smith, M.A.; Gilbreath, J.J.; Merrell, D.S.; O'Brien, A.D. Dietary choice affects shiga toxin-producing *Escherichia coli* (STEC) O157:H7 colonization and disease. *Proc. Natl. Acad. Sci. USA* **2013**, *110*, E2126–E2133. [[CrossRef](#)] [[PubMed](#)]
121. McGuckin, M.A.; Linden, S.K.; Sutton, P.; Florin, T.H. Mucin dynamics and enteric pathogens. *Nat. Rev. Microbiol.* **2011**, *9*, 265–278. [[CrossRef](#)] [[PubMed](#)]
122. Tailford, L.E.; Crost, E.H.; Kavanaugh, D.; Juge, N. Mucin glycan foraging in the human gut microbiome. *Front. Genet.* **2015**, *6*, 81. [[CrossRef](#)] [[PubMed](#)]
123. Conway, T.; Cohen, P.S. Commensal and pathogenic *Escherichia coli* metabolism in the gut. *Microbiol. Spectr.* **2015**, *3*. [[CrossRef](#)] [[PubMed](#)]
124. Grys, T.E.; Siegel, M.B.; Lathem, W.W.; Welch, R.A. The stce protease contributes to intimate adherence of enterohemorrhagic *Escherichia coli* O157:H7 to host cells. *Infect. Immun.* **2005**, *73*, 1295–1303. [[CrossRef](#)] [[PubMed](#)]
125. Hews, C.L.; Tran, S.L.; Wegmann, U.; Brett, B.; Walsham, A.D.S.; Kavanaugh, D.; Ward, N.J.; Juge, N.; Schuller, S. The StcE metalloprotease of enterohaemorrhagic *Escherichia coli* reduces the inner mucus layer and promotes adherence to human colonic epithelium ex vivo. *Cell. Microbiol.* **2017**, *19*. [[CrossRef](#)] [[PubMed](#)]
126. Saile, N.; Schwarz, L.; Eissenberger, K.; Klumpp, J.; Fricke, F.W.; Schmidt, H. Growth advantage of *Escherichia coli* O104:H4 strains on 5-n-acetyl-9-o-acetyl neuraminic acid as a carbon source is dependent on heterogeneous phage-borne nans-p esterases. *Int. J. Med. Microbiol.* **2018**, *308*, 459–468. [[CrossRef](#)] [[PubMed](#)]
127. Saile, N.; Voigt, A.; Kessler, S.; Stressler, T.; Klumpp, J.; Fischer, L.; Schmidt, H. *Escherichia coli* O157:H7 strain EDL933 harbors multiple functional prophage-associated genes necessary for the utilization of 5-n-acetyl-9-o-acetyl neuraminic acid as a growth substrate. *Appl. Environ. Microbiol.* **2016**, *82*, 5940–5950. [[CrossRef](#)] [[PubMed](#)]
128. Le Bihan, G.; Sicard, J.F.; Garneau, P.; Bernalier-Donadille, A.; Gobert, A.P.; Garrivier, A.; Martin, C.; Hay, A.G.; Beaudry, F.; Harel, J.; et al. The NAG sensor NagC regulates LEE gene expression and contributes to gut colonization by *Escherichia coli* O157:H7. *Front. Cell. Infect. Microbiol.* **2017**, *7*, 134. [[CrossRef](#)] [[PubMed](#)]
129. Walsham, A.D.; MacKenzie, D.A.; Cook, V.; Wemyss-Holden, S.; Hews, C.L.; Juge, N.; Schuller, S. *Lactobacillus reuteri* inhibition of enteropathogenic *Escherichia coli* adherence to human intestinal epithelium. *Front. Microbiol.* **2016**, *7*, 244. [[CrossRef](#)] [[PubMed](#)]
130. Gagnon, M.; Zihler Berner, A.; Chervet, N.; Chassard, C.; Lacroix, C. Comparison of the Caco-2, HT-29 and the mucus-secreting HT29-MTX intestinal cell models to investigate *Salmonella* adhesion and invasion. *J. Microbiol. Methods* **2013**, *94*, 274–279. [[CrossRef](#)] [[PubMed](#)]
131. Kim, J.C.; Yoon, J.W.; Kim, C.H.; Park, M.S.; Cho, S.H. Repression of flagella motility in enterohemorrhagic *Escherichia coli* O157:H7 by mucin components. *Biochem. Biophys. Res. Commun.* **2012**, *423*, 789–792. [[CrossRef](#)] [[PubMed](#)]
132. In, J.; Foulke-Abel, J.; Zachos, N.C.; Hansen, A.M.; Kaper, J.B.; Bernstein, H.D.; Halushka, M.; Blutt, S.; Estes, M.K.; Donowitz, M.; et al. Enterohemorrhagic *Escherichia coli* reduce mucus and intermicrovillar bridges in human stem cell-derived colonoids. *Cell. Mol. Gastroenterol. Hepatol.* **2016**, *2*, 48–62. [[CrossRef](#)] [[PubMed](#)]
133. Gerhardt, E.; Masso, M.; Paton, A.W.; Paton, J.C.; Zotta, E.; Ibarra, C. Inhibition of water absorption and selective damage to human colonic mucosa are induced by subtilase cytotoxin produced by *Escherichia coli* O113:H21. *Infect. Immun.* **2013**, *81*, 2931–2937. [[CrossRef](#)] [[PubMed](#)]

134. Pacheco, A.R.; Curtis, M.M.; Ritchie, J.M.; Munera, D.; Waldor, M.K.; Moreira, C.G.; Sperandio, V. Fucose sensing regulates bacterial intestinal colonization. *Nature* **2012**, *492*, 113–117. [[CrossRef](#)] [[PubMed](#)]
135. Melton-Celsa, A.R.; Darnell, S.C.; O'Brien, A.D. Activation of shiga-like toxins by mouse and human intestinal mucus correlates with virulence of enterohemorrhagic *Escherichia coli* O91:H21 isolates in orally infected, streptomycin-treated mice. *Infect. Immun.* **1996**, *64*, 1569–1576. [[PubMed](#)]
136. Scheutz, F.; Teel, L.D.; Beutin, L.; Pierard, D.; Buvens, G.; Karch, H.; Mellmann, A.; Caprioli, A.; Tozzoli, R.; Morabito, S.; et al. Multicenter evaluation of a sequence-based protocol for subtyping Shiga toxins and standardizing stx nomenclature. *J. Clin. Microbiol.* **2012**, *50*, 2951–2963. [[CrossRef](#)] [[PubMed](#)]
137. Bielaszewska, M.; Friedrich, A.W.; Aldick, T.; Schurk-Bulgrin, R.; Karch, H. Shiga toxin activatable by intestinal mucus in *Escherichia coli* isolated from humans: Predictor for a severe clinical outcome. *Clin. Infect. Dis.* **2006**, *43*, 1160–1167. [[CrossRef](#)] [[PubMed](#)]
138. Kokai-Kun, J.F.; Melton-Celsa, A.R.; O'Brien, A.D. Elastase in intestinal mucus enhances the cytotoxicity of Shiga toxin type 2d. *J. Biol. Chem.* **2000**, *275*, 3713–3721. [[CrossRef](#)] [[PubMed](#)]
139. Melton-Celsa, A.R.; Kokai-Kun, J.F.; O'Brien, A.D. Activation of shiga toxin type 2d (stx2d) by elastase involves cleavage of the c-terminal two amino acids of the $\alpha 2$ peptide in the context of the appropriate b pentamer. *Mol. Microbiol.* **2002**, *43*, 207–215. [[CrossRef](#)] [[PubMed](#)]
140. Bungler, J.C.; Melton-Celsa, A.R.; O'Brien, A.D. Shiga toxin type 2dact displays increased binding to globotriaosylceramide in vitro and increased lethality in mice after activation by elastase. *Toxins* **2013**, *5*, 2074–2092. [[CrossRef](#)] [[PubMed](#)]
141. Herold, S.; Paton, J.C.; Srimanote, P.; Paton, A.W. Differential effects of short-chain fatty acids and iron on expression of Iha in shiga-toxigenic *Escherichia coli*. *Microbiology* **2009**, *155*, 3554–3563. [[CrossRef](#)] [[PubMed](#)]
142. Den Besten, G.; van Eunen, K.; Groen, A.K.; Venema, K.; Reijngoud, D.J.; Bakker, B.M. The role of short-chain fatty acids in the interplay between diet, gut microbiota, and host energy metabolism. *J. Lipid Res.* **2013**, *54*, 2325–2340. [[CrossRef](#)] [[PubMed](#)]
143. Gilbert, R.A.; Tomkins, N.; Padmanabha, J.; Gough, J.M.; Krause, D.O.; McSweeney, C.S. Effect of finishing diets on *Escherichia coli* populations and prevalence of enterohaemorrhagic *E. coli* virulence genes in cattle faeces. *J. Appl. Microbiol.* **2005**, *99*, 885–894. [[CrossRef](#)] [[PubMed](#)]
144. Tobe, T.; Nakanishi, N.; Sugimoto, N. Activation of motility by sensing short-chain fatty acids via two steps in a flagellar gene regulatory cascade in enterohemorrhagic *Escherichia coli*. *Infect. Immun.* **2011**, *79*, 1016–1024. [[CrossRef](#)] [[PubMed](#)]
145. Lackraj, T.; Kim, J.I.; Tran, S.L.; Barnett Foster, D.E. Differential modulation of flagella expression in enterohaemorrhagic *Escherichia coli* O157: H7 by intestinal short-chain fatty acid mixes. *Microbiology* **2016**, *162*, 1761–1772. [[CrossRef](#)] [[PubMed](#)]
146. Momose, Y.; Hirayama, K.; Itoh, K. Effect of organic acids on inhibition of *Escherichia coli* O157:H7 colonization in gnotobiotic mice associated with infant intestinal microbiota. *Antonie van Leeuwenhoek* **2008**, *93*, 141–149. [[CrossRef](#)] [[PubMed](#)]
147. Johnson, J.R.; Jelacic, S.; Schoening, L.M.; Clabots, C.; Shaikh, N.; Mobley, H.L.; Tarr, P.I. The IrgA homologue adhesin Iha is an *Escherichia coli* virulence factor in murine urinary tract infection. *Infect. Immun.* **2005**, *73*, 965–971. [[CrossRef](#)] [[PubMed](#)]
148. Rashid, R.A.; Tarr, P.I.; Moseley, S.L. Expression of the *Escherichia coli* irga homolog adhesin is regulated by the ferric uptake regulation protein. *Microb. Pathog.* **2006**, *41*, 207–217. [[CrossRef](#)] [[PubMed](#)]
149. Cordonnier, C.; Le Bihan, G.; Emond-Rheault, J.G.; Garrivier, A.; Harel, J.; Jubelin, G. Vitamin B12 uptake by the gut commensal bacteria *Bacteroides thetaiotaomicron* limits the production of shiga toxin by enterohemorrhagic *Escherichia coli*. *Toxins* **2016**, *8*, 14. [[CrossRef](#)] [[PubMed](#)]
150. Keusch, G.T.; Acheson, D.W.; Aaldering, L.; Erban, J.; Jacewicz, M.S. Comparison of the effects of shiga-like toxin 1 on cytokine- and butyrate-treated human umbilical and saphenous vein endothelial cells. *J. Infect. Dis.* **1996**, *173*, 1164–1170. [[CrossRef](#)] [[PubMed](#)]
151. Groneberg, D.; Voussen, B.; Friebe, A. Integrative control of gastrointestinal motility by nitric oxide. *Curr. Med. Chem.* **2016**, *23*, 2715–2735. [[CrossRef](#)] [[PubMed](#)]
152. Bogdan, C. Nitric oxide and the immune response. *Nat. Immunol.* **2001**, *2*, 907–916. [[CrossRef](#)] [[PubMed](#)]
153. Sharma, J.N.; Al-Omran, A.; Parvathy, S.S. Role of nitric oxide in inflammatory diseases. *Inflammopharmacology* **2007**, *15*, 252–259. [[CrossRef](#)] [[PubMed](#)]

154. Schairer, D.O.; Chouake, J.S.; Nosanchuk, J.D.; Friedman, A.J. The potential of nitric oxide releasing therapies as antimicrobial agents. *Virulence* **2012**, *3*, 271–279. [[CrossRef](#)] [[PubMed](#)]
155. Gardner, A.M.; Gardner, P.R. Flavohemoglobin detoxifies nitric oxide in aerobic, but not anaerobic, *Escherichia coli*. Evidence for a novel inducible anaerobic nitric oxide-scavenging activity. *J. Biol. Chem.* **2002**, *277*, 8166–8171. [[CrossRef](#)] [[PubMed](#)]
156. Gomes, C.M.; Giuffre, A.; Forte, E.; Vicente, J.B.; Saraiva, L.M.; Brunori, M.; Teixeira, M. A novel type of nitric-oxide reductase. *Escherichia coli* flavorubredoxin. *J. Biol. Chem.* **2002**, *277*, 25273–25276. [[CrossRef](#)] [[PubMed](#)]
157. Van Wonderen, J.H.; Burlat, B.; Richardson, D.J.; Cheesman, M.R.; Butt, J.N. The nitric oxide reductase activity of cytochrome c nitrite reductase from *Escherichia coli*. *J. Biol. Chem.* **2008**, *283*, 9587–9594. [[CrossRef](#)] [[PubMed](#)]
158. Vine, C.E.; Cole, J.A. Nitrosative stress in *Escherichia coli*: Reduction of nitric oxide. *Biochem. Soc. Trans.* **2011**, *39*, 213–215. [[CrossRef](#)] [[PubMed](#)]
159. Gardner, A.M.; Helmick, R.A.; Gardner, P.R. Flavorubredoxin, an inducible catalyst for nitric oxide reduction and detoxification in *Escherichia coli*. *J. Biol. Chem.* **2002**, *277*, 8172–8177. [[CrossRef](#)] [[PubMed](#)]
160. Kulasekara, B.R.; Jacobs, M.; Zhou, Y.; Wu, Z.; Sims, E.; Saenphimmachak, C.; Rohmer, L.; Ritchie, J.M.; Radey, M.; McKeivitt, M.; et al. Analysis of the genome of the *Escherichia coli* O157:H7 2006 spinach-associated outbreak isolate indicates candidate genes that may enhance virulence. *Infect. Immun.* **2009**, *77*, 3713–3721. [[CrossRef](#)] [[PubMed](#)]
161. Iyoda, S.; Manning, S.D.; Seto, K.; Kimata, K.; Isobe, J.; Etoh, Y.; Ichihara, S.; Migita, Y.; Ogata, K.; Honda, M.; et al. Phylogenetic clades 6 and 8 of enterohemorrhagic *Escherichia coli* O157:H7 with particular stx subtypes are more frequently found in isolates from hemolytic uremic syndrome patients than from asymptomatic carriers. *Open Forum Infect. Dis.* **2014**, *1*, ofu061. [[CrossRef](#)] [[PubMed](#)]
162. Shimizu, T.; Tsutsuki, H.; Matsumoto, A.; Nakaya, H.; Noda, M. The nitric oxide reductase of enterohaemorrhagic *Escherichia coli* plays an important role for the survival within macrophages. *Mol. Microbiol.* **2012**, *85*, 492–512. [[CrossRef](#)] [[PubMed](#)]
163. Branchu, P.; Matrat, S.; Vareille, M.; Garrivier, A.; Durand, A.; Crepin, S.; Harel, J.; Jubelin, G.; Gobert, A.P. NsrRr, GadE, and GadX interplay in repressing expression of the *Escherichia coli* O157:H7 lee pathogenicity island in response to nitric oxide. *PLoS Pathog.* **2014**, *10*, e1003874. [[CrossRef](#)] [[PubMed](#)]
164. Marvasi, M.; Chen, C.; Carrazana, M.; Durie, I.A.; Teplitski, M. Systematic analysis of the ability of nitric oxide donors to dislodge biofilms formed by *Salmonella enterica* and *Escherichia coli* O157:H7. *AMB Express* **2014**, *4*, 42. [[CrossRef](#)] [[PubMed](#)]
165. Vareille, M.; de Sablet, T.; Hindre, T.; Martin, C.; Gobert, A.P. Nitric oxide inhibits shiga-toxin synthesis by enterohemorrhagic *Escherichia coli*. *Proc. Natl. Acad. Sci. USA* **2007**, *104*, 10199–10204. [[CrossRef](#)] [[PubMed](#)]
166. Ichimura, K.; Shimizu, T.; Matsumoto, A.; Hirai, S.; Yokoyama, E.; Takeuchi, H.; Yahiro, K.; Noda, M. Nitric oxide-enhanced shiga toxin production was regulated by Fur and RecA in enterohemorrhagic *Escherichia coli* O157. *Microbiologyopen* **2017**, *6*, e00461. [[CrossRef](#)] [[PubMed](#)]
167. Spiro, S. Regulators of bacterial responses to nitric oxide. *FEMS Microbiol. Rev.* **2007**, *31*, 193–211. [[CrossRef](#)] [[PubMed](#)]
168. Wan, B.; Zhang, Q.; Ni, J.; Li, S.; Wen, D.; Li, J.; Xiao, H.; He, P.; Ou, H.Y.; Tao, J.; et al. Type vi secretion system contributes to enterohemorrhagic *Escherichia coli* virulence by secreting catalase against host reactive oxygen species (ROS). *PLoS Pathog.* **2017**, *13*, e1006246. [[CrossRef](#)] [[PubMed](#)]
169. Vareille, M.; Rannou, F.; Thelier, N.; Glasser, A.L.; de Sablet, T.; Martin, C.; Gobert, A.P. Heme oxygenase-1 is a critical regulator of nitric oxide production in enterohemorrhagic *Escherichia coli*-infected human enterocytes. *J. Immunol.* **2008**, *180*, 5720–5726. [[CrossRef](#)] [[PubMed](#)]
170. Zhou, J.; Xiong, X.; Wang, K.; Zou, L.; Lv, D.; Yin, Y. Ethanolamine metabolism in the mammalian gastrointestinal tract: Mechanisms, patterns, and importance. *Curr. Mol. Med.* **2017**, *17*, 92–99. [[CrossRef](#)] [[PubMed](#)]
171. Albright, F.R.; White, D.A.; Lennarz, W.J. Studies on enzymes involved in the catabolism of phospholipids in *Escherichia coli*. *J. Biol. Chem.* **1973**, *248*, 3968–3977. [[PubMed](#)]
172. Bakovic, M.; Fullerton, M.D.; Michel, V. Metabolic and molecular aspects of ethanolamine phospholipid biosynthesis: The role of CTP:Phosphoethanolamine cytidylyltransferase (pcyt2). *Biochem. Cell. Biol.* **2007**, *85*, 283–300. [[CrossRef](#)] [[PubMed](#)]

173. Dowhan, W. Molecular basis for membrane phospholipid diversity: Why are there so many lipids? *Annu. Rev. Biochem.* **1997**, *66*, 199–232. [[CrossRef](#)] [[PubMed](#)]
174. Blackwell, C.M.; Turner, J.M. Microbial metabolism of amino alcohols. Formation of coenzyme B12-dependent ethanolamine ammonia-lyase and its concerted induction in *Escherichia coli*. *Biochem. J.* **1978**, *176*, 751–757. [[CrossRef](#)] [[PubMed](#)]
175. Blackwell, C.M.; Turner, J.M. Microbial metabolism of amino alcohols. Purification and properties of coenzyme B12-dependent ethanolamine ammonia-lyase of *Escherichia coli*. *Biochem. J.* **1978**, *175*, 555–563. [[CrossRef](#)] [[PubMed](#)]
176. Kaval, K.G.; Garsin, D.A. Ethanolamine utilization in bacteria. *mBio* **2018**, *9*. [[CrossRef](#)] [[PubMed](#)]
177. Moore, T.C.; Escalante-Semerena, J.C. The eutq and eutp proteins are novel acetate kinases involved in ethanolamine catabolism: Physiological implications for the function of the ethanolamine metabolosome in *Salmonella enterica*. *Mol. Microbiol.* **2016**, *99*, 497–511. [[CrossRef](#)] [[PubMed](#)]
178. Kerfeld, C.A.; Heinhorst, S.; Cannon, G.C. Bacterial microcompartments. *Annu. Rev. Microbiol.* **2010**, *64*, 391–408. [[CrossRef](#)] [[PubMed](#)]
179. Sheppard, D.E.; Penrod, J.T.; Bobik, T.; Kofoid, E.; Roth, J.R. Evidence that a B12-adenosyl transferase is encoded within the ethanolamine operon of *Salmonella enterica*. *J. Bacteriol.* **2004**, *186*, 7635–7644. [[CrossRef](#)] [[PubMed](#)]
180. Starai, V.J.; Garrity, J.; Escalante-Semerena, J.C. Acetate excretion during growth of *Salmonella enterica* on ethanolamine requires phosphotransacetylase (eutd) activity, and acetate recapture requires acetyl-coa synthetase (ACS) and phosphotransacetylase (PTA) activities. *Microbiology* **2005**, *151*, 3793–3801. [[CrossRef](#)] [[PubMed](#)]
181. Bertin, Y.; Girardeau, J.P.; Chaucheyras-Durand, F.; Lyan, B.; Pujos-Guillot, E.; Harel, J.; Martin, C. Enterohaemorrhagic *Escherichia coli* gains a competitive advantage by using ethanolamine as a nitrogen source in the bovine intestinal content. *Environ. Microbiol.* **2011**, *13*, 365–377. [[CrossRef](#)] [[PubMed](#)]
182. Tsoy, O.; Ravcheev, D.; Mushegian, A. Comparative genomics of ethanolamine utilization. *J. Bacteriol.* **2009**, *191*, 7157–7164. [[CrossRef](#)] [[PubMed](#)]
183. Barnett Foster, D.; Philpott, D.; Abul-Milh, M.; Huesca, M.; Sherman, P.M.; Lingwood, C.A. Phosphatidylethanolamine recognition promotes enteropathogenic *E. coli* and enterohemorrhagic *E. coli* host cell attachment. *Microb. Pathog.* **1999**, *27*, 289–301. [[CrossRef](#)] [[PubMed](#)]
184. Barnett Foster, D.; Abul-Milh, M.; Huesca, M.; Lingwood, C.A. Enterohemorrhagic *Escherichia coli* induces apoptosis which augments bacterial binding and phosphatidylethanolamine exposure on the plasma membrane outer leaflet. *Infect. Immun.* **2000**, *68*, 3108–3115. [[CrossRef](#)] [[PubMed](#)]
185. Kendall, M.M.; Gruber, C.C.; Parker, C.T.; Sperandio, V. Ethanolamine controls expression of genes encoding components involved in interkingdom signaling and virulence in enterohemorrhagic *Escherichia coli* O157:H7. *mBio* **2012**, *3*. [[CrossRef](#)] [[PubMed](#)]
186. Freestone, P.P.; Sandrini, S.M.; Haigh, R.D.; Lyte, M. Microbial endocrinology: How stress influences susceptibility to infection. *Trends Microbiol.* **2008**, *16*, 55–64. [[CrossRef](#)] [[PubMed](#)]
187. Lyte, M. Microbial endocrinology in the pathogenesis of infectious disease. *Microbiol. Spectr.* **2016**, *4*. [[CrossRef](#)]
188. Eisenhofer, G.; Aneman, A.; Friberg, P.; Hooper, D.; Fandriks, L.; Lonroth, H.; Hunyady, B.; Mezey, E. Substantial production of dopamine in the human gastrointestinal tract. *J. Clin. Endocrinol. Metab.* **1997**, *82*, 3864–3871. [[CrossRef](#)] [[PubMed](#)]
189. Freestone, P.P.; Williams, P.H.; Haigh, R.D.; Maggs, A.F.; Neal, C.P.; Lyte, M. Growth stimulation of intestinal commensal *Escherichia coli* by catecholamines: A possible contributory factor in trauma-induced sepsis. *Shock* **2002**, *18*, 465–470. [[CrossRef](#)] [[PubMed](#)]
190. Lyte, M.; Arulanandam, B.; Nguyen, K.; Frank, C.; Erickson, A.; Francis, D. Norepinephrine induced growth and expression of virulence associated factors in enterotoxigenic and enterohemorrhagic strains of *Escherichia coli*. *Adv. Exp. Med. Biol.* **1997**, *412*, 331–339. [[PubMed](#)]
191. Lyte, M.; Frank, C.D.; Green, B.T. Production of an autoinducer of growth by norepinephrine cultured *Escherichia coli* O157:H7. *FEMS Microbiol. Lett.* **1996**, *139*, 155–159. [[CrossRef](#)] [[PubMed](#)]
192. Freestone, P.P.; Haigh, R.D.; Williams, P.H.; Lyte, M. Stimulation of bacterial growth by heat-stable, norepinephrine-induced autoinducers. *FEMS Microbiol. Lett.* **1999**, *172*, 53–60. [[CrossRef](#)] [[PubMed](#)]

193. Lyte, M.; Bailey, M.T. Neuroendocrine-bacterial interactions in a neurotoxin-induced model of trauma. *J. Surg. Res.* **1997**, *70*, 195–201. [[CrossRef](#)] [[PubMed](#)]
194. Vlisidou, I.; Lyte, M.; van Diemen, P.M.; Hawes, P.; Monaghan, P.; Wallis, T.S.; Stevens, M.P. The neuroendocrine stress hormone norepinephrine augments *Escherichia coli* O157:H7-induced enteritis and adherence in a bovine ligated ileal loop model of infection. *Infect. Immun.* **2004**, *72*, 5446–5451. [[CrossRef](#)] [[PubMed](#)]
195. Chen, C.; Lyte, M.; Stevens, M.P.; Vulchanova, L.; Brown, D.R. Mucosally-directed adrenergic nerves and sympathomimetic drugs enhance non-intimate adherence of *Escherichia coli* O157:H7 to porcine cecum and colon. *Eur. J. Pharmacol.* **2006**, *539*, 116–124. [[CrossRef](#)] [[PubMed](#)]
196. Green, B.T.; Lyte, M.; Kulkarni-Narla, A.; Brown, D.R. Neuromodulation of enteropathogen internalization in peyer's patches from porcine jejunum. *J. Neuroimmunol.* **2003**, *141*, 74–82. [[CrossRef](#)]
197. Hendrickson, B.A.; Guo, J.; Laughlin, R.; Chen, Y.; Alverdy, J.C. Increased type 1 fimbrial expression among commensal *Escherichia coli* isolates in the murine cecum following catabolic stress. *Infect. Immun.* **1999**, *67*, 745–753. [[PubMed](#)]
198. Freestone, P.P.; Lyte, M.; Neal, C.P.; Maggs, A.F.; Haigh, R.D.; Williams, P.H. The mammalian neuroendocrine hormone norepinephrine supplies iron for bacterial growth in the presence of transferrin or lactoferrin. *J. Bacteriol.* **2000**, *182*, 6091–6098. [[CrossRef](#)] [[PubMed](#)]
199. Burton, C.L.; Chhabra, S.R.; Swift, S.; Baldwin, T.J.; Withers, H.; Hill, S.J.; Williams, P. The growth response of *Escherichia coli* to neurotransmitters and related catecholamine drugs requires a functional enterobactin biosynthesis and uptake system. *Infect. Immun.* **2002**, *70*, 5913–5923. [[CrossRef](#)] [[PubMed](#)]
200. Kinney, K.S.; Austin, C.E.; Morton, D.S.; Sonnenfeld, G. Norepinephrine as a growth stimulating factor in bacteria-mechanistic studies. *Life Sci.* **2000**, *67*, 3075–3085. [[CrossRef](#)]
201. Sperandio, V.; Torres, A.G.; Giron, J.A.; Kaper, J.B. Quorum sensing is a global regulatory mechanism in enterohemorrhagic *Escherichia coli* O157:H7. *J. Bacteriol.* **2001**, *183*, 5187–5197. [[CrossRef](#)] [[PubMed](#)]
202. Cordonnier, C.; Thevenot, J.; Etienne-Mesmin, L.; Denis, S.; Alric, M.; Livrelli, V.; Blanquet-Diot, S. Dynamic in vitro models of the human gastrointestinal tract as relevant tools to assess the survival of probiotic strains and their interactions with gut microbiota. *Microorganisms* **2015**, *3*, 725–745. [[CrossRef](#)] [[PubMed](#)]
203. Minekus, M.; Marteau, P.; Havenaar, R.; Huis in 't Veld, J.H.J. A multicompartamental dynamic computer-controlled model simulating the stomach and small intestine. *Anglais* **1995**, *23*, 197–209.
204. Molly, K.; Vande Woestyne, M.; Verstraete, W. Development of a 5-step multi-chamber reactor as a simulation of the human intestinal microbial ecosystem. *Appl. Microbiol. Biotechnol.* **1993**, *39*, 254–258. [[CrossRef](#)] [[PubMed](#)]
205. Van de Wiele, T.; Van den Abbeele, P.; Ossieur, W.; Possemiers, S.; Marzorati, M. The simulator of the human intestinal microbial ecosystem (SHIME®). In *The Impact of Food Bioactives on Health: In Vitro and Ex Vivo Models*; Verhoeckx, K., Cotter, P., Lopez-Exposito, I., Kleiveland, C., Lea, T., Mackie, A., Requena, T., Swiatecka, D., Wichers, H., Eds.; Springer: Cham, Switzerland, 2015; pp. 305–317.
206. Van den Abbeele, P.; Roos, S.; Eeckhaut, V.; MacKenzie, D.A.; Derde, M.; Verstraete, W.; Marzorati, M.; Possemiers, S.; Vanhoecke, B.; Van Immerseel, F.; et al. Incorporating a mucosal environment in a dynamic gut model results in a more representative colonization by lactobacilli. *Microb. Biotechnol.* **2012**, *5*, 106–115. [[CrossRef](#)] [[PubMed](#)]
207. Etienne-Mesmin, L.; Livrelli, V.; Privat, M.; Denis, S.; Cardot, J.M.; Alric, M.; Blanquet-Diot, S. Effect of a new probiotic *Saccharomyces cerevisiae* strain on survival of *Escherichia coli* O157:H7 in a dynamic gastrointestinal model. *Appl. Environ. Microbiol.* **2011**, *77*, 1127–1131. [[CrossRef](#)] [[PubMed](#)]
208. Thevenot, J.; Cordonnier, C.; Rougeron, A.; Le Goff, O.; Nguyen, H.T.; Denis, S.; Alric, M.; Livrelli, V.; Blanquet-Diot, S. Enterohemorrhagic *Escherichia coli* infection has donor-dependent effect on human gut microbiota and may be antagonized by probiotic yeast during interaction with peyer's patches. *Appl. Microbiol. Biotechnol.* **2015**, *99*, 9097–9110. [[CrossRef](#)] [[PubMed](#)]
209. Thevenot, J.; Etienne-Mesmin, L.; Denis, S.; Chalancon, S.; Alric, M.; Livrelli, V.; Blanquet-Diot, S. Enterohemorrhagic *Escherichia coli* O157:H7 survival in an in vitro model of the human large intestine and interactions with probiotic yeasts and resident microbiota. *Appl. Environ. Microbiol.* **2013**, *79*, 1058–1064. [[CrossRef](#)] [[PubMed](#)]

210. Miszczycha, S.D.; Thevenot, J.; Denis, S.; Callon, C.; Livrelli, V.; Alric, M.; Montel, M.C.; Blanquet-Diot, S.; Thevenot-Sergentet, D. Survival of *Escherichia coli* O26:H11 exceeds that of *Escherichia coli* O157:H7 as assessed by simulated human digestion of contaminated raw milk cheeses. *Int. J. Food Microbiol.* **2014**, *172*, 40–48. [[CrossRef](#)] [[PubMed](#)]
211. Roussel, C.; Cordonnier, C.; Galia, W.; Le Goff, O.; Thevenot, J.; Chalancon, S.; Alric, M.; Thevenot-Sergentet, D.; Leriche, F.; Van de Wiele, T.; et al. Increased EHEC survival and virulence gene expression indicate an enhanced pathogenicity upon simulated pediatric gastrointestinal conditions. *Pediatr. Res.* **2016**, *80*, 734–743. [[CrossRef](#)] [[PubMed](#)]
212. Cordonnier, C.; Etienne-Mesmin, L.; Thevenot, J.; Rougeron, A.; Renier, S.; Chassaing, B.; Darfeuille-Michaud, A.; Barnich, N.; Blanquet-Diot, S.; Livrelli, V. Enterohemorrhagic *Escherichia coli* pathogenesis: Role of long polar fimbriae in peyer's patches interactions. *Sci. Rep.* **2017**, *7*, 44655. [[CrossRef](#)] [[PubMed](#)]
213. Deat, E.; Blanquet-Diot, S.; Jarrige, J.F.; Denis, S.; Beyssac, E.; Alric, M. Combining the dynamic TNO-gastrointestinal tract system with a Caco-2 cell culture model: Application to the assessment of lycopene and alpha-tocopherol bioavailability from a whole food. *J. Agric. Food Chem.* **2009**, *57*, 11314–11320. [[CrossRef](#)] [[PubMed](#)]
214. Marzorati, M.; Vanhoecke, B.; De Ryck, T.; Sadaghian Sadabad, M.; Pinheiro, I.; Possemiers, S.; Van den Abbeele, P.; Derycke, L.; Bracke, M.; Pieters, J.; et al. The HMI module: A new tool to study the host-microbiota interaction in the human gastrointestinal tract in vitro. *BMC Microbiol.* **2014**, *14*, 133. [[CrossRef](#)] [[PubMed](#)]
215. Bahrami, B.; Macfarlane, S.; Macfarlane, G.T. Induction of cytokine formation by human intestinal bacteria in gut epithelial cell lines. *J. Appl. Microbiol.* **2011**, *110*, 353–363. [[CrossRef](#)] [[PubMed](#)]
216. Dostal, A.; Gagnon, M.; Chassard, C.; Zimmermann, M.B.; O'Mahony, L.; Lacroix, C. Salmonella adhesion, invasion and cellular immune responses are differentially affected by iron concentrations in a combined in vitro gut fermentation-cell model. *PLoS ONE* **2014**, *9*, e93549. [[CrossRef](#)] [[PubMed](#)]



© 2018 by the authors. Licensee MDPI, Basel, Switzerland. This article is an open access article distributed under the terms and conditions of the Creative Commons Attribution (CC BY) license (<http://creativecommons.org/licenses/by/4.0/>).