



HAL
open science

Discontinuities in quinoa biodiversity in the dry Andes: an 18-century perspective based on allelic genotyping

Thierry Winkel, María Gabriela Aguirre, Carla Marcela Arizio, Carlos Alberto Aschero, María del Pilar Babot, Laure Benoit, Concetta Burgarella, Sabrina Costa-Tártara, Marie-Pierre Dubois, Laurène Gay, et al.

► To cite this version:

Thierry Winkel, María Gabriela Aguirre, Carla Marcela Arizio, Carlos Alberto Aschero, María del Pilar Babot, et al.. Discontinuities in quinoa biodiversity in the dry Andes: an 18-century perspective based on allelic genotyping. PLoS ONE, 2018, 13 (12), pp.e0207519. 10.1371/journal.pone.0207519 . hal-02621321

HAL Id: hal-02621321

<https://hal.inrae.fr/hal-02621321>

Submitted on 26 May 2020

HAL is a multi-disciplinary open access archive for the deposit and dissemination of scientific research documents, whether they are published or not. The documents may come from teaching and research institutions in France or abroad, or from public or private research centers.

L'archive ouverte pluridisciplinaire **HAL**, est destinée au dépôt et à la diffusion de documents scientifiques de niveau recherche, publiés ou non, émanant des établissements d'enseignement et de recherche français ou étrangers, des laboratoires publics ou privés.

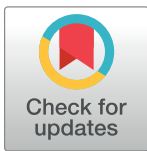


Distributed under a Creative Commons Attribution 4.0 International License

RESEARCH ARTICLE

Discontinuities in quinoa biodiversity in the dry Andes: An 18-century perspective based on allelic genotyping

Thierry Winkel^{1*}, María Gabriela Aguirre², Carla Marcela Arizio³, Carlos Alberto Aschero^{4,5}, María del Pilar Babot^{4,5}, Laure Benoit⁶, Concetta Burgarella⁷, Sabrina Costa-Tártara⁸, Marie-Pierre Dubois⁶, Laurène Gay⁷, Salomón Hocsmán^{4,5}, Margaux Jullien⁹, Sara María Luisa López-Campeny^{4,5}, María Marcela Manifesto³, Miguel Navascués^{10,11}, Nurit Oliszewski^{2,4}, Elizabeth Pintar¹², Saliha Zenboudji⁶, Héctor Daniel Bertero¹³, Richard Joffre⁶



1 Centre d'Écologie Fonctionnelle et Évolutive CEFE, Institut de Recherche pour le Développement IRD, CNRS, Université de Montpellier, Université Paul-Valéry Montpellier UPVM3, École Pratique des Hautes Études EPHE, Montpellier, France, **2** Facultad de Ciencias Naturales e Instituto Miguel Lillo, Universidad Nacional de Tucumán (FCN e IML, UNT), San Miguel de Tucumán, Argentina, **3** Instituto de Recursos Biológicos CIRN-INTA, Hurlingham, Buenos Aires, Argentina, **4** Instituto Superior de Estudios Sociales, Consejo Nacional de Investigaciones Científicas y Técnicas (ISES, CONICET), San Miguel de Tucumán, Argentina, **5** Instituto de Arqueología y Museo, Facultad de Ciencias Naturales e Instituto Miguel Lillo, Universidad Nacional de Tucumán (IAM, FCN e IML, UNT), San Miguel de Tucumán, Argentina, **6** Centre d'Écologie Fonctionnelle et Évolutive CEFE, CNRS, Université de Montpellier, UPVM3, EPHE, IRD, Montpellier, France, **7** UMR AGAP Amélioration Génétique et Adaptation des Plantes Méditerranéennes et Tropicales, CIRAD, INRA, SupAgro, Montpellier, France, **8** Departamento de Tecnología, Universidad Nacional de Luján, Luján, Buenos Aires, Argentina, **9** UMR AGAP Amélioration Génétique et Adaptation des Plantes Méditerranéennes et Tropicales, INRA, CIRAD, SupAgro, Montpellier, France, **10** Centre de Biologie pour la Gestion des Populations CBGP, INRA, IRD, CIRAD, SupAgro, Montpellier, France, **11** Institut de Biologie Computationnelle IBC, Montpellier, France, **12** Social Sciences Division, Austin Community College, Austin, Texas, United States of America, **13** Cátedra de Producción Vegetal, Facultad de Agronomía, Universidad de Buenos Aires, and IFEVA-CONICET, Buenos Aires, Argentina

* thierry.winkel@ird.fr

OPEN ACCESS

Citation: Winkel T, Aguirre MG, Arizio CM, Aschero CA, Babot MdP, Benoit L, et al. (2018) Discontinuities in quinoa biodiversity in the dry Andes: An 18-century perspective based on allelic genotyping. PLoS ONE 13(12): e0207519. <https://doi.org/10.1371/journal.pone.0207519>

Editor: Eric Jellen, Brigham Young University, UNITED STATES

Received: April 6, 2018

Accepted: October 30, 2018

Published: December 5, 2018

Copyright: © 2018 Winkel et al. This is an open access article distributed under the terms of the [Creative Commons Attribution License](https://creativecommons.org/licenses/by/4.0/), which permits unrestricted use, distribution, and reproduction in any medium, provided the original author and source are credited.

Data Availability Statement: All relevant data are within the paper and its Supporting Information files.

Funding: This research was funded by ECOS-Sud (Grant A11B03), CNRS-PEPS-INEE (Grant BFC 85508), and PIP-CONICET (Grant 464). It also benefited from the IBC, a multidisciplinary project "Investissements d'Avenir" managed by the University of Montpellier. The funders had no role in study design, data collection and analysis,

Abstract

History and environment shape crop biodiversity, particularly in areas with vulnerable human communities and ecosystems. Tracing crop biodiversity over time helps understand how rural societies cope with anthropogenic or climatic changes. Exceptionally well preserved ancient DNA of quinoa (*Chenopodium quinoa* Willd.) from the cold and arid Andes of Argentina has allowed us to track changes and continuities in quinoa diversity over 18 centuries, by coupling genotyping of 157 ancient and modern seeds by 24 SSR markers with cluster and coalescence analyses. Cluster analyses revealed clear population patterns separating modern and ancient quinoas. Coalescence-based analyses revealed that genetic drift within a single population cannot explain genetic differentiation among ancient and modern quinoas. The hypothesis of a genetic bottleneck related to the Spanish Conquest also does not seem to apply at a local scale. Instead, the most likely scenario is the replacement of preexisting quinoa gene pools with new ones of lower genetic diversity. This process occurred at least twice in the last 18 centuries: first, between the 6th and 12th centuries—a time of agricultural intensification well before the Inka and Spanish conquests—and then between the 13th century and today—a period marked by farming marginalization

decision to publish, or preparation of the manuscript.

Competing interests: The authors have declared that no competing interests exist.

in the late 19th century likely due to a severe multidecadal drought. While these processes of local gene pool replacement do not imply losses of genetic diversity at the metapopulation scale, they support the view that gene pool replacement linked to social and environmental changes can result from opposite agricultural trajectories.

Introduction

The Andes, a global hotspot of past and present crop biodiversity, has witnessed huge environmental and socio-cultural changes, including the climatic fluctuations of the late Holocene and the disruption of native societies following the Spanish Conquest [1–3]. Less dramatically, progressive changes in agricultural knowledge and practices have ensured the resilience of Andean societies to date [4–6]. Amid these historical changes, several Andean-origin crops have diversified and were successfully disseminated throughout the world, such as tomato (*Solanum lycopersicum*), potato (*S. tuberosum*), beans (*Phaseolus* spp.), chiles (*Capsicum* spp.) and, more recently, quinoa (*Chenopodium quinoa*) [7].

In the Central Andes of Peru and northern Bolivia, the rise and fall of past agrarian societies due to political and environmental changes seems a most likely scenario [8–10]. But in the dry Andes of Northwest Argentina, southern Bolivia and northern Chile (Fig 1A), a different historical trajectory took place due to the relative importance of pastoralism versus agriculture [11] (Table A in S1 Appendix). Around 5000 BP (years before present) pastoralism arose among local hunter-gatherers who had been established in the region since 12000 BP [12,13]. These hunter-gatherers in transition to food production also developed crop planting early in the dry Andes, as evidenced by remains of plant domesticates dating back ca 5000 BP [14,15]. Farming was a productive practice in the region at that time and until the Inka period and the Spanish conquest, though without reaching a comparable level of significance to that observed in the Central Andes [16, 17]. Then, at a still uncertain time during the Colonia and early Republic periods (*viz.* 16th to 19th centuries), agrarian systems in the most arid highlands reverted to a primarily pastoralist economy, wherein small-scale crop farming assumed a limited role, a situation that persists today [18]. Palaeoecological studies revealed that substantial Holocene fluctuations in the regional climate likely coincided with these socio-historical changes [19–22]. Two relatively humid periods (12000–8000 BP and 5000–1500 BP) alternated with drier periods (8000–5000 BP and 1500 BP to the Present); during the dry phases water resources concentrated in some valleys and basins [23].

The question then arises as to how these social and environmental changes affected local crop biodiversity throughout this period. Specifically, have climatic and agrarian changes—and their related transformations in social structures and local economy—led to genetic changes in native crop species? The quinoa crop in the dry Andes of Argentina provides a case study for investigating these issues since local conditions of low temperature and air dryness allowed for the conservation of abundant biological material in what once were residential places, granaries or tombs [24,25]. In modern quinoa samples, molecular markers reveal a diversity essentially shaped by broad biogeographic features separating—among others—quinoas from temperate highlands, arid highlands, mid- and high-altitude valleys, and western versus eastern lowlands [26]. Molecular genotyping, applied to ancient samples, should thus allow for tracking quinoa biodiversity in space and time, providing a new tool to investigate the agrarian economy of past societies and go further in-depth into the history of human-plant relationships [27].

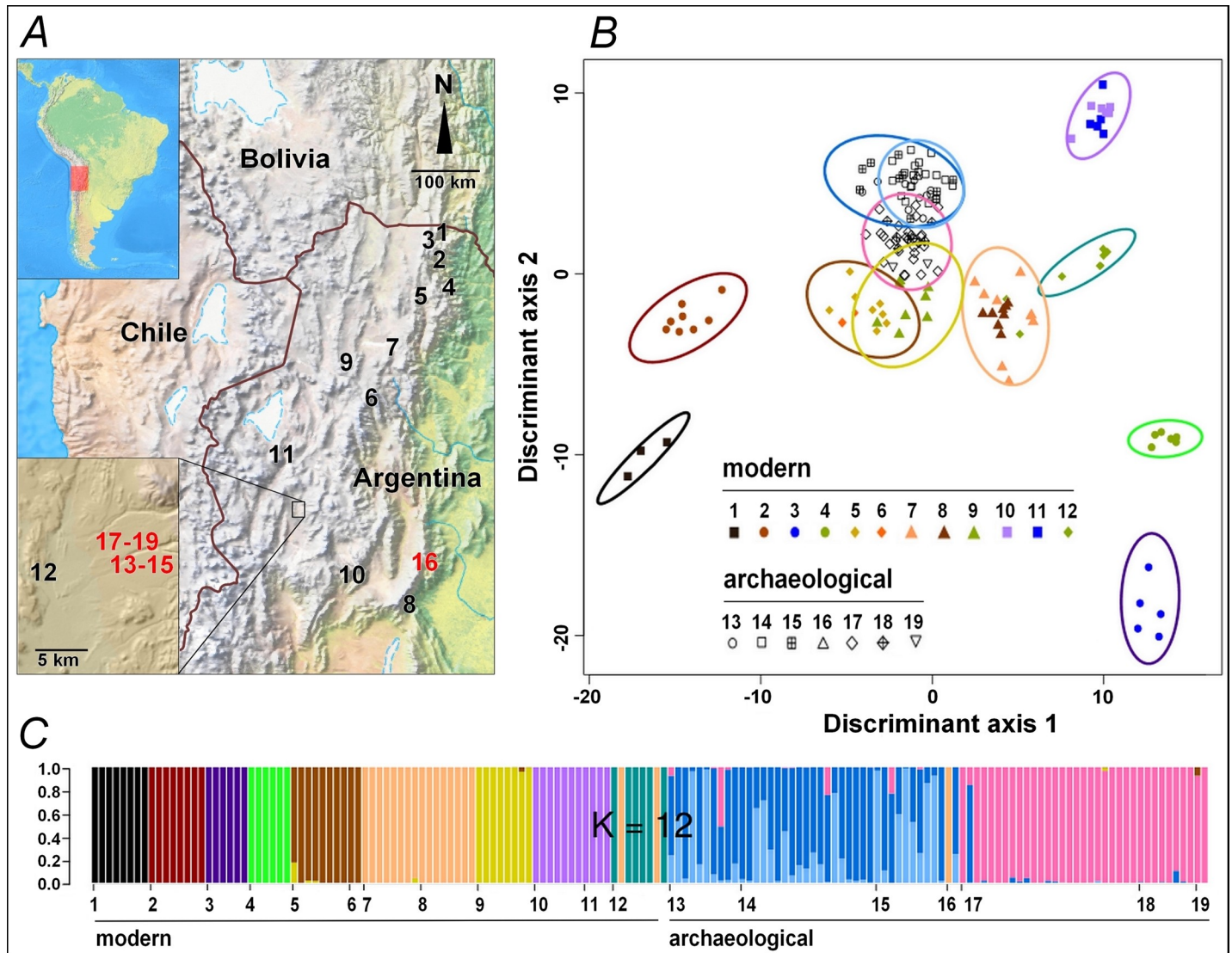


Fig 1. Geographic localization and genetic classification of ancient and modern quinoas collected in Northwest Argentina. (A): Map of the dry Andes localizing ancient and modern quinoa samples (red and black numbers, respectively; detailed sample description in Table B in S1 Appendix). (B): Scatterplot of the Discriminant Analysis of Principal Components (DAPC). Individuals are represented by symbols according to their sample of origin; colored inertia ellipses define the clusters identified with a k-means algorithm for $k = 12$. (C): Individual assignment probability to each cluster from DAPC. Horizontal axis shows the sample codes as in A and B; vertical axis shows the assignment probabilities for $k = 12$.

<https://doi.org/10.1371/journal.pone.0207519.g001>

Analyzing genetic markers within a coalescence framework, we track changes and continuities in quinoa diversity in the dry Andes over the last two millennia. Coalescence theory allows to identify the most probable trajectory among the many possible genealogies in a regional gene pool [28]. Then we discuss how natural and human circumstances paralleling these temporal patterns in genetic diversity could explain them. Our archaeological study sites are located in cold and arid highlands, with one site in a mesothermic Andean valley located at the same latitude (Fig 1A, Table B in S1 Appendix) [12,14,17,29]. They provided well-preserved quinoa seeds, with a broad chronological range spanning the time of early husbandry (*ca* 1800 BP), to periods of stable agro-pastoralist societies (*ca* 1400 BP) and complex corporative societies (*ca* 800–700 BP). To evaluate the relationship of these ancient quinoas with the present-

day germplasm, we studied a reference panel of quinoas collected in 2006–2007 from different environments in the Andean highlands of Argentina [26,30] (Fig 1A, Table B in S1 Appendix). Some archaeological sites supplied both dark and white seeds, which allowed us to explore the diversity of cultivated quinoa (generally white-seeded) and their weedy relatives (all dark-seeded).

Results

Genetic diversity, selfing rates and genetic structure were studied from 157 quinoa seeds (76 ancient, 81 modern) genotyped at 24 microsatellite loci (see Section C in S1 Appendix for detailed results).

Genetic diversity and selfing rate

Estimates of the diversity indices and the selfing rates of the 19 populations sampled are summarized in Table E in S1 Appendix. Expected heterozygosity (H_e) in the subset of modern quinoas showed highly variable values (range 0.02–0.70), consistent with those found in an independent study on the same samples [26]. Similarly, selfing rates ($s(F_{is})$ and $s(LnL)$) appear highly variable without any clear geographical pattern. Comparing quinoa samples through time at Antofagasta de la Sierra (hereafter: Antofagasta) shows a trend towards lower allelic diversity ($N_{all-rar}$) and expected heterozygosity (H_e) in the modern sample (#12) compared to the ancient ones (#13–15,17–19). Selfing rate ($s(LnL)$) increased significantly ($P < 0.05$) from the most ancient samples (#17–18) to the intermediate (#13–14) and modern ones (#12).

Genetic structure in time and space

The discriminant analysis reveals a neat distinction between ancient and modern samples, ancient samples showing little affinity to modern samples, particularly for the geographically closer sample #12 (Fig 1B, Table F in S1 Appendix). Among modern samples, genetic structure reflected the geographical sampling, with most samples showing a marked identity (Fig 1B–1C, Figures D and E in S1 Appendix). Some sites showed strong affinities between them with a clear ecogeographical link (samples #1,2 are from NE humid valleys, and samples #10,11 from arid highlands) while others are more difficult to interpret in simple ecogeographical terms (sample #8, from a mid-altitude mesothermic valley, shows strong affinity to sample #7, from cold and arid highlands).

Among ancient samples, genetic structure is associated to the age of the seeds. The two main clusters identified separate the more recent samples (#13–15) from the older samples (#17–19) (Fig 1B, Figures D and E in S1 Appendix). Affinities of sample #16 are unclear as it is composed of only two seeds with very different genotypes and from a geographically distant location. Although collected from residential or storage places, or from ritual deposits, all likely to have received seeds from various fields or sites, the ancient samples (#13–19) each showed a fairly high homogeneity, similar to that of modern samples collected in separate fields. Samples #13–15 (*ca* 690–796 cal BP) grouped together in spite of differences in seed color (#13,14 are white, #15 is dark). The two seeds from sample #16 (*ca* 1270 cal BP) were assigned to this same group. Samples #17 and 18 (*ca* 1364 cal BP) were assigned to a distinct group, which also included the oldest sample #19 (*ca* 1796 cal BP), being differently colored (#17,19 are white, #18 is dark). Interestingly, additional structure analysis separates dark-seeded quinoa samples (#15,18) and white-seeded samples from the same age and locality (#14,17 respectively) (Figure E in S1 Appendix, $k = 12$). Yet the wild-form samples remain genetically close to the white-seeded samples of their respective time x location set.

Inference of local demographic history

At Antofagasta, one modern sample and six ancient samples offer a temporal series covering almost two millennia. Analyses of genetic structure of these samples reveal three main genetic groups: modern (#12), intermediate (#13–15), and ancient (#17–19) (Fig 1C). The differentiation among them could be due to genetic drift between sampling times within a single population or to divergence among distinct populations that locally arrive at different times, replacing the preexisting genetic pool. In order to distinguish between these two alternative processes we built demographic scenarios in which the two temporal and genetic discontinuities are either simulated as genetic drift within a single population (Fig 2A), or mixtures of drift and replacement (Fig 2B–2D). As dark seed quinoa samples (#15,18) show some differentiation from white seeds (see Figure D for $k = 14$ and Figure E for $k = 9$ or higher in S1 Appendix), two additional scenarios were tested: one differentiating between cultivated and wild compartments (Fig 2E), the other considering an admixture event between both compartments (Fig 2F).

The coalescence analysis clearly identifies as the model with the best fit (votes = 0.92, posterior probability = 0.99) the demographic scenario in which three genetic clusters belong to three separate cultivated gene pools, with gene flow from a wild compartment producing dark seeds (Fig 2F). We estimated effective population sizes for the 3 quinoa samples around few 100 individuals and around 30 individuals for the wild gene pool (Table G in S1 Appendix). Admixture proportions from the wild pool of dark seeds was high but lower than 0.5 (point estimates and 95% highest posterior density intervals are reported in Table G in S1 Appendix). Posterior probability distributions for other parameters of the model (e.g. ancestral population effective size, time of divergence) were indistinguishable from priors (Table G in S1 Appendix).

Discussion

Using a coalescent-based approach, this study provides the first evidence of a significant change in the demographic history of quinoa in the Andes over 18 centuries. The analysis of modern and ancient samples from Antofagasta reveals that genetic differentiation among samples from different times cannot be explained by genetic drift. Instead, the most likely scenario in this locality is the replacement of preexisting quinoa gene pools with new exogenous gene pool. This process occurred at least twice in the last 18 centuries: first, between 1364 and 796 cal BP, well before the Inka and Spanish conquests—respectively initiated 568 and 483 years ago in Northwest Argentina [31]—, and then between 690 cal BP and today, an interval of time covering the Inka, Colonial and Republican periods. The general assumption of successive genetic bottlenecks for the Andean quinoa—related to the initial events of hybridization and domestication, and then to the Spanish Conquest [32]—thus does not seem to apply at a local scale. This should be tracked back now over a larger geographic area, particularly the Central Andes where less extreme climatic conditions and a distinct socio-historical context might have led to other patterns of genetic change in quinoa. In the dry Andes, these two events of gene pool replacement appeared associated with quite different socio-environmental dynamics, namely: a phase of *agricultural intensification* initiated 1100 years ago followed by an opposite phase of *farming marginalization* in the Colonial and Republican periods.

Intensification of agriculture

Intensification of agriculture by local societies starting 1100 BP was contemporary to the increasing aridity, which reduced water availability for crops and pastures in the region [13,17]. Large irrigation infrastructures were then established, probably associated with an

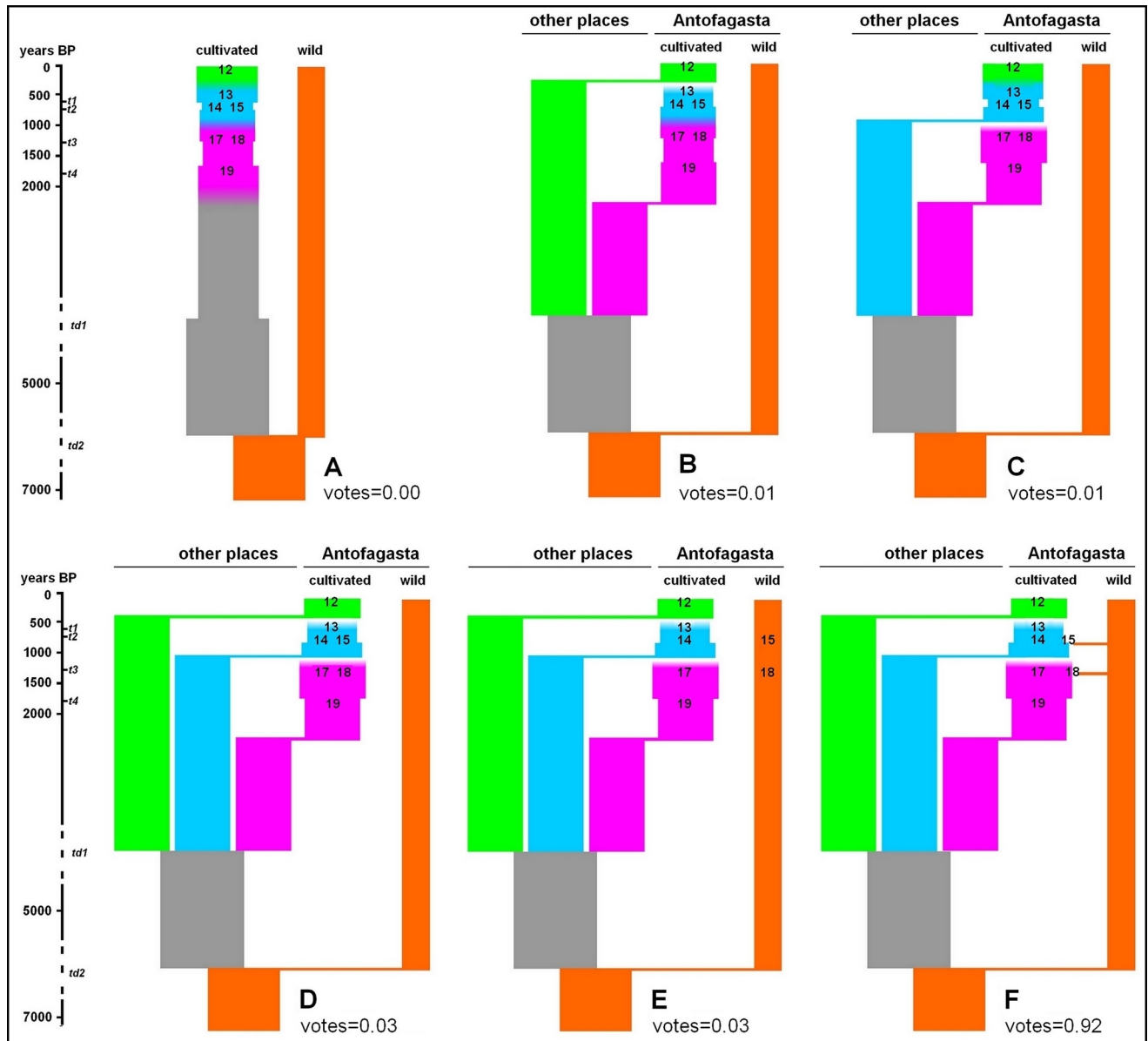


Fig 2. Graphical representation of alternative genetic relationships between modern and ancient quinoas from Antofagasta. The coalescence-based modeling examined six scenarios: (A) direct chronological filiation between all samples, mixing cultivated and wild forms, (B) replacement of all ancient quinoas by modern quinoas, (C) filiation between modern quinoas and intermediate ancient quinoas, both replacing the oldest quinoas, (D) successive replacement of the three groups of quinoas: modern, intermediate, ancient, (E) same scenario as previously but differentiating between cultivated and wild forms, (F) same scenario as previously but with admixture between cultivated and wild forms. Numbers in bold refer to modern (#12) and ancient quinoa samples (#13–15, 17–19) described in Table B in *S1 Appendix*. Vertical axis shows years BP with present at the top. Proportion of votes received from the random forest classification of the observed data is shown for each model. t_n and td_n are time parameters used in the approximate Bayesian computation analysis (see Table G in *S1 Appendix*).

<https://doi.org/10.1371/journal.pone.0207519.g002>

increase in population density [29]. Although rare in the region, these intensified crop-pasture systems allowed to expand the productive land area from small humid river banks to broader alluvial terraces [33]. Adaptation of quinoa to these new climate and farming conditions could have occurred in two ways: either by local selection for ever more drought-tolerant variants or variants apt for new intensified fields, or directly by replacing local varieties with new ones from other regions. Our model of quinoa demographic history in Antofagasta showing the

introduction of a new gene pool in the 1364–796 BP period (Fig 2F) is congruent with the second hypothesis, and concurs with the intense interregional connections at that time [29]. The grouping of samples #13–15 from Antofagasta with sample #16 from mesothermal valleys (Fig 1B–1C) suggests that the same gene pool might have circulated between dry highlands and valleys in the 1270–690 BP period.

As reported in other Andean regions [34], modern weedy (dark-seeded) quinoa appeared genetically related to sympatric cultivated (white-seeded) quinoa populations. Black chenopod seeds are generally assigned to the weed sub-species *Ch. quinoa* ssp. *melanospermum* and their relative frequency in archaeological remains is indicative of the degree of seed selection by past cultivators [35,36]. The presence of dark seeds (#15,18) in archaeological food processing places suggests the prolonged use of a combination of domesticated and weed chenopod grains by past populations in Northwest Argentina [37], a feature also observed elsewhere in the Americas [36,38].

Another likely cause of the changes in quinoa demographic history relates to evidence of a generalized warfare in the dry Andes in the 750–600 BP period [11,39,40], a situation exacerbated by the competition for scarce water resources [11,40], likely disturbing local seed-supply networks. Compared to the previous social system based on small villages, more complex and authority-centered societies at that time [41,42] could also have impacted on seed availability and circulation in a trend towards less diverse crop practices and genetic resources.

In this context of coincident changes in climate, crop technology and society, our estimates of effective population size (Table G in S1 Appendix) suggest that the quinoa gene pool cultivated at Antofagasta ca 796–690 BP (samples #13,14) had a narrower genetic base and higher selfing rates than in the previous periods (samples #17,19). As the scenario of genetic drift within a single population is rejected by the coalescent-based analyses, the lower diversity of the cultivated quinoa at Antofagasta ca 796–690 BP is explained more by the displacement of local varieties by introduced ones with a narrower genetic base than by alternative hypotheses of enhanced selection for new cropping systems or loss of genetic resources due to endemic political unrest. In this perspective, agricultural intensification with newly introduced varieties can be considered as a risk-buffering strategy developed by ancient Andean peoples who, like other societies in the world, sought to ensure food security in a context of rising population, political conflicts and deteriorating climate [43,44]. This observation supports the idea that social and environmental stress can stimulate cultural innovation [4,16]. The brief Inka rule at this extreme end of the Andes continued this process of agricultural intensification as suggested by the appearance of large, albeit scattered, terrace and irrigation systems in the region [17,45].

Crop farming marginalization

Crop farming marginalization in the Andean highlands has been frequently attributed to the Spanish conquest [46–48]. Undeniably, the European intrusion affected the structure of native societies and their subsistence systems across the Andes, including local farming activities [2,49–51]. Still, in the dry Andes the new mercantilist order prioritizing mining and caravan trading remained dependent on local crop-pasture systems for its food and forage supply [52,53]. Recent studies report the continuation, after the Spanish conquest, of local crop-pasture systems and food-storage facilities which allowed native populations in the remote highlands of Northwest Argentina to preserve relative autonomy and control over natural resources during the Colonial and Republican periods [33]. Yet, these persisting crop-pasture systems stood vulnerable to climatic variations. A multidecadal drought in the 1860–1890s caused a severe mortality in the region [54], likely affecting local agriculture. Immediately after that time, socioecological changes related to emergent industrialization, urbanization, and

globalization led to further rural depopulation and cropland abandonment throughout the 20th century [18]. Under these cumulative factors, the relatively intensified crop-pasture systems built up during the pre-Hispanic period—and partly maintained until the 19th century—were dismantled in the study area and local agriculture returned to small-scale cropping and extensive pastoralism. In some southern highlands, intensified agricultural fields could have fallen into disuse much earlier—late 18th century or earlier—due to an emphasis on animal husbandry, whereas crop production continued as an important activity in the neighboring mesothermal valleys [50]. We found that in the Colonial and Republican periods, a second event of gene pool replacement occurred in the quinoa cultivated at Antofagasta, which resulted in local quinoa gene pools of lower allelic diversity (Table E in [S1 Appendix](#)). As shown by population genetics theory [55], such a process of local gene pool replacement does not necessarily imply a loss of genetic diversity through time at the metapopulation scale. It does, however, support the view that gene pool replacement linked to social and environmental changes can result from opposite trajectories of agricultural intensification or marginalization. Such historical shifts in farming activities are characteristic of agriculture in extreme environments [37,56,57] and not only in remote times [58,59].

Material and methods

See [S1 Appendix](#) for an extended version of the methods.

Seed sample collection, archaeological material and datings

Ancient and modern quinoa seed samples were collected from the sites described in [Fig 1A](#) and Table B in [S1 Appendix](#). Archaeologists collected intact, non-charred samples of ancient quinoa in five sites related to agro-pastoralist societies from Northwest Argentina, covering the time span 1796–690 BP (detailed description in Section A in [S1 Appendix](#)). Four of the archaeological sites are located in arid highlands near the town of Antofagasta de la Sierra (Catamarca province): Cueva Salamanca 1 (sample #19; [60]), Punta de la Peña 9 (samples #17,18), Punta de la Peña E (samples #14,15), and Punta de la Peña 4 (sample #13; [61]). The fifth site, Cueva de los Corrales 1 (sample #16; [62]) corresponds to an area of mesothermal valleys in the Tucuman province. Sedimentary samples containing exceptionally preserved ancient quinoa remains from these sites were submitted to laboratory separation and concentration techniques (dry sieving and picking under magnifying glass) shortly before AMS dating and molecular analysis of seeds. In 2006–2007, an independent research team collected modern quinoa seed samples from 12 sites representative of different environments in the Andean highlands and valleys of Argentina [26,30]. Ancient and modern quinoa seeds were not in contact during their sampling, storage and manipulations.

DNA extraction, microsatellite genotyping, and genetic data analysis

We extracted DNA from 81 modern and 144 ancient quinoa seeds according to the procedures described in Section C in [S1 Appendix](#). DNA extraction was successful for all the modern seeds, while we recovered well-preserved DNA from only 76 ancient seeds (53%). To avoid contamination between ancient and modern DNA, we rigorously separated in time and space all the DNA extraction, DNA quality control and microsatellite amplification procedures detailed in Section C in [S1 Appendix](#). We started by working on the ancient archaeological quinoas in a specific laboratory dedicated to ancient DNA. Once all the extractions and amplifications of ancient quinoa seeds were completed, we then proceeded to the extraction and amplification of modern quinoas in a distant laboratory, without any spatial connection with the previous one.

Ancient and modern quinoas were genotyped using 24 microsatellite loci (Table C in [S1 Appendix](#)). We did not find an ancient genotype identical to any other ancient or modern genotype, which proves the absence of contamination (see Section C in [S1 Appendix](#)). Descriptive genetic diversity (allelic richness, heterozygosity), inbreeding fixation coefficient (F_{IS}) and genetic differentiation (F_{ST}) were calculated in R using the packages *adegenet* and *hierfstat* [63,64]. The number of multilocus genotypes (*MLGs*) was computed in R using the package *poppr* [65]. Diversity indexes were standardized using a rarefaction approach in *ADZE* [66]. We estimated selfing rates for each sample in two independent ways, either from F_{IS} , or using the maximum likelihood approach implemented in *RMES* (see Section C in [S1 Appendix](#)). The genetic structure of the samples was examined using the program *STRUCTURE* [67], principal component analysis (PCA), and discriminant analysis of principal components (DAPC) using *adegenet*. An approximate Bayesian computation approach using random forests (ABC-RF) [68,69] was used to evaluate alternative models of demographic history of quinoa found around Antofagasta where one modern (#12) and six ancient seed samples (#13–15,17–19) offer a temporal series covering 18 centuries. A classification vote system, which represents the frequency of each alternative model in the collection of classification trees, identified the model best suited to the observed dataset [68].

Supporting information

S1 Appendix. Section A. ARCHAEOLOGICAL SITE DESCRIPTION

Table A. Succinct chronology of climatic and social changes in the Southern dry Andes.

Section B. SEED SAMPLE DESCRIPTION

Table B. Seed sample description.

Section C. DNA EXTRACTION, SIMPLE SEQUENCE REPEAT GENOTYPING, ANCIENT DNA QUALITY CONTROL, AND POPULATION GENETIC ANALYSIS

Table C. Microsatellite loci, allele expected size, observed size range, allele number, and missing data points in modern ($n = 81$) and ancient ($n = 76$ successfully genotyped out of 144) quinoa seed samples.

Table D. Percentage of missing data per successfully genotyped quinoa seed sample, calculated across 24 microsatellite loci.

Table E. Diversity and selfing rates in the 19 studied quinoa seed samples.

Table F. Pairwise F_{ST} values between samples.

Table G. Prior and posterior probability distribution of model parameters for the approximate Bayesian computation analysis.

Figure A. Sequence alignment from QAAT024 locus alleles of 4 modern (EST and CHEN458 samples) and 4 ancient (AP9 and PPE samples) quinoa genotypes.

Figure B. Sequence alignment from QAAT087 locus alleles of one modern (CHEN 420) and three ancient (PPE, ACS, AP9) genotypes.

Figure C. Inference of number of clusters in DAPC.

Figure D. Individual assignment probability to each group from Discriminant Analysis of Principal Components (DAPC).

Figure E. Individual assignment probability to each group from *STRUCTURE*.

Figure F. First two principal components for the Principal Component Analysis (PCA) (PDF)

S1 File. SEED SAMPLE ALLELIC PROFILES (ReadMe). S1-File-WINKEL-et-al-Allelic-profiles-ReadMe.

(PDF)

S2 File. SEED SAMPLE ALLELIC PROFILES. (Dataset). S2-File-WINKEL-et-al-Allelic-profiles-Dataset-(2018-04-05). (CSV)

Acknowledgments

All necessary permits were obtained for the described study, which complied with all relevant regulations. Archaeological field surveys received permits from the "Dirección de Patrimonio Cultural, Ente Cultural de Tucumán, Gobierno de la provincia de Tucumán, Argentina" and the "Dirección Provincial de Antropología, Gobierno de la Provincia de Catamarca, Argentina". The export of ancient quinoa seeds for their analysis at CEFÉ received permit from the "Registro Nacional de Yacimientos, Colecciones y Objetos Arqueológicos, Instituto Nacional de Antropología y Pensamiento Latinoamericano, Argentina" (RENYCOA-INAPL). We thank Christelle Tougard and Claudine Montgelard for helpful advices in analyzing ancient DNA. We further thank Philippe Jarne and Eric Jellen for constructive comments on the manuscript.

Author Contributions

Conceptualization: Thierry Winkel, María del Pilar Babot, Héctor Daniel Bertero, Richard Joffre.

Formal analysis: María Gabriela Aguirre, Carla Marcela Arizio, Laure Benoit, Concetta Burgarella, Sabrina Costa-Tártara, Laurène Gay, Margaux Jullien, María Marcela Manifesto, Miguel Navascués, Saliha Zenboudji.

Funding acquisition: Héctor Daniel Bertero, Richard Joffre.

Investigation: María Gabriela Aguirre, Carla Marcela Arizio, Carlos Alberto Aschero, María del Pilar Babot, Sabrina Costa-Tártara, Marie-Pierre Dubois.

Methodology: Carla Marcela Arizio, Laure Benoit, Marie-Pierre Dubois, María Marcela Manifesto, Miguel Navascués.

Resources: Carlos Alberto Aschero, Sabrina Costa-Tártara, Salomón Hocsman, Sara María Luisa López-Campeny, Miguel Navascués, Nurit Oliszewski, Elizabeth Pintar, Richard Joffre.

Supervision: Thierry Winkel, María del Pilar Babot, Héctor Daniel Bertero, Richard Joffre.

Writing – original draft: Thierry Winkel, María Gabriela Aguirre, Carla Marcela Arizio, María del Pilar Babot, Laure Benoit, Miguel Navascués, Héctor Daniel Bertero, Richard Joffre.

Writing – review & editing: Thierry Winkel, María del Pilar Babot, María Marcela Manifesto, Miguel Navascués, Héctor Daniel Bertero, Richard Joffre.

References

1. Binford MW, Kolata AL, Brenner M, Janusek JW, Seddon MT, Abbott M, et al. Climate variation and the rise and fall of an Andean civilization. *Quatern Int.* 1997; 47:235–48.
2. Contreras DA. Landscape and Environment: Insights from the Prehispanic Central Andes. *J Archaeol Res.* 2010; 18:241–88.
3. Ortloff CR, Kolata AL. Climate and collapse—agroecological perspectives on the decline of the Tiwanaku state. *J Archaeol Sci.* 1993; 20:195–221.
4. Craig N. Cultural dynamics, climate, and landscape in the South-Central Andes during the mid-late Holocene: a consideration of two socio-natural perspectives. *Chungara.* 2011; 43:367–91.

5. Winkel T, Bommel P, Chevarría-Lazo M, Cortes G, Del Castillo C, Gasselin P, et al. Panarchy of an indigenous agroecosystem in the globalized market: The quinoa production in the Bolivian Altiplano. *Glob Environ Change*. 2016; 39:195–204.
6. Zimmerer KS. The compatibility of agricultural intensification in a global hotspot of smallholder agrobiodiversity (Bolivia). *Proc Natl Acad Sci USA*. 2013; 110:2769–74. <https://doi.org/10.1073/pnas.1216294110> PMID: 23382215
7. Pearsall DM. Plant domestication and the shift to agriculture in the Andes. In: Silverman H, Isbell WH, editors. *The Handbook of South American Archaeology*. New York, USA: Springer; 2008. p. 105–20.
8. Chepstow-Lusty AJ, Frogley MR, Bauer BS, Leng MJ, Boessenkool KP, Carcaillet C, et al. Putting the rise of the Inca Empire within a climatic and land management context. *Clim Past*. 2009; 5:375–88.
9. Dillehay TD, Kolata AL. Long-term human response to uncertain environmental conditions in the Andes. *Proc Natl Acad Sci USA*. 2004 Mar; 101:4325–30. ISI:000220472200061. <https://doi.org/10.1073/pnas.0400538101> PMID: 15024122
10. Fehren-Schmitz L, Haak W, Maechtle B, Masch F, Llamas B, Tomasto Cagigao E, et al. Climate change underlies global demographic, genetic, and cultural transitions in pre-Columbian southern Peru. *Proc Natl Acad Sci USA*. 2014; 111:9443–8. <https://doi.org/10.1073/pnas.1403466111> PMID: 24979787
11. Nielsen AE. Pastoralism and the non-pastoral world in the Late Pre-Columbian history of the Southern Andes (1000–1535). *Nomadic Peoples*. 2009; 13:17–35.
12. Aschero CA, Hocsman S. Arqueología de las ocupaciones cazadoras-recolectoras de fines del Holoceno medio de Antofagasta de la Sierra (puna meridional argentina). *Chungara*. 2011; 43:393–411.
13. Morales M, Barberena R, Belardi JB, Borrero L, Cortegoso V, Duran V, et al. Reviewing human-environment interactions in arid regions of southern South America during the past 3000 years. *Paleogeogr Paleoclimatol Paleoecol*. 2009; 281:283–95.
14. Babot MP. Cazadores-recolectores de los Andes centro-sur y procesamiento vegetal: una discusión desde la puna meridional argentina (ca. 7.000–3.200 años A.P.). *Chungara*. 2011; 43:413–32.
15. Planella MT, Scherson R, McRostie V. Sitio El Plomo y nuevos registros de cultígenos iniciales en cazadores del Arcaico IV en Alto Maipo, Chile central. *Chungara*. 2011; 43:189–202.
16. Cruz P, Winkel T, Ledru M-P, Bernard C, Egan N, Swingedouw D, et al. Rain-fed agriculture thrived despite climate degradation in the pre-Hispanic arid Andes. *Sci Adv*. 2017; 3:e1701740. <https://doi.org/10.1126/sciadv.1701740> PMID: 29279865
17. Salminci P, Tchilinguirian P, Lane K. Bordos and boundaries: sustainable agriculture in the high altitude deserts of Northwest Argentina, AD 850–1532. *J Anthropol Archaeol*. 2014; 2:189–218.
18. Izquierdo AE, Grau HR. Agriculture adjustment, land-use transition and protected areas in Northwestern Argentina. *J Environ Manage*. 2009; 90:858–65. <https://doi.org/10.1016/j.jenvman.2008.02.013> PMID: 18439743
19. Alcalde JA, Kulemeyer JJ. The Holocene in the South-Eastern region of the Province Jujuy, North-West Argentina. *Quatern Int*. 1999; 57–8:113–6.
20. Lupo LC, Bianchi MM, Araoz E, Grau R, Lucas C, Kern R, et al. Climate and human impact during the past 2000 years as recorded in the Lagunas de Yala, Jujuy, northwestern Argentina. *Quatern Int*. 2006; 158:30–43.
21. Ratto N, Montero C, Hongn F. Environmental instability in western Tinogasta (Catamarca) during the Mid-Holocene and its relation to the regional cultural development. *Quatern Int*. 2013; 307:58–65.
22. Schitteck K, Kock ST, Lücke A, Ohlendorf C, Kulemeyer JJ, Lupo LC, et al. Environmental and climatic history in the NW Argentine Andes (24° S) over the last 2100 years inferred from a high-altitude peatland record. *Clim Past*. 2015; 11:2037–76.
23. Tchilinguirian P, Olivera DE. Late quaternary paleoenvironments, south Andean puna (25°–27° S), Argentina. In: Pintar E, editor. *Hunter-gatherers from a high-elevation desert: people of the Salt Puna: Northwest Argentina*. Oxford, UK: Archaeopress; 2014. p. 43–69.
24. Babot P, Hocsman S. Quinoa: a millenary grain in Northern Argentina. In: Selin H, editor. *Encyclopaedia of the History of Science, Technology, and Medicine in Non-Western Cultures*. Dordrecht, The Netherlands: Springer; 2015.
25. Lopez LM, Recalde AM. The first quinoa (*Chenopodium quinoa* Willd) macrobotanical remains at Sierras del Norte (Central Argentina) and their implications in pre-Hispanic subsistence practices. *J Archaeol Sci Reports*. 2016; 8:426–33.
26. Costa Tartara SM, Manifesto MM, Bramardi SJ, Bertero HD. Genetic structure in cultivated quinoa (*Chenopodium quinoa* Willd.), a reflection of landscape structure in Northwest Argentina. *Conserv Genet*. 2012; 13:1027–38.

27. Zeder MA, Emshwiller E, Smith BD, Bradley DG. Documenting domestication: the intersection of genetics and archaeology. *Trends Genet.* 2006; 22:139–55. <https://doi.org/10.1016/j.tig.2006.01.007> PMID: 16458995
28. Nordborg M. Coalescent theory. In: Baldin GJ, Bishop M, C. C, editors. *Handbook of Statistical Genetics* 3rd edition. Chichester, UK: John Wiley & Sons; 2007. p. 843–77.
29. Tchilinguirian P, Olivera DE. De aguas y tierras: aportes para la reactivación de campos agrícolas arqueológicos en la puna argentina. *Rel Soc Argent Antropol.* 2000; 24:99–118.
30. Curti RN, Andrade AJ, Bramardi S, Velasquez B, Bertero HD. Ecogeographic structure of phenotypic diversity in cultivated populations of quinoa from Northwest Argentina. *Ann Appl Biol.* 2012; 160:114–25.
31. Lorandi AM. Las rebeliones indígenas. In: Tandeter E, editor. *Nueva historia argentina Tomo 2: La sociedad colonial.* Buenos Aires, Argentina: Editorial Sudamericana; 2000. p. 285–329.
32. Jellen EN, Kolano BA, Sederberg MC, Bonifacio A, Maughan PJ, Kole C. *Chenopodium*. In: Kole C, editor. *Wild crop relatives: genomic and breeding resources Legume crops and forages.* Berlin, Germany: Springer Verlag; 2011. p. 35–61.
33. Quesada MN, Lema C. Los potreros de Antofagasta: trabajo indígena y propiedad (finales del siglo XVIII y comienzos del XIX). *Andes.* 2011; 22:ISSN S1668-8090.
34. del Castillo C, Winkel T, Mahy G, Bizoux JP. Genetic structure of quinoa (*Chenopodium quinoa* Willd.) from the Bolivian altiplano as revealed by RAPD markers. *Genet Resour Crop Evol.* 2007; 54:897–905.
35. Bruno MC. A morphological approach to documenting the domestication of *Chenopodium* in the Andes In: Zeder MA, Emshwiller E, Smith BD, Bradley DG, editors. *Documenting domestication: new archaeological and genetic paradigms.* Berkeley, USA: University of California Press; 2006. p. 32–45.
36. Bruno MC, Whitehead WT. *Chenopodium* cultivation and formative period agriculture at Chiripa, Bolivia. *Lat Amer Antiq.* 2003 Sep; 14:339–55. WOS:000185725600006.
37. Lema VS. Boceto para un esquema: domesticación y agricultura temprana en el Noroeste argentino. *Rev Esp Antropol Amer.* 2014; 44:465–94.
38. Kistler L, Shapiro B. Ancient DNA confirms a local origin of domesticated chenopod in eastern North America. *J Archaeol Sci.* 2011 Dec; 38:3549–54. WOS:000297384300036.
39. Arkush E, Stanish C. Interpreting conflict in the ancient Andes—Implications for the archaeology of warfare. *Curr Anthropol.* 2005; 46:3–28.
40. Nielsen AE. Asentamientos, conflicto y cambio social en el altiplano de Lípez (Potosí). *Rev Esp Antropol Amer.* 2002; 32:179–205.
41. Martel AR, Aschero CA. Pastores en acción: Imposición iconográfica vs. autonomía temática. In: Nielsen A, Rivolta MC, Selded V, Vázquez MM, Mercolli PH, editors. *Producción y circulación prehispánicas de bienes en el sur andino.* Córdoba, Argentina: Editorial Brujas; 2007. p. 329–49.
42. Vinton SD, Perry L, Reinhard KJ, Santoro CM, Teixeira-Santos I. Impact of empire expansion on household diet: the Inka in Northern Chile's Atacama Desert. *PLoS ONE.* 2009; 4:e8069. <https://doi.org/10.1371/journal.pone.0008069> PMID: 19956668
43. Bar-Yosef O. Climatic Fluctuations and Early Farming in West and East Asia. *Curr Anthropol.* 2011; 52: S175–S93.
44. Zeder MA. The origins of agriculture in the Near East. *Curr Anthropol.* 2011; 52:S221–S35.
45. Korstanje MA, Cuenya P, Williams VI. Taming the control of chronology in ancient agricultural structures in the Calchaqui Valley, Argentina. *Non-traditional data sets. J Archaeol Sci.* 2010; 37:343–9.
46. Etter A, McAlpine C, Possingham HP. Historical patterns and drivers of landscape change in Colombia since 1500: A regionalized spatial approach. *Ann Assoc Am Geogr.* 2008; 98:2–23.
47. Morlon P, Martínez ER, Brougère AM. Comprender la agricultura campesina en los Andes Centrales: Perú-Bolivia. Lima, Peru: Centro de Estudios Regionales Andinos Bartolomé de las Casas; 1996.
48. Wachtel N. La vision des vaincus: la conquête espagnole dans le folklore indigène. *Annales.* 1967; 3:554–85.
49. Capparelli A, Lema V, Giovannetti M, Raffino R. The introduction of Old World crops (wheat, barley and peach) in Andean Argentina during the 16th century AD: archaeobotanical and ethnohistorical evidence. *Veg Hist Archaeobot.* 2005; 14:472–84.
50. Gade DW. Landscape, system, and identity in the post-conquest Andes. *Ann Assoc Am Geogr.* 1992; 82:460–77.
51. Jamieson RW, Sayre MB. Barley and identity in the Spanish colonial Audiencia of Quito: Archaeobotany of the 18th century San Blas neighborhood in Riobamba. *J Anthropol Archaeol.* 2010; 29:208–18.

52. Parcero-Oubiña C, Fábrega-Álvarez P, Salazar D, Troncoso A, Hayashida F, Pino M, et al. Ground to air and back again: Archaeological prospection to characterize prehispanic agricultural practices in the high-altitude Atacama (Chile). *Quatern Int*. 2016; 435:98–113.
53. Belotti López de Medina CR, López Geronazzo L, Otero C. At the feet of the fortress: analysis of Inka period (ca. AD 1430–1536) archaeofaunal assemblages from residential unit 1 (RU1), Pucara de Tilcara (Jujuy, Argentina). *PLoS ONE*. 2016; 11:e0163766. <https://doi.org/10.1371/journal.pone.0163766> PMID: 27732648
54. Gil Montero R, Villalba R, Luckman BH. Tree rings as a surrogate for economic stress: an example from the Puna of Jujuy, Argentina in the 19th century. *Dendrochronologia*. 2005; 22:141–7.
55. Pannell JR, Charlesworth B. Effects of metapopulation processes on measures of genetic diversity. *Phil Trans R Soc Lond B*. 2000; 355:1851.
56. Cramp LJE, Evershed RP, Lavento M, Halinen P, Mannerman K, Oinonen M, et al. Neolithic dairy farming at the extreme of agriculture in northern Europe. *Proc Roy Soc Lond B*. 2014; 281:e20140819.
57. Riehl S, Pustovoytov KE, Weippert H, Klett S, Hole F. Drought stress variability in ancient Near Eastern agricultural systems evidenced by delta C-13 in barley grain. *Proc Natl Acad Sci USA*. 2014; 111:12348–53. <https://doi.org/10.1073/pnas.1409516111> PMID: 25114225
58. Fraser EDG. Coping with food crises: Lessons from the American Dust Bowl on balancing local food, agro technology, social welfare, and government regulation agendas in food and farming systems. *Glob Environ Change-Human Policy Dimens*. 2013; 23:1662–72.
59. Stafford Smith DM, McKeon GM, Watson IW, Henry BK, Stone GS, Hall WB, et al. Learning from episodes of degradation and recovery in variable Australian rangelands. *Proc Natl Acad Sci USA*. 2007; 104:20690–5. <https://doi.org/10.1073/pnas.0704837104> PMID: 18093932
60. Pintar E. Continuidades e hiatos ocupacionales durante el holoceno medio en el borde oriental de la puna salada, Antofagasta de la Sierra, Argentina. *Chungara*. 2014; 46:51–71.
61. Rodríguez MF, Rugolo de Agrasar ZE, Aschero CA. El uso de las plantas en unidades domésticas del sitio arqueológico Punta de la Peña 4, puna meridional argentina. *Chungara*. 2006; 38:257–71.
62. Oliszewski N, Martínez JG, Caria MA. Ocupaciones prehispánicas de altura: el caso de Cueva de los Corrales 1 (El Infiernillo, Tafí del Valle, Tucumán). *Rel Soc Argent Antropol*. 2008; 33:209–21.
63. Goudet J. HIERFSTAT, a package for R to compute and test hierarchical F-statistics. *Mol Ecol Notes*. 2005; 5:184–6.
64. Jombart T. adegenet: a R package for the multivariate analysis of genetic markers. *Bioinformatics*. 2008; 24:1403–5. <https://doi.org/10.1093/bioinformatics/btn129> PMID: 18397895
65. Kamvar ZN, Brooks JC, Grunwald NJ. Novel R tools for analysis of genome-wide population genetic data with emphasis on clonality. *Front Genet*. 2015; 6:208. <https://doi.org/10.3389/fgene.2015.00208> PMID: 26113860
66. Szpiech ZA, Jakobsson M, Rosenberg NA. ADZE: a rarefaction approach for counting alleles private to combinations of populations. *Bioinformatics*. 2008; 24:2498–504. <https://doi.org/10.1093/bioinformatics/btn478> PMID: 18779233
67. Pritchard JK, Stephens M, Donnelly P. Inference of population structure using multilocus genotype data. *Genetics*. 2000; 155:945–59. PMID: 10835412
68. Pudlo P, Marin JM, Estoup A, Cornuet JM, Gautier M, Robert CP. Reliable ABC model choice via random forests. *Bioinformatics*. 2016; 32:859–66. <https://doi.org/10.1093/bioinformatics/btv684> PMID: 26589278
69. Raynal L, Marin JM, Pudlo P, Ribatet M, Robert CP, Estoup A. ABC random forests for Bayesian parameter inference: arXiv 1605.05537v4: a preprint reviewed and recommended by Peer Community in Evolutionary Biology. 2017.