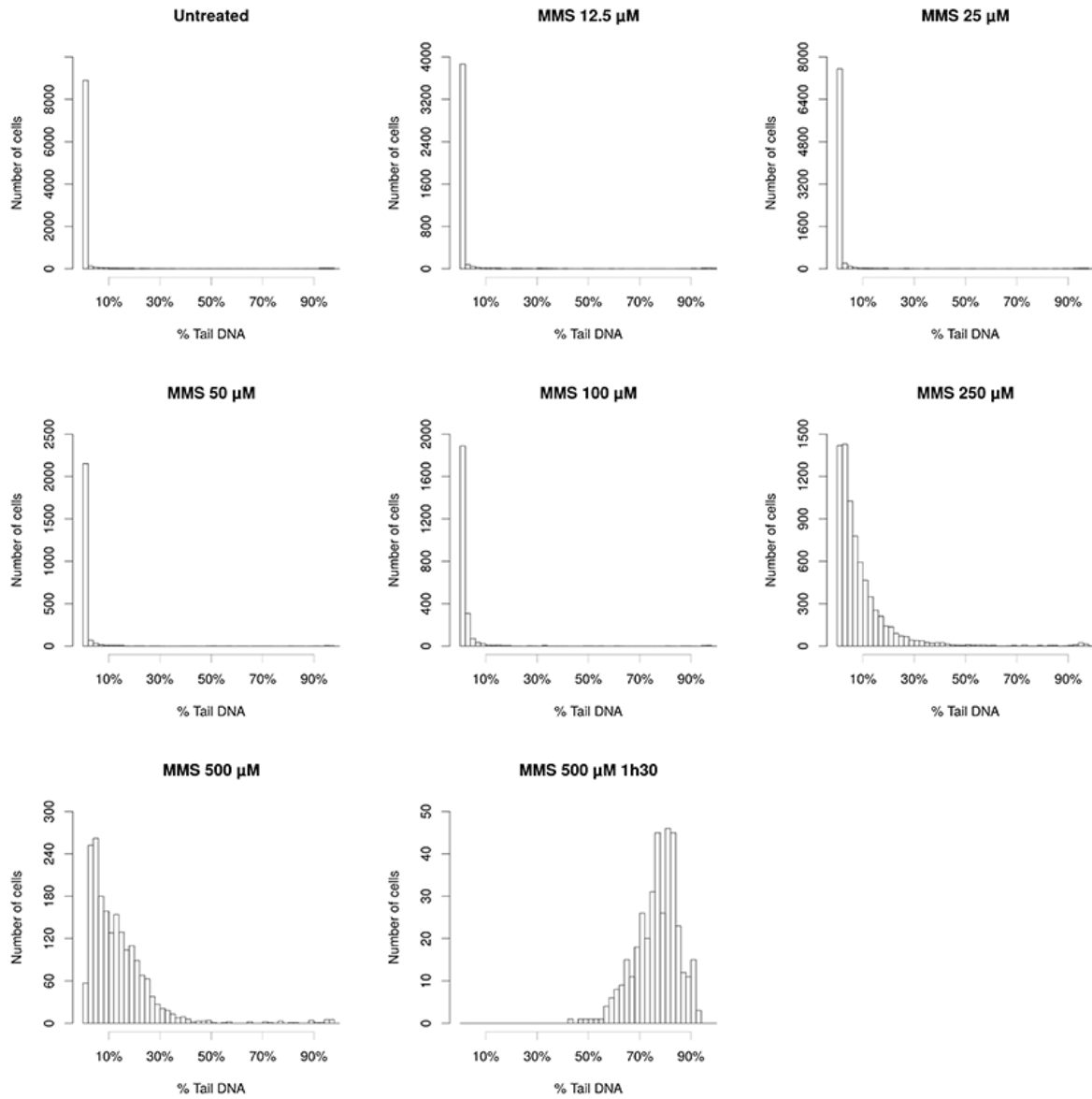


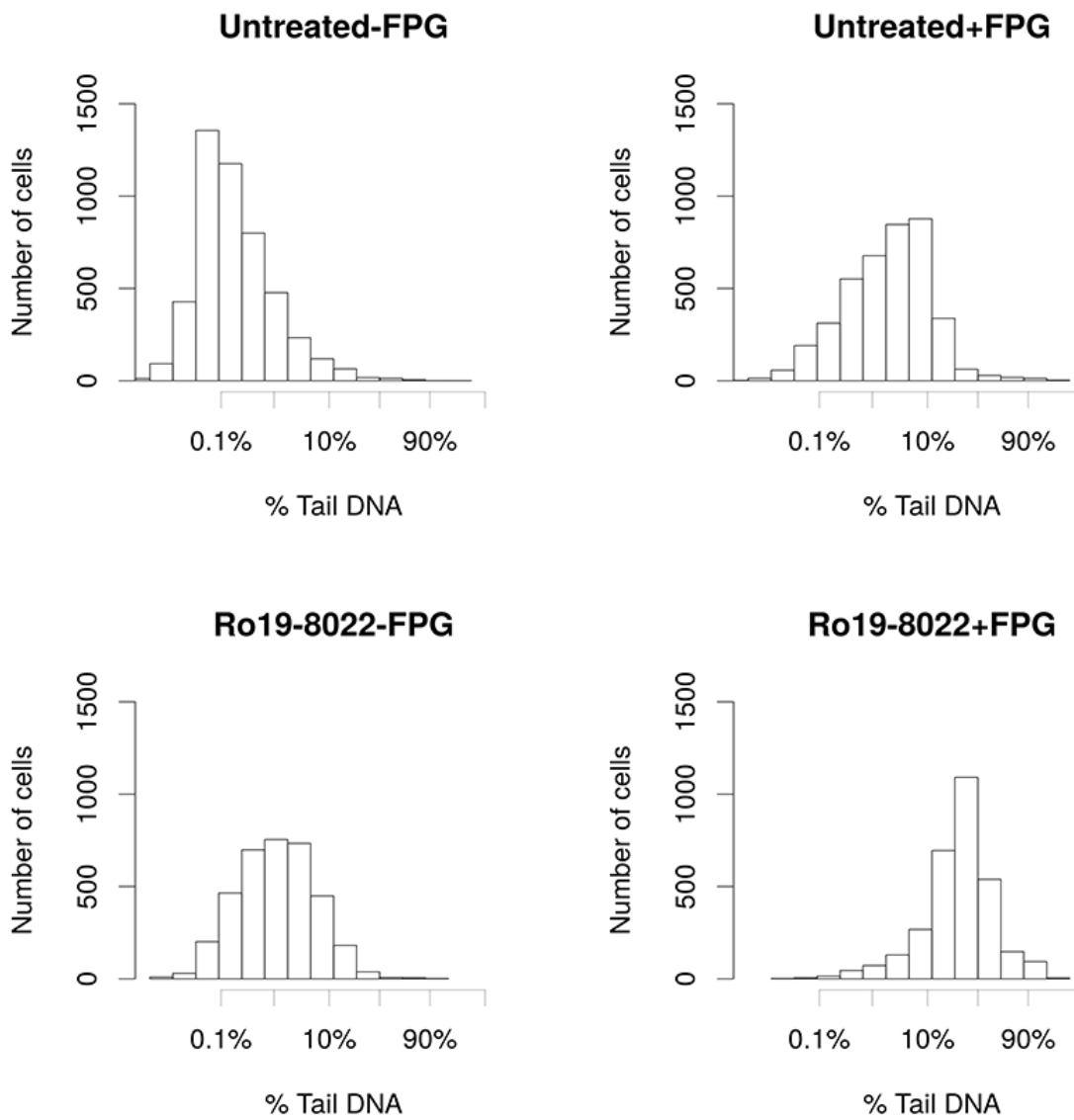
## Supplementary figures



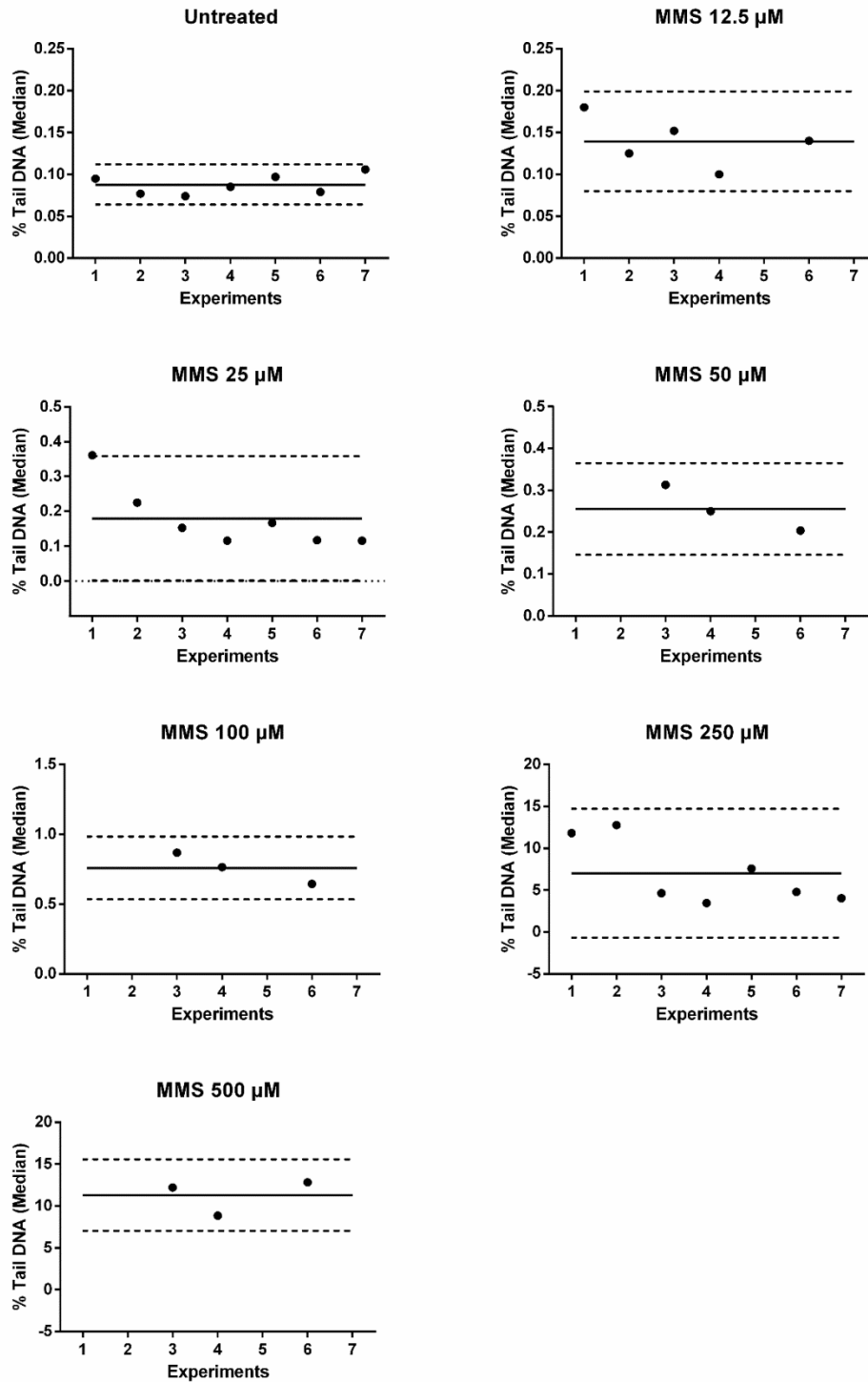
**Fig. S1.** Gelbond® film with 40 gels, attached to a plastic frame with metal hooks in each corner.



**Fig. S2.** Histogram of the distribution of the untransformed tail DNA (from 3-7 independent experiments).



**Fig.S3.** Histogram of the distribution of logit-transformed tail DNA (Data from 6 independent experiments).



**Fig. S4.** Variability of the experiment (% Tail DNA), data from 3 to 7 independent experiments. The two dotted horizontal lines represent the range of mean  $\pm$  2 SD, representing an acceptable variability for the comet assay, as previously described (De Boeck et al. 2000). The solid horizontal line in the middle of this range represents the mean of the data.