



**HAL**  
open science

## Large-Scale Automatic Feature Selection for Biomarker Discovery in High-Dimensional OMICs Data

Mickael Leclercq, Benjamin Vittrant, Marie-Laure Magniette, Marie Pier Scott Boyer, Olivier Perin, Alain Bergeron, Yves Fradet, Arnaud Droit

► **To cite this version:**

Mickael Leclercq, Benjamin Vittrant, Marie-Laure Magniette, Marie Pier Scott Boyer, Olivier Perin, et al.. Large-Scale Automatic Feature Selection for Biomarker Discovery in High-Dimensional OMICs Data. *Frontiers in Genetics*, 2019, 10, pp.452. 10.3389/fgene.2019.00452 . hal-02623625

**HAL Id: hal-02623625**

**<https://hal.inrae.fr/hal-02623625>**

Submitted on 26 May 2020

**HAL** is a multi-disciplinary open access archive for the deposit and dissemination of scientific research documents, whether they are published or not. The documents may come from teaching and research institutions in France or abroad, or from public or private research centers.

L'archive ouverte pluridisciplinaire **HAL**, est destinée au dépôt et à la diffusion de documents scientifiques de niveau recherche, publiés ou non, émanant des établissements d'enseignement et de recherche français ou étrangers, des laboratoires publics ou privés.



Distributed under a Creative Commons Attribution 4.0 International License



# Large-Scale Automatic Feature Selection for Biomarker Discovery in High-Dimensional OMICs Data

Mickael Leclercq<sup>1,2\*</sup>, Benjamin Vittrant<sup>1,2</sup>, Marie Laure Martin-Magniette<sup>3,4</sup>, Marie Pier Scott Boyer<sup>1,2</sup>, Olivier Perin<sup>5</sup>, Alain Bergeron<sup>1,6</sup>, Yves Fradet<sup>1,6</sup> and Arnaud Droit<sup>1,2\*†</sup>

<sup>1</sup> Centre de Recherche du CHU de Québec–Université Laval, Québec City, QC, Canada, <sup>2</sup> Département de Médecine Moléculaire, Université Laval, Québec City, QC, Canada, <sup>3</sup> Institute of Plant Sciences Paris Saclay IPS2, CNRS, INRA, Université Paris-Sud, Université Evry, Université Paris-Saclay, Paris Diderot, Sorbonne Paris-Cité, Orsay, France, <sup>4</sup> UMR MIA-Paris, AgroParisTech, INRA, Université Paris-Saclay, Paris, France, <sup>5</sup> Digital Sciences Department, L'Oréal Advanced Research, Aulnay-sous-bois, France, <sup>6</sup> Département de Chirurgie, Oncology Axis, Université Laval, Québec City, QC, Canada

## OPEN ACCESS

### Edited by:

Angelo Facchiano,  
Italian National Research Council  
(CNR), Italy

### Reviewed by:

Zhi-Ping Liu,  
Shandong University, China  
Barbara Di Camillo,  
University of Padova, Italy

### \*Correspondence:

Mickael Leclercq  
mickael.leclercq@gmail.com  
Arnaud Droit  
arnaud.droit@crchudequebec.ulaval.ca

### † Present Address:

Arnaud Droit,  
Computational Biology Laboratory,  
Centre de Recherche du CHU de  
Québec – Université Laval,  
Québec City, QC, Canada

### Specialty section:

This article was submitted to  
Bioinformatics and Computational  
Biology,  
a section of the journal  
Frontiers in Genetics

**Received:** 23 January 2019

**Accepted:** 30 April 2019

**Published:** 16 May 2019

### Citation:

Leclercq M, Vittrant B,  
Martin-Magniette ML, Scott Boyer MP,  
Perin O, Bergeron A, Fradet Y and  
Droit A (2019) Large-Scale Automatic  
Feature Selection for Biomarker  
Discovery in High-Dimensional OMICs  
Data. *Front. Genet.* 10:452.  
doi: 10.3389/fgene.2019.00452

The identification of biomarker signatures in omics molecular profiling is usually performed to predict outcomes in a precision medicine context, such as patient disease susceptibility, diagnosis, prognosis, and treatment response. To identify these signatures, we have developed a biomarker discovery tool, called BioDiscML. From a collection of samples and their associated characteristics, i.e., the biomarkers (e.g., gene expression, protein levels, clinico-pathological data), BioDiscML exploits various feature selection procedures to produce signatures associated to machine learning models that will predict efficiently a specified outcome. To this purpose, BioDiscML uses a large variety of machine learning algorithms to select the best combination of biomarkers for predicting categorical or continuous outcomes from highly unbalanced datasets. The software has been implemented to automate all machine learning steps, including data pre-processing, feature selection, model selection, and performance evaluation. BioDiscML is delivered as a stand-alone program and is available for download at <https://github.com/mickaelleclercq/BioDiscML>.

**Keywords:** machine learning, omics, biomarkers signature, feature selection, precision medicine

## INTRODUCTION

The identification of biomarkers that are indicative of a specific biological state is a major research topic in biomedical applications of computational biology (Liu et al., 2014; Beerenwinkel et al., 2016; Zhang et al., 2017). With the emergence of high-throughput molecular profiling technologies and their decreasing costs, traditional medicine is moving to precision medicine to improve disease diagnosis, and to propose tailored interventions to individuals. Research studies involving cohorts of patients aim to discover patterns that establish risk stratification and discriminate patient states, such as diseased vs. controls, disease type, etc. These last years, clinical and biology research turned toward extensive usage of OMICs (i.e., proteomics, transcriptomics, metabolomics, genomics, etc.) technologies, which include microarrays, mass spectrometry, and whole exome/genome and RNA sequencing. Specific patterns associated with a clinical outcome of interest (e.g., disease diagnostic, prognostic), called biomarker signatures, can be derived from these high-dimensional technologies outputs (e.g., gene expression, polymorphisms) (Lin et al., 2017).

These signatures, which are measurable indicators for predicting a biological phenomenon, are usually identified using machine learning (Pasolli et al., 2016) or statistical multivariate analysis approaches (Rohart et al., 2017c).

Biomarker signature identification from disease-derived omics datasets is a challenging task involving many pitfalls. First, the datasets are generally highly unbalanced, where the features (e.g., genes, peptides, metabolites...), also called attributes or variables, largely outnumber the samples. In addition, patients are unequally distributed among measured outcomes. Second, the molecular profiles are often heterogeneous (e.g., sub-phenotypes in cancer data), of diverse types (e.g., categorical, continuous), and scattered over multiple inputs (Libbrecht and Noble, 2015). To identify sets of predictive biomarker signatures from omics data, a few non-commercial methods have been implemented in R packages (Lê Cao et al., 2009; Tavernier et al., 2012; Cun and Fröhlich, 2014; Rohart et al., 2017b). These toolkits have adopted diverse multivariate projection-based methods including principal component analysis (Wold, 1975), independent component analysis (Yao et al., 2012), multi-group partial least squares regression (Eslami et al., 2013), canonical correlation analysis (Hotelling, 1936), K-means clustering (Hartigan and Wong, 1979), and associated visualizations. Recently, other research teams have proposed approaches in machine learning (ML) (Janevski et al., 2009; Cun and Fröhlich, 2013; Lagani et al., 2013; Swan et al., 2013, 2015; Butti et al., 2014; Kong et al., 2014; Kourou et al., 2015), a branch of artificial intelligence that holds a great potential for pattern recognition in complex diseases datasets. ML has already shown its ability to identify key features (markers) and modeling predictive biomarker signature in a variety of fields, including cancer research (Matsumura et al., 2010; Cima et al., 2011; Cui et al., 2011; Roth et al., 2011; Fröhlich and Cun, 2012; Kourou et al., 2015), neurology (Daoqiang and Dinggang, 2012; Deshpande et al., 2013; Fekete et al., 2013), immunology (Sutherland et al., 2011), skin diseases (Johansson et al., 2011), etc. However, all these techniques are complex to use and are out-of-reach for non-programmers and non-ML experts. Furthermore, the software implemented specifically for omics data are still rare and are strictly limited to specific ML algorithms for feature selection (also called “attribute selection”) or classification (Butti et al., 2014). Hence, there is an unmet need to develop user-friendly computational approaches for using machine learning in a biomedical context that are dedicated to biologists and clinical researchers. These approaches must be able to identify complex patterns and predict outcomes in various biological or clinical fields (e.g., disease diagnosis, prognosis, therapeutics), thus helping to understand the biology behind a measured outcome.

Considering the complexity of the ML approach, we present in this paper a software called BioDiscML (*Biomarker Discovery by Machine Learning*), which aims to greatly facilitate the work required for biomarker signature identification from high-dimensional data, such as gene expression, by automating the ML approach. Some non-commercial automatic software already exists to facilitate the choice of learning algorithms and perform hyper-parameter optimization, such as Auto-weka (Thornton

et al., 2013), auto-Sklearn (Feurer et al., 2015), autoML (Feurer et al., 2015), and preconfigured pipelines in Orange canvas (Demšar et al., 2013). But they are not explicitly designed to answer biological problems, lack of user-friendly experience for non-ML experts, some focusing only on hyperparameter optimization, and may be complex to parallelize to decrease calculation time. We aim here to fill the gap, providing BioDiscML the capacity to test large number of feature subsets and models in order to obtain the most performant signature to predict a measured outcome. BioDiscML uses an exhaustive search approach, which systematically enumerates a pre-defined set of possible candidates for a solution and test whether each candidate satisfies the problem statement. BioDiscML can also merge files from different sources, search for the most predictive combination of feature subsets and machine learning classifiers, train a model, evaluate predictive performances, parallelize the computation, and search for correlated features.

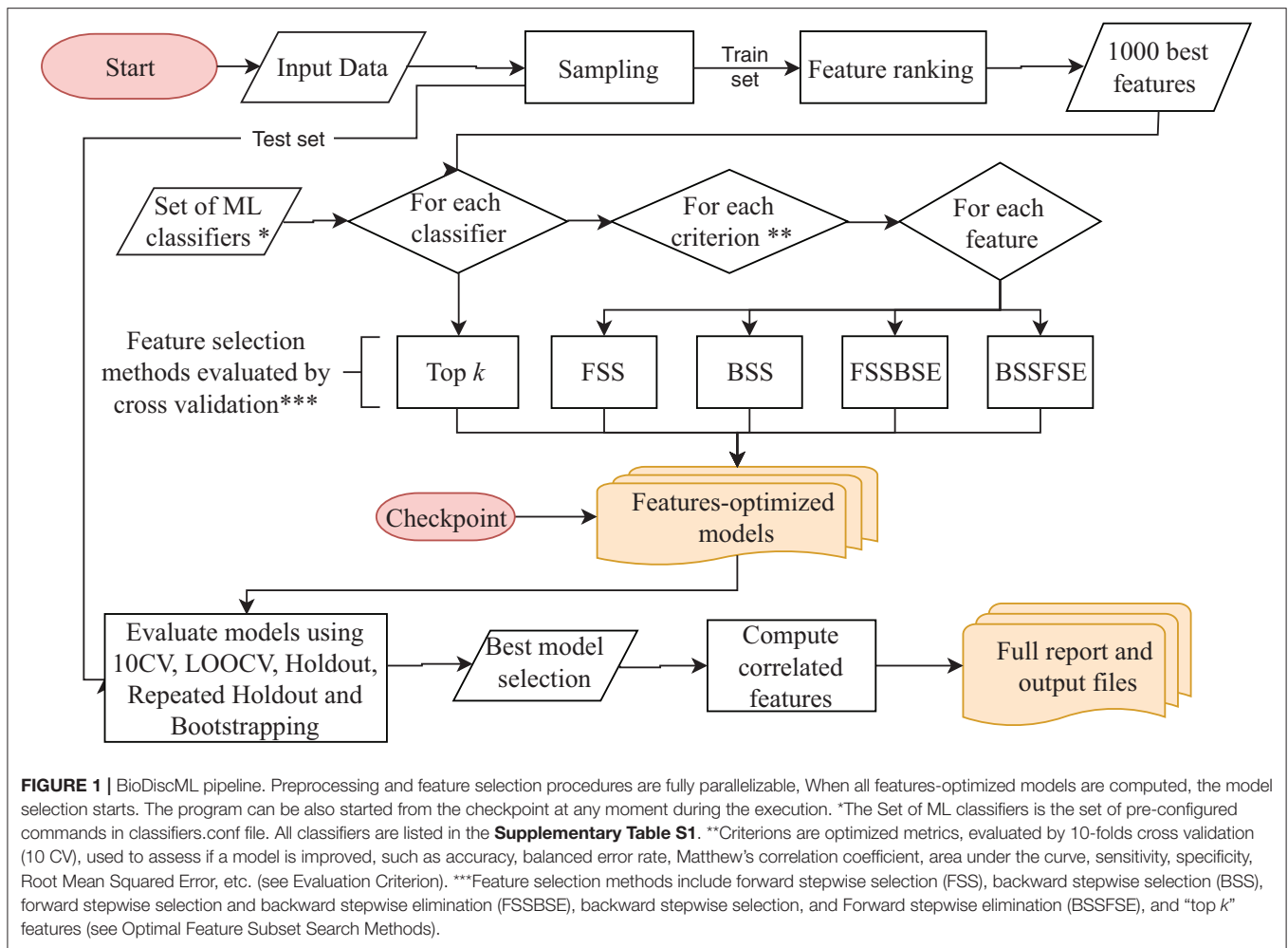
## MATERIALS AND METHODS

BioDiscML is a tool that automates main ML steps by implementing methods for feature and model selection. In this section, we describe the program procedures separated in three main components: preprocessing, feature selection and model selection. We also present all supported models (see **Supplementary Materials**), evaluation metrics, feature search methods, best model selection and correlated features search approaches. Finally, we have summarized the real-life datasets we used to compare BioDiscML against various existing tools.

### BioDiscML Software

BioDiscML is a biomarker discovery software that supports classification (categorical class) and regression (numerical class) problems. It is written in JAVA 8 language (Fischer, 2015) and use Weka 3.8 machine learning library (Holmes et al., 1994; Hall et al., 2009; Witten et al., 2016). It automates several machine learning steps aiming to identify predictive models. To this purpose, BioDiscML can routinely perform data preprocessing, features dimension reduction, a combined feature and model selection strategy, identify best models, and search correlated features. All machine learning generated models are evaluated by various cross validation procedures. All steps are configured with editable default parameters. Advanced parameters can also be modified by the user. Some basic information is needed to start the program such as: input dataset(s), class label name, problem type (regression or classification).

BioDiscML pipeline presented in **Figure 1** works as follows: It starts with the preprocessing section. After merging the input datasets when many are submitted, a first sampling step separates the data in a train and a test set (2/3 and 1/3, respectively, by default), this latter will be used after model creation to assess non-overfitting. Then, a feature ranking algorithm sorts the features based on their predictive power with respect to the class. Only the first best 1,000 s features are kept by default. Then, in the feature selection section, for each machine learning algorithm defined in BioDiscML (i.e., the classifiers), and for each optimization evaluation criterion (i.e., a chosen evaluation metric), two types

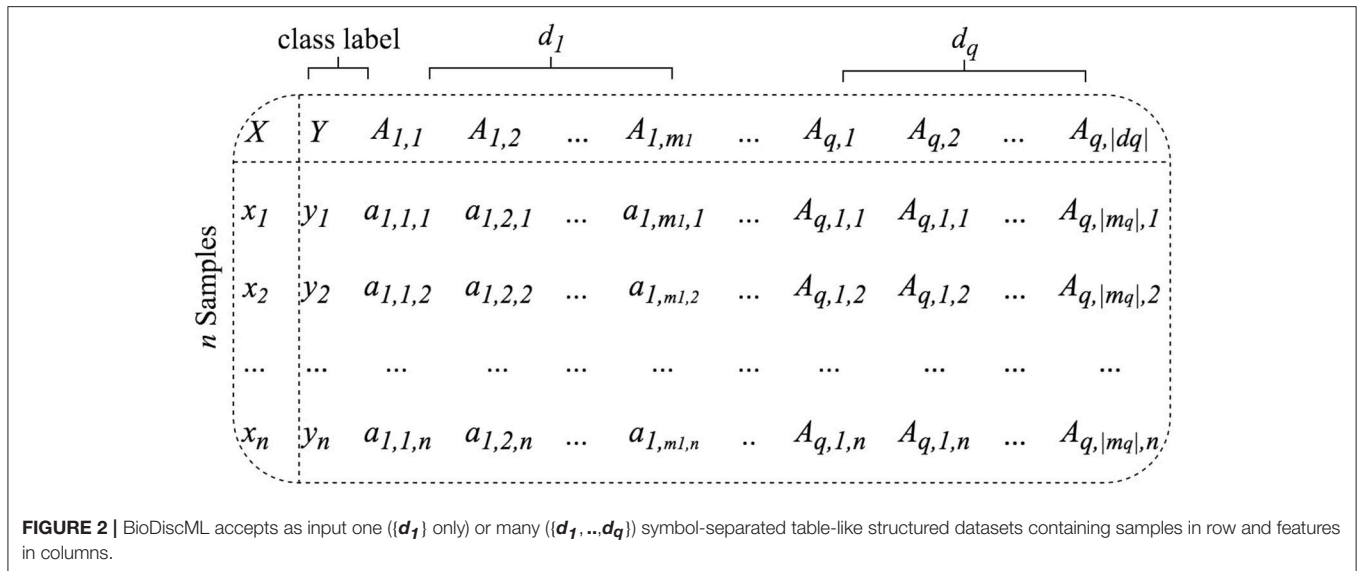


of feature search selection are performed: top  $k$  features and stepwise (see Optimal Feature Subset Search Methods). Top  $k$  simply select the best  $k$  elements from the ordered feature set to create a model. In the stepwise approaches, for each element in the ordered set, features are added and/or removed one by one depending on the feature search method. At each iteration, the created model is evaluated by 10-fold cross validation (10 CV) and the combination of selected features is retained if the predictive performance is improved. When all features are tested and the signature is identified, the model is evaluated on other cross-validation/sampling procedures (see Model Evaluation). Once all classifiers are tested, we end with a set of feature-optimized models with their associated performances metrics (see Model Evaluation) and associated features, for each model. In total, about 8,500 models for classification and about 1,800 for regression are tested, but a large part will not be computed because of non-supported data (see **Supplementary Table S1**). Once all models are generated, the program executes the best model(s) selection section. The average performance among some computed metrics (see Model Evaluation) are used to estimate the most efficient model (see Best Model Selection), and correlated features are retrieved from the original dataset (see

Correlated Features Search) and compiled in a tabular-separated text file report. Depending computing performances and dataset size, a few hours may be needed for BioDiscML pipeline to finish. Before the end of BioDiscML execution, a user can execute at any time BioDiscML from the checkpoint in parallel to perform the best model selection process, which will retrieve models from the feature-optimized model list generated and updated in real-time.

### Data Preprocessing

BioDiscML supports multiple input files (e.g., clinico-pathological information with omics data), as the condition that sample identifiers exist in all files to perform joining. The input datasets are assumed to be clean and consistent, in a flat file format, table-like structure with samples in rows and features in columns (**Figure 2**). Field separator symbols (e.g., tabulation, comma, semicolon) are automatically detected based on the first lines of the file. Feature and instance duplicate names are not allowed. Where multiple datasets are submitted, only one must contain the class label. File contents are composed of instance identifiers (e.g., samples, patients) associated to numerical and/or nominal features (e.g., high/medium/low, effect\_A/effect\_B, Drug\_1/Drug\_2). Let be a set of  $q$  datasets



$\{d_1, d_2, \dots, d_q\}$  with  $q \geq 1$  containing  $m_q$  features. In each dataset the first column is used to create the joining of all datasets and consists of instances unique identifiers. If an identifier does not exist in all datasets, it will be ignored. The class label column  $Y$  is required and must be specified by the user. In addition to the class label, the dataset  $d_1$  contains a set of  $m_1$  features noted  $A_1 = \{A_{1,1}, A_{1,2}, \dots, A_{1,m_1}\}$  where  $A_{1,m_1}$ , the  $m_1$ -th feature of  $d_1$ , is a vector denoted  $\{a_{1,m_1,1}, a_{1,m_1,2}, \dots, a_{1,m_1,n}\}$ . Hence the feature vector of the  $n$ -th instance of the dataset  $d_1$  is noted  $x_{1,n} = \{y_n, a_{1,1,n}, a_{1,2,n}, \dots, a_{1,m_1,n}\}$ . In case of multiple datasets ( $q \geq 2$ ), the feature vector of the  $n$ -th instance of the dataset  $d_r$  is noted then  $x_{r,n} = \{a_{r,1,n}, a_{r,2,n}, \dots, a_{r,m_r,n}\}$ , where  $m_r$  is its number of features. The resulting set of merged datasets is called  $D$ .

Due to experimental errors or partially answered forms by patients, missing data may be present in the dataset. If one wants to conserve the features with missing data, the ML library used by BioDiscML will replace all missing values for nominal and numeric features with the modes (i.e., value that occurs most often) and means from the training data, respectively.

Also, manipulating large files is painful and one would exclude specific features without editing the input files. Thus, we implemented in BioDiscML features exclusion capabilities, where it simply ignores columns entered by the user.

Finally, a stratified sampling, which preserve the initial classes balancing, is applied to generate a test set for further evaluation to assess non-overfitting. It is set by default to create a train set of 2/3 of the input data, from which models will be computed, and 1/3 as a test set. These proportions can be modified by the user, and in case of very low number of instances, sampling can be disabled. A separate test set of the same structure than the train set can also be provided to BioDiscML.

### Feature Ranking and Dimension Reduction

Feature ranking (as for feature selection) is essential to identify irrelevant or redundant features, which, once discarded, help to reduce computation time, improve prediction performance, and extract the most informative features (Sasikala et al.,

2016). BioDiscML uses Information Gain (Krishnaiah and Kanal, 1982), which evaluates the worth of a feature by measuring the information gain with respect to a class. However, Information Gain is not compatible for regression problems using continuous class. In this case, BioDiscML instead uses ReliefF (Robnik-Sikonja and Kononenko, 1997), an adaptation to the original Relief algorithm (Kira and Rendell, 1992), which is as fast as Information Gain computation. ReliefF evaluates the worth of a feature by repeatedly sampling an instance and considering the value of the given feature for the nearest instance of the same and different class. Both Information Gain and ReliefF are used in conjunction with a ranker search algorithm, which ranks features by their individual evaluations. By default, and to reduce the dimension of the dataset, BioDiscML will only keep informative features (Information Gain  $> 0.01$  or  $|\text{ReliefF}| > 0.01$ ) or the first 1,000 best features, ordered by their absolute value of their score (ReliefF provides positive and negative correlation scoring with continuous class) (see Algorithm 1).

### Feature Subset Selection and Model Search

Selecting a subset of features from a large number of potential variables is a common problem in pattern classification. Some feature subset selection methods involve a criterion to evaluate the capacity of feature subsets to distinguish one class from another, and a search algorithm to explore the potential solution space. At the end of the process, the feature subset generally contains the most important and non-redundant variables. In this context, BioDiscML automates an exhaustive procedure that generates thousands of combinations of ML algorithms and feature subsets defined by various search methods. This technique, which mixes both feature and model search, produces thousands of models associated to an optimal subset of non-redundant features. Many evaluation procedures (e.g., cross validations, resampling, bootstrapping) using train and test sets assess if models do not overfit the train set. All steps are described in Algorithm 2.



**Algorithm 1:** Dimension reduction by Information Gain and ReliefF**Input:** train instances of  $D$  (merged datasets),  $classifierType$  (classification or regression)**Output:** Dataset with ranked best features  $S$ 

```

for each feature array  $A$  do
  if  $classifierType = \text{classification}$ 
    then  $meritScore_a = \text{Compute information gain value of } A \text{ with respect to classes } Y$ 
    else  $meritScore_a = \text{Compute ReliefF value of } a \text{ with respect to classes } Y$ 
  end if
  if  $meritScore_a \neq 0$ 
    then add  $|meritScore_a|$  to  $meritScores$ 
  end if
end for
 $SortedFeatures = \text{Sort } meritScores \text{ from largest to smallest values}$ 
if  $|SortedFeatures| \leq 1000$ 
  then  $S = SortedFeatures$ 
  else  $S = SortedFeatures\{A_1, A_2, \dots, A_{1000}\}$ 
end if
return  $S$ 

```

**Available machine learning algorithms**

ML classifier algorithms and their hyperparameters (i.e., the options of the learning algorithm) are predefined in BioDiscML with random sets of options, including those provided by default in Weka library. In the current version, about 80 classifiers are available in BioDiscML (**Supplementary Table S1**). Some classifiers exist in various adaptations to support more features or class types. Depending available computing resources, the list of classifiers and hyperparameters can be modified by the user, as well as the spectrum of tested algorithms. In case of non-compatibility between a classifier and the input data or erroneous options, the classifier will be ignored by BioDiscML.

**Evaluation criterion**

For each classifier, several feature search methods are conducted. Each search method iterates over the features (except “top  $k$ ” features approach) and trains a model at each iteration. To evaluate if a model is improved by adding or removing a feature, an evaluation criterion is measured by 10-fold cross-validation to assess if the prediction performance increases. All metrics are averaged over the folds and by class size, since a classifier usually performs differently over each class. This optimization procedure performed on feature selection either maximize or minimize the criterion, depending if it measures a performance or an error, respectively. Criteria supported by BioDiscML includes accuracy (ACC), balanced error rate (BER), Matthew’s correlation coefficient (MCC), area under the curve (AUC), sensitivity, specificity, Root Mean Squared Error (RMSE), Correlation Coefficient (CC), etc. The full criteria list, including their equations, is provided in **Supplementary Table S2**.

**Optimal feature subset search methods**

For each ML algorithm listed in **Supplementary Table S1**, and for each selected criteria selected in **Supplementary Table S2**, from the ranked features  $S$  obtained in Algorithm 1, models are trained using several feature search approaches, including: Forward stepwise selection (FSS), Backward stepwise selection (BSS), Forward stepwise selection and Backward stepwise elimination (FSSBSE), Backward stepwise selection and Forward stepwise elimination (BSSBSE), and “top  $k$ ” features. In the stepwise procedures, features having an equal predictive power to the outcome (i.e., distributions similar among classes) and retained in the model may be selected randomly or by order of appearance in the dataset.

**Forward stepwise selection (FSS).** Also called sequential forward selection (Reunanen, 2003), where features are added one by one to the model. At each added feature, the model is evaluated by 10 CV. If the model is improved, based on a given evaluation criterion, the feature is definitely kept in the model, otherwise it is rejected (Maugis et al., 2011).

**Backward stepwise selection (BSS).** This approach is similar to the FSS, but instead of starting from the best feature, this algorithm starts the selection from the worst feature. Features are added one by one, if the model is improved (evaluated by 10 CV) the feature is definitely kept in the model, else, it is rejected.

**Forward stepwise selection and backward stepwise elimination (FSSBSE).** The drawback of FSS and BSS is that once a feature is selected, it cannot be deleted at a later stage. Consequently, redundant features might be selected. To alleviate this problem, we have implemented a FFSBSE algorithm, inspired by previous work (Caruana and Freitag, 1994; Mao, 2004; Zhang, 2011). After each addition of an increasing criterion score feature using FSS, a BSE step removes all previously selected features one by one in reverse order with replacement and test the performance by 10 CV every time. If removing a feature improves the model (evaluated by 10 CV), then the feature is discarded, otherwise it is kept.

**Backward stepwise selection and forward stepwise elimination (BSSBSE).** Similar to FSSBSE, but instead the algorithm starts from the selection of the worst feature.

**“Top  $k$ ” features** This fast method simply trains a model with a subset of  $k$  best features, with  $k = \{1, 5, 10, 15, 20, 25, 30, 40, 50, 75, 100\}$ .

**Model evaluation**

Prediction performance of a model is measured using various evaluation procedures including 10 CV, leave-one-out cross validation (LOOCV), holdout, repeated Holdout, bootstrapping, and 0.632+ bootstrap estimator. For each generated model described in previous sections, and for each evaluation procedure, the following metrics are measured (see **Supplementary Table S2**): ACC, AUC, AUPRC, Sensitivity, Specificity, MCC, BER. In *10 CV evaluation*, the original training set is randomly partitioned into 10 equal sized subsamples. The

model is trained on nine subsamples and tested on the remaining one. The CV is repeated 10 times, where each subsample is used exactly once for evaluation. The reported metric scores are their average over all folds. In *LOOCV* each model is trained on all the data except for one instance and a prediction is made for that instance. Average of metric scores are computed over all tested instances. The *holdout* method is the simplest kind of cross validation where the dataset is randomly separated into two sets generated at sampling procedure (see **Figure 1**), called the training set and the testing set. The model is trained using the training set only, then is used to predict the class for the data in the testing set as evaluation. However, this type of evaluation can have a high variance since it depends heavily on which instances end up in the training and test sets. Thus, a *repeated holdout* is also performed 100 times (by default) with random sampling without replacement. *Repeated Holdout* consists of randomly select and hold out a 1/3 of the training sample for testing, build model with only the remaining samples, retrieve its performances, and repeat the process many times. At the end, we report the average all performance metrics. The *bootstrapping* is equivalent, except the random sampling is performed with replacement. Finally, we also provide a 0.632+ bootstrap estimator (Efron, 1983), representing an estimation of the bias of the predictive model, which should tend to 0, hence assessing that the model does not overfit.

In addition to all these metrics, for each feature-optimized generated models, we calculate the average MCC and BER with their associated standard deviation across all evaluations (10 CV, *LOOCV*, *Repeated Holdout*, *Bootstrap*, *holdout*). For regression, we calculate the average and standard deviation of CC and RMSE.

## Best Model Selection

Selecting the best model is not trivial since several good solutions are produced. Moreover, the definition of a “good” model also depends of user needs; for example, one would favor a model with a very low number of features over a model having dozens of feature, even if the latter provides a better overall performance. While BioDiscML proposes an automatic selection of the best model, a manual approach would be appropriate at that step. For this reason, all models are stored in real time in a Microsoft Excel-compatible Comma Separated Value (CSV) file and can be easily ordered by a criterion metric according to the user needs. Identifiers of user-selected models can be then submitted to BioDiscML to generate data files for easy re-use in other programs and full reports (containing the biomarker signature, the model and its hyperparameters, overall performances, and correlated features). Otherwise, by default, BioDiscML best model selection procedure aims to identify the model having a high agreement between the various evaluation methods, hence assessing stability and low overfitting of the model. To this purpose, select the model having the best average MCC with a standard deviation lower than 0.1 (or another adjusted threshold set by the user). The user can change the best model selection strategy at ease in the program configuration file. For example, one would select a trained model on train set having the best

**Algorithm 2:** Identification of features subsets and feature-optimized models

**Input:** Dataset with ranked best features  $S$ , set of ML *classifiers* with various hyperparameters, set of *criteria*, datasets  $D$

**Output:** Feature-optimized models list  $L$  with their identified features subset

**function** EVALUATE(*model*, *selectedFeatures*, dataset  $D$ , list of models  $L$ )

*trainSetEvaluation* = Evaluate *model* using 10CV, *LOOCV*, *Bootstrap*, *Repeated Holdout*, 0.632+ estimator on train set  
*testSetEvaluation* = Extract *selectedFeatures* from test instances of dataset  $D$  and perform holdout evaluation with *model*

*performances* = *trainSetEvaluation*, *testSetEvaluation*  
 add *model* with *performances* and *selectedFeatures* to  $L$   
**return**  $L$

**end function**

**for each** *classifier* in *classifiers* **do**

**for each** *criterion* in *criteria* **do**

**for each** *featureSearchMethod* in *featureSearchMethods*{*FSS*, *BSS*, *FSSBSE*, *BSSFSE*}

**do**

**if** *criterion* must be maximized

(see **Supplementary Table S2**) **then**

*criterionScore* = 0

*rule* = “lesser than”

**else**

*criterionScore* = 1000

*rule* = “greater than”

**end if**

**if** *featureSearchMethod* = *FSS* or *BSS* **then**

**if** *featureSearchMethod* = *BSS* **then**

$S$  = invert feature rank order of  $S$

**end if**

**for each** feature  $A$  in  $S$  **do**

Add  $A$  to *selectedFeatures*

*model* = Train using *classifier* with *selectedFeatures*

*newCriterionScore* = perform 10CV evaluation

**if** *newCriterionScore* *rule* *CriterionScore*

**then** discard  $a$  from *selectedFeatures*

**else** keep  $a$  in *selectedFeatures*

*criterionScore* = *newCriterionScore*

**end if**

**end for**

**else**

**if** *featureSearchMethod* = *BSSFSE*

**then**  $S$  = invert feature rank order of  $S$

**end if**

**for each** feature  $A$  in  $S$  **do**

Add  $A$  to *selectedFeatures*

*model* = Train using *classifier* with *selectedFeatures*

*newCriterionScore* = perform 10CV evaluation

---

```

if newCriterionScore rule CriterionScore
then discard A from selectedFeatures
else
  keep A in selectedFeatures
  criterionScore = newCriterionScore
  for each selectedFeature from before last kept
  feature to the first selected feature in
  selectedFeatures do
    remove selectedFeature from selectedFeatures
    subModel = Train using classifier with
    selectedFeatures
    subNewCriterionScore = perform 10CV
    evaluation
    if subNewCriterionScore rule
    NewCriterionScore then
      discard selectedFeature from selectedFeatures
      NewCriterionScore = subNewCriterionScore
    else
      keep selectedFeature in selectedFeatures
    end if
  end for
end if
end for
end if
  L = EVALUATE(model, selectedFeatures, A, L)
end for
end for
# create models without stepwise feature subset selection
approaches
selectedFeatures = k first features
model = Train using classifier with selectedFeatures
from dataset S
L = EVALUATE(model, selectedFeatures, A, L)
end for
return L

```

---

MCC on the test set (TEST\_MCC, see readme program file), or on the best bootstrapping using merged training and testing sets (TRAIN\_TEST\_BS\_MCC). Since all generated models have a unique identifier, one would use these identifiers to select the best model based its own criteria.

### Ensemble Learning

Since several good models with different features can exist in the results generated by BioDiscML, we also propose a vote classifier able to combine many models together. Different combinations of probability estimates for classification are available, including Average of probabilities, Product of probabilities, Majority voting and Median. As for best model selection, many metrics and correlated features are provided for this ensemble model. We also count the number of occurrences of each features in the combined models. The models to add in the ensemble classifier are dependent of the user choice. They can be selected manually using their unique identifiers, or by setting a metric dependent

rule (by default average MCC lower than 0.6) and a maximum number of models to include.

### Correlated Features Search

The identified signatures by stepwise search methods will tend to ignore all redundant/correlated features. To use the models as “black box” for pure prediction, this may be optimal, but not for biological interpretation because one would understand why the selected features have a link with the predicted class. To this purpose, from the features in the signature, BioDiscML retrieves all other correlated features from the original dataset using Pearson and Spearman correlations. BioDiscML also identifies all neighbor features discovered during feature ranking procedure by Information Gain and ReliefF methods. Both provide feature ranking scores that are used to detect the features having the same predictive power, i.e., similar behavior among instances. With these techniques, redundant information lost during the feature selection process are recovered, hence helping for further interpretation of the signature.

### Gene Set Enrichment Analysis

We performed several Gene Set Enrichment Analysis (GSEA) to characterize the signatures identified by BioDiscML on the test datasets. To this purpose, we used ToppFun tool, from ToppGene suite (Chen et al., 2009), with Bonferroni correction at 0.05 to the probability density function ( $p$ -value Method).

### Datasets for Benchmarking

Datasets described in **Table 1** have been evaluated to compare the performance of BioDiscML and recent tools. All models and signature information for all tested datasets are presented in **Supplementary Datasets\_results.xlsx**.

## RESULTS

We compared BioDiscML to various recent approaches dedicated to biomarker discovery and modeling, including MINT (Rohart et al., 2017a), AucPR (Yu and Park, 2014), and RGIFE (Swan et al., 2015) to demonstrate the better predictive performances that BioDiscML offers on various omics datasets. In all cases, BioDiscML outperform these state-of-the-art tools.

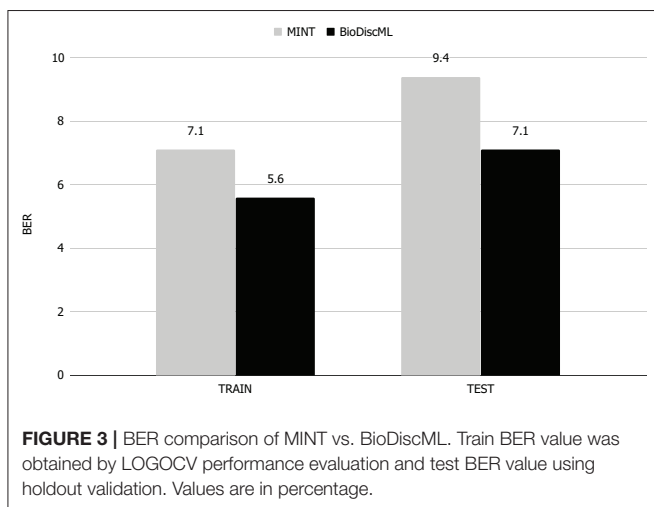
### BioDiscML vs. Mint

MINT implements a multivariate integrative method able to integrate independent datasets, reduce batch effect, classify instances and identify key discriminant variables. In their study, they performed a feature selection and classification evaluation of a stem cell dataset. According to their published results, they identified a signature of 17 genes which predicted the test and train sets with a BER of 9.4 and 7.1% resp. Using the exact same train set, BioDiscML identified a signature of 19 genes by optimizing the AUC of a Random Forest model with 100 iterations and using the FSSBSE feature search method. The measured BER on the test set was 7%, and on the train set 3.5, 3.6, 6.8, and 7.2% using 10 CV, LOOCV, and repeated holdout and bootstrapping resp. To select this model among the 4,710 successfully generated models, we simply retrieved the one



**TABLE 1** | Description of the real-world datasets used to evaluate the performance of BioDiscML vs. recent tools.

Name	Description	Features	Instances	References
Stem cells	Fifteen merged transcriptomics microarray sets from multiple platforms. They contain three types of human cells as classes: human Fibroblasts (Fib), embryonic stem cells (ESC), and induced pluripotent stem cells (IPSC)	13,315	Train set: 62 ESC, 105 IPSC, 43 Fib Test set: 33 ESC, 77 IPSC, 22 Fib Total: 210 (train) + 132 (test) = 342 patients	Rohart et al., 2017a
Colon cancer	Transcriptomics microarray available from ColonCA R package in Bioconductor (Gentleman et al., 2006), separated between cancerous from non-cancerous colon tissue	2,000	Sixty-two patients, including 40 tumors and 22 normal cases	Alon et al., 1999
Central nervous system	Microarray gene expression data derived from central nervous system of patients brain tumors to predict embryonal tumor outcome	7,129	Sixty patients, including 39 medulloblastoma survivors, and 21 treatment failures cases	Pomeroy et al., 2002
Diffuse large B-cell lymphoma (DLBCL)	Transcriptomic microarray of pre-treatment biopsies tumor specimens separated in DLBCL and follicular lymphoma	2,647	Seventy-seven patients, including 58 DLBCL and 19 follicular lymphoma	Shipp et al., 2002
Prostate cancer	Microarray expression analysis was used to determine gene expression levels differences between tumor and non-tumor prostate samples	2,135	One hundred two patients, including 52 tumor and 50 normal cases	Singh et al., 2002



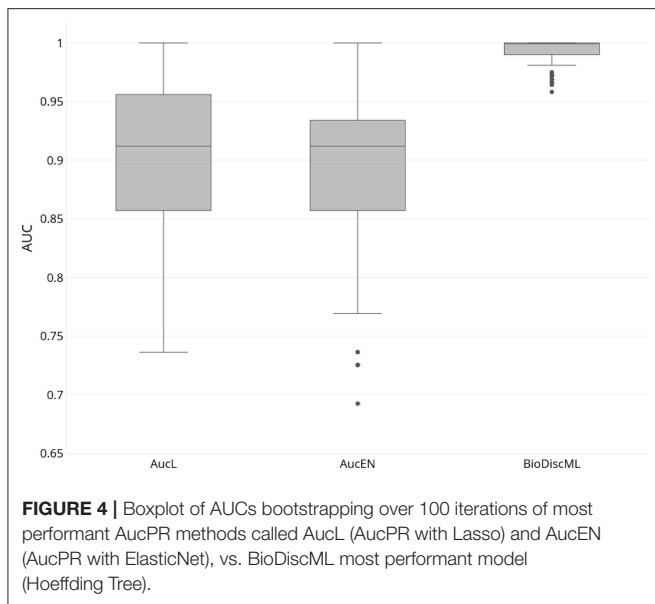
having the lowest BER on the holdout method. Thus, on the same test set, the Random Forest model identified by BioDiscML improved the BER from 9.4 to 7%, corresponding to about 25% relative error decrease (see **Figure 3**).

In their paper, MINT authors have provided the signature identified by their method. Although both signatures found by MINT and BioDiscML have no genes in common, most of level 2 biological processes ontologies (see **Supplementary Data**) obtained by these signatures were identical (cellular process, multicellular organismal process, metabolic process, biological regulation, cellular component organization or biogenesis, localization). Specific biological processes were reproduction and immune system in MINT signature, and response to stimulus and developmental process in BioDiscML signature. A long signature of 71 genes can also be obtained using correlated feature search in BioDiscML. Using this long signature, only immune system process was added compared to the short signature, which also

exists in the MINT signature. Moreover, this long signature provided perfect predictions on all instances of the test set. We also compared both signatures GSEA (see Methods). MINT signature did not show any significantly enriched ontologies, literature co-citation, co-expression etc. At the opposite, the short signature of BioDiscML found about 20 hits related to stem cells in co-expression databases (GeneSigDB and MSigDB) and co-expression Atlas. Also, about 20 other hits were found in literature co-citation about cognitive diseases (Alzheimer, Parkinson, Schizophrenia). The long signature provided even more hits, in many other categories.

### BioDiscML vs. AucPR

In their study, authors of AucPR, an AUC-based approach using penalized regression, have evaluated the performance of their tool against four datasets. While AucPR showed a very good prediction performance on three of four tested datasets, the average AUC on *ColonCA* dataset was about 90% using both best penalization regression approach modes of the tool (Lasso and ElasticNet). Considering AucPR had the lowest performance on this dataset, we tried the performance of BioDiscML on it. In their paper, authors report the boxplots of 100 AUCs obtained by repeated holdout (random separation of 2/3 of the data for training and the remaining for testing) without sampling step. Using the same data and same evaluation method without sampling before training, two models identified by BioDiscML, on the 3,967 successfully generated models, shared the same best average AUC score. We chose the one having the best MCC on repeated holdout, a model based on a Hoeffding Tree (parameters: infogain split, Naive Bayes adaptive leaf prediction strategy, grace period of 200, tie threshold of 0.05) optimized by AUC. This model provided an average AUC of 99.3% (0.632+rule at 0.047) using 10 genes discovered by FSSBSE. This is an improvement of AUC of about 11%. Both AucPR modes AucL and AucEN selected in comparison 30 and 22 genes resp. The



benchmark comparison of AUCs is reported in **Figure 4**. The model identified by BioDiscML has a much better performance in terms of average AUC and variance over bootstrapping. GSEA was not performed since this dataset didn't provided gene identifiers.

## BioDiscML vs. RGIFE

RGIFE is an heuristic method intending to identify reduced panels of biomarkers with highly predictive performance. It first ranks features by their contribution to the generated models, and dynamically removes blocks of features. It also introduces a concept called soft-fail, which considers an iteration successful despite a performance drop within a tolerance level and specific circumstances. We evaluated the performance of BioDiscML on three datasets tested in RGIFE, including Central Nervous System (CNS), DLBCL, and Prostate Cancer datasets. On the 10 tested datasets by RGIFE, the three selected datasets showed accuracies around 60–70% for 10 CV, while BioDiscML identified models and signatures providing prediction performance close to perfection (100% accuracy) with lower number of features. Performances are reported in **Table 2**, where, for each dataset, we identified two models found by BioDiscML. To provide a fair comparison with the RGIFE manuscript we selected models having the best 10 CV accuracy (with best bootstrapping accuracy and lowest number of features in case of models' performance equality), which ended with 100% accurate models. But since this typical measure approach tends to be over-optimistic on the real performance of the models and because overfitting was suspected, we also reported models having the best bootstrapping accuracy. Obtained models show accuracies between 10CV and Bootstrapping more consistent, hence showing models are stable. In any case, 10CV accuracy was always better with BioDiscML results. The two signatures found for CNS dataset presented an overlap of five genes, and a merged list of the signatures show several GSEA significant hits related medulloblastoma

and other cancers. For BLBCL dataset, no genes overlapped the two signatures, and we found significant hits related to dehydrogenase activity in the GSEA analysis on the merged list of the signatures, which has a link with follicular lymphoma to diffuse large B-cell lymphoma (Montoto et al., 2007). Finally, the prostate cancer signatures showed no overlap either, but GSEA analysis on the merge lists show several hits related to this cancer.

In terms of computing performances, on a same server containing four Intel(R) Xeon(R) CPU E5-2695 v2 @ 2.40GHz (48 threads), BioDiscML runtime was 28, 387, and 393 min on CNS, DLBCL, and Prostate Cancer datasets resp., and generated 5,751, 6,479, and 6,408 models resp., without exceeding 16 GB memory usage. In comparison, computation time reported by RGIFE in their **Supplementary Data** show ranges about 180–400 min.

## DISCUSSION

### A Simplified but Customizable Automated ML Tool

BioDiscML tool has been developed to enhance biomarker discovery using an exhaustive ML approach and propose automation of ML steps to perform such task. A large variety of algorithms is available and combinations of strategies are countless if we consider the hyperparameters of all classifiers and feature selection algorithms. This complexity is a barrier to non-expert users attempting to use ML to analyze their data. Thus, we designed BioDiscML to simplify ML steps without penalizing the performance, such as using fast and optimal feature ranking algorithms and feature search methods, limit the number of features after feature ranking, and establish predefined classifiers hyperparameters to reduce computing time. Although editable in BioDiscML configuration file, these intentional limitations provide researchers a program that generate results without intervention within a few hours of calculation on a recent computer.

### A Sampling Procedure to Avoid Overfitted Models

BioDiscML implements a sampling step to assess the non-overfitting and the good performance of identified models and signatures, where it splits the dataset into two stratified (class balancing is preserved) random parts. The program also accepts a second input file as a test dataset, as long as it is in the same format as the train set. In case of very limited instances, it is possible to skip the sampling operation, although not recommended because of the risk to not detect overfitted models. A reasonable number of instances (i.e., samples) should be provided to BioDiscML, else it is expected to obtain models with low performances. For example, we estimate that a highly heterogeneous dataset, such as prostate or breast cancer data, should contain at least half-hundred patients per class, while a dataset based on a study involving cloned living species could be limited to half a dozen individuals per class.

**TABLE 2** | Performances of RGIFE vs. BioDiscML measured by accuracy obtained through 10-fold cross validation (10CV\_ACC) and bootstrapping (BS\_ACC).

Dataset	RGIFE			BioDiscML					
	10CV_ACC	#Features	Model	10CV_ACC	BS_ACC	#Features	Model	Search	Criterion
CNS	77.1	Not reported	KNN	100	80.7	12	A2DE	BSSFSE	AUC
				93.3	98.6	11	HT	FSSBSE	AUC
DLBCL	68	9	RF	100	93	6	A1DE	FSSBSE	MCC
				98.7	98.3	6	NB	FSSBSE	AUC
Prostate cancer	95.2	158	SVM	100	91	12	VFI	BSSFSE	ACC
				99	95.7	10	NB	FSSBSE	AUC

Classifiers evaluated by RGIFE were *K*-Nearest Neighbors (KNN), Random Forest (RF), and Support Vector Machines (SVM). Most performant classifiers identified by BioDiscML were Average two Dependence Estimators (A2DE), Hoeffding Tree (HT), Average 1 Dependence Estimators (A1DE), Voting Features Intervals (VFI), and Naive Bayes (NB). Hyperparameters are described in **Supplementary Data**. Various criteria were used, including AUC, MCC, and FDR, and two feature search BSSFSE and FSSBSE. The signatures are shown in **Supplementary Data**.

## Feature Selection Procedures in BioDiscML Are Fast and Scalable

Omics datasets are generally composed of a thousands of features. To simplify input datasets and save computation time BioDiscML implements a feature ranking and dimension reduction procedure. Many approaches exist (Chandrashekar and Sahin, 2014) and most are applicable to biological problems (Saeys et al., 2007), but we choose to only implement Information Gain (Krishnaiah and Kanal, 1982) for classification, and ReliefF (Robnik-Sikonja and Kononenko, 1997), for regression, since they are fast and highly scalable univariate tests (Saeys et al., 2007). Information Gain shown very good performance on biological data (Li et al., 2004, 2011; Abusamra, 2013), as for ReliefF (Marchiori et al., 2005; He and Yu, 2010; Wang et al., 2016). Besides, their ranking capability provides an easy way to eliminate redundant, non-informative and noisy information, hence our choice to provide only those in BioDiscML.

## BioDiscML Uses All Available Classifiers From a Widely Accepted and Efficient ML Library

There is a plethora of ML algorithms specialized in classification (i.e., categorical class) and regression (i.e., continuous class). BioDiscML covers many of them but can also be manually limited to the most known and widely applied in biomedical research for the development of predictive models such as Random Forest, Decision Trees, Rules, Naive Bayes, Artificial Neural Networks, Bayesian Networks and Support Vector Machines. They all resulted in effective and accurate decision-making (Jagga and Gupta, 2015). But the final models created with these classifiers in various studies were all delivered after an exhaustive search work. BioDiscML aims to reduce this search time by providing the models adapted to user datasets. All ML algorithms are provided by an advanced freely available ML library toolkit, called Weka. Besides this library, various ML libraries exist, such as SciKit-Learn (Nelli, 2015) (written in Python) and packages in R (Lesmeister, 2017). BioDiscML implements Weka library for various reasons, including its wide usage in computational biology (Gewehr et al., 2007; Bendl et al., 2014; Bernardi et al.,

2015; Arganda-Carreras et al., 2017; Chicco, 2017; Alves et al., 2018), its high citation rate (at August 2018) and its highly versatile object-oriented language JAVA (e.g., easy to parallelize, multi-platform compatibility, GUI integration, generally already installed on clients, etc.), which is much faster (Fourment and Gillings, 2008) and scalable than Python or R. Finally, the user can use Weka GUI (graphical interface) to explore BioDiscML results, generate ROC curves or try other combinations of classifiers by hand. For example, the output files generated by BioDiscML are compatible with Weka and can be loaded in its GUI.

## A Combination of Model Search and Feature Search Procedures to Identify Highly Predictive Models

BioDiscML combines the model search and the feature search together to identify biomarker signatures. Using the various search methods (i.e., stepwise and top *k*) and optimized criteria, each model is associated to a signature of features. Forward and backward stepwise search methods return signatures that are optimized on the classifier and the criterion. Note that the backward stepwise search approaches (BSS, BSSFSE) are not the usual “backward elimination” used in the literature (Sutter and Kalivas, 1993) for variables selection since it would be computationally expensive here. Instead, backward selection starts from worst features and will generally return performant models only when most of features have a relatively good univariate information gain or ReliefF score. The signature then reveals a combination of biomarkers which, associated together in a model, provide a highly predictive value of the class.

To assess the overall performance of the models, their robustness and the absence of overfitting, various well-known evaluation methods (Arlot and Celisse, 2010) have been implemented in BioDiscML, because some may not be adapted to all situations. For example, for biomedical studies which generally produce a low number of patients (i.e., instances), bootstrapping is a good alternative to sampling (Chen et al., 2002) (i.e., split in train and test set, involving waste of data). Besides, it is known that *k*-fold cross validation tends to deliver over-optimist performances (Smith et al., 2014). To facilitate the

choice of the best models, we provide many performance metrics that can be averaged over all evaluation methods. BioDiscML also provide an ensemble classifier based on a voting system to include many models with different signatures. This method is known to provide better predictive performance than could be obtained from any of the constituent learning algorithms alone (Polikar, 2006).

## Signature Interpretation Is Still a Challenge

A biologist will want to interpret and validate *in silico* the signature, since there is an obvious relation between the identified biomarkers in a signature and the predicted class (e.g., outcome). To perform such task, there exist many Gene Set Enrichment Analysis (GSEA) tools, such as ToppGene suite (Chen et al., 2009) or Enrichr (Kuleshov et al., 2016). These GSEA tools will provide a characterization of signature and confirm to the biologist if the signature has a biological meaning with the original study from which the dataset have been generated. Some more extensive literature searches may provide more insights and help linking the signatures' features with the predicted class.

Moreover, in some cases, the biologist, based on its experience and knowledge, may not find the biomarkers he expects in the signatures. This is a consequence of the feature search procedure which produces highly optimized signatures. This optimization tends to ignore all redundant features that could potentially help the biological interpretation of the biomarkers related to the class. To overcome this issue, BioDiscML retrieves all correlated features that could have been excluded during the feature subset selection and model search procedure. It is important to note that adding signature's perfectly correlated features (100% correlated) to the model will maintain its performance. At the opposite, it is expected to have a slight performance drop when adding "almost-correlated" features (95–99% correlation), which can be tested by training and evaluation of the model with the added correlated features.

Some scientific visualization tools would have probably been welcome in BioDiscML, but JAVA visualization libraries are rare. However, to overcome this lack, BioDiscML generates a subset of the input dataset containing only the sample values of the signature' features. This subset in comma-separated values format can be loaded easily in other visualization software such as Microsoft Excel, Orange (Demšar et al., 2013), RapidMiner (Hofmann, 2016), or R (Gardener, 2012) to generate heatmaps or boxplots.

## BioDiscML Exhaustive Approach Outperforms Recently Published Tools

We benchmarked BioDiscML against recent tools proposing different approaches to discover biomarker signatures. Benchmarks showed that BioDiscML outperforms these state-of-art methods using same datasets. Because of its exhaustive approach, it was able to identify one or more models with smaller signatures providing much better prediction performances. We also demonstrated in the case of the stem cell dataset that BioDiscML signature contained different genes but similar ontologies than the MINT signature, with a better prediction performance. A GSEA also showed that the BioDiscML signature had much more biological evidence, denoted by the

occurrence of stem cells topics in the co-expression databases. The genes in the BioDiscML signatures were also present in neurodegenerative diseases, highlighting the link of these genes with the neuronal system, supported by evidence of efficient stem cell-based therapies for neural repair (Volkman and Offen, 2017). For the other benchmarked datasets which contained gene references, the GSEA analyses also showed supporting evidences assessing the biological relation between the genes found in the signatures and the biological experiment from where they were produced.

It is important to note that short but still very predictive model' signatures can be extended as an "enriched" signature which include the correlated genes. These enriched signatures may increase the accuracy of the signature, but more importantly they can help to better understand the biological meaning of the model. On the MINT dataset, BioDiscML showed a perfect prediction on the test set with the enriched signature and retrieved more ontologies.

Finally, in this paper we benchmarked BioDiscML only on transcriptomics datasets from microarray data provided by the tools we tested. But BioDiscML showed also good performances in other omics datasets tested in other contexts (data not shown).

## Performant Models Identified in Minutes

BioDiscML computing performances are highly dependent on the size of the input dataset and the available processors. To generate all models implemented in the software, it requires a few hours of computation. However, it is possible to restrict BioDiscML to a specific list of algorithms, hence reducing the computation time to seconds or minutes. It is also possible to extract the best signatures and models produced since the beginning of BioDiscML execution at any time. We have prioritized the training of the most common and fastest classifiers to propose a large number of computed models shortly after starting BioDiscML. More complex models, such as Multilayer perceptrons, are set in low priority. More running time will simply increase the probability to obtain a better model. The user is informed in the command line output the progression of the program (i.e., the number of models trained and remaining to train). Finally, BioDiscML can be stopped at any moment, especially if the user is not interested to let BioDiscML train complex classifiers.

## CONCLUSIONS

This paper introduces BioDiscML, dedicated to identify optimal combination of biomarkers (i.e., features) and machine learning models to predict measured outcomes. It provides a user-friendly and powerful solution to researchers in the medical field looking to identify predictive features, essential to the development of personalized medicine approaches and research of new therapeutic targets. This software has the benefit to exploit a large number of machine learning classifiers within a fully automated process combined with data pre-processing, hence facilitating the work of a non-machine learning experts audience. Expert users have also the possibility to configure advanced options. BioDiscML is a great opportunity to reduce biomarkers search time, by revealing the most adapted classifiers to a given



dataset and even proposes new algorithms poorly explored in the literature that could have a great potential to classify biological data. Otherwise, although this program has been tested with omics data and proven its better performances compared to recent computational biology tools created for the same purpose, it is compatible with any other non-biological data. Finally, the ML library used in BioDiscML is highly maintained, hence enabling convenient additions of newly implemented algorithms in future versions.

## DATA AND SOFTWARE AVAILABILITY

BioDiscML software project and the datasets analyzed during the current study are available at <https://github.com/mickaelleclercq/BioDiscML> under GPL-3.0 license. This software written in JAVA is compatible with the main operating systems. Windows, Linux and Mac.

## AUTHOR CONTRIBUTIONS

ML designed and implemented BioDiscML software, conducted literature searches, researched data and selected relevant articles. ML also created figures and tables, and wrote, formatted and finalized the article for submission. BV were in charge to test the software and report all bugs. MM-M and MS helped to

optimize BioDiscML pipeline and the implemented algorithms. OP helped to improve the manuscript during the reviewing process. AB, YF, and AD supervised and reviewed the design of the study. All authors contributed to writing and reviewing the manuscript.

## FUNDING

This project has been funded in part by the Laboratoire d'Uro-Oncologie Expérimentale of the CHU de Québec directed by YF and by the L'Oréal research chair in digital Biology of Université Laval, directed by AD.

## ACKNOWLEDGMENTS

We thank Dr Kim-Anh Lê Cao (University of Queensland Diamantina Institute, Translational Research Institute, Brisbane, Australia) who provided us the Stem Cells data.

## SUPPLEMENTARY MATERIAL

The Supplementary Material for this article can be found online at: <https://www.frontiersin.org/articles/10.3389/fgene.2019.00452/full#supplementary-material>

## REFERENCES

- Abusamra, H. (2013). A comparative study of feature selection and classification methods for gene expression data of glioma. *Procedia Comput. Sci.* 23, 5–14. doi: 10.1016/j.procs.2013.10.003
- Alon, U., Barkai, N., Notterman, D. A., Gish, K., Ybarra, S., Mack, D., et al. (1999). Broad patterns of gene expression revealed by clustering analysis of tumor and normal colon tissues probed by oligonucleotide arrays. *Proc. Natl. Acad. Sci. U.S.A.* 96, 6745–6750. doi: 10.1073/pnas.96.12.6745
- Alves, P., Liu, S., Wang, D., and Gerstein, M. (2018). Multiple-swarm ensembles: improving the predictive power and robustness of predictive models and its use in computational biology. *IEEE/ACM Trans. Comput. Biol. Bioinform.* 15, 926–933. doi: 10.1109/TCBB.2017.2691329
- Arganda-Carreras, I., Kaynig, V., Rueden, C., Eliceiri, K. W., Schindelin, J., Cardona, A., et al. (2017). Trainable weka segmentation: a machine learning tool for microscopy pixel classification. *Bioinformatics* 33, 2424–2426. doi: 10.1093/bioinformatics/btx180
- Arlot, S., and Celisse, A. (2010). A survey of cross-validation procedures for model selection. *Stat. Surv.* 4, 40–79. doi: 10.1214/09-SS054
- Beerenwinkel, N., Greenman, C. D., and Lagergren, J. (2016). Computational cancer biology: an evolutionary perspective. *PLoS Comput. Biol.* 12:e1004717. doi: 10.1371/journal.pcbi.1004717
- Bendl, J., Stourac, J., Salanda, O., Pavelka, A., Wieben, E. D., Zendulka, J., et al. (2014). PredictSNP: robust and accurate consensus classifier for prediction of disease-related mutations. *PLoS Comput. Biol.* 10:e1003440. doi: 10.1371/journal.pcbi.1003440
- Bernardi, R. C., Melo, M. C. R., and Schulten, K. (2015). Enhanced sampling techniques in molecular dynamics simulations of biological systems. *Biochim. Biophys. Acta* 1850, 872–877. doi: 10.1016/j.bbagen.2014.10.019
- Butti, M. D., Chanfreau, H., Martinez, D., García, D., Lacunza, E., and Abba, M. C. (2014). BioPlat: a software for human cancer biomarker discovery. *Bioinformatics* 30, 1782–1784. doi: 10.1093/bioinformatics/btu111
- Caruana, R., and Freitag, D. (1994). “Greedy attribute selection,” in *Proceedings of the Eleventh International Conference on Machine Learning* (New Brunswick: Rutgers University), 28–36. doi: 10.1016/B978-1-55860-335-6.50012-X
- Chandrashekar, G., and Sahin, F. (2014). A survey on feature selection methods. *Comput. Electr. Eng.* 40, 16–28. doi: 10.1016/j.compeleceng.2013.11.024
- Chen, D. R., Kuo, W. J., Chang, R. F., Moon, W. K., and Lee, C. C. (2002). Use of the bootstrap technique with small training sets for computer-aided diagnosis in breast ultrasound. *Ultrasound Med. Biol.* 28, 897–902. doi: 10.1016/S0301-5629(02)00528-8
- Chen, J., Bardes, E. E., Aronow, B. J., and Jegga, A. G. (2009). ToppGene suite for gene list enrichment analysis and candidate gene prioritization. *Nucleic Acids Res.* 37, W305–W311. doi: 10.1093/nar/gkp427
- Chicco, D. (2017). Ten quick tips for machine learning in computational biology. *BioData Min.* 10:35. doi: 10.1186/s13040-017-0155-3
- Cima, I., Schiess, R., Wild, P., Kaelin, M., Schöffler, P., Lange, V., et al. (2011). Cancer genetics-guided discovery of serum biomarker signatures for diagnosis and prognosis of prostate cancer. *Proc. Natl. Acad. Sci. U.S.A.* 108, 3342–3347. doi: 10.1073/pnas.1013699108
- Cui, J., Chen, Y., Chou, W.-C., Sun, L., Chen, L., Suo, J., et al. (2011). An integrated transcriptomic and computational analysis for biomarker identification in gastric cancer. *Nucleic Acids Res.* 39, 1197–1207. doi: 10.1093/nar/gkq960
- Cun, Y., and Fröhlich, H. (2013). Network and data integration for biomarker signature discovery via network smoothed T-statistics. *PLoS ONE* 8:e73074. doi: 10.1371/journal.pone.0073074
- Cun, Y., and Fröhlich, H. (2014). netClass: an R-package for network based, integrative biomarker signature discovery. *Bioinformatics* 30, 1325–1326. doi: 10.1093/bioinformatics/btu025
- Daoqiang, Z., and Dinggang, S. (2012). Multi-modal multi-task learning for joint prediction of multiple regression and classification variables in Alzheimer's disease. *Neuroimage* 59, 895–907. doi: 10.1016/j.neuroimage.2011.09.069
- Demšar, J., Curk, T., Erjavec, A., Gorup, C., Hočevar, T., Milutinovič, M., et al. (2013). Orange: data mining toolbox in python. *J. Mach. Learn. Res.* 14, 2349–2353.



- Deshpande, G., Libero, L. E., Sreenivasan, K. R., Deshpande, H. D., and Kana, R. K. (2013). Identification of neural connectivity signatures of autism using machine learning. *Front. Hum. Neurosci.* 7:670. doi: 10.3389/fnhum.2013.00670.
- Efron, B. (1983). Estimating the error rate of a prediction rule: improvement on cross-validation. *J. Am. Stat. Assoc.* 78, 316–331. doi: 10.1080/01621459.1983.10477973
- Eslami, A., Qannari, E. M., Kohler, A., and Bougeard, S. (2013). “Multi group PLS Regression: Application to Epidemiology,” in *Springer Proceedings in Mathematics & Statistics*, (Springer Nature Switzerland AG; Part of Springer Nature), 243–255. Available online at: <https://link.springer.com/bookseries/10533>.
- Fekete, T., Zach, N., Mujica-Parodi, L. R., and Turner, M. R. (2013). Multiple kernel learning captures a systems-level functional connectivity biomarker signature in amyotrophic lateral sclerosis. *PLoS ONE* 8:e85190. doi: 10.1371/journal.pone.0085190
- Feurer, M., Klein, A., Eggenberger, K., Springenberg, J., Blum, M., and Hutter, F. (2015). Efficient and robust automated machine learning. *Adv. Neural Inf. Process. Syst.* 28, 2962–2970.
- Fischer, R. (2015). “Java 8: It’s a Whole New Java,” in *Java Closures and Lambda*, (Berkeley, CA: Apress), 1–10. Available online at: <https://www.apress.com/us>.
- Fourment, M., and Gillings, M. R. (2008). A comparison of common programming languages used in bioinformatics. *BMC Bioinformatics* 9:82. doi: 10.1186/1471-2105-9-82
- Fröhlich, H., and Cun, Y. (2012). Prognostic gene signatures for patient stratification in breast cancer - accuracy, stability and interpretability of gene selection approaches using prior knowledge on protein-protein interactions. *BMC Bioinformatics* 13:69. doi: 10.1186/1471-2105-13-69
- Gardner, M. (2012). *Beginning R: The Statistical Programming Language*. Indianapolis, IN: John Wiley & Sons.
- Gentleman, R., Carey, V., Huber, W., Irizarry, R., and Dudoit, S. (2006). *Bioinformatics and Computational Biology Solutions Using R and Bioconductor*. New York, NY: Springer Science & Business Media. doi: 10.1007/0-387-29362-0
- Gewehr, J. E., Szugat, M., and Zimmer, R. (2007). BioWeka—extending the Weka framework for bioinformatics. *Bioinformatics* 23, 651–653. doi: 10.1093/bioinformatics/btl671
- Hall, M., Frank, E., Holmes, G., Pfahringer, B., Reutemann, P., and Witten, I. H. (2009). The WEKA data mining software. *ACM SIGKDD Explorations Newslett.* 11, 10–18. doi: 10.1145/1656274.1656278
- Hartigan, J. A., and Wong, M. A. (1979). Algorithm AS 136: A K-means clustering algorithm. *Appl. Stat.* 28, 100–108. doi: 10.2307/2346830
- He, Z., and Yu, W. (2010). Stable feature selection for biomarker discovery. *Comput. Biol. Chem.* 34, 215–225. doi: 10.1016/j.compbiolchem.2010.07.002
- Hofmann, M. (2016). *RapidMiner Ralf Klinkenberg, RapidMiner: Data Mining Use Cases and Business Analytics Applications*. Available online at: <https://www.oreilly.com/library/view/rapidminer/9781482205503/>.
- Holmes, G., Donkin, A., and Witten, I. H. (1994). *WEKA: A Machine Learning Workbench*. University of Waikato; Department of Computer Science. doi: 10.1109/ANZIS.1994.396988
- Hotelling, H. (1936). Relations between two sets of variates. *Biometrika* 28, 321–377. doi: 10.1093/biomet/28.3-4.321
- Jagga, Z., and Gupta, D. (2015). Machine learning for biomarker identification in cancer research – developments toward its clinical application. *Future Med.* 12, 371–387. doi: 10.2217/pme.15.5
- Janevski, A., Kamalakaran, S., Banerjee, N., Varadan, V., and Dimitrova, N. (2009). PAPAyA: a platform for breast cancer biomarker signature discovery, evaluation and assessment. *BMC Bioinformatics* 10 (Suppl. 9):S7. doi: 10.1186/1471-2105-10-S9-S7
- Johansson, H., Lindstedt, M., Albrekt, A. S., Borrebaeck, C. A. (2011). A genomic biomarker signature can predict skin sensitizers using a cell-based *in vitro* alternative to animal tests. *BMC Genomics* 12:399. doi: 10.1186/1471-2164-12-399
- Kira, K., and Rendell, L. A. (1992). “A practical approach to feature selection,” in *Proceedings of the Ninth International Workshop on Machine Learning (ML 1992)* (Aberdeen), 249–256. doi: 10.1016/B978-1-55860-247-2.50037-1
- Kong, A., Gupta, C., Ferrari, M., Agostini, M., Bedin, C., Bouamrani, A., et al. (2014). Biomarker signature discovery from mass spectrometry data. *IEEE/ACM Trans. Comput. Biol. Bioinform.* 11, 766–772. doi: 10.1109/TCBB.2014.2318718
- Kourou, K., Exarchos, T. P., Exarchos, K. P., Karamouzis, M. V., and Fotiadis, D. I. (2015). Machine learning applications in cancer prognosis and prediction. *Comput. Struct. Biotechnol. J.* 13, 8–17. doi: 10.1016/j.csbj.2014.11.005
- Krishnaiah, P. R., and Kanal, L. N. (1982). “Handbook of Statistics 2,” in *Classification, Pattern Recognition and Reduction of Dimensionality* (North-Holland; Amsterdam; New York, NY: Oxford). Available online at: <https://onlinelibrary.wiley.com/doi/abs/10.1002/bimj.4710270315>.
- Kuleshov, M. V., Jones, M. R., Rouillard, A. D., Fernandez, N. F., Duan, Q., Wang, Z., et al. (2016). Enrichr: a comprehensive gene set enrichment analysis web server 2016 update. *Nucleic Acids Res.* 44, W90–W97. doi: 10.1093/nar/gkw377
- Lê Cao, K. A., González, I., and Déjean, S. (2009). integrOmics: an R package to unravel relationships between two omics datasets. *Bioinformatics* 25, 2855–2856. doi: 10.1093/bioinformatics/btp515
- Lagani, V., Kortas, G., and Tsamardinos, I. (2013). Biomarker signature identification in “omics” data with multi-class outcome. *Comput. Struct. Biotechnol. J.* 6:e201303004. doi: 10.5936/csbj.201303004
- Lesmeister, C. (2017). *Mastering Machine Learning with R*. Birmingham: Packt Publishing Ltd.
- Li, T., Zhang, C., and Ogihara, M. (2004). A comparative study of feature selection and multiclass classification methods for tissue classification based on gene expression. *Bioinformatics* 20, 2429–2437. doi: 10.1093/bioinformatics/bth267
- Li, X., Peng, S., Zhan, X., Zhang, J., and Xu, Y. (2011). “Comparison of feature selection methods for multiclass cancer classification based on microarray data,” in *2011 4th International Conference on Biomedical Engineering and Informatics (BMEI)* (Shanghai). doi: 10.1109/bmei.2011.6098612
- Libbrecht, M. W., and Noble, W. S. (2015). Machine learning applications in genetics and genomics. *Nat. Rev. Genet.* 16, 321–332. doi: 10.1038/nrg3920
- Lin, Y., Qian, F., Shen, L., Chen, F., Chen, J., and Shen, B. (2017). Computer-aided biomarker discovery for precision medicine: data resources, models and applications. *Brief. Bioinform.* doi: 10.1093/bib/bbx158
- Liu, R., Wang, X., Aihara, K., and Chen, L. (2014). Early diagnosis of complex diseases by molecular biomarkers, network biomarkers, and dynamical network biomarkers. *Med. Res. Rev.* 34, 455–478. doi: 10.1002/med.21293
- Mao, K. Z. (2004). Orthogonal forward selection and backward elimination algorithms for feature subset selection. *IEEE Trans. Syst. Man Cybern. B Cybern.* 34, 629–634. doi: 10.1109/TSMCB.2002.804363
- Marchiori, E., Heegaard, N. H. H., West-Nielsen, M., and Jimenez, C. R. (2005). “Feature selection for classification with proteomic data of mixed quality,” in *2005 IEEE Symposium on Computational Intelligence in Bioinformatics and Computational Biology* (La Jolla, CA) doi: 10.1109/cibcb.2005.1594944
- Matsumura, K., Opiakun, M., Oka, H., Vachani, A., Albelda, S. M., Yamazaki, K., et al. (2010). Urinary volatile compounds as biomarkers for lung cancer: a proof of principle study using odor signatures in mouse models of lung cancer. *PLoS ONE* 5:e8819. doi: 10.1371/journal.pone.0008819
- Maugis, C., Celeux, G., and Martin-Magniette, M.-L. (2011). Variable selection in model-based discriminant analysis. *J. Multivar. Anal.* 102, 1374–1387. doi: 10.1016/j.jmva.2011.05.004
- Montoto, S., Davies, A. J., Matthews, J., Calaminici, M., Norton, A. J., Amess, J., et al. (2007). Risk and clinical implications of transformation of follicular lymphoma to diffuse large B-cell lymphoma. *J. Clin. Oncol.* 25, 2426–2433. doi: 10.1200/JCO.2006.09.3260
- Nelli, F. (2015). “Machine learning with scikit-learn,” in *Python Data Analytics*, (Berkeley, CA: Apress), 237–264. Available online at: <https://www.apress.com/us>.
- Pasolli, E., Truong, D. T., Malik, F., Waldron, L., and Segata, N. (2016). Machine learning meta-analysis of large metagenomic datasets: tools and biological insights. *PLoS Comput. Biol.* 12:e1004977. doi: 10.1371/journal.pcbi.1004977
- Polikar, R. (2006). Ensemble based systems in decision making. *IEEE Circuits Sys. Magazine* 6, 21–45. doi: 10.1109/MCAS.2006.1688199
- Pomeroy, S. L., Tamayo, P., Gaasenbeek, M., Sturla, L. M., Angelo, M., McLaughlin, M. E., et al. (2002). Prediction of central nervous system embryonal tumour outcome based on gene expression. *Nature* 415, 436–442. doi: 10.1038/415436a
- Reunanen, J. (2003). Overfitting in making comparisons between variable selection methods. *J. Mach. Learn. Res.* 3, 1371–1382.
- Robnik-Sikonja, M., and Kononenko, I. (1997). “An adaptation of Relief for attribute estimation in regression,” in *Fourteenth International Conference on Machine Learning* (Nashville, TN), 296–304.

- Rohart, F., Eslami, A., Matigian, N., Bougeard, S., and Lê Cao, K.-A. (2017a). MINT: a multivariate integrative method to identify reproducible molecular signatures across independent experiments and platforms. *BMC Bioinformatics* 18:128. doi: 10.1186/s12859-017-1553-8
- Rohart, F., Gautier, B., Singh, A., and Cao, K. A. (2017b). mixOmics: an R package for 'omics feature selection and multiple data integration. *PLoS Comput. Biol.* 13:e1005752. doi: 10.1371/journal.pcbi.1005752
- Rohart, F., Gautier, B., Singh, A., and Le Cao, K.-A. (2017c). mixOmics: an R package for omics feature selection and multiple data integration. *PLoS Comput. Biol.* 13:e1005752. doi: 10.1101/108597
- Roth, P., Wischhusen, J., Happend, C., Chandran, P. A., Hofer, S., Eisele, G., et al. (2011). A specific miRNA signature in the peripheral blood of glioblastoma patients. *J. Neurochem.* 118, 449–457. doi: 10.1111/j.1471-4159.2011.07307.x
- Saeyns, Y., Inza, I., and Larrañaga, P. (2007). A review of feature selection techniques in bioinformatics. *Bioinformatics* 23, 2507–2517. doi: 10.1093/bioinformatics/btm344
- Sasikala, S., Appavu alias Balamurugan, S., and Geetha, S. (2016). Multi filtration feature selection (MFFS) to improve discriminatory ability in clinical data set. *Appl. Comput. Inf.* 12, 117–127. doi: 10.1016/j.aci.2014.03.002
- Shipp, M. A., Ross, K. N., Tamayo, P., Weng, A. P., Kutok, J. L., Aguiar, R. C. T., et al. (2002). Diffuse large B-cell lymphoma outcome prediction by gene-expression profiling and supervised machine learning. *Nat. Med.* 8, 68–74. doi: 10.1038/nm0102-68
- Singh, D., Febbo, P. G., Ross, K., Jackson, D. G., Manola, J., Ladd, C., et al. (2002). Gene expression correlates of clinical prostate cancer behavior. *Cancer Cell* 1, 203–209. doi: 10.1016/S1535-6108(02)00030-2
- Smith, G. C. S., Seaman, S. R., Wood, A. M., Royston, P., and White, I. R. (2014). Correcting for optimistic prediction in small data sets. *Am. J. Epidemiol.* 180, 318–324. doi: 10.1093/aje/kwu140
- Sutherland, A., McLean, A., Tang, B., Venter, D., Price, G., Stone, G., et al. (2011). Development and validation of a novel molecular biomarker diagnostic test for the early detection of sepsis. *Crit. Care* 15:R149. doi: 10.1186/cc10274
- Sutter, J. M., and Kalivas, J. H. (1993). Comparison of forward selection, backward elimination, and generalized simulated annealing for variable selection. *Microchem. J.* 47, 60–66. doi: 10.1006/mchj.1993.1012
- Swan, A. L., Mobasher, A., Allaway, D., Liddell, S., and Bacardit, J. (2013). Application of machine learning to proteomics data: classification and biomarker identification in postgenomics biology. *OMICS* 17, 595–610. doi: 10.1089/omi.2013.0017
- Swan, A. L., Stekel, D. J., Hodgman, C., Allaway, D., Alqahtani, M. H., Mobasher, A., et al. (2015). A machine learning heuristic to identify biologically relevant and minimal biomarker panels from omics data. *BMC Genomics* 16 (Suppl. 1):S2. doi: 10.1186/1471-2164-16-S1-S2
- Taverner, T., Karpievitch, Y. V., Polpitiya, A. D., Brown, J. N., Dabney, A. R., Anderson, G. A., et al. (2012). DanteR: an extensible R-based tool for quantitative analysis of -omics data. *Bioinformatics* 28, 2404–2406. doi: 10.1093/bioinformatics/bts449
- Thornton, C., Hutter, F., Hoos, H. H., and Leyton-Brown, K. (2013). “AutoWEKA,” in *Proceedings of the 19th ACM SIGKDD International Conference on Knowledge Discovery and Data Mining - KDD'13* (Chicago, IL). doi: 10.1145/2487575.2487629
- Volkman, R., and Offen, D. (2017). Concise review: mesenchymal stem cells in neurodegenerative diseases. *Stem Cells* 35, 1867–1880. doi: 10.1002/stem.2651
- Wang, L., Wang, Y., and Chang, Q. (2016). Feature selection methods for big data bioinformatics: a survey from the search perspective. *Methods* 111, 21–31. doi: 10.1016/j.ymeth.2016.08.014
- Witten, I. H., Frank, E., Hall, M. A., and Pal, C. J. (2016). *Data Mining: Practical Machine Learning Tools and Techniques*. Hamilton, ON: University of Waikato, Morgan Kaufmann.
- Wold, H. (1975). “Path models with latent variables: the NIPALS approach,” in *Quantitative Sociology* (Academic Press; Quantitative Sociology), 307–357. Available online at: <https://www.sciencedirect.com/book/9780121039509/quantitative-sociology#book-description>.
- Yao, F., Coquery, J., and Lê Cao, K. A. (2012). Independent principal component analysis for biologically meaningful dimension reduction of large biological data sets. *BMC Bioinformatics* 13:24. doi: 10.1186/1471-2105-13-24
- Yu, W., and Park, T. (2014). AucPR: an AUC-based approach using penalized regression for disease prediction with high-dimensional omics data. *BMC Genomics* 15 (Suppl. 10):S1. doi: 10.1186/1471-2164-15-S10-S1
- Zhang, P., Cox, A., Cripps, A., and West, N. (2017). “Integrated biomedical data analysis utilizing various types of data for biomarkers identification,” in *2017 IEEE International Conference on Bioinformatics and Biomedicine (BIBM)* (Kansas City, MO). doi: 10.1109/BIBM.2017.8217879
- Zhang, T. (2011). Adaptive forward-backward greedy algorithm for learning sparse representations. *IEEE Trans. Inf. Theory* 57, 4689–4708. doi: 10.1109/TIT.2011.2146690

**Conflict of Interest Statement:** OP was employed by company L'Oréal.

The remaining authors declare that the research was conducted in the absence of any commercial or financial relationships that could be construed as a potential conflict of interest.

Copyright © 2019 Leclercq, Vittrant, Martin-Magniette, Scott Boyer, Perin, Bergeron, Fradet and Droit. This is an open-access article distributed under the terms of the Creative Commons Attribution License (CC BY). The use, distribution or reproduction in other forums is permitted, provided the original author(s) and the copyright owner(s) are credited and that the original publication in this journal is cited, in accordance with accepted academic practice. No use, distribution or reproduction is permitted which does not comply with these terms.