



HAL
open science

Geographic variations of the bird-borne structural risk of West Nile virus circulation in Europe

Benoit Durand, Annelise Tran, Gilles Balança, Véronique Chevalier

► **To cite this version:**

Benoit Durand, Annelise Tran, Gilles Balança, Véronique Chevalier. Geographic variations of the bird-borne structural risk of West Nile virus circulation in Europe. PLoS ONE, 2017, 12 (10), 15 p. 10.1371/journal.pone.0185962 . hal-02625587

HAL Id: hal-02625587

<https://hal.inrae.fr/hal-02625587>

Submitted on 26 May 2020

HAL is a multi-disciplinary open access archive for the deposit and dissemination of scientific research documents, whether they are published or not. The documents may come from teaching and research institutions in France or abroad, or from public or private research centers.

L'archive ouverte pluridisciplinaire **HAL**, est destinée au dépôt et à la diffusion de documents scientifiques de niveau recherche, publiés ou non, émanant des établissements d'enseignement et de recherche français ou étrangers, des laboratoires publics ou privés.



Distributed under a Creative Commons Attribution 4.0 International License

RESEARCH ARTICLE

Geographic variations of the bird-borne structural risk of West Nile virus circulation in Europe

Benoit Durand¹, Annelise Tran^{2,3}, Gilles Balança³, Véronique Chevalier^{3,4*}

1 University Paris Est, Anses, Laboratory for Animal Health, Epidemiology Unit, Maisons-Alfort, France, **2** Cirad, UMR TETIS, Montpellier, France, **3** Cirad, UMR ASTRE, Montpellier, France, **4** Institut Pasteur du Cambodge, Epidemiology and Public Health Unit, Phnom Penh, Cambodia

* chevalier@cirad.fr



Abstract

The structural risk of West Nile Disease results from the usual functioning of the socio-ecological system, which may favour the introduction of the pathogen, its circulation and the occurrence of disease cases. Its geographic variations result from the local interactions between three components: (i) reservoir hosts, (ii) vectors, both characterized by their diversity, abundance and competence, (iii) and the socio-economic context that impacts the exposure of human to infectious bites. We developed a model of bird-borne structural risk of West Nile Virus (WNV) circulation in Europe, and analysed the association between the geographic variations of this risk and the occurrence of WND human cases between 2002 and 2014. A meta-analysis of WNV serosurveys conducted in wild bird populations was performed to elaborate a model of WNV seropositivity in European bird species, considered a proxy for bird exposure to WNV. Several eco-ethological traits of bird species were linked to seropositivity and the statistical model adequately fitted species-specific seropositivity data (area under the ROC curve: 0.85). Combined with species distribution maps, this model allowed deriving geographic variations of the bird-borne structural risk of WNV circulation. The association between this risk, and the occurrence of WND human cases across the European Union was assessed. Geographic risk variations of bird-borne structural risk allowed predicting WND case occurrence in administrative districts of the EU with a sensitivity of 86% (95% CI: 0.79–0.92), and a specificity of 68% (95% CI: 0.66–0.71). Disentangling structural and conjectural health risks is important for public health managers as risk mitigation procedures differ according to risk type. The results obtained show promise for the prevention of WND in Europe. Combined with analyses of vector-borne structural risk, they should allow designing efficient and targeted prevention measures.

OPEN ACCESS

Citation: Durand B, Tran A, Balança G, Chevalier V (2017) Geographic variations of the bird-borne structural risk of West Nile virus circulation in Europe. PLoS ONE 12(10): e0185962. <https://doi.org/10.1371/journal.pone.0185962>

Editor: Massimo Ciccozzi, National Institute of Health, ITALY

Received: July 9, 2017

Accepted: September 24, 2017

Published: October 12, 2017

Copyright: © 2017 Durand et al. This is an open access article distributed under the terms of the [Creative Commons Attribution License](https://creativecommons.org/licenses/by/4.0/), which permits unrestricted use, distribution, and reproduction in any medium, provided the original author and source are credited.

Data Availability Statement: Data are extracted from the literature review and available in Supplementary materials.

Funding: This study was partially funded by MOBOD project, ECDC public tender OJ/2012/02/16 – PROC/2012/015: Indicative Precursors of Mosquitoes-borne Disease Outbreaks in Europe.

Competing interests: The authors have declared that no competing interests exist.

Introduction

West Nile disease (WND) is caused by the West Nile virus (WNV) (*Flavivirus, Flaviviridae*). The transmission cycle involves wild and domestic birds as main hosts and mosquitoes, mainly of the *Culex* genus, as vectors. Under favourable environmental conditions, this cycle may be

amplified and lead to human and horse infections. The latter two are considered dead-end hosts [1]. Most human cases remain asymptomatic. However, around 30% of infected people get sick, with symptoms ranging from a flu syndrome to encephalitic diseases, with recent reported fatality rates ranging from 3 to 17% [2,3]. Ten percent of horses infected by WNV present neurological disorders [4,5]. WNV has been circulating in the Mediterranean Basin at least since the 1950s [6]. Most of human and/or equine cases were caused by strains belonging to lineage 1a, characterized by a moderate pathogenicity for horses and humans and a limited or no pathogenicity for birds [7]. However, since 2000, WNV epidemiological pattern has evolved with an increase of mortality in some bird species, and a higher incidence of animal and human neurological cases. Furthermore, lineage 2 strains, so far confined to the south of the Sahara, has been first detected in 2004 in Hungary and thereafter in several countries of central and southern Europe [8–13].

The structural risk of WND results from the usual functioning of the socio-ecological system, which may more or less favor the introduction of the pathogen, its circulation and the occurrence of clinical cases. The conjectural risk corresponds to the combination of external features, such as climatic events, that may modify the assembly of avian and mosquito species in their composition and/or their competence, and favor or not virus transmission. Geographic variations of structural risk of WND emerge from the local interactions between three components: (i) reservoir hosts, (ii) vectors, both characterized by their diversity, abundance and competence; and the (iii) socio-economic context that impacts the exposure of human to infectious bites [14–17]. Local European bird population composition and abundance strongly vary in space and time. The intrinsic receptivity (i.e. the permissiveness to infection and the capacity to replicate and transmit the virus to another host) [18] of European bird species to WNV infection has been poorly studied. Their exposure to mosquito bites varies according to their physical characteristics (size and weight), as well as to their eco-ethological features [18–22]. According to life history theory, “fast-lived” species would invest minimally in adaptive immunity, contrary to “slow-lived” species. As a consequence, (i) the potential to transmit a given pathogen would be higher for “fast-lived” species than for “slow-lived” ones [23]; (ii) because of the life-long WNV immunity, a constant exposure to the same force of infection will lead to a higher proportion of susceptible individuals in fast-lived species than in “slow-lived” ones. Fast-lived species are thus assumed to play the main role in WNV circulation. Because of their short lifespan (a few years) and assuming that mortality due to infection is negligible, species-specific seroprevalence in these birds can be considered a relevant indicator for the species implication in WNV epidemiological cycle. Majority of fast-lived birds are passerines. A passerine is any birds of the order) Passeriformes, the largest and most diverse commonly recognized clade of birds. The breeding behaviour of these birds is diverse: most species are solitary nesters, but other may be colonial nesters, defending only the nest site and a small area immediately adjacent to it. Some species build individual nests close together in a colony. Nest sites are varied: they include holes in the ground, trees, banks, and rock crevices; they may be on ledges, on the surface of the ground, within the larger nests of other species or near wasp nests and in a wide variety of vegetation—grasses, shrubs, and trees.

The objective of this study was to analyse the geographic variations of the bird-borne structural risk of WND in Europe, and analyse the association between this structural risk and the occurrence of WND cases across the European Union (EU)

Materials and methods

A meta-analysis of WNV serosurveys conducted in wild bird populations was first performed to elaborate a statistical model of WNV seropositivity in European fast-lived bird species,

according to several eco-ethological traits likely impacting on bird exposure to mosquito bites. The statistical model was then used to rank 150 European fast-lived bird species according to the predicted seropositivity level. These results were combined with the distribution in Europe of these 150 bird species to derive geographic variations of the bird-borne structural risk of WNV circulation. The association between this structural risk, considered as a predictor, and the occurrence of WND cases across the European Union (EU) was finally analysed.

Bird ecological traits

Several ecological traits were considered as potential risk factors for WNV seropositivity. Bird migration induces a greater exposure to WNV in birds that spent part of the year in sub-saharian endemic areas [20]. Body mass is linked to WNV seropositivity by two mechanisms: (i) larger birds release more CO₂ and are thus more attractive for mosquitoes, (ii) body mass is linked to life span and the duration of WNV antibodies is lifelong: for a given exposure level to WNV, older birds (i.e. birds of larger species) will be more often seropositive than younger birds (i.e. birds of smaller species). The breeding season may impact the exposure of birds to infectious bites, (e.g. male specimens of territorial species), especially during nesting. Adult birds are less mobile during the breeding season period than during the rest of the year. The nest shape and location modulate the exposure of adults and chicks to mosquito bites, as does the feather coverage for chicks [24]. Many mosquito species exhibit vertical height specialization for host seeking [25]: birds building nests on the ground may be less exposed than birds building medium nests. Because of a lower avian biodiversity and a different vector species composition, the use of urban habitats may impact bird exposure to infectious bites. Finally, the gregariousness may impact exposure to infectious bites, either towards an increase because large groups of birds are more attractive for vectors than solitary individuals, or towards a decrease: solitary individuals may be more frequently bitten than individuals of a large group because of a higher mosquito-to-bird ratio [26].

Since most passerine species fall within the range of about 15 to 50 grams in weight, a dataset was generated for 150 European bird species weighing <50g in adult specimens (see S1 Table) [27]. In this database, each species was associated with the adult body mass (in grams), the nest height (3 classes: nest built on the ground, <4 meters, >4 meters: birds nesting above 4 meters, usually nest in bush, building holes or bird-houses, and most of them weight less than 50g), the exposure of nestling (altricial species—with no or minimal feather coverage, vs precocial species), the use of urban/suburban habitats (absence or rare vs other cases), the nocturnal gregariousness (birds spend the night in large groups, yes/no), the breeding sociality (birds congregate during the breeding period, yes/no) and the migratory status (migratory if most of the birds spent the European winter in sub-saharian regions, non-migratory otherwise). Ecological traits were defined and assigned to each species according to [27].

Geographic distribution of bird species in Europe

The distribution area of each of the 150 European bird species weighing <50g was obtained from BirdLife International (BirdLife International and NatureServe, 2012, “Bird species distribution maps of the world”, available from <http://www.birdlife.org/>). Provided maps give, for each species, the contours of the European zones where it can usually be found. However, inside these zones, the presence of birds may strongly vary locally, according to the biotopes. The geographic distribution of birds was thus refined, taking into account the habitat preferences of each bird species provided in Cramp, et al [27]. To do so, a global land cover map produced by the European Space Agency (Source Data: Globcover ESA/ESA Globcover Project, led by MEDIAS-France/POSTEL) was used to define distinct habitats. For each of the 25 land

cover classes, a binary variable (presence/absence) was associated to each bird species (see [S2 Table](#)). For each bird species, this dataset was combined with the Globcover map and the repartition area (used as a mask) to generate a map of the geographic distribution of the species, with binary 100x100 m pixels set to 0 outside the repartition area, or inside the repartition area for non-favourable habitats, and pixels set to 1 inside the repartition area for favourable habitats.

WNV seroprevalence data in wild birds

To build a statistical model linking WNV seropositivity in European fast-lived bird species, and eco-ethological traits, a systematic review of WNV serosurveys conducted in European wild bird populations was performed. This review was done according to the methodology provided in Moher et al [28] (see [S3 Table](#)). PubMed and Scopus databases were searched to identify relevant serological studies published after the 1st January of 2000, using the following query: (West Nile [title]) AND (bird* [title/abstract] OR sero* [title/abstract]) AND ("2000/01/01" [Date—Publication]: "3000" [Date—Publication]). Inclusion criteria used to identify the final list of publications were the geographic area where the survey was performed (Europe and Maghreb where many European birds spent part of their life), and the report of original serological data in birds. Reviews, experimental studies, descriptions of clinical disease, pathogenicity and diagnosis, transversal and longitudinal surveys conducted in domestic or captive birds were discarded, as well as studies based on dead wild birds only. The resulting articles were read, and the relevant papers cited by these articles but not identified by the above selection procedure were then included in the review. Studies for which the serological results were not given at the species level and serological results obtained using laboratory methods other than virus neutralization tests (VNT) were discarded. The datasets of serological results selected were collected in a database, with 4 variables: the study id, the species name, the number of tested birds and the number of positive birds (see [S4 Table](#)).

Statistical modelling of WNV seropositivity in wild birds

WNV seroprevalence data were analysed using logistic mixed models. The dependent variable was the serological status of birds. The study was treated as a random effect, to account for differences between studies according to the country, year and month where the birds were caught and sampled, as well as to differences in study designs such as the cut-off points used in VNT. Two models were compared based on the Akaike Information Criterion (AIC) [29]. In the “traits-based model”, the above potential risk factors for WNV seropositivity were included as fixed effects, whereas in the “species-based model” the single fixed effect was the species. The absence of significant multicollinearity was checked for the traits-based model by verifying that the variance inflation factor was <5 for each of the fixed effects. Parametric bootstrap (1000 repetitions) was used to compute the confidence intervals of the odds-ratios. The fit of the model was evaluated using the receiver operating characteristic (ROC curve) and by computing the area under the curve (AUC). A split sample cross-validation was conducted to evaluate the reliability of the traits-based model (2/3 of the dataset randomly selected for estimation, and 1/3 for prediction, 100 repetitions). The mean AUC was compared with that obtained using the full dataset: the reliability of the model was judged satisfactory if the difference was low (less than 0.1).

Geographic variations of bird-borne structural risk of WNV circulation

The traits-based model was used to predict the seroprevalence in the 150 European bird species weighing <50g. Only fixed effects were taken into account. For each species, a point

estimate was produced using the original dataset, and the species rank was calculated based on these predictions. Parametric bootstrap (100 repetitions) was used to compute the corresponding confidence intervals. The corresponding 100 seroprevalence predictions were then used to build 100 bootstrapped risk maps, by computing the value of each pixel as follows:

$$R_k(i, j) = \sum_{sp=1}^{150} [H(sp, i, j) \times P_k(sp)], \text{ where :}$$

- $R_k(i, j)$ is the risk value associated to pixel of coordinates (i, j) , based on the predictions of the k th bootstrap repetition,
- $H(sp, i, j)$ is 1 if the pixel of (i, j) is located in the repartition area of species sp and if the habitat found in this pixel is favourable to this species; and 0 otherwise,
- $P_k(sp)$ is the predicted seroprevalence for species sp , according to the k th bootstrap repetition.

The 100 bootstrapped risk maps obtained were finally summarized into a single risk map associating to each pixel a 0–100 value: the proportion of the 100 bootstrapped risk maps in which this pixel was above the 90th percentile of the distribution of pixel values. Considering as “high-risk” pixels for which the risk was above the 90th percentile of the distribution, this final risk map thus indicated, for each pixel, the probability to be a high-risk pixel.

Comparison of bird-borne structural risk of WNV circulation with epidemiological data

The relationship between the final risk map and the occurrence of WND cases in human was analysed using a logistic model. Epidemiological data were the number of WND cases per administrative district (NUTS3 level) between 2002 and 2014 in the European Union. The sensitivity of case detection was assumed similar between administrative districts and countries. This dataset was generated from several sources, as described in [30]. Two quantitative predictors were analysed: the proportion of pixels for which the predicted risk was >50% (i.e. pixels with a >50% probability to be high-risk pixels), and the proportion of pixels for which the predicted risk was >80% (i.e. pixels with a >80% probability to be high-risk pixels). The district human population size was added as an adjustment variable, and treated as qualitative ordinal variable with 4 classes (quartiles of the distribution). The absence of significant multi-collinearity was checked as described above. The odds-ratios associated to the predictors were computed, and the fit quality of the model was evaluated by computing the AUC of the ROC curve. The reliability of the model was evaluated using a split-sample cross-validation (90% of the dataset for estimation and 10% for prediction, 10 repetitions). The predicted district-level risk of WND cases was computed and mapped using a choropleth map.

Results

The PubMed and Scopus initial query (launched on 2016-01-20) returned 276 articles, and six articles identified through other sources were also considered. The results of the PRISMA method for paper selection are provided in Fig 1. Application of inclusion/exclusion criteria resulted in 18 papers (Table 1) describing studies conducted in 10 countries -9 European countries and Morocco, and providing original data of WNV seroprevalence in wild birds of species weighing <50g in adult specimens. These studies reported a total number of 7685 serological results in 64 bird species (21 families), of which a total number of 103 birds of 32 species and 15 families were seropositive.

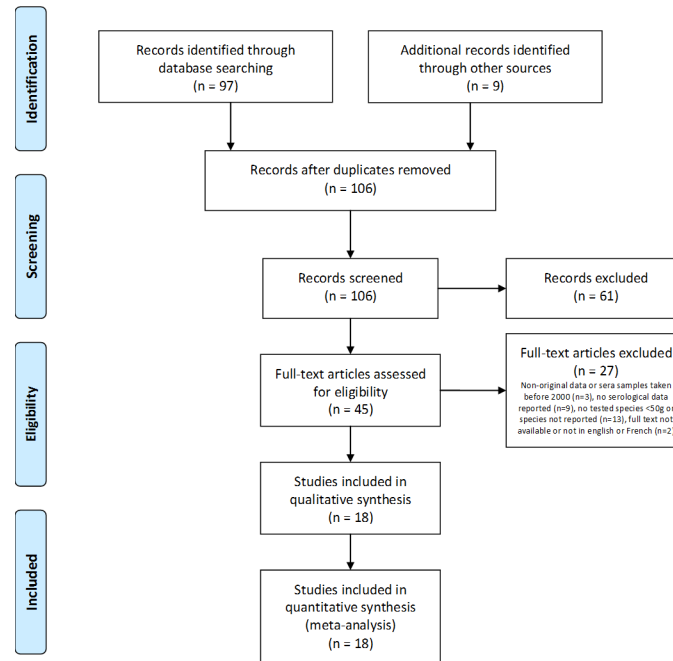


Fig 1. PRISMA flow diagram for included paper selection (adapted from [28]).

<https://doi.org/10.1371/journal.pone.0185962.g001>

The AIC was 359 for the traits-based model and 369 for the species-based model: the traits-based model fitted seroprevalence data more parsimoniously than the species-based model. Several traits were associated with WNV seropositivity (Table 2). The body mass was positively

Table 1. WNV seroprevalence data in wild birds of Europe and Maghreb, reported in scientific publications between 2000 and 2015.

Country	Year	All bird species		<50g bird species		Ref.
		Tested birds (species)	Positive birds (species)	Tested birds (species)	Positive birds (species)	
France	2000	460 (5)	13 (3)	117 (1)	0 (0)	[31]
	2004	432 (32)	19 (8)	370 (15)	18 (7)	[32]
	2004	227 (3)	4 (2)	196 (2)	1 (1)	[33]
	2005–2007	2350 (13)	11 (3)	2848 (7)	7 (1)	[34]
Spain	2003–2005	1213 (72)	126 (24)	462 (31)	10 (5)	[20]
	2004	524 (25)	22 (4)	472 (18)	18 (3)	[22]
	2013	149 (32)	1 (1)	121 (25)	1 (1)	[35]
Germany	2000–2005	3399 (87)	53 (5)	169 (6)	8 (5)	[36]
	2005–2009	1086 (57)	41 (10)	7 (5)	2 (1)	[37]
	2011–2013	902 (88)	45 (20)	21 (2)	4 (2)	[38]
Italy	2006–2008	1405 (47)	3 (3)	1175 (33)	2 (2)	[39]
	2012–2013	233 (43)	16 (6)	11 (5)	1 (1)	[40]
Czech rep.	2004–2006	391 (28)	23 (10)	311 (16)	16 (9)	[41]
Sweden	2005–2006	1935 (104)	2 (2)	726 (7)	2 (2)	[42]
Romania	2007–2008	713 (20)	37 (9)	327 (6)	8 (2)	[43]
Poland	2010–2014	474 (15)	63 (2)	20 (2)	1 (1)	[44]
Serbia	2012	133 (45)	7 (3)	33 (9)	0 (0)	[45]
Morocco	2008	346 (16)	12 (3)	299 (9)	4 (1)	[46]
Total				7685 (64)	103 (32)	

<https://doi.org/10.1371/journal.pone.0185962.t001>

Table 2. Model of WNV seropositivity in birds weighing less than 50 grams, based on species ecological traits.

Ecological trait	Odds-ratio (95% confidence interval ^a)	p-value
Intercept	0.007 (0.001–0.02)	<0.001
Body mass^b:		
<12 grams	Reference	
12–18 grams	2.3 (1.0–5.4)	0.02
18–28 grams	3.6 (1.5–8.9)	0.004
>28 grams	3.1 (1.4–8.1)	0.006
Nest height:		
Above ground and <4 meters	Reference	
On the ground	2.7 (1.4–4.9)	0.003
>4 meters	0.4 (0.1–1.2)	NS ^c
Exposure of nestlings:		
Precocial species	Reference	
Altricial species	2.1 (1.2–3.8)	0.01
Use of urban/suburban habitats:		
Absence or rare	Reference	
Other cases	1.0 (0.4–2.2)	NS
Nocturnal gregariousness:		
No	Reference	
Yes	0.8 (0.5–1.5)	NS
Breeding sociality:		
No	Reference	
Yes	0.6 (0.2–1.9)	NS
Migratory status:		
No	Reference	
Yes ^d	0.7 (0.4–1.7)	NS

^aParametric bootstrap confidence intervals.

^bClasses based on quartiles of body mass in the 150 European species weighing less than 50 grams.

^cNot significant.

^dMost of the birds spent the European winter south to the Sahara.

<https://doi.org/10.1371/journal.pone.0185962.t002>

linked to WNV seropositivity. A protective effect of nest location was observed. Species that build their nest on the ground appeared more exposed to WNV (OR: 2.7) than species that build their nest at an intermediate height. Seropositivity was significantly higher in altricial species than in precocial species (OR: 2.1). There was no statistical link between the use of urban/suburban habitats, the nocturnal gregariousness, the breeding sociality and the migratory status and WNV seropositivity. The AUC of the ROC curve was 0.85 (95% confidence interval [CI]: 0.81–0.89), and the split-sample cross-validation resulted in a mean AUC of 0.80, suggesting a reasonably good reliability of the traits-based model. This model was used to predict the seroprevalence in the 150 European bird species weighing <50g.

The bird-borne structural risk map showed areas with a strong probability (>80%) to be high-risk in Maghreb countries (Morocco, Algeria and Tunisia), Turkey, Ukraine, Moldavia and Western Russia. Within The European Union, high-risk areas were mainly located in Mediterranean countries (Fig 2).

Between 2002 and 2014, human cases of WND were reported in 105 of 1311 administrative districts (NUTS3 level) of the European Union (http://ecdc.europa.eu/en/healthtopics/west_

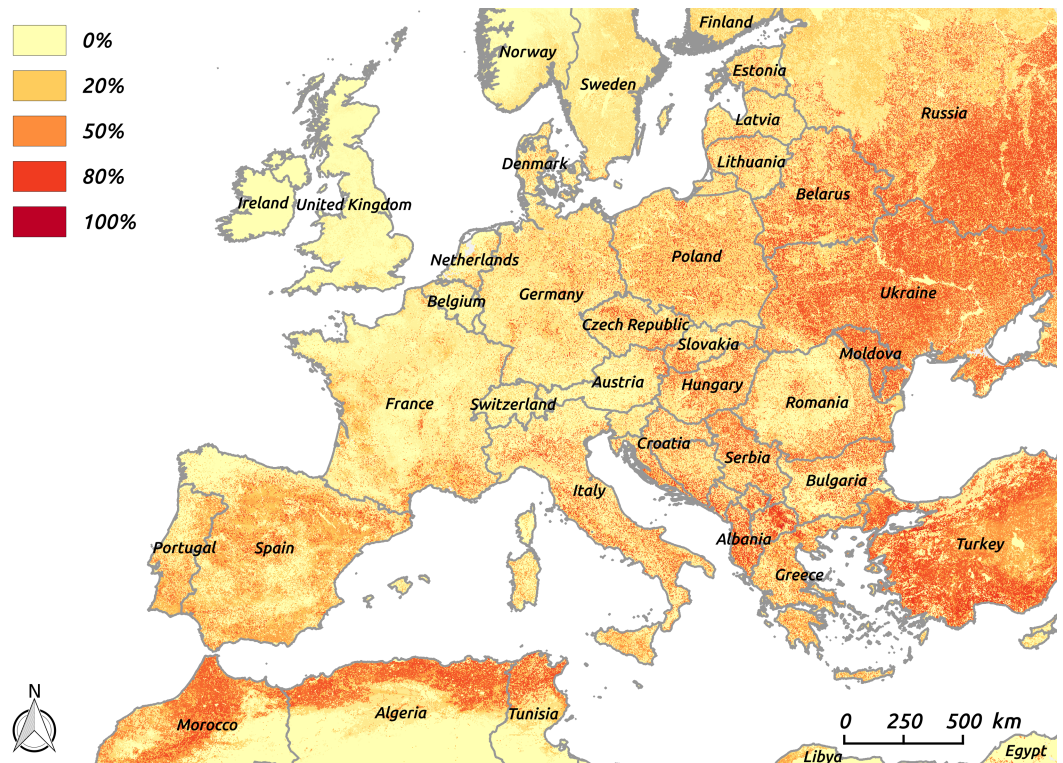


Fig 2. Map of the predicted structural bird-borne risk of WNV circulation in Europe: Geographic variations of the probability of high-risk areas (pixel-specific probability of belonging to the 10% pixels with the highest predicted structural bird-borne risk).

<https://doi.org/10.1371/journal.pone.0185962.g002>

[nile_fever/West-Nile-fever-maps/Pages/historical-data.aspx](#)). The logistic model showed a strong association between the occurrence of WND cases in a given district and the presence of high-risk pixels in that district (Table 3) (OR of 7.4 for a 5% increase of the density of pixels

Table 3. Model of occurrence of WND cases in humans in administrative districts of the European Union between 2002 and 2014, according to the predicted structural bird-borne risk of WNV circulation and to the population size.

Variable	Odds-ratio (95% confidence interval)	p-value
Intercept	0.008 (0.004–0.016)	<0.0001
Proportion of pixels classified high-risk with a probability >0.5 ^a	1.7 ^b (1.5–1.9)	<0.0001
Proportion of pixels classified high-risk with a probability >0.8 ^a	7.4 ^b (2.9–24.0)	0.0001
Population size (x10 ⁵)		
<1.3	Ref.	
1.3–2.5	1.5 (0.7–3.4)	0.34
2.5–4.8	3.5 (1.8–7.5)	0.0006
>4.8	3.1 (1.5–6.5)	0.002

^aPixels with an predicted risk above the 90th percentile of the risk distribution in >50% (resp. 80%) of bootstrapped risk maps.

^bOdds-ratios computed for an increase of 0.05 of the proportion.

<https://doi.org/10.1371/journal.pone.0185962.t003>

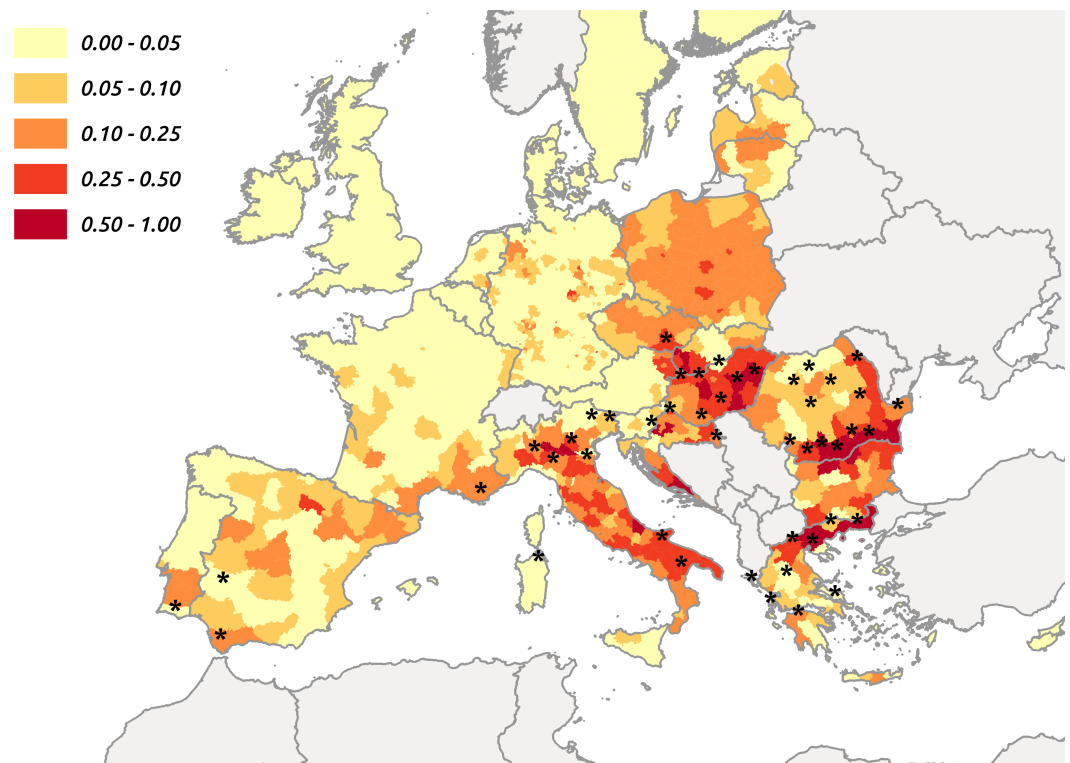


Fig 3. Map of the predicted occurrence of WND cases in administrative districts of the European Union between 2002 and 2014, according to the predicted structural bird-borne risk of WNV circulation and to the human population size (stars: Districts having reported WND cases).

<https://doi.org/10.1371/journal.pone.0185962.g003>

having >80% probability to be high-risk, OR of 1.7 for a 5% increase of the density of pixels having a >50% probability to be high-risk). The AUC was 0.84 (95% CI: 0.80–0.89), and the split-sample cross-validation resulted in a mean AUC of 0.83 (range: 0.65–0.94). The ROC curve was used to compute the probability threshold that maximized the sum of the sensitivity and of the specificity of the model prediction (also known as the Youden's J statistic): 0.05. Using this threshold, the sensitivity of the model, considered as a predictor of the occurrence of WND cases, was 86% (90 of 105 districts with reported WND cases were correctly classified, bootstrap 95% CI: 0.79–0.92). The specificity was 68% (824 of 1206 districts without reported WND cases were correctly classified, bootstrap 95% CI: 0.66–0.71).

Based on the logistic model, a choropleth map of the predicted probability of WND occurrence was generated. The bounds of the probability classes were based upon the above probability threshold, with the 1st class (having the lightest colour) corresponding to predicted probabilities below the threshold (thus classified negative according to this threshold) (Fig 3). This map confirmed that most districts having reported WND cases between 2002 and 2014 were associated with medium to high predicted probabilities.

Discussion

The risk of WNV transmission results from a combination of the structural risk, ie the usual functioning of the socio-ecological system, and the conjectural risk that corresponds to external features, such a climatic events. Published studies that aimed at producing WND risk maps for Europe [30,47] or North-America [17,48] mixed in a single model the determinants of the structural risk with those of the conjectural risk. However, the distinction between both types

of risk (and the knowledge of their respective weights in WND overall risk) is important for public health risk managers. Indeed, the mitigation procedures differ according to the risk type: preventive measures, ranging from land use planning to vaccination campaigns targeted on areas at risk, are adapted to the structural risk, whereas the focus is rather on preparedness, early warning, emergency planning and disease control for the conjectural risk. This study aimed at analysing the geographic variations of the bird-borne structural risk of WND in Europe, and analyse the association between this structural risk and the occurrence of WND cases across the European Union (EU).

The capacity of a local bird population to support WNV circulation is governed by two parameters that operate on distinct levels [18]: the intrinsic receptivity of birds to WNV, that is based on genetic determinants, whereas the exposure of birds to mosquito bites is rather based on eco-ethological determinants. A previous study, conducted in North-American zoo animals and bird populations, showed a significant contribution of intrinsic receptivity to the variations of seroprevalence among bird species [18]. In our study, a species-based model of seropositivity risk (with a single explicative variable, the species, which represented both receptivity and exposure) was compared with a traits-based model (including several variables describing eco-ethological traits that represented exposure only). According to AIC, the traits-based model better fitted the dataset than the species-based model. This corroborates results of observational studies [49] and of experimental studies conducted on European passerines that did not show marked differences between species for viraemia, viral load in organs, mortality and immune response whatever the strain involved [50–54]. Therefore, and even if 16 out of 18 studies used for this analyses were performed after 2004 when lineage 2 was firstly isolated in Europe (9), our results suggest that for European short-lived bird species, the infection risk is mainly driven by bird exposure to mosquito bites, the receptivity contribution to this risk being not a major driver. However, the lineage, 1 or 2, may influence mosquito behavior and competency, thus serological status of exposed birds. This latter component should be integrated in the future.

Seven eco-ethological traits were used to model, at the species level, how physical characteristics and behaviour modulate bird exposure to mosquito bites. The positive relationship between body mass and seropositivity, already observed in a previous study [20], was confirmed. Two eco-ethological traits representing exposure during the breeding season were significantly associated with seropositivity: the exposure of nestlings and the nest location. The low feather coverage in altricial species was associated with a higher seropositivity risk, as already observed [18]. The link between nest shape and seropositivity risk had been observed in African resident birds [19]. Here a significantly higher risk in species that build their nest on the ground was observed, which may be attributed to a better host availability for mosquitoes. The encounter-dilution hypothesis predicts that the per-capita number of mosquito bites should decrease within larger groups. Verified in North-American bird populations [55,56], this hypothesis was not verified here, neither for the nocturnal gregariousness, nor for the breeding sociality. However, it should be noted that most of the short-lived bird species of our dataset were songbirds, which defend a nesting territory during the breeding season (and thus do not show any gregariousness tendency during this period). Finally, no significant link between seropositivity risk and migratory status was observed, although it had been the case for two datasets we used [20,22]. However our analyses focused on short-lived bird species, where the proportion of birds borne during the year of sampling is high, therefore blood-sampled before their first migration to Africa. An additional possible explanation may be the inclusion of studies done during West Nile outbreaks or intense circulation periods, for example in Italy between 2006 and 2013 [57,58] when resident species may present very high prevalence of antibodies.

The traits model was used to predict seroprevalence in each of the 150 short-lived European bird species. Considering seroprevalence as a proxy for the species potential implication in WNV circulation, these predictions were then combined with maps of species distribution, to obtain a risk map at the continental level. This map combined risk level and confidence level, as it represented the geographical variations of the probability of high-risk areas across Europe, a high-risk area being defined as an area for which the risk is above the 90th percentile of the risk distribution at the continental scale. Although only based on bird data (species-specific risk and species distribution), this map highlight several areas where WNV had been shown to circulate in the recent years, such as Morocco, Tunisia, Greece, Romania, Hungary, Italy, Southern France or Spain. The logistic model satisfactorily fitted the WND case occurrence dataset and showed a good ability to predict the occurrence of WND cases in districts of the European Union, as most of the districts having reported WND cases were correctly classified by the model. There are two main limitations to our study: (i) the detection sensitivity was assumed similar in all countries of concern but human cases may have been missed in countries classified at risk by the model (ii) most of serosurveys included in the analyses were performed after WN human cases occurrence. The model also predicted a significant risk of WND cases in districts where no WND case had been reported, such as Poland. This was an expected result as the present study only investigated the reservoir host (i.e. bird-borne) component of WND structural risk. Some areas may present a high risk level for the bird-borne component if bird species assembly is favourable to WNV circulation, but a low global WND structural risk if the abundance of competent vectors is low, for example. Assessing the mosquito-borne structural risk and combine it with the bird-borne one is crucial will be crucial in the coming year to precisely identify areas at risk where vaccination and risk-based surveillance can be implemented. Some areas may also present a high structural but low conjectural risk. This may be the case in Poland, although some reports of WND cases in human in this country [59,60] suggest that WNV could have been occasionally circulating in specific areas. Furthermore, in this country, significant seroprevalence levels have recently been described in humans with meningitis and lymphocytic meningitis (14 of 42 cases), as well as in horses and wild birds [44]. Finally, as suggested by Zehender et al [61], WNV may need a few years of enzootic circulation before transmission to dead-end hosts: Poland may be in this situation. This time lag may be partially explained by the above-mentioned conjectural risk and justify a long term surveillance and awareness in risky areas.

Lastly, considering only VNT which is highly specific may partially explain why some currently affected areas were classified at low risk by the model.

To be more reliable, the present analysis need to be further completed with bird serological data collected without any human cases history the year before, weighted by a country-specific detection sensitivity and an analysis of the mosquito-borne structural risk.

Conclusions

The study reported here allowed identifying several eco-ethological traits associated with WNV seroprevalence in European short-lived bird species, and using this statistical association and the bird species geographic distribution, to derive maps for the geographic variations of the bird-borne structural risk of WNV circulation in Europe. Comparison with case incidence data in human showed a strong association between bird-borne structural risk and occurrence of WND cases. Although the bird-borne structural risk, alone, is not sufficient to predict the occurrence of WND cases, it can be expected that, in the future, the combination of this risk with the vector-borne structural risk may allow identifying areas where the risk of WND occurrence is high.

Supporting information

S1 Table. Potential risk factors for WNV seropositivity in European bird species weighing <50g and predicted seroprevalence according to the traits-based model.
(XLSX)

S2 Table. Habitat preferences of European bird species weighing <50g.
(XLSX)

S3 Table. PRISMA checklist completed for the present analysis (from [28]).
(DOC)

S4 Table. WNV seroprevalence data in European bird species weighing <50g.
(XLSX)

Acknowledgments

This study was partially funded by MOBOD project, ECDC public tender OJ/2012/02/16 – PROC/2012/015: Indicative Precursors of Mosquitoes-borne Disease Outbreaks in Europe. The authors also thank Birdlife International for having provided bird species distribution data.

Author Contributions

Conceptualization: Benoit Durand, Annelise Tran, Véronique Chevalier.

Data curation: Gilles Balança.

Formal analysis: Benoit Durand, Annelise Tran.

Funding acquisition: Annelise Tran, Véronique Chevalier.

Investigation: Gilles Balança.

Methodology: Benoit Durand, Annelise Tran, Véronique Chevalier.

Software: Benoit Durand, Annelise Tran.

Supervision: Véronique Chevalier.

Validation: Benoit Durand.

Writing – original draft: Benoit Durand.

Writing – review & editing: Annelise Tran, Gilles Balança, Véronique Chevalier.

References

1. Bunning ML, Bowen RA, Cropp B, Sullivan K, Davis B, et al. (2001) Experimental infection of horses with West Nile virus and their potential to infect mosquitoes and serve as amplifying hosts. *Ann NY Acad Sci* 951: 338–339. PMID: [11797793](https://pubmed.ncbi.nlm.nih.gov/11797793/)
2. Rossi S, Ross T, Evans J (2010) West Nile virus. *Clin Lab Med* 30: 47–65. <https://doi.org/10.1016/j.cll.2009.10.006> PMID: [20513541](https://pubmed.ncbi.nlm.nih.gov/20513541/)
3. Sambri V, Capobianchi M, Charrel R, Fyodorova M, Gaibani P, et al. (2013) West Nile virus in Europe: emergence, epidemiology, diagnosis, treatment, and prevention. *Clinical Microbiology and Infection* 19: 699–704. <https://doi.org/10.1111/1469-0691.12211> PMID: [23594175](https://pubmed.ncbi.nlm.nih.gov/23594175/)
4. Castillo-Olivares J, Wood J (2004) West Nile virus infection of horses. *Vet Res*: 467–483. <https://doi.org/10.1051/vetres:2004022> PMID: [15236677](https://pubmed.ncbi.nlm.nih.gov/15236677/)
5. Gardner I, Wong S, Ferraro G, Balasuriya U, Hullinger P, et al. (2007) Incidence and effects of West Nile virus infection in vaccinated and unvaccinated horses in California. *Vet Res* 38: 109–116. PMID: [17274156](https://pubmed.ncbi.nlm.nih.gov/17274156/)

6. Murgue B, Murri S, Triki H, Deubel V, Zeller HG (2001) West Nile in the Mediterranean basin: 1950–2000. *Ann N Y Acad Sci* 951: 117–126. PMID: [11797769](https://pubmed.ncbi.nlm.nih.gov/11797769/)
7. Calistri P, Giovannini A, Hubalek Z, Ionescu A, Monaco F, et al. (2010) Epidemiology of west nile in europe and in the mediterranean basin. *Open Virol J* 4: 29–37. <https://doi.org/10.2174/1874357901004020029> PMID: [20517490](https://pubmed.ncbi.nlm.nih.gov/20517490/)
8. Bakoni T, Hubalek Z, Rudolf I, Nowotny N (2005) Novel flavivirus or new lineage of West Nile virus, central Europe. *Emerg Inf Dis* 11: 225–231.
9. Bakoni T, Ivanics E, Erdélyi K, Ursu K, Ferenczi E, et al. (2005) Lineage 1 and 2 strains of encephalitic West Nile virus, central Europe. *Emerg Infect Dis* 12: 618–623.
10. Papa A, Politis C, Tsoukala A, Eglezou A, Bakaloudi V, et al. (2012) West Nile virus lineage 2 from blood donor, Greece. *Emerg Infect Dis* 18(4): 688–689. <https://doi.org/10.3201/eid1804.110771> PMID: [22469502](https://pubmed.ncbi.nlm.nih.gov/22469502/)
11. Savini G, Capelli G, Monaco F, Polci A, Russo F, et al. (2012) Evidence of West Nile virus lineage 2 circulation in Northern Italy. *Vet Microbiol* 158: 267–273. <https://doi.org/10.1016/j.vetmic.2012.02.018> PMID: [22406344](https://pubmed.ncbi.nlm.nih.gov/22406344/)
12. Papa A, Bakonyi T, Xanthopoulou K, Vázquez A, Tenorio A, et al. (2011) Genetic characterization of West Nile virus lineage 2, Greece, 2010. *Emerg Infect Dis* 17: 920–922. <https://doi.org/10.3201/eid1705.101759> PMID: [21529413](https://pubmed.ncbi.nlm.nih.gov/21529413/)
13. Chaintoutis S, Chaskopoulou A, Chassalevris T, Koehler P, Papanastassopoulou M, et al. (2013) West Nile virus lineage 2 strain in Greece, 2012. *Emerg Infect Dis* 19: 827–829. <https://doi.org/10.3201/eid1905.121418> PMID: [23697609](https://pubmed.ncbi.nlm.nih.gov/23697609/)
14. Becker B, Leisnham PT, LaDeau SL (2014) A tale of two city blocks: differences in immature and adult mosquito abundances between socioeconomically different urban blocks in Baltimore (Maryland, USA). *Int J Environ Res Public Health* 11: 3256–3270. <https://doi.org/10.3390/ijerph110303256> PMID: [24651396](https://pubmed.ncbi.nlm.nih.gov/24651396/)
15. Chevalier V, Tran A, Durand B (2013) Predictive Modeling of West Nile Virus Transmission Risk in the Mediterranean Basin: How Far from Landing? *International Journal of Environmental Research and Public Health* 11: 67–90. <https://doi.org/10.3390/ijerph110100067> PMID: [24362544](https://pubmed.ncbi.nlm.nih.gov/24362544/)
16. Harrigan RJ, Thomassen HA, Buermann W, Cummings RF, Kahn ME, et al. (2010) Economic conditions predict prevalence of West Nile virus. *PLoS One* 5: e15437. <https://doi.org/10.1371/journal.pone.0015437> PMID: [21103053](https://pubmed.ncbi.nlm.nih.gov/21103053/)
17. Rochlin I, Turbow D, Gomez F, Ninivaggi DV, Campbell SR (2011) Predictive Mapping of Human Risk for West Nile Virus (WNV) Based on Environmental and Socioeconomic Factors. *PLoS One* 6: e23280. <https://doi.org/10.1371/journal.pone.0023280> PMID: [21853103](https://pubmed.ncbi.nlm.nih.gov/21853103/)
18. Roche B, Morand S, Elguero E, Balenghien T, Guégan J-F, et al. (2015) Does host receptivity or host exposure drives dynamics of infectious diseases? The case of West Nile Virus in wild birds. *Infection, Genetics and Evolution* 33: 11–19. <https://doi.org/10.1016/j.meegid.2015.04.011> PMID: [25891281](https://pubmed.ncbi.nlm.nih.gov/25891281/)
19. Chevalier V, Reynaud P, Lefrançois T, Durand B, Baillon F, et al. (2009) Predicting West Nile virus seroprevalence in wild birds in Senegal. *Vector borne and zoonotic diseases (Larchmont, NY)* 9: 589–596.
20. Figuerola J, Jiménez-Clavero MA, López G, Rubio C, Soriguer R, et al. (2008) Size matters: West Nile Virus neutralizing antibodies in resident and migratory birds in Spain. *Vet Microbiol* 132: 39–46. <https://doi.org/10.1016/j.vetmic.2008.04.023> PMID: [18514437](https://pubmed.ncbi.nlm.nih.gov/18514437/)
21. Hamer GL, Walker ED, Brawn JD, Loss SR, Ruiz MO, et al. (2008) Rapid amplification of West Nile virus: the role of hatch-year birds. *Vector borne and zoonotic diseases (Larchmont, NY)* 8: 57–67.
22. López G, Jiménez-Clavero MA, Tejedor CG, Soriguer R, Figuerola J (2008) Prevalence of West Nile virus neutralizing antibodies in Spain is related to the behavior of migratory birds. *Vector Borne Zoonotic Dis* 8: 615–621. <https://doi.org/10.1089/vbz.2007.0200> PMID: [18399777](https://pubmed.ncbi.nlm.nih.gov/18399777/)
23. Huang Z, de Boer W, van Langevelde F, Olson V, Blackburn T, et al. (2013) Species' life-history traits explain interspecific variation in reservoir competence: a possible mechanism underlying the dilution effect. *Plos One* 8: e54341. <https://doi.org/10.1371/journal.pone.0054341> PMID: [23365661](https://pubmed.ncbi.nlm.nih.gov/23365661/)
24. Marra PP, Griffing S, Caffrey C, Kilpatrick M, McLean R, et al. (2004) West Nile virus and wild life. *Bio-science* 54: 393–402.
25. Balenghien T, Fouque F, Sabatier P, Bicout DJ (2006) Horse, bird and human-seeking behaviour and seasonal abundance of mosquitoes in a West Nile focus of southern France. *J Med Entomol* 43: 936–946. PMID: [17017231](https://pubmed.ncbi.nlm.nih.gov/17017231/)
26. Chevalier V, Reynaud P, Lefrançois T, Durand B, Baillon F, et al. (2009) Predicting West Nile virus seroprevalence in wild birds in Senegal. *Vector Borne Zoonotic Dis* 9: 589–596. <https://doi.org/10.1089/vbz.2008.0130> PMID: [19196131](https://pubmed.ncbi.nlm.nih.gov/19196131/)

27. Cramp S, Simmons K (1977–1994) Handbook of the birds of Europe, the Middle East and North Africa. Oxford, UK: Oxford University Press.
28. Moher D, Liberati A, Tetzlaff J, Altman D, Group P (2009) Preferred reporting items for systematic reviews and meta-analyses: the PRISMA statement. *PLoS Med* 6.
29. Agresti A (2002) *Categorical Data Analysis*, 2nd Ed. Hoboken, New Jersey, USA: Wiley. 710 p.
30. Tran A, Sudre B, Paz S, Rossi M, Desbrosse A, et al. (2014) Environmental predictors of West Nile fever risk in Europe. *Int J Health Geogr* 13: 26. <https://doi.org/10.1186/1476-072X-13-26> PMID: 24986363
31. Hars J (2001) Surveillance de l'infection de l'avifaune camarguaise par le virus West Nile. Gières, France. 7 p.
32. Jourdain E, Zeller HG, Sabatier P, Murri S, Kayser Y, et al. (2008) Prevalence of West Nile virus neutralizing antibodies in wild birds from the Camargue area, southern France. *J Wildl Dis* 44: 766–771. <https://doi.org/10.7589/0090-3558-44.3.766> PMID: 18689669
33. Jourdain E, Schuffenecker I, Korimbocus J, Reynard S, Murri S, et al. (2007) West Nile virus in wild resident birds, Southern France, 2004. *Vector Borne Zoonotic Dis* 7: 448–452. <https://doi.org/10.1089/vbz.2006.0592> PMID: 17767404
34. Balança G, Gaidet N, Savini G, Vollet B, Foucart A, et al. (2009) Low West Nile virus circulation in wild birds in an area of recurring outbreaks in Southern France. *Vector borne and zoonotic diseases (Larchmont, NY)* 9: 737–741.
35. Ferraguti M, La Puente JM-D, Soriguer R, Llorente F, Jiménez-Clavero MÁ, et al. (2016) West Nile virus-neutralizing antibodies in wild birds from southern Spain. *Epidemiology & Infection FirstView*: 1–5.
36. Linke S, Niedrig M, Kaiser A, Ellerbrok H, Müller K, et al. (2007) Serologic evidence of West Nile virus infections in wild birds captured in Germany. *The American journal of tropical medicine and hygiene* 77: 358–364. PMID: 17690413
37. Seidowski D, Ziegler U, Rönn JACv, Müller K, Hüppop K, et al. (2010) West Nile virus monitoring of migratory and resident birds in Germany. *Vector Borne Zoonotic Dis* 10: 639–647. <https://doi.org/10.1089/vbz.2009.0236> PMID: 20854016
38. Ziegler U, Jöst H, Müller K, Fischer D, Rinder M, et al. (2015) Epidemic Spread of Usutu Virus in Southwest Germany in 2011 to 2013 and Monitoring of Wild Birds for Usutu and West Nile Viruses. *Vector Borne and Zoonotic Diseases (Larchmont, NY)* 15: 481–488.
39. Lelli R, Calistri P, Bruno R, Monaco F, Savini G, et al. (2012) West Nile transmission in resident birds in Italy. *Transbound Emerg Dis* 59: 421–428. <https://doi.org/10.1111/j.1865-1682.2011.01287.x> PMID: 22212727
40. Llopis IV, Rossi L, Di Gennaro A, Mosca A, Teodori L, et al. (2015) Further circulation of West Nile and Usutu viruses in wild birds in Italy. *Infection, Genetics and Evolution* 32: 292–297. <https://doi.org/10.1016/j.meegid.2015.03.024> PMID: 25818400
41. Hubálek Z, Halouzka J, Juricová Z, Sikutová S, Rudolf I, et al. (2008) Serologic survey of birds for West Nile flavivirus in southern Moravia (Czech Republic). *Vector Borne Zoonotic Dis* 8: 659–666. <https://doi.org/10.1089/vbz.2007.0283> PMID: 18454599
42. Jourdain E, Olsen B, Lundkvist A, Hubálek Z, Sikutová S, et al. (2011) Surveillance for West Nile virus in wild birds from northern Europe. *Vector Borne Zoonotic Dis* 11: 77–79. <https://doi.org/10.1089/vbz.2009.0028> PMID: 20518642
43. Ludu Oslobanu EL, Miha-Pintilie A, Anitã D, Anita A, Lecollinet S, et al. (2014) West Nile virus reemergence in Romania: a serologic survey in host species. *Vector Borne and Zoonotic Diseases (Larchmont, NY)* 14: 330–337.
44. Niczyporuk JS, Samorek-Salamonowicz E, Lecollinet S, Pancewicz SA, Kozdruń W, et al. (2015) Occurrence of West Nile Virus Antibodies in Wild Birds, Horses, and Humans in Poland. *BioMed Research International* 2015.
45. Petrovic T, Blazquez AB, Lupulovic D, Lazic G, Escibano-Romero E, et al. (2013) Monitoring West Nile virus (WNV) infection in wild birds in Serbia during 2012: first isolation and characterisation of WNV strains from Serbia. *Eurosurveillance* 18: 1–8.
46. Figuerola J, Baouab RE, Soriguer R, Fassi-Fihri O, Llorente F, et al. (2009) West Nile Virus Antibodies in Wild Birds, Morocco, 2008. *Emerging Infectious Diseases* 15: 1651–1653. <https://doi.org/10.3201/eid1510.090340> PMID: 19861065
47. Valiakos G, Papaspyropoulos K, Giannakopoulos A, Birtsas P, Tsiodras S, et al. (2014) Use of Wild Bird Surveillance, Human Case Data and GIS Spatial Analysis for Predicting Spatial Distributions of West Nile Virus in Greece. *PLoS ONE* 9.

48. Harrigan RJ, Thomassen HA, Buermann W, Smith TB (2014) A continental risk assessment of West Nile virus under climate change. *Glob Chang Biol* 20: 2417–2425. <https://doi.org/10.1111/gcb.12534> PMID: 24574161
49. Figuerola J, Jiménez-Clavero M, López G, Rubio C, Soriguer R, et al. (2008) Size matters: West Nile Virus neutralizing antibodies in resident and migratory birds in Spain. *Vet Microbiol* 132: 39–46. <https://doi.org/10.1016/j.vetmic.2008.04.023> PMID: 18514437
50. Del Amo J, Llorente F, Figuerola J, Soriguer R, Moreno A, et al. (2014) Experimental infection of house sparrows (*Passer domesticus*) with West Nile virus isolates of Euro-Mediterranean and North American origins. *Vet Res*: 45:33. <https://doi.org/10.1186/1297-9716-45-33> PMID: 24641615
51. Del Amo J, Llorente F, Perez-Ramirez E, Soriguer R, Figuerola J, et al. (2014) Experimental infection of house sparrows (*Passer domesticus*) with West Nile virus strains of lineages 1 and 2 *Vet Microbiol* 172: 542–547. <https://doi.org/10.1016/j.vetmic.2014.06.005> PMID: 24984945
52. Pérez-Ramírez E, Llorente F, Jiménez-Clavero M (2014) Experimental Infections of Wild Birds with West Nile Virus. *Viruses* 6: 752–781. <https://doi.org/10.3390/v6020752> PMID: 24531334
53. Lim S, Brault A, van Amerongen G, Bosco-Lauth A, Romo H, et al. (2015) Susceptibility of Carrion Crows to Experimental Infection with Lineage 1 and 2 West Nile Viruses. *Emerg Infect Dis* 21: 1357–1365. <https://doi.org/10.3201/2108.140714> PMID: 26197093
54. SM L, Brault A, van Amerongen G, Sewbalaksing V, Osterhaus A, et al. (2014) Susceptibility of European jackdaws (*Corvus monedula*) to experimental infection with lineage 1 and 2 West Nile viruses *J Gen Virol* 95: 1320–1329. <https://doi.org/10.1099/vir.0.063651-0> PMID: 24671752
55. Komar N, Colborn JM, Horiuchi K, Delorey M, Biggerstaff B, et al. (2015) Reduced West Nile Virus Transmission Around Communal Roosts of Great-Tailed Grackle (*Quiscalus mexicanus*). *Ecohealth* 12: 144–151. <https://doi.org/10.1007/s10393-014-0993-0> PMID: 25480320
56. Krebs BL, Anderson TK, Goldberg TL, Hamer GL, Kitron UD, et al. (2014) Host group formation decreases exposure to vector-borne disease: a field experiment in a 'hotspot' of West Nile virus transmission. *Proc Biol Sci* 281: 20141586. <https://doi.org/10.1098/rspb.2014.1586> PMID: 25339722
57. Lelli R, Calistri P, Bruno R, Monaco F, Savini G, et al. (2012) West nile transmission in resident birds in Italy. *Trans Emerg Dis* 59: 421–428.
58. Llopis I, Rossi L, Di Gennaro A, Mosca A, Teodori L, et al. (2015) Further circulation of West Nile and Usutu viruses in wild birds in Italy. *Infection, Genetics and Evolution* 32: 292–297. <https://doi.org/10.1016/j.meegid.2015.03.024> PMID: 25818400
59. Hermanowska-Szpakowicz T, Grygorczuk S, Kondrusik M, Zajkowska J, Pancewicz S (2006) [Infections caused by West Nile virus]. *Przegl Epidemiol* 60: 93–98. PMID: 16758745
60. Moniuszko-Malinowska A, Czupryna P, Dunaj J, Zajkowska J, Siemieniako A, et al. (2016) West Nile virus and USUTU—a threat to Poland. *Przegl Epidemiol* 70: 7–10, 99–102. PMID: 27344466
61. Zehender G, Veo C, Ebranati E, Carta V, Rovida F, et al. (2017) Reconstructing the recent West Nile virus lineage 2 epidemic in Europe and Italy using discrete and continuous phylogeography. *PLoS One* 12: e0179679. <https://doi.org/10.1371/journal.pone.0179679> PMID: 28678837