



**HAL**  
open science

## **Influence of the intestinal microbiota on colonization resistance to Salmonella and the shedding pattern of naturally exposed pigs**

Héctor Argüello, Jordi Estellé, Finola C. Léonard, Fiona Crispie, Paul D. Cotter, Orla O'sullivan, Helen Lynch, Kavita Walia, Geraldine Duffy, Peadar G. Lawlor, et al.

### ► To cite this version:

Héctor Argüello, Jordi Estellé, Finola C. Léonard, Fiona Crispie, Paul D. Cotter, et al.. Influence of the intestinal microbiota on colonization resistance to Salmonella and the shedding pattern of naturally exposed pigs. *mSystems*, 2019, 4 (2), 10.1128/mSystems.00021-19 . hal-02625688

**HAL Id: hal-02625688**

**<https://hal.inrae.fr/hal-02625688v1>**

Submitted on 26 May 2020

**HAL** is a multi-disciplinary open access archive for the deposit and dissemination of scientific research documents, whether they are published or not. The documents may come from teaching and research institutions in France or abroad, or from public or private research centers.

L'archive ouverte pluridisciplinaire **HAL**, est destinée au dépôt et à la diffusion de documents scientifiques de niveau recherche, publiés ou non, émanant des établissements d'enseignement et de recherche français ou étrangers, des laboratoires publics ou privés.



Distributed under a Creative Commons Attribution 4.0 International License



# Influence of the Intestinal Microbiota on Colonization Resistance to *Salmonella* and the Shedding Pattern of Naturally Exposed Pigs

✉ Héctor Argüello,<sup>a,b</sup> Jordi Estellé,<sup>c</sup> Finola C. Leonard,<sup>d</sup> Fiona Crispie,<sup>e,f</sup> Paul D. Cotter,<sup>e,f</sup> Orla O'Sullivan,<sup>e,f</sup> Helen Lynch,<sup>a,d</sup> Kavita Walia,<sup>a,h</sup> Geraldine Duffy,<sup>a</sup> Peadar G. Lawlor,<sup>g</sup> Gillian E. Gardiner<sup>h</sup>

<sup>a</sup>Teagasc, Food Research Centre, Ashtown, Dublin, Ireland

<sup>b</sup>Grupo de Genómica y Mejora Animal, Departamento de Genética, Facultad de Veterinaria, Universidad de Córdoba, Córdoba, Spain

<sup>c</sup>GABI, INRA, AgroParisTech, Université Paris-Saclay, Jouy-en-Josas, France

<sup>d</sup>School of Veterinary Medicine, University College Dublin, Dublin, Ireland

<sup>e</sup>Teagasc, Food Research Centre, Fermoy, Cork, Ireland

<sup>f</sup>APC Microbiome Ireland, Cork, Ireland

<sup>g</sup>Teagasc, Pig Development Department, Animal and Grassland Research and Innovation Centre, Moorepark, Fermoy, Cork, Ireland

<sup>h</sup>Department of Science, Waterford Institute of Technology, Waterford, Ireland

**ABSTRACT** *Salmonella* colonization and infection in production animals such as pigs are a cause for concern from a public health perspective. Variations in susceptibility to natural infection may be influenced by the intestinal microbiota. Using 16S rRNA compositional sequencing, we characterized the fecal microbiome of 15 weaned pigs naturally infected with *Salmonella* at 18, 33, and 45 days postweaning. Dissimilarities in microbiota composition were analyzed in relation to *Salmonella* infection status (infected, not infected), serological status, and shedding pattern (non-shedders, single-point shedders, intermittent-persistent shedders). Global microbiota composition was associated with the infection outcome based on serological analysis. Greater richness within the microbiota postweaning was linked to pigs being seronegative at the end of the study at 11 weeks of age. Members of the *Clostridia*, such as *Blautia*, *Roseburia*, and *Anaerovibrio*, were more abundant and part of the core microbiome in nonshedder pigs. Cellulolytic microbiota (*Ruminococcus* and *Prevotella*) were also more abundant in noninfected pigs during the weaning and growing stages. Microbial profiling also revealed that infected pigs had a higher abundance of *Lactobacillus* and *Oscillospira*, the latter also being part of the core microbiome of intermittent-persistent shedders. These findings suggest that a lack of microbiome maturation and greater proportions of microorganisms associated with suckling increase susceptibility to infection. In addition, the persistence of *Salmonella* shedding may be associated with an enrichment of pathobionts such as *Anaerobiospirillum*. Overall, these results suggest that there may be merit in manipulating certain taxa within the porcine intestinal microbial community to increase disease resistance against *Salmonella* in pigs.


**IMPORTANCE** *Salmonella* is a global threat for public health, and pork is one of the main sources of human salmonellosis. However, the complex epidemiology of the infection limits current control strategies aimed at reducing the prevalence of this infection in pigs. The present study analyzes for the first time the impact of the gut microbiota in *Salmonella* infection in pigs and its shedding pattern in naturally infected growing pigs. Microbiome (16S rRNA amplicon) analysis reveals that maturation of the gut microbiome could be a key consideration with respect to limiting the infection and shedding of *Salmonella* in pigs. Indeed, seronegative animals had higher richness of the gut microbiota early after weaning, and uninfected pigs had

**Citation** Argüello H, Estellé J, Leonard FC, Crispie F, Cotter PD, O'Sullivan O, Lynch H, Walia K, Duffy G, Lawlor PG, Gardiner GE. 2019. Influence of the intestinal microbiota on colonization resistance to *Salmonella* and the shedding pattern of naturally exposed pigs. mSystems 4:e00021-19. <https://doi.org/10.1128/mSystems.00021-19>.

**Editor** David W. Cleary, University of Southampton

**Copyright** © 2019 Argüello et al. This is an open-access article distributed under the terms of the [Creative Commons Attribution 4.0 International license](https://creativecommons.org/licenses/by/4.0/).

Address correspondence to Héctor Argüello, [Arguello.riguez@gmail.com](mailto:Arguello.riguez@gmail.com).

 Gut microbiota composition and maturation seem to influence disease resistance in natural *Salmonella* infection in pigs. Strict anaerobes could limit the chances of the pathogen to colonize the intestine and infect the host.

**Received** 11 January 2019

**Accepted** 1 April 2019

**Published** 23 April 2019

higher abundance of strict anaerobes from the class *Clostridia*, results which demonstrate that a fast transition from the suckling microbiota to a postweaning microbiota could be crucial with respect to protecting the animals.

**KEYWORDS** microbiome, colonization resistance, metagenome, pathogen, pig

*Salmonella* species is a ubiquitous enterobacterium which colonizes the intestine of animals (1). Nontyphoidal serovars such as *Salmonella enterica* serovar Typhimurium and *Salmonella enterica* serovar Enteritidis, which are frequently present in the gastrointestinal tract of production animals, are a major source of human salmonellosis (2), and recent studies identify pork products as one of the main sources of infection (3). Pigs are a natural host for *Salmonella* (4), and infection can occur at any production stage (5). With the exception of infections caused by *Salmonella enterica* serovar Choleraesuis, the serovar which is host adapted to pigs (6), the course of clinical infection is restricted to intestinal disease and is usually subclinical (7). *Salmonella* infection in swine is characterized by an early acute phase in which the pathogen is shed in relatively high concentrations in the feces (8). This then progresses to intermittent shedding or carriage with reactivation of shedding under adverse circumstances (9).

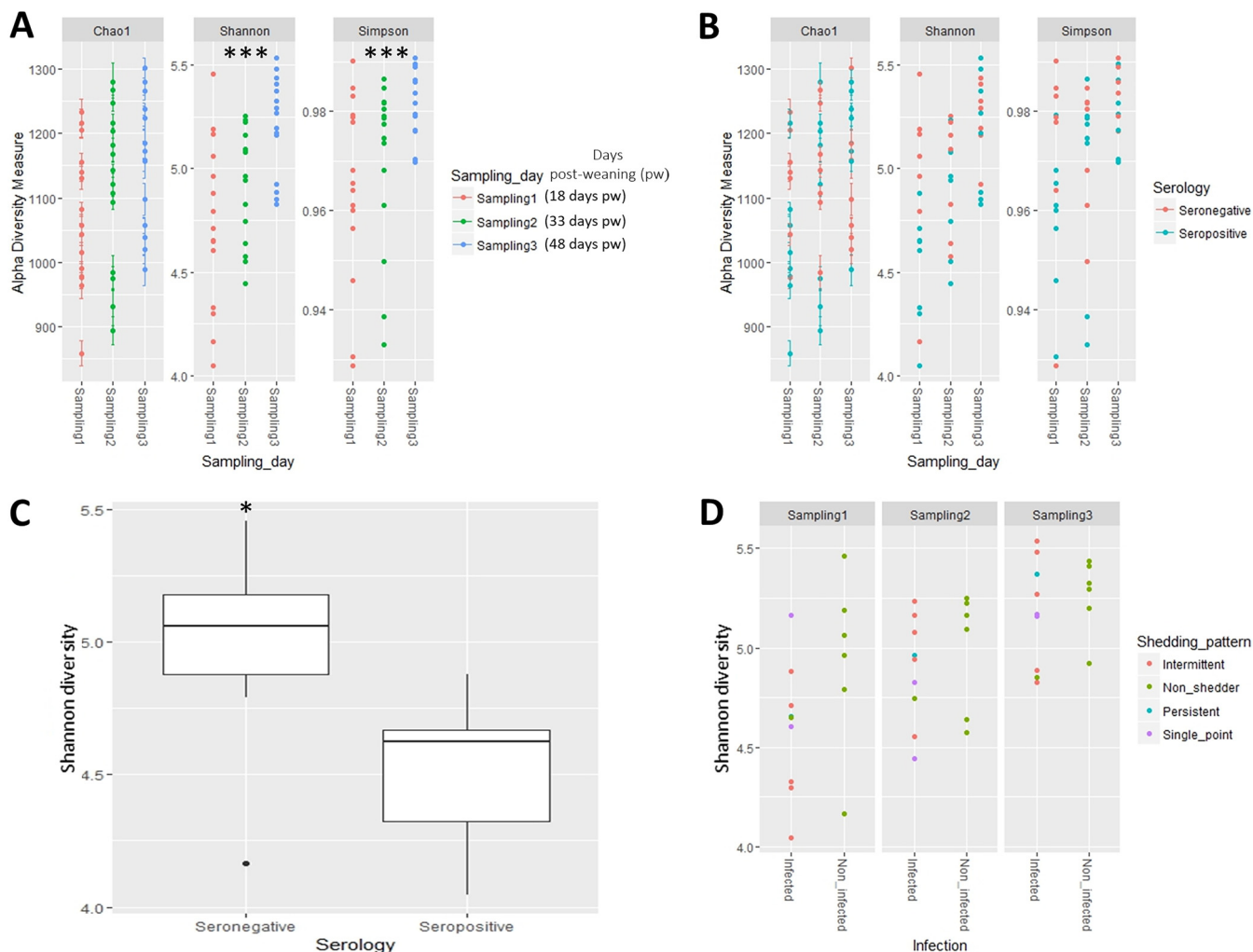
*Salmonella* epidemiological studies demonstrate that infected and noninfected pigs cohabit within the same herd (10, 11). Differences in disease outcome are also observed in animals monitored during field trials (12, 13). This phenomenon may reflect individual variability in susceptibility in pigs exposed to *Salmonella* under the same environmental conditions. Furthermore, infected animals exhibit variations in the concentration and duration of pathogen excretion in the feces (5, 8, 14). This could, at least in part, be due to colonization resistance, a concept first proposed in the 1950s (15, 16) but which may be relevant to the interpretation of recent studies investigating the influence of the microbiome on disease outcomes (17). The principle underlying colonization resistance is that normal gut symbionts can form a barrier in the gastrointestinal tract, which limits the invasion of nonnative bacteria such as pathogens (18–20).

The observed differences in gastrointestinal colonization of pigs by *Salmonella* under natural conditions, including variations in shedding pattern and resistance to colonization, could therefore be ascribed, at least partially, to the resident microbiota of the host. Recently, high-throughput sequencing has enabled metagenomic cataloging of pig intestinal samples, thereby providing insights into the microbial species present within the porcine intestinal tract (21–23). This has revolutionized our ability to study the gut microbiome, under different conditions, including deliberate *Salmonella* infection (24, 25).

In this paper, we present a novel study of the fecal microbiome of naturally infected weaned pigs from a *Salmonella*-positive herd, in which apparent differences in susceptibility to *Salmonella* infection and divergence in shedding pattern among penmates were observed. The overall aim was to identify, for the first time, particular groups of bacteria associated with the outcome of *Salmonella* infection in pigs naturally infected with the pathogen.

## RESULTS

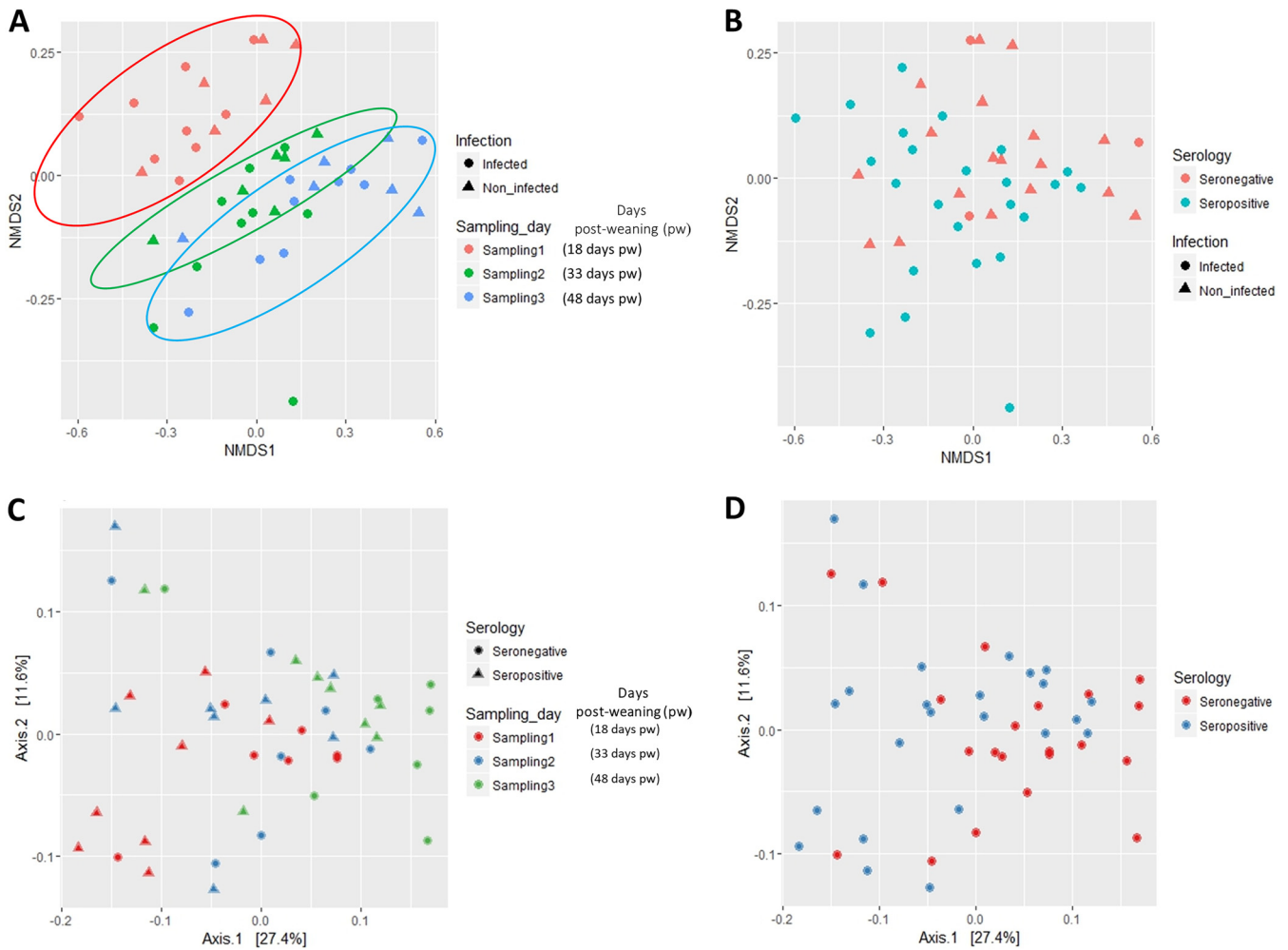
**Diversity of the microbiota in pigs categorized according to *Salmonella* infection-associated variables.** After filtering, 16S rRNA amplicon sequences were assigned to 1,493 taxa across seven taxonomic ranks. Alpha-diversity of the fecal microbiota was measured using three different estimators (Fig. 1; see also Table S1 in the supplemental material). The Shannon and Simpson indices ( $P < 0.01$ ) but not Chao1 ( $P = 0.103$ ) revealed progressive increases in diversity at each sampling time point (Fig. 1A). Analysis of variables associated with *Salmonella* (infection status, serology, shedding pattern and shedding group) and alpha-diversity measures suggested a link between serological status and Shannon index value ( $P = 0.0653$ , Fig. 1B).



**FIG 1** Alpha-diversity of the fecal microbiota of weaned pigs naturally infected with *Salmonella* or noninfected as determined by Shannon, Simpson, and Chao1 indices at the different sampling time points postweaning (A, B, and D) and according to *Salmonella* serology (seronegative or seropositive) (B). (C) Difference in Shannon index between seronegative and seropositive pigs ( $P < 0.01$ ) at fecal sampling 1 (18 days pw). (D) Shannon index of fecal samples according to *Salmonella* infection status (infected versus noninfected pigs) and shedding pattern. Significant differences are denoted as follows:  $P < 0.05$ , \*;  $P < 0.01$ , \*\*; and  $P < 0.001$ , \*\*\*.

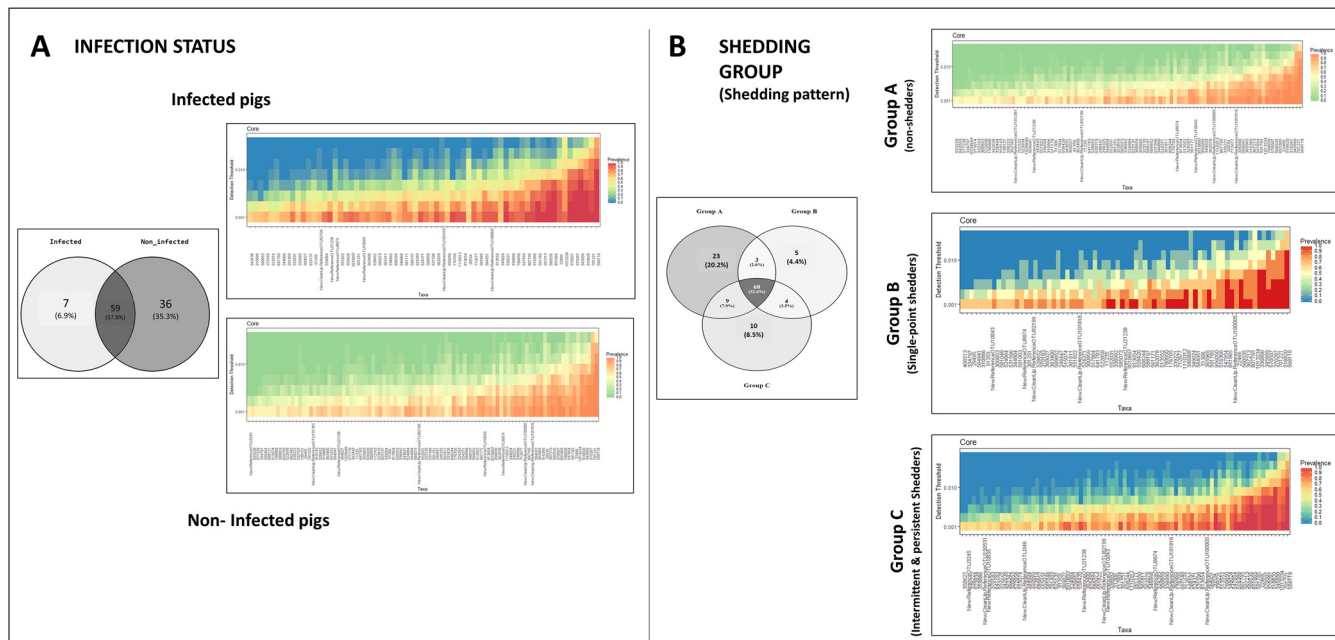
This trend was influenced by the significant differences observed at sampling 1 (18 days postweaning [pw]) when the Shannon index was clearly higher in seronegative pigs ( $P < 0.05$ , Fig. 1C), a result not observed at sampling 2 or sampling 3 (Fig. 1B; Table S1). No differences in alpha-diversity of the fecal microbiota were observed for infection status, *Salmonella* shedding pattern (Fig. 1D), or shedding group during the course of the study (Fig. S1).

**Influence of study variables on sample ordination.** Bray-Curtis (Fig. 2A and B) and weighted UNIFRAC distance analysis (Fig. 2C and D) provided consistent insights in relation to the ordination of pig fecal samples according to the different factors under study. Fitting these environmental factors (infection status, shedding group, serology, pig or sampling time point, feed type) revealed an influence of sampling time point ( $P < 0.001$ ) (linked in part to the change in diet [ $P < 0.01$ ]) and serology ( $P = 0.035$ ) variables on the Bray-Curtis ordination of samples (Table S2). The strong influence of sampling time point on the ordination of samples was corroborated by performing a multivariate ANOVA based on dissimilarities (Table S3;  $P < 0.01$ ). Neither *Salmonella* infection status nor shedding group influenced ordination of the pig fecal samples ( $P > 0.05$ ; Table S3).



**FIG 2** Ordination analysis of fecal samples obtained from weaned pigs naturally infected with *Salmonella* or noninfected. (A and B) Effect of sampling time point (A) and *Salmonella* serology (B) on Bray-Curtis distance of samples represented by nonmetric multidimensional scaling (NMDS). (C and D) The same factors analyzed by the weighted UniFrac method.

**Core microbiome analysis.** The core microbiome was established for each category within the variables “infection status” and “shedding group” (Fig. 3). Data were not split by sampling time point, in order to obtain a complete picture of the bacteria defining the core microbiome of each group, irrespective of any modifications occurring over time. *Salmonella*-infected and noninfected pigs shared more than half of the operational taxonomic units (OTUs) included in the core microbiome, while 7 and 36 OTUs were present only within the core microbiome of infected and noninfected pigs, respectively (Fig. 3A). The seven unique OTUs found in the infected pigs belonged to the genera *Lachnospira* and *Prevotella*. Operational taxonomic units from these two genera were also present in the core microbiome of noninfected pigs. In contrast, the core microbiome of noninfected pigs included OTUs from *Phascolarctobacterium*, *Roseburia*, and *Blautia*, genera which were not present within the core microbiome of infected pigs. The core microbiome was also established for pigs categorized according to *Salmonella* shedding. Most of the OTUs were shared among the three shedding categories (A, B, and C). Twenty-three OTUs were part of the core microbiome in nonshedder pigs only (group A), 5 OTUs were unique to single-point shedders (group B), and 10 OTUs were unique to intermittent/persistent shedder pigs (group C). Operational taxonomic units from *Roseburia*, *Lachnospira*, or *Phascolarctobacterium* were present only in the core microbiome of group A, while the genus *Oscillospira* was present only within the core microbiome of shedding groups B and C.



**FIG 3** Analysis of the core microbiome associated with *Salmonella* infection in weaned pigs. Core microbiome of pigs categorized according to *Salmonella* infection status (A) and *Salmonella* shedding, i.e., group A (nonshedders), group B (single-point shedders), and group C (intermittent/persistent shedders) (B). The number and percentage of OTUs overlapping between categories are also shown (in Venn diagrams).

**Differences in abundance of OTUs between pigs in different categories. (i) Differences according to infection status.** When the fecal microbiota of *Salmonella*-infected and noninfected pigs was compared, we observed differences in abundance of OTUs belonging mainly to the phylum *Firmicutes* but also to *Bacteroidetes* and *Euryarchaeota* (Table 1; Table S4). Most of these OTUs belonged to the class *Clostridia*. An OTU classified within the family *Ruminococcaceae* and another two belonging to the genera *Coprococcus* and *Lachnospira*, both from the family *Lachnospiraceae*, were relatively more abundant (with a  $>1.5$ -log fold change) in noninfected pigs.

Analysis of infection status-associated abundance differences by sampling time point revealed changes in the genera linked to *Salmonella* infection throughout the study (Table S5). At sampling 1 (weaning period), OTUs in the family *Lachnospiraceae* were associated with noninfected pigs. Similarly, at this time point, the genus *Sutterella* was also more abundant in noninfected pigs, a result which was not observed at subsequent samplings. At the end of the weaning (sampling 2) and growing (sampling 3) periods, OTUs belonging to *Ruminococcus* and *Prevotella* were more abundant in noninfected pigs. Two genera were exclusively more abundant in infected pigs, *Lactobacillus* and *Oscillospira*, both at sampling 2.

**(ii) Differences according to serological status.** Table 1 lists the OTUs associated with the factor “serological status” (seropositive or seronegative pigs). Most of the OTUs found to be more abundant in seronegative pigs belonged to the phylum *Firmicutes*, in particular to the families *Lachnospiraceae* and *Ruminococcaceae*. *Methanobrevibacter*, *Prevotella*, *Lachnospira*, *Anaerovibrio*, and *Ruminococcus* were the genera most frequently linked to the seronegative category, although the latter also had an OTU significantly more abundant in seropositive pigs. In contrast, an OTU from the genus *Lactobacillus* was significantly more abundant (1.5 log) in seropositive than seronegative pigs (Table 1; Table S4).

Analysis of the microbiome by sampling time point revealed shifts in some of the main genera found to be differentially abundant between categories within the variable “serological status.” While *Lachnospira*, *Ruminococcus*, and *Prevotella* OTUs were more abundant in seropositive pigs at the beginning of the study (sampling 1), their abundance shifted at subsequent samplings and we observed significantly higher

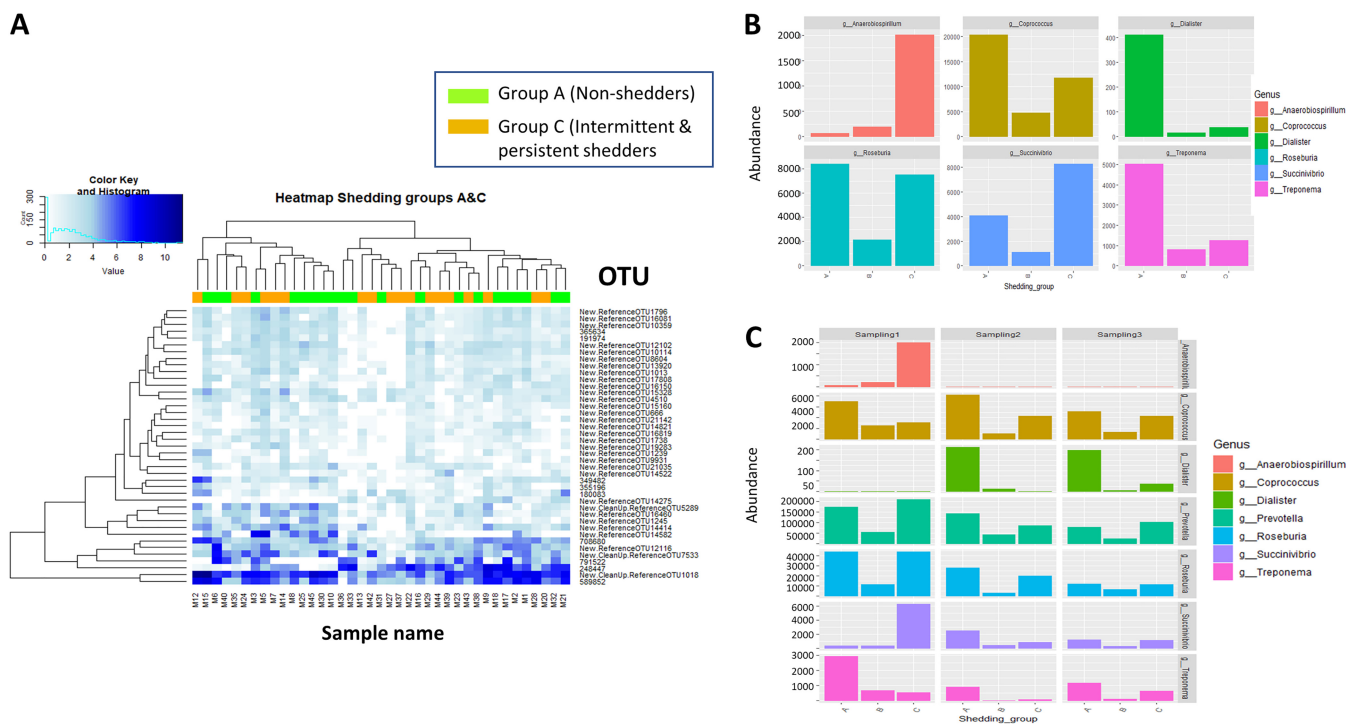
**TABLE 1** OTUs found to be differentially abundant in the feces of pigs categorized according to three different variables related to *Salmonella* infection (infection status, serology, and shedding group)<sup>a</sup>

Variable	Phylum	Class	Family	Genus	logFC	SD	FDR
Infection status	<i>Firmicutes</i>	<i>Clostridia</i>	Unclassified	Unclassified	-1.66	0.57	0.010
	<i>Firmicutes</i>	<i>Clostridia</i>	<i>Ruminococcaceae</i>	Unclassified	-1.95	0.79	0.001
	<i>Firmicutes</i>	<i>Clostridia</i>	<i>Ruminococcaceae</i>	Unclassified	2.12	0.88	0.010
	<i>Firmicutes</i>	<i>Clostridia</i>	<i>Lachnospiraceae</i>	<i>Coproccoccus</i>	1.66	0.79	0.021
	<i>Firmicutes</i>	<i>Clostridia</i>	<i>Lachnospiraceae</i>	<i>Lachnospira</i>	1.51	0.56	<0.001
	<i>Euryarchaeota</i>	<i>Methanobacteria</i>	<i>Methanobacteriaceae</i>	<i>Methanobrevibacter</i>	1.40	0.63	0.035
	<i>Bacteroidetes</i>	<i>Bacteroidia</i>	<i>Paraprevotellaceae</i>	<i>Prevotella</i>	1.34	0.69	<0.001
	<i>Firmicutes</i>	<i>Clostridia</i>	<i>Ruminococcaceae</i>	<i>Ruminococcus</i>	1.28	0.58	<0.001
Serology	<i>Firmicutes</i>	<i>Bacilli</i>	<i>Lactobacillaceae</i>	<i>Lactobacillus</i>	1.54	0.68	0.040
	<i>Firmicutes</i>	<i>Clostridia</i>	<i>Ruminococcaceae</i>	Unclassified	1.34	0.74	<0.001
	<i>Bacteroidetes</i>	<i>Bacteroidia</i>	<i>Prevotellaceae</i>	<i>Prevotella</i>	-1.20	0.54	<0.001
	<i>Firmicutes</i>	<i>Clostridia</i>	<i>Ruminococcaceae</i>	Unclassified	-1.24	0.45	0.031
	<i>Bacteroidetes</i>	<i>Bacteroidia</i>	<i>Prevotellaceae</i>	<i>Prevotella</i>	-1.25	0.68	0.039
	<i>Firmicutes</i>	<i>Clostridia</i>	<i>Ruminococcaceae</i>	<i>Ruminococcus</i>	-1.27	0.58	<0.001
	<i>Firmicutes</i>	<i>Erysipelotrichia</i>	<i>Erysipelotrichaceae</i>	p-75-a5	-1.30	0.44	0.022
	<i>Firmicutes</i>	<i>Clostridia</i>	<i>Ruminococcaceae</i>	Unclassified	-1.31	0.77	<0.001
	<i>Firmicutes</i>	<i>Clostridia</i>	<i>Clostridiaceae</i>	<i>Clostridium</i>	-1.34	0.54	0.019
	<i>Firmicutes</i>	<i>Clostridia</i>	<i>Ruminococcaceae</i>	Unclassified	-1.36	0.45	<0.001
	<i>Euryarchaeota</i>	<i>Methanobacteria</i>	<i>Methanobacteriaceae</i>	<i>Methanobrevibacter</i>	-1.36	0.66	<0.001
	<i>Bacteroidetes</i>	<i>Bacteroidia</i>	<i>Prevotellaceae</i>	<i>Prevotella</i>	-1.38	0.56	0.009
	<i>Firmicutes</i>	<i>Clostridia</i>	<i>Lachnospiraceae</i>	Unclassified	-1.39	0.57	<0.001
	<i>Firmicutes</i>	<i>Clostridia</i>	<i>Lachnospiraceae</i>	Unclassified	-1.40	0.52	0.022
	<i>Firmicutes</i>	<i>Clostridia</i>	<i>Lachnospiraceae</i>	<i>Lachnospira</i>	-1.45	0.64	0.018
	<i>Bacteroidetes</i>	<i>Bacteroidia</i>	<i>Prevotellaceae</i>	<i>Prevotella</i>	-1.50	0.50	0.008
	<i>Firmicutes</i>	<i>Clostridia</i>	<i>Lachnospiraceae</i>	Unclassified	-1.51	0.54	0.005
	<i>Firmicutes</i>	<i>Clostridia</i>	<i>Veillonellaceae</i>	<i>Anaerovibrio</i>	-1.53	0.68	<0.001
	<i>Spirochaetes</i>	<i>Spirochaetes</i>	<i>Spirochaetaceae</i>	<i>Treponema</i>	-1.55	0.79	0.002
	<i>Firmicutes</i>	<i>Clostridia</i>	<i>Lachnospiraceae</i>	<i>Lachnospira</i>	-1.60	0.54	0.003
<i>Firmicutes</i>	<i>Clostridia</i>	<i>Ruminococcaceae</i>	Unclassified	-1.64	0.76	0.031	
<i>Firmicutes</i>	<i>Clostridia</i>	<i>Ruminococcaceae</i>	Unclassified	-2.19	0.68	0.005	
Shedding group A and group C	<i>Firmicutes</i>	<i>Bacilli</i>	<i>Lactobacillaceae</i>	<i>Lactobacillus</i>	1.68	0.63	<0.001
	<i>Bacteroidetes</i>	<i>Bacteroidia</i>	<i>Prevotellaceae</i>	<i>Prevotella</i>	1.66	0.58	<0.001
	<i>Proteobacteria</i>	<i>Gammaproteobacteria</i>	<i>Succinivibrionaceae</i>	<i>Succinivibrio</i>	1.64	0.66	<0.001
	<i>Bacteroidetes</i>	<i>Bacteroidia</i>	<i>Prevotellaceae</i>	<i>Prevotella</i>	-1.22	0.57	<0.001
	<i>Firmicutes</i>	<i>Erysipelotrichia</i>	<i>Erysipelotrichaceae</i>	p-75-a5	-1.32	0.47	<0.001
	<i>Firmicutes</i>	<i>Clostridia</i>	<i>Lachnospiraceae</i>	Unclassified	-1.36	0.66	0.011
	<i>Firmicutes</i>	<i>Clostridia</i>	Unclassified	Unclassified	-1.39	0.52	<0.001
	<i>Firmicutes</i>	<i>Clostridia</i>	<i>Lachnospiraceae</i>	Unclassified	-1.40	0.57	<0.001
	<i>Firmicutes</i>	<i>Clostridia</i>	<i>Lachnospiraceae</i>	Unclassified	-1.46	0.61	<0.001
	<i>Firmicutes</i>	<i>Clostridia</i>	<i>Ruminococcaceae</i>	Unclassified	-1.54	0.80	0.003
	<i>Firmicutes</i>	<i>Clostridia</i>	Unclassified	Unclassified	-1.83	0.58	<0.001
	<i>Firmicutes</i>	<i>Clostridia</i>	<i>Ruminococcaceae</i>	Unclassified	-2.07	1.13	<0.001
	<i>Bacteroidetes</i>	<i>Bacteroidia</i>	<i>Prevotellaceae</i>	<i>Prevotella</i>	-2.49	1.22	<0.001

<sup>a</sup>Abbreviations: FC, fold change; SD, standard deviation; FDR, false-discovery rate value.

abundance in seronegative pigs at the end of the weaning (sampling 2) and growing (sampling 3) periods for both genera.

**(iii) Differences associated with *Salmonella* shedding pattern.** Analysis of differences in OTUs among the three shedding groups (group A [nonshedders], group B [single-point shedders], and group C [intermittent and persistent shedders]) revealed four differentially abundant OTUs. However, the limited number of pigs in which these OTUs were present, as well as the low abundances observed, calls into question the relevance of this finding (Table S4). We therefore further analyzed differences using the shedding group variable by limiting the analysis to differences in abundance between groups A and C. No differences in clustering by differentially abundant OTUs were observed between groups A and C (Fig. 4A). In fact, samples from both groups were equally distributed within the two major clades observed in the heat map. However, we did observe particular differences for several taxa. The genera *Lactobacillus* and *Succinivibrio* were more abundant in group C pigs (intermittent/persistent shedders) while



**FIG 4** Differences in microbial abundance in weaned pigs categorized according to *Salmonella* shedding. (A) Heat map illustrating the mean counts of differentially abundant OTUs in samples from nonshedder pigs (group A; green) and intermittent/persistent shedder pigs (group C; orange). The white color indicates low-relative-abundance taxa, while dark blue represents those at high relative abundance. The dendrogram was built using hierarchical cluster analysis with Bray-Curtis dissimilarity indices. (B) Abundance of the main genera found to be differentially abundant among shedding groups (A, nonshedders; B, single-point shedders; C, intermittent and persistent shedders). (C) Abundance of the main genera differentially abundant among shedding groups by sampling time point.

OTUs belonging to the families *Lachnospira* and *Ruminococcaceae* were more abundant in group A pigs (nonshedders). Inconclusive results were observed for *Prevotella* OTUs, which were significantly abundant in both groups (Table 1).

Analysis of data by sampling time point (Fig. 4B; Table S5) showed that *Coproccoccus* abundance was associated with nonshedder pigs (group A) across all three samplings performed (Fig. 4C). At sampling 1, the genera *Treponema* and *Fibrobacter* were also linked to nonshedders while in subsequent samplings at the end of the weaning and growing stages *Prevotella* and *Dialister* were more abundant in nonshedder pigs. *Lactobacillus* was more abundant at sampling 1 in single-point shedder pigs (group B) as were some OTUs of *Prevotella* at samplings 2 and 3 (Fig. 4C). The order YS2 (*Cyanobacteria*) and the genus *Anaerobiospirillum* were noticeably increased in the intermittent/continuous shedder group (group C). In particular, the genus *Anaerobiospirillum* was increased in abundance in group C at sampling 1 (Fig. 4B).

**Differentially abundant OTUs shared across the *Salmonella* infection-associated variables under study.** Finally, we compared the data sets for the OTUs that were differentially abundant according to the three *Salmonella* infection-associated variables studied. Five OTUs were shared among those differentially abundant according to the variables “infection” and “serological status” (Table 2). It is noteworthy that noninfected and seronegative pigs shared OTUs from the genera *Lachnospira*, *Ruminococcus*, and *Methanobrevibacter*. Similarly, the same OTUs belonging to the families *Lachnospiraceae* and *Ruminococcaceae* and the genus *Prevotella* were present in seronegative and nonshedder (group A) pigs (Table 2). On the other hand, seropositive and intermittent/persistent *Salmonella* shedder (group C) pigs shared a differentially abundant OTU from *Lactobacillus*.

**DISCUSSION**

The pig gastrointestinal tract is colonized by many different types of microorganisms which contribute to a range of host physiological processes, such as metabolism,

Downloaded from <http://msystems.asm.org/> on May 2, 2019 by guest



**TABLE 2** Differentially abundant OTUs shared among variables included in the study: infection, serology, and shedding group

OTU	Taxon	Variable <sup>a</sup>		
		Infection	Serology	Shedding group <sup>b</sup>
343831	<i>Clostridiales</i>	Noninfected	Seronegative	
523140	<i>Ruminococcus</i>	Noninfected	Seronegative	
842598	<i>Methanobrevibacter</i>	Noninfected	Seronegative	
1029949	<i>Lachnospira</i>	Noninfected	Seronegative	
New.Reference OTU2734	<i>Ruminococcaceae</i>	Infected	Seropositive	
323200	p-75-a5 <sup>c</sup>		Seronegative	Group A
339504	<i>Lachnospiraceae</i>		Seronegative	Group A
343709	<i>Ruminococcaceae</i>		Seronegative	Group A
354905	<i>Lactobacillus</i>		Seropositive	Group C
New.Reference OTU14171	<i>Prevotella</i>		Seronegative	Group A
New.CleanUp.Reference OTU164624	<i>Lachnospiraceae</i>		Seronegative	Group A
New.Reference OTU10282	<i>Lachnospiraceae</i>		Seronegative	Group A

<sup>a</sup>Category in each variable linked to the abundance of the OTU.

<sup>b</sup>Shedding group category A (nonshedders) and category C (intermittent and persistent shedders).

<sup>c</sup>Genus belonging to the family *Erysipelotrichaceae*.

integrity of the epithelial barrier, immune homeostasis, and protection against pathogens (18, 20, 26). Competition for niche and nutrients and production of bacteriocins and metabolites are considered the main mechanisms of pathogen exclusion by the resident microbiota (27). Recent studies using 16S rRNA gene sequencing have demonstrated the role of the commensal microbiota in conferring resistance to gut colonization by pathogens (19, 26). In addition, there are already findings from deliberate infection studies in pigs that suggest the influence of microbiota composition on the concentration of *Salmonella* excreted in pig feces (24). Here, for the first time, by parallel monitoring of the *Salmonella* infection and shedding status and microbiome composition of pigs naturally exposed to *Salmonella* under field conditions, we aimed to identify microbial communities associated with infection susceptibility. Disease susceptibility was defined by the combination of data, shedding of the pathogen in feces, and development of specific anti-*Salmonella* antibodies, together with three potential shedding scenarios. It was anticipated that the combination of this information and microbiome data would provide insight into the differences in infection outcome observed among individuals, thereby informing new control strategies for *Salmonella* in pigs.

**Microbiome diversity may prevent early infection of pigs postweaning.** The outcome of *Salmonella* infection in pigs is usually evaluated through direct methods which include microbiological detection of the bacterium and indirect methods which look for markers such as antibodies within the host (14). The two methods complement each other and were used in the present study to categorize pigs according to their infection outcome. Interestingly, microbiome diversity and ordination were associated with differences in the serological status of the animals. Two weeks after weaning, diversity of the fecal microbiota was higher in seronegative pigs, i.e., those without antibodies (anti-LPS IgG) to the pathogen. Two factors increase disease susceptibility postweaning: (i) the transition from milk to a solid diet, which shifts the microbial composition of the gut toward what is often considered a transitory dysbiosis (28); and (ii) the loss of maternal protective immunoglobulins provided by sows' milk (29). Therefore, taking our results and the first factor above into consideration, early establishment of a diverse and healthy microbiota may hamper the colonization success of pathogens such as *Salmonella*. The suggestion that gut health correlates with microbiome richness is in line with previous studies (30, 31). This is further supported by our study, which also showed an association between serological status and microbial ordination. From our results, we can infer that a more complex early-life microbiome may provide a more challenging environment for pathogens such as *Salmonella*, limiting their infective capacity and thereby preventing intestinal invasion and activation of the humoral immune response (32).

**Members of the class *Clostridia* may prevent colonization of the gastrointestinal tract by *Salmonella*.** Members of the class *Clostridia*, including the genera *Roseburia* and *Blautia* from the family *Lachnospiraceae* and the genera *Ruminococcus* and *Anaerovibrio*, were more abundant in *Salmonella*-negative pigs. Furthermore, *Roseburia* and *Blautia* (*Lachnospiraceae*) together with the genus *Phascolarctobacterium* were part of the core microbiome of noninfected pigs. Previous studies link these taxa to a healthy gut configuration in mammals (25, 33–35). In addition, metagenomic studies have found a negative correlation between anaerobe counts and epithelial damage in the ileal mucosa (25) and a higher abundance of *Ruminococcaceae* prior to challenge in pigs shedding low *Salmonella* concentrations (24). Another common feature of these genera is that they are preferentially or strict anaerobes and producers of short-chain fatty acids (SCFA) (33, 35–37). These two factors, together with limited oxygen and high concentrations of SCFA, such as butyrate, prevent the expansion of facultatively anaerobic *Enterobacteriaceae* such as *Salmonella* (38). The dominance of anaerobes in *Salmonella*-negative pigs is supported by the higher counts of the genus *Methanobrevibacter* in seronegative pigs. Methanogens such as *Methanobrevibacter* obtain energy from hydrogen molecules produced by strict anaerobes (39), and their abundance is linked to the presence of these anaerobes (20). In contrast, *Salmonella*-infected pigs had higher counts of *Lactobacillus* and *Oscillospira* OTUs. *Lactobacillus* and *Oscillospira* are both characteristic of the gut microbiome of nursing pigs (40, 41). We propose that their presence in high counts in feces 18 days pw (~6 weeks of age) could be indicative of immaturity of the microbiota and a lack of commensal organisms that restrict *Salmonella* colonization. Another potential explanation could be the presence of more favorable conditions for *Lactobacillus* growth in infected pigs, a result already reported by Drumo and colleagues (42). However, the mechanisms by which *Salmonella* infection might boost the growth of these taxa remain unknown.

**Changes in the competitive microbiota throughout different life stages of the pig.** Under intensive production conditions, the microbiota of the pig gastrointestinal tract evolves, shifting from *Bacteroidetes* to *Firmicutes* as the animal grows (40, 43). Putative components of the microbiota which participate in competitive exclusion of pathogens may also vary from one life stage to another. In our study, we also observed a strong effect of sampling time point on microbiome composition. Thus, sampling time point was first used as a cofactor in the statistical analyses, and then longitudinal differences in microbiota abundance were analyzed over time. Early after weaning (18 days pw; ~6 weeks of age), we observed a higher abundance of the genus *Sutterella* in noninfected pigs. *Sutterella* is a member of the *Proteobacteria* which predominantly inhabits the small intestine, at least in humans (44). Although its role in intestinal health is unclear, it is considered a commensal, is capable of adhering to the epithelium, and has a mild proinflammatory capacity. Members of this genus could therefore potentially occupy the niche of pathogenic *Proteobacteria* or positively stimulate the immune response, although more research is needed to explore this. In samplings at the end of the weaning (~8 weeks of age) and growing (~11 weeks of age) periods, OTUs of *Ruminococcus* and *Prevotella* were enriched in the noninfected pigs. Both genera are cellulolytic microbiota that increase in abundance during maturation of the gut microbiota in pigs (40, 45). These two genera were also part of the healthy gut configuration in patients who had recovered from *Vibrio cholerae* infection (46, 47), adding further support to the theory proposed in the present study that anaerobic cellulolytic SCFA-producing bacteria limit the success of *Salmonella* in colonizing the pig gastrointestinal tract.

**Persistence of *Salmonella* shedding may be influenced by the presence of synergistic bacteria.** The final goal of the present study aimed to investigate the role of the gut microbiome in determining the distinct shedding patterns observed in the animals under study. After an acute phase of infection, characterized by continuous shedding of high concentrations of *Salmonella* (48), nontyphoidal *Salmonella* infection in pigs progresses to a chronic phase, with no evident clinical signs and intermittent shedding of the pathogen in feces. This is a result of the combination of lower concentrations of *Salmonella* in feces and the limitation of microbiological methods to

detect this low burden of *Salmonella* (49). By monitoring naturally infected pigs throughout the weaning and growing periods, we observed differences in *Salmonella* shedding patterns from single-point shedder pigs to a pig which was positive at all five samplings performed. Although clustering analysis by abundance of OTUs did not split samples according to the shedding group, there were differences in particular taxa. In addition to higher abundance of *Lactobacillus*, both in single-point and in intermittent/continuous shedder groups, we observed another two taxa that were overrepresented in these groups: the genus *Anaerobiospirillum* in single-point shedder pigs and the order YS2 in intermittent/continuous shedder pigs. *Anaerobiospirillum* can be considered a pathobiont, an indigenous microbe that is able to promote disease under certain circumstances (18, 50), and its presence has been linked to diarrhea in humans (51, 52). However, little is known about YS2, an order included in the phylum *Cyanobacteria*, and the reason why it is more abundant in the gastrointestinal tract of pigs shedding *Salmonella* is unclear.

**Conclusion.** Field studies allow the investigation of diseases under natural conditions, revealing interesting information which may not come to light in challenge studies. The present field study is the first in which *Salmonella* colonization resistance was studied in pigs. Although the study includes a limited number of animals, the information that they provide is of potentially great value. Our results suggest that early establishment of a diverse core microbiome enriched in anaerobes capable of producing SCFA metabolites and subsequent enrichment of cellulolytic bacteria may impede *Salmonella* gut colonization and invasion and limit fecal shedding. On the other hand, a lack of maturation of the microbiome, with a predominance of microorganisms normally associated with suckling, may increase susceptibility to infection and persistence of pathogen shedding in the feces. Overall, these results suggest that certain taxa within the porcine intestinal microbial community could potentially be targeted in the future to manipulate the intestinal microbiome so as to increase resistance to infection with *Salmonella* in pigs.

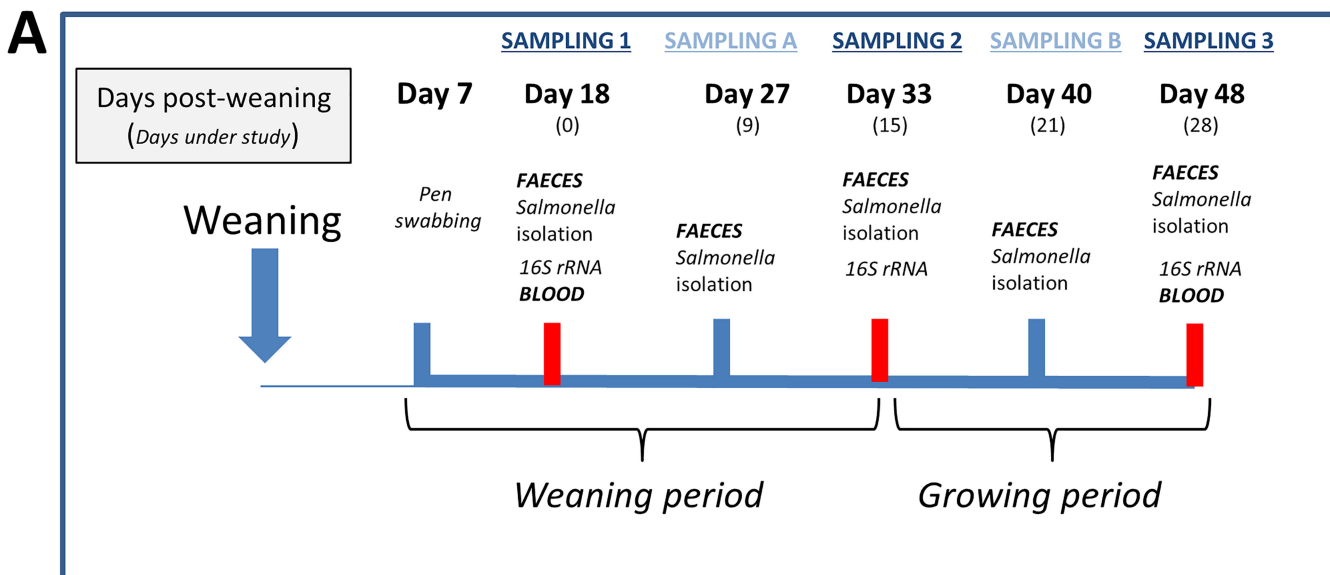
## MATERIALS AND METHODS

**Study design.** The study was conducted under license from the Department of Health and Children (number B100/2982) and received ethical approval from the University College Dublin Animal Research Ethics Committee (AREC 13-37).

The study was performed on an Irish 750-sow commercial farrow-to-finish farm with endemic *Salmonella* (*S. Typhimurium*) infection. One batch of 15 pigs was monitored from approximately 2 weeks after weaning (18 days pw or ~45 days of age) to the end of the growing phase (48 days pw or ~75 days of age) (Fig. 5). Seven days after pigs were transferred to the weaning facility, eight pens were swabbed using sponges, as previously described (53), and tested for the presence of *Salmonella*, as outlined below. Pigs from two *Salmonella*-positive pens (7 pigs from one pen and 8 from the other) were ear tagged for identification purposes and fecally sampled by digital rectal stimulation 18 days pw (sampling 1) and on four further occasions during the weaning and growing periods (Fig. 5). All fecal samples were tested for the presence of *Salmonella* as outlined below, while for microbiota analysis a subsample was flash-frozen in dry ice at sampling 1, sampling 2, and sampling 3 and stored at  $-80^{\circ}\text{C}$  until analysis. Blood samples were collected at the beginning (sampling 1) and end (sampling 3) of the study by jugular venipuncture using whole-blood plastic Vacutainers (BD Vacutainer; Becton Dickinson, Oxford, United Kingdom) for the detection of *Salmonella* antibodies, as outlined below. Throughout the course of the study, none of the study animals received antibiotics or displayed clinical signs compatible with *Salmonella* infection or any other disease of pigs. Animals received two different diets during the weaning and growing stages, respectively.

***Salmonella* detection in pen swabs and feces.** All pen swabs and fecal samples were tested for the presence of *Salmonella* according to Annex D of the ISO 6579 method, as previously described (53). Based on the results from the fecal samples, pigs were classified into four “shedding patterns” (Fig. 5): (i) nonshedders (7 pigs), defined as animals which were *Salmonella* negative at all samplings; (ii) single-point shedders (2 pigs), pigs which shed *Salmonella* at only one of the sampling time points; (iii) intermittent shedders (5 pigs), defined as pigs which shed *Salmonella* at between two and four of the sampling time points; and (iv) persistent shedders (1 pig), which were pigs that shed *Salmonella* at all samplings. These shedding patterns were grouped into three “shedding groups,” group A (nonshedders), group B (single-point shedders), and group C (intermittent and persistent shedders), for statistical analysis of microbiome differences.

***Salmonella* serological analysis and definition of infected/noninfected pigs.** Serum was obtained from the blood samples and analyzed in duplicate using an in-house indirect enzyme-linked immunosorbent assay (ELISA) as previously described (53). Briefly, the method detects immunoglobulin G against the O side chain of the lipopolysaccharide of *Salmonella* (54). Optical density percentages (OD%) were determined by relating each serum absorbance value at 650 nm to that of the positive control.



**B**

Pig	Pen	Salmonella isolation					Shedding pattern	Shedding group	Serology	Infection status
		Sampling 1	Sampling A	Sampling 2	Sampling B	Sampling 3				
Pig 1	Pen 1	Negative	Negative	Negative	Negative	Negative	Non_shedder	A	Seronegative	Non_infected
Pig 2	Pen 1	Negative	Negative	Negative	Negative	Negative	Non_shedder	A	Seronegative	Non_infected
Pig 3	Pen 1	Negative	Negative	Negative	Negative	Negative	Non_shedder	A	Seronegative	Non_infected
Pig 4	Pen 1	Negative	Positive	Negative	Negative	Negative	Single_point	B	Seronegative	Infected
Pig 5	Pen 1	Negative	Negative	Positive	Positive	Negative	Intermittent	C	Seropositive	Infected
Pig 6	Pen 1	Negative	Negative	Negative	Negative	Negative	Non_shedder	A	Seronegative	Non_infected
Pig 7	Pen 1	Positive	Negative	Positive	Negative	Positive	Intermittent	C	Seropositive	Infected
Pig 8	Pen 2	Negative	Negative	Negative	Negative	Negative	Non_shedder	A	Seronegative	Non_infected
Pig 9	Pen 2	Positive	Positive	Positive	Positive	Positive	Persistent	C	Seropositive	Infected
Pig 10	Pen 2	Negative	Negative	Negative	Negative	Negative	Non_shedder	A	Seropositive	Infected
Pig 11	Pen 2	Negative	Negative	Positive	Negative	Negative	Single_point	B	Seropositive	Infected
Pig 12	Pen 2	Positive	Negative	Positive	Negative	Negative	Intermittent	C	Seropositive	Infected
Pig 13	Pen 2	Negative	Positive	Positive	Negative	Negative	Intermittent	C	Seropositive	Infected
Pig 14	Pen 2	Positive	Negative	Positive	Negative	Negative	Intermittent	C	Seropositive	Infected
Pig 15	Pen 2	Negative	Negative	Negative	Negative	Negative	Non_shedder	A	Seronegative	Non_infected

**FIG 5** Study design. (A) Samples collected from weaned pigs naturally infected with *Salmonella* or noninfected during a field study conducted on a commercial pig farm. (B) *Salmonella* status of pigs included in the study. *Salmonella* isolation results from fecal samples (ISO 6579/2007) and serology results from anti-*Salmonella* IgG detection (ELISA) in serum of the monitored pigs. Categorization into groups by “shedding pattern”: (i) nonshedders (*Salmonella* negative at all samplings), (ii) single-point shedders (*Salmonella* positive once), (iii) intermittent shedders (*Salmonella* positive between two and four times), and (iv) persistent shedders (*Salmonella* positive at all samplings). These shedding patterns were grouped into three “shedding groups”: group A (nonshedders), group B (single-point shedders), and group C (intermittent and persistent shedders). Serology cutoff was set at 40% of ELISA optical density. Finally, pigs were categorized by “infection status,” with noninfected pigs referring to those that were nonshedders as well as seronegative and infected referring to the other combinations.

According to the ELISA results, pigs were defined as seropositive (8 pigs) when the ELISA OD value was  $\geq 10\%$  and seronegative (7 pigs) when the OD value was  $< 10\%$  (Fig. 5).

By combining the *Salmonella* shedding and serological data, pigs were defined by a new variable referred to as “infection status”: “noninfected” pigs (6 pigs) were defined as those which were bacteriologically and serologically negative on all occasions, while “infected” (9 pigs) comprised all other pigs which were *Salmonella* positive in the feces, seropositive, or both.

**16S rRNA amplicon sequencing of fecal microbiota.** Total DNA was extracted from all fecal samples (~200 mg) using the QIAamp DNA stool minikit (Qiagen, Crawley, United Kingdom) according to the manufacturer’s instructions apart from adding a bead-beating step after sample addition to the InhibitEX buffer and increasing the lysis temperature to 95°C to increase the DNA yield (23). All samples were prepared for MiSeq compositional sequencing using the specifications outlined by Illumina (Illumina Inc., Cambridge, United Kingdom). The V3-V4 region of the 16S rRNA gene was amplified, and Illumina index primers was

Downloaded from <http://msystems.asm.org/> on May 2, 2019 by guest

attached in two separate PCR (55). All PCR conditions and cleanup procedures using AMPure XP (Labplan, Kildare, Ireland) were as outlined by Illumina. Quantified samples were then sequenced using an Illumina MiSeq system at the Teagasc Sequencing Centre (Fermoy, Ireland).

**Bioinformatic processing and analysis.** Raw sequence reads generated by MiSeq were processed using version 1.9.1 of the Quantitative Insights Into Microbial Ecology (QIIME) pipeline (56) by using the subsampled open-reference OTU calling approach (57). Demultiplexing and trimming of MiSeq reads were performed using the default QIIME parameters (58). After trimming, the reads were merged into a single FASTA file and clustered into OTUs against the Greengenes database (59) (release 2013-08; gg\_13\_8\_otus) by using the parallel *uclust\_ref* method. Reads that failed this step were clustered into *de novo* OTUs using the *uclust* method (60). The filtering of chimeric OTUs was performed using Chimeraslayer (61) against the Greengenes reference alignment. After removing singleton and doubleton OTUs, only those OTUs representing  $>0.005\%$  of the total filtered were retained as suggested by Bokulich et al. (58). For analysis at the genus level, OTUs were collapsed into genus taxonomic level using the *tax\_glom* function in Phyloseq (62).

**Statistical analysis.** Statistical analyses were performed in R v3.4.2. Microbiota and study variables (shedding pattern, shedding group, serology, infection status, pen, and sampling time point) were included in the estimation of alpha-diversity richness (Shannon, Simpson, and Chao1 indices) by the Nlme, Vegan, and Phyloseq R packages (62, 63). For richness values, assumption of normality was checked using the Shapiro-Wilk test, and potential differences in richness of factors included in the study were estimated by repeated-measures analysis of variance (ANOVA), using either sampling time point or pig as a cofactor and a Tukey multiple-comparison test. Dissimilarities in beta-diversity between pairs of samples were estimated with the Bray-Curtis dissimilarity index (64) and weighted UniFrac index (65) and analyzed with nonlinear multidimensional scaling (NMDS) in Vegan. The Vegan *envfit* function, which fits environmental vectors or factors onto an ordination, was used to evaluate if the factors sampling day and infection status were associated with the NMDS ordinations; the significance of the fitted factors was estimated using 999 permutations. Core microbiome was established as those OTUs present in  $\geq 50\%$  of the samples and presenting a mean relative abundance of  $>1\%$  within the corresponding groups, using the *core* function in the R package Microbiome (66). Differences in taxon abundance were analyzed after OTU count normalization by calculating the scaling factors equal to the sum of counts in the metagenomeSeq R package (67). The zero-inflated, log-normal distribution (*fitFeatureModel* function) and the zero-inflated Gaussian distribution mixture-model (*fitZig* function) were used to estimate differences in variables under study, using sampling time point and pig factors as covariates and with a false-discovery rate (FDR) threshold of 0.05.

**Accession number(s).** The full data sets have been submitted under BioProject accession no. PRJNA521510.

## SUPPLEMENTAL MATERIAL

Supplemental material for this article may be found at <https://doi.org/10.1128/mSystems.00021-19>.

**FIG S1**, TIF file, 1.1 MB.

**TABLE S1**, XLSX file, 0.02 MB.

**TABLE S2**, XLSX file, 0.01 MB.

**TABLE S3**, XLSX file, 0.01 MB.

**TABLE S4**, XLSX file, 0.02 MB.

**TABLE S5**, XLSX file, 0.03 MB.

## ACKNOWLEDGMENTS

This study was funded by the Food Institutional Research Measure (FIRM) administered by the Department of Agriculture Food and the Marine (DAFM). H.A. is a postdoctoral researcher supported by the Juan de la Cierva Postdoctoral Trainee Program of the Spanish Ministry of Economy and Competitiveness (IJCI-2016-30795). H.A. was funded by the PiGutNet COST action (FA1401) for a Short-Term Scientific Mission at INRA's GABI laboratory (Jouy-en-Josas, France).

We gratefully acknowledge the Central Veterinary Research Laboratory (CVRL) Backweston for their expert help with the serological analyses.

H.A. participated in the study design, sample collection and processing, data analysis, and manuscript writing. F.C.L. participated in study design and manuscript correction. J.E. participated in data analysis and manuscript revision. P.D.C. and F.C. participated in microbiome sequencing and manuscript revision. O.O. performed part of the data analysis and manuscript revision. H.L. and K.W. participated in sample collection and processing. G.D. and P.G.L. participated in the study design and manuscript correction. G.E.G. participated in the study design, data analysis, and manuscript writing.

## REFERENCES

- Grimont PAD, Bouvet P. 2000. Taxonomy of the genus *Salmonella*, p 1–18. In Wray C, Wray A (ed), *Salmonella in domestic animals*. CABI Publishing, New York, NY.
- European Food Safety Authority and European Centre for Disease Prevention and Control. 2016. The European Union summary report on trends and sources of zoonoses, zoonotic agents and food-borne outbreaks in 2015. EFSA J 14:4634. <https://doi.org/10.2903/j.efsa.2016.4634>.
- Pires SM, Vieira AR, Hald T, Cole D. 2014. Source attribution of human salmonellosis: an overview of methods and estimates. *Foodborne Pathog Dis* 11:667–676. <https://doi.org/10.1089/fpd.2014.1744>.
- Argüello H, Carvajal A, Costillas S, Rubio P. 2013. Effect of the addition of organic acids in drinking water or feed during part of the finishing period on the prevalence of salmonella in finishing pigs. *Foodborne Pathog Dis* 10:842–849. <https://doi.org/10.1089/fpd.2013.1497>.
- Krunker S, Alban L, Boes J, Dahl J. 2003. Longitudinal study of *Salmonella enterica* serotype Typhimurium infection in three Danish farrow-to-finish swine herds. *J Clin Microbiol* 41:2282–2288. <https://doi.org/10.1128/JCM.41.6.2282-2288.2003>.
- Pedersen K, Sørensen G, Löfström C, Leekitcharoenphon P, Nielsen B, Wingstrand A, Aarestrup FM, Hendriksen RS, Baggesen DL. 2015. Reappearance of *Salmonella* serovar Choleraesuis var. Kunzendorf in Danish pig herds. *Vet Microbiol* 176:282–291. <https://doi.org/10.1016/j.vetmic.2015.01.004>.
- Boyen F, Haesebrouck F, Maes D, Van Immerseel F, Ducatelle R, Pasmans F. 2008. Non-typhoidal *Salmonella* infections in pigs: a closer look at epidemiology, pathogenesis and control. *Vet Microbiol* 130:1–19. <https://doi.org/10.1016/j.vetmic.2007.12.017>.
- Lynch H, Argüello H, Walia K, Lawlor PG, Duffy G, Gardiner GE, Leonard FC. 2017. Evaluation of an alternative experimental infection method, which closely mimics the natural route of transmission of monophasic *Salmonella* Typhimurium in pigs. *Foodborne Pathog Dis* 14:23–28. <https://doi.org/10.1089/fpd.2016.2193>.
- Beloeil PA, Chauvin C, Proux K, Rose N, Queguiner S, Eveno E, Houdayer C, Rose V, Fravallo P, Madec F. 2003. Longitudinal serological responses to *Salmonella enterica* of growing pigs in a subclinically infected herd. *Prev Vet Med* 60:207–226. [https://doi.org/10.1016/S0167-5877\(03\)00126-0](https://doi.org/10.1016/S0167-5877(03)00126-0).
- Argüello H, Sørensen G, Carvajal A, Baggesen DL, Rubio P, Pedersen K. 2013. Prevalence, serotypes and resistance patterns of *Salmonella* in Danish pig production. *Res Vet Sci* 95:334–342. <https://doi.org/10.1016/j.rvsc.2013.04.001>.
- García-Feliz C, Collazos JA, Carvajal A, Vidal AB, Aladueña A, Ramiro R, de la Fuente M, Echeita MA, Rubio P. 2007. *Salmonella enterica* infections in Spanish swine fattening units. *Zoonoses Public Health* 54:294–300. <https://doi.org/10.1111/j.1863-2378.2007.01065.x>.
- Walia K, Argüello H, Lynch H, Leonard FC, Grant J, Yearsley D, Kelly S, Duffy G, Gardiner GE, Lawlor PG. 2016. Effect of feeding sodium butyrate in the late finishing period on *Salmonella* carriage, seroprevalence, and growth of finishing pigs. *Prev Vet Med* 131:79–86. <https://doi.org/10.1016/j.prevetmed.2016.07.009>.
- De Ridder L, Maes D, Dewulf J, Pasmans F, Boyen F, Haesebrouck F, Méroc E, Roels S, Leyman B, Butaye P, Van der Stede Y. 2013. Effect of a DIVA vaccine with and without in-feed use of coated calcium-butyrate on transmission of *Salmonella* Typhimurium in pigs. *BMC Vet Res* 9:243. <https://doi.org/10.1186/1746-6148-9-243>.
- Argüello H, Carvajal A, Naharro G, Rubio P. 2013. Evaluation of protection conferred by a *Salmonella* Typhimurium inactivated vaccine in *Salmonella*-infected finishing pig farms. *Comp Immunol Microbiol Infect Dis* 36:489–498. <https://doi.org/10.1016/j.cimid.2013.05.002>.
- Bohnhoff M, Drake BL, Miller CP. 1954. Effect of streptomycin on susceptibility of intestinal tract to experimental *Salmonella* infection. *Proc Soc Exp Biol Med* 86:132–137. <https://doi.org/10.3181/00379727-86-21030>.
- Freter R. 1955. The fatal enteric cholera infection in the guinea pig, achieved by inhibition of normal enteric flora. *J Infect Dis* 97:57–65. <https://doi.org/10.1093/infdis/97.1.57>.
- Kim YG, Sakamoto K, Seo SU, Pickard JM, Gilliland MG, Pudlo NA, Hoostal M, Li X, Wang TD, Feehley T, Stefka AT, Schmidt TM, Martens EC, Fukuda S, Inohara N, Nagler CR, Núñez G. 2017. Neonatal acquisition of *Clostridia* species protects against colonization by bacterial pathogens. *Science* 356:315–319. <https://doi.org/10.1126/science.aag2029>.
- Pickard JM, Zeng MY, Caruso R, Núñez G. 2017. Gut microbiota: role in pathogen colonization, immune responses, and inflammatory disease. *Immunol Rev* 279:70–89. <https://doi.org/10.1111/immr.12567>.
- Becattini S, Littmann ER, Carter RA, Kim SG, Morjaria SM, Ling L, Gyaltsen Y, Fontana E, Taur Y, Leiner IM, Pamer EG. 2017. Commensal microbes provide first line defense against *Listeria monocytogenes* infection. *J Exp Med* 214:1973. <https://doi.org/10.1084/jem.20170495>.
- Kamada N, Chen GY, Inohara N, Núñez G. 2013. Control of pathogens and pathobionts by the gut microbiota. *Nat Immunol* 14:685–690. <https://doi.org/10.1038/ni.2608>.
- Xiao L, Estellé J, Kiilerich P, Ramayo-Caldas Y, Xia Z, Feng Q, Liang S, Pedersen AØ, Kjeldsen NJ, Liu C, Maguin E, Doré J, Pons N, Le Chatelier E, Prifti E, Li J, Jia H, Liu X, Xu X, Ehrlich SD, Madsen L, Kristiansen K, Rogel-Gaillard C, Wang J. 2016. A reference gene catalogue of the pig gut microbiome. *Nat Microbiol* 1:16161. <https://doi.org/10.1038/nmicrobiol.2016.161>.
- Kim HB, Isaacson RE. 2015. The pig gut microbial diversity: understanding the pig gut microbial ecology through the next generation high throughput sequencing. *Vet Microbiol* 177:242–251. <https://doi.org/10.1016/j.vetmic.2015.03.014>.
- McCormack UM, Curião T, Buzoianu SG, Prieto ML, Ryan T, Varley P, Crispie F, Magowan E, Metzler-Zebeli B, Berry D, O'Sullivan O, Cotter PD, Gardiner GE, Lawlor PG. 2017. Exploring a possible link between the intestinal microbiota and feed efficiency in pigs. *Appl Environ Microbiol* 83:e00380-17. <https://doi.org/10.1128/AEM.00380-17>.
- Bearson SM, Allen HK, Bearson BL, Looft T, Brunelle BW, Kich JD, Tuggle CK, Bayles DO, Alt D, Levine UY, Stanton TB. 2013. Profiling the gastrointestinal microbiota in response to *Salmonella*: low versus high *Salmonella* shedding in the natural porcine host. *Infect Genet Evol* 16:330–340. <https://doi.org/10.1016/j.meegid.2013.03.022>.
- Argüello H, Estellé J, Zaldívar-López S, Jiménez-Marín Á, Carvajal A, López-Bascón MA, Crispie F, O'Sullivan O, Cotter PD, Priego-Capote F, Morera L, Garrido JJ. 2018. Early *Salmonella* Typhimurium infection in pigs disrupts microbiome composition and functionality principally at the ileum mucosa. *Sci Rep* 8:7788. <https://doi.org/10.1038/s41598-018-26083-3>.
- Burrough ER, Arruda BL, Plummer PJ. 2017. Comparison of the luminal and mucosa-associated microbiota in the colon of pigs with and without swine dysentery. *Front Vet Sci* 4:139. <https://doi.org/10.3389/fvets.2017.00139>.
- Kim HB, Isaacson RE. 2017. *Salmonella* in swine: microbiota interactions. *Annu Rev Anim Biosci* 5:43–63. <https://doi.org/10.1146/annurev-animal-022516-022834>.
- Gresse R, Chaucheyras-Durand F, Fleury MA, Van de Wiele T, Forano E, Blanquet-Diot S. 2017. Gut microbiota dysbiosis in postweaning piglets: understanding the keys to health. *Trends Microbiol* 25:851–8573. <https://doi.org/10.1016/j.tim.2017.05.004>.
- Levast B, Berri M, Wilson HL, Meurens F, Salmon H. 2014. Development of gut immunoglobulin A production in piglet in response to innate and environmental factors. *Dev Comp Immunol* 44:235–244. <https://doi.org/10.1016/j.dci.2013.12.012>.
- Theriot CM, Koenigsnecht MJ, Carlson PE, Hatton GE, Nelson AM, Li B, Huffnagle GB, Li JZ, Young VB. 2014. Antibiotic-induced shifts in the mouse gut microbiome and metabolome increase susceptibility to *Clostridium difficile* infection. *Nat Commun* 5:3114. <https://doi.org/10.1038/ncomms4114>.
- Singh P, Teal TK, Marsh TL, Tiedje JM, Mosci R, Jernigan K, Zell A, Newton DW, Salimnia H, Lephart P, Sundin D, Khalife W, Britton RA, Rudrik JT, Manning SD. 2015. Intestinal microbial communities associated with acute enteric infections and disease recovery. *Microbiome* 3:45. <https://doi.org/10.1186/s40168-015-0109-2>.
- Collado-Romero M, Aguilar C, Arce C, Lucena C, Codrea MC, Morera L, Bendixen E, Moreno Á, Garrido JJ. 2015. Quantitative proteomics and bioinformatic analysis provide new insight into the dynamic response of porcine intestine to *Salmonella* Typhimurium. *Front Cell Infect Microbiol* 5:64. <https://doi.org/10.3389/fcimb.2015.00064>.
- Kampmann C, Dicksved J, Engstrand L, Rautelin H. 2016. Composition of human faecal microbiota in resistance to *Campylobacter* infection. *Clin Microbiol Infect* 22:61.e1–61.e8. <https://doi.org/10.1016/j.cmi.2015.09.004>.
- Milani C, Ticinesi A, Gerritsen J, Nounvenne A, Lugli GA, Mancabelli L,

- Turroni F, Duranti S, Mangifesta M, Viappiani A, Ferrario C, Maggio M, Lauretani F, De Vos W, van Sinderen D, Meschi T, Ventura M. 2016. Gut microbiota composition and Clostridium difficile infection in hospitalized elderly individuals: a metagenomic study. *Sci Rep* 6:25945. <https://doi.org/10.1038/srep25945>.
35. Levine UY, Bearson SM, Stanton TB. 2012. Mitsuokella jalaludinii inhibits growth of Salmonella enterica serovar Typhimurium. *Vet Microbiol* 159: 115–122. <https://doi.org/10.1016/j.vetmic.2012.03.027>.
36. Zhang Q, Xiao X, Li M, Yu M, Ping F, Zheng J, Wang T, Wang X. 2017. Vildagliptin increases butyrate-producing bacteria in the gut of diabetic rats. *PLoS One* 12:e0184735. <https://doi.org/10.1371/journal.pone.0184735>.
37. Zhao J, Nian L, Kwok LY, Sun T, Zhao J. 2017. Reduction in fecal microbiota diversity and short-chain fatty acid producers in methicillin-resistant Staphylococcus aureus infected individuals as revealed by PacBio single molecule, real-time sequencing technology. *Eur J Clin Microbiol Infect Dis* 36:1463–1472. <https://doi.org/10.1007/s10096-017-2955-2>.
38. Rivera-Chávez F, Zhang LF, Faber F, Lopez CA, Byndloss MX, Olsan EE, Xu G, Velazquez EM, Lebrilla CB, Winter SE, Bäuml AJ. 2016. Depletion of butyrate-producing Clostridia from the gut microbiota drives an aerobic luminal expansion of Salmonella. *Cell Host Microbe* 19:443–454. <https://doi.org/10.1016/j.chom.2016.03.004>.
39. Dridi B, Raoult D, Drancourt M. 2011. Archaea as emerging organisms in complex human microbiomes. *Anaerobe* 17:56–63. <https://doi.org/10.1016/j.janaerobe.2011.03.001>.
40. Mach N, Berri M, Estellé J, Levenez F, Lemonnier G, Denis C, Leplat JJ, Chevalerey C, Billon Y, Doré J, Rogel-Gaillard C, Lepage P. 2015. Early-life establishment of the swine gut microbiome and impact on host phenotypes. *Environ Microbiol Rep* 7:554–569. <https://doi.org/10.1111/1758-2229.12285>.
41. De Rodas B, Youmans BP, Danzeisen JL, Tran H, Johnson TJ. 2018. Microbiome profiling of commercial pigs from farrow to finish. *J Anim Sci* 96:1778–1794. <https://doi.org/10.1093/jas/sky109>.
42. Drumo R, Pesciaroli M, Ruggeri J, Tarantino M, Chirullo B, Pistoia C, Petrucci P, Martinelli N, Moscati L, Manuali E, Pavone S, Picciolini M, Ammendola S, Gabai G, Battistoni A, Pezzotti G, Alborali GL, Napolioni V, Pasquali P, Magistrali CF. 2015. Salmonella enterica serovar Typhimurium exploits inflammation to modify swine intestinal microbiota. *Front Cell Infect Microbiol* 5:106. <https://doi.org/10.3389/fcimb.2015.00106>.
43. Zhao W, Wang Y, Liu S, Huang J, Zhai Z, Zhai Z, He C, Ding J, Wang J, Wang H, Fan W, Zhao J, Meng H. 2015. The dynamic distribution of porcine microbiota across different ages and gastrointestinal tract segments. *PLoS One* 10:e0117441. <https://doi.org/10.1371/journal.pone.0117441>.
44. Hiiippala K, Kainulainen V, Kalliomäki M, Arkkila P, Satokari R. 2016. Mucosal prevalence and interactions with the epithelium indicate commensalism of Sutterella spp. *Front Microbiol* 7:1706. <https://doi.org/10.3389/fmicb.2016.01706>.
45. Kim J, Nguyen SG, Guevarra RB, Lee I, Unno T. 2015. Analysis of swine fecal microbiota at various growth stages. *Arch Microbiol* 197:753–759. <https://doi.org/10.1007/s00203-015-1108-1>.
46. Monira S, Nakamura S, Gotoh K, Izutsu K, Watanabe H, Alam NH, Nakaya T, Horii T, Ali SI, Iida T, Alam M. 2013. Metagenomic profile of gut microbiota in children during cholera and recovery. *Gut Pathog* 5:1. <https://doi.org/10.1186/1757-4749-5-1>.
47. Hsiao A, Ahmed AM, Subramanian S, Griffin NW, Drewry LL, Petri WA, Haque R, Ahmed T, Gordon JL. 2014. Members of the human gut microbiota involved in recovery from Vibrio cholerae infection. *Nature* 515:423–426. <https://doi.org/10.1038/nature13738>.
48. Lynch H, Leonard FC, Walia K, Lawlor PG, Duffy G, Fanning S, Markey BK, Brady C, Gardiner GE, Argüello H. 2017. Investigation of in-feed organic acids as a low cost strategy to combat Salmonella in grower pigs. *Prev Vet Med* 139:50–57. <https://doi.org/10.1016/j.prevetmed.2017.02.008>.
49. Hurd HS, Gailley JK, McKean JD, Rostagno MH. 2001. Rapid infection in market-weight swine following exposure to a Salmonella typhimurium-contaminated environment. *Am J Vet Res* 62:1194–1197. <https://doi.org/10.2460/ajvr.2001.62.1194>.
50. Pienaar C, Kruger AJ, Venter EC, Pitout JD. 2003. Anaerobiospirillum succiniciproducens bacteraemia. *J Clin Pathol* 56:316–318. <https://doi.org/10.1136/jcp.56.4.316>.
51. Fadzilah MN, Faizatul LJ, Hasibah MS, Sam IC, Bador MK, Gan GG, Abubakar S. 2009. Anaerobiospirillum succiniciproducens bacteraemia in a patient with acute lymphoblastic leukaemia. *J Med Microbiol* 58: 142–143. <https://doi.org/10.1099/jmm.0.004622-0>.
52. Kuir DG, Maloney S. 2017. Anaerobiospirillum succiniciproducens bacteraemia in the era of MALDI-TOF mass spectrometry. *Pathology* 49: 654–656. <https://doi.org/10.1016/j.jpathol.2017.05.011>.
53. Walia K, Argüello H, Lynch H, Leonard FC, Grant J, Yearsley D, Kelly S, Duffy G, Gardiner GE, Lawlor PG. 2017. Effect of strategic administration of an encapsulated blend of formic acid, citric acid, and essential oils on Salmonella carriage, seroprevalence, and growth of finishing pigs. *Prev Vet Med* 137:28–35. <https://doi.org/10.1016/j.prevetmed.2016.12.007>.
54. Nielsen B, Baggesen D, Bager F, Haugegaard J, Lind P. 1995. The serological response to Salmonella serovars typhimurium and infantis in experimentally infected pigs. The time course followed with an indirect anti-LPS ELISA and bacteriological examinations. *Vet Microbiol* 47: 205–218. [https://doi.org/10.1016/0378-1135\(95\)00113-1](https://doi.org/10.1016/0378-1135(95)00113-1).
55. Klindworth A, Pruesse E, Schweer T, Peplies J, Quast C, Horn M, Glöckner FO. 2013. Evaluation of general 16S ribosomal RNA gene PCR primers for classical and next-generation sequencing-based diversity studies. *Nucleic Acids Res* 41:e1. <https://doi.org/10.1093/nar/gks808>.
56. Caporaso J, Kuczynski J, Stombaugh J, Bittinger K, Bushman F, Costello E, Lerer N, Peña AG, Goodrich JK, Gordon JI, Huttley GA, Kelley ST, Knights D, Koenig JE, Ley RE, Lozupone CA, McDonald D, Muegge BD, Pirrung M, Reeder J, Sevinsky JR, Turnbaugh PJ, Walters WA, Widmann J, Yatsunencko T, Zaneveld J, Knight R. 2010. QIIME allows analysis of high-throughput community sequencing data. *Nat Methods* 7:335–336. <https://doi.org/10.1038/nmeth.f303>.
57. Rideout JR, He Y, Navas-Molina JA, Walters WA, Ursell LK, Gibbons JM, Chase J, McDonald D, Gonzalez A, Robbins-Pianka A, Clemente JC, Gilbert JA, Huse SM, Zhou HW, Knight R, Caporaso JG. 2014. Subsampled open-reference clustering creates consistent, comprehensive OTU definitions and scales to billions of sequences. *Peer J* 2:e545. <https://doi.org/10.7717/peerj.545>.
58. Bokulich NA, Subramanian S, Faith JJ, Gevers D, Gordon JI, Knight R, Mills DA, Caporaso JG. 2013. Quality-filtering vastly improves diversity estimates from Illumina amplicon sequencing. *Nat Methods* 10:57–59. <https://doi.org/10.1038/nmeth.2276>.
59. DeSantis TZ, Hugenholtz P, Larsen N, Rojas M, Brodie EL, Keller K, Huber T, Dalevi D, Hu P, Andersen GL. 2006. Greengenes, a chimera-checked 16S rRNA gene database and workbench compatible with ARB. *Appl Environ Microbiol* 72:5069–5072. <https://doi.org/10.1128/AEM.03006-05>.
60. Edgar RC. 2010. Search and clustering orders of magnitude faster than BLAST. *Bioinformatics* 26:2460–2461. <https://doi.org/10.1093/bioinformatics/btq461>.
61. Haas BJ, Gevers D, Earl AM, Feldgarden M, Ward DV, Giannoukos G, Ciulla D, Tabbaa D, Highlander SK, Sodergren E, Methé B, DeSantis TZ, Human Microbiome Consortium, Petrosino JF, Knight R, Birren BW. 2011. Chimeric 16S rRNA sequence formation and detection in Sanger and 454-pyrosequenced PCR amplicons. *Genome Res* 21:494–504. <https://doi.org/10.1101/gr.112730.110>.
62. McMurdie PJ, Holmes S. 2013. phyloseq: an R package for reproducible interactive analysis and graphics of microbiome census data. *PLoS One* 8:e61217. <https://doi.org/10.1371/journal.pone.0061217>.
63. Oksanen J, Blanchet G, Kindt R, Legendre P, Minchin P, O'Hara RB, Gavin L, Simpson GL, Solymos P, Stevens MHH, Szoecs E, Wagner H. 2009. Vegan: community ecology package. R package version 2.0-9.
64. Bray RJ, Curtis JT. 1957. An ordination of upland forest communities of southern Wisconsin. *Ecol Monogr* 27:325–349. <https://doi.org/10.2307/1942268>.
65. Lozupone CA, Hamady M, Kelley ST, Knight R. 2007. Quantitative and qualitative beta diversity measures lead to different insights into factors that structure microbial communities. *Appl Environ Microbiol* 73: 1576–1585. <https://doi.org/10.1128/AEM.01996-06>.
66. Lahti L, Shetty S. 2017. Tools for microbiome analysis in R. Version 1.5.28. <http://microbiome.github.com/microbiome>.
67. Paulson JN, Stine OC, Bravo HC, Pop M. 2013. Differential abundance analysis for microbial marker-gene surveys. *Nat Methods* 10:1200–1202. <https://doi.org/10.1038/nmeth.2658>.