



HAL
open science

Adult neurogenesis in sheep: Characterization and contribution to reproduction and behavior

Frédéric Lévy, Martine Batailler, Maryse Meurisse, Martine Migaud

► **To cite this version:**

Frédéric Lévy, Martine Batailler, Maryse Meurisse, Martine Migaud. Adult neurogenesis in sheep: Characterization and contribution to reproduction and behavior. *Frontiers in Neuroscience*, 2017, 11, pp.1-15. 10.3389/fnins.2017.00570 . hal-02628123

HAL Id: hal-02628123

<https://hal.inrae.fr/hal-02628123>

Submitted on 26 May 2020

HAL is a multi-disciplinary open access archive for the deposit and dissemination of scientific research documents, whether they are published or not. The documents may come from teaching and research institutions in France or abroad, or from public or private research centers.

L'archive ouverte pluridisciplinaire **HAL**, est destinée au dépôt et à la diffusion de documents scientifiques de niveau recherche, publiés ou non, émanant des établissements d'enseignement et de recherche français ou étrangers, des laboratoires publics ou privés.



Distributed under a Creative Commons Attribution - ShareAlike 4.0 International License



Adult Neurogenesis in Sheep: Characterization and Contribution to Reproduction and Behavior

Frederic Lévy*, Martine Batailler, Maryse Meurisse and Martine Migaud

Institut National de la Recherche Agronomique, UMR85, Centre National de la Recherche Scientifique, UMR7247, Université F. Rabalais, IFCE, Physiologie de la Reproduction et des Comportements, Nouzilly, France

Sheep have many advantages to study neurogenesis in comparison to the well-known rodent models. Their development and life expectancy are relatively long and they possess a gyrencephalic brain. Sheep are also seasonal breeders, a characteristic that allows studying the involvement of hypothalamic neurogenesis in the control of seasonal reproduction. Sheep are also able to individually recognize their conspecifics and develop selective and lasting bonds. Adult olfactory neurogenesis could be adapted to social behavior by supporting recognition of conspecifics. The present review reveals the distinctive features of the hippocampal, olfactory, and hypothalamic neurogenesis in sheep. In particular, the organization of the subventricular zone and the dynamic of neuronal maturation differs from that of rodents. In addition, we show that various physiological conditions, such as seasonal reproduction, gestation, and lactation differently modulate these three neurogenic niches. Last, we discuss recent evidence indicating that hypothalamic neurogenesis acts as an important regulator of the seasonal control of reproduction and that olfactory neurogenesis could be involved in odor processing in the context of maternal behavior.

Keywords: hypothalamus, hippocampus, olfactory bulb, photoperiod, maternal behavior, neuroblasts, seasonal reproduction, neurogenic niche

OPEN ACCESS

Edited by:

Irmgard Amrein,
University of Zurich, Switzerland

Reviewed by:

Anne Didier,
Claude Bernard University Lyon 1,
France
Krishna Vadodaria,
Salk Institute for Biological Studies,
United States

*Correspondence:

Frederic Lévy
frederic.levy@inra.fr

Specialty section:

This article was submitted to
Neurogenesis,
a section of the journal
Frontiers in Neuroscience

Received: 16 June 2017

Accepted: 28 September 2017

Published: 23 October 2017

Citation:

Lévy F, Batailler M, Meurisse M and
Migaud M (2017) Adult Neurogenesis
in Sheep: Characterization and
Contribution to Reproduction and
Behavior. *Front. Neurosci.* 11:570.
doi: 10.3389/fnins.2017.00570

INTRODUCTION

A majority of invertebrates and vertebrates species show a continuous addition of neurons throughout life. Neurogenesis occurring in species with long development and life span (e.g., carnivores, ungulates, and primate) is far much less documented than in rodents. However, the timing of generation, migration, and differentiation of new neurons have been reported to differ according to lifespan and life history (Amrein et al., 2011). These differences are not surprising when one considers that neurogenesis is part of the plastic changes allowing adaptation to functional demands that differ according to species.

Sheep are an interesting species for studying neurogenesis for several reasons. Its development (puberty at 6–8 months) and its life expectancy (10–12 years) are rather long in comparison to rodents and differences in life span could influence the rate of neuronal maturation in adulthood. Sheep possess a gyrencephalic brain, a cortex with a laterally expanded folded pial surface similar to non-human and human primates, and adult neurogenesis could differ from a lissencephalic brain with a smooth cortical surface, like rodents, since major developmental differences exists between both types of brain (Fietz et al., 2010). It is hypothesized that brain expansion accompanied

by gyrification and topographical complexity leads to dramatic differences in the migration and maturation rates of newborn neurons (Paredes et al., 2016). Sheep is also a seasonal breeder, unlike the majority of laboratory rodents, and these seasonal changes are under the control of the hypothalamic region. Because this region has also the capacity to produce adult-born neurons (see below), the ovine model allows one to study the role of such plasticity in the regulation of seasonal reproduction. Species such as sheep that live under different complexity of social organization and in a more natural environment than laboratory rodents would extend our knowledge of the functional significance of adult neurogenesis in social contexts (Gheusi et al., 2009). Sheep are highly social and develop selective and stable bonds. In this species, odors play a key role in individual recognition of conspecifics either in male-female or mother-young interactions (Keller and Lévy, 2012). Thus, sheep offer a unique opportunity to understand how adult olfactory neurogenesis, one of the numerous forms of brain plasticity constitutes an adaptive response to social behavior by favoring recognition of conspecifics.

The aim of this review is to point out recent findings on the characterization of olfactory, hippocampal, and hypothalamic neurogenic niches in sheep (Figure 1A). In addition, their regulation by physiological status and social interactions are considered and the possible functional relevance of these different forms of adult neurogenesis is discussed in the context of seasonal regulation and social interactions.

CHARACTERIZATION OF OLFACTORY, HIPPOCAMPAL, AND HYPOTHALAMIC NEUROGENIC NICHES

Olfactory Neurogenesis

SVZ Organization and Migration Pathway

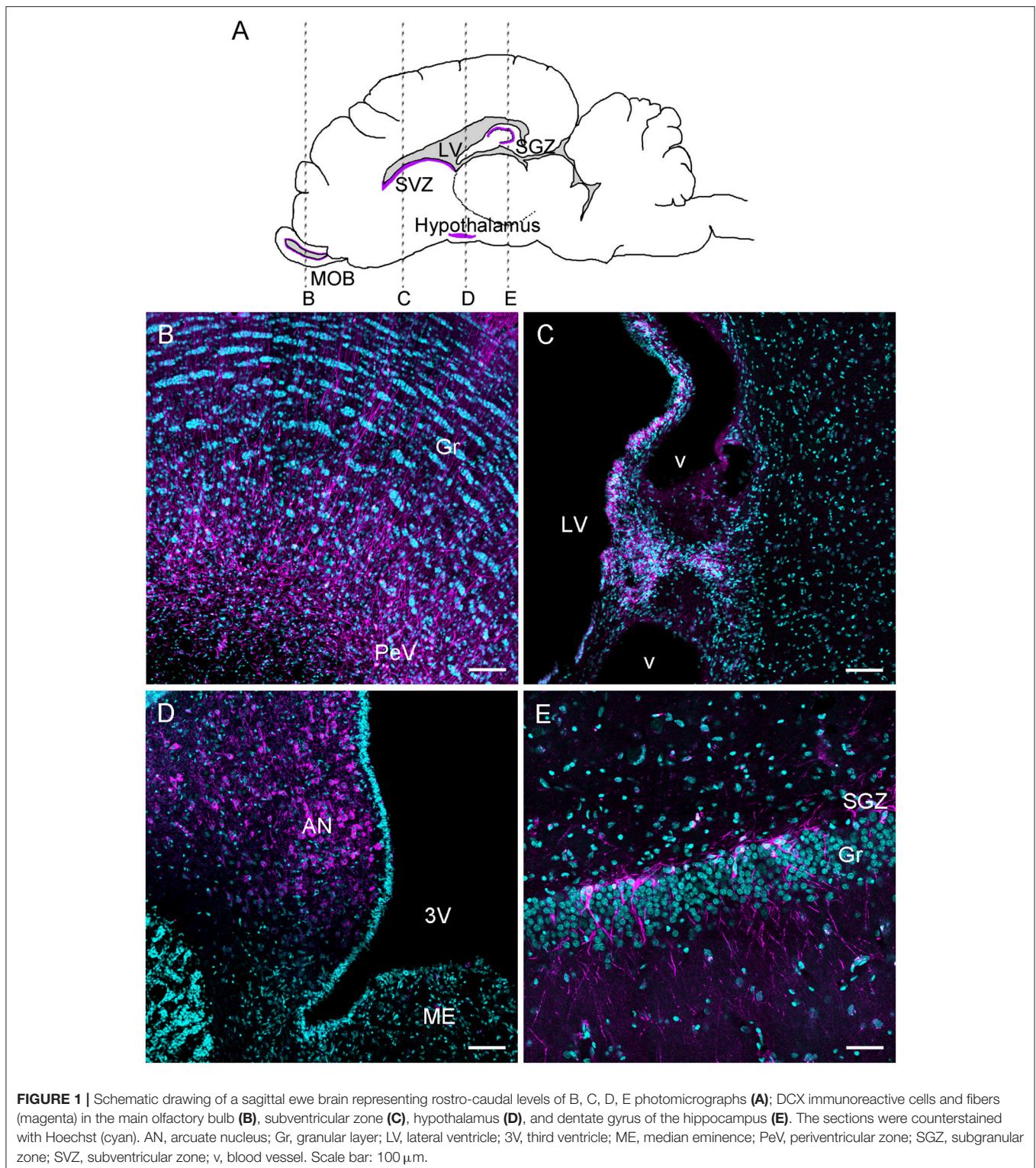
As in rodents and primates, adult neural stem cells in sheep are located in the subventricular zone (SVZ) and produce neurogenic and gliogenic precursors (Figure 1C). These precursors migrate toward the main olfactory bulb (MOB) forming a pathway called the rostral migratory stream (RMS); for an extended review, see Doetsch et al., 1999a; Gil-Perotin et al., 2009; Brus et al., 2010; Sawamoto et al., 2011). In a study establishing the origin of adult-born neurons in the MOB, an AAV5-eGFP was injected in the SVZ (Brus et al., 2013). AAV5-eGFP labeled cells were observed in the MOB when the injection site was located in the SVZ, but not when located posterior at the level of the corpus callosum. This result indicates a similar distribution of neural stem cells between ovine and rodents SVZ (Luskin, 1993). In addition, the SVZ is expanded to the sheep MOB because their lateral ventricle extends up to the MOB, as is the case in rabbits (Luzzati et al., 2003; Brus et al., 2013). Like rabbits and primates, chains of neuroblasts in the anterior SVZ are immersed within an astrocytic meshwork. The presence of a hypocellular layer separating chains of neuroblasts from the ependymal layer resembles the SVZ composition in bovines (Rodriguez-Perez et al., 2003) and primates (Quinones-Hinojosa et al., 2006; Gil-Perotin et al., 2009). Thus, in sheep, from the SVZ up to the MOB

a migratory pathway is found along the lateral ventricle from the SVZ to the ventricle of MOB (Brus et al., 2013).

Cells, labeled by injection of an AAV5-eGFP into the SVZ, and found in the periventricular layer of the MOB show an undifferentiated phenotype at 2 months of age. They are mostly Sox2+, a marker of proliferating precursor cells and of glial-like cells; they show a simple dendritic arborization. Likewise, 1-day-old bromodeoxyuridine+ (BrdU) cells are observed in the periventricular layer of the MOB and are co-labeled with Ki-67, an endogenous mitotic marker (Kee et al., 2002). These cells are co-labeled with GFAP, which is a marker for astrocytes and neural stem/progenitor cells (Chojnacki et al., 2009), further suggesting the existence of a neurogenic niche within the MOB (Doetsch et al., 1999b; Brus et al., 2010). Similarly, neuroblasts, evidenced by DCX labeling, are also found in the periventricular layer with a round or fusiform shape and short processes, whereas deeper in the granular cell layer of the MOB, neuroblasts are more mature and display multiple processes (Figure 1B). Thus, a continuous zone of neural progenitors exists along from the lateral ventricle to the rostral extreme of the MOB ventricle. This characteristic was confirmed by Low et al.'s (2013) study and resembles the human RMS (Curtis et al., 2007). Thus, in sheep, the periventricular layer of the MOB could also constitute a pool of cells that could supply new neurons that migrate to the granular layer. However, cell proliferation rate in the MOB is much lower than in the SVZ. Interestingly, the MOB of mice (Gritti et al., 2002), macaque monkeys (Kornack and Rakic, 2001), and humans (Pagano et al., 2000; Bedard and Parent, 2004) also contains neural progenitors. The ability of stem cells isolated from the MOB to produce neurospheres is weaker than those from the SVZ, though (Gritti et al., 2002). Hence, in some species, the periventricular layer of the MOB could be neurogenic but its activity may be relatively minor.

Dynamics of Maturation

Although adult neurogenesis is well-conserved in mammals, some features differ between species. In addition to the organization of the SVZ, the dynamic of neurogenesis appear to vary between short-lived and long-lived mammals (Amrein, 2015). For instance, in the MOB of rodents, the far majority of newborn neurons are observed within 15 days after BrdU injections and are fully mature 15 days later (Petreanu and Alvarez-Buylla, 2002; Winner et al., 2002; Brown et al., 2003; Imayoshi et al., 2008). By contrast, in the macaque, only a very small population of BrdU positive cells is found even at 3 months post-injection in the granular cell layer (Kornack and Rakic, 2001). In female sheep, using BrdU injections in combination with maturation markers, noticeable differences in the dynamic of neuronal maturation are found in comparison to rodent adult neurogenesis (Brus et al., 2013; Figure 2). For instance, in sheep no variation of BrdU cell density is observed across time except a decrease at 8-month post-injection, suggesting a slow process of apoptosis over this period, in contrast to rodents in which half of the newborn cells die within the first month after birth (Alvarez-Buylla et al., 2001; Lemasson et al., 2005). Very few neuroblasts (BrdU+/DCX+ cells) are found at 1 month after BrdU injections in the granular layer of the



sheep MOB. This population peaks at 3-month and decreases slowly up to 8 months after BrdU injections. No mature neurons (BrdU+/NeuN+ cells) are observed before 3 months post-injections and the highest proportion of new neurons is found 8

months after BrdU injections. These new cells could be activated because they express immediate early genes indicating their functional integration into the granular cell layer. In addition, a substantial proportion of immature cells, evidenced by Sox2

labeling, is found both in the periventricular and granular layers, again supporting the hypothesis of the presence of stem cells that could differentiate according to physiological challenges.

Hippocampal Neurogenesis

Evidence for a Neurogenic Niche

It is currently clear that the dentate gyrus (DG) of the hippocampus is a neurogenic niche for the majority of the mammalian species investigated so far (for a brief overview, see Vadodaria and Gage, 2014; for an extended review, see Amrein, 2015). In Merino ewes, Hawken et al. (2009) reported for the first time the existence of cell proliferation in the DG using BrdU immunohistochemistry. A more detailed study shows in Ile-de-France ewes that 1 day-old BrdU + cells are indeed present in the DG and that their density is highest in the subgranular layer (SGZ) than in the granular layer (Figure 1E; Brus et al., 2010). A confocal analysis reveals that almost the entire population of these cells also expresses Ki-67, and half of the BrdU+ cell population co-localizes with GFAP. In addition, a significant population of Sox2+ cells is present in the subgranular layer of the DG. Unexpectedly, a high percentage of these cells are found for up to 8 months (Brus et al., 2010), suggesting that a pool of presumed stem cells continues to generate new neurons over a long time, as has been reported in mice (Ninkovic and Gotz, 2007). Cell proliferation in the DG was also evidenced in another domestic breed of sheep, Romney/Suffolk ewes (Low et al., 2013), and in a feral breed of sheep (Hazlerigg et al., 2013), the Soay sheep. However, in the Soay breed, a very low rate (2 cells/mm² in Brus et al.'s (2010) study) albeit despite the dose of BrdU injected in that study being three-fold. Whether this difference is due to disparities in methodology or to breed differences remain unknown.

Dynamics of Maturation

Similar to what is observed in the MOB, neuronal maturation in the DG takes a longer time in sheep than in rodents. In the DG of rodents, the majority of neuroblasts is observed at 7 days after BrdU injection and this population declines by 30 days (Brown et al., 2003; Kempermann et al., 2003; Steiner et al., 2004; McDonald and Wojtowicz, 2005; Suh et al., 2007). In sheep, the proportion of neuroblasts peaks at 1 month and stays fairly stable up to 8 months post-injection (Figure 2; Brus et al., 2013). A similar timing of maturation of the neuroblasts is reported in the macaque monkey (Kohler et al., 2011). As for the mature neurons, in rodents they are detected at 10 days post-injection and their number increases up to 1-month survival time (Cameron et al., 1993; Brown et al., 2003; Steiner et al., 2004; McDonald and Wojtowicz, 2005; Suh et al., 2007). In sheep, a low proportion of DCX+ or NeuN+ cells is observed at 1 month BrdU post-injection and the proportion of mature neurons peaks at 4 months survival time (Brus et al., 2013). Similarly, in primates, very few mature neurons are found at 1-month survival time and are the most numerous at 6-months survival time (Kohler et al., 2011; Sawamoto et al., 2011).

In both the MOB and the DG, <50% of the BrdU+ cells turn into mature neurons even at 8 months post-injections, in contrast

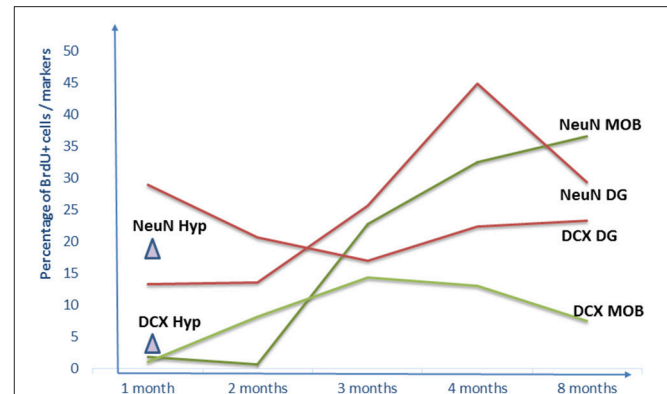


FIGURE 2 | Dynamics of adult neurogenesis in the main olfactory bulb, the dentate gyrus of the hippocampus and the hypothalamus. Results are expressed as percentage of BrdU+ cells per markers for NeuN+ and DCX+ at 1, 2, 3, 4, and 8-month BrdU post-injections. No data are available after 1-month post-injection for the hypothalamus. DG, dentate gyrus; Hyp, hypothalamus; MOB, main olfactory bulb.

to mice and rats in which the majority of BrdU+ cells become neurons (Petreanu and Alvarez-Buylla, 2002; Winner et al., 2002; Suh et al., 2007; Imayoshi et al., 2008). In summary, olfactory and hippocampal neurogenesis in sheep are characterized by delayed neuronal maturation, similar to primates (Kohler et al., 2011). However, one cannot exclude that the production of neurons by progenitor cells is reduced in comparison to rodents, as was shown in primates (Tonchev and Yamashima, 2006). Although the mechanisms underlying differences in the length of maturation between species remain to be determined, a parsimonious hypothesis could be related to differences in their life spans.

Hypothalamic Neurogenesis

Historic

Fifteen years ago, the neurogenic activity observed in the mammalian brain was thought to be limited to the two defined regions described above. However, numerous pieces of evidence indicate that other brain regions retained the capacity to produce adult-born neurons under physiological conditions. Indeed the existence of new neurons has been revealed in the hypothalamus (Kokoeva et al., 2005; Xu et al., 2005; Migaud et al., 2010), the amygdala (Bernier et al., 2002; Luzzati et al., 2003; Akbari et al., 2007; Ahmed et al., 2008), the striatum (Bedard et al., 2002, 2006; Emsley et al., 2005), the piriform and prefrontal cortices (Bernier et al., 2002; Pekcec et al., 2006; Staffend et al., 2014) as well as more caudally in the substantia nigra (Zhao and Janson Lang, 2009) and the midbrain raphe nuclei (Holschbach and Lonstein, 2017).

Among these structures the hypothalamus has received much attention (reviews: Migaud et al., 2010; Lee and Blackshaw, 2012, although its level of constitutive neurogenesis seems lower than in the two well-documented neurogenic regions (Lee and Blackshaw, 2012). Constitutive hypothalamic neurogenesis has been proven to occur in many species of mammals, including mice (Kokoeva et al., 2005, 2007; Lee et al., 2012; Li et al.,

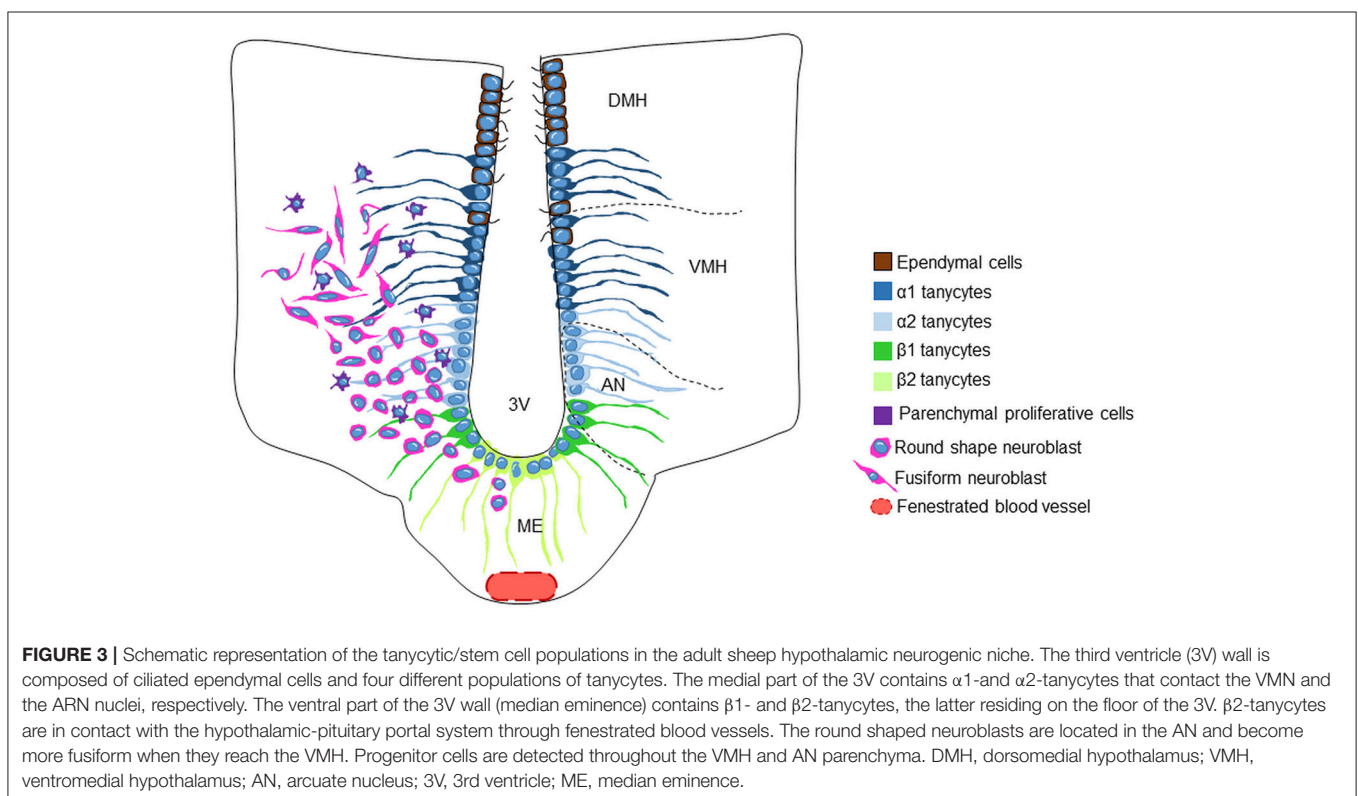
2012; Werner et al., 2012; review in Lee and Blackshaw, 2012), rats (Pencea et al., 2001; Xu et al., 2005; Pérez-Martín et al., 2010), voles (Fowler et al., 2005), hamsters (Huang et al., 1998; Mohr and Sisk, 2013), and sheep (Migaud et al., 2010, 2011; Batailler et al., 2014, 2016; **Figure 3**), indicating that structural plasticity involving *de novo* cell genesis is an evolutionary conserved process possibly taking place in humans as well (Dahiya et al., 2011; Batailler et al., 2014). The hypothalamus is limited anteriorly and posteriorly by the optic chiasm and the mammillary bodies, respectively, whereas the optic tract constitutes its lateral perimeter. This small ventral brain region is symmetrically located between the third ventricle and contains numerous distinct nuclei (**Figure 3**). Constant hypothalamic neurogenic sites have been located in the subependymal zone of the third ventricle of the arcuate nucleus and the median eminence (ME; Kokoeva et al., 2005; Yuan and Arias-Carrion, 2011; Cheng, 2013). This neurogenesis process may be involved in hypothalamic regulatory mechanisms, including in the control of energy balance and in the regulation of reproductive physiology.

Hypothalamic Cell Proliferation

There are now numerous pieces of evidence indicating that new neurons can be formed outside the SGZ and the SVZ, in niches located in other structures of the adult brain. The presence of cells having incorporated the proliferation marker BrdU in the adult hypothalamus was first reported in 2001 in the rat (Pencea et al., 2001). These authors showed for the first time a proliferative activity outside the neurogenic niches and

demonstrated that the number of cells in proliferation increased after brain-derived neurotrophic factor (BDNF) infusion. Few years later, a more comprehensive study, revealed the presence of neural progenitor cells (NPCs) located in the ependymal layer of the adult third ventricle, including tanycytes-derived NPCs (Xu et al., 2005). From then, it was shown that hypothalamic cell proliferation occurs constitutively without conspicuous contribution of external signals (Huang et al., 1998; Pencea et al., 2001; Fowler et al., 2002; Kokoeva et al., 2005; Xu et al., 2005; Pérez-Martín et al., 2010; Migaud et al., 2011; Mohr and Sisk, 2013) regardless of the concentration of the proliferation marker used, the route of administration, or the species being studied.

In sheep, constitutive cell proliferation in the whole hypothalamus is detected 24 h after a single intravenous (i.v.) BrdU injection (Migaud et al., 2010, 2011) and substantial proliferative activity is observed in the hypothalamus of Ile-de-France ewe (i.e., ~400 BrdU+ nuclei per hypothalamic section). BrdU+ nuclei are often seen as contacting cell pairs, which is a characteristic of recent or ongoing mitotic activity (Migaud et al., 2011). Similarly, in the male Soay sheep, dividing cells are detected in the hypothalamus following two consecutive i.v. injections of BrdU. Mitotic cells have been detected in the three distinct hypothalamic regions the ependymal cell layer, the median eminence and a region covering the tanycyte projection zone (Hazlerigg et al., 2013). More recently, the use of proliferating cell nuclear antigen (PCNA) a cell proliferation marker confirms ongoing hypothalamic new cell generation in the arcuate nucleus and the ME of adult sheep (Batailler et al., 2014). However, no BrdU+ cells are detected in the



hypothalamus of female Merino sheep (Hawken et al., 2009). These inconsistencies could be attributed to the differences in the technical procedures used, including the protocol for BrdU immunodetection (e.g., different primary antisera concentrations of HCl used).

Fate of the Hypothalamic Newborn Cells

The hypothalamic mitotic cells in sheep adopt a neuronal phenotype as revealed by the high number of immature neurons that express DCX (Batailler et al., 2014; Migaud et al., 2015; **Figure 1D**). Among the cohort of immature neurons, a subset appear to go through maturation, as demonstrated by the colocalization of DCX with markers of more mature neurons, such as human neuronal protein C and D (HuC/D). More specifically, 1 month following BrdU administration, around 17% of the hypothalamic BrdU+ cells expressed the mature neuronal marker NeuN, confirming the existence of a neurogenic process in the adult sheep hypothalamus (Migaud et al., 2011). In contrast, in Soay rams, the hypothalamic BrdU-positive cells did not seem to adopt a neuronal phenotype, but rather, 10% of the mitotic cells located in the ME showed morphological features consistent with microglia as they co-express the pan-leukocytic marker CD45 (Hazlerigg et al., 2013). The phenotype of the remaining 90% BrdU positive cells remain unknown. The reason for this discrepancy is not clear, but one hypothesis could be that the maturation process was delayed due to the photoperiodic protocol used, leading to a delayed expression of the marker for mature neurons.

However, in rodent species, the neuronal commitment of the hypothalamic newborn cells was generally verified and between 10 and 37% of the total BrdU-positive cells were found to co-express the neuronal marker. The number of hypothalamic newborn neurons is, therefore, much lower than in the two canonical niches, the SVZ and SGZ. The existence of constitutive hypothalamic neurogenesis at a low rate of neurogenesis was established in rodent models using genetic fate mapping techniques (Lee et al., 2012; Li et al., 2012; Haan et al., 2013; Robins et al., 2013a). By these approaches, the phenotype of the adult born hypothalamic neurons was determined by their expression of peptides relevant for metabolism and feeding control, including neuropeptide-Y (NPY), proopiomelanocortin (POMC; Kokoeva et al., 2005; Li et al., 2012; Haan et al., 2013), and agouti-related protein (AgRP; Pierce and Xu, 2010). In sheep, subsets of hypothalamic neuroblasts also developed specific hypothalamic phenotypes such as NPY (Batailler et al., 2014). In addition, hypothalamic new-born neurons were shown to express estrogen receptor (ER) α , in female mice (Bless et al., 2016) and in ewes (Batailler et al., 2014) indicative of a putative role for these newborn (ER) α cells in the modulation of reproductive behavior (Musatov et al., 2006; Gao and Horvath, 2008).

The sheep hypothalamus appears to be also gliogenic because 70% of the new cells differentiated into S100B+ and GFAP+ astrocytes. However, similarly to what is described in the rat model, no new cells become oligodendrocytes (Steiner et al., 2004). Yet, in mice, Kokoeva et al. (2005) reported the capacity of the hypothalamic adult born cells to produce oligodendrocytes using APC another oligodendrocytic marker. Whether these

results reveal difference between species in the time course of glial differentiation requires clarification. Interestingly, adult hypothalamic neurogenesis is notably influenced by various external stimuli, including season (Migaud et al., 2010, 2011, 2015, see below for details), diet (for a review, see Yon et al., 2013), exercise (Niwa et al., 2015) and the social environment (Fowler et al., 2002), which could also explain inconsistencies in the number of newborn neurons detected depending on the study.

The Hypothalamic Neurogenic Niche

In contrast with the two main documented niches the SVZ and the SGZ, little is known about the hypothalamic neurogenic niche, and most of our knowledge is inferred from rodent studies. Three cell layers were identified in the adult third ventricle wall: multiciliated cubic ependymal cells, astrocytic subependyma and non-ciliated cells known as tanycytes extending their long cell processes into the hypothalamic parenchyma (Flament-Durand and Brion, 1985). This subset of specialized ependymoglia cells retaining the morphological features of embryonic radial glia cells contact the cerebrospinal fluid. This configuration is generally reminiscent of the general structural organization of the SVZ of the lateral ventricle, although the hypothalamic region lined by the tanycytes lacks an identifiable subventricular zone, like the one lining the walls of the lateral ventricles (Doetsch et al., 1997; Alvarez-Buylla et al., 2002).

Four types of hypothalamic tanycytes have been distinguished regarding based on their location within the ventricular wall and gene expression profile (**Figure 3**). The α 1- and α 2-tanycytes reside at the level of the ventromedial nuclei and the arcuate nuclei respectively. β 1-tanycytes are located in the lateral part of the infundibulum. Finally, β 2-tanycytes are positioned in the floor of the third ventricle (Rodriguez et al., 2005). Interestingly, in contrast to other hypothalamic regions, the ME lies outside of the blood-brain barrier, and is therefore a circumventricular organ (Miyata, 2015). Consequently, tanycytes located in the ME are responsive to the hormones, growth factors and nutritional substances transported by the blood and conversely, the tanycytic cell bodies lining the third ventricular wall are exposed to the molecular signals conveyed by the cerebrospinal fluid.

All the tanycyte populations express proteins that are typical for NSC/precursor cells, including Sox2 (Lee et al., 2012; Li et al., 2012), Nestin (Wei et al., 2002), vimentin (Bolborea and Dale, 2013), doublecortin-like protein (DCL; Saaltink et al., 2012), and Alpha-tanycytes express GFAP and the astrocyte-specific glutamate transporter (GLAST) like the SVZ B1 type cells, whereas β tanycytes and a small portion of α tanycytes express Fibroblast growth factor 10 (FGF-10; Li et al., 2012; Robins et al., 2013a), a growth factor implicated in regulating the formation of cortical radial glial cells (Sahara and O'Leary, 2009).

In the sheep hypothalamus, numerous nuclei expressing Sox2 are found in the ependymal or subependymal layers. In addition, almost all cells lining the walls of the third ventricle express the intermediate filament vimentin and most vimentin positive cells, if not all, also strongly coexpressed GFAP in their long processes, producing a staining pattern similar to that previously described in other species, particularly in rodents (Prevot, 2002; Kameda

et al., 2003; Baroncini et al., 2007; Langlet et al., 2013). In both the ME and the arcuate nucleus, cells immunoreactive for the three stem cell markers Sox2, GFAP, and Vimentin, are therefore principally distributed in the ependymal and subependymal cell layers lining the third ventricle. The existence of a neurogenic niche in the sheep hypothalamus was further evidenced by the typical tanycyte morphology of the cells lining the third ventricular wall expressing both nestin and Sox2.

The identity of the tanycyte subtypes representing the rodent hypothalamic NSCs is still a matter of debate. Some lineage tracing experiments have revealed that α 2-tanycytes have the potential to be the hypothalamic NSCs (Robins et al., 2013a), since the proliferation of α -tanycyte is promoted by FGF2 (Robins et al., 2013a) and the insulin-like growth factor (IGF; Pérez-Martín et al., 2010). In addition, they are the only subtype capable of forming neurospheres and they can give rise to β 1-tanycytes. Alternatively, several other studies using different lineage tracing mice models have shown that β -tanycytes are the major sources of progenitor cells in the hypothalamus of young adult mice (Bolborea and Dale, 2013; Haan et al., 2013). More specifically, β 2 cells are highly proliferative and neurogenic in young animals (Lee et al., 2012, 2014). Due to our large mammalian model, it is hardly conceivable to develop such intersectional genetic approaches in order to identify the tanycyte(s) subtypes incriminated. However, the recent introduction of the “CRISPR-cas9” technology (Hsu et al., 2014) and the potential regulatory programmable schemes employed in the future to provide temporal control for these reagents (Guha et al., 2017) will be useful to modify the genome, regardless of the mammalian species. These strategies will undoubtedly participate in our understanding of neurogenesis mechanisms in large mammalian species like sheep.

While tanycytes surely constitute a major class of NSCs of the hypothalamic neurogenic niche, a subset of Sox2 expressing cells also showing a proliferative activity has been detected in the hypothalamic parenchyma in sheep (Migaud et al., 2011; Batailler et al., 2014) and in rodents (Kokoeva et al., 2005; Li et al., 2012; Robins et al., 2013b). Whether these cells contribute to the neurogenic process and to hypothalamic physiological functions is currently unknown.

In sheep, numerous DCX-positive immature neurons are observed in the arcuate nucleus, likely originating from the germinative zones lining the ventral part of the third ventricle (Batailler et al., 2014). The morphology of the DCX-positive cells changes whether they are close to or distant from the third ventricle cavity. DCX-positive cells near the third ventricle show a rather round shape with no processes, typical of very immature neuroblasts. Conversely, DCX-positive cells found in the parenchyma of the ventromedial hypothalamus show fusiform perikarya and lengthened processes, some of the characteristics of migrating cells undergoing maturation (Figure 3; Batailler et al., 2014). One hypothesis is that neuroblasts located in the subependymal niche may spread toward neighboring hypothalamic nuclei and form a migratory path (Batailler et al., 2014), as it has been suggested in rodents (Haan et al., 2013). One way to test this hypothesis would be to label progenitors with iron oxide particles and detect

their putative migration by means of magnetic resonance imaging.

In contrast, a very different pattern of DCX labeling was found in the mouse hypothalamus (Kokoeva et al., 2007; Batailler et al., 2014), with only low-intensity labeled cells detected in the arcuate nucleus and moderate to high levels of labeled fibers in the ME. This was true in both sexes, excluding an effect of the estrous cycle. Likely differences in the function of these DCX-positive cells between species may be the reason for this discrepancy.

The flow of adult rodent hypothalamic neurogenesis is promoted by numerous growth factors, including IGF-1 (Pérez-Martín et al., 2010; Chaker et al., 2016), BDNF (Pencea et al., 2001), ciliary neurotrophic factor (CNTF; Kokoeva et al., 2005), FGF, and epidermal growth factor (Xu et al., 2005; Pierce and Xu, 2010, reviewed in Sousa-Ferreira et al., 2014). Additionally, a recent study also reported an enhancement of the hypothalamic proliferating activity in aged mice by gonadotropin releasing hormone (Zhang et al., 2013). As with the DG and the SVZ, the rate of hypothalamic proliferation may be affected by exogenous factors. For example, in the highly social prairie vole male exposure enhances cell proliferation in the female hypothalamus and the amygdala when compared to socially isolated animals (Fowler et al., 2002). Voluntary exercise may also enhance hypothalamic cell turnover in rats (Niwa et al., 2015).

PHYSIOLOGICAL REGULATION OF NEUROGENESIS

Seasonal Regulation

In seasonal species, photoperiod is a critical environmental cue required for the seasonal programming of reproductive and metabolic functions, an adaptive strategy to cope with the annual fluctuations in climate, temperature, and food availability. The influence of seasons and photoperiod on adult cell proliferation and neurogenesis, mainly in the two canonical niches, has been extensively studied in a broad range of mammalian seasonal species including Golden (Huang et al., 1998) and F1B (Smith et al., 2001) hamsters, deer mice (Perrot-Sinal et al., 1998), white footed mice (Walton et al., 2012), meadow voles (Galea and McEwen, 1999; Galea et al., 1999; Ormerod and Galea, 2003), Richardson's ground squirrel (Burger et al., 2013), eastern gray squirrels (Lavenex et al., 2000), shrew (Bartkowska et al., 2008), and sheep (Migaud et al., 2010, 2011; Hazlerigg et al., 2013).

Seasonal changes in cell proliferation have been detected in the DG of adult female meadow voles (Galea and McEwen, 1999; Galea et al., 1999). In this species, females show higher levels of cell proliferation than males and higher levels during the non-breeding than during the breeding period (Galea and McEwen, 1999; Ormerod and Galea, 2003). In the DG of the golden hamster, a two-fold increase in the number of dividing cells has been found after a transition from long days to short days (Huang et al., 1998). Photoperiod also affects cell proliferation in DG of the Richardson's ground squirrel (Burger et al., 2013), the Soay ram (Hazlerigg et al., 2013), and the shrew (Bartkowska et al., 2008). In contrast, some studies failed to detect cell proliferation

changes in male meadow voles (Ormerod and Galea, 2003) or in squirrels (Lavenex et al., 2000).

The olfactory neurogenic niche is also influenced by photoperiodic changes. In short day exposure, Syrian hamsters show an increased rate of neurogenesis in the MOB (Huang et al., 1998). In white-footed mice, an increase in new neurons in the caudal olfactory bulb resulting from short day exposure is linked with changes in behavioral responses to the urine of conspecific males (Walton et al., 2012), suggesting that olfactory neurogenesis may be a mechanism underlying photoperiodic variations in social interactions. In contrast, in two species of photoperiodic shrews, short day exposure induces a reduction in SVZ proliferation and neurogenesis (Bartkowska et al., 2008). In the sheep SVZ, no cell proliferation changes are observed across the seasons (Migaud et al., 2011). All these data indicate species-specific effects of the photoperiod on the neurogenesis in the SGZ and the SVZ.

By contrast, only a few studies have examined the influence of season on adult hypothalamic neurogenesis. In Syrian hamsters, a transition from long to short days increases cell proliferation (Huang et al., 1998). In Siberian hamster tanycytes, the expression of the transcript for nestin, an intermediate filament protein used as a neural stem cell marker (Kronenberg et al., 2003; for review see Wiese et al., 2004), is down-regulated during short-day photoperiod exposure (Barrett et al., 2006; Ebling and Barrett, 2008).

In Ile-de-France ewes, the proliferative capacity of the hypothalamus is seasonally regulated (Migaud et al., 2010, 2011). Significantly more new hypothalamic cells are generated, independent of sex steroids, during the short days (corresponding to the period of sexual activity in this species) compared with the long days (coinciding with the period of sexual inactivity; Migaud et al., 2011). However, in Soay rams, no clear seasonal variation is observed in the level of cell proliferation, whatever the hypothalamic region considered (Hazlerigg et al., 2013). The reason for this discrepancy is unknown but might depend on differences in the immunohistochemical procedure, or in the photoperiodic treatment provided. Nevertheless, a higher density of DCX-expressing neurons is found in the arcuate nucleus and the ME (Batailler et al., 2014), the most neurogenic region of the hypothalamus (Lee et al., 2013), during the stimulatory short photoperiod compared with the inhibitory long photoperiod. These data suggest that seasonal regulation of neurogenesis might be a common regulatory mechanism among adult seasonal mammals.

Regulation by Physiological Status and Social Interactions

The different processes of neurogenesis, mainly production, maturation, and survival are also under the control of various internal factors (Lledo et al., 2006). Many studies have shown that the estrous cycle, pregnancy, and parturition regulate hippocampal and olfactory neurogenesis in laboratory rodents (for review: Pawluski et al., 2009; Lévy et al., 2011). In sheep, physiological changes associated with parturition

influence cell proliferation in the DG and the MOB. Mothers permanently separated from their newborn lambs immediately after parturition show a decrease in cell proliferation, evidenced by BrdU labeling, in the MOB and in the sub-granular zone of the DG compared to non-separated ewes (Brus et al., 2010). In a follow-up study, using Ki67 as a marker of proliferation, a similar decrease in proliferation was found in both the MOB and the DG of parturient ewes in comparison to non-pregnant females (Brus et al., 2014).

This down-regulation could be the consequence of the change in circulating steroids occurring at parturition. In the female rat, a regime of ovarian steroids that mimicks the fluctuations occurring at birth, decreases cell proliferation in the DG (Tanapat et al., 2005; Pawluski et al., 2009). The increased cortisol levels at parturition also decreases cell proliferation in the DG (Tanapat et al., 1999; Darnaudery et al., 2007). In sheep, both oestradiol and cortisol could be involved in the decreased cell proliferation in the DG and in the MOB. Interestingly, estrogen and glucocorticoid receptors are found in both structures (Morimoto et al., 1996; Shughrue et al., 1997; Sah et al., 2005). This down-regulation is not observed in the SVZ, suggesting that olfactory cell proliferation could be differently regulated according to the brain region. Supporting this view, the SVZ lacks estrogen and glucocorticoid receptors (Shughrue et al., 1997; Shughrue and Merchenthaler, 2000) and cortisol treatment differentially affects the DG and the SVZ, reducing neural production in the DG but sparing it in the SVZ (Siopi et al., 2016).

Regulation of cell survival by parturition differs from that of cell proliferation because changes in survival are found only for the DG but not for the MOB. Survival is reduced by parturition as indicated by the finding that mothers separated from their young at parturition show a down-regulation of BrdU+/NeuN+ cells (Brus et al., 2014). Cortisol release at parturition could be involved, as well as other endocrine factors as oxytocin (Leuner et al., 2012). By contrast, no change in the number of neuroblasts is found in these parturient ewes, suggesting differential regulation according to the maturity stage, which has been reported for the effects of corticosterone in the DG of mice (Gonzalez-Perez et al., 2011; Lussier et al., 2013).

Not only can endocrine changes regulate neurogenesis, but social factors can also affect cell proliferation and survival (Gheusi et al., 2009; Holmes, 2016). In sheep, a reproductive cycle can be induced in anoestrus females when exposed to males (Martin et al., 1986), which doubles the rate of cell proliferation in the DG (Hawken et al., 2009). In addition, in sheep maternal behavior at parturition depends on olfactory attraction toward amniotic fluids that cover the newborn lamb (Lévy et al., 2004; Poindron et al., 2007; Lévy and Keller, 2009). These cues render the newborn lamb attractive and stimulate its licking by the mother, thus inducing maternal behavior. Moreover, ewes are able to discriminate their own young from an alien lamb by learning its olfactory signature within 2 h after parturition (Lévy et al., 2004; Lévy and Keller, 2009). This learning is accompanied with neurochemical changes occurring in the MOB (Lévy et al., 1993; Lévy and Keller, 2009). Olfactory neurogenesis could also contribute to the onset of maternal behavior and associated learning, and altered neurogenesis during the establishment of

maternal behavior support this hypothesis. Brus et al. (2010) show that decreased cell proliferation occurs in the SVZ, but not in the DG, in ewes that remain with their lambs for the first 2 days after parturition when compared to ewes separated from them. However, SVZ cell proliferation is not affected in ewes mating with a male, and thus appears to be specific to interactions with the young. Consistent with these findings, the survival of neuroblasts in the MOB is also reduced in ewes interacting with their lamb but maturation of the remaining neuroblasts is heightened (Brus et al., 2014). Interactions with young and associated olfactory learning rather than parturition are responsible for these modifications because they are prevented by separating ewes from their lambs at parturition. Numerous studies report that olfactory experience sculpts newborn neurons (for review: Lazarini and Lledo, 2011), with nostril closure decreasing (Saghatelian et al., 2005) and odor enrichment increasing the arborization complexity of newborn granule cells (Livneh and Mizrahi, 2011). In the context of motherhood, olfactory exposure to pups induces changes in structural synaptic plasticity of newly born olfactory neurons in mice (Kopel et al., 2012; Belnoue et al., 2016). Although, the functional relevance of the plasticity occurring in the MOB of sheep remains to be determined, one can hypothesize that the decrease in the number of neuroblasts would reduce cell competition and consequently increases their maturation, allowing them to be integrated in the neural network involved in learning. In support to this proposition, neural network models of hippocampal neurogenesis show that high levels of cell proliferation have negative effects on the stability of neural activity and consequently for learning (Lehmann et al., 2005; Butz et al., 2006). Another modeling study indicates that an increase in cell proliferation causes a reduction in the amount of synaptic rewiring which is not beneficial for learning (Butz et al., 2008). Whether these findings can be applied for olfactory neurogenesis remains to be determined.

FUNCTIONAL RELEVANCE OF NEUROGENESIS

Hypothalamic Neurogenesis

The hypothalamus is an essential homeostatic regulator of many physiological and behavioral processes, such as reproduction, feeding, growth, metabolism, body temperature, and circadian rhythms (Saper and Lowell, 2014). Some of the important roles of this structure are to integrate sensory inputs with hormonal and peripheral signals, to control pituitary hormone secretions and regulate the downstream major biological functions. Evidence for adult hypothalamic neurogenesis raises the issue of its functional role that is still in its early exploratory phases. Because of the key role played by the hypothalamus in metabolism and food intake, the significance of hypothalamic neurogenesis in these functions has been the most explored so far. In mice, hypothalamic newborn neurons acquire the identities and the functional phenotypes related to the control of energy homeostasis, including NPY or POMC (Kokoeva et al., 2005; McNay et al., 2012; Gouaze et al., 2013). In addition, some of

these new neurons are responsive to fasting and leptin (Kokoeva et al., 2005; Pierce and Xu, 2010; Haan et al., 2013). Several recent studies show that diet can regulate adult hypothalamic neurogenesis, although the results are equivocal. Opposing effects of high fat diet on neurogenesis and body weight are reported depending on the ages and sexes of the animals tested, as well as the duration of the diet and the targeted hypothalamic area (Lee et al., 2012; Li et al., 2012). In mice, the loss of weight induced by the administration of the CNTF is suppressed when administered concomitantly with the cytosine arabinoside (Ara-C), an antimetabolic drug, which blocks hypothalamic cell proliferation indicating a role of hypothalamic neurogenesis in weight regulation (Kokoeva et al., 2005).

The hypothalamus is also the integrative center that regulates reproduction, and newly formed hypothalamic cells express ER α (Batailler et al., 2014; Bless et al., 2016), a receptor involved in many aspects of both male and female reproduction (Ogawa et al., 1998; Emmen and Korach, 2003). In sheep, to explore the role of hypothalamic neurogenesis in the seasonal control of reproductive function, Ara-C was administered into the third ventricle for 30 days during the peak of hypothalamic cell proliferation (Batailler et al., submitted). This treatment induced a notable 75% decrease in hypothalamic neurogenesis assessed by the density of DCX-positive cells. This decrease resulted in an advance of the entry in seasonal anoestrus and a similar advance in the re-entry in sexual activity the following season. Interestingly, in our experimental conditions, none of the animals showed altered body weight. These data draw a strong interaction between new neuron production and the seasonal adaptation of neuroendocrine networks, with hypothalamic neurogenesis being likely involved in the functional adaptation of the brain to the changing environmental conditions. The precise identification of the phenotype and the destinations of the newborn neurons will give insights to the molecular pathways involved in these processes.

Olfactory Neurogenesis

In mammals, only a few studies have looked at changes in social behavior induced by reducing or blocking neurogenesis (Holmes, 2016). In sheep, the functional relevance of neurogenesis has been examined in the context of maternal behavior by testing the hypothesis that increased activation of newborn neurons after exposure to lambs is behaviourally relevant. By pairing neurogenic markers with markers of neural activity, activation of olfactory newborn neurons have been compared between mothers exposed either to their own lamb, an unfamiliar lamb, or to an adult conspecific (Corona et al., 2016). Exposure to either both lambs increases the percentage of neuroblasts activated in the granular layer of the MOB compared to exposure to an unfamiliar ewe, indicating that the preferential activation is not seen for any social odors but is specific to lamb odors. By contrast, newborn neurons in the DG do not show any activation in response to any of the odors.

Hence, newborn neurons of the MOB could participate to the processing of olfactory cues responsible for maternal attraction to any newborn lambs at parturition. However, these olfactory adult-born neurons fail to differentiate between familiar and

unfamiliar lamb exposure, so another pool of newborn neurons of distinct ages could be involved in recognition of the familiar lamb.

To further understand the functional relevance of olfactory neurogenesis disruption of neurogenesis was performed and its consequences on maternal behavior was assessed. To prevent adult olfactory neurogenesis in parturient sheep mothers, infusion of Ara-C into the SVZ for 1 month during pregnancy was performed and the consequences on maternal behavior and recognition of the familiar lamb assessed during early postpartum period (Corona et al., submitted). Ara-C infusion led to a 70% reduction in olfactory neurogenesis, evidenced by DCX labeling, sparing hippocampal neurogenesis. The impairment of olfactory neurogenesis was found to reduce maternal vocalizations in the presence of the familiar lamb at parturition and during selectivity tests. However, all the ewes are maternal and selective for their own lamb. These relatively minor effects on mothering could be related to limitations of the method used for blocking neurogenesis. Although the levels of olfactory neurogenesis are dramatically reduced by Ara-C infusion, it is possible that the remaining olfactory newborn neurons are sufficient to sustain maternal behavior and olfactory recognition of the familiar lamb. Similarly, in mice infusion of an anti-mitotic agent into the SVZ induces little disturbance of maternal behavior (Larsen and Grattan, 2010) and irradiation of the SVZ does not alter either maternal behavior or dams' ability to discriminate familiar pups from alien pups (Feierstein et al., 2010). However, genetic manipulations inducing continuous inhibition of neurogenesis during pregnancy and postpartum disrupts nursing (Sakamoto et al., 2011). Therefore, a more extended ablation of olfactory neurogenesis would be helpful to assess the role of olfactory neurogenesis in motherhood of sheep.

CONCLUSION AND FUTURE DIRECTIONS

The generation of new neurons in the adult mammalian brain, long thought to be non-existent, is now widely established

although the issue of human olfactory neurogenesis is still under debate (Curtis et al., 2007; Bergmann et al., 2012). Over the last few decades, studies performed in rodents have led to considerable improvements in our understanding of this phenomenon. However, as shown in the present review, the cellular and molecular machinery and the functional mechanisms behind how this process influences adult brain circuits may differ qualitatively and quantitatively between species according to their brain features, lifespan, physiological, and behavioral burdens (Table 1). These differences between species stress the importance of analyzing the neurogenic process in multiple different model systems. Overall, this review highlights sheep as an appropriate model to investigate the role of adult neurogenesis during individual recognition/discrimination and in neuroendocrine behaviors related to reproduction, although further experiments are needed to explore in depth the neural circuits underlying these relationships as well as the physiological underpinnings involved.

Similar to laboratory rodents, studies performed in sheep have demonstrated the existence of neurogenic niches in the SVZ, the SGZ, and the hypothalamus. In contrast, the cellular composition and the morphological organization of the sheep SVZ and the hypothalamus differ from that of rodents (Table 1). Furthermore, a longer maturation time frame is observed for newborn neurons in sheep compared with rodents. These latter features appear to share similarities with the non-human primate brain. In addition, a comparable pattern of distribution of neuroblasts is reported in sheep and human hypothalamus, but both different from the murine hypothalamus (Batailler et al., 2014). Thus, sheep could be a suitable alternative model to primates to gain insights into the function of adult neurogenesis for therapeutics in humans. Currently, no data are available on the time required for the full neuronal maturation of the newborn neurons in our species and further investigation is necessary to compare the timing of differentiation of the new neurons in humans and in non-human primates or sheep.

TABLE 1 | Comparative organization of the three neurogenic niches the SVZ, SGZ, and the hypothalamic neurogenic niche (Hyp) in five mammalian species.

	SVZ					SGZ		Hyp		
	PPCs	Hypocellular Gap	RMS	Migration rates	Neurogenic olfactory ventricle	PPCs	Adult born GCs	PPCs	DCX+ Neuroblasts	Adult born neurons
Rodents	++	0	+	3–7 days in mice 10–12 days in rats	0	++	+	++	±	POMC, NPY, AgRP
Rabbit	++	+	+	ND	+	ND	ND	ND	ND	ND
NHP	++	+	+	2–3 months	0	++	+	ND	ND	ND
Sheep	++	+	+	1 month	+	+	+	++	++	NPY
Adult Human	+	0	0	ND	0	++	++	ND	ND	ND

NHP, Non-human primates; PPCs, proliferative progenitor cells; RMS, rostral migratory stream; ++, strong presence; +, presence; ±, weak presence; 0, absence; ND, Not determined. POMC, Pro-Opiomelanocortin. NPY, Neuropeptide Y; AgRP, Agouti related Peptide. Rodents, Lois and Alvarez-Buylla, 1994; Kokoeva et al., 2005; Pierce and Xu, 2010; Lee et al., 2012; Haan et al., 2013; Rabbits, Bonfanti and Ponti, 2008; Larriva-Sahd, 2014; NHP, Gil-Perotin et al., 2009; Sawamoto et al., 2011; Wang et al., 2011; Sheep, Migaud et al., 2011; Brus et al., 2013; Batailler et al., 2014. Adult human, Quinones-Hinojosa et al., 2006; Butz et al., 2008; Sanai et al., 2011; Spalding et al., 2013.

Increasing our knowledge on the existence of newly formed neurons in humans will also require the development of advanced imaging techniques. In some regards, sheep are already considered as an important developing model for translational imaging procedures (Forschler et al., 2007; van der Bom et al., 2013; Beuing et al., 2014) and in support of that the ovine brain template and corresponding tissue probability maps have very recently been generated and made available (Ella and Keller, 2015; Nitzsche et al., 2015). In our sheep, a magnetic resonance imaging study is currently being undertaken to label progenitors with iron oxide particles to detect their migration. The implementation of neuroimaging procedures enabling the study of neurogenesis in an appropriate animal model, such as sheep, will very likely lead to the development of translational experiments performed in normal and pathological human brains.

REFERENCES

- Ahmed, E. I., Zehr, J. L., Schulz, K. M., Lorenz, B. H., DonCarlos, L. L., and Sisk, C. L. (2008). Pubertal hormones modulate the addition of new cells to sexually dimorphic brain regions. *Nat Neurosci.* 11, 995–997. doi: 10.1038/nn.2178
- Akbari, E. M., Chatterjee, D., Lévy, F., and Fleming, A. S. (2007). Experience-dependent cell survival in the maternal rat brain. *Behav. Neurosci.* 121, 1001–1011. doi: 10.1037/0735-7044.121.5.1001
- Alvarez-Buylla, A., Garcia-Verdugo, J. M., and Tramontin, A. D. (2001). A unified hypothesis on the lineage of neural stem cells. *Nat. Rev. Neurosci.* 2, 287–293. doi: 10.1038/35067582
- Alvarez-Buylla, A., Seri, B., and Doetsch, F. (2002). Identification of neural stem cells in the adult vertebrate brain. *Brain Res. Bull.* 57, 751–758. doi: 10.1016/S0361-9230(01)00770-5
- Amrein, I. (2015). Adult hippocampal neurogenesis in natural populations of mammals. *Cold Spring Harb. Perspect. Biol.* 7:a021295. doi: 10.1101/cshperspect.a021295
- Amrein, I., Isler, K., and Lipp, H. P. (2011). Comparing adult hippocampal neurogenesis in mammalian species and orders: influence of chronological age and life history stage. *Eur. J. Neurosci.* 34, 978–987. doi: 10.1111/j.1460-9568.2011.07804.x
- Baroncini, M., Allet, C., Leroy, D., Beauvillain, J. C., Francke, J. P., and Prevot, V. (2007). Morphological evidence for direct interaction between gonadotrophin-releasing hormone neurons and astroglial cells in the human hypothalamus. *J. Neuroendocrinol.* 19, 691–702. doi: 10.1111/j.1365-2826.2007.01576.x
- Barrett, P., Ivanova, E., Graham, E. S., Ross, A. W., Wilson, D., Ple, H., et al. (2006). Photoperiodic regulation of cellular retinol binding protein, CRBP1 [corrected] and nestin in tanycytes of the third ventricle ependymal layer of the Siberian hamster. *J. Endocrinol.* 191, 687–698. doi: 10.1677/joe.1.06929
- Bartkowska, K., Djavadian, R. L., Taylor, J. R., and Turlejski, K. (2008). Generation recruitment and death of brain cells throughout the life cycle of *Sorex* shrews (Lipotyphla). *Eur. J. Neurosci.* 27, 1710–1721. doi: 10.1111/j.1460-9568.2008.06133.x
- Batailler, M., Derouet, L., Butruille, L., and Migaud, M. (2016). Sensitivity to the photoperiod and potential migratory features of neuroblasts in the adult sheep hypothalamus. *Brain Struct. Funct.* 221, 3301–3314. doi: 10.1007/s00429-015-1101-0
- Batailler, M., Drogue, M., Baroncini, M., Fontaine, C., Prevot, V., and Migaud, M. (2014). DCX-expressing cells in the vicinity of the hypothalamic neurogenic niche: a comparative study between mouse, sheep, and human tissues. *J. Comp. Neurol.* 522, 1966–1985. doi: 10.1002/cne.23514
- Bedard, A., and Parent, A. (2004). Evidence of newly generated neurons in the human olfactory bulb. *Dev. Brain Res.* 151, 159–168. doi: 10.1016/j.devbrainres.2004.03.021
- Bedard, A., Cossette, M., Levesque, M., and Parent, A. (2002). Proliferating cells can differentiate into neurons in the striatum of normal adult monkey. *Neurosci. Lett.* 328, 213–216. doi: 10.1016/S0304-3940(02)00530-X
- Bedard, A., Gravel, C., and Parent, A. (2006). Chemical characterization of newly generated neurons in the striatum of adult primates. *Exp. Brain Res.* 170, 501–512. doi: 10.1007/s00221-005-0233-5
- Belnoue, L., Malvaut, S., Ladeveze, E., Abrous, D. N., and Koehl, M. (2016). Plasticity in the olfactory bulb of the maternal mouse is prevented by gestational stress. *Sci. Rep.* 6:37615. doi: 10.1038/srep37615
- Bergmann, O., Liebl, J., Bernard, S., Alkass, K., Yeung, M. S. Y., Steier, P., et al. (2012). The age of olfactory bulb neurons in humans. *Neuron* 74, 634–639. doi: 10.1016/j.neuron.2012.03.030
- Bernier, P. J., Bédard, A., Vinet, J., Lévesque, M., and Parent, A. (2002). Newly generated neurons in the amygdala and adjoining cortex of adult primates. *Proc. Natl. Acad. Sci. U.S.A.* 99, 11464–11469. doi: 10.1073/pnas.172403999
- Beuing, O., Boese, A., Kyriakou, Y., Deuerling-Zengh, Y., Jollenbeck, B., Scherlach, C., et al. (2014). A novel technique for the measurement of CBF and CBV with robot-arm-mounted flat panel CT in a large-animal model. *AJNR Am. J. Neuroradiol.* 35, 1740–1745. doi: 10.3174/ajnr.A3973
- Bless, E. P., Yang, J., Acharya, K. D., Nettles, S. A., Vassoler, F. M., Byrnes, E. M., et al. (2016). Adult neurogenesis in the female mouse hypothalamus: estradiol and high-fat diet alter the generation of newborn neurons expressing estrogen receptor alpha. *eNeuro* 3:eNeuro-0027. doi: 10.1523/ENEURO.0027-16.2016
- Bolborea, M., and Dale, N. (2013). Hypothalamic tanycytes: potential roles in the control of feeding and energy balance. *Trends Neurosci.* 36, 91–100. doi: 10.1016/j.tins.2012.12.008
- Bonfanti, L., and Ponti, G. (2008). Adult mammalian neurogenesis and the New Zealand white rabbit. *Vet. J.* 175, 310–331. doi: 10.1016/j.tvjl.2007.01.023
- Brown, J. P., Couillard-Despres, S., Cooper-Kuhn, C. M., Winkler, J., Aigner, L., and Kuhn, H. G. (2003). Transient expression of doublecortin during adult neurogenesis. *J. Comp. Neurol.* 467, 1–10. doi: 10.1002/cne.10874
- Brus, M., Meurisse, M., Franceschini, I., Keller, M., and Lévy, F. (2010). Evidence for cell proliferation in the sheep brain and its down-regulation by parturition and interactions with the young. *Horm. Behav.* 58, 737–746. doi: 10.1016/j.yhbeh.2010.07.006
- Brus, M., Meurisse, M., Gheusi, G., Keller, M., Lledo, P. M., and Lévy, F. (2013). Dynamics of olfactory and hippocampal neurogenesis in adult sheep. *J. Comp. Neurol.* 521, 169–188. doi: 10.1002/cne.23169
- Brus, M., Meurisse, M., Keller, M., and Lévy, F. (2014). Interactions with the young down-regulate adult olfactory neurogenesis and enhance the maturation of olfactory neuroblasts in sheep mothers. *Front. Behav. Neurosci.* 8:53. doi: 10.3389/fnbeh.2014.00053
- Burger, D. K., Saucier, J. M., Iwaniuk, A. N., and Saucier, D. M. (2013). Seasonal and sex differences in the hippocampus of a wild rodent. *Behav. Brain Res.* 236, 131–138. doi: 10.1016/j.bbr.2012.08.044

AUTHOR CONTRIBUTIONS

FL, MB, MMe, and MMi wrote and edited the manuscript. MB and MMe drew the figures.

ACKNOWLEDGMENTS

MMi work's was funded by the French National Research Agency (Agence Nationale pour la Recherche: SeasoNRG ANR-09-JCJC-0049-01 and HypNeurogen ANR-16-CE37-0006-01) and FL's work was funded by French National Research Agency (PLASTMATBEHAV ANR12-BSV7-0017). This work has benefited from the facilities and expertise of the cellular imaging platform (PIC), UMR PRC, INRA Centre Val de Loire, France. We thank Prof. J. Lonstein for his kind revision of the manuscript.

- Butz, M., Lehmann, K., Dammasch, I. E., and Teuchert-Noodt, G. (2006). A theoretical network model to analyse neurogenesis and synaptogenesis in the dentate gyrus. *Neural Netw.* 19, 1490–1505. doi: 10.1016/j.neunet.2006.07.007
- Butz, M., Teuchert-Noodt, G., Grafen, K., and van Ooyen, A. (2008). Inverse relationship between adult hippocampal cell proliferation and synaptic rewiring in the dentate gyrus. *Hippocampus*, 18, 879–898. doi: 10.1002/hipo.20445
- Cameron, H. A., Woolley, C. S., McEwen, B. S., and Gould, E. (1993). Differentiation of newly born neurons and glia in the dentate gyrus of the adult rat. *Neuroscience* 56, 337–344. doi: 10.1016/0306-4522(93)90335-D
- Chaker, Z., George, C., Petrovska, M., Caron, J. B., Lacube, P., Caille, I., et al. (2016). Hypothalamic neurogenesis persists in the aging brain and is controlled by energy-sensing IGF-I pathway. *Neurobiol. Aging* 41, 64–72. doi: 10.1016/j.neurobiolaging.2016.02.008
- Cheng, M. F. (2013). Hypothalamic neurogenesis in the adult brain. *Front. Neuroendocrinol.* 34, 167–178. doi: 10.1016/j.yfrne.2013.05.001
- Chojnacki, A. K., Mak, G. K., and Weiss, S. (2009). Identity crisis for adult periventricular neural stem cells: subventricular zone astrocytes, ependymal cells or both? *Nat. Rev. Neurosci.* 10, 153–163. doi: 10.1038/nrn2571
- Corona, R., Meurisse, M., Cornilleau, F., Moussu, C., Keller, M., and Levy, F. (2016). Exposure to young preferentially activates adult-born neurons in the main olfactory bulb of sheep mothers. *Brain Struct Funct.* 222, 1219–1229. doi: 10.1007/s00429-016-1272-3
- Curtis, M. A., Kam, M., Nannmark, U., Anderson, M. F., Axell, M. Z., Wikkelso, C., et al. (2007). Human neuroblasts migrate to the olfactory bulb via a lateral ventricular extension. *Science* 315, 1243–1249. doi: 10.1126/science.1136281
- Dahiya, S., Lee, D. Y., and Gutmann, D. H. (2011). Comparative characterization of the human and mouse third ventricle germinal zones. *J. Neuropathol. Exp. Neurol.* 70, 622–633. doi: 10.1097/NEN.0b013e31822200aa
- Darnaudery, M., Perez-Martin, M., Del Favero, F., Gomez-Roldan, C., Garcia-Segura, L. M., and MacCari, S. (2007). Early motherhood in rats is associated with a modification of hippocampal function. *Psychoneuroendocrinology* 32, 803–812. doi: 10.1016/j.psyneuen.2007.05.012
- Doetsch, F., Caille, I., Lim, D. A., Garcia-Verdugo, J. M., and Alvarez-Buylla, A. (1999a). Subventricular zone astrocytes are neural stem cells in the adult mammalian brain. *Cell* 97, 703–716. doi: 10.1016/S0092-8674(00)80783-7
- Doetsch, F., Garcia-Verdugo, J. M., and Alvarez-Buylla, A. (1997). Cellular composition and three-dimensional organization of the subventricular germinal zone in the adult mammalian brain. *J. Neurosci.* 17, 5046–5061.
- Doetsch, F., Garcia-Verdugo, J. M., and Alvarez-Buylla, A. (1999b). Regeneration of a germinal layer in the adult mammalian brain. *Proc. Natl. Acad. Sci. U.S.A.* 96, 11619–11624. doi: 10.1073/pnas.96.20.11619
- Ebling, F. J., and Barrett, P. (2008). The regulation of seasonal changes in food intake and body weight. *J. Neuroendocrinol.* 20, 827–833. doi: 10.1111/j.1365-2826.2008.01721.x
- Ella, A., and Keller, M. (2015). Construction of an MRI 3D high resolution sheep brain template. *Magn Reson. Imaging* 33, 1329–1337. doi: 10.1016/j.mri.2015.09.001
- Emmen, J. M., and Korach, K. S. (2003). Estrogen receptor knockout mice: phenotypes in the female reproductive tract. *Gynecol. Endocrinol.* 17, 169–176. doi: 10.1080/gye.17.2.169.176
- Emsley, J. G., Mitchell, B. D., Kempermann, G., and MacKlis, J. D. (2005). Adult neurogenesis and repair of the adult CNS with neural progenitors, precursors, and stem cells. *Prog. Neurobiol.* 75, 321–341. doi: 10.1016/j.pneurobio.2005.04.002
- Feierstein, C. E., Lazarini, F., Wagner, S., Gabellec, M. M., de Chaumont, F., Olivio-Marin, J. C., et al. (2010). Disruption of adult neurogenesis in the olfactory bulb affects social interaction but not maternal behavior. *Front. Behav. Neurosci.* 4:176. doi: 10.3389/fnbeh.2010.00176
- Fietz, S. A., Kelava, I., Vogt, J., Wilsch-Brauninger, M., Stenzel, D., Fish, J. L., et al. (2010). OSVZ progenitors of human and ferret neocortex are epithelial-like and expand by integrin signaling. *Nat. Neurosci.* 13, 690–699. doi: 10.1038/nn.2553
- Flament-Durand, J., and Brion, J. P. (1985). Tanyocytes: morphology and functions: a review. *Int. Rev. Cytol.* 96, 121–155. doi: 10.1016/S0074-7696(08)60596-3
- Forschler, A., Boltze, J., Waldmin, D., Gille, U., and Zimmer, C. (2007). [MRI of experimental focal cerebral ischemia in sheep]. *Rofo* 179, 516–524. doi: 10.1055/s-2007-962977
- Fowler, C. D., Johnson, F., and Wang, Z. (2005). Estrogen regulation of cell proliferation and distribution of estrogen receptor-alpha in the brains of adult female prairie and meadow voles. *J. Comp. Neurol.* 489, 166–179. doi: 10.1002/cne.20638
- Fowler, C. D., Liu, Y., Ouimet, C., and Wang, Z. (2002). The effects of social environment on adult neurogenesis in the female prairie vole. *J. Neurobiol.* 51, 115–128. doi: 10.1002/neu.10042
- Galea, L. A., and McEwen, B. S. (1999). Sex and seasonal differences in the rate of cell proliferation in the dentate gyrus of adult wild meadow voles. *Neuroscience* 89, 955–964. doi: 10.1016/S0306-4522(98)00345-5
- Galea, L. A., Perrot-Sinal, T. S., Kavaliers, M., and Ossenkopp, K. P. (1999). Relations of hippocampal volume and dentate gyrus width to gonadal hormone levels in male and female meadow voles. *Brain Res. Bull.* 821, 383–391. doi: 10.1016/S0006-8993(99)01100-2
- Gao, Q., and Horvath, T. L. (2008). Cross-talk between estrogen and leptin signaling in the hypothalamus. *Am. J. Physiol. Endocrinol. Metab.* 294, E817–E826. doi: 10.1152/ajpendo.00733.2007
- Gheusi, G., Ortega-Perez, I., Murray, K., and Lledo, P. M. (2009). A niche for adult neurogenesis in social behavior. *Behav. Brain Res.* 200, 315–322. doi: 10.1016/j.bbr.2009.02.006
- Gil-Perotin, S., Duran-Moreno, M., Belzunegui, S., Luquin, M. R., and Garcia-Verdugo, J. M. (2009). Ultrastructure of the subventricular zone in Macaca fascicularis and evidence of a mouse-like migratory stream. *J. Comp. Neurol.* 514, 533–554. doi: 10.1002/cne.22026
- Gonzalez-Perez, O., Chavez-Casillas, O., Jauregui-Huerta, F., Lopez-Virgen, V., Guzman-Muniz, J., Moy-Lopez, N., et al. (2011). Stress by noise produces differential effects on the proliferation rate of radial astrocytes and survival of neuroblasts in the adult subgranular zone. *Neurosci. Res.* 70, 243–250. doi: 10.1016/j.neures.2011.03.013
- Gouaze, A., Brenachot, X., Rigault, C., Krezymon, A., Rauch, C., Nedelec, E., et al. (2013). Cerebral cell renewal in adult mice controls the onset of obesity. *PLoS ONE* 8:e72029. doi: 10.1371/journal.pone.0072029
- Gritti, A., Vescovi, A. L., and Galli, R. (2002). Adult neural stem cells: plasticity and developmental potential. *J. Physiol. Paris* 96, 81–90. doi: 10.1016/S0928-4257(01)00083-3
- Guha, T. K., Wai, A., and Hausner, G. (2017). Programmable genome editing tools and their regulation for efficient genome engineering. *Comput. Struct. Biotechnol. J.* 15, 146–160. doi: 10.1016/j.csbj.2016.12.006
- Haan, N., Goodman, T., Najdi-Samiei, A., Stratford, C. M., Rice, R., El Agha, E., et al. (2013). Fgf10-expressing tanyocytes add new neurons to the appetite/energy-balance regulating centers of the postnatal and adult hypothalamus. *J. Neurosci.* 33, 6170–6180. doi: 10.1523/JNEUROSCI.2437-12.2013
- Hawken, P. A., Jorre, T. J., Rodger, J., Esmaili, T., Blache, D., and Martin, G. B. (2009). Rapid induction of cell proliferation in the adult female ungulate brain (*Ovis aries*) associated with activation of the reproductive axis by exposure to unfamiliar males. *Biol. Reprod.* 80, 1146–1151. doi: 10.1095/biolreprod.108.075341
- Hazlerigg, D. G., Wyse, C. A., Dardente, H., Hanon, E. A., and Lincoln, G. A. (2013). Photoperiodic variation in CD45-positive cells and cell proliferation in the mediobasal hypothalamus of the Soay sheep. *Chronobiol. Int.* 30, 548–558. doi: 10.3109/07420528.2012.754450
- Holmes, M. M. (2016). Social regulation of adult neurogenesis: a comparative approach. *Front. Neuroendocrinol.* 41, 59–70. doi: 10.1016/j.yfrne.2016.02.001
- Holschbach, M. A., and Lonstein, J. S. (2017). Motherhood and infant contact regulate neuroplasticity in the serotonergic midbrain dorsal raphe. *Psychoneuroendocrinology* 76, 97–106. doi: 10.1016/j.psyneuen.2016.10.023
- Hsu, P. D., Lander, E. S., and Zhang, F. (2014). Development and applications of CRISPR-Cas9 for genome engineering. *Cell* 157, 1262–1278. doi: 10.1016/j.cell.2014.05.010
- Huang, L., DeVries, G. J., and Bittman, E. L. (1998). Photoperiod regulates neuronal bromodeoxyuridine labeling in the brain of a seasonally breeding mammal. *J. Neurobiol.* 36, 410–420. doi: 10.1002/(SICI)1097-4695(19980905)36:3<410::AID-NEU8>3.0.CO;2-Z

- Imayoshi, I., Sakamoto, M., Ohtsuka, T., Takao, K., Miyakawa, T., Yamaguchi, M., et al. (2008). Roles of continuous neurogenesis in the structural and functional integrity of the adult forebrain. *Nat. Neurosci.* 11, 1153–1161. doi: 10.1038/nn.2185
- Kameda, Y., Arai, Y., and Nishimaki, T. (2003). Ultrastructural localization of vimentin immunoreactivity and gene expression in tanycytes and their alterations in hamsters kept under different photoperiods. *Cell Tissue Res.* 314, 251–262. doi: 10.1007/s00441-003-0789-y
- Kee, N., Sivalingam, S., Boonstra, R., and Wojtowicz, J. M. (2002). The utility of Ki-67 and BrdU as proliferative markers of adult neurogenesis. *J. Neurosci. Methods* 115, 97–105. doi: 10.1016/S0165-0270(02)00007-9
- Keller, M., and Lévy, F. (2012). The main but not the accessory olfactory system is involved in the processing of socially relevant chemosignals in ungulates. *Front. Neuroanat.* 6:39. doi: 10.3389/fnana.2012.00039
- Kempermann, G., Gast, D., Kronenberg, G., Yamaguchi, M., and Gage, F. H. (2003). Early determination and long-term persistence of adult-generated new neurons in the hippocampus of mice. *Development* 130, 391–399. doi: 10.1242/dev.00203
- Kohler, S. J., Williams, N. I., Stanton, G. B., Cameron, J. L., and Greenough, W. T. (2011). Maturation time of new granule cells in the dentate gyrus of adult macaque monkeys exceeds six months. *Proc. Natl. Acad. Sci. U.S.A.* 108, 10326–10331. doi: 10.1073/pnas.1017099108
- Kokoeva, M. V., Yin, H., and Flier, J. S. (2005). Neurogenesis in the hypothalamus of adult mice: potential role in energy balance. *Science* 310, 679–683. doi: 10.1126/science.1115360
- Kokoeva, M. V., Yin, H., and Flier, J. S. (2007). Evidence for constitutive neural cell proliferation in the adult murine hypothalamus. *J. Comp. Neurol.* 505, 209–220. doi: 10.1002/cne.21492
- Kopel, H., Schechtman, E., Groysman, M., and Mizrahi, A. (2012). Enhanced synaptic integration of adult-born neurons in the olfactory bulb of lactating mothers. *J. Neurosci.* 32, 7519–7527. doi: 10.1523/JNEUROSCI.6354-11.2012
- Kornack, D. R., and Rakic, P. (2001). The generation, migration, and differentiation of olfactory neurons in the adult primate brain. *Proc. Natl. Acad. Sci. U.S.A.* 98, 4752–4757. doi: 10.1073/pnas.081074998
- Kronenberg, G., Reuter, K., Steiner, B., Brandt, M. D., Jessberger, S., Yamaguchi, M., et al. (2003). Subpopulations of proliferating cells of the adult hippocampus respond differently to physiologic neurogenic stimuli. *J. Comp. Neurol.* 467, 455–463. doi: 10.1002/cne.10945
- Langlet, F., Levin, B. E., Luquet, S., Mazzone, M., Messina, A., Dunn-Meynell, A. A., et al. (2013). Tanycytic VEGF-A boosts blood-hypothalamus barrier plasticity and access of metabolic signals to the arcuate nucleus in response to fasting. *Cell Metabol.* 17, 607–617. doi: 10.1016/j.cmet.2013.03.004
- Larriva-Sahd, J. (2014). Structural variation and interactions among astrocytes of the rostral migratory stream and olfactory bulb: II. Golgi and electron microscopic study of the adult rat. *Neurosci. Res.* 89, 10–30. doi: 10.1016/j.neures.2014.08.011
- Larsen, C. M., and Grattan, D. R. (2010). Prolactin-induced mitogenesis in the subventricular zone of the maternal brain during early pregnancy is essential for normal postpartum behavioral responses in the mother. *Endocrinology* 151, 3805–3814. doi: 10.1210/en.2009-1385
- Lavenex, P., Steele, M. A., and Jacobs, L. F. (2000). The seasonal pattern of cell proliferation and neuron number in the dentate gyrus of wild adult eastern grey squirrels. *Eur. J. Neurosci.* 12, 643–648. doi: 10.1046/j.1460-9568.2000.00949.x
- Lazarini, F., and Lledo, P.-M. (2011). Is adult neurogenesis essential for olfaction? *Trends Neurosci.* 34, 20–30. doi: 10.1016/j.tins.2010.09.006
- Lee, D. A., and Blackshaw, S. (2012). Functional implications of hypothalamic neurogenesis in the adult mammalian brain. *Int. J. Dev. Neurosci.* 30, 615–621. doi: 10.1016/j.ijdevneu.2012.07.003
- Lee, D. A., Bedont, J. L., Pak, T., Wang, H., Song, J., Miranda-Angulo, A., et al. (2012). Tanycytes of the hypothalamic median eminence form a diet-responsive neurogenic niche. *Nat. Neurosci.* 15, 700–702. doi: 10.1038/nn.3079
- Lee, D. A., Salvatierra, J., Velarde, E., Wong, J., Ford, E. C., and Blackshaw, S. (2013). Functional interrogation of adult hypothalamic neurogenesis with focal radiological inhibition. *J. Vis. Exp.* 81:e50716. doi: 10.3791/50716
- Lee, D. A., Yoo, S., Pak, T., Salvatierra, J., Velarde, E., Aja, S., et al. (2014). Dietary and sex-specific factors regulate hypothalamic neurogenesis in young adult mice. *Front. Neurosci.* 8:157. doi: 10.3389/fnins.2014.00157
- Lehmann, K., Butz, M., and Teuchert-Noodt, G. (2005). Offer and demand: proliferation and survival of neurons in the dentate gyrus. *Eur. J. Neurosci.* 21, 3205–3216. doi: 10.1111/j.1460-9568.2005.04156.x
- Lemasson, M., Saghatelian, A., Olivo-Marin, J. C., and Lledo, P. M. (2005). Neonatal and adult neurogenesis provide two distinct populations of newborn neurons to the mouse olfactory bulb. *J. Neurosci.* 25, 6816–6825. doi: 10.1523/JNEUROSCI.1114-05.2005
- Leuner, B., Caponiti, J. M., and Gould, E. (2012). Oxytocin stimulates adult neurogenesis even under conditions of stress and elevated glucocorticoids. *Hippocampus* 22, 861–868. doi: 10.1002/hipo.20947
- Lévy, F., and Keller, M. (2009). Olfactory mediation of maternal behavior in selected mammalian species. *Behav. Brain Res.* 200, 336–345. doi: 10.1016/j.bbr.2008.12.017
- Lévy, F., Gheusi, G., and Keller, M. (2011). Plasticity of the parental brain: a case for neurogenesis. *J. Neuroendocrinol.* 23, 984–993. doi: 10.1111/j.1365-2826.2011.02203.x
- Lévy, F., Guevara-Guzman, R., Hinton, M. R., Kendrick, K. M., and Keverne, E. B. (1993). Effects of parturition and maternal experience on noradrenaline and acetylcholine release in the olfactory bulb of sheep. *Behav. Neurosci.* 107, 662–668. doi: 10.1037/0735-7044.107.4.662
- Lévy, F., Keller, M., and Poindron, P. (2004). Olfactory regulation of maternal behavior in mammals. *Horm. Behav.* 46, 284–302. doi: 10.1016/j.yhbeh.2004.02.005
- Li, J., Tang, Y., and Cai, D. (2012). IKKbeta/NF-kappaB disrupts adult hypothalamic neural stem cells to mediate a neurodegenerative mechanism of dietary obesity and pre-diabetes. *Nat. Cell Biol.* 14, 999–1012. doi: 10.1038/ncb2562
- Livneh, Y., and Mizrahi, A. (2011). Experience-dependent plasticity of mature adult-born neurons. *Nat. Neurosci.* 15, 26–28. doi: 10.1038/nn.2980
- Lledo, P. M., Alonso, M., and Grubb, M. S. (2006). Adult neurogenesis and functional plasticity in neuronal circuits. *Nat. Rev. Neurosci.* 7, 179–193. doi: 10.1038/nrn1867
- Lois, C., and Alvarez-Buylla, A. (1994). Long-distance neuronal migration in the adult mammalian brain. *Science* 264, 1145–1148. doi: 10.1126/science.8178174
- Low, V. F., Faull, R. L., Bennet, L., Gunn, A. J., and Curtis, M. A. (2013). Neurogenesis and progenitor cell distribution in the subgranular zone and subventricular zone of the adult sheep brain. *Neuroscience* 244, 173–187. doi: 10.1016/j.neuroscience.2013.04.006
- Luskin, M. B. (1993). Restricted proliferation and migration of postnatally generated neurons derived from the forebrain subventricular zone. *Neuron* 11, 173–189. doi: 10.1016/0896-6273(93)90281-U
- Lussier, A. L., Lebedeva, K., Fenton, E. Y., Guskjolen, A., Caruncho, H. J., and Kalynchuk, L. E. (2013). The progressive development of depression-like behavior in corticosterone-treated rats is paralleled by slowed granule cell maturation and decreased reelin expression in the adult dentate gyrus. *Neuropharmacology* 71, 174–183. doi: 10.1016/j.neuropharm.2013.04.012
- Luzzati, F., Peretto, P., Aimar, P., Ponti, G., Fasolo, A., and Bonfanti, L. (2003). Glia-independent chains of neuroblasts through the subcortical parenchyma of the adult rabbit brain. *Proc. Natl. Acad. Sci. U.S.A.* 100, 13036–13041. doi: 10.1073/pnas.1735482100
- Martin, G., Oldham, C., Cognié, Y., and Pearce, D. (1986). The physiological responses of anovulatory ewes to the introduction of rams: a review. *Livestock Prod. Sci.* 15, 219–247. doi: 10.1016/0301-6226(86)90031-X
- McDonald, H. Y., and Wojtowicz, J. M. (2005). Dynamics of neurogenesis in the dentate gyrus of adult rats. *Neurosci. Lett.* 385, 70–75. doi: 10.1016/j.neulet.2005.05.022
- McNay, D. E., Briançon, N., Kokoeva, M. V., Maratos-Flier, E., and Flier, J. S. (2012). Remodeling of the arcuate nucleus energy-balance circuit is inhibited in obese mice. *J. Clin. Invest.* 122, 142–152. doi: 10.1172/JCI43134
- Migaud, M., Batailler, M., Pillon, D., Franceschini, I., and Malpoux, B. (2011). Seasonal changes in cell proliferation in the adult sheep brain and pars tuberalis. *J. Biol. Rhythms* 26, 486–496. doi: 10.1177/0748730411420062
- Migaud, M., Batailler, M., Segura, S., Duittoz, A., Franceschini, I., and Pillon, D. (2010). Emerging new sites for adult neurogenesis in the mammalian brain: a comparative study between the hypothalamus and the classical neurogenic zones. *Eur. J. Neurosci.* 32, 2042–2052. doi: 10.1111/j.1460-9568.2010.07521.x
- Migaud, M., Buttrill, L., and Batailler, M. (2015). Seasonal regulation of structural plasticity and neurogenesis in the adult mammalian brain:

- focus on the sheep hypothalamus. *Front. Neuroendocrinol.* 37, 146–157. doi: 10.1016/j.yfrne.2014.11.004
- Miyata, S. (2015). New aspects in fenestrated capillary and tissue dynamics in the sensory circumventricular organs of adult brains. *Front. Neurosci.* 9:390. doi: 10.3389/fnins.2015.00390
- Mohr, M. A., and Sisk, C. L. (2013). Pubertally born neurons and glia are functionally integrated into limbic and hypothalamic circuits of the male Syrian hamster. *Proc. Natl. Acad. Sci. U.S.A.* 110, 4792–4797. doi: 10.1073/pnas.1219443110
- Morimoto, M., Morita, N., Ozawa, H., Yokoyama, K., and Kawata, M. (1996). Distribution of glucocorticoid receptor immunoreactivity and mRNA in the rat brain: an immunohistochemical and *in situ* hybridization study. *Neurosci. Res.* 26, 235–269. doi: 10.1016/S0168-0102(96)01105-4
- Musatov, S., Chen, W., Pfaff, D. W., Kaplitt, M. G., and Ogawa, S. (2006). RNAi-mediated silencing of estrogen receptor in the ventromedial nucleus of hypothalamus abolishes female sexual behaviors. *Proc. Natl. Acad. Sci. U.S.A.* 103, 10456–10460. doi: 10.1073/pnas.0603045103
- Ninkovic, J., and Gotz, M. (2007). Signaling in adult neurogenesis: from stem cell niche to neuronal networks. *Curr. Opin. Neurobiol.* 17, 338–344. doi: 10.1016/j.conb.2007.04.006
- Nitzsche, B., Frey, S., Collins, L. D., Seeger, J., Lobsien, D., Dreyer, A., et al. (2015). A stereotaxic, population-averaged T1w ovine brain atlas including cerebral morphology and tissue volumes. *Front. Neuroanat.* 9:69. doi: 10.3389/fnana.2015.00069
- Niwa, A., Nishibori, M., Hamasaki, S., Kobori, T., Liu, K., Wake, H., et al. (2015). Voluntary exercise induces neurogenesis in the hypothalamus and ependymal lining of the third ventricle. *Brain Struct. Funct.* 221, 1653–1666. doi: 10.1007/s00429-015-0995-x
- Ogawa, S., Eng, V., Taylor, J., Lubahn, D. B., Korach, K. S., and Pfaff, D. W. (1998). Role of estrogen receptor-alpha gene expression in reproduction-related behaviors in female mice. *Endocrinology* 139, 5070–5081. doi: 10.1210/endo.139.12.6357
- Ormerod, B. K., and Galea, L. A. (2003). Reproductive status influences the survival of new cells in the dentate gyrus of adult male meadow voles. *Neurosci. Lett.* 346, 25–28. doi: 10.1016/S0304-3940(03)00546-9
- Pagano, S. F., Impagnatiello, F., Girelli, M., Cova, L., Grioni, E., Onofri, M., et al. (2000). Isolation and characterization of neural stem cells from the adult human olfactory bulb. *Stem Cells* 18, 295–300. doi: 10.1634/stemcells.18-4-295
- Paredes, M. F., Sorrells, S. F., Garcia-Verdugo, J. M., and Alvarez-Buylla, A. (2016). Brain size and limits to adult neurogenesis. *J. Comp. Neurol.* 524, 646–664. doi: 10.1002/cne.23896
- Pawluski, J. L., Brummelte, S., Barha, C. K., Crozier, T. M., and Galea, L. A. M. (2009). Effects of steroid hormones on neurogenesis in the hippocampus of the adult female rodent during the estrous cycle, pregnancy, lactation and aging. *Front. Neuroendocrinol.* 30, 343–357. doi: 10.1016/j.yfrne.2009.03.007
- Pekcec, A., Loscher, W., and Potschka, H. (2006). Neurogenesis in the adult rat piriform cortex. *Neuroreport* 17, 571–574. doi: 10.1097/00001756-200604240-00003
- Pencea, V., Bingaman, K. D., Wiegand, S. J., and Luskin, M. B. (2001). Infusion of brain-derived neurotrophic factor into the lateral ventricle of the adult rat leads to new neurons in the parenchyma of the striatum, septum, thalamus, and hypothalamus. *J. Neurosci.* 21, 6706–6717.
- Pérez-Martín, M., Cifuentes, M., Grondona, J. M., López-Avalos, M. D., Gómez-Pinedo, U., García-Verdugo, J. M., et al. (2010). IGF-I stimulates neurogenesis in the hypothalamus of adult rats. *Eur. J. Neurosci.* 31, 1533–1548. doi: 10.1111/j.1460-9568.2010.07220.x
- Perrot-Sinal, T. S., Kavaliers, M., and Ossenkopp, K. P. (1998). Spatial learning and hippocampal volume in male deer mice: relations to age, testosterone and adrenal gland weight. *Neuroscience* 86, 1089–1099. doi: 10.1016/S0306-4522(98)00131-6
- Petreanu, L., and Alvarez-Buylla, A. (2002). Maturation and death of adult-born olfactory bulb granule neurons: role of olfaction. *J. Neurosci.* 22, 6106–6113.
- Pierce, A. A., and Xu, A. W. (2010). *De novo* neurogenesis in adult hypothalamus as a compensatory mechanism to regulate energy balance. *J. Neurosci.* 30, 723–730. doi: 10.1523/JNEUROSCI.2479-09.2010
- Poindron, P., Lévy, F., and Keller, M. (2007). Maternal responsiveness and maternal selectivity in domestic sheep and goats: the two facets of maternal attachment. *Dev. Psychobiol.* 49, 54–70. doi: 10.1002/dev.20192
- Prevot, V. (2002). Glial-neuronal-endothelial interactions are involved in the control of GnRH secretion. *J. Neuroendocrinol.* 14, 247–255. doi: 10.1046/j.0007-1331.2001.00772.x
- Quinones-Hinojosa, A., Sanai, N., Soriano-Navarro, M., Gonzalez-Perez, O., Mirzadeh, Z., Gil-Perotin, S., et al. (2006). Cellular composition and cytoarchitecture of the adult human subventricular zone: a niche of neural stem cells. *J. Comp. Neurol.* 494, 415–434. doi: 10.1002/cne.20798
- Robins, S. C., Stewart, I., McNay, D. E., Taylor, V., Giachino, C., Goetz, M., et al. (2013a). α -Tanyocytes of the adult hypothalamic third ventricle include distinct populations of FGF-responsive neural progenitors. *Nat. Commun.* 4:2049. doi: 10.1038/ncomms3049
- Robins, S. C., Trudel, E., Rotondi, O., Liu, X., Djogo, T., Kryzskaya, D., et al. (2013b). Evidence for NG2-glia derived, adult-born functional neurons in the hypothalamus. *PLoS ONE* 8:e78236. doi: 10.1371/journal.pone.0078236
- Rodriguez, E. M., Blazquez, J. L., Pastor, F. E., Pelaez, B., Pena, P., Peruzzo, B., et al. (2005). Hypothalamic tanyocytes: a key component of brain-endocrine interaction. *Int. Rev. Cytol.* 247, 89–164. doi: 10.1016/S0074-7696(05)47003-5
- Rodriguez-Perez, L. M., Perez-Martin, M., Jimenez, A. J., and Fernandez-Llebrez, P. (2003). Immunocytochemical characterisation of the wall of the bovine lateral ventricle. *Cell Tissue Res.* 314, 325–335. doi: 10.1007/s00441-003-0794-1
- Saaltink, D. J., Havik, B., Verissimo, C. S., Lucassen, P. J., and Vreugdenhil, E. (2012). Doublecortin and doublecortin-like are expressed in overlapping and non-overlapping neuronal cell population: implications for neurogenesis. *J. Comp. Neurol.* 520, 2805–2823. doi: 10.1002/cne.23144
- Saghatelian, A., Roux, P., Migliore, M., Rochefort, C., Desmaisons, D., Charneau, P., et al. (2005). Activity-dependent adjustments of the inhibitory network in the olfactory bulb following early postnatal deprivation. *Neuron* 46, 103–116. doi: 10.1016/j.neuron.2005.02.016
- Sah, R., Pritchard, L. M., Richtand, N. M., Ahlbrand, R., Eaton, K., Sallee, F. R., et al. (2005). Expression of the glucocorticoid-induced receptor mRNA in rat brain. *Neuroscience* 133, 281–292. doi: 10.1016/j.neuroscience.2005.01.066
- Sahara, S., and O'Leary, D. D. (2009). Fgf10 regulates transition period of cortical stem cell differentiation to radial glia controlling generation of neurons and basal progenitors. *Neuron* 63, 48–62. doi: 10.1016/j.neuron.2009.06.006
- Sakamoto, M., Imayoshi, I., Ohtsuka, T., Yamaguchi, M., Mori, K., and Kageyama, R. (2011). Continuous neurogenesis in the adult forebrain is required for innate olfactory responses. *Proc. Natl. Acad. Sci. U.S.A.* 108, 8479–8484. doi: 10.1073/pnas.101872108
- Sanai, N., Nguyen, T., Ihrie, R. A., Mirzadeh, Z., Tsai, H. H., Wong, M., et al. (2011). Corridors of migrating neurons in the human brain and their decline during infancy. *Nature* 478, 382–386. doi: 10.1038/nature10487
- Saper, C. B., and Lowell, B. B. (2014). The hypothalamus. *Curr. Biol.* 24, R1111–R1116. doi: 10.1016/j.cub.2014.10.023
- Sawamoto, K., Hirota, Y., Alfaro-Cervello, C., Soriano-Navarro, M., He, X. P., Hayakawa-Yano, Y., et al. (2011). Cellular composition and organization of the subventricular zone and rostral migratory stream in the adult and neonatal common marmoset brain. *J. Comp. Neurol.* 519, 690–713. doi: 10.1002/cne.22543
- Shughrue, P. J., and Merchenthaler, I. (2000). Estrogen is more than just a “sex hormone”: novel sites for estrogen action in the hippocampus and cerebral cortex. *Front. Neuroendocrinol.* 21, 95–101. doi: 10.1006/frne.1999.0190
- Shughrue, P., Scrimo, P., Lane, M., Askew, R., and Merchenthaler, I. (1997). The distribution of estrogen receptor-beta mRNA in forebrain regions of the estrogen receptor-alpha knockout mouse. *Endocrinology* 138, 5649–5652. doi: 10.1210/endo.138.12.5712
- Siopi, E., Denizet, M., Gabellec, M. M., de Chaumont, F., Olivo-Marin, J. C., Guilloux, J. P., et al. (2016). Anxiety- and depression-like states lead to pronounced olfactory deficits and impaired adult neurogenesis in mice. *J. Neurosci.* 36, 518–531. doi: 10.1523/JNEUROSCI.2817-15.2016
- Smith, D., Pedro-Botet, J., Cantuti-Castelvetri, I., Shukitt-Hale, B., Schaefer, E. J., Joseph, J., et al. (2001). Influence of photoperiod, laboratory caging and aging on plasma lipid response to an atherogenic diet among F1B hamsters. *Int. J. Neurosci.* 106, 185–194. doi: 10.3109/00207450109149748

- Sousa-Ferreira, L., de Almeida, L. P., and Cavadas, C. (2014). Role of hypothalamic neurogenesis in feeding regulation. *Trends Endocrinol. Metab.* 25, 80–88. doi: 10.1016/j.tem.2013.10.005
- Spalding, K. L., Bergmann, O., Alkass, K., Bernard, S., Salehpour, M., Huttner, H. B., et al. (2013). Dynamics of hippocampal neurogenesis in adult humans. *Cell* 153, 1219–1227. doi: 10.1016/j.cell.2013.05.002
- Staffend, N. A., Mohr, M. A., DonCarlos, L. L., and Sisk, C. L. (2014). A decrease in the addition of new cells in the nucleus accumbens and prefrontal cortex between puberty and adulthood in male rats. *Dev. Neurobiol.* 74, 633–642. doi: 10.1002/dneu.22160
- Steiner, B., Kronenberg, G., Jessberger, S., Brandt, M. D., Reuter, K., and Kempermann, G. (2004). Differential regulation of gliogenesis in the context of adult hippocampal neurogenesis in mice. *Glia* 46, 41–52. doi: 10.1002/glia.10337
- Suh, H., Consiglio, A., Ray, J., Sawai, T., D'Amour, K. A., and Gage, F. H. (2007). *In vivo* fate analysis reveals the multipotent and self-renewal capacities of Sox2(+) neural stem cells in the adult hippocampus. *Cell Stem Cell* 1, 515–528. doi: 10.1016/j.stem.2007.09.002
- Tanapat, P., Hastings, N. B., and Gould, E. (2005). Ovarian steroids influence cell proliferation in the dentate gyrus of the adult female rat in a dose- and time-dependent manner. *J. Comp. Neurol.* 481, 252–265. doi: 10.1002/cne.20385
- Tanapat, P., Hastings, N. B., Reeves, A. J., and Gould, E. (1999). Estrogen stimulates a transient increase in the number of new neurons in the dentate gyrus of the adult female rat. *J. Neurosci.* 19, 5792–5801.
- Tonchev, A. B., and Yamashima, T. (2006). Differential neurogenic potential of progenitor cells in dentate gyrus and CA1 sector of the postschismic adult monkey hippocampus. *Exp. Neurol.* 198, 101–113. doi: 10.1016/j.expneurol.2005.11.022
- Vadodaria, K. C., and Gage, F. H. (2014). SnapShot: adult hippocampal neurogenesis. *Cell* 156, 1114–1114. doi: 10.1016/j.cell.2014.02.029
- van der Bom, I. M., Moser, R. P., Gao, G., Mondo, E., O'Connell, D., Gounis, M. J., et al. (2013). Finding the striatum in sheep: use of a multi-modal guided approach for convection enhanced delivery. *J. Huntingtons Dis.* 2, 41–45. doi: 10.3233/JHD-130053
- Walton, J. C., Pyter, L. M., Weil, Z. M., and Nelson, R. J. (2012). Photoperiod mediated changes in olfactory bulb neurogenesis and olfactory behavior in male white-footed mice (*Peromyscus leucopus*). *PLoS ONE* 7:e42743. doi: 10.1371/journal.pone.0042743
- Wang, C., Liu, F., Liu, Y. Y., Zhao, C. H., You, Y., Wang, L., et al. (2011). Identification and characterization of neuroblasts in the subventricular zone and rostral migratory stream of the adult human brain. *Cell Res.* 21, 1534–1550. doi: 10.1038/cr.2011.83
- Wei, L. C., Shi, M., Chen, L. W., Cao, R., Zhang, P., and Chan, Y. S. (2002). Nestin-containing cells express glial fibrillary acidic protein in the proliferative regions of central nervous system of postnatal developing and adult mice. *Brain Res. Dev. Brain Res.* 139, 9–17. doi: 10.1016/S0165-3806(02)00509-6
- Werner, L., Müller-Fielitz, H., Ritzal, M., Werner, T., Rossner, M., and Schwaninger, M. (2012). Involvement of doublecortin-expressing cells in the arcuate nucleus in body weight regulation. *Endocrinology* 153, 2655–2664. doi: 10.1210/en.2011-1760
- Wiese, C., Rolletschek, A., Kania, G., Blyszczuk, P., Tarasov, K. V., Tarasova, Y., et al. (2004). Nestin expression—a property of multi-lineage progenitor cells? *Cell. Mol. Life Sci.* 61, 2510–2522. doi: 10.1007/s00018-004-4144-6
- Winner, B., Cooper-Kuhn, C. M., Aigner, R., Winkler, J., and Kuhn, H. G. (2002). Long-term survival and cell death of newly generated neurons in the adult rat olfactory bulb. *Eur. J. Neurosci.* 16, 1681–1689. doi: 10.1046/j.1460-9568.2002.02238.x
- Xu, Y., Tamamaki, N., Noda, T., Kimura, K., Itokazu, Y., Matsumoto, N., et al. (2005). Neurogenesis in the ependymal layer of the adult rat 3rd ventricle. *Exp. Neurol.* 192, 251–264. doi: 10.1016/j.expneurol.2004.12.021
- Yon, M. A., Mauger, S. L., and Pickavance, L. C. (2013). Relationships between dietary macronutrients and adult neurogenesis in the regulation of energy metabolism. *Br. J. Nutr.* 109, 1573–1589. doi: 10.1017/S000711451200579X
- Yuan, T. F., and Arias-Carrion, O. (2011). Adult neurogenesis in the hypothalamus: evidence, functions, and implications. *CNS Neurol. Disord. Drug Targets* 10, 433–439. doi: 10.2174/187152711795563985
- Zhang, G., Li, J., Purkayastha, S., Tang, Y., Zhang, H., Yin, Y., et al. (2013). Hypothalamic programming of systemic ageing involving IKK-beta, NF-kappaB and GnRH. *Nature* 497, 211–216. doi: 10.1038/nature12143
- Zhao, M., and Janson Lang, A. M. (2009). Bromodeoxyuridine infused into the cerebral ventricle of adult mice labels nigral neurons under physiological conditions—a method to detect newborn nerve cells in regions with a low rate of neurogenesis. *J. Neurosci. Methods* 184, 327–331. doi: 10.1016/j.jneumeth.2009.08.007

Conflict of Interest Statement: The authors declare that the research was conducted in the absence of any commercial or financial relationships that could be construed as a potential conflict of interest.

Copyright © 2017 Lévy, Batailler, Meurisse and Migaud. This is an open-access article distributed under the terms of the Creative Commons Attribution License (CC BY). The use, distribution or reproduction in other forums is permitted, provided the original author(s) or licensor are credited and that the original publication in this journal is cited, in accordance with accepted academic practice. No use, distribution or reproduction is permitted which does not comply with these terms.