



**HAL**  
open science

## A high-quality grapevine downy mildew genome assembly reveals rapidly evolving and lineage-specific putative host adaptation genes

Yann Dussert, Isabelle D. Mazet, Carole Couture, Jerome Gouzy, Marie-Christine Piron, Claire Kuchly, Olivier Bouchez, Claude Rispé, Pere Mestre, François Delmotte

### ► To cite this version:

Yann Dussert, Isabelle D. Mazet, Carole Couture, Jerome Gouzy, Marie-Christine Piron, et al.. A high-quality grapevine downy mildew genome assembly reveals rapidly evolving and lineage-specific putative host adaptation genes. *Genome Biology and Evolution*, 2019, 11 (3), pp.954-969. 10.1093/gbe/evz048 . hal-02628726

**HAL Id: hal-02628726**

**<https://hal.inrae.fr/hal-02628726>**

Submitted on 26 May 2020

**HAL** is a multi-disciplinary open access archive for the deposit and dissemination of scientific research documents, whether they are published or not. The documents may come from teaching and research institutions in France or abroad, or from public or private research centers.

L'archive ouverte pluridisciplinaire **HAL**, est destinée au dépôt et à la diffusion de documents scientifiques de niveau recherche, publiés ou non, émanant des établissements d'enseignement et de recherche français ou étrangers, des laboratoires publics ou privés.



Distributed under a Creative Commons Attribution 4.0 International License

# A High-Quality Grapevine Downy Mildew Genome Assembly Reveals Rapidly Evolving and Lineage-Specific Putative Host Adaptation Genes

Yann Dussert<sup>1,\*</sup>, Isabelle D. Mazet<sup>1</sup>, Carole Couture<sup>1</sup>, Jérôme Gouzy<sup>2</sup>, Marie-Christine Piron<sup>3</sup>, Claire Kuchly<sup>4</sup>, Olivier Bouchez<sup>4</sup>, Claude Rispé<sup>5</sup>, Pere Mestre<sup>3</sup>, and François Delmotte<sup>1</sup>

<sup>1</sup>SAVE, INRA, Bordeaux Sciences Agro, Villenave d'Ornon, France

<sup>2</sup>LIPM, INRA, Université de Toulouse, CNRS, Castanet-Tolosan, France

<sup>3</sup>SVQV, INRA, Université de Strasbourg, Colmar, France

<sup>4</sup>US 1426 GeT-PlaGe, Genotoul, INRA, Castanet-Tolosan, France

<sup>5</sup>BIOEPAR, INRA, Oniris, Nantes, France

\*Corresponding author: E-mail: dussert.yann@gmail.com.

Accepted: March 5, 2019

**Data deposition:** Raw reads and genome assemblies have been deposited in GenBank (BioProjects PRJNA329579 for *Pl. viticola* and PRJNA448661 for *Pl. muralis*). Genome assemblies, gene annotations and analysis files (e.g., orthology relationships, full tables for GO enrichment analyses, pairwise dN/dS values, and branch-site tests) have been deposited in Dataverse (*Pl. viticola* assembly and annotation: doi.org/10.15454/4NYHD6, *Pl. muralis* assembly and annotation: doi.org/10.15454/Q1QJYK, analysis files: doi.org/10.15454/8NZ8X9). Links to the data and information about the grapevine downy mildew genome project can be found at <http://grapevine-downy-mildew-genome.com/>.

## Abstract

Downy mildews are obligate biotrophic oomycete pathogens that cause devastating plant diseases on economically important crops. *Plasmopara viticola* is the causal agent of grapevine downy mildew, a major disease in vineyards worldwide. We sequenced the genome of *Pl. viticola* with PacBio long reads and obtained a new 92.94 Mb assembly with high contiguity (359 scaffolds for a N50 of 706.5 kb) due to a better resolution of repeat regions. This assembly presented a high level of gene completeness, recovering 1,592 genes encoding secreted proteins involved in plant–pathogen interactions. *Plasmopara viticola* had a two-speed genome architecture, with secreted protein-encoding genes preferentially located in gene-sparse, repeat-rich regions and evolving rapidly, as indicated by pairwise dN/dS values. We also used short reads to assemble the genome of *Plasmopara muralis*, a closely related species infecting grape ivy (*Parthenocissus tricuspidata*). The lineage-specific proteins identified by comparative genomics analysis included a large proportion of RxLR cytoplasmic effectors and, more generally, genes with high dN/dS values. We identified 270 candidate genes under positive selection, including several genes encoding transporters and components of the RNA machinery potentially involved in host specialization. Finally, the *Pl. viticola* genome assembly generated here will allow the development of robust population genomics approaches for investigating the mechanisms involved in adaptation to biotic and abiotic selective pressures in this species.

**Key words:** long reads, oomycete, PacBio, plant–pathogen interactions, *Plasmopara viticola*.

## Introduction

Oomycetes are eukaryotic organisms with fungus-like characteristics. They belong to the Stramenopiles, which also include diatoms and brown algae. Oomycetes are distributed worldwide, and comprise marine, freshwater and terrestrial organisms, the most frequently studied of which are plant and

animal pathogens (Thines and Kamoun 2010). These pathogens cause many diseases of economic and ecological importance. The most notorious examples include saprolegniosis in freshwater fishes, potato late blight, sudden oak death, white rust, and downy mildew in a large number of plant species. Oomycetes have a large range of lifestyles, including obligate

© The Author(s) 2019. Published by Oxford University Press on behalf of the Society for Molecular Biology and Evolution.

This is an Open Access article distributed under the terms of the Creative Commons Attribution License (<http://creativecommons.org/licenses/by/4.0/>), which permits unrestricted reuse, distribution, and reproduction in any medium, provided the original work is properly cited.

biotrophy (Thines and Kamoun 2010), a parasitic relationship in which the pathogen extracts nutrients from the living tissues of its host. An understanding of the virulence mechanisms of oomycete pathogens and of the ways in which they adapt to their hosts is the key to developing sustainable control strategies. Several oomycete genome sequences have already been published, for species from the genus *Saprolegnia* (Jiang et al. 2013), white rusts (Kemen et al. 2011; McMullan et al. 2015), the genus *Pythium* (Lévesque et al. 2010; Adhikari et al. 2013), the genus *Phytophthora* (Tyler et al. 2006; Haas et al. 2009; Lamour et al. 2012; Liu et al. 2016), and downy mildews (Baxter et al. 2010; Derevnina et al. 2015; Sharma et al. 2015; Kobayashi et al. 2017; Fletcher et al. 2018). These abundant genomic data for oomycetes have provided opportunities to improve our understanding of the evolutionary processes linked to pathogenic lifestyles. For example, it has made it possible to identify genes lost following the adaptation to obligate biotrophy (Baxter et al. 2010; Kemen et al. 2011) and novel effector families involved in the manipulation of plant defenses (Bozkurt et al. 2012), and has given rise to the “two-speed genome” concept for filamentous plant pathogens (Dong et al. 2015).

*Plasmopara viticola*, an obligate biotrophic and heterothallic (i.e., sexual reproduction requires individuals with different mating types) diploid oomycete, is the causal agent of downy mildew on grapevine (species of the Vitaceae family). It is endemic to North America and was introduced into Europe in the late 1870s (Fontaine et al. 2013). This pathogen is now found on cultivated grapevine (*Vitis vinifera*) worldwide, and downy mildew is considered to be one of the most important diseases of grapevine. *Plasmopara viticola* has recently been shown to form a complex of host-specialized species on wild *Vitis* in North America (Rouxel et al. 2013, 2014). The development of microsatellite markers for *Pl. viticola* over the last decade has led to improvements in our understanding of the genetic diversity, epidemiology (Gobbin et al. 2005, 2006), and invasion history of this species in Europe (Fontaine et al. 2013). *Plasmopara viticola* has a strong adaptive potential, as demonstrated by the rapid emergence of fungicide resistances in this species (reviewed in Delmas et al. 2017) and of the recent erosion of plant partial resistances (Delmas et al. 2016). Resources for population genetics studies based on genome-wide diversity, and notably a highly contiguous reference genome assembly, are required to decipher the processes involved in this rapid adaptation, but such tools are currently lacking.

Upon infection, oomycetes secrete effector proteins, which modify host metabolism and defenses for the benefit of the pathogen. Effectors are described as apoplastic when they act in the extracellular space of the plant, and as cytoplasmic when translocated into the plant cell. RxLR effectors are the most widely studied class of cytoplasmic effectors (Bozkurt et al. 2012). Candidate apoplastic and cytoplasmic effectors have been described for *Pl. viticola* (Yin et al. 2015; Mestre

et al. 2012, 2016; Xiang et al. 2017) and several genes encoding RxLR effectors have recently been functionally characterized (Xiang et al. 2016, 2017; Liu et al. 2018). However, the role of these proteins in infection and adaptation to the host remains unclear. Genomic resources for *Pl. viticola* are required to improve our understanding of the genetic mechanisms underlying plant–pathogen interactions in this pathosystem and their coevolution. Recent years have seen the publication of various transcriptomes (Yin et al. 2015; Mestre et al. 2016) and draft genome sequences based on short-read sequencing (Dussert et al. 2016; Yin et al. 2017; Brilli et al. 2018). Unfortunately, these assemblies have low completeness scores and remain fragmented.

We produced a high-quality assembly of the *Pl. viticola* genome with PacBio long-read technology, which we used to characterize more extensively the repertoire of pathogenicity-related genes in this species. We also used short reads to assemble the first genome for *Plasmopara muralis*, a phylogenetically close species that infects members of the Vitaceae family such as *Parthenocissus quinquefolia* and *Parthenocissus tricuspidata*. We used these sequences and available oomycete genome sequences for a comparative genomics analysis, which identified gene families absent from all biotrophic oomycete species. Finally, we performed several tests to identify genes potentially under positive selection and involved in the adaptation of *Pl. viticola* and *Pl. muralis* to their hosts.

## Materials and Methods

### Preparation of the Material and DNA Extraction

Sporangia from the sequenced *Pl. viticola* isolate (INRA-PV221) were previously collected for the assembly of a draft genome sequence (Dussert et al. 2016). This isolate belongs to clade B (*Pl. viticola* f. sp. *aestivalis*), as defined by Rouxel et al. (2013). Detached grapevine leaves from *V. vinifera* cv. Cabernet-Sauvignon plants were disinfected with 65% calcium hypochlorite (50 g/l), washed with sterilized water and infected with fresh sporangia (the inoculum also contained 5 g/l ampicillin, 1 g/l ticarcillin–clavulanate, and 1 g/l boscalid). The plants were placed in a growth chamber for 5–7 days at 22°C (12 h light/12 h dark photoperiod). We then collected sporangiophores and sporangia in TE buffer (10 mM Tris–HCl, 1 mM EDTA). The suspension was centrifuged (20,000× g, 4°C), the supernatant was removed and the pellet was stored at –80 °C. Genomic DNA was extracted with a CTAB procedure, according to the protocol of Cheeseman et al. (2014), but with an additional ethanol precipitation step. The extracted DNA was quantified with a Qubit fluorometer (Invitrogen), and sequenced with a PacBio RS II (Pacific Biosciences) sequencer using P6–C4 chemistry (GeT–PlaGe facility, Toulouse, France).

*Plasmopara muralis* infects *Parthenocissus quinquefolia* in North America (Rouxel et al. 2014) and is also found on grape

ivy (*Parthenocissus tricuspidata*) in Europe (Thines 2011). Sporangiohores and sporangia were collected from *Pl. muralis* isolate INRA-PM001 growing on the leaves of a *Parthenocissus tricuspidata* plant in Villenave d'Ornon, France. Genomic DNA was extracted with a standard CTAB protocol, as described by Delmotte et al. (2006), and sent to Beckman Coulter Genomics (Grenoble, France) for sequencing on an Illumina HiSeq 2000 sequencer (2×100 bp paired-end reads).

### RNA Extraction and Sequencing

Leaves of *V. vinifera* cv. Muscat Ottonel were inoculated with *Pl. viticola* isolate INRA-PV221, as described by Mestre et al. (2012). Infection was checked 24, 48, and 72 h post-inoculation (hpi), by observation under a microscope, and leaves for these three time points were snap-frozen in liquid nitrogen and stored at  $-80^{\circ}\text{C}$ . For each time point, three biological repetitions, with different batches of plants and inoculum, were performed. Total RNA was extracted by CTAB/phenol-chloroform extraction followed by LiCl precipitation (Zeng and Yang 2002). Residual genomic DNA was removed by DNase treatment with the Ambion Turbo DNA-free kit. RNA quality was checked with an Agilent BioAnalyzer. RNA-seq libraries were constructed from 4  $\mu\text{g}$  of total RNA with the Illumina TruSeq kit. Sequencing was performed at the GeT-PlaGe facility (Toulouse, France) on an Illumina HiSeq 2000 sequencer (2×100 bp paired-end reads) for samples at 24 and 48 hpi and on an Illumina HiSeq 3000 sequencer (2×150 bp) for samples at 72 hpi, producing a mean of 38 million paired-end reads per sample.

### Genome Assemblies

The PBcR wgs8.3rc2 assembly pipeline (Berlin et al. 2015) was used for read correction and assembly of the corrected reads. Corrected reads were also assembled with FALCON (Chin et al. 2016). Despite parameter tuning, the preliminary version of FALCON-Unzip (downloaded in April 2016) was unable to generate haplotypes and the FALCON assemblies were less comprehensive than our best PBcR assembly. However, the PBcR assembly was about twice the expected size of the genome due to the high degree of heterozygosity. We eliminated redundancy in the assembly with an ad hoc procedure, and used the FALCON assembly to scaffold the PBcR contigs. The assembly was then polished with Pilon 1.20 (Walker et al. 2014), for which outputs were modified using custom scripts. Details of the assembly, redundancy removal, and polishing procedures are available in the [supplementary note, Supplementary Material](#) online.

The *Pl. muralis* genome was assembled with SPAdes 3.9.0 (Bankevich et al. 2012), using a custom procedure to discard contaminants ([supplementary note, Supplementary Material](#) online). Only scaffolds of more than 1 kb in length were

retained. The median read coverage for the final assembly was 120×.

### Genome Annotation

#### Repeat Annotation

Repeated sequences in the two genomes were annotated with REPET 2.2 (Quesneville et al. 2005; Flutre et al. 2011): *De novo* libraries of repeated sequences were built with the TEdenovo pipeline (default parameters except minNbSeqPerGroup: 5 and no structural search), and genomes were annotated with the TEannot pipeline (default parameters, with the procedure recommended on the software website). Repeated elements from the Repbase20.05 database were also aligned to genome sequences during this step, but were used only to softmask sequences for gene prediction and not for other analyses.

#### Gene Prediction

For *Pl. viticola*, RNA-seq reads were aligned against the genome with STAR 2.4 (Dobin et al. 2013) then assembled *de novo* into transcripts with Trinity release 20140717 (Grabherr et al. 2011), using a genome-guided approach. Genes were predicted with BRAKER 1.8 (Hoff et al. 2016), with the aligned RNA-seq reads, and MAKER 2.31 (Holt and Yandell 2011), with the assembled transcripts and proteomes of nine other oomycete species as evidence. For *Pl. muralis*, for which no RNA data were available, genes were predicted with MAKER, using gene predictor software trained with the *Pl. viticola* proteome. Details are available in the [supplementary note, Supplementary Material](#) online.

For the two predicted proteomes, we filtered out proteins with functional domains of transposable elements detected with InterProScan 5 (Jones et al. 2014) or for which hits were obtained with TransposonPSI (<http://transposonpsi.sourceforge.net>; last accessed July 31, 2017; 30% coverage, e-value  $<1\text{e}^{-10}$ ).

#### Quality Control

The quality of genome assemblies and gene annotations was assessed with BUSCO 2.0 (Simão et al. 2015), using the Alveolata–Stramenopiles data set. Comparison of the k-mer content between the self-corrected PacBio reads and the resulting *Pl. viticola* genome assembly was carried out using KAT (Mapleson et al. 2016) with a k-mer size of 21. The *Pl. viticola* long-read assembly was aligned against the previously published draft assembly for the same isolate (Dussert et al. 2016) with the SynMap tool (Lyons et al. 2008) from CoGe (Lyons and Freeling 2008) with default parameters, and the results were visualized with Circos (Krzywinski et al. 2009). We also used QUAST 2.3 (Gurevich et al. 2013) to compare the annotated PacBio assembly (used as a reference) with the previous draft.

### Protein Functional Annotation and Secretome Characterization

Functional annotation of the proteome and gene ontology (GO) term mapping were performed with Blast2Go PRO 4.1.5 (Gotz et al. 2008), using results from BLASTP+ (-evalue  $1e^{-5}$  -max\_hsp 20 -num\_alignment 20) with the NCBI nr database and from InterProScan. For the identification of putatively secreted proteins, we first discarded proteins predicted by TargetP 1.1 (Emanuelsson et al. 2000) to have a mitochondrial targeting peptide (RC value between 1 and 3). The remaining proteins were analyzed with TMHMM 2.0 (Krogh et al. 2001), retaining only those with no transmembrane domain or a single transmembrane domain in the first 70 amino acids. Finally, SignalP 4 was used to detect signal peptides in the remaining proteins (Petersen et al. 2011).

One of the most widely studied families of secreted effectors in *Phytophthora* species and downy mildews has a conserved N-terminal RxLR (Arg–X–Leu–Arg) domain, often followed by a dEER (Asp–Glu–Glu–Arg) motif. We searched for candidate effector RxLR proteins in each secretome, using the Galaxy workflow of Cock et al. (2013): Genes identified as putative effectors by the method described by Win et al. (2007), based on regular expression searches, and either of the two methods described by Whisson et al. (2007), based on regular expressions and a HMM profile, were retained. These candidates were used as queries in high-stringency (-evalue  $1e^{-30}$ ) BLASTP searches against the respective *Plasmopara* proteomes. The sequences of the proteins identified as BLAST hits were aligned, and those with clear RxLR and/or dEER motifs at the expected positions were retained. In parallel, secretomes were used as queries in a low-stringency (-evalue  $1e^{-5}$ ) BLASTP search against a database of oomycete RxLR effectors, and BLAST hits were considered as candidates. Finally, candidate effector genes were subjected to a structural homology analysis with Phyre2 (Kelley et al. 2015). Proteins with high-confidence (100%) structural homology to proteins with known functions but lacking RxLR and/or dEER motifs at the expected positions were considered to be false-positives and were discarded. The WY-motif, a conserved structural fold, is often found in RxLR proteins (Boutemy et al. 2011). We searched for this motif in secreted proteins with HMMER 3.1b2 (available at hmmer.org; last accessed December 19, 2017), using the HMM profile from Boutemy et al. (2011), with the same domain score cutoff of 0. For proteins with WY motifs not detected as putative RxLR effectors, amino acid sequences were aligned with MAFFT 7 (Kato and Standley 2013), and sequence logos from these alignments were generated using WebLogo 2.8.2 (Crooks et al. 2004).

The secretomes of the two species were tested for enrichment in GO terms for the “biological process” and “molecular function” ontologies with the topGO package (Alexa and Rahnenfuhrer 2016) in R (R Core Team 2017). We used Fisher’s exact test with the “elim” algorithm, which

takes into account local dependencies between GO terms (Alexa et al. 2006). With this algorithm, tests for different GO terms are not independent, and a classical false discovery rate (FDR) approach (Storey and Tibshirani 2003) is not applicable. We followed the procedure of Daub et al. (2013), using modified R code from this paper, to calculate the empirical FDR with 200 permutations of the gene label (secreted/not secreted), and we reported GO terms with an FDR <10%.

### Genome Characteristics and Architecture

The size of coding sequences, coding exons and introns, and the number of exons were determined with GenomeTools (Gremme et al. 2013). The RNA-seq read count for *Pl. viticola* genes in each library was calculated with htseq-count from HTseq 0.6.1p1 (Anders et al. 2015), and read counts per million (CPM) were computed with R. A gene was considered to be supported by RNA data if its CPM value was at 1 or more in at least one biological replicate. Depending on the library, only 0.03–4.04% of reads were mapped onto the genome, so we decided not to perform differential gene expression analysis with these data.

For *Pl. viticola*, Illumina paired-end reads from a previous genome draft (and used for sequence correction, see [supplementary note, Supplementary Material](#) online) were aligned against the new assembly with BWA (Li and Durbin 2009). Heterozygous sites were then detected with VARSCAN 2.3 (Koboldt et al. 2012) (-min-coverage 20 -min-reads2 10 -min-avg-qual 15 -min-var-freq 0.2 -P-value 0.01). Sites with a read coverage more than 1.5 times the mean genome coverage were discarded. Using BEDtools 2.25 (Quinlan and Hall 2010), we determined the proportion of heterozygous sites, gene density, repeat coverage and GC content for genomic windows of 100 kb, and visualized the results with Circos. This analysis was not carried out with *Pl. muralis*, because the genome assembly was too fragmented.

The genome architecture of the two species was characterized by assessing local gene density (Saunders et al. 2014). For each gene, the 5’ and 3’ intergenic distances were calculated, and the gene count for 2D distance bins was plotted as a heatmap in R. Genes located at the scaffold extremities were not taken into account for this analysis. The distance between genes and their closest repeat sequence (not allowing for overlaps) was calculated with BEDtools. Additionally, distances to the closest gene and to the closest repeat sequence were compared between gene categories (i.e., secreted and nonsecreted, core, and specific) using a Wilcoxon rank-sum test in R. We investigated the possible relationship between intergenic distance and the orientation of adjacent gene pairs, by classifying adjacent gene pairs as oriented head-to-head (HH, adjacent pairs oriented  $\leftarrow \rightarrow$ ), tail-to-tail (TT,  $\rightarrow \leftarrow$ ), or tail-to-head (TH,  $\rightarrow \rightarrow$  or  $\leftarrow \leftarrow$ ). The observed proportions of gene pairs in the different orientations were compared with the proportions expected by

chance (0.25 for HH and TT, 0.50 for TH) using a  $\chi^2$  test performed in R.

### Comparative Genomics with Other Oomycetes

Gene synteny between the genomes of *Pl. viticola* and *Pl. muralis*, *Pl. halstedii*, *Ph. infestans*, and *Py. ultimum* was assessed with SynMap (merging of syntenic blocks with Quota Align Merge, syntenic depth 1:1) from CoGe, and visualized with Circos. Orthology relationships for the genes of *Pl. viticola*, *Pl. muralis*, and 19 other oomycetes from the orders Peronosporales, Pythiales, Albuginales, and Saprolegniales and including five other obligate biotrophic species (supplementary table 1, Supplementary Material online) were determined with OrthoFinder 1.1.2 (Emms and Kelly 2015). The results were visualized with the R package UpSetR (Conway et al. 2017) for various species groups. GO enrichment analyses were carried out for genes absent from all biotrophs as described above, using the GO annotation for nine species available from the UniProt database (supplementary table 1, Supplementary Material online). The Kyoto Encyclopedia of Genes and Genomes (KEGG) annotation of the *Ph. infestans* proteome, available through the KEGG API, was also used to predict the function of orthologs missing from all biotrophs and the biological pathways they are involved into.

The amino acid sequences of single-copy genes detected in all oomycetes in the orthology analysis were aligned with MAFFT 7. Alignments were cleaned with GBLOCKS (Castresana 2000) with default parameters and concatenated, discarding protein alignments extending over less than 50 positions. The concatenated alignment was used to infer a phylogeny for the species considered with PhyML 3 (Guindon et al. 2010), available from <http://www.atgc-montpellier.fr/phyml-sms> (last accessed September 15, 2017), with automatic selection of the substitution model with SMS (Lefort et al. 2017) and 100 bootstraps.

### Detection of Positive Selection

To detect genes with a high substitution rate in *Pl. viticola* and *Pl. muralis*, we computed pairwise  $dN/dS$  values between pairs of orthologs from the two species. Pairs of orthologs were identified by the reciprocal best hits (RBH) method with BLASTP+ (-evalue  $1e^{-6}$  -qcov\_hsp\_perc 50, min. identity 40%) and using the Smith–Waterman algorithm, as suggested by Moreno-Hagelsieb and Latimer (2008). The nucleotide sequences of RBH pairs were aligned with MUSCLE 3.8.31 (Edgar 2004), using protein alignments as guides, and poorly aligned regions were removed with GBLOCKS, trimming only entire codons ( $-t=c$   $-b3=6$   $-b4=9$ ). Alignments of less than 120 bp in length were discarded, and pairwise  $dN/dS$  values were calculated with codeml (runmode = -2) in PAML 4.8 (Yang 2007). Pairs of orthologs with  $dS$  values greater than 3 and  $dN/dS$  values of 99 were

discarded (final data set: 9,053 pairs of orthologs). Mean pairwise  $dN/dS$  values for different gene categories (e.g., non-secreted and secreted genes, or core and specific genes) were compared in  $t$  tests, assuming unequal variance, in R.

The pairwise  $dN/dS$  approach makes it possible to analyze large numbers of pairs of orthologs and to include genes specific to *Pl. viticola* and *Pl. muralis*, but has some drawbacks. First, focusing on gene pairs with a pairwise  $dN/dS > 1$  as a signature of positive selection is not a very sensitive approach, because pairwise  $dN/dS$  values provide an average estimate of selective pressure over the whole gene. Indeed, whereas most sites in most proteins are probably subject to strong evolutionary constraints, some proteins may have specific regions or sites under positive selection that remain undetected in the pairwise approach because their overall ratio is below 1. In addition, a high pairwise  $dN/dS$  value may indicate that the protein evolved rapidly in one or both species. We obtained a more precise assessment of rate changes in the various evolutionary branches and between sites, by carrying out a branch-site test (Zhang et al. 2005) to detect positive selection affecting a subset of sites in a particular lineage. This analysis was performed with data from six species: *Pl. viticola*, *Pl. muralis*, *Pl. halstedii*, *Ph. infestans*, *Ph. nicotianae*, and *Ph. capsici*. Orthology relationships for the genes of the six species were determined with OrthoFinder, retaining only single-copy orthologs (resulting in 4,042 ortholog groups). For each ortholog group, nucleotide sequences were aligned and cleaned as described for the pairwise  $dN/dS$  computation, resulting in a final data set of 4,017 ortholog groups. Positive selection was tested separately for the *Pl. viticola* and *Pl. muralis* branches. The likelihoods of the null (no selection) and alternative (positive selection) models were calculated with codeml (model = 2, NSsites = 2). For the alternative model, three runs with different starting values for omega (0.5, 1, and 1.5) were performed, and the run with the highest likelihood was retained. The two models were compared in a likelihood-ratio test in R, with the test statistic following a  $\chi^2$  distribution with 1 degree of freedom.  $P$ -values were corrected for multiple testing by the FDR procedure in the R package qvalue (Dabney et al. 2015), and we retained genes with an FDR < 10%. GO enrichment analyses for genes with a significant positive selection signal were performed as described above.

## Results and Discussion

### A New High-Quality *Pl. viticola* Genome Assembly

The PacBio sequencing of *Pl. viticola* isolate INRA-PV221 produced 2.6 million reads (mean size: 8,072 bp, total data: 21.2 Gb). The genome size of *Pl. viticola* has been estimated at about 115 Mb (Voglmaier and Greilhuber 1998), so the amount of data obtained corresponded to a mean sequencing depth of 185 $\times$ . The use of long reads at high coverage,

**Table 1**

Assembly and Annotation Statistics for the Genomes of *Plasmopara viticola* and *Plasmopara muralis*

	<i>Pl. viticola</i>	<i>Pl. muralis</i>
<b>Assembly</b>		
Assembly size (Mb)	92.94	59.54
Number of scaffolds	358	1,437
N50 (size in kb/count)	706.5/38	184.5/101
Max. scaffold size (Mb)	2.85	1.03
% GC	44.85	44.29
% of repeat elements	37.34	10.43
BUSCO genome [S/D/F] (%)	95.7 [93.6/1.7/0.4]	95.8 [94.9/0.0/0.9]
<b>Gene annotation</b>		
Number of genes	15,960	12,194
BUSCO proteome [S/D/F] (%)	97.4 [94.0/3.0/0.4]	93.6 [93.2/0.0/0.4]
Median coding sequence length [range] (bp)	957 [105–40,497]	999 [99–41,409]
Median exon length [range] (bp)	237 [1–14,776]	207 [1–14,941]
Median exon number [range] (bp)	2 [1–33]	2 [1–35]
Median intron length [range] (bp)	67 [4–3,288]	66 [4–3,991]
Number of single exon genes	7,454	4,602

NOTE.—BUSCO analyses have been carried out with the Alveolata–Stramenopiles data set.

S, single copy; D, duplicated; F, fragmented genes.

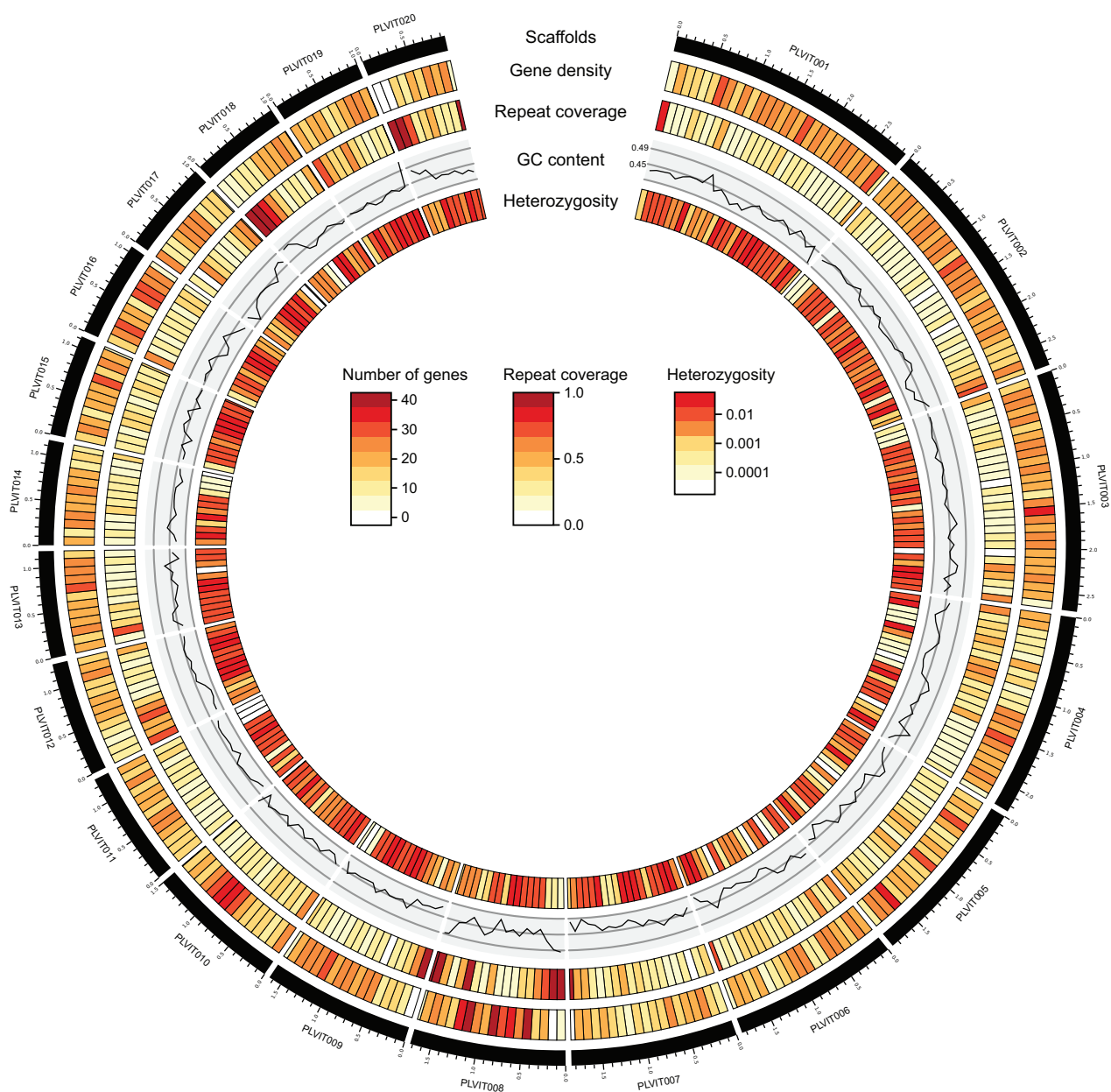
followed by ad hoc redundancy removal and polishing with short reads resulted in a high-quality pseudo-haploid assembly (table 1), with only 358 scaffolds and a total size of 92.94 Mb. This assembly was more complete (95.7% of expected BUSCO genes, Alveolata–Stramenopiles data set, supplementary table 2, Supplementary Material online) than previous drafts generated with short reads only (Dussert et al. 2016; Brill et al. 2018) or with a hybrid approach in which long reads were used for scaffolding (Yin et al. 2017). The assembly was also more contiguous, resolving many of the repetitive regions (supplementary fig. 1, Supplementary Material online). Heterozygosity levels were high in the sequenced *Pl. viticola* isolate, with a mean of 7,952 heterozygous sites/Mb. The assembly of highly heterozygous diploid species is often problematic. However, comparison of the 21-mer content between the self-corrected PacBio reads and the *Pl. viticola* assembly (supplementary fig. 2, Supplementary Material online) showed a k-mer spectrum very similar to what is expected in a good haploid assembly, with only a small proportion of the homozygous content found duplicated (blue area in the homozygous peak). The percentage of duplicated genes in our assembly was also lower than that for previous drafts, with only 1.7% of duplicated BUSCO genes. This indicated that our procedure for eliminating alternative haplotypes was efficient. The higher heterozygosity of *Pl. viticola* than of the homothallic *Pl. halstedii* (120 heterozygous sites/

Mb; Sharma et al. 2015) was probably due to its heterothallicism, which strongly favors outcrossing. Repeat sequences accounted for 37.34% of the genome assembly for *Pl. viticola*. Local repeat coverage varied considerably, from 0% to 100% in our 100 kb window analysis (fig. 1). Most (78.5%) of the identified repeat sequences were LTR retrotransposons and their nonautonomous derivatives (supplementary table 3, Supplementary Material online). In total, 15,960 protein-coding genes were predicted for *Pl. viticola*, 75.6% of which were supported by RNA-seq data. The completeness of the annotation was high, with 97.4% of the expected BUSCO proteins (table 1). Almost half the genes (46.7%) consisted of a single exon (table 1). As observed for repeat coverage, gene density in *Pl. viticola* varied considerably over the genome, from 0 to 53 genes per 100 kb window (fig. 1).

The assembly of the *Pl. muralis* genome with short reads resulted in 1,437 scaffolds, for a total size of 59.54 Mb (table 1). Estimated genome sizes in *Plasmopara* species range from 90 to 160 Mb (Voglmayr and Greilhuber 1998), so the smaller assembly size suggested that regions of the genome might be missing. However, the percentage of genes expected to be conserved was high in the assembly (95.8% of BUSCO genes), indicating a high level of completeness. Only 10.43% of the assembly consisted of repeat elements, suggesting that most of the repeated regions were not assembled, probably due to the exclusive use of paired-end reads with a short insert size. As in *Pl. viticola*, most (62.4%) of the identified repeat sequences were retrotransposons of the LTR order and their derivatives (supplementary table 3, Supplementary Material online). We annotated 12,194 protein-coding genes in the genome of *Pl. muralis*. The completeness of the annotation was again high, with 93.6% of expected BUSCO proteins (table 1). As observed for *Pl. viticola*, a large proportion of genes (37.7%) in *Pl. muralis* were composed of single exons.

### Gene Losses Linked to Biotrophic Lifestyle in Oomycetes

The *Pl. viticola* genome displayed a high degree of gene synteny with the genomes of *Pl. muralis*, *Ph. infestans*, and *Py. ultimum*. Depending on the species used for comparison, the mean size of the syntenic blocks in *Pl. viticola* ranged from 130 to 172 kb, with syntenic regions covering a total of 37.7% to 43.5% of the genome (supplementary table 4, Supplementary Material online). We observed a very low level of synteny between *Pl. viticola* and *Pl. halstedii*, which was surprising given the closeness of the phylogenetic relationship between these species: The mean syntenic block size was 38 kb, and syntenic regions accounted for only 10.2% of the genome. Moreover, syntenic blocks were not in the same order in *Pl. viticola* and *Pl. halstedii*, whereas their organization was similar in *Pl. viticola* and the other species (supplementary fig. 3, Supplementary Material online). This suggested that either the genome of *Pl. halstedii* had undergone extensive genomic rearrangements, or alternatively,



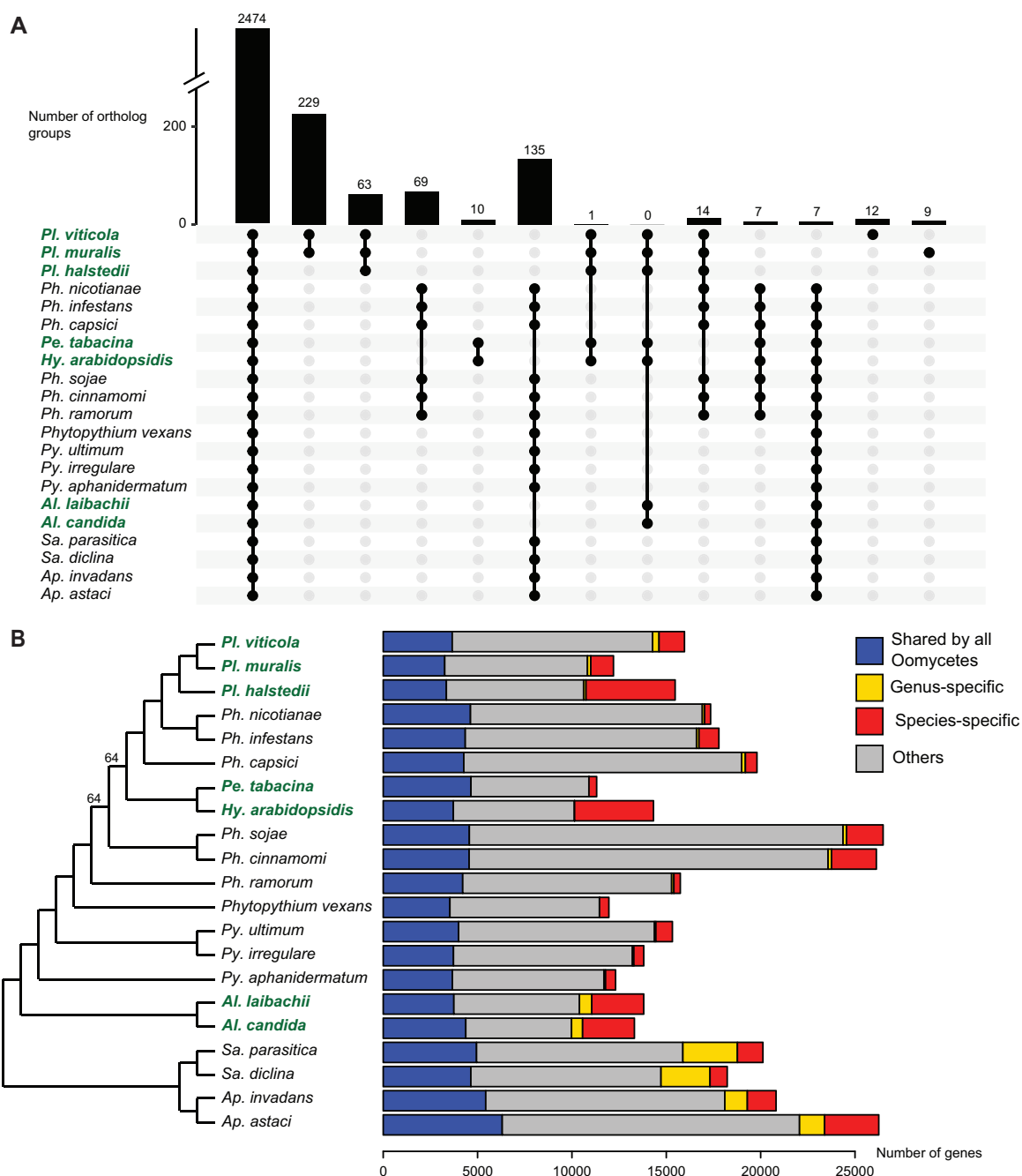
**Fig. 1.**—Genomic architecture of *Plasmopara viticola*. Gene density (number of genes per window), repeat coverage (proportion of the window covered by repeated sequences), GC content and the percentage of heterozygous sites are represented for genomic windows of 100 kb for the 20 largest scaffolds of the assembly (total length: 32.1 Mb). Tick marks on scaffolds represent 100 kb. The percentage of heterozygous sites is shown on a log scale.

could indicate the existence of missassemblies in the *Pl. halstedii* reference genome.

The orthology analysis detected 18,115 ortholog groups. Among these groups, 8,430 included *Pl. viticola* proteins and 8,158 included *Pl. muralis* proteins (8,044 ortholog groups included proteins from both species). A total of 2,474 ortholog groups were common to all oomycete species considered (fig. 2A), including 163 single-copy orthologs. The phylogeny based on these

single-copy orthologs (144 single-copy orthologs after filtering, for a total of 41,428 amino acid positions) suggested that downy mildews belonging to the Peronosporales (*Plasmopara* genus, *Pe. tabacina* and *Hy. arabidopsidis*) were paraphyletic and, consequently, that obligate biotrophy had evolved independently at least twice within this order (fig. 2B; supplementary fig. 4, Supplementary Material online). These results confirmed other recent phylogenetic analyses (Sharma et al. 2015;





**Fig. 2.**—Comparative analysis of 21 oomycete proteomes. (A) UpSet plot of the orthology analysis (3,030 ortholog groups out of 18,115 are represented). Bars represent the number of ortholog groups common to different species denoted by black dots. (B) Phylogenetic relationships and number of genes common to or specific to oomycete species. The maximum likelihood species tree (left) was built with 144 single-copy orthologs. All nodes had a bootstrap support of 100% unless otherwise indicated. The species tree with branch lengths is available in [supplementary figure 4, Supplementary Material](#) online. The bars on the right represent the numbers of genes in different categories. For both figures, biotrophic species names are shown in bold green typeface.

McCarthy and Fitzpatrick 2017; Bourret et al. 2018) contradicting earlier evidence suggesting that downy mildews are monophyletic (Göker et al. 2007). However, the number of oomycete species for which genomic sequence data are available remains small, and this result

should be reexamined when additional high-quality oomycete genome assemblies and annotation data sets are available.

Previous comparative studies led to the discovery of genes lost following the adaptation to biotrophy in particular

oomycete species (Baxter et al. 2010; Kemen et al. 2011). We searched for gene families common to or lost in all oomycete biotrophic species. Biotrophic species had no specific ortholog group in common, and only one group of orthologs (containing proteins of unknown function) was common to the biotrophic species of the Peronosporales order (*Plasmopara* sp., *Pe. tabacina*, and *Hy. arabidopsidis*), consistent with the notion that the two lineages of biotrophic downy mildew species evolved independently. We identified 135 groups of orthologs absent exclusively in biotrophic species (fig. 2A), corresponding to gene losses common to all biotrophs. Although some of these gene losses might be random, they also could be due to convergent adaptive processes. Some of the GO terms for which enrichment was detected in these ortholog groups (supplementary table 5, Supplementary Material online) were totally absent from biotrophic oomycete proteomes. This was the case for proteins with riboflavin (vitamin B2) transport activity. Riboflavin is the precursor of the FAD and FMN cofactors, found in flavoproteins, and a significant depletion of GO terms characterizing flavoproteins (“FAD binding”, “FMN binding”, “D-amino acid oxidase activity” and “succinate dehydrogenase activity”) was also observed in biotrophs. Overall, biotrophic species had smaller numbers of flavoproteins, with only 17 on average, versus 57 in other species (supplementary table 6, Supplementary Material online). Cobalamin (vitamin B12, another cofactor) binding proteins, such as methylmalonyl-CoA mutase and the cobalamin-dependent methionine synthase, were also totally absent from biotrophic species. Furthermore, one of the groups of orthologs absent from biotrophic species contained proteins involved in cobalamin metabolism. A possible explanation for the absence of these genes is that biotrophic species might not be able to obtain these cofactors or their precursors easily from the host, and they have therefore lost genes encoding proteins requiring these cofactors.

Only 15 of the *Ph. infestans* orthologs missing in biotrophic species were KEGG-annotated (supplementary table 7, Supplementary Material online), and most of their functions were found in the GO enrichment analysis. Among them were two proteins (PITG\_13128 and PITG\_21426) from the sterol biosynthesis pathway. These genes are expressed in *Ph. infestans*, but their actual function is unknown because they do not seem to be involved in sterol modification (Dahlin et al. 2017). The protein from the pyrimidine metabolism pathway (PITG\_02105) may be involved in the pyrimidine salvage pathway during the necrotrophic phase (García-Bayona et al. 2014), which might explain why it has been lost in biotrophic oomycetes.

The GO terms depleted in biotrophic species also included “proteolysis”, which encompassed two ortholog groups including proteins with PAN/Apple domains, several of which had a secretion peptide. These genes may have been lost to facilitate the evasion of host recognition, because PAN/Apple domains, which bind polysaccharides or proteins, can induce

plant defenses (Larroque et al. 2012). The proteins annotated with the terms DNA binding/DNA recombination/DNA integration probably constituted two large transposable element families, surprisingly absent from all biotrophic oomycetes. Finally, the missing groups of orthologs included a large family of transmembrane amino acid transporters, two ortholog groups of ubiquitin-protein ligases, one ortholog group of patatin-like phospholipases (a function also found in the *Ph. infestans* KEGG annotation) and one group of secreted peroxidases. These gene families may be involved in specific metabolic pathways that have been lost in biotrophic oomycetes, but the reasons for this loss remain unclear because the precise functions of these proteins are unknown.

### Repertoire of Pathogenicity-Related Proteins in *Pl. viticola* and *Pl. muralis*

Plant pathogens secrete proteins to facilitate successful host colonization and growth. These proteins may remain in the apoplastic region or are delivered to the cytoplasm of plant cells. The proteome of *Pl. viticola* contained 1,592 putatively secreted proteins (9.97% of the proteome), 1,244 of which were supported by RNA-seq data. This corresponded to about 2.5 times as many secreted proteins as were found in *Pl. halstedii* (631), but was similar to the numbers found in *Phytophthora* species (see Sharma et al. 2015 for review). The number of secreted proteins in the *Pl. muralis* proteome (720, i.e., 5.90% of the proteome) was closer to that for *Pl. halstedii*. Differences in secretome size may be due at least partly to differences in assembly completeness. Indeed, a comparison of our previous draft with the long-read assembly with QAST revealed that 4,477 genes, including 655 encoding secreted proteins, were missing from the INRA-PV221 short-read assembly. Thus, the PacBio assembly recovered a larger number of genes, including a considerable number of genes encoding secreted proteins. The secretomes of the two species included a large proportion of candidate pathogenicity-related genes (table 2) putatively involved in plant–pathogen interactions. Furthermore, GO enrichment analysis (supplementary tables 8 and 9, Supplementary Material online) showed that these secretomes were enriched in functions linked to plant cell wall modifications (degradation and modification of cellulose and pectin), proteolysis, protease inhibition, and reactive oxygen species metabolism, which are involved in plant defenses.

RxLR proteins, a class of cytoplasmic effectors (i.e., translocated into the plant cell), accounted for a large proportion of the proteins in the secretomes. The secreted proteins included 540 proteins from *Pl. viticola* and 132 proteins from *Pl. muralis* (33.9% and 18.3% of the secreted proteins, respectively) identified as candidate RxLR effector genes by at least one method (supplementary table 10, Supplementary Material online). Phyre2 analysis revealed that a large proportion of the candidates identified by BLAST also displayed high-

**Table 2**Putative Pathogenicity-Related Proteins Found in *Plasmopara viticola* and *Plasmopara muralis*

	<i>Pl. viticola</i>	<i>Pl. muralis</i>
Secreted proteins	1,592	720
Aspartic peptidases	37 (2)	19 (2)
Cutinases	2 (1)	2 (2)
Cysteine proteases	54 (11)	40 (8)
Cysteine-rich proteins	22 (16)	21 (14)
Elicitins	19 (14)	20 (14)
Glycosyl hydrolases	195 (118)	115 (53)
NPP1-like proteins	10 (10)	7 (5)
Pectate lyases	25 (19)	5 (3)
Pectin esterases	21 (15)	14 (5)
Protease inhibitors	20 (13)	15 (8)
Serine proteases	161 (79)	97 (27)
RxLRs	540	143
with WY motif	317	66
WY motif, no RxLR domain	26	12

NOTE.—Number for proteins with a secretion peptide are in brackets except for secreted proteins and RxLRs, which all have a secretion peptide.

confidence structural homology to known RxLR effectors. The number of putative RxLRs with RNA-seq support in *Pl. viticola* (484) was also high. There were 343 secreted proteins (including 317 RxLRs) with at least one WY motif in *Pl. viticola*, and 78 (66 RxLRs) in *Pl. muralis*. The number of WY domains in a given protein ranged from 1 to 17 (median: 3). The sequences of secreted proteins with WY motifs not annotated as RxLR contained a dEER domain, as shown by their sequence logo (supplementary fig. 5, Supplementary Material online), indicating that they might also act as RxLR-like effectors.

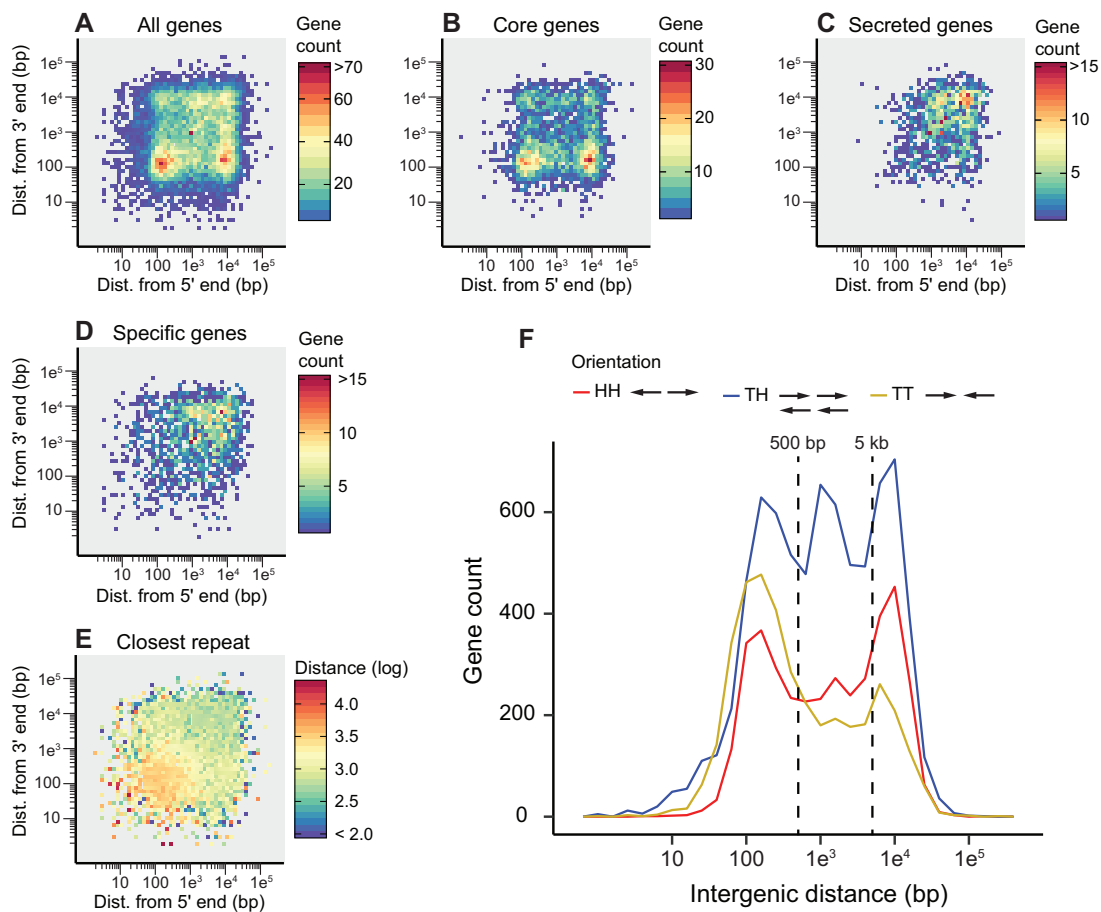
Genes specific to a lineage are often involved in species-specific adaptive processes (Khalturin et al. 2009). We therefore searched for genes restricted to *Plasmopara* species infecting hosts from the Vitaceae. Orthology analysis identified 229 ortholog groups (comprising 691 *Pl. viticola* genes and 483 *Pl. muralis* genes, for a total of 1,174 genes) common only to *Pl. viticola* and *Pl. muralis* (fig. 2A). Secreted proteins accounted for a large proportion (32.7%) of these proteins, probably due to their role in pathogen–host interactions. Most of these secreted proteins (61.7%, distributed in 39 ortholog groups) were annotated as RxLR, suggesting that adaptation to hosts from the Vitaceae probably involved diversification of this effector family. Specific groups also included 17 secreted serine proteases (in one group), two glycosyl hydrolases and one necrosis-inducing NPP1-like protein. Another 1,347 genes were specific to *Pl. viticola*, including 151 secreted proteins, 28 of which were annotated as RxLRs. *Plasmopara viticola*-specific proteins also included two secreted cysteine proteases, three glycosyl hydrolases, three pectin esterases and one serine protease. There were 1,194 proteins (40 secreted) specific to *Pl. muralis*, including four RxLRs. Other interesting proteins included two glycosyl hydrolases (one of which was secreted) and one serine protease.

Most of the genes specific to *Pl. viticola* or *Pl. muralis* were not functionally annotated, with only 21.9% and 11.6%, respectively, of these genes having at least one mapped GO term.

### A Two-Speed Genome Architecture

*Plasmopara viticola* and *Pl. muralis* displayed the two-speed genome architecture (fig. 3; supplementary fig. 6, Supplementary Material online) observed in several filamentous plant pathogens (Dong et al. 2015). Core genes common to all oomycetes were preferentially located in gene-dense regions (fig. 3B), whereas genes encoding secreted proteins in *Pl. viticola* and *Pl. muralis* had larger flanking intergenic distances than other genes, indicating that they were preferentially located in gene-sparse regions (fig. 3C). This was also the case for genes specific to *Pl. viticola* and *Pl. muralis* (fig. 3D). Statistical comparison of distances between genes and their closest neighbor between gene categories (supplementary fig. 7, left panels, Supplementary Material online) confirmed these observations ( $P < 1e^{-15}$  for all Wilcoxon rank-sum tests). Gene-sparse regions coincided with repeat-rich regions in *Pl. viticola*, as the distance between genes and their closest repeat sequence was shorter in these regions (fig. 3E, right panel of supplementary fig. 7A, Supplementary Material online). It was not clear whether this was also the case in *Pl. muralis* (supplementary fig. 6E, right panel of supplementary fig. 7B, Supplementary Material online), probably because, as previously discussed, most of the repeat regions were not present in the assembly.

The distribution of adjacent gene-pair orientations was unbalanced for both *Pl. viticola* and *Pl. muralis* (fig. 3F; supplementary fig. 6F, Supplementary Material online). Two major groups were identified when considering all genes or only core genes with short 3' intergenic distance: Genes with short (between 80 and 300 bp) or large (between 5 and 20 kb, approximately) 5' intergenic distances (fig. 3A and B). In *Pl. viticola*, this pattern was explained by an excess of gene pairs in an HH orientation when considering intergenic distances  $>5$  kb (32% of HH gene pairs compared with the expected 25%,  $P < 1e^{-15}$  for the  $\chi^2$  test comparing the observed proportions to those expected by chance, supplementary table 11, Supplementary Material online), and an excess of gene pairs in a TT orientation for intergenic distances  $<500$  bp (34% of TT gene pairs compared with the expected 25%,  $P < 1e^{-15}$ ). The same results were observed in *Pl. muralis* (supplementary table 11, Supplementary Material online). Thus, gene pairs with a TT orientation, which had a shared 3' intergenic region, were, on average, closer to each other than gene pairs with an HH orientation, which had a shared 5' intergenic region. Neighboring genes generally have correlated expression levels in eukaryotic genomes (Michalak 2008), but TT gene pairs are more frequently negatively co-regulated in *Arabidopsis thaliana* (Williams and Bowles 2004) and *Saccharomyces cerevisiae* (Wang et al. 2014) than



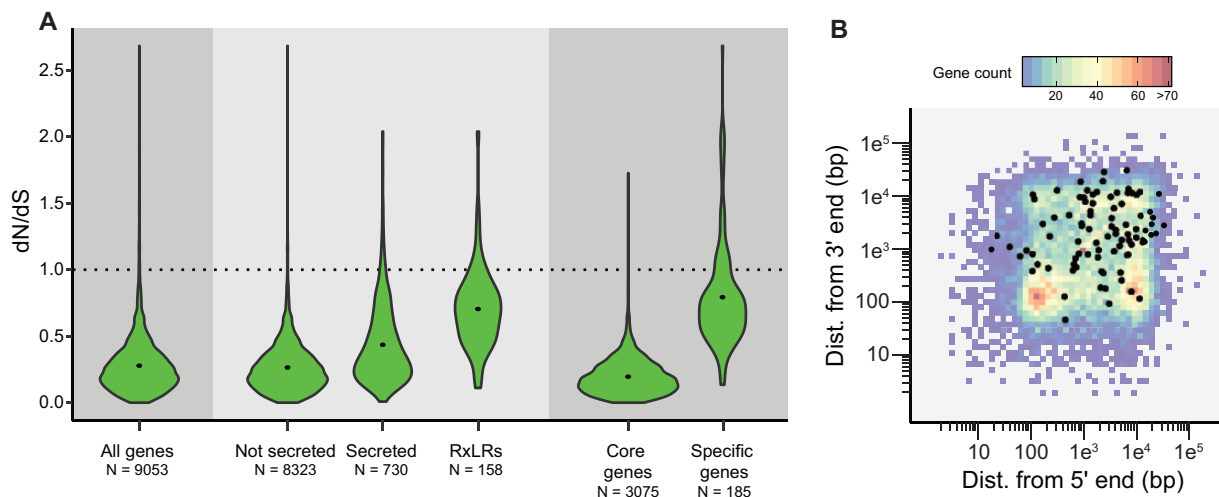
**Fig. 3.**—Local gene density and organization in *Plasmopara viticola*. Local gene density when considering (A) all genes, (B) core genes found in ortholog groups common to all oomycetes, (C) genes encoding secreted proteins and (D) genes found only in *Pl. viticola* or in both *Pl. viticola* and *Pl. muralis*. The number of genes for 2D (5' and 3') intergenic distance bins is represented as a heatmap. (E) Mean distance between genes and their closest repeat element, represented as a heatmap for 2D intergenic distance bins. (F) Orientation and intergenic distance of adjacent gene pairs. The gene count for different intergenic distances has been plotted for adjacent gene pairs with a head-to-head (HH), tail-to-head (TH) and tail-to-tail (TT) orientation. Dashed vertical lines indicate the cutoffs used for the gene orientation analysis. Distances are shown on a log scale for all figures.

adjacent genes in HH and TH orientations. Unfortunately, we had too little RNA-seq data (not enough mapped reads, see the Materials and Methods section) to determine whether this was the case in *Pl. viticola*. In *Ph. infestans*, about 10% of adjacent genes have (positively or negatively) correlated expression levels (Roy et al. 2013), but the specific effect of different gene-pair orientations on gene expression has not been investigated in oomycetes.

#### Rates of Evolution of *Pl. viticola* and *Pl. muralis* Genes

Pairwise  $dN/dS$  values for *Pl. viticola* and *Pl. muralis* orthologs (fig. 4A) were significantly higher ( $P < 10^{-15}$ ) for genes encoding secreted proteins (mean: 0.44) than for other genes (mean: 0.27). For RxLRs, the mean pairwise  $dN/dS$  was 0.70 ( $P < 10^{-15}$ ), indicating an even faster rate of evolution. This pattern was also observed when comparing core genes (mean: 0.20) and genes specific to species infecting hosts

from the Vitaceae (mean: 0.79,  $P < 10^{-15}$ ), possibly due, at least in part, to relaxed selective constraints on lineage-specific genes (Cai and Petrov 2010). Overall, 92 pairs of orthologs had pairwise  $dN/dS$  values above 1 (supplementary table 12, Supplementary Material online), 64 of which were found expressed in our RNA-seq data in *Pl. viticola*. They included 37 genes encoding proteins secreted in at least one of the species, including 19 RxLRs, two serine proteases, a Kazal-like protease inhibitor, a cysteine-rich protein, a glycosyl hydrolase, and a mannose-binding lectin identified in a previous study (Mestre et al. 2012). All these genes encoding for secreted proteins were expressed in *Pl. viticola* except for PVIT\_0017527.T1. This gene had no other functional domain, but its ortholog in *Pl. muralis*, PMUR\_0012778.T1, was annotated as an RxLR. Two of the candidate RxLRs had best BLASTP hits in the nr database with previously characterized *Pl. viticola* genes: PVIT\_0013263.T1 displayed 99.6% amino acid identity with RxLR16, which triggers a hypersensitive



**Fig. 4.**—Evolution rates for ortholog pairs. (A) Pairwise dN/dS values for *Plasmopara viticola* and *Plasmopara muralis* orthologs, for different categories of genes. Core genes are genes found in ortholog groups common to all oomycetes and specific genes are found in ortholog groups common only to *Pl. viticola* and *Pl. muralis*. Average dN/dS values are represented by a black dot. *N*: number of ortholog pairs. (B) Local gene density in *Pl. viticola* for all genes (heatmap) and for genes with a dN/dS above 1 (black dots).

response in *Nicotiana benthamiana* (Xiang et al. 2017), and PVIT\_0010026.T1 displayed 91.6% identity with RxLR28, which suppresses plant defenses in the same species (Xiang et al. 2016). Genes with dN/dS values above 1 were preferentially located in gene-sparse regions of the genome (fig. 4B), consistent with the notion that genes in these regions tend to evolve faster and are involved in adaptive processes.

#### Genes Under Positive Selection in *Pl. viticola* and *Pl. muralis*

The branch-site test was used to detect positive selection in *Pl. viticola* and *Pl. muralis*. This test had a relatively low power given that data were available for only six species, but it was nevertheless more sensitive than the pairwise dN/dS approach. In total, 270 single-copy orthologs (6.72% of the 4,017 gene families tested) were found to be under positive selection in at least one of the branches tested in branch-site tests (10% FDR threshold). The overall proportion of genes encoding secreted proteins with positive selection signals was low (table 3). For the *Pl. viticola* branch, 131 significant genes were identified (supplementary table 13, Supplementary Material online), all of which were found expressed in the RNA-seq data except for PVIT\_0009280.T1. Only three of the genes were encoding secreted proteins (2.54% of the tested secreted proteins). These proteins included a cysteine protease and two proteins of unknown function. The candidate genes also included a gene encoding a Kazal-like protease inhibitor, although this protein lacked a secretion signal. For the *Pl. muralis* branch, 157 genes were found to be under selection (supplementary table 14, Supplementary Material online), including nine encoding secreted proteins (5.17%

of the secreted proteins tested): An NADPH-hemoprotein reductase, a ubiquitin-specific peptidase, a protein with an Lsm domain (found in proteins involved in mRNA maturation), a glycosyl hydrolase, a protein with a heavy metal-associated domain, three proteins with EGF-like or filamin domains, and one with no identified domain. The only secreted proteins with a positive selection signal in the two branches were the cysteine protease (no secretion peptide detected in *Pl. muralis*) and one of the proteins of unknown function.

Several genes encoding transporters also presented significant positive selection signals, and some had functions potentially involved in plant–pathogen interactions: For *Pl. viticola*, a major facilitator superfamily transporter with 1,3- $\beta$ -glucan synthase activity, a multidrug transporter, a copper ion transporter and a folate-biopterin transporter, and for *Pl. muralis*, an amino acid transporter and a phospholipid-translocating ATPase. These transporters may play an important role in interactions between *Pl. viticola* and *Pl. muralis* and their hosts, notably for the acquisition of specific nutrients. For example, a sucrose transporter plays a major role not only in carbon uptake, but also in the avoidance of plant defenses in the biotrophic corn smut fungus *Ustilago maydis* (Wahl et al. 2010). These transporters may also be involved in resistance to plant defense compounds or fungicides (Del Sorbo et al. 2000). Finally, there is at least one example of a secreted effector protein resulting from the alternative splicing of a gene coding for a transporter in the obligate oomycete pathogen *Pseudoperonospora cubensis* (Savory et al. 2012).

Enrichment in functional terms was found only in the GO enrichment analysis for the *Pl. viticola* branch. The terms for which enrichment was detected were “snoRNA binding” ( $q=0.014$ ) and “nuclear localization binding” ( $q=0.074$ ).

**Table 3**

Function of Genes with a Signal of Positive Selection in the Branch-Site Tests

	<i>Pl. viticola</i> Branch	<i>Pl. muralis</i> Branch	Both Branches
Secreted proteins	3	9	2
Transmembrane transporters	9	5	0
RNA modifications and processing <sup>a</sup>	9	11	2
Other functions	101	101	14
Unknown function <sup>b</sup>	9	31	0

NOTE.—The precise function of secreted proteins and transmembrane transporters are detailed in the main text. The functions of all proteins are available in [supplementary tables 13 and 14, Supplementary Material](#) online.

<sup>a</sup>Including splicing factors, mRNA capping proteins, proteins with Lsm domain, RNA methyltransferases, chromodomain proteins, DEAD/DEAH box RNA helicases, RNA polymerase subunits and proteins involved in nonsense mediated mRNA decay.

<sup>b</sup>Proteins with no mapped GO term and not belonging to any other categories in this table.

Small nucleolar RNAs (snoRNAs) are involved principally not only in ribosomal RNA modifications, but also in RNA interference (Scott and Ono 2011), and two of the three proteins with the “nuclear localization binding” term were transporters of ribosomal proteins. In addition, both tested branches included multiple candidate genes with functions linked to RNA modification or processing (table 3). Genes under selection in the *Pl. viticola* branch included two orthologs of *Ph. infestans* genes encoding chromodomain proteins potentially involved in gene silencing (PITG\_07902 and PITG\_15837; Vetukuri et al. 2011). The other genes were linked to RNA metabolism, mRNA maturation and processing, or rRNA and tRNA modification. The genes with a selection signal in both branches included an snoRNA binding protein and a DEAD/DEAH RNA helicase. Small RNAs play a major role in plant–pathogen interactions, being involved in the regulation of pathogen virulence by the host (host-induced gene silencing) and the manipulation of host immunity by the pathogen (reviewed in Weiberg and Jin 2015), potentially accounting for the positive selection signal for some components of the RNA machinery. A recent study by Brill et al. (2018) demonstrated the presence of RNA interference machinery genes in *Pl. viticola* and the existence of a bidirectional exchange of small RNAs between *Pl. viticola* and its host *V. vinifera*, confirming the importance of small RNAs in this pathosystem.

Our list of candidate genes could guide the discovery of new effectors and the prioritization of functional validation analyses. This is particularly important for obligate biotrophic species, for which functional studies are difficult and currently restricted to heterologous expression systems. Genome editing is currently being developed in the hemi-biotrophic *Phytophthora* genus, the degree of success differing between species (van den Hoogen and Govers 2018), and may be even more challenging in biotrophic downy mildews.

## Conclusions

This study presents a genome assembly of *Pl. viticola*, the grapevine downy mildew pathogen, generated exclusively using PacBio long reads at high coverage. This sequencing strategy yielded a better assembly of repetitive regions and, consequently, improved the detection of genes encoding secreted proteins potentially involved in pathogenicity and preferentially located in these regions. We also assembled the genome of *Pl. muralis* with short reads, the first step in the comparative genomics study of multiple *Plasmopara* species infecting hosts from the Vitaceae (Rouxel et al. 2014, 2013), which will shed light on the genetic mechanisms underlying host specialization in this species complex. The different approaches used highlighted the importance of cytoplasmic RxLR effectors for the adaptation of *Pl. viticola* and *Pl. muralis* to their host, as already shown for other pathogens in the order Peronosporales (Bozkurt et al. 2012). Our genome-wide approach detected positive selection signals for other candidate genes, including several genes encoding transporters and genes linked to the RNA machinery.

The availability of a high-quality reference assembly for the *Pl. viticola* genome also paves the way for robust population genetic studies based on genome-wide diversity (i.e., by resequencing individuals), such as population genome scans to detect genes under selection and genome-wide association studies to link genotype and phenotype variations. This work will improve our understanding of the genetic basis of the rapid adaptation of *Pl. viticola* to abiotic (e.g., fungicides) and biotic (e.g., partially resistant cultivars) factors.

## Supplementary Material

Supplementary data are available at *Genome Biology and Evolution* online.

## Acknowledgments

We thank an anonymous reviewer for their suggestions which improved this manuscript. We thank Céline Bénétreau, Jérôme Jolivet and Sylvie Richart-Cervera for their help with the production of *Pl. viticola* material, Erika Sallet and Ludovic Legrand for helping us with the gene and functional annotations and David Rengel for his assistance with the analysis of RNA-seq data. We also thank Sophien Kamoun for his comments. We thank the Genotoul bioinformatics platform Toulouse Midi-Pyrenees (Bioinfo Genotoul) for providing help and computing resources.

## Funding

This study was funded by the European Commission [INNOVINE, FP7-KBBE-311775] and the French National Research Agency [GANDALF project, ANR-12-ADAP-0009; EFFECTOORES project, ANR-13-ADAP-0003; Investments for

the future program in the Cluster of Excellence COTE, ANR-10-LABX-45]. This work was performed in collaboration with the GeT core facility, Toulouse, France (<http://get.genotoul.fr>), and was supported by the France Génomique National infrastructure, funded as part of the Investments for the future program managed by the French National Research Agency [ANR-10-INBS-09] and by the GET-PACBIO program [“Programme opérationnel FEDER-FSE MIDI-PYRENEES ET GARONNE 2014-2020”].

## Literature Cited

- Adhikari BN, et al. 2013. Comparative genomics reveals insight into virulence strategies of plant pathogenic Oomycetes. *PLoS One* 8(10):e75072.
- Alexa A, Rahnenfuhrer J. 2016. topGO: enrichment analysis for gene ontology. R Package Version 2.28.0.
- Alexa A, Rahnenfuhrer J, Lengauer T. 2006. Improved scoring of functional groups from gene expression data by decorrelating GO graph structure. *Bioinformatics* 22(13):1600–1607.
- Anders S, Pyl PT, Huber W. 2015. HTSeq—a Python framework to work with high-throughput sequencing data. *Bioinformatics* 31(2):166–169.
- Bankevich A, et al. 2012. SPAdes: a new genome assembly algorithm and its applications to single-cell sequencing. *J Comput Biol.* 19(5):455–477.
- Baxter L, et al. 2010. Signatures of adaptation to obligate biotrophy in the *Hyaloperonospora arabidopsidis* genome. *Science* 330(6010):1549–1551.
- Berlin K, et al. 2015. Assembling large genomes with single-molecule sequencing and locality-sensitive hashing. *Nat Biotechnol.* 33(6):623–630.
- Bourret TB, et al. 2018. Multiple origins of downy mildews and mitochondrial discordance within the paraphyletic genus *Phytophthora*. *PLoS One* 13(3):e0192502.
- Boutemy LS, et al. 2011. Structures of *Phytophthora* RXLR effector proteins: a conserved but adaptable fold underpins functional diversity. *J Biol Chem.* 286(41):35834–35842.
- Bozkurt TO, Schornack S, Banfield MJ, Kamoun S. 2012. Oomycetes, effectors, and all that jazz. *Curr Opin Plant Biol.* 15(4):483–492.
- Brilli M, et al. 2018. A multi-omics study of the grapevine-downy mildew (*Plasmopara viticola*) pathosystem unveils a complex protein coding- and noncoding-based arms race during infection. *Sci Rep.* 8(1):757.
- Cai JJ, Petrov DA. 2010. Relaxed purifying selection and possibly high rate of adaptation in primate lineage-specific genes. *Genome Biol Evol.* 2(0):393–409.
- Castresana J. 2000. Selection of conserved blocks from multiple alignments for their use in phylogenetic analysis. *Mol Biol Evol.* 17(4):540–552.
- Cheeseman K, et al. 2014. Multiple recent horizontal transfers of a large genomic region in cheese making fungi. *Nat Commun.* 5:2876.
- Chin C-S, et al. 2016. Phased diploid genome assembly with single-molecule real-time sequencing. *Nat Methods* 13(12):1050–1054.
- Cock PJA, Grünig BA, Paszkiewicz K, Pritchard L. 2013. Galaxy tools and workflows for sequence analysis with applications in molecular plant pathology. *PeerJ* 1:e167.
- Conway JR, Lex A, Gehlenborg N. 2017. UpSetR: an R package for the visualization of intersecting sets and their properties. *Bioinformatics* 33(18):2938–2940.
- Crooks GE, Hon G, Chandonia J-M, Brenner SE. 2004. WebLogo: a sequence logo generator. *Genome Res.* 14(6):1188–1190.
- Dabney A, Storey JD, Warnes GR. 2015. qvalue: q-value estimation for false discovery rate control. R Package Version 2.8.0.
- Dahlin P, Srivastava V, Ekengren S, McKee LS, Bulone V. 2017. Comparative analysis of sterol acquisition in the oomycetes *Saprolegnia parasitica* and *Phytophthora infestans*. *PLoS One* 12(2):e0170873.
- Daub JT, et al. 2013. Evidence for polygenic adaptation to pathogens in the human genome. *Mol Biol Evol.* 30(7):1544–1558.
- Delmas CEL, et al. 2016. Adaptation of a plant pathogen to partial host resistance: selection for greater aggressiveness in grapevine downy mildew. *Evol Appl.* 9(5):709–725.
- Delmas CEL, et al. 2017. Soft selective sweeps in fungicide resistance evolution: recurrent mutations without fitness costs in grapevine downy mildew. *Mol Ecol.* 26(7):1936–1951.
- Delmotte F, et al. 2006. Microsatellite DNA markers for *Plasmopara viticola*, the causal agent of downy mildew of grapes. *Mol Ecol Notes* 6(2):379–381.
- Derevnina L, et al. 2015. Genome sequence and architecture of the tobacco downy mildew pathogen *Peronospora tabacina*. *Mol Plant Microbe Interact.* 28(11):1198–1215.
- Dobin A, et al. 2013. STAR: ultrafast universal RNA-seq aligner. *Bioinformatics* 29(1):15–21.
- Dong S, Raffaele S, Kamoun S. 2015. The two-speed genomes of filamentous pathogens: waltz with plants. *Curr Opin Genet Dev.* 35:57–65.
- Dussert Y, et al. 2016. Draft genome sequence of *Plasmopara viticola*, the grapevine downy mildew pathogen. *Genome Announc.* 4(5):e00987–16.
- Edgar RC. 2004. MUSCLE: multiple sequence alignment with high accuracy and high throughput. *Nucleic Acids Res.* 32(5):1792–1797.
- Emanuelsson O, Nielsen H, Brunak S, von Heijne G. 2000. Predicting subcellular localization of proteins based on their N-terminal amino acid sequence. *J Mol Biol.* 300(4):1005–1016.
- Emms DM, Kelly S. 2015. OrthoFinder: solving fundamental biases in whole genome comparisons dramatically improves orthogroup inference accuracy. *Genome Biol.* 16(1):157.
- Fletcher K, et al. 2018. Comparative genomics of downy mildews reveals potential adaptations to biotrophy. *BMC Genomics* 19(1):851.
- Flutre T, Duprat E, Feuillet C, Quesneville H, Barton G. 2011. Considering transposable element diversification in *de novo* annotation approaches. *PLoS One* 6(1):e16526.
- Fontaine MC, et al. 2013. Genetic signature of a range expansion and leap-frog event after the recent invasion of Europe by the grapevine downy mildew pathogen *Plasmopara viticola*. *Mol Ecol.* 22(10):2771–2786.
- García-Bayona L, et al. 2014. De novo pyrimidine biosynthesis in the oomycete plant pathogen *Phytophthora infestans*. *Gene* 537(2):312–321.
- Gobbin D, et al. 2005. Importance of secondary inoculum of *Plasmopara viticola* to epidemics of grapevine downy mildew. *Plant Pathol.* 54(4):522–534.
- Gobbin D, Rumbou A, Linde CC, Gessler C. 2006. Population genetic structure of *Plasmopara viticola* after 125 years of colonization in European vineyards. *Mol Plant Pathol.* 7(6):519–531.
- Göker M, Voglmayr H, Riethmüller A, Oberwinkler F. 2007. How do obligate parasites evolve? A multi-gene phylogenetic analysis of downy mildews. *Fungal Genet Biol.* 44(2):105–122.
- Gotz S, et al. 2008. High-throughput functional annotation and data mining with the Blast2GO suite. *Nucleic Acids Res.* 36(10):3420–3435.
- Grabherr MG, et al. 2011. Full-length transcriptome assembly from RNA-Seq data without a reference genome. *Nat Biotechnol.* 29(7):644–652.

- Gremme G, Steinbiss S, Kurtz S. 2013. GenomeTools: a comprehensive software library for efficient processing of structured genome annotations. *IEEE/ACM Trans Comput Biol Bioinform.* 10(3):645–656.
- Guindon S, et al. 2010. New algorithms and methods to estimate maximum-likelihood phylogenies: assessing the performance of PhyML 3.0. *Syst Biol.* 59(3):307–321.
- Gurevich A, Saveliev V, Vyahhi N, Tesler G. 2013. QUASt: quality assessment tool for genome assemblies. *Bioinformatics* 29(8):1072–1075.
- Haas BJ, et al. 2009. Genome sequence and analysis of the Irish potato famine pathogen *Phytophthora infestans*. *Nature* 461(7262):393–398.
- Hoff KJ, Lange S, Lomsadze A, Borodovsky M, Stanke M. 2016. BRAKER1: unsupervised RNA-Seq-Based Genome Annotation with GeneMark-ET and AUGUSTUS. *Bioinformatics* 32(5):767–769.
- Holt C, Yandell M. 2011. MAKER2: an annotation pipeline and genome-database management tool for second-generation genome projects. *BMC Bioinformatics* 12(1):491.
- van den Hoogen J, Govers F. 2018. Attempts to implement CRISPR/Cas9 for genome editing in the oomycete *Phytophthora infestans*. *bioRxiv*, doi: 10.1101/274829.
- Jiang RHY, et al. 2013. Distinctive expansion of potential virulence genes in the genome of the Oomycete fish pathogen *Saprolegnia parasitica*. *PLoS Genet* 9(6):e1003272.
- Jones P, et al. 2014. InterProScan 5: genome-scale protein function classification. *Bioinformatics* 30(9):1236–1240.
- Katoh K, Standley DM. 2013. MAFFT multiple sequence alignment software version 7: improvements in performance and usability. *Mol Biol Evol.* 30(4):772–780.
- Kelley LA, Mezulis S, Yates CM, Wass MN, Sternberg M. 2015. The Phyre2 web portal for protein modeling, prediction and analysis. *Nat Protoc.* 10(6):845–858.
- Kemen E, et al. 2011. Gene gain and loss during evolution of obligate parasitism in the white rust pathogen of *Arabidopsis thaliana*. *PLoS Biol.* 9(7):e1001094.
- Khalturin K, Hemmrich G, Fraune S, Augustin R, Bosch T. 2009. More than just orphans: are taxonomically-restricted genes important in evolution? *Trends Genet.* 25(9):404–413.
- Kobayashi M, et al. 2017. Genome analysis of the foxtail millet pathogen *Sclerospora graminicola* reveals the complex effector repertoire of graminicolous downy mildews. *BMC Genomics* 18(1):897.
- Koboldt DC, et al. 2012. VarScan 2: somatic mutation and copy number alteration discovery in cancer by exome sequencing. *Genome Res.* 22(3):568–576.
- Krogh A, Larsson B, von Heijne G, Sonnhammer EL. 2001. Predicting transmembrane protein topology with a hidden Markov model: application to complete genomes. *J Mol Biol.* 305(3):567–580.
- Krzywinski M, et al. 2009. Circos: an information aesthetic for comparative genomics. *Genome Res.* 19(9):1639–1645.
- Lamour KH, et al. 2012. Genome sequencing and mapping reveal loss of heterozygosity as a mechanism for rapid adaptation in the vegetable pathogen *Phytophthora capsici*. *Mol Plant Microbe Interact.* 25(10):1350–1360.
- Larroque M, et al. 2012. The unique architecture and function of cellulose-interacting proteins in oomycetes revealed by genomic and structural analyses. *BMC Genomics* 13(1):605.
- Lefort V, Longueville J-E, Gascuel O. 2017. SMS: smart model selection in PhyML. *Mol. Biol. Evol* 34(9):2422–2424.
- Lévesque CA, et al. 2010. Genome sequence of the necrotrophic plant pathogen *Pythium ultimum* reveals original pathogenicity mechanisms and effector repertoire. *Genome Biol.* 11(7):R73.
- Li H, Durbin R. 2009. Fast and accurate short read alignment with Burrows-Wheeler transform. *Bioinformatics* 25(14):1754–1760.
- Liu H, et al. 2016. Genomes and virulence difference between two physiological races of *Phytophthora nicotianae*. *Gigascience* 5(1):3.
- Liu Y, et al. 2018. *In planta* functional analysis and subcellular localization of the Oomycete pathogen *Plasmopara viticola* candidate RXLR effector repertoire. *Front Plant Sci.* 9:286.
- Lyons E, Freeling M. 2008. How to usefully compare homologous plant genes and chromosomes as DNA sequences. *Plant J.* 53(4):661–673.
- Lyons E, Pedersen B, Kane J, Freeling M. 2008. The value of nonmodel genomes and an example using SynMap within CoGe to dissect the hexaploidy that predates the rosids. *Trop Plant Biol.* 1(3–4):181–190.
- Mapleson D, Garcia Accinelli G, Kettleborough G, Wright J, Clavijo BJ. 2016. KAT: a K-mer analysis toolkit to quality control NGS datasets and genome assemblies. *Bioinformatics* 33(4):574–576.
- McCarthy CGP, Fitzpatrick DA. 2017. Phylogenomic reconstruction of the Oomycete phylogeny derived from 37 genomes. *mSphere* 2(2):e00095-17.
- McMullan M, et al. 2015. Evidence for suppression of immunity as a driver for genomic introgressions and host range expansion in races of *Albugo candida*, a generalist parasite. *Elife* 4:e04550.
- Mestre P, et al. 2016. Comparative analysis of expressed CRN and RXLR effectors from two *Plasmopara* species causing grapevine and sunflower downy mildew. *Plant Pathol.* 65(5):767–781.
- Mestre P, Piron M-C, Merdinoglu D. 2012. Identification of effector genes from the phytopathogenic Oomycete *Plasmopara viticola* through the analysis of gene expression in germinated zoospores. *Fungal Biol.* 116(7):825–835.
- Michalak P. 2008. Coexpression, coregulation, and cofunctionality of neighboring genes in eukaryotic genomes. *Genomics* 91(3):243–248.
- Moreno-Hagelsieb G, Latimer K. 2008. Choosing BLAST options for better detection of orthologs as reciprocal best hits. *Bioinformatics* 24(3):319–324.
- Petersen TN, Brunak S, von Heijne G, Nielsen H. 2011. SignalP 4.0: discriminating signal peptides from transmembrane regions. *Nat Methods* 8(10):785–786.
- Quesneville H, et al. 2005. Combined evidence annotation of transposable elements in genome sequences. *PLoS Comput Biol.* 1(2):e22.
- Quinlan AR, Hall IM. 2010. BEDTools: a flexible suite of utilities for comparing genomic features. *Bioinformatics* 26(6):841–842.
- R. Core Team 2017. R: a language and environment for statistical computing. Vienna (Austria): R Foundation for Statistical Computing, Available from: <http://www.R-project.org/>
- Rouxel M, et al. 2014. Geographic distribution of cryptic species of *Plasmopara viticola* causing downy mildew on wild and cultivated grape in eastern North America. *Phytopathology* 104(7):692–701.
- Rouxel M, et al. 2013. Phylogenetic and experimental evidence for host-specialized cryptic species in a biotrophic oomycete. *New Phytol.* 197(1):251–263.
- Roy S, Kagda M, Judelson HS. 2013. Genome-wide prediction and functional validation of promoter motifs regulating gene expression in spore and infection stages of *Phytophthora infestans*. *PLoS Pathog.* 9(3):e1003182.
- Saunders DGO, Win J, Kamoun S, Raffaele S. 2014. Two-dimensional data binning for the analysis of genome architecture in filamentous plant pathogens and other eukaryotes. In: Birch P, Jones J, Bos J, editors. *Plant-pathogen interactions*. Totowa (NJ): Humana Press. p. 29–51.
- Savory EA, et al. 2012. Alternative splicing of a multi-drug transporter from *Pseudoperonospora cubensis* generates an RXLR effector protein that elicits a rapid cell death. *PLoS One* 7(4):e34701.
- Scott MS, Ono M. 2011. From snoRNA to miRNA: dual function regulatory non-coding RNAs. *Biochimie* 93(11):1987–1992.
- Sharma R, et al. 2015. Genome analyses of the sunflower pathogen *Plasmopara halstedii* provide insights into effector evolution in downy mildews and *Phytophthora*. *BMC Genomics* 16(1):741.
- Simão FA, Waterhouse RM, Ioannidis P, Kriventseva EV, Zdobnov EM. 2015. BUSCO: assessing genome assembly and annotation completeness with single-copy orthologs. *Bioinformatics* 31(19):3210–3212.



- Del Sorbo G, Schoonbeek H, De Waard MA. 2000. Fungal transporters involved in efflux of natural toxic compounds and fungicides. *Fungal Genet Biol.* 30(1):1–15.
- Storey JD, Tibshirani R. 2003. Statistical significance for genomewide studies. *Proc Natl Acad Sci USA.* 100(16):9440–9445.
- Thines M. 2011. Recent outbreaks of downy mildew on grape ivy (*Parthenocissus tricuspidata*, Vitaceae) in Germany are caused by a new species of *Plasmopara*. *Mycol Prog.* 10(4):415–422.
- Thines M, Kamoun S. 2010. Oomycete–plant coevolution: recent advances and future prospects. *Curr Opin Plant Biol.* 13(4):427–433.
- Tyler BM, et al. 2006. *Phytophthora* genome sequences uncover evolutionary origins and mechanisms of pathogenesis. *Science* 313(5791):1261–1266.
- Vetukuri RR, et al. 2011. Evidence for involvement of Dicer-like, Argonaute and histone deacetylase proteins in gene silencing in *Phytophthora infestans*. *Mol Plant Pathol.* 12(8):772–785.
- Voglmayr H, Greilhuber J. 1998. Genome size determination in *Peronosporales* (Oomycota) by Feulgen image analysis. *Fungal Genet Biol.* 25(3):181–195.
- Wahl R, Wippel K, Goos S, Kämper J, Sauer N. 2010. A novel high-affinity sucrose transporter is required for virulence of the plant pathogen *Ustilago maydis*. *PLoS Biol.* 8(2):e1000303.
- Walker BJ, et al. 2014. Pilon: an integrated tool for comprehensive microbial variant detection and genome assembly improvement. *PLoS One* 9(11):e112963.
- Wang L, et al. 2014. 3′ Untranslated regions mediate transcriptional interference between convergent genes both locally and ectopically in *Saccharomyces cerevisiae*. *PLoS Genet.* 10(1):e1004021.
- Weiberg A, Jin H. 2015. Small RNAs—the secret agents in the plant–pathogen interactions. *Curr Opin Plant Biol.* 26:87–94.
- Whisson SC, et al. 2007. A translocation signal for delivery of oomycete effector proteins into host plant cells. *Nature* 450(7166):115–118.
- Williams EJB, Bowles DJ. 2004. Coexpression of neighboring genes in the genome of *Arabidopsis thaliana*. *Genome Res.* 14(6):1060–1067.
- Win J, et al. 2007. Adaptive evolution has targeted the C-terminal domain of the RXLR effectors of plant pathogenic oomycetes. *Plant Cell* 19(8):2349–2369.
- Xiang J, et al. 2017. A candidate RxLR effector from *Plasmopara viticola* can elicit immune responses in *Nicotiana benthamiana*. *BMC Plant Biol.* 17(1):75.
- Xiang J, et al. 2016. Studying the mechanism of *Plasmopara viticola* RxLR effectors on suppressing plant immunity. *Front Microbiol.* 7:709.
- Yang Z. 2007. PAML 4: phylogenetic analysis by maximum likelihood. *Mol Biol Evol.* 24(8):1586–1591.
- Yin L, et al. 2015. Characterization of the secretome of *Plasmopara viticola* by *de novo* transcriptome analysis. *Physiol Mol Plant Pathol.* 91:1–10.
- Yin L, et al. 2017. Genome sequence of *Plasmopara viticola* and insight into the pathogenic mechanism. *Sci Rep.* 7:46553.
- Zeng Y, Yang T. 2002. RNA isolation from highly viscous samples rich in polyphenols and polysaccharides. *Plant Mol Biol Rep.* 20(4):417–417.
- Zhang J, Nielsen R, Yang Z. 2005. Evaluation of an improved branch-site likelihood method for detecting positive selection at the molecular level. *Mol Biol Evol.* 22(12):2472–2479.

Associate editor: Hidemi Watanabe