



HAL
open science

Soil test phosphorus and cumulative phosphorus budgets in fertilized grassland

Aimé Jean Messiga, Noura Ziadi, Claire Jouany, Perttu Virkajarvi, Raija Suomela, Sokrat Sinaj, Gilles Bélanger, Ciprian Stroia, Christian Morel

► To cite this version:

Aimé Jean Messiga, Noura Ziadi, Claire Jouany, Perttu Virkajarvi, Raija Suomela, et al.. Soil test phosphorus and cumulative phosphorus budgets in fertilized grassland. *AMBIO: A Journal of Environment and Society*, 2015, 44 (2), pp.S252-S262. 10.1007/s13280-015-0628-x . hal-02633067

HAL Id: hal-02633067

<https://hal.inrae.fr/hal-02633067>

Submitted on 27 May 2020

HAL is a multi-disciplinary open access archive for the deposit and dissemination of scientific research documents, whether they are published or not. The documents may come from teaching and research institutions in France or abroad, or from public or private research centers.

L'archive ouverte pluridisciplinaire **HAL**, est destinée au dépôt et à la diffusion de documents scientifiques de niveau recherche, publiés ou non, émanant des établissements d'enseignement et de recherche français ou étrangers, des laboratoires publics ou privés.

Soil test phosphorus and cumulative phosphorus budgets in fertilized grassland

Aimé Jean Messiga, Noura Ziadi, Claire Jouany,
Perttu Virkajärvi, Raija Suomela, Sokrat Sinaj,
Gilles Bélanger, Ciprian Stroia, Christian Morel

Abstract We analyzed the linearity of relationships between soil test P (STP) and cumulative phosphorus (P) budget using data from six long-term fertilized grassland sites in four countries: France (Ercé and Gramond), Switzerland (Les Verrières), Canada (Lévis), and Finland (Maaninka and Siikajoki). STP was determined according to existing national guidelines. A linear-plateau model was used to determine the presence of deflection points in the relationships. Deflection points with (x, y) coordinates were observed everywhere but Maaninka. Above the deflection point, a significant linear relationship was obtained ($0.33 < r^2 < 0.72$) at four sites, while below the deflection point, the relationship was not significant, with a negligible rate of STP decrease. The relationship was not linear over the range of STP encountered at most sites, suggesting a need for caution when using the P budget approach to predict STP changes in grasslands, particularly in situations of very low P fertilization. Our study provides insights and description of a tool to improve global P strategies aimed at maintaining STP at levels adequate for grassland production while reducing the risk of P pollution of water.

Keywords Fertilization · Grassland · Long-term field experiments · Phosphorus · Phosphorus budget · Soil test P

INTRODUCTION

The difference between fertilizer phosphorus (P) inputs and crop P exports, referred to as the P budget, is often used to assess P management in agroecosystems (Watson et al. 2002; Serrano et al. 2014) and to predict soil P changes over time (Messiga et al. 2012a; Morel et al. 2014). The annual P budget is the key component of global P strategies

aimed at lowering the P content of P-saturated soils and monitoring the risks of P pollution of water (Reijneveld et al. 2010). In Finland, negative P budgets are recommended to farmers to reduce the high soil P content of their soils (Saarela et al. 2004; Valkama et al. 2009). In France, the national P budget was reduced to $4.4 \text{ kg ha}^{-1} \text{ year}^{-1}$ in 2006 as a result of reducing P inputs to agricultural soils (Senthilkumar et al. 2012a), while it decreased steadily in Switzerland during the period 1975–2008, to stabilize at $5.5 \text{ kg ha}^{-1} \text{ year}^{-1}$ (Oehl et al. 2002; Spiess 2011). In North America, particularly eastern Canada, less emphasis is placed on the P budget in P fertilizer recommendations; instead the probability of an economic response of crop yield to P fertilizer applications is the central concept of P fertilization strategies (CRAAQ 2010).

Results from long-term experiments with annual field crops (Morel et al. 2000; Tunney et al. 2003) and perennial grass crops (Messiga et al. 2014a; Morel et al. 2014) have shown that soil test P (STP) is closely and positively related to cumulative P budget (B_{cumP}). This relationship has been shown to vary with location (Blake et al. 2003), soil type (Ciampitti et al. 2011), crop rotation (Oehl et al. 2002), and tillage system (Messiga et al. 2012b). However, for a given site, it is not affected by different rates of N fertilization applied to forage grasses (Messiga et al. 2014a). Studies with annual field crops have shown that a single linear regression can describe changes in STP for both negative and positive P budgets (Blake et al. 2003). For instance, Messiga et al. (2010) grouped data from a maize (*Zea mays* L.) monoculture in France following 7, 12, and 17 years of cultivation and demonstrated that a single linear regression described changes in STP over the three periods. This indicated no or little variation between the parameters of the linear regression in this maize monoculture for a wide range of STP and B_{cumP} .

The linearity of the STP– B_{cumP} relationship over a wide range of STP values as a result of varying P fertilization rates has not yet been studied in long-term and semi-permanent grasslands. In zero-P plots, Ma et al. (2009) reported that STP decreases with time until no further additional decrease can be observed. Under fertilized no-till management systems, Messiga et al. (2012b) observed a more than proportional change in STP for a unit of P budget due to the effect of residual P derived from fertilizer. The P fertilizer applied to grassland is not mixed with the soil and crop residues (Whitehead 2000).

In this study, we hypothesized that in long-term grassland fertilized with varying P rates, the relationship between STP and B_{cumP} will not be linear over a wide range of STP values. To investigate this, we assembled a dataset of cumulative P budgets and STP values from six long-term grassland sites with different soil characteristics in four countries (Canada, Finland, France, and Switzerland). The objective of the study was to analyze the linearity of the relationship between STP and B_{cumP} in a number of grassland experiments covering a wide range of STP values, obtained as a result of long-term applications of varying P fertilizer rates. To set future national P budget targets that account for both grassland production and water protection, improved and updated knowledge about long-term impacts of current global P management strategies on changes of STP levels is needed.

MATERIALS AND METHODS

Site description and fertilization treatments

Ercé and Gramond, France

Two experiments on semi-permanent grassland were conducted in the French Pyrenees, France (Table 1). An experiment at Ercé was established in 1999 on an Alfisol (U.S. Soil Taxonomy, Soil Survey Staff 2010) developed on alluvium. An experiment at Gramond was initiated in 1998 on an Inceptisol developed on mica schist. The two

grassland sites had a mixture of grass species. The mean annual air temperatures are 12.7 and 11 °C, and the mean annual rainfall rates are 1200 and 960 mm at the Ercé and Gramond sites, respectively. Both experiments consisted of two annual rates of P fertilizer (0 (P_0) and 50 (P_{50}) kg P ha⁻¹) supplied in February as triple super phosphate (TSP, 20 % P) on plots measuring 20 m² (5 m × 4 m) and arranged in four randomized blocks (Table 2). Nitrogen was applied as commercial ammonium nitrate (NH₄NO₃) at rates of 100 kg N ha⁻¹ in February and 60 kg N ha⁻¹ after the first cut. Potassium was added as potassium chloride (KCl) at a rate of 199 kg K ha⁻¹ in all treatments once a year in February to maintain an unlimited K supply.

Les Verrières, Switzerland

A permanent grassland experiment was established in 1993 on a Cambisol at Les Verrières, Switzerland (Table 1), with a mixture of red fescue (*Festuca rubra* L.), common bent (*Agrostis capillaris* L.), and orchardgrass (*Dactylis glomerata* L.). The mean annual air temperature at the site is 5.8 °C, and the mean annual rainfall is 1400 mm. The experiment consisted of four application rates of P fertilizer (0 (P_0), 9 (P_9), 17 (P_{17}), and 26 (P_{26}) kg P ha⁻¹), in plots measuring 30 m² (10 m × 3 m) arranged in three randomized blocks (Table 2). The P treatments were applied in a single application as TSP (20 % P) in October. Potassium was applied as KCl (58 kg K ha⁻¹) in a single application in October, while N was applied at a rate of 25 kg N ha⁻¹ as commercial ammonium nitrate in all treatments once a year after the first cut.

Lévis, Canada

A grassland experiment was established in 1998 on a Fragihumod at Lévis, Canada (Table 1), with timothy (*Phleum pratense* L. cv. Champ). The mean annual air temperature at that site is 4 °C, and the mean annual rainfall is 692 mm. The experimental design was a split plot, with four application rates of P fertilizer as TSP (20 % P): 0 (P_0), 15 (P_{15}), 30 (P_{30}), and 45 (P_{45}) kg P ha⁻¹

Table 1 Location of the six study sites and their clay, sand, and soil carbon content, and soil pH

Sites	Country	Longitude/Latitude	Clay (%)	Sand (%)	Soil carbon (%)	pH
Ercé	France	0°E, 43°N	25.1	25.0	5.7	5.9
Gramond	France	2°E, 44°N	21.4	56.6	3.7	5.5
Les Verrières	Switzerland	7°E, 47°N	28.0	20.9	7.9	5.4
Lévis	Canada	71°W, 46°N	–	–	2.6	5.8
Maaninka	Finland	27°E, 63°N	6.0	66.5	1.6	–
Siikajoki	Finland	25°E, 64°N	8.0	75.3	2.8	–

Table 2 Phosphorus (P), nitrogen (N), and potassium (K) fertilization rates, soil sampling depth, study period, and soil test phosphorus analysis at the six study sites

Sites	Country	P rate (kg ha ⁻¹)	N rate (kg ha ⁻¹)	K rate (kg ha ⁻¹)	Soil sampling depth (cm)	Study period	Soil test P
Ercé	France	0, 50	160	199	0–5	1999–2011	Olsen
Gramond	France	0, 50	160	199	0–5	1998–2011	Olsen
Les Verrières	Switzerland	0, 9, 17, 26	25	58	0–10	1992–2008	Ammonium acetate, acetic acid, EDTA
Lévis	Canada	0, 15, 30, 45	120	84	0–15	1998–2006	Mehlich-3
Maaninka	Finland	0, <i>x</i> (8–25)	200	50	0–20	2003–2010	Acid ammonium acetate
Siikajoki	Finland	0, <i>x</i> (8–25)	200	50	0–20	2003–2010	Acid ammonium acetate

x corresponds to annual local recommendations: 25 kg P ha⁻¹ in 2003 (establishment year); 10 kg P ha⁻¹ in 2004, 2005, and 2006 (established swards); 20 kg P ha⁻¹ in 2007 (second establishment year); 8 kg P ha⁻¹ in 2008, 2009, 2010, and 2011 (established swards)

assigned to main plots, and four annual applications of N fertilizer (calcium ammonium nitrate): 0 (N_0), 60 (N_{60}), 120 (N_{120}), and 180 (N_{180}) kg N ha⁻¹ assigned to subplots (Table 2). Experimental treatments were replicated in four blocks, with individual plots measuring 3.15 m² (2.1 m × 1.5 m). For this study, subplots receiving the four P treatments and 120 kg N ha⁻¹ were selected within the experimental setup. From 1999 to 2006, fertilizers were broadcast each year prior to the start of growth in the first week of May. Potassium (KCl) at 84 kg K ha⁻¹ was applied simultaneously with P and N to ensure that plant growth was not limited by K.

Maaninka and Siikajoki, Finland

Two experiments with sown swards were initiated in 2003 in Finland, at MTT Maaninka on an Entisol and at MTT Siikajoki on a Sulfaquept (Table 1). The mean annual air temperatures are 3.1 and 2.6 °C, and the mean annual rainfall rates are 611 and 538 mm at the Maaninka and Siikajoki sites, respectively. The experiments consisted of either no P fertilizer or annual local recommendations; i.e., 25 kg P ha⁻¹ in 2003 (establishment year); 10 kg P ha⁻¹ in 2004, 2005, and 2006 (established sward); 20 kg P ha⁻¹ in 2007 (second establishment year); and 8 kg P ha⁻¹ in 2008, 2009, 2010, and 2011 (established sward) (Table 2). Phosphorus applications were larger in establishment years (2003, 2007) than on established swards to minimize the need for surface P application and, consequently, to decrease P losses in surface run-off, which is the most hazardous form of P losses in Finland (Uusi-Kämpä and Heinonen-Tanski 2008). Phosphorus was applied in a single application in mid-May as TSP (20 % P). Experimental plots were 15 m² (10 m × 1.5 m) at Maaninka and 12 m² (8 m × 1.5 m) at Siikajoki and arranged in a randomized complete block design replicated four times. In the establishment year, a nurse crop (winter barley *Hordeum vulgare* L.) and a mixture (70/30 w/w) of timothy (*Phleum*

pratense L. cv. Tuukka; 10 kg ha⁻¹) and meadow fescue (*Festuca pratensis* Huds. cv. Ilmari at Maaninka and cv. Kasper at Siikajoki; 15 kg ha⁻¹) were seeded. Nitrogen was applied at a rate of 80 kg N ha⁻¹ and K at a rate of 50 kg K ha⁻¹ in 2003 and 2007, as commercial compound fertilizers. The established swards received 200 kg N ha⁻¹ annually divided into two applications, the first in mid-May and the second combined with 35 kg K ha⁻¹ immediately after the first cut in mid-June.

Sample collection and analysis

Soil samples were collected at Ercé and Gramond from 2001 to 2006; at Les Verrières in 1993, 1995, 2001, 2005, and 2008; at Lévis from 2001 to 2006; and at Maaninka and Siikajoki from 2003 to 2010. All soils were collected prior to fertilizer application, air-dried, passed through a 2-mm sieve, and stored at room temperature before analysis. Sampling depth and STP determination were based on existing recommendations in each country: 0–5 cm and Olsen extractable P (P_{OI}) for Ercé and Gramond (Olsen et al. 1954); 0–10 cm and a mixture of 0.5 M ammonium acetate, 0.5 M acetic acid, and 0.02 M EDTA extractable P (P_{AAE}) for Les Verrières (Demaria et al. 2005); 0–15 cm and Mehlich-3 extractable P (P_{M3}) for Lévis (Mehlich 1984); and 0–20 cm and acidic ammonium acetate extractable P (P_{AAC}) for Maaninka and Siikajoki (Vuorinen and Mäkitie 1955) (Table 2). All sites were ungrazed, so there was no P return as livestock manure. At each site, the forage crop was harvested twice a year and dry matter (DM) yield was recorded. At Maaninka and Siikajoki, winter barley was harvested in August between 2003 and 2007. Forage P concentrations were determined on samples from Maaninka and Siikajoki following thermal oxidation at 550 °C and dissolution with HCl, and at the other sites using a mixture of sulfuric and selenious acids, as described by Isaac and Johnson (1976). The P removal for an individual cut was calculated by multiplying the forage

DM yield by its P concentration. For a given year, annual P removal was obtained as the sum of P removal with the two cuts. The annual P budget was calculated as the difference between P applied as fertilizer and annual P removal, and B_{cumP} was calculated by summing up the annual P budgets (Messiga et al. 2012a, b, 2014a).

Data analysis

Data normality was verified using the Shapiro–Wilk statistic, and homogeneity was verified visually with graphics of the residuals (SAS Institute Inc. 2001). Analysis of variance was conducted for each site using the MIXED procedure of SAS. For B_{cumP} , P_{M3} , P_{OI} , P_{AAC} , and P_{AAE} , the factors considered in the analysis of variance were replicate as random effect, year as repeated measurement, and P application as fixed effect. Differences between least square means (LSMEANS) for all treatment pairs were tested at a significance level of $P = 0.05$. In addition, linear and quadratic effects of P fertilizers on STP were determined for the Les Verrières and Lévis sites using polynomial contrasts. A linear-plateau model (SAS Institute Inc. 2001) was used to fit the STP data to B_{cumP} . When the linear-plateau model was significant, a deflection point (the point where two straight-line regressions intersect) with (x, y) coordinates in the range of data of STP plotted against B_{cumP} was determined. When the linear-plateau model was not significant, the parameters of the linear regressions between STP and B_{cumP} were estimated using the REG procedure of SAS.

RESULTS AND DISCUSSION

Cumulative phosphorus budget

The value of B_{cumP} varied greatly across sites and P application rates, from a minimum of $-287 \text{ kg P ha}^{-1}$ at Gramond (Fig. 1b) after nine years without any P application to a maximum of 209 kg P ha^{-1} at Lévis (Fig. 1d) after eight years of P application. At all sites and for the years following the start of the experiments, B_{cumP} significantly differed between P application rates (Fig. 1). Negative and decreasing B_{cumP} values were associated with annual P applications lower than 15 kg P ha^{-1} (Fig. 1a,b), while positive and increasing B_{cumP} values were associated with annual P applications greater than or equal to 26 kg P ha^{-1} .

In the two experiments in France, the average annual P budget for the P_{50} treatment was $8 \text{ kg P ha}^{-1} \text{ year}^{-1}$ at Ercé (Fig. 1a) and $11 \text{ kg P ha}^{-1} \text{ year}^{-1}$ at Gramond (Fig. 1b). These values are within the range of annual P budgets observed in 21 French agricultural regions (Senthilkumar

et al. 2012b) and comparable to the $8 \text{ kg P ha}^{-1} \text{ year}^{-1}$ average P surplus reported for the European Union (Richards and Dawson 2008; Smit et al. 2009). In France, the national annual P budget in 2006 was 4 kg P ha^{-1} as a result of a national strategy to decrease the total P inflow to soils (Senthilkumar et al. 2012a). Our results indicate that annual applications of less than 50 kg P ha^{-1} are needed to reach this national target on French semi-permanent grasslands.

In the Swiss experiment, the average annual P budget was 10, 2, and $-2 \text{ kg P ha}^{-1} \text{ year}^{-1}$ for the P_{26} , P_{17} , and P_9 treatments, respectively (Fig. 1c). The current national mean P budget in Switzerland is 5.5 kg P ha^{-1} as a result of direct payments to farmers for environmental programs aimed at decreasing nutrient surpluses (Spiess 2011). Our results indicate that to meet this target, the annual P application to grasslands should be less than 26 kg P ha^{-1} .

In the experiment conducted in eastern Canada, the average annual P budgets were 26, 10, and -4.5 for the P_{45} , P_{30} , and P_{15} treatments, respectively (Fig. 1d). Local recommendations in eastern Canada are based on P_{M3} and Mehlich-3 extractable Al (Al_{M3}) content. For soils with P_{M3} ($61\text{--}90 \text{ kg P ha}^{-1}$) and Al_{M3} ($1100\text{--}1600 \text{ mg Al ha}^{-1}$), i.e., values similar to those of the Lévis site, the recommended P application rate ranges from 24 to 37 kg P ha^{-1} (CRAAQ 2010). Our results suggest that for this fertility class, fertilizer P recommendations will mostly lead to positive B_{cumP} values in grassland and, consequently, to the build-up of STP and greater associated risks of P losses. In addition, continuous build-up of STP will decrease the probability of a positive yield response to fertilizer P application.

In the Finnish experiments, the average annual P budget for the fertilized plots was $-8 \text{ kg P ha}^{-1} \text{ year}^{-1}$ at Maaninka and $-9 \text{ kg P ha}^{-1} \text{ year}^{-1}$ at Siikajoki. This negative B_{cumP} with the P_x treatments at both sites (Fig. 1e, f) confirms that P applications corresponding to local recommendations (Valkama et al. 2009) were lower than P removal. The national average application of fertilizer P in Finland was about 30 kg P ha^{-1} in the 1970s and 1980s, but dropped to 12 kg P ha^{-1} during the 1990s in order to reduce the P status of cultivated soils (Saarela et al. 2004). As a consequence of the P fertilization regulations of the national agri-environmental support system since 1995, the national mean P budget decreased from 20 to $8 \text{ kg P ha}^{-1} \text{ year}^{-1}$ during the period 1990–2004 (Organization for Economic Cooperation and Development 2008). The consequence of current Finnish fertilizer P recommendations for grassland, as observed at Maaninka and Siikajoki, is a negative P budget. This is in line with the Helsinki Convention (Helsinki Commission 2005), which has adopted targets to reduce P discharge to waters by 50 % and to improve agricultural practices to maintain or even increase yield levels while lowering nutrient inputs.

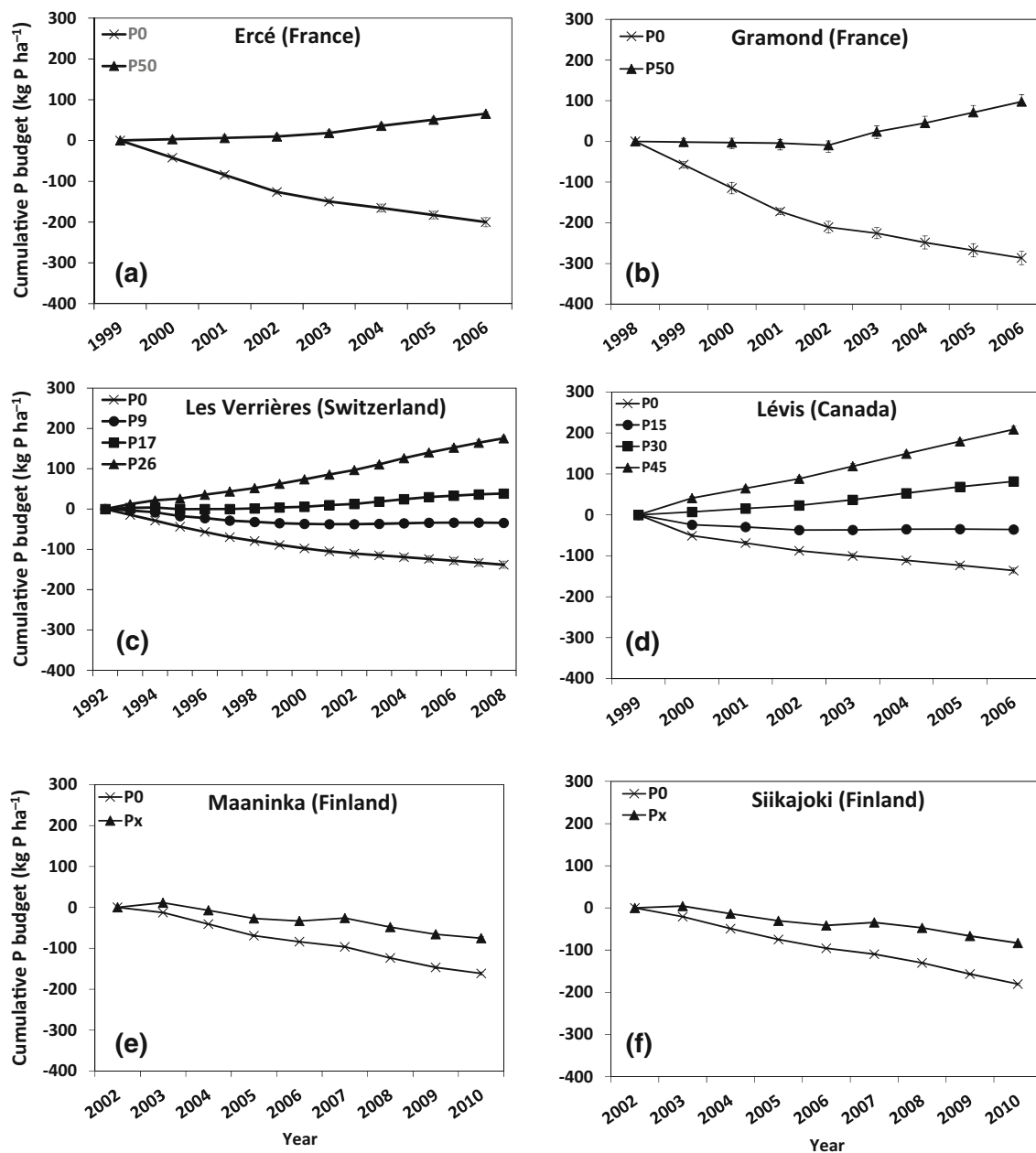


Fig. 1 Changes in cumulative P budget at six grassland sites fertilized with various P applications over several years: **a** Ercé, **b** Gramond, **c** Les Verrières, **d** Lévis, **e** Maaninka, and **f** Siikajoki. Error bars represent ± 1 SD of the mean ($n = 4$). P_x corresponds to annual local P application recommendations at the two Finnish sites (8–25 kg P ha⁻¹)

Soil test phosphorus

The concentration of P_{O1} at Ercé and Gramond was significantly ($P < 0.001$) increased by P application, but the extent of the increase varied with year (P application \times year, $P = 0.002$ at Ercé and $P < 0.001$ at Gramond). This positive effect of P application occurred in all years, but the extent of the effect varied slightly from year to year and with no clear trend. The concentration of P_{O1} at Ercé varied from 10.3 mg kg⁻¹ in 2003 for the P_0 treatment to 45.3 mg kg⁻¹ in

2007 for the P_{50} treatment (Fig. 2a), while at Gramond, it varied from 20.6 mg kg⁻¹ in 2001 for the P_0 treatment to 87.9 mg kg⁻¹ in 2004 for the P_{50} treatment (Fig. 2b).

The concentration of P_{AAE} at Les Verrières was significantly affected by P application, and the extent of change was affected by year (P application \times year, $P < 0.001$). The P_{AAE} concentration varied from a minimum of 6.7 mg kg⁻¹ in 2008 for the P_0 treatment to a maximum of 68.4 mg kg⁻¹ in 2008 for the P_{26} treatment (Fig. 2c). It significantly increased with time for the P_{17}

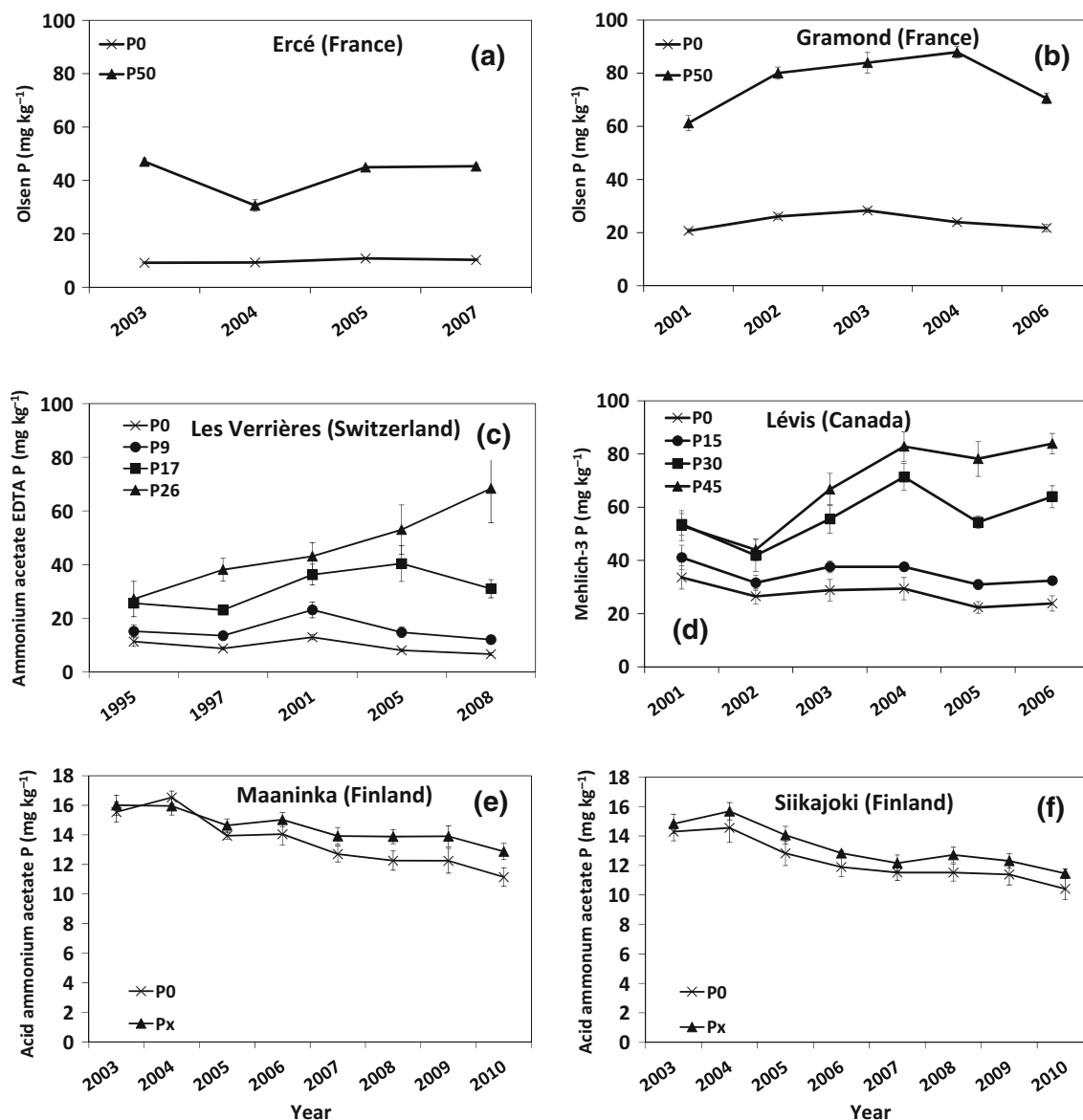


Fig. 2 Changes in soil test P at six grassland sites fertilized with various P applications over several years: **a** Ercé, **b** Gramond, **c** Les Verrières, **d** Lévis, **e** Maaninka, and **f** Siikajoki. Error bars represent ± 1 SD of the mean ($n = 4$). P_x corresponds to annual local P application recommendations at the two Finnish sites ($8\text{--}25 \text{ kg P ha}^{-1}$)

and P_{26} treatments, and decreased slightly with time for the P_9 and P_0 treatments. Overall, P_{AAE} values tended to have a quadratic relationship with P application rate.

The concentration of P_{M3} at Lévis was significantly influenced by P application ($P < 0.001$), and the extent of change was affected by year (P application \times year, $P < 0.001$). The P_{M3} concentration varied from a minimum of 23.8 mg kg^{-1} in 2006 for P_0 to a maximum of 83.9 mg kg^{-1} in 2006 for P_{45} (Fig. 2d). It significantly increased with time for the P_{30} and P_{45} treatments, and decreased with time for the P_0 and P_{15} treatments. Overall, P_{M3} values tended to have a linear relationship with P application rate.

The concentration of P_{AAC} at Maaninka was significantly influenced by P application ($P = 0.011$) and year ($P < 0.001$). It varied from 15.5 mg kg^{-1} in 2003 to 11.0 mg kg^{-1} in 2010 for the P_0 treatment and from 16.0 mg kg^{-1} in 2003 to 12.8 mg kg^{-1} in 2010 for the P_x treatment (Fig. 2e). The concentration of P_{AAC} at Siikajoki was not significantly influenced by P application, but significantly decreased with time ($P < 0.001$) from 14.9 mg kg^{-1} in 2003 to 10.9 mg kg^{-1} in 2010 (Fig. 2f).

Similarly, STP concentrations have been reported in other grassland studies with varying P application rates in France (Jouany et al. 2004), Switzerland (Gallet et al.

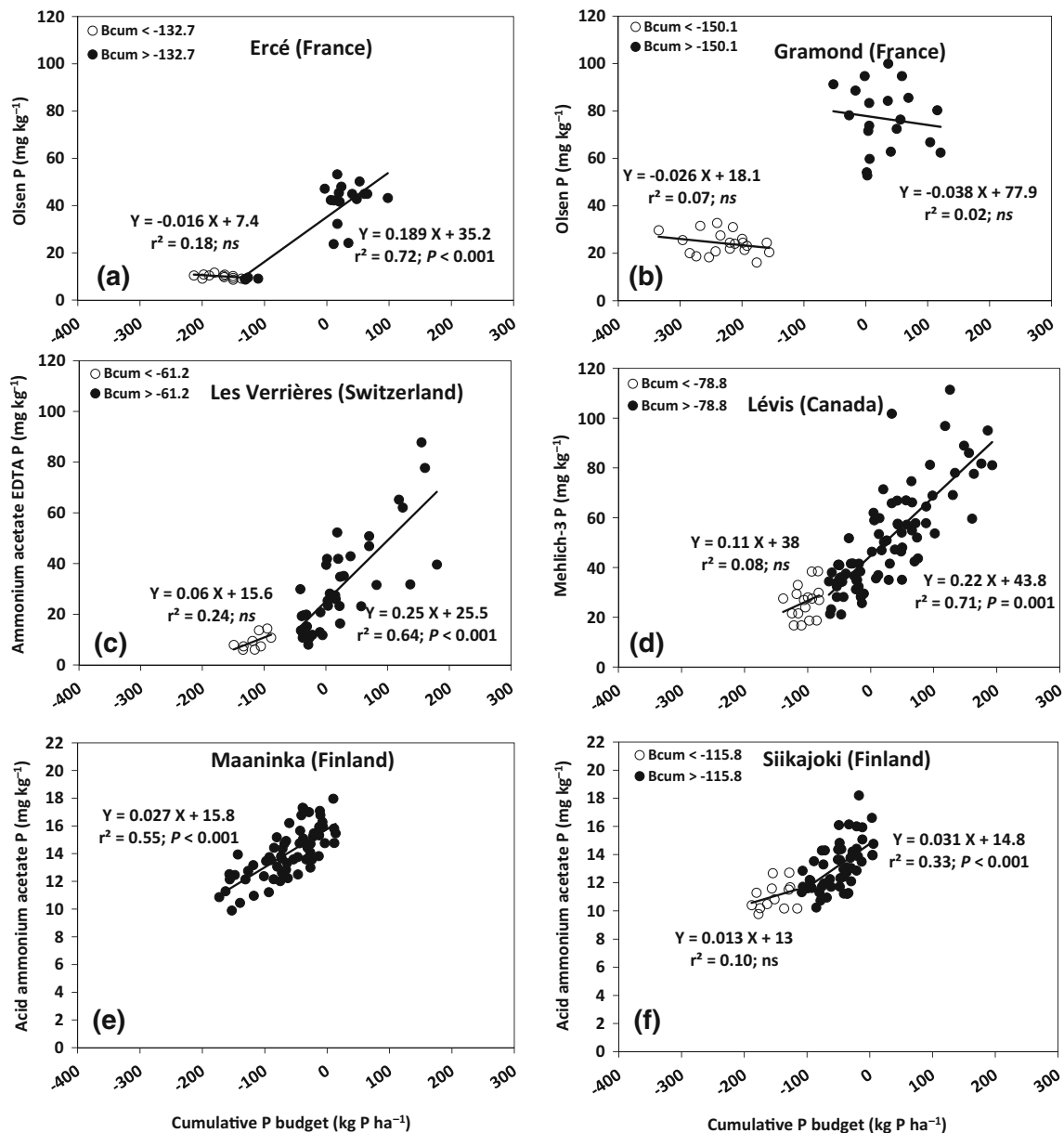


Fig. 3 Relationship between soil test P and cumulative P budget (B_{cumP}) at six grassland sites fertilized with various P applications over several years: **a** Ercé, **b** Gramond, **c** Les Verrières, **d** Lévis, **e** Maaninka, and **f** Siikajoki. ns not significant ($P > 0.05$)

2003), Canada (Malhi et al. 2003, 2009), and Finland (Lkhagvasuren et al. 2011), indicating that soil type, soil P content, and management practices encountered in our long-term experiments were representative of grassland management systems in the respective countries.

Differences between the P_0 treatment and P-fertilized plots (i.e., P_{50} for Ercé and Gramond, P_{17} and P_{26} for Les Verrières, and P_{30} and P_{45} for Lévis) in terms of STP concentrations could be explained by high residual P from fertilizer applied in the P-fertilized plots. The P fertilizer applied to grassland is not mixed with the soil and crop

residues, but broadcast on the surface (Whitehead 2000). The transformation of residual P derived from fertilizer to less labile forms might be limited in grassland as this broadcast fertilizer P interacts with plant residues, blocking the sorption sites and, therefore, their adsorption or fixation on the solid phase (Messiga et al. 2012b). Grass stands and residues may alter P availability in fertilized grassland soils by reducing the transformation of soluble P derived from fertilizers to less labile forms by (i) organic anion replacement by H_2PO_4 on adsorption sites, (ii) coating of Fe and Al oxides by humus to form a protective cover and

reduce P adsorption, and (iii) formation of stable organic complexes with Fe and Al, preventing their reaction with H_2PO_4 (Havlin et al. 2014). In addition, the limited transfer of residual P from the enriched upper layer to depleted lower layers due to the low mobility of P also contributes to differences in STP between unfertilized and P-fertilized plots (Messiga et al. 2013).

Relationship between soil test P and cumulative P budget

The STP generally increased with increasing B_{cumP} at all sites. At five of the six sites, however, a deflection point was observed with (x, y) coordinates of $-133 \text{ kg P ha}^{-1}$ and $10.1 \text{ mg } P_{\text{OI}} \text{ kg}^{-1}$ at Ercé (Fig. 3a); $-150 \text{ kg P ha}^{-1}$ and $22.0 \text{ mg } P_{\text{OI}} \text{ kg}^{-1}$ at Gramond (Fig. 3b); -61 kg P ha^{-1} and $9.3 \text{ mg } P_{\text{AAE}} \text{ kg}^{-1}$ at Les Verrières (Fig. 3c); -79 kg P ha^{-1} and $26.4 \text{ mg } P_{\text{M}_3} \text{ kg}^{-1}$ at Lévis (Fig. 3d); and $-116 \text{ kg P ha}^{-1}$ and $11.3 \text{ mg } P_{\text{AAC}} \text{ kg}^{-1}$ at Siikajoki (Fig. 3f). At Maaninka, however, no deflection point was observed in the relationship between STP and B_{cumP} (Fig. 3e).

Above the deflection point, the fitted linear regression lines were significant ($0.33 < r^2 < 0.72$) for Ercé, Les Verrières, Lévis, and Siikajoki, but not for Gramond (Fig. 3). Using the slope of the linear regression above the deflection point at four of the sites and for the whole range of data at Maaninka, we calculated that a change in P budget of 100 kg P ha^{-1} would result in a change of $18.9 \text{ mg } P_{\text{OI}} \text{ kg}^{-1}$ at Ercé (Fig. 3a), $25 \text{ mg } P_{\text{AAE}} \text{ kg}^{-1}$ at Les Verrières (Fig. 3c), $22 \text{ mg } P_{\text{M}_3} \text{ kg}^{-1}$ at Lévis (Fig. 3d), $2.7 \text{ mg } P_{\text{AAC}} \text{ kg}^{-1}$ at Maaninka (Fig. 3e), and $3.1 \text{ mg } P_{\text{AAC}} \text{ kg}^{-1}$ at Siikajoki (Fig. 3f). The STP changes for a unit of P budget estimated in this study tended to be greater than values encountered in other field crops under conventionally tilled soils. For example, in a long-term maize monoculture under conventional tillage, Messiga et al. (2010) reported a change of $3.3 \text{ mg } P_{\text{OI}} \text{ kg}^{-1}$ and $14 \text{ mg } P_{\text{M}_3} \text{ kg}^{-1}$ for a change in P budget of 100 kg P ha^{-1} . Zhang et al. (1995) reported a change of $7 \text{ mg } P_{\text{M}_3} \text{ kg}^{-1}$ in a maize monoculture under conventional tillage in eastern Canada. We could not find values for P_{AAC} and P_{AAE} in the literature due to a lack of similar studies in the corresponding countries. The greater change rates obtained under grassland indicate the maintenance of high residual P derived from fertilizer. Messiga et al. (2012b) obtained a high change rate of STP for a unit of P budget under no-till systems that translated into a polynomial distribution of STP data plotted against P budget. Soil sampling procedures can also introduce some variability in grassland samples, leading to greater soil test P. For example, shallow soil sampling at Ercé (0–5 cm), Les Verrières (0–10 cm), and, to some extent, Lévis (0–15 cm) resulted in greater change rates compared with Maaninka and

Siikajoki (0–20 cm). Differences between extraction methods across the locations could also explain the differences in change rates, but it is difficult to draw conclusions on this point because the effects of this parameter were not tested at our study locations.

Below the deflection point, however, the fitted regression lines were not significant at the sites tested, and there was a slow or negligible STP decline in the absence of P fertilization. The differing relationships between STP and B_{cumP} on either side of the deflection point observed at Ercé, Les Verrières, Lévis, and Siikajoki have also been reported in other field crop studies (Webb et al. 1992; Ciampitti et al. 2011). This slow or negligible STP decline in the absence of P fertilization might be explained by the high buffering capacity of the solid phase (Power et al. 2005; Tunney et al. 2010). Ma et al. (2009) reported that in soils with field crops grown for several years without P fertilization, P_{OI} always decreases before stabilizing at a lower limit of 3 mg kg^{-1} despite further net losses of soil P. In a recent study, Messiga et al. (2014b) assessed the depletion of soil P following sequential extractions at several sites in eastern Canada, including the Lévis site, and found that the concentration of P_{OI} by the end of the series of extractions remained constant at 2 mg kg^{-1} . At the Rothamsted experimental site, a negative P budget of $-509 \text{ kg P ha}^{-1}$ was obtained for the period 1901–1974, but the decrease in P_{OI} in the top 23 cm accounted for only 182 kg P ha^{-1} or 36 % of the total P removed in the crops grown in this period (Johnston and Poulton 1977). In another long-term experiment at Saxmundham in Suffolk, UK, the decrease in P_{OI} relative to a negative P budget in the period 1968–1984 accounted for only 10 % of the total P removed in the crops grown in the same period (Johnston et al. 2001). The authors attributed this to plant roots taking up P retained at sites in the soil from which it was not extracted by the Olsen reagent. Another possible explanation for this slow or negligible STP decline with no or little P fertilization might be that plant roots can take up P below the area used for soil sampling. Further studies with more than one sampling depth and sampling at greater depths at different sites would help confirm this hypothesis of P uptake at greater depths in situations of no or low P applications over several years.

Our results confirm the overall positive relationship between STP and B_{cumP} , but they also indicate that changes in STP can be less in situations of negative B_{cumP} and low STP values than in situations of positive B_{cumP} and high STP values. Consequently, this relationship between STP and the cumulative P budget should be used with caution when attempts are made at predicting changes in STP. This is particularly true in situations of low STP values. The deflection points reported above provide some values of STP with different soil extractants below which the relationship between STP and B_{cumP} should not be used to

predict STP changes in grasslands. Above the deflection point, however, the relationship provides a valid estimate of expected changes in STP over time as a function of B_{cumP} and could be used as part of a strategy aimed at lowering the P content of P-saturated grassland soils.

CONCLUSIONS

Cumulative P budget was closely related to STP determined according to existing recommendations in each of the four countries: P_{OI} for France (Ercé and Gramond sites), P_{AAE} for Switzerland (Les Verrières), P_{M3} for Eastern Canada (Lévis), and P_{AAC} for Finland (Maaninka and Siikajoki). At five of the six grassland sites, a deflection point was observed in the relationship between STP and B_{cumP} . Above this deflection point, the relationship was significant and linear at four of the sites and the STP change per unit increase in P budget tended to be greater than values encountered in other field crops under conventionally tilled soils. Below the deflection point, the relationship was not significant and a slow or negligible decrease in STP relative to B_{cumP} was observed, probably due to high buffering capacity of the solid phase. These results from long-term grasslands fertilized with varying P rates confirm that the relationship between STP and B_{cumP} can deviate for low STP values. The greater STP change per unit increase in P budget observed in most sites indicates that national global P strategies based on P budget approach should be tailored specifically for grasslands. For grassland areas where positive B_{cumP} is recommended, detailed soil sampling that capture the P variability along the rooting zone is preferred against shallow soil sampling. In situations with negative B_{cumP} , soil P dynamics could be altered by high buffering capacity of the solid phase, and therefore the P budget approach should be used with caution for predicting STP changes.

Acknowledgments This study was supported by the Sustainable Agriculture Environmental Systems (SAGES) program of Agriculture and Agri-Food Canada, INRA, Agroscope-ACW, and Yara Finland. We thank Sylvie Michaud, Sylvie Côté, Danielle Mongrain, Claude Lévesque, Eric Lecloux, and Luc Stévenin for their technical assistance.

Open Access This article is distributed under the terms of the Creative Commons Attribution License which permits any use, distribution, and reproduction in any medium, provided the original author(s) and the source are credited.

REFERENCES

- Blake, L., A.E. Johnston, P.R. Poulton, and K.W.T. Goulding. 2003. Changes in soil phosphorus fractions following positive and negative phosphorus balances for long periods. *Plant and Soil* 254: 245–261.
- Ciampitti, I.A., F.O. Garcia, L.I. Picone, and G. Rubio. 2011. Phosphorus budget and soil extractable dynamics in field crop rotations in Mollisols. *Soil Science Society of America Journal* 75: 131–142.
- CRAAQ. 2010. *Reference guide for crop fertilization*. 2nd edn., 473 pp. Centre de Référence en Agriculture et Agroalimentaire du Québec, Québec (in French).
- Demaria, P., R. Flisch, E. Frossard, and S. Sinaj. 2005. Exchangeability of phosphate extracted by four chemical methods. *Journal of Plant Nutrition and Soil Science* 168: 89–93.
- Gallet, A., R. Flisch, J.-P. Ryser, E. Frossard, and S. Sinaj. 2003. Effect of phosphate fertilization on crop yield and soil phosphorus status. *Journal of Plant Nutrition and Soil Science* 166: 568–578.
- Havlin, J.L., J. Beaton, S.L. Tisdale, and W.L. Nelson. 2014. *Soil Fertility and Fertilizers*, 8th edn., 516 pp. Upper Saddle River, NJ: Prentice Hall.
- Helsinki Commission, Baltic Marine Environmental Commission. 2005. Nutrient pollution to the Baltic Sea in 2000. In *Baltic Sea environment proceedings No. 100*, 24 pp. Retrieved, from <http://www.helcom.fi/stc/files/Publications/Proceedings/bsep100.pdf>.
- Isaac, R.A., and W.C. Johnson. 1976. Determination of total nitrogen in plant tissue, using a block digester. *Journal of the Association of Analytical Chemists* 59: 98–100.
- Johnston, A.E., and P.R. Poulton. 1977. Yields on the Exhaustion Land and changes in the NPK contents of the soils due to cropping and manuring, 1852–1975. Rothamsted Experimental Station Report for 1976, Part 2, 53–85.
- Johnston, A.E., P.R. Poulton, and J.K. Syers. 2001. Phosphorus, potassium and sulphur cycles in agricultural soils. *Proceedings of the International Fertiliser Society* 465: 1–44.
- Jouany, C., P. Cruz, P. Petibon, and M. Duru. 2004. Diagnosing phosphorus status of natural grassland in the presence of white clover. *European Journal of Agronomy* 21: 273–285.
- Lkhagvasuren, B., J.J. Schoenau, D.W. Anderson, and S.S. Malhi. 2011. Plant and soil responses to nitrogen and phosphorus fertilization of bromegrass-dominated haylands in Saskatchewan, Canada. *Grass & Forage Science* 66: 351–360.
- Ma, Y., J. Li, X. Li, X. Tang, Y. Liang, S. Huang, B. Wang, H. Liu, et al. 2009. Phosphorus accumulation and depletion in soils in wheat–maize cropping systems: Modeling and validation. *Field Crops Research* 110: 207–212.
- Malhi, S.S., J.T. Harapiak, R. Karamanos, K.S. Gill, and N. Flore. 2003. Distribution of acid extractable P and exchangeable K in a grassland soil as affected by long-term surface application of N, P and K fertilizers. *Nutrient Cycling in Agroecosystems* 67: 265–272.
- Malhi, S.S., B. Coulman, and J.J. Schoenau. 2009. Maximizing timothy forage yield and quality by balanced nitrogen, phosphorus, and sulfur fertilization. *Agronomy Journal* 101: 1182–1189.
- Mehlich, A. 1984. Mehlich-3 soil test extractant: a modification of Mehlich-2 extractant. *Communications in Soil Science and Plant Analysis* 15: 1409–1416.
- Messiga, A.J., N. Ziadi, D. Plénet, L.-E. Parent, and C. Morel. 2010. Long-term changes in soil phosphorus status related to P budgets under maize monoculture and mineral fertilization. *Soil Use and Management* 26: 354–364.
- Messiga, A.J., N. Ziadi, C. Grant, C. Morel, G. Tremblay, G. Lammare, and L.-E. Parent. 2012a. Long term impact of tillage practices and biennial P and N fertilization on maize and soybean yields and soil P status. *Field Crops Research* 133: 10–22.
- Messiga, A.J., N. Ziadi, G. Bélanger, and C. Morel. 2012b. Process-based mass-balance modeling of soil phosphorus availability in a grassland fertilized with N and P. *Nutrient Cycling in Agroecosystems* 92: 273–287.

- Messiga, A.J., N. Ziadi, G. Bélanger, and C. Morel. 2013. Soil nutrient and other major properties in grassland fertilized with nitrogen and phosphorus. *Soil Science Society of America Journal* 77: 643–652.
- Messiga, A.J., N. Ziadi, G. Bélanger, and C. Morel. 2014a. Relationship between soil phosphorus and phosphorus budget in grass sward with varying nitrogen applications. *Soil Science Society of America Journal* 78: 1481–1488.
- Messiga, A.J., Y. Ba, N. Ziadi, G. Bélanger, and J. Lafond. 2014b. Assessing the depletion of soil P following sequential extractions with Mehlich-3 and Olsen solutions. *Archives of Agronomy and Soil Science* 60: 1445–1458.
- Morel, C., H. Tunney, D. Plénet, and S. Pellerin. 2000. Transfer of phosphate ions between soil and solution: perspectives in soil testing. *Journal of Environmental Quality* 29: 50–59.
- Morel, C., N. Ziadi, A. Messiga, G. Bélanger, P. Denoroy, B. Jeangros, C. Jouany, J.-C. Fardeau, et al. 2014. Modeling of phosphorus dynamics in contrasting agroecosystems using long-term field experiments. *Canadian Journal of Soil Science* 94: 377–387.
- Oehl, F., A. Oberson, H.U. Tagmann, J.M. Besson, D. Dubois, P. Mäder, H.-R. Roth, and E. Frossard. 2002. Phosphorus budget and phosphorus availability in soils under organic and conventional farming. *Nutrient Cycling in Agroecosystems* 62: 25–35.
- Olsen, S.R., C.V. Cole, F.B. Watanabe, and L.A. Dean. 1954. *Estimation of available phosphorus in soils by extraction with sodium bicarbonate (USDA Circular 939)*. Washington, DC: U.S. Government Printing Office.
- Organization for Economic Cooperation and Development (OECD). 2008. Environmental Performance of Agriculture in OECD countries since 1990, Paris. Retrieved August 12, 2014, from <http://www.oecd.org/tad/env/indicators>.
- Power, V., H. Tunney, and D.W. Jeffery. 2005. The phosphorus requirements for silage production on high fertility soils. *Irish Journal of Agriculture and Food Research* 44: 281–296.
- Reijneveld, J.A., P.A.I. Ehlert, A.J. Termorshuizen, and O. Oenema. 2010. Changes in the soil phosphorus status of agricultural land in the Netherlands during the 20th century. *Soil Use and Management* 26: 399–411.
- Richards, I.R., and C.J. Dawson. 2008. Phosphorus imports, exports, fluxes and sinks in Europe. *Proceeding of the International Fertilizer Society* 638: 1–28.
- Saarela, I., A. Jarvi, H. Hakkola, and K. Rinne. 2004. Phosphorus status of diverse soils in Finland as influenced by long-term P fertilization. 2. Changes of soil test values in relation to P balance with references to incorporation depth of residual and freshly applied P. *Agricultural and Food Science* 13: 276–294.
- SAS Institute. 2001. *SAS/STAT software, Release 8.2*. Cary, NC: SAS Institute.
- Senthilkumar, K., T. Nesme, A. Mollier, and S. Pellerin. 2012a. Conceptual design and quantification of phosphorus flows and balances at the country scale: The case of France. *Global Biogeochemistry Cycles* 26: 1–14.
- Senthilkumar, K., T. Nesme, A. Mollier, and S. Pellerin. 2012b. Regional-scale phosphorus flows and budgets within France: The importance of agricultural production systems. *Nutrient Cycling in Agroecosystems* 92: 145–159.
- Serrano, J.M., S. Shahidian, and J.R. Marques da Silva. 2014. Soil phosphorus retention in a Mediterranean pasture subjected to differential management. *European Journal of Soil Science* 65: 562–572.
- Smit, A.L., P.S. Bindraban, J.J. Schröder, J.G. Conijn, and H.G. van der Meer. 2009. Phosphorus in agriculture: Global resources, trends and developments, Report 282, 36 pp. Wageningen: Plant Research International B.V.
- Soil Survey Staff. 2010. *Keys to soil taxonomy*. 11th edn., 338p. Washington, DC: NRCS.
- Spiess, E. 2011. Nitrogen, phosphorus and potassium balances and cycles of Swiss agriculture from 1975 to 2008. *Nutrient Cycling in Agroecosystems* 91: 351–365.
- Tunney, H., P. Csatho, and P. Ehlert. 2003. Approaches to calculating P balance at the field scale. *Journal of Plant Nutrition and Soil Science* 166: 438–446.
- Tunney, H., L. Kirwan, W. Fu, N. Culleton, and A.D. Black. 2010. Long-term phosphorus grassland experiment for beef production—Impacts on soil phosphorus levels and liveweight gains. *Soil Use and Management* 26: 237–244.
- Uusi-Kämpä, J., and H. Heinonen-Tanski. 2008. Evaluating slurry broadcasting and injection to ley for phosphorus runoff. *Journal of Environmental Quality* 36: 2339–2350.
- Valkama, E., R. Uusitalo, K. Ylivainio, P. Virkajarvi, and E. Turtola. 2009. Phosphorus fertilization: a meta-analysis of 80 years of research in Finland. *Agriculture, Ecosystems & Environment* 130: 75–85.
- Vuorinen, J., and O. Mäkitie. 1955. The method of soil testing in use in Finland. *Agrogeology Publication* 63: 1–44.
- Watson, C.A., H. Bengtsson, M. Ebbesvik, A.K. Loes, A. Myrbeck, E. Salomon, J. Schroder, and E.A. Stockdale. 2002. A review of farm-scale nutrient budgets for organic farms as a tool for management of soil fertility. *Soil Use and Management* 18: 264–273.
- Webb, J.R., A.P. Mallarino, and A.M. Blackmer. 1992. Effects of residual and annually applied phosphorus on soil test values and yields of corn and soybean. *Journal of Production Agriculture* 5: 148–152.
- Whitehead, D.C. 2000. *Nutrient elements in grasslands*, 369. Wallingford: CABI Publishing.
- Zhang, T.Q., A.F. MacKenzie, and B.C. Liang. 1995. Long-term changes in Mehlich-3 extractable P and K in a sandy clay loam soil under continuous corn (*Zea mays* L.). *Canadian Journal of Soil Science* 75: 361–367.

AUTHOR BIOGRAPHIES

Aimé Jean Messiga is a postdoctoral researcher at Trent University. His research interests include cropping systems, nutrient management and cycling, soil fertility, sustainable agriculture, and horticulture. Address: Environmental and Resource Studies Program, Trent University, 1600 West Bank Drive, Peterborough, ON K9J 7B8, Canada. e-mail: aimejeanmessiga@trentu.ca

Noura Ziadi (✉) is a research scientist at Agriculture and Agri-Food Canada. Her research interests include soil fertility and plant nutrition, and soil phosphorus dynamics and modeling. Address: Soils and Crops Research and Development Centre, Agriculture and Agri-Food Canada, 2560 Hochelaga Blvd., Quebec, QC G1V 2J3, Canada. e-mail: noura.ziadi@agr.gc.ca

Claire Jouany is a research scientist at the Institut National de Recherche Agronomique. Her research interests include nutrient cycling in agroecosystems, soil fertility management, and plant functioning under low nutrient availability (N and P). Address: INRA UMR1248, Chemin Borde Rouge, BP27, 31326 Castanet Tolosan, France. Address: INPT, UMR AGIR, Université Toulouse, 31029 Toulouse, France. e-mail: claire.jouany@toulouse.inra.fr

Perttu Virkajarvi is a professor at MTT Finland. His research interests include crop physiology of grasses, grassland production, and environmental impact of grassland farming and grazing. Address: MTT, Maaninka, Halolantie 31 A, 71750 Maaninka, Finland. e-mail: perttu.virkajarvi@mtt.fi

Raija Suomela is a research scientist at MTT Finland. Her research interests include grassland production and nutrient management.
Address: MTT, Ruukki, Tutkimusasemantie 15, 92400 Ruukki, Finland.
e-mail: raija.suomela@mtt.fi

Sokrat Sinaj is a research scientist at the Agroscope Institute for Plant Production Sciences. His research interests include nutrient management and cycling, soil fertility and analyses, and cropping systems.
Address: Institute for Plant Production Sciences, Agroscope, Route de Duillier 50, Case Postale 1012, 1260 Nyon, Switzerland.
e-mail: sokrat.sinaj@agroscope.admin.ch

Gilles Bélanger is a research scientist at Agriculture and Agri-food Canada. His research interests include growth and quality of forage crops, winter survival of perennial crops, nutrient management, and diagnostic methods for nitrogen and phosphorus deficiency.
Address: Soils and Crops Research and Development Centre, Agriculture and Agri-Food Canada, 2560 Hochelaga Blvd., Quebec, QC G1V 2J3, Canada.
e-mail: gilles.belanger@agr.gc.ca

Ciprian Stroia is lecturing professor at the Faculty of Agriculture, Banat University of Agricultural Sciences and Veterinary Medicine “King Michael I of Romania,” Timisoara. His research interests include plant ecology and nutrient cycling in agroecosystems.
Address: Department of Biology and Plant Protection, Faculty of Agriculture, Banat University of Agricultural Sciences and Veterinary Medicine, Calea Aradului 119, 300645 Timisoara, Romania.
e-mail: cipistroia2001@yahoo.com

Christian Morel is a research scientist at the Institut National de Recherche Agronomique. His research interests include P cycling in agroecosystems, soil P availability dynamics, and modeling in short- and long-term studies to improve P fertilization advice.
Address: INRA, UMR 1391 ISPA, 33140 Villenave d’Ornon Cedex, France.
Address: Bordeaux Sciences Agro, UMR 1391 ISPA, 33170 Gradignan, France.
e-mail: christian.morel@bordeaux.inra.fr