



Plant hydraulics as a central hub integrating plant and ecosystem function: meeting report for "Emerging Frontiers in Plant Hydraulics" (Washington, DC, May 2015).

Lawren Sack, Marilyn C Ball, Craig Brodersen, Stephen D Davis, David L Des Marais, Lisa A Donovan, Thomas J Givnish, Uwe G Hacke, Travis Huxman, Steven Jansen, et al.

► To cite this version:

Lawren Sack, Marilyn C Ball, Craig Brodersen, Stephen D Davis, David L Des Marais, et al.. Plant hydraulics as a central hub integrating plant and ecosystem function: meeting report for "Emerging Frontiers in Plant Hydraulics" (Washington, DC, May 2015).. Plant, Cell and Environment, 2016, 39 (9), pp.2085-2094. 10.1111/pce.12732 . hal-02634919

HAL Id: hal-02634919

<https://hal.inrae.fr/hal-02634919>

Submitted on 27 May 2020

HAL is a multi-disciplinary open access archive for the deposit and dissemination of scientific research documents, whether they are published or not. The documents may come from teaching and research institutions in France or abroad, or from public or private research centers.

L'archive ouverte pluridisciplinaire **HAL**, est destinée au dépôt et à la diffusion de documents scientifiques de niveau recherche, publiés ou non, émanant des établissements d'enseignement et de recherche français ou étrangers, des laboratoires publics ou privés.

Plant hydraulics as a central hub integrating plant and ecosystem function: meeting report for “Emerging Frontiers in Plant Hydraulics” (Washington, DC, May 2015)

Lawren Sack¹, Marilyn C. Ball², Craig Brodersen³, Stephen D. Davis⁴, David L. Des Marais^{5,6}, Lisa A. Donovan⁷, Thomas J. Givnish⁸, Uwe G. Hacke⁹, Travis Huxman¹⁰, Steven Jansen¹¹, Anna L. Jacobsen¹², Dan Johnson¹³, George W. Koch¹⁴, Christophe Maurel¹⁵, Katherine A. McCulloh¹⁶, Nate G. McDowell¹⁷, Andrew McElrone^{18,19}, Frederick C. Meinzer²⁰, Peter J. Melcher²¹, Gretchen North²², Matteo Pellegrini²³, William T. Pockman²⁴, R. Brandon Pratt¹², Anna Sala²⁵, Louis S. Santiago²⁶, Jessica A. Savage^{5,6}, Christine Scoffoni¹, Sanna Sevanto¹⁷, John Sperry²⁷, Stephen D. Tyerman²⁸, Danielle Way²⁹, N. Michele Holbrook⁶

¹*Department of Ecology and Evolutionary Biology, University of California Los Angeles, 621 Charles E. Young Drive South, Los Angeles, California, 90095 USA*

²*Research School of Biology, Australian National University, Canberra ACT 0200*

³*School of Forestry & Environmental Studies, Yale University, 195 Prospect Street, New Haven, CT 06511, USA*

⁴*Natural Science Division, Pepperdine University, Malibu, CA, USA*

⁵*Arnold Arboretum, Harvard University, Boston, MA, USA*

⁶*Department of Organismic and Evolutionary Biology, Harvard University, Boston, MA, USA*

⁷*Department of Plant Biology, University of Georgia, Athens, GA, USA*

⁸*Department of Botany, University of Wisconsin Madison, Madison, Wisconsin, USA 53706*

⁹*Department of Renewable Resources, University of Alberta, Edmonton, AB T6G 2E3, Canada*

¹⁰*Ecology and Evolutionary Biology & Center for Environmental Biology, University of California, Irvine, CA, USA*

¹¹*Ulm University, Institute of Systematic Botany and Ecology, Albert-Einstein-Allee 11, 89081 Ulm, Germany*

¹²*Department of Biology, California State University, Bakersfield, CA, USA*

¹³*Department of Forest, Rangeland and Fire Sciences, University of Idaho, Moscow ID 83844 USA*

¹⁴*Center for Ecosystem Science and Society, and Department of Biological Sciences, Northern Arizona University, Flagstaff, Arizona 86011, USA*

¹⁵*Biochimie et Physiologie Moléculaire des Plantes; UMR 5004; INRA-CNRS-Sup Agro-UM2; 2 Place Viala; Montpellier F-34060 France*

¹⁶*Department of Botany, University of Wisconsin – Madison, Madison, WI 53706, USA;*

¹⁷*Earth and Environmental Sciences Division, Los Alamos National Laboratory, Los Alamos, New Mexico 87545, USA*

¹⁸*Department of Viticulture and Enology, University of California, Davis, CA 95616, USA*

This article has been accepted for publication and undergone full peer review but has not been through the copyediting, typesetting, pagination and proofreading process which may lead to differences between this version and the Version of Record. Please cite this article as doi: 10.1111/pce.12732

¹⁹*USDA-Agricultural Research Service, Davis, CA 95616, USA*

²⁰*Pacific Northwest Research Station, USDA Forest Service, Corvallis, OR 97331, USA*

²¹*Department of Biology, Ithaca College, Ithaca, NY, USA*

²²*Department of Biology, Occidental College, Los Angeles, California 90041, USA*

²³*Department of Molecular, Cell, and Developmental Biology, University of California Los Angeles, 621 Charles E. Young Drive South, Los Angeles, California, 90095 USA*

²⁴*Department of Biology, MSC03 2020, University of New Mexico, Albuquerque, NM 87131*

²⁵*Division of Biological Sciences, University of Montana, Missoula, Montana, 59812*

²⁶*Botany and Plant Sciences, University of California, Riverside, CA 92521, USA*

²⁷*Department of Biology, University of Utah, 257 South 1400 East, Salt Lake City UT, 84112, USA.*

²⁸*ARC Centre of Excellence in Plant Energy Biology, School of Agriculture, Food and Wine, Waite Research Precinct, The University of Adelaide, PMB 1, Glen Osmond, SA 5064, Australia*

²⁹*Department of Biology, Western University, 1151 Richmond Street, London, N6A 5B7, ON, Canada*

Corresponding author

Lawren Sack
Department of Ecology and Evolutionary Biology
University of California Los Angeles
621 Charles E. Young Drive South
Los Angeles, California
90095-1606 USA
Email: lawrensack@ucla.edu
Phone: (310) 825-6525
Fax: (310) 825-9433

Water plays a central role in plant biology (Kramer & Boyer, 1995) and the efficiency of water transport throughout the plant (i.e., “plant hydraulics”) affects both photosynthetic rate and growth, an influence that scales up deterministically to the productivity of terrestrial ecosystems (Jones, 2014, Smith & Sperry, 2014). Moreover, hydraulic traits mediate the ways in which plants interact with their abiotic (e.g., drought, temperature extremes) and biotic (e.g., pathogens, invasive species) environment (Anderegg & Callaway, 2012, Choat *et al.*, 2012, Jacobsen *et al.*, 2012, Jactel *et al.*, 2012, McDowell *et al.*, 2013a, Urli *et al.*, 2013). At landscape to global scale, plant hydraulic traits are important in describing the function of ecological communities and ecosystems (Choat *et al.*, 2012, Gleason *et al.*, 2015). Indeed, as a discipline, plant hydraulics is increasingly recognized as a central hub within a network by which plant biology is connected to paleobiology, agronomy, climatology, forestry, community and ecosystem ecology, and earth-system science. Such grand challenges as anticipating and mitigating the impacts of climate change, or improving the security and sustainability of our food supply rely on our fundamental knowledge of how water behaves in the cells, tissues, organs, bodies, and diverse communities of plants (Table 1). A workshop entitled “Emerging Frontiers in Plant Hydraulics” supported by the National Science Foundation, was held in Washington DC, 2015, over 2.5 days with 36 participants. The goal of the workshop was to promote open discussion of new ideas, controversies regarding measurements and analyses, and especially, the potential for expansion both of up- and down-scaled inter-disciplinary research, and the strengthening of connections between plant hydraulic research, allied fields and global modeling efforts.

Previous workshops on hydraulics have facilitated or enabled breakthroughs or the dissemination of breakthroughs—for example the 2003 meeting at Harvard Forest (Holbrook & Zwieniecki, 2005), the highly productive workshop, “Structure and Function of Plant Hydraulic Systems” in Fullerton, CA in 2008 (Pratt *et al.*, 2008), the Canadian Society of Plant Biologists Annual Meeting in Edmonton, Canada in 2012 (Hacke *et al.*, 2012), and the International Workshop on Plant Hydraulic Techniques meeting in Ulm 2014 (Jansen *et al.*, 2015). The need for such workshops underscores the bottleneck that continues to arise due to the lack of scientific exchange that would normally occur through a structure such as a national or international meeting attended by the many practitioners working in the field; for example, US researchers working in plant hydraulics are equally likely to attend the meetings of the American Society for Plant Biology, the Ecological Society of America, the Botanical Society of America, and the American Geophysical Union; analogous splitting of the research core occurs every year in the conferences in Europe and Australia. A Gordon Research Conference entitled “Multi-Scale Plant Vascular Biology”, meeting for the first time June 26 – July 1, 2016 (<https://www.grc.org/programs.aspx?id=17277>), should help to fill this gap.

The 2015 “Emerging Frontiers in Plant Hydraulics” workshop highlighted numerous areas for increased collaboration and inter- and trans-disciplinary research. First, the workshop clearly demonstrated that water transport within plants, as a key feature influencing the soil-plant-atmosphere continuum, is by its very nature an interdisciplinary topic, given that aspects of the pathway involve fundamental processes at the interfaces of physics, biochemistry meteorology and physiology (Stroock *et al.*, 2014). Water moves through the xylem under tension, and through a number of living tissues in the roots and leaves. All of

these tissues exhibit features of anatomy (e.g. pits in xylem conduit walls) and/or molecular regulation (e.g. water channel proteins in the cell membranes) that allow the plant to respond to key environmental and physiological challenges (Chaumont & Tyerman, 2014, Maurel *et al.*, 2015). Physically, water transport relies on heat and mass transport through porous solid media in solid, liquid and vapor phases. The transport of water in the xylem is integrated with that of sugars in the phloem, and has subsequent feedbacks across carbon metabolism, allocation and storage (McDowell *et al.*, 2011; Dietze *et al.*, 2014). Plant water transport relies on physical and biochemical processes, and thus breakthroughs in physics and molecular biology both inform and extend our core understanding and capacity for making accurate measurements and contribute new methods of measurement and analysis (Prado & Maurel, 2013, Stroock *et al.*, 2014). The NSF Hydraulics 2015 workshop gathered researchers with primary foci on diverse aspects of the hydraulic system and its interfaces with other fields of science, including phloem function, ecological genomics, xylem pathology, plant physiology, ecology, hydrology, and nanodesign. The invitees were selected based on centrality of water transport in their research programs and included women and underrepresented minorities, as well as individuals from both research institutions and primarily undergraduate serving institutions.

Much emphasis was placed on designating and debating the key controversies and challenges in the field (Table 2), many of which revolve around methods. Work in plant hydraulics encompasses fundamental and newly developed approaches in bio-imaging, plant anatomy, computational models and lab measurements (Fig. 1), and includes both *in situ* and destructive approaches. Debate over methods has grown to include controversies concerning the conditions under which xylem embolism occurs, the methods to quantify the impact of water stress on xylem conductivity, and the mechanisms by which plants respond to and recover from drought (Cochard *et al.*, 2013, McDowell *et al.*, 2013b, Wheeler *et al.*, 2013, Rockwell *et al.*, 2014, Wang *et al.*, 2014, Hacke *et al.*, 2015b, Jansen *et al.*, 2015, Torres-Ruiz *et al.*, 2015). Other controversies in the field are related to the application of hydraulics in understanding a range of other processes, such as expansive growth, and storage, especially of carbon, within plant hydraulic tissues and their role in drought mortality and recovery (Dietze *et al.*, 2014, Hartmann, 2015, Quentin *et al.*, 2015). These issues are not merely technical in nature; they have the potential to transform our current understanding of the stability of water under tension in the xylem, the conditions under which embolism can be reversed, and thus the water-use, productivity and survival of plants both in well-watered soil and during progressive drought.

The participants affirmed that the structural and physiological diversity of plants necessitates a diversity of approaches and techniques, but that all methods must continually be examined for bias and artifact. One suggestion was for studies to be more transparent and comprehensive in reporting the details of their experimental methods, something that should be achievable in the age of on-line supplemental materials. A second proposal was to develop protocol resources for given measurements that would facilitate reporting of approaches and methodologies (Sack *et al.*, 2010). Several felt that such resources could reduce the rejection of papers or grant proposals on the basis of methodology, as reviewers might recognize that given the explicit details, future researchers could account for imperfect methods in interpreting the results and conducting future meta-analyses.

The workshop equally focused on new research frontiers (Table 3), including next steps and potential solutions to address methodological challenges listed in Table 2. Additionally, workshop sessions identified areas for productive collaboration between plant hydraulics and other fields (e.g., disease ecology, ecological genomics, ecohydrology and climate change). Here the relevant questions are not only where the productive interfaces among fields lie, but also the issue of scaling hydraulic measurements, typically made on only small portions of a plant, to processes relevant for the whole plant, coordinated plant-soil systems, and complex watersheds in their natural ecological or agricultural context, and in using plant hydraulics to inform models of ecosystem and Earth system processes (Mackay *et al.*, 2015, Sperry & Love, 2015). Detailed discussions focused on the value of understanding the molecular and genetic mechanisms driving plant hydraulics and how to utilize genomic tools such as transcriptomics, Genome Wide Association Studies (GWAS), and candidate gene analysis to further our understanding of plant function (Chory *et al.*, 2000). Of particular interest was identifying empirical methodologies such as gene expression analysis or gene knock-outs that might expand our understanding of hydraulic mechanisms. Participants also discussed the need to expand the use of isotopic labeling techniques to understand better the rate and direction of water movement among plant tissues.

The outcomes of this workshop were organizational and community building in nature, and immediately productive in setting out future papers, projects and grant proposals. The group resolved to co-author a paper in 2016 establishing important questions in the field and a framework or roadmap for future research in the field, as has been done for some applications of plant hydraulics research (McDowell *et al.*, 2015) and more broadly for other specific fields or topics in plant biology (e.g., Yang *et al.*, 2015). A review is needed of the points of consensus and controversy on the frontiers of the field, and the applications of this research in agriculture, biological conservation, resource management and ecosystem response to climate change. Further, the group began planning for the development of a research collaboration network, and, equally importantly, training workshops in ecological physiology (e.g., PHYS-Fest http://www.k-state.edu/ecophyslab/phys_fest.html). It is critical that students can be inspired by the importance and centrality of plant hydraulics, despite the rigorous methodology and open controversies. The Gordon Research Conferences will be locations for further development of these plans.

The workshop made clear the need for continuous emerging discussion and agreement on grand challenges, to promote full understanding of plant water transport and its implications—from genes through proteins to whole plant to ecosystems to biomimetic applications.

Acknowledgments

We are grateful to additional participants Leo De La Fuente, Barb Lachenbruch, Tony Rockwell, Jochen Schenk, Rachel Spicer, Abe Stroock, Paul Verslues and Maciej Zwieniecki. We are especially grateful to Irwin Forseth and the National Science Foundation Grant IOS-1445238 that made the workshop possible.

References

- Anderegg W.R.L. (2015) Spatial and temporal variation in plant hydraulic traits and their relevance for climate change impacts on vegetation. *New Phytologist*, **205**, 1008-1014.
- Anderegg W.R.L. & Callaway E.S. (2012) Infestation and hydraulic consequences of induced carbon starvation. *Plant Physiology*, **159**, 1866-1874.
- Anderegg W.R.L., Flint A., Huang C.-y., Flint L., Berry J.A., Davis F.W., Sperry J.S. & Field C.B. (2015) Tree mortality predicted from drought-induced vascular damage. *Nature Geoscience*, **8**, 367-371.
- Attia Z., Domec J.-C., Oren R., Way D.A. & Moshelion M. (2015) Growth and physiological responses of isohydric and anisohydric poplars to drought. *Journal of Experimental Botany*, **66**, 4373-4381.
- Barrios-Masias F.H., Knipfer T. & McElrone A.J. (2015) Differential responses of grapevine rootstocks to water stress are associated with adjustments in fine root hydraulic physiology and suberization. *Journal of Experimental Botany*, **66**, 6069-6078.
- Borland A.M., Wullschleger S.D., Weston D.J., Hartwell J., Tuskan G.A., Yang X. & Cushman J.C. (2015) Climate-resilient agroforestry: physiological responses to climate change and engineering of crassulacean acid metabolism (CAM) as a mitigation strategy. *Plant Cell and Environment*, **38**, 1833-1849.
- Bouche P., Delzon S., Choat B., Badel E., Brodribb T.J., Burlett R., Charra-Vaskou K., Cochard H., Lavigne B., Li S., Mayr S., Morris H., Torres Ruiz J.M., Zufferey V. & S. J. (2015) Are needles of *Pinus pinaster* more vulnerable to xylem embolism than branches? New insights from X-ray computed tomography. *Plant Cell & Environment*, doi 10.1111/pce.12680.
- Boyce C.K. & Leslie A.B. (2012) The paleontological context of angiosperm vegetative evolution. *International Journal of Plant Sciences*, **173**, 561-568.
- Brodersen C.R. & McElrone A.J. (2013) Maintenance of xylem network transport capacity: a review of embolism repair in vascular plants. *Frontiers in Plant Science*, **4**.
- Brodersen C.R., McElrone A.J., Choat B., Lee E.F., Shackel K.A. & Matthews M.A. (2013) In vivo visualizations of drought-induced embolism spread in *Vitis vinifera*. *Plant Physiology*, **161**, 1820-1829.
- Buckley T.N., John G.P., Scoffoni C. & Sack L. (2015) How Does Leaf Anatomy Influence Water Transport outside the Xylem? *Plant Physiology*, **168**, 1616-1635.
- Caldeira C.F., Bosio M., Parent B., Jeanguenin L., Chaumont F. & Tardieu F. (2014) A hydraulic model is compatible with rapid changes in leaf elongation under fluctuating evaporative demand and soil water status. *Plant Physiology*, **164**, 1718-1730.
- Charrier G., Charra-Vaskou K., Kasuga J., Cochard H., Mayr S. & Ameglio T. (2014) Freeze-Thaw Stress: Effects of Temperature on Hydraulic Conductivity and Ultrasonic Activity in Ten Woody Angiosperms. *Plant Physiology*, **164**, 992-998.
- Chaumont F. & Tyerman S.D. (2014) Aquaporins: highly regulated channels controlling plant water relations. *Plant Physiology*, **164**, 1600-1618.
- Choat B., Jansen S., Brodribb T.J., Cochard H., Delzon S., Bhaskar R., Bucci S.J., Feild T.S., Gleason S.M., Hacke U.G., Jacobsen A.L., Lens F., Maherali H., Martinez-Vilalta J.,

- Mayr S., Mencuccini M., Mitchell P.J., Nardini A., Pittermann J., Pratt R.B., Sperry J.S., Westoby M., Wright I.J. & Zanne A.E. (2012) Global convergence in the vulnerability of forests to drought. *Nature*, **491**, 752-+.
- Choat B., Badel E., Burlett R., Delzon S., Cochard H. & S. J. (2015) Non-invasive measurement of vulnerability to drought induced embolism by X-ray microtomography. *Plant Physiology* doi.org/10.1104/pp.15.00732.
- Chory J., Ecker J.R., Briggs S., Caboche M., Coruzzi G.M., Cook D., Dangel J., Grant S., Gueriot M.L., Henikoff S., Martienssen R., Okada K., Raikhel N.V., Somerville C.R. & Weigel D. (2000) National Science Foundation-Sponsored Workshop report: "The 2010 Project" - Functional genomics and the virtual plant. A blueprint for understanding how plants are built and how to improve them. *Plant Physiology*, **123**, 423-425.
- Coates A.R., Dennison P.E., Roberts D.A. & Roth K.L. (2015) Monitoring the impacts of severe drought on Southern California chaparral species using hyperspectral and thermal infrared imagery. *Remote Sensing* **7**, 14276-14291.
- Cobb J.N., DeClerck G., Greenberg A., Clark R. & McCouch S. (2013) Next-generation phenotyping: requirements and strategies for enhancing our understanding of genotype-phenotype relationships and its relevance to crop improvement. *Theoretical and Applied Genetics*, **126**, 867-887.
- Cochard H., Badel E., Herbette S., Delzon S., Choat B. & Jansen S. (2013) Methods for measuring plant vulnerability to cavitation: a critical review. *Journal of Experimental Botany*, **64**, 4779-4791.
- Cochard H., Delzon S. & Badel E. (2015) X-ray microtomography (micro-CT): a reference technology for high-resolution quantification of xylem embolism in trees. *Plant Cell and Environment*, **38**, 201-206.
- de Boer H.J., Eppinga M.B., Wassen M.J. & Dekker S.C. (2012) A critical transition in leaf evolution facilitated the Cretaceous angiosperm revolution. *Nature Communications*, **3**.
- De Kauwe M., Zhou S., Medlyn B., Pitman A., Wang Y., Duursma R. & Prentice I. (2015) Do land surface models need to include differential plant species responses to drought? Examining model predictions across a latitudinal gradient in Europe. *Biogeosciences Discussions* **12**.
- Dickman L.T., McDowell N.G., Sevanto S., Pangle R.E. & Pockman W.T. (2015) Carbohydrate dynamics and mortality in a pinon-juniper woodland under three future precipitation scenarios. *Plant Cell and Environment*, **38**, 729-739.
- Dietze M.C., Sala A., Carbone M.S., Czimczik C.I., Mantooth J.A., Richardson A.D. & Vargas R. (2014) Nonstructural carbon in woody plants. In: *Annual Review of Plant Biology* (ed S.S. Merchant), pp. 667-687.
- Domec J.-C., King J.S., Ward E., Oishi A.C., Palmroth S., Radecki A., Bell D.M., Miao G., Gavazzi M., Johnson D.M., McNulty S.G., Sun G. & Noormets A. (2015) Conversion of natural forests to managed forest plantations decreases tree resistance to prolonged droughts. *Forest Ecology and Management*, **355**, 58-71.
- Duan H., Duursma R.A., Huang G., Smith R.A., Choat B., O'Grady A.P. & Tissue D.T. (2014) Elevated [CO₂] does not ameliorate the negative effects of elevated temperature on drought-induced mortality in *Eucalyptus radiata* seedlings. *Plant, Cell & Environment*, **37**, 1598-1613.
- Feild T.S. & Brodribb T.J. (2013) Hydraulic tuning of vein cell microstructure in the evolution of angiosperm venation networks. *New Phytologist*, **199**, 720-726.

- Gaylord M.L., Kolb T.E., Pockman W.T., Plaut J.A., Yepez E.A., Macalady A.K., Pangle R.E. & McDowell N.G. (2013) Drought predisposes pinon-juniper woodlands to insect attacks and mortality. *New Phytologist*, **198**, 567-578.
- Germino M.J. (2015) A carbohydrate quandary. *Tree Physiology*, doi: **10.1093/treephys/tpv109**.
- Gleason S.M., Westoby M., Jansen S., Choat B., Hacke U.G., Pratt R.B., Bhaskar R., Brodribb T.J., Bucci S.J., Cao K.F., Cochard H., Delzon S., Domec J.C., Fan Z.X., Feild T.S., Jacobsen T.L., Johnson D.M., Lens F., Maherali H., Martinez-Vilalta J., Mayr S., McCulloh K.A., Mencuccini M., Mitchell P.J., Morris H., Nardini A., Pittermann J., Plavcova L., Schreiber S.G., Sperry J.S., Wright I.J. & Zanne A.E. (2015) Weak tradeoff between xylem safety and xylem-specific hydraulic efficiency across the world's woody plant species. *New Phytologist*, In press. doi: 10.1111/nph.13646.
- Grew N. (1671) *The anatomy of plants*. Royal Society, London.
- Hacke U.G., Jacobsen A.L., Pratt R.B., Maurel C., Lachenbruch B. & Zwiazek J. (2012) New research on plant-water relations examines the molecular, structural, and physiological mechanisms of plant responses to their environment. *New Phytologist*, **196**, 345-348.
- Hacke U.G., Lachenbruch B., Pittermann J., Mayr S., Domec J.-C. & Schulte P.J. (2015a) The hydraulic architecture of conifers. In: *Functional and Ecological Xylem Anatomy*, pp. 39-75. Springer, Berlin, Heidelberg.
- Hacke U.G., Venturas M.D., MacKinnon E.D., Jacobsen A.L., Sperry J.S. & Pratt R.B. (2015b) The standard centrifuge method accurately measures vulnerability curves of long-vesselled olive stems. *New Phytologist*, **205**, 116-127.
- Hartmann H. (2015) Carbon starvation during drought-induced tree mortality – are we chasing a myth? . *Journal of Plant Hydraulics*, **2**, e-005.
- Hartmann H., Adams H.D., Anderegg W.R.L., Jansen S. & Zeppel M.J.B. (2015) Research frontiers in drought-induced tree mortality: crossing scales and disciplines. *New Phytologist*, **205**, 965-969.
- Holbrook N.M. & Zwieniecki M.A. (2005) *Vascular transport in plants*.
- Holttä T., Linkosalo T., Riikonen A., Sevanto S. & Nikinmaa E. (2015) An analysis of Granier sap flow method, its sensitivity to heat storage and a new approach to improve its time dynamics. *Agricultural and Forest Meteorology*, **211**, 2-12.
- Jacobsen A.L., Roets F., Jacobs S.M., Esler K.J. & Pratt R.B. (2012) Dieback and mortality of South African fynbos shrubs is likely driven by a novel pathogen and pathogen-induced hydraulic failure. *Austral Ecology*, **37**, 227-235.
- Jactel H., Petit J., Desprez-Loustau M.-L., Delzon S., Piou D., Battisti A. & Koricheva J. (2012) Drought effects on damage by forest insects and pathogens: a meta-analysis. *Global Change Biology*, **18**, 267-276.
- Jansen S. & Schenk H.J. (2015) On the ascent of sap in the presence of bubbles. *American Journal of Botany*, **102**, 1561-1563.
- Jansen S., Schuldt B. & Choat B. (2015) Current controversies and challenges in applying plant hydraulic techniques. *New Phytologist*, **205**, 961-964.
- Jones H.G. (2014) Photosynthesis and respiration. *Plants and Microclimate: A Quantitative Approach to Environmental Plant Physiology*, 3rd Edition, 153-206.
- Kramer P. & Boyer J. (1995) *Water Relations of Plants and Soils*. Academic Press.
- Lachenbruch B. & McCulloh K.A. (2014) Traits, properties, and performance: how woody plants combine hydraulic and mechanical functions in a cell, tissue, or whole plant. *New Phytologist*, **204**, 747-764.

- Limousin J.-M., Bickford C.P., Dickman L.T., Pangle R.E., Hudson P.J., Boutz A.L., Gehres N., Osuna J.L., Pockman W.T. & McDowell N.G. (2013) Regulation and acclimation of leaf gas exchange in a pinon-juniper woodland exposed to three different precipitation regimes. *Plant Cell and Environment*, **36**, 1812-1825.
- Liu H., Xu Q.Y., He P.C., Santiago L.S., Yang K.M. & Ye Q. (2015) Strong phylogenetic signals and phylogenetic niche conservatism in ecophysiological traits across divergent lineages of Magnoliaceae. *Scientific Reports*, **5**.
- Mackay D.S., Roberts D.E., Ewers B.E., Sperry J.S., McDowell N.G. & Pockman W.T. (2015) Interdependence of chronic hydraulic dysfunction and canopy processes can improve integrated models of tree response to drought. *Water Resources Research*, **51**, 6156-6176.
- Manzoni S., Vico G., Thompson S., Beyer F. & Weih M. (2015) Contrasting leaf phenological strategies optimize carbon gain under droughts of different duration. *Advances in Water Resources*, **84**, 37-51.
- Marechaux I., Bartlett M.K., Sack L., Baraloto C., Engel J., Joetzjer E. & Chave J. (2015) Drought tolerance as predicted by leaf water potential at turgor loss point varies strongly across species within an Amazonian forest. *Functional Ecology*, **29**, 1268-1277.
- Martinez-Vilalta J., Poyatos R., Aguade D., Retana J. & Mencuccini M. (2014) A new look at water transport regulation in plants. *New Phytologist*, **204**, 105-115.
- Maurel C., Boursiac Y., Luu D.-T., Santoni V., Shahzad Z. & Verdoucq L. (2015) Aquaporins in plants. *Physiological Reviews*, **95**, 1321-1358.
- McDowell N.G., Beerling D.J., Breshears D.D., Fisher R.A., Raffa K.F. & Stitt M. (2011) The interdependence of mechanisms underlying climate-driven vegetation mortality. *Trends in Ecology & Evolution*, **26**, 523-532.
- McDowell N.G., Coops N.C., Beck P.S.A., Chambers J.Q., Gangodagamage C., Hicke J.A., Huang C.-y., Kennedy R., Krofcheck D.J., Litvak M., Meddens A.J.H., Muss J., Negron-Juarez R., Peng C., Schwantes A.M., Swenson J.J., Vernon L.J., Williams A.P., Xu C., Zhao M., Running S.W. & Allen C.D. (2015) Global satellite monitoring of climate-induced vegetation disturbances. *Trends in Plant Science*, **20**, 114-123.
- McDowell N.G., Fisher R.A., Xu C., Domec J.C., Holtta T., Mackay D.S., Sperry J.S., Boutz A., Dickman L., Gehres N., Limousin J.M., Macalady A., Martinez-Vilalta J., Mencuccini M., Plaut J.A., Ogee J., Pangle R.E., Rasse D.P., Ryan M.G., Sevanto S., Waring R.H., Williams A.P., Yepez E.A. & Pockman W.T. (2013a) Evaluating theories of drought-induced vegetation mortality using a multimodel-experiment framework. *New Phytologist*, **200**, 304-321.
- McDowell N.G., Ryan M.G., Zeppel M.J.B. & Tissue D.T. (2013b) Improving our knowledge of drought-induced forest mortality through experiments, observations, and modeling. *New Phytologist*, **200**, 289-293.
- Mencuccini M., Minunno F., Salmon Y., Martinez-Vilalta J. & Holtta T. (2015) Coordination of physiological traits involved in drought-induced mortality of woody plants. *The New phytologist*, **208**, 396-409.
- Merkhofer L., Wilf P., Haas M.T., Kooyman R.M., Sack L., Scoffoni C. & Ruben Cuneo N. (2015) Resolving Australian analogs for an Eocene Patagonian paleorainforest using leaf size and floristics. *American Journal of Botany*, **102**, 1160-1173.
- Miniussi M., Del Terra L., Savi T., Pallavicini A. & Nardini A. (2015) Aquaporins in *Coffea arabica* L.: Identification, expression, and impacts on plant water relations and hydraulics. *Plant Physiology and Biochemistry*, **95**, 92-102.
- Morris H., Plavcová L., Cvecko P., Fichtler E., Gillingham M.A.F., Martínez-Cabrera H.I., McGlynn D.J., Wheeler E., Zheng J., Ziemińska K. & Jansen S. (In Press) A global

- analysis of parenchyma tissue fractions in secondary xylem of seed plants. *New Phytologist*.
- Moshelion M., Halperin O., Wallach R., Oren R. & Way D.A. (2015) Role of aquaporins in determining transpiration and photosynthesis in water-stressed plants: crop water-use efficiency, growth and yield. *Plant Cell and Environment*, **38**, 1785-1793.
- Nguyen H.T., Stanton D.E., Schmitz N., Farquhar G.D. & Ball M.C. (2015) Growth responses of the mangrove *Avicennia marina* to salinity: development and function of shoot hydraulic systems require saline conditions. *Annals of Botany*, **115**, 397-407.
- Osborne C.P. & Sack L. (2012) Evolution of C₄ plants: a new hypothesis for an interaction of CO₂ and water relations mediated by plant hydraulics. *Philosophical Transactions of the Royal Society B-Biological Sciences*, **367**, 583-600.
- Pausas J.G., Pratt R.B., Keeley J.E., Jacobsen A.L., Ramirez A.R., Vilagrosa A., Paula S., Kanekua-Pia I.N. & Davis S.D. (2015) Towards understanding resprouting at the global scale. *New Phytologist* doi: **10.1111/nph.13644**.
- Perez-Harguindeguy N., Diaz S., Garnier E., Lavorel S., Poorter H., Jaureguiberry P., Bret-Harte M.S., Cornwell W.K., Craine J.M., Gurvich D.E., Urcelay C., Veneklaas E.J., Reich P.B., Poorter L., Wright I.J., Ray P., Enrico L., Pausas J.G., de Vos A.C., Buchmann N., Funes G., Quetier F., Hodgson J.G., Thompson K., Morgan H.D., ter Steege H., van der Heijden M.G.A., Sack L., Blonder B., Poschlod P., Vaieretti M.V., Conti G., Staver A.C., Aquino S. & Cornelissen J.H.C. (2013) New handbook for standardised measurement of plant functional traits worldwide. *Australian Journal of Botany*, **61**, 167-234.
- Pittermann J., Stuart S.A., Dawson T.E. & Moreau A. (2012) Cenozoic climate change shaped the evolutionary ecophysiology of the Cupressaceae conifers. *Proceedings of the National Academy of Sciences of the United States of America*, **109**, 9647-9652.
- Pivovarovoff A.L., Pasquini S.C., De Guzman M.E., Alstad K.P., Stemke J. & Santiago L.S. (2015) Multiple strategies for drought survival among woody plant species. *Functional Ecology* doi: **10.1111/1365-2435.12518**.
- Plavcová L. & Jansen S. (2015) The role of xylem parenchyma in the storage and utilization of non-structural carbohydrates.
- Pouzoulet J., Pivovarovoff A.L., Santiago L.S. & Rolshausen P.E. (2014) Can vessel dimension explain tolerance toward fungal vascular wilt diseases in woody plants? Lessons from Dutch elm disease and esca disease in grapevine. *Frontiers in Plant Science*, **5**.
- Prado K. & Maurel C. (2013) Regulation of leaf hydraulics: from molecular to whole plant levels. *Frontiers in plant science*, **4**.
- Pratt R.B., Jacobsen A.L., North G.B., Sack L. & Schenk H.J. (2008) Plant hydraulics: new discoveries in the pipeline. *New Phytologist*, **179**, 590-593.
- Pratt R.B., MacKinnon E.D., Venturas M.D., Crous C.J. & Jacobsen A.L. (2015) Root resistance to cavitation is accurately measured using a centrifuge technique. *Tree Physiology*, **35**, 185-196.
- Quentin A.G., Pinkard E.A., Ryan M.G., Tissue D.T., Baggett L.S., Adams H.D., Maillard P., Marchand J., Landhäusser S.M., Lacoite A., Gibon Y., Anderegg W.R.L., Asao S., Atkin O.K., Bonhomme M., Claye C., Chow P.S., Clément-Vidal A., Davies N.W., Dickman L.T., Dumbur R., Ellsworth D.S., Falk K., Galiano L., Grünzweig J.M., Hartmann H., Hoch G., Hood S., Jones J.E., Koike T., Kuhlmann I., Lloret F., Maestro M., Mansfield S.D., Martínez-Vilalta J., Maucourt M., McDowell N.G., Moing A., Muller B., Nebauer S.G., Niinemets Ü., Palacio S., Piper F., Raveh E., Richter A., Rolland G., Rosas T., Saint Joanis B., Sala A., Smith R.A., Sterck F., Stinziano J.R., Tobias M., Unda F., Watanabe M., Way D.A., Weerasinghe L.K., Wild B., Wiley E. & Woodruff D.R. (2015) Non-structural carbohydrates in woody

- p plants compared among laboratories. .
- Tree physiology*
- doi:
- 10.1093/treephys/tpv073**
- .
-
- Reblin J.S. & Logan B.A. (2015) Impacts of eastern dwarf mistletoe on the stem hydraulics of red spruce and white spruce, two host species with different drought tolerances and responses to infection.
- Trees-Structure and Function*
- ,
- 29**
- , 475-486.
-
- Reich P.B. (2014) The world-wide 'fast-slow' plant economics spectrum: a traits manifesto.
- Journal of Ecology*
- ,
- 102**
- , 275-301.
-
- Rockwell F.E., Wheeler J.K. & Holbrook N.M. (2014) Cavitation and its discontents: opportunities for resolving current controversies.
- Plant physiology*
- ,
- 164**
- , 1649-1660.
-
- Rolland V., Bergstrom D.M., Lenné T., Bryant G., Chen H., Wolfe J., Holbrook N.M., Stanton D.E. & Ball M.C. (2015) Easy come, easy go: capillary forces enable rapid refilling of embolised primary xylem vessels.
- Plant Physiology*
- ,
- 168**
- , 1636-1647.
-
- Romero A.M., Vega D. & Correa O.S. (2014) Azospirillum brasilense mitigates water stress imposed by a vascular disease by increasing xylem vessel area and stem hydraulic conductivity in tomato.
- Applied Soil Ecology*
- ,
- 82**
- , 38-43.
-
- Sack L., Cornwell W.K., Santiago L.S., Barbour M.M., Choat B., Evans J.R., Munns R. & Nicotra A. (2010) A unique web resource for physiology, ecology and the environmental sciences: PrometheusWiki.
- Functional Plant Biology*
- ,
- 37**
- , 687-693.
-
- Sack L., Scoffoni C., McKown A.D., Frole K., Rawls M., Havran C., Tran H. & Tran T. (2012) Developmentally-based scaling of leaf venation architecture explains global ecological patterns.
- Nature Communications*
- ,
- 3**
- 837.
-
- Savage J.A., Clearwater M.J., Haines D.F., Klein T., Mencuccini M., S. S., Turgeon R. & Zhang C. (In Press) Allocation, stress tolerance and carbon transport in plants: How does phloem physiology affect plant ecology? .
- Plant, Cell & Environment*
- , doi:
- 10.1111/pce.12602**
- .
-
- Schon J.A., Eitel K.B., Hougham R.J. & Hendrickson D. (2015) Creating a research to classroom pipeline: closing the gap between science research and educators.
- Journal of Sustainability Education*
- ,
- 8**
- , 1.
-
- Scoffoni C., Vuong C., Diep S., Cochard H. & Sack L. (2014) Leaf shrinkage with dehydration: coordination with hydraulic vulnerability and drought tolerance.
- Plant Physiology*
- 164**
- , 1772-1788.
-
- Sengupta S. & Majumder A.L. (2014) Physiological and genomic basis of mechanical-functional trade off in plant vasculature.
- Frontiers in Plant Science*
- ,
- 5**
- .
-
- Sevanto S. (2014) Phloem transport and drought.
- Journal of Experimental Botany*
- ,
- 65**
- , 1751-1759.
-
- Sevanto S., McDowell N.G., Dickman L.T., Pangle R. & Pockman W.T. (2014) How do trees die? A test of the hydraulic failure and carbon starvation hypotheses.
- Plant Cell and Environment*
- ,
- 37**
- , 153-161.
-
- Skelton R.P., West A.G. & Dawson T.E. (2015) Predicting plant vulnerability to drought in biodiverse regions using functional traits.
- Proceedings of the National Academy of Sciences of the United States of America*
- ,
- 112**
- , 5744-5749.
-
- Smith D.D. & Sperry J.S. (2014) Coordination between water transport capacity, biomass growth, metabolic scaling and species stature in co-occurring shrub and tree species.
- Plant Cell and Environment*
- ,
- 37**
- , 2679-2690.
-
- Sperry J.S. & Love D.M. (2015) What plant hydraulics can tell us about responses to climate-change droughts.
- New Phytologist*
- ,
- 207**
- , 14-27.
-
- Stroock A.D., Pagay V.V., Zwieniecki M.A. & Holbrook N.M. (2014) The physicochemical hydrodynamics of vascular plants. In:
- Annual Review of Fluid Mechanics, Vol 46*
- (eds S.H. Davis & P. Moin), pp. 615-642.

- Tombesi S., Nardini A., Frioni T., Soccolini M., Zadra C., Farinelli D., Poni S. & Palliotti A. (2015) Stomatal closure is induced by hydraulic signals and maintained by ABA in drought-stressed grapevine. *Scientific Reports*, **5**.
- Torres-Ruiz J.M., Jansen S., Choat B., McElrone A.J., Cochard H., Brodribb T.J., Badel E., Burlett R., Bouche P.S., Brodersen C.R., Li S., Morris H. & Delzon S. (2015) Direct X-Ray Microtomography Observation Confirms the Induction of Embolism upon Xylem Cutting under Tension. *Plant Physiology*, **167**, 40-43.
- Urli M., Porte A.J., Cochard H., Guengant Y., Burlett R. & Delzon S. (2013) Xylem embolism threshold for catastrophic hydraulic failure in angiosperm trees. *Tree Physiology*, **33**, 672-683.
- Voelker S.L., Noirot-Cosson P.-E., Stambaugh M.C., McMurphy E.R., Meinzer F.C., Lachenbruch B. & Guyette R.P. (2012) Spring temperature responses of oaks are synchronous with North Atlantic conditions during the last deglaciation. *Ecological Monographs*, **82**, 169-187.
- Wang R., Zhang L., Zhang S., Cai J. & Tyree M.T. (2014) Water relations of *Robinia pseudoacacia* L.: do vessels cavitate and refill diurnally or are R-shaped curves invalid in *Robinia*? *Plant Cell and Environment*, **37**, 2667-2678.
- Ward E.J., Domec J.-C., Lavinier M.A., Fox T.R., Sun G., McNulty S., King J. & Noormets A. (2015) Fertilization intensifies drought stress: Water use and stomatal conductance of *Pinus taeda* in a midrotation fertilization and throughfall reduction experiment. *Forest Ecology and Management*, **355**, 72-82.
- Wheeler J.K., Huggett B.A., Tofte A.N., Rockwell F.E. & Holbrook N.M. (2013) Cutting xylem under tension or supersaturated with gas can generate PLC and the appearance of rapid recovery from embolism. *Plant Cell and Environment*, **36**, 1938-1949.
- Wheeler T.D. & Stroock A.D. (2008) The transpiration of water at negative pressures in a synthetic tree. *Nature*, **455**, 208-212.
- Woodruff D.R. (2014) The impacts of water stress on phloem transport in Douglas fir trees. *Tree Physiology*, **34**, 5-14.
- Woodruff D.R., Meinzer F.C., Marias D.E., Sevanto S., Jenkins M.W. & McDowell N.G. (2015) Linking nonstructural carbohydrate dynamics to gas exchange and leaf hydraulic behavior in *Pinus edulis* and *Juniperus monosperma*. *New Phytologist*, **206**, 411-421.
- Yang X., Cushman J.C., Borland A.M., Edwards E.J., Wullschlegel S.D., Tuskan G.A., Owen N.A., Griffiths H., Smith J.A.C., De Paoli H.C., Weston D.J., Cottingham R., Hartwell J., Davis S.C., Silvera K., Ming R., Schlauch K., Abraham P., Stewart J.R., Guo H.-B., Albion R., Ha J., Lim S.D., Wone B.W.M., Yim W.C., Garcia T., Mayer J.A., Petereit J., Nair S.S., Casey E., Hettich R.L., Ceusters J., Ranjan P., Palla K.J., Yin H., Reyes-Garcia C., Luis Andrade J., Freschi L., Beltran J.D., Dever L.V., Boxall S.F., Waller J., Davies J., Bupphada P., Kadu N., Winter K., Sage R.F., Aguilar C.N., Schmutz J., Jenkins J. & Holtum J.A.M. (2015) A roadmap for research on crassulacean acid metabolism (CAM) to enhance sustainable food and bioenergy production in a hotter, drier world. *New Phytologist*, **207**, 491-504.
- Zwieniecki M.A., Melcher P.J. & Ahrens E.T. (2013) Analysis of spatial and temporal dynamics of xylem refilling in *Acer rubrum* L. using magnetic resonance imaging. *Frontiers in Plant Science*, **4**.
- Zwieniecki M.A. & Secchi F. (2015) Threats to xylem hydraulic function of trees under "new climate normal" conditions. *Plant Cell and Environment*, **38**, 1713-1724.

Table 1. Centrality of the role of hydraulics in plant biology, ecology, evolution, paleobiology and climate change

Topic	Recent publications
1. Woody plant responses to climate	Limousin <i>et al.</i> , 2013, Sevanto <i>et al.</i> , 2014, Anderegg, 2015, De Kauwe <i>et al.</i> , 2015, Dickman <i>et al.</i> , 2015, Domec <i>et al.</i> , 2015, Hartmann <i>et al.</i> , 2015, Manzoni <i>et al.</i> , 2015, Sperry & Love, 2015, Ward <i>et al.</i> , 2015
2. Species distributions and ecosystem function	Choat <i>et al.</i> , 2012, Gleason <i>et al.</i> , 2015, Nguyen <i>et al.</i> , 2015, Pausas <i>et al.</i> , 2015, Skelton <i>et al.</i> , 2015
3. Prediction of photosynthetic productivity under contrasting environments	Osborne & Sack, 2012{Mackay, 2015 #44
4. Reconstruction of paleo-climate, paleo-ecology and the evolution of plant lineages	Boyce & Leslie, 2012, de Boer <i>et al.</i> , 2012, Pittermann <i>et al.</i> , 2012, Sack <i>et al.</i> , 2012, Voelker <i>et al.</i> , 2012, Feild & Brodribb, 2013, Merkhofer <i>et al.</i> , 2015
5. Plant pathogens, microbiomes, and plant responses to infection	Gaylord <i>et al.</i> , 2013, Pouzoulet <i>et al.</i> , 2014, Romero <i>et al.</i> , 2014, Reblin & Logan, 2015
6. Increasing agricultural productivity (biomass yield and tolerance to salinity, flooding, freezing, heat, as well as drought)	Caldeira <i>et al.</i> , 2014, Barrios-Masias <i>et al.</i> , 2015, Borland <i>et al.</i> , 2015, Miniussi <i>et al.</i> , 2015, Moshelion <i>et al.</i> , 2015
7. Biomimetic applications	Wheeler & Stroock, 2008

Table 2. Current major controversies in plant hydraulics, where a controversy is defined as a problem that engendered debate among two or more scientific points of view and that remains unresolved, potentially because of a lack of a decisive theoretical framework or adequate information for a final decision.

Topic	Current controversies and challenges	Recent publications (2013-)
1. Embolism of xylem and refilling	<ul style="list-style-type: none"> Does xylem refilling under tension exist? If it exists, is it common or rare in given species or across species? If it exists, does it provide an advantage in tolerance or productivity? Is there a publication bias for xylem refilling? Are r-shaped stem hydraulic vulnerability curves real? Can matching of lab and field data resolve controversies? Can v-curves be matched with native PLC in the field? Do these datasets already exist? Is it possible to develop a protocol to completely avoid artefacts across labs? Are visualization methods (e.g., Fig. 1) more reliable than indirect hydraulic methods? What potential artifacts exist in modern visualization tools? e.g., can microCT distinguish air vs tyloses vs gels vs droplets; how can we best truth the visualization tools? If we calibrate hydraulic methods against visualization, do we have to do it for every species or will a few dramatically different representative species suffice? How to know? Are the artefacts consistent across tissues (i.e. are roots really that vulnerable?)? What resolution is needed among visualization and measurement tools that provide contrasting clues regarding embolism? e.g., microCT does not reveal the embolism suggested by certain methods, e.g., the cavitron. Does embolism act as a signal or promote signaling for stomatal closure? What are the energy costs of water transport and or embolism refilling? What exactly is the role of hydraulic failure, and avoidance thereof, in drought-induced mortality? 	Brodersen & McElrone, 2013, Cochard <i>et al.</i> , 2013, Zwieniecki <i>et al.</i> , 2013, Choat B. <i>et al.</i> , 2015, Hacke <i>et al.</i> , 2015b, Pratt <i>et al.</i> , 2015, Torres-Ruiz <i>et al.</i> , 2015
2. Important hydraulics traits	<ul style="list-style-type: none"> What traits most strongly influence plant performance? What kills plants during drought? When is a plant dead? What are the important plant traits (hydraulic vulnerability, capacitance of water storage, dormancy, lethal water potentials, compartmentalization, resprouting) that cause or predict plant mortality? Which traits are best to characterize communities and ecosystems? Which traits should be measured in model plant systems and for crop phenotyping? How can we model the integrated function of individual and multiple traits? Do different traits matter for different organs and life stages? How important are tradeoffs? 	Tombesi <i>et al.</i> , 2015 Lachenbruch & McCulloh, 2014, Reich, 2014, Sevanto <i>et al.</i> , 2014, Anderegg <i>et al.</i> , 2015, Marechaux <i>et al.</i> , 2015, Moshelion <i>et al.</i> , 2015, Sperry & Love, 2015
3. What are the roles of non-structural carbon compounds?	<ul style="list-style-type: none"> What role do NSCs play, if any, in plant hydraulics, including embolism refilling? How important are NSCs for osmotic adjustment and drought resistance? Do NSCs influence drought-survival thresholds? Does metabolic water from NSC hydrolysis play a role in localized water relations/refilling? 	Dickman <i>et al.</i> , 2015, Germino, 2015, Hartmann, 2015, Plavcová & Jansen, 2015, Quentin <i>et al.</i> , 2015, Woodruff <i>et al.</i> , 2015
4. Are there clear categories of hydraulic responses and drought tolerance?	<ul style="list-style-type: none"> Different ways to classify plant hydraulic strategies: water spender vs water saver, isohydric vs anisohydric, dehydration sensitive vs dehydration tolerant, and desiccation sensitive vs desiccation tolerant. 	McDowell <i>et al.</i> , 2013a, Martinez-Vilalta <i>et al.</i> , 2014, Attia <i>et al.</i> , 2015, Mencuccini <i>et al.</i> , 2015, Pivovarov <i>et al.</i> , 2015, Skelton <i>et al.</i> , 2015

Table 3. Emerging frontiers in plant hydraulic transport

Topic	Specific opportunities and frontiers	Recent publications (2010-)
1. New visualization and sensor methods	<ul style="list-style-type: none"> • New imaging methods, including synchrotron-based micro computed tomography • Can best practices and visualization techniques (e.g. HRCT) eliminate long-standing controversies regarding apparently conflicting results? • How do we reduce the error in whole tree transpiration and conductance estimates based on sapflow? • Need to recognize wide opportunities, especially for bio-inspired engineering of novel sensors which do not currently exist, e.g., for imaging flow rates in vivo, or sensing turgor in cells, such as mechano-osmotic sensor from <i>E. coli</i> 	Brodersen <i>et al.</i> , 2013, Cochard <i>et al.</i> , 2013, Coates <i>et al.</i> , 2015, Cochard <i>et al.</i> , 2015
2. Application of hydraulics in whole plant models, climate models, distribution models, DGVMs.	<ul style="list-style-type: none"> • What is a realistic representation of hydraulics in models of plant growth, and in ecosystem function and earth models, especially for predicting effects of climate change? • How do hydraulics determine rates of photosynthetic productivity? • Links to development (structure and function), across multiple organs, across organisms and scaled up (temporal and developmentally), • Apply hydraulic principles/issues to conservation/restoration and ecohydrology • What are the feedbacks and interactions between available carbohydrates and hydraulics? • How do hydraulics influence stomatal behavior? • How to account for large variation in anatomy and function within given organs and individuals? (e.g., large variation in vessel diameter even within poplar) • How can hydraulics and xylem-phloem interactions contribute to simulated global fluxes, productivity, and survival? • How do hydraulic traits vary under different growth environments? • What are the important climate traits to characterize hydraulic response? 	Duan <i>et al.</i> , 2014, De Kauwe <i>et al.</i> , 2015, Holttä <i>et al.</i> , 2015, Mackay <i>et al.</i> , 2015, Skelton <i>et al.</i> , 2015, Sperry & Love, 2015
3. Methodology, best practices needed, standard spreadsheets	<ul style="list-style-type: none"> • Need to partner labs to resolve methods issues. • Need for best practices, methods repository, improved terminology, standardized units, and a plant hydraulics handbook • How can NSCs be measured in a standard way? Can they be measured accurately? • Stem vulnerability: presenting PLC in absolute vs relative terms; cavitron versus standard centrifuge; initial sample preparation, such as cutting under tension (“Wheeler effect”) and flushing before measuring v-curves; accounting for variability among stems and seasonal effects; measurement details, such as time of adjustment, repeated cutting, eliminating wounding effects. Can hydraulic phenomena be investigated in cut or excised plant parts to represent those in intact plants? • What potential artifacts exist in modern visualization tools? e.g., can microCT distinguish air vs tyloses vs gels vs droplets? • Methods comparisons are needed. Challenges—high biodiversity, time consuming measures, general acceptance of methods 	http://prometheuswiki.publish.csiro.au/ Cochard <i>et al.</i> , 2013, Perez-Harguindeguy <i>et al.</i> , 2013, Hacke <i>et al.</i> , 2015b, Torres-Ruiz <i>et al.</i> , 2015

4. Genomic basis for hydraulics traits and their impact on plant performance	<ul style="list-style-type: none"> • The genomic basis for xylem structure and function within and across species for improving drought tolerance, and crop improvement. • Applications of reverse genetics; genome editing; forward genetics, QTL and GWAS to determine the network of genes controlling hydraulic traits • Genotyping-phenotyping projects require rapid proxies for hydraulic conductivity and vulnerability and water status. 	Cobb <i>et al.</i> , 2013, Sengupta & Majumder, 2014
5. Leaf and root hydraulics	<ul style="list-style-type: none"> • Clarifying the hydraulic pathways through organs that include xylem and living tissue pathways, and vapor vs liquid phase transport • Determining the functional roles of anatomical variation and response of individual tissues to water status • Clarifying the roles and dynamics of aquaporins in various tissues • Root hydraulics. How important are deep versus shallow roots? • Leaf hydraulic vulnerability: do the different methods measure the same pathways? 	Prado & Maurel, 2013, Scoffoni <i>et al.</i> , 2014, Bouche P. <i>et al.</i> , 2015, Buckley <i>et al.</i> , 2015, Maurel <i>et al.</i> , 2015
6. Drought tolerance	<ul style="list-style-type: none"> • What traits determine of the response of photosynthesis, whole plant carbon balance and survival during droughts? • Impact of resource availability on the structure and function of water transport tissues • What are the tipping points for failure of the hydraulic system? 	Sevanto, 2014, Woodruff, 2014, Pivovarovoff <i>et al.</i> , 2015
7. Mechanism of water transport in xylem given diverse and complex anatomy; integration of xylem with living parenchyma and phloem	<ul style="list-style-type: none"> • How do surfactants act to stabilize nanobubbles? Does a plant actually need to remove embolism on a fast time scale to survive? • CO₂ permeation of aquaporins, and of ions permeating aquaporins • The hydraulic architecture of the xylem and phloem and their developmental and functional interdependence and co-evolution • Interactions between xylem and phloem under different environmental conditions and in different organs (e.g. fruit, flowers and roots) • How does wood anatomy determine vulnerability to embolism? How does wood parenchyma act to promote or protect from embolism? • Integration of water transport system through all organs in the plant • Parenchyma: temporal dynamics of carbon storage (minutes to years) • Developmental determinants of hydraulic networks • ABA influence on stomata and/or on aquaporins in vascular parenchyma • Hydraulic capacitance, role of parenchyma and phloem in plant defense and resilience to disturbance • Are the mechanisms of embolism initiation (i.e. first conduits to embolize) and embolism spread the same? Do conduits embolize in isolation (i.e. no adjacent air filled vessels)? Can parenchyma cells act as a source of air seeds? • Xylem-phloem interactions in relation to behavior of cambium/meristems 	Chaumont & Tyerman, 2014, Hacke <i>et al.</i> , 2015a, Jansen & Schenk, 2015, Rolland <i>et al.</i> , 2015, Zwieniecki & Secchi, 2015, Morris <i>et al.</i> , In Press, Savage <i>et al.</i> , In Press

8. Plant interactions with other organisms; water relations	<ul style="list-style-type: none"> • Applications of plant hydraulics for entomologists, pathologists, microbial biologists given that plant water relations influences susceptibility to herbivores and pathogens • Effects of plant hydraulics on the microbiome – plant host relationship 	Gaylord <i>et al.</i> , 2013, Pouzoulet <i>et al.</i> , 2014
9. Evolution and comparative methods; diversity within individuals and across species and communities	<ul style="list-style-type: none"> • Clarifying the role of hydraulics in community ecology, including trait-based ecology and resource-use spectra • Embrace diversity of the ways that plants have solved to survive in different environments, integrating physiology with models. • Clarifying the range of responses of species within communities • The interactive role of hydraulics with tolerance of other stresses, such as freezing and wildfires and other disturbances, • The variation of hydraulics across life forms and diverse lineages and diverse ecosystems • Evolution of plant hydraulic systems. 	Charrier <i>et al.</i> , 2014, Liu <i>et al.</i> , 2015, Nguyen <i>et al.</i> , 2015
10. How can we leverage our knowledge of hydraulics to train others within the field and outside the field, especially to address climate change and to communicate what we do	<ul style="list-style-type: none"> • Need for improved communication between scientists. • How can we teach non-traditional audiences about the importance of plant hydraulics (other fields, students, public)? • Collaborations with modelers • Teaching and outreach (videos with tools), high school videos, workshops for teachers, public outreach, modules for practical education. 	<p>Schon <i>et al.</i>, 2015</p> <p>http://www.learnnc.org/?home</p> <p>https://www.youtube.com/watch?v=BickMFHAZR0</p> <p>https://www.youtube.com/user/crashcourse</p> <p>https://www.youtube.com/user/scishow</p>

Figure Caption

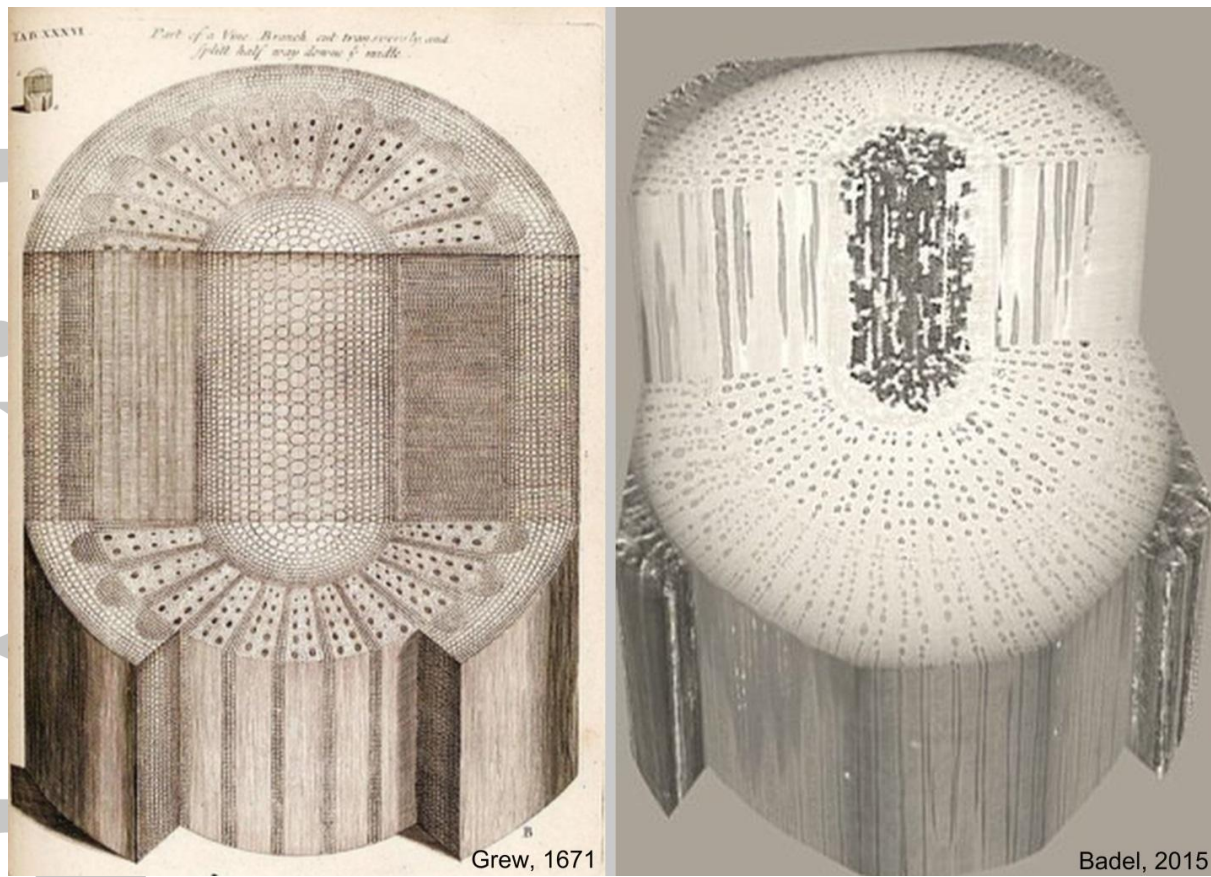


Figure 1. New technologies are revolutionizing the field of plant hydraulics, including non-invasive imaging (e.g. nuclear magnetic resonance imaging and X-ray micro-tomography); while both panels show the cross-sectional anatomy of the stem of *Vitis*, featuring the xylem, the left panel shows a painstaking illustration based on light microscopy (Grew, 1671), while the right panel shows a micro-tomographic image taken in 2015, *in vivo*, and faithfully documents the three dimensional organization of the xylem network, but also reveals the functional status of the plant, where darker, air-filled vessels can be clearly distinguished from their water-filled, functional counterparts (Badel, pers. comm). These images highlight an important turning point in our understanding plant water transport and are an example of the emerging tools available for validating methodologies and longstanding hypotheses. Picture credit: Eric Badel.

Plant hydraulics is increasingly recognized as a central hub relating fields within plant biology, ecology, evolution, paleobiology, and agriculture, essential to grand challenges such as anticipating and mitigating the impacts of climate change, and improving the security and sustainability of our food supply. A workshop entitled “Emerging Frontiers in Plant Hydraulics” supported by the National Science Foundation, was held in Washington DC, 2015. We summarize the discussions, including controversies regarding measurements and analyses, the emerging frontiers of up- and down-scaled inter-disciplinary research, and the strengthening of connections between research in plant hydraulics, that in allied fields and global modeling efforts.