



**HAL**  
open science

## NADPH oxidases in the arbuscular mycorrhizal symbiosis

Simone Belmondo, Cristina Calcagno, Andrea Genre, Alain Puppo, Nicolas Pauly, Luisa Lanfranco

► **To cite this version:**

Simone Belmondo, Cristina Calcagno, Andrea Genre, Alain Puppo, Nicolas Pauly, et al.. NADPH oxidases in the arbuscular mycorrhizal symbiosis. *Plant Signaling and Behavior*, 2016, 11 (4), 10.1080/15592324.2016.1165379 . hal-02636278

**HAL Id: hal-02636278**

**<https://hal.inrae.fr/hal-02636278v1>**

Submitted on 9 Sep 2024

**HAL** is a multi-disciplinary open access archive for the deposit and dissemination of scientific research documents, whether they are published or not. The documents may come from teaching and research institutions in France or abroad, or from public or private research centers.

L'archive ouverte pluridisciplinaire **HAL**, est destinée au dépôt et à la diffusion de documents scientifiques de niveau recherche, publiés ou non, émanant des établissements d'enseignement et de recherche français ou étrangers, des laboratoires publics ou privés.

SHORT COMMUNICATION

## NADPH oxidases in the arbuscular mycorrhizal symbiosis

Simone Belmonto<sup>a</sup>, Cristina Calcagno<sup>a</sup>, Andrea Genre<sup>a</sup>, Alain Puppo<sup>b</sup>, Nicolas Pauly<sup>b</sup>, and Luisa Lanfranco<sup>a</sup>

<sup>a</sup>Dipartimento di Scienze della Vita e Biologia dei Sistemi, Università degli Studi di Torino, Via Accademia Albertina 13, Torino, Italy; <sup>b</sup>INRA, Université de Nice Sophia Antipolis, CNRS, UMR 1355-7254 Institut Sophia Agrobiotech, Sophia Antipolis, France

### ABSTRACT

Plant NADPH oxidases are the major source of reactive oxygen species (ROS) that plays key roles as both signal and stressor in several plant processes, including defense responses against pathogens. ROS accumulation in root cells during arbuscular mycorrhiza (AM) development has raised the interest in understanding how ROS-mediated defense programs are modulated during the establishment of this mutualistic interaction. We have recently analyzed the expression pattern of 5 NADPH oxidase (also called RBOH) encoding genes in *Medicago truncatula*, showing that only one of them (*MtRbohE*) is specifically upregulated in arbuscule-containing cells. In line with this result, RNAi silencing of *MtRbohE* generated a strong alteration in root colonization, with a significant reduction in the number of arbusculated cells. On this basis, we propose that *MtRBOHE*-mediated ROS production plays a crucial role in the intracellular accommodation of arbuscules.

### ARTICLE HISTORY

Received 12 February 2016  
Accepted 8 March 2016

### KEYWORDS

Arbuscular mycorrhizal symbiosis; *Medicago truncatula*; NADPH oxidase; reactive oxygen species (ROS); respiratory burst oxidase homolog (RBOH); spatio-temporal gene expression

Roots of ~80% of plant species in natural and agricultural systems are colonized by arbuscular mycorrhizal (AM) fungi, a crucial component of the plant microbiota.<sup>1</sup> In this mutualistic symbiosis the fungus delivers to the plant mineral nutrients, mainly phosphorus and nitrogen, in exchange for carbon.<sup>2</sup> Besides promoting plant growth, AM fungi sustain other important functions such as soil aggregation and water retention, tolerance to biotic and abiotic stresses and increase in plant biodiversity.<sup>3</sup> The clear ecological and economic importance of this symbiosis has strongly boosted the interest of the scientific community.

This very ancient and intimate plant-fungus association is thought to rely on a rigorous colonization program that leads the plant cell to accommodate intracellular fungal structures, including hyphae and highly branched arbuscules.<sup>4</sup> Root colonization is associated with massive rewiring of nutrient fluxes that guarantee reciprocal benefits to both the host plant and the fungus.<sup>5</sup> Important advances have been achieved in the last years on the molecular mechanisms governing the symbiosis; however, the way this mutualistic interaction overtakes plant defense remains largely obscure. In this frame, a key role is emerging for fungal effector proteins as communication factors, in analogy to several plant pathogenic interactions.<sup>6,7</sup> The SP7 secreted protein from *Rhizophagus irregularis* was indeed shown to interfere with the expression of plant defense genes.<sup>6</sup>

On the plants side, a conserved defense response to pathogens is the production of Reactive Oxygen Species (ROS) which play a pivotal role in regulating numerous responses to biotic and abiotic stresses in plants. The complexity in ROS responses to diverse stimuli has been proposed to rely on the multiple regulatory mechanisms of ROS production *via* NADPH oxidases, one of the primary sources of ROS.<sup>8</sup> NADPH oxidases,

known in plants as RBOH (respiratory burst oxidase homolog) catalyze the production of superoxide by transferring electrons from NADPH to molecular oxygen, with secondary generation of H<sub>2</sub>O<sub>2</sub>. They are encoded by a multigene family, with up to 10 different members in the model plant *Arabidopsis thaliana*.<sup>9,10</sup> Complex mechanisms of RBOH regulation, from transcriptional to post-translational level, occur and contribute to RBOH expression and function in an array of tissue types and developmental stages under various environmental conditions.<sup>8,11</sup>

The activation of specific RBOH isoforms is responsible for ROS accumulation in several plant-pathogen interactions<sup>12,13</sup> and in the symbiotic interaction between legumes and nitrogen-fixing rhizobia.<sup>14,15,16</sup>

H<sub>2</sub>O<sub>2</sub> has been detected in root cells colonized by AM fungi.<sup>17,18,19</sup> Interestingly, the up-regulation of fungal genes implicated in oxidative stress defense has also been reported in mature mycorrhizas<sup>19,20</sup> suggesting that protection against localized ROS-based host defense responses may be involved in arbuscule formation and/or maintenance. Starting from the hypothesis that plant RBOH could be good candidates for H<sub>2</sub>O<sub>2</sub> production in arbuscular mycorrhizas, we have analyzed in a recent publication the spatio-temporal expression profiles of 5 *Rboh* genes from the model legume *Medicago truncatula* (*MtRbohA*, *MtRbohB*, *MtRbohE*, *MtRbohG*, *MtRbohF*) during the establishment of the AM symbiosis.<sup>21</sup> *MtRboh* transcript levels did not drastically change in total RNA extractions from whole mycorrhizal and non mycorrhizal roots in a time course experiment of root colonization (7, 14, 28 and 60 d post-inoculation), with the highest expression level always observed for *MtRbohG*. This is not surprising, because AM colonization is an asynchronous process and plant responses often develop on a

small local scale in mycorrhizal roots. To achieve a more detailed view of gene expression pattern we used a complementary cellular and molecular approach that allowed transcript localization in different cell types. The analysis of *Agrobacterium rhizogenes*-transformed roots expressing a GUS transcriptional fusion construct with *MtRboh* promoters showed that all genes are expressed in the central cylinder (in both mycorrhizal and non mycorrhizal conditions), underlying the importance of RBOH and ROS in cell wall metabolism.<sup>22</sup> This approach also highlighted the expression of *MtRbohE* in cells containing arbuscules.

The laser microdissection technique clearly showed the expression of 2 genes, *MtRbohG* and *MtRbohE*, in cortical cells, whether or not they were colonized by fungal hyphae. Thus, this technique turned out to be more sensitive than the GUS histochemical assay since the *MtRbohG* promoter activity was never observed in cortical cells. Remarkably, *MtRbohE* transcripts appeared more abundant in arbuscule-containing cells compared to adjacent non colonized cells, supporting the results obtained with the GUS assay. A summary of the expression pattern of the 5 analyzed *MtRboh* genes in a mycorrhizal root is shown in Fig. 1.

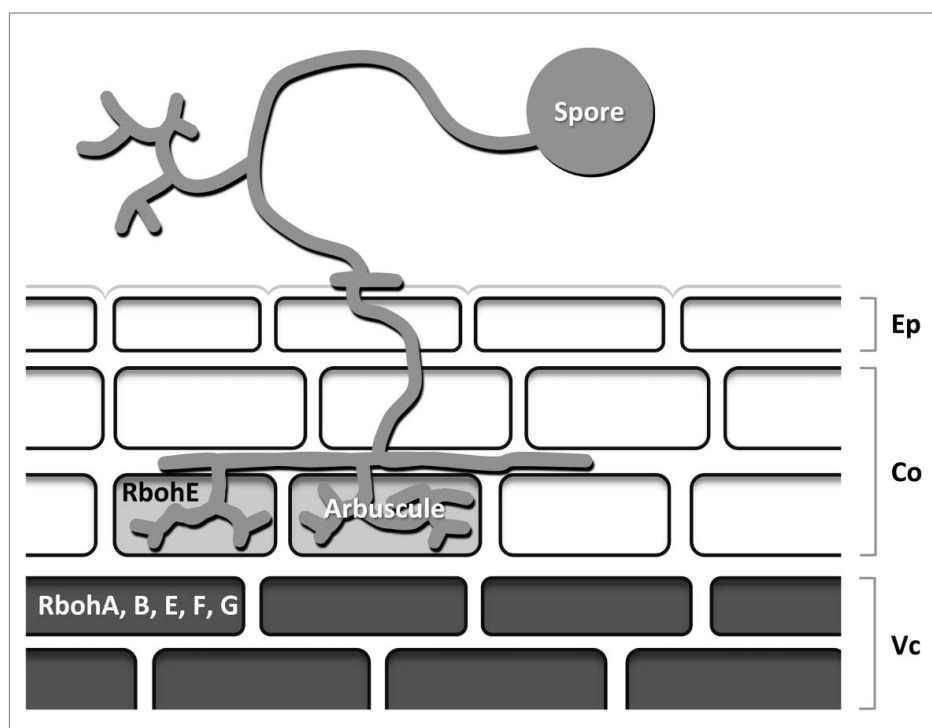
To further clarify the role of *MtRbohE*, we generated RNAi lines. While *RbohE*-silenced plants showed a normal nodulation phenotype, an altered AM colonization pattern was observed in the root cortex, with fewer arbuscules and more abundant intercellular hyphae, compared to control roots (Fig. 2). Altogether our data indicate the transient upregulation of *MtRbohE* expression in arbusculated cells and suggest a role for *MtRbohE* in arbuscule accommodation within cortical cells.

Our results integrate those from Arthikala and colleagues who recently characterized RBOH in arbuscular mycorrhizas of

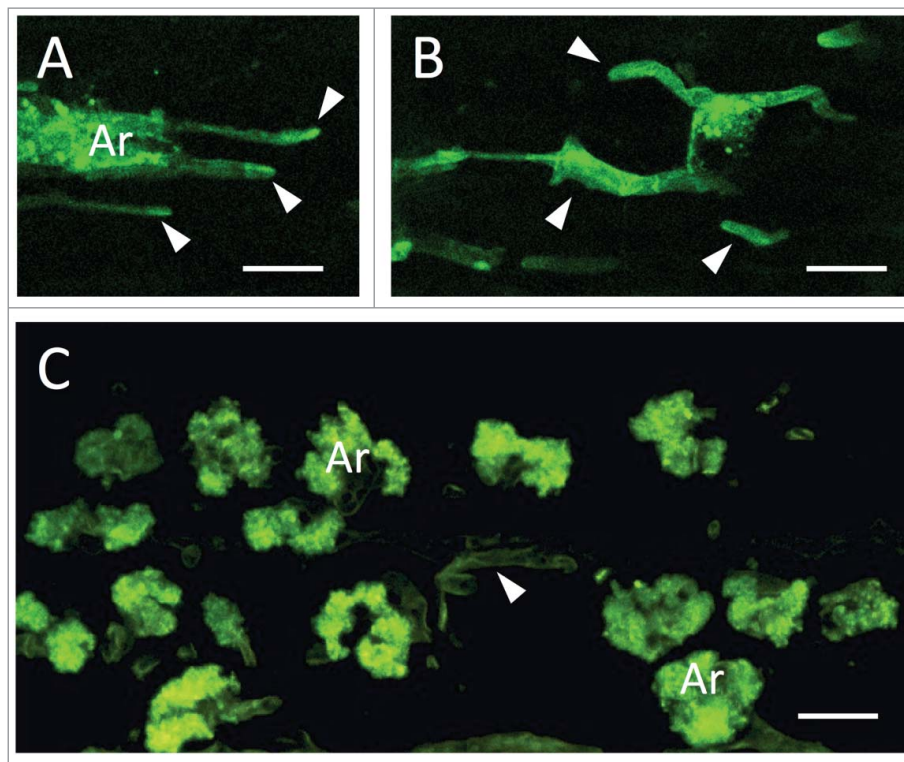
another legume plant: the *PvRbohB* gene from *Phaseolus vulgaris* (homolog of *MtRbohG*) turned out to act as a negative regulator of the AM symbiosis while it is required for root infection by rhizobia.<sup>23,24</sup>

Although only 2 *Rboh* genes from 2 different legumes have been characterized so far<sup>10,14,23,24</sup> these findings suggest that different gene members of the RBOH family play distinct functions in the AM symbiosis; moreover, some of them may even have opposite functions (promotion *versus* inhibition) in the 2 types of root symbioses. Interestingly, in the case of *MtRbohE* silencing, no phenotype has been observed during rhizobial symbiosis.<sup>21</sup> The temporal and spatial fine tuning of RBOH-derived ROS, seems therefore to contribute to the establishment of fully functional interactions in these plant-microbe associations. The AM symbiont may also participate to ROS production by specific fungal NADPH oxidases (also known as Nox). Nox, which also belong to a gene family with up to 3 (A, B and C) classes, play a key role in fungal cellular differentiation and development.<sup>25</sup> Interestingly, a NoxA gene was shown to be critical for maintaining a mutualistic symbiosis between the fungal endophyte *Epichloë festucae* and its host plant *Lolium perenne*.<sup>26,27</sup> Molecular and *in silico* analyses revealed that the AM fungus *Rhizophagus irregularis* possess Nox genes, belonging to class A and B, which are expressed in arbuscule-containing cells (Fiorilli and Lanfranco, unpublished results). A fungal contribution to NADPH-oxidases-related processes in the *in planta* phase can thus be envisaged.

Future challenges will be to decipher how the NADPH-oxidases activities not only from the plant but also from the fungal partner exert their control over the AM colonization process eventually interacting with other signals.



**Figure 1.** Scheme of the expression profiles of the investigated *MtRboh* genes in a mycorrhizal root. Based on histochemical GUS assays *MtRbohA*, *B*, *E*, *F* and *G* are expressed in the vascular cylinder while *MtRbohE* is also expressed in arbuscule-containing cells. Ep: epidermis; Co: cortex; Vc: vascular cylinder.



**Figure 2.** Altered arbuscular mycorrhizal colonization in *MtRbohE* RNAi-silenced lines of *Medicago truncatula*. *MtRbohE*-silenced plants generated an abnormal colonization pattern (A, B), with fewer arbuscules (Ar) and more frequent intercellular hyphae (arrowheads), compared to wild type roots (C). Confocal images of WGA-FITC stained fungal structures in root longitudinal sections. Bars = 20  $\mu$ m.

### Disclosure of potential conflicts of interest

No potential conflicts of interest were disclosed.

### Funding

Research was funded by the BIOBIT-Converging Technology project (WP2) to LL, the University grant (60%) to LL and AG, the BLAN07-2\_182872 ANR research program to AP.

### References

- Lanfranco L, Young P. Genetic and genomic glimpses of the elusive arbuscular mycorrhizal fungi. *Curr Opin Plant Biol* 2012; 15:454-61; PMID:22673109; <http://dx.doi.org/10.1016/j.pbi.2012.04.003>
- van der Heijden MGA, Martin F, Selosse MA, Sanders IR. Mycorrhizal ecology and evolution: The past, the present and the future. *New Phytol* 2015; 205:1406-23; PMID:25639293; <http://dx.doi.org/10.1111/nph.13288>
- Gianinazzi S, Gollotte A, Binet MN, van Tuinen D, Redecker D, Wipf D. Agroecology: the key role of arbuscular mycorrhizas in ecosystem services. *Mycorrhiza* 2010; 20:519-30; PMID:20697748; <http://dx.doi.org/10.1007/s00572-010-0333-3>
- Genre A, Russo G. Does a common pathway transduce symbiotic signals in plant-microbe interactions? *Front Plant Sci* 2016; 7:96; PMID:26909085; <http://dx.doi.org/10.3389/fpls.2016.00096>
- Walder F, van der Heijden M. Regulation of resource exchange in the arbuscular mycorrhizal symbiosis. *Nature Plants* 2015; 1:15159
- Kloppholz S, Kuhn H, Requena N. A secreted fungal effector of *Glomus intraradices* promotes symbiotic biotroph. *Curr Biol* 2011; 21:1-6; PMID:21129968; <http://dx.doi.org/10.1016/j.cub.2011.06.044>
- Sedziewska-Toro K, Delaux PM. Mycorrhizal symbioses: today and tomorrow. *New Phytol* 2016; 209:917-20; PMID:26756534; <http://dx.doi.org/10.1111/nph.13820>
- Baxter A, Mittler R, Suzuki N. ROS as key players in plant stress signalling. *J Exp Bot* 2014; 65:1229-40; PMID:24253197; <http://dx.doi.org/10.1093/jxb/ert375>
- Suzuki N, Miller G, Morales J, Shulaev V, Torres MA, Mittler R. Respiratory burst oxidases: the engines of ROS signaling. *Curr Opin Plant Biol* 2011; 14:691-9; PMID:21862390; <http://dx.doi.org/10.1016/j.pbi.2011.07.014>
- Marino D, Dunand C, Puppo A, Pauly N. A burst of plant NADPH oxidases. *Trends Plant Sci* 2012; 17:9-15; PMID:22037416; <http://dx.doi.org/10.1016/j.tplants.2011.10.001>
- Scheler C, Durner J, Astier J. Nitric oxide and reactive oxygen species in plant biotic interactions. *Curr Opin Plant Biol* 2013; 16:534-9; PMID:23880111; <http://dx.doi.org/10.1016/j.pbi.2013.06.020>
- Torres MA. ROS in biotic interactions. *Physiol Plant* 2010; 138:414-29; PMID:20002601; <http://dx.doi.org/10.1111/j.1399-3054.2009.01326.x>
- Lehmann S, Mario Serrano M, L'Haridon F, Tjamos SE, Metraux J-P. Reactive oxygen species and plant resistance to fungal pathogens. *Phytochemistry* 2015; 112:54-62; PMID:25264341; <http://dx.doi.org/10.1016/j.phytochem.2014.08.027>
- Montiel J, Nava N, Cárdenas L, Sánchez-López R, Arthikala MK, Santana O, Sanchez F, Quinto C. 2012. A *Phaseolus vulgaris* NADPH oxidase gene is required for root infection by Rhizobia. *Plant Cell Physiol* 2012; 53:1751-67; PMID:22942250; <http://dx.doi.org/10.1093/pcp/pcs120>
- Marino D, Andrio E, Danchin EGJ, Oger E, Gucciardo S, Lambert A, Puppo A, Pauly N. A *Medicago truncatula* NADPH oxidase is involved in symbiotic nodule functioning. *New Phytol* 2011; 189:580-92; PMID:21155825; <http://dx.doi.org/10.1111/j.1469-8137.2010.03509.x>
- Puppo A, Pauly N, Boscari A, Manodn K, Brouquisse R. Hydrogen peroxide and nitric oxide: key regulators of the legume-Rhizobium and mycorrhizal symbiosis. *Antioxid Redox Sign* 2013; 18:1-18; PMID:23249379; <http://dx.doi.org/10.1089/ars.2012.4980>
- Salzer P, Corbiere H, Boller T. Hydrogen peroxide accumulation in *Medicago truncatula* roots colonized by the arbuscular mycorrhizal-forming fungus *Glomus intraradices*. *Planta* 1999; 208:319-25; <http://dx.doi.org/10.1007/s004250050565>

18. Fester T, Hause G. Accumulation of reactive oxygen species in arbuscular mycorrhizal roots. *Mycorrhiza* 2005; 15:373-9; PMID:15875223; <http://dx.doi.org/10.1007/s00572-005-0363-4>
19. Lanfranco L, Novero M, and Bonfante P. The mycorrhizal fungus *Gigaspora margarita* possesses a CuZn superoxide dismutase that is up-regulated during symbiosis with legume hosts. *Plant Physiol* 2005; 137:1319-30; PMID:15749992; <http://dx.doi.org/10.1104/pp.104.050435>
20. Benabdellah K, Azcon-Aguilar C, Valderas A, Speziga D, Fitzpatrick TB, and Ferrol N. GintPDX1 encodes a protein involved in vitamin B6 biosynthesis that is up-regulated by oxidative stress in the arbuscular mycorrhizal fungus *Glomus intraradices*. *New Phytol* 2009; 184:682-93; PMID:19674326; <http://dx.doi.org/10.1111/j.1469-8137.2009.02978.x>
21. Belmonto S, Calcagno C, Genre A, Puppo A, Pauly N, Luisa Lanfranco L. The *Medicago truncatula* *MtRbohE* gene is activated in arbusculated cells and is involved in root cortex colonization. *Planta* 2016; 243:251-62; PMID:26403286; <http://dx.doi.org/10.1007/s00425-015-2407-0>
22. Kärkönen A, Kuchitsu K. Reactive oxygen species in cell wall metabolism and development in plants. *Phytochemistry* 2015; 112:22-32; PMID:Can't; <http://dx.doi.org/10.1016/j.phytochem.2014.09.016>
23. Arthikala M-K, Montiel J, Nava N, Santana O, Sánchez-López R, Cárdenas L, Quinto C. PvRbohB negatively regulates *Rhizophagus irregularis* colonization in *Phaseolus vulgaris*. *Plant Cell Physiol* 2013; 54:1391-402; PMID:23788647; <http://dx.doi.org/10.1093/pcp/pct089>
24. Arthikala M-K, Sánchez-López R, Nava N, Santana O, Cárdenas L, Quinto C. *RbohB*, a *Phaseolus vulgaris* NADPH oxidase gene, enhances symbiosome number, bacteroid size, and nitrogen fixation in nodules and impairs mycorrhizal colonization. *New Phytol* 2014; 202:886-900; PMID:24571730; <http://dx.doi.org/10.1111/nph.12714>
25. Tudzynski P, Heller J, Siegmund U. Reactive oxygen species generation in fungal development and pathogenesis. *Curr Opin Microbiol* 2012; 15:653-9; PMID:23123514; <http://dx.doi.org/10.1016/j.mib.2012.10.002>
26. Tanaka A, Christensen MJ, Takemoto D, Park P, Scott B. Reactive oxygen species play a role in regulating a fungus-perennial ryegrass mutualistic interaction. *Plant Cell* 2006; 18:1052-66; PMID:16517760; <http://dx.doi.org/10.1105/tpc.105.039263>
27. Tanaka A, Takemoto D, Hyon GS, Park P, and Scott B. NoxA activation by the small GTPase RacA is required to maintain a mutualistic symbiotic association between *Epichloe festucae* and perennial ryegrass. *Mol Microbiol* 2008; 68:1165-78; PMID:18399936; <http://dx.doi.org/10.1111/j.1365-2958.2008.06217.x>