



**HAL**  
open science

## **Ixodes ricinus and Its Endosymbiont Midichloria mitochondrii: A Comparative Proteomic Analysis of Salivary Glands and Ovaries**

Monica Di Venere, Marco Fumagalli, Alessandra Cafiso, Leone de Marco, Sara Epis, Olivier Plantard, Anna Bardoni, Roberta Salvini, Simona Viglio, Chiara Bazzocchi, et al.

► **To cite this version:**

Monica Di Venere, Marco Fumagalli, Alessandra Cafiso, Leone de Marco, Sara Epis, et al.. Ixodes ricinus and Its Endosymbiont Midichloria mitochondrii: A Comparative Proteomic Analysis of Salivary Glands and Ovaries. PLoS ONE, 2015, 10 (9), pp.e0138842. 10.1371/journal.pone.0138842 . hal-02636927

**HAL Id: hal-02636927**

**<https://hal.inrae.fr/hal-02636927>**

Submitted on 27 May 2020

**HAL** is a multi-disciplinary open access archive for the deposit and dissemination of scientific research documents, whether they are published or not. The documents may come from teaching and research institutions in France or abroad, or from public or private research centers.

L'archive ouverte pluridisciplinaire **HAL**, est destinée au dépôt et à la diffusion de documents scientifiques de niveau recherche, publiés ou non, émanant des établissements d'enseignement et de recherche français ou étrangers, des laboratoires publics ou privés.



Distributed under a Creative Commons Attribution 4.0 International License

RESEARCH ARTICLE

# *Ixodes ricinus* and Its Endosymbiont *Midichloria mitochondrii*: A Comparative Proteomic Analysis of Salivary Glands and Ovaries

Monica Di Venere<sup>1</sup>, Marco Fumagalli<sup>2</sup>, Alessandra Cafiso<sup>3</sup>, Leone De Marco<sup>2,4</sup>, Sara Epis<sup>3</sup>, Olivier Plantard<sup>5,6</sup>, Anna Bardoni<sup>1</sup>, Roberta Salvini<sup>1</sup>, Simona Viglio<sup>1</sup>, Chiara Bazzocchi<sup>3</sup>, Paolo Iadarola<sup>2</sup>, Davide Sasserà<sup>2\*</sup>

**1** Department of Molecular Medicine, University of Pavia, Pavia, Italy, **2** Department of Biology and Biotechnology, University of Pavia, Pavia, Italy, **3** Department of Veterinary Science and Public Health, University of Milan, Milan, Italy, **4** School of Bioscience and Veterinary Medicine, University of Camerino, Camerino, Italy, **5** INRA, UMR1300 Biologie, Epidémiologie et Analyse de Risque en santé animale, CS 40706, Nantes, France, **6** LUNAM Université, Oniris, Ecole nationale vétérinaire, agroalimentaire et de l'alimentation Nantes-Atlantique, UMR BioEpAR, Nantes, France

\* [davide.sassera@unipv.it](mailto:davide.sassera@unipv.it)



**OPEN ACCESS**

**Citation:** Di Venere M, Fumagalli M, Cafiso A, De Marco L, Epis S, Plantard O, et al. (2015) *Ixodes ricinus* and Its Endosymbiont *Midichloria mitochondrii*: A Comparative Proteomic Analysis of Salivary Glands and Ovaries. PLoS ONE 10(9): e0138842. doi:10.1371/journal.pone.0138842

**Editor:** Ulrike Gertrud Munderloh, University of Minnesota, UNITED STATES

**Received:** June 25, 2015

**Accepted:** September 3, 2015

**Published:** September 23, 2015

**Copyright:** © 2015 Di Venere et al. This is an open access article distributed under the terms of the [Creative Commons Attribution License](https://creativecommons.org/licenses/by/4.0/), which permits unrestricted use, distribution, and reproduction in any medium, provided the original author and source are credited.

**Data Availability Statement:** All relevant data are within the paper and its Supporting Information files.

**Funding:** Funding for this work was provided by the Ministero dell'Istruzione, dell'Università e della Ricerca through FIR 2013—RBFR13BWBC\_001 to Davide Sasserà and PRIN 2012–2012A4F828 to Chiara Bazzocchi.

**Competing Interests:** The authors have declared that no competing interests exist.

## Abstract

Hard ticks are hematophagous arthropods that act as vectors of numerous pathogenic microorganisms of high relevance in human and veterinary medicine. *Ixodes ricinus* is one of the most important tick species in Europe, due to its role of vector of pathogenic bacteria such as *Borrelia burgdorferi* and *Anaplasma phagocytophilum*, of viruses such as tick borne encephalitis virus and of protozoans as *Babesia* spp. In addition to these pathogens, *I. ricinus* harbors a symbiotic bacterium, *Midichloria mitochondrii*. This is the dominant bacteria associated to *I. ricinus*, but its biological role is not yet understood. Most *M. mitochondrii* symbionts are localized in the tick ovaries, and they are transmitted to the progeny. *M. mitochondrii* bacteria have however also been detected in the salivary glands and saliva of *I. ricinus*, as well as in the blood of vertebrate hosts of the tick, prompting the hypothesis of an infectious role of this bacterium. To investigate, from a proteomic point of view, the tick *I. ricinus* and its symbiont, we generated the protein profile of the ovary tissue (OT) and of salivary glands (SG) of adult females of this tick species. To compare the OT and SG profiles, 2-DE profiling followed by LC-MS/MS protein identification were performed. We detected 21 spots showing significant differences in the relative abundance between the OT and SG, ten of which showed 4- to 18-fold increase/decrease in density. This work allowed to establish a method to characterize the proteome of *I. ricinus*, and to detect multiple proteins that exhibit a differential expression profile in OT and SG. Additionally, we were able to use an immunoproteomic approach to detect a protein from the symbiont. Finally, the method here developed will pave the way for future studies on the proteomics of *I. ricinus*, with the goals of better understanding the biology of this vector and of its symbiont *M. mitochondrii*.

## Introduction

Vector-borne diseases are among the leading causes of sanitary concern worldwide, being responsible for millions of deaths every year [1]. Although most vectors (such as mosquitoes) mainly exert their toll on developing countries, ticks are also widespread in the Northern hemisphere and are indeed considered the most important disease vectors in Europe and North America [2]. Many species of this order of obligate hematophagous parasites, the Ixodida, are capable of transmitting numerous viral, bacterial, and protozoan pathogens through the blood meal. Hard ticks in particular are dangerous vectors and, among them, the sheep tick *Ixodes ricinus* is one of the most relevant species. The importance of *I. ricinus* is due to its wide area of distribution (i.e. Europe and Northern Africa), to its low host specificity and capacity to parasitize humans, and to its central role in the transmission of multiple infectious agents [3]. *Borrelia* spp, the causative agent of Lyme disease, is possibly the most important microorganism vectored by *I. ricinus*. This bacterium is responsible for hundreds of thousands of novel infections each year and its role in multiple chronic pathologies is currently being investigated [4]. Additionally, *I. ricinus* is capable of transmitting numerous other bacteria, such as *Rickettsia* spp. and *Ehrlichia* spp., but also the flavivirus responsible for Tick Borne Encephalitis and the etiological protozoan agents of babesiosis [5].

In addition to the aforementioned pathogens, *I. ricinus* harbors a recently described bacterium named *Midichloria mitochondrii* [6]. The importance of this bacterial presence is testified by its prevalence in the field, as 100% of females, eggs and immatures of *I. ricinus* harbor *M. mitochondrii* bacteria [7]. Additionally, the bacterial load has been found to be important, with up to 15 million bacteria counted in one single tick, localized mainly in the ovaries or ovarian primordia [8, 9]. As all member of the bacterial order Rickettsiales, *M. mitochondrii* is intracellular, however its uniqueness lays in that it was observed inside the mitochondria of the host ovarian cells [9]. Finally, *M. mitochondrii* has also been detected in the salivary glands of adult females of *I. ricinus*, as well as in the blood of mammalian tick hosts [10, 11]. However, investigations on its potential role as infectious agent have never provided adequate answers concerning the possible link to pathological effects. As a consequence, new tools are required for answering this question.

With the advent of proteomics, the screening of proteins as potential biomarkers has achieved important progresses. Detection and identification of proteins in different organs/tissues, with the aim of understanding whether they represent an attractive tool for monitoring alterations in these districts, is currently an area of increasing interest. Recently, studies have been focused on the characterization of *I. ricinus* salivary glands and midgut proteomes, in a much-needed effort to better understand the role of these organs, fundamental in the tick bite and metabolism [12, 13].

Our plan was then to expand the knowledge of *I. ricinus* protein profiles by applying two-dimensional electrophoresis (2-DE) as a tool for comparing the protein pattern of the ovary with that of salivary glands (i.e. the sialome). The first goal of this study is to give insight into the process of oogenesis, central to the tick life cycle. Additionally we planned to provide clues on the symbiotic relationship between *I. ricinus* and its symbiont *M. mitochondrii*, which is highly prevalent in the ovaries. Moreover, to seek the best possible protocol for future studies on *I. ricinus* proteomics, we focused on a careful optimization of the proteomic analysis pipeline.

## Materials and Methods

### Ethics Statement

*I. ricinus* ticks were collected from roe-deer (*Capreolus capreolus*) in the Chize forest (Northern France) in February 2014, in strict accordance with the recommendations in the french

National charter on the ethics of animal experimentation and the DIRECTIVE 2010/63/EU OF THE EUROPEAN PARLIAMENT AND OF THE COUNCIL of 22 September 2010 on the protection of animals used for scientific purposes. The protocol was approved by the "Comité d'Ethique en Expérimentation Animale de l'Université Claude Bernard Lyon 1" (CEEA-55; DR2014-09). The capture of roe deers was carried out only by competent persons using methods which do not cause the animals avoidable pain, suffering, distress or lasting harm.

## Ticks collection, protein and DNA extraction

One hundred and twenty semi-engorged *I. ricinus* ticks were collected from roe-deer (*Capreolus capreolus*) in the Chize forest (Northern France) in February 2014. semi-engorged ticks were selected as this stage presents the highest combined development of the two investigated organs, ovaries and salivary glands, and also presents a high concentration of *M. mitochondrii* symbionts [8]. Ticks were manually dissected under a stereomicroscope Leica (Wetzlar, Germany), to collect salivary glands and ovaries. Salivary glands and ovaries from twenty ticks were pooled in 100  $\mu$ L PBS with 1.5  $\mu$ L of 1x protease inhibitor (Sigma). After mechanical disruption of tissues, 20  $\mu$ L of lysate were recovered for subsequent DNA extraction. The remaining volume was subjected to sonication with Digital Sonifier 450 (Branson Ultrasonic Corporation, Danbury, CT, USA), with three five-second treatments. Each sample was then centrifuged at maximum speed for 10 min and supernatants were recovered and stored at  $-80^{\circ}\text{C}$  until use. DNA from each sample was extracted using the Qiagen DNeasy Blood and Tissue Kit (Hilden, Germany) following manufacturer instructions. DNAs were eluted in 50  $\mu$ L of sterile water and stored at  $-20^{\circ}\text{C}$  until molecular analysis.

## PCR

The presence of common tick-borne pathogenic bacteria [14] in the extracted DNA was screened using previously described PCR protocols for *Borrelia burgdorferi* [15], *Anaplasma* spp., *Ehrlichia* spp. and *Rickettsia* spp. [16]. Samples negative for the presence of pathogens were subsequently analyzed for absolute quantification of *M. mitochondrii* content using a previously described Sybr green real-time PCR approach [8] based on the amplifications of a fragment of the *M. mitochondrii gyrB* gene (coding for the protein gyrase B) and a fragment of the *I. ricinus* nuclear gene *cal* (coding for the protein calreticulin). Results were expressed as ratio of *gyrB/cal* copy numbers.

## Quantification of proteins

The Bicinchoninic Acid (BCA) assay [17] was applied to obtain the exact quantification of each pool of proteins extracted from salivary glands and ovaries. Bovine serum albumin was the standard protein used for the production of calibration curves, in the range of concentrations between 5 and 25  $\mu\text{g}/\text{mL}$ .

## Two-Dimensional Electrophoresis (2-DE)

About 250  $\mu\text{g}$  of extracted proteins were dissolved in 125  $\mu\text{L}$  of rehydration buffer (8 M urea, 4% CHAPS (w/v), 65 mM DTE, 0.8% carrier ampholytes (v/v), 0.5% bromophenol blue) and loaded onto 7 cm IPG strips, with nonlinear (NL) pH 3–10 or linear pH 4–7 gradient range, Amersham Biosciences (Amersham, UK). Strips were rehydrated without applying voltage for 1 h at  $20^{\circ}\text{C}$ . The first-dimensional IEF was carried out at  $15^{\circ}\text{C}$  using an Ettan IPGphor system (Amersham Biosciences), programmed with the following voltage gradient: 30 V for 8 h, 120 V for 1 h, 500 V for 0.5 h, 1000 V for 0.5 h and 5000 V until a total of 25–27 kV/h was reached.

Reduction/alkylation steps were applied between the first and the second dimension. The focused IPG strips were incubated for 15 min at room temperature in 6 M urea, 2% (w/v) SDS, 50 mM Tris pH 6.8, glycerol 30%, containing 2% (w/v) DTE, followed by a second incubation of 15 min in the same buffer containing 2.5% (w/v) iodoacetamide and 0.5% bromophenol blue. At the end of the IEF step, strips were held in place with 0.4% low melting temperature agarose and loaded onto 8x6 cm slabs, 12.5% SDS polyacrylamide gels. Electrophoresis was carried out at a constant current of 10 mA per gel in a PROTEAN II xi 2-D Cell equipment BioRad (Berkeley, California), until the buffer front line was 1 mm from the bottom of the gels. The 2-DE gels were stained with “Blue silver” (colloidal Coomassie G-250 staining), according to Candiano et al [18]. Digital images of stained gels were acquired using VersaDoc Imaging Model 3000 (BioRad) and then subjected to quali/quantitative analysis using the PD Quest (BioRad) version 8.0.1 software. Scanned images were filtered and smoothed to remove background noise, vertical/horizontal streaking and gel artifacts and then normalized to eliminate the variability of each sample. The software then determined the amount of spots present and calculated their intensity by applying the following algorithm: peak value (ODs/image units)  $\ast \sigma_x \ast \sigma_y$  (standard deviations in x and y).

## Reproducibility of the study

To verify the reproducibility of the study, 2-DE maps were obtained in triplicate for each of the analyzed salivary glands (SG) and ovary tissues (OT) pools. Those presented in this report are the best representative gels among all generated that showed spots consistently present. Experimental steps concerning sample preparation, electrophoretic run and gel staining were performed “in parallel” on all samples.

## *In situ* enzymatic digestion

Enzymatic digestion was performed as previously described [19]. Briefly, the selected spots were carefully excised from the gel, placed into Eppendorf tubes and broken into small pieces. This material was then washed twice with aliquots (200  $\mu$ L) of 100 mM ammonium bicarbonate buffer pH 7.8, 50% acetonitrile (ACN) and kept under stirring overnight, until complete destaining. Gels were dehydrated by addition of ACN (100  $\mu$ L). After removal of the organic solvent, reduction was performed by addition of 50  $\mu$ L of 10 mM Dithiothreitol (DTT) solution (40 min at 37°C). DTT was replaced with 50  $\mu$ L of 55 mM iodoacetamide for 45 min at 56°C. This solution was removed and the gel pieces were washed twice with 200  $\mu$ L of 100 mM ammonium bicarbonate for 10 min, while vortexing. The wash solution was removed and gel dehydrated by addition of 200  $\mu$ L of ACN until the gel pieces became an opaque-white color. ACN was finally removed and gel pieces were dried under vacuum. Gels were rehydrated by addition of 75  $\mu$ L of 100 mM ammonium bicarbonate buffer pH 7.8, containing 20 ng/ $\mu$ L sequencing grade trypsin (Promega, Madison, WI, USA) and digestion was performed incubating overnight at 37°C. Following enzymatic digestion, the resultant peptides were extracted sequentially from gel matrix by a three-step treatment (each step at 37°C for 15 min) with 50  $\mu$ L of 50% ACN in water, 5% trifluoroacetic acid (TFA) and finally with 50  $\mu$ L of 100% ACN. Each extraction involved 10 min of stirring followed by centrifugation and removal of the supernatant. The original supernatant and those obtained from sequential extractions were pooled, dried and stored at -80°C until mass spectrometric analysis. At the moment of use, the peptide mixture was solubilized in 100  $\mu$ L of 0.1% formic acid (FA) for MS analyses.

## LC-MS/MS

All analyses were carried out on an LC-MS (Thermo Finnigan, San Jose, CA, USA) system consisting of a thermostated column oven Surveyor autosampler controlled at 25°C, a quaternary gradient Surveyor MS pump equipped with a diode array detector, and an Linear Trap Quadrupole (LTQ) mass spectrometer with electrospray ionization ion source controlled by Xcalibur software 1.4. Analytes were separated by RP-HPLC on a Jupiter (Phenomenex, Torrance, CA, USA) C<sub>18</sub> column (150 x 2 mm, 4 μm, 90 Å particle size) using a linear gradient (2–60% solvent B in 60 min) in which solvent A consisted of 0.1% aqueous FA and solvent B consisted of ACN containing 0.1% FA. Flow-rate was 0.2 mL/min. Mass spectra were generated in positive ion mode under constant instrumental conditions: source voltage 5.0 kV, capillary voltage 46 V, sheath gas flow 40 (arbitrary units), auxiliary gas flow 10 (arbitrary units), sweep gas flow 1 (arbitrary units), capillary temperature 200°C, tube lens voltage –105 V. MS/MS spectra, obtained by CID studies in the linear ion trap, were performed with an isolation width of 3 Th *m/z*, the activation amplitude was 35% of ejection RF amplitude that corresponds to 1.58 V.

Data processing was performed using Peaks studio 4.5 software. An ad-hoc database was obtained selecting from the NCBI database all the protein sequences belonging to the following taxonomic groups: *Ixodida* (taxid:6935), *Cervidae* (taxid:9850), *Borrelia* (taxid:138), *Rickettsiales* (taxid:766). The mass lists were searched against the SwissProt and the ad-hoc protein database under continued mode (MS plus MS/MS), with the following parameters: trypsin specificity, five missed cleavages, peptide tolerance at 0.2 Da, MS/MS tolerance at 0.25 Da, peptide charge 1, 2, 3+, and experimental mass values: monoisotopic.

## Western Blotting

Western blot analysis was effected starting from 100 micrograms of proteins extracted from the OT and SG pool that exhibited the highest concentrations of *M. mitochondrii* based on *GyrB/cal* gene ratio. Separated proteins were transferred onto nitrocellulose membrane by using a Trans Blot Electrophoresis Transfer Cell (BioRad) and applying a current of 200 mA for 1.20 h in running buffer (25 mM Tris pH 8.3, 192 mM glycine, 20% methanol). To verify the transfer of proteins, the membrane was stained with Ponceau Red and washed with PBS (10 ml) for 10 min. After 1h incubation in 5% milk (10 ml) diluted in PBS and three additional washes with PBST(0,1% Tween (10 ml), the membrane was incubated overnight with the polyclonal antibodies against the *M. mitochondrii* flagellar protein FliD [10] at a dilution 1:5000 in 1% milk. After washing the membrane three times with PBST (10 ml), incubation with the secondary antibody (Dako, Glostrup, Denmark) was carried out for 1 h at room temperature with polyclonal goat anti-rabbit immunoglobulin diluted 1:2000 in 1% milk in PBST. The membrane was finally washed three times with PBS and incubated in ECL Prime solution (GE Healthcare, Uppsala, Sweden). Immunoblots were acquired with the ImageQuant LAS 4000 analyzer (GE Healthcare).

## Results

### PCR

Concentration of *M. mitochondrii* and presence of tick-borne pathogens was assessed in all the OT and SG pools by performing PCR on the DNA extracted from the samples. Two out of six OT and SG pools were positive to tick-borne pathogens and were thus excluded from subsequent analyses. PCR for the detection of *M. mitochondrii* was performed on the remaining samples and all OT and SG pools resulted, as expected, positive to *M. mitochondrii*. The copy

numbers of *gyrB* and *cal* genes and the *gyrB/cal* x1000 ratios are provided in [S1 Table](#) of Supporting Information.

## Two-dimensional electrophoresis with nonlinear pH 3–10 gradient range

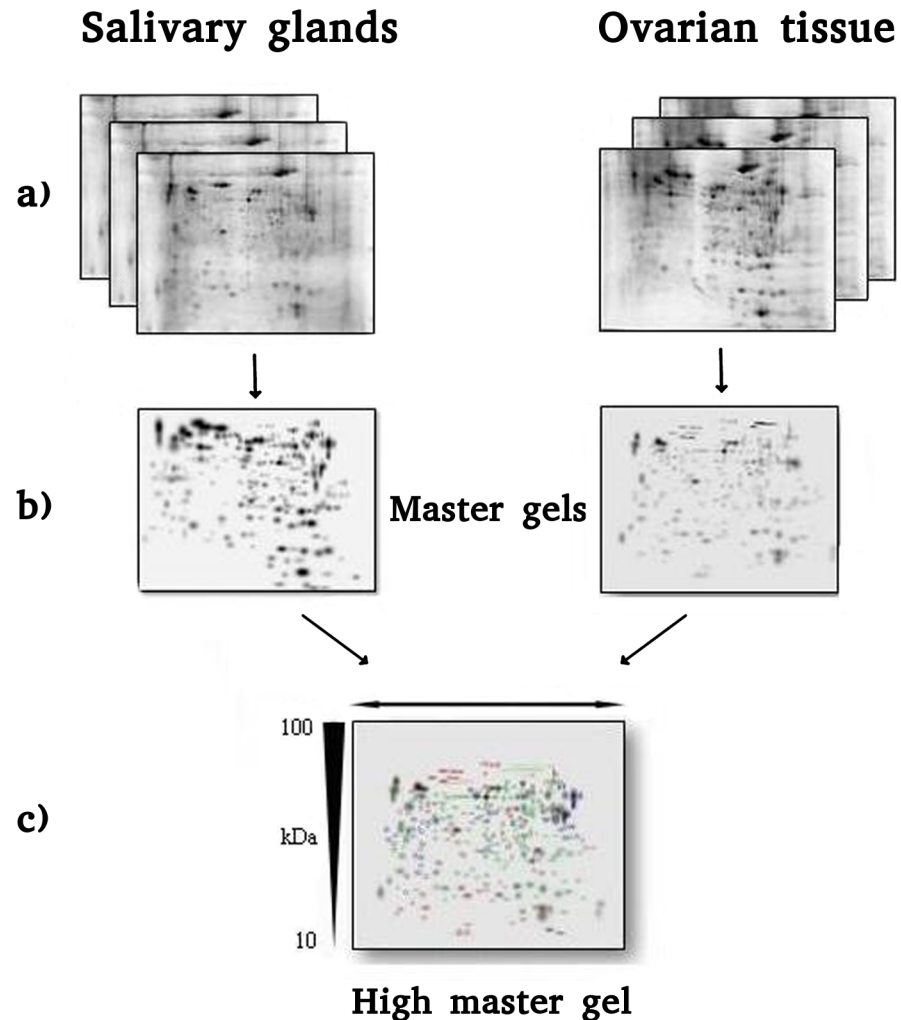
To identify *I. ricinus* proteins differentially expressed between OT and SG, as well as proteins of the *M. mitochondrii* symbiont, parallel 2-DE analyses were performed on the four salivary glands (SG) and ovary tissues (OT) of *I. ricinus* adult ticks that were infected by *M. mitochondrii* that resulted free from other bacterial pathogen presence. Gels were scanned and spots were detected using the spot detection wizard tool, after defining and saving a set of detection parameters. Following spot detection, the original gel scans were filtered and smoothed to clarify spots, remove vertical and horizontal streaks, and remove speckles. Three dimensional Gaussian spots were then created from filtered images. Three images were created from the process: the original raw 2-D scan, the filtered image, and the Gaussian image. A match set for each pool was then created for comparison after the gel images had been aligned and automatically overlaid. If a spot was saturated, irregularly shaped, or otherwise of poor quality, then the Gaussian modeling was unable to accurately determine quantity. In these cases, the spot was defined in the filtered image using the spot boundary tools. Thus, for each pool, a master gel was produced which included protein spots only if present at least in two out of the three gels. The mean spot number in Coomassie stained gels was  $235 \pm 29$  in SG and  $221 \pm 21$  in OT. A set of spots chosen from the two master gels were excised, destained, digested with trypsin, and peptides were submitted to LC-MS/MS. The MS fragmentation data were searched against the SwissProt and the ad-hoc designed protein databases, and the queries were performed using the Peaks studio 4.5 software. A total of 47 proteins were identified, 20 from SG and 27 from OT. A complete list of the identified proteins is presented in [S2 Table](#).

The master gels from both SG and OT pools showed similar patterns of proteins such that they could be matched to each other. This facilitated the correlation of gels and the creation of a virtual image, indicated as high master gel (HMG), comprehensive of all matched spots derived from master gels. The procedure described is summarized in [Fig 1](#).

## Differentially expressed proteins

Comparison of 2-DE patterns for SG and OT revealed several qualitative and quantitative differences between the two sets of pools. In terms of presence/absence of spots, qualitative differences are represented in [Fig 2](#). As shown, while the majority of spots were common to both SG and OT ( $170 \pm 25$ , evidenced in green), some protein spots present in SG profile were absent from the OT one and viceversa. In particular, 81 spots (marked in red) were exclusive of SG and 57 spots (labelled in blue) were detected solely in OT.

Spot quantities of all gels were normalized to remove non expression-related variations in spot intensity, and data were exported as clipboard for further statistical analysis. The raw amount of each protein in a gel was divided by the total quantity of all proteins (spots) that were included in that gel. The results were evaluated in terms of spot optical density (OD). Statistical analysis of PDQuest data allowed to assess differences in protein abundance on a protein-by-protein basis. According to guidelines for differential proteomic research, only spots that showed a change in density at  $p < 0.01$  (by Student's t-test) were considered "differentially expressed" in the two pools of samples. This term was used here meaning differential protein abundance determined by several processes, including changes in protein biosynthesis and modification or degradation. Using these criteria, 21 spots differed by the ratio indicated above and were selected by the statistical program as spots having significant differences in the relative abundance between SG and OT. In particular, ten among these spots (indicated by



**Fig 1. (A)** 2-DE maps of three different pools of salivary gland (SG, left) and ovarian tissue (OT, right) of *I. ricinus*, obtained by performing IEF on 7 cm IPG strips with 3–10 NL pH range and SDS-PAGE in the second dimension on 8x6 cm slabs, 12.5% T gels. **(B)** SG and OT master gels obtained merging the three gels for each sample type. **(C)** 2-DE High Master Gel created comparing the SG and OT gels.

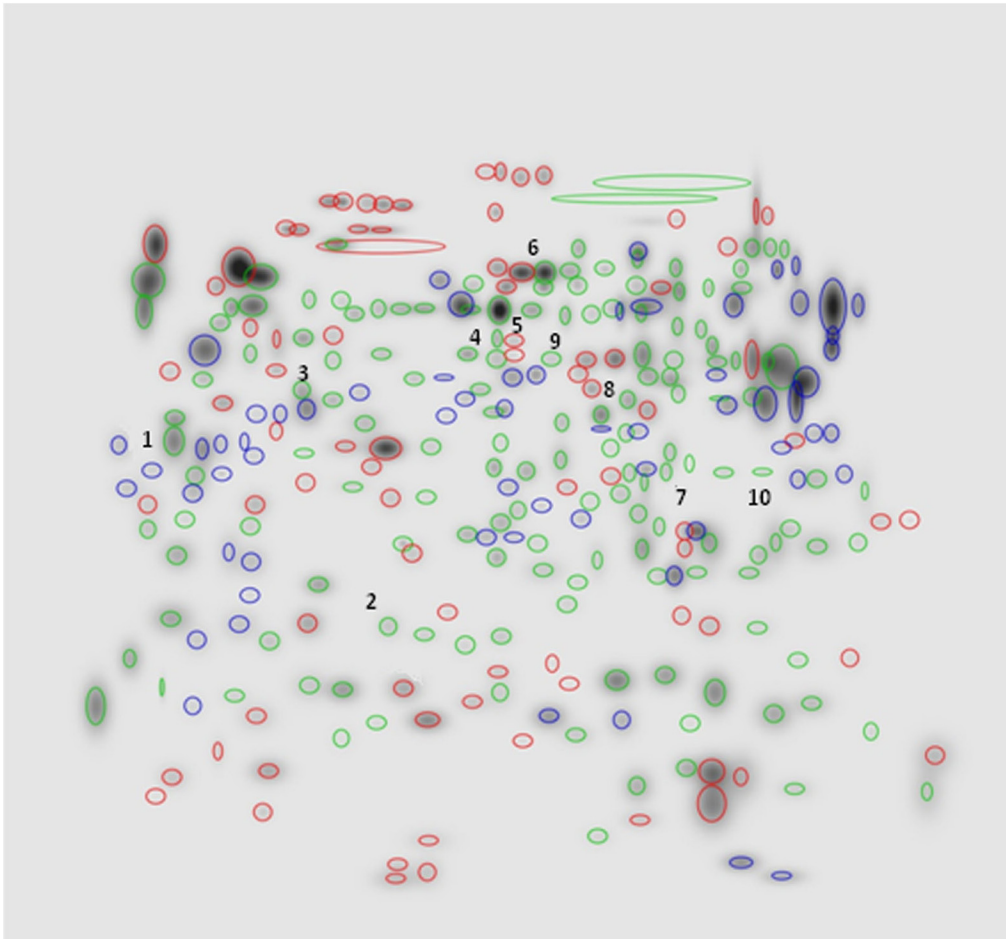
doi:10.1371/journal.pone.0138842.g001

numbers 1 to 10 in HMG of Fig 2) showed 4- to 18-fold increase/decrease in density. A set of panels, shown in Fig 3, was generated to highlight density variances of these spots between the two sets of pools (i.e. SG and OT).

In these panels the region of stained gel containing the spot of interest was zoomed and up-/downregulation graphically represented. Efforts have been devoted to the identification of these proteins, to investigate whether they might have an involvement in the biological processes characteristic of ovaries and salivary glands, or in the interaction between *M. mitochondrii* and *I. ricinus*.

These spots were thus carefully excised from the gel, destained, digested with trypsin, and peptides were submitted to LC-MS/MS following the procedure detailed in the Materials and Methods section. The MS fragmentation data were searched against the SwissProt and the ad-hoc designed protein databases, and the queries were performed using the Peaks studio 4.5 software. All but two (spots 2 and 9) of the queried proteins were identified. The low abundance of proteins corresponding to spots 2 and 9 most likely determined the poor quality of





**Fig 2. High Master gel, showing qualitative differences between the SG and OT 2-DE master gel patterns (NL, pH 3–10 gradient range).** Labelled in green: spots ( $n = 170 \pm 25$ ) common to both SG and OT. Labelled in red: spots ( $n = 81$ ) exclusive of SG. Labelled in blue: spots ( $n = 57$ ) detected solely in OT.

doi:10.1371/journal.pone.0138842.g002

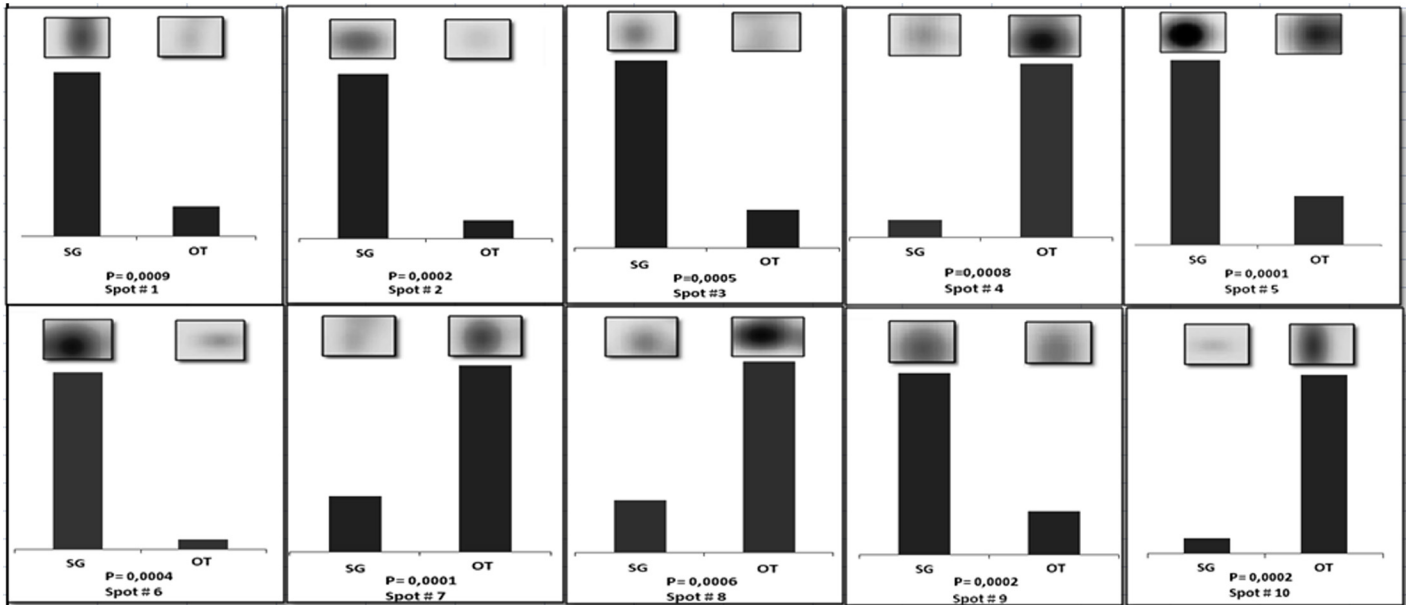
their MS signals and failure in their identification. The fact that unique proteins were identified for all other analyzed spots suggested that, at least for these spots, spot overlap was minimized.

Detailed identification data, including accession number, theoretical *pI*, molecular mass, percent of sequence coverage, number of peptides identified, and MOWSE score of each of the nine proteins identified are reported in [Table 1](#).

Additional information concerning the primary sequence of all peptides identified for each protein analyzed was included in [S3 Table](#) of Supporting Information.

### Western blotting

Given the aim of our study, proteins from SG and OT profiles of the pool that exhibited the highest concentrations of *M. mitochondri* were transferred onto PVDF membranes and incubated with the polyclonal anti-FliD antibodies, followed by anti-rabbit antibody. Based on: i) its position (*pI*/*Mr*) on the PVDF membrane and ii) its recognition by the antibody, the protein spot indicated by an arrow in panel A (OT pool) of [Fig 4](#), was tentatively assigned to FliD. As shown in panel B of [Fig 4](#), despite the appearance of interfering spots, the hypothetical FliD spot was undetectable in the SG profile. This result is expected and the load of *M. mitochondrii* bacteria is much higher in ovaries than in salivary glands ([S1 Table](#)) [[10](#), [11](#)].



**Fig 3. Set of panels showing the density variances between SG and OT pools for spots 1 to 10.** In each panel the region of the stained gel containing the spot of interest was magnified (inset) and the up-/downregulation graphically represented. Pvalue indicating statistical significant density variance (T-test) is reported in each panel.

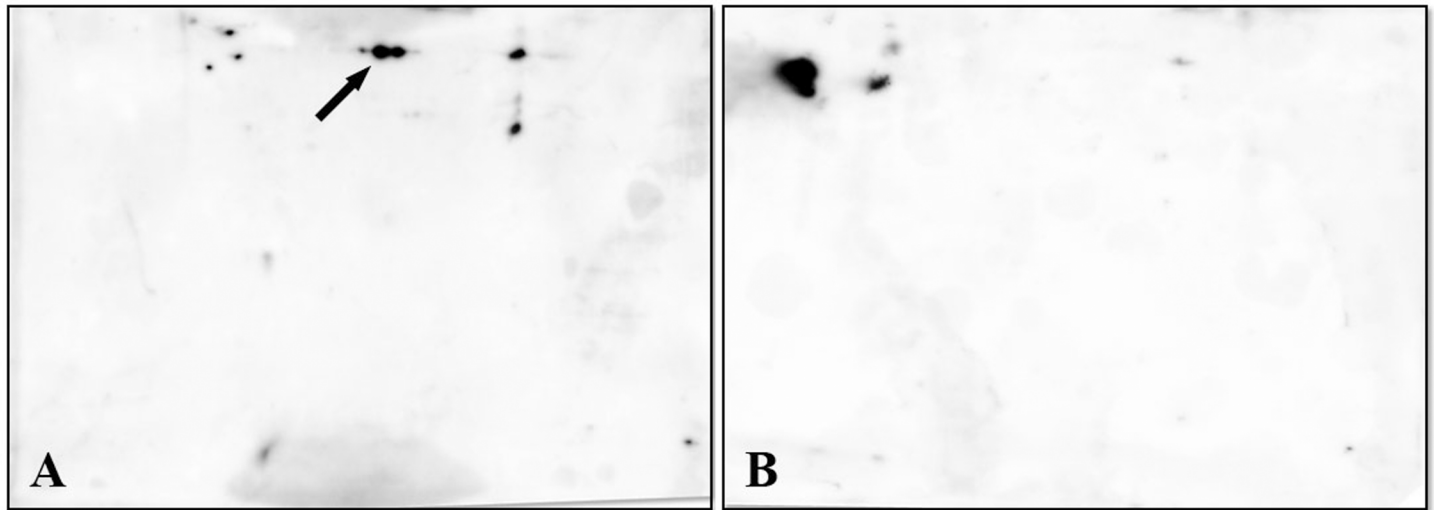
doi:10.1371/journal.pone.0138842.g003

To achieve identification, the immunoreactive protein spot was thus excised from the original OT gel and submitted to the LC-MS/MS procedure indicated above. The results (shown in Table 2) confirmed what appeared evident from the visual inspection of the gel, i.e. the analyzed spot, rather than comprising a single polypeptide chain, was a mixture of at least three components, i.e. Endoplasmic Reticulum Protein 60, putative actin 2, and an unknown protein

**Table 1. Up and downregulated proteins identified by LC-MS/MS.**

Spot	Accession	Description	Mass	Score (%)	Coverage (%)	Query matched
1	gi 442756551 gb JAA70434.1	Putative heat shock 70 kda protein 5 [ <i>Ixodes ricinus</i> ]	72,595	99	8,05%	5
2	/	Not detected	/	/	/	/
3	gi 322422107 gb ADX01224.1	Beta actin [ <i>Ixodes ricinus</i> ]	16,038	90	6,94%	1
4	gi 215497327 gb EEC06821.1	Enolase, putative [ <i>Ixodes scapularis</i> ]	21,493	90	4,52%	1
5	gi 442753241 gb JAA68780.1	Putative enolase [ <i>Ixodes ricinus</i> ]	47,145	99	23,79%	6
6	gi 215491972 gb EEC01613.1	Protein disulfide isomerase, putative [ <i>Ixodes scapularis</i> ]	54,929	98	6,38%	4
7	gi 442748259 gb JAA66289.1	Putative 3-hydroxy-3-methylglutaryl-coa reductase [ <i>Borrelia</i> spp]	10,741	20	22,43%	2
8	gi 597718071 gb AHN19768.1	Serum albumin, partial [ <i>Cervus nippon</i> ]	66,15	75	6,67%	4
9	/	Not detected	/	/	/	/
10	gi 442754645 gb JAA69482.1	Putative heat shock protein [ <i>Ixodes ricinus</i> ]	36,782	82	4,01%	2

doi:10.1371/journal.pone.0138842.t001



**Fig 4. Immunoblotting of proteins from SG and OT profiles generated as indicated in Fig 1.** PVDF membranes were incubated with the rabbit polyclonal antibodies anti-FliD of *M. mitochondrii*, followed by anti-rabbit antibody. The protein spot(s) indicated by an arrow in Panel A (OT pool) was tentatively assigned to FliD. Panel B shows the SG profile in which the hypothetical FliD spot is undetectable.

doi:10.1371/journal.pone.0138842.g004

from *Borrelia*. Information concerning the primary sequence of all peptides identified for each protein analyzed have been included in [S4 Table](#) of Supporting Information.

We hypothesized that the fact that the putative flagellar protein FliD was, most likely, less abundant compared to the bulk of other proteins present in the spot, prevented its identification. This hypothesis was strengthened by the poor quality of MS sequence data obtained from third spot (or cluster of spots). This indeed made it difficult to define exactly whether the FliD protein of was actually present within the spot(s) considered.

### Two-dimensional electrophoresis with pH 4–7 gradient range: identification of FliD

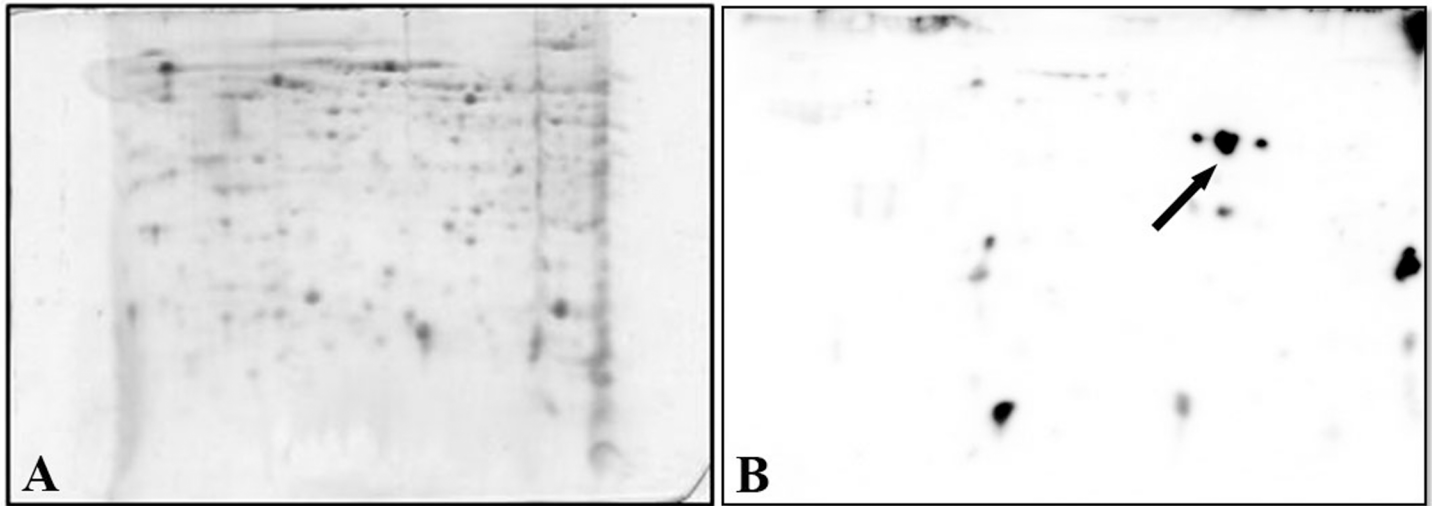
In an effort to overcome the limitations indicated above and to definitively establish (or exclude) the presence of FliD under the spot(s) examined in the OT pool, we worked on the optimization of the electrophoretic conditions. After performing a extensive set of trials with various electrophoretic conditions, the best option was found to be the application of a narrow range pH gradient (linear pH 4–7). This provided a better resolution of proteins, minimizing potential spot overlaps ([Fig 5A](#)). The immunoreactive protein spot (indicated by an arrow in PVDF membrane, B) was evidenced in OT profile obtained under the experimental conditions mentioned above.

As a validation of data discussed above, no spot was reactive against the antibody in SG profile (data not shown). After spot excision and tryptic digestion, LC-MS identification confirmed the presence of flagellar protein FliD under this spot ([Table 3](#)).

**Table 2. List of proteins identified under the immunoreactive spot.**

Accession	Description	Mass	Score (%)	Coverage(%)	Query matched
gij 442747467 gb JAA65893.1	Putative erp60 [ <i>Ixodes ricinus</i> ]	52,115	98	6,45%	3
gij 556065071 gb JAB75571.1	putative actin-2 [ <i>Ixodes ricinus</i> ]	36,27	89	9,79%	2
gij 6841058 gb AAF28881.1	unknown [ <i>Borrelia hermsii</i> ]	29,518	25	3,92%	1

doi:10.1371/journal.pone.0138842.t002



**Fig 5. (A)** 2-DE map of OT obtained by performing IEF on a 4–7 linear pH range and SDS-PAGE on a constant 12,5% T in the second dimension, to separate proteins clustered in the single spot shown in Fig 4. **(B)** Immunoblotting of the gel slab indicated in Panel A. Arrow points to spot originated from separation and identified as FLiD.

doi:10.1371/journal.pone.0138842.g005

The primary sequence of peptides found for identification of protein analyzed was included in S5 Table of Supporting Information.

## Discussion

### Analysis of common proteins differentially expressed

A recent study presented the identification of hundreds of proteins in salivary glands of *I. ricinus* in the presence of the pathogenic tick-borne spirochete *B. burgdorferi*, demonstrating that the expression of proteins modulated by infection differed as a function of the various strains of *B. burgdorferi* [20]. In the present study, a total of 47 spots, 27 from OT and 20 from SG were selected for sequencing. Our results were fully congruent with those previously published, validating our approach and confirming the high expression level of a number of proteins, such as Heat shock protein, Protein disulfide isomerase, Enolase, Actin, Hemelipoglycoprotein precursor (putative) etc. This sequencing effort detected only proteins that could be readily identified as belonging to the tick proteome, or that could not be identified unambiguously, but did not reveal the presence of proteins belonging to the bacterial symbiont *M. mitochondrii*. To evaluate whether detection of symbiont proteins was possible, we thus designed a specific immunoproteomic approach, described above and discussed below.

To explore qualitative and quantitative differences between SG and OT of *I. ricinus* infected by *M. mitochondrii*, and to identify tissue-specific proteins, as well as proteins involved in the interaction between the bacterium and the tick, we compared the proteomic profiles of these tissues. The reproducible patterns generated for both tissues evidenced  $170 \pm 25$  spots shared between SG and OT. In addition, 81 protein spots were exclusive of SG profile and 57 spots

**Table 3. List of proteins that confirmed the presence of FLiD.**

Accession	Description	Mass	Score (%)	Coverage(%)	Query matched
/	Flagellar protein FLiD OS = <i>Midichloria mitochondrii</i>	100,58	84	14,64%	13
gi 442747467 gb JAA65893.1	Putative erp60 [ <i>Ixodes ricinus</i> ]	52,115	98	6,45%	3

doi:10.1371/journal.pone.0138842.t003

were detected solely in OT. In particular, we selected and investigated the 10 proteins that exhibited the largest changes in density (4- to 18-fold increase/decrease, see Fig 2, Fig 3 and Table 1). Proteins under spots 1 and 10, both identified as putative heat shock proteins (HSP), were heavily differentially expressed. Putative HSP70 detected under spot 1 was 6-fold more abundant in SG than in OT. By contrast, the putative HSP identified under spot 10 was 11-fold more abundant in OT than in SG. Heat shock proteins are chaperones that, together with other stress response proteins, are well known to protect cells and organisms from environmental stress. HSP70, is involved in many cellular processes, including folding and refolding of nascent and/or misfolded proteins, protein translocation across membranes, and degradation of terminally misfolded or aggregated proteins [21]. The role played by HSP proteins in the growth and survival of *I. ricinus* is potentially very important. Being involved in the binding and presentation of antigens to the immune system, they constitute candidate molecules that could be involved in tick immune response to pathogen infection. Interestingly, a connection may exist between pathogen infection and tick response to stress conditions. In response to heat and other stress (cold, hunger), nearly all ticks undergo diapause. Indeed HSPs involved in the diapause of multiple species of insects were reported [22], suggesting that they may play key roles in the physiological response to stress of other arthropods, such as ticks. HSP70 is more expressed in salivary glands than in ovarian tissue and midgut and its expression increases with female tick feeding, suggesting a possible role of this protein during blood ingestion and/or digestion [23]. We speculated that this could be ascribed to the great changes in structure that the salivary glands of hard ticks undergo during blood feeding with an increase in size and the acceleration of protein synthesis [24]. However, the fact that HSP70 was found to be down regulated in *Anaplasma phagocytophilum* infected whole *Ixodes scapularis* ticks, guts and salivary glands [23], may suggest that these proteins have a different function during pathogen infection.

The protein identified under spot 3 was  $\beta$ -actin. The reason of its 5-fold higher expression in SG compared to OT is still a matter of speculation. First, we hypothesized that this was a consequence of the importance of SG in tick feeding. Actin is an important structural protein required for exoskeleton rearrangement during tick engorgement [25] and is a common target of many bacterial proteins. It has been shown that the cellular responses induced by a variety of stimuli and pathogens involve changes in cell morphology and the polymerization state of actin [26–27–28]. Studies in prokaryotes and eukaryotes demonstrated that nutrition and stress affect the expression of housekeeping genes [29]. For example the low expression of actin shown in the unfed first instars nymphs of *I. scapularis* is likely due to low nutrition levels since they have not yet taken the blood meal and the nutrients incorporated into the eggs have been depleted by larval development [30]. The significant differences observed during and immediately after feeding in females are likely related to the dynamic changes that occur in the physiology of ticks preparing for reproduction. It has also been shown that silencing the expression of actin in the soft tick *Ornithodoros moubata* resulted in impairment of tick feeding by a global attenuation of tick activity unrelated to specific function associated with engorgement [29]. Finally, further aspects should be taken into consideration. *I. ricinus*, as *I. scapularis*, are vectors of bacterial pathogens including *A. phagocytophilum*, and *B. burgdorferi* [30,31]. To persist in their hosts, obligate intracellular bacteria have evolved a variety of mechanisms including modulating host signaling and the actin cytoskeleton [32]. If this hypothesis proves correct, it may be speculated that the high concentration of actin detected in SG of *I. ricinus* could be the result of a sort of survival strategy developed by the symbiont *M. mitochondrii* to persist in its arthropod vector.

The identification of enolase under spots 4 and 5 attracted our interest. Alpha-enolase, one of the most abundantly expressed proteins in human cytosol, is a key glycolytic enzyme that

converts 2-phosphoglycerate to phosphoenolpyruvate [33]. In blood-feeding arthropods this protein is secreted in saliva and inoculated into the host during feeding. The finding of 4-fold higher expression of enolase in SG compared to OT (spot 5) was not surprising. This result may account for one of the pivotal roles of this enzyme. Enolase, in fact, promotes fibrinolysis and maintains blood fluidity during blood ingestion and distribution in the tick midgut. Fibrinolysis is the natural process of fibrin clot solubilization and, in ticks, this process is essential for dissolving any clot that might be formed during feeding, as well as preventing clotting of the ingested blood meal in its midgut [34]. This said, the higher expression level in OT (10-fold more expressed than in SG) of another putative enolase (spot 4) was a result apparently in contradiction with the previous one. However, the multifunctionality of this protein in both prokaryotes and eukaryotes may probably account for this finding. In fact, it has been shown in *Rhipicephalus microplus* [35] that, to support the energy-intensive processes of embryogenesis, before blastoderm formation, glycogen reserves are preferentially mobilized. As a consequence, protein degradation and gluconeogenesis intensify to supply the embryo with sufficient glucose to allow glycogen re-synthesis. If glycogen is the main energy source during the early stages of *R. microplus* embryogenesis, protein degradation increases during late embryogenesis [35]. Thus, the use of amino acids as a substrate for gluconeogenesis and the subsequent glycogen re-synthesis play an important role during the stages of *R. microplus* embryogenesis. Protein metabolism depends strongly on the substantial expression and activity of carbohydrate metabolism enzymes and alpha-enolase is a key glycolytic enzyme [36].

The protein identified under spot 6 was disulfide isomerase (PDI), a 55 KDa multifunctional protein that participates in protein folding, assembly, and post-translational modification in the endoplasmic reticulum [37]. The fact that it was 18-fold-more expressed in SG than in OT was not surprising. This protein, together with other saliva enzymes which are putatively associated with antioxidant functions (i.e. glutathion-S-transferase, cytochrome c oxidase, oxidoreductase, NADH dehydrogenase), plays an important role in oxidative stress [38]. Tick-feeding, in fact, induces injuries and oxidative stress leading to production of reactive oxygen and nitrogen species (ROS and RNS) as part of the wound healing mechanism and anti-microbial defenses. Several lines of research have shown that many parasites including ticks are susceptible to ROS and RNS, as revealed by high expression of anti-oxidant enzymes in these parasites or improved survival of these parasites when anti-oxidant system of their hosts are impaired [38]. The production of antioxidant enzymes can be considered an evasion mechanism of the immune response used by tick for improving the feeding efficiency, and collaterally enhancing transmission of tick-borne diseases. It is also interesting to note that, given that the tissue destroying effects of oxidative stress products are non-selective, there is a possibility that tick saliva anti-oxidants are protective to host tissue [38].

## Identification of FLID

One of the goals of this study was to evaluate whether it is possible to detect proteins from the bacterial symbiont *M. mitochondrii* starting from protein extracts of ovaries and salivary glands of the hard tick *I. ricinus*. Due to the higher symbiont load in OT we expected this to be easier in this tissue, however none of the 2DE gel spots identified resulted to be of *M. mitochondrii*, neither from the OT, nor from the SG. We thus questioned whether this was a result of the low abundance of symbiont proteins or to some kind of technical issue. To investigate this, we performed an immunoproteomic approach based on the detection of a single *M. mitochondrii* protein (FliD) in a blotting experiment after narrow range pH gradient (linear pH 4–7) 2DE separation of OT and SG (see [materials and methods](#)). As shown in [Fig 5](#), a spot potentially corresponding to FliD, based on the chemical properties of the protein, was detected in OT

blotting, but not in SG blotting. When analyzing the corresponding region in the original 2DE gel, a cluster of spots was detected. Careful excision of these spots followed by LC/MS-MS allowed the identification of erp60, as well as of the expected *M. mitochondrii* protein FliD. This result indicates that symbiont proteins can indeed be identified using a proteomic approach, but that this is impaired by low protein quantities and by clustering with *I. ricinus* proteins. Specific approaches, such as the use of alternative narrow range pH gradients, immunoproteomic detection are thus needed to investigate the symbiosis between *I. ricinus* and *M. mitochondrii* from a proteomic point of view.

Here we presented a methodological framework that will pave the way for future studies on the proteomics of *I. ricinus*, with the goal of better understanding the biology of this vector and of its symbiont *M. mitochondrii*, but also to be the basis of immunoproteomic approaches that could prove useful for detecting novel antigenic proteins for innovative diagnostic and vaccination approaches.

## Supporting Information

### **S1 Table. PCR results on DNA extracted from ovarian tissue and salivary glands pools.**

GyrB and Cal gene copy numbers, GyrB Cal gene ratio, PCR positivity to *Borrelia burgdorferi*, *Anaplasma* spp., *Ehrlichia* spp. and *Rickettsia* spp. are indicated.

(DOCX)

### **S2 Table. Complete list of the 47 identified proteins, 20 from salivary glands and 27 from ovarian tissue.**

(DOCX)

### **S3 Table. List of proteins up and downregulated with additional information such as the primary sequence of peptides.**

(DOCX)

### **S4 Table. List of proteins identified under the immunoreactive spots with additional information such as the primary sequence of peptides.**

(DOCX)

### **S5 Table. Primary sequence of peptides found for identification of analyzed proteins.**

(DOCX)

## Acknowledgments

The authors thank Maddalena Cagnone and Valentina Serra for technical assistance, as well as Axelle Durand, Cindy Laurence and Claude Rispé (UMR BioEpAR) for their help during tick sampling. Gilles Capron (ONCFS; Office nationale de la Chasse et de la Faune Sauvage) and the ONF (Office National des Forêts) from the “Réserve biologique domaniale intégrale de la Sylve d’Argenson are acknowledged for allowing us to collect ticks on the roe deers captured in the Chizé forest.

## Author Contributions

Conceived and designed the experiments: DS AB RS PI. Performed the experiments: AC SE CB MDV MF SV. Analyzed the data: LDM MDV MF. Contributed reagents/materials/analysis tools: OP. Wrote the paper: MDV PI DS OP CB.

## References

1. Gubler DJ. Resurgent vector-borne diseases as a global health problem. *Emerg Infect Dis.* 1998; 4:442–450 PMID: [9716967](#)
2. Parola P, Raoult D. Ticks and tickborne bacterial diseases in humans: an emerging infectious threat. *Clin Infect Dis.* 2001; 32: 897–928 PMID: [11247714](#)
3. Socolovschi C, Mediannikov O, Raoult D, Parola P. The relationship between spotted fever group Rickettsiae and ixodid ticks. *Vet Res.* 2009; 40, 34 doi: [10.1051/vetres/2009017](#) PMID: [19358804](#)
4. Perronne C. Lyme and associated tick-borne diseases: global challenges in the context of a public health threat. *Front Cell Infect Microbiol.* 2014; 3: 74. doi: [10.3389/fcimb.2014.00074](#)
5. Rizzoli A, Silaghi C, Obiegala A, Rudolf I, Hubálek Z, Földvári G, et al. *Ixodes ricinus* and Its Transmitted Pathogens in Urban and Peri-Urban Areas in Europe: New Hazards and Relevance for Public Health *Front Public Health.* 2014; 2:251. doi: [10.3389/fpubh.2014.00251](#) PMID: [25520947](#)
6. Sasser D, Beninati T, Bandi C, Bouman EA, Sacchi L, Fabbi M, et al. ‘Candidatus Midichloria mitochondrii’, an endosymbiont of the tick *Ixodes ricinus* with a unique intramitochondrial lifestyle. *Int J Syst Evol Microbiol.* 2006; 56: 2535–2540 PMID: [17082386](#)
7. Lo N, Beninati T, Sasser D, Bouman EA, Santagati S, Gern L, et al. Widespread distribution and high prevalence of an alpha-proteobacterial symbiont in the tick *Ixodes ricinus*. *Environ Microbiol* 2006; 8: 1280–1287 PMID: [16817936](#)
8. Sasser D, Lo N, Bouman EA, Epis S, Mortarino M, Bandi C. “Candidatus Midichloria” endosymbionts bloom after the blood meal of the host, the hard tick *Ixodes ricinus*. *Appl Environ Microbiol.* 2008; 74: 6138–6140 doi: [10.1128/AEM.00248-08](#) PMID: [18689508](#)
9. Sacchi L, Bigliardi E, Corona S, Beninati T, Lo N, Franceschi A. A symbiont of the tick *Ixodes ricinus* invades and consumes mitochondria in a mode similar to that of the parasitic bacterium *Bdellovibrio bacteriovorus*. *Tissue Cell.* 2004; 36: 43–53 PMID: [14729452](#)
10. Mariconti M, Epis S, Gaibani P, Dalla Valle C, Sasser D, Tomao P, et al. Humans parasitized by the hard tick *Ixodes ricinus* are seropositive to *Midichloria mitochondrii*: is *Midichloria* a novel pathogen, or just a marker of tick bite? *Pathog Glob Health.* 2012; 106: 391–396. doi: [10.1179/2047773212Y.0000000050](#) PMID: [23265610](#)
11. Bazzocchi C, Mariconti M, Sasser D, Rinaldi L, Martin E, Cringoli G, et al. Molecular and serological evidence for the circulation of the tick symbiont *Midichloria* (Rickettsiales: Midichloriaceae) in different mammalian species. *Parasit Vectors.* 2013; 12: 350
12. Vu Hai V, Pages F, Boulanger N, Audebert S, Parola P, Almeras L. Immunoproteomic identification of antigenic salivary biomarkers detected by *Ixodes ricinus*-exposed rabbit sera. *Ticks Tick Borne Dis.* 2013; 4: 459–468. doi: [10.1016/j.ttbdis.2013.06.001](#) PMID: [23890749](#)
13. Schwarz A, Tenzer S, Hackenberg M, Erhart J, Gerhold-Ay A, Mazur J, et al. A systems level analysis reveals transcriptomic and proteomic complexity in *ixodes ricinus* midgut and salivary glands during early attachment and feeding. *Mol Cell Proteomics.* 2014; 13: 2725–2735. doi: [10.1074/mcp.M114.039289](#) PMID: [25048707](#)
14. Michelet L, Delannoy S, Devillers E, Umhang G, Aspan A, et al. High-throughput screening of tick-borne pathogens in Europe. *Front Cell Infect Microbiol.* 2014; 29: 4–103. doi: [10.3389/fcimb.2014.00103](#)
15. Pistone D, Pajoro M, Fabbi M, Vicari N, Marone P, Genchi C, et al. Lyme borreliosis, Po River Valley, Italy. *Emerg Infect Dis.* 2010; 16: 1289–1291 doi: [10.3201/eid1608.100152](#) PMID: [20678327](#)
16. Pesquera C, Portillo A, Palomar AM, Oteo JA. Investigation of tick-borne bacteria (*Rickettsia* spp., *Anaplasma* spp., *Ehrlichia* spp. and *Borrelia* spp.) in ticks collected from Andean tapirs, cattle and vegetation from a protected area in Ecuador. *Parasit Vectors.* 2015; 24: 46
17. Smith PK, Krohn RI, Hermanson GT, Mallia AK, Gartner FH, Provenzano MD, et al. Measurement of protein using bicinchoninic acid. *Anal. Biochem.* 1985; 150: 76–85 PMID: [3843705](#)
18. Candiano G, Bruschi M, Musante L, Santucci L, Ghiggeri GM, Carnemolla B, et al. Blue silver: a very sensitive colloidal Coomassie G-250 staining for proteome analysis. *Electrophoresis.* 2004; 25: 1327–1333 PMID: [15174055](#)
19. Giuliano S, Agresta AM, De Palma A, Viglio S, Mauri P, Fumagalli M, et al. Proteomic analysis of lymphoblastoid cells from Nasu-Hakola patients: a step forward in our understanding of this neurodegenerative disorder. *PLOS ONE.* 2014; 9: e110073. doi: [10.1371/journal.pone.0110073](#) PMID: [25470616](#)
20. Cotté V, Sabatier L, Schnell G, Carmi-Leroy A, Rousselle JC, Arsène-Ploetze F, et al. Differential expression of *Ixodes ricinus* salivary gland proteins in the presence of the *Borrelia burgdorferi* sensu lato complex. *J Proteomics.* 2014; 16: 29–43.



21. Mayer MP, Bukau B. Hsp70 chaperones: cellular functions and molecular mechanism Cell Mol Life Sci. 2005; pp. 670–684 PMID: [15770419](#)
22. Rinehart JP, Li A, Yocum GD, Robich RM, Hayward SA, Denlinger DJ. Up-regulation of heat shock proteins is essential for cold survival during insect diapause Proc Natl Acad Sci U S A. 2007; 104: 11130–11137 PMID: [17522254](#)
23. Busby AT, Ayllón N, Kocan KM, Blouin EF, de la Fuente G, Galindo RC, et al. Expression of heat shock proteins and subolesin affects stress responses, Anaplasma phagocytophilum infection and questing behaviour in the tick, Ixodes scapularis. Med Vet Entomol. 2012; 26: 92–102 doi: [10.1111/j.1365-2915.2011.00973.x](#) PMID: [21781141](#)
24. Sonenshine DE, Hynes WL. Molecular characterization and related aspects of the innate immune response in ticks. Front Biosci. 2008; 13: 7046–7063 PMID: [18508715](#)
25. Narasimhan S1, Montgomery RR, DePonte K, Tschudi C, Marcantonio N, Anderson JF, et al. Disruption of Ixodes scapularis anticoagulation by using RNA interference. Proc Natl Acad Sci U S A. 2004; 101: 1141–1146 PMID: [14745044](#)
26. Cameron LA, Giardini PA, Soo FS, Theriot JA. Secrets of actin-based motility revealed by a bacterial pathogen. Nat Rev Mol Cell Biol. 2000; 1: 110–119 PMID: [11253363](#)
27. Gouin E, Welch MD, Cossart P. Actin-based motility of intracellular pathogens. Curr Opin Microbiol. 2005; 8: 35–45.29. PMID: [15694855](#)
28. Stevens JM, Galyov EE, Stevens MP. Actin-dependent movement of bacterial pathogens. Nat Rev Microbiol. 2006; 4: 91–101 PMID: [16415925](#)
29. Horigane M, Ogihara K, Nakajima Y, Honda H, Taylor D. Identification and expression analysis of an actin gene from the soft tick, Ornithodoros moubata (Acari: Argasidae). Arch Insect Biochem Physiol. 2007; 64: 186–199. PMID: [17366597](#)
30. Schwan TG. Ticks and Borrelia: model systems for investigating pathogen-arthropod interactions. Infect Agents Dis. 1996; 5: 167–181 PMID: [8805079](#)
31. Dumler JS, Choi KS, Garcia-Garcia JC, Barat NS, Scorpio DG, Garyu JW, et al. Human granulocytic anaplasmosis and Anaplasma phagocytophilum. Emerg Infect Dis. 2005; 11: 1828–1834 PMID: [16485466](#)
32. Bhavsar AP, Guttman JA, Finlay BB. Manipulation of host-cell pathways by bacterial pathogens. Nature. 2007; 449: 827–834 PMID: [17943119](#)
33. Pancholi V. Multifunctional alpha-enolase: its role in diseases. Cell Mol Life Sci. 2001; 58: 902–920 PMID: [11497239](#)
34. Maritz-Olivier C, Stutzer C, Jongejan F, Neitz AW, Gaspar AR. Tick anti-hemostatics: targets for future vaccines and therapeutics Trends Parasitol. 2007; 23: 397–407 PMID: [17656153](#)
35. Moraes J, Galina A, Alvarenga P, Rezende G, Masuda A, Vaz IS Jr, Logullo C. Glucose metabolism during embryogenesis of the hard tick Boophilus microplus. Comp Biochem Physiol A Mol Integr Physiol. 2007; 146: 528–533 PMID: [16904922](#)
36. da Silva RM, Noce BD, Waltero CF, Costa EP, de Abreu LA, Githaka NW, et al. Non-classical gluconeogenesis-dependent glucose metabolism in Rhipicephalus microplus embryonic cell line BME26. Int J Mol Sci. 2015; 14: 1821–39.
37. Liao M, Boldbaatar D, Gong H, Huang P, Umemiya R, Harnoi T, et al. Functional analysis of protein disulfide isomerases in blood feeding, viability and oocyte development in Haemaphysalis longicornis ticks. Insect Biochem Mol Biol. 2008; 38: 285–95. doi: [10.1016/j.ibmb.2007.11.006](#) PMID: [18252243](#)
38. Radulović ŽM, Kim TK, Porter LM, Sze SH, Lewis L, Mulenga A. A 24–48 h fed Amblyomma americanum tick saliva immuno-proteome. BMC Genomics. 2014; 15:518. doi: [10.1186/1471-2164-15-518](#) PMID: [24962723](#)