



# Passive maternal exposure to environmental microbes selectively modulates the innate defences of chicken egg white by increasing some of its antibacterial activities.

Larbi Bedrani, Emmanuelle Helloin, Nicolas Guyot, Sophie Réhault-Godbert,  
Yves Y. Nys

## ► To cite this version:

Larbi Bedrani, Emmanuelle Helloin, Nicolas Guyot, Sophie Réhault-Godbert, Yves Y. Nys. Passive maternal exposure to environmental microbes selectively modulates the innate defences of chicken egg white by increasing some of its antibacterial activities.. BMC Microbiology, 2013, 13, 13 p. 10.1186/1471-2180-13-128 . hal-02643906

**HAL Id: hal-02643906**

**<https://hal.inrae.fr/hal-02643906>**

Submitted on 28 May 2020

**HAL** is a multi-disciplinary open access archive for the deposit and dissemination of scientific research documents, whether they are published or not. The documents may come from teaching and research institutions in France or abroad, or from public or private research centers.

L'archive ouverte pluridisciplinaire **HAL**, est destinée au dépôt et à la diffusion de documents scientifiques de niveau recherche, publiés ou non, émanant des établissements d'enseignement et de recherche français ou étrangers, des laboratoires publics ou privés.

RESEARCH ARTICLE

Open Access

# Passive maternal exposure to environmental microbes selectively modulates the innate defences of chicken egg white by increasing some of its antibacterial activities

Larbi Bedrani<sup>1</sup>, Emmanuelle Helloin<sup>2</sup>, Nicolas Guyot<sup>1</sup>, Sophie Réhault-Godbert<sup>1</sup> and Yves Nys<sup>1\*</sup>

## Abstract

**Background:** Egg defence against bacterial contamination relies on immunoglobulins (IgY) concentrated in the yolk and antimicrobial peptides/proteins predominantly localized in the egg white (EW). Hens contaminated with pathogenic microorganisms export specific IgYs to the egg (adaptative immunity). No evidence of such regulation has been reported for the antimicrobial peptides/proteins (innate immunity) which are preventively secreted by the hen oviduct and are active against a large range of microbes. We investigated whether the egg innate defences can be stimulated by the environmental microbial contamination by comparing the antimicrobial activity of EW of hens raised in three extreme breeding conditions: Germ-free (GF), Specific Pathogen Free (SPF) and Conventional (C) hens.

**Results:** The difference in the immunological status of GF, SPF and C hens was confirmed by the high stimulation of IL-1 $\beta$ , IL-8 and TLR4 genes in the intestine of C and SPF groups. EW from C and SPF groups demonstrated higher inhibitory effect against *Staphylococcus aureus* (13 to 18%) and against *Streptococcus uberis* (31 to 35%) as compared to GF but showed similar activity against *Salmonella* Enteritidis, *Salmonella* Gallinarum, *Escherichia coli* and *Listeria monocytogenes*. To further investigate these results, we explored putative changes amongst the three main mechanisms of egg antimicrobial defence: the sequestration of bacterial nutrients, the inactivation of exogenous proteases and the direct lytic action on microorganisms. Lysozyme activity, chymotrypsin-, trypsin- and papain-inhibiting potential of EW and the expression of numerous antimicrobial genes were not stimulated suggesting that these are not responsible for the change in anti-*S. aureus* and anti-*S. uberis* activity. Moreover, whereas the expression levels of IL-1 $\beta$ , IL-8 and TLR4 genes were modified by the breeding conditions in the intestine of C and SPF groups they were not modified in the magnum where egg white is formed.

**Conclusions:** Altogether, these data revealed that the degree of environmental microbial exposure of the hen moderately stimulated the egg innate defence, by reinforcing some specific antimicrobial activities to protect the embryo and to insure hygienic quality of table eggs.

**Keywords:** Chicken, Egg, Germ free, Innate immunity, Antimicrobial protein

\* Correspondence: Yves.Nys@tours.inra.fr

<sup>1</sup>UR83 Recherches Avicoles, Institut National de la Recherche Agronomique, Nouzilly, France

Full list of author information is available at the end of the article

## Background

Eggs contain a large variety of nutrients and are a source of balanced proteins with high nutritional value for humans. They are widely consumed throughout the world and are used in food processing for their technological properties. Their hygienic quality is of major concern especially when used as a raw nutrient. An egg is sterile when laid in non-pathological conditions but after being laid, it can be contaminated despite its efficient protective barriers [1,2]. The egg is protected physically by the eggshell and chemically by antibodies, known as IgYs, mainly concentrated in the egg yolk [3] and throughout the egg by numerous peptides and proteins possessing antimicrobial properties [4]. These molecules constitute an innate immunity and are secreted “preventively” by the hen ovary into the egg yolk to protect the embryo, and by the other oviduct segments into the other egg compartments (egg white, eggshell membranes and eggshell). Egg antimicrobial proteins and peptides operate via three main mechanisms: (i) sequestration of essential nutrients from bacteria by the chelation of minerals (iron) or from vitamins (biotin) by proteins such as ovotransferrin and avidin, respectively [5]; (ii) inactivation of exogenous proteases necessary for microbial metabolism and invasion of host tissues (egg antiproteases including cystatin, ovomucoid and ovoidinhibitor) [6]; (iii) direct lytic action on microorganisms by lysozyme or peptides belonging to the defensin family whose actions lead to the disruption of the bacterial cell wall [7]. The innate immunity of eggs is modulated by several parameters. Among these, genetic control has been demonstrated as the anti-*Staphylococcus aureus* and the anti-*Salmonella* Enteritidis activity of egg white have heritabilities (values reflecting the extent to which a phenotype is influenced by the genotype) of 0.16 and 0.13 respectively [8]. Hen physiology, in particular hen age [9] or immune-stimulatory treatments [10] have been reported to alter activities of some effectors of the egg innate chemical defence including lysozyme and anti-proteases. To our knowledge, there is no evidence demonstrating that antimicrobial peptide or protein concentrations and/or their activities might be modified by the exposure of the hen to pathogenic and/or non-pathogenic environmental microbes, as demonstrated for yolk antibodies [3,11]. This question is of interest since EU-directive 1999/74 became effective at the beginning of 2012. Conventional cage housing has been banned and only eggs issuing from alternative breeding systems are marketable. This major change in the hen breeding system has modified the hen microbial environment [12,13] and might increase egg shell contamination, as suggested by some comparisons between cage and non-cage breeding systems [14,15]. Therefore, we explored whether the microbial environment of the hen

influences innate immunity by increasing the oviduct secretion of antimicrobial proteins into the egg white, and its antibacterial activity. Any modification in egg antimicrobial molecules which are much less selective for specific pathogens compared to IgY and are potentially active against a wide range of microbes including bacteria, viruses or parasites [4] might positively impact on the hygienic quality of table eggs.

With this objective in mind, we studied three experimental models reflecting large differences in hen microbial environment and immunological status: Germ-free animals (GF), Specific Pathogen Free animals (SPF), and Conventional hens (C). Germ-free (GF) animals are reared in sterile conditions and show a wide range of defects in the development of their immune system and in antibody production, particularly intestine IgA. In GF mice, the normal immune function is also impaired at the tissue, cellular and molecular levels in the absence of gut microbiota [16,17]. SPF females are not subjected to any vaccination treatment and are bred in strictly controlled environments that are free of pathogens. In contrast, the conventional hens are vaccinated against highly virulent microorganisms and are reared in commercial facilities where environmental microbes are diverse and might even include pathogens.

In the present study, we have used these extreme breeding conditions to explore the impact of the hen microbial environment on the modulation of innate immunity in the egg, as reflected by egg white antibacterial activity.

## Results

### Maintaining germ-free, specific pathogen free and conventional hens

GF hens were bred in two isolators and strict conditions were applied to keep them in a sterile environment. The absence of bacteria in the isolators was checked twice a month throughout the experimental period using the referenced method (PFIE-NT-0061) on fresh faeces directly sampled from the cloaca and inoculated into two cultivation media: thioglycolate resazurine broth and heart infusion broth. Our strategy was partially successful as our analysis did not reveal the initial presence of any bacteria; however, a contamination by *Penicillium* was detected when the hens were 18 weeks of age.

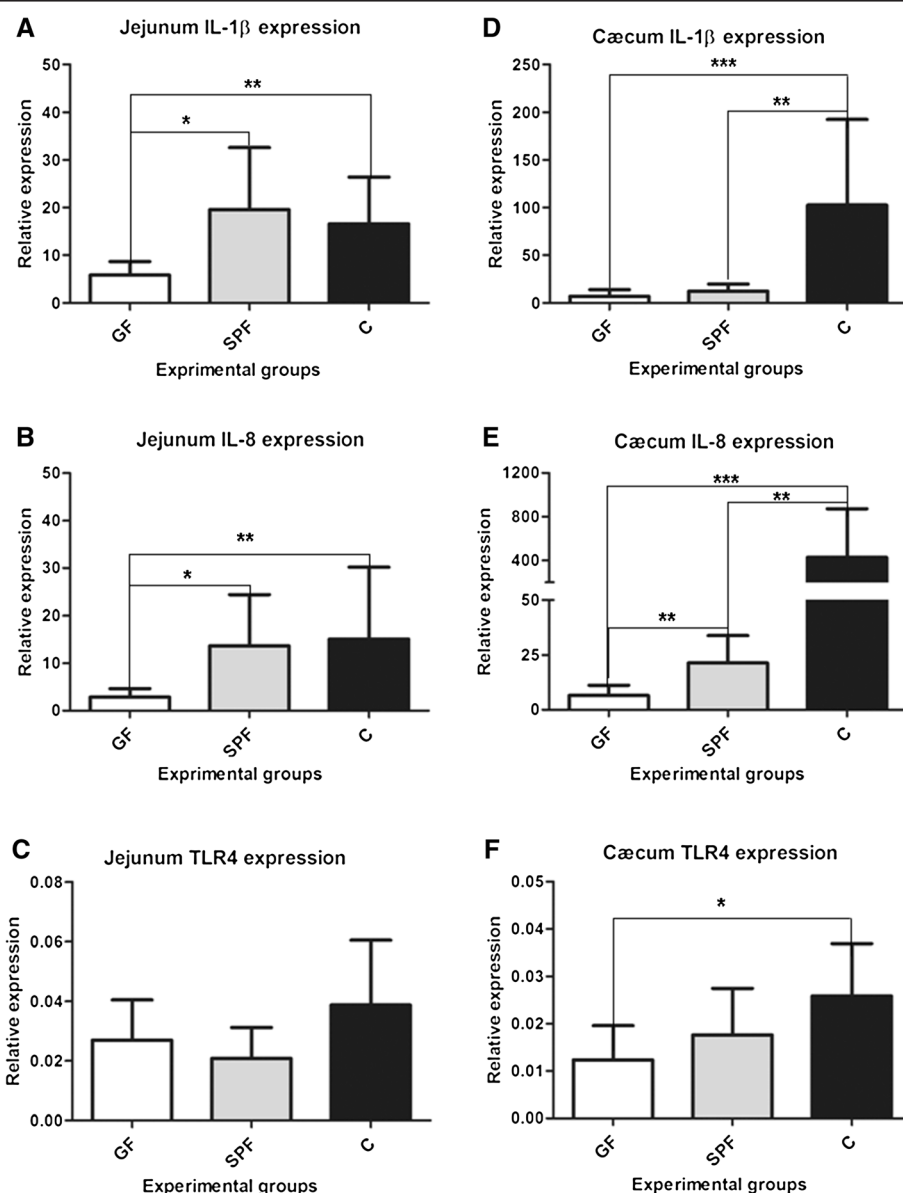
Specific pathogen free hens (SPF) were kept in strict hygienic conditions and were certified free of pathogens as determined by the control procedure of the experimental infectiology platform (PFIE-FE-0172). Our conventional hens were issued from the same line and flock than SPF hens but were reared with commercial laying hens at 16 weeks for 10 weeks before egg sampling. However, they have not been vaccinated against virulent microorganisms as carried out for commercial birds.

# Gene expression in jejunum and caecum by RT-qPCR

To better appreciate the immunological status of the three experimental groups, we first investigated the expression of interleukin-1 beta (IL-1 $\beta$ ), interleukin-8 (IL-8) and Toll-like receptor-4 (TLR4) genes in the jejunum and the caecum, as presented in Figure 1. In the jejunum, there was a 1.8- and 2.3-fold increase in IL-1 $\beta$  gene expression (Figure 1A), in C ( $p < 0.005$ ) and SPF groups ( $p < 0.05$ ), compared to GF. Similarly, the IL-8 gene (Figure 1B) expression was 3.7 and 4.2 times higher in C and SPF

groups as compared to GF group ( $p < 0.05$  and  $p < 0.005$ , respectively). However, no statistically significant difference was observed between C and SPF for both IL-1 $\beta$  and IL-8 in the jejunum. The TLR4 expression levels remained similar amongst the three experimental groups.

In the caecum (Figures 1D, E, F), IL-1 $\beta$  was overexpressed in the C group by more than 6- and 13-fold as compared to SPF ( $p < 0.01$ ) and GF ( $p < 0.005$ ), respectively. The mRNA levels between these latter groups were similar. The IL-8 gene expression was also higher in the C group



**Figure 1** Gene expression levels in the jejunum and the caecum of GF, SPF and C groups. In the jejunum, the gene expression levels of IL-1 $\beta$  and IL-8 (A and B respectively) were higher in C and SPF as compared to GF. In the caecum, IL-1 $\beta$  and IL-8 were overexpressed in C group as compared to SPF and GF. IL-8 and TLR4 mRNA level were also higher respectively in SPF and C groups compared to GF. ( $n = 8$ ; mean  $\pm$  standard deviation; \* $p < 0.05$ ; \*\* $p < 0.01$ ; \*\*\* $p < 0.001$ ). IL-1 $\beta$  and IL-8 data (A, B, D, E) were analysed using the Kruskal-Wallis test followed by the Mann-Whitney test; TLR4 data (C, F) were analysed using one-way ANOVA followed by the Bonferroni-Dunn test.

as compared to both SPF and GF groups. IL-8 expression was higher in C hens by more than 19-fold (versus SPF,  $p < 0.005$ ) and 64-fold (compared to GF,  $p < 0.001$ ). The SPF group demonstrated higher IL-8 mRNA levels (elevated more than 3-fold) compared with GF ( $p < 0.01$ ). Finally, the TLR4 gene expression was higher in conventional hens (C) (1.6 fold;  $p < 0.05$ ) as compared to GF hens, but not different from SPF hens.

### Egg white antibacterial activity

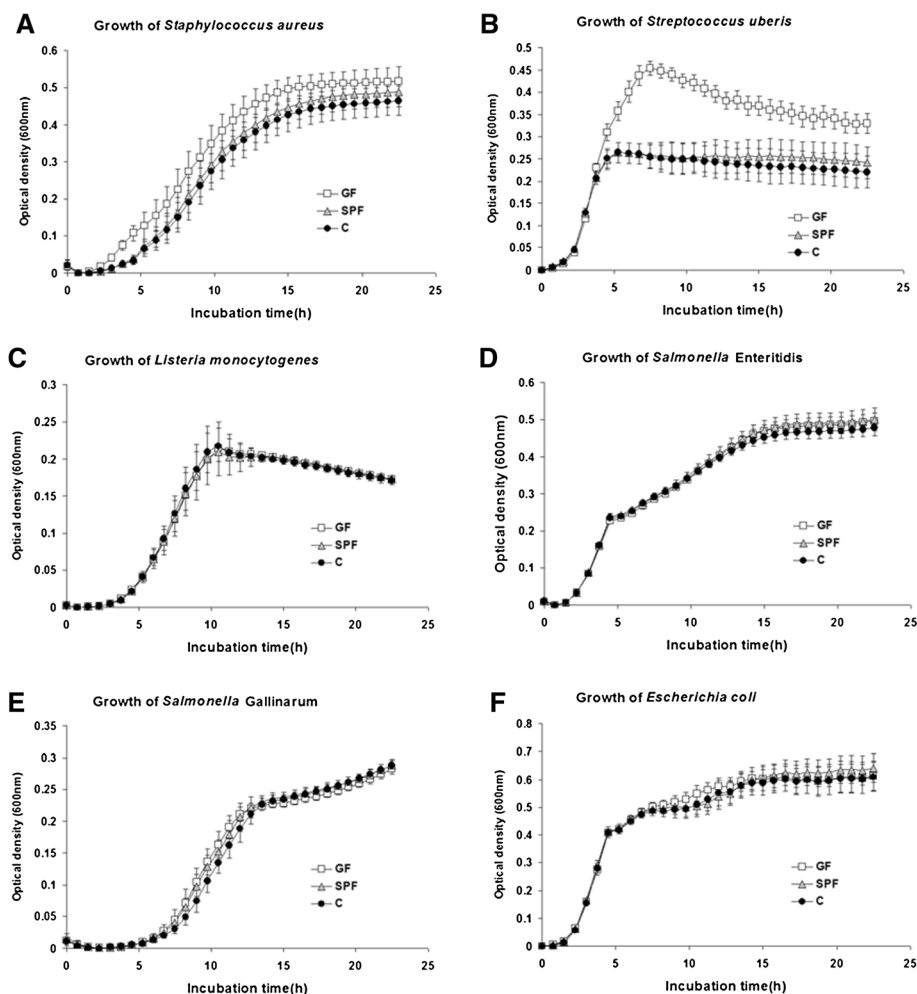
The growth curves obtained after cultivating *S. aureus*, *S. uberis*, *L. monocytogenes*, *S. Enteritidis*, *S. Gallinarum* and *E. coli* in the presence of diluted egg white from C, SPF and GF groups are shown in Figure 2. The mean values of the total growth (area under curve) are reported in Table 1. The growth of *S. aureus* (Figure 2A) was significantly lower by 17.6% ( $p < 0.001$ ) and 13.0%

( $p < 0.05$ ) respectively for the egg whites derived from C and SPF groups, as compared to the GF hens. Similarly, the growth of *S. uberis* (Figure 2B) was lower by 34.8% in the C group ( $p < 0.001$ ) and by 31.4% ( $p < 0.01$ ) in SPF as compared with GF hens. No difference was observed between C and SPF hens when measuring the growth of *S. aureus* and *S. uberis*. On the other hand the growth of *L. monocytogenes* (Figure 2C), *S. Enteritidis* (Figure 2d), *S. Gallinarum* (Figure 2E) and *E. coli* (Figure 2F) in presence of egg white were similar for the three experimental treatments (Table 1).

### Protein concentration and pH

Protein concentration and pH mean values for C, SPF and GF groups are shown in Table 2.

The pH of GF hen albumen was lower compared to those from C and SPF hens; the differences are 0.19 unit



**Figure 2 Growth of several bacterial strains in presence of GF, SPF and GF egg whites.** The growth inhibition of *S. aureus* (A), *S. uberis* (B) was significantly higher in C and SPF hens as compared to GF ( $p < 0.001$ ) while no differences were recorded among these three groups regarding the growth of *L. monocytogenes* (C), *S. Enteritidis* (D), *S. Gallinarum* (E) and *E. coli* (F). Germ free (GF), Specific Pathogen Free (SPF) and conventional (C) hens ( $n = 10$ , mean  $\pm$  standard deviation).

**Table 1 Growth of six bacterial species in egg white of GF, SPF and conventional hens**

Bacterial species	Germ free hens	Specific pathogen free hens	Conventional hens	P value
<i>Staphylococcus aureus</i> **	7.4 ± 0.7 a*	6.4 ± 0.7 b	6.1 ± 0.5 b	<0.001
<i>Streptococcus uberis</i>	7.3 ± 0.3 a	5.0 ± 0.6 b	4.7 ± 0.8 b	<0.001
<i>Listeria monocytogenes</i>	3.1 ± 0.1	3.0 ± 0.2	3.0 ± 0.1	0.91
<i>Salmonella Enteritidis</i>	7.5 ± 0.2	7.7 ± 0.3	7.4 ± 0.2	0.11
<i>Salmonella Gallinarum</i>	3.2 ± 0.2	3.3 ± 0.2	3.1 ± 0.1	0.18
<i>Escherichia coli</i>	10.6 ± 0.6	10.6 ± 0.6	10.4 ± 0.3	0.48

\*mean areas under the growth curves ± standard deviation, n = 10 Means with different letters are different (p < 0.05). Data were analysed using one-way ANOVA followed by the Bonferroni-Dunn test.

\*\**Staphylococcus aureus* D8 618.29, *Streptococcus uberis* 3029C MC, *Listeria monocytogenes* strain EGDe, *Salmonella Gallinarum* 229 K and *Salmonella enterica* Enteritidis ATCC 13076 were provided by INRA (Nouzilly) and Avian *Escherichia coli* CIRMBP-0096 was provided by the International Center of Microbial Resources dedicated to Pathogenic Bacteria (Nouzilly).

higher in C compared with GF groups (p < 0.001), and 0.13 higher in SPF egg white compared with GF eggs (p < 0.001). The mean albumen pH values were similar between C and SPF egg whites.

Total protein quantification of egg whites did not reveal any statistically significant difference between GF, C and SPF groups (P > 0.5).

#### Egg white lysozyme and protease inhibition activities

Lysozyme is a muramidase responsible for the cleavage of the bond between the N-acetyl-muramic acid and N-acetyl-glucosamine. These two molecules are found in the peptidoglycan of bacterial cell wall. Under our experimental conditions, lysozyme activities of the egg whites were similar for GF, SPF and C groups, as shown in Table 2.

Anti-proteases can impair bacterial invasion by inhibiting bacterial proteases which are major virulence factors. Anti-papain and anti-trypsin activities showed no differences between the three experimental groups of hens (Table 2). We detected, however, a trend for a higher anti-chymotrypsin activity in C and SPF groups as compared to GF groups (+10.3% and +10.0% for C and SPF, as compared to the GF group, respectively, which was not significant; p = 0.07).

#### Gene expression in the reproductive tract

We analysed in the three experimental groups the expression of genes encoding proteins whose function is to prevent bacterial growth either by direct lytic action, or by chelating nutrients or by inhibiting bacterial proteases (Table 3). We also analysed the expression of genes encoding some cytokines and TLR4 (the lipopolysaccharide receptor) to gain insight into some regulators of the immune response in the oviduct. Figure 3 shows the expression levels of lysozyme (A), avian beta defensin (AvBD) 10 (B), AvBD11 (C), AvBD12 (D), gallin (E), ovotransferrin (F), avidin (G), ovoinhibitor (H), cystatin (I), ovomucoid (J), IL-1β (K), IL-8 (L) and TLR4 (M) in the magnum tissue of the GF, SPF and C groups. The magnum is the part of the oviduct which synthesizes and secretes egg white proteins. The expression of the genes coding for the proteins having direct lytic action on bacteria, lysozyme (A), AvBD10 (B), AvBD11 (C), AvBD12 (D) and gallin (E) was similar in the magnum of the three experimental groups. Ovotransferrin (F), avidin (G) are respectively iron and biotin chelators present in the egg white. Their mRNA expression in the magnum of GF, SPF and C groups did not differ significantly. Similarly, the gene expression of ovoinhibitor (H), cystatin (I) and ovomucoid (J) which are antiproteases was similar among the three groups. Finally and in the

**Table 2 Protein concentration, pH, lysozyme and protease inhibiting activities of egg whites (GF, SPF and C hens)**

Measurements	Germ-free hens	Specific pathogen free hens	Conventional hens	P value
Protein concentration (mg/ml)	111 ± 14	119 ± 14	116 ± 6	0.24
pH	8.41 ± 0.10 a*	8.54 ± 0.11 b	8.60 ± 0.15 b	<0.001
Lysozyme activity (U/mg)	110200 ± 51220	96700 ± 29820	101700 ± 35120	0.74
Remaining protease inhibition activity (% of control)				
Anti-papain activity	45.4 ± 5.3	43.7 ± 5.5	41.8 ± 3.5	0.26
Anti-trypsin activity	46.4 ± 2.9	46.3 ± 4.6	45.9 ± 2.9	0.95
Anti-chymotrypsin activity	44.2 ± 4.6	48.6 ± 5.2	48.8 ± 4.9	0.07

\*Values are mean ± standard deviation, n = 10. Means with different letters are different (p < 0.05). The pH values were analysed using the Kruskal-Wallis test followed by the Mann-Whitney test; all other data were analysed using one-way ANOVA followed by the Bonferroni-Dunn test.



**Table 3 Functions, genes accession numbers and primers used for magnum and egg white proteins transcription studies**

Protein function	Genes	Primers	Accession number
Proteins with direct lytic action on bacteria	Lysozyme	F-GGGAACTGGGTGTGTGTGCA R-TCTTCTCGCGAGTTCACGCT	[GenBank: bFJ542564.1]
	AvBD 10	F-GCTCAGCAGACCCACTTTTC R-GTTGCTGGTACAAGGGCAAT	[GenBank: NM_001001609.1]
	AvBD 11	F-ACTGCATCCGTTCCAAAGTC R-TGTGGCTTTCTGCAATTCTG	[GenBank: NM_001001779.1]
	AvBD 12	F-GGGGATTGTCCGAGTGGGG R-TGCTGGAGGTGCTGCTGCTC	[GenBank: NM_001001607.2]
	Gallin	F-CTCCAGCCTCGCTCACAC R-TTGAGAGGAGGGGATGACAC	[GenBank: FN550409.1]
Chelating proteins	Ovotransferrin	F-GACTTGCAGGGCAAGAACTC R-GCTGGCAGAGAAAACTTGG	[GenBank: NM_205304.1]
	Avidin	F-CTGCATGGGACACAAAACAC R-TTAACACTTGACCGCAGCAG	[GenBank: NM_205320.1]
Protease inhibiting proteins	Cystatin	F-ACAACCTGCCCCAAGTCATC R-GGCAGCGATACAATCCATCT	[GenBank: NM_205500.2]
	Ovoinhibitor	F-TAAGGATGGCAGGACTTTGG R-GAGTTTGCCACCAGTGGTTT	[GenBank: NM_001030612.1]
	Ovomucoid	F-TGCAGTCGTGGAAGCAACGG R-GCTGAGCTCCCCAGAGTGCGA	[GenBank: FJ227543.1]
Cytokines	Interleukin 1	F-AGTGGCACTGGGCATCAAGG R-TGTCGATGTCCCGCATGACG	[GenBank: HQ329098.1]
	Interleukin 8	F-CTGCGGTGCCAGTGCATTAG R-CCATCCTTTAGAGTAGCTAT	[GenBank: HM179639.1]
	TLR4	F- TTCAAGGTGCCACATCCAT R- TAGGTCAGACAGAGAGGATA	[GenBank: AY064697]
	TBP	F-GCGTTTTGCTGCTGTTATTATGAG R-TCCTTGCTGCCAGTCTGGAC	[GenBank: NM_205103.1]

same way, the expression of genes coding for IL-1 $\beta$ , IL-8 and TLR4 showed no difference between the three experimental groups.

## Discussion

The primary protection of the egg after being laid relies firstly on a physical defence (the eggshell and the eggshell membranes) and secondly on chemical defences mainly present in the egg white, but also in other compartments. IgY, IgM and IgA [11] participate with numerous major proteins [18] and newly identified minor proteins and peptides [4] in the innate defences of the egg. While IgY concentration have been shown to vary in egg yolk depending of the nature and degree of antigen exposure of hen [19], no evidence in the literature explored whether the antimicrobial peptides/proteins of the egg are modulated by the microbial environment of

the hen. The present study demonstrates the regulation of some egg white antimicrobial activities by microbial environment of the hen.

This investigation used an experimental design based on the comparison of three extreme conditions of rearing laying hens: germ-free (GF), specific pathogen-free (SPF) and conventional (C) conditions. GF hens are characterized by the absence of microbiota at the intestinal level. This influences their metabolism and intestinal morphological parameters [20]. SPF hens are raised in strictly hygienic conditions and are not vaccinated. Due to the absence of any interactions with other pathogenic microorganisms, the SPF model is frequently used to explore immunological responses to pathogenic or vaccine antigens [21,22]. In contrast, C laying hens are bred under commercial conditions and might occasionally be exposed to pathogens. These contrasting breeding

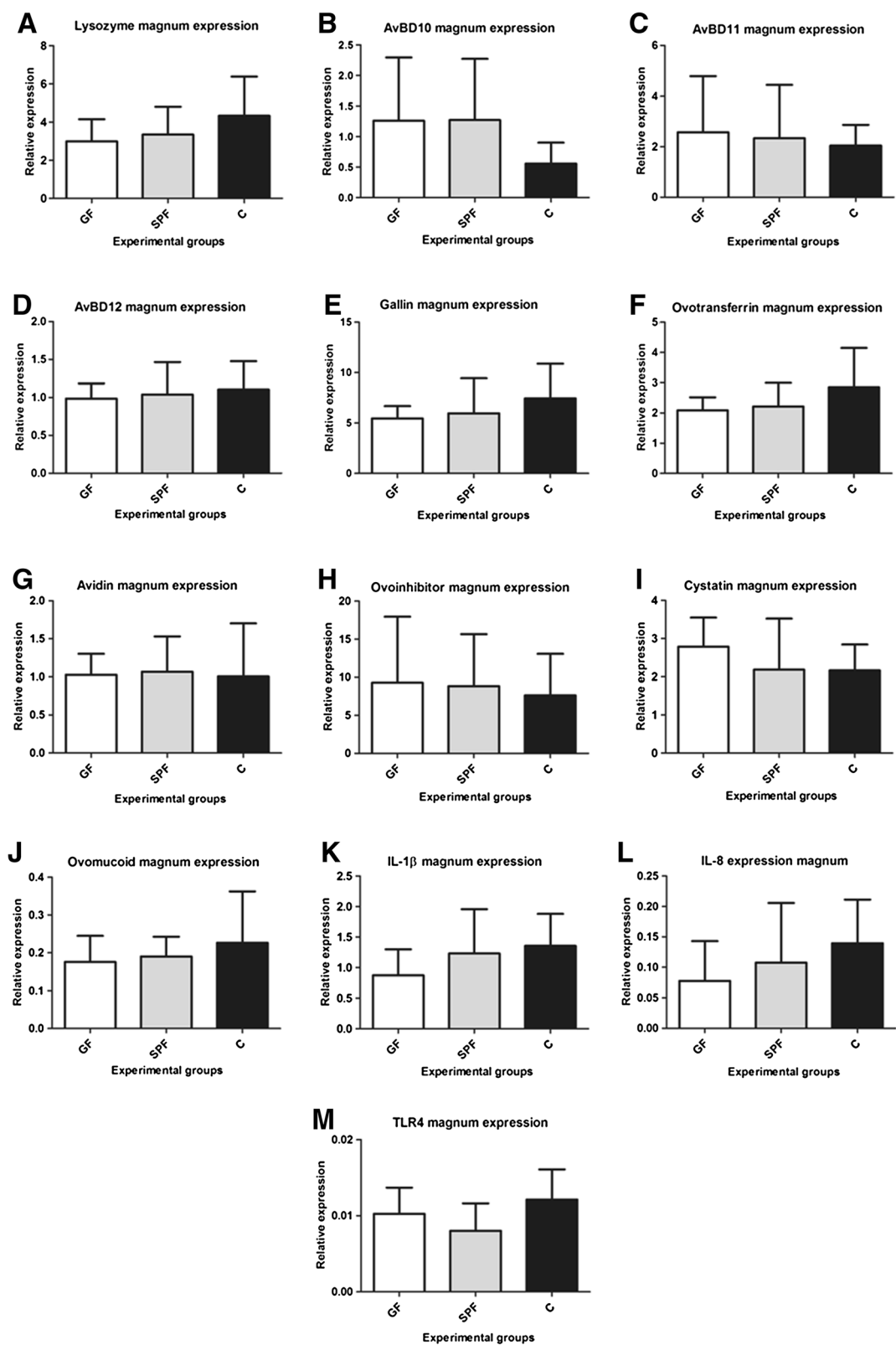


Figure 3 (See legend on next page.)



(See figure on previous page.)

**Figure 3 Genes expression levels in the magnum of GF, SPF and C groups.** Gene expression levels of lysozyme (A), AvBD 10 (B), AvBD 11 (C), AvBD 12 (D), gallin (E), ovotransferrin (F), avidin (G), ovoinhibitor (H), cystatin (I), ovomucoid (J), IL1- $\beta$  (K), IL8 (L) and TLR4 (M) in the magnum as assessed by RT-qPCR showed no difference among the three experimental groups GF, SPF and C (n = 8; mean  $\pm$  standard deviation, \* p < 0.05). Data in A, D, G, H, I, K, L and M were analysed using one-way ANOVA followed by the Bonferroni-Dunn test; data in B, C, E, F and J were analysed using the Kruskal-Wallis test followed by the Mann-Whitney test.

conditions provide extremely wide qualitative and quantitative variations in terms of bacterial populations in contact with the hens: the absence or presence of surrounding microbes and gut microbiota, for the GF or C groups respectively, and an intermediate group, the SPF hens, hosting a controlled microbiota in a pathogen-free environment. The maintenance of GF hens until they are sexually mature (4–5 months) and beyond requires efficient isolators, sterilized food and water, and qualified animal handlers. These constraints could partly explain why such an animal model has never been used before. In our attempt, the non-contamination of GF hens was not successfully achieved. An agent, *Penicilium*, was detected at month four, in two independent isolators, but more importantly, in spite of this fungal contamination, the hens remained free of bacteria relevant to our initial objective.

The GF group definitively showed different immunological statuses compared to the C and SPF groups, as reflected by higher expressions of IL-1 $\beta$ , IL-8 and TLR4 genes in the jejunum and caecum of these groups, compared to the GF group. IL-1 $\beta$  and IL-8 are two pro-inflammatory cytokines which are often used as markers of inflammation [23]. TLR4 is a host cell membrane receptor that detects lipopolysaccharide from Gram-negative bacteria and elicits innate immune response following bacterial infection. The difference in expression levels of IL-1 $\beta$ , IL-8 among the three groups was larger in the caecum (2- to 64-fold) than in the jejunum (2- to 4-fold) in the SPF and C groups as compared to the GF group. Such expected differences are probably due to the bacterial load, which is much higher in the caecum than in the jejunum [24]. In contrast, no differences in IL-1 $\beta$ , IL-8 and TLR4 gene expression were observed in the oviduct (magnum) between the experimental groups. Under normal non-pathogenic conditions, the magnum and the other segments of the hen oviduct (infundibulum, isthmus and uterus) constitute an aseptic environment in which the egg is formed in a 24 hour period [2]. These aseptic conditions are probably responsible for the absence of pro-inflammatory gene induction. Altogether, these observations suggest that the presence or absence of microflora and associated stimuli, at the intestinal or oviduct levels respectively, directly influences the local inflammatory state and the tissue expression of IL-1 $\beta$ , IL-8 and TLR4 genes.

The egg white is the largest compartment of the egg in terms of variety and concentration of antimicrobial

proteins. Among the major egg white antimicrobial proteins are ovotransferrin and lysozyme, which are active against Gram-negative and Gram-positive bacteria [4,25]. Apart from these major egg white compounds, a number of minor molecules with potent antimicrobial activities have recently been identified and further characterized. Of these, we characterized the antibacterial activities of two peptides of the beta-defensin family, namely gallin and the avian beta-defensin [26,27]. While gallin is active against *E. coli*, AvBD11 possesses a broad spectrum of antibacterial activities against both Gram-positive and Gram-negative bacteria. The ability of the hen to modulate these compounds in response to microbial environments has not been explored. Egg whites of the C and SPF groups had greater inhibitory activities on the growth of *S. aureus* and *S. uberis* (Figure 2A, B, P < 0.01) than those of the GF hens. In contrast, anti-*Salmonella* (*S. Enteritidis* and *S. Gallinarum*), anti-*E. coli* and anti-*L. monocytogenes* activities were similar in the egg whites of all three experimental groups. Our results demonstrated that the breeding conditions of hens have an impact on some of the antibacterial properties of their eggs, according to the degree of bacterial contamination of their environment. However, the response seemed specific to certain bacterial strains, suggesting that it might result from change in some antimicrobial egg molecules with a particular spectrum of activity, predominantly toward Gram-positive bacteria in our study. In order to give some insight into the putative mechanisms at the origin of the increased egg white antibacterial activity against *S. aureus* and *S. uberis* observed in SPF and C groups, we further analysed the level and/or activity of a panel of proteins representative of the main modes of action of egg antimicrobials (chelating, antiprotease and lytic effects). That was carried out by quantifying egg white activities or magnum gene expression of proteins representative of this diversity of antibacterial actions.

The main bacteriolytic molecule of the egg white is the lysozyme. This well-studied cationic protein is an enzyme catalysing the cleavage of peptidoglycan, a major compound of Gram positive bacterial cell walls. No variation between GF, SPF and C was observed for the lysozyme-mediated lytic activity of egg whites. This is in agreement with the lysozyme amounts, which appeared to be constant within all experimental groups, as assessed by western blot (data not shown) and with previous findings

showing the genetic stability of lysozyme concentration in the egg white [8]. In the opposite, hen age and acute administration of different immunostimulatory substances to hens modulate its activity [9,10]. However, our results were coherent with unmodified anti-*L. monocytogenes* activity. Egg white exerts a potent bactericidal activity against *L. monocytogenes* and the main egg component possessing anti-*Listeria* activities is the lysozyme. In contrast, *L. monocytogenes*, *S. aureus* and *S. uberis* seemed to be less sensitive to the egg white antimicrobial activities and grew in less diluted egg white. A number of *S. aureus* strains are known to develop resistance to lysozyme, whereas the activity of egg white lysozyme on *S. uberis* strains requires further study. The fact that no variation between GF, SPF and C was observed for the lysozyme-mediated lytic activity of egg whites supports the hypothesis that enhanced anti-*S. aureus* and anti-*S. uberis* activities in SPF and C egg white are not related to lysozyme, but most probably to additional compound(s). Egg white contains numerous bactericidal molecules including the avian defensins. These cationic peptides can disrupt the bacterial membrane, resulting in the cell lysis [7,28]. Thus, gallin and avian beta-defensins (AvBDs) 10, 11 and 12 which have been detected in the egg white by proteomic analysis [29] and/or in the magnum at transcriptional level [30] are alternative candidates to explain a change in antimicrobial activities. The quantification of these peptides was not possible because neither specific antibodies nor quantitative ELISA kits are available. Variation at the transcriptional level was therefore analysed by RT-qPCR in the magnum as a potential marker for relative protein synthesis between experimental groups. Previous studies showed that hens intravenously injected with lipopolysaccharide showed a transitory increased expression of AvBD10, AvBD11 and AvBD12 in the vagina [30,31]. In our steady-state experimental conditions, even if C and SPF hens were more challenged immunologically than GF hens, their magnum showed no stimulation of AvBD10, AvBD11, AvBD12 and gallin expression, suggesting that these molecules are not responsible for the increased antimicrobial activity observed in the egg white. Therefore, the higher anti-*S. aureus* and anti-*S. uberis* activities in the egg white of C hens did not appear to rely on AvBD10, AvBD11, AvBD12 and gallin.

Egg white contains large amounts of chelating molecules with antimicrobial activities, the most representative being ovotransferrin and avidin. Ovotransferrin was quantified both at the protein (western blot, data not shown) and transcriptional levels, while avidin was assessed only at the transcriptional level. No modifications in any of the three hen groups were revealed for these molecules. It is believed that the most efficient antimicrobial molecule against Gram-negative bacteria

*E. coli* and *S. Enteritidis* in the egg is ovotransferrin via its iron depriving mechanism [25,32]. *S. Enteritidis* is of major concern in public health as it is considered as the first foodborne disease agent in eggs and egg products [2]. This bacterium is capable of invading the intact egg when laid and, via different mechanisms, of withstanding the antibacterial molecules as well as the harsh pH conditions in the egg white during its storage [33]. The absence of variation in *S. Enteritidis* growth in any of the three conditions was consistent with our observations showing that ovotransferrin was not modified, either at protein or transcriptional levels.

Egg white antiproteases might play a role in egg innate immunity by exhibiting antimicrobial activities. Cystatin is a potent antimicrobial, active against a variety of bacteria including *Escherichia coli* and *S. aureus* [34]. Two other egg antiproteases, ovomucoid and ovoinhibitor, are known to inhibit bacterial peptidases [35,36] in spite of limited data regarding their antimicrobial properties. In particular, their effect on *S. aureus* is yet unknown. Likewise, there is no data in the literature demonstrating anti-*S. uberis* properties for ovomucoid, ovoinhibitor and cystatin. In our study, the analysis of egg white antiprotease activities and magnum gene expression of these molecules was of interest as staphylococci and streptococci are bacteria known to secrete extracellular peptidases that presumably play some role in virulence. In particular, *S. aureus* produces and releases to the extracellular milieu several enzymes belonging to distinct classes of proteases, such as serine- (Protease V8 or SspA), cysteine- (Staphopains A and B, also known as ScpA and SspB) and metallo- (Aureolysin Aur) proteases [37]. *S. uberis* produces extracellular proteases that are involved in the regulation of biofilm formation [38]. Our results showed that global anti-trypsin, anti-chymotrypsin and anti-papain-like protease activities were not influenced by the microbial environment of hens. Moreover, gene expression analyses of ovoinhibitor, cystatin and ovomucoid in the magnum did not show any differences among the three experimental groups. These observations suggest that increased egg white activities against *S. aureus* and *S. uberis* do not rely on these egg antiproteases.

The egg white pH affects global egg white antimicrobial activity. High pH values are bactericidal for *S. aureus* [39] and are correlated with anti-*S. Enteritidis* activity [40]. Egg white pH was slightly higher in C (+0.19) and SPF (+0.13) groups as compared to GF (pH = 8.41). However, for this magnitude of changes, there was no correlation between pH and anti-*S. aureus* or anti-*S. uberis* activities (correlation coefficients were respectively -0.16 and -0.50;  $p > 0.1$ ) so this parameter is unlikely to explain the bacterial growth inhibition.

Our observation that only two out of the six bacteria studied responded to the treatment, suggests that the

effect results from some specific egg molecules. However, our attempt to identify the molecular origin of the change in the egg white antimicrobial activities observed for *S. aureus* and *S. uberis* was not fruitful. It strongly suggests that additional egg components, not investigated in the present study, are involved in this regulation. The sequencing of the hen's genome and the development of proteomic [29,41,42] and transcriptomic [43] approaches reveal hundreds of minor peptides and proteins expressing a large range of biological functions including protection against diverse pathogens (bacteria, viruses, fungi) [4] in the different egg compartments. An alternative explanation for the difficulty in identifying the minor egg molecules responsible for the increased antibacterial effect towards *S. aureus* and *S. uberis* is that we explored the gene expression of candidate proteins, and not the egg protein or peptide levels or activities in the eggs. However, by using such extreme experimental situations (GF, SPF, C), this strategy should be valid and this was confirmed by the dramatic changes observed for interleukins at the intestinal level. It is obvious, however, that numerous alternative candidates amongst the newly identified molecules may be at the origin of the observed changes, including histone-like proteins or lipopolysaccharide-binding proteins [4].

## Conclusions

The present study shows evidence that the microbial environment of the hen modulates some of the antibacterial activities of the egg white, independently of the pH. The change in the antibacterial activity remains however of moderate magnitude and concerns only a limited number of bacteria (2 out of 6). In particular, the microbial contamination of the hen environment changed anti-*S. aureus* and anti-*S. uberis* egg white activities, whereas anti-*S. Enteritidis* egg white activity was not affected. The restricted bacterial spectra affected by the bacterial environment suggested a change in some of the minor egg protein or peptides for which it would be useful to develop quantitative methods for measuring their level and antibacterial activity. The absence of anti-*Salmonella* modulation by the hen in response to microbial milieu underlines the importance of keeping the environment free of *Salmonella* to reduce egg contamination risks in the alternative breeding systems emerging in Europe.

## Methods

### Experimental design

#### Ethics statement

All experiments, including all animal-handling protocols, were carried out in accordance with the European Communities Council Directives of 24 November 1986 (86/609/EEC) concerning the practice for the care and

Use of Animals for Scientific purposes and the French ministerial decree 87848 of 19 October 1987 (revised on 31 May 2001) on Animal experimentation under the supervision of authorized scientists (authorization # 6563, delivered by the DDPP, direction départementale de la protection des populations, d'Indre et Loire). The experimental infectiology platform (PFIE, B37-176-3, INRA, Nouzilly; France) where the birds were kept has the agreement for rearing birds and for the euthanasia of experimental animals (decree N° SA0900850 of 25<sup>th</sup> August 2009, delivered by the Préfecture d'Indre et Loire following the inspection of the Department Direction of Veterinary Services (DDPP, direction départementale de la protection des populations). The sampled eggs were non embryonic (table egg).

### Animals

Thirty eight PA12 Leghorn hens were bred in the PFIE. They were divided into three experimental groups: A) a Germ-Free (GF) group (n = 8) where chicks were hatched and raised in a sterile environment (two pressurised isolators) until sexual maturity and initiation of egg production. The hens were fed X-ray sterilized diet (SDS Dietex, Argenteuil, France) and sterilized water for the entire duration of the trial (more than 6 months). B) a Specific Pathogen Free (SPF) group (n = 12) corresponding to hens housed in individual cages in a pressured chamber and bred/maintained in strictly hygienic conditions to prevent any contact with known pathogenic microorganisms. C) a Conventional (C) group (n = 18) that was kept under conventional breeding conditions but in individual cages. C hens were initially PA12 SPF females which were transferred at 16 weeks of age to conventional breeding facilities hosting commercial laying ISA-Brown hens in their production period. C hens however remained unvaccinated until the end of the trial.

The lightening program consisted of 16 hours of light and 8 hours of obscurity. Food and water were provided *ad libitum*.

### Albumen processing

A total of 80 eggs were collected per experimental group of hens (20 to 30 weeks of age). Eggs were checked visually to remove cracked eggs and then stored at 4°C for 48 hours before sampling. After this period, the eggs were flamed using absolute ethanol and broken under sterile conditions. The albumens were separated from yolks, homogenized using an ultraturax device (T 18 basic ULTRA-TURRAX®, IKA-Werke, Staufen, Germany) aliquoted into microtubes and stored at -20°C until use. Ten pools of eight egg whites were constituted per treatment and used to carry out the antibacterial assays and other analysis.

### Antimicrobial activity assay

A turbidimetric approach was used to study the antimicrobial activity of the egg whites against several pathogenic bacterial strains. The automated turbidometer Bioscreen C Reader (Bioscreen C<sup>®</sup>, Thermo Fisher Scientific, Saint-Herblain, France) has been used in various studies to evaluate the impact of antibacterial molecules on growth parameters of bacteria and has shown a good accordance with estimates obtained by plate count [44,45]. *Staphylococcus aureus* D8 618.29 and *Streptococcus uberis* 3029C MC were kindly provided by Pascal Rainard (INRA, UMR1282, Nouzilly, France). *Listeria monocytogenes* strain EGDe, *Salmonella* Gallinarum 229 K and *Salmonella enterica* Enteritidis ATCC 13076 were kindly provided by Philippe Velge (INRA, UMR1282, Nouzilly, France). Avian *Escherichia coli* CIRMBP-0096 was provided by the International Center of Microbial Resources dedicated to Pathogenic Bacteria (CIRM-BP, INRA Tours, France). *Listeria monocytogenes* and *Streptococcus uberis* were grown in tryptic soy broth and brain heart infusion, respectively. All the remaining bacteria were cultured in Mueller-Hinton broth. The bacterial strains (frozen in 25% glycerol) were cultured overnight at 37°C prior to the bacterial assay. The following day, an aliquot of the overnight culture was then inoculated in fresh broth and cultured at 37°C with agitation (320 rpm) until reaching the optical density (OD) corresponding to mid-exponential growth phase previously defined according to whole growth curves determination studies (data not shown). An aliquot of 50 µL of diluted albumen sample (in 50 mM Tris-HCl, pH 7.4) were deposited in triplicate in sterile 100-well honeycomb microplates and mixed with 50 µL of a bacterial suspension ( $2 \times 10^6$  CFU/mL in 2X broth) obtained by diluting the mid-exponential growth phase culture. The final bacterial concentration was  $10^6$  CFU/ml per well. Final egg white dilutions were 1/120 for *L. monocytogenes*, 3/16 for *S. uberis* and 3/8 for the remaining strains. Culture media and egg-white samples used in the study were verified for the absence of bacterial contamination. The plates were then incubated at 37°C for 22.5 hours in an automated OD recorder (Bioscreen C<sup>®</sup>, Thermo Fisher Scientific, Saint-Herblain, France).

The OD values were measured for each well at 600 nm every 45 min after 10 seconds of high speed shaking, and means were calculated from the three replicates. The quantification of antimicrobial activities for each albumen sample was based on the calculation of area under the growth curves as determined by the following formula:  $\text{area} = t * ((\text{OD}_1/2 + \text{OD}_{\text{final}}/2) + \text{sum}(\text{OD}_2; \text{OD}_3 \dots \text{OD}_{\text{final}-1}))$ , where  $t$  is the time interval between two measurements,  $\text{OD}_1$  the first measured OD and  $\text{OD}_{\text{final}}$  the last measured OD. We considered the area under the growth curves to facilitate the comparison

of the impact of egg whites on bacterial growth between the different groups tested (GF, SPF and C). To guaranty that this value really reflects the growth parameters, we choose to limit its calculation in the OD interval where the reliability of the relationship between OD and the numbers of CFU/ml has been highlighted by preliminary studies.

### pH measurement and protein quantification

The pH of the albumen was measured using a laboratory pH meter (pH meter BASICS 20+, Crison, France) after homogenisation of the egg white pools. Total protein concentration was quantified using the Coo Protein Assay Reagent (Interchim, Montluçon, France) on 5 µL of a 1/200 dilution of egg white, according to the manufacturer's recommendation.

### Antiprotease activities of egg white

The protease-inhibition activities of egg white were assessed against trypsin, chymotrypsin and papain. The microassays were based on the use of chromogenic peptidic substrates covalently coupled at their carboxy-terminal extremity to para-nitroanilide (pNA). T-Glu-Phe-Arg-pNA, Succinyl-Ala-Ala-Pro-Phe-pNA and pGlu-Phe-Leu-pNA (Sigma Aldrich, Saint-Quentin Fallavier, France) were used to study the trypsin, chymotrypsin and papain inhibitory activities of the egg white, respectively. The assays were performed in 96-well plates in 200 µL final volume per well, with 50 mM Tris-HCl 50 mM NaCl; pH 7.4 as a buffer for both trypsin and chymotrypsin assays. The papain assays utilized 0.1 M Bis Tris, 1 mM EDTA, 2 mM 1,4-dithio-DL-threitol, pH 6. Twenty µL of 1/64000, 1/200 and 1/20 egg white dilutions were incubated 1 h at 30°C with 130 µL of trypsin, chymotrypsin and papain, respectively. Then 50 µL of the appropriate peptidic substrate (2 mM) were added. Final enzyme concentrations were 0.8 nM for both trypsin and chymotrypsin and 0.4 µM for papain. The quantities of egg white used in each protease assay were chosen in order to obtain 50% to 60% inhibition as compared to a control containing only the substrate and the enzyme. The hydrolysis of each substrate was recorded during 30 min by continuous monitoring of the absorbance of pNA at 410 nm.

### Lysozyme activity assay

Lysozyme activity of the egg whites was determined using the lysoplate method [46] modified for 96-well plates [5]. Briefly, lyophilised *Micrococcus lysodeikticus* (Sigma Aldrich, Saint-Quentin Fallavier, France) was suspended in PBS (0.5 mg/ml) and kept at a temperature of 45–50°C. Fifteen µL of the albumen dilution (1/200 in 50 mM Tris-HCl, pH 7.5) was mixed with 150 µL of the bacterial suspension in each well of a 96 well plate maintained on ice. The absorbance at 420 nm of each sample was measured at 25°C over 6 minutes using a



microplate reader (Infinite®, Tecan, Lyon, France). Lysozyme activity of each albumen sample was determined by recording the absorbance decrease in *Micrococcus lysodeikticus* culture. The log absorbance values recorded within 3 min for each egg white sample showed linear curves whose slopes were reported to each egg white protein concentration in the assay. The results are expressed as Unit/mg of egg white protein where one Unit corresponds to a decrease of OD by 0.01 per minute at 450 nm.

## Tissues sampling and gene expression analysis

### Tissue sampling

Tissue sampling was performed on eight hens of each experimental group. A lethal intravenous injection of pentobarbital sodium (CEVA santé animale, France) was used for the sacrifice of the animals (Authorization # 7323). Samples (n = 8) of the mucosal layers of magnum, jejunum and caecum were collected in cryotubes, snap frozen and stored at -80°C until use.

### Gene expression analysis

Total mRNA from tissues was extracted using RNA Now (Biogentec, Seabrook, TX) according to the manufacturer's recommendations. RNA concentrations were determined by measuring the absorbance at 260 nm using a spectrophotometer (Nanodrop® ND1000, Labtech, Paris, France). RNA integrity was verified by electrophoresis in 1% agarose gel using ethidium bromide. Reverse-transcription was performed using RNase H-MMLV reverse transcriptase (Superscript II, Invitrogen, Cergy Pontoise, France) and random hexamers (Amersham, Orsay, France). The resulting cDNA was amplified by real-time RT-PCR (RT-qPCR) using SYBR Green I (ROCHE SAS, Boulogne-Billancourt, France). Primers of the genes are listed in Table 3.

### Statistical analysis

Data are presented as mean ± standard deviation. Statistical analyses were carried out using Statview version 5.0 (SAS Institute, Cary, North Carolina). The homogeneity of the variances were checked using Bartlett test for equal variances. When the latter was no significant (p > 0.05), data were analysed using one way ANOVA followed by Bonferroni-Dunn test for the pair-wise comparison. When the variances were different (Bartlett test, p < 0.05) data were analysed using the Kruskal-Wallis test followed by a Mann Whitney test for the pair-wise comparisons.

### Competing interests

The authors declare that they have no competing interests.

### Authors' contributions

LB, EH contributed to the strategy, the experimental design, and planning of the study. LB carried out the experiments and analyses, interpreted data and wrote the first draft of the paper. EH, NG, SR contributed to the interpretation of data and to the writing of the paper. YN conceived the

research program focused on regulation of egg innate immunity. He was involved in the strategy, the experimental design, data interpretation and was fully involved in the writing of the paper. All authors have read and approved the final manuscript.

### Acknowledgements

We thank Region Centre for its financial support of the first author. This work was supported by the National French Agency (OVO-mining, ANR-09-BLAN-0136-01) and the European Commission ("Reducing Egg Susceptibility to Contamination in Avian Production in Europe", FOOD-CT-2006-036018). The authors are grateful to Edouard Guitton, Patrice Cousin, Bruno Campone (Plate-Forme d'Infectiologie Expérimentale, F-37380 Nouzilly, France) and Frédéric Mercierand (Pôle d'Expérimentation Avicole de Tours, F-37380 Nouzilly, France) for the care of animals. We acknowledge the staff from the research group "Fonction et régulation des protéines de l'oeuf" (INRA, UR0083 Recherches Avicoles, F-37380 Nouzilly, France) and more particularly Maryse Mills for their excellent technical assistance. We also thank Pr Maxwell Hincke (Faculty of medicine, university of Ottawa), Anne-Marie Chaussé and Fabrice Laurent (INRA, UR1282, Infectiologie et Santé Publique) for their critical reading of the present article and Christelle Hennequet-Antier for discussions on statistical analyses.

### Author details

<sup>1</sup>UR83 Recherches Avicoles, Institut National de la Recherche Agronomique, Nouzilly, France. <sup>2</sup>UMR1282, Infectiologie et Santé Publique, Institut National de la Recherche Agronomique, Nouzilly, France.

Received: 20 December 2012 Accepted: 28 May 2013

Published: 7 June 2013

### References

- De Reu K, Grijspeerdt K, Messens W, Heyndrickx A, Uyttendaele M, Debevere J, Herman L: **Eggshell factors influencing eggshell penetration and whole egg contamination by different bacteria, including *Salmonella enteritidis***. *Int J Food Microbiol* 2006, **112**(3):253–260.
- Gantois I, Ducatelle R, Pasmans F, Haesebrouck F, Gast R, Humphrey TJ, Van Immerseel F: **Mechanisms of egg contamination by salmonella enteritidis**. *FEMS Microbiol Rev* 2009, **33**(4):718–738.
- Rose ME, Orlans E, Buttress N: **Immunoglobulin classes in hens Egg - their segregation in yolk and white**. *Eur J Immunol* 1974, **4**(7):521–523.
- Rehault-Godbert S, Herve-Grepinet V, Gautron J, Cabau C, Nys Y, Hincke M: **Molecules involved in chemical defence of the chicken egg**. In *Improving the safety and quality of eggs and egg products vol. Egg chemistry, production and consumption*. Edited by Nys Y, Bain M, Van Immerseel F. Philadelphia: Woodhead Publishing; 2011:183–208.
- Shawkey MD, Kosciuch KL, Liu M, Rohwer FC, Loos ER, Wang JM, Beissinger SR: **Do birds differentially distribute antimicrobial proteins within clutches of eggs?** *Behavioral Ecology* 2008, **19**(4):920–927.
- Schafer A, Drewes W, Schwagel F: **Effect of storage temperature and time on egg white protein**. *Nahrung-Food* 1999, **43**(2):86–89.
- van Dijk A, Veldhuizen EJA, Haagsman HP: **Avian defensins**. *Vet Immunol Immunopathol* 2008, **124**(1–2):1–18.
- Sellier N, Vidal ML, Baron F, Michel J, Gautron J, Protais M, Beaumont C, Gautier M, Nys Y: **Estimations of repeatability and heritability of egg albumen antimicrobial activity and of lysozyme and ovotransferrin concentrations**. *Br Poult Sci* 2007, **48**:559–566.
- Swierczewska E, Skiba T, Sokolowska A, Noworyta-Glowacka J, Kopec W, Koeniowska M, Bobak L: **Egg white biologically active proteins activity in relation to laying hen's age**. Golden Tulip Parkhotel Doorwerth, Doorwerth, Netherlands: Proceedings of the XVII European Symposium on the Quality of Poultry Meat and XI European Symposium on the Quality of Eggs and Egg Products; 2005:69–72.
- Swierczewska E, Niemiec J, Noworyta-Glowacka J: **A note on the effect of immunostimulation of laying hens on the lysozyme activity in egg white**. *Anim Sci Pap Rep* 2003, **21**(1):63–68.
- Hamal KR, Burgess SC, Pevzner IY, Erf GF: **Maternal antibody transfer from dams to their egg yolks, egg whites, and chicks in meat lines of chickens**. *Poult Sci* 2006, **85**(8):1364–1372.
- De Reu K, Grijspeerdt K, Heyndrickx M, Zoons J, De Baere K, Uyttendaele M, Debevere J, Herman L: **Bacterial eggshell contamination in conventional**

- cages, furnished cages and aviary housing systems for laying hens. *Br Poult Sci* 2005, **46**(2):149–155.
13. Vucemilo M, Vinkovic B, Matkovic K, Stokovic I, Jaksic S, Radovic S, Granic K, Stubican D: **The influence of housing systems on the air quality and bacterial eggshell contamination of table eggs.** *Czech J Anim Sci* 2010, **55**(6):243–249.
  14. De Reu K, Messens W, Heyndrickx M, Rodenburg TB, Uyttendaele M, Herman L: **Bacterial contamination of table eggs and the influence of housing systems.** *World Poult Sci J* 2008, **64**(1):5–19.
  15. Protais J, Queguiner S, Boscher E, Piquet JC, Nagard B, Salvat G: **Effect of housing systems on the bacterial flora of egg shells.** *Br Poult Sci* 2003, **44**(5):788–790.
  16. Round JL, Mazmanian SK: **Inducible Foxp(3+) regulatory T-cell development by a commensal bacterium of the intestinal microbiota.** *Proc Natl Acad Sci USA* 2010, **107**(27):12204–12209.
  17. Macpherson AJ, Slack E, Geuking MB, McCoy KD: **The mucosal firewalls against commensal intestinal microbes.** *Semin Immunopathol* 2009, **31**(2):145–149.
  18. Li-Chan E, Nakai S: **Biochemical basis for the properties of egg white.** *Critical reviews in poultry biology* 1989, **2**(1):21–59.
  19. Davison F, Magor KE, Kaspers B, Fred D, Karel AS: **Structure and Evolution of Avian Immunoglobulins.** In *Avian Immunology*. vol. 1. London: Academic Press; 2008:107–127.
  20. Furuse M, Okumura J: **Nutritional and physiological-characteristics in germ-free chickens.** *Comp Biochem Physiol A Physiol* 1994, **109**(3):547–556.
  21. Billam P, LeRoith T, Pudupakam RS, Pierson FW, Duncan RB, Meng XJ: **Comparative pathogenesis in specific-pathogen-free chickens of two strains of avian hepatitis E virus recovered from a chicken with Hepatitis-Splenomegaly syndrome and from a clinically healthy chicken.** *Vet Microbiol* 2009, **139**(3–4):253–261.
  22. Peng W, Si W, Yin L, Liu H, Yu S, Liu S, Wang C, Chang Y, Zhang Z, Hu S, et al: **Salmonella enteritidis ghost vaccine induces effective protection against lethal challenge in specific-pathogen-free chicks.** *Immunobiology* 2011, **216**(5):558–565.
  23. Hong YH, Lillehoj HS, Lillehoj EP, Lee SH: **Changes in immune-related gene expression and intestinal lymphocyte subpopulations following Eimeria maxima infection of chickens.** *Vet Immunol Immunopathol* 2006, **114**(3–4):259–272.
  24. Gabriel I, Mallet S, Sibille P: **Digestive microflora of bird: factors of variation and consequences on bird (La microflore digestive des volailles: facteurs de variation et consequences pour l'animal).** *INRA Productions Animales* 2005, **18**(5):309–322.
  25. Tranter HS, Board RG: **The influence of incubation-temperature and Ph on the antimicrobial properties of Hen Egg-albumin.** *J Appl Bacteriol* 1984, **56**(1):53–61.
  26. Gong DQ, Wilson PW, Bain MM, McDade K, Kalina J, Herve-Grepinet V, Nys Y, Dunn IC: **Gallin; an antimicrobial peptide member of a new avian defensin family, the ovodefensins, has been subject to recent gene duplication.** *BMC Immunol* 2010, **11**:15.
  27. Herve-Grepinet V, Rehault-Godbert S, Gautron J, Hincke M, Mine Y, Nys Y: **Avian antimicrobial peptides in hen reproductive tract and egg.** *Turku, Finland: World Poultry Science Association, Proceedings of the 19th European Symposium on Quality of Poultry Meat, 13th European Symposium on the Quality of Eggs and Egg Products*; 2009:1–13.
  28. Sugiarto H, Yu PL: **Avian antimicrobial peptides: the defense role of beta-defensins.** *Biochem Biophys Res Commun* 2004, **323**(3):721–727.
  29. Mann K: **The chicken egg white proteome.** *Proteomics* 2007, **7**:3558–3568.
  30. Mageed AMA, Isobe N, Yoshimura Y: **Expression of avian beta-defensins in the oviduct and effects of lipopolysaccharide on their expression in the vagina of hens.** *Poult Sci* 2008, **87**(5):979–984.
  31. Yoshimura Y, Ohashii H, Subedi K, Nishibori M, Isobe N: **Effects of age, egg-laying activity, and Salmonella-inoculation on the expressions of gallinacin mRNA in the vagina of the hen oviduct.** *J Reprod Dev* 2006, **52**(2):211–218.
  32. Baron F, Gautier M, Brule G: **Factors involved in the inhibition of growth of salmonella enteritidis in liquid egg white.** *J Food Prot* 1997, **60**(11):1318–1323.
  33. Van Immerseel F, Gantois I, De Vylder J, Pasmans F, Haesebrouck F, Ducatelle R: **Mechanisms of egg contamination by salmonella enteritidis: what are the unique properties of this serotype?** Prague, Czech Republic: XVIII European Symposium on the quality of poultry meat, XII European symposium on the quality of eggs and egg products; 2007.
  34. Wesierska E, Saleh Y, Trziszka T, Kopec W, Siewinski M, Korzekwa K: **Antimicrobial activity of chicken egg white cystatin.** *World J Microbiol Biotechnol* 2005, **21**(1):59–64.
  35. Bourin M, Gautron J, Berges M, Attucci S, Le Blay G, Labas V, Nys Y, Rehault-Godbert S: **Antimicrobial potential of egg yolk ovoinhibitor, a multidomain Kazal-like inhibitor of chicken egg.** *J Agric Food Chem* 2012, **59**(23):12368–12374.
  36. Ardel W, Laskowski M: **Turkey ovomucoid 3rd domain inhibits 8 different serine proteinases of varied specificity on the same = Leu-18-Glu-19 = reactive site.** *Biochemistry* 1985, **24**(20):5313–5320.
  37. Shaw L, Golonka E, Potempa J, Foster SJ: **The role and regulation of the extracellular proteases of staphylococcus aureus.** *Microbiology-Sgm* 2004, **150**:217–228.
  38. Varhimo E, Varmanen P, Fallarero A, Skogman M, Pyorala S, Livanainen A, Sukura A, Vuorela P, Savijoki K: **Alpha- and beta-casein components of host milk induce Biofilm formation in the mastitis bacterium streptococcus uberis.** *Vet Microbiol* 2011, **149**(3–4):381–389.
  39. Ng H, Garibaldi JA: **Death of staphylococcus-aureus in liquid whole egg near Ph-8.** *Appl Microbiol* 1975, **29**(6):782–786.
  40. Rehault-Godbert S, Baron F, Mignon-Grasteau S, Labas V, Gautier M, Hincke MT, Nys Y: **Effect of temperature and time of storage on protein stability and anti-salmonella activity of egg white.** *J Food Prot* 2010, **73**(9):1604–1612.
  41. Mann K: **Proteomic analysis of the chicken egg vitelline membrane.** *Proteomics* 2008, **8**(11):2322–2332.
  42. Mann K, Mann M: **The chicken egg yolk plasma and granule proteomes.** *Proteomics* 2008, **8**(1):178–191.
  43. Jonchere V, Rehault-Godbert S, Hennequet-Antier C, Cabau C, Sibut V, Cogburn LA, Nys Y, Gautron J: **Gene expression profiling to identify eggshell proteins involved in physical defense of the chicken egg.** *BMC Genomics* 2010, **11**:57.
  44. Si W, Gong J, Tsao R, Zhou T, Yu H, Poppe C, Johnson R, Du Z: **Antimicrobial activity of essential oils and structurally related synthetic food additives towards selected pathogenic and beneficial gut bacteria.** *J Appl Microbiol* 2006, **100**(2):296–305.
  45. Mytilinaios I, Salih M, Schofield HK, Lambert RJW: **Growth curve prediction from optical density data.** *Int J Food Microbiol* 2011, **154**(3):169–176.
  46. Osserman EF, Lawlor DP: **Serum and urinary lysozyme (Muramidase) in monocytic and monomyelocytic leukemia.** *J Exp Med* 1966, **124**(5):921–952.

doi:10.1186/1471-2180-13-128

**Cite this article as:** Bedrani et al.: Passive maternal exposure to environmental microbes selectively modulates the innate defences of chicken egg white by increasing some of its antibacterial activities. *BMC Microbiology* 2013 **13**:128.

**Submit your next manuscript to BioMed Central and take full advantage of:**

- **Convenient online submission**
- **Thorough peer review**
- **No space constraints or color figure charges**
- **Immediate publication on acceptance**
- **Inclusion in PubMed, CAS, Scopus and Google Scholar**
- **Research which is freely available for redistribution**

Submit your manuscript at  
www.biomedcentral.com/submit

