



HAL
open science

Association study between the gibberellic acid insensitive gene and leaf length in a *Lolium perenne* L. synthetic variety

Jerome Auzanneau, Christian C. Huyghe, Abraham A. Escobar Gutierrez, Bernadette Julier, Francois Gastal, Philippe P. Barre

► To cite this version:

Jerome Auzanneau, Christian C. Huyghe, Abraham A. Escobar Gutierrez, Bernadette Julier, Francois Gastal, et al.. Association study between the gibberellic acid insensitive gene and leaf length in a *Lolium perenne* L. synthetic variety. *BMC Plant Biology*, 2011, 11, pp.1-13. 10.1186/1471-2229-11-183 . hal-02644833

HAL Id: hal-02644833

<https://hal.inrae.fr/hal-02644833>

Submitted on 28 May 2020

HAL is a multi-disciplinary open access archive for the deposit and dissemination of scientific research documents, whether they are published or not. The documents may come from teaching and research institutions in France or abroad, or from public or private research centers.

L'archive ouverte pluridisciplinaire **HAL**, est destinée au dépôt et à la diffusion de documents scientifiques de niveau recherche, publiés ou non, émanant des établissements d'enseignement et de recherche français ou étrangers, des laboratoires publics ou privés.

RESEARCH ARTICLE

Open Access

Association study between the gibberellic acid insensitive gene and leaf length in a *Lolium perenne* L. synthetic variety

Jérôme Auzanneau, Christian Huyghe, Abraham J Escobar-Gutiérrez, Bernadette Julier, François Gastal and Philippe Barre*

Abstract

Background: Association studies are of great interest to identify genes explaining trait variation since they deal with more than just a few alleles like classical QTL analyses. They are usually performed using collections representing a wide range of variability but which could present a genetic substructure. The aim of this paper is to demonstrate that association studies can be performed using synthetic varieties obtained after several panmictic generations. This demonstration is based on an example of association between the gibberellic acid insensitive gene (GAI) polymorphism and leaf length polymorphism in 'Herbie', a synthetic variety of perennial ryegrass.

Methods: Leaf growth parameters, consisted of leaf length, maximum leaf elongation rate (LERmax) and leaf elongation duration (LED), were evaluated in spring and autumn on 216 plants of Herbie with three replicates. For each plant, a sequence of 370 bp in GAI was analysed for polymorphism.

Results: Genetic effect was highly significant for all traits. Broad sense heritabilities were higher for leaf length and LERmax with about 0.7 in each period and 0.5 considering both periods than for LED with about 0.4 in each period and 0.3 considering both periods. GAI was highly polymorphic with an average of 12 bp between two consecutive SNPs and 39 haplotypes in which 9 were more frequent. Linkage disequilibrium declined rapidly with distance with r^2 values lower than 0.2 beyond 150 bp. Sequence polymorphism of GAI explained 8-14% of leaf growth parameter variation. A single SNP explained 4% of the phenotypic variance of leaf length in both periods which represents a difference of 33 mm on an average of 300 mm.

Conclusions: Synthetic varieties in which linkage disequilibrium declines rapidly with distance are suitable for association studies using the "candidate gene" approach. GAI polymorphism was found to be associated with leaf length polymorphism which was more correlated to LERmax than to LED in Herbie. It is a good candidate to explain leaf length variation in other plant material.

Background

Genetic association studies using accessions of unknown pedigree are increasingly used in plant biology to identify genes explaining variation of traits. Indeed, when compared to quantitative trait loci (QTL) analyses, these studies present the advantage of i) comparing concomitantly several alleles, ii) avoiding laborious population constructions and iii) exploiting the recombination events that have occurred over several generations [1-3].

For association studies, two approaches are possible base on the pattern of linkage disequilibrium (LD) decline [4]. The first one is the candidate gene approach used for populations showing a rapid LD decline. The second one is the whole genome scan approach used for populations showing a slow LD decline [4]. These two approaches have been mainly used for analysing the genetic variability of a species through core collections. However, core collections are often genetically structured, thus leading to the detection of spurious associations between the polymorphism of markers and traits [5-7]. In order to circumvent the detection of spurious

* Correspondence: philippe.barre@lusignan.inra.fr
INRA, UR4, Unité de Recherche Pluridisciplinaire Prairies et Plantes
Fourragères, Le Chêne, RD 150, 86600 Lusignan, France

associations, different methods of data analysis have been developed that take into account the core collection's substructure [5]. Nevertheless, the use of these methods allows only to study the intra-group variability while leaving the inter-group variability unexploited. Ideally, the best plant material for association studies should be multi-allelic and without any substructure. This is the case in synthetic varieties, obtained after several panmictic multiplication generations, as shown by Auzanneau [8]. However, to our knowledge, there are no previous reports concerning association studies on synthetic plant varieties.

Perennial ryegrass is the most sown forage and turf grass species in temperate climate and it is considered as a model for genomics in forage grasses [9]. In this species, like in all forage grasses, leaf length is an important trait affecting: i) vegetative yield [10-12], ii) intake rate by dairy cows [13], iii) plant survival under light competition conditions [14]. Furthermore, it is a quantitative trait presenting a large variability and a high heritability [15-17].

GAI plays an important role in plant growth in several species by acting on the gibberellin signal [18]. Mutants of this gene exist in various species, with dwarf or giant phenotypes. Some dwarf mutants are *OsGAI* in rice [18], *Rht-D1* in wheat [19] and *gai* in *Arabidopsis* [20,21] and some giant mutants are *SLR1* in rice [22], *sln* in barley [23,24], and *spy* in *Arabidopsis* [25]. Moreover, *GAI* is mapped on linkage group 3 in rice [26] <http://www.ncbi.nlm.nih.gov/entrez/viewer.fcgi?val=13699786&itemID=65&view=gb-withparts> and on linkage group 4 in perennial ryegrass [27]. In addition, a QTL of leaf length was found on linkage group 4 in the region of *GAI* [28].

The aim of this paper is to demonstrate that an association study following the candidate gene approach is possible in synthetic varieties. This demonstration is based on an example of association between the gibberellic acid insensitive gene (*GAI*) polymorphism and leaf length polymorphism in 'Herbie', a synthetic variety of perennial ryegrass (*Lolium perenne* L.) which presents no substructure and a short LD decline [8]. Moreover, a core collection of perennial ryegrass was used in order to compare the phenotypic variability observed in 'Herbie' against the variability present within the species.

Methods

Plant materials

We studied 216 plants of the 'Herbie', a synthetic variety chosen because of its large variability and because LD decreases rapidly [8]. It was registered for the first time in 2000 in France. We used the fourth generation of multiplication after the initial polycross in which 336 parents with 4 different origins were involved (Figure 1; Thieu Pustjens pers. com.). Seeds were sown in summer

2003 in individual pots and stored above 10°C with at least 14 hours of light per day in a greenhouse in order to avoid vernalization until the 24th of February 2004. At this date, three clones per plant of one main tiller were produced for phenotyping in spring and one clone was produced for conservation. This last clone was used to produce three new clones in autumn. We used 100 ecotypes (one plant per population) chosen in an Eurasian core collection in order to maximise the number of geographical origins (François Balfourier, pers. com., Supplementary data). For convenience, we named these 100 ecotypes: core collection (Cc). Seeds of this collection were sown in February 2004 in individual pots and stored above 10°C with at least 14 hours of light per day in a greenhouse until the 30th of September 2004. At this date, three clones per plant of one main tiller were produced.

Phenotyping

Two experiments with three replicates each were conducted in a greenhouse: the first in spring 2004 with Herbie genotypes and the second in autumn 2004 with Herbie and Cc genotypes. For each plant, one main tiller with its daughter tillers was planted at both periods. Plants were watered and nitrogen supplied in order to avoid any stress. After a growth period of three weeks, plants were cut back. The third and fourth uncut leaves that appeared after this defoliation were measured on one tiller per plant, three times a week from the time of their emergence until they reached maturity. Thermal time was calculated in growing degree days (°Cd) using a simple sum of mean daily air temperature above 0°C taking the day of cutting as a starting point. The spring experiment began on March 17, 2004 and finished on May 12. However, the plants were followed until the end of July in order to confirm their vegetative state by the absence of floral stem. The autumn experiment began on October 21, 2004 and finished on January 12, 2005. During the autumn experiment, the greenhouse was heated to maintain a temperature higher than 10°C.

Final leaf length and leaf growth kinetics of the third and fourth uncut leaves were used as phenotypic character for the association analysis. In order to estimate the parameters of leaf growth kinetics, leaf length measurements for each plant and leaf against thermal time were fitted a function inspired from the Euler integral [12,29,30], such that:

$$Y = Y_m \cdot \left(1 + \frac{te - t}{te - tm} \right) \cdot \left(\frac{t - tc}{te - tc} \right)^{\frac{te - tc}{te - tm}} \quad (1)$$

for $tc \leq t \leq te$ and $tc \leq tm < te$. For $t > te$, Eq. 1 is reduced to $Y = Y_m$.

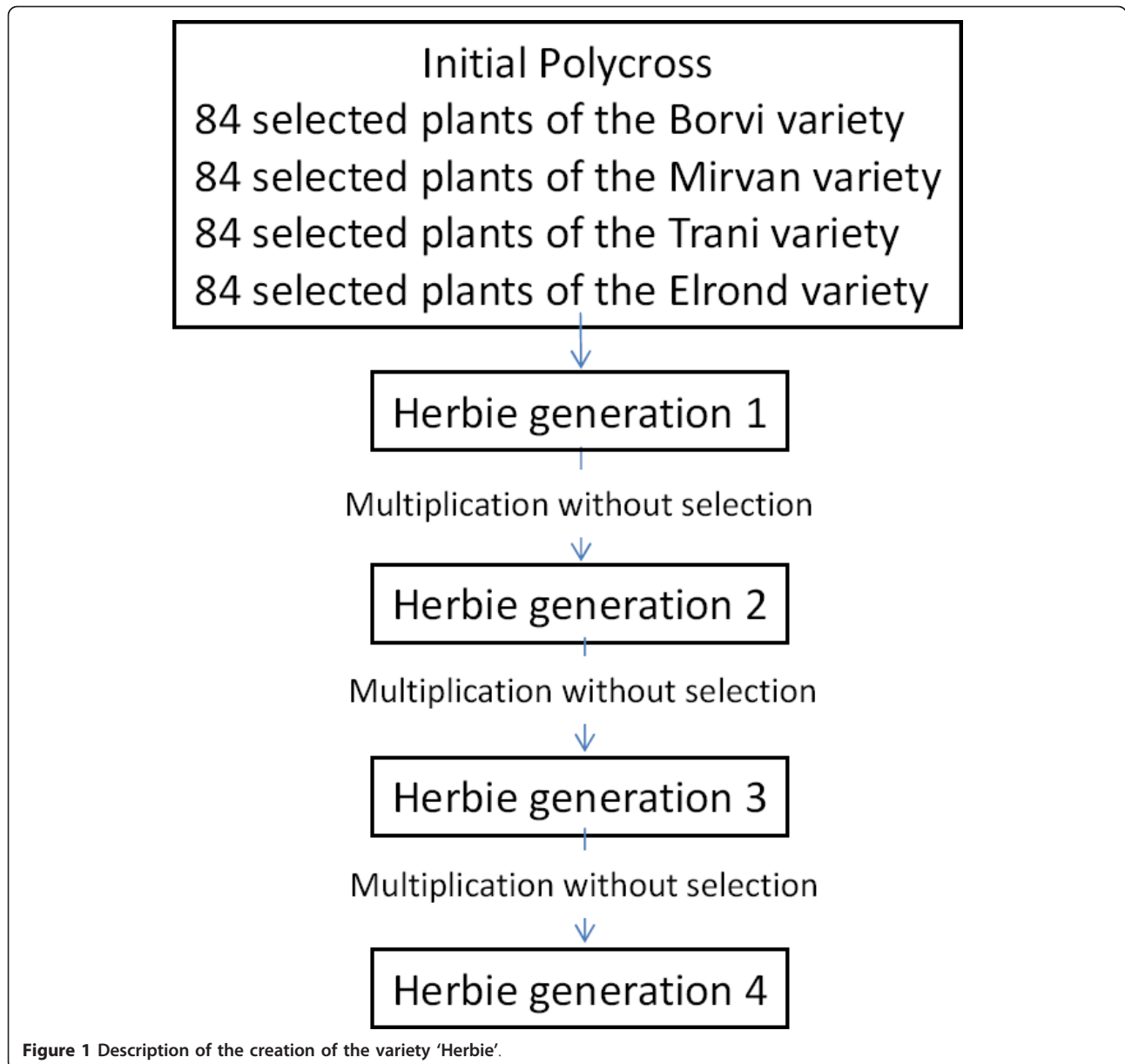


Figure 1 Description of the creation of the variety 'Herbie'.

Y (mm) is the leaf length at any time, Y_m (mm) is the final leaf length, t_c the time when leaf growth starts ($^{\circ}\text{Cd}$), t_m is the time at which the maximum leaf elongation rate is reached ($^{\circ}\text{Cd}$) and t_e is the time when leaf growth ends ($^{\circ}\text{Cd}$). Model fitting was performed by using the NLIN procedure of SAS [31]. Parameters were optimised using the Levenberg-Marquardt iterative method with automatic computation of the analytical partial derivatives [32,33]. Seed values were as followed: t_c ranged from 0 to 10 increasing by 1; t_m ranged from 10.001 to 1,000 increasing by 10 and t_e ranged from 150 to 1,200 increasing by 10. For each leaf, Y_m value was given by its maximum measured length. Only plants

with data on both the third and fourth leaves were analysed. An example of the Eq. 1 fitted to data is given in Figure 2.

It follows from Eq. 1 that the leaf elongation duration, LED , expressed in thermal time units ($^{\circ}\text{Cd}$), is given by difference $t_e - t_c$. However, because the fitting procedure yielded a few negatives values without physiological meaning for t_c , and in order to avoid incoherent estimates of LED , we numerically estimated the time at which any leaf was 5 mm long, and called this value t_{c_5} . LED was then estimated as:

$$LED = t_e - t_{c_5} \quad (2)$$

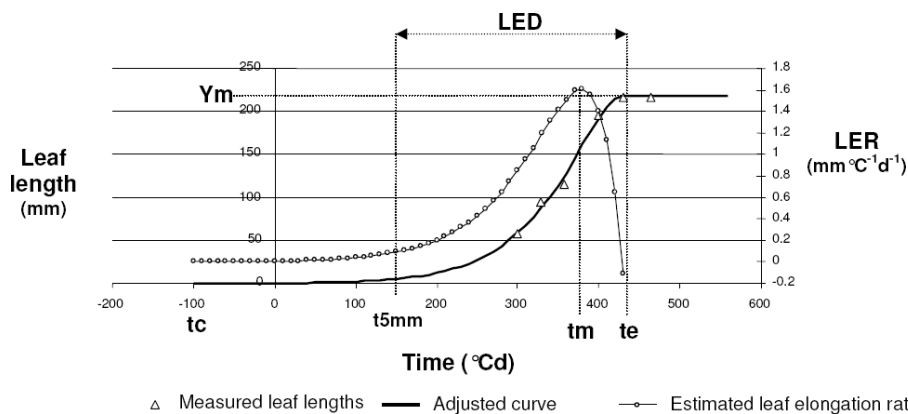


Figure 2 Example of the Eq.1 function fitted between leaf length and thermal time. Leaf elongation rate obtained by derivation of the function is shown. Are indicated: the maximum leaf length (Y_m), the starting time of elongation with a leaf length of 5 mm (t_c), the time when the speed elongation is maximal (t_m), the time when the leaf finishes growing (t_e) and the leaf elongation duration (LED).

The first derivative of Eq. 1 gives the leaf elongation rate, LER , at any time such that:

$$\frac{dY}{dt} = Y_m \cdot \left(\frac{\left(1 + \frac{te-t}{te-tm}\right) \cdot \left(\frac{t-tc}{te-tc}\right)^{\frac{te-tc}{te-tm}-1} - \left(\frac{t-tc}{te-tc}\right)^{\frac{te-tc}{te-tm}}}{te-tm} \right) \quad (3)$$

The maximum leaf elongation rate, LER_{max} , for each leaf was numerically obtained from Eq. 3. Summarising, three variables were studied at two growing periods, spring and autumn: final leaf length ($Llength$), leaf elongation duration (LED) and maximal leaf elongation rate (LER_{max}).

DNA extraction

For each Herbie genotype, DNA was extracted from 1 g of young leaf using a cetyltrimethyl ammonium bromide (CTAB) protocol [34,35]. DNA quantity and quality of each sample were assessed on agarose gel.

Genotyping

Herbie plants were genotyped using one SSR marker per linkage group (LG): B4D7 on LG1, G02-049 on LG2, G07-058 on LG3, G03-10 on LG4, pps397 on LG5, G04-56 on LG6 and G02-004 on LG7 [36,37]. PCR reactions and separation of amplified products were performed as described for SSRs in Barre [28].

In order to amplify a fragment of the GAI gene in *Lolium perenne* L., degenerated primers were designed on an alignment between *OsGAI* <http://www.ncbi.nlm.nih.gov/entrez/viewer.fcgi?val=13699786&itemID=65&view=gbwithparts>, *Rht-D1a* (AJ2425311), *SLN-1* (AF460219) and *DWARF8* (AJ242530) homologous GAI gene in rice, wheat, barley and maize, respectively. A sequence of 370 bp in GAI was amplified in the coding region (Figure 3). PCR reactions were set up in 50 μ L volumes in 96-well PCR plates. Each PCR reaction was

performed with 40 ng of template DNA, 0.4 μ M of each primer (5'-GACYTGGAGCCSTTCATGCT-3'; 5'-GTACACCTCSGACATGACCT-3'), 2 mM $MgSO_4$, 0.2 mM dNTP, 1 U Platinum Taq DNA polymerase High Fidelity (Invitrogen) and 1X PCR buffer (Invitrogen). The amplifications were performed using a PTC100 thermal cycler with the following program: 10 min at 94°C, followed by 35 cycles of 94°C for 1 min, 58.7°C for 1 min and 68°C for 2 min, a final extension of 10 min at 68°C. PCR product of each sample was purified using QIAquick Multiwell PCR Purification Kit (QIAGEN) and sent to Millegen, Toulouse, France for direct sequencing of PCR products with the forward primer. The direct sequencing of the PCR products allowed to obtain the genotype of each SNP but not the phase between SNPs. Sequences of GAI were obtained for 190 'Herbie' genotypes.

Phenotypic data analysis

For 'Herbie' and Cc separately, analyses of variance were conducted using GLM procedure (SS type 3) in SAS 8.1 [31]. Genotypic effect for each trait in each experiment was analysed using the model:

$$Y_{ij} = \mu + G_i + B_j + e_{ij}, \quad (4)$$

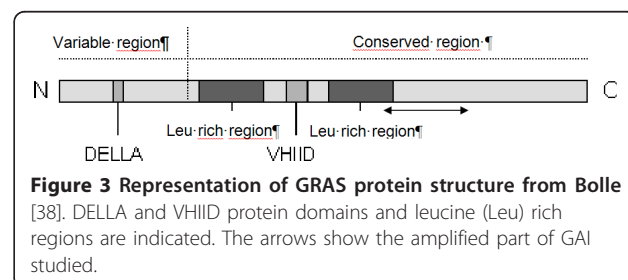


Figure 3 Representation of GRAS protein structure from Bolle [38]. DELLA and VHIIID protein domains and leucine (Leu) rich regions are indicated. The arrows show the amplified part of GAI studied.

with Y_{ij} the value of genotype i taken in the block j , μ the population average, G_i the effect of genotype i , B_j the effect of the block j and e_{ij} the residual. For each trait, the broad sense heritability (h^2) was estimated as:

$$h^2 = \frac{\sigma_{GE}^2}{\sigma_{GE}^2 + \sigma_E^2} \quad (5)$$

Genotypic variance (σ_{GE}^2) and residual variance (σ_E^2) were estimated using the VARCOMP procedure of SAS with the method *residual maximum likelihood algorithm* REML [31].

For 'Herbie', a general analysis of variance taking into account the two periods of measurement (spring/autumn) was also performed. Plants used in spring and in autumn were independent clones, so the model used was:

$$Y_{ijk} = \mu + G_i + P_k + (G \times P)_{ik} + B_j(P_k) + e_{ijk} \quad (6)$$

with Y_{ijk} the value of genotype i taken in the block j for the period k , μ the average of the population, G_i the effect of genotype i (random effect), $Period_k$ the effect of period k (fixed effect), $(G \times P)_{ik}$ the effect of the interaction Genotype \times Period (random effect), $B_j(P_k)$ the effect of block j nested in period k (fixed effect) and e_{ijk} the residual (random effect). G and P effects were tested using $G \times P$ interaction as residual and $G \times P$ interaction was tested using the model residuals.

For each trait, the broad sense heritability (h^2) was estimated as:

$$h^2 = \frac{\sigma_{GE}^2}{\sigma_{GE}^2 + \sigma_{GExPeriod}^2 + \sigma_E^2} \quad (7)$$

Genotypic variance (σ_{GE}^2), genotype \times period interaction variance ($\sigma_{GExPeriod}^2$) and residual variance (σ_E^2) were estimated using the VARCOMP procedure of SAS with the method REML [31].

Pearson's correlations between traits were calculated on the adjusted means by genotype (option LSMEANS of GLM procedure) using the CORR procedure of SAS [31].

Population substructure analysis

STRUCTURE software version 2.3 [5] was used to estimate the substructure of 'Herbie'. The length of the burn-in period was 50,000 and the number of MCMC replications after the burn-in was 100,000 for each. The given number of populations (K) was varied between 1 and 10. Computing was performed 50 times for each K value.

GAI polymorphism analysis

The identity of amplified sequences was checked using a BLASTN on NCBI <http://www.ncbi.nlm.nih.gov/BLAST/>. The sequences were aligned and manually checked using STADEN package 1.6.0 <http://staden.sourceforge.net/>. Data were formatted using TRITIPOL <http://bio-web.ensam.inra.fr/tritipol/> and REFSEQV5 (pers. com. Fabienne Granier, INRA, Versailles, France). Haplotype phase between SNPs was estimated using PHASE 2.1 software [39,40]. Haplotype number and haplotypic genotype for each individual were inferred.

LD analysis

The r^2 values of gametic LD between SNPs were determined according to Hill and Robertson [41] on the haplotypes inferred by PHASE using DNAsp software [42]. Genotypic LD between each pair of SNPs or SSRs was calculated using GENEPOP software [43].

Association study analysis

The association study was carried out independently for each period of measurement by using adjusted means per genotype. Three different approaches were used to test the association between the polymorphism of *GAI* and leaf elongation parameters:

1) a multiple linear regression analysis between leaf elongation parameters and SNPs. The stepwise method was used to fit a linear model of the general form:

$$Y_i = \beta_0 + \beta_1 X_1 + \beta_2 X_2 + \dots + \beta_n X_n + \varepsilon_i \quad (8)$$

where Y_i is any dependent variable (in our case: *Llength*, *LERmax* or *LED*); X_1, X_2, \dots, X_n are the independent variables (in our case: 20 SNPs), $\beta_0, \beta_1, \beta_2, \dots, \beta_n$, the regression coefficients and ε_i the error term. It was computed with the STEPWISE option of REG procedure in SAS [31].

2) a Scheffe's multiple comparison analysis for orthogonal linear contrasts [44] in order to test the effect of presence versus absence of each not rare haplotype (i.e. more than 10 plants holding the haplotype). It was computed with the GLM procedure in SAS [31] following the model given by Eq. 4.

3) a tree-scanning analysis of the phenotypic data against the haplotype tree. It was performed with TREESCAN 1.0 <http://darwin.uvigo.es/software/treescan.html>[45,46]. This method allows testing the mean difference of a trait between two groups obtained for each branch of a phylogenetic tree. Haplotypes present more than 10 times in the population were used to construct a phylogenetic tree with PHYLIP 3.67 <http://evolution.genetics.washington.edu/phylip.html> using maximum parsimony. In the execution of the TREESCAN program

the number of permutations was 5 000, and the minimum class size was set to five.

Results

Phenotypic analysis

Llength, *LERmax* and *LED* were determined for 216 plants of 'Herbie' in spring and autumn and on 100 plants of a perennial ryegrass core-collection (Cc) in autumn. Three replicates were used. Genetic effect was highly significant for all traits for both Herbie and the Cc and for both growing periods. Heritability was high for *Llength* and *LERmax* and medium for *LED* (Table 1). For all traits, a significant Genotype × Period interaction was detected in 'Herbie' and moderate heritabilities were found for both periods (Table 2). The variability of 'Herbie' was as high as the variability of the 'Cc' (Table 3). Correlation values between variables are presented in Table 4 for 'Herbie' including both spring and autumn measurements. For the 'Cc', correlations between variables during autumn were highly significant (*P* value < 0.001) between *Llength* and both *LERmax* (0.87) and *LED* (0.46), but not significant (*P* value > 0.05) between *LERmax* and *LED*. In both 'Herbie' and the 'Cc', leaf length was significantly correlated to both *LERmax* and *LED* with higher values for *LERmax*. On the other hand, *LERmax* and *LED* were not or were weakly correlated. Leaf parameters measured in spring were correlated to those measured in autumn with a stronger correlation for *Llength* and *LERmax* than for *LED*.

Population substructure analysis

Results from the analysis with STRUCTURE software, using one single sequence repeat (SSR) marker per linkage group, showed no evidence of substructure in 'Herbie' (Table 5). Furthermore, as expected between unlinked markers in a population presenting no substructure, no significant genotypic LD was detected between pairs of SSRs.

Table 1 Heritability of leaf parameters per period

Populations	Periods	Variables	σ^2_E	σ^2_{GE}	CV (%)	H ²
Herbie	Spring	<i>Llength</i>	1176	4524	11	0.79
		<i>LED</i>	658	700	9	0.52
		<i>LERmax</i>	0.024	0.096	9	0.80
	Autumn	<i>Llength</i>	1720	3668	13	0.68
		<i>LED</i>	1233	1003	12	0.45
		<i>LERmax</i>	0.028	0.063	11	0.69
Cc	Autumn	<i>Llength</i>	1634	4477	14	0.73
		<i>LED</i>	1557	836	15	0.35
		<i>LERmax</i>	0.033	0.094	12	0.74

Analyses of variance on leaf length (*Llength*), leaf elongation duration (*LED*) and maximum leaf elongation rate (*LERmax*) for spring and autumn on 'Herbie' and for autumn on the core collection (Cc). Are indicated: error (σ^2_E) and genotypic (σ^2_{GE}) variances, coefficient of variation (CV) and heritability (H²)

Table 2 Heritability of leaf parameters over periods

Variables	σ^2_E	σ^2_{GE}	σ^2_{Period}	$\sigma^2_{GE \times Period}$	CV	H ²
<i>Llength</i>	1430	19569	55510	4467	12	0.55
<i>LED</i>	928	4635	147004	1680	11	0.32
<i>LERmax</i>	0.03	0.37	18	0.09	10	0.53

Analyses of variance on leaf length (*Llength*), leaf elongation duration (*LED*) and maximum leaf elongation rate (*LERmax*) considering two periods (spring and autumn) on 'Herbie'. Are indicated: error (σ^2_E), genotypic (σ^2_{GE}), period (σ^2_{Period}) and genotype × period interaction ($\sigma^2_{GE \times Period}$) variances, coefficient of variation (CV) and heritability (H²)

GAI polymorphism

Twenty SNPs were detected in the 370 bp GAI sequence of 'Herbie' (Table 6). This corresponds to an average of 12 bp between two consecutive SNPs. Among these SNPs, six presented rare alleles with frequencies lower than 10% and one (GAI206) was not synonymous. PHASE software revealed the existence of 39 haplotypes (Table 7). Nine of them were present in more than 10 genotypes.

LD analysis

Gametic LD decreased rapidly with the distance (Figure 4). Indeed, *r*² values became lower than 0.1 beyond 150 bp. Genotypic LD results were in agreement with Gametic LD results (data not shown). For distances lower than 150 bp, more than 35% of SNP pairs presented a significant LD (threshold at 0.01 after a Bonferroni correction). Nonetheless, beyond 150 bp, SNP pairs did not present any significant deviation from linkage equilibrium.

Association study between GAI and leaf growth parameters

Three statistical methods were used to detect the association between the phenotypic polymorphism and GAI polymorphism.

The first method was a stepwise regression between leaf parameters and the 20 SNPs of GAI found in 'Herbie' (Eq. 8). The results are summarized in Table 8. It showed that, depending on the leaf parameter, three to six SNPs explained 8-14% of the phenotypic variance (R²). One SNP, named SNP069, appeared to be particularly interesting since it explained 2-5% of each parameter variance in both spring and autumn. It explained a difference of leaf length equal to 42 mm, for average leaf length of 312 mm, in spring and a difference equal to 30 mm, for an average of 303 mm, in autumn. It is noteworthy that the highest values of leaf growth parameters were obtained for heterozygous individuals showing a superdominance effect at SNP069.

The second method consisted of a Scheffé analyses in order to test the effect of presence *versus* absence of the different haplotypes on each trait (Table 9). The comparisons of means for the significant contrasts are presented in Table 10.

Table 3 Distributions of leaf parameters

Populations	Period	Variables	Means	Minimum	Maximum	CV in %
Herbie	Spring	<i>Llength</i>	316	97	509	22
		<i>LERmax</i>	1.74	0.88	2.65	18
		<i>LED</i>	274	165	355	11
	Autumn	<i>Llength</i>	306	144	474	22
		<i>LERmax</i>	1.51	0.84	2.56	18
		<i>LED</i>	295	198	448	13
Cc	Autumn	<i>Llength</i>	272	128	489	26
		<i>LERmax</i>	1.48	0.80	2.56	22
		<i>LED</i>	272	181	350	14

Distribution of individuals (means over three clones) for leaf length (*Llength*), leaf elongation duration (*LED*) and maximum leaf elongation rate (*LERmax*) in spring and autumn for 'Herbie' and in autumn for the core collection (Cc). CV indicates the coefficient of variation

The third method was a tree-scanning analysis of associations between haplotypes and leaf parameters. The haplotype tree is presented in Figure 5 and the results of the TREESCAN analysis is presented in Table 11. The strongest effect of phylogenetic groups on all traits was on *LERmax* in spring between the group of haplotypes: 2, 9, 10 and 15, and the group of haplotypes: 24, 25, 27, 30, 37. These two groups can be separated by polymorphism at SNP069 (Table 7). This separation had also an effect on *Llength* in spring. An effect was found on *LERmax* in spring and in autumn between the group of haplotypes 24 and 25, and the group including all the other haplotypes. These two groups can be separated by SNP114 and SNP138 which were in complete linkage disequilibrium when considering the nine most abundant haplotypes (Table 7). For all tests, the corrected permutational *P*-values after monotonicity were higher than 0.05.

Discussion

Phenotypic analyses

The phenotypic variability of 'Herbie' was very high and similar to the one observed in a core collection (Cc). This high variability of 'Herbie' was also observed on molecular data [8]. Such variability can be explained by

the high number of parents (336) in the initial polycross. This diversity shows that selection should be efficient even within a variety.

High heritability values were observed for leaf length and maximum leaf elongation rate (*LERmax*) within each period of measurements. Lower heritabilities were observed when taking into account both spring and autumn periods. These results are in accordance with values from different studies in forage grasses [16,17,47-49]. The significant Genotype × Period interaction indicates that the response of genotypes to environmental conditions did not follow the same trajectories. This is reflected by the correlation values between spring and autumn leaf length or *LERmax* which were only moderately high (Table 4). As previously observed by Ghesquière [17], leaf elongation duration (*LED*) had a lower heritability. This could be partly explained by a lack of precision in the *LED* estimates since no measurement could be performed at the beginning of leaf growth, during the hidden phase.

Spring and autumn leaf length averages in 'Herbie' were not significantly different. However, these similar leaf lengths were not reached by the same dynamics of leaf growth. It was observed a higher *LERmax* and a

Table 4 Correlations of leaf parameters over two periods

		Spring			Autumn		
		<i>Llength</i>	<i>LERmax</i>	<i>LED</i>	<i>Llength</i>	<i>LERmax</i>	<i>LED</i>
Spring	<i>Llength</i>						
	<i>LERmax</i>	0.90 ***					
	<i>LED</i>	0.55 ***	0.20 **				
Autumn	<i>Llength</i>	0.64 ***	0.62 ***	0.25 ***			
	<i>LERmax</i>	0.51 ***	0.62 ***	0.01 NS	0.82 ***		
	<i>LED</i>	0.38 ***	0.18 *	0.47 ***	0.60 ***	0.02 NS	

Correlations between leaf length (*Llength*), leaf elongation duration (*LED*) and maximum leaf elongation rate (*LERmax*) for two periods (spring and autumn) for 'Herbie'

NS: not significant

*** Significant at 0.001

** Significant at 0.01

* Significant at 0.05

Table 5 Probability of the populations (K) number for K varying from 1 to 10 using structure

	Probability of K
1	1
2	10 ⁻⁵⁷
3	10 ⁻¹⁷⁷
4	10 ⁻²⁰⁹
5	10 ⁻²⁰³
6	10 ⁻²³³
7	10 ⁻²⁵⁶
8	10 ⁻²⁷⁴
9	10 ⁻²⁷⁰
10	10 ⁻²⁴⁷

shorter *LED* in spring than in autumn, that could be explained by higher temperatures in spring (average of 16°C) than in autumn (average of 13°C).

The correlation between leaf length and *LERmax* was higher than the one between leaf length and *LED* in spring and in autumn for both 'Herbie' and the core collection. Similar results were observed by Ghesquière [17] in a collection of late heading perennial ryegrass ecotypes with correlations of 0.86 and 0.53 between adult leaf length and average leaf elongation rate and *LED*, respectively. It could be explained by the fact that at the beginning of leaf growing process there is a long period

Table 6 Characterisation of the 20 SNPs observed in the GAI sequence of 'Herbie'

SNP no.	SNP position	Polymorphism	Frequency
1	GAI006	A/C	0.01
2	GAI024	G/C	0.01
3	GAI039	A/G/C	0.20/0.19
4	GAI042	A/C	0.27
5	GAI045	T/C	0.21
6	GAI048	G/C	0.88
7	GAI051	A/G	0.59
8	GAI054	A/G	0.51
9	GAI060	G/C	0.85
10	GAI069	G/C	0.54
11	GAI072	G/C	0.08
12	GAI084	G/C	0.52
13	GAI099	G/C	0.42
14	GAI114	A/C	0.20
15	GAI138	G/C	0.76
16	GAI156	G/C	0.21
17	GAI189	G/C	0.85
18	GAI206	G/C	0.02
19	GAI222	A/G	0.94
20	GAI228	T/G	0.02

The frequencies refer to the first (or first two) allele of each locus presented in column Polymorphism

Table 7 Haplotypes of GAI in 'Herbie' and their number inferred using PHASE 2

Haplotype no.	Haplotype	Inferred no. in sample
1	CCAACGGAGGGGGCGCGCAG	1
2	CCACTGAAG<u>C</u>CGGCGCGCAG	66
3	CCACTGAAGCCGGCGGGCAG	1
4	CCACCGAGCGCCCCGCGCAG	1
5	CCACCGAGGGGGCGCGCAG	3
6	CCGATGGGGCCCGCGCGCAG	1
7	CCGACGGAGGGGCCGCGCAG	1
8	CCGACGGGGCCCGCGCGCAG	3
9	CCGACGGGG<u>C</u>CGGCGCCAG	57
10	CCGACGGGG<u>C</u>CGCCGCGCAG	17
11	CCGACGGGGCCCGCAGCGCAG	3
12	CCGACGGGGCCCCCGCGCAG	1
13	CCGACGGGGCCCGCGCCAG	1
14	CCGACGGGGCCCGGGCAG	2
15	CCGACCAGG<u>C</u>CGGCGCGCAG	14
16	CCGACCGGGCCCCCGCGCAG	1
17	CCGCTGAAGCCCGCGCGCAG	1
18	CCGCTGAACGCCGCGCGCAG	3
19	CCGCTGGAGCCCGCGCGCAG	1
20	CCGCTGGGGCCCGCGCGCAG	1
21	CCGCCGAAGCCCCCGCGCAG	3
22	CCGCCGAAGCCCCCGGGT	8
23	CCGCCGAAGCCCACCGCAG	1
24	CCGCCGAAG<u>G</u>CCCACGGCAG	56
25	CCGCCGAAG<u>G</u>CCCACGGCGG	15
26	CCGCCGAGCGCCCGCGCAG	1
27	CCGCCGAGG<u>C</u>CCCCGCGCAG	50
28	CCGCCGGAGGGCCCCCGCGCAG	2
29	CCGCCGGAGGGGGCGCGCAG	1
30	CCGCCGGAG<u>G</u>GGCCCGCGCAG	18
31	CCGCCGGAGGGCCCCCGCAG	5
32	CCGCCGGAGGGCCCCCGCGCAG	1
33	CCGCCGGACGCCCGGGCAG	3
34	CCGCCGGGGCCCCCGCGCAG	3
35	CCGCCGGGGCCCCGGGCAG	1
36	CCGCCGGGGCCCCCGCGCAG	3
37	CCGCCGGGG<u>C</u>CCCCGCGCAG	26
38	CGCCCCGAGGCGCCCGCGCAG	1
39	AACTGAAGCCGGCGCGCAG	3

The nine most abundant haplotypes are indicated in bold. In these haplotypes, SNP069 is underlined

of slow growth with no significant effect on the final leaf length. However, depending on the plant material, the impact of *LERmax* and *LED* on final leaf length could differ greatly (unpublished data). Since these two traits appear poorly correlated, a given final leaf length can result from different combinations of a wide range of *LED* and *LER* values.

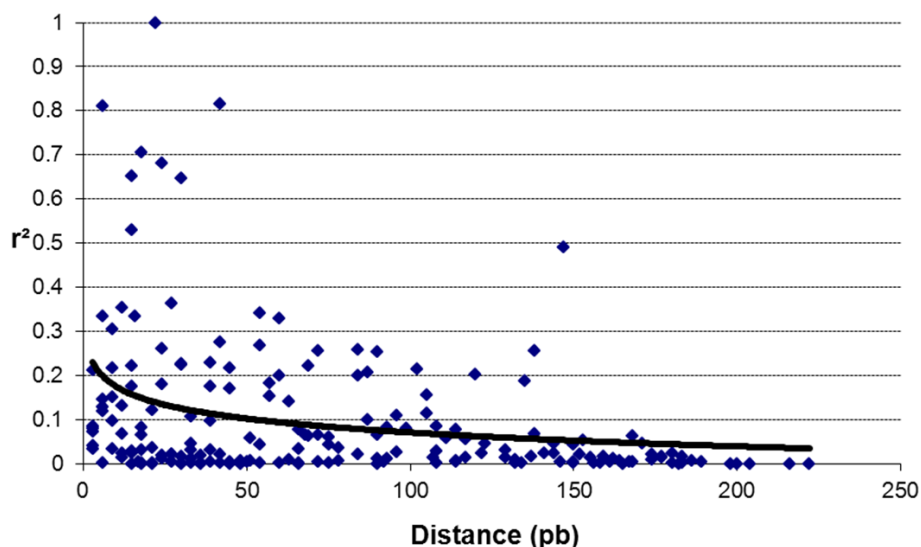


Figure 4 Pattern of genetic linkage disequilibrium (LD) decays. LD was measured between SNPs pairs, with r^2 , from haplotypic data of GAI gene inferred by PHASE software. A logarithm fitting-curve is presented in black ($R^2 = 0.09$).

Table 8 Association between GAI and leaf parameters polymorphisms: method 1

Periods	Variables	SNP	Pr > F ^a	Partial R ² in %	Global R ² in %	Average value	Effect of genotypes compared to the average		
							1/1*	2/2	1/2
Spring	<i>Llength</i> (mm)	SNP069	0.0038	5	9	312	5	-27	15
		SNP060	0.0361	3			7	-59	-15
		SNP039	0.0779	2			41	-21	15
	<i>LERmax</i> (mm°C ⁻¹ d ⁻¹)	SNP069	0.0094	4	10	1.732	0.038	-0.122	0.059
		SNP099	0.0463	2			0.063	-0.067	0.026
		SNP206	0.0734	2			-0.007	/	0.162
		SNP189	0.0727	2			-0.011	-0.179	0.064
	<i>LED</i> (°Cd)	SNP069	0.0783	2	8	273	1	-6	9
		SNP060	0.0969	2			2	0	-8
		SNP039	0.1004	2			13	-5	8
SNP048		0.1441	1			-1	-9	2	
Autumn	<i>Llength</i> (mm)	SNP069	0.0121	4	11	303	-6	-17	13
		SNP099	0.025	3			3	-6	4
		SNP048	0.0361	3			-5	-48	23
		SNP222	0.074	2			-2		16
	<i>LERmax</i> (mm°C ⁻¹ d ⁻¹)	SNP069	0.0064	4	14	1.507	0.081	-0.019	0.047
		SNP048	0.0555	2			-0.019	-0.096	0.089
		SNP114	0.0799	2			0.012	-0.508	-0.003
		SNP156	0.0838	2			0.01	-0.116	-0.005
		SNP099	0.1454	1			0.038	-0.024	0.004
	<i>LED</i> (°Cd)	SNP189	0.0448	2			0	-0.061	0.039
SNP051		0.0176	3	8	297	9	1	-6	
SNP069		0.0512	2			-5	-6	5	
SNP114		0.1167	1			-4	-23	8	
		SNP048	0.1362	1			-1	-33	6

Results of stepwise regressions for leaf length (*Llength*), leaf elongation rate (*LERmax*) and leaf elongation duration (*LED*) in spring and autumn on 'Herbie'. Are indicated: significant SNPs (P -value 0.15), the part of the phenotypic variation explained by each SNP (partial R^2), the part of the phenotypic variation explained by all SNPs (global R^2), the average value of each trait and the genotype effect compared to the average

* 1/1 and 2/2 indicate the two homozygous classes and 1/2 indicates the heterozygous class

^a Pr > F is the probability of having a tabulated F value at least as extreme as the calculated one

Table 9 Association between GAI and leaf parameters polymorphisms: method 2

Haplo-types	Sample size +	Sample size -	Leaf length		LERmax		Leaf Elongation Duration	
			spring	autumn	spring	autumn	spring	autumn
2	60	126	0.042	0.934	0.038	0.822	0.713	0.286
9	50	136	0.164	0.807	0.118	0.220	0.815	0.164
10	17	169	0.858	0.521	0.701	0.488	0.582	0.058
15	14	172	0.533	0.109	0.115	0.039	0.449	0.472
24	54	132	0.012	0.002	0.004	0.001	0.083	0.842
25	15	171	0.850	0.089	0.423	0.979	0.310	0.006
27	45	141	0.098	0.115	0.384	0.415	0.167	0.427
30	17	169	0.175	0.018	0.808	0.207	0.001	0.023
37	25	161	0.801	0.151	0.937	0.321	0.488	0.211

P-values (α) of Scheffé analyses for the effect of presence (+) versus absence (-) of a haplotype for leaf length (Llength), maximum leaf elongation rate (LERmax) and leaf elongation duration (LED) in spring and autumn on 'Herbie'. The nine most abundant haplotypes were tested. The numbers of samples including the haplotype (+) or not (-) are indicated. The values below 0.05 are in bold

GAI polymorphism

The density of SNPs was very high but comparable to that obtained in other genes in perennial ryegrass, bearing in mind that this parameter is highly variable over the genome [50,51]. Nevertheless, the number of haplotypes observed in 'Herbie' is relatively weak compared to the haplotype numbers expected. Knowing that there were 336 individuals in the initial polycross of the 'Herbie' variety and considering that they were unrelated, 672 haplotypes were expected under the assumption of total absence of LD. However, only 39 haplotypes were observed, and among those, 30 had a frequency lower than 2%. This implies that the parents of 'Herbie' were related and some haplotypes were highly selected.

Substructure and LD analyses

Based on the analysis of 216 plants, we confirmed that Herbie presents no substructure and that LD decay was very short in the GAI gene as reported by Auzanneau [8] based on the analysis of 47 plants. The absence of substructure and this rapid decline of LD with the genetic distance in Herbie were expected owing to the high number of parents and the variability in the initial polycross of the variety. Moreover, LD decline in perennial ryegrass is generally rapid and become not significant beyond

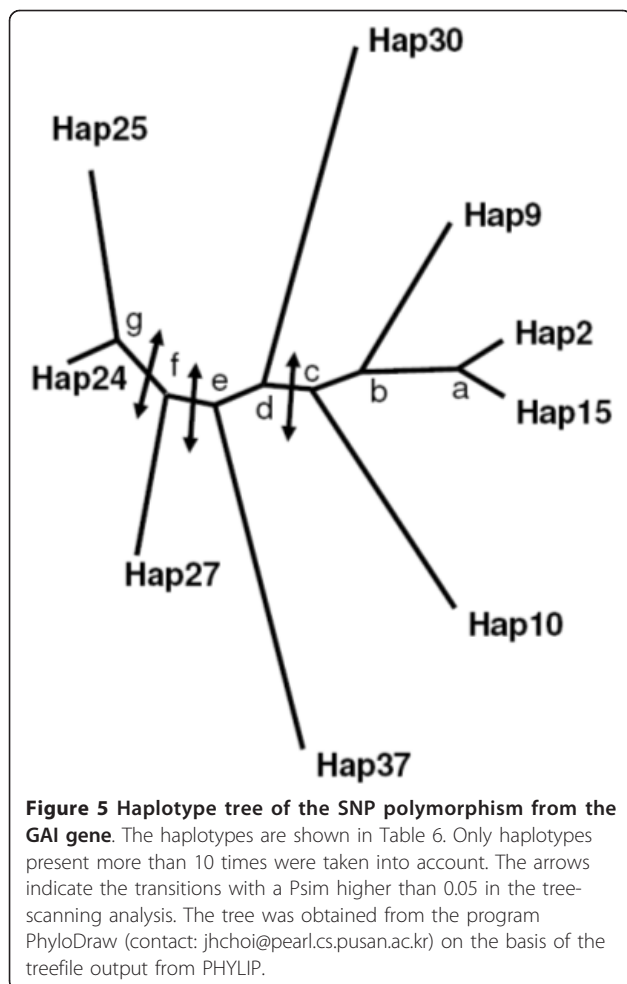
about 1 kb due to its outbreeding reproductive system [51-53]. This rapid LD decline and the absence of substructure allowed a "candidate gene" approach in this genome region [4]

Association study between GAI and leaf growth

This study in the highly diverse variety Herbie revealed that the GAI gene had a significant effect on leaf growth parameters: leaf length, maximum leaf elongation rate and leaf elongation duration, in both spring and autumn growing periods. This gene co-localized with QTL of lamina length found in spring and with QTL of leaf length and LER found in winter on linkage group 4 [28]. One SNP, SNP069, explained a part of the variability of all leaf length parameters in both spring and autumn. It was also found significant in the tree-scanning analysis. However this SNP does not induce an amino acid variation. Considering the rapid LD decline, the mutation responsible for leaf growth variability in 'Herbie' should be very close and highly linked to SNP069. In Arabidopsis, wheat and maize, mutants responsible for dwarf phenotypes present a deletion on the DELLA domain [19,21]. An association study on the whole gene sequence would be of interest to find the causal mutation. The possible association between the variation of the SNP069 and the variation of leaf length in

Table 10 Means per class presence (+) versus absence (-) of a haplotype for significant variables in Table 9

Haplo-types		Leaf length (mm)		LERmax (mm/°Cd)		Leaf Elongation Duration (°Cd)	
		spring	autumn	spring	autumn	spring	autumn
2	-	305					
	+	329					
24	-	313	305	1.74	1.52		
	+	310	299	1.71	1.47		
25	-						296
	+						306
30	-		303			271	296
	+		307			286	300



‘Herbie’ only by chance without any physical link between the SNP069 and the causal mutation (false positive) can be considered. This would imply that the SNP069 and a causal mutation elsewhere on the genome were in linkage disequilibrium. This LD can’t come from a population substructure as we demonstrated the absence of structure in the population. It could come from a drift due to the

Table 11 Association between GAI and leaf parameters polymorphisms: method 3

Traits	Branch	F-statistics	Pvk	Psim	PMon
Llength_spr	c-d	3.7	0.04	0.03	0.41
LER_spr	c-d	5.1	0.06	0.007	0.16
LER_spr	f-g	4.1	0.04	0.02	0.30
LER_spr	e-f	3.2	0.03	0.04	0.50
LER_aut	f-g	3.3	0.04	0.04	0.52

Tree-scanning analysis of associations between haplotypes and leaf parameters: leaf length (Llength), leaf elongation rate (LER) and leaf elongation duration (LED) in spring (spr) and autumn (aut) on ‘Herbie’. Branches with *Psim* (permutational probability before correction for multiple testing) lower than 0.05 are shown. Pvk is the proportion of the trait variation explained by the partition. PMon is the corrected permutational P-value after monotonicity is enforced

sampling of a limited number of individuals (216) but this seems unlikely regarding the high significance of the SNP069 on leaf length. Nevertheless, in order to test the real physical association between the SNP069 and a causal mutation for leaf length, it would be interesting to create populations with GG or CC at the SNP069 and to compare their leaf length.

A superdominance effect was found for all leaf growth parameters on SNP069 except for *LERmax* in autumn. This could be due to two very close SNPs with dominant effects with the favourable alleles in repulsion. This superdominance effect could also be explained by a real complementary effect of both alleles at a single SNP. Whatever the origin of the superdominance effect, this observation should have consequences on breeding strategies. The objective of molecular assisted selection could thus be to associate two alleles instead of fixing favourable alleles.

The results of the three methods used for the association study were all in agreement. Nevertheless, the maximum number of associations was found with the regression analysis using SNPs which seems more effective since it explained a higher level of phenotypic variance than the other two methods. A possible explanation is that haplotypes cumulate alleles of several SNPs which could have opposite effects leading to a decrease in the difference between haplotypes.

In the present study a single panmictic population, a synthetic variety, allowed us to detect a strong association between a SNP polymorphism and a trait. In the study of Skot [53] a strong association was detected between one SNP:4443 of the *LpHD1* gene and heading date (HD). Nine populations of perennial ryegrass, each including 96 plants, were used. Despite an overall association of SNP:4443 and HD, this association was more or less strong depending on the population. This shows that LD varies between populations leading to associations in some populations but not in others. Regarding this observation, it would be of interest to perform association studies within panmictic populations rather than to use individuals from several populations. Indeed, different associations can be found depending on the population used.

Unlike the findings of Thornsberry [54] in maize, we did not observe an effect of GAI gene on heading date in ‘Herbie’ (data not shown). However, we studied only a small part of the gene.

Conclusions

In this study, we showed that i) association studies can be performed following the “candidate gene” approach on a synthetic variety with a wide genetic basis, and ii) the detection of association between phenotypic polymorphism and sequence polymorphism was more powerful using SNP polymorphism than haplotypic polymorphism.

These observations could impact the way of using molecular information in plant breeding, in particular in outbreeding species. Indeed, the genetic basis of important traits could be directly detected in breeder populations and molecular markers used to increase favourable alleles.

Abbreviations

GAI: Gibberellic acid insensitive; Llength: Leaf length; LER: Maximum leaf elongation rate; LED: Leaf elongation duration; SNP: Single nucleotide polymorphism; QTL: Quantitative trait locus; LD: Linkage disequilibrium; Cc: Core collection; Llength, Leaf length; SSR: Simple sequence repeat.

Acknowledgements

We thank F. Balfourier for seeds of cleverly chosen Cc population. We thank M Barillot, JF Bourcier, D Cadier, M Caillaud, P Cormenier, A Faure, F Gelin, C Gibbelin, J Jousse, C Largeaud for their technical help and Corinne Melin for her help on references management. We thank I Cameleyre and S Flajoulot for their advice in molecular biology. J Auzanneau received a PhD grant from the Région Poitou-Charentes.

Authors' contributions

JA phenotyped and genotyped the Herbie and Cc populations. AEG estimated LER and LED using a beta function. BJ and FG have been involved in the interpretation of data in genetics and ecophysiology, respectively. PB and CH coordinated the project and have made substantial contributions to conception and design of the project. PB, JA and AEG performed statistical analyses and wrote the manuscript. All the authors read and approved the final manuscript.

Received: 7 July 2011 Accepted: 28 December 2011

Published: 28 December 2011

References

1. Buckler ES, Thornsberry JM: **Plant molecular diversity and applications to genomics.** *Curr Opin Plant Biol* 2002, **5**:107-111.
2. Flint-García SA, Thornsberry JM, Buckler ES: **Structure of linkage disequilibrium in plants.** *Annu Rev Plant Biol* 2003, **54**:357-374.
3. Yu JM, Buckler ES: **Genetic association mapping and genome organization of maize.** *Curr Opin Biotechnol* 2006, **17**:155-160.
4. Rafalski A: **Application of single nucleotide polymorphisms in crop genetics.** *Curr Opin Plant Biol* 2002, **54**:94-100.
5. Pritchard JK, Stephens M, Rosenberg NA, Donnelly P: **Association mapping in structured populations.** *Am J Hum Genet* 2000, **67**:170-181.
6. Thornsberry JM, Goodman MM, Oeblen J, Resovich S, Ijsebaert D, Buckler ES: **Dwarf8 polymorphisms associate with variation in flowering time.** *Nat Genet* 2001, **28**:286-289.
7. Skot L, Humphreys MO, Armstead I, Heywood S, Skot KP, Sanderson R, Thomas ID, Chorlton KH, Hamilton NRS: **An association mapping approach to identify flowering time genes in natural populations of *Lolium perenne* (L.).** *Mol Breed* 2005, **15**:233-245.
8. Auzanneau J, Huyghe C, Julier B, Barre P: **Linkage disequilibrium in synthetic varieties of perennial ryegrass.** *Theor Appl Genet* 2007, **115**:837-847.
9. Wilkins P, Humphreys M: **Progress in breeding perennial forage grasses for temperate agriculture.** *J Agric Sci* 2003, **140**:129-150.
10. Rhodes I: **The relationship between productivity and some components of canopy structure in ryegrass (*Lolium* spp.). I. Leaf length.** *J Agric Sci* 1969, **73**:315-319.
11. Rhodes I: **The relationship between productivity and some components of canopy structure in ryegrass (*Lolium* spp.). II. Yield, canopy structure and light interception.** *J Agric Sci* 1971, **77**:283-292.
12. Verdenal A: **De la simulation de la morphogénèse de l'appareil aérien du ray-grass anglais (*Lolium perenne* L.). Exploration d'un schéma cybérnetique inspiré du concept d'auto-organisation et applications.** Poitiers (FRA): Université de Poitiers; 2009, 207.
13. Barre P, Emile JC, Betin M, Surault F, Ghesquière M, Hazard L: **Morphological characteristics of perennial ryegrass leaves that influence short-term intake in dairy cows.** *Agron J* 2006, **98**:978-985.
14. Hazard L, Ghesquière M: **Evidence from the use of isozyme markers of competition in swards between short-leaved and long-leaved perennial ryegrass.** *Grass Forage Sci* 1995, **50**:241-248.
15. Cooper JP, Edwards D: **The genetic control of leaf development in *Lolium*. I Assessment of genetic variation.** *Heredity* 1961, **16**:63-82.
16. Rhodes I: **The relationship between productivity and some components of canopy structure in ryegrass (*Lolium* spp.) III. Spaced plant characters, their heritabilities and relationship to sward yield.** *J Agric Sci* 1973, **80**:171-176.
17. Ghesquière M, Hazard L, Betin M: **Breeding for management adaptation in perennial ryegrass (*Lolium perenne* L.). II. Genetic variability and heritability of leaf morphogenesis components.** *Agronomie* 1994, **14**:267-272.
18. Ogawa M, Kusano T, Katsumi M, Sano H: **Rice gibberellin-insensitive gene homolog, OsGAI encodes a nuclear-localized protein capable of gene activation at transcriptional level.** *Gene* 2000, **245**:21-29.
19. Peng JR, Richards DE, Hartley NM, Murphy GP, Devos KM, Flintham JE, Beales J, Fish LJ, Worland AJ, Pelica F, Sudhakar D, Christou P, Snape JW, Gale MD, Harberd NP: **'Green revolution' genes encode mutant gibberellin response modulators.** *Nature* 1999, **400**:256-261.
20. Koornneef M, Elgersma A, Hanhart CJ, Van Loenen-Martinet EP, Van Rijn L, Zeevaert JAD: **A gibberellin insensitive mutant of *Arabidopsis thaliana*.** *Physiol Plant* 1985, **65**:33-39.
21. Peng JR, Carol P, Richards DE, King KE, Cowling RJ, Murphy GP, Harberd NP: **The *Arabidopsis* GAI gene defines a signaling pathway that negatively regulates gibberellin responses.** *Genes Dev* 1997, **11**:3194-3205.
22. Ikeda A, Ueguchi-Tanaka M, Sonoda Y, Kitano H, Koshioka M, Futsuhara Y, Matsuoka M, Yamaguchi J: **Slender rice, a constitutive gibberellin response mutant, is caused by a null mutation of the SLR1 gene, an ortholog of the height-regulating gene GAI/RGA/RHT/D8.** *Plant Cell* 2001, **13**:999-1010.
23. Foster C: **Slender: an accelerated extension growth mutant of barley.** *Barley Genet Newsl* 1977, **7**:24-27.
24. Lanahan M, Ho T: **Slender barley: a constitutive gibberellin-response mutant.** *Planta* 1988, **175**:107-114.
25. Jacobsen SE, Olszewski NE: **Mutations at the spindly locus of *Arabidopsis* alter gibberellin signal-transduction.** *Plant Cell* 1993, **5**:887-896.
26. Chardon F, Virlon B, Moreau L, Falque M, Joets J, Decousset L, Murigneux A, Charcosset A: **Genetic architecture of flowering time in maize as inferred from quantitative trait loci meta-analysis and synteny conservation with the rice genome.** *Genetics* 2004, **168**:2169-2185.
27. Yamada T, Forster JW: **QTL analysis and trait dissection in ryegrass (*Lolium* spp.).** *Humphreys MO* Wageningen Academic Publishers; 2005, 43-53.
28. Barre P, Moreau L, Mi F, Turner L, Gastal F, Julier B, Ghesquière M: **Quantitative trait loci for leaf length in perennial ryegrass (*Lolium perenne* L.).** *Grass Forage Sci* 2009, **64**:310-321.
29. Verdenal A, Combes D, Escobar-Gutiérrez A: **A study of ryegrass architecture as a self-regulated system, using functional-structural plant modeling.** *Funct Plant Biol* 2008, **35**:911-924.
30. Yin X, Goudriaan J, Antinga EA, Os J, Spiertz HJ: **A flexible sigmoid function of determination growth.** *Ann Bot* 2003, **91**:61-371.
31. SAS Institute: **SAS language and procedure: usage. Version 8.1.** Cary, NC, USA: SAS Institute Inc; 2004.
32. Escobar-Gutiérrez A, Combes D, Rakocevic M, De Berranger C, Eprinchard-Ciesla A, Sinoquet H, Varlet-Grancher C: **Functional relationships to estimate morphogenetically active radiation from PAR and solar broadband irradiance measurements.** *Agric For Meteorol* 2008, **149**:1244-1253.
33. Lasseur B, Lothier J, Morvan-Bertrand A, Escobar-Gutiérrez A, Humphreys MO, Prud'homme MP: **Impact of defoliation frequency on regrowth and carbohydrate metabolism in contrasting varieties of *Lolium perenne*.** *Funct Plant Biol* 2007, **34**:418-430.
34. Saghai-Marouf MA, Soliman K, Jorgensen RA, Allard RW: **Ribosomal DNA spacer-length polymorphisms in barley: mendelian inheritance, chromosomal location, and population dynamics.** *PNAS* 1984, **81**:8014-8018.

35. Weising K, Beyersmann B, Ramser J, Kahl G: **Plant DNA fingerprinting with radioactive and digoxigenated oligonucleotide probes complementary to simple repetitive DNA sequences.** *Electrophoresis* 1991, **12**:159-169.
36. Studer B, Asp T, Frei U, Hentrup S, Meally H, Guillard A, Barth S, Muyllé H, Roldan-Ruiz I, Barre P, Koning-Boucoiran C, Uenk-Stunnenberg G, Dolstra O, Skot L, Skot KP, Turner LB, Humphreys MO, Kolliker R, Roulund N, Nielsen KK, Lübberstedt T: **Expressed sequence tag-derived microsatellite markers of perennial ryegrass (*Lolium perenne* L.).** *Mol Breed* 2008, **21**:533-548.
37. Faville M, Vecchies A, Schreiber M, Drayton M, Hughes L, Jones E, Guthridge K, Smith K, Sawbridge T, Spangenberg G, Bryan G, Forster J: **Functionally associated molecular genetic marker map construction in perennial ryegrass (*Lolium perenne* L.).** *Theor Appl Genet* 2004, **110**:12-32.
38. Bolle C: **The role of GRAS proteins in plant signal transduction and development.** *Planta* 2004, **218**:683-692.
39. Stephens M, Donnelly P: **A comparison of Bayesian methods for haplotype reconstruction from population genotype data.** *Am J Hum Genet* 2003, **73**:1162-1169.
40. Stephens M, Smith NJ, Donnelly P: **A new statistical method for haplotype reconstruction from population data.** *Am J Hum Genet* 2001, **68**:978-989.
41. Hill WG, Robertson A: **Linkage disequilibrium in finite populations.** *Theor Appl Genet* 1968, **38**:226-231.
42. Rozas J, Sanchez-DelBarrio JC, Messeguer X, Rozas R: **DnaSP, DNA polymorphism analyses by the coalescent and other methods.** *Bioinformatics* 2003, **19**:2496-2497.
43. Raymond M, Rousset F: **GENEPOP (Version1.2): population genetics software for exact tests and ecumenicism.** *J Hered* 1995, **86**:248-249.
44. Steel RGD, Torrie JH: **Principles and procedures of statistics: a biometrical approach.** 1981.
45. Posada D, Maxwell TJ, Templeton AR: **TreeScan: a bioinformatic application to search for genotype/phenotype associations using haplotype trees.** *Bioinformatics* 2005, **21**:2130-2132.
46. Templeton AR, Maxwell T, Posada D, Stengard JH, Boerwinkle E, Sing CF: **Tree scanning: a method for using haplotype trees in phenotype/genotype association studies.** *Genetics* 2005, **169**:441-453.
47. Edwards D, Cooper JP: **The genetic control of leaf development in *Lolium*. II Response to selection.** *Heredity* 1963, **18**:307-317.
48. Yamada T, Jones ES, Cogan NOI, Vecchies AC, Nomura T, Hisano H, Shimamoto Y, Smith KF, Hayward MD, Forster JW: **QTL analysis of morphological, developmental, and winter hardiness-associated traits in perennial ryegrass.** *Crop Sci* 2004, **44**:925-935.
49. Horst GL, Nelson CJ, Asay KH: **Relationship of leaf elongation to forage yield of tall fescue genotypes.** *Crop Sci* 1978, **18**:715-719.
50. Cogan N, Ponting R, Vecchies A, Drayton M, George J, Dracatos P, Dobrowolski M, Sawbridge TI, Smith K, Spangenberg G, Forster J: **Gene-associated single nucleotide polymorphism discovery in perennial ryegrass (*Lolium perenne* L.).** *Mol Genet Genomics* 2006, **276**:101-112.
51. Xing Y, Frei U, Schejbel B, Asp T, Lübberstedt T: **Nucleotide diversity and linkage disequilibrium in 11 expressed resistance candidate genes in *Lolium perenne*.** *BMC Plant Biol* 2007, **7**:43.
52. Ponting RC, Drayton MC, Cogan NOI, Dobrowolski MP, Spangenberg GC, Smith KF, Forster JW: **SNP discovery, validation, haplotype structure and linkage disequilibrium in full-length herbage nutritive quality genes of perennial ryegrass (*Lolium perenne* L.).** *Mol Genet Genomics* 2007, **278**:585-597.
53. Skot L, Humphreys J, Humphreys MO, Thorogood D, Gallagher J, Sanderson R, Armstead IP, Thomas ID: **Association of candidate genes with flowering time and water-soluble carbohydrate content in *Lolium perenne* (L.).** *Genetics* 2007, **177**:535-547.
54. Thornsberry J, Goodman M, Doebley J, Kresovich S, Nielsen D, Buckler E: **Dwarf8 polymorphisms associate with variation in flowering time.** *Nat Genet* 2001, **28**:286-289.

doi:10.1186/1471-2229-11-183

Cite this article as: Auzanneau *et al.*: Association study between the gibberellic acid insensitive gene and leaf length in a *Lolium perenne* L. synthetic variety. *BMC Plant Biology* 2011 **11**:183.

Submit your next manuscript to BioMed Central and take full advantage of:

- Convenient online submission
- Thorough peer review
- No space constraints or color figure charges
- Immediate publication on acceptance
- Inclusion in PubMed, CAS, Scopus and Google Scholar
- Research which is freely available for redistribution

Submit your manuscript at
www.biomedcentral.com/submit

