



**HAL**  
open science

## Effects of low doses of bisphenol A on the metabolome of perinatally exposed CD-1 mice

Nicolas J. Cabaton, Cécile Canlet, Perinaaz R. Wadia, Marie Tremblay-Franco, Roselyne Gautier, Jerome Molina, Carlos Sonnenschein, Jean Pierre J. P. Cravedi, Beverly S. Rubin, Ana Soto, et al.

### ► To cite this version:

Nicolas J. Cabaton, Cécile Canlet, Perinaaz R. Wadia, Marie Tremblay-Franco, Roselyne Gautier, et al.. Effects of low doses of bisphenol A on the metabolome of perinatally exposed CD-1 mice. *Environmental Health Perspectives*, 2013, 121 (5), pp.586-593. <10.1289/ehp.1205588>. <hal-02646392>

**HAL Id: hal-02646392**

**<https://hal.inrae.fr/hal-02646392v1>**

Submitted on 29 May 2020

HAL is a multi-disciplinary open access archive for the deposit and dissemination of scientific research documents, whether they are published or not. The documents may come from teaching and research institutions in France or abroad, or from public or private research centers.

L'archive ouverte pluridisciplinaire HAL, est destinée au dépôt et à la diffusion de documents scientifiques de niveau recherche, publiés ou non, émanant des établissements d'enseignement et de recherche français ou étrangers, des laboratoires publics ou privés.



Distributed under a Creative Commons CC BY 4.0 - Attribution - International License

## Effects of Low Doses of Bisphenol A on the Metabolome of Perinatally Exposed CD-1 Mice

Nicolas J. Cabaton,<sup>1,2</sup> Cécile Canlet,<sup>1,2</sup> Perinaaz R. Wadia,<sup>3</sup> Marie Tremblay-Franco,<sup>1,2</sup> Roselyne Gautier,<sup>1,2</sup> Jérôme Molina,<sup>1,2</sup> Carlos Sonnenschein,<sup>3</sup> Jean-Pierre Cravedi,<sup>1,2</sup> Beverly S. Rubin,<sup>3</sup> Ana M. Soto,<sup>3</sup> and Daniel Zalko<sup>1,2</sup>

<sup>1</sup>Institut National de la Recherche Agronomique (INRA), UMR1331, TOXALIM (Research Centre in Food Toxicology), Toulouse, France;

<sup>2</sup>Université de Toulouse, UMR1331, Toulouse, France; <sup>3</sup>Department of Anatomy and Cellular Biology, Tufts University School of Medicine, Boston, Massachusetts, USA

**BACKGROUND:** Bisphenol A (BPA) is a well-known endocrine disruptor used to manufacture polycarbonate plastics and epoxy resins. Exposure of pregnant rodents to low doses of BPA results in pleiotropic effects in their offspring.

**OBJECTIVE:** We used metabolomics—a method for determining metabolic changes in response to nutritional, pharmacological, or toxic stimuli—to examine metabolic shifts induced *in vivo* by perinatal exposure to low doses of BPA in CD-1 mice.

**METHODS:** Male offspring born to pregnant CD-1 mice that were exposed to vehicle or to 0.025, 0.25, or 25 µg BPA/kg body weight/day, from gestation day 8 through day 16 of lactation, were examined on postnatal day (PND) 2 or PND21. Aqueous extracts of newborns (PND2, whole animal) and of livers, brains, and serum samples from PND21 pups were submitted to <sup>1</sup>H nuclear magnetic resonance spectroscopy. Data were analyzed using partial least squares discriminant analysis.

**RESULTS:** Examination of endogenous metabolic fingerprints revealed remarkable discrimination in whole extracts of the four PND2 newborn treatment groups, strongly suggesting changes in the global metabolism. Furthermore, statistical analyses of liver, serum, and brain samples collected on PND21 successfully discriminated among treatment groups. Variations in glucose, pyruvate, some amino acids, and neurotransmitters (γ-aminobutyric acid and glutamate) were identified.

**CONCLUSIONS:** Low doses of BPA disrupt global metabolism, including energy metabolism and brain function, in perinatally exposed CD-1 mouse pups. Metabolomics can be used to highlight the effects of low doses of endocrine disruptors by linking perinatal exposure to changes in global metabolism.

**KEY WORDS:** bisphenol A, endocrine disruptor, fetal origins of adult disease, low dose, metabolomics, metabonomics, NMR fingerprints, partial least-squares discriminant analysis (PLS-DA), perinatal exposure, toxicology. *Environ Health Perspect* 121:586–593 (2013). <http://dx.doi.org/10.1289/ehp.1205588> [Online 21 February 2013]

Bisphenol A (BPA) is manufactured at a rate of > 3.1 million tons/year; thus, exposure to this compound is ubiquitous. Its possible impact on human health is reflected in recent worldwide regulatory legislation. For example, the Canadian authorities, followed by the European Union, have recently banned the use of BPA in infant feeding bottles, a landmark move to safeguard the health of infants and the general population (Asimakopoulos et al. 2012; European Commission 2011). Nevertheless, BPA is still widely used in polycarbonates, epoxy resins, paints, lacquers, and medical devices. BPA is also used as a base compound for the manufacture of flame retardants, brake fluids, and thermal papers (Fernandez et al. 2007). BPA monomers migrate out of these products and contaminate, for example, food, beverages, and intravenous infusions (Goodson et al. 2004). Although the main route of contamination is through ingestion, the transdermal route could also contribute to BPA exposure in humans when direct contact with BPA (free monomer) occurs (Zalko et al. 2011). Detectable levels of BPA were present in urine samples of > 92% of Americans tested in the 2003–2004 National Health and Nutrition Examination Survey (Calafat et al.

2008). Higher exposure levels were found in children and adolescents compared with adults. Of particular concern is the finding of high levels of BPA in premature infants being treated in neonatal intensive care units (Calafat et al. 2009). BPA has also been detected in maternal and fetal plasma, in human placenta, and in the milk of nursing mothers (Calafat et al. 2006; Sun et al. 2004). Animal studies have highlighted the estrogenic effects of BPA (vom Saal et al. 2007), although BPA is considered by some to be a weak estrogen due to its low potency compared with estradiol in reporter gene assays involving nuclear receptors (Blair et al. 2000). However, recent work has shown that BPA can be as potent as or more potent than estradiol in promoting some estrogenic activities (Alonso-Magdalena et al. 2006, 2012). BPA can also bind to membrane receptors (G protein-coupled receptor 30 and the membrane form of estrogen receptor-α) to produce effects similar to those of estradiol (Thomas and Dong 2006; Welshons et al. 2006; Wozniak et al. 2005).

Perinatal BPA exposure has been reported to decrease fertility and fecundity in female CD-1 mice (Cabaton et al. 2011) and to decrease fertility in male offspring of exposed

rats (Salian et al. 2011). Additional effects of perinatal BPA exposure include masculinization of behaviors and brain structures in female CD-1 mice (Richter et al. 2007; Rubin et al. 2006). Exposure to BPA through placenta and milk has been shown to increase early adipose storage and adipogenesis in a sex-specific and dose-dependent manner in rats and mice, with consequences on body weight later in life (Rubin and Soto 2009; Somm et al. 2009). BPA exposure has been linked to altered glucose homeostasis in pregnant female rodents and their male offspring (Alonso-Magdalena et al. 2010) and has been postulated to be a contributing factor in predisposing populations to the development of obesity and diabetes later in life (Heindel and vom Saal 2009; vom Saal et al. 2012).

The aim of metabonomics is to measure the “global, dynamic metabolic response of living systems to biological stimuli” (Nicholson and Lindon 2008). Metabolomics have furthered our understanding of drug toxicology while complementing more traditional approaches (Coen 2010). The integration of metabolomics and conventional toxicological studies is expected to provide valuable information for risk assessment of endocrine disruptors (EDs) such as BPA. Metabolic fingerprints based on nuclear magnetic resonance (NMR) spectroscopy, combined with appropriate statistical methods, could detect slight changes in the metabolome of cells, tissues, or organisms exposed to EDs, opening the way to examine whether exposure to an ED results in global

Address correspondence to D. Zalko, INRA, UMR 1331, TOXALIM (Research Centre in Food Toxicology), 180 Chemin de Tournefeuille, BP 93173, 31027 Toulouse Cedex 3, France. Telephone: 33 561 285 004. E-mail: dzalko@toulouse.inra.fr

Supplemental Material is available online (<http://dx.doi.org/10.1289/ehp.1205588>).

We thank W.V. Welshons for testing the rodent diet for estrogenicity; J. Iordachescu, M. Askenase, A. Tharp, and G. Whitt for their excellent technical assistance; and C. Schaeberle for editing the manuscript.

This work was supported by the National Institute of Environmental Health Sciences (grant ES08314 and its supplement), the European Commission-funded CASCADE network of Excellence (FP6, FOOD-CT-2004-506319), and the French National Research Agency (ANR).

The authors declare they have no actual or potential competing financial interests.

Received 18 September 2012; accepted 4 February 2013.

alterations of metabolism and whether these changes persist after cessation of exposure.

Metabolomic data are characterized by a large number of variables and by high correlations among these variables. Multivariate methods, such as principal components analysis (PCA) and partial least squares discriminant analysis (PLS-DA), which aim to solve both problems mentioned above, are thus the methods of choice for analyzing metabolomic data. PCA is used to determine the variation in the data set, regardless of the origin of this variation. PLS-DA is an alternative to PCA that allows discriminating observations according to classes defined *a priori*. Besides, PLS-DA is preferred to PCA for sample discrimination because the dimension reduction provided by PLS is explicitly guided by variability among groups, whereas PCA can identify only gross variability directions and is incapable of distinguishing variability that occurs among groups and within groups (Quintás et al. 2012). When more than two groups are included in the analysis, PLS-DA is more appropriate than PCA (Lindon et al. 2004).

We hypothesized that the global metabolism of mice perinatally exposed to BPA may be disrupted. The present study was designed to test this hypothesis in the outbred CD-1 mouse, a common animal model in BPA studies. Rodent strains vary in their susceptibility to low-dose BPA exposure (Richter et al. 2007). Rodent placentation at late stages of gestation is histologically close to human placentation (Zalko et al. 2003), and the mouse and rat have been shown to be excellent models for understanding the human syndrome observed in the offspring of mothers exposed to diethylstilbestrol during pregnancy (Vandenberg et al. 2009). Previous work using CD-1 mice has shown that, following transplacental transfer, fetuses become exposed to their mother's BPA burden and BPA metabolites (Markey et al. 2001; Wadia et al. 2007; Zalko et al. 2003). The body of literature clearly demonstrates multiple targets affected by low doses of BPA, including metabolism, especially when the exposure occurs at critical periods of development (Vandenberg et al. 2012).

In the present study, CD-1 fetuses and neonates were exposed to low doses of BPA [0.025, 0.25, or 25 µg BPA/kg body weight (bw)/day] administered to their mothers from the end of gestation day (GD) 8 through day 16 of lactation. Female offspring were examined for reproductive outcomes and found to have decreased fertility and fecundity (Cabaton et al. 2011), whereas the male offspring were examined for changes in global metabolism by assessing <sup>1</sup>H NMR profiling and analyzing the data using multivariate statistics. Male offspring were examined on postnatal day (PND) 2 (whole body) and on PND21. For

the latter group, samples included the liver (the main metabolizing organ), serum (circulating metabolites), and the brain, given the fact that recent studies have suggested that perinatal exposure to low doses of BPA could have persistent effects on brain structure, function, and behavior in rodents (Richter et al. 2007).

## Materials and Methods

**Chemicals.** Dimethylsulfoxide [DMSO; Chemical Abstracts Service Registry Number (CASRN) 67-68-5], bisphenol A (4,4'-dihydroxydiphenyldimethylmethane; CAS 80-05-7; product #239658, lot #03105ES; purity ≥ 99%), and butylated hydroxytoluene (BHT) were purchased from Sigma Chemical Company (St. Louis, MO, USA). Stock purity of BPA was confirmed as described previously (Cabaton et al. 2011). We purchased acetonitrile from Scharlab SL (Sentmenat, Spain), and deuterium oxide (D<sub>2</sub>O) and sodium 3-trimethylsilyl-2,2,3,3-tetradecuteriopropionate (TMSP) from Eurisotop (Saint-Aubin, France).

**Animals.** Twelve-week-old female CD-1 mice and proven breeder male mice (Charles River Laboratories, Wilmington, MA, USA) were maintained in temperature- and light-controlled (14 hr/10 hr light/dark cycle) conditions at the Human Nutrition and Research Center animal facility (Tufts University), a facility approved by the Association for Assessment and Accreditation of Laboratory Animal Care. All experimental procedures were approved by the Tufts University–Tufts Medical Center Institutional Animal Care and Use Committee. The animals were treated humanely and with regard for alleviation of suffering. Water (glass bottles) and food (Harlan Teklad 2018; Harlan Laboratories Inc., Indianapolis, IN, USA) were supplied *ad libitum*. The estrogenicity of food lots was measured by the E-SCREEN assay (Soto et al. 1992) and was also tested independently by W.V. Welshons (University of Missouri-Columbia, Columbia, MO, USA) (Welshons et al. 1990), confirming a negligible estrogenic activity (< 20 pmol of estrogen equivalents per gram). Cages, water, and bedding all tested negligible for estrogenicity by the E-SCREEN assay (Soto et al. 1992).

Mice were allowed to acclimatize for 5 days before being mated. The morning on which a vaginal plug was detected was considered GD1. On the evening of GD8, dams were implanted subcutaneously with Alzet osmotic pumps (model 2004; Alza Corp., Palo Alto, CA, USA) following the manufacturer's recommendations. Pumps were designed to deliver vehicle alone (50% DMSO in water) or one of three doses of BPA—0.025, 0.25, or 25 µg/kg bw/day—based on the mother's body weight at GD6. These pumps continued to release at a constant rate (0.25 µL/hr)

until day 16 of lactation (PND16); however, because the BPA dose was calculated based on the weight of the mother at GD6 and because maternal body weight increased from this point throughout pregnancy, the actual delivered dose of BPA decreased as pregnancy progressed. More than 90% of the dams delivered naturally; the F1 litters were culled to eight pups each, with no differences in sex ratio between treatment groups on the day after birth. Litters were weaned on PND21.

**Experimental design.** On PND2, one F1 male mouse was randomly chosen from each litter and euthanized by decapitation (control, *n* = 20; 0.025 µg BPA, *n* = 18; 0.25 µg BPA, *n* = 14; 25 µg BPA, *n* = 11). On PND21, one F1 male mouse was randomly chosen from each litter and euthanized by CO<sub>2</sub> asphyxiation. Blood samples (control, *n* = 11; BPA 0.025 µg/kg, *n* = 12; 0.25 µg BPA, *n* = 14; BPA 25 µg/kg, *n* = 12) and brain and liver samples (control, *n* = 11; BPA 0.025 µg/kg, *n* = 11; 0.25 µg BPA, *n* = 13; BPA 25 µg/kg, *n* = 14) were collected from each animal.

**Sample preparation for <sup>1</sup>H NMR spectroscopy.** Trunk blood was collected into serum tubes (Sarstedt, Newton, NC, USA). Blood samples were centrifuged for 5 min at 10,000 × *g* and 20°C. Serum was collected into microtubes and stored at –20°C. For analysis, serum samples (100 µL) were diluted with 600 µL D<sub>2</sub>O and centrifuged at 5,000 × *g* for 10 min before they were placed in 5-mm NMR tubes.

For liver, brain, and whole-pup samples, extraction procedures were derived from Folch et al. (1951) and from the method described by Waters et al. (2002). Samples of tissue (100 mg liver, whole brain, and whole pup) were homogenized using a Polytron PT2100 homogenizer (Kinematica, Lucerne, Switzerland) in acetonitrile/H<sub>2</sub>O (50/50, vol/vol) containing 0.1% BHT in an ice-water bath. Homogenates were centrifuged at 5,000 × *g* for 10 min at 4°C, and the supernatants were removed and lyophilized. The lyophilisates were reconstituted in 600 µL D<sub>2</sub>O containing 0.25 mM TMSP (as a chemical shift reference at 0 ppm). The reconstituted solutions were transferred to NMR tubes.

**<sup>1</sup>H NMR analyses.** All <sup>1</sup>H NMR spectra were obtained on a Bruker DRX-600-Avance NMR spectrometer (Bruker, Wissembourg, France) operating at 600.13 MHz for <sup>1</sup>H resonance frequency using an inverse detection 5 mm <sup>1</sup>H-<sup>13</sup>C-<sup>15</sup>N cryoprobe attached to a cryoplatfom (the preamplifier cooling unit).

The <sup>1</sup>H NMR spectra were acquired at 300K using the Carr-Purcell-Meiboom-Gill (CPMG) spin-echo pulse sequence with pre-saturation, with a total spin-echo delay (2*nτ*) of 100 msec to attenuate broad signals from proteins and lipoproteins. A total of 128 transients

were collected into 32,000 data points using a spectral width of 12 ppm, a relaxation delay of 2.5 sec, and an acquisition time of 2.28 sec. Prior to Fourier transformation, we applied an exponential line-broadening function of 0.3 Hz to the free induction decay.

To confirm the chemical structure of metabolites of interest, we performed two dimensional (2D)  $^1\text{H}$ - $^1\text{H}$  COSY (correlation spectroscopy) and 2D  $^1\text{H}$ - $^{13}\text{C}$ -HSQC (heteronuclear single quantum coherence spectroscopy) NMR experiments on selected samples.

**Data reduction and multivariate statistical analyses.** All NMR spectra were phased and baseline corrected, then data was reduced using AMIX (version 3.8; Bruker Analytik, Rheinstetten, Germany) to integrate 0.01 ppm-wide regions corresponding to the  $\delta$  10.0–0.5 ppm region. The  $\delta$  5.1–4.5 ppm region, which includes water resonance, was excluded. A total of 791–861 NMR buckets were included in the data matrices. To account for differences in sample amount, each integrated region was normalized to the total spectral area. Multivariate analyses were used to study the effect of the treatment (DMSO or 0.025  $\mu\text{g}$ , 0.25  $\mu\text{g}$ , or 25  $\mu\text{g}$  BPA/kg bw/day) on the metabolome. We first performed PCA to reveal intrinsic treatment-related clusters and detect eventual outliers. PLS-DA was then used to model the relationship between group and spectral data. PLS-DA is similar to PCA but uses discriminant variables that correlate to class membership. Before analysis, we used orthogonal signal correction filtering (Wold

et al. 1998) to remove variation not linked to the treatment (physiological, experimental, or instrumental variation). Filtered data were mean centered and scaled (unit variance or Pareto scaling). For the figures, we used Hotelling's  $T^2$  statistics to construct 95% confidence ellipses. The  $R^2Y$  parameter represents the explained variance. Seven-fold cross-validation was used to determine the number of latent variables to include in the PLS-DA model and to estimate the predictive ability ( $Q^2$  parameter) of the adjusted model. In addition, the robustness and validity of the PLS-DA results were calculated using a permutation test (200 permutations). Discriminant variables were determined using VIP (variable importance in the projection), an appropriate quantitative statistical parameter ranking the descriptors according to their ability to discriminate different doses. We used this global measure of the influence of each variable on the PLS components to derive a subset of the most important metabolites for the separation of experimental groups. We then used the Kruskal–Wallis test to determine which metabolites were significantly different between the groups. SIMCA-P software (V12; Umetrics AB, Umea, Sweden) was used to perform the multivariate analyses.

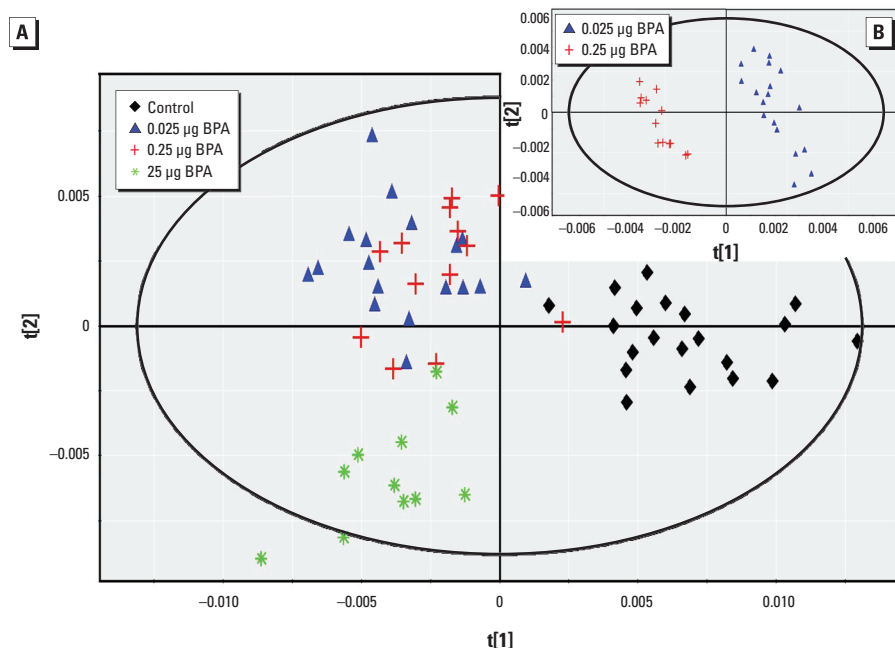
## Results

We observed no statistical differences in the weight of PND2 pups (whole body) or PND21 livers or brains. PCA results for the NMR spectral data sets [aqueous extracts of

PND2 pups (whole body) and serum, liver, and brain from PND21 male mice] are available in Supplemental Material, Figures S1–S4 (<http://dx.doi.org/10.1289/ehp.1205588>). The PCA score plots allowed a primary separation between groups. We then used a supervised PLS-DA model to further investigate the differences between groups.

**PND2 pups (whole body).** For the four experimental groups, the analysis generated a PLS-DA model with three latent components, characterized by a faithful representation of the data ( $R^2Y = 71.5\%$ ) and, more important, by a good cumulative predictive capacity ( $Q^2 = 0.557$ ) (Figure 1A). The score plot of the PLS-DA showed a clear separation between the control group and the BPA groups; 83 variables had a VIP value  $> 1.0$  (arbitrary threshold), and the median of 71 buckets was statistically different by the Kruskal–Wallis test. These differences corresponded to 20 metabolites, according to 2D NMR spectra identification. Endogenous metabolite variations induced by BPA exposure (25  $\mu\text{g}$ ) in PND2 pups (whole body samples) showed increases in lactate, glucose, cholines, creatine, and glycine compared with control samples. Conversely, we observed decreases in valine, leucine, isoleucine, and lysine (Table 1). In addition, taken separately and using a pairwise comparison, all groups could be successfully discriminated, including the 0.025  $\mu\text{g}$  BPA and 0.25  $\mu\text{g}$  BPA groups (Table 2; Figure 1B). The latter analysis generated a PLS-DA model with three latent components, characterized by a very faithful representation of the data ( $R^2Y = 98.0\%$ ), with  $> 90\%$  variability explained along axis 1, and by a very good cumulative predictive capacity ( $Q^2 = 0.731$ ). This analysis identified 13 metabolites that contributed to the difference in metabolic profiles between 0.025  $\mu\text{g}$  BPA and 0.25  $\mu\text{g}$  BPA groups by VIP ( $> 1$ ) and Kruskal–Wallis test (Table 1).

**PND21 serum.** The score plot of the PLS-DA using the entire data set (all groups taken together) showed a clear separation between the 25  $\mu\text{g}$  BPA group and all other groups along the first latent component, and between the 0.25  $\mu\text{g}$  BPA and 0.025  $\mu\text{g}$  BPA groups (Figure 2A). This analysis generated a PLS-DA model with two latent components, with  $R^2Y = 55.3\%$  and  $Q^2 = 0.450$ . Thirteen metabolites were identified as discriminant parameters in the metabolic profiles. Further pairwise comparisons between control and 0.025  $\mu\text{g}$  BPA samples and between control and 0.25  $\mu\text{g}$  BPA samples demonstrated a clear discrimination between the corresponding groups, and 14 and 11 metabolites, respectively, were identified as discriminant biomarkers (Figure 2B,C). BPA exposure (25  $\mu\text{g}$ ) induced a decrease in lipids [low-density lipoprotein (LDL) and very-low-density lipoprotein



**Figure 1.** Two-dimensional PLS-DA score plot of integrated  $^1\text{H}$  NMR spectra of PND2 whole body extracts. (A) PLS-DA results for all treatment treatment groups (control,  $n = 20$ ; 0.025  $\mu\text{g}$  BPA,  $n = 18$ ; 0.25  $\mu\text{g}$  BPA,  $n = 14$ ; and 25  $\mu\text{g}$  BPA,  $n = 11$ ) (first and second latent variable of three components:  $R^2Y = 71.5\%$  and  $Q^2 = 0.557$ ). (B) PLS-DA results for 0.025  $\mu\text{g}$  BPA and 0.25  $\mu\text{g}$  BPA taken separately (first and second latent variable of three components:  $R^2Y = 73.1\%$  and  $Q^2 = 0.731$ ).

(VLDL)] and lactate concentrations and an increase in glucose, taurine, and cholines compared with controls (Table 1).

**PND21 liver.** The four-group comparison generated a PLS-DA model with two latent components, characterized by a correct representation of the data ( $R^2Y = 48.3\%$ ) and  $Q^2$  equal to 0.421. The score plot of the PLS-DA showed a clear separation between control, 0.25  $\mu\text{g}$  BPA, and 25  $\mu\text{g}$  BPA, as well as between 0.25  $\mu\text{g}$  BPA and 25  $\mu\text{g}$  BPA (Figure 3A). The median of 46 buckets was significantly different according to the Kruskal–Wallis test, corresponding to three metabolites discriminating the three BPA-exposed groups, eight metabolites discriminating between 0.25  $\mu\text{g}$  BPA and 25  $\mu\text{g}$  BPA, and five metabolites separating control and 0.025  $\mu\text{g}$  BPA from 0.25  $\mu\text{g}$  BPA and 25  $\mu\text{g}$  BPA (Table 2). For more specificity, pairwise comparisons were carried out between the 0.025  $\mu\text{g}$  BPA group and all other groups, which led to the separations displayed in Figure 3B–D and further detailed in Table 1. When comparing 25  $\mu\text{g}$  BPA samples with control samples, endogenous metabolite variations induced by BPA exposure showed increases in taurine, glutamate, and glutathione, as well as decreases in lactate, glucose, cholines, and glycogen (Table 1).

**PND21 brain.** The four-group comparison generated a PLS-DA model with three latent components, characterized by a faithful representation of the data ( $R^2Y = 78.9\%$ ) and a good cumulative confidence criterion of prediction ( $Q^2 = 0.564$ ). The score plot of the PLS-DA showed a correct separation between controls and all BPA groups (Figure 4); 101 variables had a VIP value  $> 1.5$ , and the median of 76 buckets was statistically different according to the Kruskal–Wallis test, corresponding to 21 metabolites. Taken separately using pairwise comparisons, all groups could be discriminated from each other (Table 2). Endogenous metabolite variations between 25  $\mu\text{g}$  BPA and control showed an increase in glutamine, glycine, and aspartic acid, and a decrease in cholines, glutamate, and  $\gamma$ -aminobutyric acid (GABA) (Table 1).

## Discussion

Developmental exposure to BPA affects the reproductive system and fertility, alters brain development and behavior, disrupts glucose homeostasis, and may contribute to the development of obesity and metabolic syndrome (Alonso-Magdalena et al. 2010; Cabaton et al. 2011; Richter et al. 2007; Ryan et al., 2010). In the present study, we examined whether a novel approach based on metabolomics profiling could detect subtle changes in the metabolome following BPA exposure at low to very low doses, and whether metabolic profiling could reveal differences that persist beyond the end of the exposure

period. The BPA doses used in this study correspond to 1/2,000 to 1/2,000,000 of the no observed adverse effect level (NOAEL) for BPA (European Food Safety Authority 2006; U.S. Food and Drug Administration 2008), and the time of BPA exposure coincided with critical periods of development (GD8 to PND16).

Factors that affect fetal growth are also associated with the postnatal growth rate and with adult body weight in humans as well as

in laboratory animals (Barker 2004; Coe et al. 2008). The classical tools of toxicology are not designed to detect the effects of an early exposure to low doses of endocrine disruptors. Recent developments in metabolomics allow us to further explore global changes in biological systems. NMR spectroscopy is broadly used in research to characterize metabolite structure. NMR spectroscopy fingerprinting, combined with multivariate statistical analysis,

**Table 1.** Endogenous metabolite variations induced by BPA exposure (25  $\mu\text{g}$ ) in PND2 pups and in serum, liver, and brain of PND21 mice compared with controls.

Metabolites	$^1\text{H}$ NMR chemical shifts $\delta$ (ppm)	PND2		PND21	
		Whole body	Serum	Liver	Brain
Lipids <sup>a</sup>	0.86 (m); 0.90 (m); 1.26 (m); 1.30 (m)		–		
Lactate	1.33 (d); 4.11 (q)	+	–	–	
Glucose	3.54 (m); 3.66 (m); 3.70 (m); 3.74 (m); 3.78 (m); 3.82 (m); 3.86 (m); 3.90 (m)	+	+	–	
Taurine	3.26 (t); 3.42 (t)		+	+	
Cholines <sup>b</sup>	3.20 (s); 3.22 (s); 3.23 (s)	+	+	–	–
Creatine	3.03 (s); 3.93 (s)	+			
Glutamate	2.08 (m); 2.34 (m)			+	–
Glutamine	2.14 (m); 2.46 (m)				+
Glycine	3.55 (s)	+			+
Valine, leucine, isoleucine	0.94 (d); 0.96 (d); 1.0 (d); 1.01 (d); 1.05 (d)	–			
Lysine	1.72 (m); 2.98 (m)	–			
Glutathione	2.17 (m); 2.56 (m); 2.94 (m)			+	
Glycogen	5.42 (m)			–	
Aspartic acid	2.65 (dd); 2.80 (dd)				+
GABA	1.90 (q); 2.27 (t); 3.01 (t)				–

Abbreviations: +, significantly increased concentration; –, significantly decreased concentration; GABA,  $\gamma$ -aminobutyric acid. Chemical shifts (ppm) are relative to TMSP ( $^1\text{H}$ ,  $\delta$ ). Multiplicity of signals is indicated in parentheses: d, doublet; dd, doublet of doublet; m, multiplet; q, quadruplet; s, singlet; t, triplet.

<sup>a</sup>Low-density lipoprotein and very-low-density lipoprotein. <sup>b</sup>Phosphatidylcholine and glycerophosphocholine.

**Table 2.** Pairwise model parameter comparison of PND2 whole body and PND21 liver, brain, and serum between treatment groups.

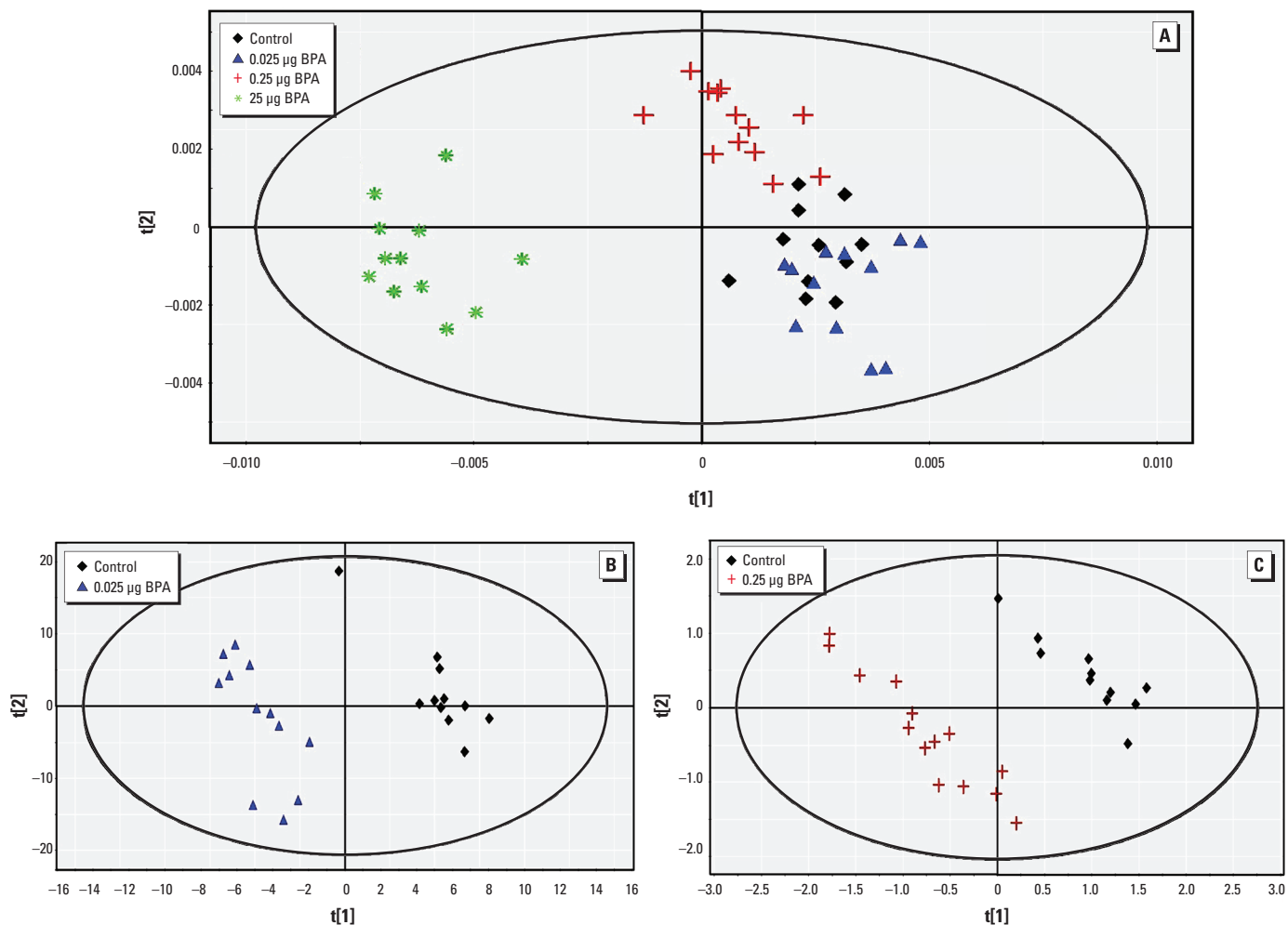
Groups compared	<i>n</i>	PLS components	$R^2Y$ (%)	$Q^2$ (cumulative)
<b>PND2</b>				
Whole body				
Control/0.025 $\mu\text{g}$ BPA	38	2	99.3	0.979
Control/0.25 $\mu\text{g}$ BPA	34	2	99.4	0.970
Control/25 $\mu\text{g}$ BPA	31	1	99.5	0.989
0.025 $\mu\text{g}$ BPA/0.25 $\mu\text{g}$ BPA	31	3	98.0	0.731
0.025 $\mu\text{g}$ BPA/25 $\mu\text{g}$ BPA	29	1	98.3	0.943
0.25 $\mu\text{g}$ BPA/25 $\mu\text{g}$ BPA	25	2	98.9	0.969
<b>PND21</b>				
Liver				
Control/0.025 $\mu\text{g}$ BPA	21	1	89.7	0.822
Control/0.25 $\mu\text{g}$ BPA	24	1	99.5	0.980
Control/25 $\mu\text{g}$ BPA	24	2	99.7	0.990
0.025 $\mu\text{g}$ BPA/0.25 $\mu\text{g}$ BPA	23	3	99.5	0.896
0.025 $\mu\text{g}$ BPA/25 $\mu\text{g}$ BPA	24	3	99.4	0.950
0.25 $\mu\text{g}$ BPA/25 $\mu\text{g}$ BPA	26	2	98.8	0.928
Brain				
Control/0.025 $\mu\text{g}$ BPA	22	2	99.0	0.955
Control/0.25 $\mu\text{g}$ BPA	22	2	99.0	0.963
Control/25 $\mu\text{g}$ BPA	21	1	90.0	0.664
0.025 $\mu\text{g}$ BPA/0.25 $\mu\text{g}$ BPA	23	3	98.5	0.932
0.025 $\mu\text{g}$ BPA/25 $\mu\text{g}$ BPA	25	3	99.5	0.941
0.25 $\mu\text{g}$ BPA/25 $\mu\text{g}$ BPA	26	4	99.4	0.895
Serum				
Control/0.025 $\mu\text{g}$ BPA	23	3	99.6	0.826
Control/0.25 $\mu\text{g}$ BPA	25	4	98.9	0.932
Control/25 $\mu\text{g}$ BPA	23	3	99.8	0.991
0.025 $\mu\text{g}$ BPA/0.25 $\mu\text{g}$ BPA	26	3	96.3	0.891
0.025 $\mu\text{g}$ BPA/25 $\mu\text{g}$ BPA	23	2	99.0	0.937
0.25 $\mu\text{g}$ BPA/25 $\mu\text{g}$ BPA	26	3	99.3	0.973

provides a powerful tool to detect metabolic changes induced by very low doses of EDs, allowing discrimination between several experimental groups on the basis of over- or underexpression of endogenous molecules. In the present study, we used  $^1\text{H-NMR}$  followed by PCA and PLS-DA analyses. PCA was used to detect potential outliers. PCA usually allows only a first-step discrimination between groups. When there are more than two groups, PLS-DA is more appropriate (Lindon et al. 2004). We performed PLS-DA—now routinely used in the field of metabolomics—to explore NMR fingerprints linked with perinatal exposure to BPA. Linear combinations of NMR buckets were constructed and then used to visualize differences (or similarities) between groups. One primary objective of our study was to identify exposure biomarkers that would correlate with the metabolic changes triggered by perinatal exposure to BPA, thus providing a proof of concept that  $^1\text{H-NMR}$ , completed by robust statistical analysis, is a powerful tool that would discriminate between exposed versus nonexposed animals.

PLS-DA is a classification method widely used in metabolomics to discriminate between treatment groups and to identify biomarkers responsible for this discrimination (Gavaghan et al. 2002; Martin et al. 2009). Our models were cross-validated, and their robustness was assessed with permutation tests. A robust model is associated with a  $Q^2$  value  $> 0.40$  (McCombie et al. 2009). This was the case for all our models. The parameters of the PLS-DA models were estimated based on data sets comprising 49 (PDN21) to 63 (PND2) individuals. Because a large number of variables had to be processed, cross-validation was necessary to avoid overfitting. Results of permutation tests demonstrated that our analyses were robust and not obtained by chance. Discriminating variables were identified using the VIP and Kruskal–Wallis test, providing variables that explain the discrimination between groups. The next step was to connect some discriminant metabolites with possible mechanisms of action and to suggest some exposure biomarkers.

We were able to identify groups of pups that were perinatally exposed to low doses of

BPA ( $0.025 \mu\text{g}/\text{kg bw}/\text{day}$ ) with robust statistical models ( $Q^2 > 0.4$ ), even at a very early age (PND2). Among the discriminating variables, glucose was affected by perinatal exposure to BPA. Alonso-Magdalena et al. (2010) have also shown that BPA exposure to mice during pregnancy disrupts glucose homeostasis in 6-month-old male offspring. It makes sense that the shift observed for glucose would in turn be involved in the disruption of pyruvate biosynthesis through glycolysis. Pyruvate supplies energy to living cells through the Krebs cycle (aerobic respiration) and, alternatively, ferments to produce lactate (anaerobic respiration); pyruvate was also increased in PND2 pups. In this case, lactate could still be utilized by neurons, as already demonstrated in mice, rats, and humans (Wyss et al. 2011; Zilberter et al. 2010). At PND2, two other variables (increased levels of creatine and glycine) contributed to the discrimination between the control and  $25 \mu\text{g}$  BPA groups, respectively. Creatine, a product of amino acid degradation (including glycine), is a major metabolite found mainly in muscle and brain, and it appears



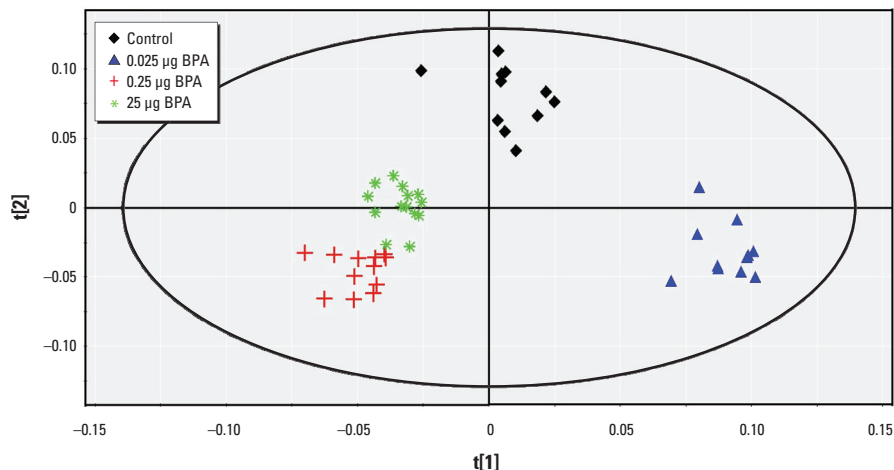
**Figure 2.** Two-dimensional PLS-DA score plot of integrated  $^1\text{H-NMR}$  spectra of PND21 serum. (A) PLS-DA results for all four treatment groups [control,  $n = 11$ ;  $0.025 \mu\text{g}$  BPA,  $n = 12$ ;  $0.25 \mu\text{g}$  BPA,  $n = 14$ ; and  $25 \mu\text{g}$  BPA,  $n = 12$  (two components):  $R^2Y = 55.3\%$  and  $Q^2 = 0.450$ ]. (B) PLS-DA results for control and  $0.025 \mu\text{g}$  BPA (three components:  $R^2Y = 99.6\%$  and  $Q^2 = 0.826$ ) (C) PLS-DA results for control and  $0.25 \mu\text{g}$  BPA (four components:  $R^2Y = 98.9\%$  and  $Q^2 = 0.932$ ).

to be affected by prenatal exposure to BPA. An increase in creatine levels might lead to an increase in ATP production and, consequently, to increased energy metabolism. Glycine, a key precursor of porphyrins involved in heme production, is an inhibitory neurotransmitter in the central nervous system, especially in the spinal cord and brainstem, as well as in the retina. An increase in glycine may disrupt the global energy metabolism as well as brain and neurologic functions. Conversely, a decrease in essential amino acids, namely valine, leucine, and isoleucine, could reflect a disruption in their degradation pathways, which would be consistent with previous observations in GD18 rat fetuses exposed to butylbenzylphthalate (Sumner et al. 2009). Finally, we found that BPA exposure increased concentrations of cholines in PND2 mice, which may affect membrane integrity and could favor a decrease in acetylcholine production in the brain.

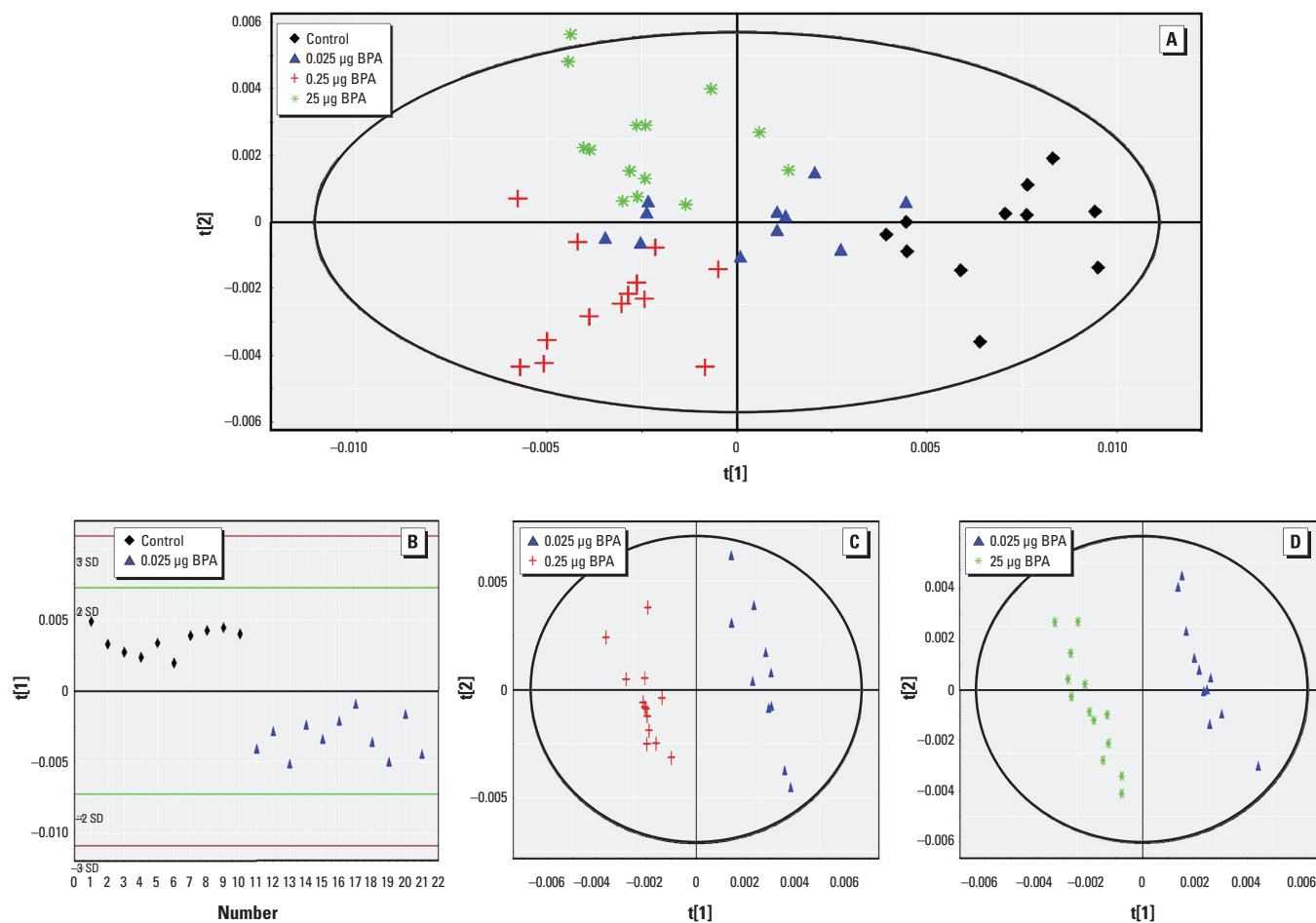
In PND21 tissues, we were able to distinguish all BPA exposure groups from controls. As observed in PND2 mice, glucose in serum and liver was affected by perinatal

BPA exposure. Similarly, cholines were also decreased, reflecting a potential disruption in membrane integrity. In PND21 serum samples, a decrease in lipids (VLDL and

HDL) and an increase in taurine (involved in the conjugation of bile acids) suggest that lipid metabolism may also be affected by BPA exposure. Taurine is a key amino



**Figure 4.** Two-dimensional PLS-DA score plot of integrated  $^1\text{H}$  NMR spectra of PND21 brain extracts from control ( $n = 11$ ), 0.025  $\mu\text{g}$  BPA ( $n = 11$ ), 0.25  $\mu\text{g}$  BPA ( $n = 13$ ), and 25  $\mu\text{g}$  BPA ( $n = 14$ ) groups (first and second latent variable of three components:  $R^2Y = 78.9\%$  and  $Q^2 = 0.564$ ).



**Figure 3.** Two-dimensional PLS-DA score plot of integrated  $^1\text{H}$ NMR spectra of PND21 liver extracts. (A) PLS-DA results for all four treatment groups [control,  $n = 11$ ; 0.025  $\mu\text{g}$  BPA,  $n = 11$ ; 0.25  $\mu\text{g}$  BPA,  $n = 13$ ; 25  $\mu\text{g}$  BPA,  $n = 14$  (first and second latent variable of three components:  $R^2Y = 48.3\%$  and  $Q^2 = 0.421$ ). (B) PLS-DA results for control and 0.025  $\mu\text{g}$  BPA (one component:  $R^2Y = 89.7\%$  and  $Q^2 = 0.822$ ); red and green lines indicate  $\pm 3$  SD and  $\pm 2$  SD, respectively. (C) PLS-DA results for 0.025  $\mu\text{g}$  BPA and 0.25  $\mu\text{g}$  BPA (three components:  $R^2Y = 99.5\%$  and  $Q^2 = 0.896$ ). (D) PLS-DA results for 0.025  $\mu\text{g}$  BPA and 25  $\mu\text{g}$  BPA (three components:  $R^2Y = 99.4\%$  and  $Q^2 = 0.950$ ).

acid for cardiovascular function and for the development and function of skeletal muscle. Taurine, also a major constituent of bile, was decreased in liver (and serum) in PND21 mice, reflecting a possible disruption in the digestive process. In liver extracts, an increase in glutathione in animals exposed to 25 µg BPA suggested a possible modulation of this detoxification pathway and also a hyperproduction of pyruvate, a key metabolite involved in the Krebs cycle, glycolysis, and glycogenesis. These changes may affect energy metabolism pathways.

Regarding PND21 brain extracts, recent studies have highlighted alterations in brain development following perinatal exposure to BPA (Itoh et al. 2012; Kunz et al. 2011). In the present study, two neurotransmitters (GABA and glutamate) were significantly decreased in all BPA-exposed animals compared with controls. Glutamate, the major excitatory transmitter in the brain, is the precursor for the synthesis of GABA, the major inhibitory transmitter in the adult brain. It is important to note that prior to their neurotransmission roles during adulthood, both glutamate and GABA are thought to influence processes of neural development, including proliferation, migration, differentiation, and survival (Lujan et al. 2005). Therefore, decreased levels of these neurotransmitters during postnatal development could be expected to exert lasting effects on the brain. In the present study, glutamine (the precursor of glutamate) was increased in the brain, whereas glutamate levels decreased, suggesting a conversion problem and possibly disruption and/or damage in brain function. Aspartate, produced from oxaloacetate (by transamination), is another neurotransmitter that stimulates *N*-methyl-D-aspartate receptors, the predominant molecule that controls synaptic plasticity and memory function. An increase in aspartate, known as an excitatory neurotransmitter, which increases the likelihood of depolarization in the postsynaptic membrane, might induce behavioral hyperactivity (Ishido et al. 2011).

## Conclusion

We observed significant and unequivocal shifts in the global metabolism of young male mice perinatally exposed to low doses of BPA. Our metabolomics studies on extracts from PND2 and PND21 males suggest that energy metabolism and brain function are the main targets. Work is ongoing on samples from female mice perinatally exposed to the same doses of BPA, euthanized at later time points with the aim of better understanding the mechanisms of action of BPA and the effects of BPA long after the time of exposure.

This study provides a proof of concept that metabolomics, here as NMR-based metabolic fingerprints, can be used as a novel approach

and a powerful tool to detect metabolic shifts following perinatal exposure to BPA, even at very low doses. A similar approach could be used for other EDs, and we expect this approach to contribute to a better understanding of the modulations/disruption of the metabolome triggered during critical windows of development. Metabolomics could also be suitable and reliable for the analysis of biological fluids, such as urine or blood, in animal models and in human populations.

## REFERENCES

- Alonso-Magdalena P, Morimoto S, Ripoll C, Fuentes E, Nadal A. 2006. The estrogenic effect of bisphenol A disrupts pancreatic β-cell function *in vivo* and induces insulin resistance. *Environ Health Perspect* 114:106–112.
- Alonso-Magdalena P, Ropero AB, Soriano S, Garcia-Arrevalo M, Ripoll C, Fuentes E, et al. 2012. Bisphenol-A acts as a potent estrogen via non-classical estrogen triggered pathways. *Mol Cell Endocrinol* 355:201–207.
- Alonso-Magdalena P, Vieira E, Soriano S, Menes L, Burks D, Quesada I, et al. 2010. Bisphenol A exposure during pregnancy disrupts glucose homeostasis in mothers and adult male offspring. *Environ Health Perspect* 118:1243–1250.
- Asimakopoulos AG, Thomaidis NS, Koupparis MA. 2012. Recent trends in biomonitoring of bisphenol A, 4-*t*-octylphenol, and 4-nonylphenol. *Toxicol Lett* 210:141–154.
- Barker DJ. 2004. The developmental origins of adult disease. *J Am Coll Nutr* 23:588S–595S.
- Blair RM, Fang H, Branham WS, Hass BS, Dial SL, Moland CL, et al. 2000. The estrogen receptor relative binding affinities of 188 natural and xenochemicals: structural diversity of ligands. *Toxicol Sci* 54:138–153.
- Cabaton NJ, Wadia PR, Rubin BS, Zalko D, Schaeberle CM, Askenase MH, et al. 2011. Perinatal exposure to environmentally relevant levels of bisphenol A decreases fertility and fecundity in CD-1 mice. *Environ Health Perspect* 119:547–552.
- Calafat AM, Weuve J, Ye X, Jia LT, Hu H, Ringer S, et al. 2009. Exposure to bisphenol A and other phenols in neonatal intensive care unit premature infants. *Environ Health Perspect* 117:639–644.
- Calafat AM, Ye X, Silva MJ, Kuklenyik Z, Needham LL. 2006. Human exposure assessment to environmental chemicals using biomonitoring. *Int J Androl* 29:166–171.
- Calafat AM, Ye X, Wong LY, Reidy JA, Needham LL. 2008. Exposure of the U.S. population to bisphenol A and 4-*tert*-octylphenol: 2003–2004. *Environ Health Perspect* 116:39–44.
- Coe BL, Kirkpatrick JR, Taylor JA, Vom Saal FS. 2008. A new 'crowded uterine horn' mouse model for examining the relationship between foetal growth and adult obesity. *Basic Clin Pharmacol Toxicol* 102:162–167.
- Coen M. 2010. A metabolomic approach for mechanistic exploration of pre-clinical toxicology. *Toxicology* 278:326–340.
- European Commission. 2011. Commission Directive 2011/8/EU, amending Directive 2002/72/EC as regards the restriction of use of bisphenol A in plastic infant feeding bottles. *Off J Eur Union* L26:11–14. Available: <http://eur-lex.europa.eu/LexUriServ/LexUriServ.do?uri=OJ:L:2011:026:0011:0014:EN:PDF> [accessed 4 March 2013].
- European Food Safety Authority. 2006. Opinion of the Scientific Panel on Food Additives, Flavourings, Processing Aids and Materials in Contact with Food on a request from the commission related to 2,2-bis(4-hydroxyphenyl)propane (bisphenol A). *EFSA J* 428:1–75. Available: <http://www.efsa.europa.eu/de/scdocs/doc/428.pdf> [accessed 28 February 2013].
- Fernandez MF, Arrebola JP, Taoufik J, Navalón A, Ballesteros O, Pulgar R, et al. 2007. Bisphenol-A and chlorinated derivatives in adipose tissue of women. *Reprod Toxicol* 24:259–264.
- Folch J, Ascoli I, Lees M, Meath JA, Le BN. 1951. Preparation of lipid extracts from brain tissue. *J Biol Chem* 191:833–841.
- Gavaghan CL, Wilson ID, Nicholson JK. 2002. Physiological variation in metabolic phenotyping and functional genomic studies: use of orthogonal signal correction and PLS-DA. *FEBS Lett* 530:191–196.
- Goodson A, Robin H, Summerfield W, Cooper I. 2004. Migration of bisphenol A from can coatings—effects of damage, storage conditions and heating. *Food Addit Contam* 21:1015–1026.
- Heindel JJ, vom Saal FS. 2009. Role of nutrition and environmental endocrine disrupting chemicals during the perinatal period on the aetiology of obesity. *Mol Cell Endocrinol* 304:90–96.
- Ishido M, Masuo Y, Terasaki M, Morita M. 2011. Rat hyperactivity by bisphenol A, but not by its derivatives, 3-hydroxybisphenol A or bisphenol A 3,4-quinone. *Toxicol Lett* 206:300–305.
- Itoh K, Yaoi T, Fushiki S. 2012. Bisphenol A, an endocrine-disrupting chemical, and brain development. *Neuropathology* 32:447–457.
- Kunz N, Camm EJ, Somm E, Lodygensky G, Darbre S, Aubert ML, et al. 2011. Developmental and metabolic brain alterations in rats exposed to bisphenol A during gestation and lactation. *Int J Dev Neurosci* 29:37–43.
- Lindon JC, Holmes E, Nicholson JK. 2004. Toxicological applications of magnetic resonance. *Prog Nucl Magn Reson Spectrosc* 45:109–143.
- Luján R, Shigemoto R, López-Bendito G. 2005. Glutamate and GABA receptor signalling in the developing brain. *Neuroscience* 130:567–580.
- Markey CM, Michaelson CL, Veson EC, Sonnenschein C, Soto AM. 2001. The mouse uterotrophic assay: a reevaluation of its validity in assessing the estrogenicity of bisphenol A. *Environ Health Perspect* 109:55–60.
- Martin JC, Canlet C, Delplanque B, Agnani G, Lairon D, Gottardi G, et al. 2009. <sup>1</sup>H NMR metabolomics can differentiate the early atherogenic effect of dairy products in hyperlipidemic hamsters. *Atherosclerosis* 206:127–133.
- McCombie G, Browning LM, Titman CM, Song M, Shokkcor J, Jebb SA, et al. 2009. Omega-3 oil intake during weight loss in obese women results in remodelling of plasma triglyceride and fatty acids. *Metabolomics* 5:363–374.
- Nicholson JK, Lindon JC. 2008. Systems biology: metabolomics. *Nature* 455:1054–1056.
- Quintás G, Portillo N, Garcia-Cañaveras JC, Castell JV, Ferrer A, Lahoz A. 2012. Chemometric approaches to improve PLS-DA model outcome for predicting human non-alcoholic fatty liver disease using UPLC-MS as a metabolic profiling tool. *Metabolomics* 8:86–98.
- Richter CA, Birnbaum LS, Farabolini F, Newbold RR, Rubin BS, Talsness CE, et al. 2007. *In vivo* effects of bisphenol A in laboratory rodent studies. *Reprod Toxicol* 24:199–224.
- Rubin BS, Lenkowski JR, Schaeberle CM, Vandenberg LN, Ronsheim PM, Soto AM. 2006. Evidence of altered brain sexual differentiation in mice exposed perinatally to low, environmentally relevant levels of bisphenol A. *Endocrinology* 147:3681–3691.
- Rubin BS, Soto AM. 2009. Bisphenol A: perinatal exposure and body weight. *Mol Cell Endocrinol* 304:55–62.
- Ryan KK, Haller AM, Sorrell JE, Woods SC, Jandacek RJ, Seeley RJ. 2010. Perinatal exposure to bisphenol-A and the development of metabolic syndrome in CD-1 mice. *Endocrinology* 151:2603–2612.
- Salian S, Doshi T, Vanage G. 2011. Perinatal exposure of rats to bisphenol A affects fertility of male offspring—an overview. *Reprod Toxicol* 31:359–362.
- Somm E, Schwitzgebel VM, Toulotte A, Cederroth CR, Combesure C, Nef S, et al. 2009. Perinatal exposure to bisphenol A alters early adipogenesis in the rat. *Environ Health Perspect* 117:1549–1555.
- Soto AM, Lin TM, Justicia H, Silvia RM, Sonnenschein C. 1992. An "in culture" bioassay to assess the estrogenicity of xenobiotics. In: *Chemically Induced Alterations in Sexual Development: the Wildlife/Human Connection* (Colborn T, Clement C, eds). Princeton, NJ:Princeton Scientific Publishing, 295–309.
- Sumner S, Snyder R, Burgess J, Myers C, Tyl R, Sloan C, et al. 2009. Metabolomics in the assessment of chemical-induced reproductive and developmental outcomes using non-invasive biological fluids: application to the study of butylbenzyl phthalate. *J Appl Toxicol* 29:703–714.
- Sun Y, Irie M, Kishikawa N, Wada M, Kuroda N, Nakashima K. 2004. Determination of bisphenol A in human breast milk by HPLC with column-switching and fluorescence detection. *Biomed Chromatogr* 18:501–507.
- Thomas P, Dong J. 2006. Binding and activation of the seven-transmembrane estrogen receptor GPR30 by environmental estrogens: a potential novel mechanism of endocrine disruption. *J Steroid Biochem Mol Biol* 102:175–179.
- U.S. Food and Drug Administration. 2008. Draft Assessment of Bisphenol A for Use in Food Contact Applications. Available: [http://www.fda.gov/ohrms/dockets/ac/08/briefing/2008-0038b1\\_01\\_02\\_fda%20bpa%20draft%20assessment.pdf](http://www.fda.gov/ohrms/dockets/ac/08/briefing/2008-0038b1_01_02_fda%20bpa%20draft%20assessment.pdf) [accessed 28 February 2013].
- Vandenberg LN, Colborn T, Hayes TB, Heindel JJ, Jacobs DR Jr,

- Lee DH, et al. 2012. Hormones and endocrine-disrupting chemicals: low-dose effects and nonmonotonic dose responses. *Endocr Rev* 33:378–455.
- Vandenberg LN, Maffini MV, Sonnenschein C, Rubin BS, Soto AM. 2009. Bisphenol-A and the great divide: a review of controversies in the field of endocrine disruption. *Endocr Rev* 30:75–95.
- vom Saal FS, Akingbemi BT, Belcher SM, Birnbaum LS, Crain DA, Eriksen M, et al. 2007. Chapel Hill bisphenol A expert panel consensus statement: integration of mechanisms, effects in animals and potential to impact human health at current levels of exposure. *Reprod Toxicol* 24:131–138.
- vom Saal FS, Nagel SC, Coe BL, Angle BM, Taylor JA. 2012. The estrogenic endocrine disrupting chemical bisphenol A (BPA) and obesity. *Mol Cell Endocrinol* 354:74–84.
- Wadia PR, Vandenberg LN, Schaeberle CM, Rubin BS, Sonnenschein C, Soto AM. 2007. Perinatal bisphenol A exposure increases estrogen sensitivity of the mammary gland in diverse mouse strains. *Environ Health Perspect* 115:592–598.
- Waters NJ, Holmes E, Waterfield CJ, Farrant RD, Nicholson JK. 2002. NMR and pattern recognition studies on liver extracts and intact livers from rats treated with  $\alpha$ -naphthylisothiocyanate. *Biochem Pharmacol* 64:67–77.
- Welshons WV, Nagel SC, vom Saal FS. 2006. Large effects from small exposures. III. Endocrine mechanisms mediating effects of bisphenol A at levels of human exposure. *Endocrinology* 147:s56–s69.
- Welshons WV, Rottinghaus GE, Nonneman DJ, Dolan-Timpe M, Ross PF. 1990. A sensitive bioassay for detection of dietary estrogens in animal feeds. *J Vet Diagn Invest* 2:268–273.
- Wold S, Antti H, Lindgren F, Öhman J. 1998. Orthogonal signal correction of near-infrared spectra. *Chemometr Intell Lab Syst* 44:175–185.
- Wozniak AL, Bulayeva NN, Watson CS. 2005. Xenoestrogens at picomolar to nanomolar concentrations trigger membrane estrogen receptor- $\alpha$ -mediated  $Ca^{2+}$  fluxes and prolactin release in GH3/B6 pituitary tumor cells. *Environ Health Perspect* 113:431–439.
- Wyss MT, Jolivet R, Buck A, Magistretti PJ, Weber B. 2011. *In vivo* evidence for lactate as a neuronal energy source. *J Neurosci* 31:7477–7485.
- Zalko D, Jacques C, Duplan H, Bruel S, Perdu E. 2011. Viable skin efficiently absorbs and metabolizes bisphenol A. *Chemosphere* 82:424–430.
- Zalko D, Soto AM, Dolo L, Dorio C, Rathahao E, Debrauwer L, et al. 2003. Biotransformations of bisphenol A in a mammalian model: answers and new questions raised by low-dose metabolic fate studies in pregnant CD1 mice. *Environ Health Perspect* 111:309–319.
- Zilberter Y, Zilberter T, Bregestovski P. 2010. Neuronal activity *in vitro* and the *in vivo* reality: the role of energy homeostasis. *Trends Pharmacol Sci* 31:394–401.