



**HAL**  
open science

# Sequence evolution and expression regulation of stress-responsive genes in natural populations of wild tomato

Iris Fischer, Kim A. Steige, Wolfgang Stephan, Mamadou Mboup

► **To cite this version:**

Iris Fischer, Kim A. Steige, Wolfgang Stephan, Mamadou Mboup. Sequence evolution and expression regulation of stress-responsive genes in natural populations of wild tomato. PLoS ONE, 2013, 8 (10), 10.1371/journal.pone.0078182 . hal-02646897

**HAL Id: hal-02646897**

**<https://hal.inrae.fr/hal-02646897>**

Submitted on 29 May 2020

**HAL** is a multi-disciplinary open access archive for the deposit and dissemination of scientific research documents, whether they are published or not. The documents may come from teaching and research institutions in France or abroad, or from public or private research centers.

L'archive ouverte pluridisciplinaire **HAL**, est destinée au dépôt et à la diffusion de documents scientifiques de niveau recherche, publiés ou non, émanant des établissements d'enseignement et de recherche français ou étrangers, des laboratoires publics ou privés.

# Sequence Evolution and Expression Regulation of Stress-Responsive Genes in Natural Populations of Wild Tomato

Iris Fischer<sup>\*a</sup>, Kim A. Steige<sup>ab</sup>, Wolfgang Stephan, Mamadou Mboup<sup>ac</sup>

Section of Evolutionary Biology, Department of Biology II, University of Munich, Planegg-Martinsried, Germany

## Abstract

The wild tomato species *Solanum chilense* and *S. peruvianum* are a valuable non-model system for studying plant adaptation since they grow in diverse environments facing many abiotic constraints. Here we investigate the sequence evolution of regulatory regions of drought and cold responsive genes and their expression regulation. The coding regions of these genes were previously shown to exhibit signatures of positive selection. Expression profiles and sequence evolution of regulatory regions of members of the *Asr* (ABA/water stress/ripening induced) gene family and the dehydrin gene *pLC30-15* were analyzed in wild tomato populations from contrasting environments. For *S. chilense*, we found that *Asr4* and *pLC30-15* appear to respond much faster to drought conditions in accessions from very dry environments than accessions from more mesic locations. Sequence analysis suggests that the promoter of *Asr2* and the downstream region of *pLC30-15* are under positive selection in some local populations of *S. chilense*. By investigating gene expression differences at the population level we provide further support of our previous conclusions that *Asr2*, *Asr4*, and *pLC30-15* are promising candidates for functional studies of adaptation. Our analysis also demonstrates the power of the candidate gene approach in evolutionary biology research and highlights the importance of wild *Solanum* species as a genetic resource for their cultivated relatives.

**Citation:** Fischer I, Steige KA, Stephan W, Mboup M (2013) Sequence Evolution and Expression Regulation of Stress-Responsive Genes in Natural Populations of Wild Tomato. PLoS ONE 8(10): e78182. doi:10.1371/journal.pone.0078182

**Editor:** I. King Jordan, Georgia Institute of Technology, United States of America

**Received:** May 13, 2013; **Accepted:** September 9, 2013; **Published:** October 18, 2013

**Copyright:** © 2013 Fischer et al. This is an open-access article distributed under the terms of the Creative Commons Attribution License, which permits unrestricted use, distribution, and reproduction in any medium, provided the original author and source are credited.

**Funding:** This work was funded by grant STE 325/13-1 from the German Research Foundation to WS and a fellowship from the Graduiertenförderung nach dem Bayerischen Eliteförderungsgesetz to IF. The funders had no role in study design, data collection and analysis, decision to publish, or preparation of the manuscript.

**Competing interests:** The authors have declared that no competing interests exist.

\* E-mail: irisfischer402@gmail.com

<sup>a</sup> Current address: INRA, UMR, 1334 AGAP, Montpellier, France

<sup>b</sup> Current address: Evolutionary Biology Centre, Uppsala University, Uppsala, Sweden

<sup>c</sup> Current address: Department of Plant Sciences, University of Oxford, Oxford, United Kingdom

## Introduction

Numerous efforts have been made in the last decades to understand local adaptation. This phenomenon is defined as the movement of a population towards a phenotype that leads to the highest fitness in a particular environment [1]. As protein divergence alone often cannot explain the phenotypic differences observed between populations/species, gene expression regulation has been suggested to play a key role for many cases of adaptation [2–4]. Modulation of gene expression is crucial for the survival of organisms as environmental changes require fast and specific responses. Experimental evolution studies in microorganisms revealed fast expression divergence between strains of *Saccharomyces cerevisiae* (yeast) [5] and *Escherichia coli* [6] grown in glucose-limited media. In plants, regulatory changes between domesticated crop species and their wild relatives as well as their role in

adaptation have been described in *Zea mays* (maize) [7,8] and *Oryza sativa* (rice) [9]. Therefore, one way to investigate local adaptation is to study the expression and regulation of genes that provide a higher fitness under stress conditions. Whole transcriptome analysis has largely been done using microarrays for investigating expression differences in natural populations of model species such as *Drosophila melanogaster* [10,11], to study host shifts in *D. mojavensis* [12] or to analyze invasive plant species such as *Ambrosia artemisiifolia* (common ragweed) [13] and *Cirsium arvense* (Canada thistle) [14]. Recently, sequencing of whole transcriptomes/exomes additionally allowed for large-scale gene expression analysis in different populations or cultivars, e.g. in *D. melanogaster* [15], *D. mojavensis* [16], or *Citrullus lanatus* (watermelon) [17]. However, expression differences have also been analyzed in more detail for particular candidate genes, e.g. cold responsive genes in wild tomato (*Solanum* sp.) [18] or genes involved in

root architecture in monkey-flower (*Mimulus guttatus*) [19]. Another question that remains to be answered is to which degree regulatory divergence is adaptive [20]. Most analyses are still focused on the evolution of coding sequences, but examples attributing adaptation to regulatory changes have increased over the last few years [2,21,22].

Terrestrial plants are usually sessile during their life cycle and drought and cold stress are the major abiotic constraints they are facing. Both types of stress have adverse effects on plant growth and crop production [23]. Drought and cold stress lead to accumulation of the phytohormone abscisic acid (ABA), and it has been shown that application of ABA mimics stress conditions [24]. Therefore late embryogenesis abundant (LEA) proteins, which are induced by ABA and were shown to accumulate in vegetative organs during dehydration and low temperature stress [25,26], are good candidates to study adaptation. The LEA proteins are subdivided into seven groups based on their amino acid sequences as well as structural and functional features (e.g. size, hydrophilicity, or glycin content) [27]. In this study we analyze two types of LEA proteins: PLC30-15 [28] encoded by a drought and ABA-inducible dehydrin gene belonging to Group 2, and the ASRs, which belong to Group 7 [27]. Although the functional role of dehydrins still remains speculative, some observations suggest their involvement in abiotic stress tolerance. In *Solanum tuberosum* (potato) and *S. sogarandinum*, dehydrins are drought induced in apical parts and show an increased expression level correlated with cold tolerance in tubers and stems [29]. A previous study of the *pLC30-15* dehydrin revealed that diversifying selection acted on its coding region in a wild tomato population from a dry environment [30]. The other genes used in this study are members of the ABA- and abiotic stress-induced *Asr* (ABA/water stress/ripening induced) gene family [31,32]. ASRs have several functions that help the plant dealing with stress: as monomers with a chaperon function in the cytoplasm [33] or as homo- and heterodimers with DREB (drought response element binding) proteins [34,35] with DNA-binding activity in the nucleus [36]. They also serve as transcription factors associated with the modulation of sugar transport activity [37-39]. Previous studies showed that over-expressed *Asr* genes in transgenic plants lead to higher drought and salt tolerance [40-42]. Using semi-quantitative RT-PCR in cultivated tomato (*S. lycopersicum*), it was demonstrated that *Asr* genes show differences in expression depending on the gene copy or the organ [43]. Analyzing different accessions of wild tomato using Northern Blots, it was shown that *Asr1* and *Asr4* are up-regulated in leaves of plants from humid environments after drought stress [44]. Other studies carried out in wild tomatoes revealed patterns consistent with local adaptation at *Asr* genes in populations that dwell in dry environments [45-47]. These findings make *pLC30-15* and *Asr* genes interesting candidates for studying local adaptation at the gene expression level.

To understand their role in local adaptation, plants from their native environments are required [48]. For model organisms (e.g. *A. thaliana*, *O. sativa*, or *Z. mays*), an environmental context is not clear and/or cultivation caused reduced diversity due to bottlenecks and artificial selection. Investigating non-

model organisms becomes more and more popular, but as they are mostly lacking sequenced genomes it is reasonable to study wild relatives of model organisms [49]. This has successfully been done in relatives of e.g. *A. thaliana* [50-53], *Helianthus annuus* (sunflower) [54,55], *O. sativa* [56], and *S. lycopersicum* [57]. The availability of cultivated tomato genomic resources, the recent divergence of the *Solanum* species, and their clear phenotypic distinction [58] make tomato species a popular plant system that is frequently used to study evolution [57,59]. Most *Solanum* sect. *Lycopersicon* species are native to western South America (Ecuador, Peru, and Chile), along the western and eastern Andean slopes [60]. This study focuses on two recently diverged wild tomato species that show differences in their ecological habitats and features: *Solanum chilense* and *S. peruvianum*. *S. chilense* is distributed from southern Peru to northern Chile where it inhabits arid plains and deserts [58]. It is known to be drought tolerant and can dwell in hyper-arid areas [57,58,61]. Furthermore, it shows a broad range in elevation from sea level up to 3,500 m and therefore experiences large temperature gradients during the year [62]. *S. peruvianum* is distributed from central Peru to northern Chile and inhabits a variety of habitats, from coastal deserts to river valleys [58].

At the level of populations, local adaptation can best be studied for organisms with restricted migration [63]. Using the coding sequences, previous population genetic analyses have provided evidence for local adaptation at *Asr2*, *Asr4*, and *pLC30-15* [30,46,47]. Here we sequenced the regulatory regions of these genes from the same populations we had analyzed previously [30,47]. Therefore, we could investigate the evolutionary forces shaping the regulatory regions in direct comparison with the corresponding coding parts of the genes. In addition, we could identify conserved *cis*-acting elements. We also analyzed the expression pattern of *Asr1*, *Asr2*, *Asr4*, and *pLC30-15* in *S. chilense* and *S. peruvianum* accessions that were sampled in close proximity to the populations used for the sequence analysis. We were able to determine differences in gene expression profiles (i.e. intensity and speed) and differences depending on the type of stress or the gene investigated.

## Materials and Methods

### Sequence analysis: Plant material and sequencing

We sequenced the promoter region of *Asr2* (*pAsr2*), *Asr4* (*pAsr4*), *pLC30-15* (*5'pLC*), and also the downstream region of *pLC30-15* (*3'pLC*). All genes are located on chromosome 4; genomic locations according to the SOL Genomics Network (<http://solgenomics.net/>) are as follows. *Asr2*: SL2.40ch04:56141779...56142589; *Asr4*: SL2.40ch04:56178656...56180338; *pLC30-15*: SL2.40ch04:63550865...63552237). Two populations from climatically different environments were sampled for each species (Tacna and Quicacha for *S. chilense*; Tarapaca and Canta for *S. peruvianum*). Five to seven individuals of each population were analyzed (Table S1 in File S1). A detailed description of these samples is provided in [47,59,64-66]. The *Tarapaca* sample was obtained from the Tomato Genetics

Resource Center (TGRC) at the UC Davis (accession number LA2744). The other populations were sampled by T. Städler and T. Marczewski in May 2004 [66,67]. Relevant permits for the collection and import of samples from the Peruvian and Chilean Government were handled by T. Städler and T. Marczewski (as published in [66,67]) or the TGRC. *Solanum ochranthum* (TGRC accession LA2682) was used as outgroup. DNA extraction, PCR amplification, cloning, and sequencing were performed as described in [47]. All primers used in this project can be found in (Tables S2 and S3 in File S1). Sequence alignments are provided in Files S2-S5. Sequence data from this article have been deposited in the EMBL/GenBank Data Libraries under accession numbers HE612885-HE613033.

### Nucleotide diversity analysis, neutrality tests, and haplotype diversity

We measured nucleotide diversity using Watterson's  $\theta_w$  and Tajima's  $\pi$  implemented in the DnaSP v5 software [68].  $\theta_w$  is based on the number of segregating sites [69], and  $\pi$  on the average number of pairwise nucleotide differences among sequences in a sample [70]. We tested for deviations from the standard neutral model using Tajima's  $D$  statistic and Fu & Li's  $D$  in DnaSP. A significantly negative value of Tajima's  $D$  indicates an excess of rare variants as expected under directional selection or population size expansion [71]. A significantly positive Tajima's  $D$  value indicates an excess of intermediate-frequency variants as expected under balancing selection or in structured populations [71]. The same is true for Fu and Li's  $D$  statistics [72]. Fay & Wu's  $H$  was also calculated. A negative Fay and Wu's  $H$  indicates an over-representation of high-frequency derived polymorphisms, which is expected under positive selection [73]. A positive Fay and Wu's  $H$  indicates an over-representation of intermediate-frequency derived polymorphisms, which is the case if balancing selection was acting [73]. The haplotype test of Depaulis & Veuille [74] was used to assess haplotype diversity ( $H_d$ ). All neutrality tests were performed using the option Number of Segregating Sites in DnaSP.

### Motif search in non-coding regions

Motifs in the promoter region were searched using the program PlantCARE [75]. This program contains a database of *cis*-acting regulatory elements and allows for *in silico* analysis of promoter sequences. We limited our search to stress- and hormone-related motifs in conserved regions to provide more information on the kind of stresses that might trigger a response of those genes. We do not describe general transcription factor binding sites like the TATA box.

### Gene expression analysis: Plant material, cultivation and replication

Due to restrictions by the Peruvian government only leaf material was sampled from populations used in the previous sequence analyses [30,47,59,66,67] and the promoter sequence analysis in this work. To perform the gene expression experiments, seeds of six accessions in close proximity to those previously sampled populations were

obtained from the TGRC (Table 1). We tested five populations for drought stress and six populations for cold stress (Table 1). As these wild tomato species are outcrossing, we performed cuttings to obtain genetically identical replicates. Tomato seeds of the motherplants were treated with 2.7% NaOCl for 20 minutes to foster germination, and then kept on moistened filter paper at room temperature in the dark until they germinated. The tomato seedlings were then transferred to soil and put into the climate chamber at 22°C with a 16h/8h day/night cycle and 70% humidity. The motherplants were grown until they could provide material for 20-25 cuttings (approximately three months). The cuttings were treated with the Neudofix rooting enhancer (Neudorff, Emmerthal, Germany) and transferred to pots containing soil and vermiculite on top (to ensure nutrition and ventilation). The cuttings were grown for five weeks under the same conditions as the motherplants until they grew roots and three fresh leaves. The *Asr* genes and *pLC30-15* were also sequenced in the motherplants to determine their haplotypes as described above. The experiment was designed as follows. Gene expression was measured at five time points after drought and cold stresses for five and six populations, respectively (Table 1). For each population, three biological and three technical replicates were used (for all time points).

### Stress treatment, RNA extraction and cDNA synthesis

Drought stress was applied by removing the tomato plants from the pots, carefully rinsing and drying their roots and transferring them into a climate chamber at 22°C (according to [43]). For the cold stress, the plants were transferred to a climate chamber at 4°C. Leaves were immediately frozen in liquid nitrogen at five timepoints: unstressed plants, one hour, three hours, six hours, and 24 hours after stress application. Total RNA was isolated using the RNeasy Plant Mini Kit (Qiagen GmbH, Hilden, Germany). DNA was removed using an on-column DNaseI digestion protocol. The RNA integrity was assessed by gel electrophoresis. A NanoDrop 1000 Spectrophotometer (PepLab, Erlangen, Germany) was used to quantify the RNA and to assess its quality. Only samples with  $A_{260}/A_{280}$  and  $A_{260}/A_{230}$  values between 1.9 and 2.1 were used for further experiments. cDNA was synthesized from 1  $\mu$ g total RNA using SuperScriptIII reverse transcriptase and RNase inhibitor RNaseOUT (both from Invitrogen, Carlsbad, CA, USA) using oligo(dT)<sub>20</sub> primers. The cDNA was treated with RNaseH (New England Biolabs, Ipswich, MA, USA) to remove remaining RNA.

### Quantitative real-time PCR

Primers for the quantitative real-time PCR (in the following referred to as qPCR) were designed using NetPrimer (<http://www.primierbiosoft.com/netprimer>) and PrimerBLAST (<http://www.ncbi.nlm.nih.gov>). As *Asr3* and *Asr5* cannot be distinguished in their coding region [47] they were excluded from this study. qPCR was carried out using iQ SYBR green on a CFX thermocycler (both BioRad, Hercules, CA, USA). Expression of the target genes was normalized by two constitutively expressed reference genes: *CT189* coding for a 40S ribosomal protein [65] and *TIP4I* which was shown to be a very stable reference gene in tomato [76]. As the efficiency was

**Table 1.** Location and habitat characteristics of the accessions used for the expression analysis.

Accession <sup>a</sup>	Species <sup>b</sup>	Nearby population <sup>c</sup>	Collection site <sup>b</sup>	Latitude / Longitude <sup>b</sup>	Altitude <sup>b</sup> [m]	Annual Precipitation <sup>d</sup> [mm]	Precipitation wettest month <sup>d</sup> [mm]	Mean annual temperature <sup>d</sup> [°C]	Stresses tested
LA1938 (QUI)	<i>S. chilense</i>	Quicacha	Quebrada Salsipuedes, Arequipa, Peru	15°41' S / 73°50' W	1400	61	31	15.5	drought + cold
LA1967 (TAC1)	<i>S. chilense</i>	Tacna	Pachia, Tacna, Peru	17°55' S / 70°09' W	1000	15	5	16.7	drought + cold
LA1969 (TAC2)	<i>S. chilense</i>	Tacna	Estique Pampa, Tacna, Peru	17°32' S / 70°02' W	3250	15	5	16.7	cold
LA2744 (TAR1)	<i>S. peruvianum</i>	Tarapaca	Sobraya, Tarapaca, Chile	18°33' S / 70°09' W	400	5	1	17.9	drought + cold
LA2745 (TAR2)	<i>S. peruvianum</i>	Tarapaca	Pan de Azucar, Tarapaca, Chile	18°35' S / 69°56' W	600	5	1	17.9	drought + cold
LA3636 (CAN)	<i>S. peruvianum</i>	Canta	Coaylo, Lima, Peru	12°41' S / 76°24' W	No data available	265	77	14.2	drought + cold

a. Tomato Genetics Resource Center (TGRRC) accession number

b. According to TGRRC database

c. Nearby populations sampled by T. Städler and T. Marczewski, 2004

d. Data extracted from WorldClim database ([www.worldclim.org](http://www.worldclim.org)); precipitation driest month is always 0 mm  
doi: 10.1371/journal.pone.0078182.t001

close to 100% for all runs we applied the  $2^{-\Delta\Delta C_q}$  method [77] to derive the relative expression quantity from the measured  $C_q$ -values. Quality control, reference gene stability, transformation to relative quantity, and normalization was carried out using the program qbase<sup>PLUS</sup> [78]. We performed the qPCR for one gene with all populations and timepoints in one run to rule out inter-run variation. To make the results between the different genes comparable, we performed an inter-run calibration in qbase<sup>PLUS</sup>. As this left us with more than one “true” timepoint 0 (= unstressed plants) for each gene we chose to display the results relative to the average of the whole run. We used the two-sample Wilcoxon (Mann-Whitney-*U*) test to determine whether differences in relative expression between stressed and unstressed plants were significant [79]. Importantly, we only compare timepoints within populations to make inferences on the time of gene up-regulation and the peak of expression. As we observe differences in relative expression between the populations at timepoint 0, we do not make comparisons between populations at the same timepoint as this could be misleading.

## Results

### Incomplete selective sweep in *Asr2* promoter region in the Quicacha population

We sequenced ~1,500 bp upstream of *Asr2*, *Asr4*, *pLC30-15* as this region should contain most *cis*-regulatory regions (i.e. transcription factor binding sites). Additionally, we sequenced the downstream region of *pLC30-15* (~2,300 bp) to determine how far the signature of positive selection at this gene found by [30] extends. However, we cannot rule out other *cis*- or trans-regulatory regions. We wanted to investigate the evolutionary forces acting on regulatory regions of genes involved in stress response. *pAsr2* shows a low nucleotide diversity, especially at Quicacha, compared to the *Asr2* coding region (Table 2, Figure S1a in File S1). Haplotype diversity is also very low in the Quicacha population (Table 3) and Tajima's *D* and Fu and Li's *D* are significantly negative (Table 4, Figure S1b in File S1). Indeed, we found only two *pAsr2* haplotypes at Quicacha that were rather similar to each other, where the minor allele occurred only once (Figure S3 in File S1). This indicates that positive directional selection has been acting in this population at *pAsr2*, causing an incomplete selective sweep [66,80].

### The evolution of the *Asr4* and the *pLC30-15* regulatory regions

Compared to the *Asr4* coding region, where evidence for local adaptation has been shown in a population from a dry environment [47], nucleotide diversity is higher upstream of the gene (Table 2). Additionally, the low haplotype diversity observed at *Asr4* in the Quicacha population increases at *pAsr4* to almost 1 (Table 3), and no deviation from neutrality can be observed (Table 4). This indicates that the forces acting on the *Asr4* gene (directional selection) are weaker in the promoter region. The relatively low level of haplotype diversity detected at *pLC30-15* in Quicacha can also be found at *5'pLC* (Table 3, Figure S4 in File S1). Additionally, Fay and Wu's *H* becomes very negative in both Quicacha and Tacna (Table 4),

**Table 2.** Nucleotide diversity of *pAsr2*, *pAsr4*, *5'pLC*, *3'pLC*, and their corresponding genes.

$\pi$	<i>pAsr2</i>	<i>Asr2<sup>a</sup></i>	<i>pAsr4</i>	<i>Asr4<sup>a</sup></i>	<i>5'pLC</i>	<i>pLC<sup>b</sup></i>	<i>3'pLC</i>
Quicacha	0.004	0.016	0.022	0.009	0.030	0.014	0.023
Tacna	0.015	0.020	0.026	0.015	0.028	0.012	0.016
Canta	0.016	0.020	0.032	0.019	0.044	0.016	0.027
<i>Tarapaca</i>	0.015	0.022	0.031	0.021	0.043	0.012	0.022
$\theta_W$							
Quicacha	0.006	0.014	0.021	0.011	0.026	0.010	0.023
Tacna	0.013	0.022	0.026	0.022	0.034	0.013	0.017
Canta	0.020	0.020	0.035	0.021	0.044	0.016	0.031
<i>Tarapaca</i>	0.018	0.021	0.030	0.020	0.041	0.012	0.023

a. From [47]

b. From [30]

doi: 10.1371/journal.pone.0078182.t002

**Table 3.** Haplotype diversity of *pAsr2*, *pAsr4*, *5'pLC*, *3'pLC*, and their corresponding genes.

$H_d$	<i>pAsr2</i>	<i>Asr2<sup>a</sup></i>	<i>pAsr4</i>	<i>Asr4<sup>a</sup></i>	<i>5'pLC</i>	<i>pLC<sup>b</sup></i>	<i>3'pLC</i>
Quicacha	0.286	0.800	0.933	0.600	0.667	0.711	0.889
Tacna	0.933	0.978	0.982	0.982	1.000	0.978	0.982
Canta	0.945	0.933	1.000	0.956	1.000	0.978	0.972
<i>Tarapaca</i>	0.964	0.956	0.905	0.933	0.889	0.822	0.889

a. From [47]

b. From [30]

doi: 10.1371/journal.pone.0078182.t003

**Table 4.** Results of the neutrality tests for *pAsr2*, *pAsr4*, *5'pLC*, *3'pLC*, and their corresponding genes.

Tajima's <i>D</i>	<i>pAsr2<sup>c</sup></i>	<i>Asr2<sup>a</sup></i>	<i>pAsr4</i>	<i>Asr4<sup>a</sup></i>	<i>5'pLC</i>	<i>pLC<sup>b</sup></i>	<i>3'pLC</i>
Quicacha	<b>-1.688*</b>	0.602	0.356	-0.511	0.887	<b>2.342*</b>	0.022
Tacna	1.122	-0.372	0.078	-1.429	-0.811	-0.358	-0.499
Canta	-0.936	-0.121	-0.432	-0.548	0.008	-0.339	-0.700
<i>Tarapaca</i>	-0.783	0.356	0.170	0.029	0.137	0.010	-0.144
Fu and Li's <i>D</i>							
Quicacha	<b>-1.791**</b>	-0.121	0.883	0.382	<b>1.853**</b>	<b>1.587**</b>	-0.432
Tacna	0.661	0.031	-0.230	<b>-2.326*</b>	-1.220	-0.384	0.281
Canta	-1.423	-0.590	-1.179	-0.982	-0.916	-0.673	-1.497
<i>Tarapaca</i>	-0.784	0.225	-0.214	-0.223	0.180	0.119	-0.401
Fay and Wu's <i>H</i>							
Quicacha	NA	-0.927	-3.556	-8.709	-9.190	-1.067	-2.667
Tacna	NA	5.626	3.200	-5.127	-7.727	1.511	-28.673
Canta	NA	0.444	3.778	1.867	7.911	0.978	8.806
<i>Tarapaca</i>	NA	0.000	5.143	0.889	-3.167	2.311	1.511

a. From [47]

b. From [30]

c. No outgroup available. Fu and Li's *D*\* without outgroup was calculated instead.

NA Not applicable

\*  $P < 0.05$ , \*\*  $P < 0.01$  (significant results are in bold)

doi: 10.1371/journal.pone.0078182.t004

indicating positive (diversifying) selection. Nucleotide diversity is generally higher at *3'pLC* than at the *pLC30-15* gene except in the Tacna population (Table 2, Figure S2a in File S1). In addition, Fay and Wu's *H* becomes extremely negative at the downstream region of the *pLC30-15* gene, indicating positive selection (Table 4, Figure S2b in File S1).

**Different types of motifs in the regulatory regions of *Asr2*, *Asr4* and *pLC30-15***

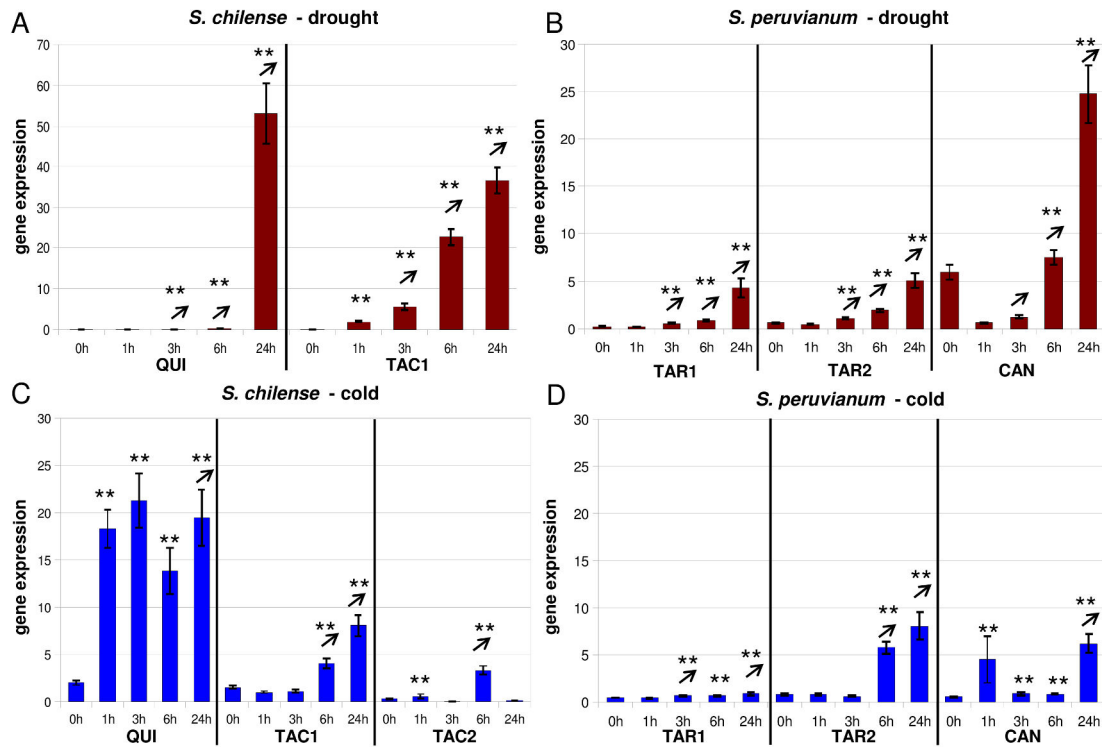
We analyzed the regulatory regions of *Asr2*, *Asr4*, and *pLC30-15* *in silico* to identify *cis*-acting elements (short motifs of 4-10 bases). Here we describe only those motifs related to hormone and stress response, and motifs that lie in conserved regions (i.e. without polymorphism) in the alignment of all sequences of both species (see Table S4 in File S1 for additional information of the described motifs). At *pAsr2* we detected a motif conserved in both species involved in salicylic acid responsiveness (TCA-element). We also discovered one motif conserved in *S. chilense* involved in ethylene (ERE). This motif (conserved in *S. peruvianum*) as well as an abscisic acid responsive element (ABRE) was also found at *pAsr4*. In addition, *pAsr4* contains a conserved auxin responsive element (Aux-RR-core). At *5'pLC* we found five conserved ABRE motifs and a motif involved in methyl jasmonate responsiveness (CGTCA-motif); at *3'pLC* conserved ABRE and CGTCA-motifs were detected as well as an AuxRR-core.

Conserved stress-related regulatory elements at *pAsr2* are involved in anaerobic induction (ARE), drought responsiveness (MBS), and general stress and defense response (TC-rich repeats). At *pAsr4* a conserved stress related motif is ARE. TC-rich repeats and MBS motifs are conserved at *5'pLC* and *3'pLC*. *3'pLC* also contains motifs involved in low-temperature responsiveness (LTR) and heat stress responsiveness (HSE).

**Expression patterns of *Asr1* and *Asr2***

We analyzed the expression patterns of *Asr1*, *Asr2*, *Asr4*, and *pLC30-15* in different populations using a time-course experiment after exposing wild tomato plants to cold and drought stress. In general, all genes appear to be more strongly induced in *S. chilense* than in *S. peruvianum* and respond more strongly to water deficit than to cold stress (Figures 1-4). After application of drought stress, *Asr1* is induced after 1-3h in all *S. chilense* and *S. peruvianum* accessions (Figure 1a+b). After cold stress, *Asr1* is induced after 1-6h but at a relatively low level in all *S. chilense* and *S. peruvianum* accessions (Figure 1c+d).

Relative *Asr2* expression is generally quite low compared to the other genes studied here. When applying drought stress to *S. chilense* populations, *Asr2* is significantly up-regulated after 1h in Tacna and 6h in Quicacha (Figure 2a). In *S. peruvianum*, we observe slightly different *Asr2* expression patterns in accessions from the same environment: transcription is induced after 1h in one *Tarapaca* accession (LA2744) and only after 24h in the other *Tarapaca* accession (LA2745) and Canta (Figure 2b). After application of cold stress in *S. chilense*, *Asr2* is significantly up-regulated after 1h in Quicacha and the Tacna accession from a high altitude (LA1969; 3,250m) or after 3h in the Tacna accession from a lower altitude (LA1967; Figure 2c).



**Figure 1. Gene expression of *Asr1* after application of drought and cold stress.** Expression is displayed relative to the average of the whole qPCR run in unstressed plants, 1h, 3h, 6h, and 24h after stress application. (A) The following accessions of *S. chilense* were measured after drought stress (red bars): LA1938 (QUI) from a dry environment and LA1967 (TAC) from a hyperarid area. (C) The following accessions of *S. chilense* were measured after cold stress (blue bars): LA1938 (QUI) from a dry environment and LA1967 (TAC1) from a hyperarid area and LA1969 (TAC2) from a very dry environment and high altitude. The following accessions of *S. peruvianum* were measured after (B) drought (red bars) and (D) cold stress (blue bars): LA2744 (TAR1) and LA2745 (TAR2) from a dry environment and LA3636 (CAN) from a humid environment. Vertical lines at bar charts indicate the standard error, asterisks above bar charts indicate significant over-expression compared to the unstressed control ( $P < 0.05$ ;  $^{**}P < 0.01$ ), arrows above bar charts indicate significant over-expression ( $P < 0.01$ ) compared to the previous timepoint – meaning the transcript level is increasing.

doi: 10.1371/journal.pone.0078182.g001

In *S. peruvianum*, LA2745 shows the highest and fastest (1h) induction of *Asr2* (Figure 2d). LA2744 and the Canta accession are induced more slowly (3h and 24h, respectively; Figure 2d).

**Faster induction of *Asr4* transcription in a population from a dry environment**

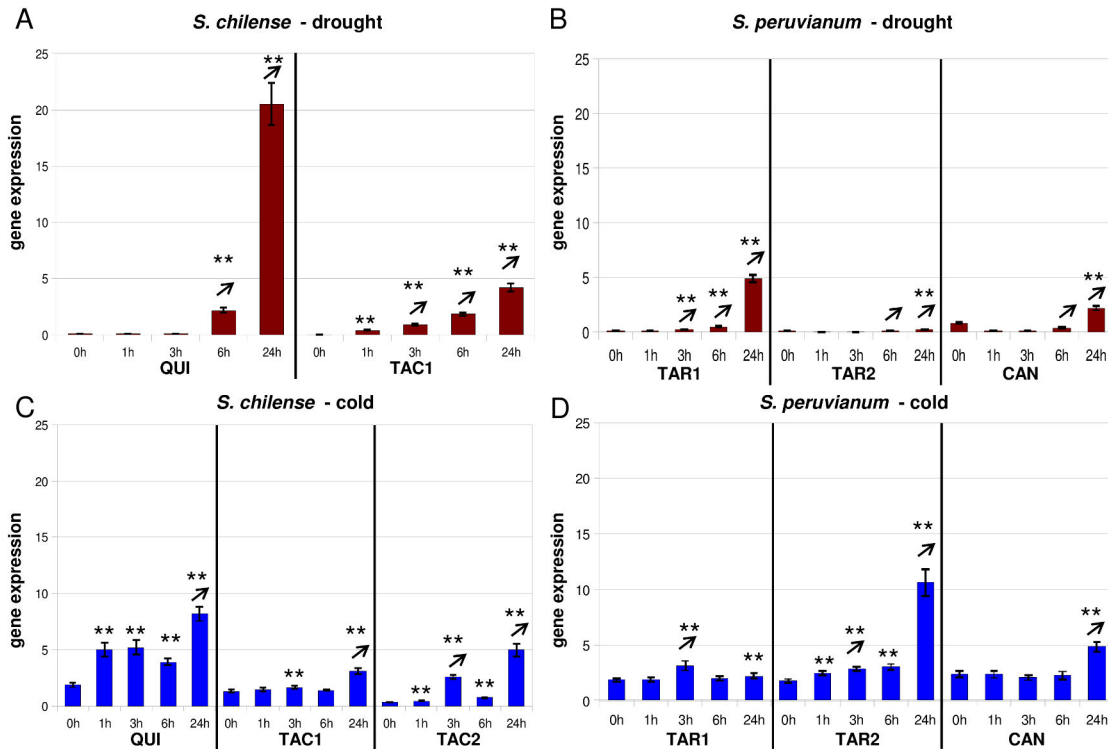
In the Quicacha accession of *S. chilense*, *Asr4* is drought induced after 3h and very highly expressed after 24h (Figure 3a). In the Tacna accession from a very dry environment, on the other hand, *Asr4* is already significantly up-regulated after 1h and has its expression peak after 3h (Figure 3a). Based on DNA sequence variation data this population was found to undergo local adaptation and to exhibit signatures of positive selection at the *Asr4* locus [47]. The Tacna accession used in the expression experiments is homozygous for the favored predominant haplotype described in [47]. In *S. peruvianum*, the two *Tarapaca* accessions (both from a similar environment) differ in their expression patterns. In the accession LA2745,

*Asr4* is drought induced after 1h and reaches its maximal expression level after 6h (Figure 3b). LA2744, on the other hand, shows a constant increase of *Asr4* transcripts until timepoint 24h (Figure 3b). The Canta accession displays a significant over-expression of *Asr4* after 6h and 24h (Figure 3b).

*Asr4* induction after cold stress is much lower. All *S. chilense* accessions show a fast induction (1h) of *Asr4* transcripts (Figure 3c). However, the transcript level seems to be higher in the Tacna accession from a high altitude (LA1969) compared to the one from a lower altitude (LA1967; <1,000m) and the accession from Quicacha. In *S. peruvianum*, *Asr4* induction is much slower: after 3h in Canta and 6h in *Tarapaca* (Figure 3d).

**High expression levels of *pLC30-15* after drought stress**

After application of drought stress, *pLC30-15* is induced fast (after 1h in all accessions) and reaches its peak of transcription



**Figure 2. Gene expression of *Asr2* after application of drought and cold stress.** (for explanation see Figure 1).

doi: 10.1371/journal.pone.0078182.g002

after 3–6h – except for the Quicacha and Canta accessions where the expression level increases until 24h (Figure 4a,b). Transcript levels appear to be higher in *S. chilense* than in *S. peruvianum* after drought stress, but to a lesser degree than for the *Asr* genes (Figure 4a,b). After cold stress, *pLC30-15* has a lower transcript level in both species (Figure 4c,d). *pLC30-15* is significantly up-regulated after 1h in all *S. chilense* accessions and expression keeps increasing until 24h (Figure 4c). In *S. peruvianum*, we can again observe differences in expression in accessions from the same environment: *pLC30-15* is induced after 1h in LA2744 but no induction can be detected in accession LA2745 (both *Tarapaca* – Figure 4d). In Canta, *pLC30-15* is induced after 3h and increases until 24h (Figure 4d).

## Discussion

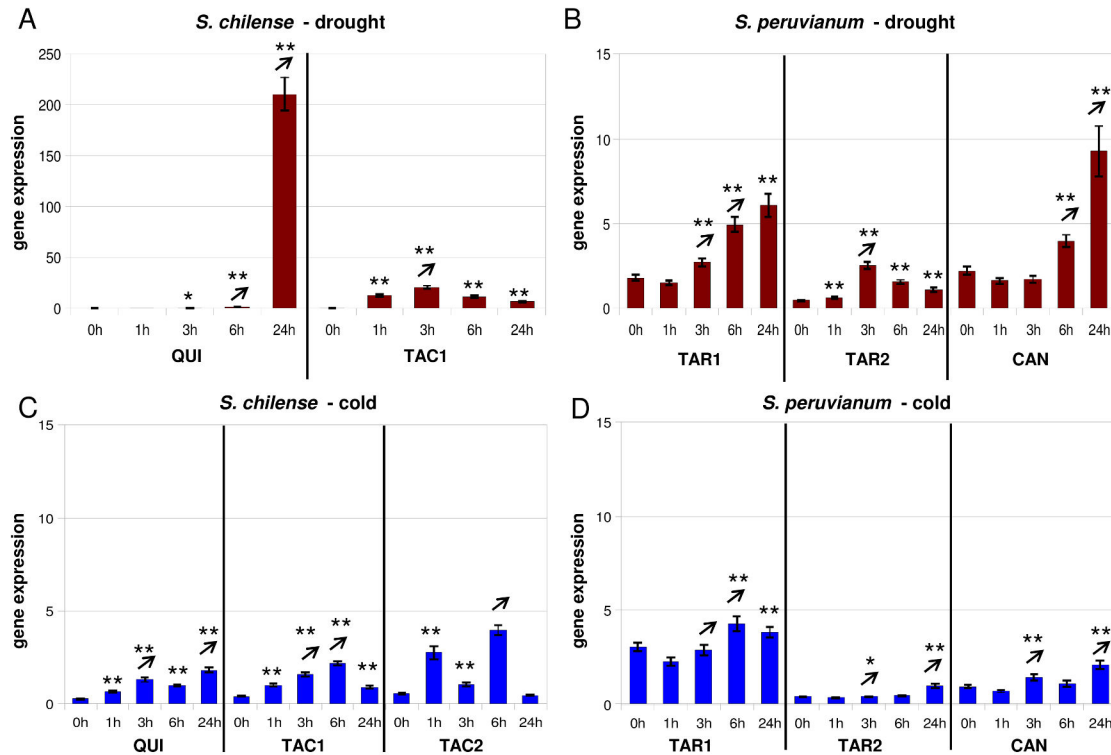
We analyzed the regulatory regions of stress-responsive genes in wild tomato populations from different environments and compared them to their corresponding coding regions, which were previously studied [30,47]. Our most salient observations are as follows. Sequence analyses suggest that the *Asr2* promoter region and the downstream region of *pLC15-30* in *S. chilense* populations from dry environments have been under positive selection. The gene expression experiments suggest that, in general, the genes show a higher induction in *S. chilense* than in *S. peruvianum* and respond

more strongly to water deficit than to cold stress. In particular, we found that *pLC30-15* and *Asr4* are highly drought induced in the *S. chilense* population from Tacna (a very dry environment). As these genes also exhibit signatures of positive selection in the coding region [30,47] they may therefore be of potential interest for further functional studies of adaptation. Since we did not perform statistical analysis between populations, however, these observed trends are suggestive and further experiments are needed to verify them. In the following, we discuss these findings in more detail.

## Sequence variation of regulatory regions of stress-responsive genes

Studying *cis*-regulatory elements has been of great interest over the last years as it has been suggested that phenotypic changes also result from variation in these regions rather than in coding regions [2,81,82]. A relatively straightforward way to investigate this is to first analyze sequence variation and search for specific motifs in promoter regions [83]. When analyzing the *Asr2* promoter region, it is quite remarkable how low nucleotide diversity is especially in the Quicacha population. The observed polymorphism pattern suggests that a (incomplete) selective sweep eliminated nucleotide diversity at *pAsr2* and increased the frequency of one favored haplotype. This may indicate an important function of this region. Similarly, the downstream region of *pLC30-15* shows low nucleotide diversity and patterns consistent with positive





**Figure 3. Gene expression of *Asr4* after application of drought and cold stress.** (for explanation see Figure 1).

doi: 10.1371/journal.pone.0078182.g003

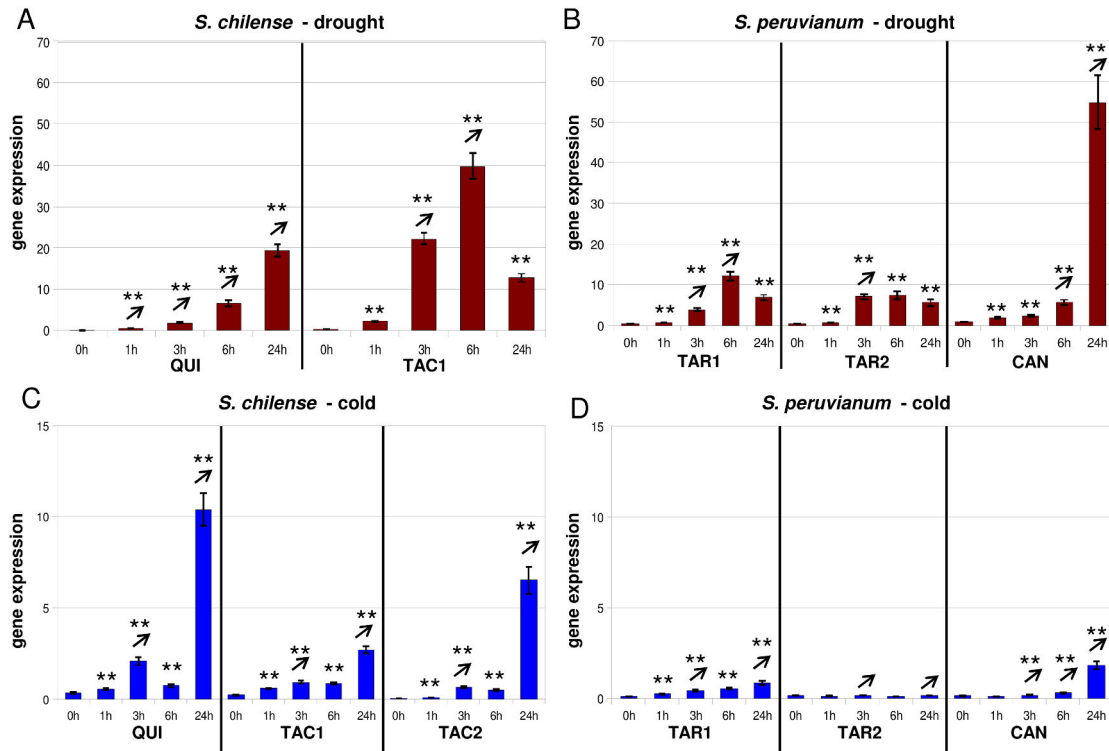
selection in the Tacna population, which may also be functionally significant. Unlike *pAsr2* and *3'pLC*, *pAsr4* and *5'pLC* are more polymorphic than their corresponding coding regions. The patterns consistent with local adaptation at *Asr4* in the Tacna population described before [47] disappear at *pAsr4* and neutrality tests show no deviation from a standard neutral scenario. Also, the haplotype structure observed in Quicacha [47] is not present at *pAsr4*. This shows that the evidence for local adaptation described before is limited to the *Asr4* coding regions. On the other hand, the haplotype structure and patterns of positive selection at the *pLC30-15* locus described in [30] in Quicacha remain at *5'pLC*, suggesting that the acting selective forces are not limited to the gene.

Although we found evidence for positive selection in the coding regions of *Asr2*, *Asr4* and *pLC30-15* and also in some of their regulatory regions, it is difficult to establish a relationship between the sequence evolution of the genes and their expression profiles. Except for the possible effects of trans-regulatory elements, reasons for this may be that more samples from different environments, larger sample sizes and more genes need to be investigated. Nonetheless, our approach may prove useful as an initial step towards determining whether these genes are involved in the adaptation of wild tomatoes to abiotic factors such as drought and cold. Indeed, an encouraging sign might be that our motif scan analysis shows conservative regulatory elements that are involved in drought, cold, heat stress and general stress

responses at *pAsr2*, *5'pLC* and *3'pLC*. Further evidence about the possible relationship between sequence and gene expression variation is discussed below, after reviewing the results from related studies.

#### Environment-specific gene expression regulation of stress-responsive genes and its possible relationship to sequence variation

*Asr* genes have already been described to be induced by desiccation in several plant species, e.g. *Solanum chacoense* (wild potato) [84], *Pinus taeda* (loblolly pine) [85], *Lilium longifolium* (lily) [86], *Ginkgo biloba* [87], and *O. sativa* [88], but also by cold in *S. tuberosum* [89]. *Asr* genes have been shown to be very variable in their expression kinetics. They show differences in organ-specific expression [43,85] and different patterns depending on the gene copy [44,88] and applied stress [87,89]. Philippe et al. [88] even demonstrate differential expression patterns of rice *Asr* genes depending on the cultivar. Such variability in gene expression between accessions was also described for cold-responsive genes in wild tomato [18]. Similarly, although they share the same environment, the *S. peruvianum* accessions from Tarapaca (LA2744 and LA2745) seem to show different expression patterns for *Asr2*, *Asr4* and *pLC30-15*. Therefore, differences in gene expression may not necessarily be adaptive. It has been demonstrated that stress-related genes have a more variable



**Figure 4. Gene expression of *pLC30-15* after application of drought and cold stress.** (for explanation see Figure 1).  
doi: 10.1371/journal.pone.0078182.g004

expression than housekeeping genes [90,91] and a higher expression divergence of duplicated genes in *A. thaliana* [92]. In tomato, we detected different expression patterns between populations from similar environments only if the genes were in general lowly expressed. This is in accordance with the findings of Carey et al. [93], who found that transcriptional noise decreases as the expression level increases.

Although we cannot establish a clear connection between gene expression variation and patterns of diversity in the regulatory regions or the coding regions analyzed in previous studies [30,45-47], we discovered interesting trends. First, we suggest that the *Asr* genes and *pLC30-15* are more strongly induced by water deficit than by cold, indicating that they play a more important role in drought response than in cold response in wild tomato species. In accordance with the results by Carey et al. [93] discussed above, the expression patterns of the *Asr* genes and *pLC30-15* appear to be more noisy after cold stress. Second, *Asr1* seems to show a similar expression pattern after drought stress in all *S. chilense* and *S. peruvianum* populations, i.e. induction occurs after 1-3h and relative expression increases until 24h, while the expression level is lower and more noisy after cold stress. *Asr1* homologs have been shown to be conserved in wild tomato and other plant species and seem to act as housekeeping genes [44,47]. Our results suggest a concordant conserved expression pattern, highlighting the importance of *Asr1* for basic functions in the plants. Third, *Asr2* expression appears to be quite low

compared to the other candidate genes. This might indicate that *Asr2* does not play a major role in drought and cold response, but rather in other stress conditions. Another possible explanation for the relatively low expression of *Asr2* is that it is predominantly expressed in other organs than leaves. Indeed, Maskin et al. [43] found *Asr2* to be up-regulated in roots – but not in leaves – of cultivated tomato after drought stress. As we do not discover a high expression in leaves, organ-specific expression of *Asr2* might also occur in wild tomato species. However, more tissues should be tested to validate these findings.

Finally, under water deficit *pLC30-15* and *Asr4* are more quickly induced in the accession from Tacna (hyperarid habitat) than in the other *S. chilense* accession from Quicacha (less dry habitat). However, we also observe a down-regulation of *Asr4* in the accession from Tacna after 3h. This could explain previous findings [44], in which *Asr4* expression could not be detected after 24h in drought-stressed wild tomato plants from a dry environment. Induction and down-regulation are faster in populations from dry habitats and the transcript was not sufficiently abundant to be detected. In the Tacna population, Fischer et al. [47] described a predominant *Asr4* haplotype, which is absent in other *S. chilense* populations. Interestingly, the accession tested here is homozygous for this haplotype which further highlights the abundance of this haplotype in the Tacna population. In addition, after cold stress *Asr4* seems to be more strongly induced in the Tacna accession from a high

altitude compared to the other *S. chilense* accessions. As for the other genes studied here, however, *Asr4* expression appears to be in general much lower and therefore tends to be noisier after cold treatment.

## Conclusions

Wild relatives of crop species have many advantages that make them interesting resources for studying plant evolution. One of them is that they are sampled from the ecological context they evolved in. We analyzed the expression variation of candidate genes in natural wild tomato populations. Such a rare study gives insights into natural variation in gene expression and can provide good candidates for improving plant tolerance to abiotic stresses. We found *Asr4* to be an interesting candidate, in accordance with a previous study [47]. Our observations suggest that both *Asr2* and *Asr4* as well as *pLC30-15* are induced by abiotic stresses, particularly by drought. The present study, as well as some others carried out in wild tomatoes [30,45-47], indicate that a candidate gene approach is efficient for detecting evidence for local adaptation to abiotic stresses and that wild tomato species constitute a valuable genetic resource for genes conferring resistance to abiotic stress. The genome of cultivated tomato became recently available [94]. Therefore, the evolution of regulatory elements can now be analyzed much more comprehensively, as has been done in *Arabidopsis* [95]. Finally, our results that positive selection occurs more often in local *S. chilense* populations and gene expression responses appear to be generally faster and stronger in this species seem to support the previous conclusions that *S. chilense* shows more evidence of local adaptation to drought and temperature stress than *S. peruvianum* [30,47,96].

## Supporting Information

**File S1. Contains additional Figures and Tables: Table S1 Numbers of sequenced haplotypes.** Table S2 Primer sequences and amplification details for PCR of *pAsr2*, *pAsr4*, *5'pLC*, and *3'pLC*. Table S3 Primer sequences and amplification details for the qPCR of the *Asr* genes, *pLC30-15*, and the reference genes. Table S4 Summary of function and sequences of motifs found at *pAsr2*, *pAsr4*, *5'pLC*, and *3'pLC*

## References

1. Fisher RA (1930) The genetical theory of natural selection. Oxford, UK: Oxford University Press.
2. Wray GA (2007) The evolutionary significance of *cis*-regulatory mutations. *Nat Rev Genet* 8: 206-216. doi:10.1038/nrg2063. PubMed: 17304246.
3. Wilson AC, Maxson LR, Sarich VM (1974) Two types of molecular evolution - evidence from studies of interspecific hybridization. *Proc Natl Acad Sci U\_S\_A* 71: 2843-2847. doi:10.1073/pnas.71.7.2843. PubMed: 4212492.
4. King MC, Wilson AC (1975) Evolution at two levels in humans and chimpanzees. *Science* 188: 107-116. doi:10.1126/science.1090005. PubMed: 1090005.
5. Ferea TL, Botstein D, Brown PO, Rosenzweig RF (1999) Systematic changes in gene expression patterns following adaptive evolution in yeast. *Proc Natl Acad Sci U\_S\_A* 96: 9721-9726. doi:10.1073/pnas.96.17.9721. PubMed: 10449761.
6. Cooper TF, Rozen DE, Lenski RE (2003) Parallel changes in gene expression after 20,000 generations of evolution in *Escherichia coli*. *Proc Natl Acad Sci U\_S\_A* 100: 1072-1077. doi:10.1073/pnas.0334340100. PubMed: 12538876.
7. Doebley J, Stec A, Hubbard L (1997) The evolution of apical dominance in maize. *Nature* 386: 485-488. doi:10.1038/386485a0. PubMed: 9087405.
8. Wang H, Nussbaum-Wagler T, Li B, Zhao Q, Vigouroux Y et al. (2005) The origin of the naked grains of maize. *Nature* 436: 714-719. doi:10.1038/nature03863. PubMed: 16079849.
9. Konishi S, Izawa T, Lin SY, Ebana K, Fukuta Y et al. (2006) An SNP caused loss of seed shattering during rice domestication. *Science* 312: 1392-1396. doi:10.1126/science.1126410. PubMed: 16614172.
10. Hutter S, Saminadin-Peter SS, Stephan W, Parsch J (2008) Gene expression variation in African and European populations of *Drosophila*

using PlantCARE. Figure S1: Sliding window analysis of (A)  $\pi$  and (B) Tajima's *D* for the Tacna (red) and the Quicacha (green) populations over *pAsr2*. The x-axis indicates the location relative to the start codon of the *Asr2* gene; purple boxes indicate regulatory motifs. Figure S2: Sliding window analysis of (A)  $\pi$  and (B) Fay & Wu's *H* for the Tacna (red) and the Quicacha (green) populations over *3'pLC*. The x-axis indicates the location relative to the stop codon of the *pLC30-15* gene; purple boxes indicate regulatory motifs. Figure S3: *pAsr2* haplotypes for the Tacna and Quicacha populations. Only polymorphic sites are shown. The number behind the sequences indicates the frequency of each haplotype. Figure S4: *5'pLC* haplotypes for the Tacna and Quicacha populations. Only polymorphic sites are shown. The number behind the sequences indicates the frequency of each haplotype. (PDF)

**File S2. *pAsr2* alignment**  
(FAS)

**File S3. *pAsr4* alignment**  
(FAS)

**File S4. *5'pLC* alignment**  
(FAS)

**File S5. *3'pLC* alignment**  
(FAS)

## Acknowledgements

We thank Hilde Lainer for technical assistance, Susi Voigt for valuable suggestions on the gene expression analysis, and Lu Zhang for help with the expression experiments. We are also grateful to Létizia Camus-Kulandaivelu, Miri Linnenbrink and three reviewers for valuable comments that improved the presentation of this paper.

## Author Contributions

Conceived and designed the experiments: IF WS MM. Performed the experiments: IF KS MM. Analyzed the data: IF KS MM. Wrote the manuscript: IF WS MM.

- melanogaster*. Genome Biol 9: R12. doi:10.1186/gb-2008-9-1-r12. PubMed: 18208589.
11. Müller L, Hutter S, Stamboliyska R, Saminadin-Peter SS, Stephan W et al. (2011) Population transcriptomics of *Drosophila melanogaster* females. BMC Genomics 12: 81. doi:10.1186/1471-2164-12-81. PubMed: 21276238.
  12. Matzkin LM (2012) Population transcriptomics of cactus host shifts in *Drosophila mojavensis*. Mol Ecol 21: 2428-2439. doi:10.1111/j.1365-294X.2012.05549.x. PubMed: 22512269.
  13. Hodgins KA, Lai Z, Nurkowski K, Huang J, Rieseberg LH (2013) The molecular basis of invasiveness: differences in gene expression of native and introduced common ragweed (*Ambrosia artemisiifolia*) in stressful and benign environments. Mol Ecol 22: 2496-2510. doi:10.1111/mec.12179. PubMed: 23294156.
  14. Guggisberg A, Lai Z, Huang J, Rieseberg LH (2013) Transcriptome divergence between introduced and native populations of Canada thistle, *Cirsium arvense*. New Phytol 199: 595-608. doi:10.1111/nph.12258. PubMed: 23586922.
  15. Catalán A, Hutter S, Parsch J (2012) Population and sex differences in *Drosophila melanogaster* brain gene expression. BMC Genomics 13: 654. doi:10.1186/1471-2164-13-654. PubMed: 23170910.
  16. Smith G, Fang Y, Liu X, Kenny J, Cossins AR et al. (2013) Transcriptome-wide expression variation associated with environmental plasticity and mating success in cactophilic *Drosophila mojavensis*. Evolution 67: 1950-1963. doi:10.1111/evo.12082. PubMed: 23815652.
  17. Guo S, Zhang J, Sun H, Salse J, Lucas WJ et al. (2013) The draft genome of watermelon (*Citrullus lanatus*) and resequencing of 20 diverse accessions. Nat Genet 45: 51-58. PubMed: 23179023.
  18. Mboup M, Fischer I, Lainer H, Stephan W (2012) Trans-species polymorphism and allele-specific expression in the *CBF* gene family of wild tomatoes. Mol Biol Evol 29: 3641-3652. doi:10.1093/molbev/mss176. PubMed: 22787283.
  19. Baker RL, Hileman LC, Diggle PK (2012) Patterns of shoot architecture in locally adapted populations are linked to intraspecific differences in gene regulation. New Phytol 196: 271-281. doi:10.1111/j.1469-8137.2012.04245.x. PubMed: 22882227.
  20. Fay JC, Wittkopp PJ (2008) Evaluating the role of natural selection in the evolution of gene regulation. Heredity 100: 191-199. doi:10.1038/sj.hdy.6801000. PubMed: 17519966.
  21. Schaeffe B, Emerson JJ, Wang T-Y, Lu M-YJ, Hsieh L-C et al. (2013) Inheritance of gene expression level and selective constraints on *trans*- and *cis*-regulatory changes in yeast. Mol Biol Evol 30: 2121-33. doi:10.1093/molbev/mst1114. PubMed: 23793114.
  22. Li C-M, Tzeng J-N, Sung H-M (2012) Effects of *cis* and *trans* regulatory variations on the expression divergence of heat shock response genes between yeast strains. Gene 506: 93-97. doi:10.1016/j.gene.2012.06.034. PubMed: 22759523.
  23. Yáñez M, Cáceres S, Orellana S, Bastías A, Verdugo I et al. (2009) An abiotic stress-responsive bZIP transcription factor from wild and cultivated tomatoes regulates stress-related genes. Plant Cell Rep 28: 1497-1507. doi:10.1007/s00299-009-0749-4. PubMed: 19652975.
  24. Mahajan S, Tuteja N (2005) Cold, salinity and drought stresses: an overview. Arch Biochem Biophys 444: 139-158. doi:10.1016/j.abb.2005.10.018. PubMed: 16309626.
  25. Ingram J, Bartels D (1996) The molecular basis of dehydration tolerance in plants. Annu Rev Plant Physiol Plant Mol Ecol 47: 377-403.
  26. Bray EA (1997) Plant responses to water deficit. Trends Plant Sci 2: 48-54. doi:10.5363/tits.2.10\_48.
  27. Battaglia M, Olvera-Carrillo Y, Garciarrubio A, Campos F, Covarrubias AA (2008) The enigmatic LEA proteins and other hydrophilins. Plant Physiol 148: 6-24. doi:10.1104/pp.108.120725. PubMed: 18772351.
  28. Chen RD, Campeau N, Greer AF, Bellemare G, Tabaeizadeh Z (1993) Sequence of a novel abscisic acid-induced and drought-induced cDNA from wild tomato (*Lycopersicon chilense*). Plant Physiol 103: 301. doi:10.1104/pp.103.1.301. PubMed: 8208856.
  29. Rorat T, Szabala BM, Grygorowicz WJ, Wojtowicz B, Yin Z et al. (2006) Expression of SK3-type dehydrin in transporting organs is associated with cold acclimation in *Solanum* species. Planta 224: 205-221. doi:10.1007/s00425-005-0200-1. PubMed: 16404580.
  30. Xia H, Camus-Kulandaivelu L, Stephan W, Tellier A, Zhang Z (2010) Nucleotide diversity patterns of local adaptation at drought-related candidate genes in wild tomatoes. Mol Ecol 19: 4144-4154. doi:10.1111/j.1365-294X.2010.04762.x. PubMed: 20831645.
  31. Iusem ND, Bartholomew DM, Hitz WD, Scolnik PA (1993) Tomato (*Lycopersicon esculentum*) transcript induced by water deficit and ripening. Plant Physiol 102: 1353-1354. doi:10.1104/pp.102.4.1353. PubMed: 8278555.
  32. Rossi M, Iusem ND (1994) Tomato (*Lycopersicon esculentum*) genomic clone homologous to a gene encoding an abscisic acid induced protein. Plant Physiol 104: 1073-1074. doi:10.1104/pp.104.3.1073. PubMed: 8165244.
  33. Konrad Z, Bar-Zvi D (2008) Synergism between the chaperone-like activity of the stress regulated ASR1 protein and the osmolyte glycinebetaine. Planta 227: 1213-1219. doi:10.1007/s00425-008-0693-5. PubMed: 18270732.
  34. Maskin L, Frankel N, Gudesblat G, Demergasso MJ, Pietrasanta LI et al. (2007) Dimerization and DNA-binding of ASR1, a small hydrophilic protein abundant in plant tissues suffering from water loss. Biochem Biophys Res Commun 352: 831-835. doi:10.1016/j.bbrc.2006.11.115. PubMed: 17157822.
  35. Saumonneau A, Agasse A, Bidoyen MT, Lallemand M, Cantereau A et al. (2008) Interaction of grape ASR proteins with a DREB transcription factor in the nucleus. FEBS Lett 582: 3281-3287. doi:10.1016/j.febslet.2008.09.015. PubMed: 18804467.
  36. Kalifa Y, Gilad A, Konrad Z, Zaccari M, Scolnik PA et al. (2004) The water- and salt-stress-regulated DNA-binding protein (abscisic acid stress ripening) gene encodes a zinc-dependent DNA-binding protein. Biochem J 381: 373-378. doi:10.1042/BJ20031800. PubMed: 15101820.
  37. Carrari F, Fernie AR, Iusem ND (2004) Heard it through the grapevine? ABA and sugar cross-talk: the ASR story. Trends Plant Sci 9: 57-59. doi:10.1016/j.tplants.2003.12.004. PubMed: 15106586.
  38. Frankel N, Nunes-Nesi A, Balbo I, Mazuch J, Centeno D et al. (2007) *ci21A/Asr1* expression influences glucose accumulation in potato tubers. Plant Mol Biol 63: 719-730. doi:10.1007/s11103-006-9120-0. PubMed: 17211513.
  39. Maskin L, Maldonado S, Iusem ND (2008) Tomato leaf spatial expression of stress-induced *Asr* genes. Mol Biol Rep 35: 501-505. doi:10.1007/s11033-007-9114-2. PubMed: 17602312.
  40. Jeanneau M, Gerentes D, Foueillassar X, Zivy M, Vidal J et al. (2002) Improvement in maize: towards the functional validation of the *Zm-Asr1* gene and increase of water use efficiency by over-expressing C4-PEPC. Biochimie 84: 1127-1135. doi:10.1016/S0300-9084(02)00024-X. PubMed: 12595141.
  41. Kalifa Y, Perlson E, Gilad A, Konrad Z, Scolnik PA et al. (2004) Over-expression of the water and salt stress-regulated *Asr1* gene confers an increased salt tolerance. Plant Cell Environ 27: 1459-1468. doi:10.1111/j.1365-3040.2004.01251.x.
  42. Yang C-Y, Chen Y-C, Jauh GY, Wang C-S (2005) A lily ASR protein involves abscisic acid signaling and confers drought and salt resistance in *Arabidopsis*. Plant Physiol 139: 836-846. doi:10.1104/pp.105.065458. PubMed: 16169963.
  43. Maskin L, Gudesblat GE, Moreno JE, Carrari FO, Frankel N et al. (2001) Differential expression of the members of the *Asr* gene family in tomato (*Lycopersicon esculentum*). Plant Sci 161: 739-746. doi:10.1016/S0168-9452(01)00464-2.
  44. Frankel N, Carrari F, Hasson E, Iusem ND (2006) Evolutionary history of the *Asr* gene family. Gene 378: 74-83. doi:10.1016/j.gene.2006.05.010. PubMed: 16822623.
  45. Frankel N, Hasson E, Iusem ND, Rossi MS (2003) Adaptive evolution of the water stress-induced gene *Asr2* in *Lycopersicon* species dwelling in arid habitats. Mol Biol Evol 20: 1955-1962. doi:10.1093/molbev/msg214. PubMed: 12949146.
  46. Giombini MI, Frankel N, Iusem ND, Hasson E (2009) Nucleotide polymorphism in the drought responsive gene *Asr2* in wild populations of tomato. Genetica 136: 13-25. doi:10.1007/s10709-008-9295-1. PubMed: 18636230.
  47. Fischer I, Camus-Kulandaivelu L, Allal F, Stephan W (2011) Adaptation to drought in two wild tomato species: the evolution of the *Asr* gene family. New Phytol 190: 1032-1044. doi:10.1111/j.1469-8137.2011.03648.x. PubMed: 21323928.
  48. Anderson JT, Willis JH, Mitchell-Olds T (2011) Evolutionary genetics of plant adaptation. Trends Genet 27: 258-266. doi:10.1016/j.tig.2011.04.001. PubMed: 21550682.
  49. Song BH, Mitchell-Olds T (2011) Evolutionary and ecological genomics of non-model plants. J Syst Evol 49: 17-24. doi:10.1111/j.1759-6831.2010.00111.x. PubMed: 21394233.
  50. Riihimäki M, Podolsky R, Kuittinen H, Koelewijn H, Savolainen O (2005) Studying genetics of adaptive variation in model organisms: flowering time variation in *Arabidopsis lyrata*. Genetica 123: 63-74. doi:10.1007/s10709-003-2711-7. PubMed: 15881681.
  51. Turner TL, Bourne EC, Von Wettberg EJ, Hu TT, Nuzhdin SV (2010) Population resequencing reveals local adaptation of *Arabidopsis lyrata* to serpentine soils. Nat Genet 42: 260-263. doi:10.1038/ng.515. PubMed: 20101244.
  52. Leinonen PH, Remington DL, Savolainen O (2011) Local adaptation, phenotypic differentiation, and hybrid fitness in diverged natural populations of *Arabidopsis lyrata*. Evolution 65: 90-107. doi:10.1111/j.1558-5646.2010.01119.x. PubMed: 20812972.

53. Knight CA, Vogel H, Kroymann J, Shumate A, Witsenboer H et al. (2006) Expression profiling and local adaptation of *Boecheera holboellii* populations for water use efficiency across a naturally occurring water stress gradient. *Mol Ecol* 15: 1229-1237. doi:10.1111/j.1365-294X.2006.02818.x. PubMed: 16626450.
54. Kane NC, Rieseberg LH (2007) Selective sweeps reveal candidate genes for adaptation to drought and salt tolerance in common sunflower, *Helianthus annuus*. *Genetics* 175: 1823-1834. doi:10.1534/genetics.106.067728. PubMed: 17237516.
55. Kane NC, Rieseberg LH (2008) Genetics and evolution of weedy *Helianthus annuus* populations: adaptation of an agricultural weed. *Mol Ecol* 17: 384-394. doi:10.1111/j.1365-294X.2007.03467.x. PubMed: 17725567.
56. Grillo MA, Li C, Fowlkes AM, Briggeman TM, Zhou A et al. (2009) Genetic architecture for the adaptive origin of annual wild rice, *Oryza nivara*. *Evolution* 63: 870-883. doi:10.1111/j.1558-5646.2008.00602.x. PubMed: 19236476.
57. Moyle LC (2008) Ecological and evolutionary genomics in the wild tomatoes (*Solanum* sect. *Lycopersicon*). *Evolution* 62: 2995-3013. doi: 10.1111/j.1558-5646.2008.00487.x. PubMed: 18752600.
58. Peralta I, Spooner D, Knapp S (2008) Taxonomy of wild tomatoes and their relatives (*Solanum* sect. *Lycopersicoideae*, sect. *Juglandifolia*, sect. *Lycopersicon*; *Solanaceae*). *Syst Bot Monogr* 84: 1–186.
59. Städler T, Roselius K, Stephan W (2005) Genealogical footprints of speciation processes in wild tomatoes: demography and evidence for historical gene flow. *Evolution* 59: 1268-1279. doi:10.1554/04-722. PubMed: 16050103.
60. Spooner D, Peralta I, Knapp S (2005) Comparison of AFLPs with other markers for phylogenetic inference in wild tomatoes [*Solanum* L. section *Lycopersicon* (Mill.) Wettst.]. *Taxon* 54: 43-61
61. Nakazato T, Warren DL, Moyle LC (2010) Ecological and geographic modes of species divergence in wild tomatoes. *Am J Bot* 97: 680-693. doi:10.3732/ajb.0900216. PubMed: 21622430.
62. Chetelat RT, Pertuzé RA, Faúndez L, Graham EB, Jones CM (2008) Distribution, ecology and reproductive biology of wild tomatoes and related nightshades from the Atacama Desert region of northern Chile. *Euphytica* 167: 77-93.
63. Lange BW, Langley CH, Stephan W (1990) Molecular evolution of *Drosophila* metallothionein genes. *Genetics* 126: 921-932. PubMed: 1981765.
64. Baudry E, Kerdelhué C, Innan H, Stephan W (2001) Species and recombination effects on DNA variability in the tomato genus. *Genetics* 158: 1725-1735. PubMed: 11514458.
65. Roselius K, Stephan W, Städler T (2005) The relationship of nucleotide polymorphism, recombination rate and selection in wild tomato species. *Genetics* 171: 753-763. doi:10.1534/genetics.105.043877. PubMed: 16085701.
66. Arunyawat U, Stephan W, Städler T (2007) Using multilocus sequence data to assess population structure, natural selection, and linkage disequilibrium in wild tomatoes. *Mol Biol Evol* 24: 2310-2322. doi: 10.1093/molbev/msm162. PubMed: 17675653.
67. Städler T, Arunyawat U, Stephan W (2008) Population genetics of speciation in two closely related wild tomatoes (*Solanum* section *Lycopersicon*). *Genetics* 178: 339-350. doi:10.1534/genetics.107.081810. PubMed: 18202377.
68. Librado P, Rozas J (2009) DnaSP v5: a software for comprehensive analysis of DNA polymorphism data. *Bioinformatics* 25: 1451-1452. doi: 10.1093/bioinformatics/btp187. PubMed: 19346325.
69. Watterson GA (1975) Number of segregating sites in genetic models without recombination. *Theor Popul Biol* 7: 256-276. doi: 10.1016/0040-5809(75)90020-9. PubMed: 1145509.
70. Tajima F (1983) Evolutionary relationship of DNA sequences in finite populations. *Genetics* 105: 437-460. PubMed: 6628982.
71. Tajima F (1989) Statistical method for testing the neutral mutation hypothesis by DNA polymorphism. *Genetics* 123: 585-595. PubMed: 2513255.
72. Fu YX, Li WH (1993) Statistical tests of neutrality of mutations. *Genetics* 133: 693-709. PubMed: 8454210.
73. Fay JC, Wu CI (2000) Hitchhiking under positive Darwinian selection. *Genetics* 155: 1405-1413. PubMed: 10880498.
74. Depaulis F, Veuille M (1998) Neutrality tests based on the distribution of haplotypes under an infinite-site model. *Mol Biol Evol* 15: 1788-1790. doi:10.1093/oxfordjournals.molbev.a025905. PubMed: 9917213.
75. Lescot M, Déhais P, Thijs G, Marchal K, Moreau Y et al. (2002) PlantCARE, a database of plant *cis*-acting regulatory elements and a portal to tools for *in silico* analysis of promoter sequences. *Nucleic Acids Res* 30: 325-327. doi:10.1093/nar/30.1.325. PubMed: 11752327.
76. Expósito-Rodríguez M, Borges AA, Borges-Pérez A, Pérez JA (2008) Selection of internal control genes for quantitative real-time RT-PCR studies during tomato development process. *BMC Plant Biol* 8: 131. doi:10.1186/1471-2229-8-131. PubMed: 19102748.
77. Livak KJ, Schmittgen TD (2001) Analysis of relative gene expression data using real-time quantitative PCR and the  $2^{-\Delta\Delta CT}$  method. *Methods* 25: 402-408. doi:10.1006/meth.2001.1262. PubMed: 11846609.
78. Hellemans J, Mortier G, De Paepe A, Speleman F, Vandesompele J (2007) qBase relative quantification framework and software for management and automated analysis of real-time quantitative PCR data. *Genome Biol* 8: R19. doi:10.1186/gb-2007-8-2-r19. PubMed: 17291332.
79. R Development Core Team (2012) R: A language and environment for statistical computing. Vienna, Austria: R Foundation for Statistical Computing.
80. Kirby DA, Stephan W (1996) Multi-locus selection and the structure of the *white* gene of *Drosophila melanogaster*. *Genetics* 144: 635-645. PubMed: 8889526.
81. Stern DL, Orgogozo V (2009) Is genetic evolution predictable? *Science* 323: 746-751. doi:10.1126/science.1158997. PubMed: 19197055.
82. Emerson JJ, Li W-H (2010) The genetic basis of evolutionary change in gene expression levels. *Philos Trans R Soc B* 365: 2581-2590. doi: 10.1098/rstb.2010.0005. PubMed: 20643748.
83. Proost S, Van Bel M, Sterck L, Billiau K, Van Parys T et al. (2009) PLAZA: A comparative genomics resource to study gene and genome evolution in plants. *Plant Cell* 21: 3718-3731. doi:10.1105/tpc.109.071506. PubMed: 20040540.
84. Silhavy D, Hutvágner G, Barta E, Bánfalvi Z (1995) Isolation and characterization of a water-stress-inducible cDNA clone from *Solanum chacoense*. *Plant Mol Biol* 27: 587-595. doi:10.1007/BF00019324. PubMed: 7894021.
85. Padmanabhan V, Dias DAL, Newton RJ (1997) Expression analysis of a gene family in loblolly pine (*Pinus taeda* L.) induced by water deficit stress. *Plant Mol Biol* 35: 801-807. doi:10.1023/A:1005897921567. PubMed: 9426600.
86. Wang C-S, Liao Y-E, Huang J-C, Wu T-D, Su C-C et al. (1998) Characterization of a desiccation-related protein in lily pollen during development and stress. *Plant Cell Physiol* 39: 1307-1314. doi: 10.1093/oxfordjournals.pcp.a029335. PubMed: 10050314.
87. Shen G, Pang Y, Wu W, Deng Z, Liu X et al. (2005) Molecular cloning, characterization and expression of a novel *Asr* gene from *Ginkgo biloba*. *Plant Physiol Biochem* 43: 836-843. doi:10.1016/j.plaphy.2005.06.010. PubMed: 16289880.
88. Philippe R, Courtois B, McNally KL, Mournet P, El-Malki R et al. (2010) Structure, allelic diversity and selection of *Asr* genes, candidate for drought tolerance, in *Oryza sativa* L. and wild relatives. *Theor Appl Genet* 121: 769-787. doi:10.1007/s00122-010-1348-z. PubMed: 20454772.
89. Schneider A, Salamini F, Gebhardt C (1997) Expression patterns and promoter activity of the cold-regulated gene *c12fA* of potato. *Plant Physiol* 113: 335-345. doi:10.1104/pp.113.2.335. PubMed: 9046587.
90. Blake WJ, Balázi S, Kohanski MA, Isaacs FJ, Murphy KF et al. (2006) Phenotypic consequences of promoter-mediated transcriptional noise. *Mol Cell* 24: 853-865. doi:10.1016/j.molcel.2006.11.003. PubMed: 17189188.
91. Maheshri N, O'Shea EK (2007) Living with noisy genes: how cells function reliably with inherent variability in gene expression. *Annu Rev Biophys Biomol Struct* 36: 413-434. doi:10.1146/annurev.biophys.36.040306.132705. PubMed: 17477840.
92. Ha M, Li WH, Chen ZJ (2007) External factors accelerate expression divergence between duplicate genes. *Trends Genet* 23: 162-166. doi: 10.1016/j.tig.2007.02.005. PubMed: 17320239.
93. Carey LB, van Dijk D, Sloom PM, Kaandorp JA, Segal E (2013) Promoter sequence determines the relationship between expression level and noise. *PLOS Biol* 11: e1001528. PubMed: 23565060.
94. the Tomato Genome Consortium (2012) The tomato genome sequence provides insights into fleshy fruit evolution. *Nature* 485: 635-641. doi: 10.1038/nature11119. PubMed: 22660326.
95. He F, Zhang X, Hu J, Turck F, Dong X et al. (2012) Genome-wide analysis of *cis*-regulatory divergence between species in the *Arabidopsis* genus. *Mol Biol Evol* 29: 3385-3395. doi:10.1093/molbev/mss146. PubMed: 22641789.
96. Tellier A, Laurent SJY, Lainer H, Pavlidis P, Stephan W (2012) Inference of seed bank parameters in two wild tomato species using ecological and genetic data. *Proc Natl Acad Sci U\_S\_A* 108: 17052-17057. PubMed: 21949404.