



HAL
open science

Field evidence of colonisation by holm oak, at the northern margin of its distribution range, during the anthropocene period

Sylvain S. Delzon, Morgane M. Urli, Jean-Charles Samalens, Jean-Baptiste J.-B. Lamy, Heike Lischke, Fabrice Sin, Niklaus E. Zimmermann, Annabel Porte A.J.

► **To cite this version:**

Sylvain S. Delzon, Morgane M. Urli, Jean-Charles Samalens, Jean-Baptiste J.-B. Lamy, Heike Lischke, et al.. Field evidence of colonisation by holm oak, at the northern margin of its distribution range, during the anthropocene period. PLoS ONE, 2013, 8 (11), 8 p. <10.1371/journal.pone.0080443>. <hal-02648198>

HAL Id: hal-02648198

<https://hal.inrae.fr/hal-02648198v1>

Submitted on 29 May 2020

HAL is a multi-disciplinary open access archive for the deposit and dissemination of scientific research documents, whether they are published or not. The documents may come from teaching and research institutions in France or abroad, or from public or private research centers.

L'archive ouverte pluridisciplinaire **HAL**, est destinée au dépôt et à la diffusion de documents scientifiques de niveau recherche, publiés ou non, émanant des établissements d'enseignement et de recherche français ou étrangers, des laboratoires publics ou privés.



HAL Authorization

Field Evidence of Colonisation by Holm Oak, at the Northern Margin of Its Distribution Range, during the Anthropocene Period

Sylvain Delzon^{1,2*}, Morgane Urli^{1,2}, Jean-Charles Samalens³, Jean-Baptiste Lamy^{1,2}, Heike Lischke⁴, Fabrice Sin⁵, Niklaus E. Zimmermann⁴, Annabel J. Porté^{1,2}

1 INRA, UMR 1202 BIOGECO, Cestas, France, **2** Université de Bordeaux, UMR 1202 BIOGECO, Cestas, France, **3** INRA, UR 1263 EPHYSE, Villenave d'Ornon, France, **4** Swiss Federal Research Institute WSL, Birmensdorf, Switzerland, **5** ONF, Agence de Bordeaux, Bruges, France

Abstract

A major unknown in the context of current climate change is the extent to which populations of slowly migrating species, such as trees, will track shifting climates. Niche modelling generally predicts substantial northward shifts of suitable habitats. There is therefore an urgent need for field-based forest observations to corroborate these extensive model simulations. We used forest inventory data providing presence/absence information from just over a century (1880–2010) for a Mediterranean species (*Quercus ilex*) in forests located at the northern edge of its distribution. The main goals of the study were (i) to investigate whether this species has actually spread into new areas during the Anthropocene period and (ii) to provide a direct estimation of tree migration rate. We show that *Q. ilex* has colonised substantial new areas over the last century. However, the maximum rate of colonisation by this species (22 to 57 m/year) was much slower than predicted by the models and necessary to follow changes in habitat suitability since 1880. Our results suggest that the rates of tree dispersion and establishment may also be too low to track shifts in bioclimatic envelopes in the future. The inclusion of contemporary, rather than historical, migration rates into models should improve our understanding of the response of species to climate change.

Citation: Delzon S, Urli M, Samalens J-C, Lamy J-B, Lischke H, et al. (2013) Field Evidence of Colonisation by Holm Oak, at the Northern Margin of Its Distribution Range, during the Anthropocene Period. PLoS ONE 8(11): e80443. doi:10.1371/journal.pone.0080443

Editor: Han Y.H. Chen, Lakehead University, Canada

Received: June 23, 2013; **Accepted:** October 3, 2013; **Published:** November 18, 2013

Copyright: © 2013 Delzon et al. This is an open-access article distributed under the terms of the Creative Commons Attribution License, which permits unrestricted use, distribution, and reproduction in any medium, provided the original author and source are credited.

Funding: This study was supported by a grant from the Aquitaine region and the BACCARA and MOTIVE projects, which were funded by the European Community's Seventh Framework Programme (FP7/2007-2013) under grant agreements nos. 226299 and 226544, respectively. The funders had no role in study design, data collection and analysis, decision to publish, or preparation of the manuscript.

Competing Interests: The authors have declared that no competing interests exist.

* E-mail: sylvain.delzon@u-bordeaux1.fr

Introduction

Global temperature rises, increasing atmospheric CO₂ concentration, nitrogen deposition, changes in land use and forest management have altered the production and biodiversity of the terrestrial biosphere [1,2]. Concerns have been raised about the responses to ongoing climatic change in tree species, particularly given the rapid rate of environmental change and the long lifespan of these species [3]. Trees may adopt various strategies (migration, adaptation) to cope with rapid environmental changes and landscape fragmentation, but adaptation alone (through genetic adaptation and phenotypic plasticity) is unlikely to be rapid enough to maintain standing populations [4]. A combination of migration and adaptation is, therefore, likely to be the only solution permitting the sustainable survival of tree populations. As a consequence, the boundaries of species distribution ranges may shift. Recent changes in plant distributions have, indeed, been reported in recent decades [1,5]. These migrations are however evident in mountain areas only, in which plant populations are mostly shifting upwards [6–12]. Studies of tree responses to rapid changes in climate are thus essential, to provide us with insight into the possible future distributions of these species and biodiversity.

A better understanding of the link between climate change and distribution range dynamics can be obtained from studies of past changes. Phylogeographic, palynologic and anthracological studies have quantified shifts in tree distribution ranges due to past climate change (alternations of glacial and post-glacial warming periods), providing essential information for the determination of migration directions and rates and for forecasting future shifts of tree species distribution ranges [13,14]. Fossil pollen data have suggested that northward migration is typical for many tree species responding to post-glacial climate warming [15,16]. The ranges of many temperate tree species were estimated to have expanded at rates of 500–1000 m year⁻¹ during the early Holocene [17], but these palynological studies showed that migration rates slow considerably after an initial phase of rapid invasion [17]. One well documented example of range shift is that for Holm oak (*Quercus ilex*), which displayed westward colonisation in the Mediterranean Basin during the Tertiary, demonstrated by studies of chloroplast DNA variation [18]. It remains unclear whether past migrations of trees were limited by rates of climate change or by their dispersal abilities [19], but past rates of migration suggest that even relatively rapid changes in range limits would be insufficient to keep pace with predicted future climatic changes [20,21].

Vegetation distribution models provide additional insight, improving our understanding of the impact of climate change on species distribution and biodiversity. Niche-based models accounting for observed geographical distribution ranges on the basis of climatic and other environmental variables are frequently used to forecast the potential impact of ongoing climatic changes on the distribution and size of plant and animal ranges [22–26]. Many studies based on the use of such models have suggested that species distributions may shift in response to climate change (mostly towards higher latitudes and altitudes; e.g. [27,28]). In the future, climatic conditions may be such that the magnitude of potential range changes is large even for trees [29]. Iverson and Prasad [30] evaluated potential changes in suitable habitats for tree species in the eastern United States and showed a substantial northward shift for 60 of the 80 species studied. Using eight models, ranging from niche-based models to process-based models including ecophysiological processes but no structural dynamics or seed dispersal, Cheaib *et al.* [31] predicted a significant range expansion, by 2055, for Mediterranean broad-leaved evergreen species (mostly Holm oak) over the western-most two thirds of France. All models have predicted massive range expansions for this species, but they yield very different predictions concerning the magnitude and location of the changes. Thus, although there is sufficient space and suitable habitats for the northward expansion of the distribution ranges of many species, the degree to which species are actually able to achieve such rapid migration remains poorly understood (see [32] for review): model uncertainties concerning the rate and direction of migration create broad differences in projections of the impact of climate change on tree species ranges [31,33]. Thus, in addition to more explicit modelling of the processes underlying migration [34], there is a need for field-based forest observations to confirm these extensive model simulations. Appropriate field observation data for the derivation of migration rates are scarce but of great importance, if we are to understand the response of tree species to global changes [32].

We investigated changes in the distribution of a Mediterranean tree species (*Quercus ilex*) at the northern edge of its range. This species is expected to be strongly affected by ongoing climate change [31]. Our main purpose was to check the veracity of the recent forecasts of changes in distribution area for this species. We focused on the situation in western France, an area corresponding to the northern limit of the distribution range for this Mediterranean oak. We used field-based forest inventories from the French National Forestry Office, providing presence/absence information for a period of just over a century (1880–2010) for *Quercus ilex* in four state-owned forests. The two specific goals of the study were (i) to check whether this Mediterranean species is currently colonising new sites at its leading edge, with a magnitude similar to that predicted by models and (ii) to provide a direct estimate of the rate of colonisation from field observations. By quantifying contemporary changes in tree distribution based on reliable information, this study will improve our understanding of the extent to which species are likely to move in the future.

Materials and Methods

Study area and climate

This study was conducted at the northern edge of the distribution range of Holm oak (*Quercus ilex* L.) in Europe, along the French Atlantic coast, from Bordeaux to Nantes (figure 1). This evergreen tree of the Fagaceae family is a typical component of the flora in Mediterranean climates, its largest populations extending throughout the Iberian Peninsula. The Holm oak

populations of the Atlantic coast dunes in France constitute the northern-most occurrences of Mediterranean evergreen trees. *Q. ilex* is considered to be drought-tolerant [35,36]. It displays tight stomatal control over transpiration, but may nevertheless display embolism and a loss of hydraulic conductance under severe drought stress [37,38]. The major limitations to the persistence of Holm oak at its northern margin are damage to photosynthetic capacity [39] and cold-related damage to young plants [40]. Holm oak acorns are dispersed during fall mainly by rodents and European jays (*Garrulus glandarius*). They usually transport acorns far from adult oaks [41,42]. The average distance of acorn dispersal is around 250 m, with dispersal events occurring up to 1 km from source Oak trees. Usually age at maturity of resprouter individuals is 10 years and acorn size can vary strongly between years and sites, with the biggest acorns preferably consumed by predators (wild boars), which might hamper regeneration.

We carried out a retrospective analysis of four state-owned forests covering a broad range of Atlantic dune forests; these forests have been managed by the National Forestry Office (ONF) since 1880 (figure 2). They are mixed pine-oak forests composed principally of a maritime pine (*Pinus pinaster*) overstorey and a codominant or dominant Holm oak (*Quercus ilex*) canopy, interspersed with scarce, sparse patches of pedunculate oak (*Quercus robur*) at the base of the dunes. These Atlantic coastal dune forests (maximum canopy height of 60 m) are subject to a maritime climate, with a mean annual temperature of 12.5°C and precipitation of 850 mm (see table 1). The soil is an arenosol with a filtering siliceous sandy texture and low organic matter content, varying little between sites. The climate warming recorded in France in the 20th century is about 30% greater than mean global warming levels. It has been particularly marked in south-western France, where temperatures have risen by 1.1°C [43] mostly during the second half of the 20th century (1.5°C from 1960 to 2000 in the studied areas, figure S1). This temperature increase has been accompanied by an increase in precipitation during the autumn and winter and lower levels of precipitation in the summer, exacerbating the summer drought period [43].

Retrospective survey data

For more than 120 years, the French National Forestry Office (ONF) has managed the state-owned forests along the Atlantic coast, for which it has carried out a comprehensive inventory of the species present. Four to seven surveys have been carried out during this extensive period, depending on the forest considered. However, in all the forests studied, the first survey was conducted between 1880 and 1891, and the last survey was carried out around the start of the 21st century. All inventories were carried out according to the same methodology in all plots (15 to 90 depending on the studied forest). Briefly, forest managers investigated forest plots, scoring various types of tree species (broadleaved oaks, evergreen oak, pines) as present or absent (including seedlings, saplings and adult trees without distinction). As Holm oak is the only evergreen oak growing in these forests, its presence/absence within all plots was known with certainty. Forest-covered plots were explored at least once during each of the survey periods, such that geographic coverage could be considered complete and identical for all surveys. The observed presence of this species in these forest plots was then used for the construction of maps. The distribution maps obtained during different periods therefore provide estimates of changes in the area occupied by Holm oak.

The range of a colonising species spreads to become irregular in shape over geographic space, due to stochastic processes, geographic boundaries and multiple colonisation fronts. We

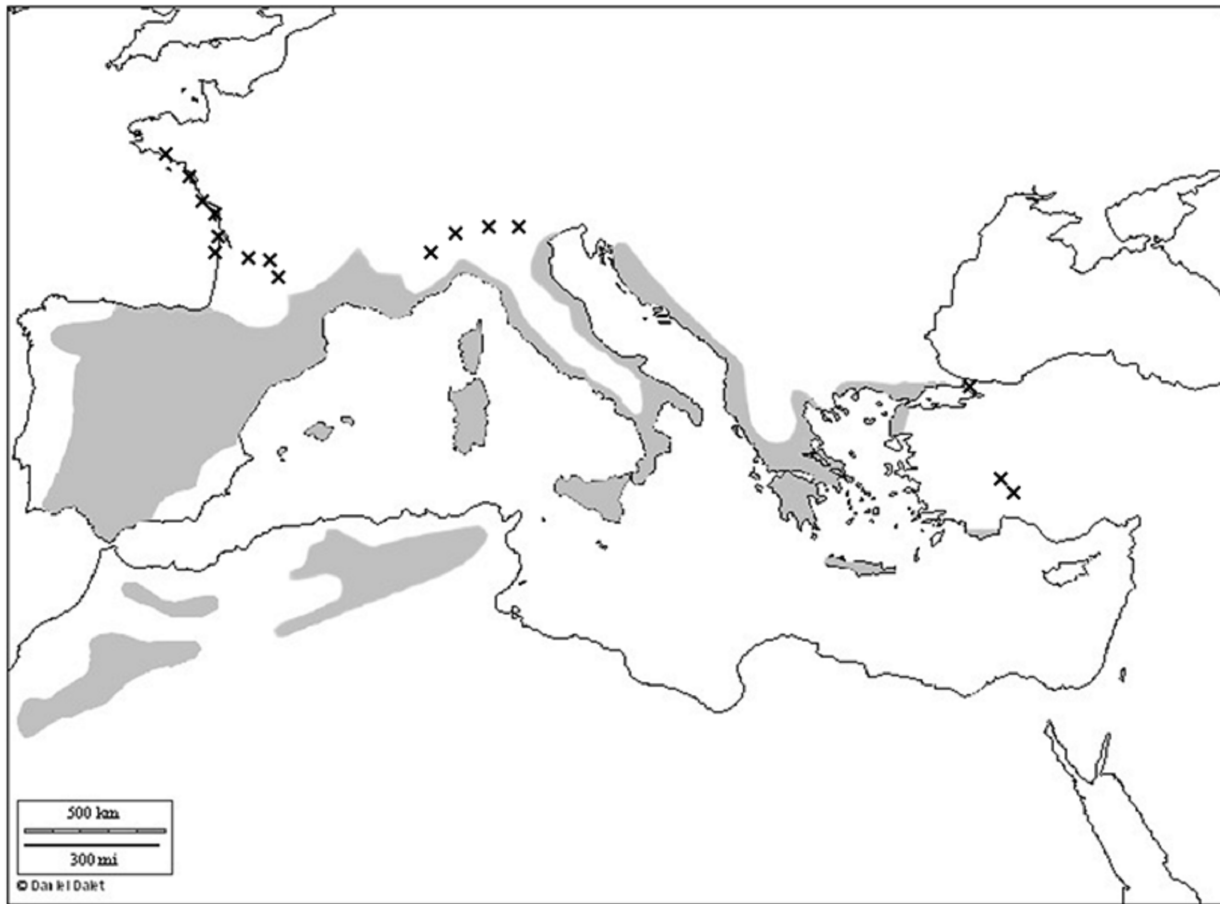


Figure 1. Map of the current distribution range of Holm oak (*Quercus ilex*) in the Mediterranean basin. The distribution range of *Quercus ilex* is shown in grey and crosses represent geographically isolated populations. The map was established according to the findings of Barbero *et al.* [74], Michaud *et al.* [75] and raw data from the French National Forest Inventory (http://inventaire-forestier.ign.fr/edb/query/show-query-form#consultation_panel). The blank base map was provided free of charge and use by Daniel Dalet/Académie Aix-Marseille (http://www.ac-aix-marseille.fr/pedagogie/jcms/c_67064/fr/cartotheque). doi:10.1371/journal.pone.0080443.g001

therefore estimated the colonisation rate based on the colonized area rather than using a unidirectional distance, which might result in overestimation. For each inventory date, the colonised area, a , was measured by summing the areas of plots in which *Q. ilex* was observed. Assuming an omnidirectional spread of this species within each studied forest, the radius of a circle of the same area was calculated. The rate of colonisation between two inventories (t_{+1} , t) was then estimated as follows:

$$\text{rate} = \frac{\sqrt{\frac{a(t_{+1})}{\pi}} - \sqrt{\frac{a(t)}{\pi}}}{t_{+1} - t}$$

The maximum colonisation rate for each forest studied (highest values throughout the entire period) was preferably used in order to (i) determine the capacity of tree populations to migrate, and (ii) avoid bias due to spatial constraints related to the forest boundaries. Thus we did not compare mean values of colonization rate during the studied period because recent rates were constrained by the limited size of the forests.

Results and Discussion

We found that the distribution of *Q. ilex* had changed markedly over the last century, with massive colonisation occurring in all the studied forests along the Atlantic coast (figure 3). From relict individuals in the studied forests, this species began to colonise new areas in the early 1900s, spreading considerably in the middle of the 20th century. Most inventories now indicate the presence of Holm oak throughout the entire area of the forests investigated. There have been only a few detailed case studies of range expansion in trees during the Anthropocene period, although such events may be very common. Indeed, long-term presence/absence data based on field observations are very scarce. Walther *et al.* [44] demonstrated range expansion for *Ilex aquifolium* in northern Europe in association with an increase in winter temperatures. Forest inventories have been used to estimate tree migration, but always in an indirect manner, by comparing the latitude for seedling and tree biomass [45], or by comparing latitudinal distributions of abundance and occupancy [46], for example. Such studies have concluded that most tree species are currently colonising new areas at their northern margins in the eastern USA. However, these studies have tended to analyse dynamics at the core of the distribution, rather than at its limits. Their analyses

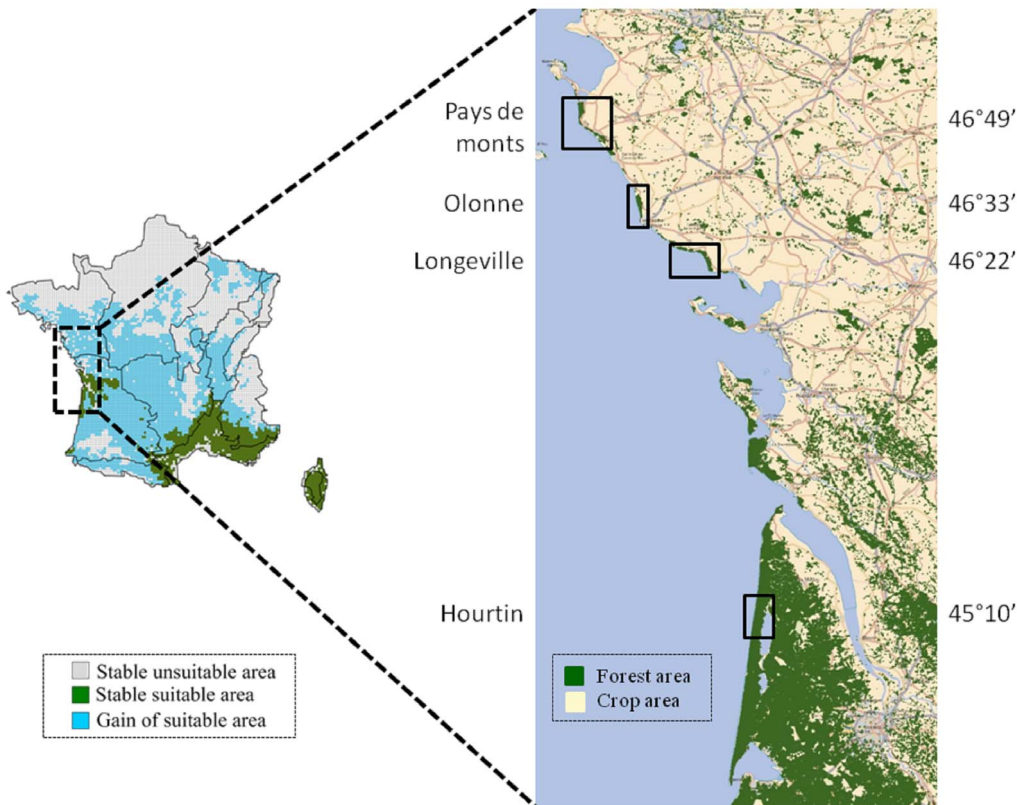


Figure 2. Map of the study area, with locations and mean latitudes of the four state-owned forests used in the retrospective analysis (Pays de Monts, Olonne, Longeville, and Hourtin; right panel). These studied forests represent the northern limit of Holm oak distribution in Europe. All forest covers are represented in green colour. The map in the left panel shows the changes in Holm oak suitable habitat by 2055 in France as predicted by the BIOMOD niche-based model [31]. The base map featuring the forested areas was extracted free of charge and use from the IGN National Forest Inventory cartography site ((© IGN 2013 – BD Forêt V1 des départements 33,17, 85 and FranceRaster® V.1 (2007 ©IGN/CARTOSPHERE))).
doi:10.1371/journal.pone.0080443.g002

therefore fail to portray the dynamics at the northern margin of the species concerned [45]. Zhu *et al.* [47] recently reported that there was little evidence of climate-induced tree migration, with only a few species (20%) presenting a pattern consistent with a northward shift of their northern distribution margin. In a similar study, Gehrig-Fasel *et al.* [48] found that only a small proportion (5%) of observed shift close to or at the upper tree line in Switzerland could readily be attributed to climate-induced migration, the remaining observed changes instead reflecting changes in land use. In the same way, the treeline of *Abies alba* has

shifted upward in the Alps during the second half of the 20th century, mainly in response to land use change, even though the role of climatic warming cannot be ruled out [49].

The data presented in table 2 are derived from the colonisation maps generated over periods of 112 to 130 years, for similar local spatial scales in each case. The highest values of colonisation rates for the forests studied were between 22 and 57 m yr⁻¹. Colonisation rates were fastest in the southern-most forest of the study area (Hourtin) and decreased with increasing latitude (figure 4), but the changes observed were of similar magnitude in all forests over the period studied. The estimated colonisation rates were much lower than those estimated for post-glacial migrations of trees (> 500 m year⁻¹ [1,50,51]), probably because colonising individuals do not encounter established forests during the Holocene [17]. Competition with other species at a local scale may thus have slowed Holm oak colonisation during the Anthropocene [34]. The potential of a species to colonise a new area inevitably depends on its performance relative to those of the resident species, and interactions with other species may clearly slow establishment and maturation, thereby decreasing the rate of migration of a tree species, thereby decreasing the capacity of that species to track the changing climate [52]. The difference in colonisation rates between the Holocene and Anthropocene periods may also reflect habitat fragmentation due to human activity [53,54], forest management or, simply, an overestimation of past migration rates in cases in which outlier populations invisible to the pollen record nucleate range expansions [55].

Table 1. Location and climatic characteristics of the four forests studied.

Forest	Area ha	Latitude	Longitude	MAP mm	MAT °C
Pays de Monts	2009	46°49' N	2°08' W	897	12.11
Olonne	1106	46°33' N	1°49' W	821	12.20
Longeville	1520	46°22' N	1°28' W	772	12.53
Hourtin	3621	45°10' N	1°09' W	864	12.93

Climate data were obtained from Météo France. MAP is the mean annual precipitation over the period 1961-1990; MAT is the mean annual temperature over the period 1961-1990.

doi:10.1371/journal.pone.0080443.t001

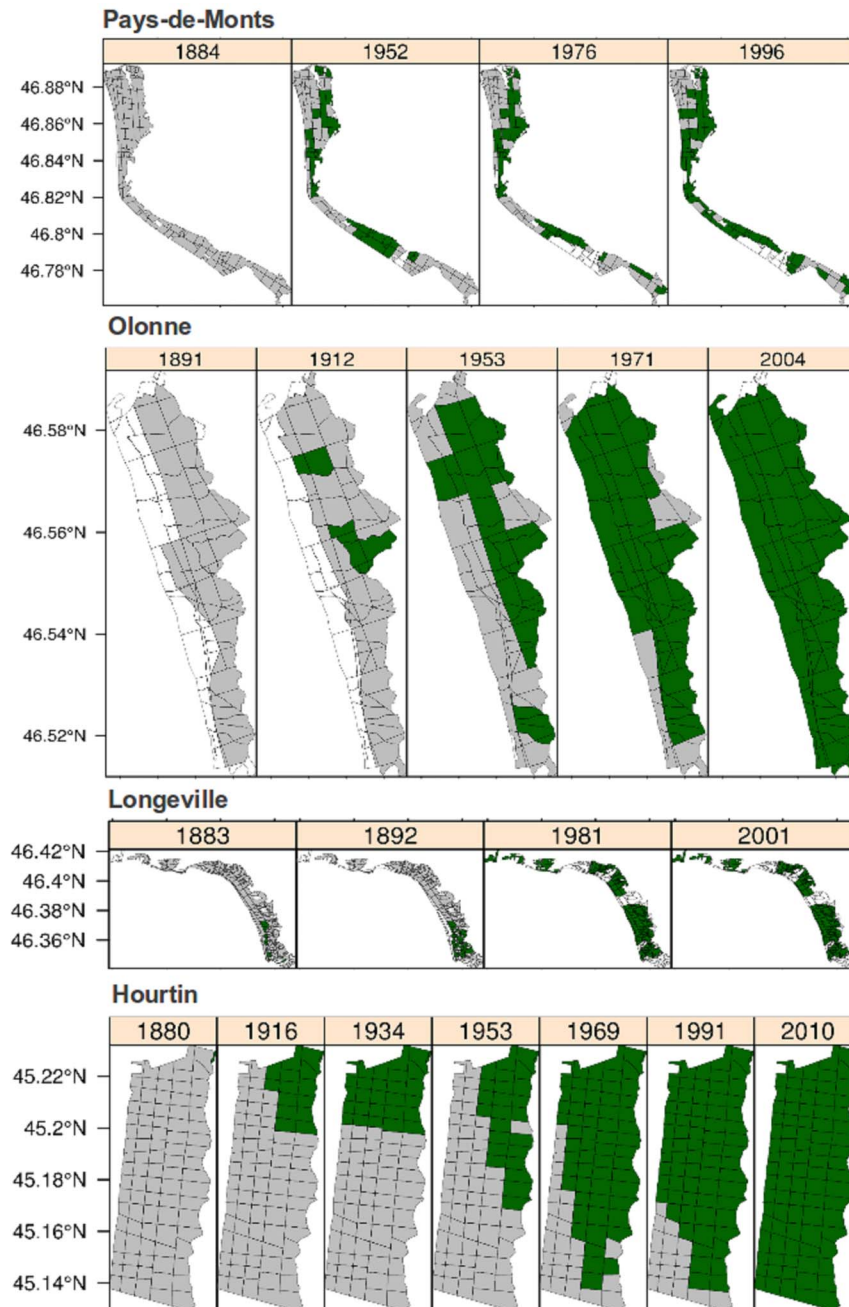


Figure 3. Changes in the area of Holm oak over the 20th century in each of the forests studied. The presence of Holm oak is indicated in green, the forest area is indicated in grey and the non-forest area is indicated in white. Forests are ordered by latitude, from bottom to top: Hourtin, Longeville, Olonne and Pays de Monts. Please note the different scales used. doi:10.1371/journal.pone.0080443.g003

Indeed, some recent studies have estimated rates of tree species migration during the Holocene of only one fifth to one tenth ($<100 \text{ m year}^{-1}$) previously reported values. Such discrepancies may be due to the presence of late glacial refugia close to the northern limits, and a lack of knowledge of these refugia may have biased earlier estimates [56,57]. Our estimated rates ($<60 \text{ m year}^{-1}$) are consistent with model predictions based on population dynamics, competition and dispersal [58,59], seed dispersal data (12.5 m year^{-1} for *Q. robur* and *Q. petraea* [60]) and cell-based migration simulation models (probability of colonisation within a zone of 10–20 km around the area currently occupied [61]).

By implicitly including biotic interactions between species, our migration rate estimates represent the actual capacity of the species to disperse into existing forests. They are, therefore, more representative when assessing the response of trees to current climate change than migration rate estimates from paleoecological studies of the last glaciation–deglaciation cycle. However, our field observations were made at a local spatial scale ($<4000 \text{ ha}$), so an underestimation of migration rates cannot be excluded. Indeed, the importance of long-distance dispersal for migration has been demonstrated theoretically [62,63]. Seed dispersal is usually considered to be long-distance if it occurs over a distance of more

Table 2. Colonisation rates (m year^{-1}) for Holm oak, estimated by the analysis of its presence distribution maps in the four studied forests along the latitudinal gradient.

Hourtin		Longeville		Olonne		Pays de Monts	
year	m yr^{-1}	year	m yr^{-1}	year	m yr^{-1}	year	m yr^{-1}
1880–1916	36.5	1883–1892	37.3	1891–1912	28.9	1884–1952	21.8
1916–1934	21.0	1892–1981	10.5	1912–1953	17.5	1952–1976	3.9
1934–1953	5.0			1953–1971	20.4	1976–1996	17.3
1953–1969	56.7			1971–2004	5.2		
1969–1991	6.8						
1991–2010	23.1						
maximum rates	56.7		37.3		28.9		21.8

doi:10.1371/journal.pone.0080443.t002

than 100 m. Our study therefore excluded only rare, very long-distance dispersal events (>5 km). However, Iverson *et al.* [61] demonstrated that a species has to have a reasonable abundance close to the limit of its range for colonisation to be likely. These authors concluded that very long-distance migration events alone might not be sufficient to rescue migration. The decreasing colonisation rate with increasing latitude found here confirms the importance of population abundance in the process of migration, with much lower rates of colonisation occurring in the northernmost populations (Pays de Mont/Olonne exhibit the same temperature change over the period studied but dramatically lower abundance of Holm oak).

Our findings confirm that this Mediterranean species is colonising new areas at the northern limits of its distribution range and that it therefore has the potential to shift the edge of its range northwards under projected climate change, as predicted by both niche-based and process-based models [31]. Indeed, all the various types of model indicate that the climate will probably become favourable for this species well to the north of its current bioclimatic range. However, we show here that despite the clear occurrence of migration in this tree species, colonisation rates are much lower than predicted by models. The estimated migration rates obtained here are two orders of magnitude below those

required to track climate change. Indeed, estimates of the migration rates required for plant species to keep pace with climate change over the coming century are frequently >1000 m year^{-1} [64,65], exceeding even the fastest migration rates observed during early Holocene colonisation [66]. However, none of these models takes dispersal capacity into account [31], and their projections of increases in range size should therefore be interpreted with caution. Only a few models have included specific migration rates, estimated from data obtained from paleoecological studies of the last glaciation–deglaciation cycle. The rates used in these models were thus between 1000 and 10000 m year^{-1} , depending on the species considered [67]. Sensitivity analyses of these models have generally identified migration rate as a crucial issue, and their results have indicated that colonisation remains strongly limited by migration rates, even if a rate of 1000 m year^{-1} is used [65]. Finally, our results clearly confirm that the migration of the species studied here will be limited by its ability to disperse and to colonise habitats that have recently become suitable. The time lag for species establishment in new areas is unknown, and similar field estimates of migration rates should be used and combined with modelling approaches, to improve the accuracy of projections and inferences concerning the future distributions of tree species.

This range expansion observed at the northern margin of the Holm oak distribution is likely explained by both climate and recent management changes but their relative contribution cannot be disentangled. Across the region studied, mean annual temperatures have rapidly increased, by 1.5°C during the 20th century, leading to more arid conditions, due to higher evapotranspiration rates and a change in the seasonal pattern of annual precipitation [68]. This climate warming is probably one of the key drivers of the observed range expansion of Holm oak over the last century, as suggested by the relationship between colonisation rates and latitude or mean annual temperature (MAT; table 1, figure 4). Northern range limitation by temperature has commonly been reported for various plant species [44,69,70]. On the other hand, during the first half of the 20th century (slight change in temperature; see figure S1), forest management probably initially moderated colonisation by Holm oak, limiting the expansion of the range of this species, because there was a general policy of cutting down Holm oaks to favour monospecific maritime pine stands [71,72]. However, this systematic felling policy ceased after the 1950s, when forest managers began to support natural forest dynamics, including Holm oak colonisation. This change in forestry practices has strongly influenced the recruitment of *Quercus ilex* and therefore its colonization rate. However, in all the forests

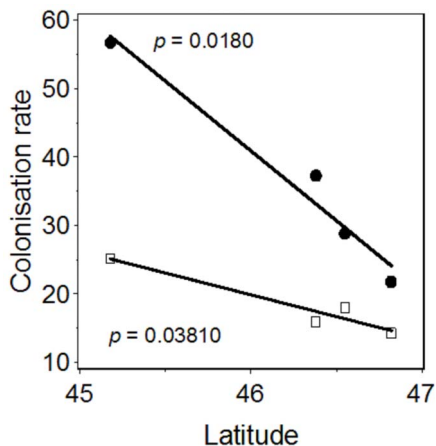


Figure 4. Colonisation rates (m year^{-1}) as a function of the latitude ($^\circ$) of the studied forests. Maximum (closed circle) and mean (open square) values were estimated for each forest. The P -values indicated are those for linear regression analysis. doi:10.1371/journal.pone.0080443.g004

studied, no land abandonment or Holm oak plantation has been observed; thus the pattern of colonization reported here cannot be attributed to land-use change while in contrary it played a major role in mountainous areas [49]. Both these successive changes in management and the sharp increase in temperature during the second half of the 20th century may have led to an increase in the rate of expansion of the distribution of Holm oak, as this species is known to recover rapidly from disturbances, such as felling and drought, through highly dynamic resprouting [73]. These changes were indeed reflected in estimated colonisation rates, which were higher in the second half of the 20th century (table 2).

Conclusions

The area along the Atlantic coast of France colonised by Holm oak increased steadily throughout most of the 20th century due to both management and climate changes, but the rate of range expansion by migration is much lower than would be required to track future climate change according to the predictions of niche modelling and phylogeographic studies. At its current rate of expansion, this species will not be able to colonise all the climatically suitable habitats that are likely to appear in France and elsewhere over the next 50 years or so. Even if a population disperses to a new region with a favourable climate, interactions with other species may prevent its establishment and further spread. Thus, predictions of substantial range shifts should probably be tempered, at least for plant species, and particularly for long-lived species, such as trees. The prediction of shifts in species ranges as a result of climate change could be improved by

taking migration processes into account explicitly in models. Measurements of contemporary colonisation rates are invaluable for providing realistic estimates of population range dynamics, and should be obtained and used more frequently in assessments of the potential of a species to track climate change.

Supporting Information

Figure S1 Temperature trends in the four studied areas over the twentieth century (left) and over the four last decades (right). Linear regressions fitted to the annual means are also depicted and showed an increase of 1.5°C during the last four decades. Temperature changes were statistically significant at $P < 0.001$ level and no significant differences of temperature changes have been found between areas. Data sources: Météo France (stations n° 33009001, 33236002, 85216001 and 85234001). (DOCX)

Acknowledgments

We thank Arndt Hampe and Antoine Kremer for providing stimulating advice, comments and discussion.

Author Contributions

Conceived and designed the experiments: SD NEZ AJP. Performed the experiments: MU JBL FS. Analyzed the data: SD MU JCS HL. Contributed reagents/materials/analysis tools: SD MU JCS HL. Wrote the paper: SD NEZ AJP.

References

- Parmesan C, Yohe G (2003) A globally coherent fingerprint of climate change impacts across natural systems. *Nature* 421: 37–42.
- Vitousek PM, Mooney HA, Lubchenco J, Melillo JM (1997) Human domination of Earth's ecosystems. *Science* 277: 494–499.
- Aitken SN, Yeaman S, Holliday JA, Wang T, Curtis-McLane S (2008) Adaptation, migration or extirpation: climate change outcomes for tree populations. *Evol Applic* 1: 95–111. 10.1111/j.1752-4571.2007.00013.x.
- Lindner M, Maroschek M, Netherer S, Kremer A, Barbat A et al. (2010) Climate change impacts, adaptive capacity, and vulnerability of European forest ecosystems. *For Ecol Manage* 259: 698–709.
- Bertin RI (2008) Plant phenology and distribution in relation to recent climate change. *J Torrey Bot Soc* 135: 126–146. <http://dx.doi.org/10.3159/07-RP-035R.1>.
- Grabherr G, Gottfried M, Pauli H (2009) Climate effects on mountain plants. *Nature* 369: 448. 10.1038/369448a0.
- Kullman L (2002) Rapid recent range-margin rise of tree and shrub species in the Swedish Scandes. *J Ecol* 90: 68–77. 10.1046/j.0022-0477.2001.00630.x.
- Lenoir J, Gegout JC, Marquet PA, De Ruffray P, Brisse H (2008) A significant upward shift in plant species optimum elevation during the 20th century. *Science* 320: 1768–1771. 10.1126/science.1156831.
- Peñuelas J, Boada M (2003) A global change-induced biome shift in the Montseny mountains (NE Spain). *Global Change Biol* 9: 131–140.
- Shiyatov SG, Terent'ev MM, Fomin VV, Zimmermann NE (2007) Altitudinal and horizontal shifts of the upper boundaries of open and closed forests in the Polar Urals in the 20th century. *Russian J Ecol* 38: 223–227.
- Urli M, Delzon S, Eyermann A, Couallier V, Garcia-Valdés R et al. (2013) Inferring shifts in tree species distribution using asymmetric distribution curves: a case study in the Iberian mountains. *J Veg Sci* in press.
- Wardle P, Coleman MC (1992) Evidence for rising upper limits of four native New Zealand forest trees. *NZ J Bot* 30: 303–314.
- Petit RJ, Hu FS, Dick CW (2008) Forests of the past: a window to future changes. *Science* 320: 1450–1452.
- Bush MB, Silman MR, Urrego DH (2004) 48,000 years of climate and forest change in a biodiversity hot spot. *Science* 303: 827–829. 10.1126/science.1090795.
- Davis MB, Shaw RG (2001) Range shifts and adaptive responses to Quaternary climate change. *Science* 292: 673–679. 10.1126/science.292.5517.673.
- King GA, Herstrom AA (1996) Holocene tree migration rates objectively determined from fossil pollen data. In: Huntley B, Cramer W, Marsa AV, Prentice IC, Allen JRM, editors. *Past and future environmental changes: the spatial and evolutionary responses of terrestrial biota*. New York, USA: Springer Verlag. pp. 91–102.
- Birks HJB (1989) Holocene isochrone maps and patterns of tree-spreading in the British Isles. *J Biogeogr* 16: 503–540.
- Lumaret R, Mir C, Michaud H, Raynal V (2008) Phylogeographical variation of chloroplast DNA in holm oak (*Quercus ilex* L.). *Mol Ecol* 11: 2327–2336.
- Clark JS, Fastie C, Hurr T, Jackson ST, Johnson C et al. (1998) Reid's paradox of rapid plant migration. *BioScience* 48: 13–24.
- Gear AJ, Huntley B (1991) Rapid changes in the range limits of Scots pine 4000 years ago. *Science* 251: 544. 10.1126/science.251.4993.544.
- Pearson RG (2006) Climate change and the migration capacity of species. *Trends Ecol Evol* 21: 111–113.
- Araújo MB, Thuiller W, Pearson RG (2006) Climate warming and the decline of amphibians and reptiles in Europe. *J Biogeogr* 33: 1712–1728. 10.1111/j.1365-2699.2006.01482.x.
- Huntley B, Collingham YC, Willis SG, Green RE (2008) Potential impacts of climatic change on European breeding birds. *PLoS One* 3: e1439. 1371/journal.pone.0001439.
- Jetz W, Wilcove DS, Dobson AP (2007) Projected impacts of climate and land-use change on the global diversity of birds. *PLoS Biology* 5: e157. 10.1371/journal.pbio.0050157.
- Thomas CD, Cameron A, Green RE, Bakkenes M, Beaumont LJ et al. (2004) Extinction risk from climate change. *Nature* 427: 145–148.
- Thuiller W, Lavorel S, Araújo MB, Sykes MT, Prentice IC (2005) Climate change threats to plant diversity in Europe. *PNAS* 102: 8245–8250.
- Guisan A, Thuiller W (2005) Predicting species distribution: offering more than simple habitat models. *Ecol Lett* 8: 993–1009. 10.1111/j.1461-0248.2005.00792.x.
- Thuiller W, Albert C, Araújo MB, Berry PM, Cabeza M et al. (2008) Predicting global change impacts on plant species' distributions: future challenges. *Perspect Plant Ecol* 9: 137–152.
- Shafer SL, Bartlein PJ, Thompson RS (2001) Potential changes in the distributions of western North America tree and shrub taxa under future climate scenarios. *Ecosystems* 4: 200–215.
- Iverson LR, Prasad AM (2001) Potential changes in tree species richness and forest community types following climate change. *Ecosystems* 4: 186–199. 10.1007/s10021-001-0003-6.
- Chebib A, Badeau V, Boe J, Chuine I, Delire C et al. (2012) Climate change impacts on tree ranges: model intercomparison facilitates understanding and quantification of uncertainty. *Ecol Lett*. 10.1111/j.1461-0248.2012.01764.x.
- Corlett RT, Westcott DA (2013) Will plant movements keep up with climate change? *Trends Ecol Evol* 28: 482–488.
- Higgins SI, Clark JS, Nathan R, Hovestadt T, Schurr FM et al. (2003) Forecasting plant migration rates: managing uncertainty for risk assessment. *J Ecol* 91: 341–347. 10.1046/j.1365-2745.2003.00781.x.

34. Neilson RP, Pitelka LF, Solomon AM, Nathan R, Midgley GF et al. (2005) Forecasting regional to global plant migration in response to climate change. *BioScience* 55: 749–759.
35. Damesin C, Rambal S, Joffre R (1998) Seasonal and annual changes in leaf delta C-13 in two co-occurring Mediterranean oaks: relation to leaf growth and drought progression. *Funct Ecol* 12: 778–785. 10.1046/j.1365-2435.1998.00259.x.
36. Tyree MT, Cochard H (1996) Summer and winter embolism in oak: impact on water relations. *Ann Sci For* 53: 173–180.
37. Limousin JM, Rambal S, Ourcival JM, Rocheteau A, Joffre R et al. (2009) Long-term transpiration change with rainfall decline in a Mediterranean *Quercus ilex* forest. *Global Change Biol* 15: 2163–2175. 10.1111/j.1365-2486.2009.01852.x.
38. Martínez-Vilalta J, Prat E, Oliveras I, Piñol J (2002) Xylem hydraulic properties of roots and stems of nine Mediterranean woody species. *Oecologia* 133: 19–29.
39. Larcher W, Tisi F (1990) Bioclima invernale e rendimento carbonico di *Quercus ilex* al limite settentrionale delle leccete prealpine. *Atti della Accademia Nazionale dei Lincei* 387: 3–22.
40. Larcher W, Mair B (1969) Die Temperaturreistenz als ökophysiologisches Konstitutionsmerkmal. 1. *Quercus ilex* und andere Eichenarten des Mittelmeergebietes. *Oecologia Plantarum* 4: 347–376. 10.1111/j.1752-4571.2007.00013.x.
41. Gómez JM, Puerta-Piñero C, Schupp EW (2008) Effectiveness of rodents as local seed dispersers of Holm oaks. *Oecologia* 155: 529–537.
42. Gómez JM (2003) Spatial patterns in long-distance dispersal of *Quercus ilex* acorns by jays in a heterogeneous landscape. *Ecography* 26: 573–584.
43. Moisselin JM, Schneider M, Canellas C (2002) Les changements climatiques en France au XXème siècle. Etude des longues séries homogénéisées de données de température et de précipitations. *La météorologie* 38: 45–56.
44. Walther GR, Berger S, Sykes MT (2005) An ecological footprint of climate change. *P Roy Soc B-Biol Sci* 272: 1427–1432.
45. Woodall CW, Oswalt CM, Westfall JA, Perry CH, Nelson MD et al. (2009) An indicator of tree migration in forests of the eastern United States. *For Ecol Manage* 257: 1434–1444.
46. Murphy HT, VanDerWal J, Lovett-Doust J (2010) Signatures of range expansion and erosion in eastern North American trees. *Ecol Lett* 13: 1233–1244.
47. Zhu K, Woodall CW, Clark JS (2012) Failure to migrate: lack of tree range expansion in response to climate change. *Global Change Biol* 18: 1042–1052.
48. Gehrig-Fasel J, Guisan A, Zimmermann NE (2007) Treeline shifts in the Swiss Alps: climate change or land abandonment? *J Veg Sci* 18: 571–582. 10.1111/j.1654-1103.2007.tb02571.x.
49. Chauchard S, Beilhe F, Denis N, Carcaillet C (2010) An increase in the upper tree-limit of silver fir (*Abies alba* Mill.) in the Alps since the mid-20th century: A land-use change phenomenon. *For Ecol Manage* 259: 1406–1415.
50. Noss RF (2002) Beyond Kyoto: forest management in a time of rapid climate change. *Conservation Biology* 15: 578–590.
51. Schwartz MW (1993) Modelling effects of habitat fragmentation on the ability of trees to respond to climatic warming. *Biodiv Conserv* 2: 51–61.
52. Ibañez I, Clark JS, Dietze MC (2008) Estimating colonization potential of migrant tree species. *Global Change Biol* 15: 1173–1188. 10.1111/j.1365-2486.2008.01777.x.
53. Higgins SI, Lavorel S, Revilla E (2003) Estimating plant migration rates under habitat loss and fragmentation. *Oikos* 101: 354–366. 10.1034/j.1600-0706.2003.12141.x.
54. Honnay O, Verheyen K, Butaye J, Jacquemyn H, Bossuyt B et al. (2002) Possible effects of habitat fragmentation and climate change on the range of forest plant species. *Ecol Lett* 5: 525–530. 10.1046/j.1461-0248.2002.00346.x.
55. McLachlan JS, Clark JS (2004) Reconstructing historical ranges with fossil data at continental scales. *For Ecol Manage* 197: 139–147.
56. Stewart JR, Lister AM (2001) Cryptic northern refugia and the origins of the modern biota. *Trends Ecol Evol* 16: 608–613.
57. McLachlan JS, Clark JS, Manos PS (2005) Molecular indicators of tree migration capacity under rapid climate change. *Ecology* 86: 2088–2098.
58. Meier ES, Lischke H, Schmatz DR, Zimmermann NE (2011) Climate, competition and connectivity affect future migration and ranges of European trees. *Global Ecology and Biogeography* 21: 164–178.
59. Lischke H (2005) Modeling tree species migration in the Alps during the Holocene: What creates complexity? *Ecol Complex* 2: 159–174.
60. Gerber S, Latouche-Hallé C, Lourmas M, Morand-Prieur ME, Oddou-Muratorio S et al. (2003) Mesure directe des flux de gènes en forêt. *Les actes du BRG* 4: 349–368.
61. Iverson LR, Schwartz MW, Prasad AM (2004) How fast and far might tree species migrate in the eastern United States due to climate change? *Global Ecology and Biogeography* 13: 209–219. 10.1111/j.1466-822X.2004.00093.x.
62. Cain ML, Milligan BG, Strand AE (2000) Long-distance seed dispersal in plant populations. *Am J Bot* 87: 1217–1227.
63. Higgins SI, Richardson DM (1999) Predicting plant migration rates in a changing world: the role of long-distance dispersal. *Am Nat* 153: 464–475. 10.1086/303193.
64. Malcolm JR, Markham A, Neilson RP, Garaci M (2002) Estimated migration rates under scenarios of global climate change. *J Biogeogr* 29: 835–849.
65. Morin X, Thuiller W (2009) Comparing niche-and process-based models to reduce prediction uncertainty in species range shifts under climate change. *Ecology* 90: 1301–1313.
66. Huntley Brian and Birks, H. J. B. (1983) *An Atlas of Past and Present Pollen Maps for Europe: 0 - 13000 years ago*. Cambridge, UK: Cambridge University Press.
67. Morin X, Viner D, Chuine I (2008) Tree species range shifts at a continental scale: new predictive insights from a process-based model. *J Ecol* 96: 784–794.
68. IPCC 2007 (2007) *Climate change 2007: the physical science basis*. In: Solomon S, Qin D, Manning M, Chen Z, Marquis M et al., editors. Contribution of working group I to the fourth assessment report of the intergovernmental panel on climate change. United Kingdom and New York, NY, USA: Cambridge University Press. pp. -996.
69. Morin X, Augspurger C, Chuine I (2007) Process-based modeling of species distributions: what limits temperate tree species' range boundaries? *Ecology* 88: 2280–2291.
70. Woodward FI, Lomas MR, Kelly CK (2004) Global climate and the distribution of plant biomes. *Phil Trans R Soc B* 359: 1465–1476.
71. ONF (1936) *Plan d'aménagement à Hourtin*. Agence interdépartementale de Bordeaux, France: ONF Direction territoriales du Sud Ouest.
72. ONF (1951) *Plan d'aménagement à Hourtin*. Agence interdépartementale de Bordeaux, France: ONF Direction territoriales du Sud Ouest.
73. Espelta JM, Retana J, Habrouk A (2003) Resprouting patterns after fire and response to stool cleaning of two coexisting Mediterranean oaks with contrasting leaf habits on two different sites. *For Ecol Manage* 179: 401–414. 10.1016/S0378-1127(02)00541-8.
74. Barbero M, Loisel R, Quézel P (1992) Biogeography, ecology and history of Mediterranean *Quercus ilex* ecosystems. *Plant Ecol* 99: 19–34. 10.1007/BF00118207.
75. Michaud H, Toumi L, Lumaret R, Li TX, Romane F et al. (1995) Effect of geographical discontinuity on genetic variation in *Quercus ilex* L. (holm oak). Evidence from enzyme polymorphism. *Heredity* 74: 590–606.