



HAL
open science

Perinatal Exposure to Environmentally Relevant Levels of Bisphenol A Decreases Fertility and Fecundity in CD-1 Mice

Nicolas J. Cabaton, Perinaaz R. Wadia, Beverly S. Rubin, Daniel Zalko, Cheryl M. Schaeberle, Michael H. Askenase, Jennifer L. Gadbois, Andrew P. Tharp, Gregory S. Whitt, Carlos Sonnenschein, et al.

► **To cite this version:**

Nicolas J. Cabaton, Perinaaz R. Wadia, Beverly S. Rubin, Daniel Zalko, Cheryl M. Schaeberle, et al.. Perinatal Exposure to Environmentally Relevant Levels of Bisphenol A Decreases Fertility and Fecundity in CD-1 Mice. *Environmental Health Perspectives*, 2011, 119 (4), pp.547 - 552. 10.1289/ehp.1002559 . hal-02649514

HAL Id: hal-02649514

<https://hal.inrae.fr/hal-02649514v1>

Submitted on 29 May 2020

HAL is a multi-disciplinary open access archive for the deposit and dissemination of scientific research documents, whether they are published or not. The documents may come from teaching and research institutions in France or abroad, or from public or private research centers.

L'archive ouverte pluridisciplinaire **HAL**, est destinée au dépôt et à la diffusion de documents scientifiques de niveau recherche, publiés ou non, émanant des établissements d'enseignement et de recherche français ou étrangers, des laboratoires publics ou privés.



Distributed under a Creative Commons Attribution 4.0 International License

Perinatal Exposure to Environmentally Relevant Levels of Bisphenol A Decreases Fertility and Fecundity in CD-1 Mice

Nicolas J. Cabaton,^{1*} Perinaaz R. Wadia,^{1*} Beverly S. Rubin,¹ Daniel Zalko,² Cheryl M. Schaeberle,¹ Michael H. Askenase,¹ Jennifer L. Gadbois,¹ Andrew P. Tharp,¹ Gregory S. Whitt,¹ Carlos Sonnenschein,¹ and Ana M. Soto¹

¹Department of Anatomy and Cellular Biology, Tufts University School of Medicine, Boston, Massachusetts, USA; ²Institut National de la Recherche Agronomique, UMR1089 Xénobiotiques, Toulouse, France

BACKGROUND: Perinatal exposure to low-doses of bisphenol A (BPA) results in alterations in the ovary, uterus, and mammary glands and in a sexually dimorphic region of the brain known to be important for estrous cyclicity.

OBJECTIVES: We aimed to determine whether perinatal exposure to environmentally relevant doses of BPA alters reproductive capacity.

METHODS: Female CD-1 mice that were exposed to BPA at 0, 25 ng, 250 ng, or 25 µg/kg body weight (BW)/day or diethylstilbestrol (DES) at 10 ng/kg BW/day (positive control) from gestational day 8 through day 16 of lactation were continuously housed with proven breeder males for 32 weeks starting at 2 months of age. At each delivery, pups born to these mating pairs were removed. The cumulative number of pups, number of deliveries, and litter size were recorded. The purity of the BPA used in this and our previous studies was assessed using HPLC, mass spectrometry, and nuclear magnetic resonance.

RESULTS: The forced breeding experiment revealed a decrease in the cumulative number of pups, observed as a nonmonotonic dose–response effect, and a decline in fertility and fecundity over time in female mice exposed perinatally to BPA. The BPA was 97% pure, with no evidence of contamination by other phenolic compounds.

CONCLUSIONS: Perinatal exposure to BPA leads to a dose-dependent decline in the reproductive capacity of female mice. The effects on the cumulative number of pups are comparable to those previously reported in mice developmentally exposed to DES, a compound well known to impair reproduction in women. This association suggests the possibility that early BPA exposure may also affect reproductive capacity in women.

KEY WORDS: biphasic dose response, bisphenol A, endocrine disruptor, fecundity, fertility, fetal origins of adult disease, perinatal exposure. *Environ Health Perspect* 119:547–552 (2011). doi:10.1289/ehp.1002559 [Online 2 December 2010]

Bisphenol A (BPA) has received heightened attention in the last decade because of its ubiquitous presence. BPA is used in the production of polycarbonate plastics and epoxy resins, including the resins used to coat the inside of food and beverage cans, and for dental composites and sealants (Olea et al. 1996; Vandenberg et al. 2007; Ye et al. 2009). A growing body of evidence supports the chronic nature of human BPA exposure. BPA was detected in the urine of > 92% of Americans tested, with higher levels present in children and adolescents relative to adults (Calafat et al. 2008). BPA has also been detected in maternal (Padmanabhan et al. 2008) and fetal plasma, placenta, and amniotic fluid (Ikezuki et al. 2002; Schönfelder et al. 2002) and in breast milk (Sun et al. 2004). The levels of urinary BPA in premature infants in neonatal intensive care units are approximately 10 times higher than those in the general population (Calafat et al. 2009).

BPA has been considered to be a weak estrogen because of its low potency compared with estradiol in assays involving nuclear receptors (Blair et al. 2001; Thomas and Dong 2006). However, low levels of BPA can act additively with other xenoestrogens as well as

with natural estrogens (Silva et al. 2002; Soto et al. 1994, 1997; Tollefsen 2002). BPA can also act via membrane receptors to produce effects that are similar in potency to those of estradiol (Welshons et al. 2006; Wozniak et al. 2005). These findings stress the relevance of low-dose exposures, particularly during the perinatal period, when BPA may affect the development of estrogen target organs.

Developmental exposure to endocrine disruptors has been postulated to play a role in the increased incidence of malformations of the male genital tract and testicular and breast cancers observed in the European and U.S. populations during the last half century, a time when numerous hormonally active chemicals were introduced into the environment (Diamanti-Kandaraki et al. 2009; Jouannet et al. 2001; Skakkebaek 1998; Skakkebaek et al. 2001). Epidemiological studies of women born in Denmark have suggested that young cohorts had progressively lower total fertility rates that were compensated for by the increased use of assisted reproductive technologies (Jensen et al. 2008). In a laboratory setting, female mice exposed *in utero* to environmentally relevant doses of BPA have shown advanced puberty (Howdeshell et al.

1999), alterations in estrous cyclicity, and an increase in the percentage of ovarian antral follicles (Markey et al. 2003). Early BPA exposure resulted in increased proliferative activity of epithelial cells in the endometrial glands and increased expression of estrogen receptor- α (ER α) and progesterone receptor in the luminal epithelium of the endometrium and in the subepithelial stroma of exposed mice (Markey et al. 2005). Perinatal exposure of mice to BPA also decreased sex differences in the anteroventral periventricular nucleus of the hypothalamus (Rubin et al. 2006), a nucleus known to be important for the preovulatory luteinizing hormone (LH) surge. In addition, BPA exposure during gestation and lactation accelerated the onset of acyclicity in rats (Rubin et al. 2001). Taken together, these multiple effects of BPA exposure during early development might be expected to compromise overall reproductive success.

The above-mentioned effects observed after early exposure to BPA are reminiscent of those observed after fetal exposure to another estrogenic compound, diethylstilbestrol (DES), which was widely prescribed to prevent miscarriages in pregnant women (Newbold 2008). Fetal exposure to DES resulted in oviduct malformations in mice during adulthood (Newbold et al. 1983) and uterine fibroids in women later in life (Baird and Newbold 2005; McLachlan et al. 1980). Early exposure to DES also advanced the age of vaginal opening and the age at first estrous in mice (Honma et al. 2002). In addition, prenatal exposure to DES altered the reproductive capacity of female mice in a forced breeding protocol (McLachlan et al. 1982).

Address correspondence to A.M. Soto, Department of Anatomy and Cellular Biology, Tufts University School of Medicine, 136 Harrison Ave., Boston, MA 02111 USA. Telephone: (617) 636-6954 Fax: (617) 636-3971. E-mail: ana.soto@tufts.edu

*These authors contributed equally to this work.

We thank J. Harmatz and D. Damassa for assistance with statistical analysis, W. Welshons for testing the rodent diet for estrogenicity, and C. Canlet for excellent assistance with nuclear magnetic resonance analysis.

This work was supported by National Institute of Environmental Health Sciences grant ES08314 and its supplement.

The authors declare they have no actual or potential competing financial interests.

Received 15 June 2010; accepted 19 November 2010.

This protocol revealed significant effects of DES, even at low doses, in stark contrast with the lack of effect of DES reported in studies that examined only the first pregnancy in DES-exposed females (Honma et al. 2002).

Based on the wide variety of effects on the reproductive system caused by fetal and/or neonatal exposure to BPA, and the reproductive effects caused by early exposure to DES, we hypothesized that perinatal exposure to BPA impairs the reproductive function of exposed females (Maffini et al. 2006). In the present study, we tested this hypothesis by assessing fertility and fecundity in BPA-exposed CD-1 mice over a period of 32 weeks in a forced breeding regimen.

Materials and Methods

Chemicals. Dimethyl sulfoxide (DMSO; CAS no. 67-68-5), DES (CAS no. 56-53-1), and BPA (4,4'-dihydroxydiphenyl dimethylmethane; CAS no. 80-05-7; product no. 23965-8, lot no. 03105ES; purity \geq 99%) were purchased from Sigma Chemical Company (Saint Louis, MO, USA). We further analyzed the purity of the BPA stock by HPLC using a Spectra P1000 pump (Thermo Separation Products, Les Ulis, France) associated with a 250 mm \times 4.6 mm (5 μ m) Zorbax SB-C₁₈ column protected by a Kromasil C₁₈ guard precolumn (Agilent; Interchim, Montluçon, France). Mobile phases and analytical conditions were as previously described (Jaeg et al. 2004). The system was coupled to a diode area detector (UV6000LP Spectra System; wavelength range, 220–360 nm; Thermo Separation Products). Next, the mass spectrometric (MS) analysis of BPA was performed on a quadruple

ion trap LCQ mass spectrometer (Thermo Electron, Les Ulis, France) equipped with an electrospray ionization (ESI) source. Finally, the nuclear magnetic resonance (NMR) spectrum of BPA was obtained at 300K on a Bruker Avance DRX-600 spectrometer (Bruker, Wissembourg, France) operating at 600.13 MHz and equipped with a 5-mm H, C, N inverse triple-resonance TXI cryoprobe attached to a cryoplatfrom (the preamplifier cooling unit). BPA (1 mg) was dissolved in 600 μ L deuterated methanol (CD₃OD), and one-dimensional spectrum was acquired using a standard pulse sequence for ¹H NMR. Sixteen free induction decays were collected with a spectral width of 12 ppm into 64,000 data points.

Animals. CD-1 female mice (12 weeks of age) and proven breeder male mice (all from Charles River Laboratories, Wilmington, MA, USA) were maintained in temperature- and light-controlled (14/10-hr light/dark cycle) conditions at the at Tufts University Human Nutrition and Research Center animal facility (approved by the Association for Assessment and Accreditation of Laboratory Animal Care International). All experimental procedures were approved by the Tufts University–New England Medical Center Institutional Animal Care and Use Committee. The animals were treated humanely and with regard for alleviation of suffering. Cages, water, and bedding all tested negligible for estrogenicity by the E-SCREEN assay (Soto et al. 1992). Water was supplied *ad libitum* from glass bottles. Food (Teklad 2018; Harlan, Indianapolis, IN, USA) was supplied *ad libitum*. The estrogenicity of food lots used was measured by the

E-SCREEN assay and found to be negligible (< 20 pmol estrogen equivalents per gram of feed). The estrogenic activity of the feed was also tested independently by W.V. Welshons in his laboratory (Welshons et al. 1990).

Mice were allowed to acclimatize for 5 days before being paired to mate. The morning on which a vaginal plug was detected was considered gestational day (GD) 1. On the evening of GD8, dams were implanted subcutaneously with Alzet osmotic pumps (model 1004; Alza Corp., Palo Alto, CA, USA) following the manufacturer recommendations. Pumps were designed to deliver vehicle alone (50% DMSO in water), the positive control (DES), or one of three doses of BPA. These pumps continued to release at a constant rate (0.11 μ L/hr) until day 16 of lactation. The actual delivered dose of BPA decreased as pregnancy progressed because the weight of the mother at GD6 was used to calculate BPA dose, and body weights (BW) increased from this point throughout pregnancy. BPA exposure groups were 0 (control), 25 ng, 250 ng, and 25 μ g BPA/kg BW/day. DES was administered at 10 ng/kg BW/day, which was the lowest effective dose tested in a forced breeding regimen (McLachlan et al. 1982). The dams delivered naturally, and the F₁ litters were culled to eight pups on the day after birth, keeping at least two males. Litters were weaned on postnatal day 21.

Experimental design. At 8 weeks of age, one F₁ female mouse from each treatment group was randomly chosen from each litter and individually housed with a nonexposed young male of proven fertility for a period of 32 weeks. A total of 18–21 dams in each

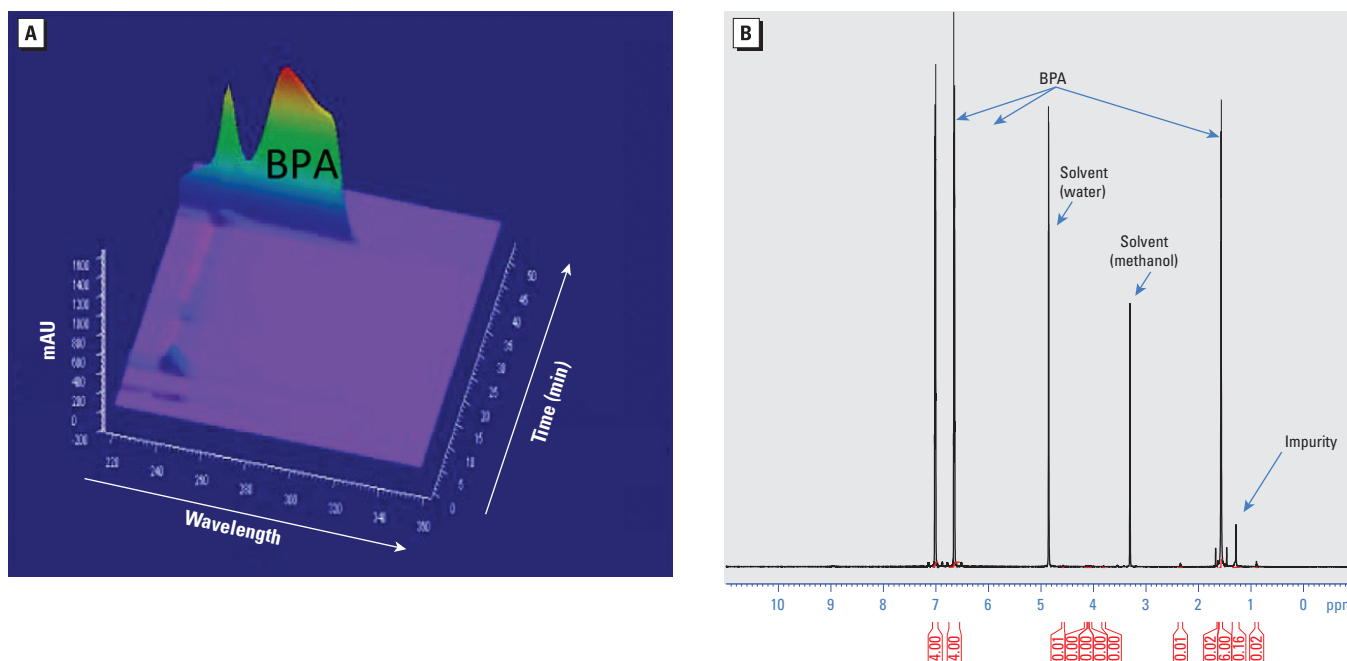


Figure 1. Diode area detector HPLC-UV analysis (A) and 600 MHz ¹H NMR spectrum (B) of the BPA used in these experiments (Sigma Aldrich catalog no. 23965-8).

group delivered litters (control, $n = 21$; BPA 25 ng/kg, $n = 19$; BPA 250 ng/kg, $n = 18$; BPA 25 $\mu\text{g}/\text{kg}$, $n = 20$; DES, $n = 20$). All the breeding cages were examined daily. On the day of each delivery, F_2 pups were separated from the mother, and their number, sex, and weight were recorded. The pups were sacrificed by decapitation, and the F_1 dam was immediately returned to the breeding cage. The cumulative number of live pups delivered, time to first litter, number of deliveries (fertility) per dam, number of neonates per litter (fecundity), and number of mice having litters were recorded.

Statistics. We used SPSS statistical software (version 15.0; SPSS Inc., Chicago, IL, USA) for all statistical analyses. The Kolmogorov-Smirnov test was used to assess differences in the cumulative number of pups between treatment groups. Differences in the total number of pregnancies were assessed using analysis of variance (ANOVA) and Dunnett's post hoc test. Fisher's exact test was used to analyze differences in the proportions of female mice in each treatment group with four or more pregnancies. All these results are presented as mean \pm SE or percentages. To study fecundity, scatter plots and trend lines of the number of pups versus delivery number were produced for each treatment group. The slope and correlation coefficient (R) of the trend lines were each compared across treatment groups using t -tests. For all statistical tests, results were considered significant at $p < 0.05$.

Results

Purity of BPA. When analyzed by HPLC with ultraviolet (UV) detection, the retention time of our BPA stock (43 min) was identical to that expected for authentic BPA (Zalko et al. 2003). Based on UV absorbance at 269 nm, BPA purity was close to 100% (Figure 1A). We detected minor impurities at lower wavelengths that eluted from the column with retention times of 10 min (major peak) and 22–23 min (minor peak), respectively. ESI-MS analysis detected the molecular ion of BPA (negatively charged) at m/z 227, consistent with its molecular mass of 228. We observed no other ion in the mass spectrum, indicating that interfering compounds were not present or were undetectable. The MS/MS analysis confirmed the structure of BPA, with a fragment ion detected at m/z 212, corresponding to the loss of one methyl group, as well as a fragment ion at m/z 133, diagnostic of the elimination of the phenol moiety. The NMR analysis showed two doublets at 7.01 and 6.65 ppm and the singlet at 1.57 ppm, characteristic of BPA. The singlet at 1.28 ppm did not belong to BPA; we concluded that it was associated with the presence of an impurity, which we

estimated by integration measurements to account for $3 \pm 2\%$ of the sample. In addition, in the ^1H NMR spectrum, the signals between 0.8 and 2.5 ppm corresponding to an impurity (Figure 1B) strongly suggested that this impurity was not a phenolic compound. The degree of purity determined for the BPA used for these experiments ($97 \pm 2\%$) was comparable to that reported by the manufacturer ($\geq 99\%$).

Growth and reproduction parameters. We observed no statistical differences in the dam weights by treatment groups. The percentage of dead pups and the sex ratio were comparable in all groups (Table 1). Additionally, when mated at 2 months of age, the time to first delivery did not differ by treatment group (Table 1).

Cumulative number of pups per dam.

The cumulative number of live pups born to BPA 25 ng/kg mice was significantly lower compared with controls starting at week 16 (mean \pm SE, 49.74 ± 4.21 pups vs. 67.48 ± 4.38 pups; $p = 0.037$) and

persisted until the end of the experiment (67.00 ± 5.70 pups vs. 81.90 ± 5.45 pups; $p < 0.001$) (Figure 2). BPA 25 $\mu\text{g}/\text{kg}$ mice also had significantly lower cumulative number of pups per dam compared with control mice. We observed a statistically significant difference between this group and controls beginning at week 16 (49.85 ± 3.69 pups vs. 67.48 ± 4.38 pups; $p = 0.037$) that persisted until the end of the experiment (58.25 ± 4.77 pups vs. 81.90 ± 5.45 pups; $p < 0.001$). The cumulative number of pups born to mice exposed to DES was also significantly lower than in the controls, beginning at week 25 (64.55 ± 6.44 pups vs. 80.00 ± 5.19 pups) and persisting until week 32 (65.70 ± 6.66 pups vs. 81.90 ± 5.45 pups; $p < 0.01$). The cumulative numbers of pups did not differ between the control and BPA 250 ng/kg groups at any time point. However, the BPA 250 ng/kg group differed from the BPA 25 ng/kg and BPA 25 $\mu\text{g}/\text{kg}$ groups [77.89 ± 6.64 pups vs. 57.00 ± 4.89 pups ($p = 0.042$) and

Table 1. Outcomes of forced reproduction experiment.

Treatment	No. of dams	Total no. of pups		Percent dead pups	Pup sex ratio ^a	Time to first delivery (days)	Dam weight at sacrifice (g)
		Dead	Live				
Control	20	29	1,720	1.66	0.554	21.90 \pm 2.61	71.24 \pm 3.54
BPA							
25 ng	19	16	1,273	1.24	0.463	22.68 \pm 3.87	67.59 \pm 2.38
250 ng	18	10	1,588	0.63	0.530	21.22 \pm 1.35	72.95 \pm 3.05
25 μg	20	26	1,165	2.18	0.506	21.05 \pm 1.19	72.93 \pm 2.48 ^b
DES	20	11	1,501	0.73	0.488	21.73 \pm 1.78	78.35 \pm 2.51 ^c

Values for time to first delivery and dam weight at sacrifice are given as mean \pm SE.

^aRatio of males to females. ^bTwo dams died at 8 months of age, before the end of the study; the cause of the deaths could not be established. ^cThree dams died (two dams at 3 months and one dam at 8 months of age) before the end of the study; the cause of the deaths could not be established.

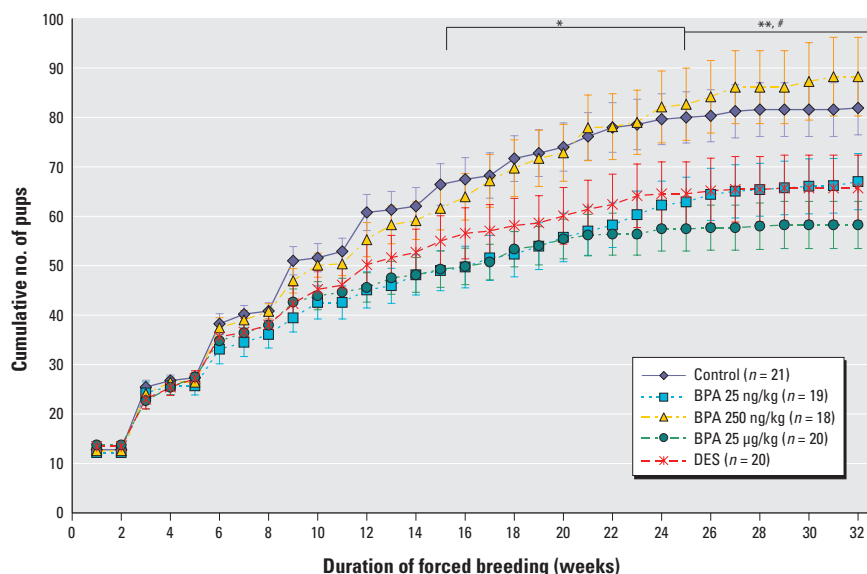


Figure 2. Reproductive capacity of mice exposed perinatally to BPA or 10 ng/kg BW/day DES, expressed as the cumulative number of pups born per dam over a period of 32 weeks of forced breeding (mean \pm SE). n , number of dams at the beginning of each experiment. Statistical analysis was performed using the Kolmogorov-Smirnov test.

For BPA 25 ng/kg and BPA 25 $\mu\text{g}/\text{kg}$ compared with controls during the same week, * $p < 0.05$ for weeks 16–24, and ** $p < 0.01$ for weeks 25–32. For DES compared with controls for the same week, # $p < 0.05$ for weeks 25–32.

56.20 ± 4.19 pups ($p = 0.042$), respectively] starting at week 21 and persisting until the end of the study period [88.22 ± 7.95 pups vs. 67.00 ± 7.70 pups ($p < 0.001$) and 58.25 ± 4.77 pups ($p < 0.001$), respectively]. Likewise, we observed a statistically significant difference between BPA 250 ng/kg and DES groups beginning at week 27 (86.11 ± 7.39 pups vs. 65.45 ± 6.62 pups; $p = 0.037$) and persisting until the end (88.22 ± 7.95 pups vs. 65.70 ± 6.66 pups; $p < 0.004$).

Fertility. We assessed fertility by the total number of litters per dam for each treatment group at the end of the 32-week period of forced breeding. Dams in the BPA 25 µg/kg group had significantly fewer pregnancies than the control dams ($p = 0.024$) (Figure 3A). We observed a trend toward a decreased number of pregnancies in the BPA 25 ng/kg group (5.74 ± 0.48 pregnancies) and DES group (5.5 ± 0.44 pregnancies) relative to controls (6.37 ± 0.39 pregnancies). The proportion of dams with six or more litters was significantly lower in the BPA 25 µg/kg group (35%) than in the controls (76%) (Figure 3B), as was the proportion of mice with four or more litters in the BPA 25 µg/kg group (60%) compared with the controls (95%; $p = 0.012$).

Fecundity. We created scatterplots to depict the number of pups born at each delivery for each treatment group, determined a best-fit line for each treatment group, and compared the slopes and correlation coefficients (R) of these lines (Figure 4). The difference in correlation coefficients indicated that the variation in fecundity within each treatment group that is attributed to aging differed for the BPA 25 µg/kg group ($R = 0.60$) compared to the control ($R = 0.36$; $p = 0.025$) and BPA 250 ng/kg ($R = 0.30$; $p = 0.005$) groups. The differences in slope indicated that the decline in number of pups delivered over time was hastened in the BPA 25 µg/kg group compared with the control ($p = 0.012$) and BPA 250 ng/kg ($p = 0.003$) groups.

Discussion

Developmental plasticity has been a central theme in embryology (Gilbert and Epel 2009), and it is currently being explored in medicine and public health because of growing evidence from studies in animal models and humans that various adult-onset diseases, such as obesity, diabetes, and cancer, may have their origins during fetal life (Bateson et al. 2004; Newbold et al. 2008; Soto and Sonnenschein 2010). Exposure to environmental endocrine disruptors during fetal development has been postulated to contribute to declining conception rates and increased incidence of female reproductive disorders such as oocyte aneuploidy, polycystic ovarian syndrome, and altered cyclicality, as well as endometriosis, uterine fibroids, fetal growth retardation, and pregnancy loss (Crain et al. 2008). Perinatal exposure to environmentally relevant doses of BPA has resulted in early vaginal opening and altered estrous cyclicality, overexpression of ER α and progesterone receptor in the endometrium, and an increased number of ovarian antral follicles in mice (Markey et al. 2003, 2005). All of these studies suggest the likelihood of functional consequences such as altered reproductive outcomes in BPA-exposed females.

In the present study, perinatal exposure to BPA resulted in a decline in reproductive capacity in a forced-breeding protocol. BPA 25 µg/kg mice showed a significant decrease in the number of pregnancies, indicating a decline in fertility. We also observed a significant decrease in the cumulative number of pups born to BPA 25 ng/kg, BPA 25 µg/kg, and DES dams relative to controls. The BPA 25 µg/kg group showed a progressive decline in the number of pups delivered, which suggests the possibility of an accelerated reproductive decline. These effects are consistent with previously reported alterations in the ovary, uterus, hypothalamus, and pituitary, the estrogen target tissues that are essential for successful delivery of live pups. Therefore, all these BPA-associated alterations undoubtedly

contribute to the diminished reproductive outcome observed here. The forced breeding protocol does not allow for detailed evaluation of fertilization, implantation, and pregnancy maintenance, including the potential for early pregnancy loss in these animals. The protocol records successful pregnancies and provides information about litter size and composition. Therefore, it is impossible to pinpoint a single cause of the reduced fertility observed with perinatal BPA exposure. The overall pattern observed is suggestive of accelerated reproductive decline, which could have involved changes in the function of any or several of the potential BPA target tissues, including alterations at the hypothalamus/pituitary level linked to aging that could have interfered with the preovulatory LH surge and the number of ova ovulated. This study stresses the need to identify the primary targets and the precise sequence of events leading to compromised reproduction.

In contrast to the significant effects on reproductive capacity revealed over time by this forced breeding experiment, neither the time to first delivery nor the number of pups in the first litter was affected by BPA exposure. Standard toxicological studies on BPA and other endocrine disruptors have routinely analyzed the effects on first pregnancy alone, with no follow-up on potential effects in subsequent pregnancies. As a result, they failed to identify changes in reproductive functions that manifest during subsequent pregnancies, leading to an incomplete evaluation of the effects of BPA exposure on fertility. This was pointed out by Honma et al. (2002), who acknowledged that although DES did not affect reproduction in their experiments, it did affect reproductive parameters in prior forced breeding assays. The forced breeding protocol we used in the present study was adapted from McLachlan et al. (1982), who noted a dose-related decrease in reproductive capacity ranging from a decline of the cumulative number of pups in mice exposed prenatally to 10 ng DES/kg BW/day to a high frequency

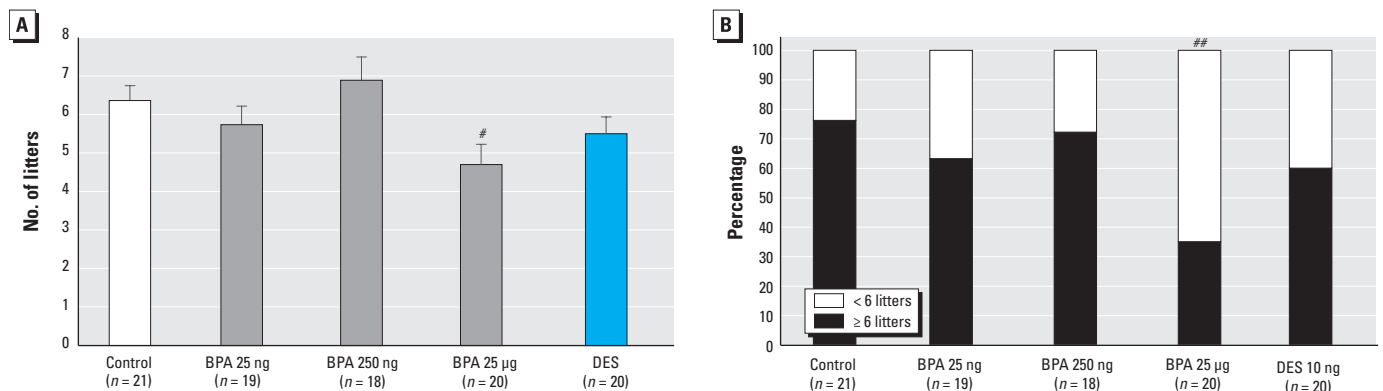


Figure 3. Results after 32 weeks of forced breeding expressed as (A) the total number of litters per dam (mean ± SE) and (B) percentage of CD-1 female mice per group with greater than or fewer than six litters. n , number of dams at the beginning of each experiment.

$p = 0.024$ compared with control, by ANOVA followed by Dunnett's test. ## $p = 0.012$ compared with control, by Fisher's exact test.

of sterility at the highest dose of 100 μg DES/kg BW/day compared with nonexposed controls. In our study, exposure to 10 ng DES/kg BW/day resulted in a significant decline in the cumulative number of pups born to the treated mice relative to controls.

Of interest, the intermediate BPA dose, 250 ng/kg, did not produce significant effects in the forced breeding regimen, whereas both lower and higher doses did. Natural hormones often show nonmonotonic dose-response curves (Amara and Dannies 1983; Sonnenschein et al. 1989; Vandenberg et al. 2006; Wadia et al. 2007), which have also been reported for several endocrine disruptors (Myers and Hessler 2007). These curves are believed to represent a composite of effects over diverse targets (Vandenberg et al. 2006). Nonmonotonic dose-response curves induced by BPA have been documented in human prostate cancer cell line proliferation (Wetherill et al. 2002), rat pituitary and cerebellar cortex cells (Wozniak et al. 2005), and production of adiponectin by human adipocytes (Hugo et al. 2008). Our data now add reproductive capacity to the list of nonmonotonic responses to BPA exposure. However, it is important to note that although the reproductive capacity of the

BPA 250 ng/kg females did not appear to be affected in our forced breeding regimen, it is possible that other experimental protocols would reveal evidence of impaired reproductive function in this treatment group. Indeed, we have observed alterations in estrous cyclicity and antral follicle number (Markey et al. 2003), mammary gland development (Munoz de Toro et al. 2005), and the hypothalamus of females exposed to 250 ng BPA/kg BW/day (Rubin et al. 2006). The forced breeding protocol used here eliminates regular estrous cycles and spontaneous preovulatory LH surges during the 32 weeks of breeding; therefore, it might mask relevant reproductive deficits in this treatment group.

In an earlier study, CD-1 mice exposed to a single bolus injection of a low dose of BPA (25 $\mu\text{g}/\text{kg}$ BW) showed significant levels of BPA residues (4% of the dose) in fetuses, confirming the passage of BPA through the placental barrier (Zalko et al. 2003). The finding with regard to the purity of the BPA used in the present study and all our previous studies strongly indicates that it is BPA and not a contaminant that is responsible for the observed effects in exposed offspring. To date, most reports on BPA toxicity rely on the manufacturer's claim of the purity of the chemical. In

the present study we independently assessed and confirmed the purity of the commercial BPA used. In addition, the analysis indicated that the potential for any impurity to correspond to another phenolic compound is negligible. This finding strongly suggests that the effects observed are due to BPA.

Numerous responses to BPA cited above and responses observed in the present study occur with BPA levels that are below the current U.S. Environmental Protection Agency reference dose for this chemical (50 $\mu\text{g}/\text{kg}$ BW/day) (Welshons et al. 2003; IRIS-USEPA 2002). In fact, in the present study we used doses that were 2- and 2,000-fold below the current safe dose of BPA. Some of the effects observed at low doses are not found at much higher doses (Myers et al. 2009). Therefore, the current practice in regulatory toxicology of testing chemicals at very high doses might not reliably predict the hazards posed by low doses of endocrine-disrupting chemicals such as BPA.

The current rise in the incidence of infertility cases as well as the advanced onset of puberty in girls may be significantly influenced by the exposure to multiple hormonally active chemicals in our environment. Our findings of reproductive effects in mice after perinatal exposure to low doses of BPA suggest the possibility that environmental exposures to low BPA doses might affect human reproductive health as well and support the need to strictly regulate its use.

REFERENCES

- Amara JF, Dannies PS. 1983. 17 β -Estradiol has a biphasic effect on GH cell growth. *Endocrinology* 112:1141–1143.
- Baird DD, Newbold R. 2005. Prenatal diethylstilbestrol (DES) exposure is associated with uterine leiomyoma development. *Reprod Toxicol* 20:81–84.
- Bateson P, Barker D, Clutton-Brock T, Deb D, D'Udine B, Foley RA, et al. 2004. Developmental plasticity and human health. *Nature* 430:419–421.
- Blair RM, Fang H, Branham WS, Hass BS, Dial SL, Moland CL, et al. 2001. The estrogen receptor relative binding affinities of 188 natural and xenochemicals: structural diversity of ligands. *Toxicol Sci* 54:138–153.
- Calafat AM, Weuve J, Ye X, Jia LT, Hu H, Ringer S, et al. 2009. Exposure to bisphenol A and other phenols in neonatal intensive care unit premature infants. *Environ Health Perspect* 117:639–644.
- Calafat AM, Ye X, Wong LY, Reidy JA, Needham LL. 2008. Exposure of the U.S. population to bisphenol A and 4-*tert*-octylphenol: 2003–2004. *Environ Health Perspect* 116:39–44.
- Crain DA, Janssen SJ, Edwards TM, Heindel J, Ho S-M, Hunt P, et al. 2008. Female reproductive disorders: the roles of endocrine-disrupting compounds and developmental timing. *Fertil Steril* 90:911–940.
- Diamanti-Kandaraki E, Bourguignon JP, Giudice LC, Hauser R, Prins GS, Soto AM, et al. 2009. Endocrine-disrupting chemicals: an Endocrine Society scientific statement. *Endocr Rev* 30:293–342.
- Gilbert SF, Epel D. 2009. *Ecological Developmental Biology: Integrating Epigenetics, Medicine, and Evolution*. Sunderland, MA: Sinauer Associates.
- Honma S, Suzuki A, Buchanan DL, Katsu Y, Watanabe H, Iguchi T. 2002. Low dose effects of in utero exposure to bisphenol A and diethylstilbestrol on female mouse reproduction. *Reprod Toxicol* 16:117–122.
- Howdeshell KL, Hotchkiss AK, Thayer KA, Vandenberg JG, vom Saal FS. 1999. Exposure to bisphenol A advances puberty. *Nature* 401:763–764.

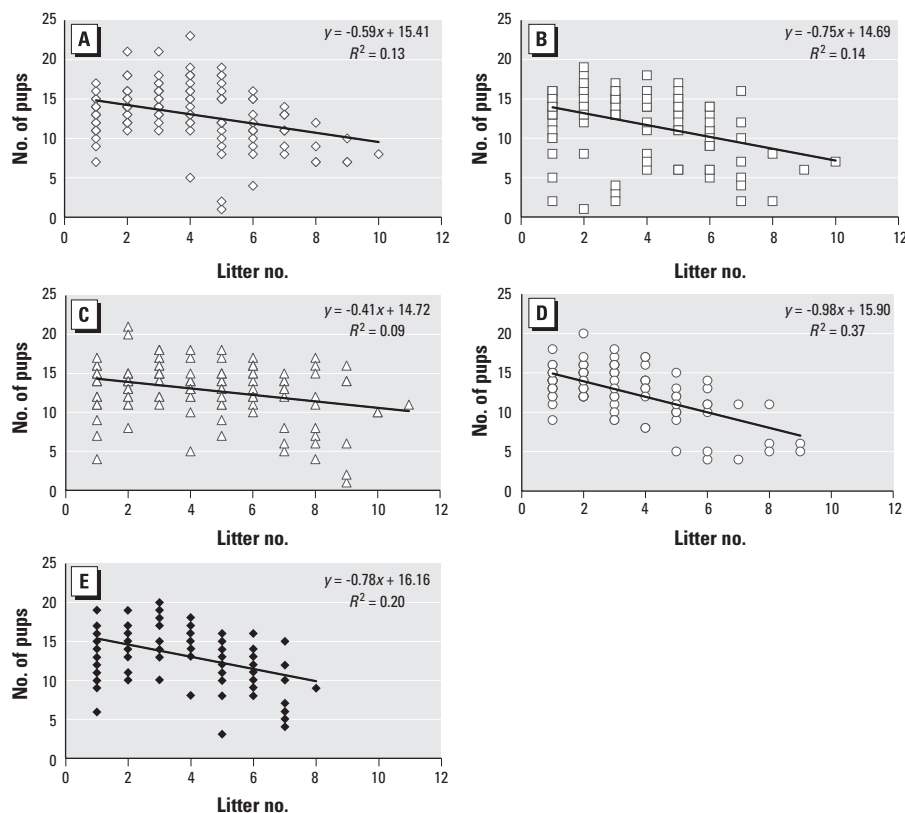


Figure 4. Scatterplot of the number of pups delivered by each dam per litter for control (A; $n = 21$), BPA 25 ng/kg (B; $n = 19$), BPA 250 ng/kg (C; $n = 20$), BPA 25 $\mu\text{g}/\text{kg}$ (D; $n = 20$), and DES 10 ng/kg (E; $n = 22$) groups. n , number of dams at the beginning of each experiment. Each data point may represent more than one litter because of overlapping data. The slope and the correlation coefficients (R) of the trend lines were significantly different for the BPA 25 $\mu\text{g}/\text{kg}$ group compared with both the control and BPA 250 ng/kg groups.

- Hugo ER, Borchherding DC, Gersin KS, Loftus J, Ben-Jonathan N. 2008. Prolactin release by adipose explants, primary adipocytes, and LS14 adipocytes. *J Clin Endocrinol Metab* 93:4006–4012.
- Ikezuki Y, Tsutsumi O, Takai Y, Kamei Y, Taketani Y. 2002. Determination of bisphenol A concentrations in human biological fluids reveals significant early prenatal exposure. *Hum Reprod* 17:2839–2841.
- Integrated Risk Information System (IRIS). Bisphenol A. (CASRN 80-05-7), Vol 2002. US-EPA IRIS Substance File. Available: <http://www.epa.gov/iris/subst/0356.htm> [accessed 28 February 2011].
- Jaeg JP, Perdu E, Dolo L, Debrauwer L, Cravedi JP, Zalko D. 2004. Characterization of new bisphenol A metabolites produced by CD1 mice liver microsomes and S9 fractions. *J Agric Food Chem* 52:4935–4942.
- Jensen TK, Sobotka T, Hansen MA, Pedersen AT, Lutz W, Skakkebaek NE. 2008. Declining trends in conception rates in recent birth cohorts of native Danish women: a possible role of deteriorating male reproductive health. *Int J Androl* 31:81–92.
- Jouannet P, Wang C, Eustache F, Kold-Jensen T, Auger J. 2001. Semen quality and male reproductive health: the controversy about human sperm concentration decline. *APMIS* 109:333–344.
- Maffini MV, Rubin BS, Sonnenschein C, Soto AM. 2006. Endocrine disruptors and reproductive health: the case of bisphenol A. *Mol Cell Endocrinol* 254–255:179–186.
- Markey CM, Coombs MA, Sonnenschein C, Soto AM. 2003. Mammalian development in a changing environment: exposure to endocrine disruptors reveals the developmental plasticity of steroid-hormone target organs. *Evol Dev* 5:1–9.
- Markey CM, Wadia PR, Rubin BS, Sonnenschein C, Soto AM. 2005. Long-term effects of fetal exposure to low doses of the xenoestrogen bisphenol-A in the female mouse genital tract. *Biol Reprod* 72:1344–1351.
- McLachlan JA, Newbold RR, Bullock BC. 1980. Long-term effects on the female mouse genital tract associated with prenatal exposure to diethylstilbestrol. *Cancer Res* 40:3988–3999.
- McLachlan JA, Newbold RR, Shah HC, Hogan MD, Dixon RL. 1982. Reduced fertility in female mice exposed transplacentally to diethylstilbestrol (DES). *Fertil Steril* 38:364–371.
- Munoz de Toro MM, Markey CM, Wadia PR, Luque EH, Rubin BS, Sonnenschein C, et al. 2005. Perinatal exposure to bisphenol A alters peripubertal mammary gland development in mice. *Endocrinology* 146:4138–4147.
- Myers JP, Zoeller RT, vom Saal FS. 2009. A clash of old and new scientific concepts in toxicity, with important implications for public health. *Environ Health Perspect* 117:1652–1655.
- Myers P, Hessler W. 2007. Does 'the dose make the poison?' Available: <http://www.environmentalhealthnews.org/sciencebackground/2007/2007-0415nmdrc.html> [accessed 30 April 2007].
- Newbold RR. 2008. Prenatal exposure to diethylstilbestrol (DES). *Fertil Steril* 89(2 Suppl):e55–e56; doi:10.1016/j.fertnstert.2008.01.062 [Online 4 March 2008].
- Newbold RR, Padilla-Banks E, Jefferson WN, Heindel JJ. 2008. Effects of endocrine disruptors on obesity. *Int J Androl* 31:201–208.
- Newbold RR, Tyrey S, Haney AF, McLachlan JA. 1983. Developmentally arrested oviduct: a structural and functional defect in mice following prenatal exposure to diethylstilbestrol. *Teratology* 27:417–426.
- Olea N, Pulgar R, Perez P, Olea-Serrano F, Rivas A, Novillo-Fertrell A, et al. 1996. Estrogenicity of resin-based composites and sealants used in dentistry. *Environ Health Perspect* 104:298–305.
- Padmanabhan V, Siefert K, Ransom S, Johnson T, Pinkerton J, Anderson L, et al. 2008. Maternal bisphenol-A levels at delivery: a looming problem? *J Perinatol* 28:258–263.
- Rubin BS, Lenkowski JR, Schaeberle CM, Vandenberg LN, Ronsheim PM, Soto AM. 2006. Evidence of altered brain sexual differentiation in mice exposed perinatally to low environmentally relevant levels of bisphenol A. *Endocrinology* 147:3681–3691.
- Rubin BS, Murray MK, Damassa DA, King JC, Soto AM. 2001. Perinatal exposure to low doses of bisphenol A affects body weight, patterns of estrous cyclicity and plasma LH levels. *Environ Health Perspect* 109:675–680.
- Schönfelder G, Wittfoht W, Hopp H, Talsness CE, Paul M, Chahoud I. 2002. Parent bisphenol A accumulation in the human maternal–fetal–placental unit. *Environ Health Perspect* 110:A703–A707.
- Silva E, Rajapakse N, Kortenkamp A. 2002. Something from "nothing"—eight weak estrogenic chemicals combined at concentrations below NOECs produce significant mixture effects. *Environ Sci Technol* 36:1751–1756.
- Skakkebaek NE. 1998. Trends in male reproductive health. Environmental aspects. *Adv Exp Med Biol* 444:1–2.
- Skakkebaek NE, Rajpert-DeMeyts E, Main KM. 2001. Testicular dysgenesis syndrome: an increasingly common developmental disorder with environmental aspects. *Hum Reprod* 16:972–978.
- Sonnenschein C, Olea N, Pasanen ME, Soto AM. 1989. Negative controls of cell proliferation: human prostate cancer cells and androgens. *Cancer Res* 49:3474–3481.
- Soto AM, Chung KL, Sonnenschein C. 1994. The pesticides endosulfan, toxaphene, and dieldrin have estrogenic effects on human estrogen sensitive cells. *Environ Health Perspect* 102:380–383.
- Soto AM, Fernandez MF, Luizzi MF, Oles Karasko AS, Sonnenschein C. 1997. Developing a marker of exposure to xenoestrogen mixtures in human serum. *Environ Health Perspect* 105:647–654.
- Soto AM, Lin T-M, Justicia H, Silvia RM, Sonnenschein C. 1992. An "in culture" bioassay to assess the estrogenicity of xenobiotics. In: *Chemically Induced Alterations in Sexual Development: The Wildlife/Human Connection* (Colborn T, Clement C, eds). Princeton, NJ:Princeton Scientific Publishing, 295–309.
- Soto AM, Sonnenschein C. 2010. Environmental causes of cancer: endocrine disruptors as carcinogens. *Nat Rev Endocrinol* 6:363–370.
- Sun Y, Irie M, Kishikawa N, Wada M, Kuroda N, Nakashima K. 2004. Determination of bisphenol A in human breast milk by HPLC with column-switching and fluorescence detection. *Biomed Chromatogr* 18:501–507.
- Thomas P, Dong J. 2006. Binding and activation of the seven-transmembrane estrogen receptor GPR30 by environmental estrogens: a potential novel mechanism of endocrine disruption. *J Steroid Biochem Mol Biol* 102:175–179.
- Tollefsen KE. 2002. Interaction of estrogen mimics, singly and in combination, with plasma sex steroid-binding proteins in rainbow trout (*Oncorhynchus mykiss*). *Aquat Toxicol* 56:215–225.
- Vandenberg LN, Hauser R, Marcus M, Olea N, Welshons WV. 2007. Human exposure to bisphenol A (BPA). *Reprod Toxicol* 24:139–177.
- Vandenberg LN, Wadia PR, Schaeberle CM, Rubin BS, Sonnenschein C, Soto AM. 2006. The mammary gland response to estradiol: monotonic at the cellular level, non-monotonic at the tissue-level of organization? *J Steroid Biochem Mol Biol* 101:263–274.
- Wadia PR, Vandenberg LN, Schaeberle CM, Rubin BS, Sonnenschein C, Soto AM. 2007. Perinatal bisphenol A exposure increases estrogen sensitivity of the mammary gland in diverse mouse strains. *Environ Health Perspect* 115:592–598.
- Welshons WV, Nagel SC, vom Saal FS. 2006. Large effects from small exposures. III. Endocrine mechanisms mediating effects of bisphenol A at levels of human exposure. *Endocrinology* 147:S56–S69.
- Welshons WV, Rottinghaus GE, Nonneman DJ, Dolan-Timpe M, Ross PF. 1990. A sensitive bioassay for detection of dietary estrogens in animal feeds. *J Vet Diagn Invest* 2(4):268–273.
- Welshons WV, Thayer KA, Judy BM, Taylor JA, Curran EM, vom Saal FS. 2003. Large effects from small exposures: I. Mechanisms for endocrine-disrupting chemicals with estrogenic activity. *Environ Health Perspect* 111:994–1006.
- Wetherill YB, Petre CE, Monk KR, Puga A, Knudsen KE. 2002. The xenoestrogen bisphenol A induces inappropriate androgen receptor activation and mitogenesis in prostatic adenocarcinoma cells. *Mol Cancer Ther* 1:515–524.
- Wozniak AL, Bulayeva NN, Watson CS. 2005. Xenoestrogens at picomolar to nanomolar concentrations trigger membrane estrogen receptor-alpha-mediated Ca²⁺ fluxes and prolactin release in GH3/B6 pituitary tumor cells. *Environ Health Perspect* 113:431–439.
- Ye X, Pierik FH, Angerer J, Meltzer HM, Jaddoe VW, Tiemeier H, et al. 2009. Levels of metabolites of organophosphate pesticides, phthalates, and bisphenol A in pooled urine specimens from pregnant women participating in the Norwegian Mother and Child Cohort Study (MoBa). *Int J Hyg Environ Health* 212:481–491.
- Zalko D, Soto AM, Dolo L, Dorio C, Ratahoo E, Debrauwer L, et al. 2003. Biotransformations of bisphenol A in a mammalian model: answers and new questions raised by low-dose metabolic fate studies in pregnant CD1 mice. *Environ Health Perspect* 111:309–319.