



**HAL**  
open science

## Prevalence of enterotoxigenic and Shiga toxin-producing *Escherichia coli* in pigs slaughtered in Mato Grosso, Brazil

Rodrigo Prado Martins, Maria Cristina da Silva, Valéria Dutra, Luciano Nakazato, Domingos da Silva Leite

### ► To cite this version:

Rodrigo Prado Martins, Maria Cristina da Silva, Valéria Dutra, Luciano Nakazato, Domingos da Silva Leite. Prevalence of enterotoxigenic and Shiga toxin-producing *Escherichia coli* in pigs slaughtered in Mato Grosso, Brazil. *Journal of Infection in Developing Countries*, 2011, 5 (2), pp.123-126. 10.3855/jidc.1217 . hal-02649973

**HAL Id: hal-02649973**

**<https://hal.inrae.fr/hal-02649973>**

Submitted on 29 May 2020

**HAL** is a multi-disciplinary open access archive for the deposit and dissemination of scientific research documents, whether they are published or not. The documents may come from teaching and research institutions in France or abroad, or from public or private research centers.

L'archive ouverte pluridisciplinaire **HAL**, est destinée au dépôt et à la diffusion de documents scientifiques de niveau recherche, publiés ou non, émanant des établissements d'enseignement et de recherche français ou étrangers, des laboratoires publics ou privés.

## Prevalence of enterotoxigenic and Shiga toxin-producing *Escherichia coli* in pigs slaughtered in Mato Grosso, Brazil

Rodrigo Prado Martins<sup>1</sup>, Maria Cristina da Silva<sup>1</sup>, Valéria Dutra<sup>1</sup>, Luciano Nakazato<sup>1</sup>, Domingos da Silva Leite<sup>2</sup>

<sup>1</sup>Departamento de Clínica Médica Veterinária, Universidade Federal de Mato Grosso, Brazil

<sup>2</sup>Departamento de Microbiologia e Imunologia, Instituto de Biologia, Universidade Estadual de Campinas, Brazil

### Abstract

**Introduction:** This study aimed to estimate the prevalence of enterotoxigenic *Escherichia coli* (ETEC) and Shiga toxin-producing *Escherichia coli* (STEC) strains in pigs slaughtered in abattoirs located in the state of Mato Grosso, Brazil.

**Methodology:** Intestinal samples from 74 animals were aseptically dissected and lumen content was plated on MacConkey agar. Confluent colonies from each plate were screened for the presence of ETEC and STEC strains by PCR assays.

**Results:** It was verified that the prevalence of STEC and ETEC carriers was 1.35% and 9.46% respectively. One (1.35%) of the 74 samples tested was positive for the stx2 gene, and seven (9.46%) for st1, of which two (2.70%) were also positive for lt1.

**Conclusion:** The results provided represent a benchmark for future research on pathogenic *E. coli* of porcine origin in Mato Grosso.

**Key words:** STEC; ETEC; PCR; slaughterhouse; Mato Grosso

*J Infect Dev Ctries* 2011; 5(2):123-126.

(Received 18 May 2010 – Accepted 02 July 2010)

Copyright © 2011 Martins *et al.* This is an open-access article distributed under the Creative Commons Attribution License, which permits unrestricted use, distribution, and reproduction in any medium, provided the original work is properly cited.

### Introduction

*Escherichia coli* is one of the main inhabitants of the intestinal tract of mammalian species [1]. Until the 1950s this microorganism was regarded as a normal non-pathogenic cohabitant of the enteric tract [2]. However, during the last decades, a remarkable amount of research has established *E. coli* among the important etiological agents of enteritis and several extraintestinal diseases [3].

Enterotoxigenic *E. coli* (ETEC) is considered a major cause of infantile diarrhoea in developing countries and is frequently associated with traveller's diarrhoea [4]. In pigs, ETEC is a major cause of postweaning diarrhoea [5]. This *E. coli* pathotype causes diarrhoea by adhering to intestinal mucosa through its unique colonization factors and producing either heat-labile enterotoxins (LT-I and LT-II), heat-stable enterotoxins (STa and STb), or both [4]. Human diarrhoea due to ETEC, like other diarrhoeal illnesses, may be the result of ingestion of contaminated food or water [3]. However, due to the species-specific binding of the fimbrial adhesins, ETEC is not regarded as a zoonotic agent [2].

Another group of pathogenic *E. coli*, defined as Shiga toxin-producing *E. coli* (STEC), is a naturally occurring organism in the gut microbiota of cattle [6] and has been isolated from the intestine of other animals such as sheep [7] and goats [8]. According to Wasteson [2], STEC has emerged as an important zoonotic food-borne pathogen. Infection in humans is mainly associated with the ingestion of foods contaminated with these zoonotic bacteria, and clinical signs include watery diarrhoea, haemorrhagic colitis (HC), and/or haemolytic uraemic syndrome (HUS) [3]. The ability of STEC strains to cause severe disease is related to the production of one or more types of Shiga toxin (Stx1, Stx2 or variants) [6]. Pigs are not considered a major source of STEC [9] since its prevalence is usually very low in this species [1]. However, Shiga toxin-positive bacteria have been isolated from pork and some pork products involved in human infections [10]. It has been reported that, besides acting as sources of contamination of STEC-free animals via faeces [6], STEC carriers can introduce this pathogen into slaughterhouses [11].

**Table 1.** Sequences, amplicon sizes and annealing temperatures of oligonucleotide primers used

Gene	Sequence (5' – 3')	AT <sup>a</sup> (°C)	Amplicon size (bp)	Reference
<i>stx1</i>	AGGTTGCAGCTCTCTTTGAATA TGCAAACAAATTATCCCCTGAG	53	364	[16]
<i>stx2</i>	GGGCAGTTATTTTGCTGTGGA GTATCTGCCTGAAGCGTAA	53	386	[16]
<i>lt1</i>	TATCCTCTCTATATGCACAG CTGTAGTGGAAAGCTGTTATA	48	480	[16]
<i>st1</i>	TCCGTGAAACAACATGACGG ATAACATCCAGCACAGGCAG	60	244	[16]

<sup>a</sup> Annealing temperature

In Brazil, few epidemiologic studies on the occurrence of STEC have been conducted [12] and very few laboratories are able to perform STEC screening [13]. Furthermore, studies concerning ETEC from swine have focused on weaned or newborn pigs [14] and data regarding finishing pigs are not available. Given these considerations, this study aimed to estimate the prevalence of ETEC and STEC strains in the intestines of pigs slaughtered in abattoirs located in the state of Mato Grosso, Brazil, by PCR assays.

## Methodology

### Sample collection

Fragments of intestine (n = 74) were collected from pigs slaughtered in abattoirs located in the state of Mato Grosso, Brazil. Each fragment of approximately 5 cm was sampled from a different animal immediately after evisceration. Samples were placed in sterile plastic bags and kept under refrigeration until required for laboratory procedures (less than eight hours). To estimate the prevalence of ETEC and STEC carriers, a statistically adequate sample size was calculated on the basis of the number of 800,000 pigs slaughtered per year, an expected prevalence of 5%, a 95% confidence level and an accuracy of 5% using Win Episcope 2.0 (Universidad de Zaragoza, Zaragoza, Spain).

### Enrichment and plating procedures

Each intestine fragment was aseptically dissected and a sterile swab was used to collect content from the lumen. All swabs were enriched in 10 ml of buffered peptone water (Oxoid, Basingstoke, Hampshire, United Kingdom) and incubated in aerobiosis at 37° C for 24 hours. Afterward, about 10 µl of the culture was

streaked on MacConkey agar (Oxoid, United Kingdom) plates and incubated in aerobiosis at 37°C for 24 hours.

### Screening for STEC and ETEC carriers by PCR assays

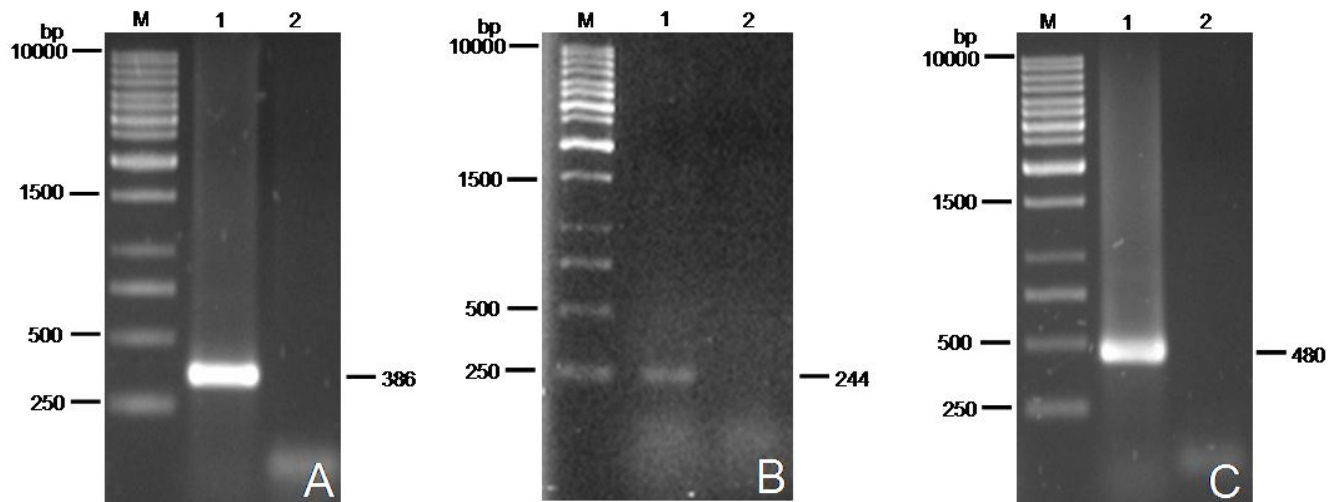
To detect STEC and ETEC strains, a loopful of confluent colonies from each MacConkey plate was tested by PCR assays for the presence of genes coding for Shiga toxin (*stx1* and *stx2*), heat-labile (*lt1*) and heat-stable (*st1*) enterotoxins. For DNA extractions, colonies collected were suspended in 200 µl of Ultra High Quality (UHQ)-water, boiled for 10 minutes and subsequently centrifuged at 10,000 x g for 2 minutes. The supernatant was used as template for PCR. PCR assays were conducted as described by Siqueira *et al.* [15]. Sequences, predicted sizes of the products, and specific annealing temperatures of the primers employed are described in Table 1. *E. coli* K12C600 was used as a negative control for the reactions. The STEC strains H30 (O26:H11) and J2 (O157:H-) were used as positive controls for *stx1* and *stx2* respectively. For the *lt1* and *st1* genes, the ETEC strain H100407 was employed as a positive control.

Pigs were considered STEC or ETEC carriers as follows: animals harbouring strains positive for *stx1* and/or *stx2* were considered STEC carriers; those harbouring isolates positive for *lt1* and/or *st1* were considered ETEC carriers.

## Results and discussion

The observed prevalence of STEC and ETEC carriers was 1.35% and 9.46% respectively. One (1.35%) of the 74 samples was positive for *stx2*, and seven (9.46%) were positive for *st1*, of which two

**Figure 1.** Amplification of *stx2* (A), *stx1* (B) and *lt1* (C) genes by PCR. Lanes M are DNA size markers (GeneRuler™ 1 kb DNA Ladder, Fermentas, USA). Lanes 1 and 2 are representative positive and negative strains respectively. bp – base pairs.



(2.70%) were also positive for the *lt1* gene (Figure 1). None of the samples tested positive for the *stx1* gene.

The low prevalence of STEC carriers asserted in this study is in agreement with preceding records. Leung *et al.* [9] reported the presence of STEC in 2.1% of pigs slaughtered in Hong Kong, and Oporto *et al.* [7] observed the absence of STEC in faecal samples from 17 Spanish swine herds. Bonardi *et al.* [17] and Heuvelink *et al.* [18] detected the occurrence of *E. coli* O157:H7, a highly human-virulent STEC strain, in 0.7% of pigs slaughtered in both Italian and Dutch abattoirs.

Results regarding ETEC revealed a higher prevalence when compared to STEC. It is well established that ETEC from animals normally do not infect humans, since these strains harbour colonization factors with remarkable host specificity [2]. However, infections by this *E. coli* pathotype have an important impact on porcine health and negative implications in the efficiency of porcine production systems [19]. In pigs, ETEC is often implicated in cases of postweaning diarrhoea [4]. Nevertheless, this pathogen is observed less frequently in the faeces of healthy animals [20] and rarely causes clinical infections in adult pigs [21]. Interestingly, almost 10% of the animals analysed in this study were ETEC carriers, and this result could indicate that adult carriers are sources of ETEC in piggeries from Mato Grosso. Faecal contamination is a contributing factor to the persistence of ETEC in

the environment, and it also contributes to the transmission of this pathogen to animals through the contamination of food crops and water sources or from direct contact [19]. Therefore, it could be inferred that control of finishing pigs may help in the reduction of infections by ETEC at the herd level.

The low prevalence of STEC carriers asserted in this study suggests that slaughter pigs do not represent an important source of STEC in Mato Grosso. However, further research is necessary to better understand the role of carriers in the epidemiology of ETEC infections in pigs from this region.

## References

1. Fairbrother JM and Nadeau É (2006) *Escherichia coli*: on-farm contamination of animals. Rev Sci Tech 25: 555-569.
2. Wasteson Y (2001) Zoonotic *Escherichia coli*. Acta Vet Scand 95: 79-84.
3. Kaper JB, Nataro JP, Mobley LT (2004) Pathogenic *Escherichia coli*. Nat Rev Microbiol 2: 123-140.
4. Fleckenstein JM, Hardwidge PR, Munson GP, Rasko DA, Sommerfelt H, Steinsland H (2010) Molecular mechanisms of enterotoxigenic *Escherichia coli* infection. Microbes Infect 12: 89-98.
5. Chen X, Gao S, Jiao X, Liu XF (2004) Prevalence of serogroups and virulence factors of *Escherichia coli* strains isolated from pigs with postweaning diarrhoea in eastern China. Vet Microbiol 103: 13-20.
6. Gyles CL (2007) Shiga toxin-producing *Escherichia coli*: An overview. J Anim Sci 85: E45-E62.
7. Oporto B, Esteban JI, Aduriz G, Juste RA, Hurtado A (2008) *Escherichia coli* O157:H7 and Non-O157 Shiga Toxin-producing *E. coli* in Healthy Cattle, Sheep and Swine Herds in Northern Spain. Zoonoses Public Health 55: 73-81.

8. Horcajo P, Domínguez-Bernal G, De La Fuente R, Ruiz-Santa-Quiteria JA, Orden JA (2010) Association of *vt1c* with verotoxin-producing *Escherichia coli* from goats and sheep. J Vet Diagn Invest 22: 332-334.
9. Leung PHM, Yam WC, Ng WWS, Peiris JSM (2001) The prevalence and characterization of verotoxin-producing *Escherichia coli* isolated from cattle and pigs in an abattoir in Hong Kong. Epidemiol Infect 126: 173-179.
10. Bouvet J, Bavai C, Rossel R, Le Roux A, Montet MP, Ray-Gueniot S, Mazuy C, Atrache V, Vernozy-Rozand C (2002) Effects of cutting process on pork meat contamination by verotoxin-producing *Escherichia coli* (VTEC) and *E. coli* O157:H7. Int J Food Microbiol 77: 91-97.
11. Bouvet J, Montet MP, Rossel R, Le Roux A, Bavai C, Ray-Gueniot S, Mazuy C, Atrache V, Vernozy-Rozand C (2002) Effects of slaughter processes on pig carcass contamination by verotoxin-producing *Escherichia coli* and *E. coli* O157:H7. Int J Food Microbiol 77: 99-108.
12. Pigatto CP, Schocken-Iturrino RP, Pedrosa FO, Comarella L, Irino K, Kato MAMF, Farah SMSS, Warth JF, Fadel-Pichetch CMT (2008) Virulence properties and microbial susceptibility of Shiga Toxin-producing *Escherichia coli* strains isolated from healthy cattle from Paraná State, Brazil. Can J Microbiol 54: 588-593.
13. De Toni F, Souza EM, Pedrosa FO, Klassen G, Irino K, Un Rigo L, Steffens MBR, Fialho OB, Farah SMSS, Fadel-Picheth CMT (2009) A prospective study on Shiga toxin-producing *Escherichia coli* in children with diarrhoea in Parana State, Brazil. Lett Appl Microbiol 48: 645-647.
14. Martins MF, Martinez-Rossi NM, Ferreira A, Brocchi M, Yano T, Castro AFP, Silveira WD (2000) Pathogenic characteristics of *Escherichia coli* strains isolated from newborn piglets with diarrhea in Brazil. Vet Microbiol 76: 51-59.
15. Siqueira AK, Ribeiro MG, Leite DS, Tiba MR, Moura C, Lopes MD, Prestes NC, Salerno T, Silva AV (2009) Virulence factors in *Escherichia coli* strains isolated from urinary tract infection and pyometra cases and from feces of healthy dogs. Res Vet Sci 86: 206-210.
16. Salvadori MR, Valadares GF, Leite DS, Blanco, JE, Yano T (2003) Virulence factors of *Escherichia coli* isolated from calves with diarrhea in Brazil. Braz J Microbiol 34: 230-235.
17. Bonardi S, Brindani F, Pizzin, G, Lucidi L, D'Incau M, Liebana E, Morabito S (2003). Detection of *Salmonella* spp., *Yersinia enterocolitica* and verocytotoxin-producing *Escherichia coli* O157 in pigs at slaughter in Italy. Int J Food Microbiol 85: 101-110.
18. Heuvelink AE, Zwartkruis-Nahuis JTM, van den Biggelaar FLAM, van Leeuwen WJ, de Boer E (1999) Isolation and characterization of verocytotoxin-producing *Escherichia coli* O157 from slaughter pigs and poultry. Int J Food Microbiol 52: 67-75.
19. Nagy B, Fekete PZ (1999) Enterotoxigenic *Escherichia coli* (ETEC) in farm animals. Vet Res 30: 259-284.
20. Osek J (1999) Prevalence of virulence factors of *Escherichia coli* strains isolated from diarrheic and healthy piglets after weaning. Vet Microbiol 68: 209-217.
21. Runnels PL, Moon HW, Schneider RA (1980) Development of resistance with host age to adhesion of K99+ *Escherichia coli* to isolated intestinal epithelial cells. Infect Immun 28: 298-300.

#### Corresponding author

Rodrigo Prado Martins  
Campus Universitario Rabanales  
Edificio Gregor Mendel, Departamento de Genética, 14071  
Córdoba, Spain  
Telephone: +34 957218730; Fax: +34 957218730  
Email: z82prmar@uco.es

**Conflict of interests:** No conflict of interests is declared.