



HAL
open science

Autumnal nitrogen nutrition affects the C and N storage and architecture of young peach trees

Marie Odile M. O. Jordan, Gilles G. Vercambre, Jacques Le Bot, Stephane Adamowicz, Laurent Gomez, Loic L. Pagès

► To cite this version:

Marie Odile M. O. Jordan, Gilles G. Vercambre, Jacques Le Bot, Stephane Adamowicz, Laurent Gomez, et al.. Autumnal nitrogen nutrition affects the C and N storage and architecture of young peach trees. *Trees - Structure and Function*, 2011, 25 (2), pp.333-344. 10.1007/s00468-010-0509-7 . hal-02650471

HAL Id: hal-02650471

<https://hal.inrae.fr/hal-02650471>

Submitted on 29 May 2020

HAL is a multi-disciplinary open access archive for the deposit and dissemination of scientific research documents, whether they are published or not. The documents may come from teaching and research institutions in France or abroad, or from public or private research centers.

L'archive ouverte pluridisciplinaire **HAL**, est destinée au dépôt et à la diffusion de documents scientifiques de niveau recherche, publiés ou non, émanant des établissements d'enseignement et de recherche français ou étrangers, des laboratoires publics ou privés.



Distributed under a Creative Commons Attribution - NonCommercial 4.0 International License

1 **Autumnal nitrogen nutrition affects the C and N storage and architecture of young**
2 **peach trees.**

3
4
5 Marie-Odile JORDAN *¹, Gilles VERCAMBRE¹, Jacques LE BOT¹, Stéphane
6 ADAMOWICZ¹, Laurent GOMEZ¹, Loïc PAGÈS¹

7
8
9 ¹: UR1115 Plantes et systèmes de culture horticoles, INRA, F-84000 Avignon (France)

10
11 *** Full address for corresponding author:**

12 Marie-Odile JORDAN

13 INRA, Plantes et systèmes de culture horticoles

14 Domaine Saint-Paul

15 Agroparc

16 84914 AVIGNON Cedex 9

17 moj@avignon.inra.fr; phone: (33)4.32.72.24.55; fax: (33)4.32.72.24.32

18
19
20 **Running head: Use of autumnal N uptake by young peach trees**

21

22

23

24

25

1 **Abstract:** Nitrogen fertilisation is a regular practice in orchards. Its effect on tree
2 development, N and C acquisition and allocation were evaluated simultaneously, while
3 coupling on the same trees *in situ* measurements of N uptake and shoot development and
4 destructive determinations of organ composition in N and Total Non structural Carbohydrates
5 (TNC). An hydroponic set-up was designed that could grow young peach trees at constant
6 NO₃ concentration while measuring N uptake. Forty-eight trees were raised outdoors under
7 excessive N supply. Between October 2 and December 7, half of them were then N-limited to
8 reduce N uptake by 75%. Organ N concentrations remained stable in the controls but were
9 halved in N-limited trees. Growth (390 vs. 353 g DW tree⁻¹) was less affected by the
10 treatment than N uptake (10.6 vs. 2.7 g N tree⁻¹). Growth was affected only in terms of
11 axillary bud development, which was restricted to the median and upper crown parts. The
12 number of buds which transformed into elongating axes (44 vs. 84 tree⁻¹) was halved, thus
13 reducing leaf area by one third (10464 vs. 15568 cm²). Tree TNC content was not impacted.
14 The difference in C acquisition likely balanced the C costs of N uptake. In N-limited trees,
15 more TNC was stored as starch (73% vs. 56%), and the allocation patterns of TNC and N
16 were altered in favour of the roots. Our results provide deeper insights into the tree integrated
17 response to autumnal N fertilisation, focusing on an alteration of the balance between storage
18 and growth.

19
20
21 **Keywords:** Nitrogen fertilisation, N uptake, plant architecture, N allocation, Non-structural
22 Carbohydrate.

23
24 **Abbreviations:** C: Carbon, CER_{max}: leaf maximal CO₂ exchange rate, DW: Dry weight, N:
25 Nitrogen, TNC: Total Non-structural Carbohydrate.

26

1 Introduction

2
3 Nitrogen fertilisation is a regular practice in orchards that affects tree development (Lobit et
4 al. 1999; Jordan et al. 2009). The effects vary with the time of application (Ampossah et al.
5 2004) and are not evenly distributed within the tree thus altering tree shape, the root to shoot
6 ratio and the balance between vegetative growth and fruit production (Cheng et al. 2002;
7 Jordan et al. 2009). Nitrogen uptake and allocation are also affected by N fertilisation
8 (Rosecrance et al. 1998, Cheng et al. 2002), and C acquisition and allocation are in turn
9 modified as a result of changes in tree growth (Kubiske et al. 1998; Veberic et al. 2002).
10 Evaluating fertilisation practices implies taking account of: (i) N acquisition, (ii) N
11 partitioning among and within tree constitutive organs (iii) N allocation between growth and
12 storage, and possibly (iv) C acquisition and allocation. Most studies to date have been limited
13 to one of these aspects and have not provided an integrated insight into the tree response to N
14 fertilisation.

15 Tree response to applied N varies with tree N status, a point that was not adequately
16 addressed by many prior experiments (Niederholtzer et al. 2001, Millard and Proe 1993) and
17 could explain inconsistencies in the literature (Bollmark et al. 1999, Niederholtzer et al. 2001,
18 Von Fircks et al. 1998). Nitrogen status altered N uptake (Cheng et al. 2002), TNC (Total
19 Non structural Carbohydrates) accumulation (Cheng et al. 2004) and the trade-off between
20 growth and storage (Sanz Perez et al. 2007; Gloser et al. 2009) which is generally assumed to
21 be mainly determined by plant phenology. In early spring, the first growth flush of tree is
22 sustained by the mobilisation of N stores (Millard 1996, Jordan et al. 2009). Thereafter, N
23 uptake from the soil becomes significant enough to sustain current growth (Lobit et al. 2001,
24 Cooke et al. 2005) over spring and summer, and to ensure perennial storage in late summer
25 and autumn (Millard 1996, Tagliavini et al. 1997, Sanz Perez et al. 2007). Thus, the synthesis
26 of storage protein in trees starts after fruit harvest (Gomez and Faurobert 2002). It is however

1 admitted that under poor nutritional conditions, trees export most of their leaf N before
2 abscission to contribute to winter storage (Millard and Proe 1993, Cheng et al. 2002), while
3 growth continues until late autumn (Kubiske et al. 1998, Kealke et al. 2005) and competes
4 with storage for C and N allocation (Cheng et al. 2002).

5 In most nutrient budget studies, growth is assessed from an increase in biomass rather
6 than tree development. Studying plant development implies focusing on the relevant
7 processes (i.e. organ initiation, emission and growth per se). Thus N nutrition modifies not
8 only tree size but also tree shape, and can therefore contribute to controlling tree architecture
9 in association with pruning. During spring and summer, N supply affects shoot growth by
10 modulating the emission of new axes (number and position within the crown) and the duration
11 of growth flushes (Lobit et al. 2001, Jordan et al. 2009, Médiène et al. 2002), but architectural
12 data are missing for autumn, when growth is supposed to decline. Indeed, late emerging axes
13 are of little importance to growers because of their small size, their position in the crown
14 outer parts and the quasi-absence of flower buds (Boonprakob et al. 1996).

15 Few studies have adequately considered the heterogeneity of the plant response to N
16 supply linked to the spatial distribution of organs within the crown. This could be of prime
17 importance for growers, who look for small sized and aerated trees to facilitate fruit harvest
18 and to optimize the penetration of light and pesticide into the crown. In early spring for
19 instance, increased N availability enhanced axis emission in crown outer parts but inhibited it
20 in centre parts (Jordan et al. 2009). The associated variation in resource allocation is usually
21 evaluated according to organ size, while age or position are seldom taken into account
22 (Munoz et al. 1993, Médiène et al. 2002). Detailing the resource gradients within the tree
23 (namely along the woody axes) should confirm the possible link suspected by Cooke et al.
24 (2005) between local resources content and axes development.

25 Experimentally, it is difficult to achieve simultaneous measurements on the major plant

1 processes involved in growth and storage, and particularly (i) the continuous and non-
2 destructive monitoring of N uptake in relation to N supply, (ii) the recording of plant growth
3 dynamics with special emphasis on shoot development, and (iii) the determination of local
4 resource contents and their variability among and along organs. To achieve these goals, it is
5 necessary to maintain constant N availability at the root level because periodic applications of
6 N-fertilizer induce large variations in N concentrations at the root surface, thus altering uptake
7 rates. To our knowledge, the instantaneous N uptake rate has never been measured on trees
8 over a long period of time, nor has this been related to N availability at the root surface.

9
10 This paper investigates how N supply affects the autumnal development and structure of
11 young peach trees (*Prunus persica*) and the C and N resource allocation within the tree
12 structure. To achieve this, trees were grown hydroponically under two regimes of N supply,
13 and instantaneous N uptake rates measured over long time periods. The development of new
14 organs (leaves and axes), and the maintenance of existing organs were assessed to account for
15 the effects of plant N status on shoot growth and leaf senescence (Rosecrance et al. 1998,
16 Niederholzer et al. 2001, Cheng et al. 2002). The autumnal N supply could then be related to:
17 (i) N uptake and plant/organ N status, (ii) the spatial distribution of C and N assimilates, each
18 woody axis being identified and positioned within the structure, and (iii) the trade-off between
19 storage and growth, the latter being analysed on an architectural basis.

20 21 **Materials and methods**

22 23 *Tree preparation*

24 The study was carried out at the INRA research centre in Avignon (southern France). Eighty
25 1-year-old peach rootstocks, i.e. obtained from seeds (cv "GF 305") germinated in January
26 2005, were planted outdoors in a hydroponic system (described below) on May 2, 2006. Each
27 tree had a single axis of 0.8 to 1 cm in diameter. This axis was trimmed down to 25 cm in

1 length. The main root was cut at about 15 cm and was sparsely ramified. During the
2 preconditioning period (May 2 – Oct. 2) three severe prunings homogenized the plant
3 architecture and size, thereby removing on average 151.5 g dry weight (SE or standard error:
4 6.5) and 6.15 g N (SE: 0.29) per tree. The first pruning occurred on June 13, leaving on the
5 main axis only 2 newly-grown secondary axes, which were trimmed down to 15 cm. This
6 forced the axillary buds to develop into tertiary axes. On July 12, four tertiary axes (2 per
7 secondary axis) were selected and their apices removed, once again causing new buds to
8 develop into axes of order 4. The third pruning was performed on August 29. On each tertiary
9 axis, two axes of order 4 were selected and cut to a length of 30 cm. On each of them, only 5
10 buds (i.e. 40 per tree) were allowed to develop freely into axes of order 5. Their elongation
11 and ramification were not completed at the end of the preconditioning period, as was the case
12 for the older axes (order ≤ 4). On October 2, 48 trees were selected for their homogeneity and
13 maintained on the hydroponic system.

14 *Hydroponic set-up*

15
16 The hydroponic experiment comprised 40 PVC troughs (1.5 x 0.25 x 0.15 m) set outdoors in
17 8 rows of 5 units at interspaces of 2 m. The troughs were insulated with expanded polystyrene
18 foam and wrapped in a white plastic sheet to prevent overheating and N pollution from rain
19 and dust. The nutrient solutions were pumped from 4 tanks located in an underground
20 laboratory, and injected at a constant rate of 2 L min⁻¹ into each trough, from which they
21 drained back by gravity to their tank through PVC tubing. The recycled solution was
22 thoroughly aerated by means of successive cascades. Each tank fed 10 troughs, i.e. 2 rows.

23 The temperatures, volumes, pH and nitrate concentrations of the nutrient solutions were
24 controlled automatically and maintained at around the preset values. Analyses and corrections
25 were performed on an hourly basis most of the time. Temperatures were maintained at 23°C
26 ($\pm 0.5^\circ\text{C}$) until Nov 1, then decreased gradually to 14°C, imitating the soil temperature at

1 depth of 50 cm measured at the INRA weather station. Volumes were maintained at 500 L
 2 tank⁻¹ by the addition of deionised water using optical level detectors (LLE 102000
 3 Honeywell, USA). Additions of sulphuric acid maintained the pH at 5.0. The nitrate
 4 concentration was measured (method described by Vercambre and Adamowicz, 1996) by
 5 automatic in-line UV absorption spectrometry (double-beam UVmc2, SAFAS Monaco).
 6 Nitrate depletion was compensated for by automatic injection (precision syringe drive PSD2,
 7 Hamilton Company, Reno, Nevada) of a stock solution containing (eq L⁻¹) 0.41 KNO₃, 0.41
 8 Ca(NO₃)₂ and 0.18 Mg(NO₃)₂, which thus also ensured major cation repletion.

9 Periodic manual analyses were performed to verify the major cation concentrations
 10 (emission spectrometry) and to restore phosphate concentration (vanado-molybdate
 11 colorimetry) by the addition of a phosphate buffer (pH 5.0). The absence of leaks and
 12 denitrification were verified once the trees had been removed after the final sampling. The
 13 volume and NO₃⁻ concentrations of the nutrient solution remained constant for several days
 14 without any addition of nitrate, which confirmed the absence of leaks or of any significant
 15 bacterial consumption of NO₃⁻.

16 17 *N uptake rate*

18 The NO₃ uptake rate (U g day⁻¹ tree⁻¹) was calculated daily after C_d, V_d, n and I_t, being the
 19 respective solution [NO₃] (μmol L⁻¹), volume (L tank⁻¹), number of trees tank⁻¹ on day d at
 20 midnight, and the volume of NO₃ (μmol tank⁻¹) injected to maintain the set concentration at
 21 time t:

$$22 \quad U = \frac{V_d \times C_d - V_{d+1} \times C_{d+1} + \sum_{t=d}^{t=d+1} I_t}{n} \times 14 \times 10^{-6} \quad (\text{eq. 1})$$

23 The volumes V_d and V_{d+1} were calculated as the difference between their set value (500 L per
 24 tank) and the water added to restore the tank level.

25 26 *Nutrition and treatments*

1 During the preconditioning period (May 2-Oct. 2), the trees fed on a nutrient solution
2 containing (meq L⁻¹) 1 NO₃, 1 H₂PO₄, 11 SO₄, 3 K, 7 Ca and 3 Mg. Micronutrients were
3 added (0.1 mL L⁻¹ Kanieltra 6-Fe, Hydroazote, France) and completed by 16.5 mg L⁻¹ EDTA-
4 Fe. The four solution tanks were replicates.

5 On October 2, the 48 trees were divided in two groups. Two tanks holding the control
6 plants were maintained on the normal nutrient solution, and two tanks were N-limited until
7 December 2. In these tanks, the regulation of [NO₃] was halted from October 2 to 5, and the
8 nitrate concentration fell from 1.00 to 0.05 meq L⁻¹. Thereafter, the NO₃ concentration was
9 adjusted periodically in order to maintain $U_{N\text{-limited}}/U_{\text{control}}$ at around 0.25.

10 *In situ measurements*

11
12 Growth was measured once a week throughout the treatment period on an architectural basis
13 (Pagès et al. 1993), each axis being considered as a collection of phytomers or structural units.
14 From this viewpoint, a phytomer comprises an internode and its upper node with the attached
15 leaf and its axillary bud. Measurements were focused on the axes of order 5 and 6. Those of
16 order 5, referred to as parent axes, had not reached their final length on October 2. Five of
17 them, growing on the same axis of order 4, were selected in 18 trees and their constitutive
18 phytomers ranked from base to top. All axes of order 6, referred to as rosettes and long
19 daughter axes, emerged during the treatment period. The position of each developed axillary
20 bud was defined by the rank of its father phytomer (i.e. the phytomer on which it was
21 inserted). Transformation of the rosette into an elongated daughter axis was dated. The
22 number of expanded leaves was also counted on each parent axis, rosette and long daughter
23 axis.

24 The CO₂ exchange rate (CER) of individual leaves was determined at five dates (Oct.
25 12, 19, Nov. 9, 20, Dec. 1) on 6 trees per treatment. We measured CER_{max} (in μmol CO₂ mol
26 m² s⁻¹), on 3 leaves per tree on sunny days around noon, to ensure light saturating conditions

1 (mean PPFD: 1211 $\mu\text{mol m}^2 \text{s}^{-1}$, SE: 17). The measurements were performed using a portable
2 ADC LCA4 photosynthesis system (Hertz, UK), under ambient temperature, light and CO_2 .

3 Leaf fall was monitored on four trees per treatment enclosed with a 1.50 m high plastic
4 net. Fallen leaves were collected every evening from November 2 onwards (i.e. from fall
5 start), frozen before oven drying at 80°C for 92 hours and then weighted. Twice a week, a
6 second sampling was performed in the morning for total N analyses. The leaves remaining on
7 the trees were removed by hand on December 8, oven dried (80°C, 92 hours) and weighted.
8 Leaf fall could then be computed as a % of total leaf DW.

9 10 *Tree samplings*

11 Tree N status and architecture were determined on four individuals per treatment, harvested at
12 the beginning (Oct. 2) and at the end (Dec. 7) of the treatment period. Before sampling,
13 lengths and diameters were measured on each older axis (order <4) and their volume
14 calculated. At sampling, growth measurements focused on the five parent axes, annotated in
15 situ. Their respective diameters were measured every 5 cm from base to top. Each phytomer
16 was also characterized by its internode length. If present, the long daughter axis was described
17 by its length, the number of its expanded leaves and its diameter at the insertion point.

18 The five parent axes were sub-sampled for biochemical analyses, defoliated and cut
19 from base to top into 10 cm long pieces. Each segment had a different growth status: ceased
20 vs. active elongation at the date of October 2 and distal parts developed afterwards. Their long
21 daughter axes were collected separately. Supplementary tree sampling included an aliquot of
22 roots (i.e. one main root and all its branches) washed with deionised water, and a synthetic
23 sub-sample of older axes. The latter combined small pieces of the axes to make up a volume
24 of c.a. 10 cm^3 , set in proportion to the respective contribution of each order (1 to 3) to the total
25 volume of the woody structure. The axes of order 4 were collected separately. The samples
26 were taken immediately after tree harvest, frozen in liquid nitrogen, and kept at -20°C before

1 freeze-drying.

2 Leaf area was measured using an area meter (LI 3100, Li-Cor, Lincoln, Nebraska, USA)
3 on the leaves of three parent axes. This sample was then oven dried (80°C) and weighted to
4 determine the specific leaf weight (SLW, g m⁻²). The rest of the tree was separated into: (i)
5 remaining leaves, (ii) rosettes, parent and long daughter axes, (iii) elder axes, and (iv) roots.
6 All samples were oven dried (at 80°C) before being weighted (DW, g). The total leaf area of a
7 tree was calculated from DW and SLW.

8
9 *Plant analysis*

10 All the samples selected for biochemical analysis were ground in ball mills (MM301 and
11 PM400/2, Retsch, Germany) cooled with liquid N₂. The total N concentration was measured
12 on an elemental analyzer (Flash EA 1112, Thermo Finnigan Milan, Italy). Soluble sugars and
13 starch were determined as described by Gomez et al. (2007) and then added together to
14 compute the total non-structural carbon (TNC) pool. Tree N and TNC contents (g organ⁻¹)
15 were calculated from organ DW, N and TNC concentrations (% DW).

16
17 *Data analysis*

18 When it was necessary to homogenize variances, the data were log or sinh transformed before
19 computation with S-Plus software (Venables and Ripley, 1999). The axes of order 4 and those
20 of orders 1 to 3 were grouped by calculation in a single pool of older axes (orders 1 to 4).
21 Treatment effects on phytomer development (i.e. emission of leaves, rosettes and long
22 daughter axes), leaf fall and subsequent N loss were evaluated by comparing the means of the
23 two populations at each date (Student tests). Treatment effects on tree architecture were
24 evaluated at the December sampling by comparing the number of organs (Student tests) and
25 the positions at which the rosettes and long daughter axes appeared during treatment (chi-
26 square: χ^2 tests). The segments of parent axes, where phytomer elongation was not completed

1 in October, were identified by comparing the number of phytomers longer than 2 cm at both
2 samplings (Student tests). Axis development was considered to be independent of the tree
3 since no difference was evidenced between the means and variances calculated for each tree
4 receiving the same treatment. Time or treatment effects on organ DW, C and N concentrations
5 and contents were assessed using pairwise Student tests. For C, the analyses were run
6 separately for starch, soluble sugars, and TNC. For parent axes, we used a general linear
7 model (GLM) with two main effects: position of the stem segment (separating the 0-10, 10-
8 20, 20-30 cm, and upper segments) and tree category: (i) October tree sampling, (ii) control
9 and (iii) N-limited trees of the December sampling. The effect of treatment was then detailed
10 for each stem position.

11 **Results**

12 *N uptake*

13
14
15 To maintain the N uptake rates of N-limited trees to one fourth of those of control trees, the
16 NO₃ concentration of the nutrient solution was adjusted periodically to between 0.010 and
17 0.025 mmol NO₃ L⁻¹ (Fig. 1). Such adjustments were compulsory because the daily NO₃
18 uptake rate depended on ambient climatic conditions (not shown). The resulting cumulative N
19 uptake per tree over the treatment period (Fig. 2) calculated for each tank revealed no
20 difference between replicates, and also that N uptake was sustained over the whole period.
21 The validity of these autumn uptake measurements was assessed by the match between the N
22 uptake measured during the whole period (10.85 and 2.75 g N tree⁻¹ for control and N-limited
23 trees, resp.) and the N intake calculated from analytical measurements performed on trees
24 sampled at the beginning and end of the treatment period (11.2 and 2.6 g N tree⁻¹ for control
25 and N-limited trees, resp.). As expected, the autumn N uptake of N-limited trees was reduced
26 by 76%. Their mean tree N content was also 59% lower than that of the controls.

1
2 *Growth*

3 Over the treatment period, tree DW rose from 122.6 g (SE: 5.2) to 512.7 g (SE: 32.2) and
4 475.8 g (SE: 34.8) in the control and N-limited trees, resp. Root DW increased by a factor of
5 6.3 and that of the older axes by a factor of 2.5, whatever the treatment. The autumn N supply
6 only affected the leaves and stems of parent and long daughter axes that had not achieved
7 their elongation at experiment start (Fig. 3a). These axes multiplied their stem DW 9.8-fold
8 and 7.2-fold in control and N-limited trees, resp.

9 The differences were not related to the elongation of parent axes which increased their
10 mean number of leaves from 18 to 28 (Fig. 4a), independently of the treatment. The leaves
11 emerged on the youngest phytomers, located on the 30 cm-apex portion. Internode
12 lengthening continued in the 20-30 cm portion, with the number of phytomers longer than 2
13 cm increasing significantly from 0.95 (SE 0.31) to 1.56 (SE 0.23) between Oct. 4 and Dec. 7.
14 At Dec. 7, all internodes, whatever their rank, had the same length and diameter and each
15 portion of the parent axes comprised the same number of phytomers (Fig. 3b).

16 The treatment basically affected the development of axillary buds along the parent
17 axes (Fig. 4b). Indeed, axillary buds could open out and then stop developing at the rosette
18 stage, or transform into a long daughter axis. Both the position and the final outcome of
19 developing buds were affected. Limiting the N supply did not affect the mean number of
20 rosettes per parent axis (5.7) but reduced the number of long daughter axes by 45% (1.1 vs.
21 2.1). The differences appeared on October 9 and increased over time. The growth of these
22 long daughter axes varied also with the treatment. Limiting the N supply increased their
23 diameter (Table 1), reduced leaf emergence (Fig. 4a), but had no effect on their final length.
24 In N-limited trees, all long daughter axes and 48% of rosettes, developed on the 20-30 cm
25 portion of the parent axes. They were more evenly distributed in the control trees (Table 2).

26 Leaf growth reflected the differences in axes growth. During the treatment period, leaf

1 biomass increased less in N-limited trees than in control trees (26.3 vs. 65.5 g). N-limited
2 trees had fewer leaves (1909 vs. 2408), and leaves of smaller size (5.48 vs. 6.47 cm²) and
3 SLW (5.68 vs. 6.34 mg cm⁻²) than controls. Leaf fall remained minor, and at the end of the
4 treatment, the control and N-limited trees had only lost 26% and 35% of their leaf biomass
5 resp. (Table 3). Thus the N-limited and control trees still had 10464 vs. 15568 cm² of attached
6 leaves, resp., on December 7.

7 8 *TNC and N allocation within the tree*

9 At the tree level, there was no significant difference in TNC content at final sampling in
10 control and N-limited trees (79 vs. 86 g). Seventy-three percent of the TNC accumulated
11 during the treatment period.

12 In control trees, the root N concentration (Fig. 5a) remained constant over time. It
13 decreased nonetheless by 12% in the leaves but increased by 28% in the older axes. More
14 than 90% of the autumn N uptake was allocated to three compartments (Fig. 5b): the roots
15 (41%), leaves (28%) and elongating (parent and long daughter) axes (22%). In N-limited
16 trees, the N concentration decreased by almost half in all organs, except in older axes where
17 the decrease was limited to 25%. The autumn N uptake was allocated only to roots (62%) and
18 older axes (17%) with elongating axes and leaves being excluded from this distribution.

19 TNC concentrations increased over time in all organs, except in the leaves (Fig. 5c). In
20 all axes, the TNC concentrations varied with treatment, being enhanced by N limitation. The
21 low N treatment decreased the proportion of TNC in the leaves and elongating axes (18% vs.
22 31%), and increased it in the older axes and roots (82% vs. 69%). Therefore the higher TNC
23 concentration in the elongating axes of N-limited trees could be attributed solely to their
24 lesser growth when compared to control trees (Fig. 5d).

25 The contribution of starch to the TNC pool evolved with time and treatment, from
26 28% on October 4 to 56% and 73% on December 7 in control and N-limited trees, resp. The

1 concentration of soluble sugars (Fig. 7c) remained stable over time in the leaves and
2 elongating axes but increased in roots and older axes of control trees by 48% and 52%, resp.
3 The accumulation of soluble sugars (Fig. 7d) mimicked that of dry biomass, and the C
4 accumulated in excess was mostly stored as starch. Variations in the starch contents (Fig. 7b)
5 and concentrations (Fig. 7a) with time and treatment resembled those observed for TNC (Fig.
6 5c-d), with two exceptions: (i) starch never accumulated in the leaves, and (ii) the roots of N-
7 limited trees contained 42% more starch than those of control trees.

8 A clear concentration gradient was also observed along the parent axes for total N (p
9 <0.0001 under GLM procedures; Fig. 6a), soluble sugars ($p <0.0001$; Fig. 6b) but not for
10 starch ($p = 0.59$; Fig 6c). Total N concentrations increased from base to top by a factor of 1.8,
11 independently of sampling date and treatment. The soluble sugar concentration gradient
12 varied with both factors ($p \leq 0.0044$). It was highest on October 2, with concentrations
13 between the axis base and top varying by a factor of 3. On December 5, this gradient was
14 reduced to a factor of 1.3 and 1.6 in control and N-limited trees, resp. Starch concentrations
15 remained constant along the parent axes but increased over time and with N limitation.

16
17 *Leaf senescence and its effects on individual leaf photosynthesis.*

18 The N concentration in fallen leaves was higher in control than in N-limited trees. Prior to
19 falling, the N was partly removed from the leaves, with about one-third of their N content
20 being transferred to the woody axes and roots. Thus, on December 7, the N concentrations in
21 attached and fallen leaves differed by at least 35%. The fallen leaf N concentration fell over
22 time from 4.56% to 2.96% DW in controls and from 2.67% to 1.79% DW in N-limited trees.

23 The maximum leaf CO_2 exchange rate (Table 3) varied markedly from 15 (Nov. 21) to
24 20 (Oct. 14) $\mu\text{mol m}^{-2} \text{s}^{-1}$, but was not significantly related to N nutrition or leaf aging.

25
26 **Discussion**

1
2 *Methodology*
3 The effects of modifying the N supply on global tree functioning, and the spatialization of
4 these effects within the tree structure, were evaluated using a robust experimental design. We
5 were thus able to couple on the same trees both long term in situ measurements of N uptake
6 and shoot development, and determinations of organ composition in N and TNC. The
7 variability between trees was also reduced during the preconditioning period, (i) by bathing
8 the roots in a highly homogeneous and controlled solution, in terms of its temperature and
9 mineral composition, and (ii) by shaping the shoots with successive prunings. As a result, the
10 coefficients of variation for organ DW, N and TNC concentrations were only 13%, 8%, and
11 9%, resp. Furthermore, the sampled trees were representative because their N uptake closely
12 matched that of the whole tree population.

13
14 *Uptake*
15 The control of N nutrition restricted the daily N uptake rate of N-limited trees to 24% of that
16 of control trees. N uptake, calculated as the sum of the daily NO₃ uptake rate, remained high
17 during the treatment period, representing 53% and 22% of the total N absorbed since May 1st
18 (tree installation in the experimental set-up) by the control and N-limited trees, resp. This was
19 consistent with the data obtained by Niederholzer et al. (2001) and Cheng et al. (2002) who
20 reported that apple trees absorb between 25% and 45% of their total N content during the two
21 months that precede leaf fall. The discrepancy with our control peach trees could be attributed
22 to the exceptionally mild temperatures of autumn 2006 (mean daily air temperature: 14.1°C).

23 Carbon acquisition was primarily controlled by leaf area not CER_{max}, which confirms
24 the results obtained by Kubiske et al. (1998) and Cooke et al. (2005). Indeed, CER_{max} did not
25 decline with time and treatment, despite a clear difference in specific leaf weight (SLW, 6.34
26 vs. 5.68 mg cm⁻² on December 7). Fifty percent (i.e. 0.35 mg cm⁻²) of that difference was

1 accounted for by changes to the N and TNC concentrations in N-limited leaves. The
2 remainder was probably linked to changes in leaf anatomy, namely lamina thickness and
3 density, as suspected by Aranda et al. (2004). Nonetheless, the mean tree TNC contents were
4 not affected by the treatment. The difference in C acquisition likely balanced the C costs of N
5 uptake and allocation.

6 7 *Trade-off between overall growth and storage*

8 Limiting the autumn N supply modified the trade-off between growth and storage. The
9 acquisition of N and C resources was more affected than overall growth. As observed in
10 poplar (Cooke et al. 2005, Sanz Perez et al. 2007), N-limited trees decreased their shoot
11 development but not root growth, forcing the shoot to root ratio to decline. On December 7,
12 this ratio attained 1.8 and 1.2 in the control and N-limited trees, resp. Such low values
13 appeared to be typical of hydroponic conditions (Médiène et al. 2002), favouring the
14 development of fine, absorbing rootlets directly inserted on the taproots.

15 Nitrogen storage was almost not affected in control trees, where the autumn N uptake
16 was proportional to dry biomass accumulation, and organ N concentrations remained almost
17 constant with time. By contrast, the N concentration decreased markedly in all organs of N-
18 limited trees. Such a decrease has had only previously observed in late autumn in a few cases
19 (Millard and Proe 1993). Indeed, N concentrations usually increase in late autumn since
20 growth declines more than N uptake (Munoz et al. 1993). This was not the case in our study,
21 likely because the N concentrations in the N-limited trees were higher than those usually
22 found in the literature: Gomez and Faurobert (2002) measured less than 0.51% N in the DW
23 of axes (vs. 0.75% here), while Niederholzer et al. (2001) found 2.0% N in the DW of leaves
24 (vs. 2.6% here).

25 Organ TNC concentrations also increased in late autumn, whatever the treatment.
26 However, this increase was more marked in N-limited trees than in the controls. The principal

1 changes affected starch, indicating that autumn TNC storage was favoured by low N
2 conditions. By contrast, soluble sugar concentrations were not affected by time or N supply.
3 The relationship between autumn N uptake and TNC accumulation is still debated in the
4 literature and contrasting results have been published, sometimes relative to the same species
5 (Bollmark et al. 1999, Von Fircks et al. 1998, Cheng et al. 2004).

6 7 *C and N allocation*

8 Reducing the N supply modified resource allocation patterns, increasing the proportions of N
9 and TNC allocated to the roots and older axes. To our knowledge, TNC allocation patterns
10 have generally been related more to ablation practices such as pruning (Haddad et al. 1995)
11 than to fertilisation. According to Cheng et al. (2002), N-limited trees increased the
12 proportion of N incorporated in their lower parts even when urea was sprayed on the leaves to
13 replace soil fertilisation, suggesting that this is a generic plant response to low N status and
14 not the result of a first-come first-served principle.

15 The amounts of N exported from the leaves prior to fall were small: 0.30 and 1.27 g N
16 in for the N-limited and control trees, resp. Indeed, (i) the autumn leaf fall rate was low, and
17 (ii) whatever the treatment, only 35% of leaf N was reincorporated into perennial parts. This
18 was likely a consequence of the high N status of the trees after the preconditioning treatment.
19 This proportion could increase to 60% in low N status apple trees (Cheng et al. 2002).

20 21 *Shoot development*

22 Limiting the autumn N supply affected shoot growth, essentially in terms of axillary bud
23 development, i.e. the number, length and position of long daughter axes emitted during the
24 treatment period. Thus no difference was found in the parent axes, despite the importance of
25 their development during the treatment period, when their stem lengths increased by a factor
26 of 1.6. At the scale of the parent axis, the treatment did not affect the proportion of developing

1 axillary buds, but changed their behaviour according to the position of their father phytomer
2 on this parent axis. Under low N conditions, bud break was inhibited on phytomers that had
3 already achieved their elongation at experiment start (located on the basal position of the
4 parent axis, i.e. on the 0-20 cm segment). Conversely, it was promoted on phytomers that
5 were growing during the treatment period (located on the median position of the parent axis,
6 i.e. on the 20-30 cm segment). No difference was found regarding the phytomers emitted
7 during the treatment period (located on the apical position of the parent axis, i.e. above 30
8 cm). Furthermore, bud development into short (rosette) or long daughter axes was altered.
9 Thus the number of long daughter axes was halved, but no effect was seen on the total
10 number of rosettes. As a consequence, the leaf number was reduced by 12%. Leaf fall was
11 also reduced (3580 vs. 7750 cm² on December 7) and this partly compensated for the smaller
12 leaf expansion of N-limited trees. As a result, leaf area was reduced by one third for N-limited
13 trees, on December 7. Several other studies had already confirmed that axis emission is the
14 main factor affected by N supply: in the spring, trees adapt their growth to the amount of
15 cycling N, altering the number of growing axes rather than individual axis growth (Jordan et
16 al. 2009). In the summer, both the number and length of axes vary with N supply (Lobit et al.
17 2001, Cooke et al. 2005). The intensity of the response depends on the branching ability of
18 the clone, and eventually becomes non significant (Cline et al. 2006).

19 Different mechanisms have been proposed to explain this adaptation. Firstly, cytokinin,
20 the production of which in the roots is correlated to N supply (Takei et al. 2001, Cline et al.
21 2006), may act as a long distance signal that promotes axillary bud development. Secondly,
22 the quasi-absence of the response of low branching clones could be attributed to their
23 increased sensitivity to auxin, a repressor of bud outgrowth (Cline et al. 2006). And thirdly,
24 shoot N concentration may play a role because ramification is promoted by glutamine and
25 asparagine foliar sprays (Cline et al. 2006). Moreover, Cooke et al. (2005) found that N

1 supply only triggers axis production when the leaf N concentration exceeds 4% DW, which
2 was the case in our control trees. It is tempting, therefore, to relate axillary bud development
3 to the local N concentration. Thus, under low N conditions, the N concentrations decreased
4 almost by half in parent axes as a consequence of biomass accumulation. The decrease was
5 greatest in the 0-20 cm segment, where ramification was inhibited. The N-limited trees were
6 more densely branched than control trees in the median parts of the crown, their lower parts
7 bearing only rosettes.

8 9 *Conclusion*

10 An autumn N limitation affected N uptake more than growth, and therefore markedly
11 modified the trade-off between storage and growth. In control trees, growth remained
12 proportional to N uptake even in late autumn, and organ N concentrations were maintained at
13 a stable level. Reducing the N supply limited N uptake and halved the tree N concentration,
14 but increased starch accumulation. Growth was only affected in terms of axillary bud
15 development (i.e. the number and position of new axes), modifying tree size and shape. Our
16 results demonstrated the high degree of phenotypic tree plasticity relative to N fertilisation. At
17 this stage, it is difficult to conclude whether or not changing the fertilisation practice in
18 autumn brings growers a practical benefit. Limiting autumn N supply clearly reduced the
19 number of short shoots which have to be removed by pruning, but the lower organ N
20 concentrations would probably restrict early spring shoot and fruit growth (Jordan et al.
21 2009). Additional data obtained on the remaining trees during the following spring may help
22 evaluate further these propositions.

23 24 **Acknowledgements**

25 This work was funded by the "PACA 2006-13514 grant: "Relation entre disponibilité en azote de réserve et croissance
26 précoce des pousses feuillées et des fruits chez le pêcher" from the région 'Provence-Alpes-Cote d'Azur. We would like to
27 thank J. Fabre, J. Hostaléry, V. Serra and C. Vigne for setting up and maintaining the hydroponic orchard and helping with
28 architectural measurements, and D. Bancel and E. Rubio for chemical analyses.

29

1 **References**

- 2
- 3 Amponsah IG, Lieffers VJ, Comeau PG, Landhausser SM (2004) Nitrogen-15 uptake by *Pinus contorta*
- 4 seedlings in relation to phenological stage and season. *Scand. J. Forest Res.* 19: 329-338
- 5 Aranda IF, Pardo L, Gil L, Pardos PA (2004) Anatomical basis of the change in leaf mass per area and nitrogen
- 6 investment with relative irradiance within the canopy of eight temperate tree species. *Acta Oecol. Int. J.*
- 7 *Ecol.* 25:187-195
- 8 Bollmark L, Sennerby-Forsse L, Ericsson T (1999) Seasonal dynamics and effects of nitrogen supply rate on
- 9 nitrogen and carbohydrate reserves in cutting-derived *Salix viminalis* plants. *Can. J. For. Res.* 29:85-94
- 10 Boonprakob U, Byrne DH, Mueller DMJ (1996) Anatomical differences of axillary bud development in blind
- 11 nodes and normal nodes in peach. *Hortscience* 31:798-801
- 12 Cheng L, Dong SF, Fuchigami LH (2002) Urea uptake and nitrogen mobilization by apple leaves in relation to
- 13 tree nitrogen status in autumn. *J. Hortic. Sci. Biotechnol.* 77:13-18
- 14 Cheng L, Ma FW, Ranwala D (2004) Nitrogen storage and its interaction with carbohydrates of young apple
- 15 trees in response to nitrogen supply. *Tree Physiol.* 24:91-98
- 16 Cline MG, Thangavelu M, Dong-II K (2006) A possible role of cytokinin in mediating long-distance nitrogen
- 17 signaling in the promotion of sylleptic branching in hybrid poplar. *J. Plant Physiol.* 163:684-688
- 18 Cooke JEK, Martin TA, Davis JM (2005) Short-term physiological and developmental responses to nitrogen
- 19 availability in hybrid poplar. *New Phytol.* 167:41-52
- 20 Haddad Y, Clair-Maczulajty D, Bory G (1995) Effects of curtain like pruning on distribution and seasonal
- 21 patterns of carbohydrate reserves in plant (*Platanus Acerifolia Wild*) trees. *Tree Physiol.* 15: 135-140
- 22 Gloser V, Sedlacek P, Gloser J (2009) Consequences of nitrogen deficiency induced by low external N
- 23 concentration and by patchy N supply in *Picea abies* and *Thuja occidentalis*. *Trees-Struct. Func.* 23: 1-9
- 24 Gomez L, Faurobert M (2002) Contribution of vegetative storage proteins to seasonal nitrogen variations in the
- 25 young shoots of peach trees (*Prunus persica L. Batsch*). *J. Exp. Bot.* 53:2431-2439
- 26 Gomez L, Bancel D, Rubio E, Vercambre G (2007) The microplate reader: an efficient tool for the separate
- 27 enzymatic analysis of sugars in plant tissues - validation of a micro-method. *J. Sci. Food Agric.* 87:1893-
- 28 1905
- 29 Jordan MO, Wendler R, Millard P (2009) The effect of autumn N supply on the architecture on young peach
- 30 (*Prunus persica L.*). *Trees-Struct. Func.* 23:235-245
- 31 Kaelke CM, Dawson JO (2005) The accretion of nonstructural carbohydrates changes seasonally in *Alnus incana*
- 32 *ssp. rugosa* in accord with tissue type, growth, N allocation, and root hypoxia. *Symbiosis* 39: 61-66
- 33 Kubiske ME, Pregitzer KS, Zak DR, Mikan CJ (1998) Growth and C allocation of *Populus tremuloides*
- 34 genotypes in response to atmospheric CO₂ and soil N availability. *New Phytol.* 140:251-260
- 35 Lobit P, Soing P, Génard M, Habib R (2001) Effects of timing of nitrogen fertilization on shoot development
- 36 in shoot development in peach trees. *Tree Physiol.* 20:35-42.
- 37 Médiène S, Jordan MO, Pagès L, Le Bot J, Adamowicz S (2002) The influence of severe shoot pruning on
- 38 growth, carbon and nitrogen status un young peach trees (*Prunus persica*). *Tree Physiol.* 22:1289-1296.
- 39 Millard P, Proe MF (1993) Nitrogen uptake, partitioning and internal cycling in *Picea sitchensis (Bong.) Carr.* as
- 40 influenced by nitrogen supply. *New Phytol.* 125:113-119
- 41 Millard P (1996) Ecophysiology of the internal cycling of nitrogen for tree growth. *Z. Pflanzenernahr. Bodenk.*
- 42 159:1-10.
- 43 Munoz N, Guerri J, Legaz F, Primo-Milo E (1993) Seasonal uptake of ¹⁵N nitrate and distribution of the
- 44 absorbed nitrogen in peach trees. *Plant Soil.* 150: 263-269
- 45 Niederholzer FJA, DeJong TM, Saenz JL, Muraoka TT, Weinbaum SA (2001) Effectiveness of fall versus spring

- 1 soil fertilization of field-grown peach trees. *J. Am. Soc. Hortic. Sci.* 126:644-648
- 2 Pagès L, Génard M, Kervella J (1993) Quantitative analyses of the vegetative development of the shoot system
- 3 of young peach trees. *Agronomie* 13:135-144
- 4 Rosecrance RC, Johnson RS, Weinbaum SA (1998) The effect of timing of post-harvest foliar urea sprays on
- 5 nitrogen absorption and partitioning in peach and nectarine trees. *J. Hortic. Sci. Biotechnol.* 73:856-861
- 6 Sanz Perez V, Castro Diez P, Valladares F (2007) Growth versus storage: responses of Mediterranean oak
- 7 seedlings to changes in nutrient and water availabilities *Ann. For. Sci.* 64: 201-210
- 8 Tagliavini M, Quartieri M, Millard P (1997) Remobilised nitrogen and root uptake of nitrate for spring leaf
- 9 growth, flowers and developing fruits of pear (*Pyrus communis L.*) trees. *Plant Soil* 195: 137-142.
- 10 Takei K, Takahashi T, Sugiyama T, Yamaya T, Sakakibara H (2002) Multiple routes communicating nitrogen
- 11 availability from roots to shoots: a signal transduction pathway mediated by cytokinin. *J. Exp. Bot.*
- 12 53:971-977
- 13 Veberic R, Stampar F, Vodnik D (2002) Autumn photosynthesis of 'Golden Delicious' apple trees - the effects of
- 14 picking and fertilisation treatment. *Gartenbauwissenschaft* 67:92-98
- 15 Venables WN, Ripley BD (1999) *Modern applied statistics with S-Plus*. Springer ISBN-0-387- 98825-4, 501p.
- 16 Vercambre G, Adamowicz S (1996) Measuring nitrate concentration in nutrient solutions in the presence of
- 17 polyethylene glycol through UV spectrometry. *Agronomie* 16:73-87
- 18 Von Fircks Y, Sennerby-Forsse L (1998) Seasonal fluctuations of starch in root and stem tissues of coppiced
- 19 *Salix viminalis* plants grown under two nitrogen regimes. *Tree Physiol.* 18:243-249
- 20
- 21

1
2
3
4
5
6
7
8
9
10
11
12
13
14
15
16
17
18
19
20
21

Table 1 Dimensions of long daughter axes in control and N-limited peach trees. Numbers are means \pm standard errors, the total number of axes being shown into brackets. The number of expanded leaves per axis and the length (cm) of the stem were determined at the last count on all trees (Nov. 16). Axis diameter (mm) was measured on sampled trees (Dec. 7), 0.5 cm above their insertion point. Different letters between treatments indicate that mean values were significantly different (Student tests)

	Control trees	N-limited trees
Expanded leaves (number axis ⁻¹)	8.86 ^a \pm 0.23 (189)	7.93 ^b \pm 0.21 (99)
Stem length (cm)	9.90 ^a \pm 0.44 (189)	7.72 ^a \pm 0.48 (99)
Axis diameter (mm)	2.71 ^a \pm 0.07 (41)	2.23 ^b \pm 0.06 (28)

Table 2 Relative distribution (as a % of the total) of rosettes and long daughter axes along their parent axes in control and N-limited peach trees. The parent phytomers are described by their position along the stem. The treatment exerted a significant effect on long daughter axes, but not on rosettes

	Rosettes		Long daughter axes	
	Control	N-limited trees	Control	N-limited trees
<i>0-10 cm portion</i>	19%	25%	-	-
<i>10-20 cm portion</i>	33%	11%	21%	-
<i>20-30 cm portion</i>	32%	48%	79%	100%
<i>30 cm-apex portion</i>	16%	16%	-	-
Chi square test:	χ^2 : 0.806 (df = 3)		χ^2 : 0.035 (df = 3) ns	

Version postprint
Manuscrit d'auteur / Author manuscript

1
2 **Table 3** Maximum CO₂ exchange rate (CER_{max}, μmol m⁻² s⁻¹) of individual attached leaves and
3 dynamics of leaf fall (as % of total leaf dry biomass). CER_{max} are means ± standard errors of 6
4 measurements performed at around noon under saturating light conditions. Similar letters
5 between treatments indicate that mean values were not significantly different (Student tests).
6 No test was made for the dynamics of leaf fall since the data consisted in a single measurement
7

Date	Maximum CO ₂ exchange rate (μmol m ⁻² s ⁻¹)		Leaf fall (% of total leaf dry biomass)	
	Control trees	N-limited trees	Control trees	N-limited trees
October 13	19.73 ^a ±1.28	19.38 ^a ±0.79	0 %	0 %
October 19	15.51 ^a ±0.53	15.26 ^a ±0.62	0 %	0 %
November 9	16.12 ^a ±0.94	17.61 ^a ±0.26	9.6 %	3.9 %
November 21	15.6 ^a ±0.65	15.18 ^a ±0.40	17.7 %	11.7 %
December 1	18.28 ^a ±0.76	18.54 ^a ±0.78	23.7 %	17.6 %

8
9
10
11
12
13

1 **Figures legends**

2
3 **Fig 1** Nitrate concentration (mol m^{-3}) measured in the nutrient solutions of control (full lines) and N-limited (dotted lines) trees during the culture period (June 2, Dec. 7). The difference between the two replicates of each treatment was too small to be visible. Individual symbols (2564 analyses per solution) were too numerous to be plotted. The Y-axis is in log scale to show small variations in nitrate concentrations in the N-limited treatment

8
9 **Fig 2** Mean cumulative N uptake (g tree^{-1}) calculated from analysis of the nutrient solutions feeding 11 control (full lines) and 11 N-limited (dotted lines) trees during the treatment period (Oct. 2 – Dec. 7). Thick and thin lines correspond to replicate solutions. On Dec. 7, the symbols (closed dots: control trees; open dots: N-limited trees.) represent the total N uptake during this period, as calculated from the analysis of four sampled trees

14
15 **Fig 3** (a) Dry biomass (DW, g organ^{-1}) and (b) number of phytomers along successive sections of the parent axis on October 2 (thick line) and December 7 (dotted lines) of control (closed dots) and N-limited trees (open dots). Each symbol is the mean of four trees (a) or 20 parent axes (5 axes sampled tree^{-1}) (b) plotted with standard errors. The means coded with different letters are significantly different (Student pairwise tests)

20
21 **Fig 4** Dynamic responses of the axis emission and growth of control (closed symbols) or N limited (open symbols) trees: (a) Number of leaves per parent (dots) and long daughter (triangles) axes, (b) Number of long daughter axes (dots) and rosettes (triangles) per parent axis. In (a) & (b), each symbol is the mean plotted with standard errors. The means coded with different letters are significantly different (Student pairwise tests). Measurements were taken on 90 parent axes (5 axes tree^{-1}) per treatment

27
28 **Fig 5** Organ concentration (% in DW) and content (g organ^{-1}) in control (closed dots) and N limited (open dots) trees on October 2 (thick line) and December 7 (dotted lines). (a) Total N concentration, (b) Total N content, (c) TNC concentration and (d) TNC content. Each symbol is the mean of four trees plotted with standard errors. The means coded with different letters are significantly different (Student pairwise tests)

33
34 **Fig 6** Concentration profile of parent axes (% in DW) between October 2 (thick line) and December 7 (dotted lines) in response to control (closed dots) and N-limited autumn supply (open dots). (a) Total N, (b) Soluble sugars and (c) Starch. Each symbol is the mean of 20 parent axes (5 axes tree^{-1}) plotted with standard errors. The means coded with different letters are significantly different (Student pairwise tests)

39
40 **Fig 7** Organ carbohydrate concentrations (% in DW) and contents (g organ^{-1}) for control (closed dots) and N-limited (open dots) trees on October 2 (thick line) and December 7 (dotted lines). (a) Starch concentration, (b) Starch content, (c) Soluble sugar concentration and (d) Soluble sugar content. Each symbol is the mean of 4 trees plotted with standard errors. The means coded with different letters are significantly different (Student pairwise tests)

Figure 1

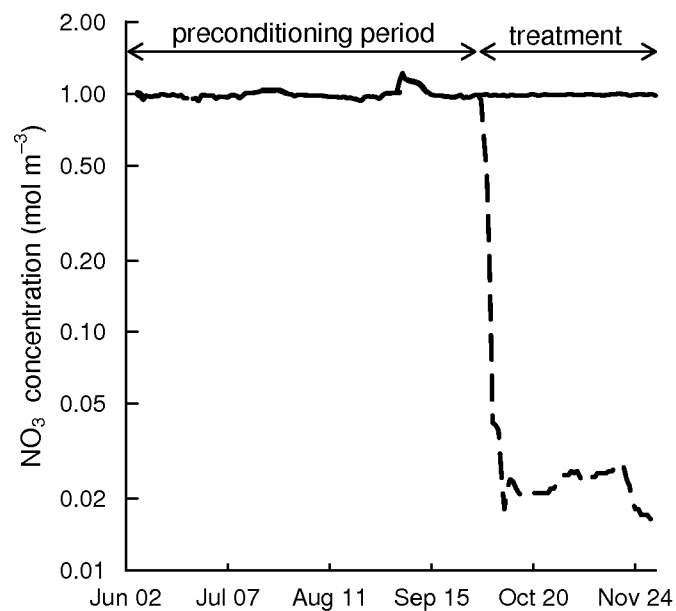


Figure 2

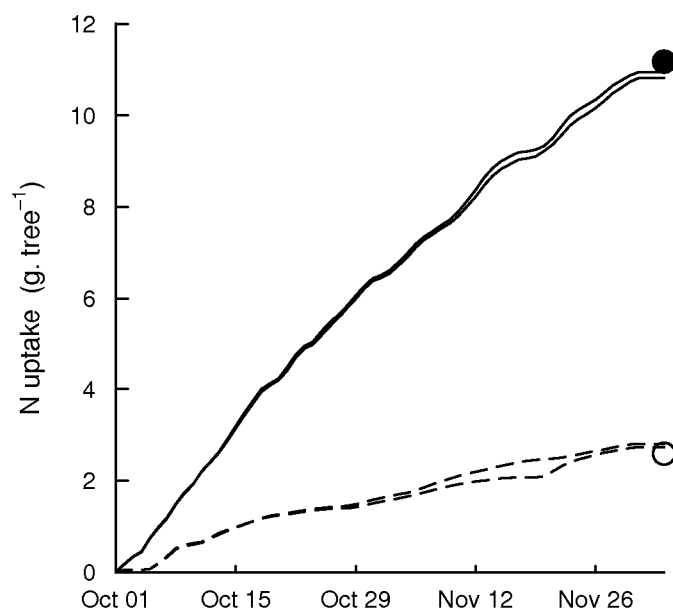


Figure 3

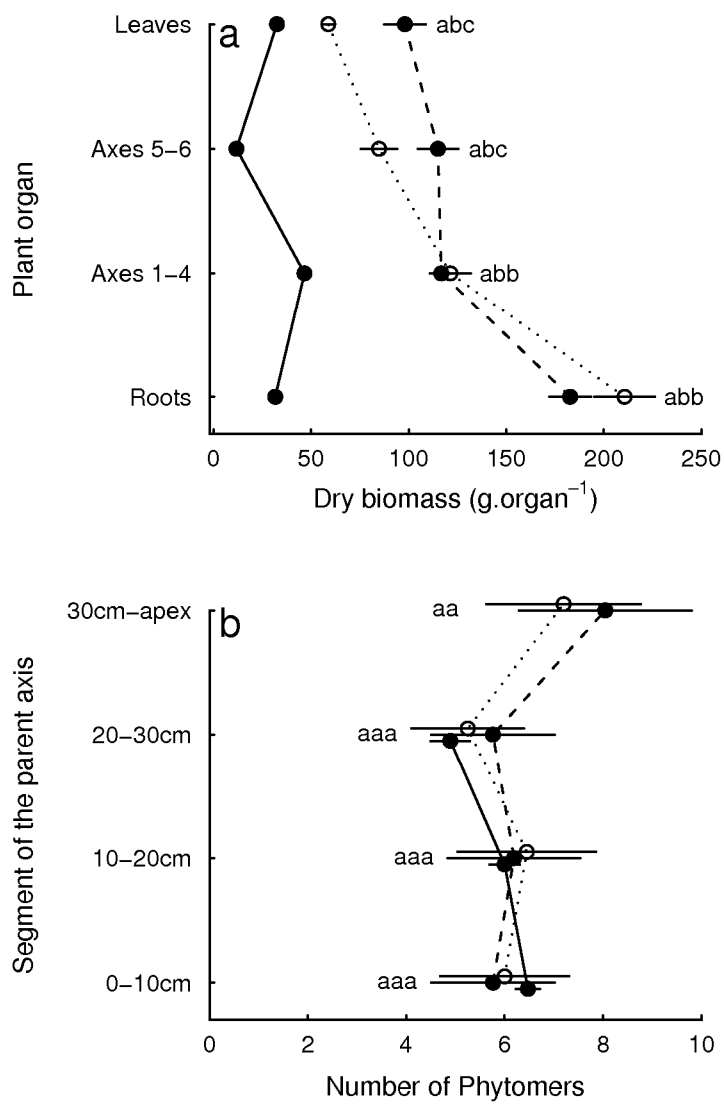
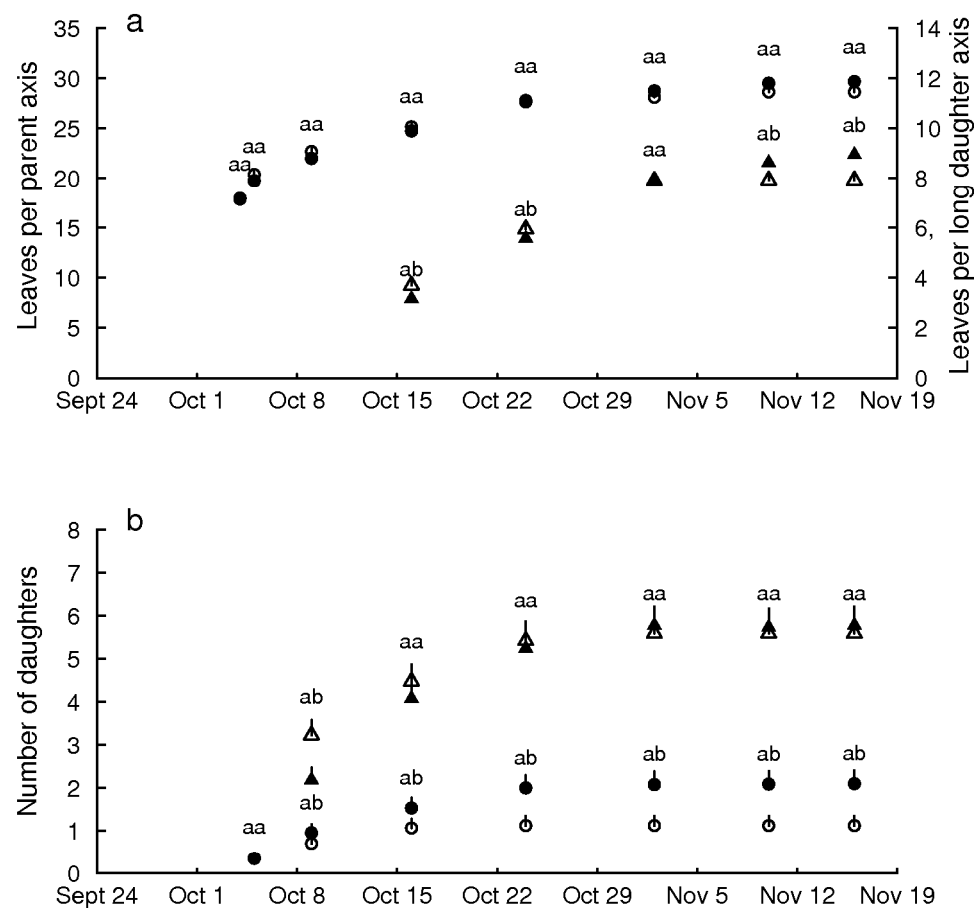
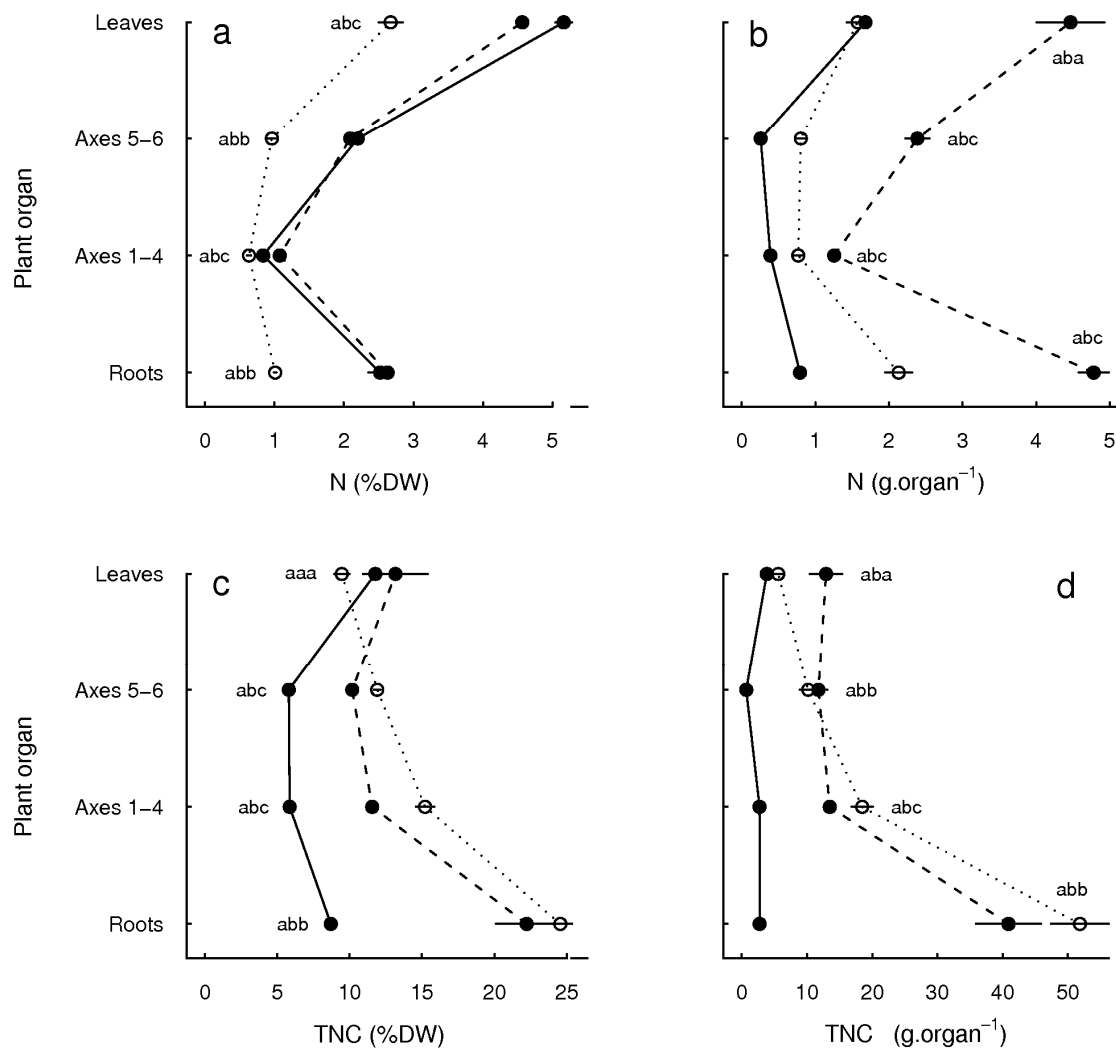


Figure 4



1

Figure 5



2

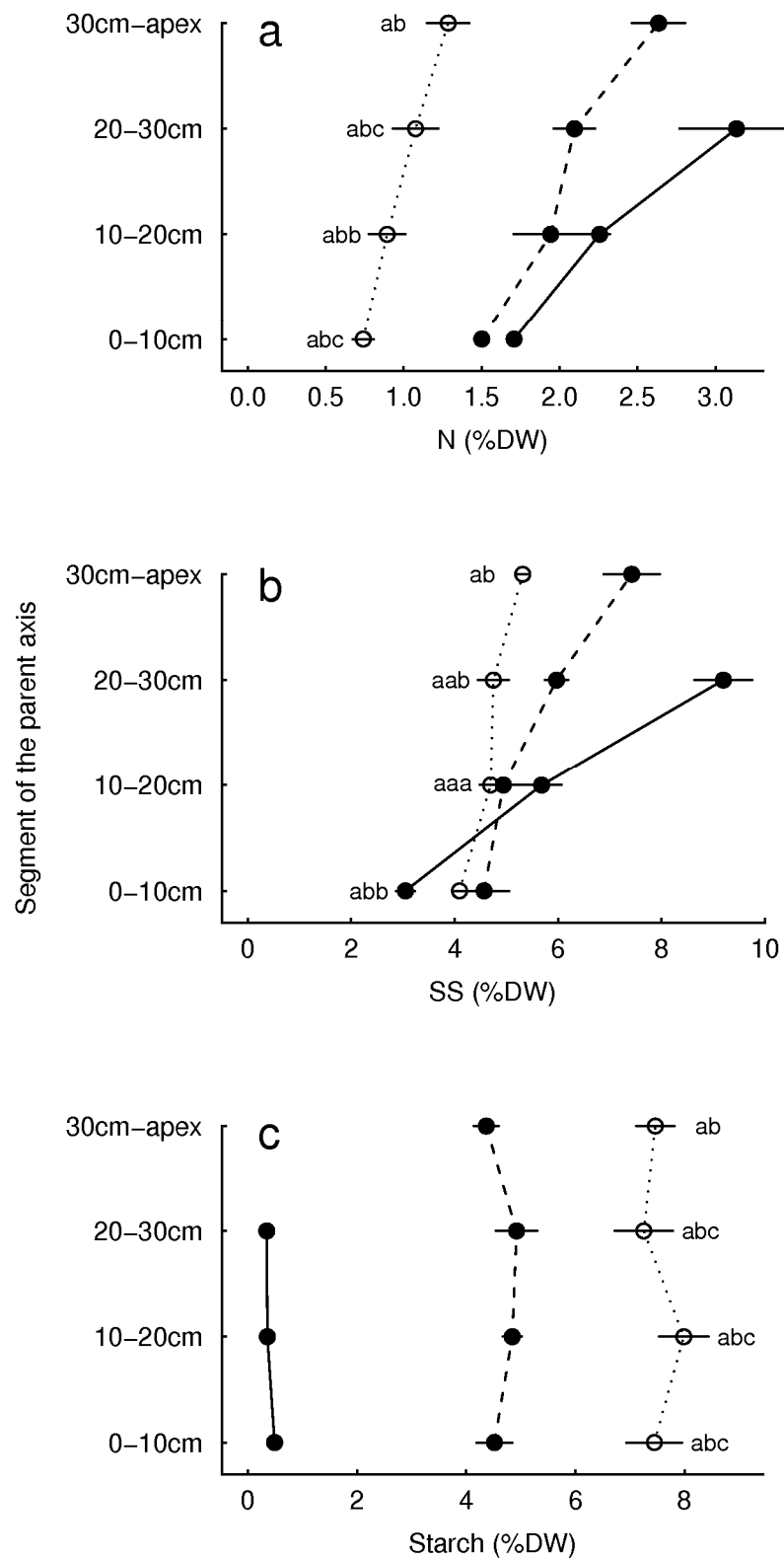
3

4

5

6

Figure 6

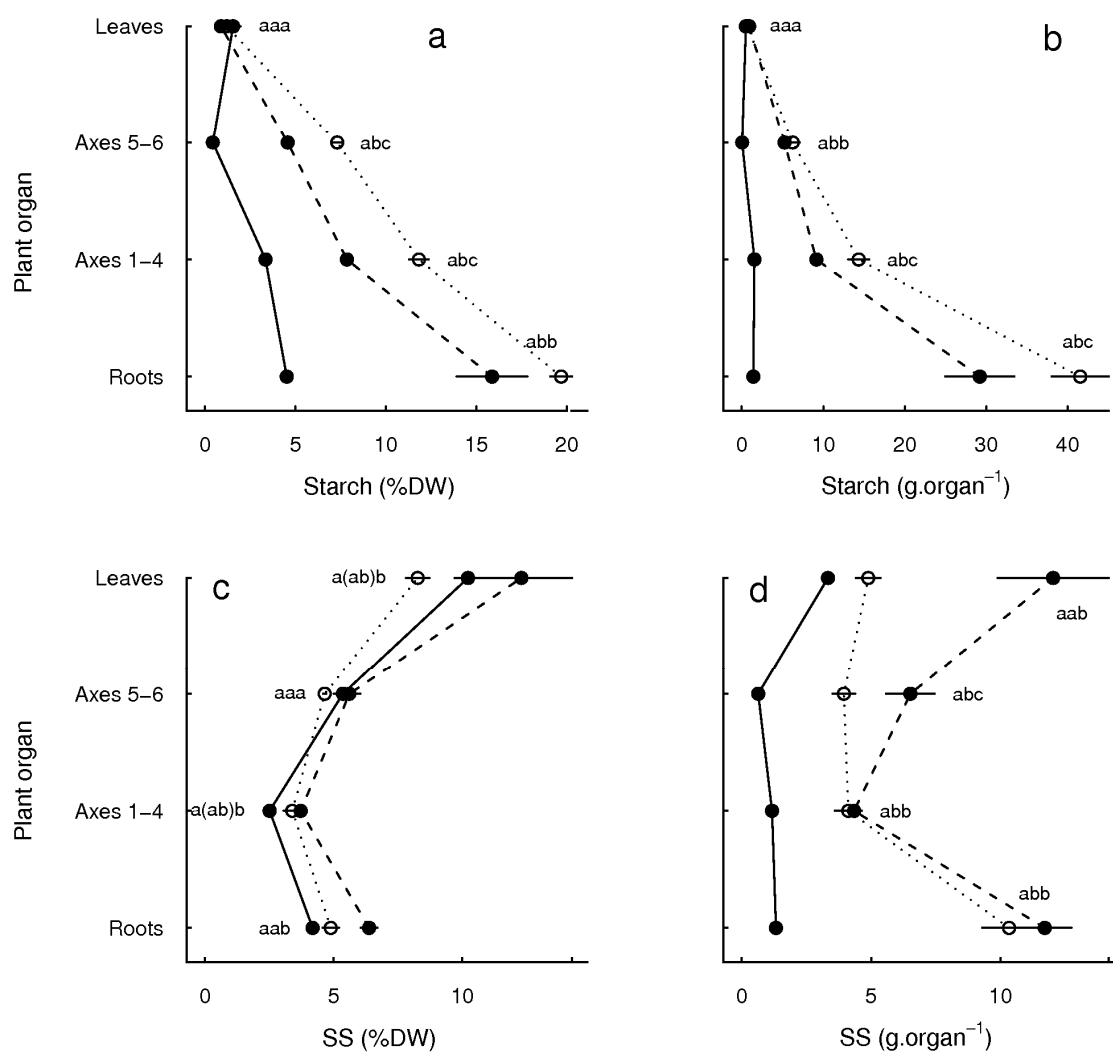


1

2

1
2
3
4

Figure 7



5
6
7