



HAL
open science

Exploratory analysis of genomic segmentations with segtools

Orion J. Buske, Michael M. Hoffman, Nadia Ponts, Karine G. Le Roch, William Stafford Noble

► To cite this version:

Orion J. Buske, Michael M. Hoffman, Nadia Ponts, Karine G. Le Roch, William Stafford Noble. Exploratory analysis of genomic segmentations with segtools. *BMC Bioinformatics*, 2011, 12, 7 p. <10.1186/1471-2105-12-415>. <hal-02652390>

HAL Id: hal-02652390

<https://hal.inrae.fr/hal-02652390v1>

Submitted on 29 May 2020

HAL is a multi-disciplinary open access archive for the deposit and dissemination of scientific research documents, whether they are published or not. The documents may come from teaching and research institutions in France or abroad, or from public or private research centers.

L'archive ouverte pluridisciplinaire **HAL**, est destinée au dépôt et à la diffusion de documents scientifiques de niveau recherche, publiés ou non, émanant des établissements d'enseignement et de recherche français ou étrangers, des laboratoires publics ou privés.



HAL Authorization

SOFTWARE

Open Access

Exploratory analysis of genomic segmentations with Segtools

Orion J Buske¹, Michael M Hoffman¹, Nadia Ponts², Karine G Le Roch² and William Stafford Noble^{1,3*}

Abstract

Background: As genome-wide experiments and annotations become more prevalent, researchers increasingly require tools to help interpret data at this scale. Many functional genomics experiments involve partitioning the genome into labeled segments, such that segments sharing the same label exhibit one or more biochemical or functional traits. For example, a collection of ChIP-seq experiments yields a compendium of peaks, each labeled with one or more associated DNA-binding proteins. Similarly, manually or automatically generated annotations of functional genomic elements, including *cis*-regulatory modules and protein-coding or RNA genes, can also be summarized as genomic segmentations.

Results: We present a software toolkit called *Segtools* that simplifies and automates the exploration of genomic segmentations. The software operates as a series of interacting tools, each of which provides one mode of summarization. These various tools can be pipelined and summarized in a single HTML page. We describe the *Segtools* toolkit and demonstrate its use in interpreting a collection of human histone modification data sets and *Plasmodium falciparum* local chromatin structure data sets.

Conclusions: *Segtools* provides a convenient, powerful means of interpreting a genomic segmentation.

Background

Genomic research often requires classifying regions of the genome according to their biochemical or functional properties and then investigating how these classes relate to one another and to complementary genomic data sets. One might create these classifications automatically, by using machine learning methods that partition the genome into labeled segments [1-4], or manually on the basis of one or more experimental data sets.

In either case, one then faces the challenge of exploring the biological meanings of the segment labels. The UCSC Genome Browser [5] allows researchers to explore some such relationships manually, but such analyses do not efficiently scale to aggregation over a complete genome. The Galaxy platform [6] and BEDTools [7] provide useful large-scale automated analyses, but these methods do not generate the aggregate comparisons and visualizations critical to understanding these genomic segmentations. EpiGRAPH [8] is a more

sophisticated software toolkit that, in conjunction with Galaxy, offers some visualization capabilities in addition to a variety of machine learning analysis methods.

To address this type of analytical challenge, we have developed *Segtools*, a software toolkit that facilitates the exploratory analysis of genomic segmentations. *Segtools* is designed to provide segmentation-centric summary statistics and visualizations, in a manner that is scalable and easy to use. In this context, a *segmentation* is defined as a set of non-overlapping regions of a genome, where each segment is assigned one of a small set of labels. Manually or automatically generated classifications, such as the examples above, are easily represented as segmentations, with a segment for each genomic locus. Labels may correspond to different types of functional elements — intron, exon, promoter — or to different subtypes of a single element — genes with high, medium or low expression. A user can then employ *Segtools* to explore how the labels relate to transcription factor binding sites, peaks of histone modification, or any other annotation. Note that some *Segtools* commands can operate on sets of regions that contain overlapping segments, such as

* Correspondence: william-noble@uw.edu

¹Department of Genome Sciences, University of Washington, PO Box 355065, Seattle, WA 98195-5065, USA

Full list of author information is available at the end of the article

overlapping transcripts. Throughout this manuscript and the Segtools documentation, we refer to this more relaxed form of segmentation as an *annotation*. Segtools generates results in tab-delimited text and image formats, and can summarize them in a single HTML report. Furthermore, Segtools analyses are easy to perform, script, and incorporate into existing analysis pipelines, making them useful for both manual and automated exploration.

Implementation

Segtools is implemented as a collection of Python modules that process input files and output results in tab-delimited data files. These output files are then processed by visualization code written in R to generate plots.

Usage

Segtools provides a set of tools for analyzing segmentations, a subset of which are summarized in Table 1. These tools can be run via a command-line or Python interface to create or compare segmentations and to visualize the properties of a segmentation and its relationships with provided annotations. A typical workflow involves 1) running the `length-distribution`, `nucleotide-frequency`, and `transition` commands on a segmentation to get a high-level view of its structure and the relationships among labels, 2) running `signal-distribution` against a set of signal tracks such as ChIP-seq signal intensities, and `aggregation` and `overlap` against a collection of annotations set such as genes, TSSs, enhancer sites, insulator sites, repetitive regions, CpG islands, or any other (potentially sub-categorized) region sets, and then 3) generating an HTML report to collate these results. Because each

Segtools command performs an independent analysis against a single annotation file, such a workflow is trivial to parallelize.

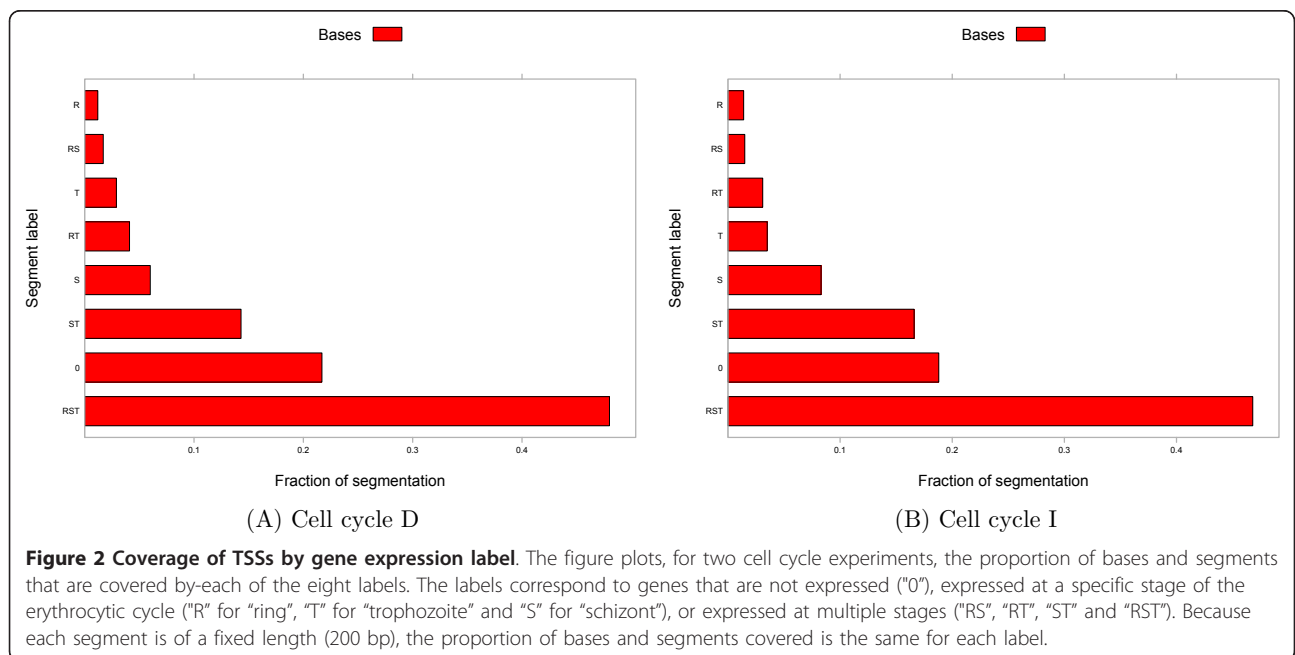
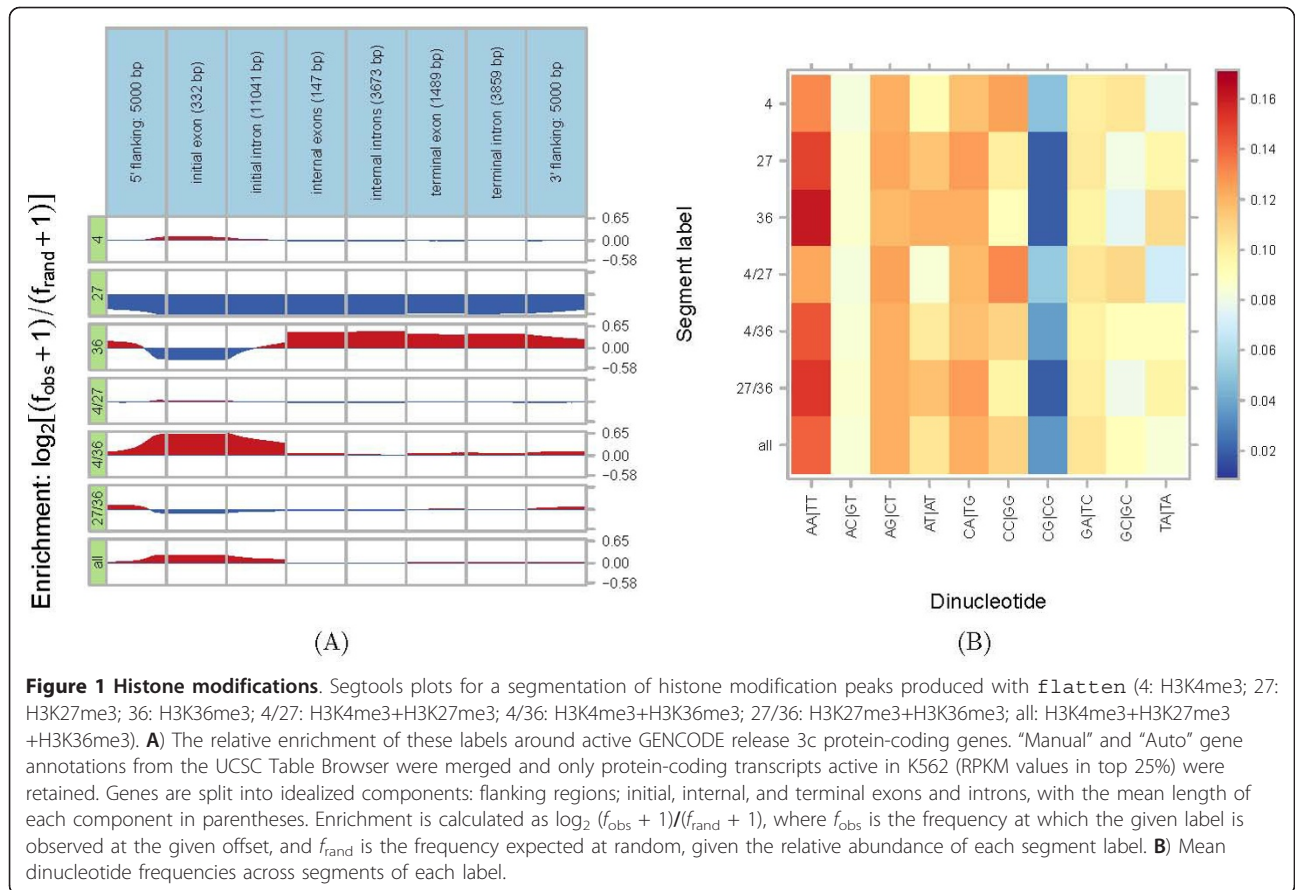
As input, segmentations are accepted in Browser Extensible Data (BED) or General Feature Format (GFF) formats, with the “name” column used as the segment label. Point and region annotations are accepted in BED or GFF formats with the “name” column as an optional grouping variable, gene annotations in Gene Transfer Format (GTF), and signal annotations in Genomedata format [9]. As output, each command produces a tab-delimited text file containing the primary results, and most commands also produce a visualization of the results. A summary of the data outputted by each command is shown in Table 1, and the specific visualizations are as follows:

- The `aggregation` command produces a plot in which the x-axis is either a specific type of point annotation (such as a TSS) or a region (such as an exon), and the vertical axis is the relative enrichment of a given label at each position (see Figure 1A).
- The `length-distribution` command produces two visualizations: (1) a stacked collection of violin plots, each showing the distribution of segment lengths for one label, and (2) a bar plot showing the fraction of the segmentation (both in terms of bases and segments) that is occupied by each label (see Figure 2).
- The `nucleotide-frequency` command produces a heat map in which rows are segment labels, columns are dinucleotides, and values are frequencies of the given dinucleotide in the given label (see Figure 1B).

Table 1 Segtools analysis commands (segtools-...)

Command	Input	Output	Visualization
<code>length-distribution</code>	S	Segment length distribution by label	violin, bar plots (Figure 2)
<code>nucleotide-frequency</code>	S, G	Mono-/dinucleotide frequency by label	heat map (Figure 1B)
<code>signal-distribution</code>	S, G	Signal mean and variance by label	heat map (Figure 3)
<code>transition</code>	S	Transition frequency between labels	heat map, graph diagram
<code>aggregation</code>	S, A	Label density around annotations	line plot (Figure 1A)
<code>compare</code>	S, S	Edit distances among all pairs of labels	heat map
<code>overlap</code>	S, A	Overlap of annotations by segments	PR curve, heat map
<code>preprocess</code>	A	An annotation in binary format	
<code>flatten</code>	S, A	Segmentation with a label for every combination of labels in the input segmentations	
<code>feature-distance</code>	S, A	Distance from each segment to nearest feature	
<code>html-report</code>	S	HTML summary of Segtools command outputs	

The commands offered by the Segtools package and their associated inputs and outputs. The first four commands analyze a single segmentation. The following three commands compare a segmentation to another segmentation or to an annotation. The last four commands generate no visualizations and are utilities to be used in conjunction with the other Segtools commands. In each row of the table, the second column indicates the input file types (“S” for segmentation, “A” for annotation, “G” for genomedata), and the fourth column indicates how the outputs are visualized (and a reference to an example figure in this article if one exists). “PR curve” refers to a precision-recall curve.



- The `overlap` command produces a series of precision-recall plots, one per annotation label. In each plot, every point corresponds to a segmentation label, the x-axis is the percentage of annotation labels that overlap the segmentation label, and the y-axis is the percentage of segmentation labels that overlap the annotation label. The command also produces a heat map in which rows are segment labels, columns are annotation groups, and values represent the fraction of overlap between segments of the given label and annotations of the given group. This overlap fraction is either in terms of segments or bases overlapped.
- The `signal-distribution` command produces a heat map in which rows are data tracks, columns are segment labels, and values represent the mean data value associated with the given label (see Figure 3).
- The `transition` command produces a heat map in which rows and columns are segment labels, and values represent the frequency with which the row label occurs immediately following the column label. The command also produces a graph visualization of the same data, in which nodes are labels, and edges represent transition frequencies. The command provides options to include only edges corresponding to high-frequency transitions.

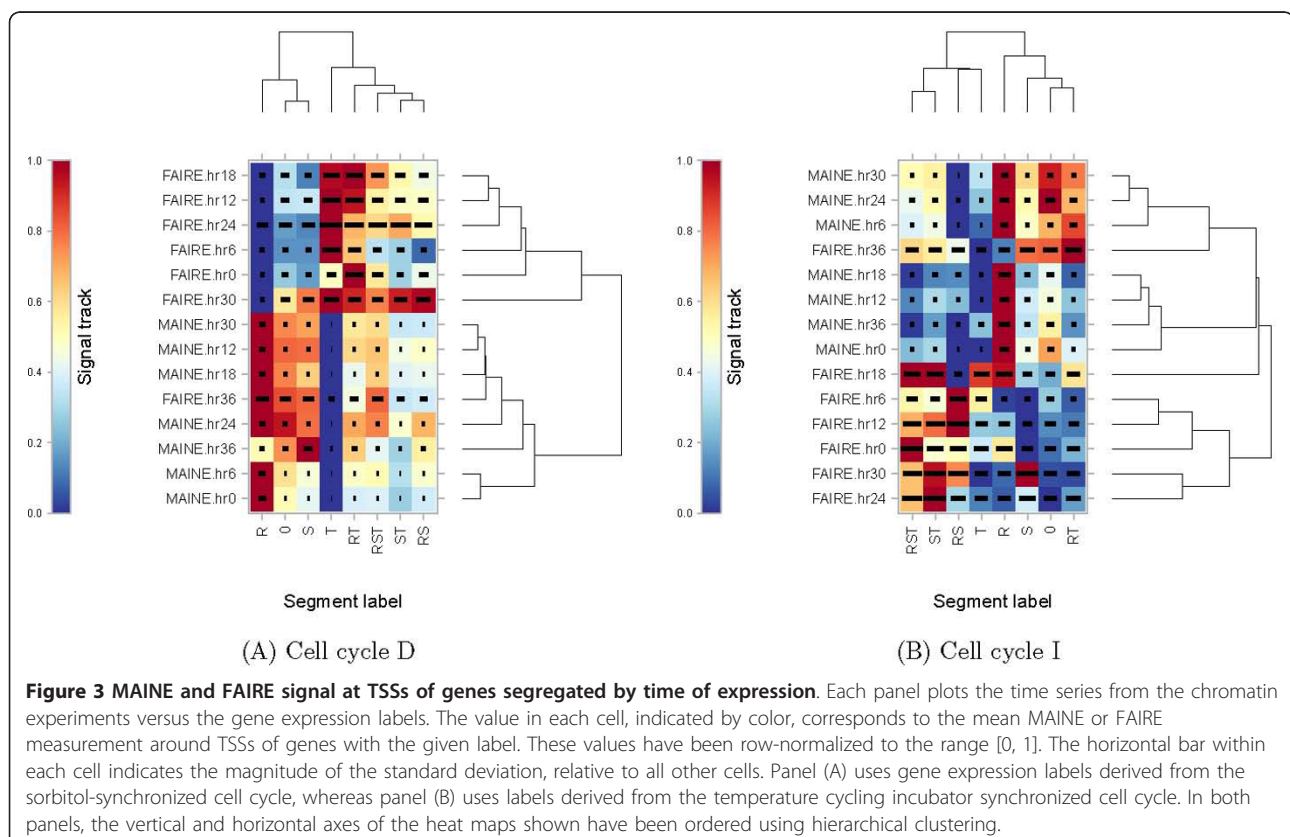
Online documentation linked from the project web page contains complete usage information for each command.

Results

Case study 1: histone modifications in the human genome

Certain post-translational covalent modifications of histones are associated with gene expression [10-13], with specific combinations known to act cooperatively [14,15]. To demonstrate Segtools's functionality, we generated a segmentation from the ChIP-seq "peaks" (genomic loci exhibiting significantly elevated read count) for core histone H3 methylated at three different lysine residues (H3K4me3, H3K27me3, H3K36me3). The Broad Institute produced these data from the chronic myelogenous leukemia cell line K562 as part of the ENCODE Project [16], and we downloaded them from the UCSC Table Browser [17] on assembly NCBI36.

We compared the segmentation against GENCODE [18] version 3c gene annotations and transcription start sites (TSSs). We classified a gene as active when the number of ENCODE Project RNA-seq [19] reads per kilobase per million mapped reads (RPKM) in the gene exceeded the 75th percentile and as inactive when the gene had 0 RPKM. We classified TSS as active when it



had at least 2 K562 cytosolic poly(A)⁺ CAGE tags mapped from the ENCODE Project CAGE data [20], and as inactive when the TSS had 0 CAGE tags. First, we used `flatten` to create a segmentation in which the label for each segment corresponds to the combination of histone modifications with a peak at that segment. For example, the “4/27” label corresponds to regions spanned by both H3K4me3 and H3K27me3 ChIP-seq peaks. We then used `aggregation` in “gene mode” to visualize the enrichment of each label around the 11,693 protein-coding GENCODE genes active in the K562 cell line. Consistent with previous studies, Figure 1a shows the enrichment of H3K4me3 (4) around active transcription start sites in the first row, depletion of H3K27me3 (27) around active genes in the second row, and enrichment of H3K36me3 (36) in the bodies of actively-transcribed genes in the third row.

Then we created Figure 1b, with `nucleotide-frequency`. It shows the increased frequency of CpG in all labels that include promoter-associated H3K4me3 (4) peaks.

Finally, we used `overlap` to explore each label’s predictive power for protein-coding TSS activity. With precision (also known as the positive predictive value) of 70.2% and recall (or sensitivity) of 54.2%, segments high in both H3K4me3 and H3K36me3 were most predictive of overlapped TSSs being active. Surprisingly, segments high in all three histone modifications were the next most predictive of TSS activity, with precision of 68.7% and recall of 20.1%, suggesting that the presence of the other two histone modifications compensates for the inhibitory effect of H3K27me3. Segments with H3K27me3 alone were the most predictive of inactive TSSs, with precision of 95.2% and recall of 30.7%, though segments also high in H3K36me3 spanned an additional 5.2% of the inactive TSSs with a precision of 83.6%. In general, `Segtools` analyses are quick and parallelize easily. For this case study, the `flatten` analysis, which operated on three segmentations consisting of around 61,000 segments spanning ~50% of the human genome, required only 15 s on a single 2.33 GHz Intel Xeon CPU. The `nucleotide-transition` command processed the 1.6 billion bases spanned by the segmentation in 4 min, the `overlap` command summarized the intersection between these segments and 73,000 transcription start sites in 17 s, and the `aggregation` aggregated the segmentation over 9,000 gene models in 2 min.

Case study 2: gene expression and local chromatin structure in the *Plasmodium falciparum* genome

We used `Segtools` to investigate the relationship between gene expression and local chromatin structure in *Plasmodium falciparum*, the parasite responsible for

the most lethal form of malaria. Le Roch et al. [21] performed microarray expression assays in two time series across the *Plasmodium* erythrocytic cell cycle, corresponding to cell cycle synchronization performed with a 5% D-sorbitol treatment (cell cycle D) and a temperature cycling incubator (cell cycle I). Recently, these data were complemented with cell cycle time series data from two assays that measure local chromatin structure [22]: formaldehyde-assisted isolation of regulatory elements (FAIRE) [23] and MNase-assisted isolation of nucleosomal elements (MAINE) [24,25]. We used `Segtools` to investigate the extent to which the local chromatin profile varies as a function of gene expression.

Our analysis consisted of three steps. First, we identified genes that were significantly expressed in each of the three primary stages of the erythrocytic cycle: ring, trophozoite and schizont. To do so, we applied the statistical criterion from [21], and we required that the gene be expressed either in the “early” or “late” gene expression experiment for the given stage. This procedure was carried out separately for the two cell cycle data sets (D and I). Second, we used a previously curated set of transcription start sites (TSSs) [26] to identify genes with a single, known TSS, and then we labeled these TSSs with one of eight labels (R, S, T, RS, RT, ST, RST, 0) indicating the stages during which the gene is expressed. This labeling was accomplished by creating a BED file for each stage and then using `flatten` to merge the separate files into a single segmentation. The flattening was carried out separately for each cell cycle data set, resulting in two distinct labelings. Third, we applied several `Segtools` commands to each of the two segmentations, using a Genomdata archive that contained the FAIRE and MAINE data.

Figure 2 shows the results of applying `length-distribution`. Because we selected a 200 bp window around each TSS, the percent coverage by “Segments” or “Bases” is identical so we specified `-no-segments` to only plot the base coverage. The figure shows that a large proportion (47%-48%) of genes with known TSSs are expressed in all three stages of the erythrocytic cycle, and only a small proportion (10%-13%) are expressed, or at least accessible to transcription factors, exclusively in a single stage. This observation is consistent across the two cell cycles. Altogether, the data indicates that only a small proportion of the genes can be expressed in a stage specific manner.

Figure 3 shows the distribution of MAINE and FAIRE values over the course of the erythrocytic cell cycle as a function of different gene expression classes, produced using `signal-distribution`. Each cell corresponds to one expression label and one time point. The color of each cell indicates the strength of the MAINE or FAIRE signal in TSSs with the corresponding label. Each row of

the plot is linearly scaled so that the minimum and maximum values are 0 and 1, respectively. Horizontal lines within the plot indicate the magnitude of the standard deviation in a given cell, relative to all other cells. Rows and columns have been ordered using the hierarchical clusterings shown on the top and right of each heat map. These two plots exhibit several intriguing features.

First, we note that the hierarchical clusterings shown along the right edge of both panels indicate that the FAIRE measurements at the end of the erythrocytic cycle (hr36) most closely resembles MAINE measurements (at hours 12, 18 and 30 in cell cycle D and hours 6, 24 and 30 in cell cycle I). This observation — that the FAIRE measurement of open chromatin at hr36 resembles measurements of closed chromatin — is consistent with the model proposed by Ponts et al., in which the parasite strongly compacts its chromatin in preparation for egress from the red blood cell at the end of the erythrocytic cycle. Second, we note that the genes expressed exclusively at the beginning of the cell cycle (R - ring stage) show an extremely strong and complementary pattern to genes expressed during the middle of the cell cycle (T - trophozoite stage). This pattern is particularly strong in cell cycle D (panel A), but also appears in cell cycle I (panel B). Apparently, ring-specific genes exhibit closed chromatin around their TSSs, whereas trophozoite-specific genes exhibit open chromatin around their TSSs. This pattern is consistent across nearly the entire cell cycle, with the possible exception of hr36, suggesting that local chromatin structure may contribute to stage-specific gene expression, but that local chromatin dynamics may not be the only mechanism regulating gene expression.

Overall, the figure shows relatively little correlation between the time at which a gene is expressed and changes in local chromatin structure. Canonically, time points 0, 6 and 12 of the MAINE/FAIRE data correspond to the ring stage, time points 18 and 24 correspond to the trophozoite, and time points 30 and 36 correspond to schizont. The absence of a strong correlation between time of expression and the degree of local chromatin compaction suggests that, though Ponts et al. have clearly demonstrated that local chromatin structure changes over the course of the erythrocytic cycle, the current analysis does not support a model in which the degree of chromatin compaction around the TSS directly correlates with the expression of the gene. Apparently, a more complex model that integrates additional types of data, such as transcription factor binding and histone modification profiles, is required to fully understand *Plasmodium*'s unusual gene expression machinery.

Discussion and Conclusions

Segtools enables the rapid exploration of a bird's-eye view of complex multi-label data, allowing researchers to easily generate and confirm hypotheses.

One challenge in creating any software toolkit is to define the scope of the project, treading a line between solving many problems and solving a few problems well. Segtools is specifically targeted toward the analysis of segmentations, which we believe will become an increasingly prevalent and useful way to make sense of collections of parallel genomic data sets. Segtools emphasizes the efficient calculation of summary statistics and publication quality visualizations thereof. Indeed, all of the figures in this article were generated directly by Segtools with no subsequent processing. Statistical hypothesis testing — that is, testing for the enrichment of a specific annotation label within a specific segment label — has not been implemented, primarily because many such tests have been proposed [27-30]. Full implementations of such tests are available in R, and Segtools can interoperate seamlessly with these existing functions. Similarly, we have not attempted to build into Segtools sophisticated functionality for pre-filtering segmentations and annotations. Segtools currently includes limited pre-processing functionality, in the form of the `flatten` and `feature-distance` commands; however, for sophisticated logical filtering operations, a toolkit such as Galaxy [31] or BEDtools [7] should be used prior to Segtools analysis.

Given the growing availability of large-scale heterogeneous functional genomics data sets, methods that allow us to quickly and easily summarize and make sense of these data are in growing demand. The two case studies included in this paper demonstrate how one can use Segtools to pick out interesting results from complex data. Individually examining many potential hypotheses one-by-one would prove laborious and difficult, but Segtools makes it trivial to perform a broad battery of exploratory data analyses and find the important features of segmentation results.

Availability and requirements

Project name: Segtools

Project home page: <http://noble.gs.washington.edu/proj/segtools>

Operating systems: Linux, Mac OS X

Programming language: Python 2.5.1-2.7, R \geq 2.10

Other requirements: Segtools requires NumPy \geq 1.3, two R packages (`latticeExtra`, `reshape`), one Python package (RPy2 \geq 2.1.3), and the Genomdata Python package for the two commands that process Genomdata files. Segtools can then be easily installed by typing `easy_setup segtools` at the shell prompt. Segtools can

also be acquired using our installation script that attempts to install Segtools and all missing dependencies, or it can be downloaded as a virtual machine complete with all dependencies. See the project home page for additional installation instructions.

License: GNU GPL

Any restrictions to use by non-academics: none

Acknowledgements

We wish to thank Mirela Andronescu, Nathan Boley, and the ENCODE Project Consortium for assistance and data. This work was funded by the National Institutes of Health [HG004695].

Author details

¹Department of Genome Sciences, University of Washington, PO Box 355065, Seattle, WA 98195-5065, USA. ²The Institute for Integrative Genome Biology, University of California, Riverside, 900 University Avenue, Riverside, CA 92521, USA. ³Department of Computer Science and Engineering, University of Washington, PO Box 352350, Seattle, WA 98195-2350, USA.

Authors' contributions

MMH and WSN conceived of and supervised the project. OJB and MMH developed the software. OJB and WSN carried out the experiments. OJB, MMH, NP, KGLR and WSN wrote the manuscript. All authors read and approved the final manuscript.

Received: 11 February 2011 Accepted: 26 October 2011

Published: 26 October 2011

References

- Day N, Hemmapharadh A, Thurman RE, Stamatoyanopoulos JA, Noble WS: **Unsupervised segmentation of continuous genomic data.** *Bioinformatics* 2007, **23**(11):1424-1426.
- Jaschek R, Tanay A: **Spatial Clustering of Multivariate Genomic and Epigenomic Information.** *RECOMB Proceedings* 2009, **5541**:170-183.
- Ernst J, Kellis M: **Discovery and characterization of chromatin states for systematic annotation of the human genome.** *Nature Biotechnology* 2010, **28**(8):817-825.
- Kharchenko PV, Alekseyenko AA, Schwartz YB, Minoda A, Riddle NC, Ernst J, Sabo PJ, Larschan E, Gorchakov AA, Gu T, Linder-Basso D, Plachetka A, Shanower G, Tolstorukov MY, Luquette LJ, Xi R, Jung YL, Park RW, Bishop EP, Canfield TP, Sandstrom R, Thurman RE, MacAlpine DM, Stamatoyanopoulos JA, Kellis M, Elgin SCR, Kuroda MI, Pirrotta V, Karpen GH, Park PJ: **Comprehensive analysis of the chromatin landscape in *Drosophila melanogaster*.** *Nature* 2010, **471**:480-485.
- Kent WJ, Sugnet CW, Furey TS, Roskin KM, Pringle TH, Zahler AM, Haussler D: **The Human Genome Browser at UCSC.** *Genome Research* 2002, **12**:996-1006.
- Giardine B, Riemer C, Hardison RC, Burhans R, Elnitski L, Shah P, Zhang Y, Blankenberg D, Albert I, Taylor J, Miller W, Kent WJ, Nekrutenko A: **Galaxy: a platform for interactive large-scale genome analysis.** *Genome Research* 2005, **15**(10):1451-1455.
- Quinlan AR, Hall IM: **BEDTools: a flexible suite of utilities for comparing genomic features.** *Bioinformatics* 2010, **26**(6):841-842.
- Bock C, Kuster GV, Halachev K, Taylor J, Nekrutenko A, Lengauer T: **Web-based analysis of (Epi-) genome data using EpiGRAPH and Galaxy.** *Methods in Molecular Biology* 2010, **628**:275-296.
- Hoffman MM, Buske OJ, Noble WS: **The Genomdata format for storing large-scale functional genomics data.** *Bioinformatics* 2010, **26**(11):1458-1459, [PMC2872006].
- Kouzarides T: **Chromatin modifications and their function.** *Cell* 2007, **128**(4):693-705.
- Barski A, Cuddapah S, Cui K, Roh TY, Schonnes DE, Wang Z, Wei G, Chepelev I, Zhao K: **High-resolution profiling of histone methylations in the human genome.** *Cell* 2007, **129**:823-837.
- Kolasinska-Zwiercz P, Down T, Latorre I, Liu T, Liu XS, Ahinger J: **Differential chromatin marking of introns and expressed exons by H3K36me3.** *Nature Genetics* 2009, **41**(3):376-381.
- Schwartz S, Meshorer E, Ast G: **Chromatin organization marks exon-intron structure.** *Nature Structural Molecular Biology* 2009, **16**(9):990-995.
- Koch C, Andrews R, Flicek P, Dillon S, Kar oz U, Clelland G, Wilcox S, Beare D, Fowler J, Couttet P, James K, Lefebvre G, Bruce A, Dovey O, Ellis P, Dharni P, Langford C, Weng Z, Birney E, Carter N, Vetriche D, Dunham I: **The landscape of histone modifications across 1% of the human genome in five human cell lines.** *Genome Research* 2007, **17**:691-707.
- Wang Z, Zhang C, Rosenfeld JA, Schonnes DE, Barski A, Cuddapah S, Cui K, Roh T, Peng W, Zhang MQ, Zhao K: **Combinatorial patterns of histone acetylations and methylations in the human genome.** *Nature Genetics* 2008, **40**(7):897-903.
- ENCODE Consortium: **The ENCODE (ENCYCLOPEDIA OF DNA ELEMENTS) Project.** *Science* 2004, **306**(5696):636-640.
- Karolchik D, Hinrichs AS, Furey TS, Roskin KM, Sugnet CW, Haussler D, Kent WJ: **The UCSC table browser retrieval tool.** *Nucleic Acids Research* 2004, **32 Database**: D493-D496.
- Harrow J, Denoeud F, Frankish A, Reymond A, Chen CK, Chrast J, Lagarde J, Gilbert JGR, Storey R, Swarbreck D, Rossier C, Ucla C, Hubbard T, Antonarakis SE, Guig  R: **GENCODE: Producing a reference annotation for ENCODE.** *Genome Biology* 2006, **7**(Suppl 1):S4.
- ENCODE Consortium: **A user's guide to the encyclopedia of DNA elements (ENCODE).** *PLoS Biology* 2011, **9**(4):e1001046.
- Takahashi H, Kato S, Murata M, Carninci P: **CAGE (Cap Analysis of Gene Expression): A Protocol for the Detection of Promoter and Transcriptional Networks.** *Methods in Molecular Biology* 2012, **784**:181-200.
- Roch KGL, Zhou Y, Blair PL, Grainger M, Moch JK, Haynes JD, de la Vega P, Holder AA, Batalov S, Carucci DJ, Winzeler EA: **Discovery of gene function by expression profiling of the malaria parasite life cycle.** *Science* 2003, **301**(5639):1503-1508.
- Ponts N, Harris EY, Prudhomme J, Wick I, Eckhardt-Ludka C, Hicks GR, Hardiman G, Lonardi S, Le Roch KG: **Nucleosome landscape and control of transcription in the human malaria parasite.** *Genome Research* 2010, **20**(2):228-238.
- Giresi PG, Lieb JD: **Isolation of active regulatory elements from eukaryotic chromatin using FAIRE (Formaldehyde Assisted Isolation of Regulatory Elements).** *Methods* 2009, **48**(3):233-239.
- Gupta S, Dennis J, Thurman RE, Kingston R, Stamatoyanopoulos JA, Noble WS: **Predicting human nucleosome occupancy from primary sequence.** *PLoS Computational Biology* 2008, **4**(8):e10000134, [PMC2515632].
- Kaplan N, Moore IK, Fondufe-Mittendorf Y, Gossett AJ, Tillo D, LeProust YFEM, Hughes TR, Lieb JD, Widom J, Segal E: **The DNA-encoded nucleosome organization of a eukaryotic genome.** *Nature* 2009, **458**(7236):362-366.
- Ponts N, Harris EY, Lonardi S, Le Roch KG: **Nucleosome occupancy at transcription start sites in the human malaria parasite: A hard-wired evolution of virulence?** *Infection Genetics and Evolution* 2011, **11**(4):716-724.
- Blakesley RW, Hansen NF, Mullikin JC, Thomas PJ, McDowell JC, Maskeri B, Young AC, Benjamin B, Brooks SY, Coleman BI, Gupta Y, Ho S, Karlins EM, Maduro QL, Stantripop S, Tsurgeon C, Vogt JL, Walker MA, Masiello CA, Guan X, Bouffard GG, Green ED: **An intermediate grade of finished genomic sequence suitable for comparative analyses.** *Genome Research* 2004, **14**(11):2235-2244.
- Redon R, Ishikawa S, Fitch KR, Feuk L, Perry GH, Andrews TD, Fiegler H, Shapero MH, Carson AR, Chen W, Cho EK, Dallaire S, Freeman JL, Gonzalez JR, Gratacos M, Huan J, Kalaitzopoulos D, Komura D, MacDonal JR, Marshall CR, Mei R, Montgomery L, nad K Okamura KN, Shen F, Somerville MJ, Tchinda J, Valsesia A, Woodwork C, Yang F, Zhang J, Zerjal T, Zhang J, Armengol L, CONrad DF, Estivill X, Tyler-Smith C, Carter NP, Aburatani H, Lee C, Jones KW, Scherer SW, Hurler ME: **Global variation in copy number in the human genome.** *Nature* 2006, **444**:444-454.
- Bickel PJ, Boley N, Brown JB, Huang H, Zhang NR: **Subsampling methods for genomic inference.** *Annals of Applied Statistics* 2010, **4**(4):1660-1697.
- McLean CY, Bristoeer D, Hiller M, Clarker SL, Schaar BT, Lowe CB, Wenger AM, Bejerano G: **GREAT improves functional interpretation of cis-regulatory regions.** *Nature Biotechnology* 2010, **28**(5):495-501.
- Goecks J, Nekrutenko A, Taylor J: **Galaxy: a comprehensive approach for supporting accessible, reproducible, and transparent computational research in the life sciences.** *Genome Biology* 2010, **11**(8):R86.

doi:10.1186/1471-2105-12-415

Cite this article as: Buske et al.: Exploratory analysis of genomic segmentations with Segtools. *BMC Bioinformatics* 2011 **12**:415.