



HAL
open science

Influence of water on the circulation of the West Nile Virus in horses in Southern France

Sophie Pradier, Alain Sandoz, Gaëtan Lefebvre, Annelise Tran, Sylvie Lecollinet, Agnès Leblond

► **To cite this version:**

Sophie Pradier, Alain Sandoz, Gaëtan Lefebvre, Annelise Tran, Sylvie Lecollinet, et al.. Influence of water on the circulation of the West Nile Virus in horses in Southern France. *Retrovirology*, 2010, 7, pp.P186. 10.1186/1742-4690-7-S1-P186 . hal-02657913

HAL Id: hal-02657913

<https://hal.inrae.fr/hal-02657913>

Submitted on 30 May 2020

HAL is a multi-disciplinary open access archive for the deposit and dissemination of scientific research documents, whether they are published or not. The documents may come from teaching and research institutions in France or abroad, or from public or private research centers.

L'archive ouverte pluridisciplinaire **HAL**, est destinée au dépôt et à la diffusion de documents scientifiques de niveau recherche, publiés ou non, émanant des établissements d'enseignement et de recherche français ou étrangers, des laboratoires publics ou privés.



Distributed under a Creative Commons Attribution 4.0 International License



POSTER PRESENTATION

Open Access

Influence of water on the circulation of the West Nile Virus in horses in Southern France

Sophie Pradier^{1,2*}, Alain Sandoz³, Gaëtan Lefebvre³, Annelise Tran⁴, Sylvie Lecollinet⁵, Agnès Leblond^{2,6}

From 16th International Symposium on HIV and Emerging Infectious Diseases
Marseille, France. 24-26 March 2010

Background

West Nile Virus (WNV) affects humans and horses, potentially causing severe neurological manifestations. Recent outbreaks of West Nile fever in horses were reported in Camargue (2000, 2004), Var (2003) and Pyrénées Orientales (2006). The circulation of this virus is strongly influenced by environmental conditions. This study aimed at explaining the circulation of WNV in

horses by quantifying water bodies around equine stables using Landsat images.

Methods

A total of 135 stables were selected in three French departments (Hérault, Gard, Bouches-du-Rhône) and 1161 horses were tested by serological analysis between 2007 and 2008.

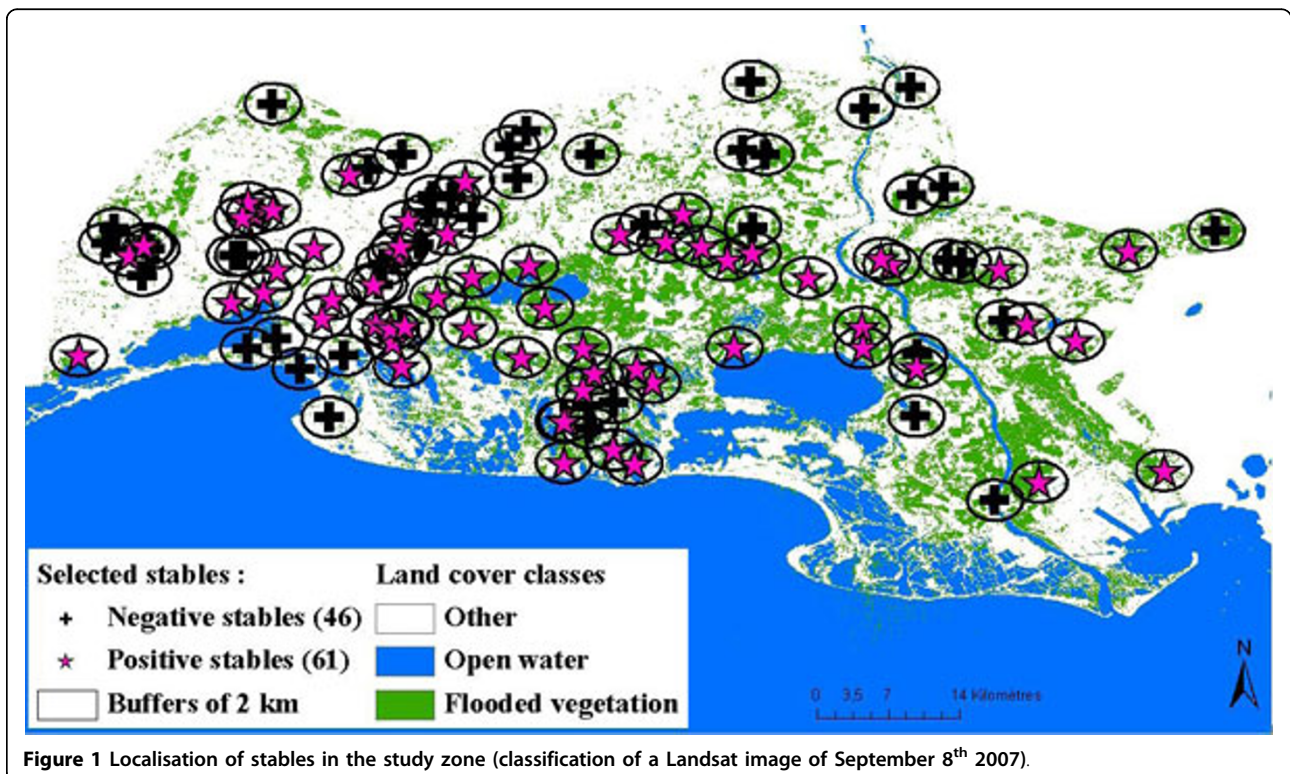


Figure 1 Localisation of stables in the study zone (classification of a Landsat image of September 8th 2007).

* Correspondence: spradier@vet-alfort.fr

¹Clinique équine ENVA, Maisons-Alfort, France

15 Landsat images (August 2006 to August 2008) were classified into 3 classes: open water, flooded vegetation and other. Surface areas of the first two classes were calculated for buffers of 2 to 5 km around each stable and for each date.

Two multivariate analyses were conducted: GLMs to identify which environmental variables were involved in the viral circulation in stables and GRMs to identify the horse variables linked to WNV circulation after retrieving the effect of the environment.

Results

The best model distinguishing 46 negative stables (no positive horse considering an error threshold of 0.15) from 61 positive stables (at least 1 positive horse) used 2 km buffers and included mean area of flooded vegetation, total number of horses present in the stable, mean area of open water and X and Y geographic coordinate. The first two variables had a positive effect and the other three a negative effect. The model predicted correctly 73% of positive stables and 71% of negative ones. At the horse level, breed, activity and age were significant. See Figure 1.

Discussion

These results can be used to target the surveillance of this human and equine disease in Southern France.

Author details

¹Clinique équine ENVA, Maisons-Alfort, France. ²UR 346 Epidémiologie animale INRA, Saint Genès Champanelle, France. ³Tour du Valat, Arles, France. ⁴CIRAD Agirs, Montpellier, France. ⁵UMR 1161 Virologie INRA AFSSA ENVA, Maisons-Alfort, France. ⁶Clinéquine ENVL, Marcy l'étoile, France.

Published: 11 May 2010

doi:10.1186/1742-4690-7-S1-P186

Cite this article as: Pradier *et al.*: Influence of water on the circulation of the West Nile Virus in horses in Southern France. *Retrovirology* 2010 **7** (Suppl 1):P186.

Submit your next manuscript to BioMed Central
and take full advantage of:

- Convenient online submission
- Thorough peer review
- No space constraints or color figure charges
- Immediate publication on acceptance
- Inclusion in PubMed, CAS, Scopus and Google Scholar
- Research which is freely available for redistribution

Submit your manuscript at
www.biomedcentral.com/submit

