



HAL
open science

A bi-dimensional genome scan for prolificacy traits in pigs shows the existence of multiple epistatic QTL

José Luis Noguera, Carmen Rodriguez, Luis Varona, Anna Tomás, Gloria Muñoz, Oscar Ramirez, Carmen Barragán, Meritxell Arqué, Jean Pierre Bidanel, Marcel Amills, et al.

► To cite this version:

José Luis Noguera, Carmen Rodriguez, Luis Varona, Anna Tomás, Gloria Muñoz, et al.. A bi-dimensional genome scan for prolificacy traits in pigs shows the existence of multiple epistatic QTL. BMC Genomics, 2009, 10 (december), pp.636. 10.1186/1471-2164-10-636 . hal-02663730

HAL Id: hal-02663730

<https://hal.inrae.fr/hal-02663730>

Submitted on 31 May 2020

HAL is a multi-disciplinary open access archive for the deposit and dissemination of scientific research documents, whether they are published or not. The documents may come from teaching and research institutions in France or abroad, or from public or private research centers.

L'archive ouverte pluridisciplinaire **HAL**, est destinée au dépôt et à la diffusion de documents scientifiques de niveau recherche, publiés ou non, émanant des établissements d'enseignement et de recherche français ou étrangers, des laboratoires publics ou privés.

Research article

Open Access

A bi-dimensional genome scan for prolificacy traits in pigs shows the existence of multiple epistatic QTL

José L Noguera*¹, Carmen Rodríguez², Luis Varona¹, Anna Tomàs³, Gloria Muñoz², Oscar Ramírez³, Carmen Barragán², Meritxell Arqué¹, Jean P Bidanel⁴, Marcel Amills³, Cristina Ovilo² and Armand Sánchez³

Address: ¹Genética i Millora Animal, IRTA-Lleida, 25198 Lleida, Spain, ²Departamento de Mejora Genética Animal, SGIT-INIA, 28040 Madrid, Spain, ³Departament de Ciència Animal i dels Aliments, UAB, 08193 Bellaterra, Spain and ⁴INRA, UR337 Station de Génétique Quantitative et appliquée F-78350 Jouy-en-Josas, France

Email: José L Noguera* - joseluis.noguera@irta.es; Carmen Rodríguez - valdo@inia.es; Luis Varona - lvarona@unizar.es; Anna Tomàs - anna.tomas@cresa.uab.cat; Gloria Muñoz - gloriammster@gmail.com; Oscar Ramírez - oscar.ramirez@upf.edu; Carmen Barragán - barragan@inia.es; Meritxell Arqué - marqueclemens@gmail.com; Jean P Bidanel - jean-pierre.bidanel@jouy.inra.fr; Marcel Amills - marcel.amills@uab.es; Cristina Ovilo - ovilo@inia.es; Armand Sánchez - armand.sanchez@uab.es

* Corresponding author

Published: 29 December 2009

Received: 15 June 2009

BMC Genomics 2009, 10:636 doi:10.1186/1471-2164-10-636

Accepted: 29 December 2009

This article is available from: <http://www.biomedcentral.com/1471-2164/10/636>

© 2009 Noguera et al; licensee BioMed Central Ltd.

This is an Open Access article distributed under the terms of the Creative Commons Attribution License (<http://creativecommons.org/licenses/by/2.0>), which permits unrestricted use, distribution, and reproduction in any medium, provided the original work is properly cited.

Abstract

Background: Prolificacy is the most important trait influencing the reproductive efficiency of pig production systems. The low heritability and sex-limited expression of prolificacy have hindered to some extent the improvement of this trait through artificial selection. Moreover, the relative contributions of additive, dominant and epistatic QTL to the genetic variance of pig prolificacy remain to be defined. In this work, we have undertaken this issue by performing one-dimensional and bi-dimensional genome scans for number of piglets born alive (NBA) and total number of piglets born (TNB) in a three generation *Iberian* by *Meishan* F₂ intercross.

Results: The one-dimensional genome scan for NBA and TNB revealed the existence of two genome-wide highly significant QTL located on *SSC13* ($P < 0.001$) and *SSC17* ($P < 0.01$) with effects on both traits. This relative paucity of significant results contrasted very strongly with the wide array of highly significant epistatic QTL that emerged in the bi-dimensional genome-wide scan analysis. As much as 18 epistatic QTL were found for NBA (four at $P < 0.01$ and five at $P < 0.05$) and TNB (three at $P < 0.01$ and six at $P < 0.05$), respectively. These epistatic QTL were distributed in multiple genomic regions, which covered 13 of the 18 pig autosomes, and they had small individual effects that ranged between 3 to 4% of the phenotypic variance. Different patterns of interactions ($a \times a$, $a \times d$, $d \times a$ and $d \times d$) were found amongst the epistatic QTL pairs identified in the current work.

Conclusions: The complex inheritance of prolificacy traits in pigs has been evidenced by identifying multiple additive (*SSC13* and *SSC17*), dominant and epistatic QTL in an *Iberian* × *Meishan* F₂ intercross. Our results demonstrate that a significant fraction of the phenotypic variance of swine prolificacy traits can be attributed to first-order gene-by-gene interactions emphasizing that the phenotypic effects of alleles might be strongly modulated by the genetic background where they segregate.

Background

In the last few years, a major breakthrough in the understanding of the genetic factors that shape complex traits has been the demonstration that, in several species, a non-negligible fraction of the genetic variance is explained by epistatic interactions. The recent identification of multiple epistatic QTL controlling complex traits in mice [1-4], chickens [5,6], and in model organisms such as yeast [7] and *Drosophila melanogaster* [8,9] has been a major achievement in the understanding of the genetic nature of complex traits. In addition, the discovery that gene expression is modulated, amongst others, by a plethora of regulatory RNAs with diverse functions and properties has added a new and thick layer of complexity in the subsequent identification of the polymorphisms involved in these interactions, since many of them might reside in non-coding regions [10].

In domestic species, traits relying on reproductive physiology, such as prolificacy and fecundity, have a notable impact on the financial outcome of farming enterprises. In pigs, prolificacy is a complex trait that displays a low heritability and strong heterosis [11]. One-dimensional studies have reported the existence of several QTL affecting litter size in pigs [12-16]. However, only one of the reported QTL was significant on a genome-wide level ($p < 0.05$) [16], and there was a general lack of positional concordance amongst different genome scans [17]. More importantly, these QTL studies exclusively dissected the additive and dominance components of litter size, thus neglecting the analysis of epistatic interactions that, paradoxically, are expected to explain a substantial portion of genetic variation of reproductive traits [18]. In consequence, many unsolved questions concerning to the genetic architecture of pig prolificacy still remain to be answered. Which are the specific contributions of dominance and epistasis in modelling the phenotypic expression of this complex trait? If epistasis is important, which are the dimensions, geometry and intricacy of the network of interacting loci and which types of epistatic interactions are more relevant? In a cross between two inbred mice strains Peripato *et al.* [3] demonstrated the existence of eight interacting QTL that explain almost 49% of the phenotypic variance of litter size in this cross. These results highlighted the importance of non additive genetic variance as a fundamental component of prolificacy. Nevertheless, laboratory mice strains are usually bred in a very stable environment, where fluctuations are kept to a minimum, and they have been the subject of an intense process of genetic selection without parallel in any other mammal species. Moreover, mice belong to a different superorder (Euarchontoglires) than most of mammalian domestic species (Laurasiatheria), so it is reasonable to expect that in these two distantly related taxonomic groups the biology of reproduction can differ in many instances.

The relevance of the aforementioned questions led us to analyse the genetic architecture of prolificacy traits in pigs. In this way, we have performed an F₂ intercross between two distinct European and Asian breeds, the *Iberian* and *Meishan* porcine breeds. Chinese *Meishan* is one of the most prolific pig breeds of the world being an excellent candidate population to perform these kinds of studies [19]. *Iberian* is an autochthonous Spanish breed with a very low prolificacy [20]. There is a very marked phenotypic difference for prolificacy traits between these two breeds (around 7 piglets per parity), being 14.3 the mean for the number of piglets born alive per parity of the *Meishan* breed [19] and 7.0 the mean for this trait of the *Iberian Guadyerbas* strain [20]. Interestingly, the ancestors of these breeds are assumed to have diverged at least 150,000 years before present without subsequent introgressions [21]. In consequence, it is reasonable to expect that these breeds have evolved, since then, by following independent processes of artificial selection and genetic drift, thereby establishing different adaptive epistatic genetic complexes [22]. In the current work, we have performed both a one-dimensional and a bi-dimensional genome-wide scans for prolificacy traits by employing this *Iberian* by *Meishan* F₂ intercross as a genetic resource. Our main objective was to elucidate if epistasis makes a major contribution in shaping the phenotypic variability of prolificacy in pigs.

Results

Phenotypic data recorded in the F₂ sows and linkage map

A description of the data and statistics of phenotypic records of number of piglets born alive (NBA) and total number of piglets born (TNB) in the F₂ population is given in Table 1. The phenotypic variance was 10.24 and 9.61 for TNB and NBA, respectively. The linkage map of the 115 markers used in the QTL analyses is shown in Table 2. Marker order and distances as well as average chromosome lengths were in general agreement with other mapping projects and the USDA genome database <http://www.animalgenome.org/pig/>. Markers provided coverage of the 18 autosomes, with intervals between adjacent markers that were below 20 cM whenever possible. The average marker interval was 17.6 cM (sex-averaged map distance).

Table 1: Data structure for number of piglets born alive (NBA) and total number of piglets born (TNB) in the Iberian × Meishan F₂ experimental population.

	Order of parity				All
	1	2	3	4	
N of litters	252	225	210	194	881
NBA	7.9 (3.4) ^a	8.3 (3.0)	8.9 (2.9)	9.2 (3.0)	8.5 (3.2)
TNB	8.7 (3.0)	8.5 (3.1)	9.3 (2.9)	9.7 (3.1)	9.1 (3.1)

^aMean (sd)

Table 2: Description of the markers employed for linkage analyses

SSC	Marker	Pos ¹	SSC ²	Marker	Pos	SSC	Marker	Pos	SSC	Marker	Pos
1	SW1515	0	5	SJ024	0	9	SW983	0	13	S0076	0
	ESR1	10		SWR453	44		SW21	10		SWR1008	26
	CGA	54		SW2425	55		SW911	33		SW398	48
	S0113	82		S0005	71		SW2571	69		SW2440	69
	S0151	92		SW1987	80		SW2093	95		SW769	84
	SW1828	121		IGF1	99		SW2116	130		SW857	0
	DBH	152		SW378	117		SW1349	149		SW1125	19
2	IGF2	0	6	MC1R	0	10	S0038	0	14	SW210	37
	S0141	35		SW973	22		SW1894	25		S0007	50
	SW240	49		SW1057	47		SW2195	40		SW1081	61
	SW395	65		S0087	64		S0070	52		SW1557	81
	S0226	75		SW316	87		SW1991	66		SW2515	96
	S0378	94		S0228	104		SW1626	94		S0355	0
	S0036	140		SW1881	119		SWR67	104		SW919	10
3	SW72	0	7	SW1328	153	11	S0385	0	15	SW1111	25
	S0206	16		SW2419	160		S0182	26		S0149	50
	S0164	33		S0025	0		SW2008	38		SW936	70
	S0216	64		TNFB	64		S0071	56		SW1119	100
	S0002	88		S0066	87		SW703	85		SW742	0
	SW349	98		SW632	117		SW2413	100		PRLR	20
	S0214	63		S0017	73		SW1956	71		SW2142	14
4	SW2403	0	8	S0212	149	12	SW2490	0	16	SW403	30
	S0301	14		S0101	159		SW2494	10		SW2517	60
	S0001	22		SW2410	0		SW1307	43		S0061	88
	SW839	45		SWR1101	42		SW874	59		SW24	0
	S0214	63		S0017	73		SW1956	71		SW2142	14
	SW445	78		S0225	91		S0106	84		SW1920	30
	VCAMI	99		SW61	113		SWR1021	100		S0359	43
S0097	123	BMPRIβ	122			SW2431	71				
								18	SW1023	0	
									SW787	20	
									S0120	32	
									SWR414	54	

¹Pos: Position of the marker; ²SSC, *Sus Scrofa Chromosome*

One dimensional genome scan for TNB and NBA

Results of the whole-genome scan using a single-QTL model for TNB and NBA are summarized in Table 3. Two genome-wide highly significant QTL were identified on SSC13 ($P < 0.001$) and SSC17 ($P < 0.01$) at similar positions for both traits. In SSC13, the single QTL for NBA and TNB were found at positions 50 and 55 cM, respectively (Table 3), sharing an overlapping region located between markers SW398 and SW2440. The most likely position for

the QTL found on SSC17 was at 22 cM for both traits (Table 3).

Highly significant additive and dominance effects were detected for the SSC13 and SSC17 QTL, although the direction of these effects (*Iberian vs. Meishan*) depended on the chromosome under consideration. For instance, the QTL on SSC13 for NBA increased additively by 0.71 (± 0.18) piglets per copy of the *Meishan* allele and it had a dominance effect of 0.69 (± 0.25) piglets. Conversely, the

Table 3: Significant single quantitative trait loci (QTL) for number of piglets born alive (NBA) and total number of piglets born (TNB)

Trait	SSC	Position cM (CI)	LR	Genome-wide significance level (P-value)	a (SE)*	d (SE)
NBA	13	50 (40-59)	24.61	< 0.001	0.71 (0.18) (Meishan)	0.69 (0.25)
	17	22 (11-42)	22.48	< 0.01	0.73 (0.19) (Iberian)	-0.82 (0.29)
TNB	13	55 (43-64)	21.93	< 0.01	0.61 (0.18) (Meishan)	0.89 (0.28)
	17	22 (12-62)	21.25	< 0.01	0.68 (0.18) (Iberian)	-0.75 (0.28)

SSC: *Sus Scrofa Chromosome*. cM: centimorgan. CI: confidence interval. LR: Likelihood ratio. a: additive effect. d: dominance effect. SE: standard error.

* Increase in the number of piglets per copy of either *Meishan* or *Iberian* allele.

Iberian allele was the one associated with an increase in 0.73 (± 0.19) piglets per copy for the QTL on *SSC17*. Moreover, this QTL on *SSC17* displayed a negative dominance effect (-0.82 ± 0.29). We estimated the degree of dominance as the ratio *d/a* between the estimated dominance (*d*) and the absolute value of the additive effect (*a*). Values of *d/a* larger than unity corresponds to overdominance, while a *d/a* ratio between 0 and 1 represents partial dominance. In both cases (QTL on *SSC13* and *SSC17*), the estimated *d/a* values were consistent with a complete dominance situation. Similar values of additive and dominance effects were obtained for the TNB QTL on *SSC13* and *SSC17* (Table 3), a result that is not surprising since these two traits are highly correlated. Besides, the proportion of phenotypic variance explained by these two single QTL detected on *SSC13* and *SSC17* ranged from 2% to 3% for both TNB and NBA.

Bi-dimensional genome scans for NBA and TNB

Identification of multiple interacting QTL for NBA and TNB

Results from the bi-dimensional genome scan for NBA are shown in Table 4. Four bi-dimensional genome-wide highly significant (*P* < 0.01) and five significant (*P* < 0.05) epistatic interactions between QTL were found. We confirmed that all the observed epistatic interactions were consistently detected across families rather than being the consequence of a single sire effect, a feature that is particularly important when the number of founder males is moderate or even small. The results obtained through the

likelihood ratio test were further confirmed by using other approaches. First, a false discovery rate (FDR) was calculated based on the nominal *P*-values every 30 cM, with a result of 0.018 for a *P*-value lower than 0.001. Moreover, parametric bootstrapping confirmed the significance of the results.

A graphical overview of the epistatic interactions for NBA (red arrows) is shown in Figure 1. As much as twelve of the 18 pig autosomes (1, 5, 6, 7, 8, 9, 10, 12, 13, 14, 15 and 18) were involved in these interactions, forming a complex network with a non-radial geometry. This means that a specific region did not interact simultaneously with multiple loci, but with a very limited number of them (usually interactions were one to one). For example, the *SSC12* region located at 11 cM, interacted significantly with another *SSC12* region at 89 cM (Figure 1; Table 4). Similarly, two non-overlapping *SSC6* QTL regions showed epistatic interactions, one of them with QTL on *SSC1* and *SSC7* (*SSC6*, 54-69 cM) and another one with *SSC14* (*SSC6*, 1-10 cM). As shown in Figure 1, other pig chromosomes exhibiting more than one significant interacting QTL were *SSC1* (at positions 76 and 153 cM respectively), and *SSC7* (at positions 28 cM, and 107 cM). An interesting feature of our analysis was that the highly significant NBA QTL identified in the one-dimensional genome scan (*SSC13* at 50 cM and *SSC17* at 22 cM) did not show any significant epistatic interaction with other regions across the genome, meaning that its mode of

Table 4: Results of a bi-dimensional genome scan for number of piglets born alive (NBA)

<i>SSC</i> ₁	<i>Position</i> ₁ cM (CI)	<i>SSC</i> ₂	<i>Position</i> ₂ cM (CI)	LR	(<i>P</i> -value)	<i>a</i> ₁ (SE)	<i>d</i> ₁ (SE)	<i>a</i> ₂ (SE)	<i>d</i> ₂ (SE)	<i>a</i> × <i>a</i> (SE)	<i>a</i> × <i>d</i> (SE)	<i>d</i> × <i>a</i> (SE)	<i>d</i> × <i>d</i> (SE)
1	153 (146-153)	6	55 (50-60)	27.34	<0.05								3.34 (0.72)
1	76 (69-84)	7	107 (101-116)	31.43	<0.01	-0.53 (0.18)		0.73 (0.31)	0.85 (0.38)			2.61 (0.57)	3.83 (0.97)
5	66 (59-73)	18	11 (2-20)	27.97	<0.05			0.71 (0.24)		-1.49 (0.40)		1.75 (0.47)	
6	59 (54-64)	7	28 (12-37)	31.25	<0.01							2.88 (0.69)	6.20 (1.51)
6	4 (1-10)	14	29 (25-36)	30.27	<0.01			0.61 (0.25)				1.63 (0.42)	2.89 (0.74)
8	92 (88-94)	10	87 (81-103)	28.59	<0.05				-0.82 (0.32)			-1.50 (0.44)	-2.86 (0.75)
9	4 (1-7)	13	73 (66-82)	30.58	<0.01			-0.75 (0.22)		0.87 (0.35)			-3.31 (0.65)
10	99 (89-104)	15	3 (1-8)	29.41	<0.05					1.25 (0.34)	-1.25 (0.36)		-1.30 (0.62)
12	11 (9-18)	12	89 (74-96)	28.82	<0.05	0.34 (0.17)		0.90 (0.22)		-1.36 (0.30)	0.83 (0.39)		2.45 (0.60)

*SSC*₁ and *Position*₁: Chromosome and position, in centimorgans (cM), of the first location. *SSC*₂ and *Position*₂: Chromosome and position, in centimorgans (cM), of the second location. CI: Confidence interval. LR, Likelihood ratio of contrast of the model with and without epistasis. *a*₁ additive effect of the first location. *a*₂ additive effect of the second location *d*₁ dominance effect of the first location. *d*₂ dominance effect of the second location. Epistasis type: *a* × *a*: additive by additive effect; *a* × *d*: additive by dominance effect; *d* × *a*: dominance by additive effect; *d* × *d*, dominance by dominance effect. SE: standard error. Only significant values of *a*, *d*, and their interactions are shown.

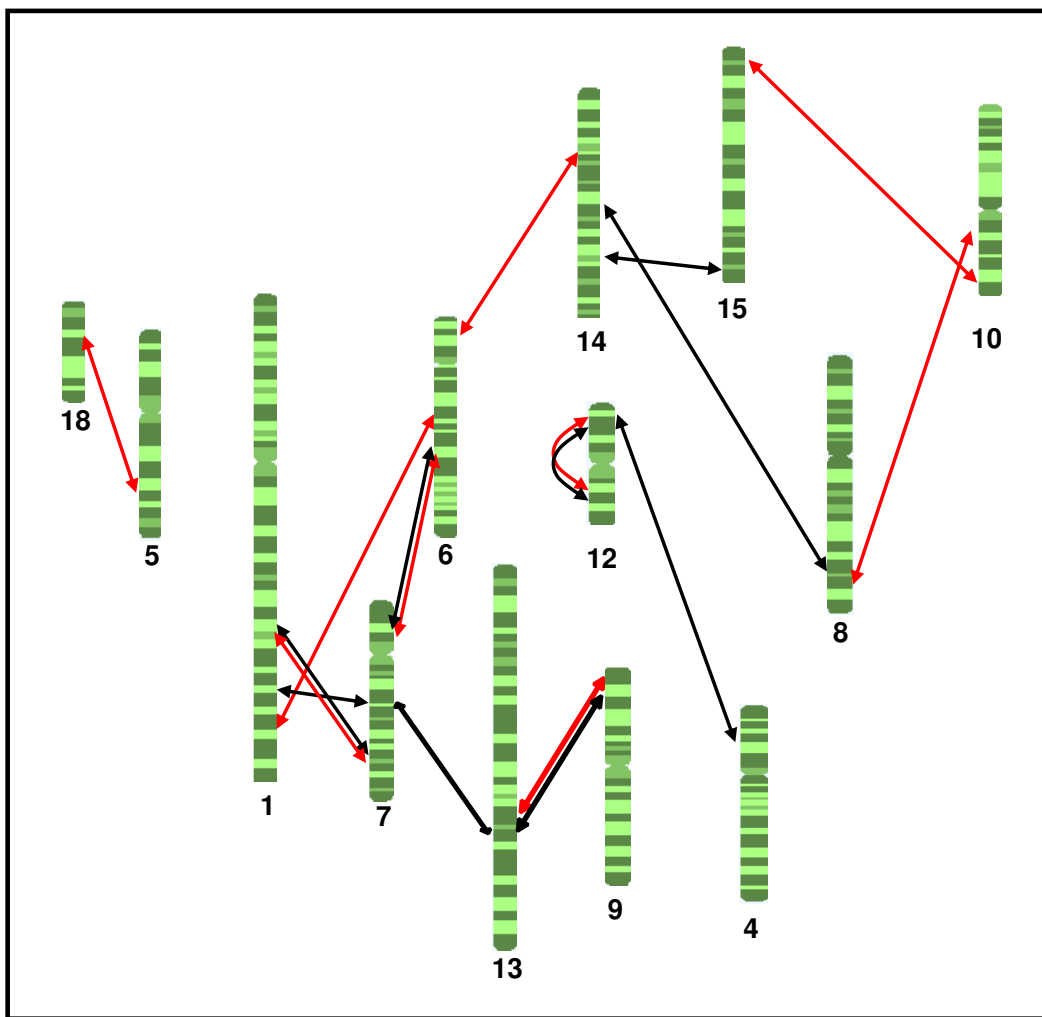


Figure 1
Network representation of the epistatic QTL interactions in thirteen pig chromosomes (SSC) for prolificacy traits NBA (red arrows) and TNB (black arrows).

action is purely additive. In contrast, a NBA QTL found on another region of *SSC13* (73 cM) had significant epistatic interactions with a QTL located at position 4 cM of *SSC9*. Similarly, in mice, Peripato et al. [3] identified two significant QTL for litter size in a one-dimensional genome scan (chromosomes 7 and 12) that did not emerge in the bi-dimensional analysis (chromosomes 2, 4, 5, 11, 14, 15 and 18). In the light of these results and ours, we could conclude that there is a low concordance between the QTL identified in one- and bi-dimensional genome scans. This means that, in general, the additive and epistatic components of prolificacy traits encompass different sets of genes.

With regard to the bi-dimensional genome-wide scan for TNB, we found three genome-wide highly significant ($P <$

0.01) and six significant ($P < 0.05$) epistatic interactions (Table 5; Figure 1). Thirteen out of the 18 pig autosomes were involved in the epistatic QTL interactions for both traits. However, the network of interacting QTL for TNB was not identical to the one reported for NBA. In this sense, only around one third of the QTL epistatic interactions detected in the current study were coincident in both traits. This was an unexpected result since NBA and TNB display a high genetic correlation ($r_g \sim 0.9$) and they are expected to share a similar genetic architecture [11]. Moreover, the number of chromosomes displaying multiple interactions was higher for TNB (*SSC1*, 7, 12, 13 and 14) than for NBA. Notably, four epistatic QTL on *SSC7* showed significant interactions with QTL located on *SSC6* (60 cM), *SSC13* (77 cM) and *SSC1* (79 cM and 139 cM, respectively). Other epistatic interactions involved two

overlapping regions of *SSC13* with one region of *SSC7* and one *SSC9* QTL, a feature that demonstrates the remarkable complexity and intricacy of these networks. Finally, it is worth mentioning that if we would have assumed a type 1 error $\alpha = 0.10$, which corresponds to a genome-wide critical value of 25.14 for the LR test, we would have been able to detect 11 and 9 additional epistatic interactions between QTL across the genome for NBA and TNB, respectively (results not shown).

Partition of the phenotypic variance explained by epistatic QTL

We estimated the proportion of the phenotypic variance explained by epistatic genetic components for each TNB and NBA significant epistatic QTL pair. This contribution to the total phenotypic variance ranged from 3.26% (*SSC14-SSC15*) to 4.04% (*SSC12-SSC12*) for TNB and from 3.10% (*SSC1-SSC6*) to 3.62% (*SSC9-SSC13*) for NBA. The relative contribution of epistasis to the total phenotypic variance was estimated by adding the estimates of the partial epistatic effects of each epistatic interaction. The total phenotypic variance explained by the joint genetic effects of all epistatic QTL pairs for NBA and TNB was 37.6% and 42.4%, respectively. Nevertheless, we would like to mention that this approach might lead to an overestimation of the epistatic contribution because the models employed in our analysis are exclusive [23]. We have calculated the repeatability with a standard animal model, resulting in an estimated value of 0.27 for both TNB and NBA. This value should be considered as the

limit of the total variance explained by genetic effects. This result evidences that our estimates of epistatic contributions are clearly overestimated but, in spite of this drawback, we think it is reasonable to assume that a significant proportion of the phenotypic variance of prolificacy is explained by the joint genetic effects of epistatic QTL.

Classification of epistatic effects for NBA and TNB

All four forms of epistasis ($a \times a$, $a \times d$, $d \times a$ and $d \times d$) were detected among the significant epistatic pairs. In total, 9 $a \times a$, 7 $a \times d$, 11 $d \times a$, and 16 $d \times d$ significant interactions were detected (Tables 4 and 5). For the *SSC1-SSC6* (NBA) and *SSC8-SSC14* (TNB) epistatic pairs, only one type of epistasis was significant ($d \times d$, and $a \times d$, respectively); whereas, the remaining pairs presented two or more types of epistasis, leading to more complex patterns of interactions. We plotted the genotypic values expected for each genotypic class (Figure 2), thus identifying 'dominance-by-dominance' and 'coadaptive' patterns of epistasis as described by Carlborg and Haley [18] and Carlborg *et al.* [4]. The 'dominance-by-dominance' pattern of epistasis was found in several epistatic QTL pairs and corresponded to interactions where a significant $d \times d$ effect was found. In positive $d \times d$ interactions (Figure 2a), the genotypic value of double heterozygotes $I_1M_1-I_2M_2$, (being I = Iberian alleles and M = Meishan alleles for loci 1 and 2) was superior to that of simple heterozygotes ($I_1M_1-I_2I_2$, $I_1M_1-M_2M_2$, $I_1I_1-I_2M_2$, and $M_1M_1-I_2M_2$); a pattern that was reversed in negative $d \times d$ interactions (Figure 2b).

Table 5: Results of a bi-dimensional genome scan for total number of piglets born (TNB)

SSC ₁	Position ₁ cM (CI)	SSC ₂	Position ₂ cM (CI)	LR	(P-value)	a ₁ (SE)	d ₁ (SE)	a ₂ (SE)	d ₂ (SE)	a × a (SE)	a × d (SE)	d × a (SE)	d × d (SE)
1	79 (72-84)	7	107 (100-116)	31.7 0	<0.01	-0.55 (0.17)	-0.68 (0.29)	0.68 (0.29)				2.27 (0.49)	3.29 (0.85)
1	139 (132-147)	7	89 (84-96)	28.4 7	<0.05				0.63 (0.31)		-2.10 (0.54)	2.08 (0.60)	2.18 (1.04)
4	23 (21-26)	12	5 (1-10)	27.4 5	<0.05		0.65 (0.25)			0.80 (0.33)		-0.92 (0.35)	-2.61 (0.57)
6	60 (55-69)	7	24 (12-33)	35.0 1	<0.01							2.47 (0.62)	5.29 (1.30)
7	70 (46-77)	13	77 (73-81)	28.4 1	<0.05			-1.03 (0.26)	0.84 (0.28)	1.08 (0.39)	-1.56 (0.50)	-1.09 (0.46)	-3.14 (0.82)
8	83 (76-89)	14	58 (54-63)	29.6 3	<0.05						2.29 (0.46)		
9	4 (1-10)	13	74 (63-81)	26.9 9	<0.05			-0.70 (0.21)	0.63 (0.27)	0.72 (0.34)			-2.98 (0.64)
12	11 (8-19)	12	86 (77-93)	32.1 0	<0.01			1.01 (0.20)		-1.38 (0.27)	0.73 (0.34)		2.00 (0.52)
14	89 (80-97)	15	100 (96-101)	28.3 0	<0.05					0.79 (0.34)	-1.14 (0.40)	-1.20 (0.41)	-2.62 (0.69)

SSC₁ and Position₁: Chromosome and position, in centimorgans (cM), of the first QTL location. SSC₂ and Position₂: Chromosome and position, of the second QTL location. CI: Confidence interval interval. LR, Likelihood ratio of contrast of the models with and without epistasis. a₁: additive effect of the first location. a₂: additive effect of the second location. d₁: dominance effect of the first location. d₂: dominance effect of the second location. a × a: additive by additive effect. a × d: additive by dominance effect. d × a: dominance by additive effect. d × d: dominance by dominance effect. SE: standard error. Only significant values of a, d, and their interactions are shown.

According to Carlborg and Haley [18], the 'coadaptive' type of interaction occurs when positive $a \times a$ interaction effect is significant. This form of epistasis leads to enhanced performance of parental double homozygotes ($I_1I_1-I_2I_2$ and $M_1M_1-M_2M_2$) in comparison to the hybrid double homozygotes ($I_1I_1-M_2M_2$ or $M_1M_1-I_2I_2$). As an example, we found this specific pattern of epistasis in the NBA epistatic QTL pair *SSC10-SSC15* (Figure 2c).

Additionally, we found another epistatic pattern where only significant $a \times d$ and/or $d \times a$ effects were present. These pairs of interacting QTL were included in a category that we named 'additive-by-dominance' epistasis because $a \times d$ and $d \times a$ interactions showed exactly the same pattern. In positive 'additive-by-dominance' interactions, one locus is overdominant, neutral, or underdominant, depending on the genotype at the second locus. Conversely, the second locus is additive, with the favoured allele being dependent on the genotype at the first locus. In negative 'additive-by-dominance' interactions, the genotypic values of homozygotes at one locus ($_{-}I_2I_2$ and $_{-}M_2M_2$) deviate from what is expectable under an additive model only when the second locus is heterozygous ($I_1M_1-I_2I_2$ and $I_1M_1-M_2M_2$, Figure 2d).

Finally, we considered as a separate category those QTL pairs that could not be classified into any of the preceding epistasis models. The main common feature of QTL pairs gathered in this group was that they all had a significant $a \times d$ or $d \times a$ epistatic term together with significant $a \times a$ and/or $d \times d$ terms, leading to 'complex' patterns of interactions (Figure 2e). These complex patterns might be explained by the existence of higher order interactions involving more than two loci or simply because small sample size for certain genotypic classes might lead to inaccurate estimates of the epistatic effects.

Discussion

Identification of genome-wide significant QTL with additive and dominant effects on pig prolificacy

In the single QTL analyses, we found two genome-wide highly significant QTL located on *SSC13* and *SSC17* affecting NBA and TNB. So far, and to the best of our knowledge, only one study has described a genome-wide significant QTL ($P < 0.05$) detected at 88 cM on *SSC15* for NBA [16]. In the current work, the mode of gene action strongly differed amongst QTL. For instance, the additive effect detected for the *SSC13* QTL stemmed from the *Meishan* breed, and determined an increase of 0.71 and 0.61 piglets for NBA and TNB, respectively. This result is in agreement with the phenotypic differences observed between the purebred parental lines. Conversely, beneficial alleles for the QTL found on *SSC17* appeared to derive from the *Iberian* breed, with increases of 0.73 and 0.68 piglets for NBA and TNB, respectively. These cryptic *Iberian* QTL alleles, which increase prolificacy, provide a

compelling example of the complexity of the genetic architecture of these traits. In addition, significant dominance effects were also detected for the two mentioned QTL; however, the direction of the effects was complete dominance for the QTL on *SSC13*, and recessivity for the QTL at *SSC17*.

Our results confirm the existence of several previously reported suggestive QTL for litter size in pigs. De Koning *et al.* [13] described one suggestive QTL for TNB on *SSC17* (43 cM) in an F_2 cross between *Meishan* and commercial *Dutch* lines. Bidanel *et al.* [24] reported a QTL for ovulation rate on *SSC13* with a similar location (46 cM) and effect (favourable dominant effect of the *Meishan* allele of 0.7 ova shed). The experiment of Bidanel *et al.* [24] involved an F_2 cross between the same *Meishan* population employed in our study and a *Large White* population. Moreover, Cassady *et al.* [12] described a QTL for number of stillborn piglets on *SSC13* (101 cM), although its location is relatively distant to the one reported by us (50-55 cM). Other QTL for litter traits have been described on *SSC5*, *SSC6*, *SSC7*, *SSC8*, *SSC11*, *SSC14*, *SSC16* and *SSC18* [12-15,25]. However, and as mentioned above, the majority of QTL reported in previous studies none reached the genome-wide significant threshold while two QTL identified in our study did. The most likely explanation for this discrepancy relies on the fact that most of previous experiments involved crosses between the *Meishan* breed and other standard European pig populations, such as *Large White* pigs, which have been shown to differ in only three to five piglets born [26]. Moreover, standard European breeds were strongly introgressed with Chinese breeds in the 18-19th centuries and, in consequence, they might not completely fulfil the assumptions and requirements of the F_2 intercross design. Conversely, the *Meishan* and *Iberian* breeds are highly divergent both at the phenotypic (about 7 piglets per parity) and genetic levels. In this way, phylogenetic studies carried out with mitochondrial DNA have revealed that the *Iberian* breed has never been introgressed with *Asian* alleles [21]. Finally, the number of available reproductive records was much larger in our experiment (881 experimental data) than in previous studies (between 200 and 400 experimental data) [12-15,25].

Phenotypic variation of prolificacy traits is affected by a complex network of epistatic QTL

The statistical evidence suggesting that epistasis might be an important component of reproductive traits in mice [3] led us to perform a bi-dimensional genome scan for NBA and TNB. This analysis allowed us to demonstrate that phenotypic variation of these traits can be strongly influenced by a complex network of interacting loci. In this sense, this is the first study that shows genome-wide significant epistatic QTL affecting prolificacy in pigs. After implementing the highly stringent Bonferroni correction

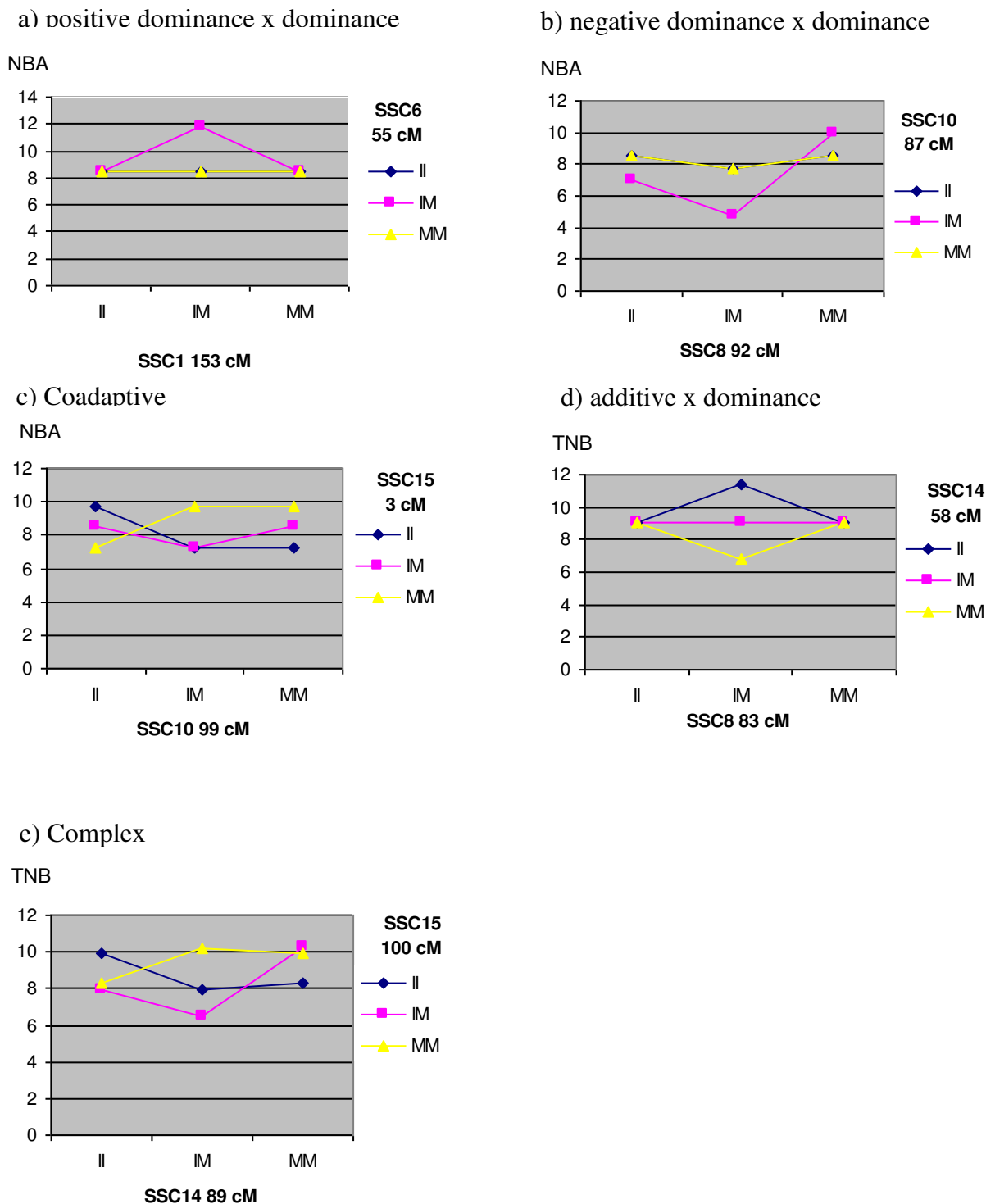


Figure 2
Genotypic values expected for each epistatic pattern detected in the experimental F_2 Iberian \times Meishan intercross. SSC: *Sus Scrofa* Chromosome. Genotypes are shown as II (Iberian/Iberian homozygote), IM (Iberian/Meishan heterozygote), MM (Meishan/Meishan homozygote).

for multiple testing, as much as seven QTL interactions remained significant at the 1% bi-dimensional genome-wide level, whereas 11 were significant at the 5% genome-wide level. Rather than identifying one or a few master regions interacting with multiple loci (which would have yielded a star-like geometry of interactions), we found that most chromosomal regions interacted with a single counterpart. However, almost all chromosomes in which significant epistatic QTL were found participated in more than one interaction. Five of the significant epistatic interactions detected had pleiotropic effects on both TNB and NBA traits, whereas five were only related to TNB and three to NBA. These surprising differences for two highly genetically correlated traits [27], might be interpreted in the light of the statistical values of the Likelihood ratio obtained in the contrast between models and the stringent bi-dimensional genome-wide threshold assumed. For instance, the chromosome pair *SSC10-SSC15* reached an LR value of 29.41 ($p < 0.05$) for NBA and an LR value of 22.33 ("no significant") for TNB. Alternatively, there might be a biological meaning behind the specific differences observed in the geometry of the NBA and TNB networks, thus indicating that although similar metabolic and physiological pathways may be implicated in the regulation of both traits, other mechanisms may be operating independently.

Epistatic QTL for pig prolificacy display different types of interactions

This genetic dissection of the epistatic component of prolificacy in pigs was completed with an analysis of the types of interactions detected in the bi-dimensional genome-wide scan. All the epistatic QTL had at least one significant type of interaction (see tables 4 and 5). In total, nine pairs showed additive by additive ($a \times a$) epistasis, which in certain circumstances can have a 'nullification effect' because epistasis might cancel out the effects of individual loci at intermediate frequencies, making difficult to detect them in a conventional one-dimensional genome scan [28]. Furthermore, seven pairs showed additive by dominance ($a \times d$) epistasis, eleven pairs showed dominance by additive ($d \times a$) epistasis, and sixteen pairs showed dominance by dominance ($d \times d$) epistasis. All these forms of epistasis contribute to heterosis [29]. It has been widely supported that heterosis plays an important role in the genetic architecture of reproductive traits [11,12].

Several patterns of interactions among genotypes were identified and classified according to Carlborg and Haley [18] and Carlborg *et al.* [4]. Eight pairs were classified as 'dominance-by-dominance' and two pairs as 'coadaptive' epistasis. The remaining QTL showed different patterns of epistasis from those previously described in the literature and were, therefore, grouped into two additional categories that we named 'additive-by-dominance' and 'com-

plex' epistasis. 'dominance-by-dominance' epistasis leads to a deviated performance for the double heterozygotes compared to single heterozygotes. Among the $d \times d$ interactions found in our study, six had positive sign (Figure 2a) and two had negative sign (Figure 2b). In positive $d \times d$ interactions, the genotypic value of the double homozygotes is superior to the simple heterozygotes. Conversely, this pattern is reversed when the sign is negative. Coadaptive epistasis occurs when double homozygotes from the same parental line show enhanced performance [18]. As mentioned above, we only found two QTL pairs which displayed this form of epistasis (Figure 2c). Coadaptive epistasis is fundamental to interpret post-zygotic reproductive isolation [30-32]. In each parental population, selection may have acted leading to fixation of different alleles at the relevant loci regulating prolificacy in a way that statistical epistasis is not apparent in either population. Second-generation hybrids (F_2) exhibit combination of alleles at different loci that were not present in any of the parental breeds, leading to the disruption of "co-adapted" gene pools and the appearance of new phenotypes.

The third category included two pairs where only $a \times d$ and $d \times a$ effects were significant. We called this group 'additive-by-dominance' because the $a \times d$ and $d \times a$ interactions show the same patterns but with the roles of the loci reversed (Figure 2d). Finally, we found QTL pairs which show 'complex' patterns of interactions characterised by having a significant $a \times d$ or $d \times a$ term together with significant $a \times a$ and/or $d \times d$ (Figure 2e). These interactions yielded complex patterns in which the genotypic value for a given genotype at one locus drastically changes depending on the genotype at the second locus.

Conclusions

In summary, the bi-dimensional genome scan of an *Iberian* \times *Meishan* F_2 intercross has allowed to demonstrate that the genetic architecture of pig reproduction is mostly built as a complex network of interacting genes rather than being explained by the sum of the additive effects of a yet to be defined number of loci. Individual epistatic loci have moderate effects on the phenotypic variance of prolificacy and they are distributed in multiple chromosomal locations. Moreover, they display several types of interactions that sometimes cannot be easily ascribed to well defined models, thus suggesting the existence of additional interacting loci. In the next years, the fine mapping and identification of the causal mutations that explain the segregation of epistatic QTL in pigs will be a daunting but fascinating task that will likely unveil many of the secrets that underlie the biological grounds of complex traits.

Methods

Experimental design and phenotypic data

A three-generation F_2 intercross between *Iberian* and *Meishan* pig breeds was generated to map prolificacy QTL. Eighteen *Meishan* sows were randomly mated by artificial insemination with three *Iberian* boars (*Guadyrvas* line) to produce the F_1 progeny in the INRA GEPA experimental unit (Surgères, France). This F_1 offspring was purchased and transferred to NOVA GENÈTICA S. A. experimental farm (Lleida, Spain) after weaning at 22-25 days of age. At sexual maturity, eight F_1 boars and 97 F_1 sows were randomly selected to obtain an F_2 progeny. The F_1 sows produced only one litter and were slaughtered after weaning. In total, 255 F_2 reproductive sows were randomly selected and mated to unrelated boars. They produced a total of 881 litters, i.e. 3.45 parities per F_2 sow on average. The number of piglets born alive (NBA) and the total number of piglets born (TNB) were recorded at farrowing. Animals were managed under standard intensive conditions; in all cases, reproduction was carried out by artificial insemination. Protocols were approved by the Ethical and Animal Care Committee at IRTA.

Microsatellite and single nucleotide polymorphism genotyping

DNA was extracted from either frozen blood or tail tissue using commercial protocols (Gentra Systems, Minneapolis). Purebred grandparents, F_1 breeding pigs and the 255 F_2 sows were genotyped for 115 markers: 109 microsatellites and 6 single nucleotide polymorphisms (SNP). Microsatellite loci were chosen based on their ease of scoring, the absence of null alleles, their genomic location and their informativeness. Microsatellite PCR products were analyzed with the Genescan 3.7 software (Applied Biosystems, Warrington, UK) in an ABI PRISM 3100 Genetic Analyzer (Applied Biosystems). Single nucleotide polymorphisms markers in DBH, BMPR1 β , PRLR and VCAM1 genes were analyzed with the SNaPSHOT ddNTP primer extension multiplex kit (Applied Biosystems, Warrington, UK) [33-36]. Moreover, two polymerase chain reaction restriction fragment length polymorphism (PCR-RFLP) markers were analysed: the MC1R gene G/A283 SNP was genotyped by PCR-RFLP with NspI [37]. The PvuII estrogen receptor 1 polymorphism was genotyped following Short et al. [38]. Linkage analysis was carried out by using the 'build' option of the CRI-MAP 2.4 program [39].

Statistical analysis

NBA was considered to be the same trait across all parities and the same criterion was applied to TNB. Two statistical models were used to analyze the experimental data. The first model was a one-dimensional QTL mapping performed using a regression approach [40], based on the following mixed model:

$$y_{ijkl} = H_i + O_j + u_k + p_k + c_a a + c_d d + e_{ijkl} \quad (1)$$

where y_{ijk} was the ijk^{th} observation for NBA or TNB, H_i was the i^{th} year-season fixed effect, O_j was the j^{th} order of parity fixed effect, u_k was the random polygenic effect of the k^{th} individual, p_k was the random permanent environmental effects for the k^{th} individual, a was the QTL additive effect, d was the dominance QTL effect and e_{ijkl} was the random residual term; $c_a = pr(QQ) - pr(qq)$ and $c_d = 0.5pr(Qq) - 0.5(pr(QQ) + pr(qq))$, where $pr(QQ)$ was the probability of being homozygous of *Iberian* origin, $pr(qq)$ was the probability of being homozygous of *Meishan* origin and $pr(Qq)$ was the probability of being heterozygous. For computational reasons, heritability (h^2) and percentage of permanent environmental effect (p^2) were assumed to be known. They were obtained from the posterior mode of a previous Bayesian analysis. Estimates for h^2 and p^2 were 0.22 and 0.05, respectively. The analyses were performed at every centimorgan along the 2,017 cM of the 18 autosomes, by means of a likelihood ratio test (LR) comparing the models with and without the QTL effects. Nominal P -values were calculated assuming a chi-squared distribution of the LR test. Yet, nominal significance levels cannot be used directly due to the large number of tests performed. Hence, genome-wide significance levels were calculated using a Bonferroni correction and assuming independence between statistical tests every 30 cM. The genome-wide critical values of LR test for level of significance associated with type I errors $\alpha = 0.10, 0.05, 0.01$ and 0.001 were 13.36, 15.13, 18.27 and 23.22, respectively.

With regard to the two-QTL analyses, two different models were employed. The first model included the effects of two non interacting QTL. The statistical mixed model was:

$$y_{ijkl} = H_i + O_j + u_k + p_k + c_{a1} a_1 + c_{d1} d_1 + c_{a2} a_2 + c_{d2} d_2 + e_{ijkl} \quad (2)$$

where a_1 and a_2 were the additive effects, d_1 and d_2 were the dominance effects for QTL 1 and 2, respectively. The coefficients c_{a1} , c_{d1} , c_{a2} and c_{d2} were calculated as before for locations 1 and 2.

The second model allowed for epistasis, i.e.:

$$y_{ijkl} = H_i + O_j + u_k + p_k + c_{a1} a_1 + c_{d1} d_1 + c_{a2} a_2 + c_{d2} d_2 + c_{axa} I_{axa} + c_{axd} I_{axd} + c_{dxa} I_{dxa} + c_{dxd} I_{dxd} + e_{ijkl} \quad (3)$$

where $I_{a \times a}$, $I_{a \times d}$, $I_{d \times a}$ and $I_{d \times d}$ were the additive \times additive, additive \times dominance, dominance \times additive and dominance \times dominance epistatic interaction effects, respectively; $c_a \times a$, $c_a \times d$, $c_d \times a$ and $c_d \times d$ were the regression

coefficients calculated following Cockerham's model for epistatic interactions [41,42], i.e.:

$$c_{axa} = pr_1(QQ)pr_2(QQ) - pr_1(QQ)pr_2(qq) - pr_1(qq)pr_2(QQ) + pr_1(qq)pr_2(qq)$$

$$c_{axd} = -0.5pr_1(QQ)pr_2(QQ) + 0.5pr_1(QQ)pr_2(Qq) - 0.5pr_1(QQ)pr_2(qq) + 0.5pr_1(qq)pr_2(QQ) - 0.5pr_1(qq)pr_2(Qq) + 0.5pr_1(qq)pr_2(qq)$$

$$c_{dxa} = -0.5pr_1(QQ)pr_2(QQ) + 0.5pr_1(QQ)pr_2(qq) + 0.5pr_1(Qq)pr_2(QQ) - 0.5pr_1(Qq)pr_2(qq) - 0.5pr_1(qq)pr_2(QQ) + 0.5pr_1(qq)pr_2(qq)$$

$$c_{dxd} = 0.25pr_1(QQ)pr_2(QQ) - 0.25pr_1(QQ)pr_2(Qq) + 0.25pr_1(QQ)pr_2(qq) - 0.25pr_1(Qq)pr_2(QQ) + 0.25pr_1(Qq)pr_2(Qq) - 0.25pr_1(Qq)pr_2(qq) + 0.25pr_1(qq)pr_2(QQ) - 0.25pr_1(qq)pr_2(Qq) + 0.25pr_1(qq)pr_2(qq)$$

The two-QTL analyses were performed using a full bi-dimensional genome scan. LR-tests comparing the models with and without the epistatic interaction effects (model 3 vs model 2) were computed at 1 cM intervals along the 2,017 cM of the 18 autosomes for each of the two QTL, leading to a total of 2,069,595 regression analyses for both NBA and TNB. The values of h^2 and p^2 used in this analysis were identical to those considered in model 1. The statistical contrast between models for evidence of epistasis was carried out using an LR test with 4 degrees of freedom in the numerator. As before, bi-dimensional genome-wide levels of significance were calculated using a Bonferroni correction assuming statistical independence every 30 cM. The genome-wide critical values of LR test for level of significance associated with type I errors $\alpha = 0.10, 0.05, 0.01$ and 0.001 were 25.14, 26.68, 30.17 and 35.06 respectively. Confidence intervals for QTL location were calculated using the Likelihood drop method [43]. Finally, we calculated the expected values of the nine genotypic classes using the Cockerham's F_2 -metric model [42]. In addition, statistical significance was independently assessed by using an approach based on the False Discovery Rate -FDR- [44], that was calculated based on nominal P -values every 30 cM, as well as by employing a parametric bootstrap method [45].

Authors' contributions

JLN conceived and led the project, supervised its execution, participated in the design of the study, drafted and finalized the manuscript. CR participated in the design and coordination of the study, obtained and provided Iberian semen, performs linkage analysis, and helped to revise the manuscript. LV participated in the design of the study, developed the analysis programs, performed the statistical analysis and helped to revise the manuscript. AT has carried out part of the molecular genotyping tasks and has been involved in drafting and revising critically the manuscript. GM performed part of the molecular genotyping tasks. OR performed part of the molecular genotyping tasks. CB has performed part of the microsatellite genotyping. MA (IRTA) participated in the experimental

protocol and data collection. JPB has provided Meishan sows (INRA) to obtain F1 animals, and participated in the discussion of the results and helped to revised the manuscript. MA (UAB) has been involved in drafting the manuscript and revising it critically. CO, was responsible of DNA extraction and the selection of markers to genotype and helped to perform linkage analysis. AS participated in the design and coordination of the study and helped to draft the manuscript.

All authors read and approved the final manuscript.

Acknowledgements

Financial support was provided by the Spanish *Ministerio de Educación y Ciencia* (Grant AGL2000-1229-C03). Our sincere acknowledgment to Miguel Angel Toro (INIA) for valuable discussions and useful comments. The authors are indebted to the staff of *Nova Genética*, in particular to E. Ramells, F. Marquez, R. Malé, F. Rovira, for cooperating in the experimental protocol, and I. Riart (IRTA) and J. C. Caritez (INRA) for their technical support. The authors gratefully acknowledge the contributions of the INRA (France) and the CIA *El Dehesón del Encinar* (Spain) for providing the purebred Meishan sows and Iberian boars, respectively.

References

- Brockmann GA, Kratzsch J, Haley CS, Renne U, Schwerin M, Karle S: **Single QTL effects, epistasis, and pleiotropy account for two-thirds of the phenotypic F-2 variance of growth and obesity in DU6i × DBA/2 mice.** *Genome Research* 2000, **10**:1941-1957.
- Cheverud JM, Vaughn TT, Susan L Pletscher, Peripato AC, Adams ES, Erikson CF, King-Ellison KJ: **Genetic architecture of adiposity in the cross of LG/J and SM/J inbred mice.** *Mammalian Genome* 2001, **12**:3-12.
- Peripato AC, de Brito RA, Matioli SR, Pletscher LS, Vaughn T, Cheverud JM: **Epistasis affecting litter size in mice.** *Journal of Evolutionary Biology* 2004, **3**:593-602.
- Carlborg O, Brockmann A, Haley CS: **Simultaneous mapping of epistatic QTL in DU6i × DBA/2 mice.** *Mammalian Genome* 2005, **16**:481-494.
- Carlborg O, Kerje S, Schütz K, Jacobsson L, Jensen P, Andersson L: **A global search reveals epistatic interaction between QTL for early growth in the chicken.** *Genome Research* 2003, **13**:413-421.
- Carlborg O, Burt D, Hocking P, Haley CS: **Simultaneous mapping of epistatic QTL in chickens reveals clusters of QTL pairs with similar genetic effects on growth.** *Genetical Research* 2004, **83**:197-209.
- Segre D, DeLuna A, Church GM, Kishony R: **Modular epistasis in yeast metabolism.** *Nature Genetics* 2005, **37**(1):77-83.
- Fedorowicz GM, Fry DJ, Anholt RR, Mackay TF: **Epistatic interactions between smell-impaired loci in Drosophila melanogaster.** *Genetics* 1998, **148**:1885-1891.
- Montooth KL, Marden JH, Clark AG: **Mapping determinants of variation in energy metabolism, respiration and flight in Drosophila.** *Genetics* 2003, **165**(2):623-635.
- Andersson L, Georges M: **Domestic-animal genomics: deciphering the genetics of complex traits.** *Nature Review Genetics* 2004, **5**:202-212.
- Rothschild MF, Bidanel JP: **Biology and genetics of reproduction.** In *The Genetics of the Pig* Edited by: Rothschild MF, Ruvinsky A. Cambridge, UK: CAB International, University Press; 1998:313-343.
- Cassady JP, Johnson RK, Pomp D, Rohrer GA, Van Vleck LD, Spiegel EK, Gilson KM: **Identification of quantitative trait loci affecting reproduction in pigs.** *Journal of Animal Science* 2001, **79**:623-633.
- De Koning DJ, Ratting AP, Harlizius B, Groenen MAM, Brascamp EV, van Arendonk JAM: **Detection and characterization of quantitative trait loci for growth and reproduction traits in pigs.** *Livestock Production Science* 2001, **72**:185-198.
- King AH, Jiang ZH, Gibson JP, Haley CS, Archibald AL: **Mapping quantitative trait loci affecting female reproductive traits on**

- porcine chromosome 8. *Biology of Reproduction* 2003, **68(6)**:2172-2179.
15. Tributou T, Iannuccelli T, Druet H, Gilbert J, Riquet R, Gueblez R, Mercat MJ, Bidanel JP, Milan D, le Roy P: **Detection of quantitative trait loci for reproduction and production traits in Large White and French Landrace pig populations.** *Genetics, Selection, Evolution* 2008, **40(1)**:61-78.
 16. Li K, Ren J, Xing Y, Zhang Z, Ma J, Guo Y, Huang L: **Quantitative trait loci for litter size and prenatal loss in a White Duroc × Chinese Erhualian resource population.** *Animal Genetics* 2009, **40**:963-966.
 17. Spötter A, Distl O: **Genetic approaches to the improvement of fertility traits in the pig.** *Veterinary Journal* 2006, **172(2)**:234-247.
 18. Carlborg O, Haley CS: **Epistasis: too often neglected in complex trait studies?** *Nature Reviews* 2004, **5**:619-625.
 19. Bidanel JP, Caritez JC, Legault C: **Estimation of crossbreeding parameters between Large White and Meishan porcine breeds. I. Reproductive performance.** *Genetics, Selection, Evolution* 1989, **21**:507-526.
 20. Silió L, Rodríguez C, Rodríguez J, Toro MA: **La selección de cerdos ibéricos.** In *Porcino Ibérico: Aspectos claves* Edited by: Buxadé C, Daza A. Madrid: Mundiprensa; 2001:125-149.
 21. Alves E, Ovilo C, Rodríguez MC, Silió L: **Mitochondrial DNA sequence variation and phylogenetic relationships among Iberian pigs and other domestic and wild pig populations.** *Animal Genetics* 2003, **34(5)**:319-324.
 22. Fernández A, Toro MA, Rodríguez C, Silió L: **Heterosis and epistasis for teat number and fluctuating asymmetry in crosses between Jiaying and Iberian pigs.** *Heredity* 2004, **93(2)**:222-227.
 23. Beavis WD: **The power and deceit of QTL experiments: lessons from comparative QTL studies.** In *Proceedings of the Forty-Ninth Annual Corn & Sorghum Industry Research Conference: 7-8 December 1994; Chicago* Edited by: Wilkinson DB. American Seed Trade Association, Washington DC; 1994:250-266.
 24. Bidanel JP, Rosendo A, Iannuccelli N, Gilbert H, Caritez JC, Billon Y, Prunier A, Milan D: **Detection of quantitative trait loci for teat number and female reproductive traits in Meishan × Large White F2 pigs.** *Animal* 2008, **2**:813-820.
 25. Holl JW, Cassady JP, Pomp D, Johnson RK: **A genome scan for quantitative trait loci and imprinted regions affecting reproduction in pigs.** *Journal of Animal Science* 2004, **82**:3421-3429.
 26. Haley CS, Lee GJ, Ritchie M: **Comparative reproductive-performance in Meishan and Large White pigs and their crosses.** *Animal Science* 1995, **60(2)**:259-267.
 27. Canario L, Roy N, Gruand J, Bidanel JP: **Genetic variation of farrowing kinetics traits and relationships with litter size and perinatal mortality in French Large White sows.** *Journal of Animal Science* 2006, **84**:1053-1058.
 28. Routman E, Cheverud JM: **Gene effects on a quantitative trait: two-locus epistatic effects measured at microsatellite markers and at estimated QTL.** *Evolution* 1997, **51(5)**:1654-1662.
 29. Hua JP, Xing YZ, Wu WR, Xu CG, Sun XL, Yu SB, Zhang QF: **Single-locus heterotic effects and dominance by dominance interactions can adequately explain the genetic basis of heterosis in an elite rice hybrid.** *PNAS* 2003, **100(5)**:2574-2579.
 30. Dobzhansky T: **Genetics of the evolutionary process.** New York: Columbia University Press; 1937.
 31. Muller HJ: **Bearing of the *Drosophila* work on systematics.** In *The new systematics* Edited by: Huxley J. Oxford: Clarendon; 1940:185-268.
 32. Muller HJ: **Isolating mechanisms, evolution and temperature.** *Biological Symposium* 1942, **6**:71-125.
 33. Tomàs A, Casellas J, Ramirez O, Pérez-Enciso M, Rodríguez C, Noguera JL, Sánchez A: **Polymorphisms of the porcine dopamine beta-hydroxylase gene and their relation to reproduction and piglet survivability in an Iberian × Meishan F2 intercross.** *Animal Genetics* 2006, **37(3)**:279-282.
 34. Ramirez O, Tomàs A, Casellas J, Blanch M, Noguera JL, Amills M: **An Association Analysis Between a Silent C558T Polymorphism at the Pig Vascular Cell Adhesion Molecule I Locus and Sow Reproduction and Piglet Survivability Traits.** *Reproduction Domestic Animals* 2008, **43(5)**:542-546.
 35. Tomàs A, Frigo E, Casellas J, Ramirez O, Ovilo C, Noguera JL, Sánchez A: **An association study between polymorphisms of the porcine bone morphogenetic protein receptor type I beta (BMPRI β) and reproductive performance of Iberian × Meishan F2 sows.** *Animal Genetics* 2006, **37(3)**:297-298.
 36. Tomàs A, Casellas J, Ramirez O, Muñoz G, Noguera JL, Sánchez A: **High amino acid variation in the intracellular domain of the pig prolactin receptor (PRLR) and its relation to ovulation rate and piglet survival traits.** *Journal of Animal Science* 2006, **84(8)**:1991-1998.
 37. Fernández A, Fabuel E, Alves E, Rodríguez C, Silió L, Ovilo C: **DNA test based on coat colour genes for authentication of the raw material of meat products from Iberian pigs.** *Journal of the Science of Food and Agriculture* 2004, **84(14)**:1855-1860.
 38. Short TH, Rothschild MF, Southwood OI, McLaren DG, de Vries A, Steen H van der, Eckardt GR, Tuggle CK, Helm J, Vaske DA, Milehan AJ, Plastow GS: **Effect of the estrogen receptor locus on reproduction and production traits in four commercial pig lines.** *Journal of Animal Science* 1997, **75(12)**:3138-3142.
 39. Green P, Falls K, Crooks S: **Documentation of CRI-MAP.** [<http://linkage.rockefeller.edu/soft/crimap/>].
 40. Haley CS, Knott SA, Elsen JM: **Mapping quantitative trait loci in crosses between outbred lines using least squares.** *Genetics* 1994, **136**:1195-1207.
 41. Cockerham CC: **An extension of the concept of partitioning hereditary variance for analysis of covariances among relatives when epistasis is present.** *Genetics* 1954, **39**:859-882.
 42. Kao C-H, Zeng Z-B: **Modeling epistasis of quantitative trait loci using Cockerham's model.** *Genetics* 2002, **160**:1243-1261.
 43. Lander ES, Botstein D: **Mapping mendelian factors underlying quantitative traits using RFLP linkage maps.** *Genetics* 1989, **121**:185-199.
 44. Benjamini Y, Hochberg Y: **Controlling the False discovery rate - a practical and powerful approach to multiple testing.** *Journal of the Royal Statistical Society B* 1995, **57**:289-300.
 45. Efron B, Tibshirani R: *An Introduction to the Bootstrap* New York: Chapman & Hall; 1993.

Publish with **BioMed Central** and every scientist can read your work free of charge

"BioMed Central will be the most significant development for disseminating the results of biomedical research in our lifetime."

Sir Paul Nurse, Cancer Research UK

Your research papers will be:

- available free of charge to the entire biomedical community
- peer reviewed and published immediately upon acceptance
- cited in PubMed and archived on PubMed Central
- yours — you keep the copyright

Submit your manuscript here:
http://www.biomedcentral.com/info/publishing_adv.asp

