



**HAL**  
open science

## Phenotypic and fine genetic characterization of the D locus controlling fruit acidity in peach

Karima Boudehri, Abdelhafid A. Bendahmane, Gaëlle Cardinet, Christelle Troadec, Annick Moing, Elisabeth Dirlwanger

► **To cite this version:**

Karima Boudehri, Abdelhafid A. Bendahmane, Gaëlle Cardinet, Christelle Troadec, Annick Moing, et al.. Phenotypic and fine genetic characterization of the D locus controlling fruit acidity in peach. *BMC Plant Biology*, 2009, 9 (59), 14 p. 10.1186/1471-2229-9-59 . hal-02665198

**HAL Id: hal-02665198**

**<https://hal.inrae.fr/hal-02665198v1>**

Submitted on 31 May 2020

**HAL** is a multi-disciplinary open access archive for the deposit and dissemination of scientific research documents, whether they are published or not. The documents may come from teaching and research institutions in France or abroad, or from public or private research centers.

L'archive ouverte pluridisciplinaire **HAL**, est destinée au dépôt et à la diffusion de documents scientifiques de niveau recherche, publiés ou non, émanant des établissements d'enseignement et de recherche français ou étrangers, des laboratoires publics ou privés.

Research article

Open Access

## Phenotypic and fine genetic characterization of the *D* locus controlling fruit acidity in peach

Karima Boudehri<sup>1</sup>, Abdelhafid Bendahmane<sup>2</sup>, Gaëlle Cardinet<sup>1</sup>,  
Christelle Troadec<sup>2</sup>, Annick Moing<sup>3,4</sup> and Elisabeth Dirlewanger\*<sup>1</sup>

Address: <sup>1</sup>INRA, UR0419, Unité de Recherches sur les Espèces Fruitières, Centre de Bordeaux, BP 81, F-33140 Villenave d'Ornon, France, <sup>2</sup>INRA-CNRS, UMR1165 Unité de Recherche en Génétique Végétale (URGV), 2 rue Gaston Crémieux, F-91057 Evry, France, <sup>3</sup>INRA – UMR619 Fruit Biology, INRA, Université de Bordeaux 1, Université de Bordeaux 2, BP 81, F-33140 Villenave d'Ornon, France and <sup>4</sup>Metabolome-Fluxome Pole, IFR103 BVI, BP 81, F-33140 Villenave d'Ornon, France

Email: Karima Boudehri - kboudehr@bordeaux.inra.fr; Abdelhafid Bendahmane - bendahm@evry.inra.fr;  
Gaëlle Cardinet - gaelle.cardinet@bordeaux.inra.fr; Christelle Troadec - troadec@evry.inra.fr; Annick Moing - moing@bordeaux.inra.fr;  
Elisabeth Dirlewanger\* - dirlewan@bordeaux.inra.fr

\* Corresponding author

Published: 15 May 2009

Received: 17 November 2008

BMC Plant Biology 2009, 9:59 doi:10.1186/1471-2229-9-59

Accepted: 15 May 2009

This article is available from: <http://www.biomedcentral.com/1471-2229/9/59>

© 2009 Boudehri et al; licensee BioMed Central Ltd.

This is an Open Access article distributed under the terms of the Creative Commons Attribution License (<http://creativecommons.org/licenses/by/2.0>), which permits unrestricted use, distribution, and reproduction in any medium, provided the original work is properly cited.

### Abstract

**Background:** Acidity is an essential component of the organoleptic quality of fleshy fruits. However, in these fruits, the physiological and molecular mechanisms that control fruit acidity remain unclear. In peach the *D* locus controls fruit acidity; low-acidity is determined by the dominant allele. Using a peach progeny of 208 F<sub>2</sub> trees, the *D* locus was mapped to the proximal end of linkage group 5 and co-localized with major QTLs involved in the control of fruit pH, titratable acidity and organic acid concentration and small QTLs for sugar concentration. To investigate the molecular basis of fruit acidity in peach we initiated the map-based cloning of the *D* locus.

**Results:** In order to generate a high-resolution linkage map in the vicinity of the *D* locus, 1,024 AFLP primer combinations were screened using DNA of bulked acid and low-acid segregants. We also screened a segregating population of 1,718 individuals for chromosomal recombination events linked to the *D* locus and identified 308 individuals with recombination events close to *D*. Using these recombinant individuals we delimited the *D* locus to a genetic interval of 0.4 cM. We also constructed a peach BAC library of 52,000 clones with a mean insert size of 90 kb. The screening of the BAC library with markers tightly linked to *D* locus indicated that 1 cM corresponds to 250 kb at the vicinity of the *D* locus.

**Conclusion:** In the present work we presented the first high-resolution genetic map of *D* locus in peach. We also constructed a peach BAC library of approximately 15× genome equivalent. This fine genetic and physical characterization of the *D* locus is the first step towards the isolation of the gene(s) underlying fruit acidity in peach.

## Background

Peach [*Prunus persica* (L.) Batsch] belongs to the *Spiraeoideae* subfamily of the *Rosaceae* [1]. The *Prunus* genus is characterized by species producing drupes as fruit, and contains a significant number of economically important fruit tree species such as almond (*Prunus dulcis* (Mill.)), apricot (*Prunus armeniaca* L.), sweet cherry (*Prunus avium* L.), sour cherry (*Prunus cerasus* L.) and plum (*Prunus domestica* L.).

Compared to other tree species, peach has a relative small diploid genome (290 Mb) [2], and a short juvenile phase (two to three years). Therefore, peach is considered as a model species for *Rosaceae* family and a physical map of its genome has been initiated [3].

Among fruit producing rosaceous crops, peach is the second most important fruit crop in Europe after apple and the third worldwide (FAOSTAT: <http://faostat.fao.org/>). However, the consumption of peaches and nectarines is stagnant due to the low quality of fruits that are harvested at an immature stage for storage and shipment reasons [4]. One of the major objectives for peach breeders is to find the right compromise between quality and immaturity at harvest [5]. The variation in fruit quality at harvest involves a large number of interrelated factors [6] among which organic acid and soluble sugar contents and composition are major determinants [7]. In ripe peach fruit, malic and citric acids are the predominant organic acids, while quinic acid accumulates in lower amounts [8,9]. Moreover, the major soluble sugars are sucrose, fructose, glucose and sorbitol [9,10]. Sucrose is the predominant soluble sugar at maturity while sorbitol accumulates at very low levels.

In peach, the *D* locus (*D* is for 'Doux' meaning 'sweet' in French) was described as dominant and controlling the 'low-acid' character of fruit [11,12]. Based on previous segregation analyses of an F<sub>2</sub> population (JxF) obtained from a cross between 'Ferjalou Jalousia<sup>®</sup>' low-acid variety and 'Fantasia' normally-acid variety, the *D* locus was mapped on linkage group 5 [13]. It is co-localized with major QTLs for pH, titratable acidity (TA), organic acids concentration and with small QTLs for sugars concentration [14]. Low-acid peach fruit is characterized by reduced contents of malic and citric acids [9], which, however, cannot be explained just by the reduced expression or activity of phosphoenolpyruvate carboxylase (PEPC) [15], a key enzyme involved in malate synthesis. 'Ferjalou Jalousia<sup>®</sup>' fruit has half the concentration of malic acid and one-fifth that of citric acid of 'Fantasia' variety [9]. Using the candidate gene approach, 18 genes involved in organic acid synthesis, degradation or vacuolar storage were studied [16,17]. Expression analyses in fruit of six

selected candidate genes did not show a clear difference between the normally-acid and low-acid varieties [17]. The genes showing a modification of their expression in the low-acid fruit compared to the normally-acid fruit were the tonoplast proton pumps *PRUpe;AtpvA1*, *PRUpe;Vp2*, and to a lesser extent *PRUpe;Vp1*. *PRUpe;Vp1* and *PRUpe;Vp2* at citric acid peak and maturity, and *PRUpe;AtpvA1* during cell division showed higher expression in the fruit of the low-acid variety ('Ferjalou Jalousia<sup>®</sup>'). However, none of these candidate genes were located on linkage group 5, excluding their direct role in the control of acid content by the *D* locus [17]. More recently, in the European ISAFRUIT Integrated Project <http://www.isafruit.org/Portal/index.php>, several candidate genes involved in fruit quality were selected and tested on the JxF F<sub>2</sub> mapping population. However, none of them was located in the region of the *D* locus (Dirlewanger E., manuscript in preparation)

Low-acid varieties have already been described in apple [18], tomato [19], grape [20] and several *Citrus* species [21]. In apple, a non-acid mutant from the 'Usterapfel' variety showed a content in malic acid ten times less than the normally-acid one [22].

The high level of malic acid was reported to be controlled by the dominant *Ma* allele [23] suggesting that *Ma* and *D* act at different physiological control points. A cDNA-AFLP analysis, coupled with a bulk segregant analysis (BSA) was recently used to screen genes differently expressed between low- and high-acid apple fruits [24]. The authors reported the isolation of a cDNA whose expression could only be detected in low-acid fruit at an early stage of fruit development. Nevertheless, this cDNA showed no homology with any sequences in public databases. Moreover, the *Ma* and *D* loci are not located on homologous chromosomes: *Ma* is located on linkage group 16 in *Malus* [25], homologous to linkage group 1 in *Prunus* [26] and *D* is located on linkage group 5 in *Prunus* which is homologous to linkage groups 6 and 14 in *Malus* [27]. For *Citrus*, the low level of citric acid is controlled by a recessive gene named *acitric* [28]. Fruit acidity in *Citrus* seems to be linked to the capacity to accumulate citric acid into the vacuole. Low-acid varieties accumulate low amount of citric acid probably because it is exported out from the vacuole [29,30]. Two candidate genes such as acid invertase and cytoplasmic isocitrate dehydrogenase were identified to be differentially expressed between acid and low-acid *Citrus* [30]. Fruit acidity can also be controlled by several chromosome regions as in tomato where several QTLs for titratable acidity and pH were identified [31,32] and several candidate genes were proposed [33]. However, to date the mechanism(s) of the genetic control of fruit acidity remains to be elucidated.

In order to identify genes of interest, candidate gene approach can be used when assumptions can be made regarding the biological function of the gene [34]. This approach was successfully undertaken for several fruit traits including anthocyanin content for which the biosynthesis pathway and regulating genes were well known [35] and cell wall degradation where implicated genes were identified in other species [36]. However, to isolate agronomically important and botanically relevant genes with unknown function and where no clear hypothesis can be made, chromosome landing seems the main strategy by which map-based or positional cloning could be applied [37]. The complexity of organic acids metabolic pathways as well as the difficult understanding of the regulation of their transporters and channels and related proton pumps [38,39] has hampered, so far, the identification of the gene(s) associated to the *D* locus using a candidate gene approach. Thus, in order to understand the molecular and physiological bases of this trait, a positional cloning strategy was initiated and a fine map of the *D* locus has been constructed. To identify the gene(s) underlying acidity control at the *D* locus, the first step was to construct a fine map of the *D* locus. The aims of the present work were: (1) the characterization of the fruit acidity trait, (2) the increase of the number of markers tightly linked to the *D* locus, (3) the conversion of the nearest markers into Sequence Characterized Amplified Region (SCAR) and Cleaved Amplified Polymorphic Sequence (CAPS) markers, (4) the construction of a high-resolution genetic map of this locus and definition of the position of the *D* locus with new recombinant individuals phenotyped, and (5) the evaluation of the genetic distance/physical distance ratio around the *D* locus using a BAC library.

## Results

### Fruit acidity characterization

Among the 208 individuals used for the genetic linkage map, only 151 trees producing fruit were phenotyped for pH and titratable acidity and were classified into three subgroups corresponding to the three genotypes: homozygous for 'Ferjalou Jalousia'® allele (JJ) and for 'Fantasia' allele (FF), and heterozygous (JF) at the targeted locus (Fig. 1). A significant difference (Student's t-test,  $P < 0.01$ ) was observed for pH and TA for the comparisons of JJ and JF genotypes, FF and JF genotypes, and JJ and FF genotypes (pH mean values for JJ = 4.57, JF = 4.36, FF = 3.63; TA mean values JJ = 36.5, JF = 48.2, FF = 109.7 meq/l) suggesting that the *D* allele is partially dominant. Homozygous JJ genotypes showed values higher than 4.12 for pH and lower than 51.9 meq/l for TA. On the opposite, pH and TA values for homozygous FF genotypes were respectively lower than 3.93 and higher than 65.6 meq/l. The pH of heterozygous JF genotypes ranged from

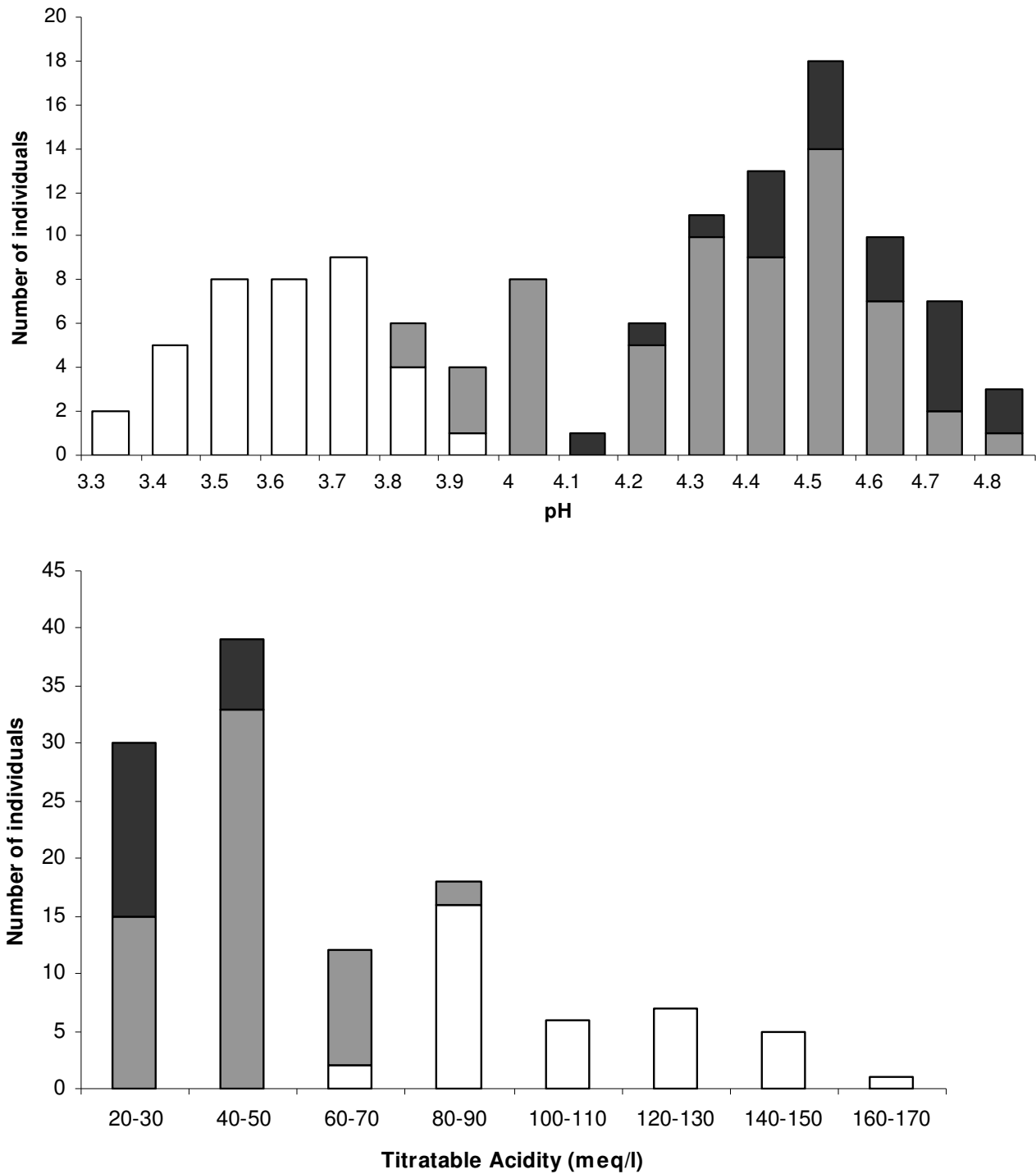
3.80 to 4.87 and TA ranged from 28.1 to 90.0 meq/l. Thus, normally-acid phenotypes that correspond exclusively to genotypes FF showed pH value lower than 3.8 and TA value higher than 100 meq/l while low-acid phenotypes corresponding to genotypes JJ or JF showed pH values higher than 4.0 and TA value lower than 60 meq/l. These results indicate that individuals with intermediate acidity (pH values between 3.8 and 4.0 and TA values between 60 and 100 meq/l) can be either homozygous *dd* or heterozygous *Dd* at the *D* locus and therefore, they cannot be reliably classified into normally-acid or low-acid phenotype.

### Identification and mapping of AFLP markers linked to the *D* locus

Among the 1,024 primer combinations tested, 960 provided readable amplification products. Thirty to 90 bands were observed on AFLP gels per primer combination with a size range from 60 to 1,000 bp, but only 6.5% of the bands were polymorphic between the 'Ferjalou Jalousia'® and 'Fantasia' parents. Markers whose bands were present in  $B_{D1}$  and  $B_{D2}$  bulks and absent from  $B_{d1}$  and  $B_{d2}$  bulks were potentially linked to the *D* locus (Fig. 2). A total of 34 markers were identified as putatively linked to the *D* locus (Table 1). Nineteen primer combinations each revealed only one *D*-linked marker, six primer combinations produced two *D*-linked markers (pGC-AGG, pCA-GCG, pTC-CAC, pCA-ACC, pCA-TCC and pAA-ACA) and one primer combination revealed three *D*-linked markers (pGC-TCT). As expected, all 34 AFLP markers were mapped on linkage group 5. AFLP markers close to the *D* locus (within 22 cM) were clearly polymorphic between bulks. AFLP markers mapped further away (beyond 27 cM) were polymorphic markers between bulks but with a very faint band for "d" bulks. Fourteen AFLP markers were located within the first 10 cM containing the *D* locus.

### Conversion of AFLP markers into SCAR and CAPS markers

Nine AFLP markers linked to the *D* locus were converted into simple codominant PCR-based markers. Four of them were codominant markers and five were dominant markers (Table 1). The codominant AFLP markers (pGC-AGG<sub>430J-450F</sub>, pAC-AAC<sub>402J-412F</sub> and pGG-TAC<sub>215J-221F</sub>) were successfully converted into SCAR markers (D-Scar0, D-Scar1 and D-Scar2) and were confirmed as codominant markers (Table 2, Fig. 3). The codominant AFLP markers pTC-GTA<sub>218F-219J</sub> revealed a deletion of one nucleotide in 'Fantasia' compared to 'Ferjalou Jalousia'®. After sequencing the two alleles, three single nucleotide polymorphisms (SNPs) were detected; one of them was revealed after digestion with the restriction enzyme *AccI* and directly observed on agarose gel. This codominant Cleaved Amplified Polymorphism Sequence (CAPS) marker was named D-Scar3 (Fig. 3).



**Figure 1**  
**Frequency distribution of pH and titratable acidity of fruit juice.** Mean values observed in 2007 are represented. Distribution of F<sub>2</sub> individuals, having sfruit at maturity, used for the genetic linkage map. White, black and grey bars indicate homozygous genotypes for 'Fantasia' allele, 'Ferjalou Jalousia<sup>®</sup>' allele and heterozygous, respectively.

**Table 1: AFLP markers mapped on linkage group 5 (LG5) based on 208 JxF<sub>2</sub> individuals**

AFLP marker <sup>size in bp*</sup>	Position on LG5 (cM from the top)	Selection for conversion into SCAR	SCAR marker
pAC-AAC <sub>402J-412F</sub>	0	Yes	D-Scar1
pGG-TAC <sub>215J-221F</sub>	0	Yes	D-Scar2
pGC-AGG <sub>430J-450F</sub>	0.7	Yes	D-Scar0
pTC-CTG <sub>470J</sub>	0.7	Yes	D-Scar7
pGT-TTG <sub>188J</sub>	0.7	Yes	Monomorphic
pCA-GCG <sub>149F</sub>	0.9	Yes	Monomorphic
pTC-GTA <sub>218F-219J</sub>	1.8	Yes	D-Scar3
pCA-GCG <sub>132J</sub>	3.3	Yes	Monomorphic
pTC-CAC <sub>206J</sub>	4.1	No	
pTG-TGG <sub>470J</sub>	4.9	Yes	D-Scar6
pCA-GTA <sub>390J</sub>	5.6	No	
pCA-ACC <sub>168J</sub>	9.1	No	
pGC-TCT <sub>232F</sub>	9.2	No	
pGG-TGA <sub>380J</sub>	10	No	
pCC-AGT <sub>223J</sub>	11.7	No	
pTA-TCC <sub>470J-475F</sub>	11.7	No	
pCC-GAA <sub>202J</sub>	12	No	
pCT-CAT <sub>203J</sub>	12.2	No	
pAG-GTA <sub>202J</sub>	12.4	No	
pTA-GTG <sub>600J</sub>	15.2	No	
pGC-TCT <sub>380J</sub>	16.2	No	
pGC-TCT <sub>370F</sub>	17.4	No	
pGT-TCT <sub>550J</sub>	21.8	No	
pAT-TTC <sub>360J</sub>	22	No	
pTA-CTC <sub>317J</sub>	22.2	No	
pCA-TCC <sub>400J</sub>	27	No	
pTC-CAC <sub>350F</sub>	30.2	No	
pAA-ACA <sub>253F-255J</sub>	39.8	No	
pCA-GAC <sub>158J</sub>	40.7	No	
pCA-ACC <sub>254J</sub>	46.6	No	
pGC-AGG <sub>500J</sub>	47.8	No	
pCT-ATC <sub>220J</sub>	63.6	No	
pAA-ACA <sub>400J</sub>	68	No	
pCA-TCC <sub>370J</sub>	78.1	No	

\* Allele sizes for both parents are indicated for codominant markers, while only allele size for one parent is indicated for dominant markers. J 'Ferjalou Jalousia<sup>®</sup>', F 'Fantasia'.

For the dominant AFLP markers, primers were designed from the sequences of individuals carrying the *D* allele. They were then tested on 'Ferjalou Jalousia<sup>®</sup>', 'Fantasia' and on the F<sub>1</sub>-JF:21 hybrid used to construct the F<sub>2</sub> mapping progeny. The comparison of the sequences obtained for the pTG-TGG<sub>470J</sub> marker revealed a deletion of six nucleotides in 'Fantasia' as compared to 'Ferjalou Jalousia<sup>®</sup>' sequence. This AFLP marker was then transformed into a codominant SCAR marker (D-Scar6) (Fig. 3). For pTC-CTG<sub>470J</sub>, the sequencing of the two alleles revealed one SNP. The alleles can be discriminated by digesting the PCR products with *Mse*I. This CAPS marker was called D-Scar7 (Fig. 3). For the three dominant AFLP markers pGT-TTG<sub>188J</sub>, pCA-GCG<sub>149F</sub> and pCA-GCG<sub>132J</sub>, no polymorphism was detected.

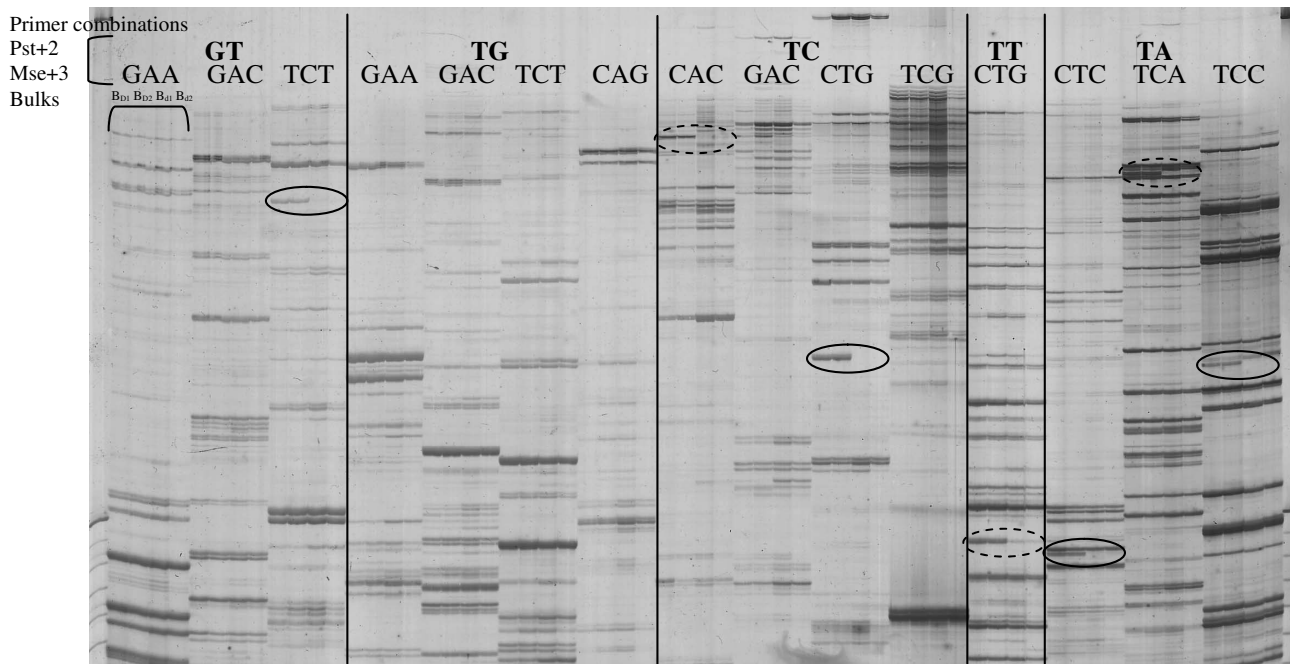
The six polymorphic SCAR markers were subsequently used to genotype the 208 individuals of the genetic link-

age map; it confirmed that their localization was the same as AFLP markers (data not shown).

Furthermore, considering the total size of the obtained sequences (2,711 bp), this analysis revealed seven SNPs. Based on these results the frequency of the SNPs at the vicinity of the *D* locus was estimated to 2.6 SNPs per kb.

#### High resolution mapping of the *D* locus

The fine mapping of the *D* locus was performed in two steps using the six SCAR markers described in the present study and three SSR markers MA026a, BPPCT041 and CPPCT040 already mapped to the proximal end of the linkage group 5 [13,26]. The first step was to genotype the 1,718 individuals from the seven segregating populations with three SCAR markers (D-Scar0, D-Scar2 and D-Scar6) and two SSR markers (MA026a and BPPCT041) spanning a region of 10.2 cM around the *D* locus (Fig. 4). A total of



**Figure 2**  
**AFLP markers detecting polymorphisms between low-acid bulks and normally-acid bulks revealed on polyacrylamide gel.** AFLP markers showing a band in low-acid bulks ( $B_{D1}$  and  $B_{D2}$ ) but not in normally-acid ( $B_{d1}$  and  $B_{d2}$ ) bulks are surrounded with a continuous line. AFLP markers showing a faint band in  $B_{d1}$  and  $B_{d2}$  bulks, not selected for genetic mapping, are surrounded with a dotted line.

308 individuals were found to have at least one recombination event between the farthest markers, MA026a and BPPCT041. The second step was to genotype the resulting 308 recombinant individuals with the three other SCAR markers (D-Scar1, D-Scar3 and D-Scar7) and CPPCT040 which were located within the spanned region. According to the recombination events between these nine markers,

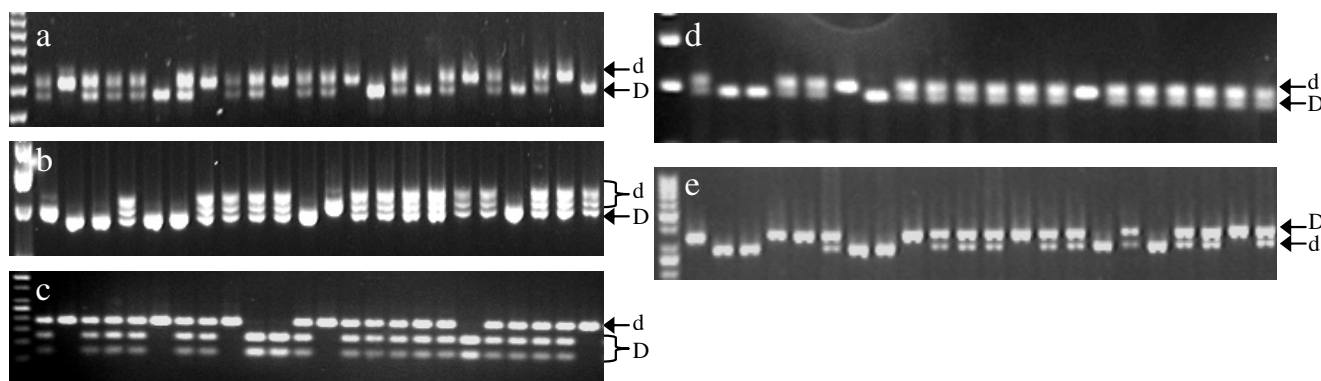
it was possible to determine the precise marker order on linkage group 5 (Fig. 4).

For the 149 recombinant individuals which produced fruits in 2007 and 2008, TA mean values varied from 15 to 167 meq/l and pH mean values ranged from 3.36 to 5.59 (Fig. 5). Among these recombinants, 110 individuals

**Table 2: SCAR and CAPS markers developed from AFLP fragments linked to the D locus**

AFLP marker <sup>size in bp</sup> <sup>1</sup>	SCAR marker	Primer sequence (5'-3')	Size <sup>1</sup> (bp)	P <sup>2</sup>	Annealing temp. (°C)	Enzyme
pGC-AGG <sub>430J-450F</sub>	D-Scar0	F GTGCACAGCTATCTCCTTC R CTCATGGCAACAACATATTC	160 (J) 175 (F)	SSR	52	no
pAC-AAC <sub>402J-412F</sub>	D-Scar1	F GGGATGTGGGTATGTCGTA R ACAAGGAGGAAGCTCTGG	345 (J) 364 (F)	SSR	55	no
pGG-TAC <sub>215J-221F</sub>	D-Scar2	F CCTTACGCTACGACGACAAC R TGAGTCCTGAGTAATACTGTTTCATGTG	142 (J) 148 (F)	InDel	54	no
pTC-GTA <sub>218F-219J</sub>	D-Scar3	F GTTGACATGAAACAAATGACATTG R CAGTCGTTCTTGATGTTCCACATGC	180 (J, F)	SNP	52	AccI
pTG-TGG <sub>470J</sub>	D-Scar6	F CATGGCCCCATCTTTTCAC R GACCAGTTGCATCTCATTTCATATTGG	92 (J) 98 (F)	InDel	55	no
pTC-CTG <sub>470J</sub>	D-Scar7	F CTGGTCATCTACCGTCTC R TCCAACCTCCAAGGCTTGC	334 (J, F)	SNP	55	MseI

<sup>1</sup> (J) 'Ferjalou Jalousia', (F) 'Fantasia', <sup>2</sup> Polymorphism observed.



**Figure 3**

**F<sub>2</sub> individuals screened with SCAR markers on agarose gel.** (a) D-Scar0 on 3% agarose gel (b) D-Scar1 on 2% agarose (c) D-Scar3 digested with *Accl*, on 2% agarose gel (d) D-Scar6 on 3% agarose gel (e) D-Scar7 digested with *Msel*, on 3% agarose gel. Specific band for each allele is indicated (d for normally-acid and D for low-acid).

were classified as producing low-acid fruit, 12 were identified as producing normally-acid fruit and 27 were considered as intermediate and were therefore, not classified. Among the individuals producing low-acid fruit, only 40 individuals recombining from heterozygous (Dd) to homozygous (dd) were informative. Then, only 52 recombinant individuals with extreme values for pH (from 3.36 to 3.68 for individuals with normally-acid fruit and from 4.20 to 5.55 for individuals with low-acid fruit) and TA (from 104 to 167 meq/l for individuals with normally-acid fruit and from 17 to 56 meq/l for individuals with low-acid fruit) were used to identify the position of the *D* locus. Among the 52 recombinant individuals so selected, 36 recombinant individuals between CPPCT040 and BPPCT041 indicated that the *D* locus was located upper than CPPCT040, while fourteen other individuals recombining between MA026a and D-Scar7 proved that the *D* locus was not localized between MA026a and D-Scar1 (Table 3). Two phenotyped individuals recombining between D-Scar0 and CPPCT040 reduced the interval containing the *D* locus: S5848-228 showed that the *D* locus was located upper than CPPCT040 while S6422-237 demonstrated that it was located below D-Scar0 (Table 3). Therefore, it can be concluded that the *D* locus is localized in a 0.4 cM interval between D-Scar0 and CPPCT040 (Fig. 4).

#### **Evaluation of the physical/genetic distance ratio around the *D* locus using a new BAC library**

The peach BAC library produced from F<sub>1</sub>-JF:21 DNA contained about 52,000 clones. Based on the analyses of a subset of clones, the average insert size was estimated at 90 kb, ranging from 50 to 130 kb. According to these pre-

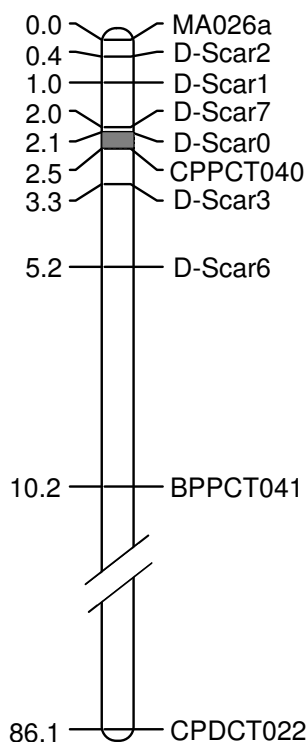
liminary results the covering of this BAC library was estimated at 15–16 × the peach haploid genome. D-Scar0 and D-Scar7 were used to screen the BAC library and four positive clones were found with D-Scar0 and 12 with D-Scar7. Three of the four positive clones with D-Scar0 were found to be also positive when screened with D-Scar7. The ratio between the genetic and physical distances was estimated using markers defined from BACend sequences of a positive clone common to both D-Scar0 and D-Scar7 (Table 4). A distance of 0.6 cM was estimated between the two CAPS markers F109-15-06 and R109-15-06 (Table 4) derived from the BACend sequences of one BAC containing an insert of 150 kb. This results in 1 cM corresponding to 250 kb in the region of the *D* locus.

#### **Discussion**

We describe in this paper major steps towards the cloning of the gene(s) controlling fruit acidity in peach, by phenotypic, genetic and physical characterization of the *D* locus.

The low polymorphism observed between 'Ferjalou Jalousia'<sup>®</sup> and 'Fantasia' using AFLP markers was previously reported using RFLP and SSR markers [13] and was likely the consequence of the very low genetic distance between these two parental varieties [13]. Polymorphic markers would have been considerably increased by deep sequencing methods of the AFLPs [40]. Using the classical AFLP method in combination with bulk segregant analysis, 14 AFLP markers located within the 10 cM region harbouring the *D* locus were identified and no marker was mapped to another linkage group. These results confirmed that acidity trait in peach is not complex and should be controlled by a major gene.





**Figure 4**  
**Fine genetic map of the *D* locus on the distal end of linkage group 5.** SSR and SCAR markers are on the right and genetic distances are indicated on the left from the top (cM) and based on the analyses of 1,718  $F_2$  individuals. The grey part corresponds to the position of the *D* locus.

Sequence analysis of the AFLP markers selected for conversion into SCAR revealed, at the vicinity of the *D* locus, an SNPs frequency 3.6 fold lower than the one reported in the 'Texas' × 'Earlygold' (TxE) reference *Prunus* map derived from an almond × peach interspecific cross (Illa E., personal communication).

To more accurately position the *D* locus, it was necessary to identify individuals of the extended population that had recombination events tightly linked to the *D* locus. The strategy followed in the present work involving two successive steps (firstly the genotyping of 1,718 individuals with the *D* locus-flanking markers and secondly the analysis of the recombinant individuals with additional tightly linked markers) reduced considerably the number of individuals that needed to be genotyped and phenotypically characterized. Fruit acidity is usually evaluated by pH or TA measurements. In this work, the use of both pH

and TA was essential for the characterization of fruit acidity. In addition, the definition of thresholds based on the analyses of individuals without recombination event in the MA026a-BPPCT041 interval allowed a precise characterization of the phenotype. Thus, the phenotyping of the recombinant individuals with the pH and TA threshold strategy prevented misclassification of intermediate individuals that can be either homozygous (dd) or heterozygous (Dd) for the *D* locus.

The development of tightly linked markers and the phenotyping of recombinant individuals allowed the precise localization of the *D* locus. As fruit acidity is a major selection criterion, the *D*-linked markers could be used for marker assisted selection which would allow early selection of trees with the desirable character.

To estimate the relationship between the genetic and the physical distance at the vicinity of the *D* locus we anchored a BAC clone to the genetic map. Based on this analysis the ratio was estimated to 250 kb/cM. At the peach *evergrowing* (*evg*) locus the ratio was estimated to 10 to 35 kb/cM [41]. These ratios are smaller than the estimated average ratio on the TxE *Prunus* reference map [42] which is 553 kb/cM according to the genome size [2]. This is not surprising, as the physical/genetic distance ratio is known to vary along chromosomes [43-45]. The identification of the physical/genetic distance ratio in the vicinity of the *D* locus was important for estimating the number of walks needed for cloning the *D* locus. The *D* locus was localized in a 0.4 cM interval corresponding to a physical distance of 100 kb. Thus, one or two walks with BAC clones with an insert size of 90 kb should be sufficient to identify a BAC clone harbouring the *D* locus.

Sequenced BAC clones in peach [41,46], plum, apricot [46] and pear [47] revealed a gene density of 14 to 36 genes per 100 kb genomic sequence. Thus, in the 100 kb *D* locus region 14 to 36 candidate genes are expected. To identify the *D* gene(s) among these candidate genes, the aim will be to map accurately the recombination events relative to the predicted genes. To facilitate this analysis, the PPJFH BAC library was constructed from the  $F_1$ -JF:21 hybrid between 'Ferjalou Jalousia'<sup>®</sup> and 'Fantasia' to identify one BAC clone for each allele. The two orthologous BAC clones will be sequenced and annotated and genetically dissected. In further analyses, the natural variability of the candidate genes will be explored within a peach germplasm collection to associate the haplotype to the phenotypic variation. Functional studies such as reverse genetics experiments should then provide further evidence for or against their involvement in fruit acidity.

**Table 3: Genotypes and phenotypes of F<sub>2</sub> recombinant individuals for nine markers framing the D locus**

Individual	P <sup>1</sup>	Genotype <sup>2</sup> (G)									No of F <sub>2</sub> *
		MA026a	D-Scar2	D-Scar1	D-Scar7	D-Scar0	CPPCT040	D-Scar3	D-Scar6	BPPCT041	
S8220-1186	[D]	<b>H</b>	<b>H</b>	<b>H</b>	<b>H</b>	<b>H</b>	<b>H</b>	<b>H</b>	<b>H</b>	F	15
S8220-1321	[d]	F	F	F	F	F	F	F	F	<b>H</b>	3
S5848-350	[D]	<b>H</b>	<b>H</b>	<b>H</b>	<b>H</b>	<b>H</b>	<b>H</b>	<b>H</b>	F	F	11
S8220-1090	[d]	F	F	F	F	F	F	F	<b>H</b>	<b>H</b>	3
S5848-332	[D]	<b>H</b>	<b>H</b>	<b>H</b>	<b>H</b>	<b>H</b>	<b>H</b>	F	F	F	2
S6422-022	[d]	F	F	F	F	F	F	<b>H</b>	<b>H</b>	<b>H</b>	2
S5848-228	[D]	<b>H</b>	<b>H</b>	<b>H</b>	<b>H</b>	<b>H</b>	F	F	F	F	1
S6422-237	[D]	F	F	F	F	F	<b>H</b>	<b>H</b>	<b>H</b>	<b>H</b>	1
S8220-2037	[d]	<b>H</b>	<b>H</b>	<b>H</b>	F	F	F	F	F	F	1
S8220-1188	[D]	F	F	F	<b>H</b>	<b>H</b>	<b>H</b>	<b>H</b>	<b>H</b>	<b>H</b>	7
S6361-020	[d]	<b>H</b>	<b>H</b>	F	F	F	F	F	F	F	2
S5848-147	[D]	F	F	<b>H</b>	<b>H</b>	<b>H</b>	<b>H</b>	<b>H</b>	<b>H</b>	<b>H</b>	1
S6422-452	[d]	<b>H</b>	F	F	F	F	F	F	F	F	1
S8220-1045	[D]	F	<b>H</b>	<b>H</b>	<b>H</b>	<b>H</b>	<b>H</b>	<b>H</b>	<b>H</b>	<b>H</b>	2

<sup>1</sup> P: Phenotype, [d]: normally acid fruit, [D]: low acid fruit, <sup>2</sup> F: homozygous for the 'Fantasia' allele (dd), H: heterozygous highlighted in bold (Dd), \* Number of F<sub>2</sub> individuals having the same phenotype and genotype

The complete sequencing of the BAC clones will provide candidate genes for the D locus. These candidate genes may be structural genes implicated in metabolism or transport in agreement with our existing knowledge of fruit physiology or genes with novel structural or regulatory functions. Sequencing data will also provide information about *Prunus* genome organization in this particular region, which may be compared to homologous region in other Rosaceae species and even other fruit species. Microsystems analysis across Rosaceae species will provide insight into gene order, orientation and structural rearrangements of this particular region and through comparative genomics, may contribute to improve our knowledge on evolutionary and diversification processes among this family as demonstrated for *Oryza* [48].

**Conclusion**

In conclusion, the present work describes, for the first time, the fine mapping of a locus involved in a fruit quality trait on perennial plants via the chromosome landing approach. The development of tightly linked markers and the phenotyping of recombinant individuals allowed the precise localization of the D locus in a 0.4 cM interval corresponding to 100 kb. Using the constructed PPJFH BAC library with a mean insert size of 90 kb, one or two walks should be sufficient to identify a BAC clone harbouring the D locus. To our knowledge, only few fine genetic maps were realized using a large number of trees and only for resistance genes [49,50]. One of the major limitations for this strategy is the generation of a large population requiring an extended orchard maintained over several years. Our mapping population of 2,086 plants that segregates for many agronomic traits as well as the PPJFH BAC

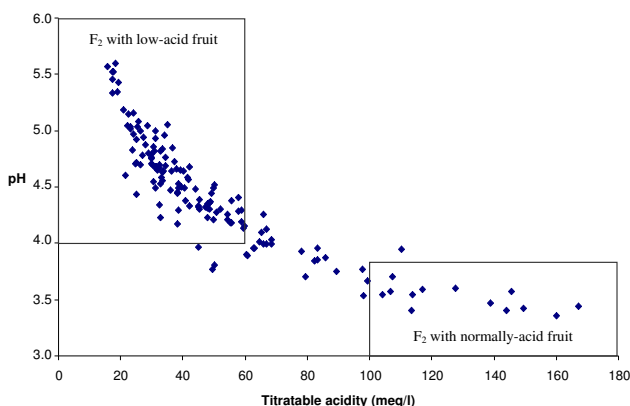
library will permit the genetic dissection of, not only the D locus, but also other traits such as Af (aborting fruit), S (flat/round fruit), G (peach/nectarine) and Ps (pollen sterility). This mapping population could be also exploited in any future genome sequencing project in peach where anchoring sequences or BAC contigs to the genetic map is a crucial step.

**Methods**

**Plant material**

The genetic linkage map was based on the segregation analyses of a peach F<sub>2</sub> progeny. This progeny includes 208 individuals obtained from the selfing of a single F<sub>1</sub> hybrid (F<sub>1</sub>-JF:21) issued from a cross between 'Ferjalou Jalousia'<sup>®</sup> a low-acid fruit variety and 'Fantasia' a normally-acid fruit variety. This population segregates for six Mendelian traits (low-acid/normally-acid fruit D, peach/nectarine G, flat/round fruit S, clingstone/freestone F, pollen sterility Ps, aborting fruit Af) [13] and for several characters involved in fruit quality as soluble sugar and organic acid concentrations [17]. Among the 208 individuals, 151 produced fruit at maturity while 57 produced flat fruit that fell after two months of growth and were not used in this study (Table 5).

For the fine mapping of the D locus, a total of 1,878 F<sub>2</sub> additional individuals were obtained from the selfing of seven different F<sub>1</sub> genotypes (Table 5). Three F<sub>1</sub> individuals were issued from the cross between 'Ferjalou Jalousia'<sup>®</sup> and 'Fantasia' (F<sub>1</sub>-JF:21, F<sub>1</sub>-JF:28, F<sub>1</sub>-JF:104), two from the reverse cross (F<sub>1</sub>-FJ:47, F<sub>1</sub>-FJ:49), one from a cross between 'Fantasia' and 'Fercopale Platina'<sup>®</sup> (F<sub>1</sub>-FP:10) and one from the reverse cross (F<sub>1</sub>-PF:77). 'Ferjalou Jalousia'<sup>®</sup> is



**Figure 5**  
**Biplot of pH and titratable acidity of fruit juice.** Mean values observed in 2007 are represented. pH and TA biplot for F<sub>2</sub> individuals recombining between MA026a and BPPCT041, phenotyped among the 1,718 F<sub>2</sub> individuals. Individuals not included in squares are considered as intermediate.

homozygous for the dominant allele (DD), 'Fantasia' is homozygous for the recessive one (dd) and the seven F<sub>1</sub> hybrids are heterozygous (Dd) for the *D* locus. 'Ferjalou Jalousia<sup>®</sup>' dominant allele is derived from 'Kiang-Si' that originated from China. 'Fercopale Platina<sup>®</sup>' and 'Ferjalou Jalousia<sup>®</sup>' shared the same common grandparents ('Kiang-Si' and 'Independence') (Fig. 6), and both had the same dominant allele for the *D* locus and produced flat peaches. According to a marker assisted selection for the *Af* gene that segregated in the 1,878 F<sub>2</sub> individuals, 1,510 individuals were identified to produce fruit at maturity and were therefore genotyped. Among them, 1,084 individuals were planted in 2005 and 426 in 2006. The fine map was based on the genotyping of a total of 1,718 F<sub>2</sub> individuals including the mapping population of 208 individuals and the 1,510 F<sub>2</sub> additional individuals that should produce fruit at maturity (Table 5).

**Fruit acidity phenotyping**

The 151 F<sub>2</sub> individuals of the mapping population producing fruit and recombinant individuals among the F<sub>2</sub> progenies were phenotyped in 2007 and 2008. Two harvests separated by four days were performed for each indi-

vidual. For each harvest, six fruits/individual were collected at maturity stage. TA and pH analyses were measured on fruit juice by using an equal volume of juice from each fruit as described previously [14].

To avoid any misclassification of recombinant individuals, we decided to rely on the analyses of homozygous and heterozygous individuals and to define thresholds in order to distinguish individuals with low-acid fruit from those with normally-acid fruit. Individuals, without recombination event, were selected on their genotype in the MA026a-BPPCT041 interval. Student's t-test was used to compare pH and TA mean values between homozygous and heterozygous individuals.

**DNA extraction**

Genomic DNA was extracted from young expanded terminal leaves. Fifteen milligrams of fresh weight were collected for each tree in 96 collection microtubes of 1.2 ml containing a tungsten carbide bead (3 mm diameter). They were ground in liquid nitrogen by using a Mixer Mill MM 300 (Retsch, Haan, Germany) for 1 min and 30 s and genomic DNA was extracted according to the method previously described [51].

**BSA-AFLP**

For Amplified Fragment Length Polymorphism (AFLP) assay combined with BSA, two low-acid (*D/D* or *D/d*) DNA bulks (B<sub>D1</sub>, B<sub>D2</sub>) and two normally-acid (*d/d*) DNA bulks (B<sub>d1</sub>, B<sub>d2</sub>) were used to identify putative markers linked to the *D* locus [52]. Individuals were selected among the 208 F<sub>2</sub> used for the genetic linkage map according to juice pH and TA values measured in 2002 and 2003. Equal amounts of DNA from eleven individuals from the JxF<sub>2</sub> mapping population were pooled to construct each bulk.

The AFLP technique was performed following the protocol developed by [53] with some modifications. Genomic DNA (250 ng) was digested with two restriction enzymes *Pst*I and *Mse*I in a volume of 17.5 µl. The first PCR amplification was performed with primers having no selective nucleotide and then the second PCR amplification was carried out with primers having two selective nucleotides for *Pst*I and three for *Mse*I. PCR products were mixed with an equal volume of loading buffer (95% formamide,

**Table 4: Markers developed from BACend sequences of a positive BAC clone with both D-Scar0 and D-Scar7**

BACend marker	Primer sequence (5'-3')	Size* (bp)	Polymorphism	Annealing temp. (°C)	Enzyme
F109-15-06	F GTAGGATGAACTCAAAGGTG R GTTGGAATGACACTGGCTA	570 (J, F)	SNP	52	<i>Tsp509I</i>
R109-15-06	F GTGGACTTCATCCCATCTAC R GGTCCAGAAGATGATGCAC	540 (J, F)	SNP	54	<i>HincII</i>

\* (J) 'Ferjalou Jalousia<sup>®</sup>', (F) 'Fantasia'

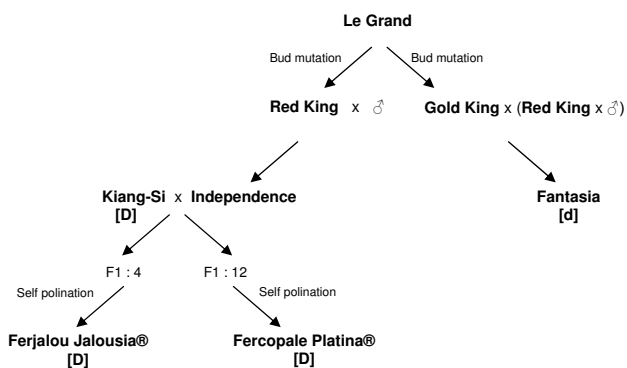
**Table 5: Origin of F<sub>2</sub> individuals used for map construction and fine mapping of the D locus**

Cross	F <sub>1</sub> name	F <sub>2</sub> name	Number of F <sub>2</sub> individuals
<b>F<sub>2</sub> used for the construction of the genetic linkage map</b>			
'Ferjalou Jalousia®' × 'Fantasia'	F <sub>1</sub> -JF:21	S8220	<b>208</b>
Producing fruits			151
<b>F<sub>2</sub> additional individuals produced for the fine mapping of the D locus</b>			
'Ferjalou Jalousia®' × 'Fantasia'	F <sub>1</sub> -JF:21	S8220	418
	F <sub>1</sub> -JF:28	S6184	113
	F <sub>1</sub> -JF:104	S7133	182
'Fantasia' × 'Ferjalou Jalousia®'	F <sub>1</sub> -FJ:47	S6422	451
	F <sub>1</sub> -FJ:49	S6421	106
'Fantasia' × 'Fercopale Platina®'	F <sub>1</sub> -FP:10	S5848	405
'Fercopale Platina®' × 'Fantasia'	F <sub>1</sub> -PF:77	S6361	203
Total of the additional F <sub>2</sub> individuals			1,878
Additional F <sub>2</sub> that will have fruits according to MAS for the Af gene			<b>1,510</b>
<b>Total of the F<sub>2</sub> individuals used for fine mapping</b>			<b>1,718</b>

0.05% xylene cyanol, 0.05% bromophenol blue, 10 mM EDTA, pH 8.0). The mixture was heated for 5 min at 95 °C, and then quickly cooled on ice. Each sample mixture was loaded on a 4.5% denaturing polyacrylamide gel and visualized by the silver staining system as described by [54]. Sixteen *Pst*I+2 primers and 64 *Mse*I+3 primers were tested consisting in a total of 1,024 primer combinations. Markers derived from *Pst*I+2/*Mse*I+3 primer combinations were named as pXX-YYY (X for the selective *Pst*I nucleotides and Y for the selective *Mse*I nucleotides). Subsequently, polymorphic AFLP primer combinations between bulks were used to screen the 208 F<sub>2</sub> individuals of the mapping population.

**Conversion of AFLP markers into SCAR and CAPS markers**

AFLP markers linked to the D locus were selected for conversion into PCR markers for further easy use in large-scale screening of the 1,718 individuals and BAC library. After silver staining, marker fragments of the parents and of two F<sub>2</sub> individuals were picked with a tip on the dried polyacrylamide gel [55] and dissolved in 15 µl deionized water. PCR amplifications were performed using 1 µl dilution with the same conditions as the selective PCR for AFLP reaction but with primers without selective nucleotides. The products were separated on 2.0% agarose gel, purified using a MinElute® PCR Purification Kit (Qiagen) and then cloned into the pGEM-T easy vector (Promega, Madison, WI, USA). Clones were sequenced by Cogenics (Meylan, France) and specific primers were designed using Primer3 software (version V.0.4.0) based on these sequences. Designed primers were then tested for PCR amplification on low-acid individuals, normally-acid individuals and also on 'Ferjalou Jalousia®', 'Fantasia' and the F<sub>1</sub> hybrid (F<sub>1</sub>-JF:21). Reaction mixtures (10 µl) contained 0.2 µM of each primer, 200 µM of dNTP, 10 ng template DNA, 0.26 U of *Taq* DNA polymerase (Sigma-Aldrich), 1× PCR buffer provided with the enzyme. PCR reactions were carried out for 2 min at 94 °C, followed by 38 cycles of 45 s at 94 °C, 45 s at annealing temperature, 45 s at 72 °C, with final elongation for 5 min at 72 °C. Finally, the amplified fragments were tested for their polymorphism on a 2 to 3% agarose gel or 4.5% polyacrylamide denaturing gel.



**Figure 6**  
**Origin of 'Ferjalou Jalousia®', 'Fantasia' and 'Fercopale Platina®' peach varieties.** The phenotype for the D locus is indicated for each variety. Varieties with [D] phenotype produce low-acid fruit and varieties with [d] phenotype produce normally-acid fruit.

**Segregation analysis and map construction**

Each polymorphic marker was tested by a chi-square for goodness of fit to the segregation ratios 1:2:1 expected for codominant markers and 3:1 expected for dominant markers in a F<sub>2</sub> population. The linkage map was constructed using the MAPMAKER/EXP V3.0 software [56]. Markers were first divided into linkage groups using a crit-

ical LOD score threshold of 5. The Kosambi function was used to convert recombination units into genetic distances.

### Fine mapping

The 1,510 additional individuals that would have fruit at maturity were used to complete the mapping population to a total of 1,718 individuals segregating for the *D* locus. These individuals were screened for five markers, two SSR markers and three new SCAR markers, spanning a large region around the *D* locus: MA026a and BPPCT041, previously mapped on JxF linkage map [13] and three AFLP markers transformed into SCAR markers. Recombinant individuals detected in this region were genotyped with three other AFLP markers transformed into SCAR markers and CPPCT040 a SSR marker mapped on the top of the linkage group 5 of 'Texas' × 'Earlygold' linkage map [26]. The phenotype of the recombinant individuals compared to the recombination point enabled the localization of the *D* locus. Among the 308 recombinant individuals detected, 149 individuals producing fruit in 2007 and 2008 were phenotyped for fruit pH and TA.

### Bacterial Artificial Chromosome (BAC) library construction

The *Prunus persica* PPJFH BAC DNA library was realized at URGV (INRA, Evry) and constructed as described previously [57]. Nuclei were isolated from 32 g of young leaves frozen in liquid nitrogen from F<sub>1</sub> hybrid DNA heterozygous for all the mendelian characters segregating in the JxF cross. Restriction fragments were subjected to a double size selection in a CHEF-DRIII apparatus (Bio-Rad) by pulse field gel-electrophoresis (PFGE). The DNA from the agarose slices was electroeluted and cloned into the pIndigoBAC-5 (*Hind* III Cloning-Ready) Vector (EPICENTRE® Technologies) for ligation reactions. Competent *E. coli* DH10B cells (Invitrogen) were transformed by electroporation and transformants were selected on LB-Xgal-IPTG plates containing 12.5 µg/ml chloramphenicol. White colonies were picked using a Genetix Q-Bot and stored in 384-well microtiter plates (Genetix) at -80°C. The PPJFH BAC library was composed of 150 plates corresponding to 57,600 total BAC clones. BAC clones from each plate were mixed into pools of 384 clones (designated 'plate pools'). The BAC clones from each plate pool were resuspended into sterilized water and DNA extracted before PCR reactions. In the first step, positive plates were identified by screening the plate pools then in the second step the 16 clones of each of the 24 columns of the positive 384-well plates were pooled together and screened to identify the positive column. The third step consisted in identifying the positive BAC clone by screening the 16 clones of each positive column pool. PCR amplifications were carried out as described before for PCR experiments. Extracted DNA from BAC clones was digested with *Not*I and the

digestion products were subjected to pulsed-field gel electrophoresis (PFGE) as described previously [57]: 25 µl DNA from each clone was digested by *Not*I in a 30 µl reaction mix and loaded on PFGE. Insert size was estimated using the PFGE lambda ladder (BioLabs, Frankfurt, Germany).

To associate a genetic distance to the physical distance obtained with the PFGE, primers were designed using Primer3 software (version V.0.4.0) based on two BACend sequences of a chosen positive BAC clone for two markers (D-Scar0 and D-Scar7). The primers of two markers were tested for PCR amplification on 'Ferjalou Jalousia'® and 'Fantasia' to identify polymorphism between the parents. Reaction mixtures and PCR conditions were done as described for SCAR markers and the amplified fragments were then sequenced. Obtained markers were used to genotype only individuals recombining between D-Scar1 and CPPCT040 framing D-Scar0 and D-Scar7.

### Authors' contributions

KB carried out the molecular genetic studies, the sequence alignment and drafted the manuscript. KB and AB conceived and designed the experiments for the BAC library. GC participated to AFLP mapping. CT carried out the BAC library pooling and extraction. KB, GC, AM and ED performed the phenotypic analysis. ED and GC participated in the genetic studies. AB and ED conceived the study and participated in its design. AB, AM and ED helped to draft the manuscript. All authors read and approved the final manuscript.

### Acknowledgements

This work was partly funded by INRA, the Ministry of Foreign Affairs of Algeria and the "Conseil Régional d'Aquitaine" (Convention # 20054380505). The authors thank Dr R. Monet for generating the F<sub>1</sub> parents of the populations, the technical team of UREF (C. Renaud, G. Capdeville, Y. Tauzin, L. Fouilhax and J. Joly) for producing the hybrids, fruit harvesting and biochemical characterization, the Experimental Unit of INRA located at "Domaine des Jarres" for growing the trees, Xavier Giresse for technical support and comments on an earlier version, Patricia Faivre-Rampant for her comments and Drs Michel Caboche and Frédéric Laigret for being at the initiative of the project, their support and helpful comments on this paper. The authors thank also the unknown reviewers for helping us to improve this manuscript.

### References

- Potter D, Eriksson T, Evans RC, Oh S, Smedmark JEE, Morgan DR, Kerr M, Robertson KR, Arsenault M, Dickinson TA, et al: **Phylogeny and classification of Rosaceae**. *Plant Syst Evol* 2007, **266**(1-2):5-43.
- Baird WV, Estager AS, Wells JK: **Estimating nuclear-DNA content in peach and related diploid species using laser flow-cytometry and DNA hybridization**. *J Am Soc Hortic Sci* 1994, **119**(6):1312-1316.
- Zhebentyayeva TN, Swire-Clark G, Georgi LL, Garay L, Jung S, Forrest S, Blenda AV, Blackmon B, Mook J, Horn R, et al: **A framework physical map for peach, a model Rosaceae species**. *Tree Genet Genomes* 2008, **4**(4):745-756.

4. Dirlwanger E, Arús P: **Markers in Fruit Tree Breeding: Improvement of Peach.** In *Molecular Marker Systems in Plant Breeding and Crop Improvement Volume 55*. Edited by: Lörz H, Wenzel G. Springer; 2005:279-302.
5. Fideghelli C, Della Strada G, Grassi F, Morico G: **The peach industry in the world: present situation and trend.** *Acta Hort* 1998, **465**:29-40.
6. Genard M, Bruchou C: **Multivariate-analysis of within-tree factors accounting for the variation of peach fruit-quality.** *Sci Hort* 1992, **52**(1-2):37-51.
7. Esti M, Messia MC, Sinesio F, Nicotra A, Conte L, LaNotte E, Palleschi G: **Quality evaluation of peaches and nectarines by electrochemical and multivariate analyses: Relationships between analytical measurements and sensory attributes.** *Food Chem* 1997, **60**(4):659-666.
8. Byrne DH, Nikolic AN, Burns EE: **Variability in sugars, acids, firmness, and colour characteristics of 12 peach genotypes.** *J Am Soc Hort Sci* 1991, **116**:1004-1006.
9. Moing A, Svanella L, Rolin D, Gaudillere M, Gaudillere JP, Monet R: **Compositional changes during the fruit development of two peach cultivars differing in juice acidity.** *J Am Soc Hort Sci* 1998, **123**(5):770-775.
10. Dejong TM, Moing A: **Carbon assimilation, partitioning and budget modeling.** In *The Peach, Botany, Production and Uses* Edited by: Layne DR, Bassi D. Wallingford, UK: CAB; 2008:244-263.
11. Yoshida M: **Genetical studies on the fruit quality of peach varieties. I. Acidity.** *Bull Hort Res Stn Jpn Ser A* 1970, **9**:1-15.
12. Monet R: **Transmission génétique du caractère "fruit doux" chez le pêcheur. Incidence sur la sélection pour la qualité.** *Eucarpia Fruit Section, Tree Fruit Breeding 1979*; INRA, Angers, France 1979:273-276.
13. Dirlwanger E, Cosson P, Boudehri K, Renaud C, Capdeville G, Tausin Y, Laigret F, Moing A: **Development of a second-generation genetic linkage map for peach [*Prunus persica* (L.) Batsch] and characterization of morphological traits affecting flower and fruit.** *Tree Genet Genomes* 2006, **3**(1):1-13.
14. Dirlwanger E, Moing A, Rothan C, Svanella L, Pronier V, Guye A, Plomion C, Monet R: **Mapping QTLs controlling fruit quality in peach (*Prunus persica* (L.) Batsch).** *Theor Appl Genet* 1999, **98**(1):18-31.
15. Moing A, Rothan C, Svanella L, Just D, Diakou P, Raymond P, Gaudillere JP, Monet R: **Role of phosphoenolpyruvate carboxylase in organic acid accumulation during peach fruit development.** *Physiol Plant* 2000, **108**(1):1-10.
16. Etienne C, Moing A, Dirlwanger E, Raymond P, Monet R, Rothan C: **Isolation and characterization of six peach cDNAs encoding key proteins in organic acid metabolism and solute accumulation: involvement in regulating peach fruit acidity.** *Physiol Plant* 2002, **114**(2):259-270.
17. Etienne C, Rothan C, Moing A, Plomion C, Bodenes C, Svanella-Dumas L, Cosson P, Pronier V, Monet R, Dirlwanger E: **Candidate genes and QTLs for sugar and organic acid content in peach [*Prunus persica* (L.) Batsch].** *Theor Appl Genet* 2002, **105**(1):145-159.
18. Visser T, Verhaegh JJ: **Inheritance and selection of some fruit character of apple. I. Inheritance of low and high acidity.** *Euphytica* 1978, **27**:753-760.
19. Stevens MA: **Citrate and malate concentration in tomato fruits: Genetic control and maturational effects.** *J Am Soc Hort Sci* 1972, **97**:655-658.
20. Boubals D, Bourzeix M, Guitraud J: **Le Gora Chirine, variété de vigne iranienne à faible teneur en acides organiques.** *Ann Amélior Plantes* 1971, **21**:281-285.
21. Cameron JW, Soost RK: **Acidity and total soluble solids in *Citrus* hybrids and advanced crosses involving acidless orange and acidless pummelo.** *J Am Soc Hort Sci* 1977, **120**:510-514.
22. Beruter J: **Carbon partitioning in an apple mutant deficient in malic acid.** *Acta Hort* 1998, **466**:23-28.
23. Maliepaard C, Alston FH, van Arkel G, Brown LM, Chevreau E, Durnemann F, Evans KM, Gardiner S, Guilford P, van Heusden AW, et al.: **Aligning male and female linkage maps of apple (*Malus pumila* Mill.) using multi-allelic markers.** *Theor Appl Genet* 1998, **97**(1-2):60-73.
24. Yao YX, Li M, Liu Z, Hao YJ, Zhai H: **A novel gene, screened by cDNA-AFLP approach, contributes to lowering the acidity of fruit in apple.** *Plant Physiol Biochem* 2007, **45**(2):139-145.
25. King GJ, Lynn JR, Dover CJ, Evans KM, Seymour GB: **Resolution of quantitative trait loci for mechanical measures accounting for genetic variation in fruit texture of apple (*Malus pumila* Mill.).** *Theor Appl Genet* 2001, **102**(8):1227-1235.
26. Dirlwanger E, Graziano E, Joobeur T, Garriga-Caldere F, Cosson P, Howad W, Arús P: **Comparative mapping and marker-assisted selection in Rosaceae fruit crops.** *Proc Natl Acad Sci USA* 2004, **101**(26):9891-9896.
27. Sargent DJ, Marchese A, Simpson DW, Howad W, Fernández-Fernández F, Monfort A, Arús P, Evans KM, Tobutt KR: **Development of "universal" gene-specific markers from *Malus* spp. cDNA sequences, their mapping and use in synteny studies within Rosaceae.** *Tree Genet Genomes* 2009, **5**:133-145.
28. Fang DQ, Federici CT, Roose ML: **Development of molecular markers linked to a gene controlling fruit acidity in *Citrus*.** *Genome* 1997, **40**(6):841-849.
29. Albertini MV, Carcouet E, Pailly O, Gambotti C, Luro F, Berti L: **Changes in organic acids and sugars during early stages of development of acidic and acidless *Citrus* fruit.** *J Agric Food Chem* 2006, **54**(21):8335-8339.
30. Albertini MV: **Caractérisation biochimique et moléculaire des fruits d'agrumes (*Citrus* sp.).** In PhD Thesis France: University of Corsica Pascal Paoli; 2007.
31. Fulton TM, Bucheli P, Voirol E, Lopez J, Petiard V, Tanksley SD: **Quantitative trait loci (QTL) affecting sugars, organic acids and other biochemical properties possibly contributing to flavor, identified in four advanced backcross populations of tomato.** *Euphytica* 2002, **127**(2):163-177.
32. Chaib J, Lecomte L, Buret M, Causse M: **Stability over genetic backgrounds, generations and years of quantitative trait locus (QTLs) for organoleptic quality in tomato.** *Theor Appl Genet* 2006, **112**(5):934-944.
33. Causse M, Duffe P, Gomez MC, Buret M, Damidaux R, Zamir D, Gur A, Chevalier C, Lemaire-Chamley M, Rothan C: **A genetic map of candidate genes and QTLs involved in tomato fruit size and composition.** *J Exp Bot* 2004, **55**(403):1671-1685.
34. Pflieger S, Lefebvre V, Causse M: **The candidate gene approach in plant genetics: a review.** *Mol Breed* 2001, **7**(4):275-291.
35. Ogundiwin EA, Peace CP, Nicolet CM, Rashbrook VK, Gradziel TM, Bliss FA, Parfitt D, Crisosto CH: **Leucoanthocyanidin dioxygenase gene (PpLDOX): a potential functional marker for cold storage browning in peach.** *Tree Genet Genomes* 2008, **4**(3):543-554.
36. Peace CP, Crisosto CH, Gradziel TM: **Endopolygalacturonase: A candidate gene for Freestone and Melting flesh in peach.** *Mol Breed* 2005, **16**(1):21-31.
37. Tanksley SD, Ganai MW, Martin GB: **Chromosome landing: a paradigm for map-based gene cloning in plants with large genomes.** *Trends Genet* 1995, **11**(2):63-68.
38. Kovermann P, Meyer S, Hortensteiner S, Picco C, Scholz-Starke J, Ravera S, Lee Y, Martinoia E: **The Arabidopsis vacuolar malate channel is a member of the ALMT family.** *Plant J* 2007, **52**(6):1169-1180.
39. Sze H, Schumacher K, Muller ML, Padmanaban S, Taiz L: **A simple nomenclature for a complex proton pump: VHA genes encode the vacuolar H(+)-ATPase.** *Trends Plant Sci* 2002, **7**(4):157-161.
40. van Orsouw NJ, Hogers RC, Janssen A, Yalcin F, Snoeijers S, Verstege E, Schneiders H, Poel H van der, van Oeveren J, Verstege H, et al.: **Complexity reduction of polymorphic sequences (CRoPS): a novel approach for large-scale polymorphism discovery in complex genomes.** *PLoS ONE* 2007, **2**(11):e1172.
41. Bielenberg DG, Wang YE, Li Z, Zhebentyayeva T, Fan S, Reighard GL, Scorza R, Abbott AG: **Sequencing and annotation of the ever-growing locus in peach [*Prunus persica* (L.) Batsch] reveals a cluster of six MADS-box transcription factors as candidate genes for regulation of terminal bud formation.** *Tree Genet Genomes* 2008, **4**(3):495-507.
42. Howad W, Yamamoto T, Dirlwanger E, Testolin R, Cosson P, Cipriani G, Monforte AJ, Georgi L, Abbott AG, Arús P: **Mapping with a few plants: using selective mapping for microsatellite saturation of the *Prunus* reference map.** *Genetics* 2005, **171**(3):1305-1309.
43. Fridman E, Pleban T, Zamir D: **A recombination hotspot delimits a wild-species quantitative trait locus for tomato sugar con-**

- tent to 484 bp within an invertase gene. *Proc Natl Acad Sci USA* 2000, **97(9)**:4718-4723.
44. Ballvora A, Schornack S, Baker BJ, Ganai M, Bonas U, Lahaye T: **Chromosome landing at the tomato Bs4 locus.** *Mol Genet Genomics* 2001, **266(4)**:639-645.
  45. DeScenzo RA, Wise RP: **Variation in the ratio of physical to genetic distance in intervals adjacent to the Mla locus on barley chromosome 1H.** *Mol Gen Genet* 1996, **251(4)**:472-482.
  46. Jung S, Jivan D, Cho I, Lee T, Abbott A, Sosinski B, Main D: **Synten of Prunus and other model plant species.** *BMC Genomics* 2009, **10**:76.
  47. Okada K, Tonaka N, Moriya Y, Norioka N, Sawamura Y, Matsumoto T, Nakanishi T, Takasaki-Yasuda T: **Deletion of a 236 kb region around S<sub>4</sub>-RNase in a stylar-part mutant S<sub>4</sub><sup>sm</sup>-haplotype of Japanese pear.** *Plant Mol Biol* 2008, **66(4)**:389-400.
  48. Ammiraju JS, Lu F, Sanyal A, Yu Y, Song X, Jiang N, Pontaroli AC, Rambo T, Currie J, Collura K, et al.: **Dynamic evolution of oryza genomes is revealed by comparative genomic analysis of a genus-wide vertical data set.** *Plant Cell* 2008, **20(12)**:3191-3209.
  49. Deng Z, Huang S, Ling P, Yu C, Tao Q, Chen C, Wendell MK, Zhang HB, Gmitter FG Jr: **Fine genetic mapping and BAC contig development for the citrus tristeza virus resistance gene locus in Poncirus trifoliata (Raf.).** *Mol Genet Genomics* 2001, **265(4)**:739-747.
  50. Claverie M, Dirlwanger E, Cosson P, Bosselut N, Lecouls AC, Voisin R, Kleinhentz M, Lafargue B, Caboche M, Chalhou B, et al.: **High-resolution mapping and chromosome landing at the root-know nematode resistance locus Ma from Myrobalan plum using a large-insert BAC DNA library.** *Theor Appl Genet* 2004, **109(6)**:1318-1327.
  51. Viruel MA, Messeguer R, Devicente MC, Garciamas J, Puigdomenech P, Vargas F, Arús P: **A linkage map with RFLP and isozyme markers for almond.** *Theor Appl Genet* 1995, **91(6-7)**:964-971.
  52. Michelmore RW, Paran I, Kesseli RV: **Identification of markers linked to disease-resistance genes by bulked segregant analysis: a rapid method to detect markers in specific genomic regions by using segregating populations.** *Proc Natl Acad Sci USA* 1991, **88(21)**:9828-9832.
  53. Vos P, Hogers R, Bleeker M, Reijans M, Lee T van de, Hornes M, Frijters A, Pot J, Peleman J, Kuiper M, et al.: **AFLP: a new technique for DNA fingerprinting.** *Nucleic Acids Res* 1995, **23(21)**:4407-4414.
  54. Bassam BJ, Caetano-Anolles G, Gresshoff PM: **Fast and sensitive silver staining of DNA in polyacrylamide gels.** *Anal Biochem* 1991, **196(1)**:80-83.
  55. Cho YG, Blair MW, Panaud O, McCouch SR: **Cloning and mapping of variety-specific rice genomic DNA sequences: amplified fragment length polymorphisms (AFLP) from silver-stained polyacrylamide gels.** *Genome* 1996, **39(2)**:373-378.
  56. Lander ES, Green P, Abrahamson J, Barlow A, Daly MJ, Lincoln SE, Newburg L: **MAPMAKER: an interactive computer package for constructing primary genetic linkage maps of experimental and natural populations.** *Genomics* 1987, **1**:174-181.
  57. Peterson DG, Tomkins JP, Frisch DA, Wing RA, Paterson AH: **Construction of plant bacterial artificial chromosome (BAC) libraries: An illustrated guide.** *J Agri Genomics* 2000, **5**:1-100.

Publish with **BioMed Central** and every scientist can read your work free of charge

"BioMed Central will be the most significant development for disseminating the results of biomedical research in our lifetime."

Sir Paul Nurse, Cancer Research UK

Your research papers will be:

- available free of charge to the entire biomedical community
- peer reviewed and published immediately upon acceptance
- cited in PubMed and archived on PubMed Central
- yours — you keep the copyright

Submit your manuscript here:  
[http://www.biomedcentral.com/info/publishing\\_adv.asp](http://www.biomedcentral.com/info/publishing_adv.asp)

