

Figures captions

Figure 1

Title: Ring indexing (“pith-to-bark” or “bark-to-pith”) and references (“cambial age”, “calendar year” and “tree age”) for annual rings.

Represented is a wood density scan over tree rings from year 1994 to year 2004.

Figure 2

Title: Annual ring density (RD) according to three references: cambial age (a), calendar year (b) and tree age (c).

Figure 3

Title: Development of variability parameters for wood density (RD) over year based on annual data.

Legend:

- a) heritability (h^2)
- b) additive genetic coefficient of variation (CV_A)
- c) phenotypic coefficient of variation (CV_P)

Figure 4

Title: Development of variability parameters for wood density components (EWD, LWD and LWP) over years based on annual data.

Legend:

- a) heritability (h^2)
- b) additive genetic coefficient of variation (CV_A)
- c) phenotypic coefficient of variation (CV_P)

EWD: earlywood density

LWD: latewood density

LWP: latewood proportion

Figure 5

Title: Development of variability parameters for ring width (RW) and ring density (RD) over years base on cumulative data.

Figure 6

Title: Distribution of calendar years for cambial age 2 (a) and distribution of cambial ages for calendar year 2004 (b) in each test.

Figure 7

Title: Correlation between annual phenotypic coefficient of variation (CV_P) of Rousset and Hermitage for earlywood density (EWD).

Figures

Figure 1

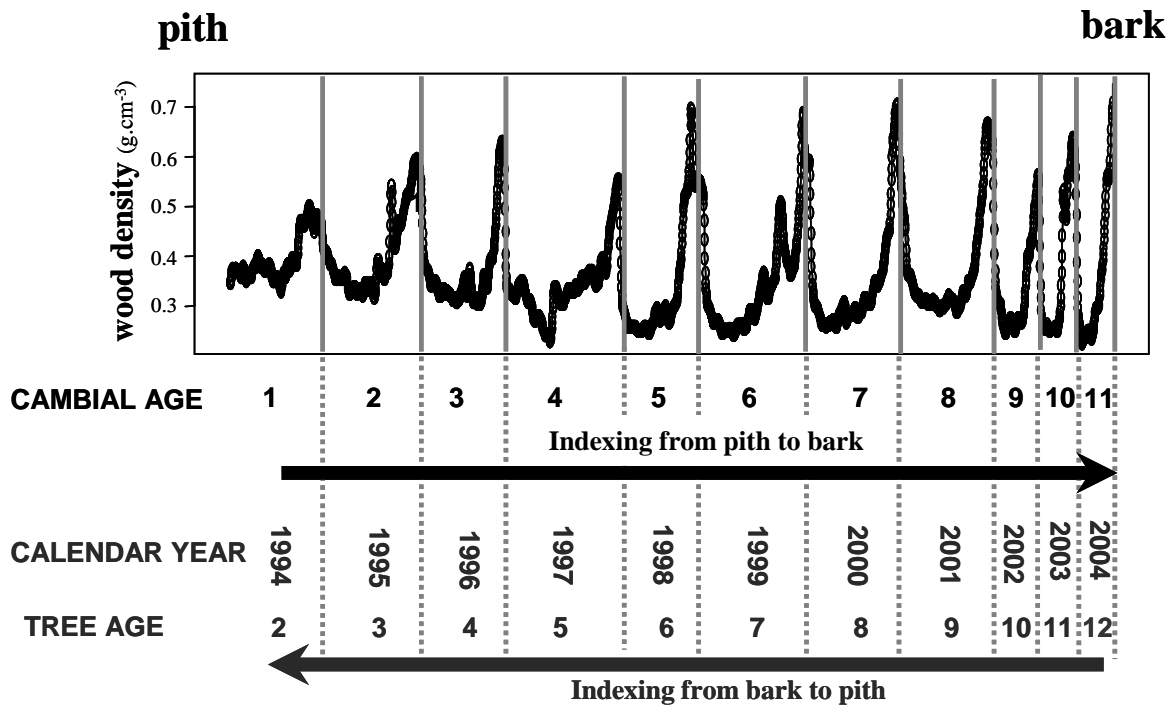


Figure 2

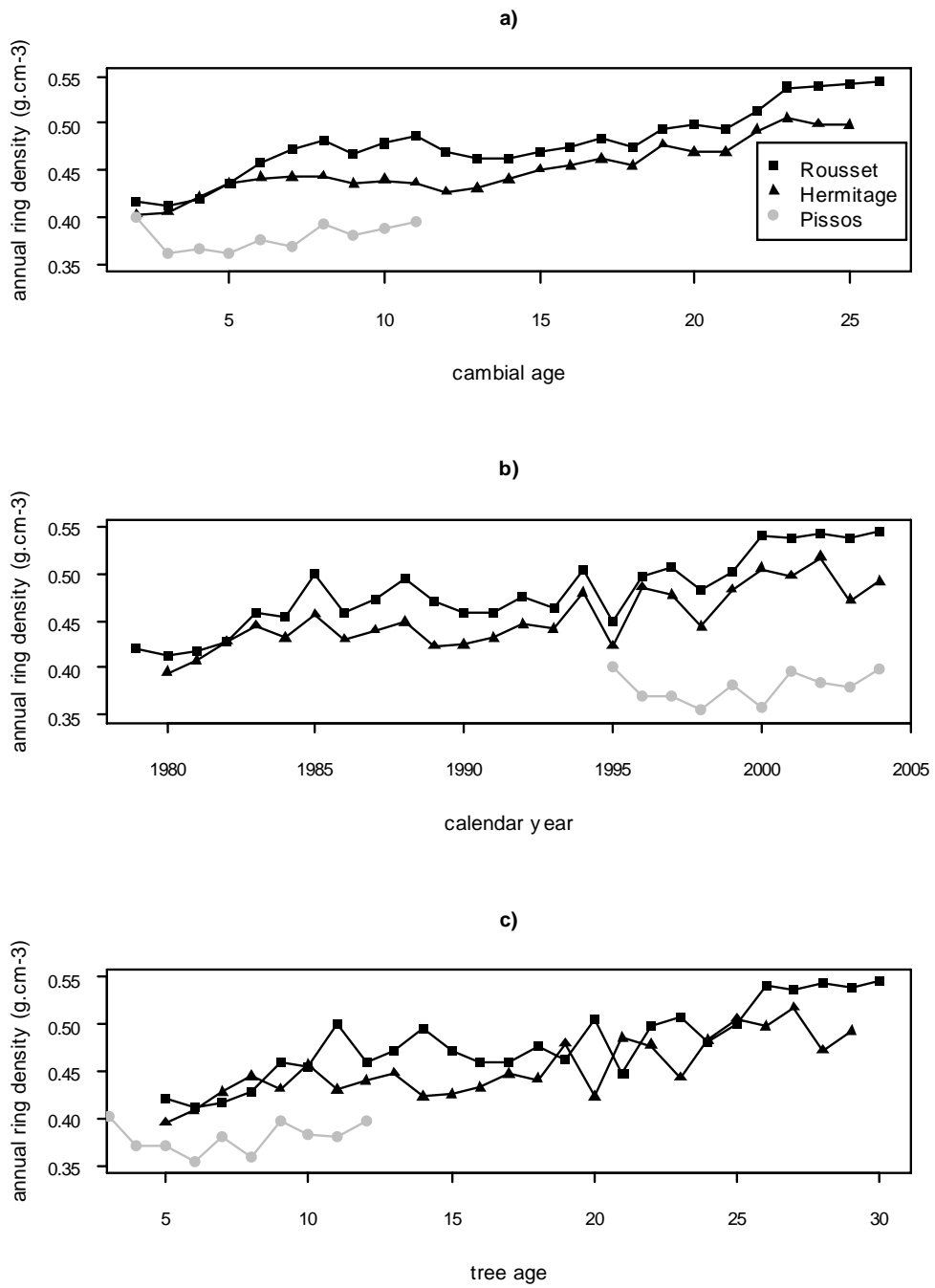


Figure 3

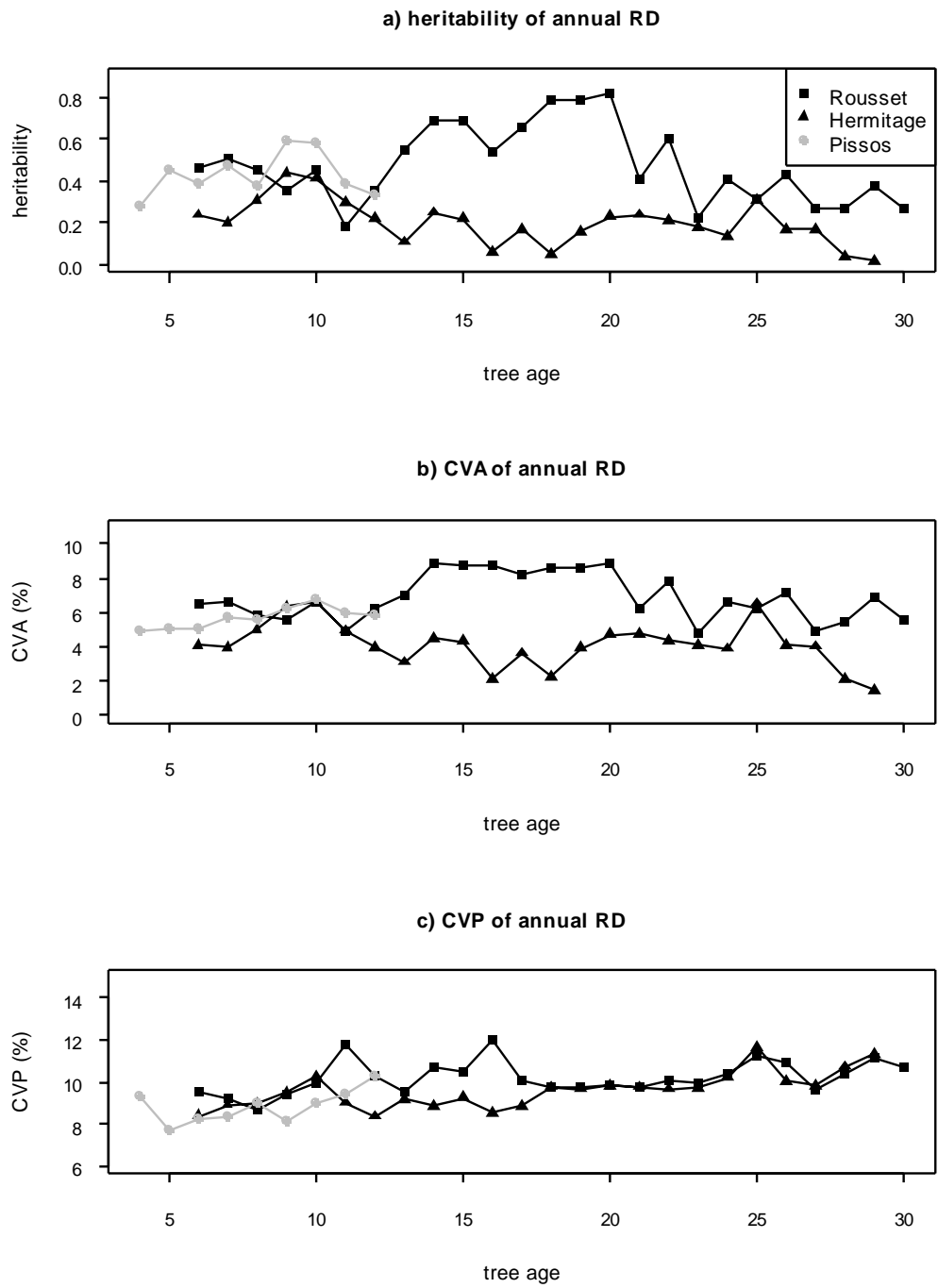
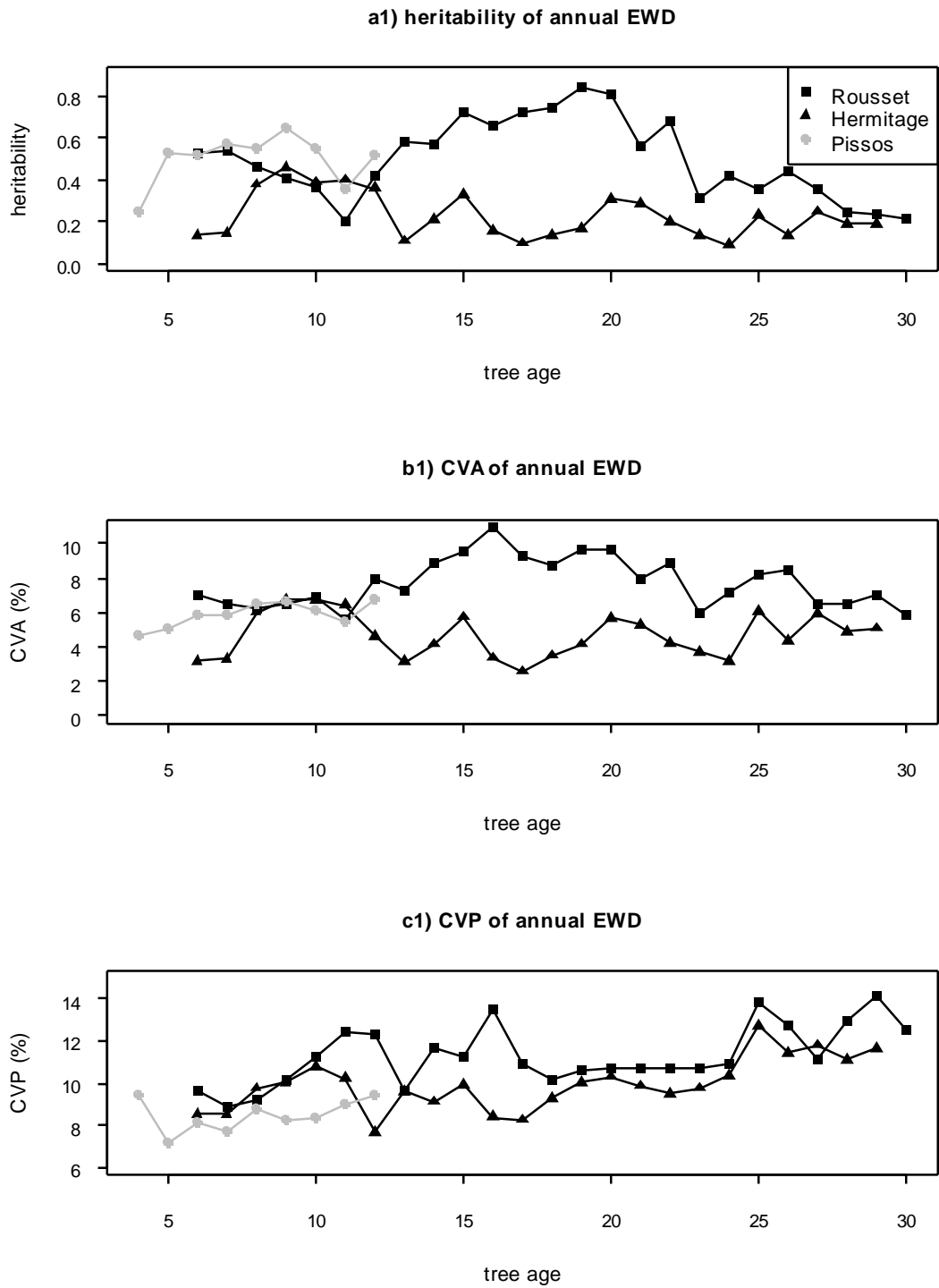
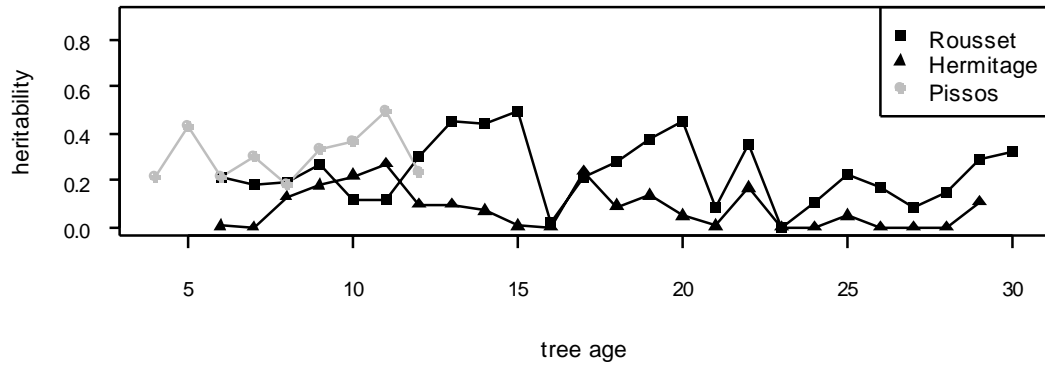


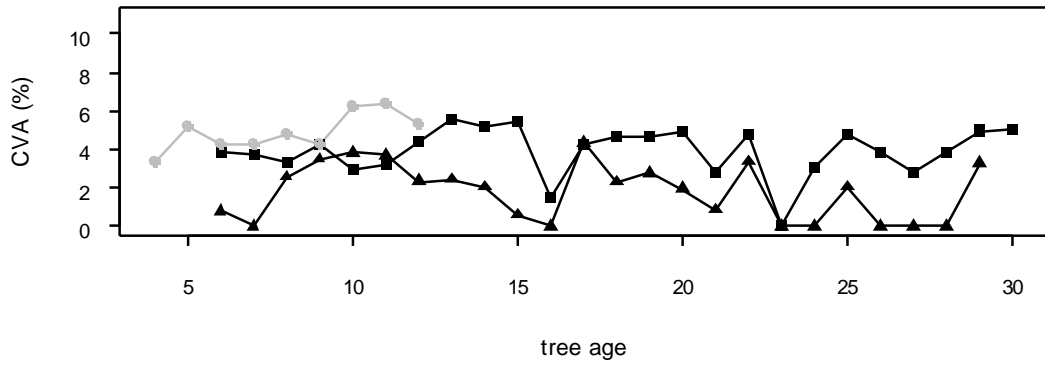
Figure 4



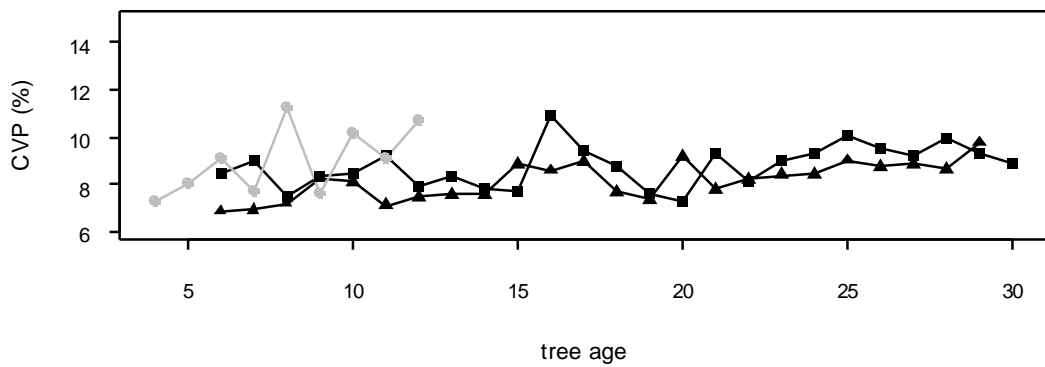
a2) heritability of annual LWD



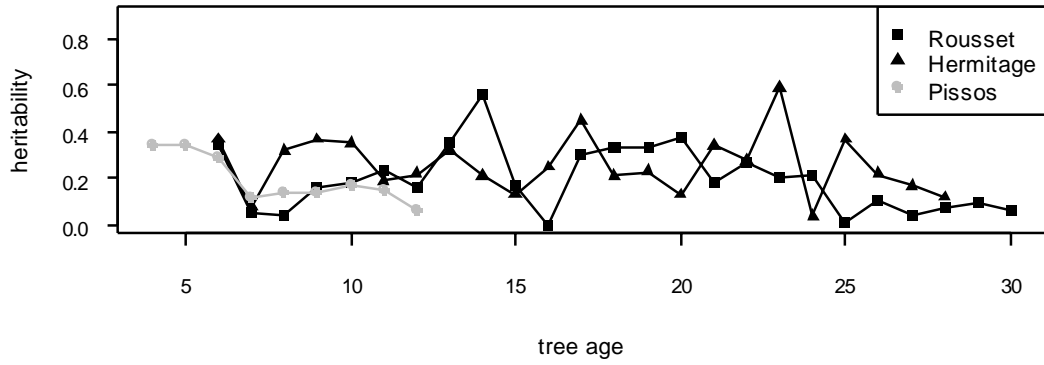
b2) CVA of annual LWD



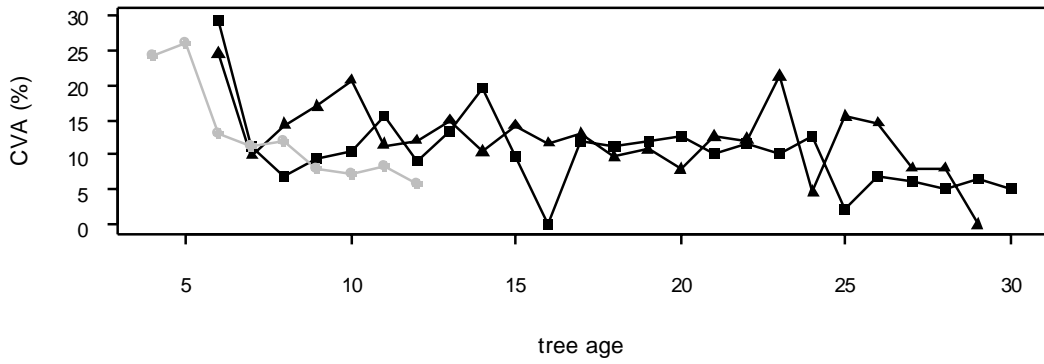
c2) CVP of annual LWD



a3) heritability of annual LWP



b3) CVA of annual LWP



c3) CVP of annual LWP

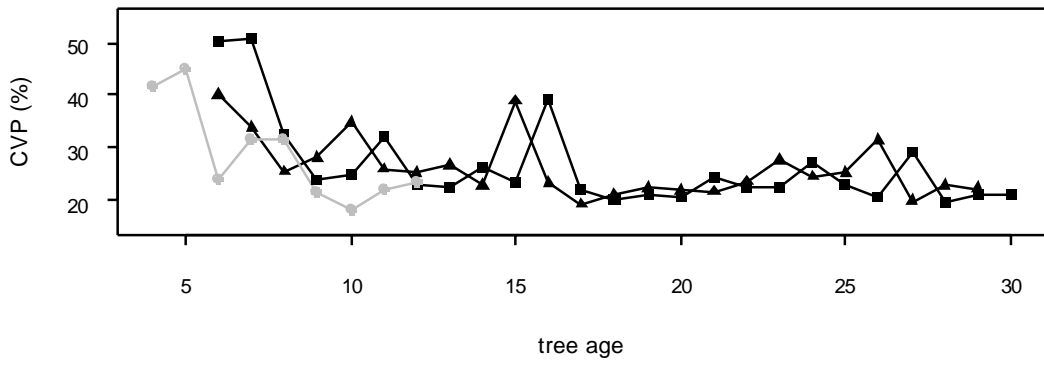


Figure 5

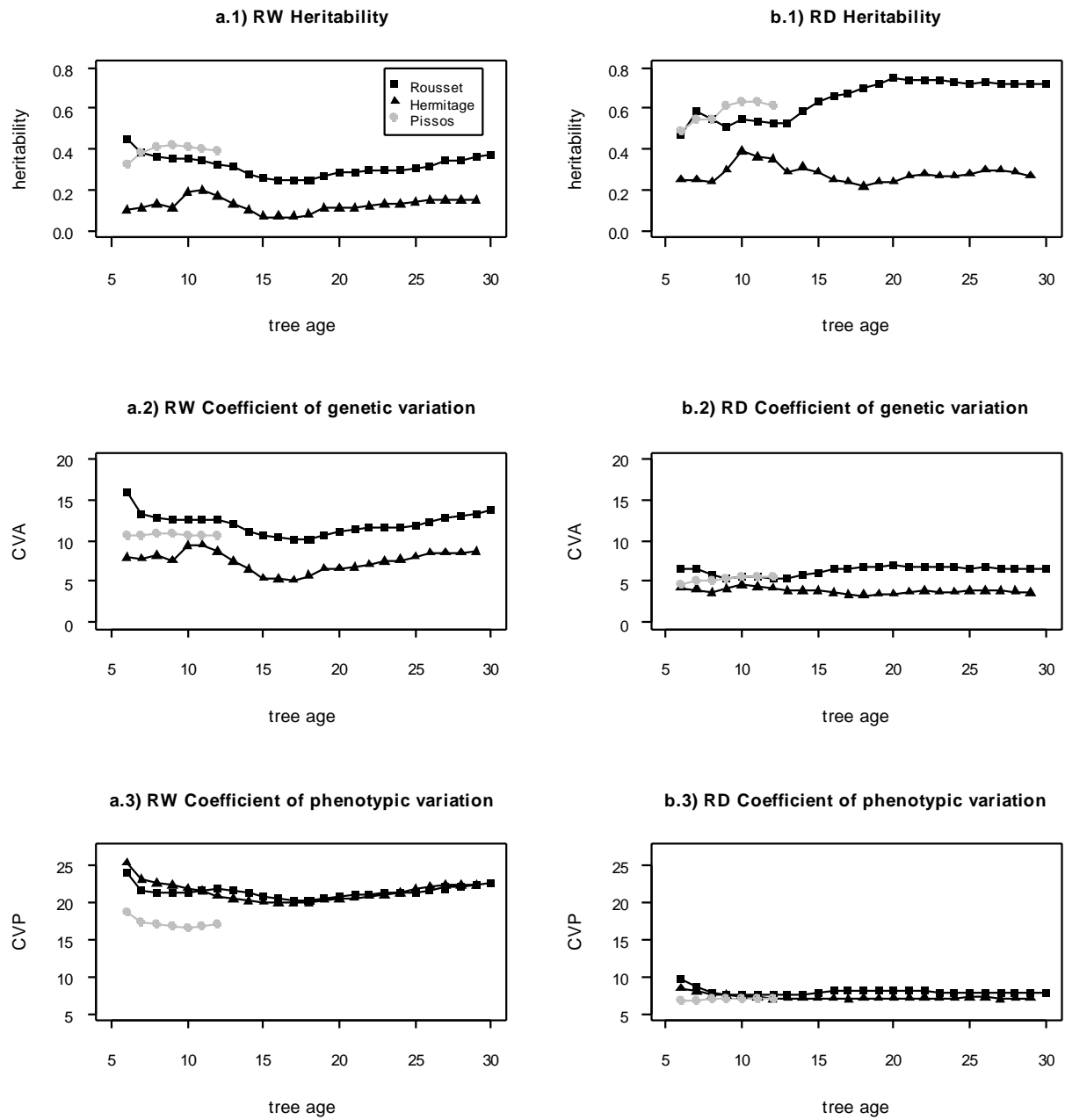
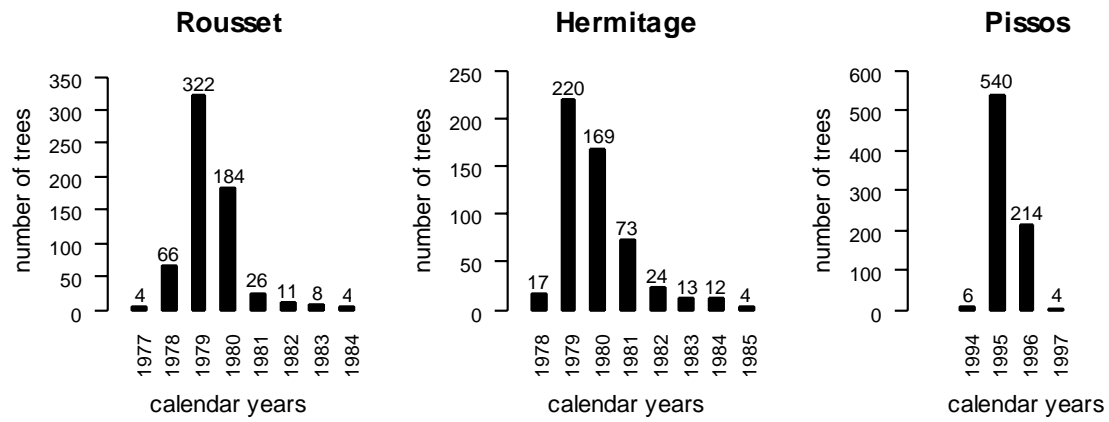


Figure 6

a)



b)

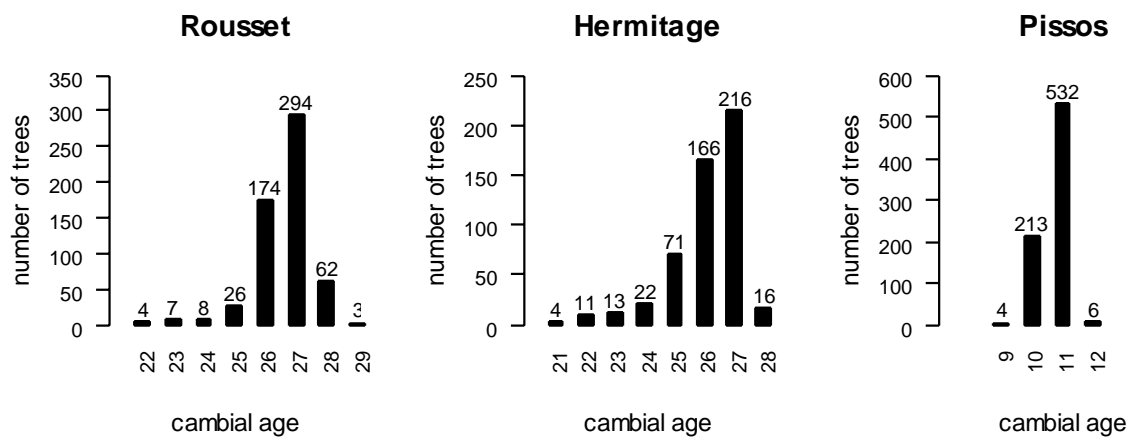


Figure 7

