



**HAL**  
open science

## Modelling of powdery mildew spread over a spatially heterogeneous growing grapevine

Agnes A. Calonnec, Jean-Baptiste Burie, Michel Langlais, Youcef Mammeri

### ► To cite this version:

Agnes A. Calonnec, Jean-Baptiste Burie, Michel Langlais, Youcef Mammeri. Modelling of powdery mildew spread over a spatially heterogeneous growing grapevine. Working Group “Integrated Protection and Production in Viticulture”, Oct 2013, Ascona, Switzerland. 250 p. hal-02739949

**HAL Id: hal-02739949**

**<https://hal.inrae.fr/hal-02739949v1>**

Submitted on 2 Jun 2020

**HAL** is a multi-disciplinary open access archive for the deposit and dissemination of scientific research documents, whether they are published or not. The documents may come from teaching and research institutions in France or abroad, or from public or private research centers.

L'archive ouverte pluridisciplinaire **HAL**, est destinée au dépôt et à la diffusion de documents scientifiques de niveau recherche, publiés ou non, émanant des établissements d'enseignement et de recherche français ou étrangers, des laboratoires publics ou privés.

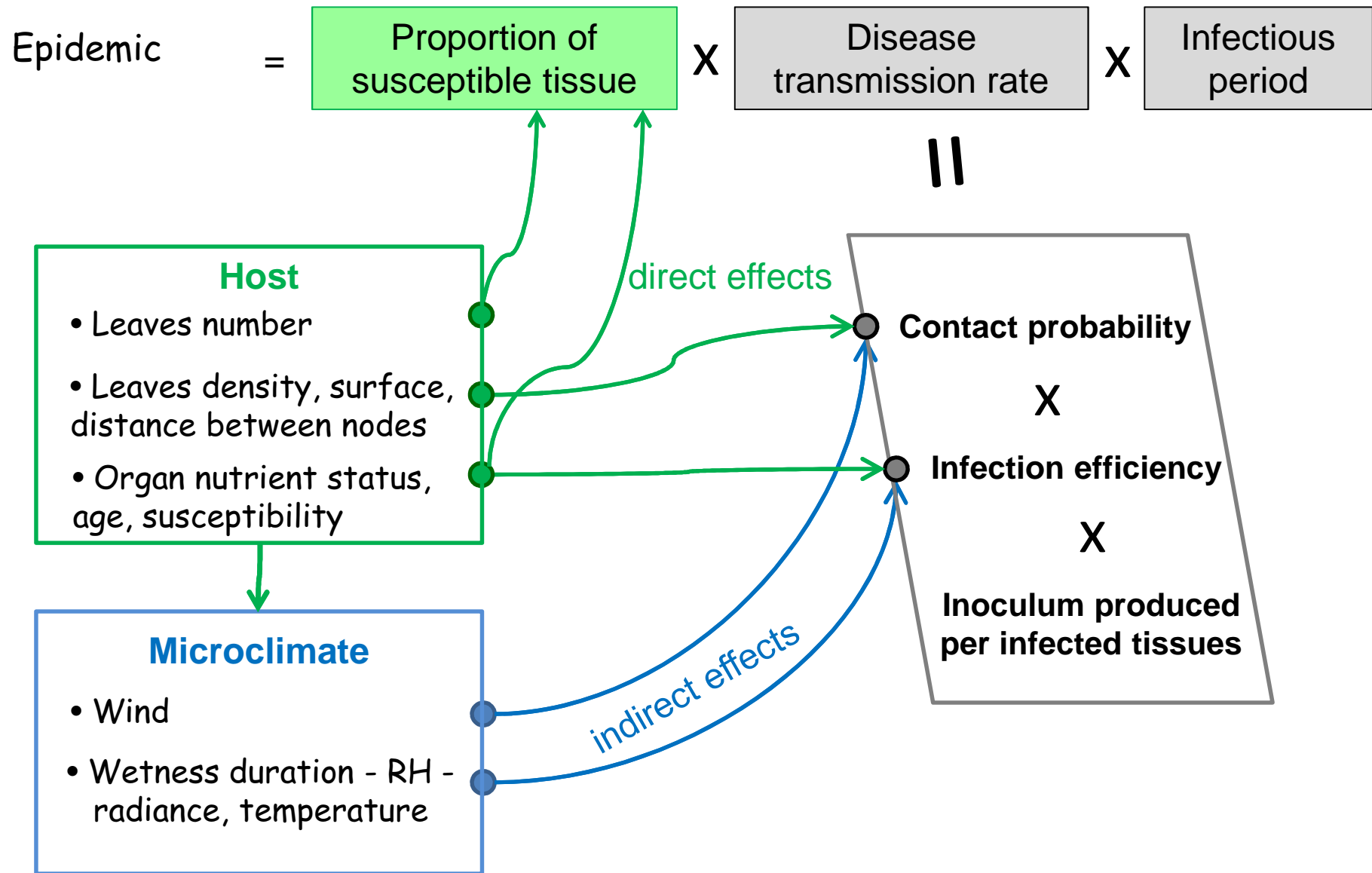


# Modelling of powdery mildew spread over a spatially heterogeneous growing grapevine

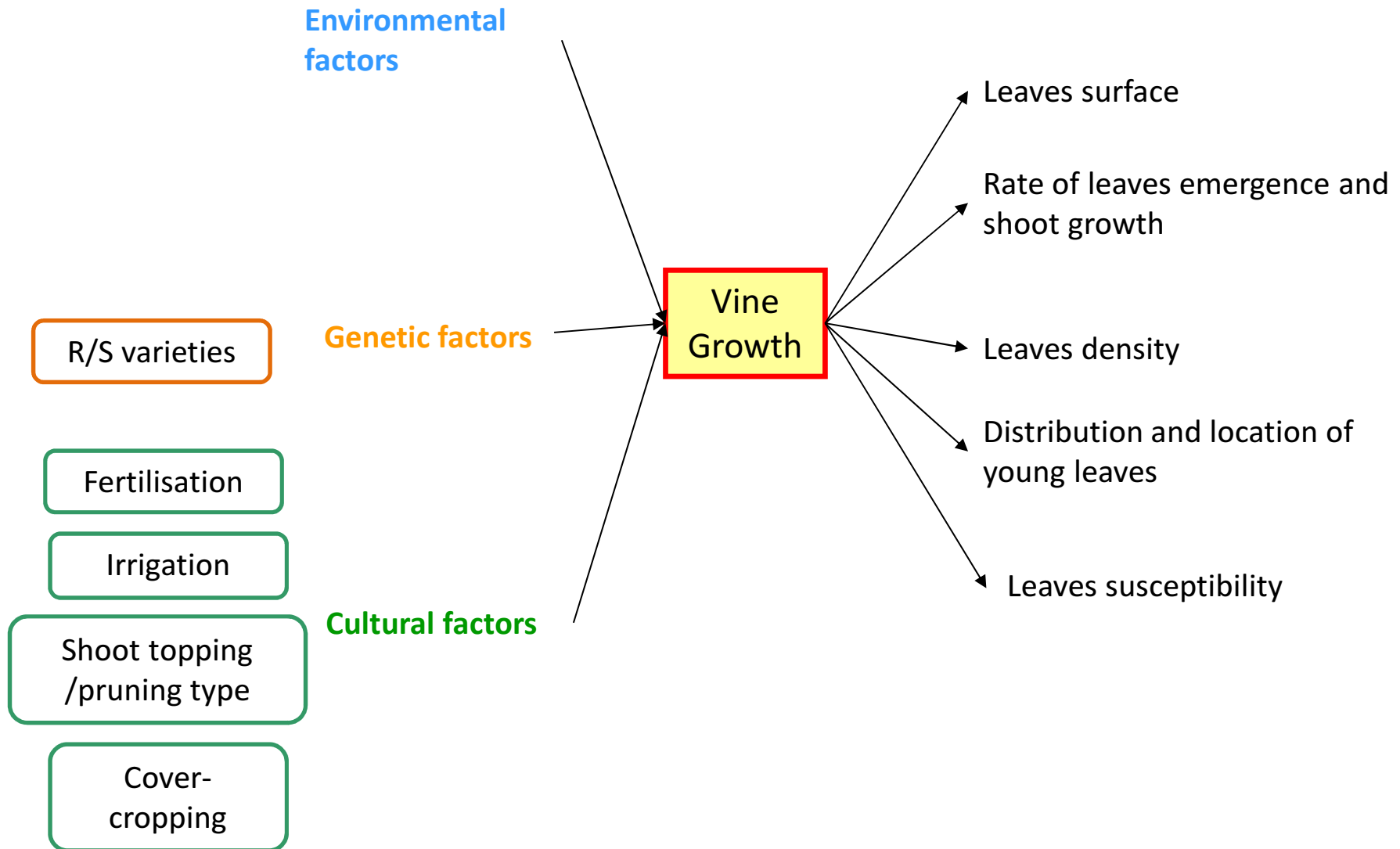
A. Calonnec, J.B. Burie, M. Langlais and Y. Mammeri



# What makes an epidemic?



# What kind of changes in the host can we expect?



# What do we know about grapevine growth - powdery mildew relationships?

- Correlation between vine **vigour** and the powdery mildew dynamics and spread

Calonnec et al., 2009, *Phytopathology* 99:411-422

- The vine growth dynamic impact the disease dynamic **for a partially resistant variety**

Valdes et al., 2011, *Crop protection*, 30:1168-1177

- **Models at the vine scale** are in accordance with those effects

Calonnec et al., 2008, *Plant Pathology*; Burie et al., 2011, *AOB*, 107, 885-95

Can those effects be explored at the plot scale?

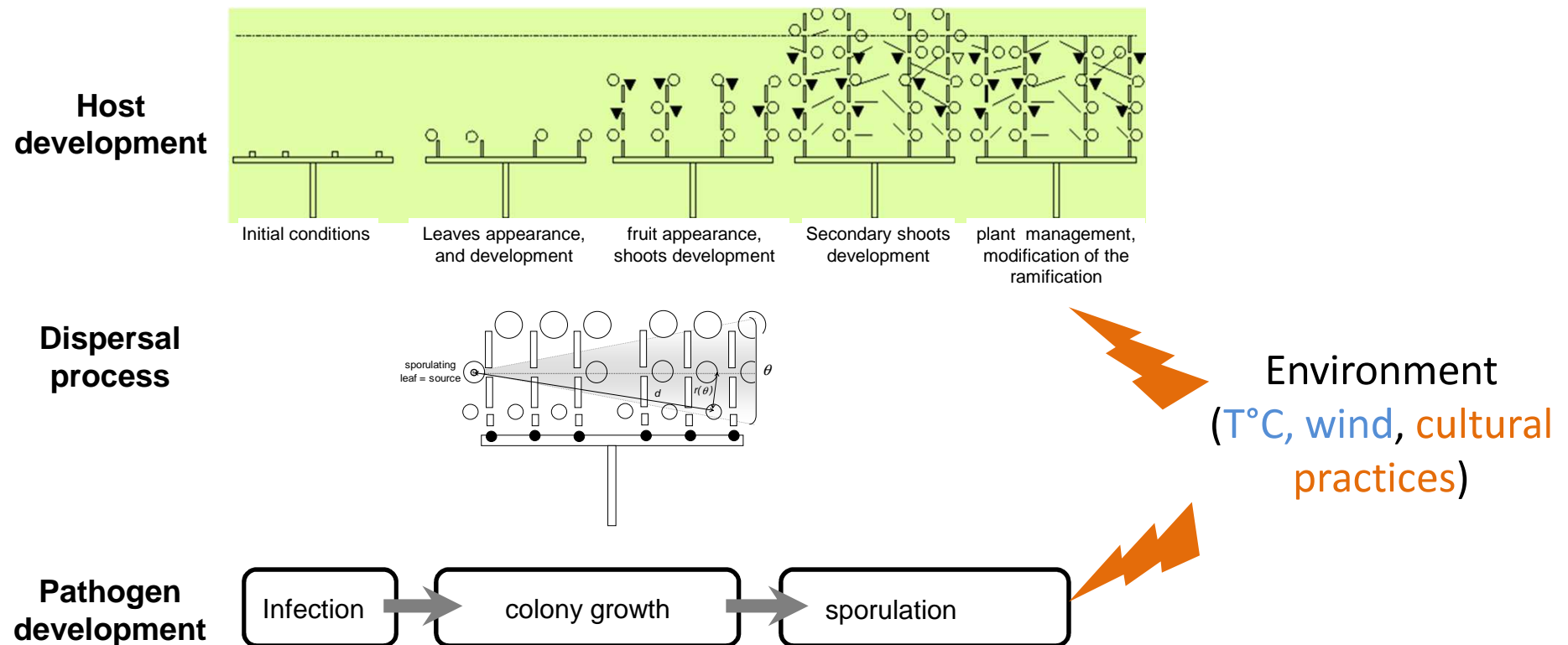
**Can we build a model able to take into account:**

**Vine growth, Evolution of susceptibility, Cultural practices, Fungicide treatments...**

**at the Plot and Vineyard Scales?**

**Can we use this model to test practical disease management?**

# At the vine scale: A deterministic architectural model able to explore the host and pathogen processes involved

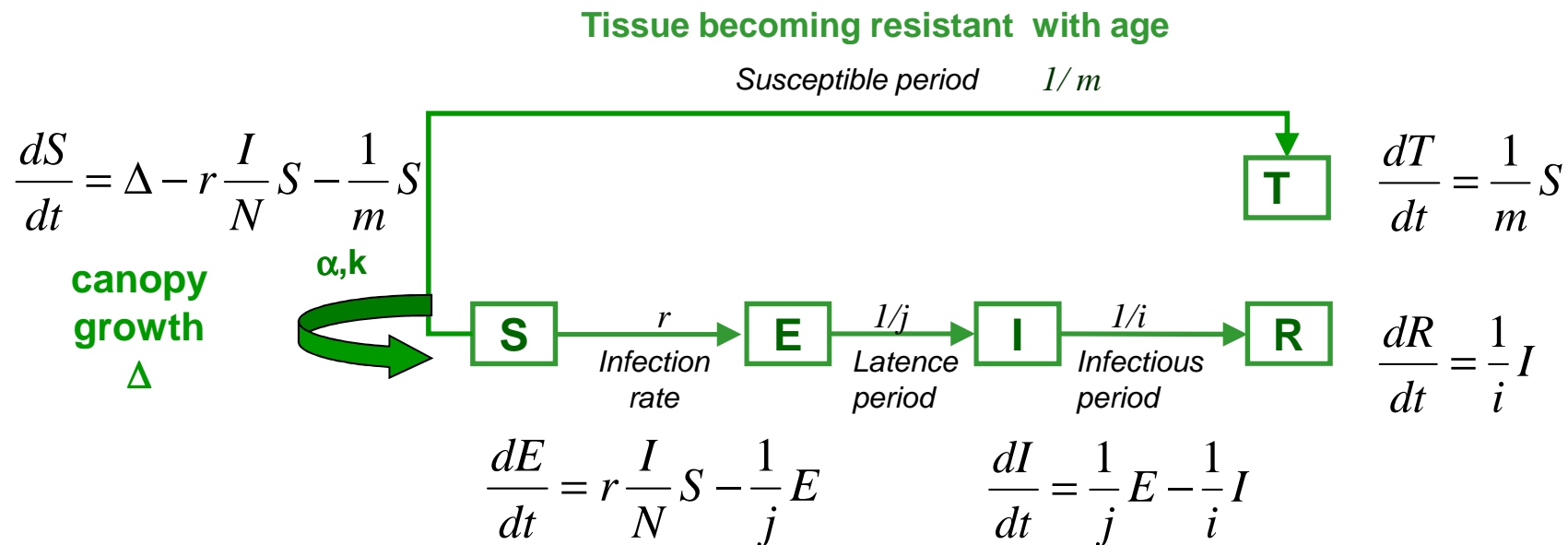


Complex model  
Allow to rank the effects of host development on the disease  
Sensitivity analyses can be cumbersome

# At the vine scale: Mathematical compartmental ODE model

## SEIRT type model

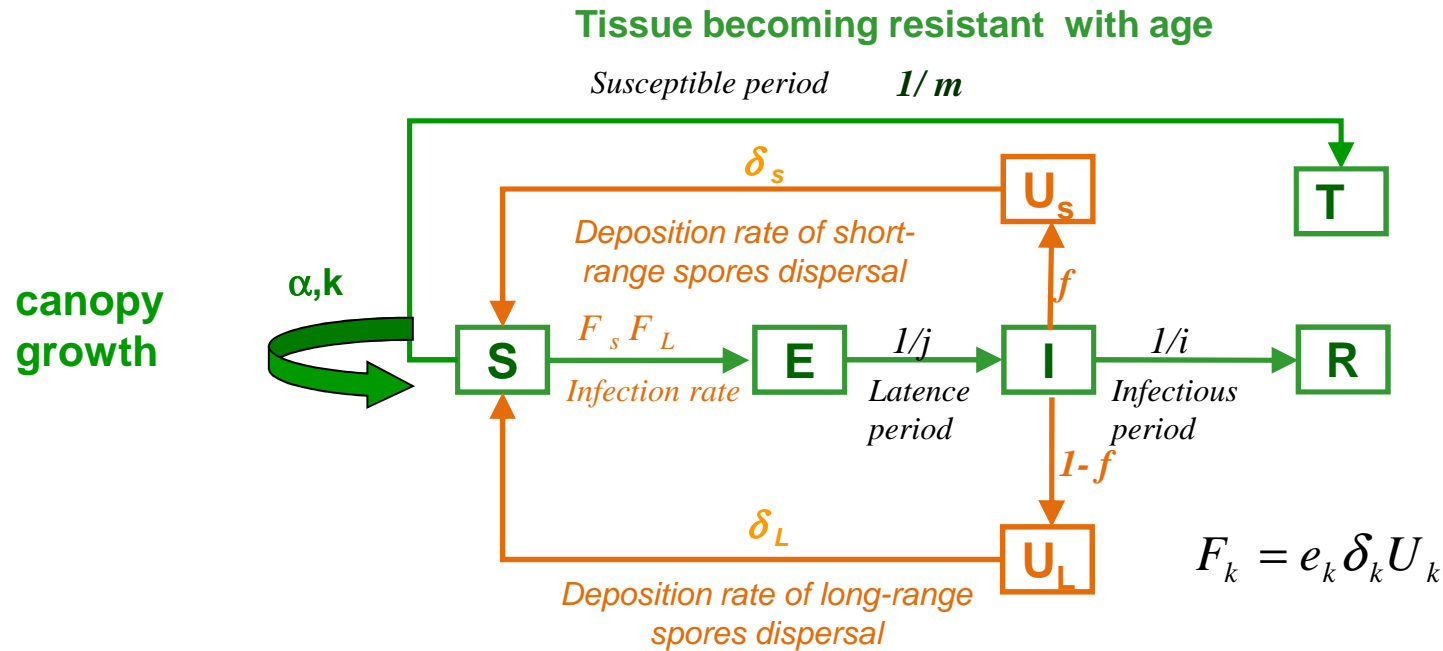
Ordinary Differential Equations describe the Time evolution of the surface area of tissue



**Susceptible Exposed Infectious Removed** on **T** ogenic resistant



# At the plot scale: The ODE model is coupled to Partial Differential Equations model including spore dispersal



$$\frac{d}{dt} E(x,t) = a \left( e_s \delta_s U_s(x,t) + e_L \delta_L U_L(x,t) \right) \frac{S(x,t)}{N(x,t)} - \frac{1}{j} E(x,t)$$

rate of infected tissue is function of the infection efficiency ( $e$ ), deposition rate ( $\delta$ ), density of spores ( $U$ ) coming from short ( $s$ ) or long distance ( $L$ )

Density of spores  $U_S$  and  $U_L$  in the air follows advection-reaction-diffusion equations, giving the amount of spores dispersed at **short vs long** distance

$\gamma$ : rate of spores produced /infectious unit/day

$f$ : proportion of spores dispersed at short distance

$I$ : amount of infectious tissue

$$\frac{\partial U_S(x,t)}{\partial t} - \nabla \cdot (D_S \nabla U_S(x,t)) + \delta_S U_S(x,t) = \gamma f I(x,t)$$

$$\frac{\partial U_L(x,t)}{\partial t} - \nabla \cdot (D_L \nabla U_L(x,t)) + V(x,t) \cdot \nabla U_L(x,t) + \delta_L U_L(x,t) = \gamma (1-f) I(x,t)$$

$V$ : wind velocity

Simpler models that do not take into account the climate but taking into account the plant growth and to some extent the canopy structure

r I

$$\frac{d}{dt} S(x,t) = \Delta - \overbrace{a(e_S \delta_S U_S(x,t) + e_L \delta_L U_L(x,t))}^{r I} \frac{S(x,t)}{N(x,t)} - \frac{1}{m} S$$

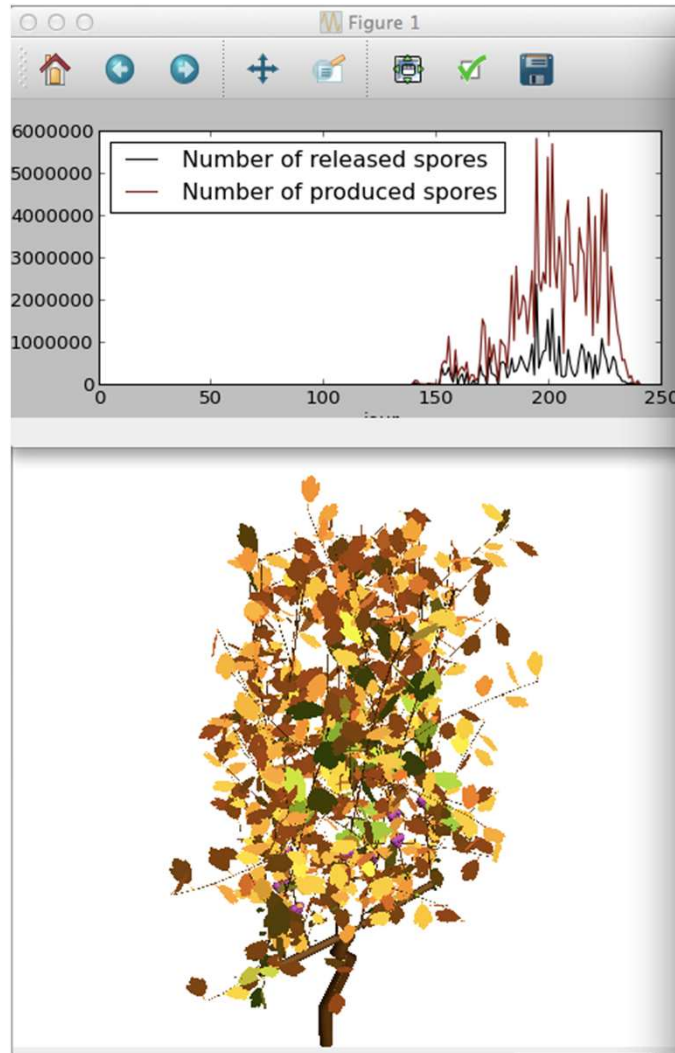
$$\frac{d}{dt} E(x,t) = a(e_S \delta_S U_S(x,t) + e_L \delta_L U_L(x,t)) \frac{S(x,t)}{N(x,t)} - \frac{1}{j} E(x,t)$$

$$\frac{d}{dt} I(x,t) = \frac{1}{j} E(x,t) - \frac{1}{i} I(x,t)$$

$$\frac{d}{dt} R(x,t) = \frac{1}{i} I(x,t)$$

$$\frac{d}{dt} T(x,t) = \frac{1}{m} S(x,t)$$

**The PDE-ODE model :** takes into account plant growth and the canopy structure by using the output of the process based model for calibration

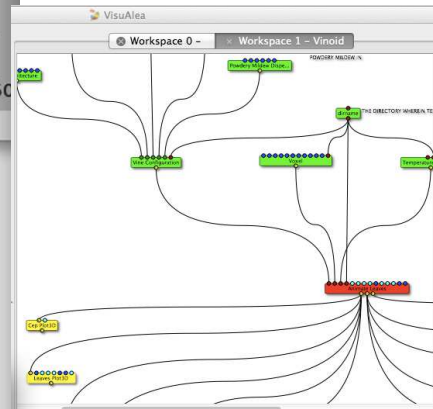


**Architectural model :**

$\alpha, k$  parameters of canopy growth

$\gamma$  rate of spores produced /infectious unit

$S$  evolution of susceptible tissue



**Experimental data at plot scale :**

$f$  proportion of short range dispersal (0.8)

$e_s, e_L$  infection efficiency of short range spores (0.07 %) vs long range (0.06 %)

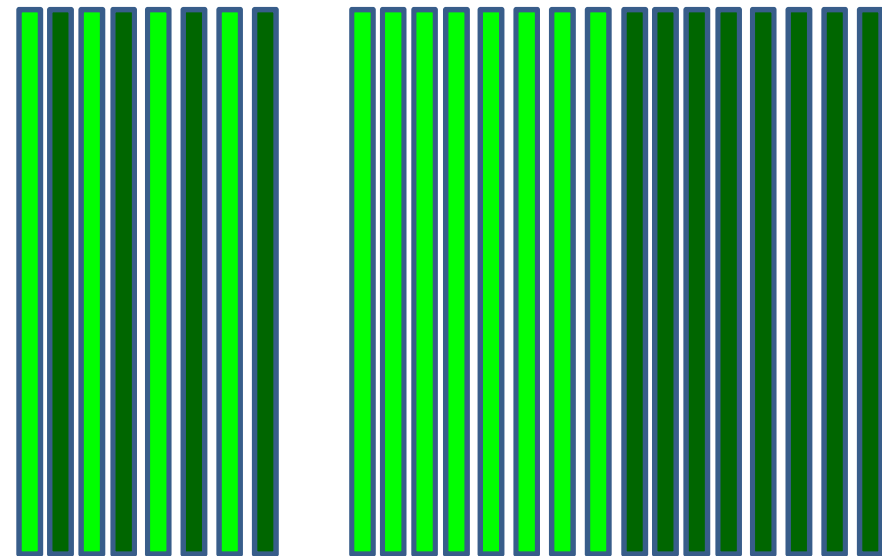
**Literature :**

$\delta$  deposition rates  $50 \text{ days}^{-1}$

$\sigma_L$  (20 m),  $D_L$  ( $20000 \text{ m}^2\text{day}^{-1}$ ), diffusion coefficients

# The PDE-ODE model used to explore some practical questions

- Do heterogeneities of phenology between adjoined varieties/plots can favor the disease?
- Can the management of plant vigour help having a better control of the disease?
- Can varietal mixture with various levels of resistance reduce the disease spread?
- What is the better timing to apply a fungicide?



rows

patches

# Various simulations performed

Effect on disease spread of :

**Plant growth**



high vigour  
vs  
low vigour

1 plot = 6150 vines  
50 rows of length 98.4 m

**Plant-Pathogen Synchronism**



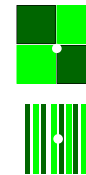
early budbreak - late budbreak  
primary inoculum early or late side

**Plant growth Heterogeneities**



high vigour - low vigour  
in patches or  
in rows

**Heterogeneities of plant Susceptibility**



susceptible variety - resistant variety  
in patches or  
in rows

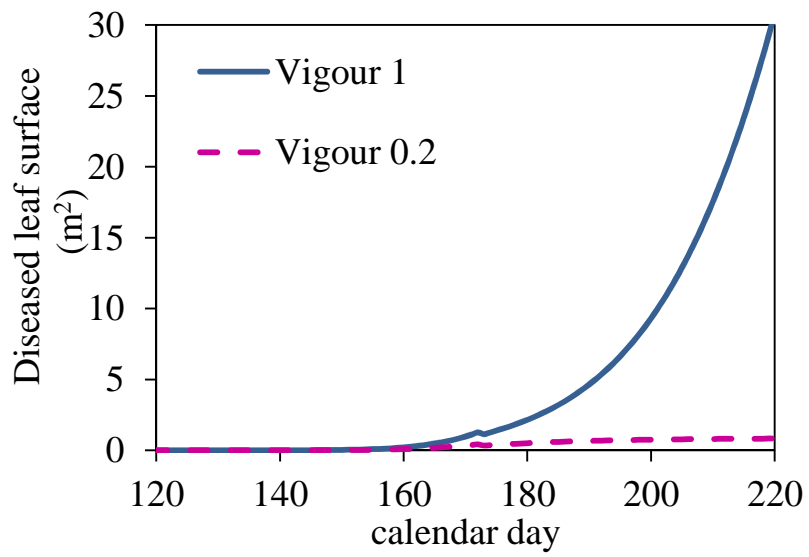
**Disease control with Fungicide**



fungicide at  
flowering or  
at shoot topping

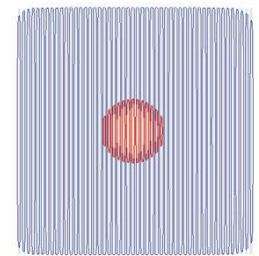
# Effect on disease spread of plant growth and fungicide treatments

high vigour  
 vs  
 low vigour

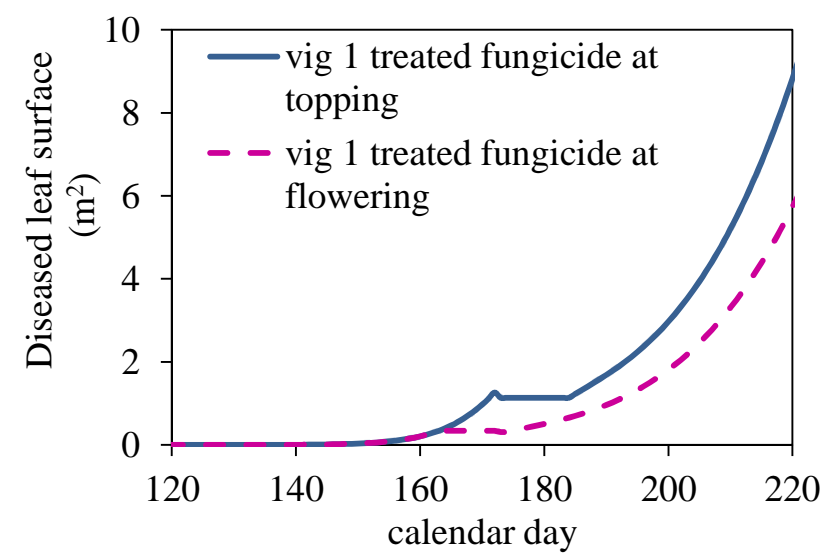


Disease reduction  
 vig 0.2 / vig 1  
 65% at shoot topping  
 97% at day 220

disease spread



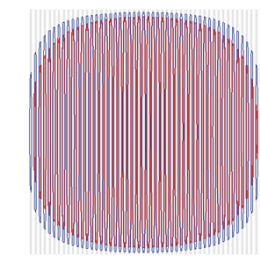
fungicide at flowering or at shoot topping



Disease reduction  
 fungicide flowering / Untreated  
 69% at shoot topping  
 81% at day 220

Disease reduction fungicide  
 shoot topping / Untreated  
 71% at day 220

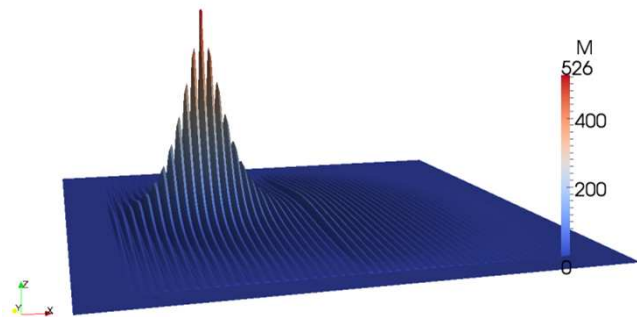
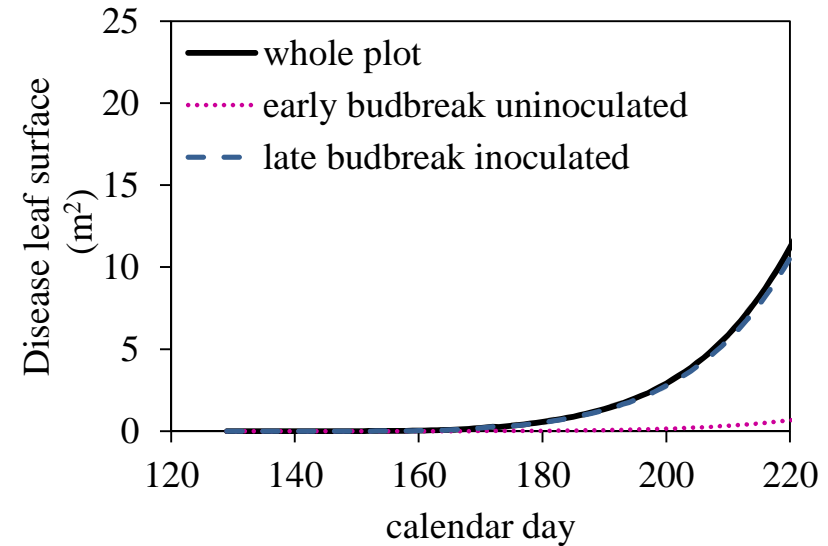
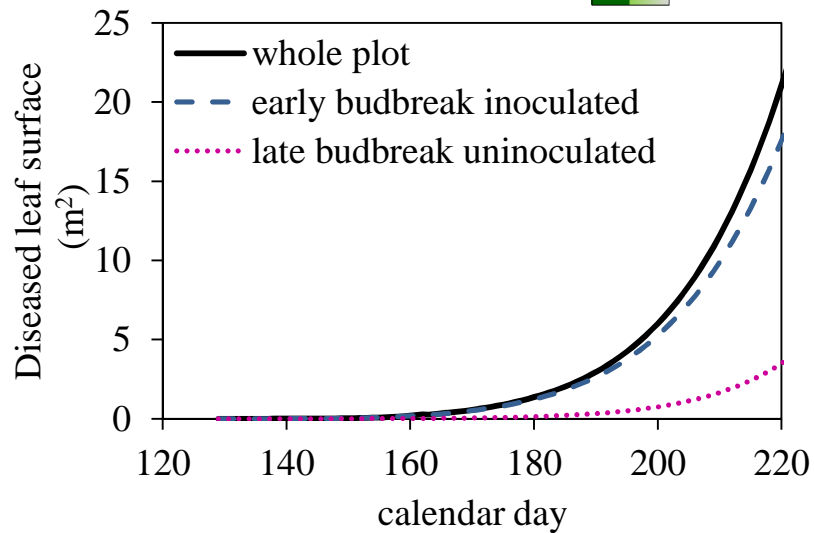
disease spread



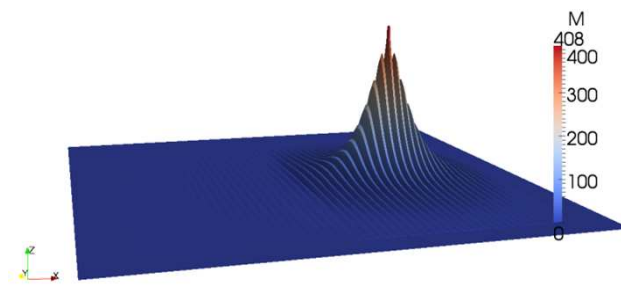
# Effect on disease spread of Plant-Pathogen Synchronism



early budbreak - late budbreak  
primary inoculum early or late side



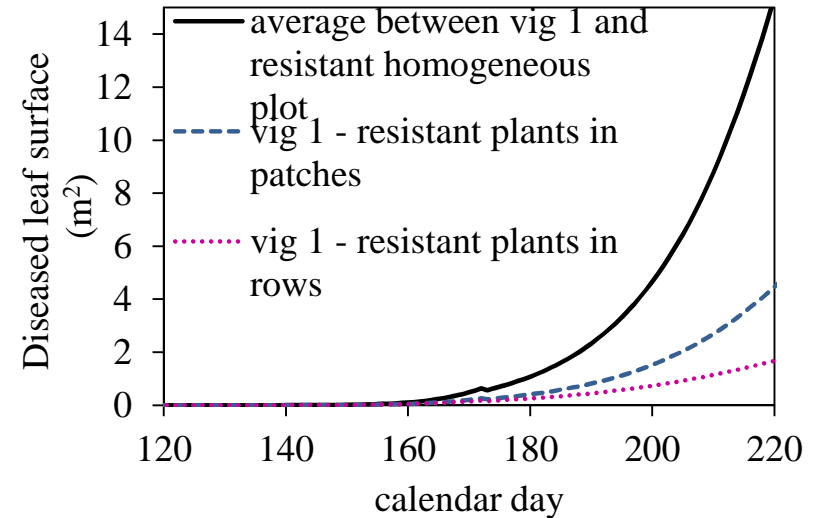
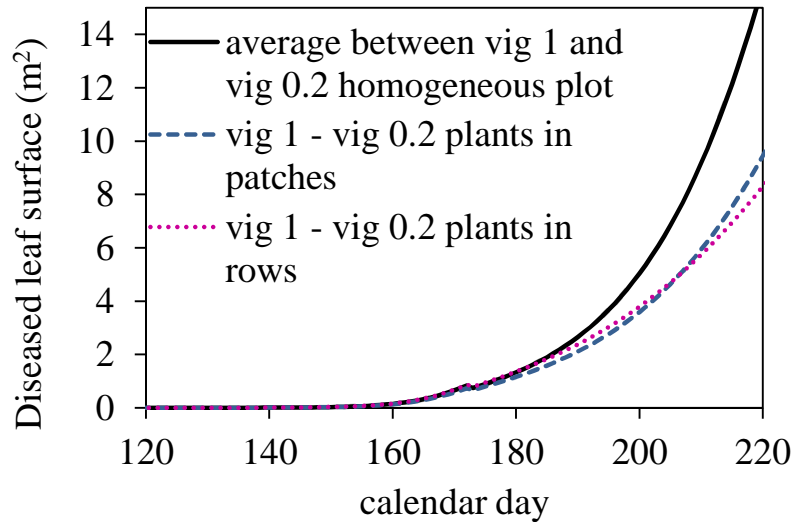
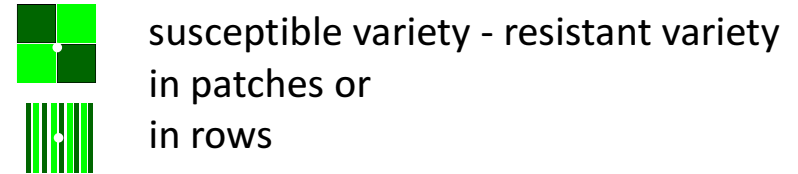
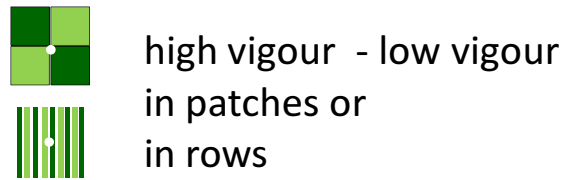
Disease reduction  
Early bud break side inoculated  
44% at shoot topping  
31% at day 220



Disease reduction  
Late bud break side inoculated  
79% at shoot topping  
64% at day 220



# Effect of plant growth or plant susceptibilities heterogeneities



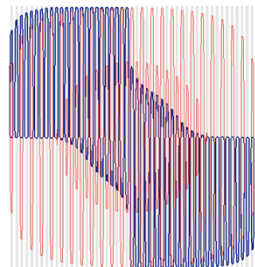
Disease reduction  
heterogeneities for **plant growth**

**47% rows**  
**40% patches**  
at day 220

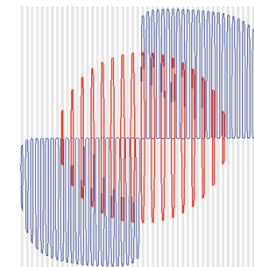
Disease reduction  
heterogeneities for **plant susceptibility**

**89% rows**  
**70% patches**  
at day 220

disease  
spread



disease  
spread



# Conclusion

- We developed a model able to simulate the dispersal of an airborne pathogen (powdery mildew) and the disease on a highly anthropized crop (vine) at a **plot scale**.
- A promising tool to explore the **efficiency of innovative disease control strategies** based on plant and/or crop structure management under **low pesticide use**.
- The efficiencies of decreasing disease spread differs at shoot topping and at the end of the season, to consider for bunch damages !
- R/S varietal mixture in rows (89% disease reduction)  
R/S varietal mixture in patches (70% )  
Heterogeneities in plot phenology (64%) (late bud break)  
Heterogeneities for growth in rows (47%) (alternate cover-cropping?)  
Heterogeneities for growth in patches (31%)
- Sensitivity analysis for parameters link to dispersion has still to be done, and combination of innovative strategies