



HAL
open science

Grapevine trunk diseases : a true economical difficulty

Marielle Adrian, Christophe Bertsch, Sophie Trouvelot, Philippe Larignon

► To cite this version:

Marielle Adrian, Christophe Bertsch, Sophie Trouvelot, Philippe Larignon. Grapevine trunk diseases : a true economical difficulty. Congrès international Enometrics XXIII, Institut Universitaire de la Vigne et du Vin "Jules Guyot" (IUVV). FRA., May 2016, Colmar, France. hal-02740067

HAL Id: hal-02740067

<https://hal.inrae.fr/hal-02740067>

Submitted on 2 Jun 2020

HAL is a multi-disciplinary open access archive for the deposit and dissemination of scientific research documents, whether they are published or not. The documents may come from teaching and research institutions in France or abroad, or from public or private research centers.

L'archive ouverte pluridisciplinaire **HAL**, est destinée au dépôt et à la diffusion de documents scientifiques de niveau recherche, publiés ou non, émanant des établissements d'enseignement et de recherche français ou étrangers, des laboratoires publics ou privés.



Grapevine Trunk Diseases: a true economical difficulty

M. Adrian¹ - C. Bertsch², S. Trouvelot¹, P Larignon³

¹UMR 1347 Agroécologie - Pôle Mécanismes et Gestion des Interactions Plantes Microorganismes ERL CNRS
6300 Groupe Résistance induite, Dijon, France

²Laboratoire Vigne Biotechnologies et Environnement EA-3991 - Université de Haute-Alsace, Colmar, France

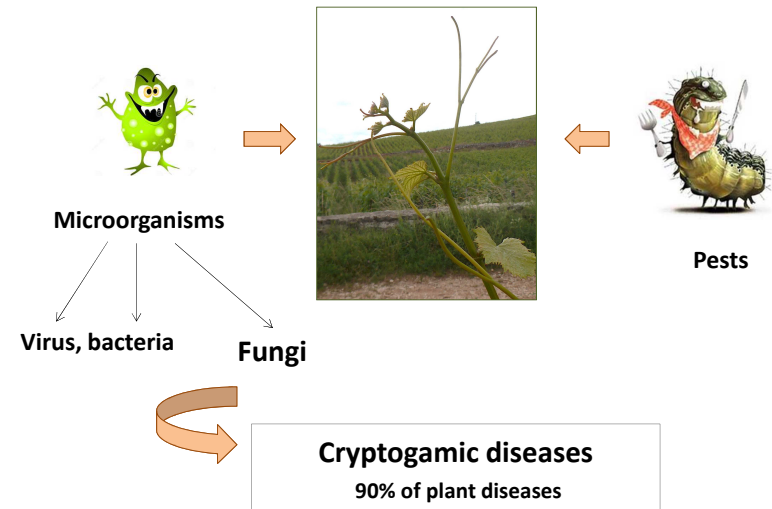
³IFV Pôle Rhône-Méditerranée, Rodhlan, France



Enometrics XXIII - Colmar – 25-28 mai 2016



Susceptibility to pathogens



Enometrics XXIII - Colmar – 25-28 mai 2016

Grapevine cryptogamic diseases

Downy mildew



Powdery mildew



Black-rot



Gray mold



...and grapevine trunk
diseases (GTD):

Eutypa dieback, Esca and
Botryosphaeria dieback

Enometrics XXIII - Colmar – 25-28 mai 2016

Eutypa dieback



Enometrics XXIII - Colmar – 25-28 mai 2016

Esca



Enometrics XXIII - Colmar – 25-28 mai 2016

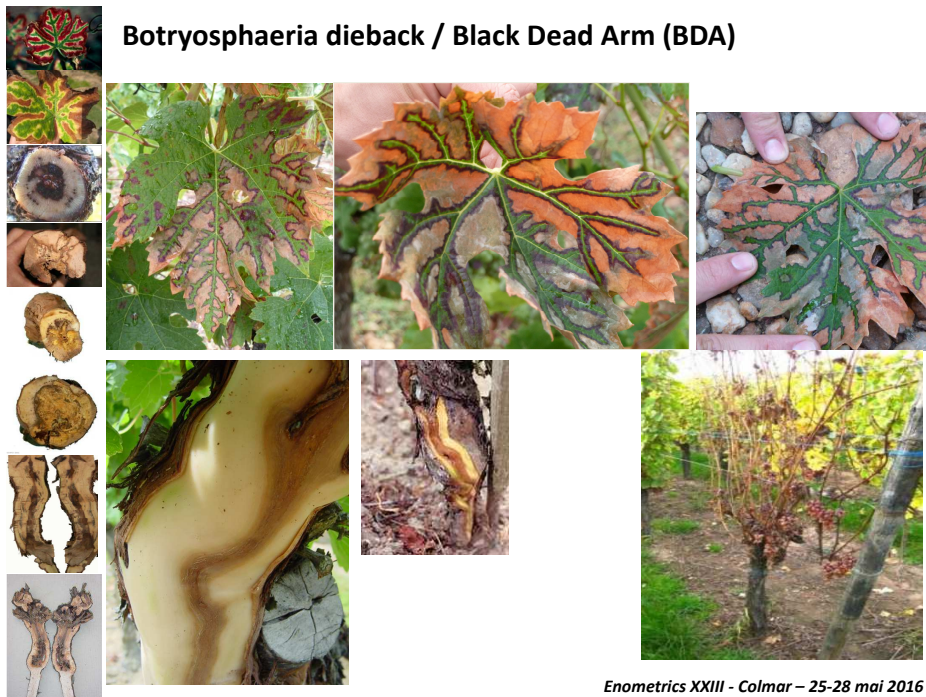


Apoplexy



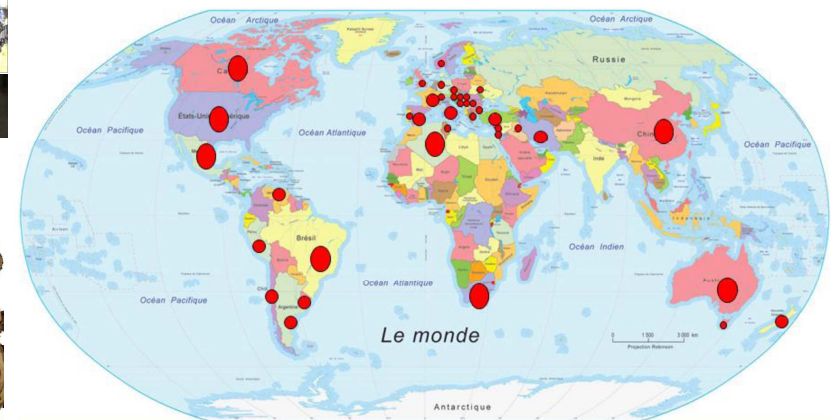
Enometrics XXIII - Colmar – 25-28 mai 2016

Botryosphaeria dieback / Black Dead Arm (BDA)



Enometrics XXIII - Colmar – 25-28 mai 2016

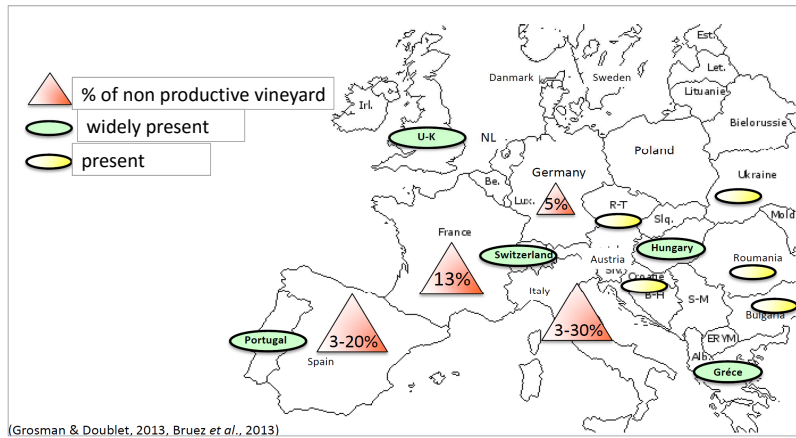
A worldwide problem



Enometrics XXIII - Colmar – 25-28 mai 2016



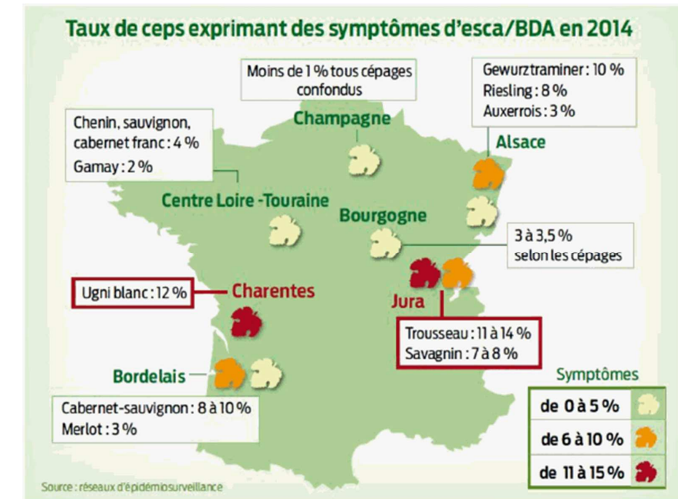
Impact in Europe



Enometrics XXIII - Colmar – 25-28 mai 2016



Vineyards differentially affected in France

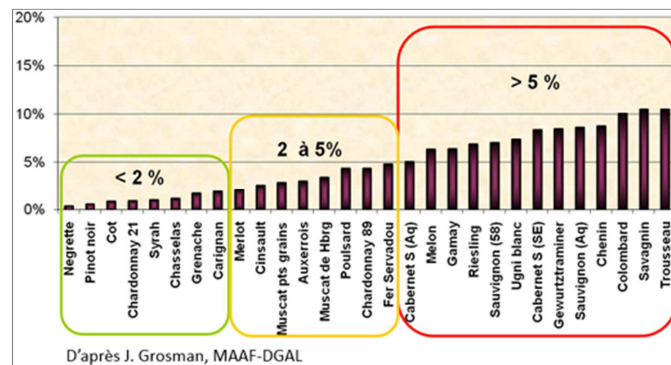


Enometrics XXIII - Colmar – 25-28 mai 2016



Variety-dependent symptom expression

Mean percentage of Esca symptom expression

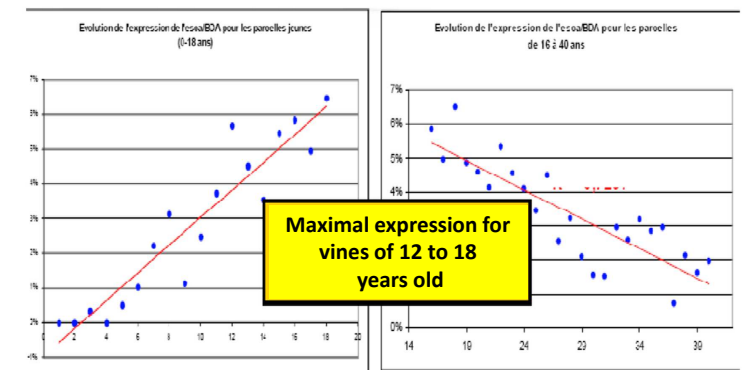


Enometrics XXIII - Colmar – 25-28 mai 2016



Age-dependent symptom expression...

... a problem for « old vines » vineyards



(J. Grosman, DGAL) 7

Enometrics XXIII - Colmar – 25-28 mai 2016

A common issue: premature grapevine death



Photo F Dal - Sicavac

Enometrics XXIII - Colmar – 25-28 mai 2016



Consequences:

- Decreased vineyard longevity
- Yield losses
- Heterogeneity in the vineyard



Affected vineyard productivity and increasing production costs

Enometrics XXIII - Colmar – 25-28 mai 2016



Economic impact: an estimation

Yield losses:

2014: 4.6 hl / ha : 900 millions to 1 billion euros

9 hl / ha in 2020 !

(BIPE, http://www.franceagrimer.fr/fam/content/download/40019/371598/file/CNIV_HS%20N3_v1.pdf)

Enometrics XXIII - Colmar – 25-28 mai 2016

Complantation: replacement of dead grapevines

In Burgundy: at least 2 millions € / year for replacements

(G. Morvan, <http://www.yonne.chambagri.fr/gerer-mon-exploitation/l experimentation/maladies-du-bois-de-la-vigne.html>)



Photo F Dal - Sicavac

Enometrics XXIII - Colmar – 25-28 mai 2016



Strategy of protection: a deadlock situation...



- sodium arsenite: banned in 2001
- no alternative fungicide available

Enometrics XXIII - Colmar – 25-28 mai 2016



Alternative solutions under investigation ...

- at different scales: laboratories, vine nurseries, vineyards
- chemical and biological solutions (biological control)
- curative technical practices: regrafting and “curetage”

Enometrics XXIII - Colmar – 25-28 mai 2016



Regrafting



Photo F Dal - Sicavac

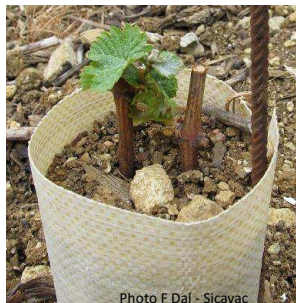


Photo F Dal - Sicavac



Photo F Dal - Sicavac

Enometrics XXIII - Colmar – 25-28 mai 2016

Curetage



Photo F Dal - Sicavac



« dead wood » removal

Enometrics XXIII - Colmar – 25-28 mai 2016

Comparative costs

For one plant	Complantation	Regrafting	Curetage
Removal of the dead vine	0,52 €	0,52 €	
Hole digging	0,96 €		
plantation	0,52 €		
Grafting		1,05 €	
curetage			2,5 €
cost of the vine plant	1,2 - 1,8 €	0	
protection	0,4 - 0,7 €	0,4 - 0,7 €	
fertilization	0,3 - 0,5 €	0	
1st year plant care	0,8 €	0,2 €	
Total	4,7 - 5,8 €	2,17 - 2,47 €	2,5 €

F. Dal SICAVAC
CENTRE-LOIRE

Enometrics XXIII - Colmar – 25-28 mai 2016



A global awareness

International Wine Office (OIV)

« the most destructive diseases of grapevine of the past three decades and are of rapidly growing concern in all wine producing countries».

Enometrics XXIII - Colmar – 25-28 mai 2016

International research on GTD

European projects:



Toward a sustainable viticulture: Improved grapevine productivity and tolerance to abiotic and biotic stresses by combining resistant cultivars and beneficial microorganisms (VitiSmart)

9 countries (BG, CH, FR, GR, IT, NL, PL, SP, UK)



Sustainable control of grapevine trunk diseases, projet FA 1303

21 countries (AT, BG, CH, CZ, DE, GR, ES, FR, HR, HU, IL, IT, MT, NL, PL, PT, RO, SE, SI, TR, UK)



Winetwork : Network for the exchange and transfer of innovative knowledge between European wine-growing regions to increase the productivity and sustainability of the sector

7 countries (CR, ES, FR, GR, HR, IT, PT)



Programme Interreg IV Bacchus : Réseau transfrontalier de recherche et de transfert des connaissances pour une viticulture durable

3 countries (FR, GR, UK)



Mycorray Project - Preventing fungal trunk diseases for the vine grower

6 countries (ES, FR, HU, IT, NL, UK)

Hennessy: allocation of 600 000 euros to found an international research project focused on GTD.

Enometrics XXIII - Colmar – 25-28 mai 2016

The research network in France



Acteurs français de la R&D sur les maladies du bois

(coordination par IFV)



9

Enometrics XXIII - Colmar – 25-28 mai 2016



Several ongoing projects in France

- 3 Casdar projects - 3,7 millions euros
Agricultural Ministry + CNIV
- FAM - Agricultural Ministry
- Regional councils (Burgundy, Val de Loire)
- BIVB, CIVB



- Study of the complex of pathogens and their interaction with grapevine
- Study of pathogen aggressiveness
- Understanding the tolerance of some varieties
- Impact of environmental factors and practices
- Understanding the mode of action of sodium arsenite
- Identification of new active molecules
- Biological control
- Curative practices
- ...

Enometrics XXIII - Colmar – 25-28 mai 2016



The CNIV (with the technical support of IFV) and FranceAgriMer have gathered an exceptional budget of about 600 000 € to launch an action plan against vine decline.

BIPE: consulting for strategic analysis

CNIV: 1.5 millions € for research

French National Assembly report

French Agricultural Ministry: 1,5 million €

Enometrics XXIII - Colmar – 25-28 mai 2016



In conclusion

- A serious problem
- Collective mobilization
- Needs for multidisciplinary skills
- center of interest for economists...

Enometrics XXIII - Colmar – 25-28 mai 2016

Acknowledgements



C. Bertsch



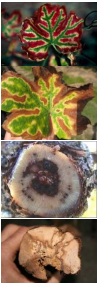
S. Trouvelot



P. Larignon



Enometrics XXIII - Colmar – 25-28 mai 2016



Thanks for your attention!

