



HAL
open science

The dynamic of annual carbon allocation to wood in european forests is consistent with a combined source-sink limitation of growth: Implications on growth simulations in a terrestrial biosphere model

Joannès Guillemot, Nicolas Martin-StPaul, Eric Dufrene, Christophe François, Kamel Soudani, Jean-Marc Ourcival, Paul Leadley, Nicolas Delpierre

► To cite this version:

Joannès Guillemot, Nicolas Martin-StPaul, Eric Dufrene, Christophe François, Kamel Soudani, et al.. The dynamic of annual carbon allocation to wood in european forests is consistent with a combined source-sink limitation of growth: Implications on growth simulations in a terrestrial biosphere model. AGU Fall Meeting 2014, 2014, San Francisco, United States. 2014, AGU Fall Meeting Abstracts. hal-02740491

HAL Id: hal-02740491

<https://hal.inrae.fr/hal-02740491>

Submitted on 2 Jun 2020

HAL is a multi-disciplinary open access archive for the deposit and dissemination of scientific research documents, whether they are published or not. The documents may come from teaching and research institutions in France or abroad, or from public or private research centers.

L'archive ouverte pluridisciplinaire **HAL**, est destinée au dépôt et à la diffusion de documents scientifiques de niveau recherche, publiés ou non, émanant des établissements d'enseignement et de recherche français ou étrangers, des laboratoires publics ou privés.

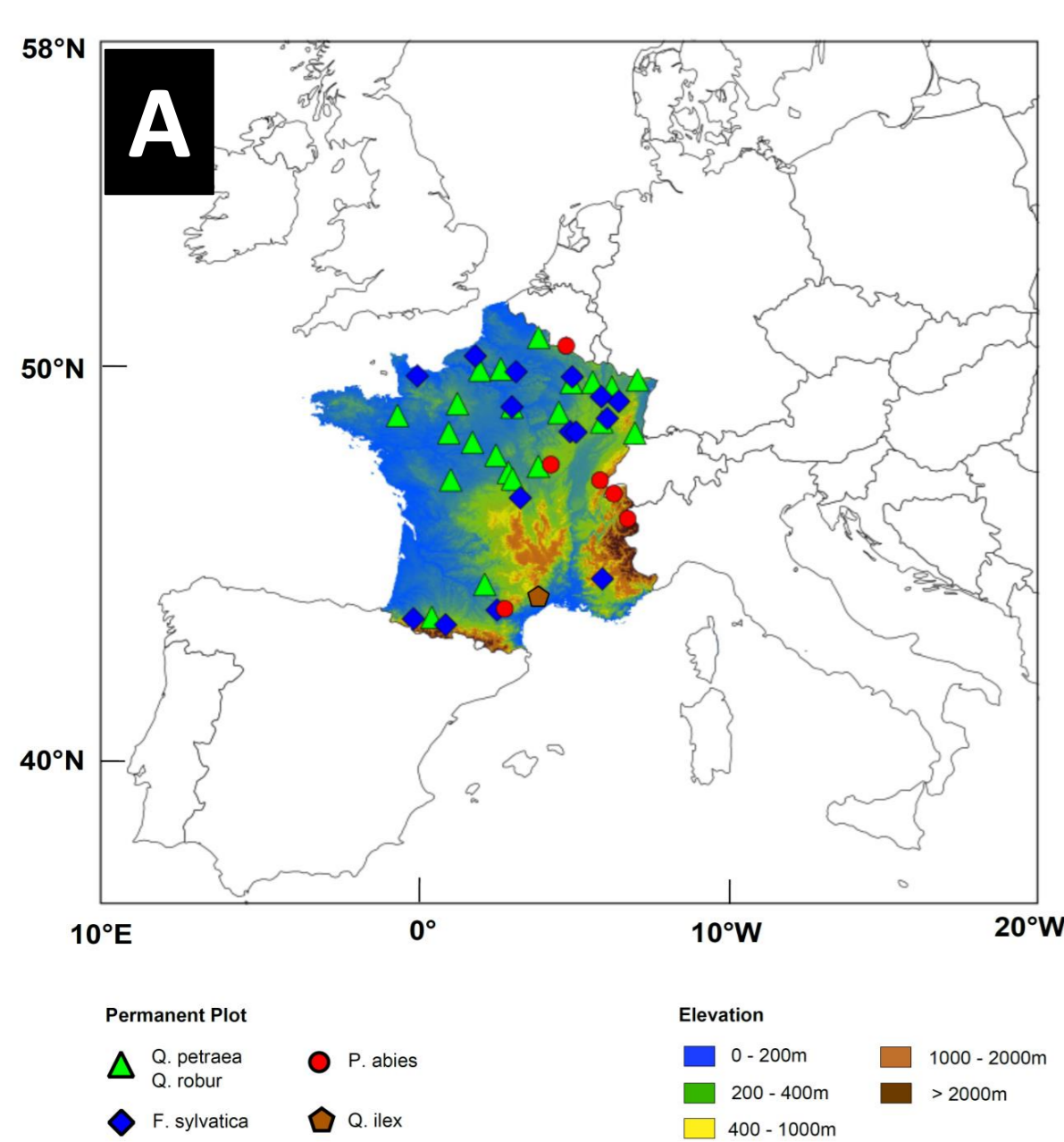
Introduction

- ❑ The physiological processes underlying the limitation of forest growth are still under debate. A number of recent local investigations challenge the historical view of a strict carbon (C) limitation of growth that is the basis of the C allocation rules of most terrestrial biosphere models (TBMs).
- ❑ The extent to which forest growth is under a C source- or a sink- control is of paramount importance to predict how trees will respond to global changes, especially with regards to the potential fertility effect of rising atmospheric CO₂.

Objectives

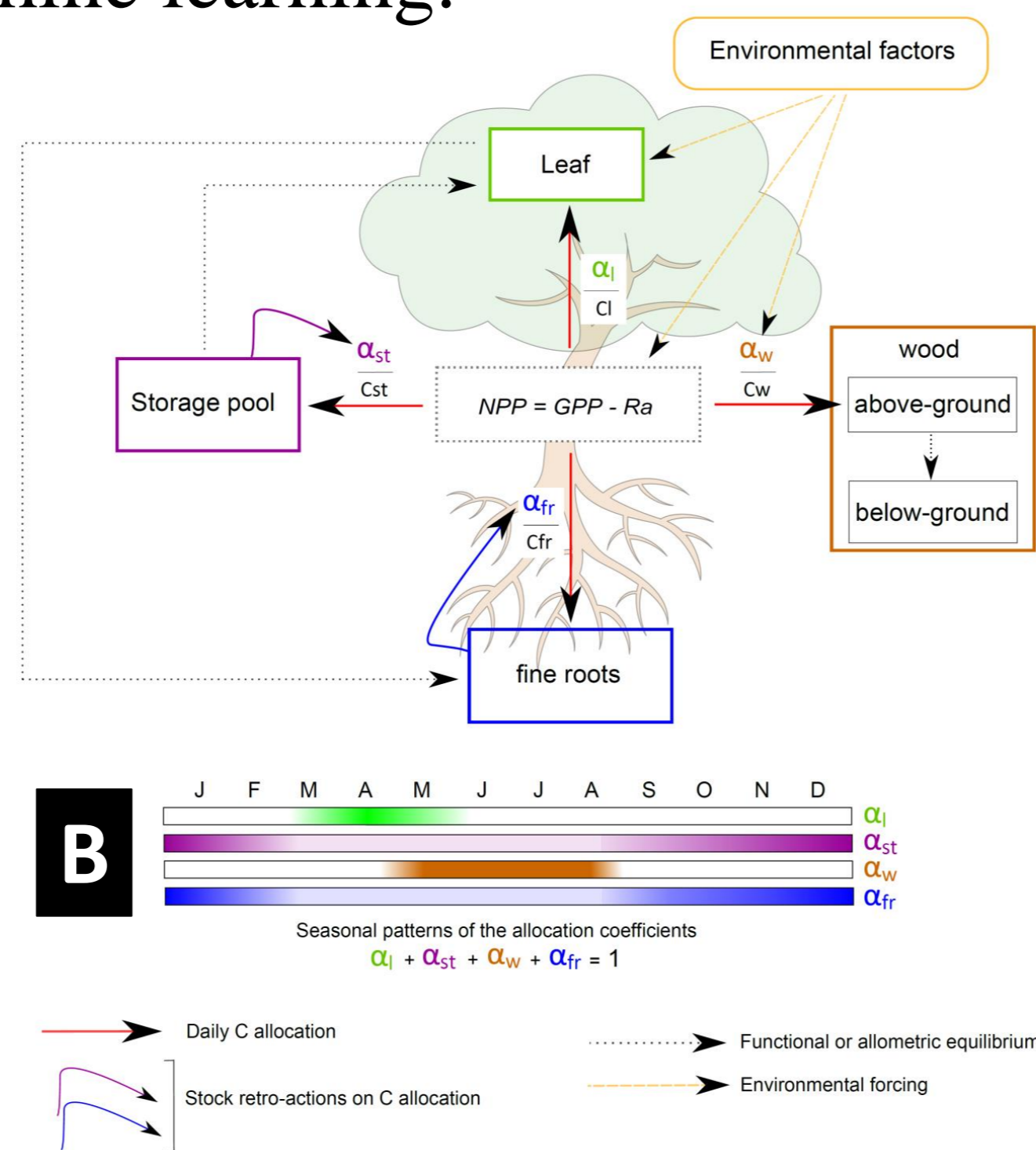
- ❑ To evaluate the dynamics of annual C allocation to wood along regional gradients in 5 major European tree species (in relation to environment and C budget)
- ❑ To implement the revealed C allocation rules within the CASTANEA TBM and evaluate the simulated wood productivity at regional scale
- ❑ To evaluate the implications of our new allocation scheme for the productivity of French forests along the 21st century

Material and Methods



- 4 species from sites representative of the main European biomes.
- C allocation to wood inferred from growth measurements (RENECOFOR permanent plots [A]) and simulated GPP and NPP.
- Assessment of inter-site and inter-year drivers using a Random Forest machine learning.

- C allocation scheme in CASTANEA: 4 compartments in semi-competition for C supply ([B, 1]).
- Simulated growth results from both source- and sink-limitations (direct effects of water and temp. stresses on growth).

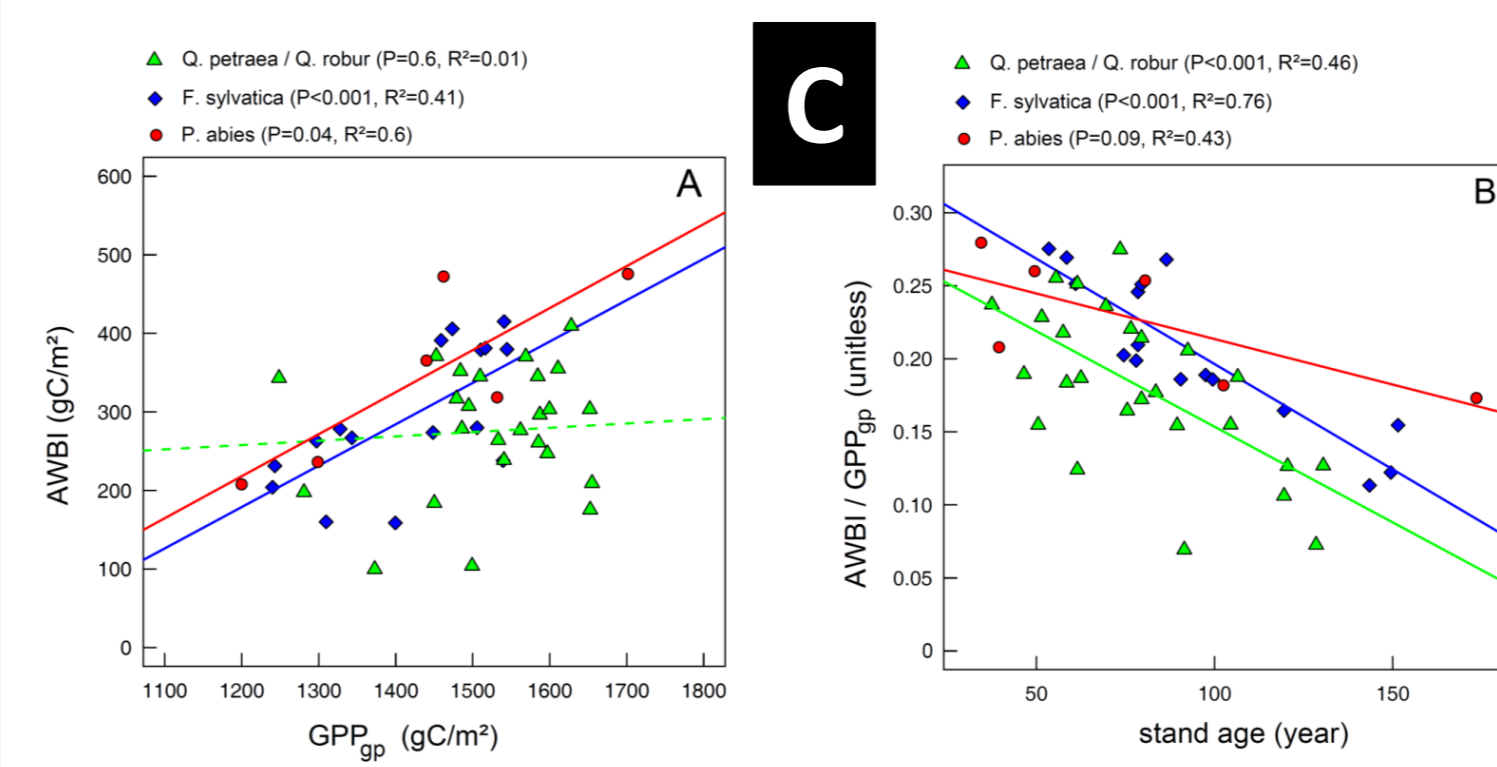


- Performance evaluation was based on the French forest national inventory (5 years of stand biomass increments on >10000 sites).
- Parameters of the allocation scheme were adjusted using a Bayesian optimization (6 param.) and validated on an independent subsample.
- Projections were based on the IPCC AIB scenario [2].

Conclusion

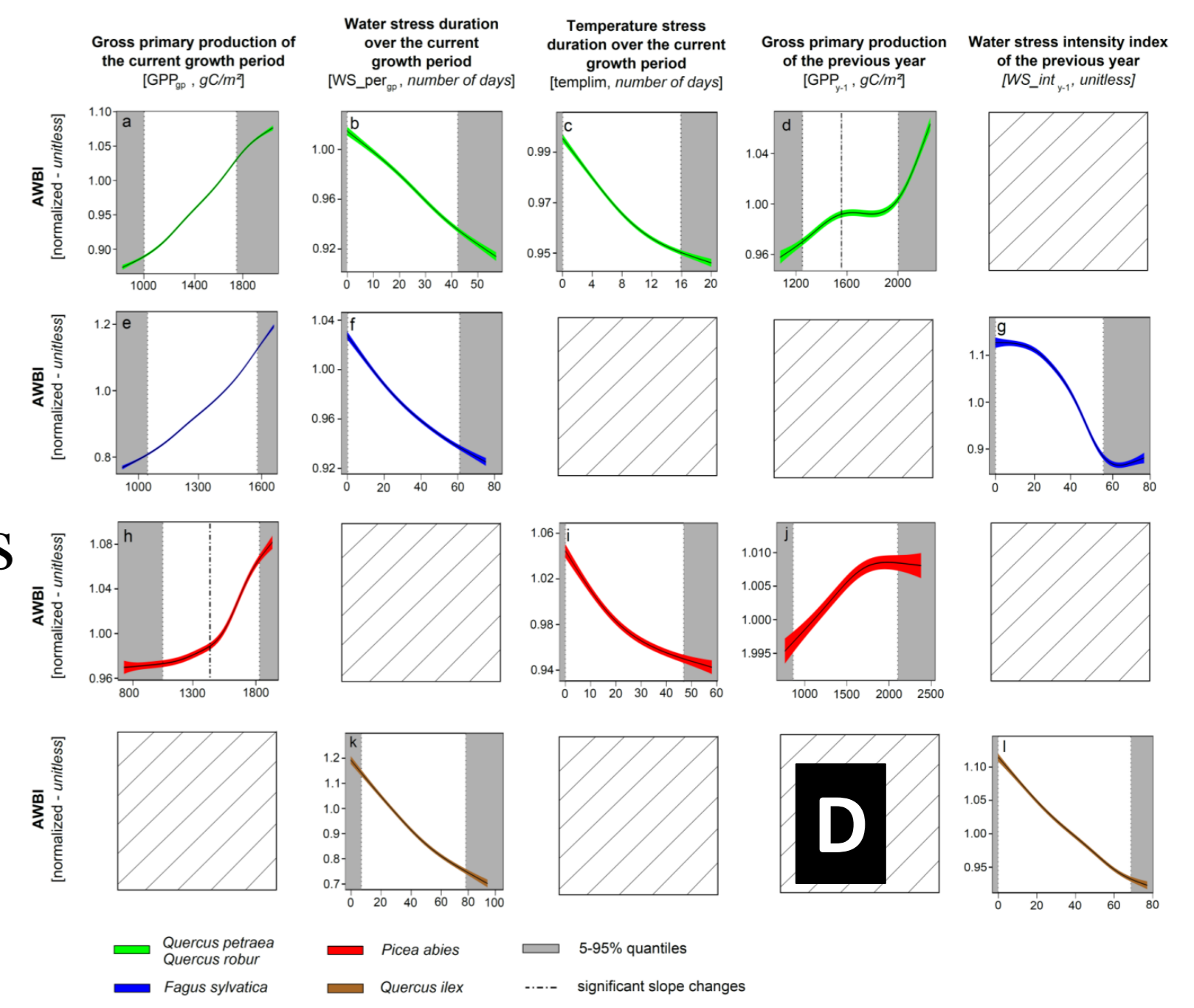
- ❑ European forest growth is under a complex panel of source and sink limitations, related to ontogeny, direct effect of water shortage and lagged response to past condition.
- ❑ C supply – growth homeostasis and sink controls should both be involved in growth modeling. This will strongly change our predictions regarding the future of forest growth.

Results and Discussion



- GPP – growth relationship is not consistent in temperate oak across France ([C]).
- Inter-site variability of C allocation to wood was mainly driven by an age-related decline.

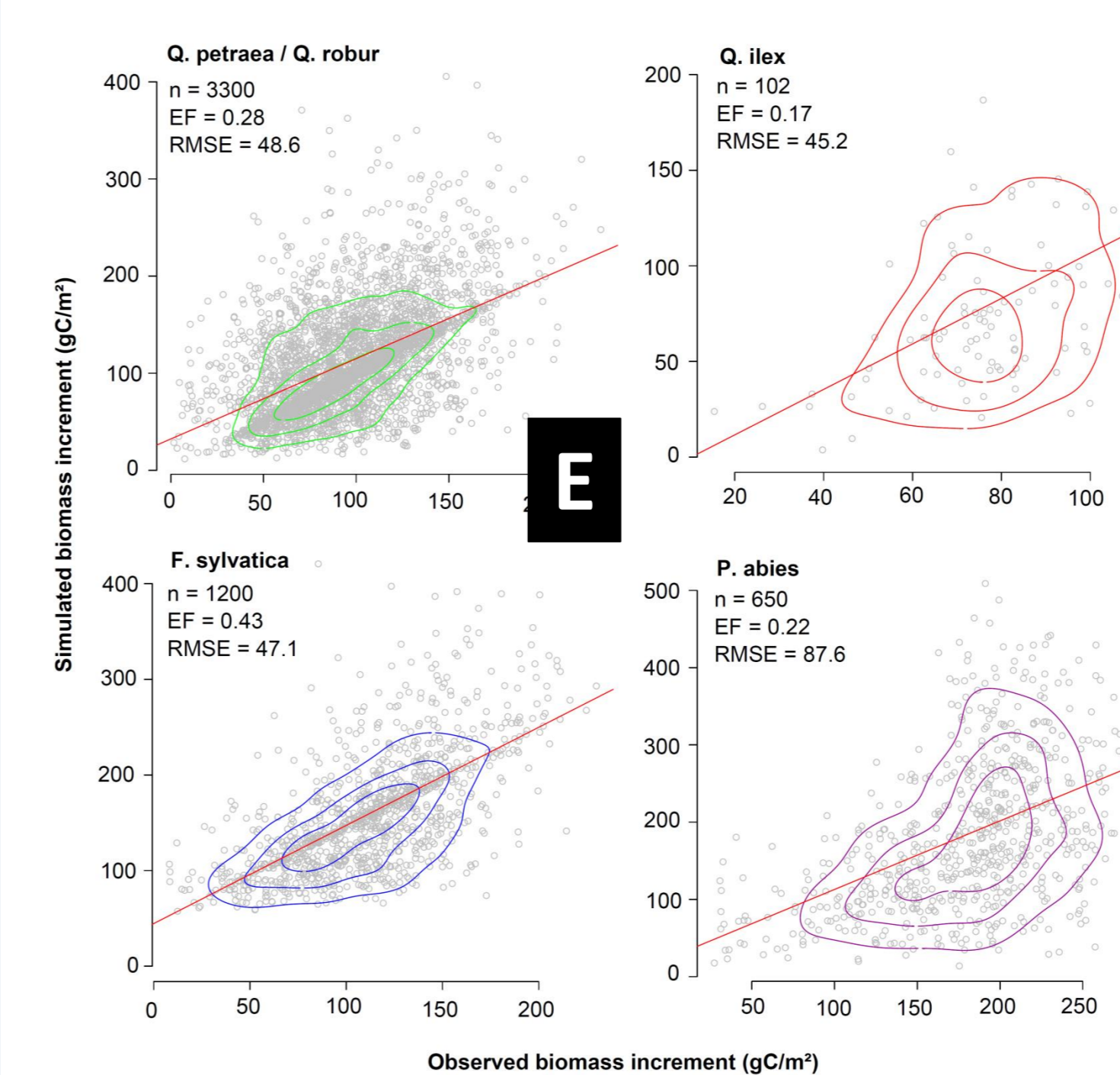
- The direct control of temperature or water stress on sink activity exerted a strong influence on the annual wood growth ([D]).



- The lagged effect of the past environment conditions was a significant driver of the annual C allocation to wood ([D]).

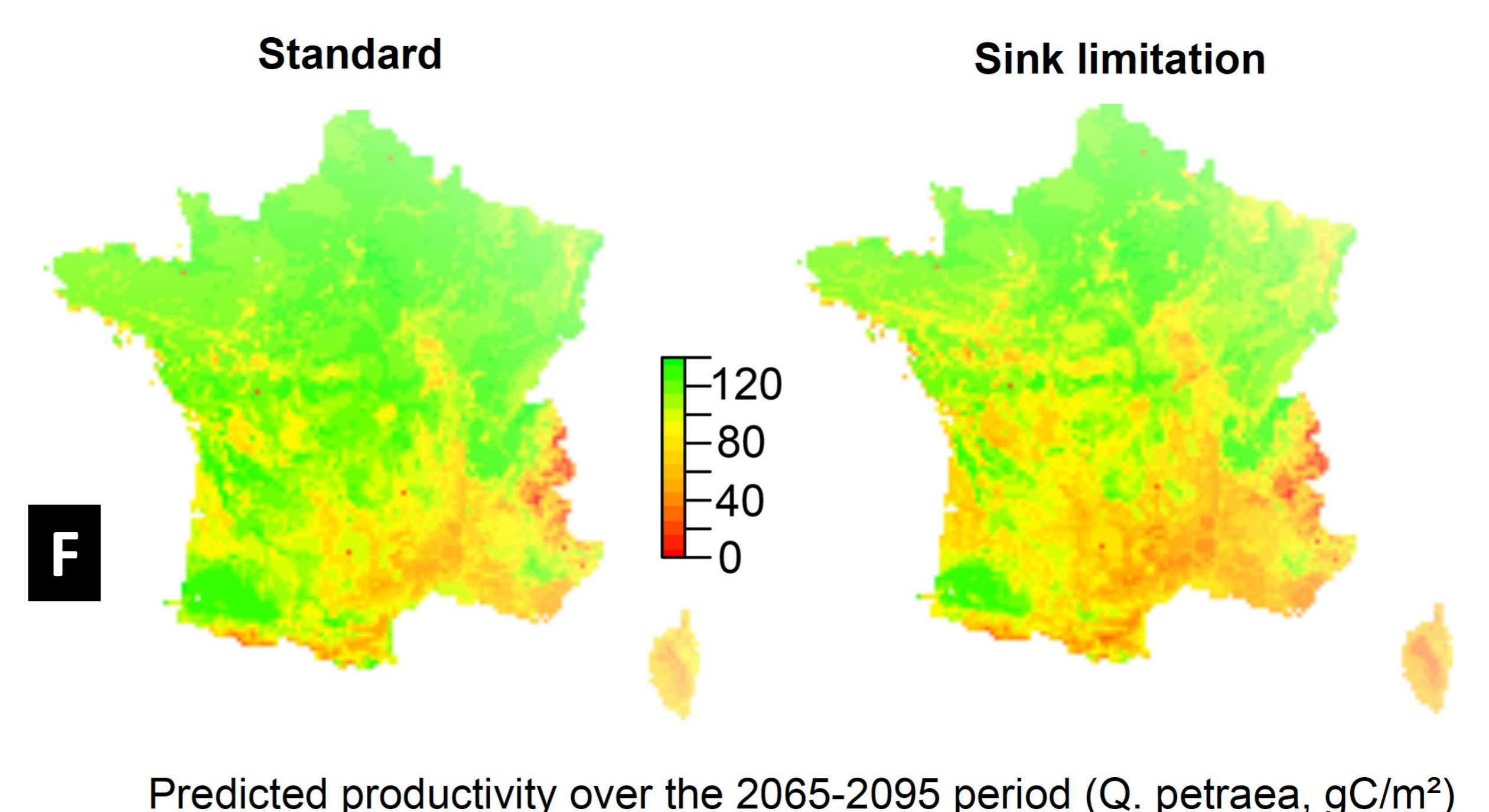
- C supply strongly limited growth only in deciduous temperate species.

- The source- sink- C allocation scheme performed satisfactorily against observed forest productivity ([E]), unlike the CASTANEA standard version (*data not shown*).



- It is crucial to evaluate TBMs against productivity (flux) rather than against stand biomass (stock) to gain insight into the underlying processes of forest growth.

- The CASTANEA projections for the French forest productivity are strongly affected by the implementation of the sink-limitation of growth ([F]).



Predicted productivity over the 2065-2095 period (Q. petraea, gC/m²)