



**HAL**  
open science

## **Soil micro-food web structure and functions exhibit contrasting dynamics according to litter quality**

Marie Sauvadet, Matthieu Chauvat, Daniel Cluzeau, Pierre-Alain Maron, Cecile Villenave, Isabelle Bertrand

### ► **To cite this version:**

Marie Sauvadet, Matthieu Chauvat, Daniel Cluzeau, Pierre-Alain Maron, Cecile Villenave, et al.. Soil micro-food web structure and functions exhibit contrasting dynamics according to litter quality. 5. International EcoSummit: Ecological Sustainability: Engineering Change, Aug 2016, Montpellier, France. <hal-02740667>

**HAL Id: hal-02740667**

**<https://hal.inrae.fr/hal-02740667v1>**

Submitted on 2 Jun 2020

**HAL** is a multi-disciplinary open access archive for the deposit and dissemination of scientific research documents, whether they are published or not. The documents may come from teaching and research institutions in France or abroad, or from public or private research centers.

L'archive ouverte pluridisciplinaire **HAL**, est destinée au dépôt et à la diffusion de documents scientifiques de niveau recherche, publiés ou non, émanant des établissements d'enseignement et de recherche français ou étrangers, des laboratoires publics ou privés.



HAL Authorization



# Soil micro-food web structure and functions exhibit contrasting dynamics according to litter quality

*M. Sauvadet<sup>1</sup>, M. Chauvat<sup>2</sup>, D. Cluzeau<sup>3</sup>, P-A. Maron<sup>5</sup>, C. Villenave<sup>6</sup>, I. Bertrand<sup>7</sup>*

*<sup>1</sup>INRA UMR FARE Reims; <sup>2</sup>ECODIV, University of Rouen,; <sup>3</sup>ECOBIO, University of Rennes; <sup>4</sup>INRA Agroecologie Dijon; <sup>6</sup>ELISOL Environnement; INRA UMR ECO&SOLS, Montpellier.*

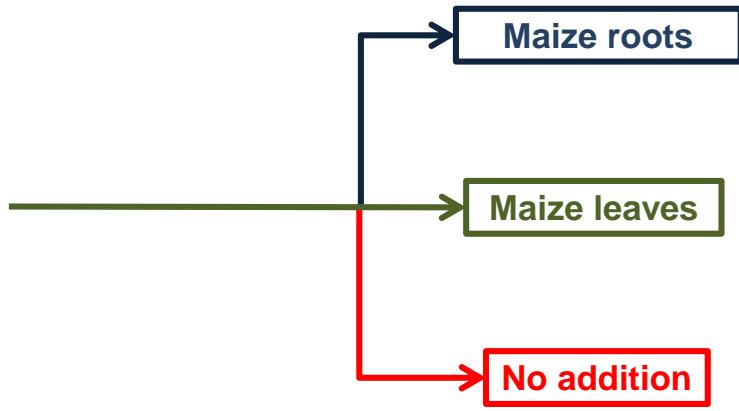
# Which effects of litter quality on soil microfood-web structure and functions?

## Study approach

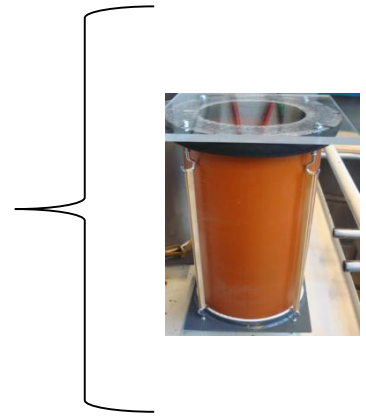
Soil sampling  
in the Estrees-Mons  
SOERE



Incorporation of litter  
in the 0-5 cm layer



Incubation at 15°C  
in microcosms

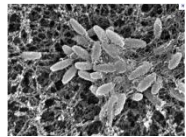


4 replicates by litter and date

## Variables followed: at 0, 15, 35 and 91 days after incubation

Soil micro-food web structure (*genus level*)

Decomposition functions

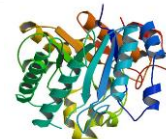


Bacteria & fungi (*pyrosequencing*)

Litter C mineralization (*NaOH traps*)

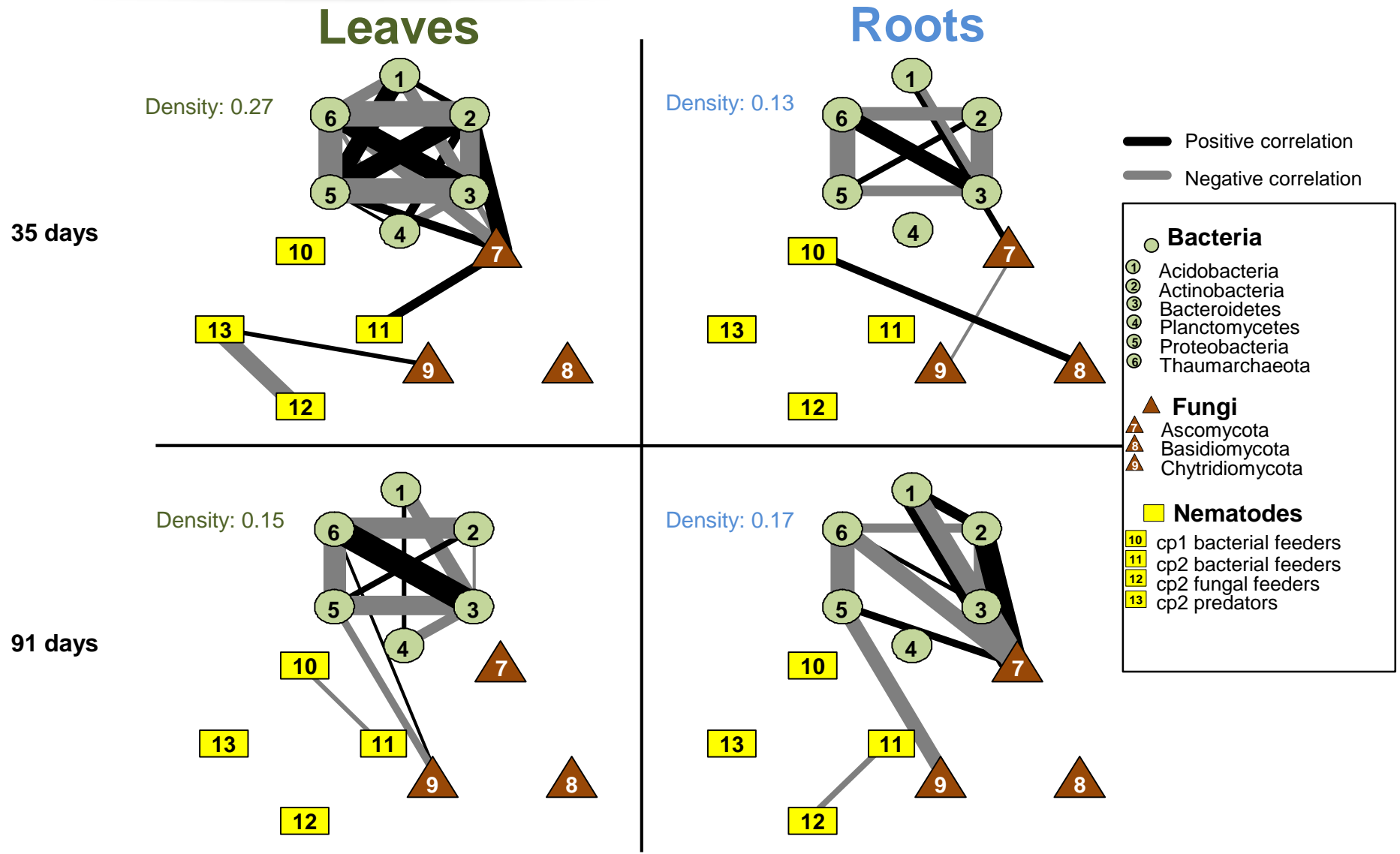


Nematodes (*Baermann extraction*)



Enzymes activities  
(*C hydrolytic & oxidative*)

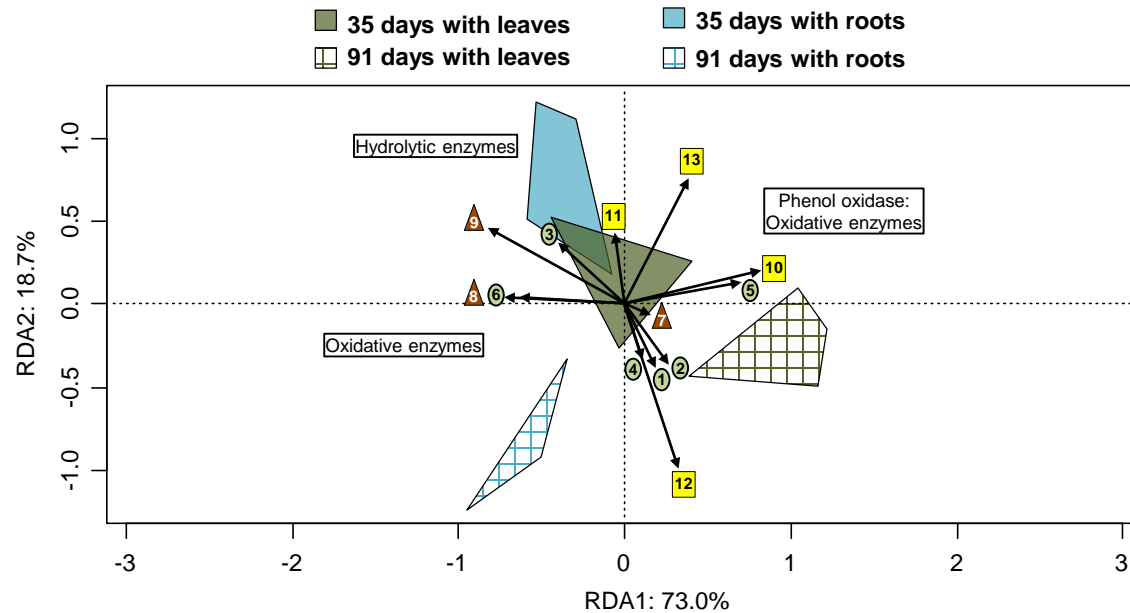
# Litter quality effects on micro-food web interactions



# Main conclusions

- Significant effects of litter quality on micro-food web structure and functions, but dependent of the stage of decomposition
- Biotic interactions varied with litter quality and stage of decomposition, and were higher during the early stage of leaf decomposition

- Contrasting micro food-web structure – functions relationships according the litter degraded



## Projet SOFIA (Soil Functional diversity as an indicator of sustainable management of Agroecosystems)



SAUVADET M.<sup>a</sup>, CHAUVAT M.<sup>b</sup>, CLUZEAU D.<sup>c</sup>, MARON P.-A.<sup>d</sup>, VILLENAVE C.<sup>e</sup>, BERTRAND I.<sup>f</sup>

<sup>a</sup>INRA UMR FARE, 51100 Reims; <sup>e</sup>ECODIV, Université de Rouen; <sup>UMR CNRS EcoBio, 35000 Rennes; <sup>UMR Agroécologie, 21000 Dijon; <sup>ELISOL</sup> Environnement, 34000 Montpellier; <sup>UMR EcoSols, 34000 Montpellier</sup></sup></sup>

marie.sauvadet@live.fr

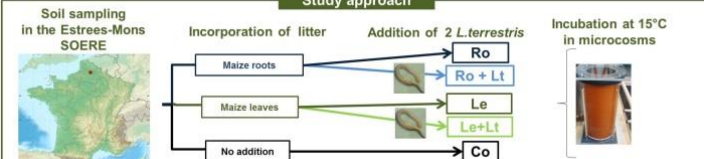
### Context

Anthropogenic pressures on agricultural soils are known to alter their biodiversity, which may affect the capacity of ecosystems to deliver functions and services according to the hypothesis on diversity – function relationship. Cropping systems is fueling belowground biota through the litter supplied, which varies in quality from year to year.

### Objectives

- Studying the impacts of the decomposition of litter contrasting qualities on soil micro-food web communities.
- Comparing the relationships between community structure and functioning for the two types of litter and with or without an ecosystem engineer (*L. terrestris*).

### Study approach



Variables followed: at 0, 15, 35 and 91 days after incubation (n=4)

- Litter decomposition: C mineralization & litter chemical quality (sugars, lignin and soluble)
- Soil communities: Bacterial and fungal communities (16S and 18S pyrosequencing); Nematode communities (Baeermann extraction)
- Soil enzymatic activities: hydrolytic C ( $\beta$ -glucosidase, CBH,  $\beta$ -xylosidase) and oxydative [phenol oxydase and peroxydase]

Fig1: Communities dissimilarities from soil without litter addition. Dissimilarities are calculated with Bray-Curtis distances at the genus level. Significant differences between sampling dates bear different letters, and sampling dates exhibiting significant difference between Pea and Barley are mentioned by a star.

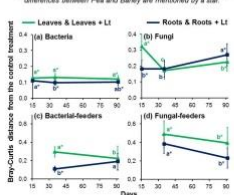


Fig 2: Enzymatic efficiencies. For each enzyme, treatments with significant differences bear a different letter.

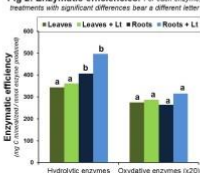
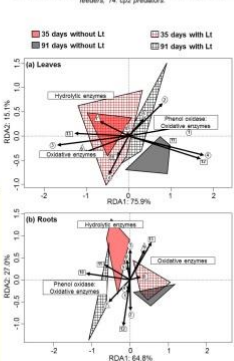


Fig 3: Redundancy analyses (RDAs) of enzymes constrained by the main micro-food web components. RDAs were performed on center-reduced matrices. Colors design bacteria, triangles fungi and squares nematodes. 1: Actinobacteria; 2: Acidobacteria; 3: Bacteroidetes; 4: Planctomycetes; 5: Proteobacteria; 6: Thaumarchaeota; 8: Ascomycota; 9: Basidiomycota; 10: Chytridiomycota; 11: cp1 bacterial-feeders; 12: cp2 bacterial-feeders; 13: cp2 fungal-feeders; 14: cp2 predators.



### Discussion and Conclusions

Bacterial pathway was more differentiated with leaves than roots addition for each sampling date (Fig 1), supporting the common paradigm that this pathway better develops on labile compounds. On the other hand, despite our expectation, fungal community was more differentiated at the earliest stage of decomposition with leaves addition (Fig 1), due to the preferential increase of Ascomycota taxa (Sauvadet et al., 2016), which are known as cellulolytic fungi.

We found contrasting relationships between soil biota structure and functions for leaves and roots decomposition (Fig 2). We assumed that this contrast contributed to the better enzymatic efficiencies for roots degradation (Fig 2). Overall, the presence of *L. terrestris* did not change microbial community structure (data not shown). However, enzymatic efficiency of some hydrolytic enzymes were slightly improved (Fig 2) and altered the relationships between structure and functions (Fig 3). We assumed that *L. terrestris* endogenous biota took over a part of the decomposition otherwise realized by soil microorganisms.

Acknowledgment: the ANR project SOFIA, which financed this work, the research teams of INRA Reims&Dijon and of Rouen&Rennes Universities.

### More informations:

- Sauvadet et al. (2016) Soil Biology&Biochemistry 95: 262-274



Projet SOFIA