



HAL
open science

Plant hydraulic: new insights brought by HRCT

Nicolas Martin-StPaul, Guillaume Charrier, B. Choat, Jose Manuel Torres Ruiz, Eric Badel, Steven Jansen, Hervé H. Cochard, Régis R. Burllett, N. Lenoir, Sylvain S. Delzon

► **To cite this version:**

Nicolas Martin-StPaul, Guillaume Charrier, B. Choat, Jose Manuel Torres Ruiz, Eric Badel, et al.. Plant hydraulic: new insights brought by HRCT. Xylem International Meeting, Sep 2015, Bordeaux, France. INRA - Université de Bordeaux, 86 p., 2015, Xylem International Meeting. hal-02742453

HAL Id: hal-02742453

<https://hal.inrae.fr/hal-02742453>

Submitted on 3 Jun 2020

HAL is a multi-disciplinary open access archive for the deposit and dissemination of scientific research documents, whether they are published or not. The documents may come from teaching and research institutions in France or abroad, or from public or private research centers.

L'archive ouverte pluridisciplinaire **HAL**, est destinée au dépôt et à la diffusion de documents scientifiques de niveau recherche, publiés ou non, émanant des établissements d'enseignement et de recherche français ou étrangers, des laboratoires publics ou privés.

Introduction

- Recent advances in plant hydraulics have shed light on artifacts generated by destructive hydraulic measurements.
- A major issue relates to the presence of open xylem vessels in tissue used for hydraulic measurements with the centrifuge system.
- These artifacts are thought to overestimate plant drought vulnerability, influencing our understanding of the whole plant water balance.
- High resolution computed tomography (HRCT) allows the detection of air and sap-filled xylem conducting elements in the wood of intact plants and can provide non-biased assessment of plants adaptation to drought.

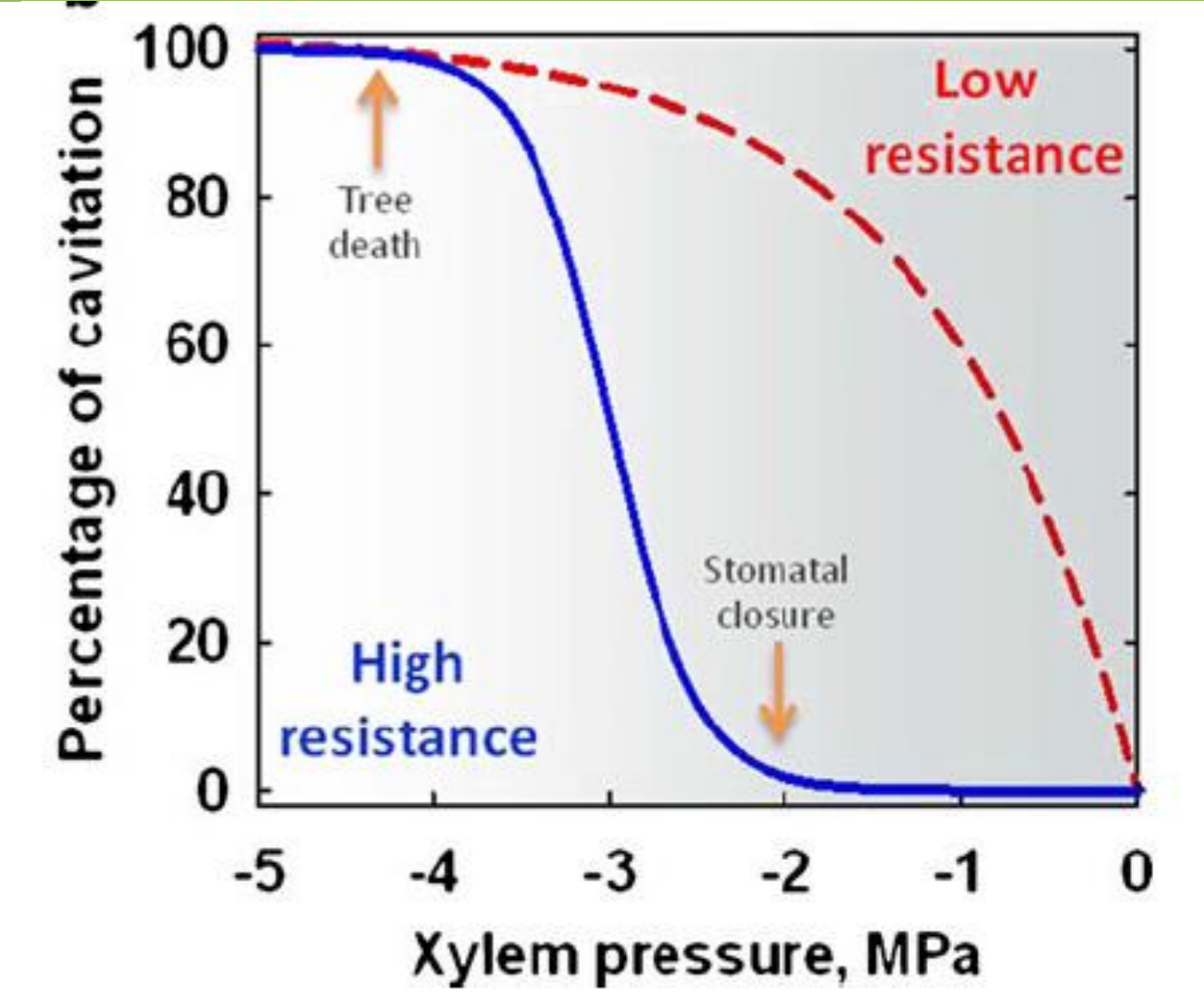


Figure 1: taken from [1]. The red VC shows a very low resistance if compared to the point of stomata closure. This curve is often obtained with classical laboratory methods in long-vesseled species. The blue curve is consistent with the idea that plants are resistant to cavitation and that stomata regulate water loss to avoid cavitation.

OBJECTIVE : Assessing plant hydraulic responses to drought across 3 HRCT experiments

Material & Methods

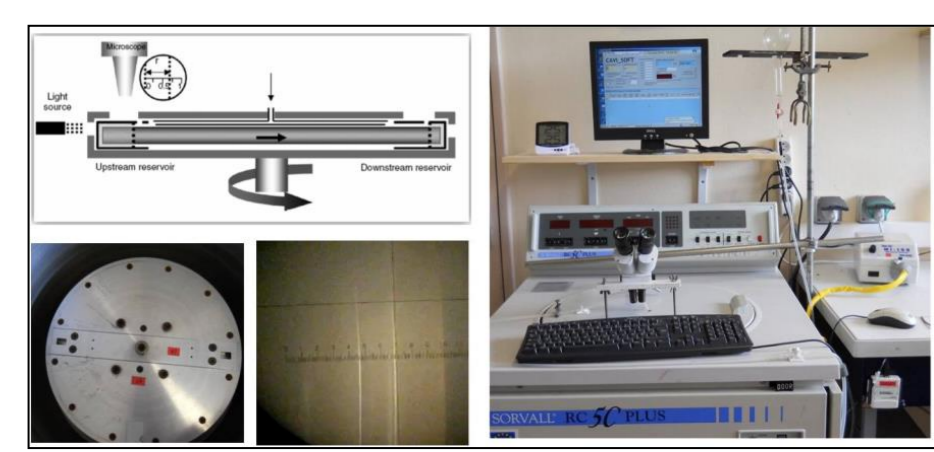


Figure 2: Bench drying and centrifuge were used as standard techniques to assess VC in ring porous, diffuse porous and conifers



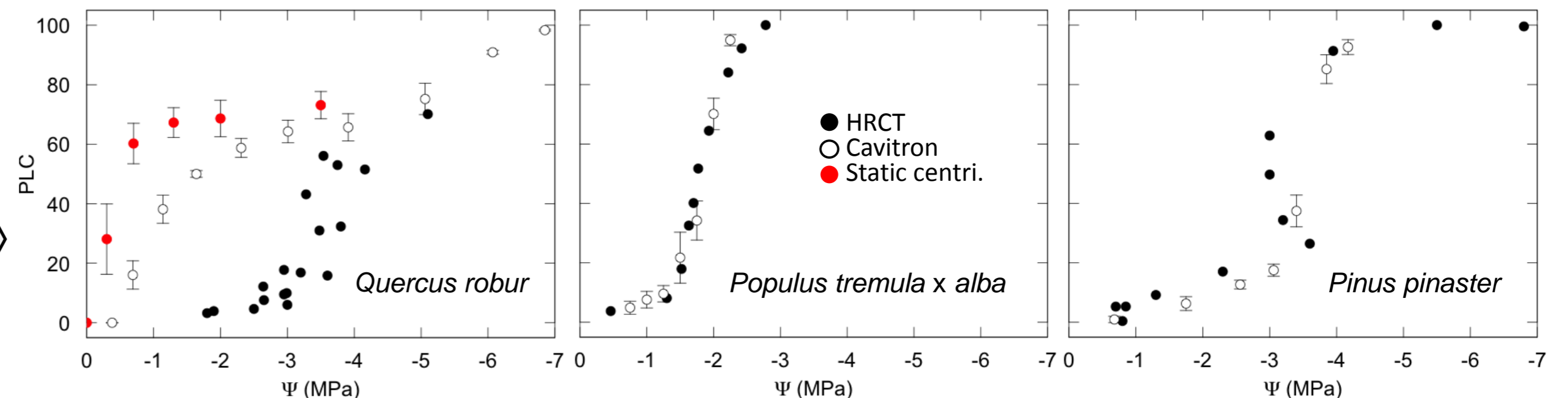
Figure 3: SOLEIL synchrotron where most of the HRCT data shows in these studies were measured.

(1) We compared Vulnerability Curves to cavitation (VC) assessed with classical hydraulic methods (Bench dehydration, Static centrifuge, Cavitron) and HRCT for species with different wood anatomies (*i.e.* ring-porous, diffuse porous, and tracheids).

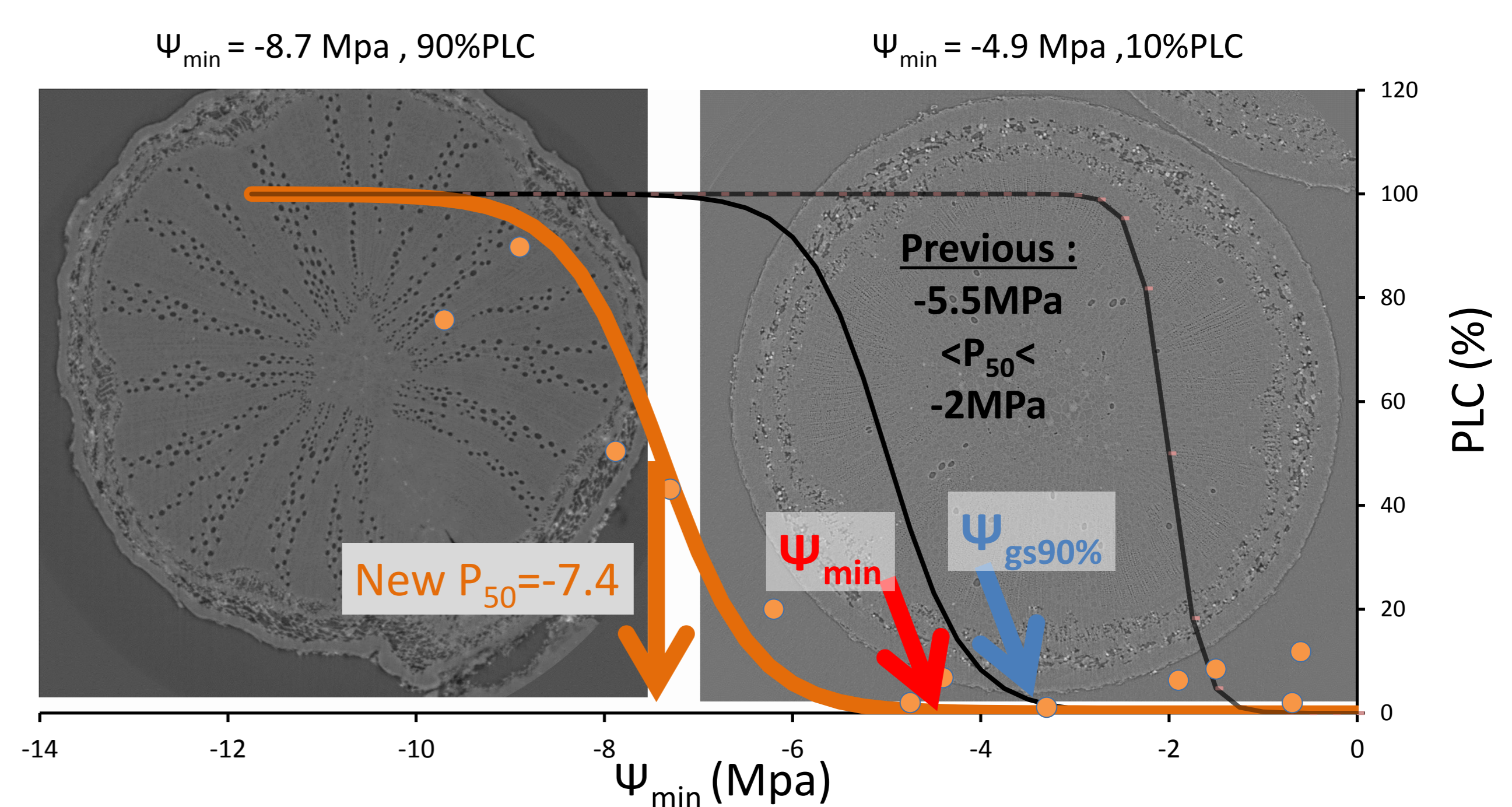
(2) We compared safety margins for stomatal conductance and minimum water potential, based on HRCT VC (3 years-old intact seedlings), with previous safety margins for the well documented Mediterranean oak *Q. ilex*

(3) We computed HRCT-based VC in two grapevine species (*Vitis vinifera* cv Cabernet-Sauvignon and *Vitis riparia* cv 'Gloire de Montpellier'), and two organs (stems and petioles).

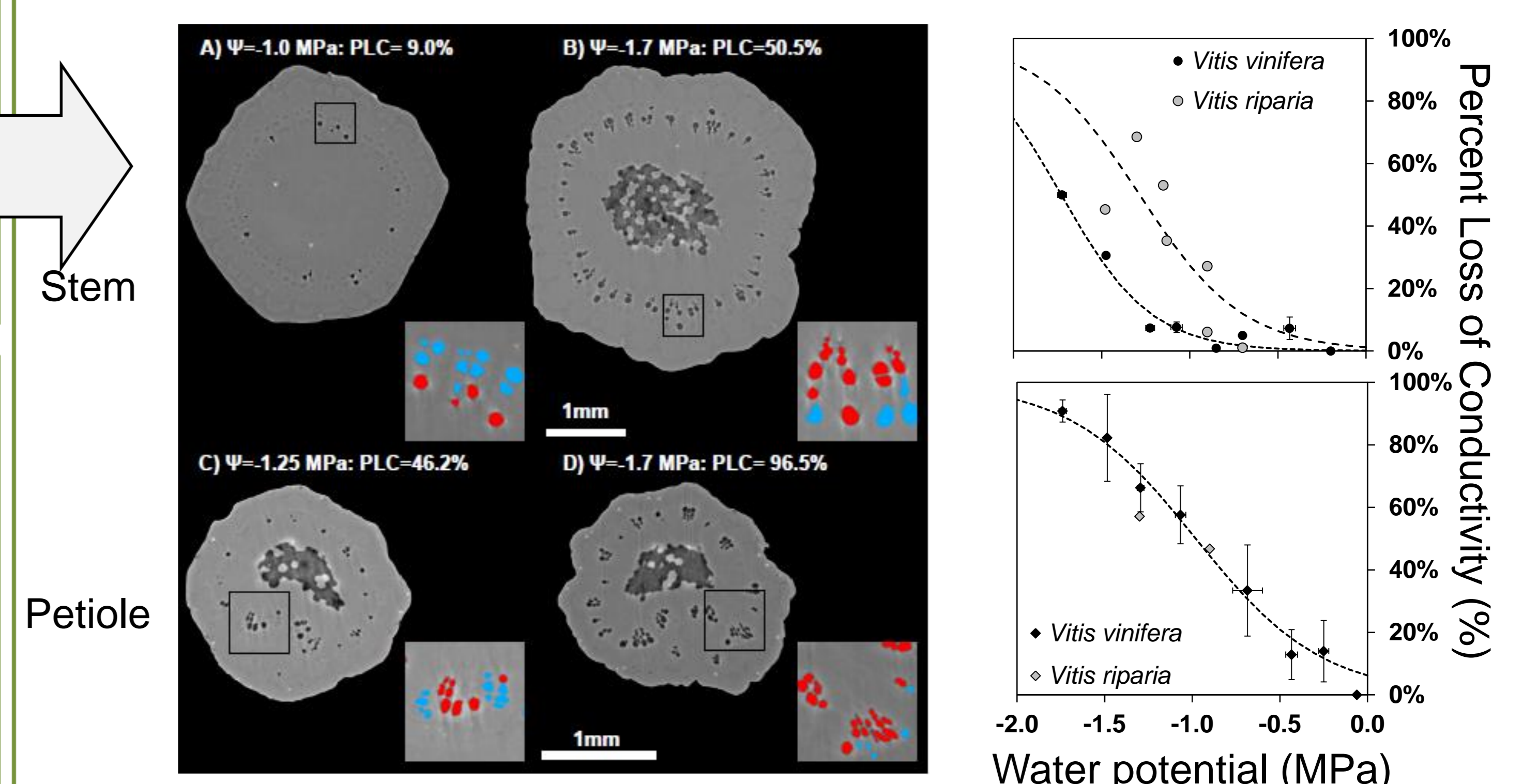
Results & Discussion



Result 1: Vulnerability curves produced with common methods (cavitron, static centrifuge) yielded consistent results only in tracheid-based (*Pinus*) and relatively short-vesseled species (*Populus*). HRCT confirmed the open-vessel artifact with common methods in long vessels species (*Quercus*).



Result 2: Previously published P_{50} for this species with ranged between -2 to -5.5MPa with very low safety margins. HRCT demonstrates that *Q. ilex* has P_{50} of about -7.4 MPa with safety margins 2 to 5 MPa higher than previously described [2].



Result 3: *Vitis vinifera* exhibits no embolism in stem above -1.0MPa ($\Psi_{50} = -1.73$ MPa), whereas *Vitis riparia* is more drought-sensitive ($\Psi_{50} = -1.28$ MPa). Also, petioles are more sensitive than stems ($\Psi_{50} = -0.98$ MPa).

Conclusion

- HRCT allows us to work on intact plants and evaluate the xylem hydraulic functioning by direct observation
- HRCT is a relevant method to study plant hydraulics, especially in species that are prone to artefacts with usual hydraulic methods.