



**HAL**  
open science

## Benthic Microbial community responses to pesticides in lake littoral zones

Floriane Larras, Agnes Bouchez, Bernard Montuelle

► **To cite this version:**

Floriane Larras, Agnes Bouchez, Bernard Montuelle. Benthic Microbial community responses to pesticides in lake littoral zones. 12. Symposium on Aquatic Microbial Ecology, Aug 2011, Rostock, Germany. hal-02745822

**HAL Id: hal-02745822**

**<https://hal.inrae.fr/hal-02745822v1>**

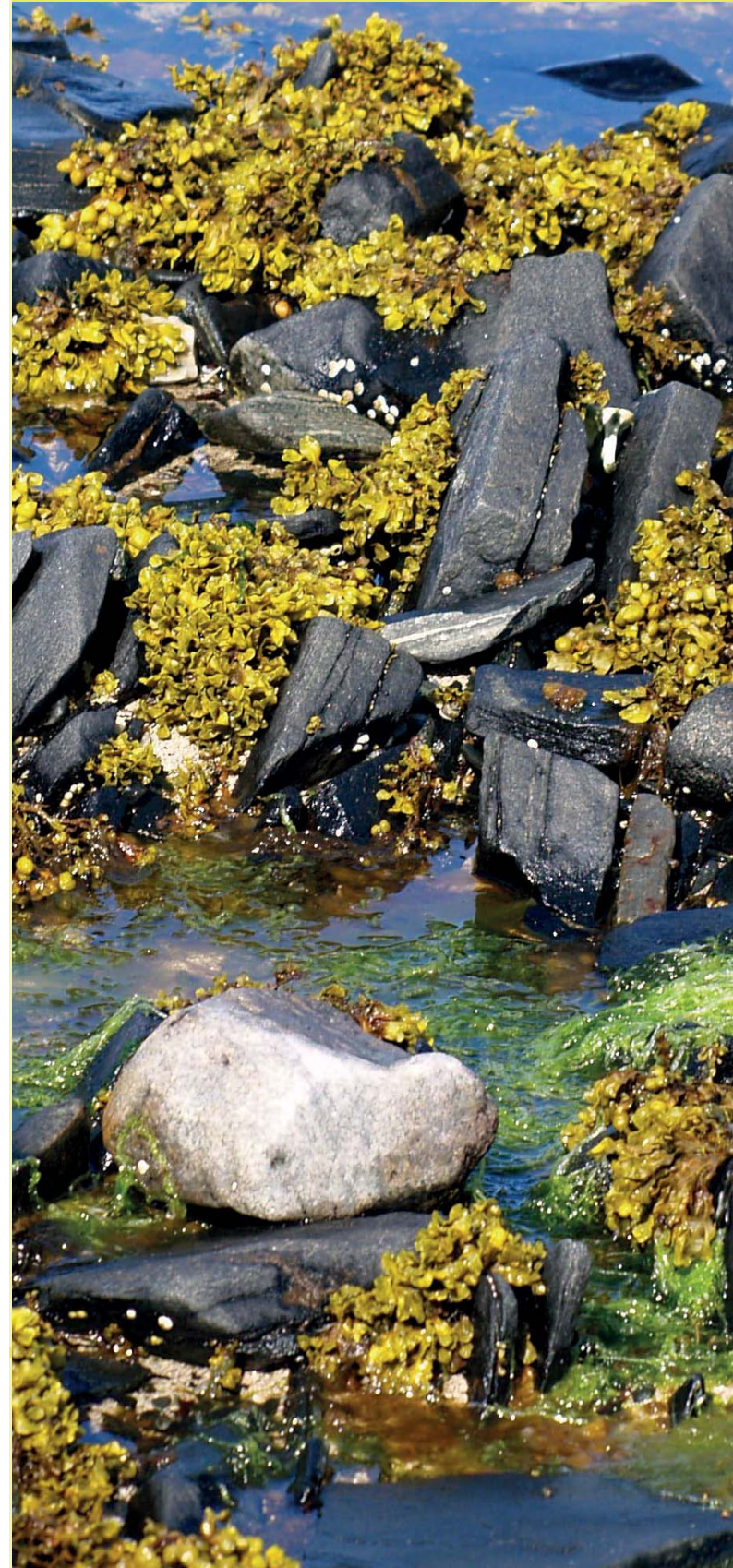
Submitted on 3 Jun 2020

**HAL** is a multi-disciplinary open access archive for the deposit and dissemination of scientific research documents, whether they are published or not. The documents may come from teaching and research institutions in France or abroad, or from public or private research centers.

L'archive ouverte pluridisciplinaire **HAL**, est destinée au dépôt et à la diffusion de documents scientifiques de niveau recherche, publiés ou non, émanant des établissements d'enseignement et de recherche français ou étrangers, des laboratoires publics ou privés.



The 12<sup>th</sup> Symposium on Aquatic Microbial Ecology



# SAME12 2011

from August 28<sup>th</sup>  
to September 2<sup>nd</sup>

12<sup>th</sup> Symposium  
on Aquatic Microbial Ecology

Germany  
Rostock–Warnemünde

12<sup>th</sup> Symposium on Aquatic Microbial Ecology  
August 28 – September 02, 2011



# Abstract Book

Editors: Klaus Jürgens and Matthias Labrenz



[www.io-warnemuende.de/same12](http://www.io-warnemuende.de/same12)

**The 12<sup>th</sup> Symposium on Aquatic Microbial Ecology**

# Table of Contents

Welcome Address	1
General Information	2
Symposium Venue	2
Language	2
Symposium Office	2
Contact Information	2
Computers and Internet Access	2
Instructions for Oral Presentations	2
Instructions for Poster Presentations	3
Social Events	3
Excursions	4
Local Transport	5
Ticket Information	5
Taxi	5
Committees	6
Programme Overview	7
Plenary Speakers	8
Symposium Programme	10
List of Posters	17
Abstracts Oral Presentations	27
Abstracts Poster Presentations	115
List of Participants	227
Authors	245
Notes	249

---

## Imprint

Published by Leibniz Institute for Baltic Sea Research Warnemünde (IOW)

Editors: Klaus Jürgens and Matthias Labrenz

Cover photo: Christian Bruckner

Cover design: Maximilian Berthold

Printed by: Universitätsdruckerei der Universität Rostock, Industriestraße 15, 18069 Rostock-Schmarl

Printed in 300 copies

Symposium on Aquatic Microbial Ecology

Abstract book / SAME12 – The 12<sup>th</sup> Symposium on Aquatic Microbial Ecology,

August 28 – September 02, 2011, Rostock-Warnemünde, Germany

SAME secretariat IOW - Leibniz Institute for Baltic Sea Research Warnemünde (IOW)

Seestraße 15, 18119 Rostock, Germany

e-mail address: same12@io-warnemuende.de

**BENTHIC MICROBIAL COMMUNITY RESPONSES TO PESTICIDES IN LAKE LITTORAL ZONES**Larras, F.<sup>1</sup>, Bouchez, A.<sup>1</sup>, Montuelle, B.<sup>1</sup>*<sup>1</sup>Institut National de la Recherche Agronomique, CARRTEL, 74200 Thonon-Les-Bains, France*

Herbicides contamination of lake ecosystems is characterized by mixture of several molecules at low concentration. Their effect on microorganisms, especially benthic communities, is not well known. With the view of assessing the ecological risk of herbicides for aquatic microorganisms, some models (Species sensitivity distribution-SSD, Independent Action, Concentration Addition) have been developed on phytoplanktonic species of the pelagic zone. They predict protective concentrations for a species or a community exposed to a substance or a mixture. Lacustrine littoral zones are often defined by higher concentrations and diversity of substances. Benthic microalgae (biofilm) are, in these areas, an essential element of food web (biomass, function). The specific biofilm structure may modify their exposition and their sensibility. Among biofilm communities, diatoms are mainly used as standardized bioindicators for trophic pressure (Biological Diatoms Index) and this could be used for prediction of ecotoxicological effect. To assess if SSD models remain valid for benthic diatoms, the first step is to build a data set of benchmarks (as NOEC: No Observed Effect Concentration). Few data are available in the literature for microphytobenthos and often for the same species. So, we have tested, in monospecific bioassays, a dozen of lacustrine diatoms and eight herbicides with different way of action. The adaptation of monospecific tests (normalized and firstly used on planktonic algae) to benthic algae provides a panel of benchmarks depending on the species sensibility. Dose-response bioassays were carried out, using specific growth rate as endpoint. Data such EC<sub>50</sub>, NOEC or LOEC allow to assess the ecotoxicological response of each tested species and to elaborate adapted SSD models. Finally, these models should help to assess the phyto-benthic diversity changes and to put forward reliable benchmarks for herbicide risk assessment on the littoral zone.