



HAL
open science

The rabbit preimplantation embryo as a paradigm to explore naive pluripotent stem cell derivation in non rodent species

Pierre Osteil, Yann Tapponnier, Anaïs Moulin, Thierry Joly, Pierre Savatier, Marielle Afanassieff

► To cite this version:

Pierre Osteil, Yann Tapponnier, Anaïs Moulin, Thierry Joly, Pierre Savatier, et al.. The rabbit preimplantation embryo as a paradigm to explore naive pluripotent stem cell derivation in non rodent species. 5. International Rabbit Biotechnology Meeting, Jun 2013, Shanghai, China. 2013, 5th International meeting on Rabbit Biotechnology, Shanghai, China, 7-8 June 2013. hal-02748329

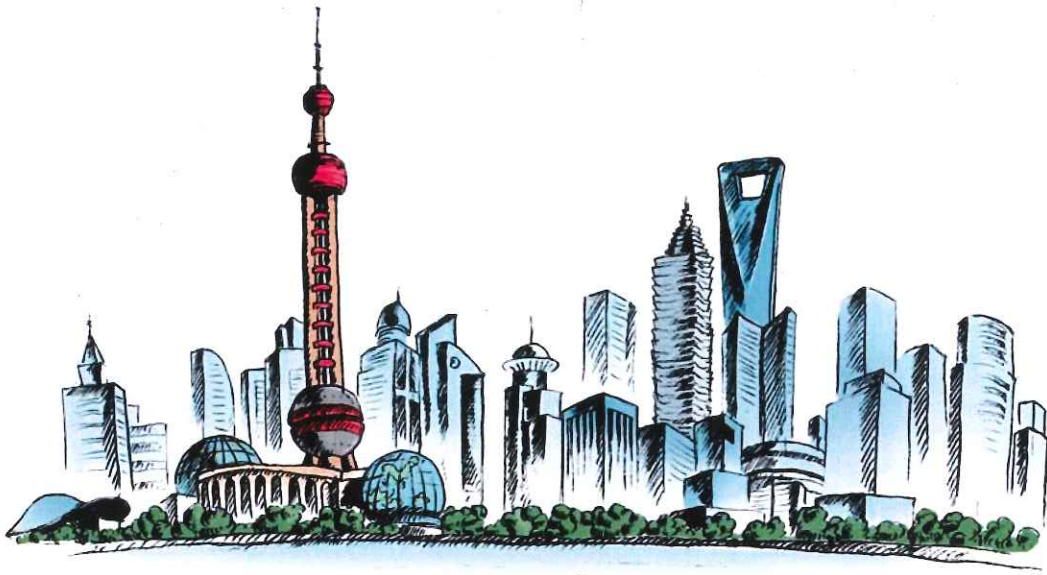
HAL Id: hal-02748329

<https://hal.inrae.fr/hal-02748329v1>

Submitted on 3 Jun 2020

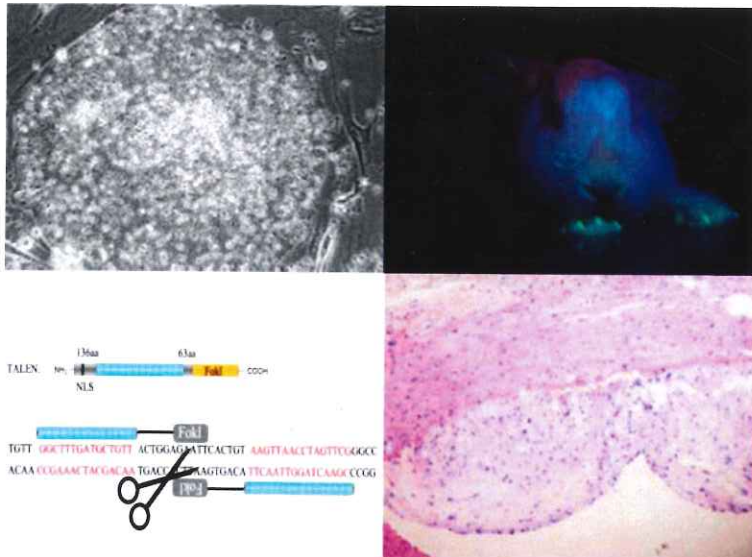
HAL is a multi-disciplinary open access archive for the deposit and dissemination of scientific research documents, whether they are published or not. The documents may come from teaching and research institutions in France or abroad, or from public or private research centers.

L'archive ouverte pluridisciplinaire **HAL**, est destinée au dépôt et à la diffusion de documents scientifiques de niveau recherche, publiés ou non, émanant des établissements d'enseignement et de recherche français ou étrangers, des laboratoires publics ou privés.



The 5th International meeting on rabbit biotechnology

Shanghai, China, 7-8 June 2013



Department of Laboratory Animal Science, Shanghai Jiaotong University, School of Medicine
Shanghai Association for Laboratory Animal Science

Poster session

1. The rabbit pre-implantation embryo as a paradigm to explore naive embryonic Stem cell derivation in non-rodent species 14
P. Osteil¹, Y. Tapponnier¹, A. Moulin¹, T. Joly², P. Savatier¹, and M. Afanassieff¹
¹ *Stem Cell and Brain Research Institute, INSERM U846, INRA USC 1361, Bron, France,*
² *VetAgroSup, UPSP ICE, ISARA-Lyon, Lyon, France*
2. Characterization of Multipotent Stem Cells from Rabbit Amniotic Fluid 16
Jaroslav Slamečka Jr., Peter Chrenek
Animal Production Research Centre Nitra, 951 41 Lužianky, Slovak Republic, chrenekp@cvzv.sk, and Faculty of Biotechnology and Food Science, Slovak University of Agriculture in Nitra, 949 72 Nitra, Slovak Republic
3. Sperm mediated gene transfer in rabbit 18
Vasicek D., Vasickova K., Parkanyi V., Ondruska L., Chrenek P., Rafay J.
Animal Production Research Centre Nitra, 951 41 Lužianky, Slovak Republic, vasicek@cvzv.sk, and Faculty of Biotechnology and Food Science, Slovak University of Agriculture in Nitra, 949 72 Nitra, Slovak Republic, jan.rafoy@uniag.sk
4. The effect of different passages of donor cell on the efficiency of rabbit somatic nuclear transfer 19
SONG Wei-jie¹, GU Rui-huan², YIN Ming-ru², LI Dun-gao¹, XING Feng-ying², LI Shan-gang², CHEN Xue-jin², LI He-ping¹
¹ *College of Wildlife Resource, Northeast Forestry University, Harbin 150040, China*
² *Laboratory Animal Centre, Shanghai Jiao Tong University, School of Medicine, Shanghai 200025, China*
5. The WHHLM rabbit is a good bioresource for studies about hypercholesterolemia, atherosclerosis, and coronary heart disease. 20
Tomonari Koike¹, Satoshi Yamada¹, Ying Yu¹, Nobue Kuniyoshi¹, Masashi Shiomi^{1,2}
¹ *Institute for Experimental Animals, and 2 Division of Comparative Pathophysiology, Kobe University Graduate School of Medicine, Kobe, Japan*
E-mail: ieakusm@med.kobe-u.ac.jp
6. Probucol stabilizes the atherosclerotic plaques in WHHL rabbits 22
Shen Li¹, Manabu Niimi¹, Tomonari Koike², Masashi Shiomi², Jianglin Fan¹
¹ *Department of Molecular Pathology, Interdisciplinary Graduate School of Medicine and Engineering, University of Yamanashi, Yamanashi 409-3898, Japan*
² *Institute for Experimental Animals, Kobe University School of Medicine, Kobe, Japan*
7. The Oct4 promoter-EGFP transgenic rabbit: A new model for monitoring pluripotency of rabbit stem cells 23
Mingru Yin, Zhenfu Fang, Fengying Xing, Manxi Jiang, Pengcheng Kong, Weihua Jiang, Yao Li, Xiaomei Zhou, Lan Tang, Shangang Li and Xuejin Chen*
Department of Laboratory Animal Sciences, School of Medicine, Shanghai Jiao Tong University, 200025 Shanghai, China.
8. Polymorphisms of GnRHR, FSH β and GDF9 Gene and Their Relationships with Reproductive Traits in Meat Rabbits 24
Huiwei Sun, Suping Sun, Tianfeng Liu, Xiaomin Zhao, Yuanfeng Yang, Aiguo Yang
College of Animal Science and Technology, Shandong Agricultural University, Tai'an Shandong, 271000

5th International Rabbit Biotechnology Meeting: Shanghai 7-8/06/2013

The rabbit pre-implantation embryo as a paradigm to explore naive embryonic stem cell derivation in non-rodent species

P. Osteil¹, Y. Tapponnier¹, A. Moulin¹, T. Joly², P. Savatier¹, and M. Afanassieff¹

¹ Stem Cell and Brain Research Institute, INSERM U846, INRA USC 1361, Bron, France

² VetAgroSup, UPSP ICE, ISARA-Lyon, Lyon, France

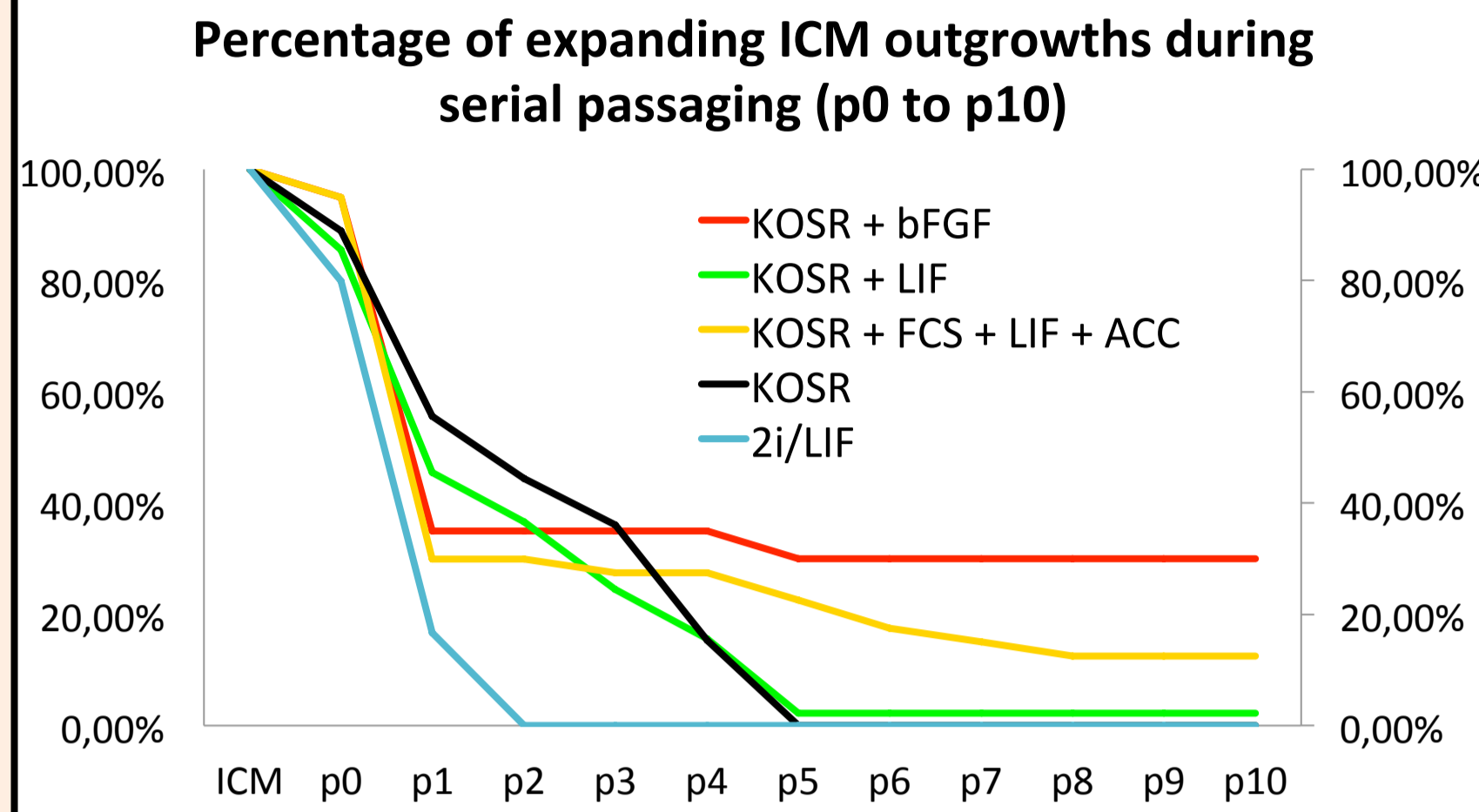
Rabbit is a good model to improve embryonic stem cell (ESC) derivation in non-rodent species, as it can produce up to 30 embryos per super-ovulated females. All rabbit ESC line produced so far showed the characteristics of primed pluripotency. In this work, we investigated the conditions suitable for the generation of naïve ESCs in rabbits. A first experiment aimed to study the effect of the pharmacological inhibitor of MEK signaling (PD0325901) on ESC line derivation. ICMs were isolated by immunosurgery from 576 blastocysts and plated onto gelatin- or fibronectin-coated dishes in various media (DMEM/F12 + 20% KOSR, N2B27) supplemented with GSK3 β inhibitor (CHIR99021), PD0325901, and LIF (2i/LIF), or not. 80% of the ICMs plated, but none could be expanded beyond passage 2. We concluded that inhibition of MEK signaling fails to prevent spontaneous differentiation of pluripotent stem cells in rabbit. A second experiment aimed to study the effect of LIF on ESC line derivation. We collected 262 ICMs, which were plated onto growth-inactivated mouse embryonic fibroblasts in DMEM/F12 supplemented with 20% KOSR (72), 20% KOSR + LIF (90), or 10% KOSR + 10% FCS + LIF (80). No outgrowth cultured in media lacking LIF could be expanded beyond passage 4. By contrast, 7 ESC lines were derived from outgrowths cultured and expanded in the presence of LIF, 2 in 20% KOSR + LIF, and 5 in 10% KOSR + 10% FCS + LIF. Two lines, designated rbES-LIF1 and rbES-LIF2, were expanded by gentle dissociation with collagenase until passage 40, and showed a normal karyotype. RbES-LIF1 and rbES-LIF2 displayed the cardinal features of pluripotent stem cells, *i.e.* expression of pluripotency markers, differentiation into derivatives of the 3 germ layers, and teratoma formation. However, they could not be cultured onto gelatin-coated dishes, they did not express markers (*Zfp42*, *Klf4*, *Pecam1*, *Dazl1*) associated with naïve pluripotency in rodents, and they did not survive in 2i/LIF medium. We concluded that LIF facilitates the derivation of ESCs but does not support naïve pluripotency in rabbits. When rbES-LIF1 and rbES-LIF2 cells were propagated for 20 passages in 10% KOSR + 10% FCS + LIF, and were enzymatically dissociated with Acutase into single cell suspensions, they acquired chromosomal abnormalities (43XX; 45XY). The same observation was made with 5 freshly derived ESC lines in 10% KOSR + 10% FCS + LIF with Acutase, of which 3 displayed abnormal chromosome numbers. We concluded that LIF-dependent rabbit ESCs cannot be propagated under stringent conditions without chromosomal rearrangement-based adaptation.

THE RABBIT PRE IMPLANTATION EMBRYO AS A PARADIGM TO EXPLORE NAIVE EMBRYONIC STEM CELL DERIVATION IN NON RODENT SPECIES

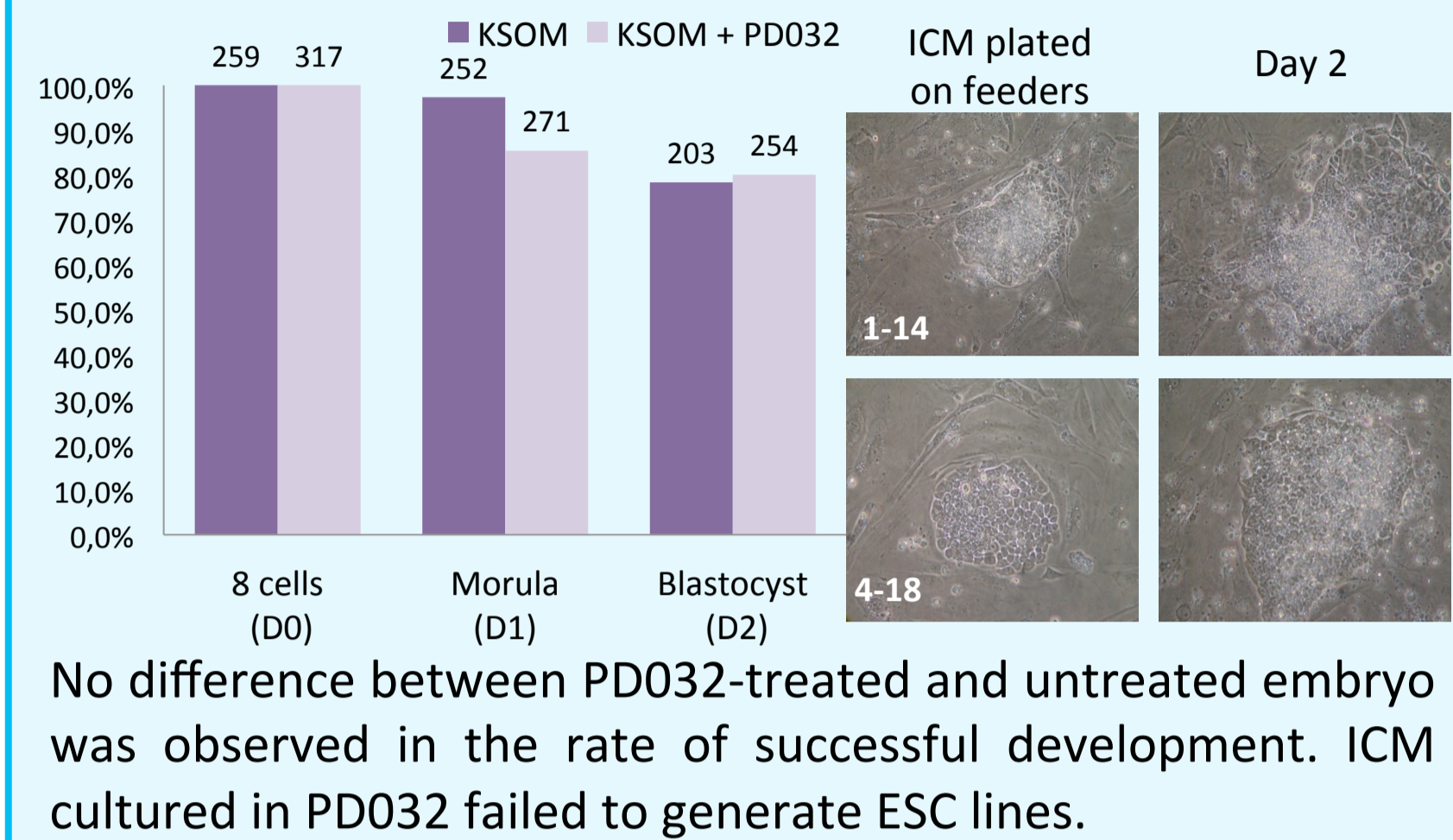
OSTEIL Pierre¹, TAPPONNIER Yann¹, MOULIN Anaïs¹, JOLY Thierry², SAVATIER Pierre¹, AFANASSIEFF Marielle¹

¹Stem cell and Brain Research Institute, INSERM U846, INRA USC1361, BRON, France, ²VetAgroSup, UPSP ICE, ISARA-Lyon, Lyon, France

INTRODUCTION: Rabbit is a good model to improve embryonic stem cell (ESC) derivation in non-rodent species, as it can produce up to 30 embryos per super-ovulated females. All rabbit ESC line produced so far showed the characteristics of primed pluripotency. In this work, we investigated the conditions suitable for the generation of naïve ESCs in rabbits.



I- Pre-implantation embryo development, and ICM growth after plating onto feeders (+/- MEK inhibition with PD032)

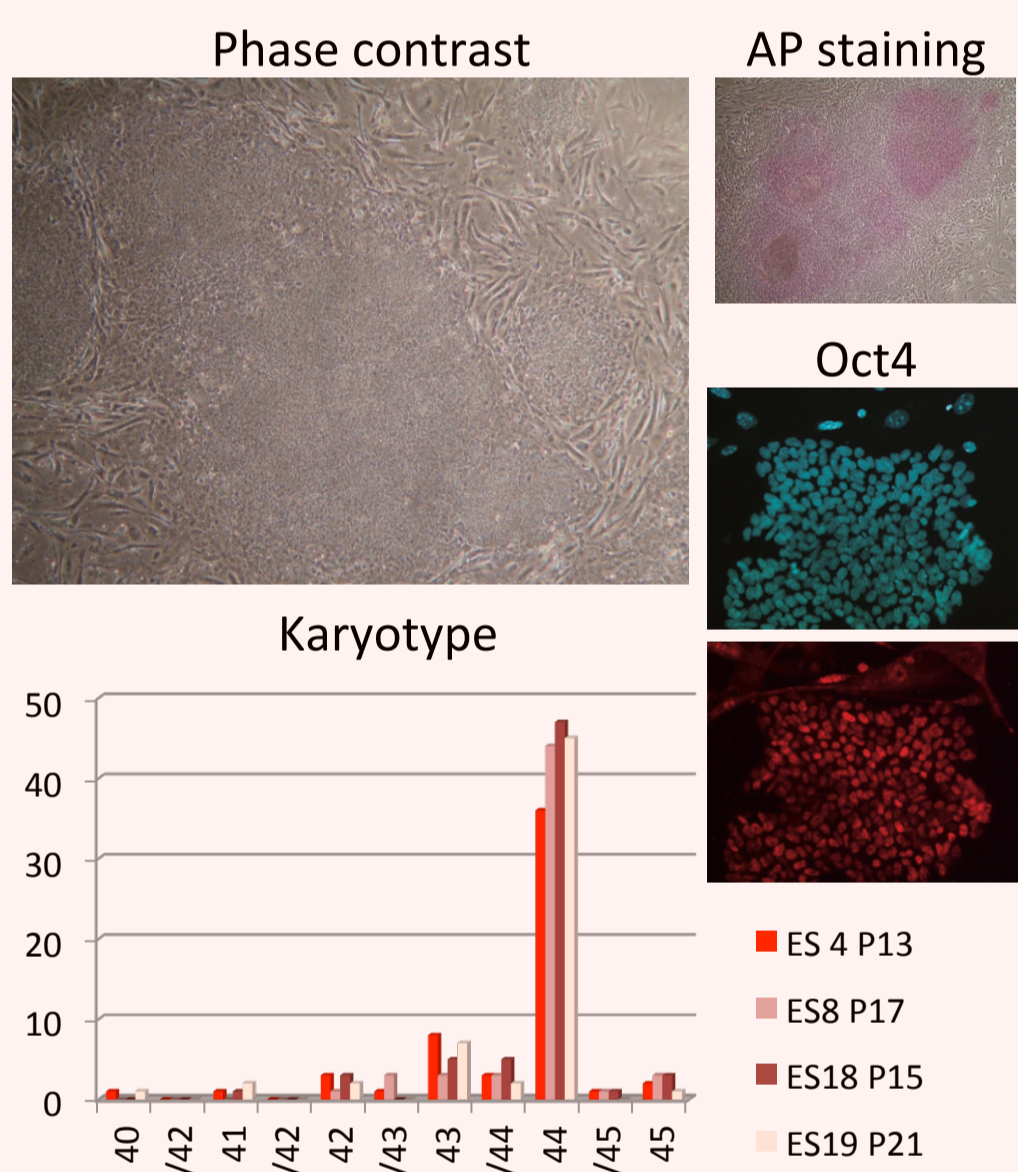


II-RbESC-FGF

A) Culture conditions

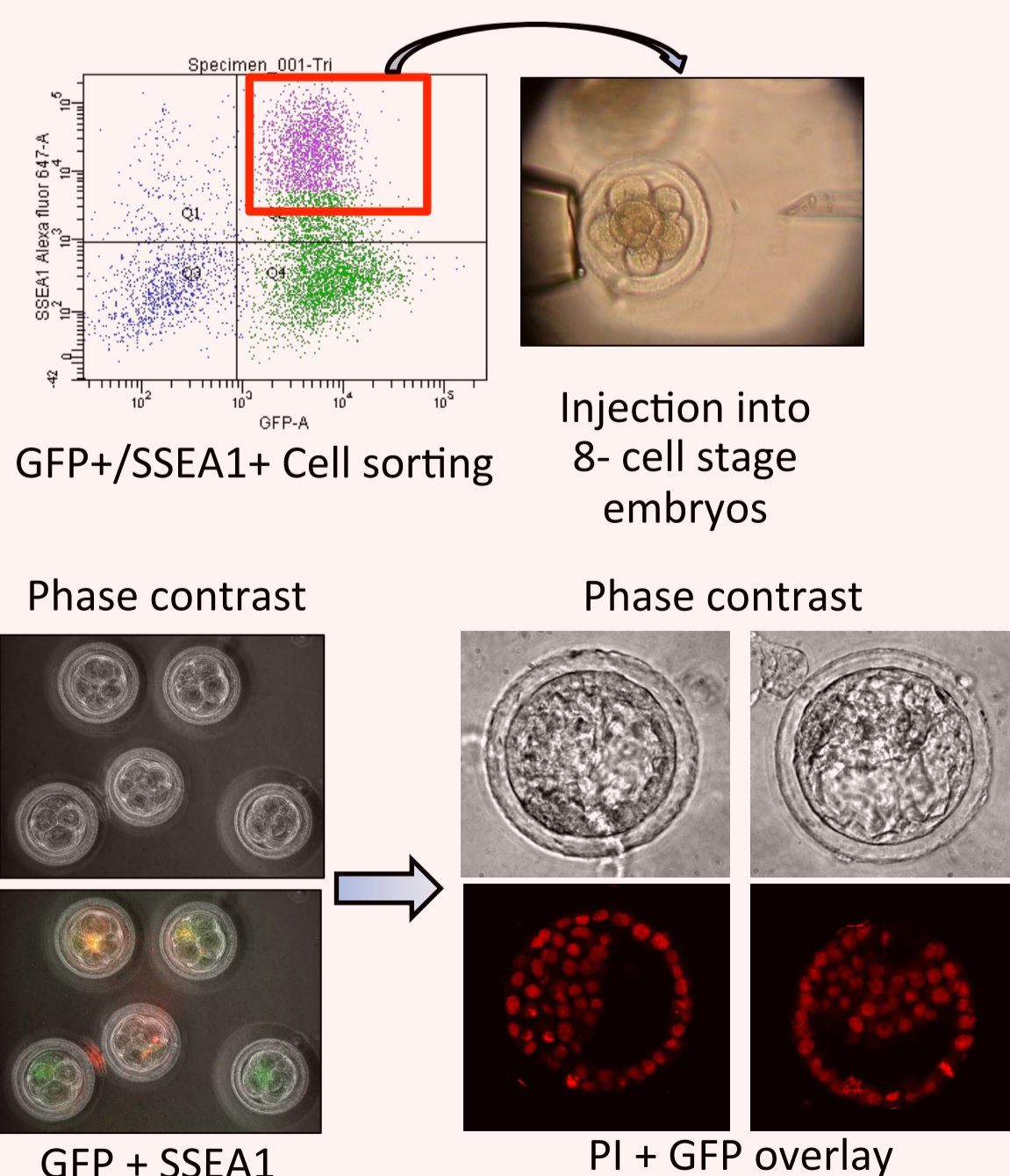
Serum: 20% KOSR
Growth factor: FGF2
Feeders: MEF (from OF1 mice)
Passaging method: Clumps (Collagenase)

B) Characterization



RbESC-FGF cells display the cardinal features of embryonic stem cells. *Osteil, Tapponnier, Markossian et al. Induced pluripotent stem cells derived from rabbits exhibit some characteristics of naïve pluripotency (2013) Biology Open doi: 10.1242/bio.20134242*

C) ICM colonization after injection into 8-cell stage embryos

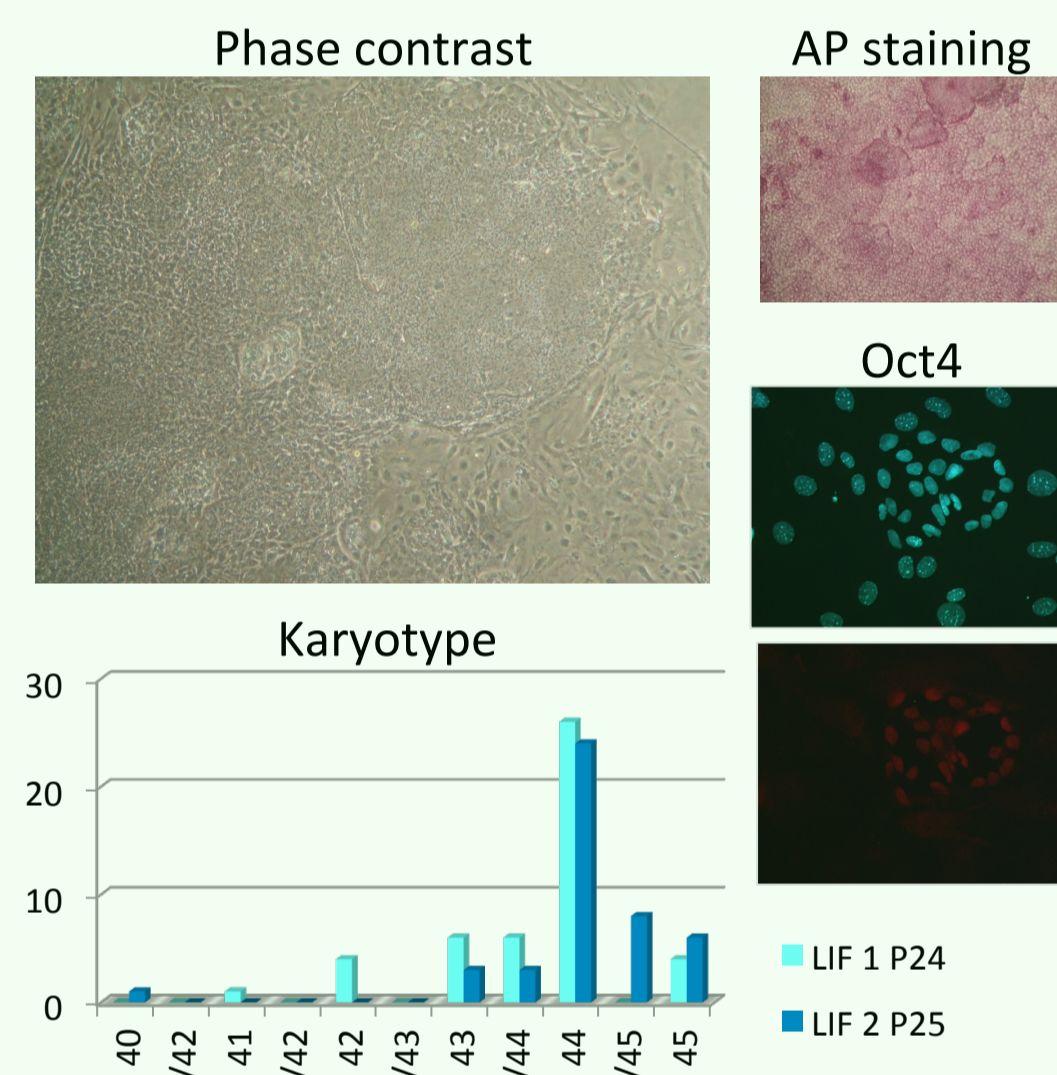


III-RbESC-LIF

A) Culture conditions

Serum: 20% KOSR
Growth factor: LIF
Feeders: MEF (from OF1 mice)
Passaging method: Clumps (Collagenase)

B) Characterization



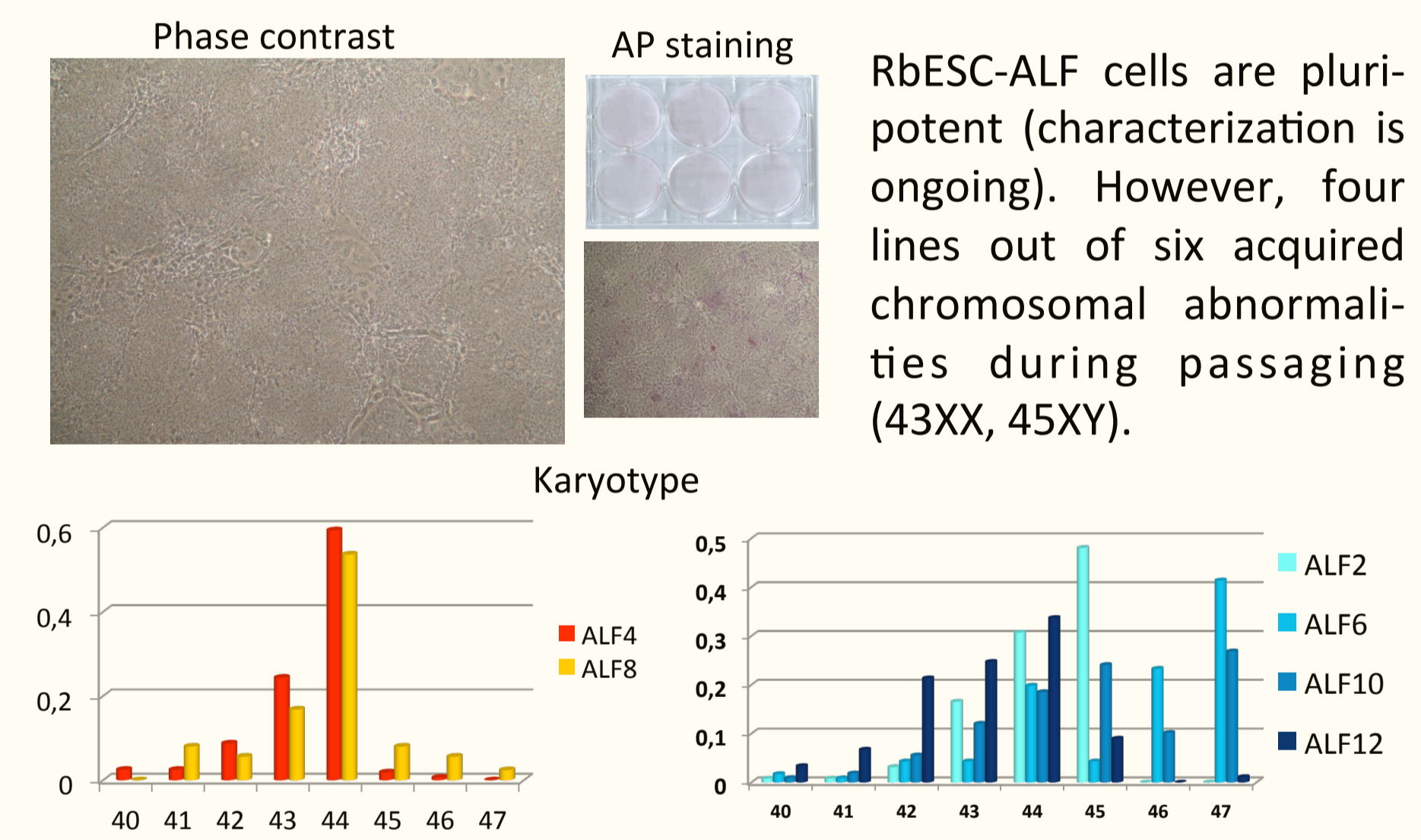
RbESC-LIF cells display the cardinal features of embryonic stem cells. They express pluripotency markers, they form teratomas, and they have a stable karyotype (44XY).

IV-RbESC-ALF

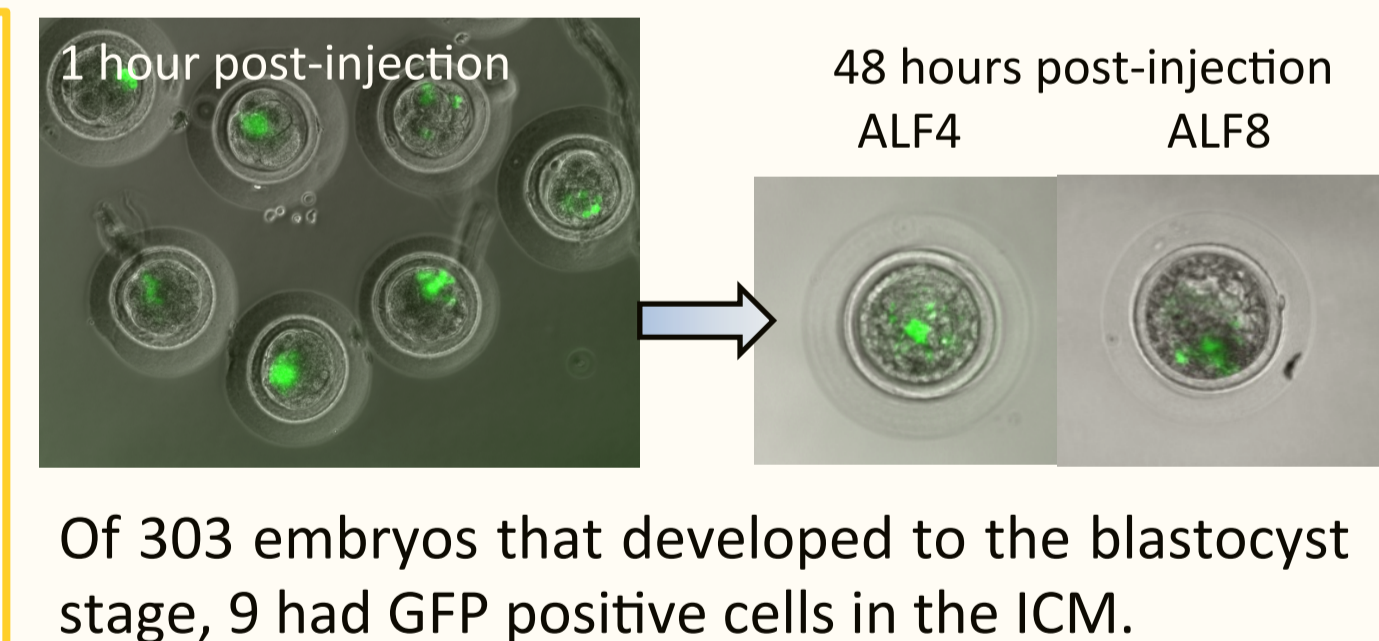
A) Culture conditions

Serum: 10% KOSR + 10% FCS
Growth factor: LIF
Feeders: MEF (from OF1 mice)
Passaging method: Single cell suspension (Accutase)

B) Characterization

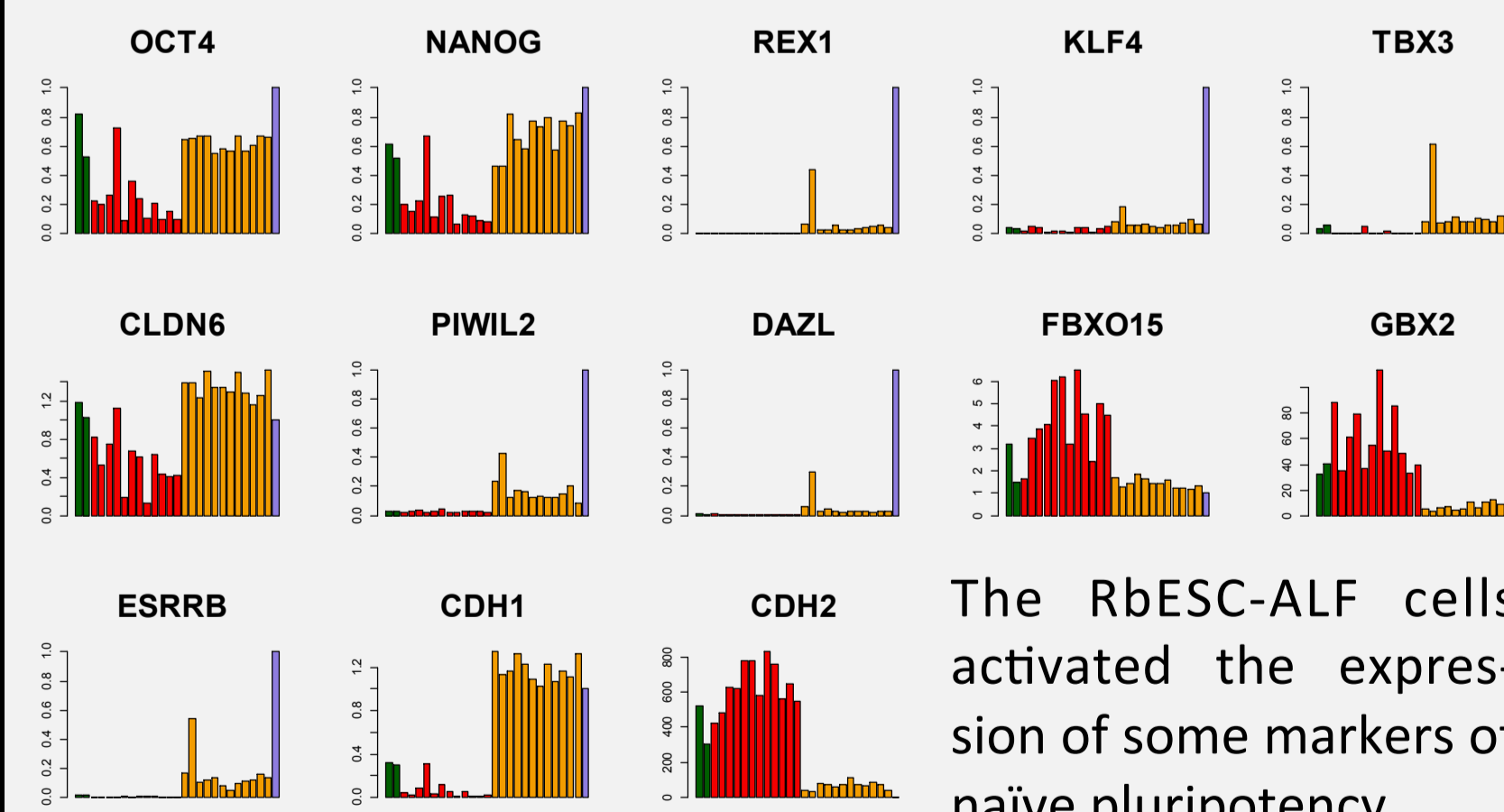


C) ICM colonization after injection into 8-cell stage embryos

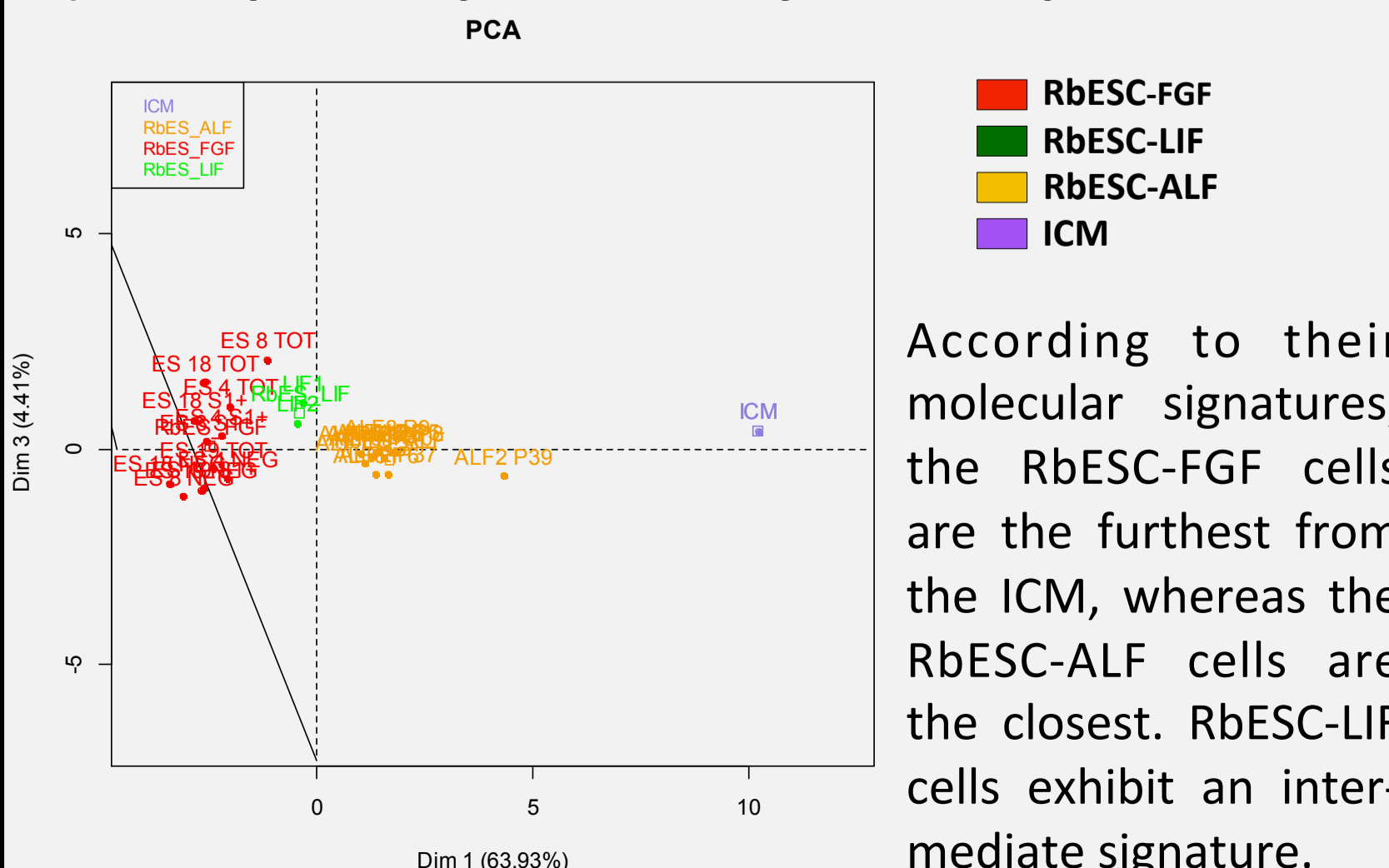


V- Gene expression analysis

A) Barplots from qPCR data



B) Principal Component Analysis from qPCR data



CONCLUSIONS:

- 1/ Inhibition of MEK signaling prevents ICM outgrowths from generating ESCs in rabbit.
- 2/ Rabbit ESCs derived in FCS on feeders, and dissociated to single cell suspension during passaging (RbESC-ALF), exhibit an elevated expression of genes whose expression is associated with naïve pluripotency in rodents.
- 3/ RbESC-ALF cells can colonize the ICM of the rabbit blastocyst following injection into 8-cell stage embryos.

ACKNOWLEDGMENTS: This work was supported by ANR (project PLURABBIT no. PCS-09-GEM-08, LABEX DEVWECAN no. ANR-10-LABX-0061, LABEX CORTEX no. ANR-11-LABX-0042, Investissements d'Avenir no. ANR-11-IDEX-0007), COST Action (RGB-Net no. TD1101), and the HyPharm Company (PhD Grant INRA/HyPharm no. 04012010).