



**HAL**  
open science

## How does climate influence the phenotypic variability of larch along an altitudinal gradient ?

Maxime Nardin, Luc Pâques, Leopoldo Sanchez Rodriguez, Frederic F. Huard,  
Jean-Paul J.-P. Charpentier, Sara Marin, Nathalie Mayeur, Philippe P.  
Rozenberg

### ► To cite this version:

Maxime Nardin, Luc Pâques, Leopoldo Sanchez Rodriguez, Frederic F. Huard, Jean-Paul J.-P. Charpentier, et al.. How does climate influence the phenotypic variability of larch along an altitudinal gradient ?. *Larix* 2012;8. International Symposium of IUFRO Working Group S2.02.07 – Larch Breeding and Genetic Resources, International Union of Forest Research Organisations (IUFRO). AUT., Sep 2012, Hallormsstaðaskógur National Forest, Iceland. hal-02749143

**HAL Id: hal-02749143**

**<https://hal.inrae.fr/hal-02749143>**

Submitted on 3 Jun 2020

**HAL** is a multi-disciplinary open access archive for the deposit and dissemination of scientific research documents, whether they are published or not. The documents may come from teaching and research institutions in France or abroad, or from public or private research centers.

L'archive ouverte pluridisciplinaire **HAL**, est destinée au dépôt et à la diffusion de documents scientifiques de niveau recherche, publiés ou non, émanant des établissements d'enseignement et de recherche français ou étrangers, des laboratoires publics ou privés.

# How does climate influence the phenotypic variability of larch along an altitudinal gradient ?

Maxime Nardin\*, Luc E, Pâques\*, Leopoldo Sanchez\*, Frédéric Huard<sup>+</sup>, Jean-paul Charpentier, Sara Marin\*, Nathalie Mayeur\*, Philippe Rozenberg\*

\* INRA Orléans, UR0588, Unité Amélioration Génétique et Physiologie Forestières

<sup>+</sup> INRA PACA, US1116 AGROCLIM



*Larix decidua*

# Study Context

➤ General objective :

Determine biological adaptive potential of larch population to climate change

➤ Several approaches possible: experimental trial, biogeographic gradient...

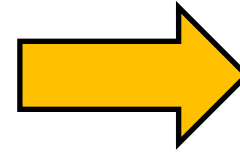
We choose to study in natural population along an altitudinal gradient:

- Natural population in their own environment, old trees
- Strong environmental variations (mainly temperature), possible pressures of selection, adaptation ?
- Low geographic distance, same photoperiod, probable weak soil differences
- Other variables: competition, insect attack...
- Neutral evolutionary processes can influence phenotypic variability (as genetic drift)

# 2 axis of variation of temperature

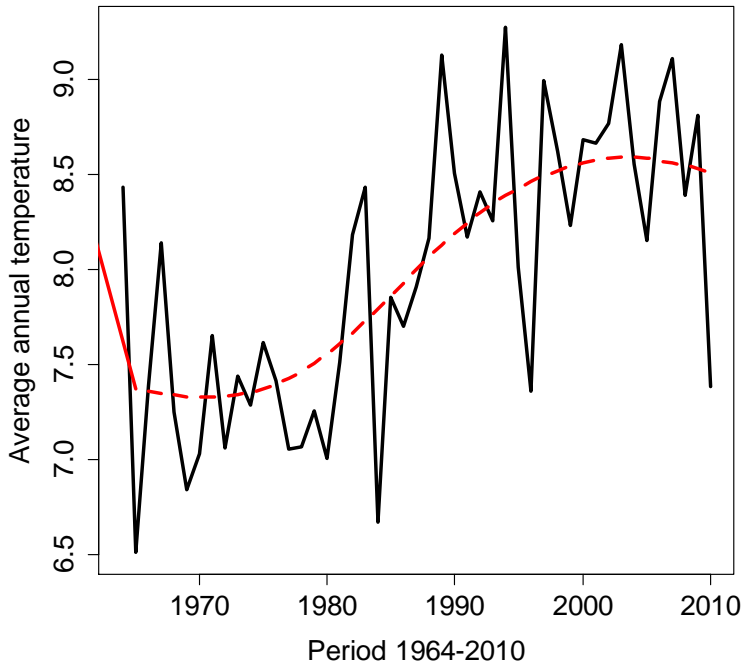
Temperature fluctuates:

- In space (along altitudinal gradient)
- in time (between years)



can affect phenotypic variability

Evolution of temperature in Briançon



# Microdensity approach

- Provide the information enclosed in the successive tree-rings
- Decode the phenotypic variability for each year as tree response to environmental change



**increment  
core**

Wood character may be related with **adaptive value** :

- **Ring width**

Highly integrative character. In certain conditions, an important growth may indicate a more favorable environment

- **Ring density**

Related to resistance to cavitation (Hacke et al, 2001, Dalla-Salda et al, 2011)

# Objective of this study

Is there phenotypic variability for ring width along an altitudinal gradient of larch ?

- Could nonselective evolutionary processes and/or selective pressures explain phenotypic variability along the altitudinal gradient ?
  - Is there a more favorable altitude for larch ? If yes, where is this altitude ?
  - How does it vary along years?
- Is the relationship observed along the gradient (space) consistent with the one observed along the years ?



# Materials and Methods: altitudinal gradient

2300 m



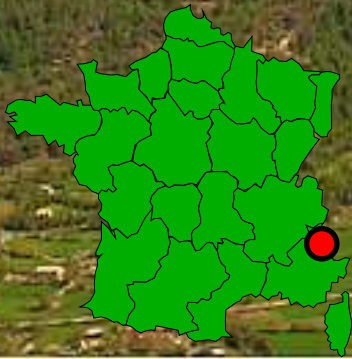
2000 m



1700 m



1350 m

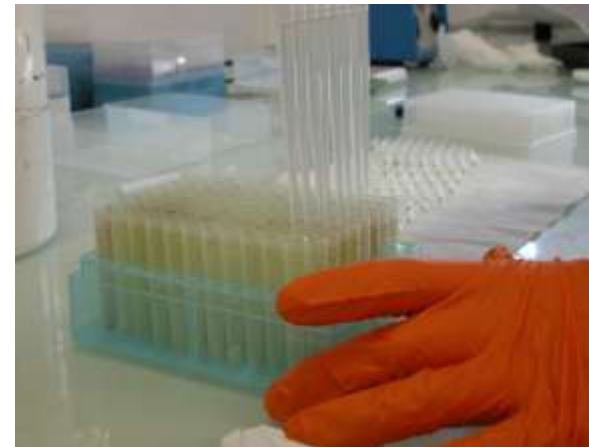


**Briançon**

# Materials and Methods

## Neutral evolutionary process

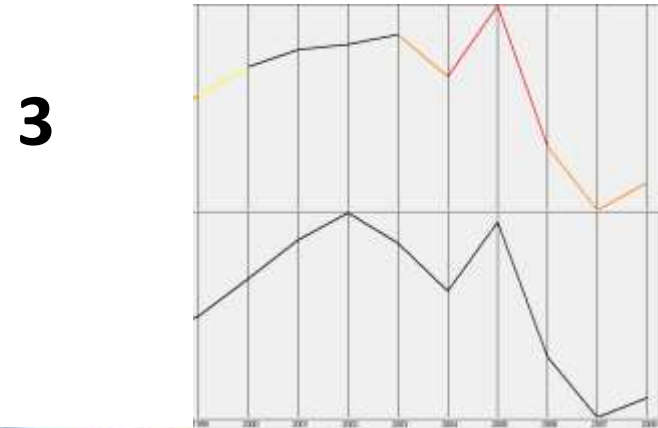
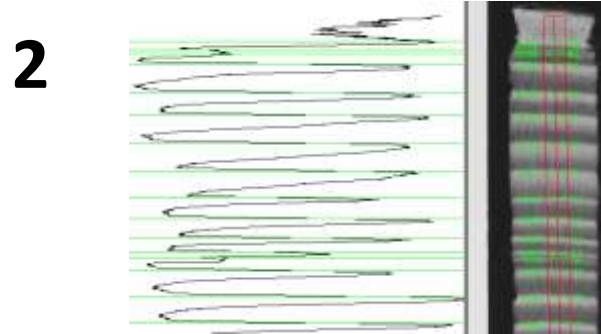
- Neutral diversity :
  - 11 microsatellites markers,  
788 trees (175 - 212 individuals  
per altitudinal levels)
  - Analyses :
    - Diversity index,  
Heterogeneity expected  
( $H_e$ )
    - AMOVA (Excoffier, 1992)





# Materials and Methods - Microdensity

- 1 - X-Ray radiography (Ploge 1966)
- 2 - Windendro 2008e Regent instruments Canada inc,
- 3 - Interdat,exe version 1.1, Jean-Luc Dupouey



## Ring analysis :

- 555 trees (130 -155 individuals for each altitudinal levels)
- 41 ring per tree (41 years → 1967-2007)

# Materials and Method - Others factors

- **Cambial age**
  - each ring have a distinct cambial age
- **Competition**
  - For each tree, we have associated a competition index
  - Here, competition index is derived by CI of Hegyi 1974:

$$\text{Competition index } i = \text{Sum} ( ( \text{diameter } j ) / \text{distance } ij )$$

with only competitors with diameter upper the  $0,8 * \text{the diameter of the tree studied}$  in the distance of 14 meters.

- **Insect attack**
  - years with insect attack are identified (*Zeiraphera diniana*)

→ **adjusted data**

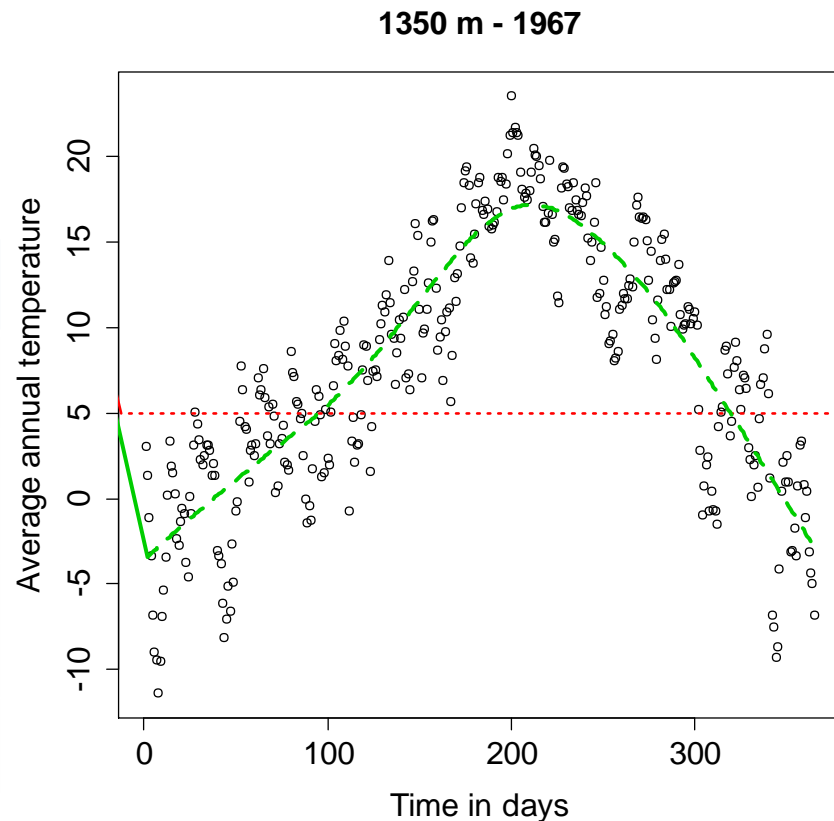
- **Soil difference + Solar radiation difference → Observed but no adjusted**

# Materials and Methods : definition of growing season (GS)

For conifers in cold climate, xylogenesis begins at temperature above 5°C (Rossi et al, 2008)

Definition of the growing season: Temperature above 5°C

	1350m	1700m	2000m	2300m
T°C	12.13	11.36	10.25	9.19
length of GS	218	197	168	145
Beginning of GS	96	110	128	143
End of GS	314	307	297	288



# Adjustment of other factors

- We test the effect of each variable, successively

	F value	significance	R2	improvement	significance
Cambial age (AC)	2723,948	***	0,089	-	-
Competition index (CI)	2491,457	***	0,170	2199	***
Insect attack (IA)	1389,690	***	0,261	1377,4	***
AC.CI	69,138	***	0,263	68,733	***
AC.IA	27,930	***	0,265	27,833	***
CI.IA	40,002	***	0,268	40,002	***

## ANOVA Model:

- $$Y_{ijkl} = \mu + AC_i + CI_j + IA_k + (AC,CI)_{ij} + (AC,IA)_{ik} + (CI,IA)_{jk} + E_{ijkl}$$



# Results: Influence of neutral evolutionary process

## Results:

- High genetic diversity
- Low difference in diversity between altitudinal levels
- Very low differentiation ( $F_{st}$  General = 0,0152 \*\*\*, AMOVA)

Altitude	Ho	He
2300 m	0,741 (SE : 0,034)	0,739 (SE : 0,029)
2000 m	0,740 (SE : 0,038)	0,757 (SE : 0,033)
1700 m	0,739 (SE : 0,029)	0,761 (SE : 0,027)
1350 m	0,742 (SE : 0,016)	0,751 (SE : 0,015)
<b>total</b>	0,742 (SE : 0,031)	<b>0,761</b> (SE : 0,029)

## Conclusions:

- Drift and mutations do not influence phenotypic variability / important gene flow
- Hypothesis "adaptive phenotypic variability along the gradient resulting from selection pressure" can not be rejected

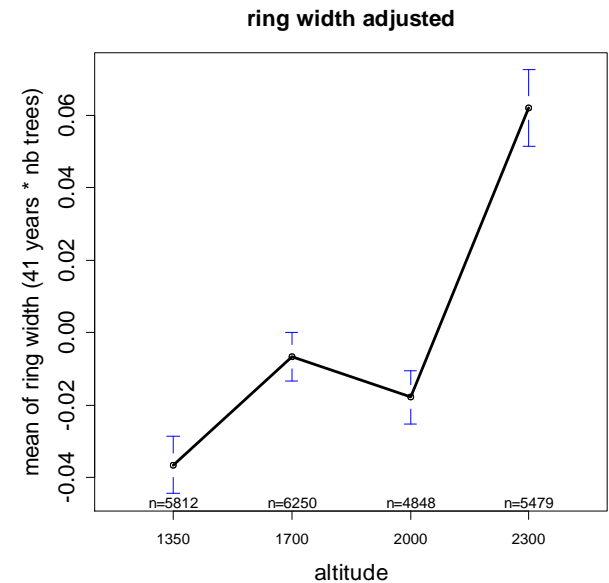
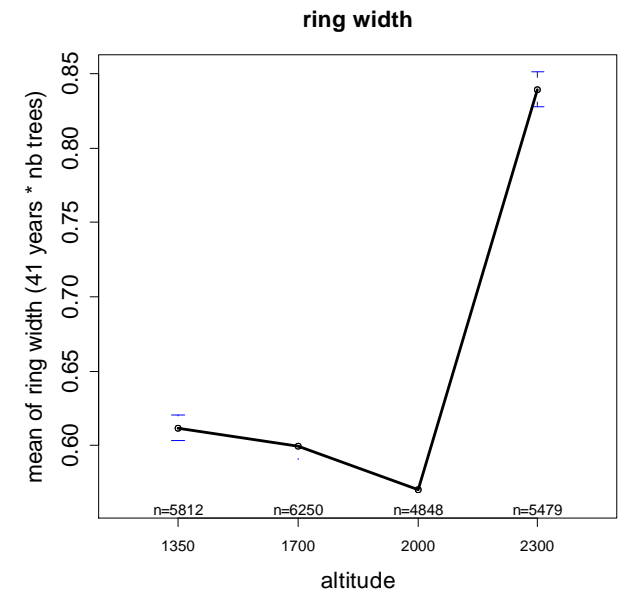
# Results: ring width and spatial variability

ANOVA to test phenotypic variability

$$(Ring\_width)_{ij} = \mu + (altitudinal\_levels)_i + E_{ij}$$

Ring width	F_value	p_value
raw	895,8	< 2,2e-16 ***
adjusted	231,43	< 2,2e-16 ***

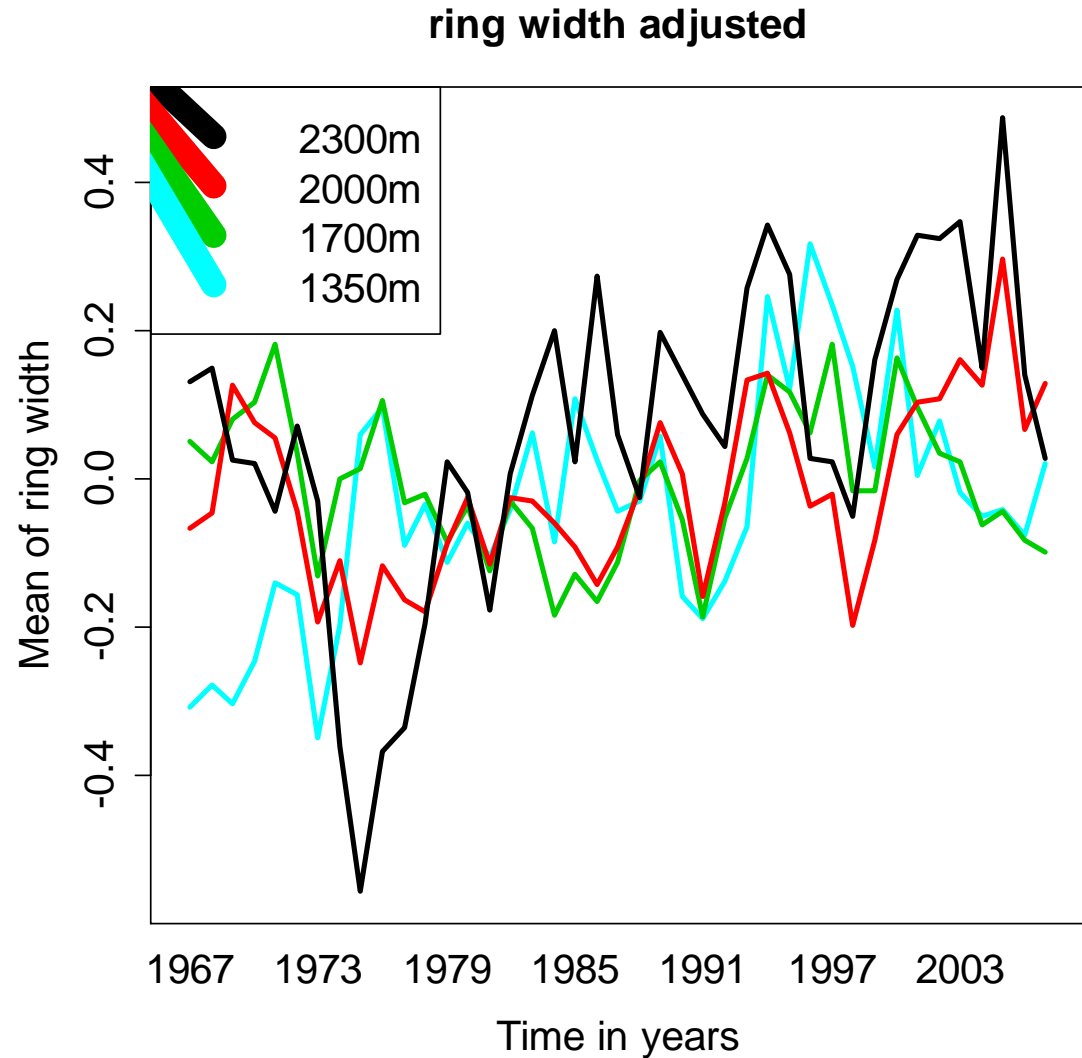
- Existence of phenotypic variability along this gradient
- In general, altitude most favorable to larch is at the highest altitude (2300m)



# Spatial \* temporal variability

- optimum of growth can be modified between years
- Confirmation of optimal growth à 2300m

optimum_growth	number_years
2300	20
1700_1350	5
No optimum	4
1350	3
Others	< 3



# Effect of climate in temporal phenotypic variability

	temperature	precipitation
2300m	0,40 (0.01 *)	-0.07 (0.66 ns.)
2000m	0.27 (0.08 ns.)	-0.26 (0.10 ns.)
1700m	-0.12 (0.45 ns.)	-0.004 (0.98ns.)
1350m	0.15 (0.33 ns.)	0.10 (0.52 ns.)
All levels	-	-

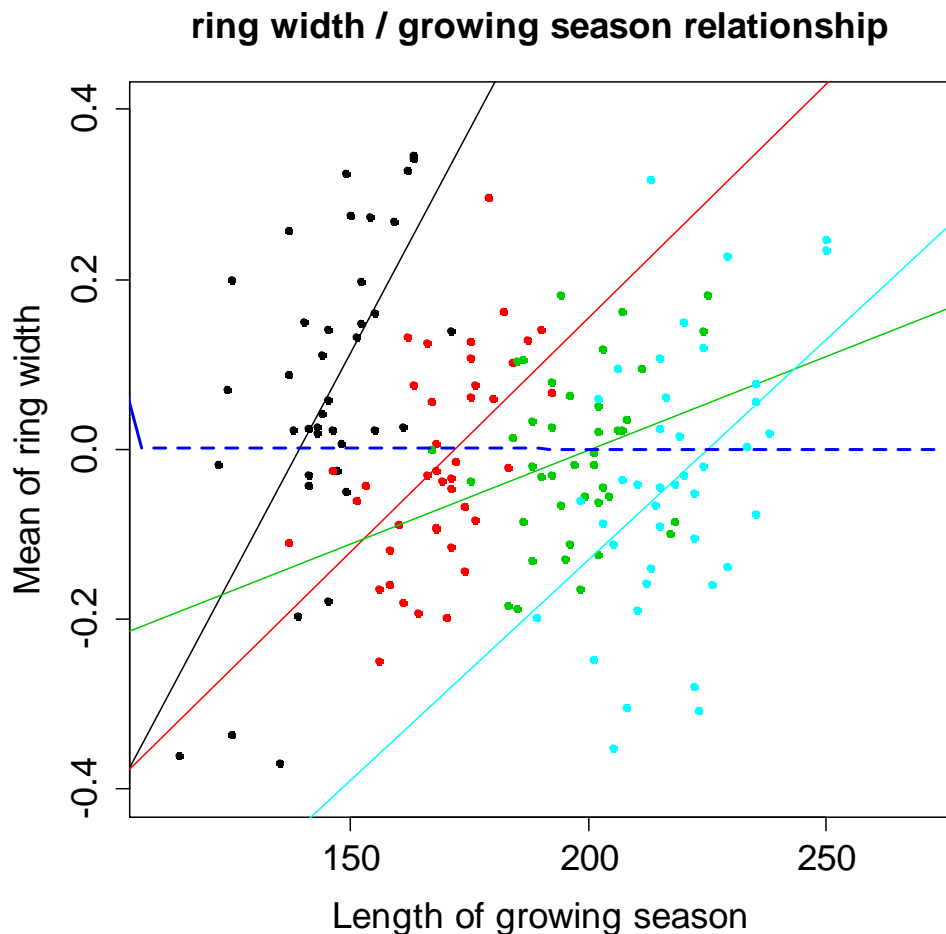
- Temperature and precipitation are low explicative factor



# Effect of climate in phenotypic variability

	Length growing season
<b>2300m</b>	0.61 (2.6e-05 ***)
<b>2000m</b>	0.53 (0.0003 ***)
<b>1700m</b>	0.27 (0.08 ns.)
<b>1350m</b>	0.44 (0.004 **)
<b>All levels</b>	-0,002 (0,98 ns.)

- Length of the growing season is the most explicative factor
- Positive and significant relationship within altitudinal levels VS no relationship for all levels



# Discussion

- Strong relationship ring width / length of growing season observed within altitudinal levels, with stronger relationship for populations of high altitude
    - This is an expected result, because the temperature is more limiting in altitude
  - High altitude appears as the most favorable environment despite lower temperature and shorter growing season
    - surprising result...
- The relation ring width / temperature observed through space and time are inconsistent. Why ?

# Discussion

- The relation ring width / temperature observed through space and time are inconsistent. Why ?
- Insufficient adjustment or omission of a factor?
  - Younger trees on the highest plot. need to confirm the validity of adjustments (created age groups ....)
- The differences of temperature along this gradient does not play a role in phenotypic variability ?
  - tree height
  - Ring density (for the coherence time / space)
- Transplantation experiment could confirm or refute this trend



# Thanks for you attention...

Study funded by :

- Ministère de l'Agriculture, Dendro PAF
- Ministère de L'Ecologie, GICC GRAAL
- Projet Européen BACCARA
- Projet ECOS-Sud France-Argentine
- Région Centre



# Others factors

Altitude	profundity (cm)	% fine soil	chemical fertility
2300m	55	48,3	9,1
2000m	60	49,1	9,6
1700m	60	48,9	13
1350m	35	55	7,8

Solar radiation per altitude

