



**HAL**  
open science

## **Somatic embryogenesis of forest trees in Europe: what's going on? An overview**

Marie-Anne Lelu-Walter, Luc Pâques, David Thompson, Luc Harvengt

### ► **To cite this version:**

Marie-Anne Lelu-Walter, Luc Pâques, David Thompson, Luc Harvengt. Somatic embryogenesis of forest trees in Europe: what's going on? An overview. IUFRO Working Party 2.09.02 : Somatic Embryogenesis of Forest Trees Conference, Aug 2010, Suwon, South Korea. <hal-02751970>

**HAL Id: hal-02751970**

**<https://hal.inrae.fr/hal-02751970v1>**

Submitted on 3 Jun 2020

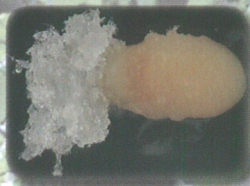
**HAL** is a multi-disciplinary open access archive for the deposit and dissemination of scientific research documents, whether they are published or not. The documents may come from teaching and research institutions in France or abroad, or from public or private research centers.

L'archive ouverte pluridisciplinaire **HAL**, est destinée au dépôt et à la diffusion de documents scientifiques de niveau recherche, publiés ou non, émanant des établissements d'enseignement et de recherche français ou étrangers, des laboratoires publics ou privés.



HAL Authorization

IUFRO Working Party 2.09.02:  
Somatic Embryogenesis of Forest Trees Conference



# Advances in Somatic Embryogenesis of Trees and Its Application for The Future Forests and Plantations

August 19-21, 2010, Suwon, Korea

## Conference Program



## **Somatic embryogenesis of forest trees in Europe: what's going on? An overview**

MA Lelu-Walter<sup>(1)</sup>, Luc Pâques<sup>(1)</sup>, David Thompson<sup>(2)</sup>, Luc Harvengt<sup>(3)</sup>

<sup>(1)</sup> Research Unit on Breeding, Genetic and Physiology of Forest Trees, France;  
Leluwa@orleans.inra.fr

<sup>(2)</sup> COILLTE TEORANTA, Ireland; David.Thompson@coillte.ie

<sup>(3)</sup> FCBA Technological Institute, France; Luc.HARVENGT@fcba.fr

Invited Oral presentation MA Lelu-Walter

Development of clonal propagation methods, such as somatic embryogenesis, has potentially numerous applications and advantages over conventional rooted cuttings (Klimaszewska *et al.* 2007). The speed at which a new material can be produced, the high potential of amplification make somatic embryogenesis a powerful and flexible tool for the release of improved varieties. Indeed, this efficient method of plant regeneration constitutes a tool for research (study of gene function) and for species improvement (production of a large number of genetically improved plants). Somatic embryogenesis can contribute to increase selection efficiency and facilitate deployment of improved varieties. Somatic embryogenesis has in many instances become the method of choice for clonal propagation of conifers (Sutton 2002). Its deployment is now achieved in Canada (CellFor, JD Irving), United States (Arborgen, Weyerhaeuser) where millions of emblings are routinely produced (*Picea* sp., *Pinus* sp., *Pseudotsuga menziesii*).

By comparison, it was interesting to make the point of advances made in Europe. Therefore, in the frame of the European project Treebreedex (<http://treebreedex.eu>), a review has been made on somatic embryogenesis in both Angiosperm and Gymnosperms forest tree species, results that will be presented today.

Comment citer ce document :

Lelu-Walter, M.-A., Pâques, L., Thompson, D., Harvengt, L. (2010). Somatic embryogenesis of forest trees in Europe: what's going on? An overview. In: Advances in Somatic Embryogenesis of Trees and Its Application for the future forests and plantations. Conference Program (p. p. 20). Presented at IUFRO Working Party 2.09.02 : Somatic Embryogenesis of Forest Trees