



HAL
open science

BRC4Env, un réseau de Centres de Ressources Biologiques et de collections dédié aux ressources environnementales

Christian Mougin, Emmanuelle Artige, Céline Faivre-Primot, Frédéric Marchand, Samuel Mondy, Céline Ratié, Frédéric Rimet, Nadine Sellier

► To cite this version:

Christian Mougin, Emmanuelle Artige, Céline Faivre-Primot, Frédéric Marchand, Samuel Mondy, et al.. BRC4Env, un réseau de Centres de Ressources Biologiques et de collections dédié aux ressources environnementales. Le SEM 2018, Forum Santé, Environnement & Molécules, Oct 2018, Alixan, France. 2018. hal-02786220

HAL Id: hal-02786220

<https://hal.inrae.fr/hal-02786220v1>

Submitted on 4 Jun 2020

HAL is a multi-disciplinary open access archive for the deposit and dissemination of scientific research documents, whether they are published or not. The documents may come from teaching and research institutions in France or abroad, or from public or private research centers.

L'archive ouverte pluridisciplinaire **HAL**, est destinée au dépôt et à la diffusion de documents scientifiques de niveau recherche, publiés ou non, émanant des établissements d'enseignement et de recherche français ou étrangers, des laboratoires publics ou privés.



Distributed under a Creative Commons Attribution - ShareAlike 4.0 International License



Christian Mougin¹, Emmanuelle Artige², Céline Faivre-Primot³, Frédéric Marchand⁴, Samuel Mondy³, Céline Ratié⁵, Frédéric Rimet⁶, Nadine Sellier⁷
¹UMR ECOSYS, Versailles ; ²UMR CBGP, Montpellier ; ³UMR Agroécologie, Dijon ; ⁴UE U3E, Rennes ; ⁵US Infosol, Orléans ; ⁶UMR CARTELE, Thonon-les-Bains ; ⁷UMR ISA, Sophia Antipolis

contact-brc4env@inra.fr

• The network of Biological Resource Centres BRC4Env

BRC4Env is a network of **Biological Resource Centres** and **collections**, one of the 5 **specialized pillars** of the French **Research Infrastructure AgroBRC-RARE** (Ressources Agronomiques pour la Recherche).

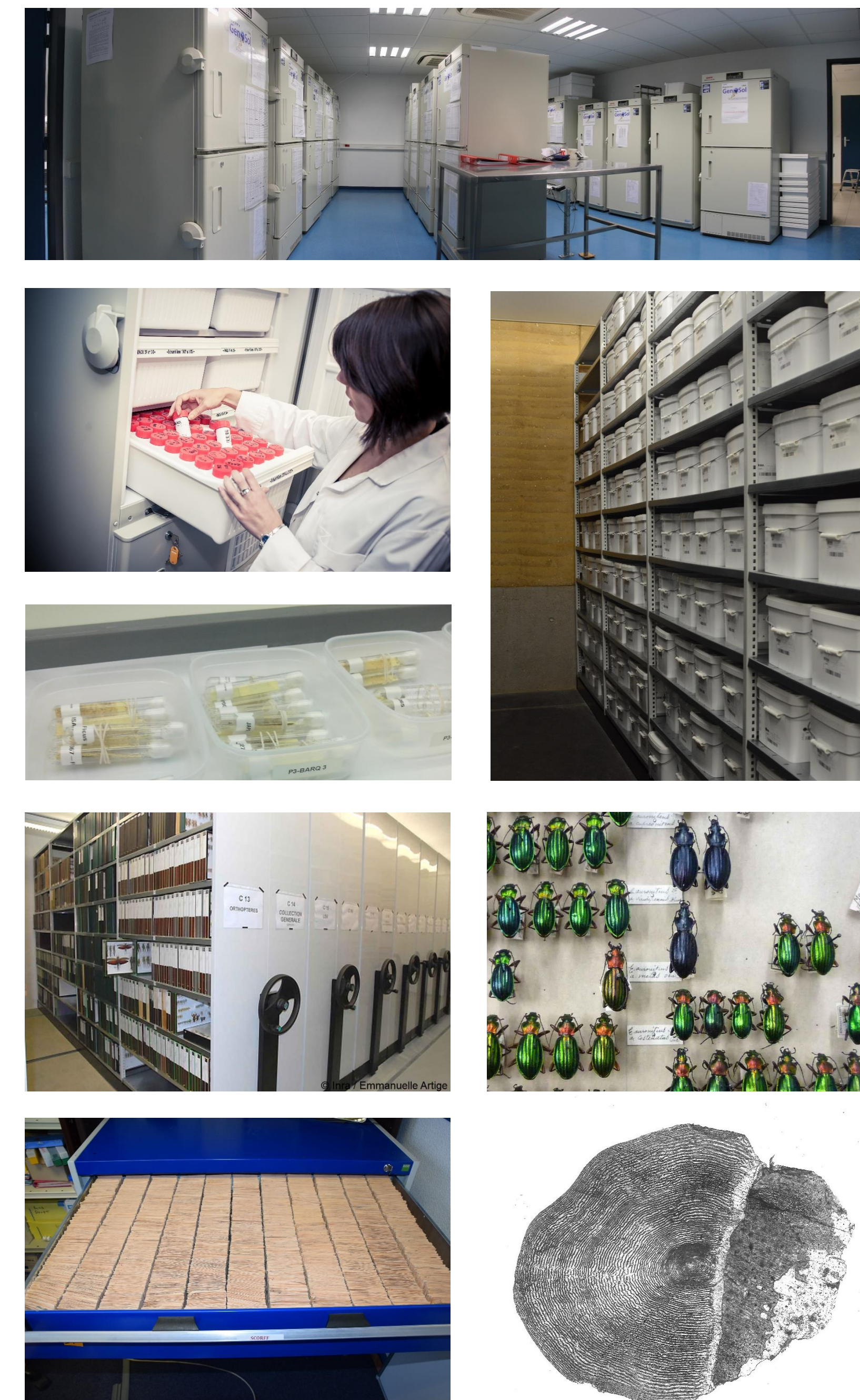
BRC4Env aims at **providing** a strategic **delivery of agro-environmental bioresources** for excellent and large-scale, fundamental and applied **research in environmental and agricultural sciences** in Europe. These biological and/or genomic resources are sampled from **soils, sediments, waters, agricultural and forest ecosystems...** and preserved in organized collections. They actually include microbial, animal (invertebrates and vertebrates) resources. BRC4Env provides these resources available for researchers from academia, but also industry, technology and additional sectors (NGOs, public society...).

• The Biological Resource Centres of BRC4Env

BRC4Env currently comprises 4 main BRCs:

- The Centre for **Soil Genetic Resources** of the platform **GenoSol** associated with the **European Centre for Soil Conservation**, a national BRC for soils **unique in Europe** for the storage and conservation of genetic resources (DNA) and soils,
- The Biological Resource Centre **Egg Parasitoids Collection** “EP-Coll”, that aims to collect, characterize, maintain, investigate and share egg parasitoids strains,
- The **Terrestrial Arthropod Collection** based insects and mites, comprising series of specimens gathered from all over the world during the last 50 years, preserved dry or in fluid and DNA extracts,
- The historical collection of **fish scales and tissues** “Colisa”, merging historical samples collected by various research units and long-term observatories , and by “Agence Française pour la Biodiversité”.

BRC4Env comprises several other biological collections (freshwater microalgae, small mammals, nematods...). All these BRCs/collections can be used for the characterization of the environment, but also for other purposes (biocontrol...).



• Associated analytical platforms and access to ecosystems



Analytical platforms are associated to BRC4Env for **sample characterization**, in:

- Environmental genomics, **GenoSol**
- Environmental chemistry, **Platinae**
- Environmental biochemistry, **Biochem-Env**
- Cellular et molecular imaging, **Dimacell**

Platinae

Dimacell

Access to ecosystems and *in natura* sites is allowed by:

- The Research Infrastructure **AnaEE-France**
- The research network in ECotoxicology-TOXicology **RECOTOX**



See also



<https://www.brc4env.fr/>
<https://doi.org/10.15454/TRBJTB>
<https://www.pluginlabs-universiteparisclay.fr/fr/entity/915006-the-biological-resource-centre-for-the-environment-brc4env/print>
<http://www6.inra.fr/agrobrc-rare/>



@AgroBRC_RARE

