



**HAL**  
open science

## Characterization of the early response of *Arabidopsis thaliana* to *Dickeya dadantii* infection using expression profiling.

Frédérique van Gijsegem, Frederique Bitton, Anne-Laure Laborie, Yvan Kraepiel, Jacques Pédrón

### ► To cite this version:

Frédérique van Gijsegem, Frederique Bitton, Anne-Laure Laborie, Yvan Kraepiel, Jacques Pédrón. Characterization of the early response of *Arabidopsis thaliana* to *Dickeya dadantii* infection using expression profiling.. 2018. hal-02786599

**HAL Id: hal-02786599**

**<https://hal.inrae.fr/hal-02786599>**

Preprint submitted on 5 Jun 2020

**HAL** is a multi-disciplinary open access archive for the deposit and dissemination of scientific research documents, whether they are published or not. The documents may come from teaching and research institutions in France or abroad, or from public or private research centers.

L'archive ouverte pluridisciplinaire **HAL**, est destinée au dépôt et à la diffusion de documents scientifiques de niveau recherche, publiés ou non, émanant des établissements d'enseignement et de recherche français ou étrangers, des laboratoires publics ou privés.



Distributed under a Creative Commons Attribution - NonCommercial 4.0 International License

1 Characterization of the early response of *Arabidopsis thaliana* to *Dickeya dadantii* infection  
2 using expression profiling

3 Frédérique Van Gijsegem <sup>1,2</sup>, Frédérique Bitton <sup>3</sup> Anne-Laure Laborie <sup>2</sup>, Yvan Kraepiel <sup>1,2</sup> \*  
4 and Jacques Pédrón <sup>1,2</sup> \*

5

6 1- Sorbonne Université, Institute of Ecology and Environmental sciences-Paris, 4 place  
7 Jussieu, F-75 252 Paris, France

8 2- INRA, AgroParis Tech, Interactions Plantes-Pathogènes (UMR217), 16 rue Claude  
9 Bernard, F-75231 Paris CEDEX 05, France

10 3- Unité de Génétique et d'Amélioration des Fruits et Légumes, F-84143 Montfavet, France

11

12 \* YK and JP contributed equally to this work

13

14 Running head: Early response of *Arabidopsis* to *D. dadantii* infection

15

16 Correspondence to:

17 Jacques Pédrón (jacques.pedron@sorbonne-universite.fr), Yvan Kraepiel  
18 (yvan.kraepiel@sorbonne-universite.fr)

19 Tel: (33) 1 44 27 41 67

20

21 Keywords: *Arabidopsis thaliana*, *Dickeya dadantii*, *Erwinia chrysanthemi*, transcriptome  
22 analysis, indole glucosinolates, jasmonates, soft rot disease.

23

24 Abbreviations:

25 IGs indole glucosinolates

- 1 ROS reactive oxygen species
- 2 PR pathogenesis-related
- 3 ET ethylene
- 4 T#SS type # secretion system
- 5 PCD plant cell death
- 6 hpi hours post inoculation
- 7 MAMPs microbe-associated molecular patterns

# 1 **Abstract**

2 To draw a global view of plant responses to interactions with the phytopathogenic  
3 enterobacterale *Dickeya dadantii*, a causal agent of soft rot diseases on many plant species,  
4 we analysed the early *Arabidopsis* responses to *D. dadantii* infection. We performed a  
5 genome-wide analysis of the *Arabidopsis thaliana* transcriptome during *D. dadantii* infection  
6 and conducted a genetic study of identified responses.

7 A limited set of genes related to plant defence or interactions with the environment were  
8 induced at an early stage of infection, with an over-representation of genes involved in both  
9 the metabolism of indole glucosinolates (IGs) and the jasmonate (JA) defence pathway.  
10 Bacterial type I and type II secretion systems are required to trigger the induction of IG and  
11 JA-related genes while the type III secretion system appears to partially inhibit these defence  
12 pathways. Using *Arabidopsis* mutants impaired in JA biosynthesis or perception, we showed  
13 that induction of some IG metabolism genes was COI1-dependent but, surprisingly, JA-  
14 independent. Moreover, characterisation of *D. dadantii* disease progression in *Arabidopsis*  
15 mutants impaired in JA or IG pathways showed that JA triggers an efficient plant defence  
16 response that does not involve IGs.

17 The induction of the IG pathway by bacterial pathogens has been reported several times *in*  
18 *vitro*. This study shows for the first time, that this induction does indeed occur *in planta*, but  
19 also that this line of defence is ineffective against *D. dadantii* infection, in contrast to its role  
20 to counteract herbivorous or fungal pathogen attacks.

# 1 **Introduction**

2 Plants are continuously exposed to pathogen attack and must rapidly recognize the presence  
3 of pathogens to initiate a timely, accurate and effective immune response. This immune  
4 response includes multiple lines of defence such as production of reactive oxygen species  
5 (ROS), plant cell wall reinforcement, synthesis of antimicrobial metabolites and pathogenesis-  
6 related (PR) proteins [1]. Many of these defence mechanisms are orchestrated by a complex  
7 interplay between signalling molecules of which salicylic acid (SA), jasmonate (JA) and  
8 ethylene (ET) are particularly important [2]. These responses are often accompanied by a  
9 massive transcriptional reprogramming that favours defence responses over routine cellular  
10 requirements. Thus, in *Arabidopsis*, up to 25% of all genes respond to various pathogen  
11 infections by altering their transcript levels [3, 4]. Using genome-wide technologies, it is now  
12 possible to address the molecular basis of the complex plant response to pathogen attack.

13 *Dickeya dadantii* (formerly *Erwinia chrysanthemi*), a broad host-range phytopathogenic  
14 enterobacterale, is a causal agent of soft rot disease on many crops and ornamentals and on  
15 the model plant *Arabidopsis thaliana* [5, 6]. *D. dadantii* virulence relies mainly on the  
16 production and secretion of plant cell wall degrading enzymes into the extracellular spaces of  
17 infected tissues [7 - 9]. These include pectinases and a cellulase secreted by a type II Out  
18 secretion system (T2SS) as well as proteases secreted by a type I Prt secretion system (T1SS)  
19 [10, 11]. Other plant factors influence efficient colonization, such as bacterial iron uptake  
20 systems, Hrp type III secretion system (T3SS), resistance to chemical and environmental  
21 stresses encountered within plant tissues, bacterial envelope constituents or motility [8, 9, 12,  
22 13, 14, 15, 16]. Often, after invading its host plant, *D. dadantii* resides latently in the plant  
23 intercellular spaces without provoking any symptoms, exhibiting a biotrophic lifestyle  
24 characterized by the repression of genes encoding virulence factors by several bacterial global

1 regulators [17, 18, 19]. As for hemibiotrophic and most bacterial pathogens [20], disease only  
2 occurs when bacteria shift to a necrotrophic behaviour under environmental conditions - such  
3 as high temperatures, high humidity - favourable for massive bacterial multiplication and  
4 production of virulence factors [15, 21].

5 Plant defence responses provoked by soft rot enterobacteriales have been mainly studied using  
6 *Pectobacterium carotovorum subsp. carotovorum* and *D. dadantii* on different host plants.  
7 Identified plant defence responses to *D. dadantii* infection are multiple, but nevertheless non  
8 decisive - no monogenic resistance to *D. dadantii* has been characterized - and perturbations  
9 of individual plant responses have a weak impact on symptom severity. These responses  
10 include competition for iron availability in *Arabidopsis* [6, 22, 23], activation of defence-  
11 related ELI genes in parsley [24] and triggering of early extracellular ROS production  
12 associated with plant cell wall reinforcement [25, 26, 27, 28]. Both ROS production and cell  
13 wall reinforcement increased in ABA deficient mutants during *D. dadantii* infection [26, 29].  
14 Modulation of plant cell death (PCD) also participates to the *D. dadantii/Arabidopsis*  
15 interaction, since exacerbated necrosis during infection limits disease progression [27].  
16 Similarly, a pathogen-triggered inhibition of PCD was also identified during the *P.*  
17 *carotovorum subsp. carotovorum/Arabidopsis* interaction [30]. In both *P. carotovorum subsp.*  
18 *carotovorum* and *D. dadantii* species, bacterial infection provoked the activation of plant  
19 defence marker genes associated to SA and JA/ET signalling pathways [25, 31, 32, 33, 34].  
20 The JA deficient *jar1* mutant was shown to be more susceptible to *D. dadantii* infection,  
21 whereas the SA deficient *sid2* mutant was as susceptible as the wild type [25], indicating that  
22 JA but not SA-dependent defence is partially efficient against *D. dadantii* invasion.  
23 Nevertheless, Antunez-Lamas et al. [34] reported that JA plays a "dual role", as it also  
24 promotes bacterial entry through wounded tissues.

25 These data show that the *D. dadantii/Arabidopsis* interaction is a complex process involving

1 multiple plant responses. Among these defence responses, some are partially efficient (such as  
2 ROS accumulation or the JA pathway), some are not (SA pathway), and conversely, some  
3 promote disease progression (such as inhibition of PCD, ABA pathway). As none of these  
4 plant responses is decisive in the disease issue, we hypothesised that other not already  
5 examined plant responses could occur during the interaction. In order to identify such new  
6 plant factors involved in this interaction, regardless the role - whether positive or negative - of  
7 these factors, we adopted a without *a priori* strategy based on the genome scale transcriptome  
8 analysis of *Arabidopsis* during the early stage of *D. dadantii* infection. This study showed  
9 increased expression levels of three sets of genes during the early stage of infection. These  
10 included genes involved in the biosynthesis of tryptophan, genes involved in the metabolism  
11 of indole glucosinolates (IGs) tryptophan-derived secondary metabolites and genes involved  
12 in the JA biosynthesis and signalling pathway. By using bacterial or plant mutants, we further  
13 analysed the relationship between JA and IG pathways, the nature of the bacterial triggering  
14 factors and the efficiency of these responses on disease progression.

15

## 16 **Material and methods**

### 17 **Biological material and growth conditions**

18 *D. dadantii* wild type and mutant strains used in this study are listed in Supplemental Table  
19 S1. The wild type strain 3937 (our collection) was isolated from *Saintpaulia ionantha*  
20 (African violet). Bacterial strains were grown at 30°C in Luria-Bertani medium. Liquid  
21 cultures were grown in a shaking incubator (180 rpm). For plant inoculations, the bacterial  
22 inoculum was prepared as follows: an aliquot of the -80°C glycerol stock culture was streaked  
23 on solidified LB medium (1.5% Difco agar) and grown for 48 h at 30°C. Then, a single  
24 colony was used to inoculate a liquid culture. After 8 h of growth at 30°C, 100 µl of the

1 culture was plated on LB agar medium and incubated overnight. The bacteria were then  
2 suspended in inoculation buffer (50 mM KPO<sub>4</sub>, pH 7) and inoculum density was adjusted to  
3 the value mentioned in each experiment.

4 *Arabidopsis thaliana* lines used in this study are listed in Supplemental Table S1. *Arabidopsis*  
5 seeds were sown in non-sterile soil, synchronized by incubation for two days at 4°C and  
6 allowed to germinate and grow for three weeks. They were then potted individually  
7 (pathogenicity assays) or in threes (RNA isolation) into separate pots and incubated for a  
8 further three weeks before inoculation. Plants were grown under short day condition (8h  
9 day/16h night) at 24°C/19°C.

## 10 **Plant inoculation**

11 Six-week-old plants were heavily watered and covered with a transparent lid 16 h before  
12 inoculation. The cover was kept in place throughout the assay to maintain high-moisture  
13 conditions.

14 For plant RNA isolation, plants were infected by rapid immersion in a bacterial suspension  
15 ( $5 \cdot 10^7$  cfu/mL) prepared in inoculation buffer containing 0.01% (vol/vol) Silwet L-77  
16 surfactant (van Meeuwen Chemicals BV, Weesp, The Netherlands). Aerial plant tissues were  
17 then collected either immediately after immersion (0 hpi) or 6, 12 and 24 hours post  
18 inoculation (hpi) and ground in liquid nitrogen to a fine powder.

19 For pathogenicity assays, plants were infected by wounding one leaf per plant with a needle  
20 and depositing a 5µl droplet of a  $10^4$  cfu mL<sup>-1</sup> bacterial suspension on the wound (50 bacteria  
21 per droplet). Wounding was necessary to obtain sufficient symptoms with respect to the low  
22 density inoculum used and to synchronize symptom outbreaks. This second method of plant  
23 inoculation was chosen to allow the scoring of individual symptom progression from 1 to 5  
24 days. Assays were carried out at least in duplicates. Statistical significance analysis of the



1 results was performed using Fisher's exact test, with a 0.05 two sided p-value threshold.

## 2 **RNA isolation for CATMA array hybridization and for** 3 **quantitative Real-Time PCR**

4 Total RNAs were purified by extraction in a guanidinium isothiocyanate extraction buffer and  
5 recovery by centrifugation on a caesium chloride cushion as described in [17].

## 6 **Transcriptome CATMA array hybridization**

7 Transcriptome profiling was carried out at the URGV - Plant Genomics Research (Evry,  
8 France) using Arabidopsis CATMA arrays containing 24,576 gene-specific tags (CATMAv2  
9 repertoire, [35, 36]). Arrays were printed and hybridized as described by Lurin *et al.* [37].  
10 Each experiment was carried out with two independent biological repeats to take into account  
11 biological variation. Each comparison included a technical repeat with fluorochrome reversal  
12 (dye swap). RNA integrity was verified using a Bioanalyzer (Agilent, [www.agilent.com](http://www.agilent.com)). For  
13 each sample, cRNAs were synthesized from 2  $\mu\text{g}$  of total RNA using the Message Amp  
14 aRNA kit (Ambion, [www.ambion.com](http://www.ambion.com)), and 5  $\mu\text{g}$  of cRNA was reverse transcribed using 300  
15 units of SuperScript II (Invitrogen) and Cy3-dUTP or Cy5-dUTP (NEN) for each slide.  
16 Labelled samples were combined, purified and concentrated using YM30 Microcon columns  
17 (Millipore). The hybridization of labelled samples to the slides and the scanning of the slides  
18 were performed as described by Lurin *et al.* [37].

## 19 **CATMA array data analysis**

20 Transcriptome statistical analysis was based on dye swaps (i.e. two arrays each containing  
21 24,576 GSTs and 384 controls). For each array, the raw data consisted of the log<sub>2</sub> median  
22 feature pixel intensity without background subtraction at 635 nm (red) and 532 nm (green).  
23 Data analysis was performed as described by Gagnot *et al.* [38]. In the following description,

1 log ratio refers to the differential expression between two conditions: either log<sub>2</sub> red/green or  
2 log<sub>2</sub> green/red according to the experimental design. Array-by-array normalization was  
3 performed to remove systematic biases: spots with poor features were excluded. To correct  
4 for dye bias, the signal was normalized globally according to intensity using the LOESS  
5 procedure. For each block, the log ratio median calculated over the values for the entire block  
6 was subtracted from each individual log ratio value to correct for print tip effects in each  
7 metablock. To determine differentially expressed genes, the log ratios were analysed using a  
8 paired t-test, assuming that the variance of the log ratios is the same for all genes. Spots with  
9 extreme variance (high or low) were excluded. The raw P values were adjusted by the  
10 Bonferroni method (type I error equal to 5%) to control for family-wise error rate and to  
11 drastically limit false-positives in a multiple comparison context [39].

## 12 **Quantitative real-time reverse transcription-polymerase chain** 13 **reaction (qRT-PCR)**

14 RNA samples were treated with RNase-free DNase I (Invitrogen) to remove any DNA  
15 contamination. First-strand cDNAs were then synthesized from 1-3 µg of total RNA using  
16 oligo(dT<sub>20</sub>) primer and M-MLV reverse transcriptase (Invitrogen), following the  
17 manufacturer's instructions. For quantitative Real-Time PCR analysis, cDNAs were amplified  
18 using Maxima<sup>®</sup> SYBR Green/ROX qPCR Master Mix (Fermentas) according to the  
19 manufacturer's license in an Applied Biosystems 7300 Real Time PCR System using the  
20 following conditions: 10 min at 95°C followed by 40 amplification cycles each consisting of  
21 15 s at 95°C and 60 s at 60°C. Results were analysed with the Applied Biosystems Sequence  
22 Detection Software v1.3.1.

23 All primers are listed in supplemental table S1. The  $\beta$ -6 *TUBULIN* (*TUB6*) gene was used as  
24 an internal control and behaved similarly all through the kinetics. This gene was thus used to

1 normalize the expression data for each gene of interest. The comparative quantitation method  
2 ( $\Delta\Delta\text{Ct}$ ) was used to contrast the different treatments [40]. Ct values quantify the number of  
3 PCR cycles necessary to amplify a template to a chosen threshold concentration,  $\Delta\text{Ct}$  values  
4 quantify the difference in Ct values between a test and a control gene for a given sample, and  
5  $\Delta\Delta\text{Ct}$  values are used for the comparison between two samples.  $\Delta\Delta\text{Ct}$  values were  
6 transformed to absolute values with  $2^{-\Delta\Delta\text{Ct}}$  for obtaining relative fold changes. Relative fold  
7 changes for each gene were normalised to 0 hpi control (set to one). All assays were run in  
8 duplicates (biological replication) to control for overall variability.

9

## 10 **Results**

### 11 ***D. dadantii* induces the expression of a limited set of genes during** 12 **the early phase of *Arabidopsis* infection**

13 To investigate *Arabidopsis* responses to *D. dadantii*, a genome-scale expression profiling was  
14 performed using CATMA arrays covering 24, 576 nuclear genes [35, 36]. We focused the  
15 study on genes regulated during the early phase of infection. For this purpose, plants were  
16 infected by immersion of aerial parts in a bacterial suspension and changes in gene expression  
17 were investigated 12 and 24 hours post-inoculation (hpi). Since with this method of  
18 inoculation no broad maceration symptoms were observed before 30 hpi, these time points  
19 should reflect early plant responses rather than indirect consequences of tissue maceration and  
20 plant cell death.

21 The microarray analysis revealed that a limited set of genes displayed significant differential  
22 expression (Bonferroni  $P$  value, threshold of 5%) during infection. 274 genes (i.e. around 1%  
23 of the total protein encoding genes), corresponding to 263 up-regulated and 11 down-

1 regulated genes, displayed significant differential expression 12 or 24 hpi as compared to the  
 2 mock-inoculated controls (Fig 1A, Supplemental Table S2). Of these genes, 61 were up and 1  
 3 was down-regulated at both 12 and 24 hpi.

4 We analysed the putative functions of these genes by using the Protein Sequence database of  
 5 the Munich Information Centre [41]. 64% of the differentially expressed genes are annotated  
 6 as encoding proteins of known or predicted functions, distributed among 3 main categories  
 7 (Table 1, Fig 1B). Not surprisingly, nearly one third of the modulated genes are associated  
 8 with the “interaction with the environment, cell rescue and defence” category. Another third  
 9 corresponds to the “metabolism-related” category, with an over-representation of amino acid  
 10 and secondary metabolisms. The third main category (15%) is related to the “cellular  
 11 transport” category (electron transport, drug/toxin transport). Down-regulated genes do not  
 12 clustered in any special functional category.

13 **Table 1. Functional classification of *Arabidopsis* genes regulated in response to *D.***  
 14 ***dadantii* infection.** The sum of percentages exceeds 100% as a single same gene may belong  
 15 to several functional categories.

16

<b>Functional category</b>	<b>number of genes</b>	<b>% of total genes</b>
<b>Metabolism</b>	<b>99</b>	<b>36 %</b>
amino acid metabolism	19	7 %
C-compound and carbohydrate metabolism	31	11 %
secondary metabolism	20	7 %
<b>Cellular transport, transport facilities and transport routes</b>	<b>42</b>	<b>15 %</b>
<b>Interaction with the environment, cell rescue, defence and virulence</b>	<b>79</b>	<b>29 %</b>
cellular sensing and response to external stimulus	54	20 %
stress response	38	14 %
other plant signalling molecules response (jasmonic acid,	18	7 %

salicylic acid etc.)		
response to wounding	17	6 %
disease, virulence and defence	15	5 %
detoxification	11	4 %
ethylene response	5	2 %
<b>Unclassified</b>	<b>99</b>	<b>36%</b>

1

2

3 **Induction of tryptophan-related, indole glucosinolate-related and**  
4 **jasmonate-related genes composes an early response to *D. dadantii***  
5 **infection**

6 Among the 62 genes reproducibly up-regulated both 12 and 24 hpi, more than one half (34 of  
7 62 genes) are classified as metabolism-related, with an over-representation of indole  
8 glucosinolate (IG) metabolism genes (8 genes) and of jasmonate (JA, 3 genes) and tryptophan  
9 (Trp, 3 genes) metabolism genes. Other metabolism-related genes are scattered across various  
10 metabolic processes (amino acids metabolism, cell wall modification, lipids metabolism). Of  
11 the entire set of 274 genes modulated either at 12 or 24 hpi, IG, JA and Trp-related genes  
12 (metabolism and signalling) represent more than 10% of the modulated genes, with  
13 respectively 13, 10 and 7 genes (Table 2), that cover the entire IG metabolic pathway, from  
14 the synthesis of the key precursor Trp to almost every biosynthesis and degradation steps (Fig  
15 2). Notably, *D. dadantii* infection also modulates the expression of the gene encoding the  
16 MYB51 transcription factor involved in IG metabolic regulation [42]. Up-regulated JA  
17 biosynthesis genes are involved in the early steps of JA biosynthesis, with three *LOX* genes  
18 (conversion of  $\alpha$ -linolenate) and three genes involved in oxo-phytodienoate (OPDA)  
19 conversion to OPC8-enoyl-CoA (Table 2). In addition to these biosynthesis genes, four of the

1 modulated genes are involved in JA signalling including two *JAZ* repressors and the *ERF2*  
 2 transcription factor involved in the perception of JA [43].

3 **Table 2. Tryptophan- (Trp), indole glucosinolate- (IG) and jasmonate- (JA) related**  
 4 **genes whose expression levels are modulated in response to *D. dadantii* infection.** Values  
 5 are log<sub>2</sub> microarray signal ratios between infected and buffer-treated control plants. Positive  
 6 values correspond to genes up-regulated in response to *D. dadantii* (log<sub>2</sub> ratio > 0.5,  
 7 Bonferroni *P* value < 0.05). ns indicates that gene expression was not significantly changed.  
 8 hpi : hours post-inoculation.

AGI number		12 hpi	24 hpi
<b>IG biosynthesis</b>			
AT1G69930	glutathione transferase ( <i>GSTU11</i> )	0.83	1.08
AT1G74100	sulfotransferase ( <i>SOT16</i> )	0.63	0.87
AT4G23100	glutamylcysteine synthetase ( <i>PAD2</i> )	ns	0.82
AT4G31500	cytochrome P450 ( <i>CYP83B1</i> )	0.75	0.75
AT4G37410	cytochrome P450 ( <i>CYP81F4</i> )	0.86	0.66
AT4G39940	transferase ( <i>AKN2</i> )	0.92	ns
AT4G39950	cytochrome P450 ( <i>CYP79B2</i> )	1.58	1.31
<b>IG catabolism</b>			
AT1G52000	jacalin lectin family protein	ns	0.60
AT1G52030	myrosinase-binding protein ( <i>MBP2</i> )	0.61	ns
AT1G59870	ABC transporter family protein ( <i>PEN3</i> )	0.58	1.47
AT2G39330	jacalin lectin family protein ( <i>JAL23</i> )	1.09	0.98
AT3G16400	myrosinase-binding protein ( <i>NSP1</i> )	0.65	0.75
<b>IG regulation</b>			
AT1G18570	transcription factor ( <i>MYB51</i> )	0.58	ns
<b>Trp biosynthesis</b>			
AT2G04400	indole-3-glycerol phosphate synthase ( <i>IGPS</i> )	ns	0.79
AT2G24850	tyrosine aminotransferase ( <i>TAT3</i> )	1.52	1.54
AT3G54640	tryptophan synthase ( <i>TSA1</i> )	1.11	1.42
AT3G55870	anthranilate synthase	0.66	ns
AT4G39980	DAHPh synthetase ( <i>DHS1</i> )	1.02	1.01
AT5G05730	anthranilate synthase ( <i>ASA1</i> )	ns	1.15
AT5G17990	anthranilate phosphoribosyltransferase ( <i>TRP1</i> )	ns	0.64

### JA biosynthesis

AT1G17420	lipoxygenase ( <i>LOX3</i> )	0.82	0.70
AT1G20510	4-coumarate-CoA ligase ( <i>OPCL1</i> )	ns	0.97
AT1G72520	lipoxygenase ( <i>LOX4</i> )	1.09	1.12
AT2G06050	12-oxophytodienoate reductase ( <i>OPR3</i> )	0.59	0.64
AT3G45140	lipoxygenase ( <i>LOX2</i> )	0.77	1.15
AT4G16760	acyl-CoA oxidase( <i>ACX1</i> )	ns	0.63

### JA signalling

AT1G19180	JAZ repressor family ( <i>JAZ1</i> )	0.98	0.89
AT1G28480	glutaredoxin ( <i>GRX480</i> )	ns	0.81
AT5G13220	JAZ repressor family ( <i>JASZ10</i> )	1.28	1.10
AT5G47220	transcription factor ( <i>ERF2</i> )	ns	1.03

1

2

3 The transcriptomic results were confirmed by qRT-PCR for a subset of Trp, IG and JA-  
4 related genes (Fig 3). All gene transcripts progressively accumulated from 12 hpi onwards,  
5 with a relative fold change ranging from 1.9 to more than 80 24 hpi. In contrast to the  
6 response to the infection by *D. dadantii*, buffer inoculation did not provoke any significant  
7 and continued increase of transcripts accumulation. The distribution of experimental values  
8 shows that, if a variability of relative fold changes among biological repeats existed, the  
9 induction profiles were always similar. This variability was encountered in all the quantitative  
10 gene expression analyses we performed.

### 11 **JA mutants have contrasting effects on the IG biosynthetic** 12 **pathway**

13 Coordinated accumulation of both JA and IG-related gene transcripts during infection  
14 prompted us to analyse whether JA plays a role in the control of IG metabolism. This was  
15 investigated by analysing the expression of IG biosynthesis genes in JA mutants. The  
16 expression of two IG biosynthesis genes - *CYP79B2* (top of the biosynthetic pathway) and

1 *SOT16* (final step of the biosynthetic pathway) - was analysed in the JA insensitive *coil*  
2 mutant [44] and in the JA biosynthesis mutants *jar1* mutant that is impaired in the  
3 biosynthesis of the biologically active JA-Ile conjugate [45, 46].

4 Activation of the two IG biosynthesis genes was not significantly different in the JA  
5 biosynthesis mutants *jar1* compared to the *col-0* wild type plant 24 hpi (Fig 4). By contrast, in  
6 the JA insensitive *coil* mutant no significant induction of the *SOT16* gene was observed 24  
7 hpi, while the induction of the *CYP79B2* gene was not altered (Fig 4). These results reveal the  
8 diversity of the interplay of the JA pathway on IG-related gene regulations: the first step of  
9 the biosynthetic pathway seems to be independent of JA biosynthesis and signalling, while the  
10 final step of the biosynthetic pathway catalysed by the *SOT16* sulfotransferase are regulated  
11 by the JA pathway. Interestingly, this regulation involves the JA-Ile receptor *coil*, rather than  
12 JA biosynthesis itself.

### 13 **Type I (PrtE) and type II (OutC) bacterial protein secretion** 14 **systems are necessary to induce JA and IG-related gene** 15 **expression during *D. dadantii* infection**

16 Bacterial secretion systems are known to be critical in many plant/bacteria interactions. To  
17 test the involvement of these systems on plant transcript accumulation after *D. dadantii*  
18 infection, we analysed the requirement for individual bacterial secretion systems in the  
19 induction of IG- and JA-related genes. For this analysis, we extended the infection kinetics up  
20 to 30 hpi when the variability of inductions was reduced compared to the earlier time points.  
21 This allows us to outline an accurate picture of gene induction according to bacterial  
22 genotypes.

23 We quantified by qRT-PCR transcript accumulation levels of two IG-related genes (Fig 5A



1 and B) and two JA-related genes (Figs 5C and D) after buffer inoculation, inoculation with  
2 the wild type *D. dadantii* strain (3937) and with mutants altered in the three protein secretion  
3 systems known to be involved in virulence (*prtE*, type I mutant, *outC*, type II mutant and  
4 *hrcC*, type III mutant).

5 Figure 5A and B clearly show that IG-related gene transcript accumulation observed 30 hpi  
6 with the wild type bacterial strain was considerably lower after infection with the mutant  
7 strain with an altered protein secretion system I (T1SS *prtE*) and was similar to the buffer-  
8 inoculated control with the mutant strain with an altered protein secretion system II (T2SS  
9 *outC*). Thus, T1SS and T2SS play a role in the induction of the IG biosynthesis pathway.  
10 Conversely, inactivation of the secretion system III (T3SS *hrp* secretion system) leads to an  
11 approximately two-fold IG-related transcript accumulation increase as compared to the wild  
12 type strain.

13 Analysis of the involvement of bacterial secretion systems in the induction of biosynthesis JA  
14 genes (Figs 5C and D) leads exactly to the same conclusion: T1SS and T2SS are required to  
15 fully induce the expression of *LOX2* and *OPR3* biosynthesis genes and inactivation of T3SS  
16 slightly increases the expression levels.

17 The T2SS is the major secretion system both in terms of pathogenicity impact and number of  
18 secreted factors, as it is responsible, among others, for the secretion of 10 pectate lyases and 1  
19 cellulase [47]. To clarify the dependence of IG- and JA-related gene expression on T2SS  
20 secreted factors, we analysed the expression of 2 IG- and 2 JA-related genes after Arabidopsis  
21 inoculation with the  $\Delta pel$  mutant that is impaired in the secretion of the five major pectate  
22 lyases (PelABCDE). Figure 6 demonstrates unequivocally that these major pectate lyases are  
23 necessary for the observed inductions.

## 24 **Involvement of JA and IG pathways in disease progression**

1 In order to analyse the importance of the IG response in disease progression, we performed a  
2 kinetics analysis of symptom progression in both JA and IG-deficient *Arabidopsis* mutants as  
3 compared to the wild type parent.

4 The JA biosynthesis *jar1 Arabidopsis* mutant has already been briefly described as more  
5 susceptible to *D. dadantii* infection [25]. We extended this study by analysing the phenotype  
6 of two JA mutants: the JA insensitive *coi1* mutant and the biosynthetic *jar1* mutant. Plants  
7 were infected with *D. dadantii* wild-type strain, and disease progression was scored during  
8 five days using a severity symptoms scale from 0 to 3 (see legend of Fig 7) as previously  
9 described by Lebeau *et al.* [17]. In all JA mutants, we observed a significantly increased  
10 number of plants with severe symptoms (scored 3) as compared to wild-type infected plants  
11 three, four and five days post-inoculation (Fig 7A). Moreover, symptoms appear earlier (2 and  
12 3 dpi) in the *coi1* and *jar1* mutants. This confirms that the JA pathway is involved in partial  
13 resistance of *Arabidopsis* to *D. dadantii*.

14 As IG-related genes were shown to be up-regulated during infection, we also investigated the  
15 involvement of the IG pathway in *Arabidopsis* susceptibility. Response to *D. dadantii*  
16 infection was followed in the *sot16* simple mutant and the *cyp79B2cyp79B3* double mutant,  
17 both impaired in IG biosynthesis [48, 49]. The MYB transcription factor *atr1* mutant that  
18 shows reduced IG levels [50] was also included in this study. Even if the number of plants  
19 with severe symptoms (scored 3) appeared to be reduced in IG mutants compared to the wild  
20 type, no statistically significant difference in the number of plants with these severe  
21 symptoms was observed (Fig 7B). Similarly, symptoms appearance was not statistically  
22 different, except for the *cyp79B2cyp79B3* mutant 2 dpi. Levels of intermediate symptom  
23 degree (scored 2) that are higher in the mutants compared to the wild type reflect the non-  
24 significant decreases in both symptom appearance and severity (scores 0 and 3). This led us to  
25 conclude that, even if the IG pathway is clearly activated in response to *D. dadantii* infection,

1 this defence line has no significant impact on disease progression.

2

### 3 **Discussion**

4 To study the early plant response to *D. dadantii* infection, we performed an *Arabidopsis*  
5 whole-genome transcriptome analysis during the early phase of infection. We used an  
6 infection procedure - a rapid immersion in bacterial suspension avoiding plant wounding -  
7 much closer to a natural process than an infiltration with a high-density bacterial suspension.  
8 This strategy was chosen to prevent a massive transcriptome reprogramming due to rapidly  
9 spreading maceration, with considerable cell death and dramatic perturbation of plant  
10 homeostasis. As expected, the expression of only a limited number of genes was modulated  
11 during the early stages of infection and several of them were strongly associated with plant  
12 defence and interaction with the environment. To our knowledge, this study is the first  
13 *Arabidopsis* transcriptome analysis at a whole-genome level in response to soft rot  
14 enterobacterales infection. It substantially diverges from other transcriptome studies involving  
15 for example the T3SS-dependent bacterial *P. syringae* or the necrotrophic fungus *B. cinerea*,  
16 for which one or two thousands of genes are modulated [51, 52]. It enabled us to show a  
17 coordinated transcriptional induction of genes involved in the metabolism of tryptophan and  
18 the related indole glucosinolate secondary metabolites (Fig 2). Moreover, our study also  
19 revealed the modulation of JA-related genes expression.

20 The coordinated activation of IG and JA pathways after *D. dadantii* infection evokes a role of  
21 jasmonates in *D. dadantii*-provoked IG response. Indeed, previous studies reported that IG  
22 production and IG-related genes expression were mediated, at least partially, by jasmonates,  
23 even if the experimental contexts (bacterial elicitors or MeJA treatments, chewing insects  
24 attack) were different from ours [53 - 59]. Our results however depict a more subtle situation.

1 First, induction of the *CYP79B2* gene encoding (with *CYP79B3*) the bottleneck enzyme of  
2 tryptophan-derived secondary metabolism [60] was shown to be independent of the JA  
3 pathway while the induction of the downstream *SOT16* biosynthesis gene was dependent on  
4 the JA receptor COI1 (Fig 4). The occurrence of differential regulations along a biosynthetic  
5 pathway is not unusual and could be related to the involvement of this pathway in a wide  
6 metabolic network. Indeed, indole acetaldoxime - the product of *CYP79B2* activity - serves as  
7 a branching point for indole glucosinolates, IAA and camalexin biosynthesis (for review see  
8 [61]). From that perspective, it can be easily conceived that a regulation of genes involved in  
9 a final synthesis step would be more efficient to control total IG contents without disturbing  
10 others pathways. Second, *SOT16* gene induction was shown to be dependent on the JA  
11 receptor COI1, but not on the key JA biosynthesis jasmonate-amido synthetase enzyme,  
12 encoded by the *JAR1* gene. Such contrasted effects of mutations inactivating *COI1* and JA  
13 biosynthesis genes have often been described in other systems. For example, the *jar1* mutant  
14 was shown to have little or no effect on wound induction of JA-regulated genes such as  
15 *PDF1.2*, although JA-Ile is known to be a key signal for COI1 activity [62]. Furthermore,  
16 stress-related response genes that specifically respond to the JA-precursor oxo-phytodienoate  
17 OPDA but not to JA have been identified [63, 64]. More recently, phytoprostane oxylipins -  
18 prostaglandin/jasmonate-like products of nonenzymatic lipid peroxidation - were shown to  
19 regulate specific plant responses in a COI1-dependent manner but independently of jasmonate  
20 biosynthesis [65]. This multiplicity of bioactive JA compounds and their different modes of  
21 action could allow plants to respond specifically and flexibly to pathogen attack [66].

22 Brader *et al.* [54] reported the activation of Trp and IG biosynthetic pathways in *Arabidopsis*  
23 by culture filtrates of *Pectobacterium*. This prompted us to analyse JA and IG-related gene  
24 activation after infection with *D. dadantii* mutants impaired in the major protein secretion  
25 systems involved in virulence to find out if a secreted virulence factor could trigger this gene

1 induction. We showed that the T1SS (PrtE) and T2SS (OutC) were individually necessary to  
2 fully induce both pathways (Fig 5). Notably, induction impairment was more severe after  
3 infection by the *outC* mutant than by the *prtE* mutant for both pathways. Of the hundred  
4 proteins secreted by *D. dadantii*, pectinases are the predominant virulence factors secreted by  
5 the T2SS, as revealed by the phenotype of the *outC* mutant that is totally unable to provoke  
6 maceration symptoms [9]. We therefore extended our analysis to the  $\Delta pel$  mutant that is  
7 impaired in the synthesis of the five major pectate lyases PelABCDE. This analysis showed  
8 that this limited set of five pectate lyases was required to trigger the observed inductions of  
9 both JA and IG pathways (Fig 6).

10 These inductions might be caused either by a direct effect of proteins or by the enzymatic  
11 release of signalling oligogalacturonides. It indicates furthermore that *D. dadantii* does not  
12 exhibit MAMPs that can induce these pathways. Such MAMP-independent induction has  
13 already been reported for example in the *Erwinia amylovora/Malus spp.* pathosystem [67].  
14 Interestingly, this MAMP-independent induction contrasts with the induction of all known IG  
15 biosynthetic genes via the MYB51 transcription factor in *Arabidopsis* triggered by the *P.*  
16 *syringae*-derived Flg22 flagellin peptide fragment [68]. To that respect, it should be noted that  
17 the *D. dadantii* flagellin FliC shares only 63.3% identity in a 14 aa overlap with the Flg22  
18 peptide and amino acid substitutions concern some amino acids which are known to be  
19 important for elicitor activity [69]. This could explain the lack of induction of the IG pathway  
20 by *D. dadantii* flagellin. We can envision that the lack of some plant responses to *D. dadantii*  
21 MAMPs would represent an adaptive advantage for the pathogen during the early  
22 asymptomatic stage, the subsequent activation of plant responses during the following  
23 symptomatic stage possibly occurring too late to be efficient.

24 Compared to the much weaker induction observed with T1SS and T2SS mutants, induction of  
25 both JA- and IG-related genes after infection by the T3SS *hrcC* mutant was about 2 times

1 higher than after infection by the wild type 30 hpi (Fig 5). It is well documented that T3SS of  
2 plant pathogenic bacteria injects effector proteins that suppress basal defence (for review, see  
3 [70]) and, in different pathosystems, T3SS-defective bacteria were found to highly activate  
4 basal defences (for review, see [71, 72]). Furthermore, a strong T3SS-dependent down-  
5 regulation of the JA pathway was observed in leaves of the susceptible *Malus spp.* genotype  
6 following *E. amylovora* infection [67]. Although T3SS only plays a marginal role in *D.*  
7 *dadantii* virulence - this system being important only at low inoculum or on semi-tolerant  
8 plants [12, 16] - the stronger induction of JA and IGs-related genes observed with the *hrcC*  
9 mutant could reveal an involvement of type III effectors in the down-regulation of JA-related  
10 basal defences.

11 IGs participate, with aromatic and aliphatic glucosinolates, in the capparales-specific plant  
12 defence glucosinolate-myrosinase system (for review, see [73]) that is often referred as the  
13 mustard oil bomb. This system, effective against most herbivorous insects and against  
14 necrotrophic fungi, is based on the compartmentalization of glucosinolates and matching  
15 hydrolases, called myrosinases. Glucosinolates form a major group of secondary metabolites,  
16 based on a core structure of a  $\beta$ -D-thioglucose group linked to a sulfonated aldoxime moiety.  
17 When plant tissue is damaged, glucosinolates come into contact with plant myrosinases.  
18 Myrosinases remove the  $\beta$ -glucose moiety from glucosinolates, leading to the formation of an  
19 unstable intermediate, and, finally, to a variety of toxic breakdown products (Fig 2) involved  
20 in resistance to pathogens including microorganisms, nematodes and insects (for review, see  
21 [74]). More recently, the role of IG breakdown products was extended to plant defence  
22 signalling [68].

23 The specific induction of IGs biosynthesis and degradation genes taking place after  
24 inoculation of *Arabidopsis* by *D. dadantii* evokes a role of IGs in the *Arabidopsis* defence  
25 response. While glucosinolates have been shown to play a clear role in defence against

1 herbivory and fungal pathogens [73, 75], such evidence is poorly documented concerning the  
2 role of IGs in plant-bacteria interactions. The only reports on an antibacterial effect of IGs -  
3 including on *D. dadantii* - are *in vitro* studies using IGs breakdown products [54, 76, 77].  
4 However, these studies minimize the complexity of the glucosinolate response, as illustrated  
5 by the diversity of glucosinolate species (more than 40 molecules, of which 4 known IGs) and  
6 of nitrile specifier enzymes that generate various nitrile species in conjunction with  
7 myrosinases. In addition, *in vitro* studies do not take into account well known bacterial  
8 adaptations to various plant generated stresses encountered during infection, such as acidic  
9 and oxidative stresses. Thus, we could potentially imagine a bacterial adaptive response to  
10 toxic IG-breakdown products.

11 The phenotypic analysis of three *Arabidopsis* mutants impaired in IGs biosynthesis (*atr1*,  
12 *cyp79B2cyp79B3* and *sot16*) did not reveal any significant difference in symptom severity  
13 after *D. dadantii* inoculation as compared to the wild type (Fig 7B). This indicates that IGs do  
14 not play *in planta* a major role in plant defence against *D. dadantii*. In contrast, the  
15 involvement of the JA pathway in limiting symptom progression during infection previously  
16 reported by Fagard *et al.* [25] was clearly confirmed by the phenotypes of the three JA  
17 mutants we analysed (Fig 7A). While IG defence response has been demonstrated to be  
18 effective during chewing insects attack or necrotrophic fungi infection, previous studies on  
19 model phytopathogenic bacteria (*P. syringae*, *E. carotovora*, *Pectobacterium*...) do not report  
20 any clear evidence of an effect of IG production on disease progression. Our results illustrate  
21 what may be a general trait of bacterial infections: a clear and unambiguous induction of the  
22 IG pathway, balanced by the lack of effectiveness of this defence response against bacterial  
23 pathogens. Such an inefficient massive defence response to *D. dadantii* was already observed  
24 by Fagard *et al.* [25], who described the induction of the SA pathway and an absence of  
25 sensitivity phenotype of the corresponding mutants.

1 In conclusion, our transcriptomic analysis of *Arabidopsis* responses to *D. dadantii* infection  
2 revealed the activation of two pathways related to plant defence, the IG and JA pathways. The  
3 activation of some of IG biosynthesis genes requires a functional COI1, but is independent of  
4 jasmonate and its derivative conjugate JA-Ile synthesis. Mutant analysis revealed however  
5 that, while JA signalling is clearly involved in defence against this pathogen, IGs production  
6 does not appear to hinder *D. dadantii* virulence. The impaired activation of these pathways by  
7 T1SS and T2SS bacterial mutants highlights that *D. dadantii* MAMPs recognition has no  
8 effect on this induction. This could explain the weakness of *Arabidopsis* response to *D.*  
9 *dadantii* infection, in term of number of modulated genes, as compared to infection by other  
10 bacteria, necrotrophic fungi or chewing insects. This camouflage strategy during the early  
11 stage of infection could be one element explaining the adaptive success of this bacterial  
12 pathogen, as exemplified by the host broadness and the lack of specific and highly efficient  
13 defence.

14

## 15 **Acknowledgments**

16 Transcriptome profiling using CATMA arrays was supported by a grant from the French  
17 National Institute for Agricultural Research (INRA).

18 We thank Jean-Pierre Renou for CATMA array experiment design and data analysis, Caroline  
19 Kunz and Marie-Anne Barny for critical reading of the manuscript and Emma Rochelle-  
20 Newall for English corrections. We thank J. Bender for *cyp79B2cyp79B3* and *atr1* mutants,  
21 M. Fagard for *coil* mutants.

## 22 **Data deposition**

23 Microarray data were deposited at Gene Expression Omnibus database (accession number



1 GSE11793) and at CATdb (project RA06-04\_BOS1) according to the "Minimum Information  
2 About a Microarray Experiment" standards.

### 3 **Supporting information**

4 **Table S1. Bacterial strains, plant lines and primers used in this study.** Primer efficiency  
5 (E) for qPCR was calculated from standard curve slope according to  $E = (10^{(-1/\text{slope})} - 1) \times$   
6 100. Primers were selected in a range of  $100 \pm 5$  % efficiency.

7 **Table S2. List of total *Arabidopsis* genes modulated during *D. dadantii* infection 12 or 24**  
8 **hpi.** Fold change ratios (infected plants vs buffer control) are expressed in log2 scale. When  
9 p-value were higher than 0.05, fold change ratios were shaded in light grey. Red scale bar: up-  
10 regulated genes; green scale bar: down-regulated genes. The threshold for modulated genes  
11 was fixed to  $\pm 0.5$  (log2 scale).

12

## 1 **References**

- 2 1. Somssich IE, Halbrock K. Pathogen defense in plants - a paradigm of biological  
3 complexity. *Trends in Plant Science*. 1998;3: 86-90.
- 4 2. Pieterse CMJ, Leon-Reyes A, Van der Ent S, Van Wees SCM. Networking by small-  
5 molecule hormones in plant immunity. *Nature Chemical Biology*. 2009;5: 308-316.
- 6 3. Maleck K, Levine A, Eulgem T, Morgan A, Schmid J, Lawton KA, Dangl JL, Dietrich RA.  
7 The transcriptome of *Arabidopsis thaliana* during systemic acquired resistance. *Nature*  
8 *Genetics*. 2000;26: 403-410.
- 9 4. Tao Y, Xie Z, Chen W, Glazebrook J, Chang HS, Han B, Zhu T, Zou G, Katagiri F.  
10 Quantitative nature of *Arabidopsis* responses during compatible and incompatible interactions  
11 with the bacterial pathogen *Pseudomonas syringae*. *Plant Cell*. 2003;15: 317-330.
- 12 5. Perombelon MCM, Kelman, A Ecology of the soft rot erwinias. *Annual Review of*  
13 *Phytopathology*. 1980;18: 361-387.
- 14 6. Dellagi A, Rigault M, Segond D, Roux C, Kraepiel Y, Cellier F, Briat JF, Gaymard F,  
15 Expert D. Siderophore-mediated upregulation of *Arabidopsis* ferritin expression in response  
16 to *Erwinia chrysanthemi* infection. *Plant Journal*. 2005;43: 262-272.
- 17 7. Collmer A, Keen N. The role of pectic enzymes in plant pathogenesis. *Annual Review of*  
18 *Phytopathology*. 1986;24: 383-409.
- 19 8. Barras F, Van Gijsegem F, Chatterjee AK. Extracellular enzymes and pathogenesis of soft-  
20 rot *Erwinia*. *Annual Review of Phytopathology*. 1994;32: 201-234.
- 21 9. Charkowski A, Blanco C, Condemine G, Expert D, Franza T, Hayes C, Hugouvieux-Cotte-  
22 Pattat N, Solanilla EL, Low D, Moleleki L *et al*. The Role of Secretion Systems and Small  
23 Molecules in Soft-Rot Enterobacteriaceae Pathogenicity. *Annual Review of Phytopathology*.

- 1 2012;50: 425-449.
- 2 10. Letoffe S, Delepelaire P, Wandersman C. Protease secretion by *Erwinia chrysanthemi*: the  
3 specific secretion functions are analogous to those of *Escherichia coli* alpha-haemolysin. The  
4 Embo Journal. 1990;9: 1375-1382.
- 5 11. Kazemi-Pour N, Condemine G, Hugouvieux-Cotte-Pattat N. The secretome of the plant  
6 pathogenic bacterium *Erwinia chrysanthemi*. Proteomics. 2004;4: 3177-3186.
- 7 12. Bauer DW, Bogdanove AJ, Beer SV, Collmer A. *Erwinia chrysanthemi* hrp genes and  
8 their involvement in soft rot pathogenesis and elicitation of the hypersensitive response.  
9 Molecular Plant-Microbe Interactions. 1994;7: 573-581.
- 10 13. Bauer DW, Wei ZM, Beer SV, Collmer A. *Erwinia chrysanthemi* harpin Ech: an elicitor  
11 of the hypersensitive response that contributes to soft-rot pathogenesis. Molecular Plant-  
12 Microbe Interactions. 1995;8: 484-491.
- 13 14. Hugouvieux-Cotte-Pattat N, Condemine G, Nasser W and Reverchon S. Regulation of  
14 pectinolysis in *Erwinia chrysanthemi*. Annual Review of Microbiology. 1996;50: 213-257.
- 15 15. Perombelon MCM. Potato diseases caused by soft rot erwinias: an overview of  
16 pathogenesis. Plant Pathology. 2002;51: 1-12.
- 17 16. Yang CH, Gavilanes-Ruiz M, Okinaka Y, Vedel R, Berthuy I, Boccara M, Chen JW,  
18 Perna NT, Keen NT. hrp genes of *Erwinia chrysanthemi* 3937 are important virulence factors.  
19 Molecular Plant-Microbe Interactions. 2002;15: 472-480.
- 20 17. Lebeau A, Reverchon S, Gaubert S, Kraepiel Y, Simond-Côte E, Nasser W, Van  
21 Gijsegem F. The GacA global regulator is required for the appropriate expression of *Erwinia*  
22 *chrysanthemi* 3937 pathogenicity genes during plant infection. Environmental Microbiology.  
23 2008;10: 545-559.

- 1 18. Reverchon, S, Van Gijsegem, F, Effantin, G, Zghidi-Abouzid, O and Nasser W.  
2 Systematic targeted mutagenesis of the MarR/SlyA family members of *Dickeya dadantii* 3937  
3 reveals a role for MfbR in the modulation of virulence gene expression in response to acidic  
4 pH. Mol Microbiol. 2010;78, 1018-1037.
- 5 19. Pedron J, Chapelle E, Alunni B, and Van Gijsegem F. Transcriptome analysis of the  
6 *Dickeya dadantii* PecS regulon during the early stages of interaction with *Arabidopsis*  
7 *thaliana*. Molecular Plant Pathol. 2018;19: 647-663.
- 8 20. Kraepiel Y, Barny MA. Gram-negative phytopathogenic bacteria, all hemibiotrophs after  
9 all? Molecular Plant Pathol. 2016;17: 313-316.
- 10 21. Perombelon MCM, Lowe R. Studies on the initiation of bacterial soft rot in potato tubers.  
11 Potato Research. 1975;18: 64-82.
- 12 22. Expert D. Withholding and exchanging iron: interactions between *Erwinia spp.* and their  
13 plant hosts. Annual Review of Phytopathology. 1999;37: 307-334.
- 14 23. Segond D, Dellagi A, Lanquar V, Rigault M, Patrit O, Thomine S, Expert D. NRAMP  
15 genes function in *Arabidopsis thaliana* resistance to *Erwinia chrysanthemi* infection. The  
16 Plant Journal. 2009;58: 195-207.
- 17 24. Van Gijsegem F, Somssich IE, Scheel D. Activation of defense-related genes in parsley  
18 leaves by infection with *Erwinia chrysanthemi*. European Journal of Plant Pathology.  
19 1995;101: 549-559.
- 20 25. Fagard M, Dellagi A, Roux C, Périno C, Rigault M, Boucher V, Shevchik VE, Expert D.  
21 *Arabidopsis thaliana* expresses multiple lines of defense to counterattack *Erwinia*  
22 *chrysanthemi*. Molecular Plant-Microbe Interactions. 2007;20: 794-805.

- 1 26. Asselbergh B, Achuo AE, Höfte M, Van Gijsegem F. Abscisic acid deficiency leads to  
2 rapid activation of tomato defence responses upon infection with *Erwinia chrysanthemi*.  
3 *Molecular Plant Pathology*. 2008;9: 11-24.
- 4 27. Kraepiel Y, Pédrón J, Patrit O, Simond-Côte E, Hermand V, Van Gijsegem F. Analysis of  
5 the plant *bos1* mutant highlights necrosis as an efficient defence mechanism during *D.*  
6 *dadantii/Arabidopsis thaliana* interaction. *PLoS One*. 2011;6:e18991.
- 7 28. Wolf S, Hématy K, Höfte H. Growth Control and Cell Wall Signaling in Plants. *Annual*  
8 *Review of Plant Biology*. 2012;63: 381-407.
- 9 29. Van Gijsegem F, Pédrón J, Patrit O, Simond-Côte E, Maia-Grondard A, Pétriacq P,  
10 Gonzalez R, Blottière L, Kraepiel Y. Manipulation of ABA content in *Arabidopsis thaliana*  
11 modifies sensitivity and oxidative stress response to *Dickeya dadantii* and influences  
12 peroxidase activity. *Frontiers in Plant Science*. 2017;8 : 456.
- 13 30. Li J, Brader G, Palva ET.1 Kunitz trypsin inhibitor: an antagonist of cell death triggered  
14 by phytopathogens and fumonisin b1 in Arabidopsis. *Molecular Plant*. 2008;1: 482-495.
- 15 31. Palva TK, Hurtig M, Saindrenan P, Palva ET. Salicylic acid induced resistance to *Erwinia*  
16 *carotovora* subsp. *Carotovora* in tobacco. *Molecular Plant-Microbe Interactions*. 1994;7: 356-  
17 363.
- 18 32. Kariola T, Palomäki TA, Brader G, Palva ET. *Erwinia carotovora* subsp. *carotovora* and  
19 *Erwinia*-derived elicitors HrpN and PehA trigger distinct but interacting defense responses  
20 and cell death in Arabidopsis. *Molecular Plant-Microbe Interactions*. 2003;16: 179-187.
- 21 33. Li J, Brader G, Palva ET. The WRKY70 transcription factor: a node of convergence for  
22 jasmonate-mediated and salicylate-mediated signals in plant defense. *Plant Cell*. 2004;16:  
23 319-331.
- 24 34. Antunez-Lamas M, Cabrera E, Lopez-Solanilla E, Solano R, González-Melendi P, Chico

- 1 JM, Toth I, Birch P, Pritchard L, Liu H, Rodriguez-Palenzuela P. Bacterial chemoattraction  
2 towards jasmonate plays a role in the entry of *Dickeya dadantii* through wounded tissues.  
3 *Molecular Microbiology*. 2009;74: 662-671
- 4 35. Crowe M, Serizet C, Thareau V. CATMA: a complete *sArabidopsis* GST database.  
5 *Nucleic Acids Research*. 2003;31: 156-158.
- 6 36. Hilson P, Allemeersch J, Altmann T, Aubourg S, Avon A, Beynon J, Bhalerao RP, Bitton  
7 F, Caboche M, Cannoot B *et al.* Versatile gene-specific sequence tags for *Arabidopsis*  
8 functional genomics: transcript profiling and reverse genetics applications. *Genome Research*.  
9 2004;14: 2176-2189.
- 10 37. Lurin C, Andrés C, Aubourg S, Bellaoui M, Bitton F, Bruyère C, Caboche M, Debast C,  
11 Gualberto J, Hoffmann B *et al.* Genome-wide analysis of *Arabidopsis* pentatricopeptide  
12 repeat proteins reveals their essential role in organelle biogenesis. *Plant Cell*. 2004;16: 2089-  
13 2103.
- 14 38. Gagnot S, Tamby JP, Martin-Magniette ML, Bitton F, Taconnat L, Balzergue S, Aubourg  
15 S, Renou JP, Lecharny A, Brunaud V. CATdb: a public access to *Arabidopsis* transcriptome  
16 data from the URGV-CATMA platform. *Nucleic Acids Research*. 2008;36 (Database issue):  
17 D986-90.
- 18 39. Benjamini Y, Hochberg Y. Controlling the false discovery rate: a practical and powerful  
19 approach to multiple testing. *Journal of the Royal Statistical Society*. 1995;Series B, 57: 289-  
20 300.
- 21 40. Livak KJ, Schmittgen TD. Analysis of relative gene expression data using real-time  
22 quantitative PCR and the  $2^{-\Delta\Delta C(T)}$  Method. *Methods*. 2001;25: 402-408.
- 23 41. Ruepp A, Zollner A, Maier D, Albermann K, Hani J, Mokrejs M, Tetko I, Güldener U,  
24 Mannhaupt G, Münsterkötter M *et al.* The FunCat, a functional annotation scheme for

- 1 systematic classification of proteins from whole genomes. *Nucleic Acids Research*. 2004;32:  
2 5539-5545.
- 3 42. Gigolashvili T, Berger B, Mock HP, Müller C, Weisshaar B, Flügge UI. The transcription  
4 factor HIG1/MYB51 regulates indolic glucosinolate biosynthesis in *Arabidopsis thaliana*.  
5 *The Plant Journal*. 2007;50: 886-901.
- 6 43. Yan J, Zhang C, Gu M, Bai Z, Zhang W, Qi T, Cheng Z, Peng W, Luo H, Nan F *et al*.  
7 The Arabidopsis CORONATINE INSENSITIVE1 protein is a jasmonate receptor. *Plant Cell*.  
8 2009;21: 2220-2236
- 9 44. Ellis C, Turner JG. A conditionally fertile *coi1* allele indicates cross-talk between plant  
10 hormone signalling pathways in *Arabidopsis thaliana* seeds and young seedlings. *Planta*.  
11 2002;215: 549-556.
- 12 45. Stintzi A, Browse J. The Arabidopsis male-sterile mutant *opr3*, lacks the 12-  
13 oxophytodienoic acid reductase required for jasmonate synthesis. *Proceedings of the National*  
14 *Academy of Sciences USA*. 2000;97: 10625-10630.
- 15 46. Staswick PE, Tiryaki I, Rowe ML. Jasmonate response locus *JAR1* and several related  
16 Arabidopsis genes encode enzymes of the firefly luciferase superfamily that show activity on  
17 jasmonic, salicylic, and indole-3-acetic acids in an assay for adenylation. *Plant Cell*. 2002;14:  
18 1405-1415.
- 19 47. Hugouvieux-Cotte-Pattat N, Condemine G, Shevchik VE. Bacterial pectate lyases,  
20 structural and functional diversity. *Environmental Microbiology Rep*. 2014;6: 427-40.
- 21 48. Zhao Y, Hull AK, Gupta NR, Goss KA, Alonso J, Ecker JR, Normanly J, Chory J,  
22 Celenza JL. Trp-dependent auxin biosynthesis in Arabidopsis: involvement of cytochrome  
23 P450s CYP79B2 and CYP79B3. *Genes & Development*. 2002;16: 3100-3112.
- 24 49. Piotrowski M, Schemenewitz A, Lopukhina A, Müller A, Janowitz T, Weiler EW,

- 1 Oecking C. Desulfoglucosinolate sulfotransferases from *Arabidopsis thaliana* catalyze the  
2 final step in the biosynthesis of the glucosinolate core structure. Journal of Biological  
3 Chemistry. 2004;279: 50717-50725.
- 4 50. Celenza JL, Quiel JA, Smolen GA, Merrikh H, Silvestro AR, Normanly J, Bender J. The  
5 Arabidopsis ATR1 Myb transcription factor controls indolic glucosinolate homeostasis. Plant  
6 Physiology. 2005;137: 253-262.
- 7 51. Thilmony R, Underwood W, He SY. Genome-wide transcriptional analysis of the  
8 Arabidopsis thaliana interaction with the plant pathogen *Pseudomonas syringae* pv. tomato  
9 DC3000 and the human pathogen *Escherichia coli* O157:H7. The Plant Journal. 2006;46: 34-  
10 53.
- 11 52. Sham A, Al-Azzawi A, Al-Ameri S, Al-Mahmoud B, Awwad F et al. Transcriptome  
12 Analysis Reveals Genes Commonly Induced by *Botrytis cinerea* Infection, Cold, Drought and  
13 Oxidative Stresses in Arabidopsis. PloS One. 2014;9: e113718.
- 14 53. Bodnaryk RP. Effects of wounding on glucosinolates in the cotyledons of oilseed rape and  
15 mustard. Phytochemistry. 1992;31: 2671-2677.
- 16 54. Brader G, Tas E, Palva ET. Jasmonate-dependent induction of indoleglucosinolates in  
17 Arabidopsis by culture filtrates of the nonspecific pathogen *Erwinia carotovora*. Plant  
18 Physiology. 2001;126: 849-860.
- 19 55. Mikkelsen MD, Petersen BL, Glawischnig E, Jensen AB, Andreasson E, Halkier BA.  
20 Modulation of *CYP79* genes and glucosinolate profiles in Arabidopsis by defense signaling  
21 pathways. Plant Physiology. 2003;131: 297-308.
- 22 56. Mewis I, Appel HM, Hom A, Raina R, Schultz JC. Major signaling pathways modulate  
23 Arabidopsis glucosinolate accumulation and response to both phloem-feeding and chewing  
24 insects. Plant Physiology. 2005;138: 1149-1962.



- 1 57. Mewis I, Tokuhsa JG, Schultz JC, Appel HM, Ulrichs C, Gershenzon J. Gene expression  
2 and glucosinolate accumulation in *Arabidopsis thaliana* in response to generalist and  
3 specialist herbivores of different feeding guilds and the role of defense signaling pathways.  
4 *Phytochemistry*. 2006;67: 2450-2462.
- 5 58. Sasaki-Sekimoto Y, Taki N, Obayashi T, Aono M, Matsumoto F, Sakurai N, Suzuki H,  
6 Hirai MY, Noji M, Saito K, *et al.* Coordinated activation of metabolic pathways for  
7 antioxidants and defence compounds by jasmonates and their roles in stress tolerance in  
8 *Arabidopsis*. *The Plant Journal*. 2005;44: 653-668.
- 9 59. Chen Y, Pang Q, Dai S, Wang Y, Chen S, Yan X. Proteomic identification of  
10 differentially expressed proteins in *Arabidopsis* in response to methyl jasmonate. *Journal of*  
11 *Plant Physiology*. 2011;168: 995-1008.
- 12 60. Hull AK, Vij R, Celenza JL. *Arabidopsis* cytochrome P450s that catalyze the first step of  
13 tryptophan-dependent indole-3-acetic acid biosynthesis. *Proceedings of the National*  
14 *Academy of Sciences USA*. 2000;97: 2379-2384.
- 15 61. Xiufeng Y and Sixue C. Regulation of plant glucosinolate metabolism. *Planta*.  
16 2007;226:1343-1352.
- 17 62. Suza WP, Staswick PE. The role of JAR1 in Jasmonoyl-L: -isoleucine production during  
18 *Arabidopsis* wound response. *Planta*. 2008;227: 1221-32
- 19 63. Taki N, Sasaki-Sekimoto Y, Obayashi T, Kikuta A, Kobayashi K, Ainai T, Yagi K,  
20 Sakurai N, Suzuki H, Masuda T *et al.* 12-oxo-phytodienoic acid triggers expression of a  
21 distinct set of genes and plays a role in wound-induced gene expression in *Arabidopsis*. *Plant*  
22 *Physiology*. 2005;139: 1268-1283.
- 23 64. Ribot C, Zimmerli C, Farmer EE, Reymond P, Poirier Y. Induction of the *Arabidopsis*  
24 PHO1;H10 gene by 12-oxo-phytodienoic acid but not jasmonic acid via a CORONATINE

- 1 INSENSITIVE1-dependent pathway. *Plant Physiology*. 2008;147: 696-706.
- 2 65. Stotz HU, Mueller S, Zoeller M, Mueller MJ, Berger S. TGA transcription factors and  
3 jasmonate-independent COI1 signalling regulate specific plant responses to reactive  
4 oxylipins. *The Journal of Experimental Botany*. 2013;64: 963-975.
- 5 66. Wasternack C, Strnad M. Jasmonate signaling in plant stress responses and development -  
6 active and inactive compounds. *Nature Biotechnol*. 2016;2033: 604-13
- 7 67. Dugé De Bernonville T, Gaucher M, Flors V, Gaillard S, Paulin JP, Dat JF, Brisset MN.  
8 T3SS-dependent differential modulations of the jasmonic acid pathway in susceptible and  
9 resistant genotypes of *Malus spp.* challenged with *Erwinia amylovora*. *Plant Science*.  
10 2012;188-189: 1-9.
- 11 68. Clay NK, Adio AM, Denoux C, Jander G, Ausubel FM. Glucosinolate metabolites  
12 required for an Arabidopsis innate immune response. *Science*. 2009;323: 95-101.
- 13 69. Felix G, Duran JD, Volko S and Boller T. Plants have a sensitive perception system for  
14 the most conserved domain of bacterial flagellin. *The Plant Journal*. 1999;18: 265-276.
- 15 70. Nomura K, Melotto M, He SY. Suppression of host defense in compatible plant-  
16 *Pseudomonas syringae* interactions. *Current Opinion in Plant Biology*. 2005;8: 361-368.
- 17 71. Kjemtrup S, Nimchuk Z, Dangl JL. Effector proteins of phytopathogenic bacteria:  
18 bifunctional signals in virulence and host recognition. *Current Opinion in Microbiology*.  
19 2000;3: 73-78.
- 20 72. Gürlebeck D, Thieme F, Bonas U. Type III effector proteins from the plant pathogen  
21 *Xanthomonas* and their role in the interaction with the host plant. *Journal of Plant Physiology*.  
22 2006;163: 233-255.
- 23 73. Halkier BA, Gershenzon J. Biology and biochemistry of glucosinolates. *Annual Review*

- 1 of Plant Biology. 2006;57: 303-333.
- 2 74. Wittstock U, Burow M. Glucosinolate breakdown in Arabidopsis: mechanism, regulation  
3 and biological significance. Arabidopsis Book. 2010;8: e0134
- 4 75. Bednarek P, Pislewska-Bednarek M, Svatos A, Schneider B, Doubsky J, Mansurova M,  
5 Humphry M, Consonni C, Panstruga R, Sanchez-Vallet A *et al.* A glucosinolate metabolism  
6 pathway in living plant cells mediates broad-spectrum antifungal defense. Science. 2009;323:  
7 101-106.
- 8 76. Tierens KF, Thomma BP, Brouwer M, Schmidt J, Kistner K, Porzel A, Mauch-Mani B,  
9 Cammue BP, Broekaert WF. Study of the role of antimicrobial glucosinolate-derived  
10 isothiocyanates in resistance of Arabidopsis to microbial pathogens. Plant Physiology.  
11 2001;125: 1688-1699.
- 12 77. Aires A, Mota VR, Saavedra MJ, Monteiro AA, Simões M, Rosa EA, Bennett RN. Initial  
13 in vitro evaluations of the antibacterial activities of glucosinolate enzymatic hydrolysis  
14 products against plant pathogenic bacteria. Journal of Applied Microbiology. 2009;106: 2096-  
15 2105.
- 16 78. Condemine G, Dorel C, Hugouvieux-Cotte-Pattat N, Robert-Baudouy J. Some of the out  
17 genes involved in the secretion of pectate lyases in *Erwinia chrysanthemi* are regulated by  
18 *kdgR*. Mol Microbiol. 1992;6(21): 3199-211.
- 19 79. Beaulieu C, Boccara M, Van Gijsegem F. Pathogenic behaviour of pectinase-defective  
20 *Erwinia chrysanthemi* mutants on different plants. Molecular Plant-Microbe Interactions.  
21 1993;6: 197-202.
- 22 80. Staswick PE, Su W, Howell SH. Methyl jasmonate inhibition of root growth and  
23 induction of a leaf protein are decreased in an *A. thaliana* mutant. Proceedings of the National  
24 Academy of Sciences USA. 1992;89: 6837-6840.

## 1 **Figure legends**

2 **Fig 1. Global analysis of the *Arabidopsis* transcriptome in response to *D. dadantii***  
3 **infection.** A: Venn-diagram of up and down-regulated genes 12 and 24 hours post-inoculation  
4 (hpi). B: functional classification of the 61 genes up-regulated both 12 and 24 hpi.

5 **Fig 2. Tryptophan (Trp) and indole glucosinolate (IG) metabolic pathways.** All Trp and  
6 IG metabolism-related genes in black are up-regulated in response to *D. dadantii* inoculation.  
7 Genes in grey were absent from the CATMAv2 array repertoire. Tryptophan is the key  
8 precursor of the indole glucosinolates biosynthesis. The last step of the IG biosynthesis  
9 catalysed by the *CYP81F4* and *CYP81F2* genes is a diversification step of the final products.  
10 Indole glucosinolates are then compartmented. Upon tissue disruption by chewing insects or  
11 macerogenic pathogens, the action of hydrolases leads to the production of various highly toxic  
12 and instable breakdown products (simple nitrile, epithionitrile, thiocyanate) involved in  
13 pathogen resistance.

14 **Fig 3. Transcriptome validation by qRT-PCR.** Transcript accumulation of representative  
15 Trp, IG and JA-related genes after *D. dadantii* (A) or buffer (B) inoculation was analysed by  
16 qRT-PCR. Fold changes were normalised to 0 hpi for each gene (set to one). Error bars show  
17 the experimental values of the two biological repeats.

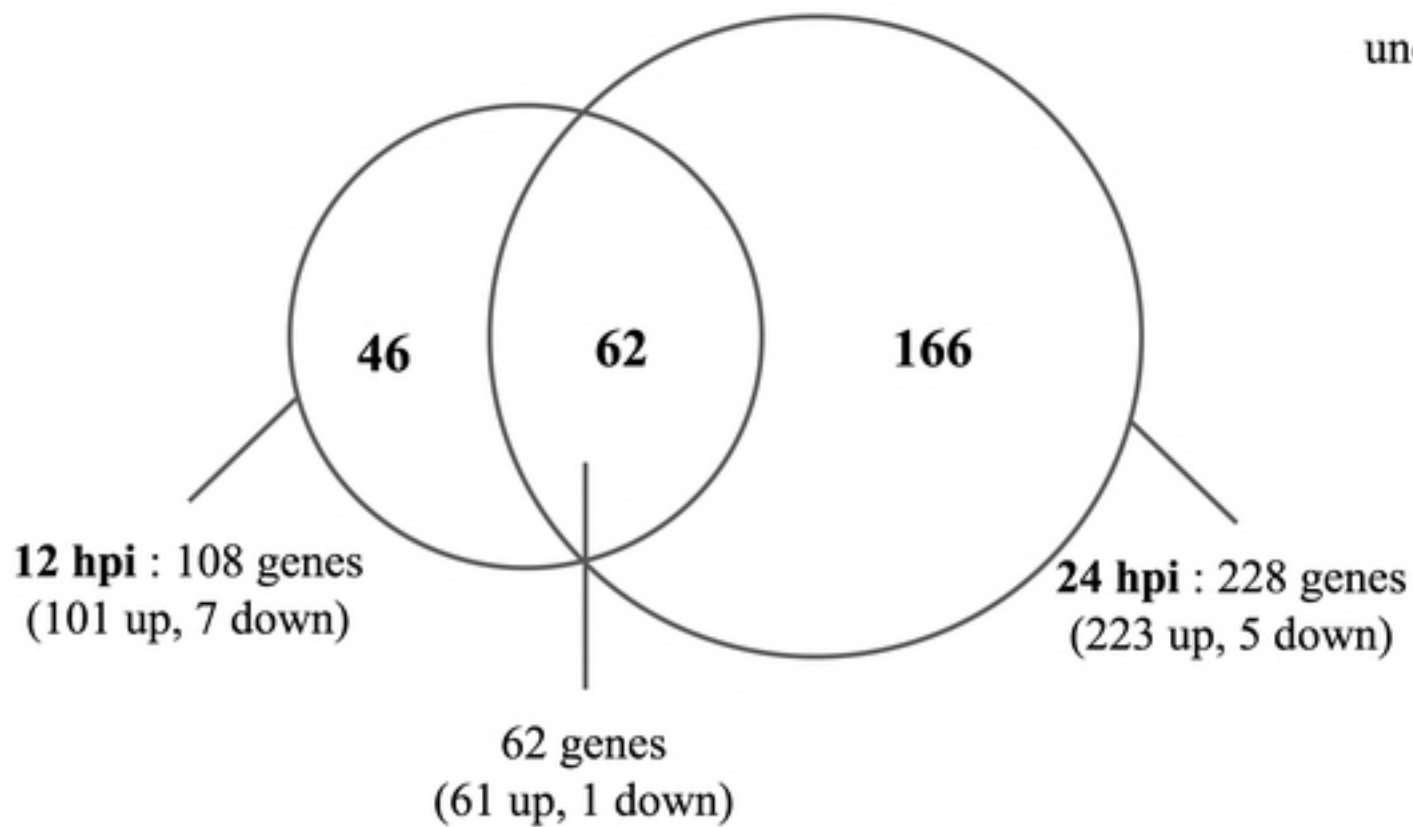
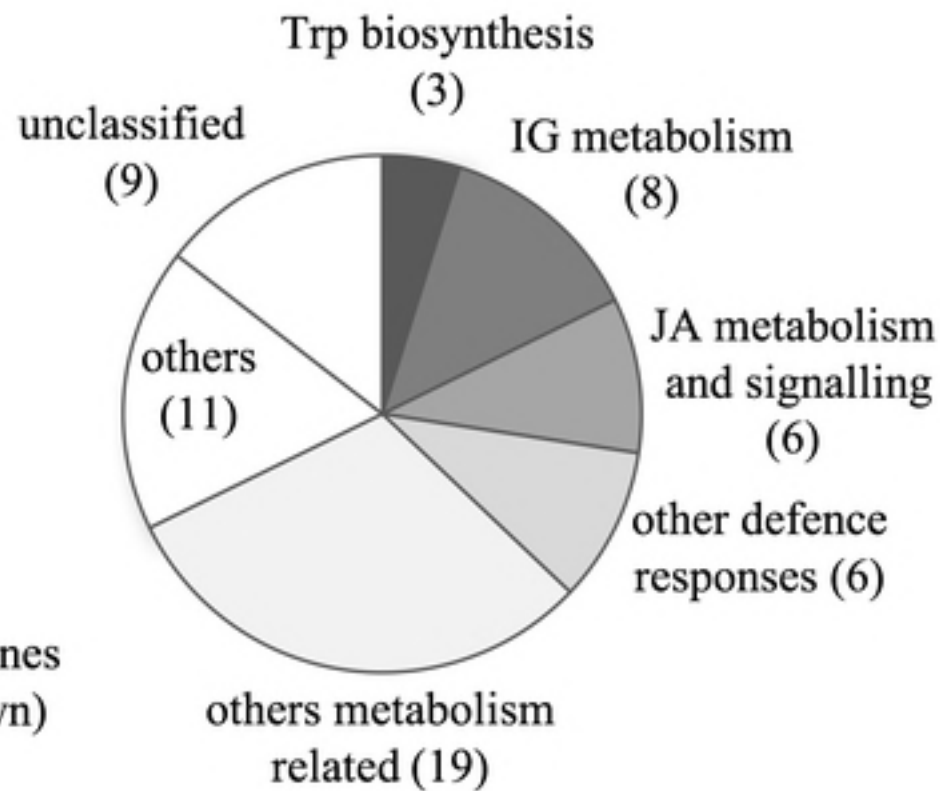
18 **Fig 4. Involvement of the JA pathway on IG biosynthesis gene expression.** Transcript  
19 accumulation of two representative IG biosynthesis genes *CYP79B2* (A) and *SOT16* (B) was  
20 analysed by qRT-PCR 24 hours after *D. dadantii* inoculation on Col-0 wild type *Arabidopsis*  
21 and mutants impaired in JA biosynthesis (*jar1*) or impaired in JA sensitivity (*coi1*). Fold  
22 changes were normalised to 0 hpi for each *Arabidopsis* genotype (set to one). Error bars show  
23 the experimental values of the two biological repeats.

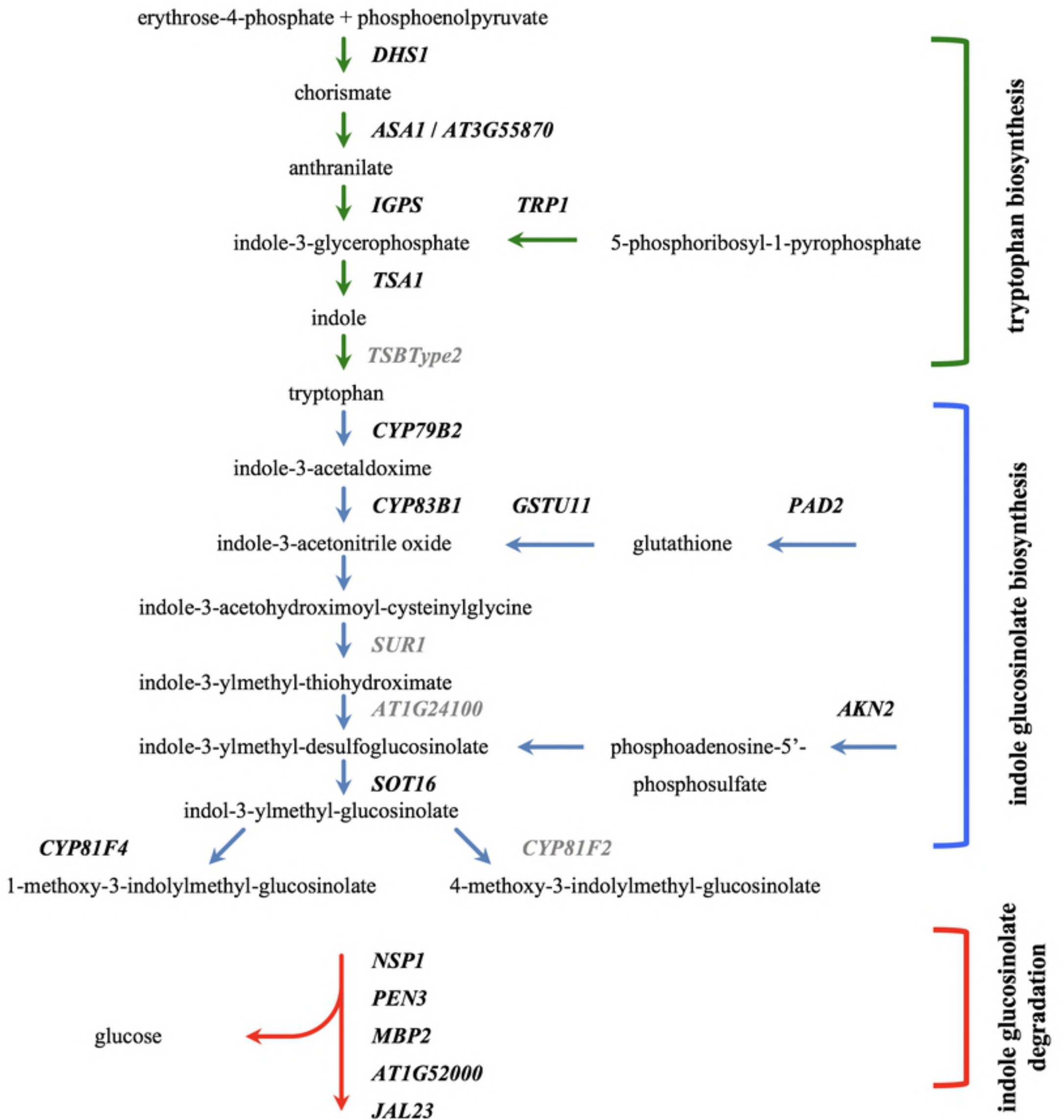
24

1 **Fig 5. Analysis of bacterial protein secretion system requirement for IG and JA**  
2 **biosynthesis regulation.** Transcript accumulation of two representative IG biosynthesis  
3 genes *CYP79B2* (A) and *SOT16* (B) and of two representative JA biosynthesis genes *LOX2*  
4 (C) and *OPR3* (D) was analysed by qRT-PCR. Inoculations were performed with buffer  
5 inoculation, *D. dadantii* wild type strain (3937) and mutants altered in bacterial protein  
6 secretion systems inoculation (*prtE* type I, *outC* type II and *hrcC* type III) on Col-0 wild type  
7 *Arabidopsis*. Fold changes were normalised to 0 hpi for each inoculation condition (set to  
8 one). Error bars show the experimental values of the two biological repeats.

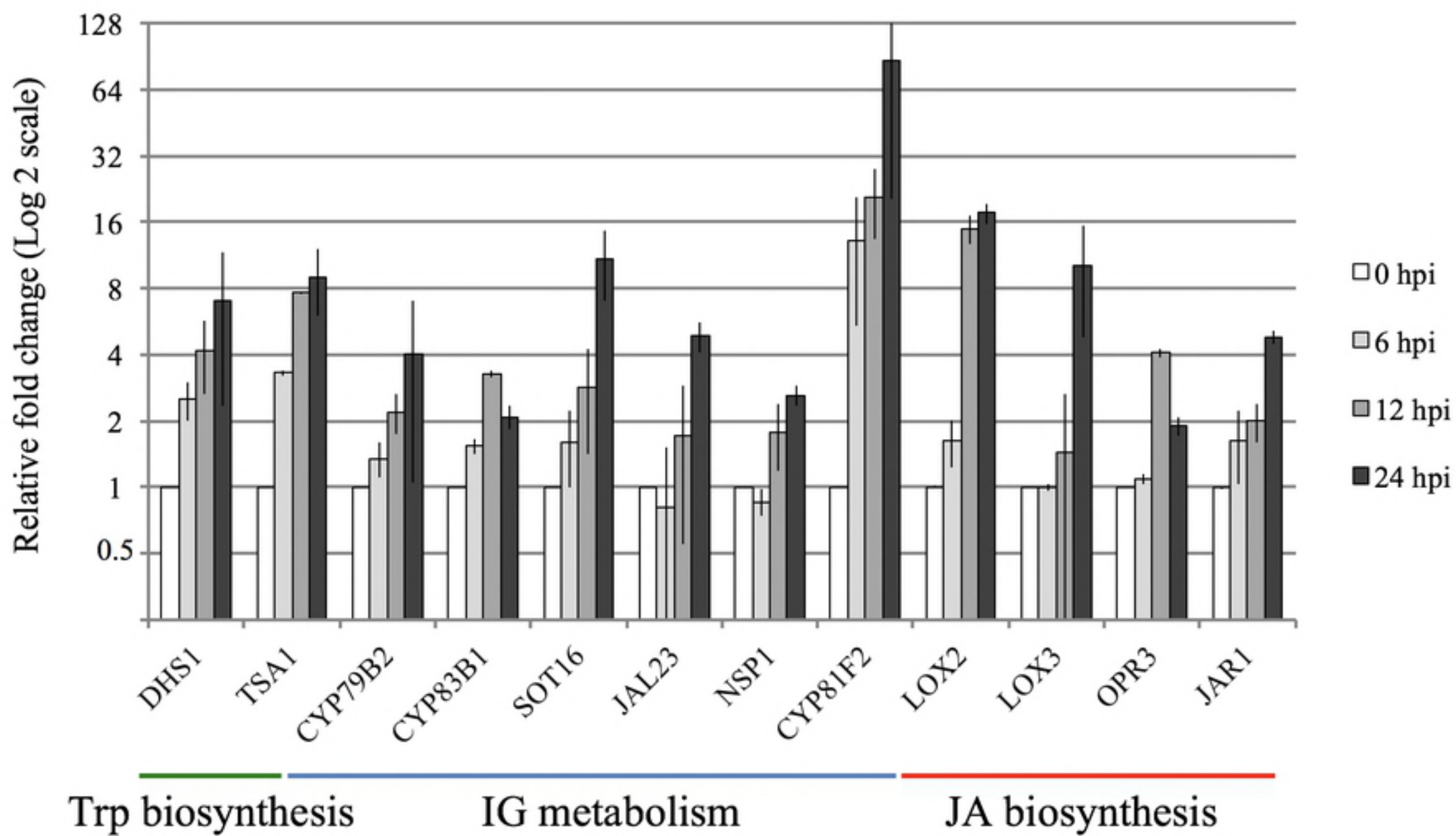
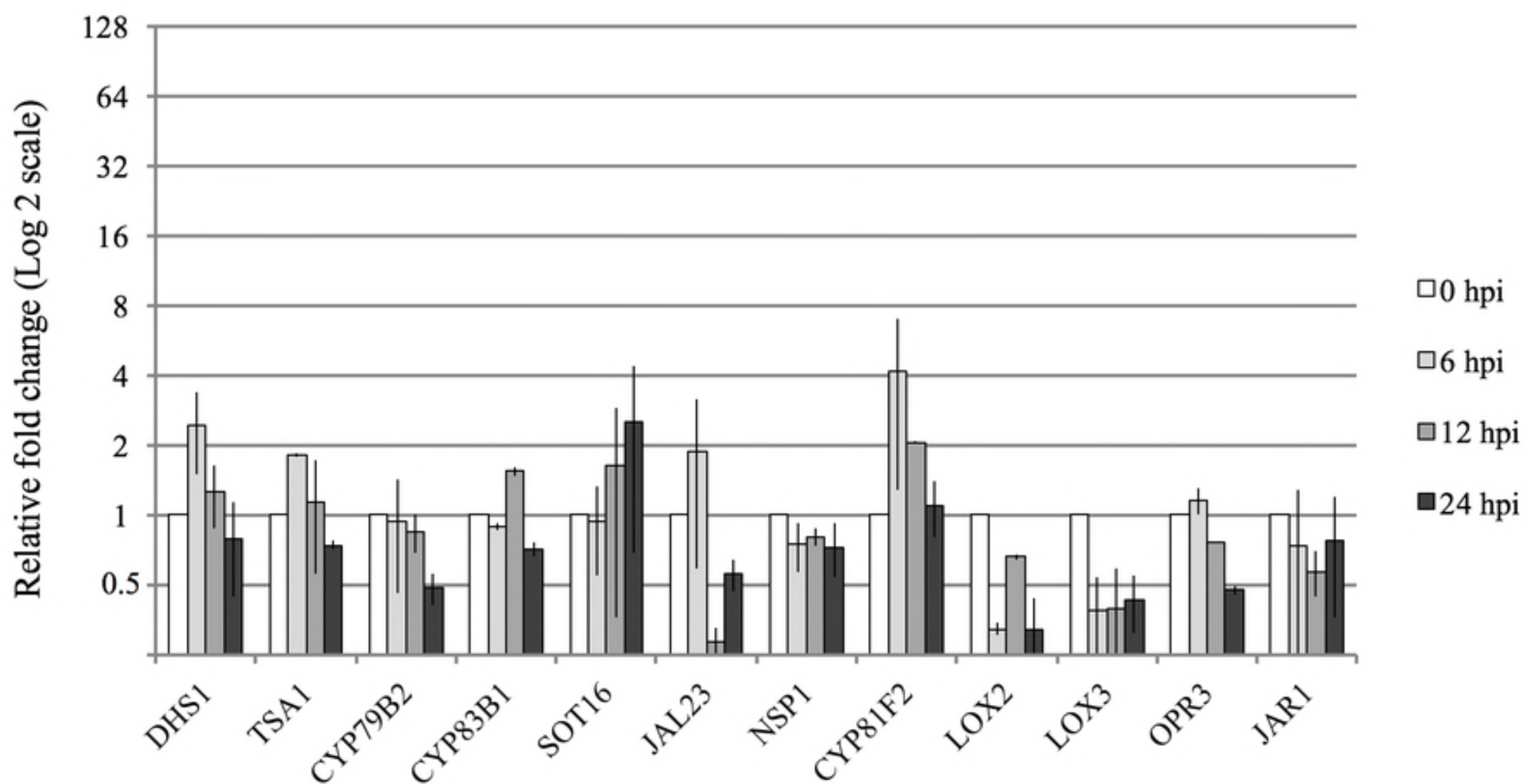
9 **Fig 6 Effect of a  $\Delta pel$  mutation altering the five major pectate lyases synthesis on IG and**  
10 **JA biosynthesis induction.** Expression of *CYP79B2* and *SOT16* IG biosynthesis genes, and  
11 *LOX2* and *OPR3* JA biosynthesis genes was analysed by qRT-PCR after infection by *D.*  
12 *dadantii* (3937) wild type strain and the  $\Delta pel$  mutant impaired in the synthesis of the five  
13 major pectate lyases PelABCDE. Fold changes were normalised to 0 hpi values for each (set  
14 to one). Error bars show the experimental values of the two biological repeats.

15 **Fig 7 Disease severity on *Arabidopsis* wild type strain and mutants impaired in JA**  
16 **sensitivity or biosynthesis (A) and IG biosynthesis (B).** Symptoms were scored during five  
17 days post inoculation on Col-0 and mutants using the following symptom severity scale: 0 =  
18 no symptom, 1 = maceration restricted to the site of inoculation, 2 = maceration extending  
19 from the site of inoculation, 3 = maceration covering the whole leaf (C). \* and  $\Delta$  indicate that  
20 score frequency of the highest degree of symptom (scored 3) and of plant with no symptom  
21 (scored 0) respectively are statistically different from the wild type one (Fisher's exact test,  
22 two sided p-value < 0.05). Phenotypic analysis was performed on 36 individual plants and  
23 was repeated at least twice with similar results.

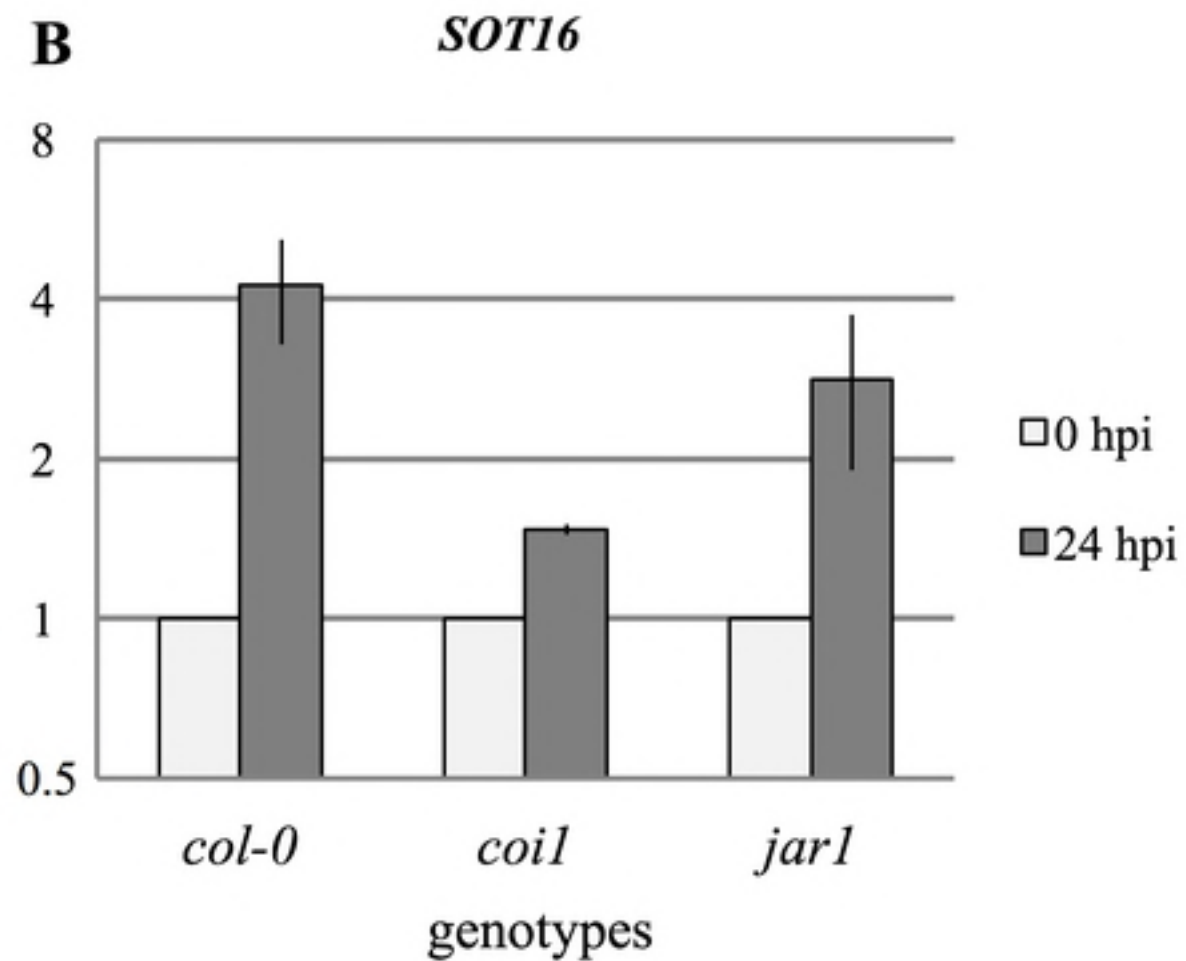
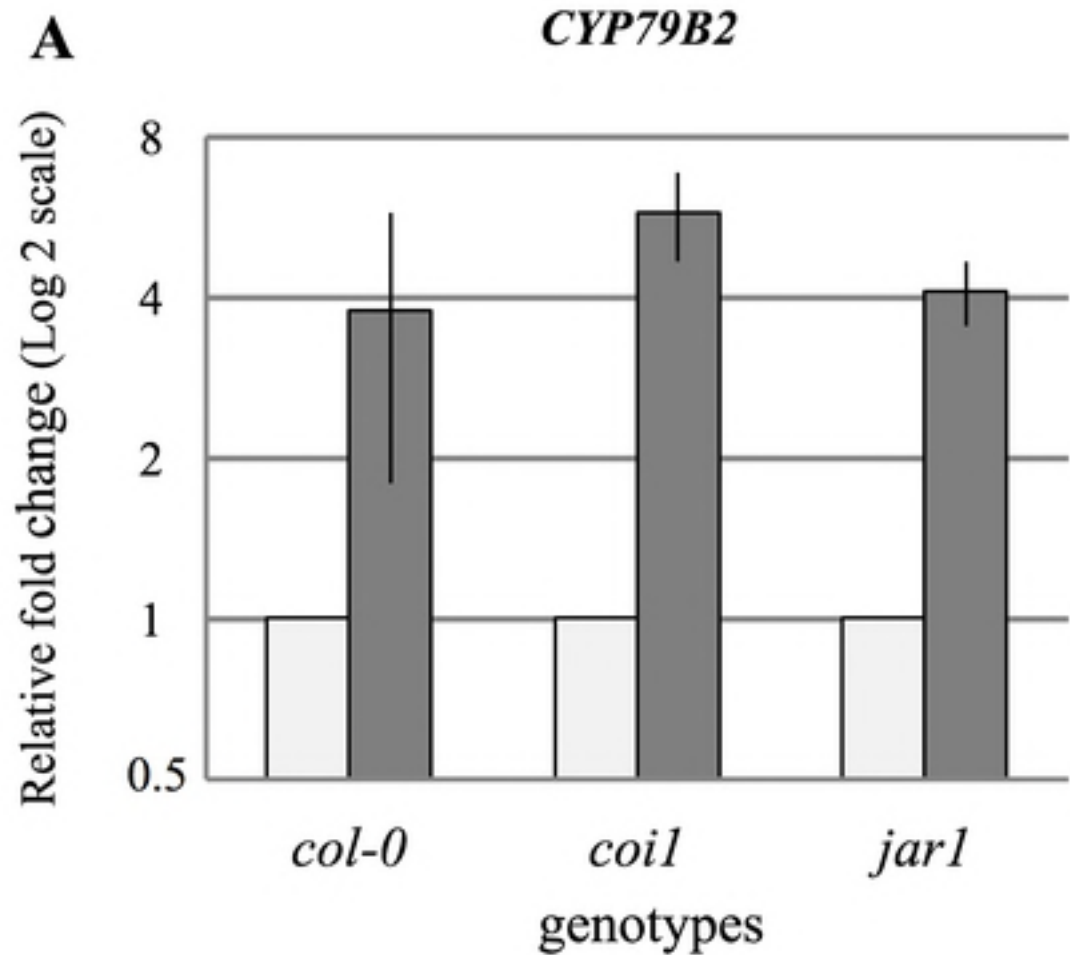
**A****B**

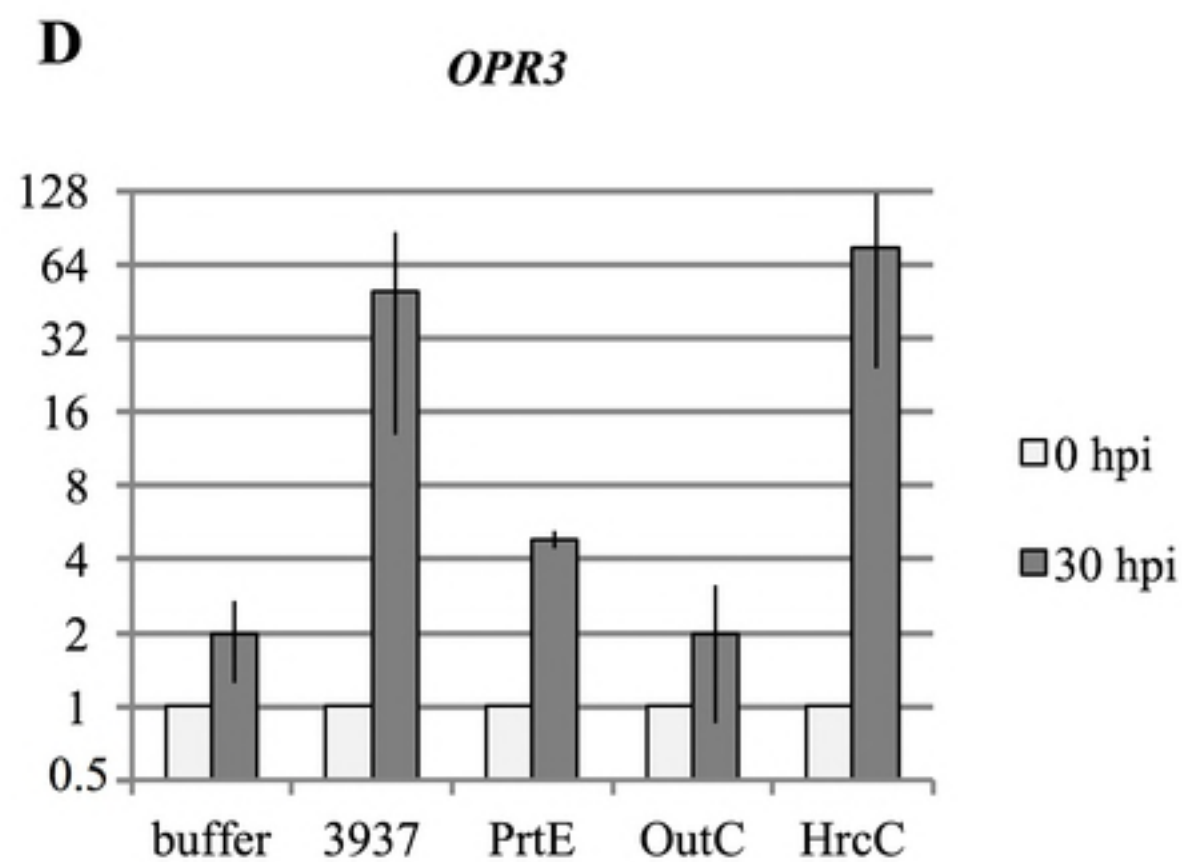
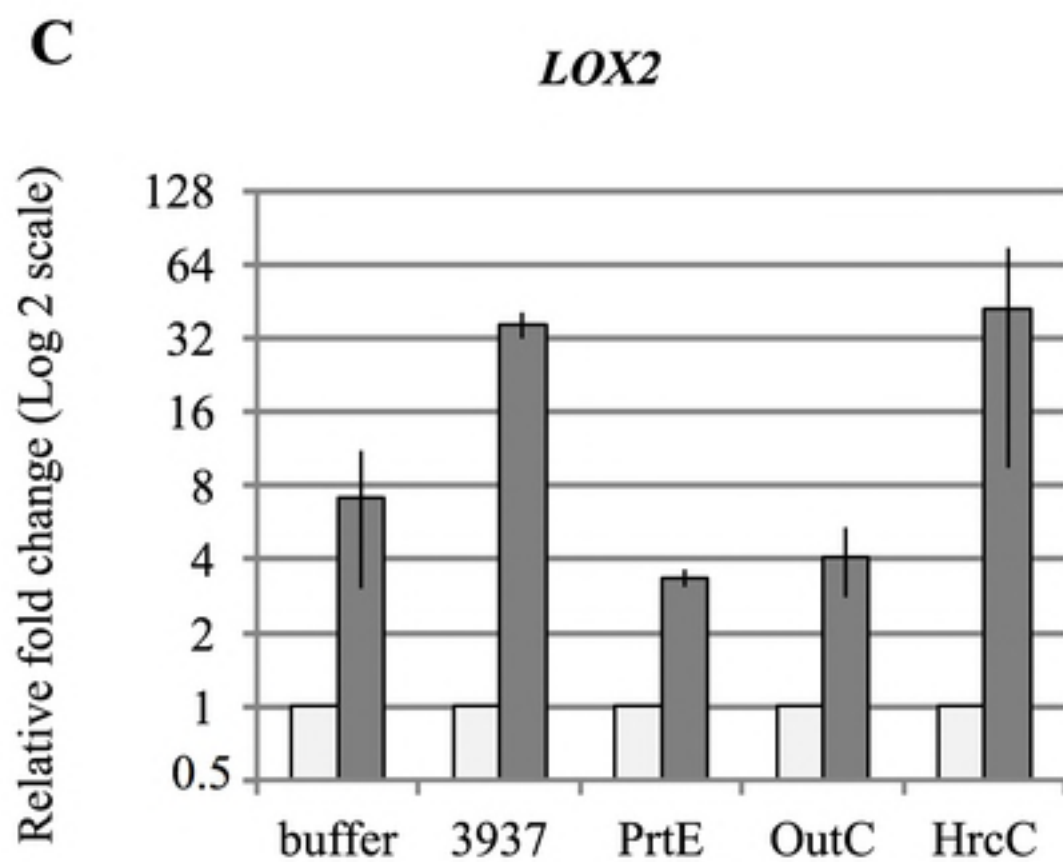
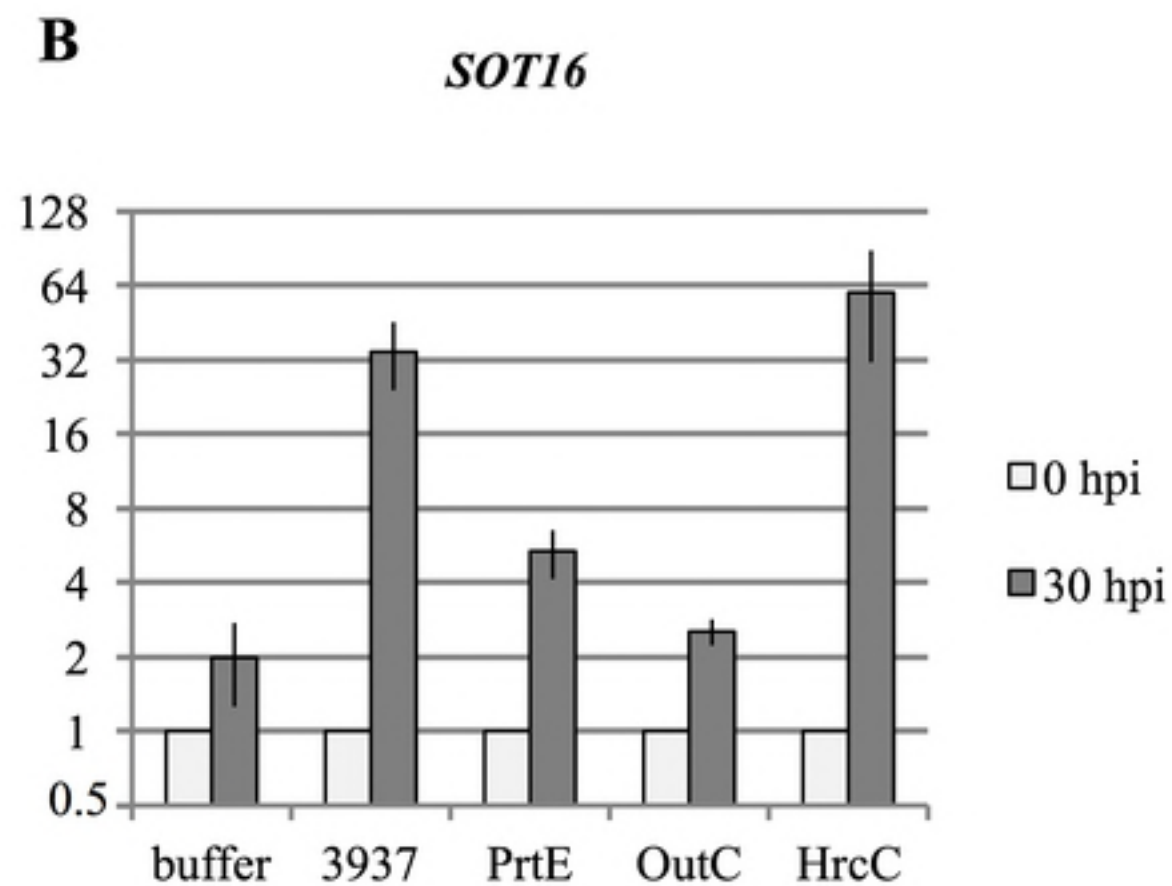
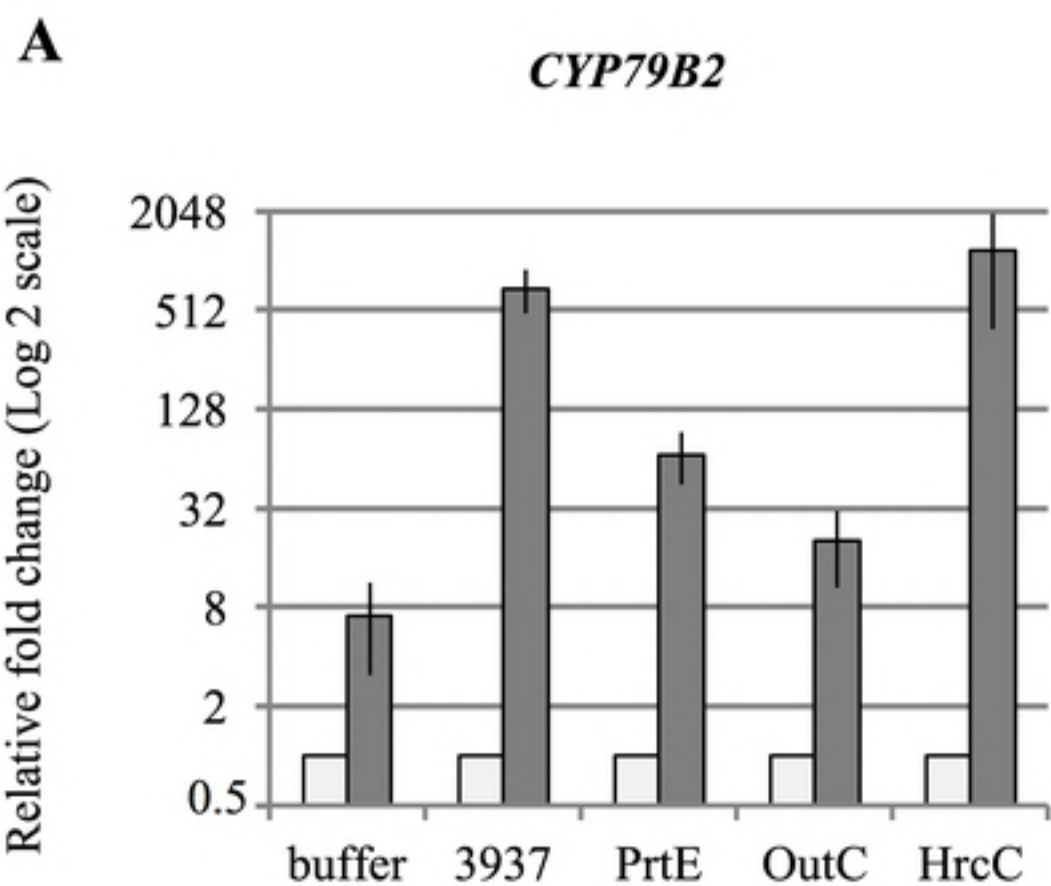


toxic compounds (isothiocyanate / thiocyanate / epithionitrile...)

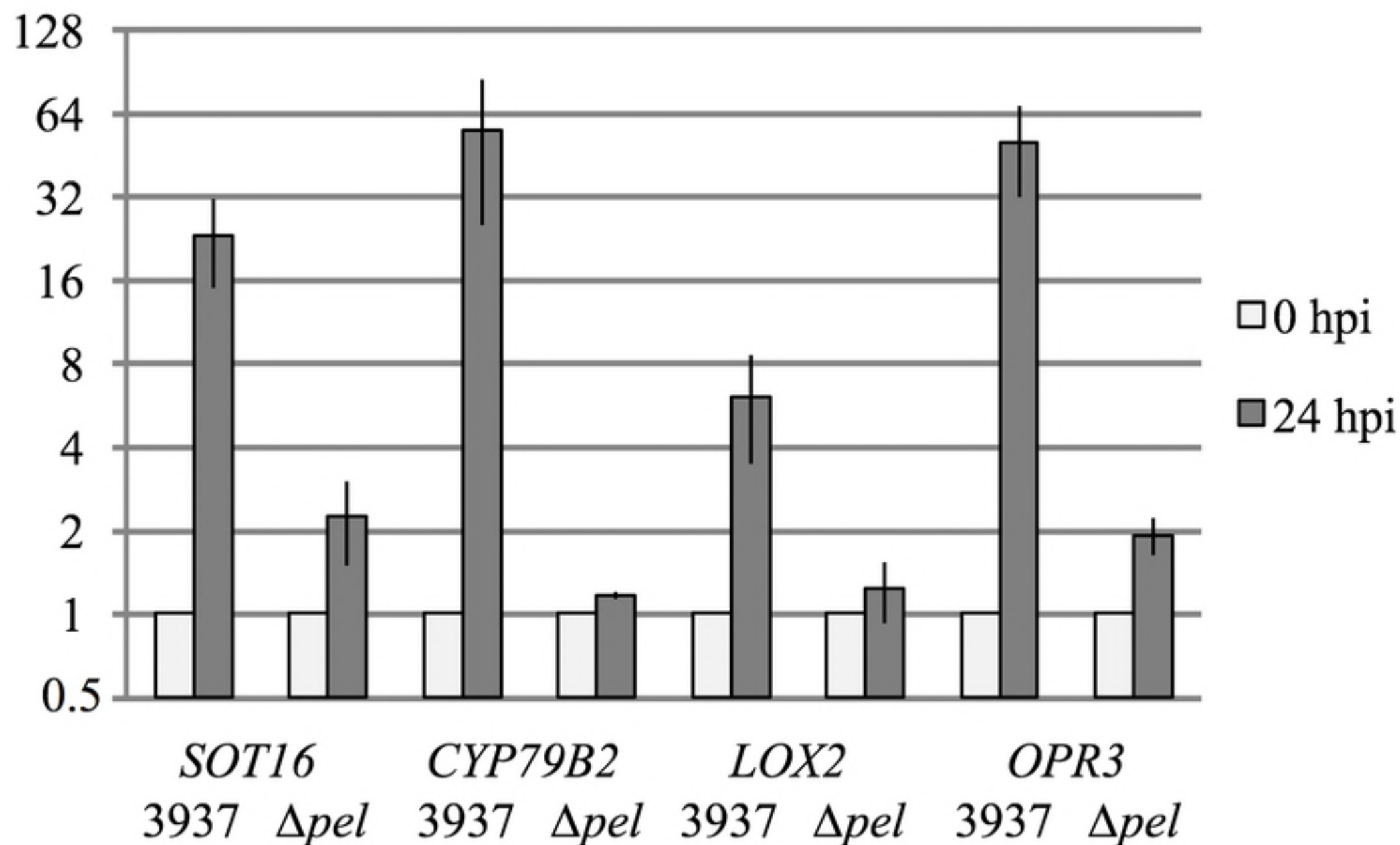
**A*****D. dadantii* infection****B****buffer inoculation**







Relative fold change (Log<sub>2</sub> scale)

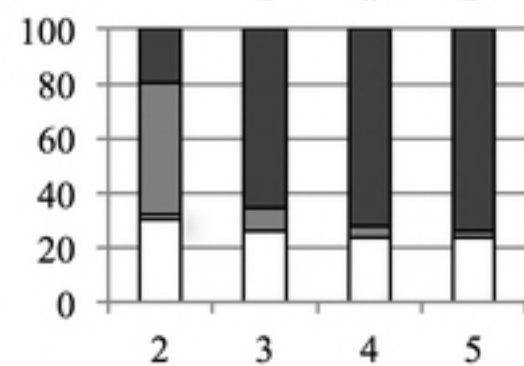
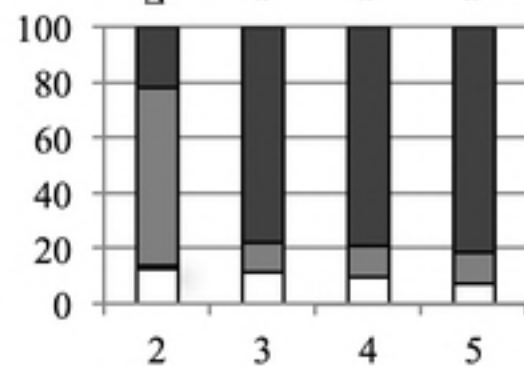
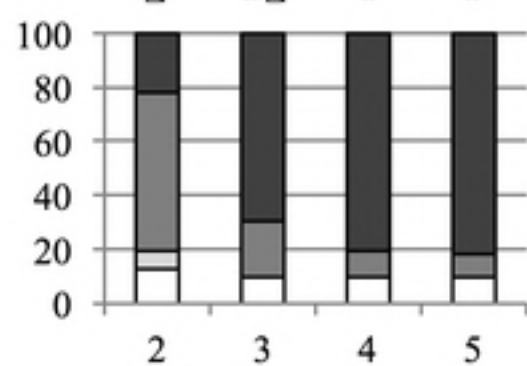
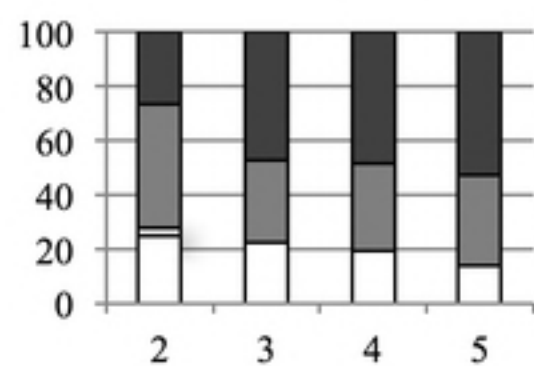


**A**

Col-0

*coil**jar1**opr3*

% score frequency



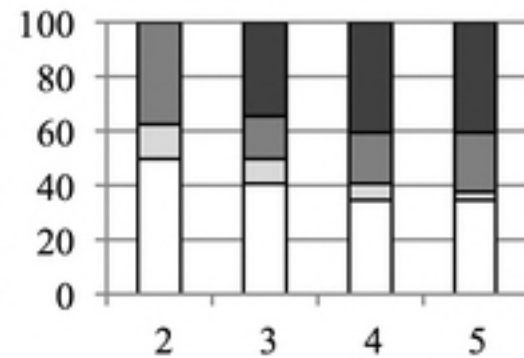
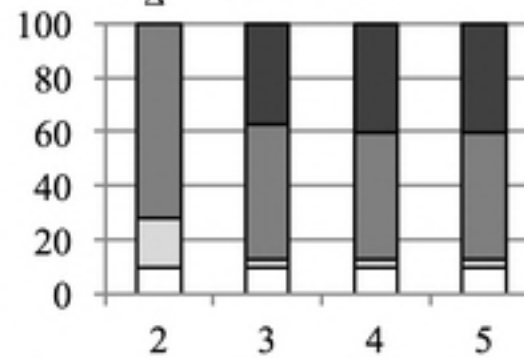
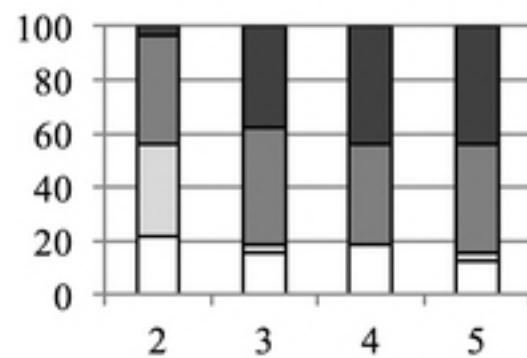
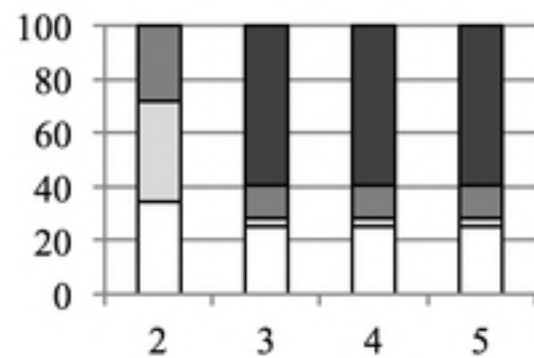
days post inoculation

**B**

Col-0

*atr1*Δ *cyp79 B2B3**sot16*

% score frequency



days post inoculation

**C**

□ 0

□ 1

■ 2

■ 3

symptoms scores