



**HAL**  
open science

## Modelling the interaction between soil processes

Sophie Leguédais

► **To cite this version:**

Sophie Leguédais. Modelling the interaction between soil processes. SAGA - Soil functions Along a Gradient of Anthropisation. IUFRO 125th Anniversary congress, 2017. hal-02787020

**HAL Id: hal-02787020**

**<https://hal.inrae.fr/hal-02787020>**

Submitted on 5 Jun 2020

**HAL** is a multi-disciplinary open access archive for the deposit and dissemination of scientific research documents, whether they are published or not. The documents may come from teaching and research institutions in France or abroad, or from public or private research centers.

L'archive ouverte pluridisciplinaire **HAL**, est destinée au dépôt et à la diffusion de documents scientifiques de niveau recherche, publiés ou non, émanant des établissements d'enseignement et de recherche français ou étrangers, des laboratoires publics ou privés.



Distributed under a Creative Commons Attribution - ShareAlike 4.0 International License

# Modelling the interaction between soil processes

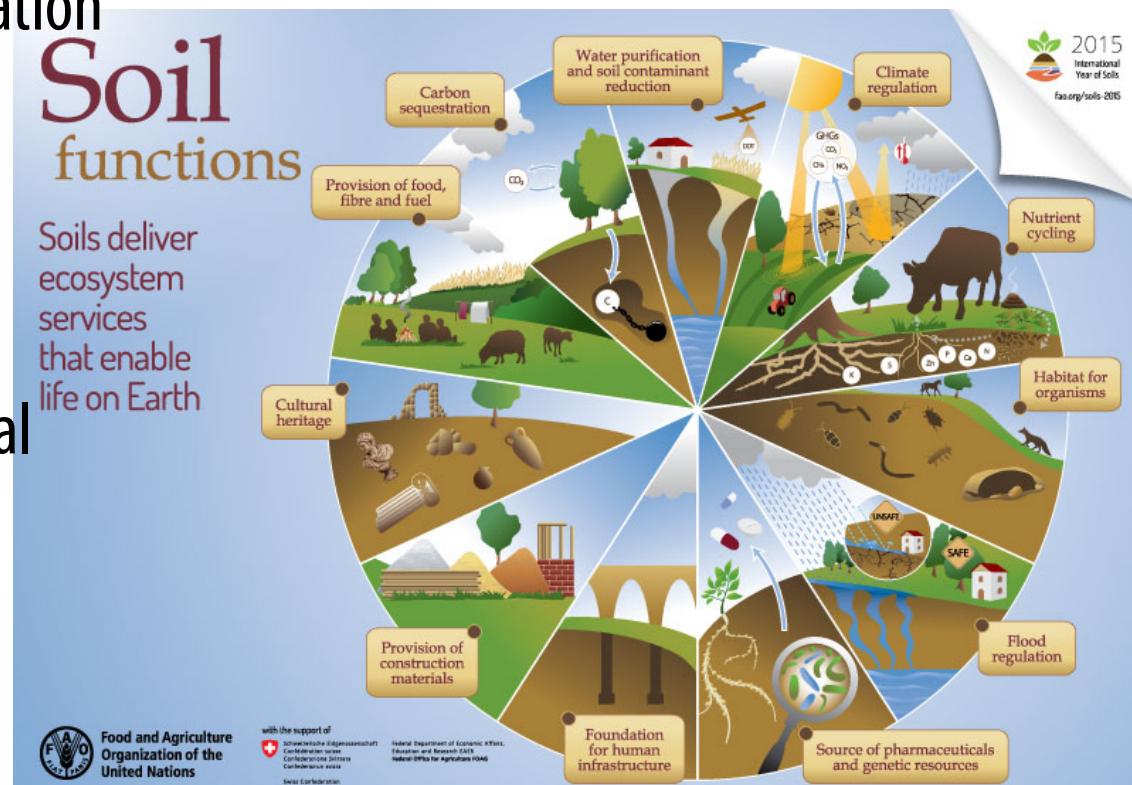
*Sophie Leguédais*

*Geoffroy Séré, Apolline Auclerc, Françoise Watteau, Frédéric Darboux,  
Christophe Schwartz, Jean Louis Morel*

*Laboratoire Sols et Environnement, Nancy, France*

# Why modelling the interaction between soil processes?

- For ecosystem services assessment
- To quantify the impact of global changes on soil and the role of soil on global changes
  - Climate change and C sequestration
  - Nitrogen cascade and denitrification
- To be able to represent soil along a gradient of anthropization
  - Physical, biological and chemical processes

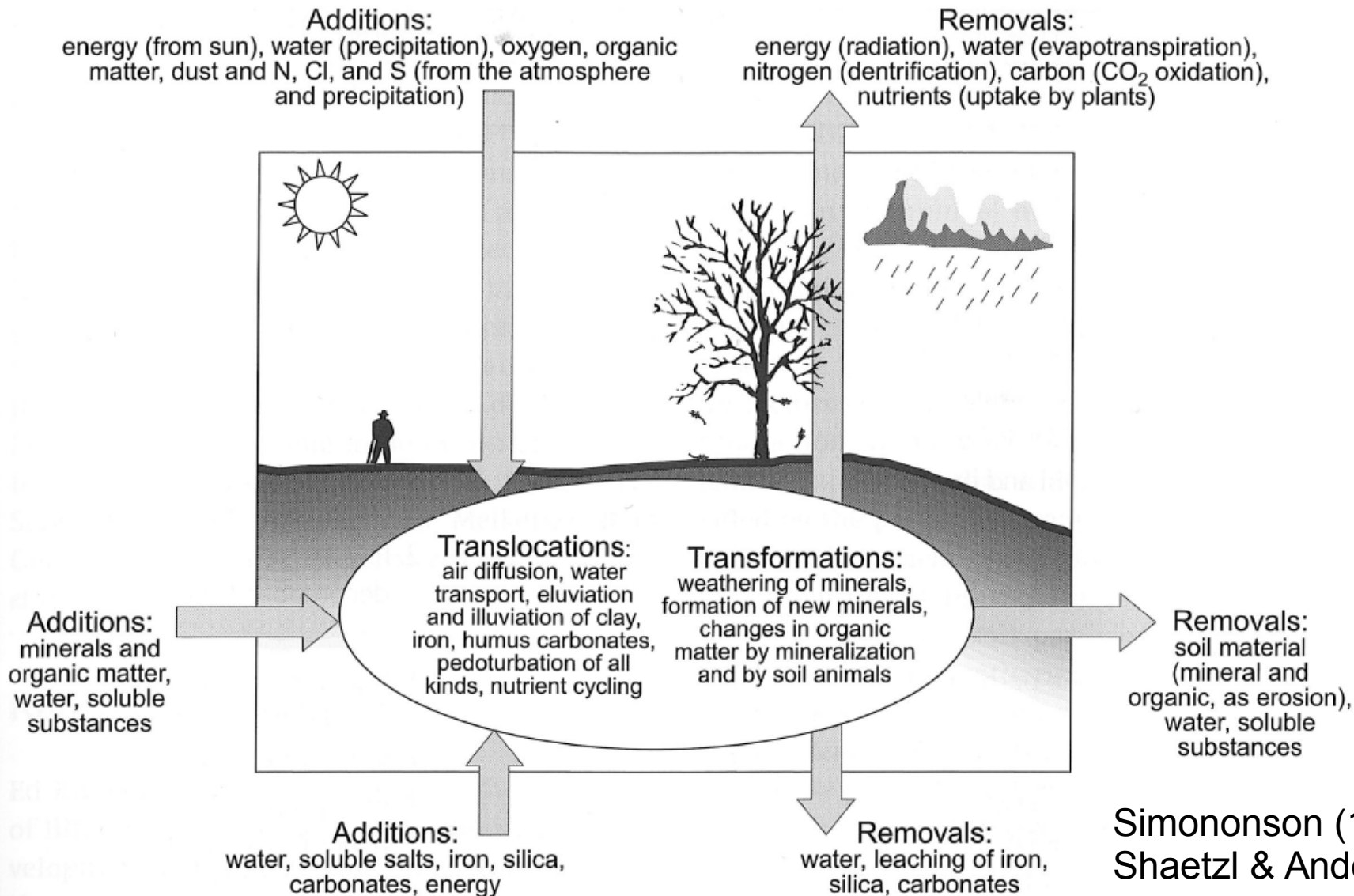


# Are processes the same in soils along a gradient of anthropization?

- What are your thoughts after those 4 days of summer school?

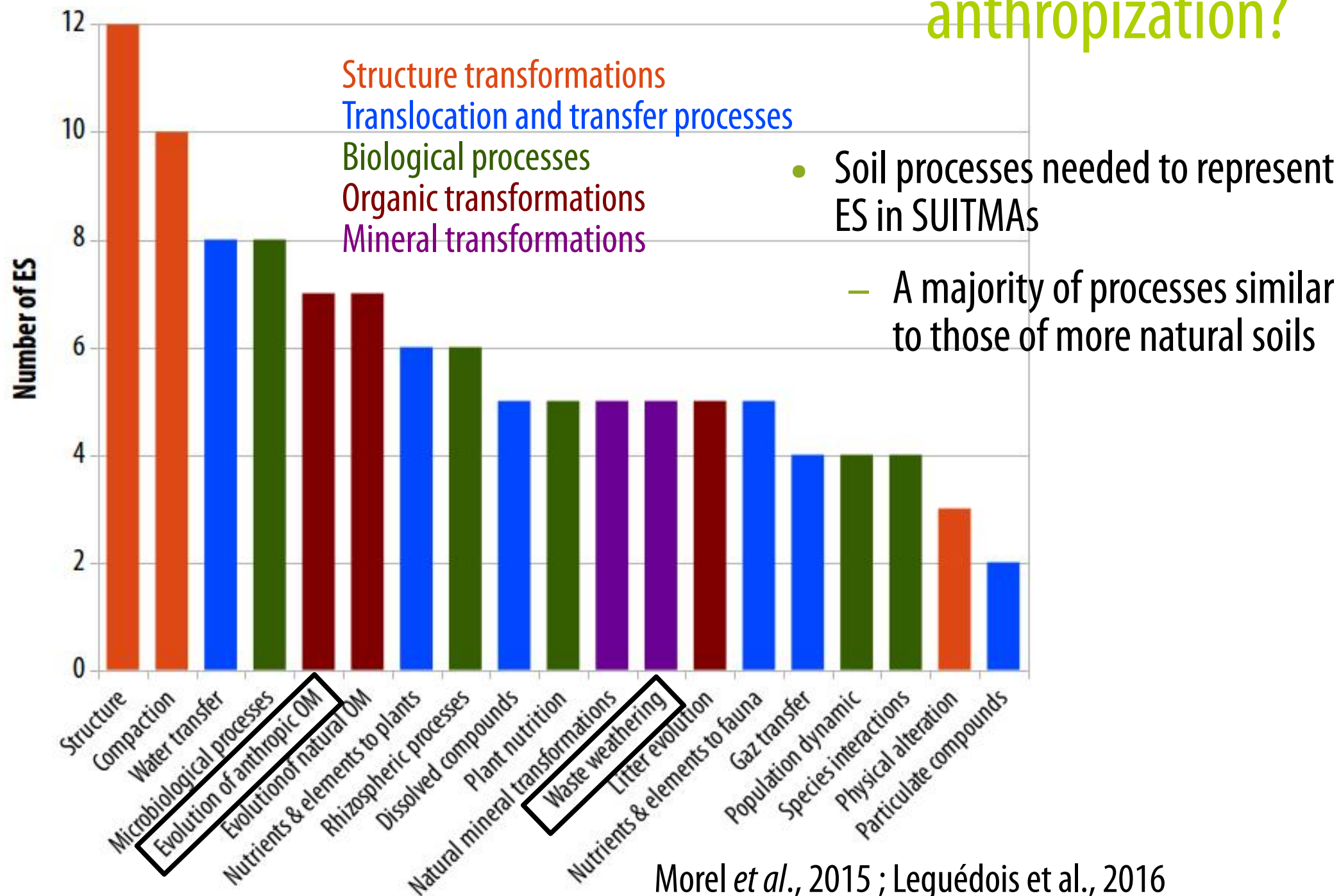
# Are processes the same in soils along a gradient of anthropization?

- Processes in “natural” soils



Simononson (1978)  
Shaetzi & Anderson (2005)

# Are processes the same in soils along a gradient of anthropization?



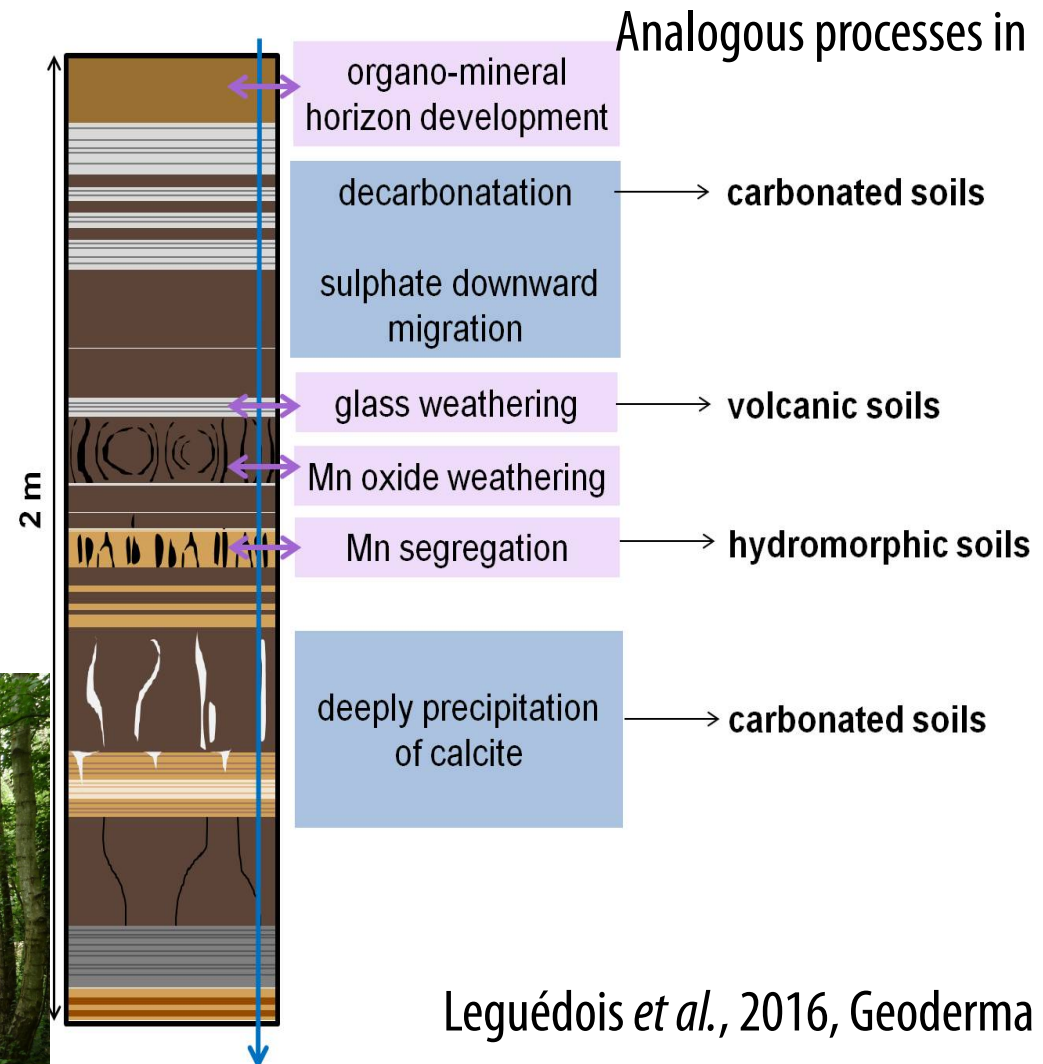


# Are processes the same in soils along a gradient of anthropization?

- Example: pedogenic processes observed in a Technosol
  - Occurrence of a wide variety of processes in SUITMAs
  - Unexpected combinations of processes

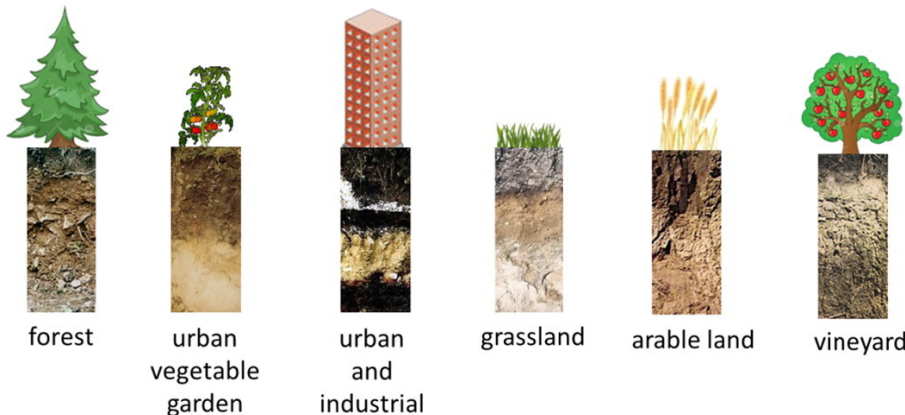
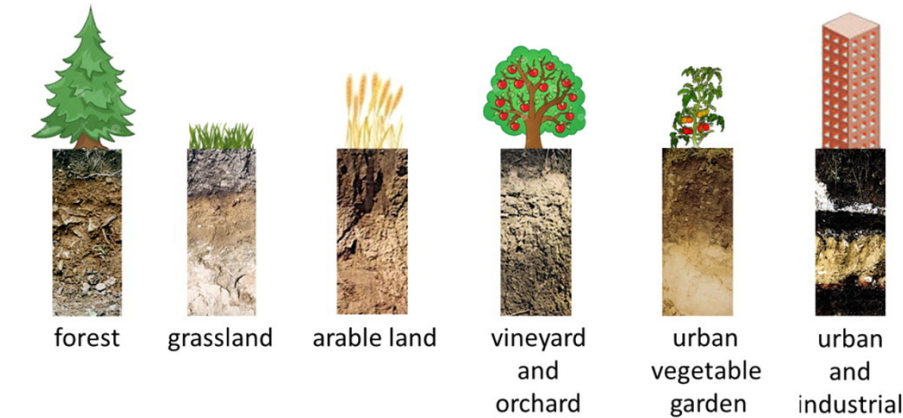


## Spolic Technosol



Leguédouis *et al.*, 2016, Geoderma  
Huot *et al.*, 2015, Soil Science

# Do processes act the same in soils along a gradient of anthropization?



- The gradient of quality identified for geochemical and biological parameters highlights the difference of intensity in the processes along the gradient of anthropization
- Strong interactions between processes

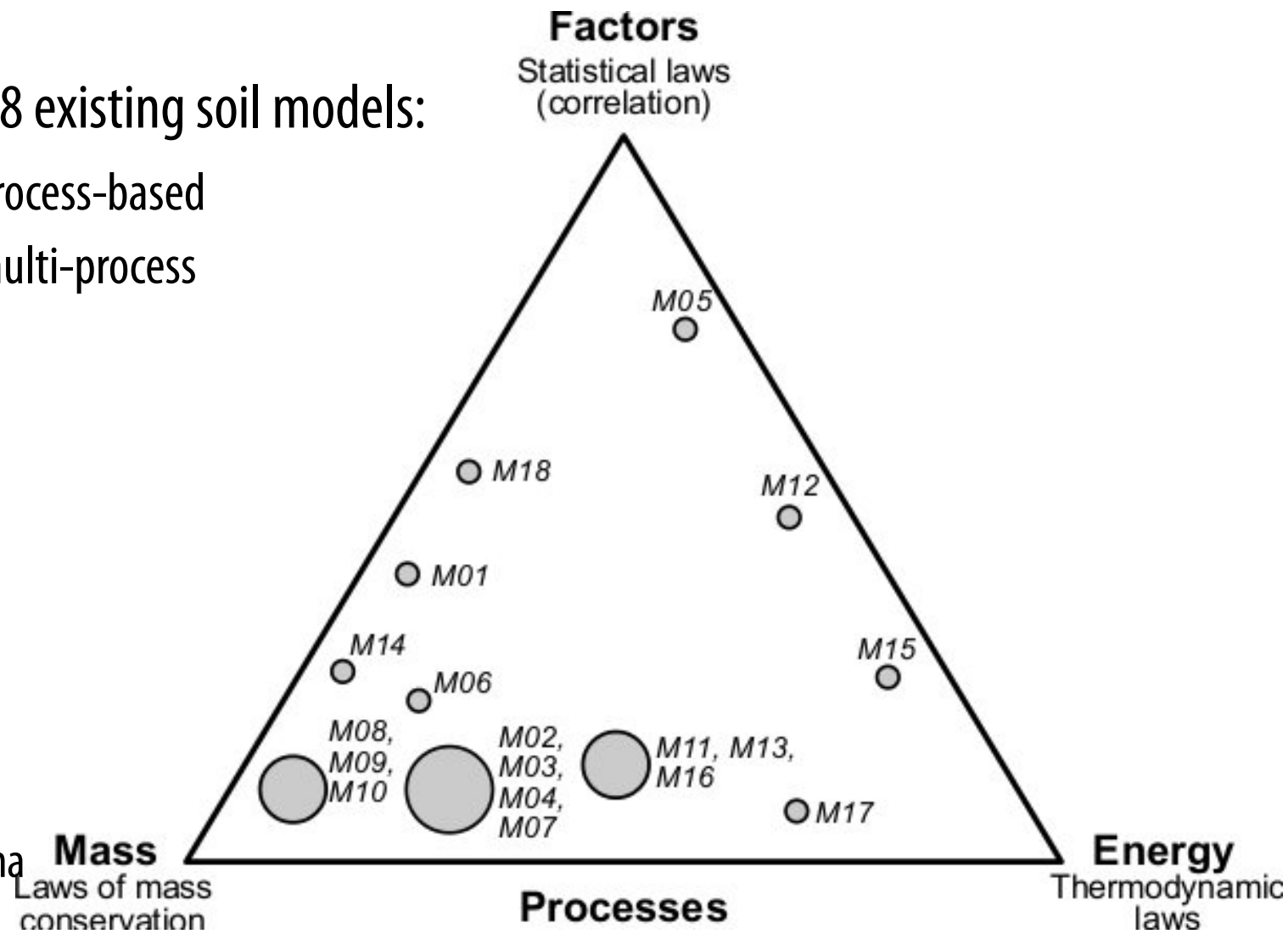


# How to model the processes?

- Most of the existing models of soil are process-based and multi-process

– Analysis on 18 existing soil models:

- 83% are process-based
- 67% are multi-process



# How to model the processes?

- Existing tools to couple process-based models able to cope with the diversity of formalisms (e.g. differential equations, agent-based)

- Coupling platforms like Sol Virtuel, Record

- Bergez et al, 2010

- VLE modelling environment/ DEVS

- Quesnel et al., 2009; Zeigler et al., 2000

- Link with computing and numerical calculus domains

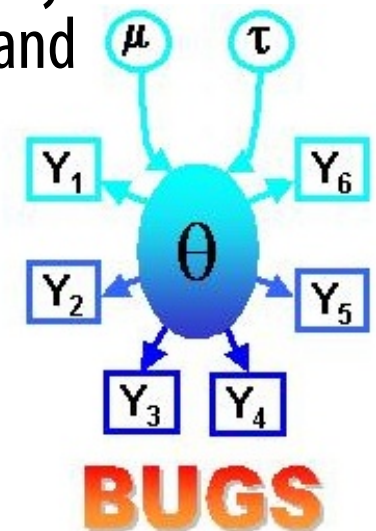


- Methods to handle complex codes with potential instability, difficulty in parametrisation and inverse modelling, high computing demand, and uncertainties on output data

- uncertainty and sensitivity analyses

- Saltelli et al. (2004)

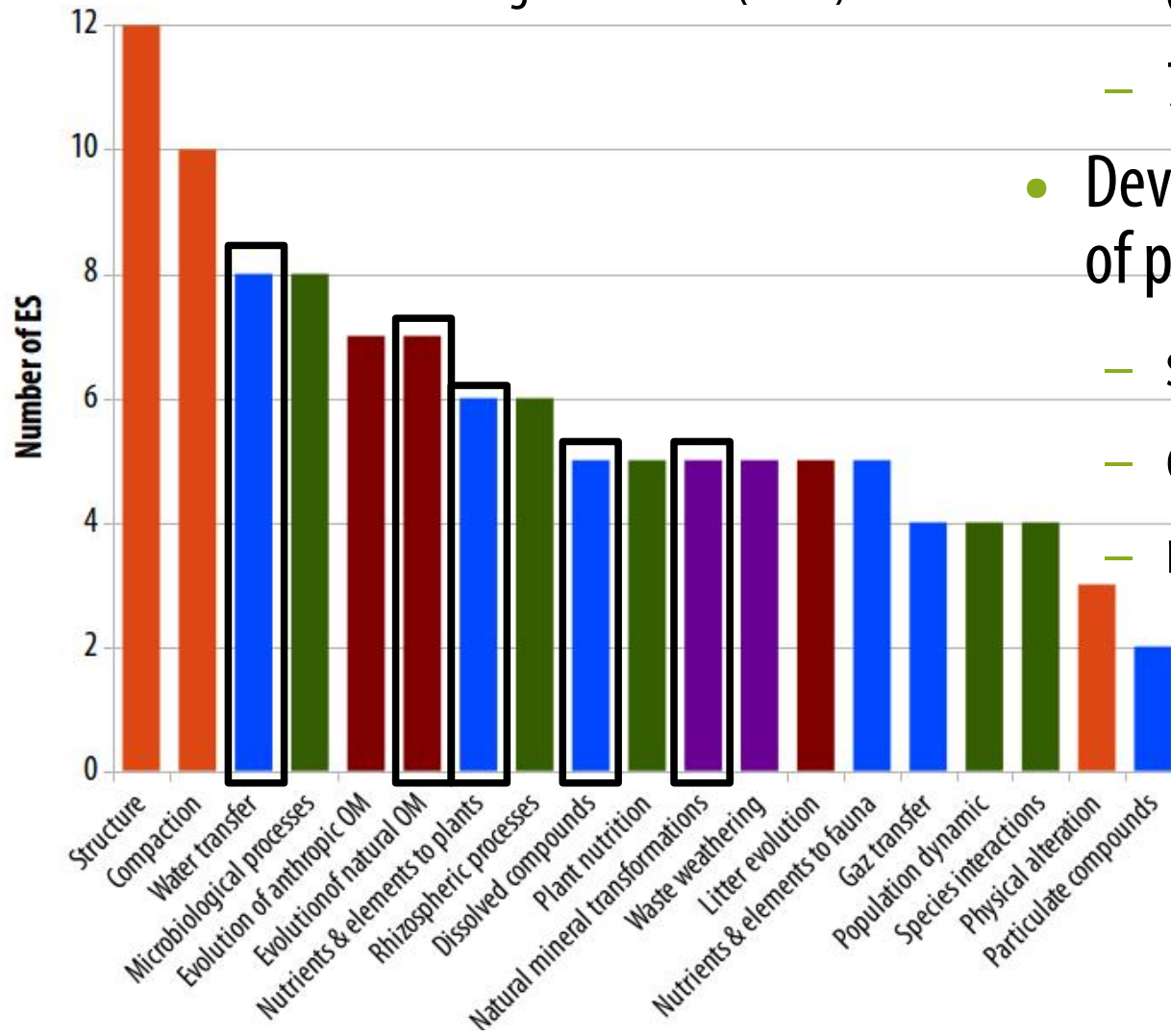
- Bayesian modelling



# Which processes to model?

## Soil processes needed to represent ES in SUITMAS

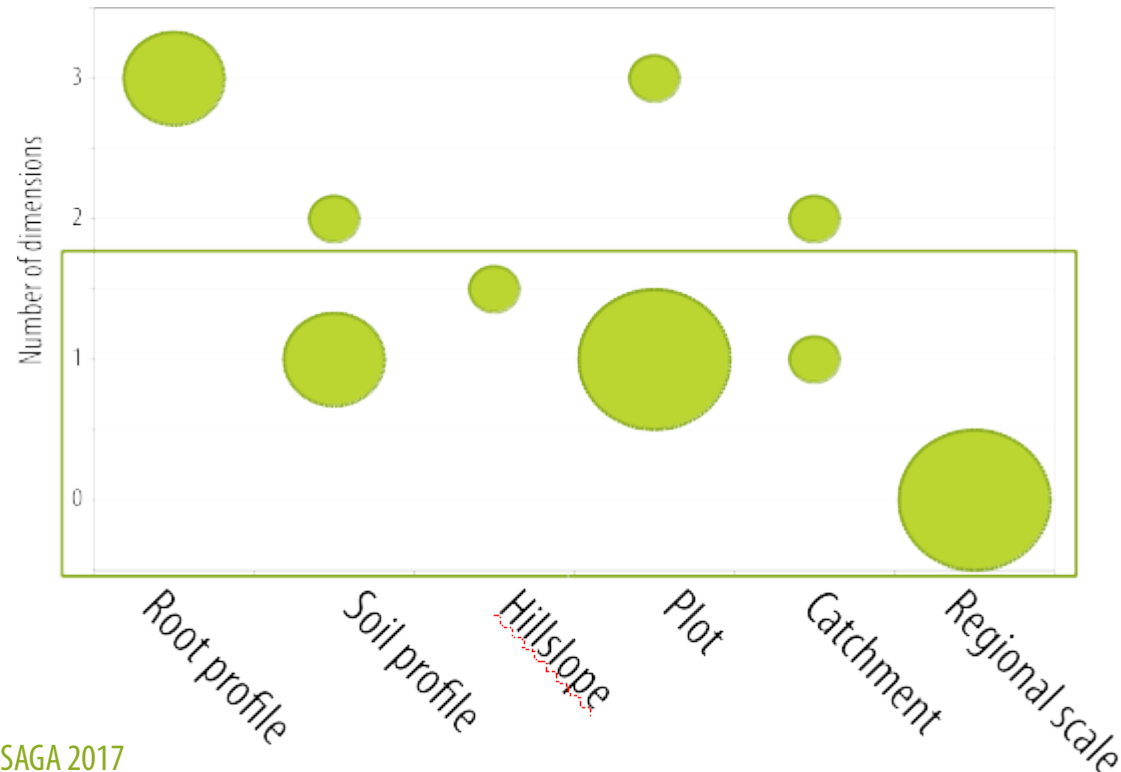
Leguédouis *et al* (2016)



- Analysis on 18 existing soil models:
  - 60 % represent water transfer
  - 73 % represent chemical reactivity
- Developments needed in the modeling of processes from SUITMAS related to:
  - structure
  - evolution of anthropic OM
  - microbiological activities

# Modelling challenge: heterogeneous spatial representation

- Generally poor spatial description of the existing models
- Importance of spatial heterogeneity
  - $\Leftrightarrow$  ecological intensification, lower fertiliser inputs, and no-tillage
    - Doré et al. (2011), Hinsinger et al., (2011)
  - $\Leftrightarrow$  highly heterogeneous spatial organisations observed in SUITMAs and forested soils
    - De Kimpe and Morel (2000), Huot et al. (2013), Monseriée et al. (2009)



# Conclusion

- Soil models have mainly been developed for agricultural or contaminated pollutions
  - Main modelled processes related to water transfer and chemical reactivity
  - Soil homogeneity due to tillage
- Development needed
  - Soil heterogeneity / structure evolution
  - Soil biological processes
- Existing technical tool to support complex coupled models
  - Coupling platform
  - UA and SA