



HAL
open science

The genetic structure of the European black pine (*Pinus nigra* Arnold) is shaped by its recent Holocene demographic history.

Guia Giovannelli, Caroline Scotti-Saintagne, Ivan Scotti, Anne Roig, Ilaria Spanu, Giovanni Giuseppe Vendramin, Frédéric Guibal, Bruno Fady

► To cite this version:

Guia Giovannelli, Caroline Scotti-Saintagne, Ivan Scotti, Anne Roig, Ilaria Spanu, et al.. The genetic structure of the European black pine (*Pinus nigra* Arnold) is shaped by its recent Holocene demographic history.. 2019. hal-02791732

HAL Id: hal-02791732

<https://hal.inrae.fr/hal-02791732>

Preprint submitted on 5 Jun 2020

HAL is a multi-disciplinary open access archive for the deposit and dissemination of scientific research documents, whether they are published or not. The documents may come from teaching and research institutions in France or abroad, or from public or private research centers.

L'archive ouverte pluridisciplinaire **HAL**, est destinée au dépôt et à la diffusion de documents scientifiques de niveau recherche, publiés ou non, émanant des établissements d'enseignement et de recherche français ou étrangers, des laboratoires publics ou privés.



Distributed under a Creative Commons Attribution 4.0 International License

The genetic structure of the European black pine (*Pinus nigra* Arnold) is shaped by its recent Holocene demographic history.

5 **Authors:** Guia Giovannelli^{1,2*}, Caroline Scotti-Saintagne^{1*}, Ivan Scotti¹, Anne Roig¹, Ilaria Spanu³,
Giovanni Giuseppe Vendramin³, Frédéric Guibal², Bruno Fady^{1**}

¹: INRA, UR629, Ecologie des Forêts Méditerranéennes (URFM), Domaine Saint Paul, 84914 Avignon, France

10 ²: Aix-Marseille Université, IMBE, Avenue Louis Philibert, Aix-en-Provence, France

³: Institute of Biosciences and BioResources, National Research Council (CNR), Via Madonna del Piano 10, 50019 Sesto Fiorentino (FI), Italy

*: Guia Giovannelli and Caroline Scotti-Saintagne contributed equally to this work

15 **: author for correspondence: [bruno.fady\(at\)inra.fr](mailto:bruno.fady@inra.fr)

Highlights

- The European black pine, *Pinus nigra* (Arnold), has a weak spatial genetic structure.
- Gene flow among populations is frequent and populations are often of admixed origin.
- 20 • Current genealogies result from recent, late Pleistocene or Holocene events.
- Seven modern genetic lineages emerged from divergence and demographic contractions.
- These seven lineages warrant a revision of subspecies taxonomic nomenclature.

25 **Abstract**

Fragmentation acting over geological times confers wide, biogeographical scale, genetic diversity patterns to species, through demographic and natural selection processes. To test the effects of historical fragmentation on the genetic diversity and differentiation of a major European forest tree and to resolve its demographic history, we describe and model its spatial genetic structure and gene
30 genealogy. We then test which Pleistocene event, whether recent or ancient, could explain its widespread but patchy geographic distribution using population genetic data, environmental data and realistic demographic timed scenarios.

The taxon of interest is a conifer forest tree, *Pinus nigra* (Arnold), the European black pine, whose populations are located in the mountains of southern Europe and North Africa, most frequently at mid-
35 elevation. We used a set of different genetic markers, both neutral and potentially adaptive, and either bi-parentally or paternally inherited, and we sampled natural populations across the entire range of the species. We analysed the data using frequentist population genetic methods as well as Bayesian inference methods to calibrate realistic, demographic timed scenarios.

Species with geographically fragmented distribution areas are expected to display strong among-
40 population genetic differentiation and low within-population genetic diversity. Contrary to these expectations, we show that the current diversity of *Pinus nigra* and its weak genetic spatial structure are best explained as resulting from late Pleistocene or early Holocene fragmentation of one ancestral population into seven genetic lineages, which we found to be the main biogeographical contributors of the natural black pine forests of today. Gene flow among the different lineages is strong across forests
45 and many current populations are admixed between lineages. We propose to modify the currently accepted international nomenclature made of five subspecies and name these seven lineages using regionally accepted subspecies-level names.

Keywords: Demographic inference, nuclear genes, organelle genes, gene flow, admixture, taxonomy.

50

1. Introduction

Species with geographically fragmented distribution areas are expected to display strong among-population genetic differentiation and low within-population genetic diversity, similarly to biogeographic islands (Mac Arthur & Wilson 1967). This is because gene flow will necessarily be low among long-separated fragments while isolated fragments, if small enough, will lose diversity because of genetic drift and inbreeding (Young et al., 1996). Such patterns are often found in the wild, both in animals and in plants and both when distribution areas are large or small (e.g. Riginos & Liggins 2013; Young et al., 1996). However, examples also abound in both animals and plants, where, despite fragmentation, among population genetic differentiation remains low or modest (e.g. the European mountain pine *Pinus mugo* (Heuertz et al., 2010) or the North American white-footed mouse *Peromyscus leucopus* (Mossman & Waser, 2001)), while within-population genetic diversity is kept at high levels (e.g. the short leaved cedar *Cedrus brevifolia* (Eliades et al., 2011) and see Andr n (1994) for a review).

The climate cycles of the Pleistocene have reshuffled species geographical distributions and genetic diversity patterns (Hewitt 1999; Petit et al., 2003). The imprint left on their current genetic diversity pattern is variable and depends greatly on their life history traits and their ecological preference. Species with ecological niches translating to mid-elevation (thus isolated or patchy) distributions on mountains during the Holocene (the interglacial period of today) were probably widespread at lower elevation repeatedly during the many glacial periods of the Pleistocene (Feurdean et al., 2012), offering several opportunities for gene flow to occur unrestrictedly. In such species, current day patchiness and isolation may not indicate strong genetic differentiation and, a fortiori, the onset of speciation events (see Futuyma (2010) for factors constraining genetic divergence).

Pinus nigra Arnold, the European black pine, belongs to the section *Pinus* and the subgenus *Pinus* of the Pinaceae family (Eckert & Hall 2006). It is characterized by a wide, discontinuous distribution area, which spreads from isolated occurrences in North Africa to the Northern Mediterranean and eastwards to the Black Sea and Crimea (Gausсен et al., 1964; Barb ro et al., 1998; Isajev et al., 2004). The European black pine can also grow and adapt to several different soil types and topographic conditions supporting a wide variety of climates across its geographic range. It grows at altitudes ranging from sea level to two thousand meters, most commonly between 800 and 1,500 m. The European black pine is one of the most economically important native conifers in southern and central Europe and one of the most used species in European reforestation programs since as early as the 19th century and throughout the 20th century (Isajev et al., 2004). Several geographic subspecies are described but its taxonomy is still considered as unresolved (Rubio-Moraga et al., 2012).

Pinus nigra has a large, but highly fragmented geographic distribution area (Figure 1). Yet, what is known of its genetic diversity is that of a typical temperate forest tree species, with high within- and low among-population genetic diversity (Fady & Conord 2010). The genetic structure data of the European black pine contradict what is expected from a habitat fragmentation perspective, where patchy distributions equate to high ecological and evolutionary divergence (Young et al., 2006). One of the favoured explanation for this *a priori* contradiction is a historically high gene flow (dispersal events over millennia of colonization) over long distances (Kremer et al., 2012). In forest trees, long generation time and late sexual maturity increase the effect of gene flow (Austerlitz et al., 2000). The population genetic pattern of the *Pinus nigra* biogeographical islands of today (particularly at the southern and western edges of the species) should thus be the result of relatively recent fragmentation.

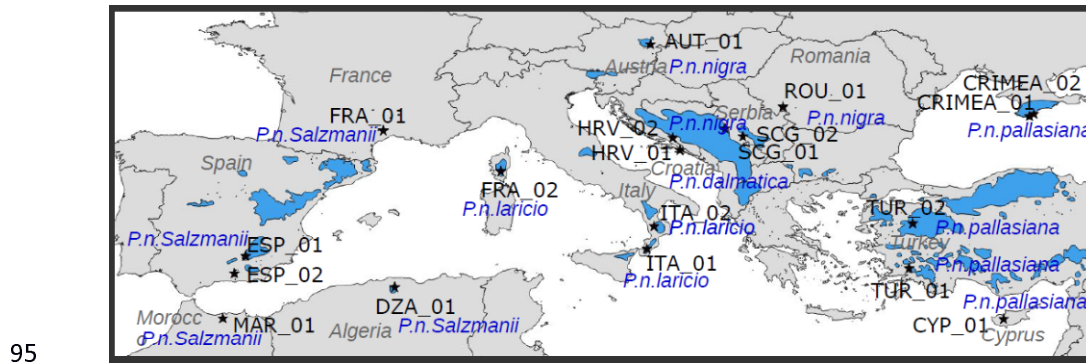


Figure 1: Native geographic distribution area of *Pinus nigra* (in blue, from Isajev et al., 2004) and location of sampled populations with their code names (black stars) and subspecies name according to the nomenclature of Catalogue of life (<http://www.catalogueoflife.org/>).

100 However, widely contradicting evolutionary scenarios have been proposed for explaining the genetic diversity and structure of the European black pine, from very recent Holocene or Quaternary divergence (Rafii & Dodd 2007) to pre-Pleistocene divergence (Naydenov et al., 2016; 2017).

105 The goal of this study is to test the effects of historical fragmentation on the genetic diversity and differentiation of the European black pine and to resolve its biogeographic history. For this, we describe and model its spatial genetic structure and we test whether its large and patchy distribution results from recent Holocene or earlier Pleistocene events using population genetic data and realistic demographic, timed scenarios. We use a set of different genetic markers, both neutral and putatively adaptive, and both bi-parentally and uni-parentally (cytoplasmic) inherited. Although population genetic studies traditionally use selectively neutral genetic makers, loci influenced by selection are also particularly helpful for assessing relative differences in levels of gene flow, especially in high gene flow species (Guichoux et al., 2013).

110 We sampled natural populations across the entire range of the species. We discuss why our results differ from, or concur with, the few previous molecular studies carried out at a similar scale on this species (Nikolić & Tucić 1983; Naydenov et al., 2016; 2017; Rafii & Dodd 2007). We also considered how habitat suitability might have affected demography by correlating climate variables at different Pleistocene ages with genetic diversity estimates under the assumption that harsher climate conditions and thus declining habitat suitability, would produce demographic contractions with observable signatures in the genetic data (Conord et al., 2012).

2. Materials and Methods

120 2.1- Sampling and DNA extraction

125 Needles were collected from 19 different locations across the Mediterranean Basin and southern Europe where black pine is naturally occurring (Table 1). Populations were represented by 12 individuals each, with the exception of HRV-01 for which 16 individuals were collected. The 19 populations selected cover the full extent of the geographic distribution of *Pinus nigra* as well as its taxonomic diversity (Table 1). DNA was extracted from needles using the DNeasy 96 Plant Kit (QIAGEN, Germany) at the INRA molecular biology laboratory of Avignon, France. Microsatellites data analyses, both chloroplast (cpSSRs) and nuclear (nSSRs), were carried out on the 19 selected populations, while gene sequencing was performed on 18 populations

Population code*	Population ID	Subspecies**	Country	Samples origin	Latitude	Longitude
ITA-01	Aspromonte	P.n. laricio	Italy	Common garden	38°14' N	16°00' E
TUR-01	Mugla	P.n. pallasiana	Turkey	Common garden	37°20' N	28°24' E
HRV-01	Peljesac	P.n. dalmatica	Croatia	Natural population	42°52'07" N	17°33'03" E
DZA-01	Djurdjura	P.n. salzmannii	Algeria	Natural population	36°27' N	4°06' E
CYP-01	Cyprus	P.n. pallasiana	Cyprus	Natural population	34°57' N	32°50' E
FRA-01	St Guilhem	P.n. salzmannii	France	Natural population	43°46' N	3°34' E
SCG-01	Studenica	P.n. nigra	Serbia	Common garden	43°29' N	20°32' E
FRA-02	Valdoniello	P.n. laricio	France	Common garden	41°51' N	9°06' E
AUT-01	Skie 07	P.n. nigra	Austria	Natural population	47°46'00" N	16°11'00" E
SCG-02	Skie 12	P.n. nigra	Serbia	Natural population	43°49'39" N	19°35'22" E
HRV-02	Skie 14	P.n. dalmatica	Croatia	Natural population	43°26'00" N	17°13'00" E
ITA-02	Skie 19	P.n. laricio	Italy	Natural population	39°18'08" N	16°20'22" E
ESP-01	Skie 33	P.n. salzmannii	Spain	Natural population	37°55'00" N	02°55'00" W
TUR-02	Skie 46	P.n. pallasiana	Turkey	Natural population	39°25'50" N	28°34'10" E
ROU-01	Skie 53	P.n. nigra	Romania	Natural population	44°52'57" N	22°25'40" E
CRIMEA-01	Skie 54	P.n. pallasiana	Ukraine / Russia	Natural population	44°25'39" N	34°03'05" E
ESP-02	72	P.n. salzmannii	Spain	Natural population	37°5'35" N	3°27'33" W
MAR-01	TAT	P.n. salzmannii	Morocco	Natural population	35°01'02" N	4°00'36" W
CRIMEA-02	CRIM	P.n. pallasiana	Ukraine / Russia	Common garden	44°33' N	34°17' E

130 *Table 1: Description of the sampled Pinus nigra populations*

* Population codes are based on the ISO 3166-1 standard, which identify countries and territories using a three-letter combination. Given the current geopolitical tensions in Crimea, we decided to code populations from there not using the ISO code (UKR for Ukraine or RUS for the Russian Federation).

135 ** The nomenclature follows Catalogue of life (<http://www.catalogueoflife.org/>) which recognizes five subspecies: *Pinus nigra* subsp. *salzmannii* (Dunal) Franco, *Pinus nigra* subsp. *laricio* (Poir.) Maire, *Pinus nigra* subsp. *pallasiana* (Lamb.) Holmboe, *Pinus nigra* subsp. *nigra* J.F. Arnold and *Pinus nigra* subsp. *dalmatica* (Vis.) Franco.

140 2.2- Genotyping and sequencing

Four paternally-inherited cpSSRs, previously identified as polymorphic in black pine, were selected for this study (Appendix S1, Table S1.1 in Supporting Information, Vendramin et al., 1996). The

fourteen bi-parentally inherited nSSRs used were those characterized for black pine by Giovannelli et al. (2017) (Table S1.2 in Appendix S1). The fourteen putatively adaptive nuclear genes (called candidate genes hereafter) selected for this study were those that could be transferred from *P. taeda* (Mosca et al., 2012) in a preliminary test (Table S1.3 in Appendix S1). Finally, we also used four organelle genes that can reveal sub-species level differences in widely distributed and taxonomically complex species (Kress & Erickson 2007, Table S1.4 in Appendix S1).

2.3- Data analysis

2.3.1- Genetic diversity and differentiation estimates: cpSSR and nSSR

We used MICRO-CHECKER (Oosterhout et al., 2004) to estimate the presence of null alleles among the 14 selected nSSRs performing 1000 randomizations. We then used ML-NullFreq (Kalinowski & Taper, 2006) to calculate the frequencies of the null alleles. This two-step method minimizes the false negative rate of null allele detection (Dąbrowski et al., 2014). When the presence of a null allele was detected, genotypes were corrected using MICRO-CHECKER. GenAIEx v6.5 (Peakall & Smouse, 2012) was used to assess genetic diversity as the effective number of alleles (A), and observed (H_O) and expected (H_E) heterozygosity. Genetic differentiation between populations was estimated using G_{ST} (Nei 1973), the “standardized” measures G'_{ST} (Hedrick 2005) and Jost's D (Jost 2008) following the recommendations for correction of sampling bias of Meirmans & Hedrick (2011). FSTAT V2.9.3.2 (Goudet 2001) was used to calculate rarefied allelic richness. Genepop v4.2.1 was used to test for genotypic disequilibrium among the 14 nSSR loci using likelihood ratio statistics (Rousset, 2008) and default Markov chain parameters.

2.3.2- Genetic diversity and differentiation estimates: Genes

PHASE v.2.1.1 included in DnaSP v5 (Librado & Rozas, 2009) was used to infer haplotypes. Linkage disequilibrium between pair of SNPs within each gene and within each population was inferred from the exact test of linkage disequilibrium (Raymond & Rousset, 1995) available in Arlequin v3.5.2.2 (Excoffier & Lischer, 2010). The effective number of alleles (A), observed (H_O) and expected (H_E) heterozygosity and F_{ST} were calculated for each population also using Arlequin v3.5.2.2.

2.3.3- Phylogeographic patterns

SPAGeDi (Hardy & Vekemans, 2002) was used to calculate and compare F_{ST} and R_{ST} for nSSRs, and F_{ST} and N_{ST} for cpSSR haplotypes and genes. R_{ST} and N_{ST} are analogues of F_{ST} but take into account the similarities between alleles (Goldstein & Pollock, 1997, Pons & Petit, 1996). The tests were performed globally and within nineteen (eighteen for genes) classes of geographic distances equalling the number of populations analysed. For adaptive genes, the analysis was performed considering each gene separately whereas for nSSR and cpSSR the analysis considered all loci together. The presence of a spatial genetic structure was tested by permuting locations (10,000 permutations). The presence of phylogeographic signals was tested by permuting (10,000) microsatellites allele sizes for nSSRs and by permuting rows and columns of distance matrices between alleles for cpSSRs and genes (Hardy et al., 2003; Pons & Petit 1996).

2.3.4- Range wide structure

To test for the presence of population genetic structure without *a priori* on the geographic origin of the individuals, we performed a Bayesian clustering approach using the software STRUCTURE v2.3 (Pritchard et al., 2000; Falush et al., 2003). An admixture model for which individuals may have mixed ancestry and a correlated allele frequency model in which frequencies in the different populations are likely to be similar (due to migration or shared ancestry) were considered. The analysis was performed including together nSSRs, cpSSR and genes. Five independent runs for each K value ranging from 1 to 20 were performed after a burn-in period of 5×10^5 steps followed by 1×10^6 Markov chain Monte Carlo replicates. The most likely number of clusters (K) and the rate of change

190 of L(K) between successive K values were estimated following Evanno et al. (2005) using the web application StructureHarvester (Earl & von Holdt, 2012). Results from five runs for the most likely K were averaged using the software CLUMPP (Jakobsson & Rosenberg, 2007) with Greedy algorithm and 1×10^4 iterations and visualized using the DISTRUCT software (Rosenberg, 2004).

2.3.5- Demographic inference

195 DIYABC v2.1.0 (Cornuet et al., 2014) was used to infer the species' demographic history within an approximate Bayesian computation (ABC) framework. Among the 19 sampled populations of *P. nigra*, only a subset was used for the demographic inference. The selection of the populations was performed based on the results of STRUCTURE, which identified seven evolutionary lineages. The distribution of the seven genetic lineages was strongly structured: nine populations were homogeneous while the other ten were strongly admixed, suggesting the presence of past or continuous gene flow.
200 Since the latter is not modelled by DIYABC, we focused on the past history reconstruction of both divergence and admixture events. To simplify the historical reconstruction, we first focused on the divergence between the seven lineages.

For this first analysis, seven *P. nigra* populations (12 individuals each) were selected which best represented the identified lineages and contained the lowest level (between 9% and 19%) of admixed individuals: ITA-01 (*P. n. laricio*, Italy), HRV-01 (*P. n. dalmatica*, Croatia), DZA-01 (*P. n. salzmannii*, Algeria), CYP-01 (*P. n. pallasiana*, Cyprus), FRA-01 (*P.n. salzmannii*, France), SCG-02 (*P.n. nigra*, Serbia) and CRIMEA-01 (*P.n. pallasiana*, Crimea) (Table 1). The choice of the tested scenarios is described in details in Table S2.1 of Appendix S2 and shown in Figure 2.
205

In a second step, the historical reconstruction focused on the admixed populations. Rather than inferring past demographic parameters from a single tree composed of seven branches and later events of admixtures, we ran separately five different scenarios of admixture events which best explained current population genetic composition. The details of the DIYABC analysis (prior distributions, evaluation of the simulations, selection of the most likely scenario, estimation of the demographic parameters, estimation of the bias and the precision of parameters estimation) are given in Table S2.1 and Figure S2.2 of Appendix S2.
210
215

All scenario analyses were performed using the R environment (R Core Team, 2015).

2.3.6- Correlations between Genetic Diversity and Environmental features

We computed correlations to test whether environmental characteristics could influence neutral genetic diversity patterns through demographic changes. Latitude, longitude and 19 standard bioclimatic variables were downloaded from the WorldClim database (version 1.4, Hijmans et al., 2005) in January 2016 for the present time, the Mid Holocene, the Last Glacial Maximum and the last inter-glacial (Table S3.1 and S3.2 in Appendix S3). We also added three custom-made variables representative of the population isolation (Table S3.1 and S3.2 in Appendix S3). We conducted all analyses in Rstudio (RStudio Team version 1.0.143, 2016).
220

225

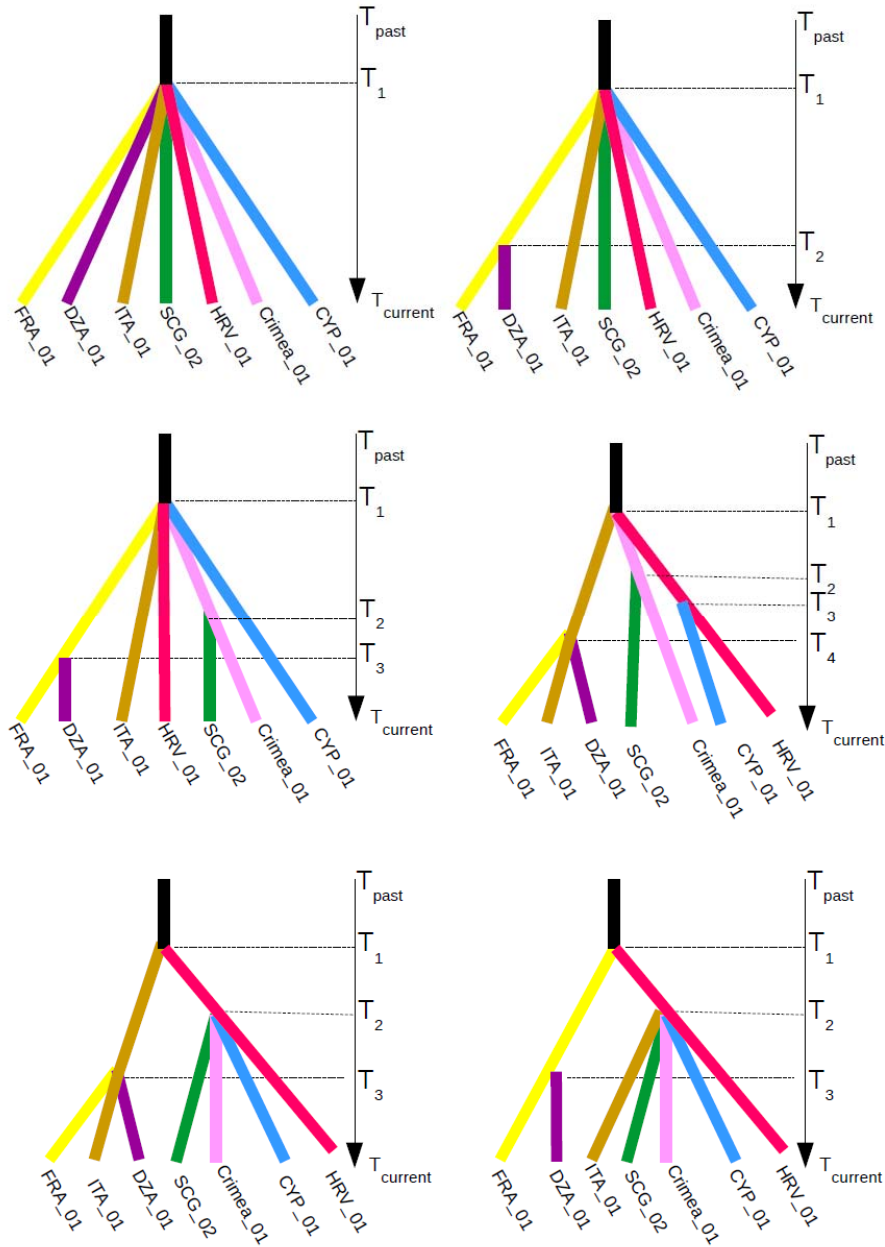


Figure 2: Demographic scenarios tested to infer past range-wide divergence events between seven populations of *Pinus nigra*.

230

3. Results

3.1- Within population diversity

235 At nSSR, no significant linkage disequilibrium was detected among loci after the application of the
Bonferroni correction at the $\alpha = 0.05$ confidence level. Significant tests for the presence of null alleles
were scattered among loci and populations without a clear mark indicating that a locus or an entire
population should be excluded from the analysis (Table S1.5 in Appendix S1). At candidate genes,
240 173 Single Nucleotide Polymorphisms (SNPs) were detected and significant within-population linkage
disequilibrium was found for each gene (Table S1.6 Appendix S1).

All within-population diversity results are described in Table S1.7 of Appendix S1. Organelle DNA
gene did not show any diversity at all in any of the preliminary samples we tested. We considered
them as monomorphic in all populations throughout our dataset. For candidate genes, the genetic
diversity at each locus averaged over eighteen populations varied between 2 and 40 haplotypes (Table
245 S1.6 in Appendix S1). When SSR genetic diversity was estimated per population averaging all loci
(Table S1.7 in Appendix S1), gene diversity H_E was high both at nuclear genome (between 0.53 and
0.75) and cp genome (between 0.39 and 0.69). A longitudinal cline was observed at both nSSR and
candidate genes, with H_E and N_A values increasing from west to east (Pearson correlation between
0.48 and 0.54, P .value<0.05, Figure S1.1 in Appendix S1).

250 3.2- Among population structure

Genetic differentiation among populations was significant for all types of genetic markers with
strongest values at cpSSR whatever the indices used: Nei's G_{ST} , Hedrick's G'_{ST} or the Jost's D (Table
2). Nei's G_{ST} was 0.127, 0.064 and 0.11 for cpSSR, nSSR and candidate genes, respectively. Results
from SPAGeDi (Hardy & Vekemans, 2002) showed the presence of an isolation-by-distance pattern at
255 nSSRs and five out of fourteen candidate genes as shown by the positive and significant regression
slope of pairwise F_{ST} on geographical distances (Figure S4.1, S4.2 and Table S4.1 in Appendix S4).
However, the linear regression slopes of pairwise N_{ST} and R_{ST} on geographical distances were never
significant for any markers, indicating that allelic relatedness did not increase with distance, and thus
indicating a lack of phylogeographic signal among populations (Figure S4.1, S4.2 and Table S4.1 in
260 Appendix S4).

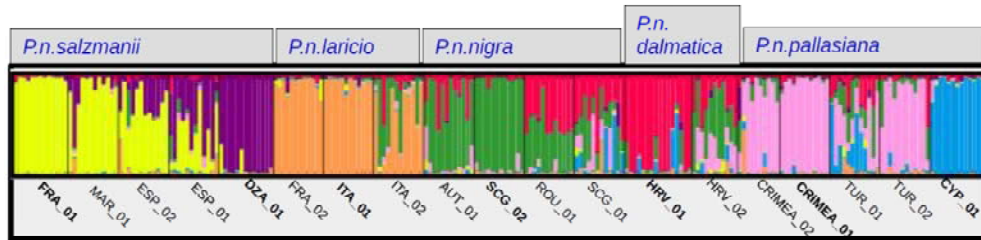
	Gst	G'st	D
nSSR	0.064	0.262	0.209
cpSSR	0.127	0.372	0.276
Candidate genes	0.108	-	-

Table 2: Overall estimates of genetic differentiation (Nei's (1973) G_{ST} , Hedrick's (2005) G'_{ST} and Jost's (2008) D) at 4 cpSSRs, 14 nSSRs (19 populations) and 14 candidate genes (18 populations).

265 3.3- Range wide population structure

Results derived from STRUCTURE using combined nSSR, cpSSR and nuclear gene data, showed that
the most likely number of clusters (K) was 7 (Figure S4.3 and S4.4 in Appendix S4). The first cluster
included populations from Algeria (DZA-01) and Morocco (MAR-01) and the second one the French
(FRA-01) population. Populations (ESP-01, ESP-02) from Spain were admixed between the two. The
270 third group included populations from Italy (ITA-01) and France (Corsica, FRA-02) and a somewhat
admixed Italian population (ITA-02). The Serbian population (SCG-02) and Croatian (HRV-01)
populations constituted two different and separate lineages and populations AUT-01 from Austria and
ROU-01 from Romania were admixed between the two. The population from Cyprus (CYP-01)

275 constituted a highly differentiated lineage. Populations from Crimea (CRIMEA-01 and CRIMEA-02) and Turkey (TUR-02) constituted the final lineage. Turkish population (TUR-01) was admixed between these last two groups while populations from Serbia (SCG-01) and Croatia (HRV-02) were highly admixed with multiple contributions from different groups (Figure 3).



280 *Figure 3: Barplots of ancestry proportions for genetic clusters averaged over 5 runs from $K = 2$ to $K = 7$. Each individual is represented by a vertical bar divided into colour segments representing the gene pools identified by the STRUCTURE analysis. Bold types indicate the seven most homogeneous populations (lineages) used in the ABC analysis.*

285 **3.4- Demographic inference**

3.4.1- Divergence patterns

The evaluations of the ABC simulations are given in the Figure S2.3 and Table S2.2 in Appendix S2, for both the PCA and a test of rank. Priors represented well the observed summary statistics and empirical data were located within the 95 % of the distribution of the simulated data. The most probable scenario of divergence was scenario 1 with a probability of 0.80 (credible interval between 0.7615 and 0.8311) (Figure S2.4 in Appendix S2). According to this scenario, all populations derived independently from a single common ancestor. The posterior error rate (also called “posterior predictive error”), given as a proportion of wrongly identified scenarios over the 1000 test datasets for both the direct and the logistic approaches, was equal to 0.291 (Table S2.3 in Appendix S2). Estimates of the original parameters (demographic size N , divergence time t , mutation rate μ) are given in Table 3.

290 The median for the mutation rate was 0.00052 for nSSR, 0.00019 for cpSSR, $8.9 \cdot 10^{-7}$ for nuclear genes and $1 \cdot 10^{-12}$ for chloroplast DNA sequences. The latter corresponds to the maximum limit of the prior. The absence of polymorphism did not allow estimation of the mutation rate. Median divergence time among the seven lineages was estimated to be 813 generations ago, with a 95% credible interval of 321 – 2910 generations (Table 3). The divergence between the seven lineages occurred approximately 12,195 (4,815 – 43,650) years before present for a generation time fixed at 15 years (i.e. the onset of Holocene) and 24,390 (9,630 – 87,300) years before present for a generation time fixed at 30 years (i.e. thus at the time of Late Glacial Maximum).

305

	Mean	median	mode	q025	q050	q250	q750	q950	q975
Current demographic size N									
HRV-01	4260	4050	3780	1990	2280	3230	5050	6970	7810
ITA-01	5260	5130	5010	2690	3040	4190	6170	8000	8700
SCG-01	7230	7270	7290	4900	5290	6480	8010	9080	9400
CYP-01	4290	4080	3790	2050	2330	3260	5080	7070	7950
CRIMEA-01	5420	5310	5260	2940	3290	4440	6290	7980	8590
FRA-01	3760	3500	3390	1650	1880	2740	4500	6520	7540
DZA-01	3310	3060	2520	1380	1580	2350	3940	6040	6940
Ancestral demographic size N	7820	8170	8600	3640	4870	7180	8840	9560	9710
Divergence time. t in generation	1000	813	771	321	373	588	1150	2190	2910
mutation rate μ									
nSSR	0.00064	0.00052	0.00039	0.00026	0.00029	0.0004	0.0007	0.00123	0.00171
cpSSR	0.00022	0.00019	0.00017	6.8E-05	8.4E-05	0.00014	0.00026	0.00042	0.000504
candidate genes	1.2E-06	8.9E-07	6.3E-07	1E-08	6.4E-08	5E-07	1.5E-06	3.1E-06	0.00000375
cp barcode	1.9E-09	1E-12	1E-12	1E-12	1E-12	1E-12	1.9E-09	9.6E-09	1.37E-08
mutation rate's parameter									
NSSR (geometric distribution)	0.53	0.517	0.34	0.118	0.139	0.308	0.756	0.947	0.97
cpSSR (geometric distribution)	0.62	0.646	1	0.141	0.177	0.42	0.836	0.98	1
candidate genes (HKY)	3.35	1.01	0.0544	0.0585	0.0684	0.232	4.54	14.7	17
cp barcode (HKY)	3.07	0.887	0.0524	0.0557	0.0638	0.198	4.02	13.9	16.6

Table 3: Estimates of the demographic parameters from their posterior distribution (mean, median, mode and quantiles)

310 Median effective population sizes for scenario 1 were 8,170 for the ancestral population, and between
315 3,060 (Algeria) and 7,270 (Serbia) for current populations. When comparing the mode of the ratio
between current and ancestral population sizes, the ratio $N_{\text{current}}/N_{\text{past}}$ was systematically lower than 1
(between 0.12 and 0.75) (Figure 4) and significantly so for six populations at credible interval of 90%
according to the method proposed by Barthe et al. (2016) (Table S2.4 in Appendix S2). Those six
populations underwent a contraction at the same time as the split between populations. Only
population SCG-02 from Serbia displayed demographic stability over time.

320 Results from the accuracy test of parameters estimation (as measured by mean relative bias (MRB),
relative root mean square (RMSE) and factor 2) and precision (as shown by coverage values)
displayed, globally, reasonable values (Table S2.5 in Appendix S2). The mean relative bias was
generally smaller than 1, while factor 2 values ranged from small to moderate according to the
estimated parameters. The width of the 50% - 95% credible interval was small, showing that the
parameters were reasonably well estimated.

325 Summary statistics computed after having simulated new data sets from the posterior distribution of
parameters obtained under scenario 1 fitted well with the observed summary statistics (Table S2.6 and
Figure 2.5 in Appendix S2). We found that none of the eight summary statistics had low tail
probability values when applying the model checking option to the scenario 1. The most probable
scenario remained the same (S1) with a probability of 0.999 (credible interval between 0.9998 and
1.0000) when it was compared to a scenario allowing demographic resizing along the branches after
divergence from the common ancestor (Figure S2.6 in Appendix S2).

330

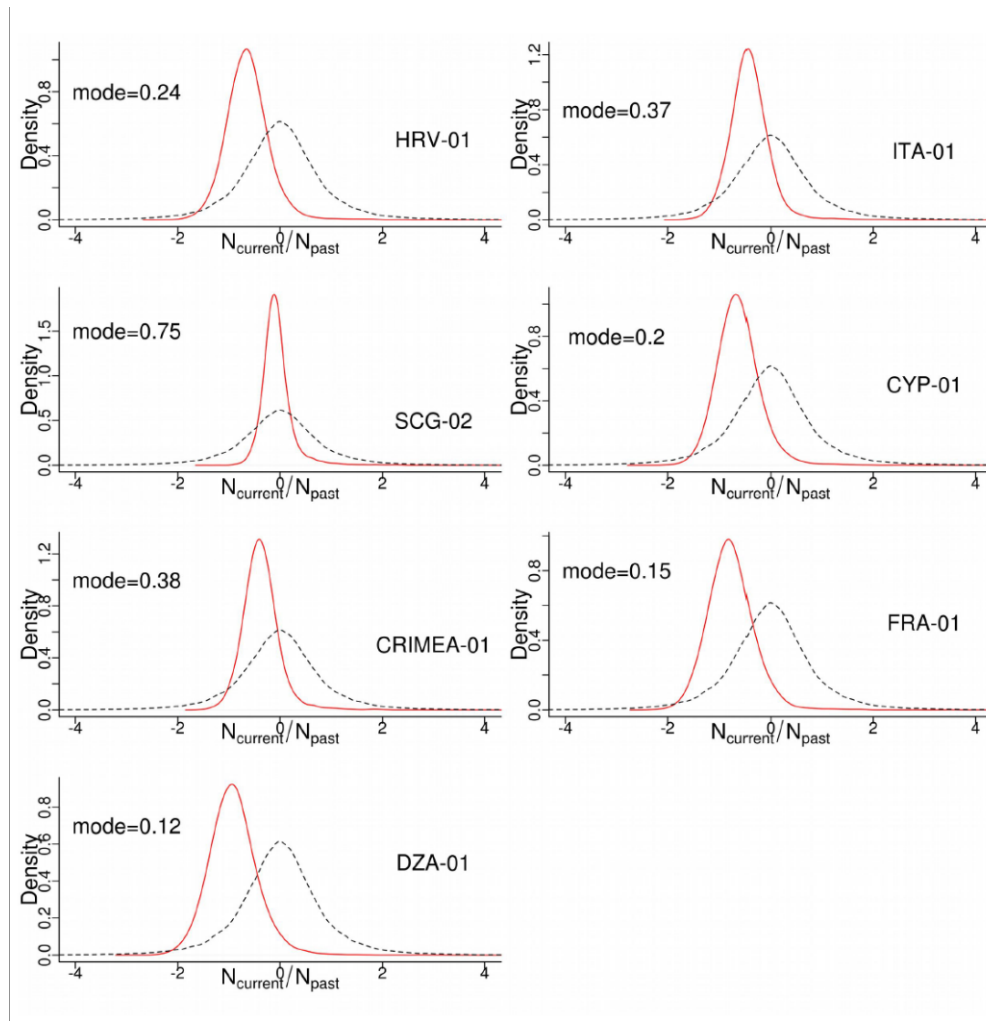


Figure 4: comparison of the mode of the ratio between current and ancestral population sizes ($N_{current}/N_{past}$) for seven populations. In black the prior distribution and in red the posterior distribution. This ratio is systematically lower than 1, indicating population contraction.

335 3.4.2- Admixture patterns

The PCA and the test of rank are given in Table S2.7 and Figure S2.6 in Appendix S2. Median time of divergence between all five pairs of populations was between 304 and 1520 generations (Table 4 and Table S2.8 in Appendix S2 for all parameter estimates) overlapping the estimates obtained from the seven populations taken together (Table 3, median was 813 generations). Median time of admixture was between 130 and 503 generations (Table 4) with a confidence interval between 28.9 and 1940 generations. Assuming a generation time between 15 and 30 years, the admixture events between the pairs of lineages occurred between 448 and 58,200 years before present, from the Late Glacial Maximum to after the onset of Holocene. The proportion of test data sets for which the point estimate was at least half and at most twice the true value (factor 2) was rather high (mode of factor 2 > 0.70 for 44 parameters) (Table S2.9 in Appendix S2).

Summary statistics computed after having simulated new data sets from the posterior distribution of parameters fitted well with the observed summary statistics (Table S2.10 and Figure S2.8 in Appendix S2). We found that none of the seven summary statistics had low tail probability values.

Country	Sub-species	Parameter		mean	median	mode	q025	q050	q250	q750	q950	q975
Croatia/ Serbia/ Romania	<i>P.n.dalmatica</i> / <i>P.n.nigra</i> / <i>P.n.nigra</i> /	Merging time	HRV-01+SCG-02 → ROU-01	485	391	261	95.1	124	251	606	1160	1420
		admixture rate	From HRV-01 to ROU-01	0.29	0.257	0.224	0.0379	0.0633	0.167	0.376	0.64	0.735
		Divergence time	Ancestral → HRV-01+SCG-02	687	481	355	146	175	314	769	1790	2550
Italy/ Serbia/ Italy	<i>P.n.laricio</i> / <i>P.n.nigra</i> / <i>P.n.laricio</i>	Merging time	ITA-01+ SCG-02 → ITA-02	137	105	53.5	26.8	33.4	65.8	168	343	449
		admixture rate	From ITA-01 to ITA-02	0.512	0.513	0.504	0.116	0.177	0.381	0.644	0.839	0.895
		Divergence time	Ancestral → ITA-01+ SCG-02	741	530	293	152	187	337	842	1970	2810
France/ Algeria Spain	<i>P.n.salzmanni</i> / <i>P.n.salzmanni</i> / <i>P.n.salzmanni</i> /	Merging time	FRA-01+DZA-01 → ESP-01	359	285	166	55.5	77.8	176	455	877	1070
		admixture rate	From DZA-01 to ESP-01	0.547	0.551	0.471	0.128	0.196	0.418	0.686	0.872	0.921
		Divergence time	Ancestral → FRA-01+DZA-01	1540	1240	895	379	465	839	1890	3670	4690
Serbia/ Crimea/ Croatia	<i>P.n.nigra</i> / <i>P.n.pallasiana</i> / <i>P.n.dalmatica</i>	Merging time	SCG-02 + CRIMEA-01 → HRV-02	171	130	100	28.9	38.9	80.7	208	434	564
		admixture rate	From SCG-02 to HRV-02	0.622	0.64	0.634	0.197	0.285	0.513	0.751	0.895	0.934
		Divergence time	Ancestral → SCG-02 + CRIMEA-01	425	304	223	89.5	109	201	481	1050	1470
Cyprus/ Crimea/ Turkey	<i>P.n.pallasiana</i> / <i>P.n.pallasiana</i> / <i>P.n.pallasiana</i>	Merging time	CYP-01 + CRIMEA-01 → TUR-01	490	402	269	90.2	122	257	614	1140	1440
		admixture rate	from CYP to TUR-01	0.335	0.308	0.254	0.0561	0.0882	0.21	0.431	0.679	0.767
		Divergence time	Ancestral → CYP-01 + CRIMEA-01	1870	1520	1200	475	582	1030	2270	4380	5560

Table 4: Estimates of the demographic parameters from their posterior distribution (mean, median, mode and quantiles) in the three population models with admixture

3.4.3- Correlations between genetic diversity estimates and environmental variables

355 Partial Pearson correlations were not significant. Pearson correlations with a false discovery rate
(FDR) lower than 0.1 (i.e. 10% chance that the retained relationships are false positives) were
observed between N_A and H_E at candidate genes and several temperature variables of the Last Glacial
Maximum (Table S3.3 in Appendix S3). In addition we observed a FDR <10% between the ratio of
360 demographic size ($N_{\text{current}}/N_{\text{past}}$) and the bioclimatic variable bio10 (mean temperature of the warmest
quarter) at Present, Mid Holocene and Last Inter-Glacial. The rank of the explicative environmental
variables obtained from the random analyses and the conditional inference tree obtained from the five
most important environmental variables (Figure S3.1 of Appendix S3) confirmed the importance of
the two LGM bioclimatic variables bio4 (temperature seasonality) and bio10 for candidate genes. The
smaller the minimum temperature of coldest month at LGM, the higher was the number of nuclear
365 gene alleles. In the same way, the smaller the temperature seasonality within population, the smaller
was the expected heterozygosity (H_E).

4. Discussion and conclusions

Our Bayesian clustering and demographic scenario testing study demonstrates that *Pinus nigra* is
composed of seven genetic lineages dating from relatively recent Holocene divergence. A simple,
370 seven-toothed rake-like demographic scenario best explains the biogeographic distribution of present-
day black pine populations. The seven lineages diverged from their most recent common ancestor at a
very recent time, estimated between the Last Glacial Maximum and the onset of the Holocene.

This scenario agrees with the results of Rafii & Dodd (2007) who also estimated the fragmentation of
European black pine lineages to be recent. Focusing on Western Europe, they were able to identify
375 five barriers to gene flow including, similarly to ours, between the Alps and the Calabria - Corsica
group, between Corsica and Southern France and between Southern Spain and the Pyrenees. However,
our results strongly depart from those of Naydenov et al. (2016, 2017) who identified three genetic
groups from three different geographical areas: Western Mediterranean, Balkan Peninsula and Eastern
Mediterranean. They estimated their most recent common ancestor to be older than 10 million years
380 and dated the most recent splits between groups in the late Pliocene. These patterns and dates were
obtained using cpDNA sequence and cpSSR length polymorphism data, assuming an average mutation
rate per generation of 5.6×10^{-5} . This low mutation rate, identical for both length polymorphism and
sequence variation in cpDNA, may be the main reason why our results are so different. As our study
uses a suite of different molecular markers and because an old Pliocene divergence time would
385 certainly have left a mutational signature in organelle DNA genes, we are confident that Late Glacial
Maximum and/or Holocene demographic events are the most likely explanations for the genetic
patterns we observed.

No signature of demographic events older than the last Pleistocene glacial cycle can be found in our
data. Environmental correlations with climate data demonstrate the importance of LGM temperature
390 on the genetic diversity and structure of black pine. However, proofs of the presence of black pine
ancestors throughout Europe date back to the lower Cretaceous and to the Neogene, between 23 and
2.6 million years ago (Gaussen, 1949). The molecular and fossil calibrated phylogeny of Eckert &
Hall (2006) dates the origin of black pine at the Miocene-Pliocene boundary. Following its migration
from Polar to Central and Southern European locations during the global cooling of the late Tertiary,
395 black pine was then often found throughout the Pleistocene in charcoal and fossil records in the
Mediterranean. From the end of the Pliocene (2.6 million years ago) onwards and during the
Pleistocene, it is associated with the sub-Mediterranean flora of Europe (Vernet et al., 1983). *P. nigra*
forests played an important ecological role during the Quaternary glacial and interglacial climatic
fluctuations in the Western Mediterranean region (Vernet et al., 1983).

400 Fossil macro-remains indicate that between the Late Pleistocene and the Holocene, *P. nigra* forests
had a large distribution (altitude and latitude) in the north-western Mediterranean Basin (e.g. García-
Amorena et al., 2011 for the Iberian peninsula). Although *Pinus nigra* is a highland pine, fossil and

subfossil remains suggest that it also grew at very low elevation, in coastal areas during cold and dry periods (Postigo-Mijarra et al., 2010). During the warmer, inter-glacial periods of the Pleistocene, it colonized more continental, higher altitudes, as is the case for its current Holocene distribution in the supra-Mediterranean and medio-European vegetation belts (Isajev et al., 2004). It is thus likely that, whatever genetic signature left from fragmentation during the warm intervals of the Pleistocene, it was erased by downward migration during the longer cold climate episodes. Vegetation turnover estimates using fossil records suggest that mid-elevations were the most sensitive altitudinal belts to climate change during the late-glacial and early Holocene (Feurdean et al., 2012).

Human impact is known to have played a role in the past dynamics of *P. nigra* (Vernet, 1986). The decrease of the *Pinus nigra subsp. salzmannii* from the Iron Age onwards and the concomitant development of *Quercus ilex* and *Pinus halepensis*, for example, may be related to fire events, logging and agro-pastoral activities (Rodrigo et al., 2004). The effective size of today's black pine populations is generally significantly smaller than that of their ancestral population. As resizing after the emergence of current lineages was not sustained by our data, the most likely explanation for this smaller effective population size is not an effect of human impact, rather that of a contraction at the time of lineage splitting.

Admixture among the seven lineages we identified, was found to be frequent in natural populations of black pine, suggesting recent gene flow despite habitat fragmentation. There was no signal of a phylogeographic structure, only that of a weak isolation by distance, confirming the hypothesis of recent differentiation and emergence of distinct lineages. This pattern is reminiscent of that of *P. sylvestris*, a European pine with broadly similar ecological requirements as black pine (Robledo-Arnuncio et al., 2005; Pyhäjärvi et al., 2007; Tóth et al., 2017).

The moderately high within-population genetic diversity of black pine is between that of low elevation and high elevation Mediterranean pines (Robledo-Arnuncio et al., 2005; Rafii & Dodd 2007; Fady & Conord 2010). The highest genetic diversity within populations was found in populations originating from the Balkans and Turkey, the geographic area where the most extensive forests of *P. nigra* are found today. Within population genetic diversity shows an east-west decreasing trend, indicating that eastern Mediterranean black pine forests probably found more favourable habitats at the time of lineage splitting (Conord et al., 2012).

All but one populations corresponding to one of the seven lineages identified are located on islands, at isolated or rear-edge locations. It is likely that these locations correspond to glacial refugia. Most of them appear as refugia in the synthesis of Médail & Diadema (2009). To this list of 52 putative refugia of importance for Mediterranean plant species, our study adds the southern Serbian mountains and Crimea.

Finally, the seven lineages we identified can help resolve the debated taxonomy of the European black pine (Rubio-Moraga et al., 2012). Both widely and only regionally accepted subspecies or variety names can identify these lineages (Nyman, 1879; Fukarek, 1958; Debazac, 1964; Vidaković, 1974; Farjon, 2010). The westernmost, North African origin lineage corresponds clearly to the taxonomic entity recognized as *Pinus nigra subsp. mauretunica*. The second westernmost European lineage located in continental France, corresponds to the taxon *Pinus nigra subsp. salzmannii*. These two taxa are often grouped together in several nomenclatures. Moving eastward, the third lineage is located in Corsica (France) and Calabria (Italy) and corresponds to the taxon *Pinus nigra subsp. laricio*. It is worth noting that *Pinus nigra subsp. laricio* from Calabria and from Corsica are often distinguished in the forestry literature (e.g. Roman-Amat & Arbez, 1986), which we could not do here despite our use of uni- and bi-parentally inherited, neutral and putatively selected markers. The fourth lineage corresponds to the taxon *Pinus nigra subsp. dalmatica* on the Dalmatian coast in Croatia. The fifth lineage is found in Central Europe (Serbia) and corresponds to the widely distributed taxon *Pinus nigra subsp. nigra*. The sixth lineage corresponds to the widespread *Pinus nigra subsp. pallasiana* and originates from the Crimean peninsula. Lastly, the easternmost seventh lineage is located in Cyprus and corresponds to a taxon generally included in *Pinus nigra subsp. pallasiana* but sometimes

455 recognized as *Pinus nigra subsp. caramanica*. A list of synonyms of *Pinus nigra* subspecies and varieties is available from the IUCN red list of threatened species website, at: <http://dx.doi.org/10.2305/IUCN.UK.2013-1.RLTS.T42386A2976817.en>

5. Acknowledgements

460 We thank: O. Gilg, F. Rei, N. Turion and D. Vauthier (INRA UEFM, Avignon, France), J. Rousselet (INRA Orléans, France), E. Kakouris (Cyprus Forest Department, Nicosia, Cyprus), F. Krouchi (University of Tizi Ouzou, Algeria), G. Huber (Bavarian Office for Forest Seeding and Planting, Teisendorf, , Germany), S.C. Gonzalez-Martinez (formerly at National Institute for Agronomy, Madrid, Spain) and H. Sbay (Forest Research Centre, Rabat, Morocco) for sample collection. Collection of material was made before the Nagoya Protocol on Access to Genetic Resources and the Fair and Equitable Sharing of Benefits Arising from their Utilization to the Convention on Biological Diversity, was legally implement in Europe and by signatory countries.

465 6. Funding

470 This study was made possible by the financial support of the French Forest Service (Office National des Forêts) project “Programme global de conservation des populations françaises de pin de Salzmann”. We also acknowledge support for Sanger DNA sequencing from the French “Bibliothèque du Vivant” project and for SSR genotyping from the French Ministry of Agriculture – Irstea project 2015-339 “Déterminants de la vulnérabilité du pin laricio à la maladie des bandes rouges”. G. Giovannelli was financially supported by Aix-Marseille Université (Ecole Doctorale EDSE), France and the short-term scientific mission program of COST Action FP1202 while working on her PhD.

7. Author contribution

475 GG, BF and FG conceived the research, GG, AR and ISp produced the data, GG, IS and CSS analysed the data and GG, BF and CSS wrote the text. All authors revised and approved the final version of the manuscript.

8. References

- 480 Andren, H. (1994) Effects of Habitat Fragmentation on Birds and Mammals in Landscapes with Different Proportions of Suitable Habitat: A Review. *Oikos* 71: 355–366. <http://dx.doi.org/10.2307/3545823>
- Austerlitz, F., Mariette, S, Machon, N., Gouyon, P.H., Godelle, B. (2000) Effects of colonization processes on genetic diversity: differences between annual plants and tree species. *Genetics* 154:1309–1321.
- 485 Barbéro, M., Loisel, R., Quézel, P., Richardson, D.M. & Romane F. (1998). Pines of the Mediterranean Basin. In: Richardson DM (ed.) *Ecology and biogeography of Pinus*. Cambridge University Press, Cambridge, pp 153–170.
- 490 Barthe, S., Binelli, G., Héroult, B., Scotti-Saintagne, C., Sabatier, D., Scotti, I. (2017). Tropical rainforests that persisted: inferences from the Quaternary demographic history of eight tree species in the Guiana shield. *Molecular Ecology* 26: 1161-1174. <https://doi.org/10.1111/mec.13949>
- Conord, C., Gurevitch, J. & Fady, B. (2012). Large-scale longitudinal gradients of genetic diversity: a meta-analysis across six phyla in the Mediterranean basin. *Ecology and evolution* 2: 2600-2614. <https://doi.org/10.1002/ece3.350>
- 495 Cornuet, J.M., Pudlo, P., Veyssier, J., Dehne-Garcia, A., Gautier, M., Leblois, R., Marin, J.-M. & Estoup, A. (2014). DIYABC v2.0: a software to make approximate Bayesian computation inferences about population history using single nucleotide polymorphism, DNA sequence and

- microsatellite data. *Bioinformatics* 30: 1187–1189. <https://doi.org/10.1093/bioinformatics/btt763>
- 500 Dąbrowski, M.J., Pilot, M., Kruczyk, M., Żmihorski, M., Umer, H.M. & Gliwicz, J. (2014). Reliability assessment of null allele detection: inconsistencies between and within different methods. *Molecular Ecology Resources* 14: 361–373. <https://doi.org/10.1111/1755-0998.12177>
- Debazac, E.F. (1964). Le pin laricio de Corse dans son aire naturelle. *Revue Forestière Française*, 3, 188-215.
- 505 Earl, D.A. & vonHoldt B.M. (2012). STRUCTURE HARVESTER: a website and program for visualizing STRUCTURE output and implementing the Evanno method. *Conservation Genetics Resources* 4: 359–361. <https://doi.org/10.1007/s12686-011-9548-7>
- Eckert, A. J., & Hall, B. D. (2006). Phylogeny, historical biogeography, and patterns of diversification for *Pinus* (Pinaceae): phylogenetic tests of fossil-based hypotheses. *Molecular Phylogenetics & Evolution*, 40(1), 166-182. <https://doi.org/10.1016/j.ympev.2006.03.009>
- 510 Eliades, N.G.H., Gailing, O., Leinemann, L., Fady, B. & Finkeldey R. (2011). High genetic diversity and significant population structure in *Cedrus brevifolia* Henry, a narrow endemic Mediterranean tree from Cyprus. *Plant Systematics and Evolution* 294, 185–198. <https://doi.org/10.1007/s00606-011-0453-z>
- 515 Evanno, G., Regnaut, S. & Goudet, J. (2005). Detecting the number of clusters of individuals using the software STRUCTURE: a simulation study. *Molecular Ecology* 14: 2611–2620. <https://doi.org/10.1111/j.1365-294X.2005.02553.x>
- Excoffier, L. & Lischer, H.E. (2010). Arlequin suite ver 3.5: A new series of programs to perform population genetics analyses under Linux and Windows. *Molecular Ecology Resources* 10: 564–567. <https://doi.org/10.1111/j.1755-0998.2010.02847.x>
- 520 Fady, B. & Conord, C. (2010). Macroecological patterns of species and genetic diversity in vascular plants of the Mediterranean basin. *Diversity and Distributions* 16: 53–64. <https://doi.org/10.1111/j.1472-4642.2009.00621.x>
- Falush, D., Stephens, M. & Pritchard, J.K. (2003). Inference of population structure using multilocus genotype data: linked loci and correlated allele frequencies. *Genetics* 164: 1567–1587.
- 525 Farjon, A. (2010). *A Handbook of the World's Conifers*. Koninklijke Brill, Leiden, the Netherlands.
- Feurdean, A., Tămaş, T., Tanţău, I., & Fărcaş, S. (2012). Elevational variation in regional vegetation responses to late-glacial climate changes in the Carpathians. *Journal of Biogeography* 39: 258-271. <https://doi.org/10.1111/j.1365-2699.2011.02605.x>
- 530 Fukarek, P. (1958). Prilog poznavanju crnoga bora (*Pinus nigra* Arn.) / A contribution to the knowledge of black pine (*Pinus nigra* Arn.) / . *Rad. Poljopr. – Šumarsk. Fak. Univ. u Sarajevu* 3: 3–92.
- Futuyma, D.J. (2010). Evolutionary constraint and ecological consequences. *Evolution* 64: 1865-1884. <https://doi.org/10.1111/j.1558-5646.2010.00960.x>
- 535 García-Amorena, I., Rubiales, J.M., Amat, E.M., Iglesias González, R. & Gómez-Manzanaque, F. (2011). New macrofossil evidence of *Pinus nigra* Arnold on the Northern Iberian Meseta during the Holocene. *Review of Palaeobotany and Palynology* 163: 281–288. <https://doi.org/10.1016/j.revpalbo.2010.10.010>
- Gaussen, H. (1949). L'influence du passé dans la repartition des Gymnospermes de la Péninsule Iberique. *CR Congr Intern Geogra. Lisbonne*, 2, 805-825.
- 540 Gaussen, H., Haywood, V.H. & Chater, A.O. (1964). *Pinus*. In: *Flora Europaea*, Vol. 1 (ed. Tutin TG), pp. 32–35. Cambridge University Press, Cambridge, UK.
- Giovannelli, G., Roig, A., Spanu, I., Vendramin, G.G. & Fady B. (2017). A New Set of Nuclear

- 545 Microsatellites for an Ecologically and Economically Important Conifer: the European Black Pine (*Pinus nigra* Arn.). *Plant Molecular Biology Reporter* 35, 379–388. <https://doi.org/10.1007/s11105-017-1029-z>
- Goldstein, D.B., Pollock, D.D. (1997). Launching microsatellites: a review of mutation processes and methods of phylogenetic inference. *Journal of heredity*, 88(5), 335-342. DOI: 10.1093/oxfordjournals.jhered.a023114
- 550 Goudet, J. (2001). FSTAT, a program to estimate and test gene diversities and fixation indices (version 2.9. 3). <https://www2.unil.ch/popgen/softwares/fstat.htm>
- Guichoux, E., Garnier-Géré, P., Lagache, L., Lang, T., Boury, C. & Petit, R.J. (2013). Outlier loci highlight the direction of introgression in oaks. *Molecular Ecology* 22: 450–462. <https://doi.org/10.1111/mec.12125>
- 555 Hardy, O.J., Charbonnel, N., Fréville, H. & Heuertz, M. (2003). Microsatellite Allele Sizes: a simple test to assess their significance on genetic differentiation. *Genetics* 163: 1467–1482.
- Hardy, O.J. & Vekemans, X. (2002). SPAGeDi: a versatile computer program to analyze spatial genetic structure at the individual or population levels. *Molecular Ecology Notes* 2: 618–620. <https://doi.org/10.1046/j.1471-8286.2002.00305.x>
- 560 Hedrick, P.W. (2005). A standardized genetic differentiation measure. *Evolution* (N. Y). 59: 1633–1638. <https://doi.org/Doi.10.1554/05-076.1>
- Heuertz, M., Teufel, J., González-Martínez, S.C., Soto, A., Fady, B., Alía, R., & Vendramin, G.G. (2010). Geography determines genetic relationships between species of mountain pine (*Pinus mugo* complex) in Western Europe. *Journal of Biogeography*, 37(3), 541-556. <https://doi.org/10.1111/j.1365-2699.2009.02223.x>
- 565 Hewitt, G.M. (1999). Post-glacial re-colonization of European biota. *Biological journal of the Linnean Society*, 68(1-2), 87-112. <https://doi.org/10.1111/j.1095-8312.1999.tb01160.x>
- Isajev, V., Fady, B., Semerci, H. & Andonovski, V. (2004). EUFORGEN Technical Guidelines for genetic conservation and use for European black pine (*Pinus nigra*). International Plant Genetic Resources Institute, Rome, Italy.
- 570 Jakobsson, M. & Rosenberg, N.A. (2007). CLUMPP: a cluster matching and permutation program for dealing with label switching and multimodality in analysis of population structure. *Bioinformatics* 23(14): 1801–1806. <https://doi.org/10.1093/bioinformatics/btm233>
- Jost, L. (2008). GST and its relatives do not measure differentiation. *Ecology* 17: 4015–4026. <https://doi.org/10.1111/j.1365-294X.2008.03887.x>
- 575 Kalinowski, S.T. & Taper, M.L. (2006). Maximum likelihood estimation of the frequency of null alleles at microsatellite loci. *Conservation Genetics* 7: 991–995. <https://doi.org/10.1007/s10592-006-9134-9>
- 580 Kremer, A., Ronce, O., Robledo-Arnuncio, J.J., Guillaume, F., Bohrer, G., Nathan, R., Bridle, J.R., Gomulkiewicz, R., Klein, E.K., Ritland, K., Kuparinen, A., Gerber, S. & Schueler, S. (2012). Long-distance gene flow and adaptation of forest trees to rapid climate change. *Ecology Letters*, 15: 378-392. <https://doi.org/10.1111/j.1461-0248.2012.01746.x>
- Librado, P. & Rozas, J. (2009). DnaSP v5: a software for comprehensive analysis of DNA polymorphism data. *Bioinformatics* 25(11): 1451–1452. <https://doi.org/10.1093/bioinformatics/btp187>
- 585 Mac Arthur, R.H., Wilson, E.O. (1967). *The theory of island biogeography*. Princeton university press.
- Médail, F., Diadema, K. (2009). Glacial refugia influence plant diversity patterns in the Mediterranean Basin. *Journal of Biogeography* 36(7), 1333-1345. <https://doi.org/10.1111/j.1365-2699.2008.02051.x>

- 590 Meirmans, P. & Hedrick, P. (2011). Assessing population structure: FST and related measures. *Molecular Ecology Resources* 11: 5–18. <https://doi.org/10.1111/j.1755-0998.2010.02927.x>
- Mosca, E., Eckert, A.J., Liechty, J.D., Wegrzyn, J.L., La Porta, N., Vendramin, G.G. & Neale, D.B. (2012). Contrasting patterns of nucleotide diversity for four conifers of Alpine European forests. *Evolutionary Applications* 5(7): 762–775. <https://doi.org/10.1111/j.1752-4571.2012.00256.x>
- 595 Mossman, C.A. & Waser, P.M. (2001). Effects of habitat fragmentation on population genetic structure in the white-footed mouse. *Revue Canadienne de Zoologie* 79(2): 285–295. <https://doi.org/10.1139/z00-201>
- Naydenov, K.D., Naydenov, M.K., Alexandrov, A. et al. (2016). Ancient split of major genetic lineages of European black pine: evidence from chloroplast DNA. *Tree Genetics & Genomes* 12(68):1–18. <https://doi.org/10.1007/s11295-016-1022-y>
- 600 Naydenov, K.D., Naydenov, M.K., Alexandrov, A. et al. (2017). Ancient genetic bottleneck and Plio-Pleistocene climatic changes imprinted the phylogeography of European Black Pine populations. *European Journal of Forest Research* 136: 767–786. <https://doi.org/10.1007/s10342-017-1069-9>
- 605 Nei, M. (1973). Analysis of gene diversity in subdivided populations. *Proceedings of the National Academy of Sciences USA* 70: 3321–3323. <https://doi.org/10.1073/pnas.70.12.3321>
- Nikolić, D. & Tucić N. (1983). Isoenzyme variation within and among populations of European black pine (*Pinus nigra* Arn.). *Silvae Genetica* 32: 3–4.
- Nyman, C.F. (1879). *Conspectus florae Europaeae*. Orebro Suecia typis Officinae Bohlinianae.
- 610 Oosterhout, C.V., Hutchinson, W.F., Wills, D.P.M. & Shipley, P. (2004). MICRO-CHECKER: software for identifying and correcting genotyping errors in microsatellite data. *Molecular Ecology Resources* 4: 535–538. <https://doi.org/10.1111/j.1471-8286.2004.00684.x>
- Peakall, R. & Smouse, P.E. (2012). GenAIEx 6.5: Genetic Analysis in Excel. Population genetic software for teaching and research - an update. *Bioinformatics* 28(19): 2537–2539. <https://doi.org/10.1093/bioinformatics/bts460>
- 615 Petit, R.J., Aguinagalde, I., de Beaulieu, J.L., Bittkau, C., Brewer, S., Cheddadi, R., Ennos, R., Fineschi, S., Grivet, D., Lascoux, M., Mohanty, A., Müller-Starck, G., Demesure-Musch, B., Palmé, A., Martín, J.P., Rendell, S., Vendramin, G.G. (2003). Glacial Refugia: Hotspots But Not Melting Pots of Genetic Diversity. *Science* 300: 1563–1565. DOI: 10.1126/science.1083264
- 620 Pons, O. & Petit, R.J. (1996). Measuring and testing genetic differentiation with ordered vs. unordered alleles. *Genetics* 144: 1237–1245.
- Postigo-Mijarra, J.M., Morla, C., Barrón, E., Morales-Molino, C., García, S. (2010). Patterns of extinction and persistence of Arctotertiary flora in Iberia during the Quaternary. *Review of Palaeobotany and Palynology*, 162(3), 416–426. <https://doi.org/10.1016/j.revpalbo.2010.02.015>
- 625 Pritchard, J.K., Stephens, M. & Donnelly, P. (2000). Inference of population structure using multilocus genotype data. *Genetics* 155: 945–959.
- Pyhäjärvi T, García-Gil MR, Knürr T, Mikkonen M, Wachowiak W, Savolainen O (2007) Demographic history has influenced nucleotide diversity in European *Pinus sylvestris* populations. *Genetics* 177: 1713–1724. <https://doi.org/10.1534/genetics.107.077099>
- 630 R Core Team, (2015) R: A language and environment for statistical computing. R Foundation for Statistical Computing, Vienna, Austria. URL <https://www.R-project.org/>.
- Rafii, Z.A. & Dodd, R.S. (2007). Chloroplast DNA supports a hypothesis of glacial refugia over postglacial recolonization in disjunct populations of black pine (*Pinus nigra*) in Western Europe. *Molecular Ecology* 16: 723–736. <https://doi.org/10.1111/j.1365-294X.2006.03183.x>

- 635 Raymond, M., Rousset, F. (1995). An exact test for population differentiation. *Evolution*, 49(6), 1280-1283. <https://doi.org/10.1111/j.1558-5646.1995.tb04456.x>
- Riginos, C. & Liggins, L. (2013). Seascape genetics: populations, individuals, and genes marooned and adrift. *Geography Compass* 7: 197–216. <https://doi.org/10.1111/gec3.12032>
- 640 Robledo-Arnuncio, J.J., Collada, C., Alía, R. & Gil, L. (2005). Genetic structure of montane isolates of *Pinus sylvestris* L. in a Mediterranean refugial area. *Journal of Biogeography* 32: 595–605. <https://doi.org/10.1111/j.1365-2699.2004.01196.x>
- Rodrigo, A., Retana, J. & Pico, X. (2004). Direct regeneration is not the only response of Mediterranean forests to largest fires. *Ecology* 85: 716–729. <https://doi.org/10.1890/02-0492>
- Roman-Amat, B. & Arbez, M. (1986). Pins laricio de Corse et de Calabre, quelles provenances choisir? *Revue Forestière Française* 37: 377-388.
- 645 Rosenberg, N.A. (2004). Distruct: a program for the graphical display of population structure. *Molecular Ecology Notes* 4: 137–138. <https://doi.org/10.1046/j.1471-8286.2003.00566.x>
- Rousset, F. (2008). GENEPOP'007: A complete re-implementation of the GENEPOP software for Windows and Linux. *Molecular Ecology Resources* 8: 103–106. <https://doi.org/10.1111/j.1471-8286.2007.01931.x>
- 650 RStudio Team (2016). RStudio: Integrated Development for R. RStudio, Inc., Boston, MA URL <http://www.rstudio.com/>.
- Rubio-Moraga, A., Candel-Perez, D., Lucas-Borja, M.E., Tíscar, P.A., Viñegla, B., Linares, J.C., Gómez-Gómez, L. & Ahrazem, O. (2012). Genetic Diversity of *Pinus nigra* Arn. Populations in Southern Spain and Northern Morocco Revealed By Inter-Simple Sequence Repeat Profiles. *International Journal of Molecular Sciences* 13: 5645–5658. DOI:10.3390/ijms13055645
- 655 Tóth, E.G., Vendramin, G.G., Bagnoli, F. Cseke K, Höhn M (2017). High genetic diversity and distinct origin of recently fragmented Scots pine (*Pinus sylvestris* L.) populations along the Carpathians and the Pannonian Basin. *Tree Genetics & Genomes* 13: 47. <https://doi.org/10.1007/s11295-017-1137-9>
- 660 Vendramin GG, Lelli L, Rossi P, Morgante M (1996) A set of primers for the amplification of 20 chloroplast microsatellites in Pinaceae. *Molecular Ecology* 5: 595–598. <https://doi.org/10.1046/j.1365-294X.1996.00111.x>
- Vernet, J.L. (1986). Travertins et végétations holocènes méditerranéennes. *Méditerranée*, 57(1): 25–29.
- 665 Vernet, J.L., Badal, E. & Grau E. (1983). La végétation néolithique du sud-est de l'Espagne (Valence, Alicante) d'après l'analyse anthracologique. *C. R. Acad. Sc. Paris*, 296, III, 669–672.
- Vidaković, M. (1974). Genetics of European black pine (*Pinus nigra* Arn.). *Annales Forestales* 6: 57–86.
- 670 Young, A., Boyle, T. & Brown, T. (1996). The population genetic consequences of habitat fragmentation for plants. *Trends in Ecology & Evolution* 11: 413–418. [https://doi.org/10.1016/0169-5347\(96\)10045-8](https://doi.org/10.1016/0169-5347(96)10045-8)