



HAL
open science

Historical regularities of agrarian confrontation on the outskirts of Quito (Ecuadorian Andes)

Pierre Gasselin

► **To cite this version:**

Pierre Gasselin. Historical regularities of agrarian confrontation on the outskirts of Quito (Ecuadorian Andes). *Agricultures de firme: identification, caractérisation*, Ecole Nationale Supérieure Agronomique de Toulouse (INPT - ENSAT). Toulouse, FRA., Dec 2014, Toulouse, France. pp.19 vues. hal-02793547

HAL Id: hal-02793547

<https://hal.inrae.fr/hal-02793547>

Submitted on 5 Jun 2020

HAL is a multi-disciplinary open access archive for the deposit and dissemination of scientific research documents, whether they are published or not. The documents may come from teaching and research institutions in France or abroad, or from public or private research centers.

L'archive ouverte pluridisciplinaire **HAL**, est destinée au dépôt et à la diffusion de documents scientifiques de niveau recherche, publiés ou non, émanant des établissements d'enseignement et de recherche français ou étrangers, des laboratoires publics ou privés.

Historical regularities of agrarian confrontation on the outskirts of Quito (Ecuadorian Andes)

Pierre Gasselin

INRA-SAD, UMR Innovation

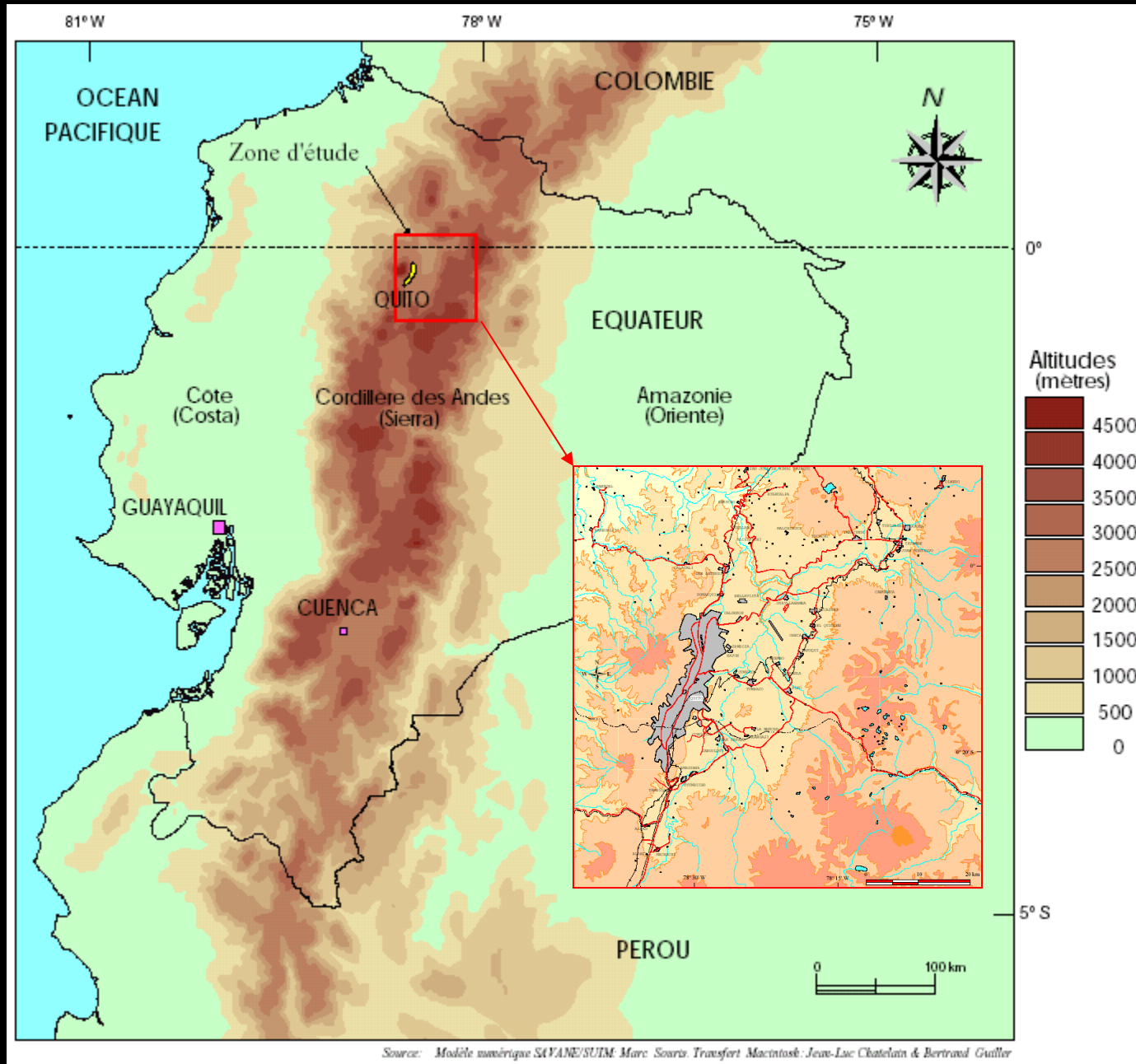
International symposium

« Firm Agricultures. Identification – Characterisation »

10-12 décembre 2014, Toulouse



A mountain farming under the influence of a metropolis

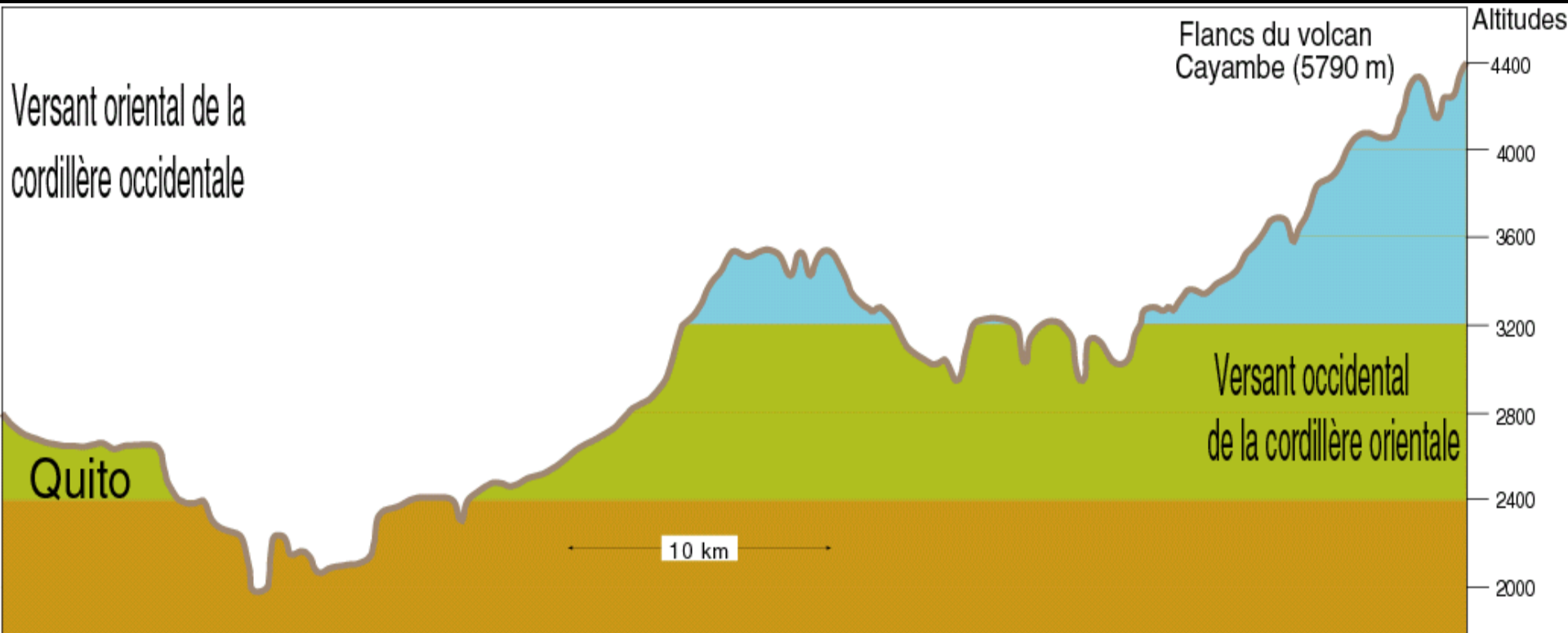








Partitioning and complementary of altitudinal levels in the cultivated ecosystem

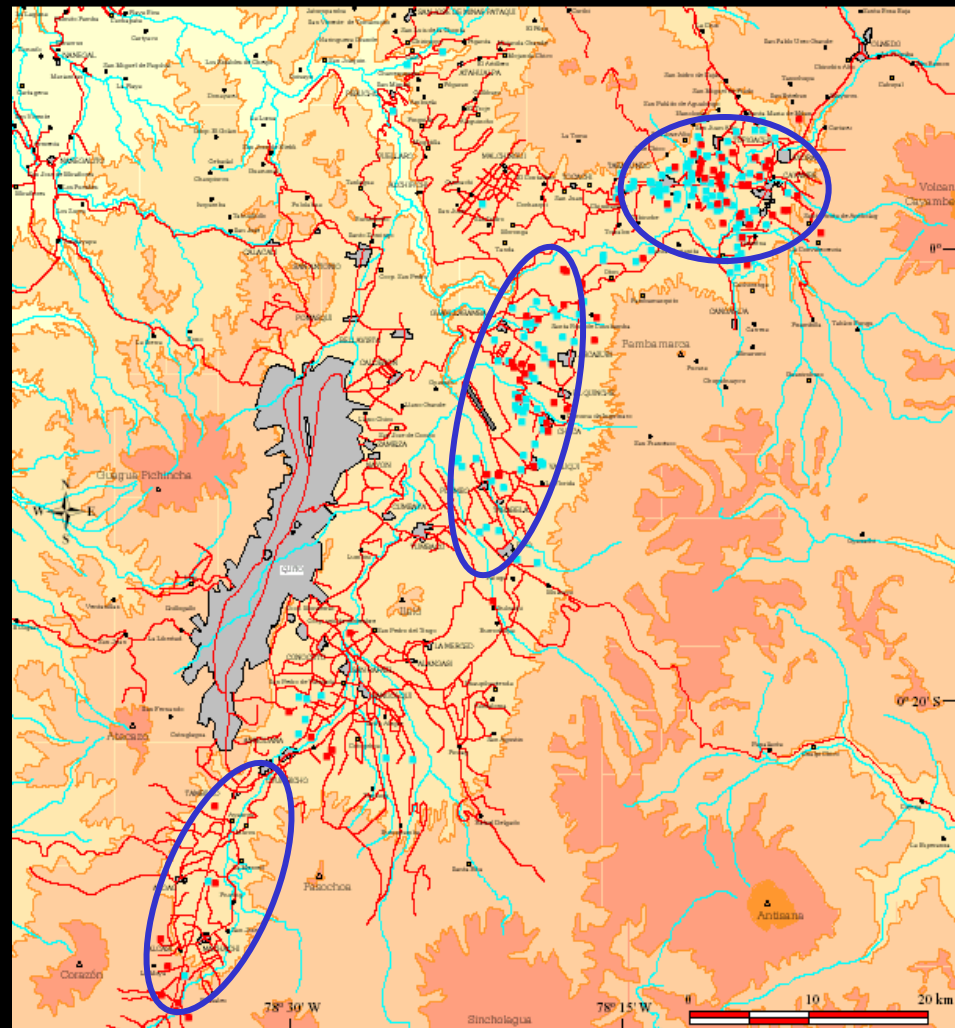




Peasant irrigation on steep slopes (foreground) and the fields of flower plantations : an access to land differentiated (Guayllabamba)



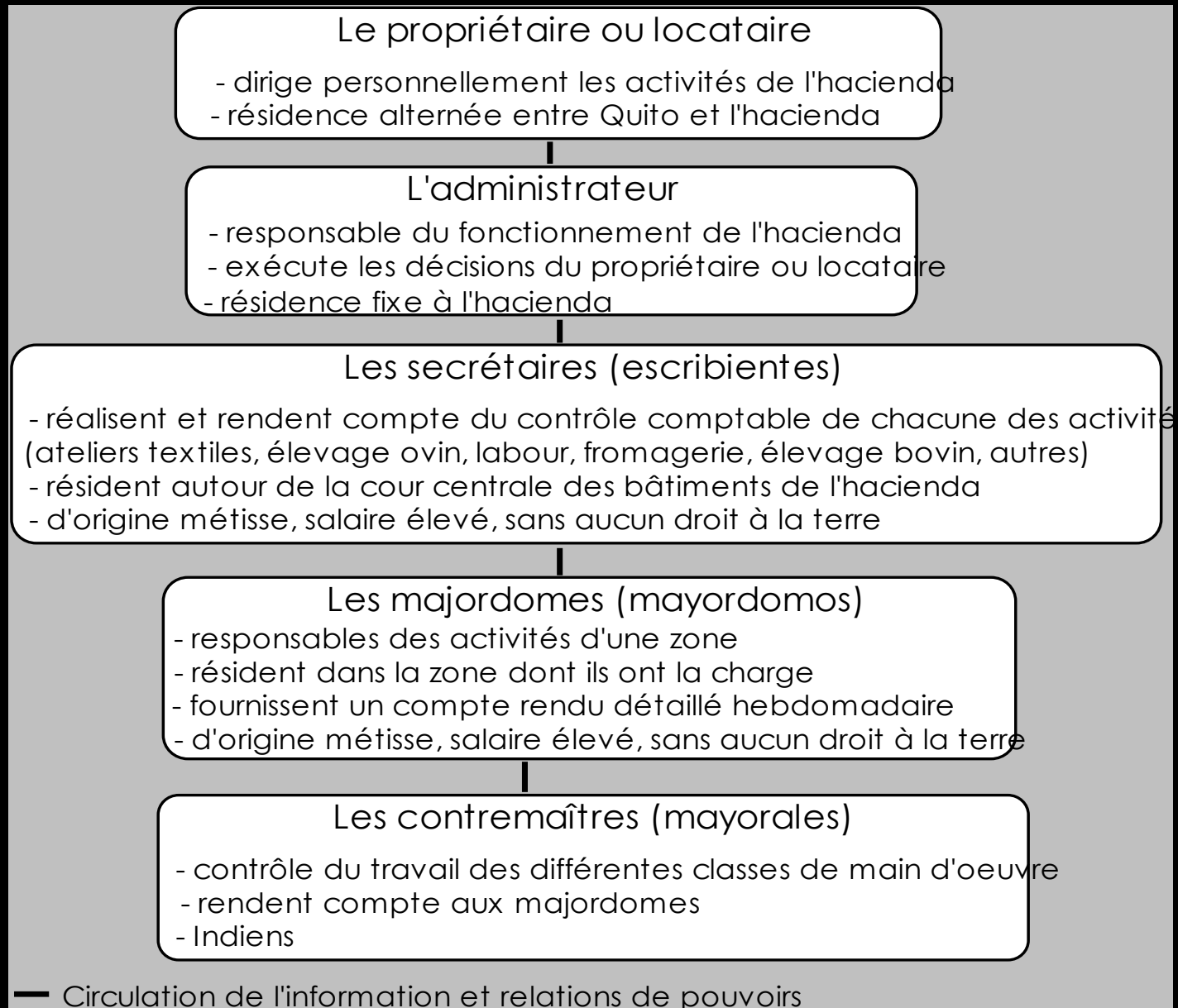
*From the ecological floor
to the socio-economic floor*



A Taylorist organization for peasant workers, often young and female, chosen for her docility and her meticulousness



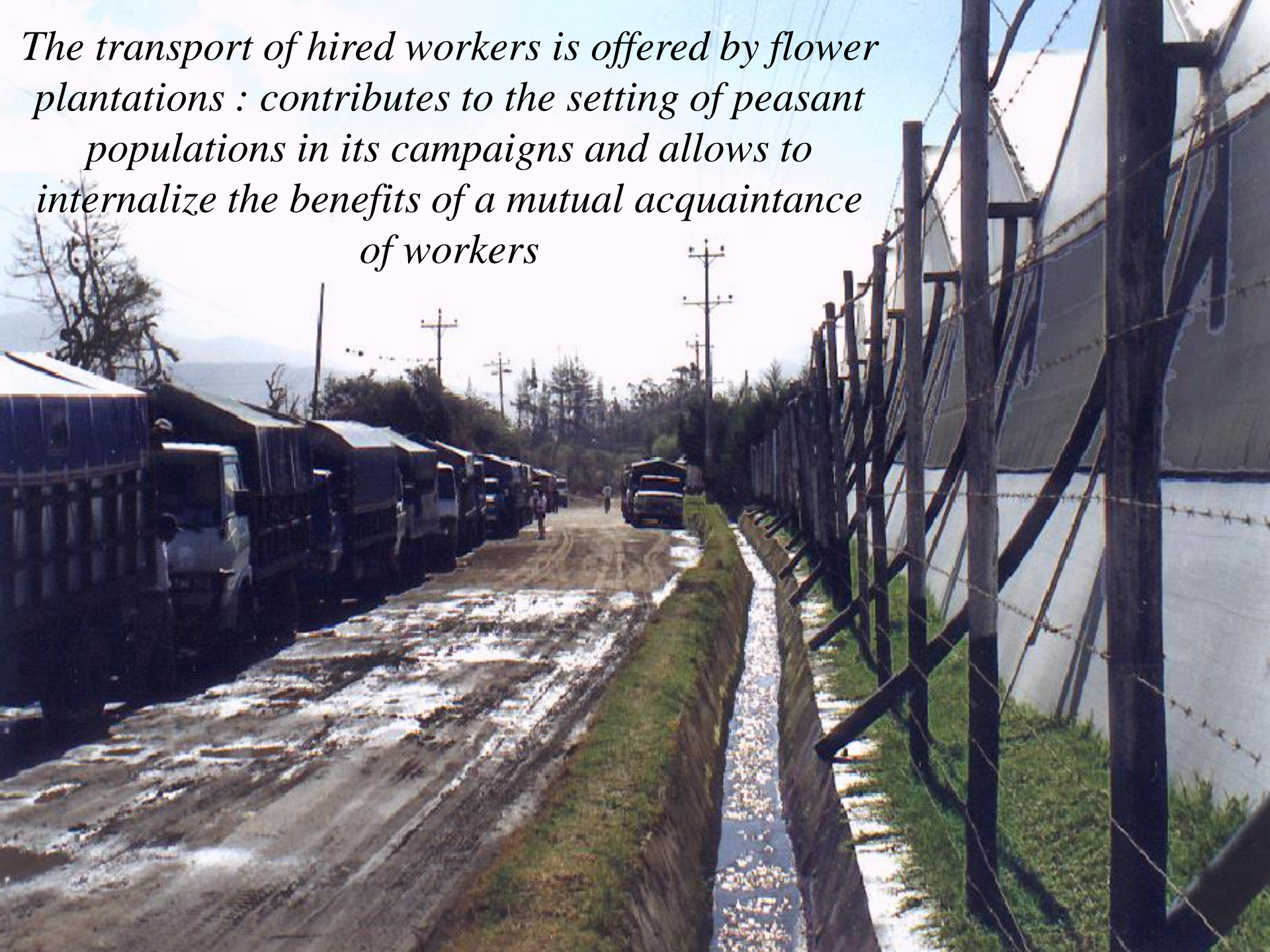
Flowchart of the administration of the hacienda in the eighteenth century



Strong work hierarchy, paternalism and a high concentration of capital



The transport of hired workers is offered by flower plantations : contributes to the setting of peasant populations in its campaigns and allows to internalize the benefits of a mutual acquaintance of workers





*The binomial
[semi-enslaved workers /
hacienda owner]
has become a cleavage
[minifundist farmers /
capitalists producers]*

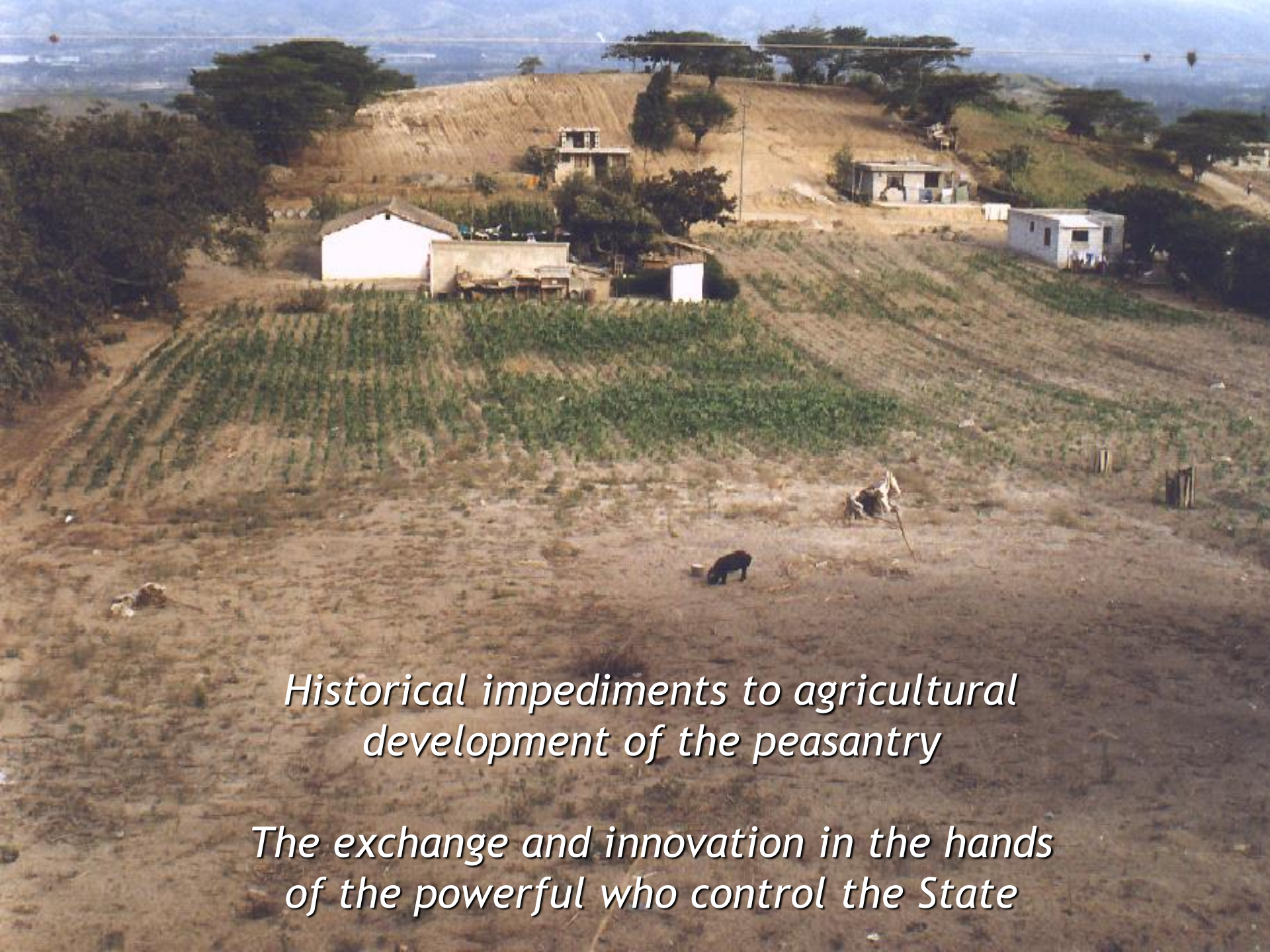
- *Paternalistic supervision of rural workers by the owners of large production units*
- *Organization of peasant surplus labor*
- *Hierarchical division of labor and of the social statuses in the hacienda and now in the plantation*
- *Polarized relations between, on the one hand, peasant communities and, on the other hand, the latifundia and today the firm*



*Harvesting potatoes
on the slopes near
from Quito*

*Night lighting of a
field of flowers*





*Historical impediments to agricultural
development of the peasantry*

*The exchange and innovation in the hands
of the powerful who control the State*

An exemplary situation



Conclusion (1 / 2)

- No qualms about dual categorization
- A point of view (theory and epistemological posture)
- To study the coexistence in order to test hypotheses:
 - There are no exceeded previous forms, any more than homogenization
 - Diversity of models fosters innovation and adaptation
 - The coexistence of situations are the expression of the loss of hegemony of the dominant agricultural model
 - The study of margins, extreme farming, help to explain the exclusions and sense of innovation

Conclusion (2/2)

- Questions and theoretical anchors
 - An analysis of categories (scientific, political, identity)
 - An interactionist analysis
 - An regulationist analysis
 - Pathway transitions theory and socio-technical regime
 - An analysis of comparative efficiencies
 - An analysis by the study of controversies
 - Etc.



¡Gracias!

