



**HAL**  
open science

## **Modelling land use changes in the Democratic Republic of Congo 2000-2030. A report by the REDD-PAC project.**

A. Mosnier, R. Mant, J. Pirker, B. Bodin, R. Ndinga, P. Tonga, P. Havlik, Géraldine Bocquého, P. Maukonen, M. Obersteiner, et al.

### ► **To cite this version:**

A. Mosnier, R. Mant, J. Pirker, B. Bodin, R. Ndinga, et al.. Modelling land use changes in the Democratic Republic of Congo 2000-2030. A report by the REDD-PAC project.. [Contract] 2015. <hal-02793981>

**HAL Id: hal-02793981**

**<https://hal.inrae.fr/hal-02793981v1>**

Submitted on 5 Jun 2020

**HAL** is a multi-disciplinary open access archive for the deposit and dissemination of scientific research documents, whether they are published or not. The documents may come from teaching and research institutions in France or abroad, or from public or private research centers.

L'archive ouverte pluridisciplinaire **HAL**, est destinée au dépôt et à la diffusion de documents scientifiques de niveau recherche, publiés ou non, émanant des établissements d'enseignement et de recherche français ou étrangers, des laboratoires publics ou privés.



Distributed under a Creative Commons CC BY-SA 4.0 - Attribution - ShareAlike - International License



# Modelling future land use changes in the Democratic Republic of Congo

# 2000–2030

A Report by the REDD-PAC project



Supported by:



based on a decision of the German Bundestag



Land use is a crucial factor in both economic development and the environment. Land dedicated to agriculture allows regular production which benefits nearby populations, meeting their food needs, and potentially benefits the economy as a whole. On the other hand, agricultural land has a much lower carbon content than forest land and is generally poorer in biodiversity. Land can be used in different ways to achieve different goals and it may be difficult to achieve all goals at the same time, which means making difficult choices when designing policies.

The Democratic Republic of Congo (DRC) is the largest and most populated country of Central Africa. Humid dense forests cover 114 million hectares which represent half the DRC territory. According to the United Nations forecast, DRC will become the tenth most populated country in the world by the end of the century with more than 200 million inhabitants. Considerable efforts will be needed to improve livelihoods without exhausting the large natural resources of the country. DRC has been a pioneer in the initiative for reducing emissions from deforestation and forest degradation plus the conservation of forest carbon stocks, sustainable management of forests and enhancement of forest carbon stocks (REDD+). It has been the first African country to get its REDD+ preparation plan approved in 2010.

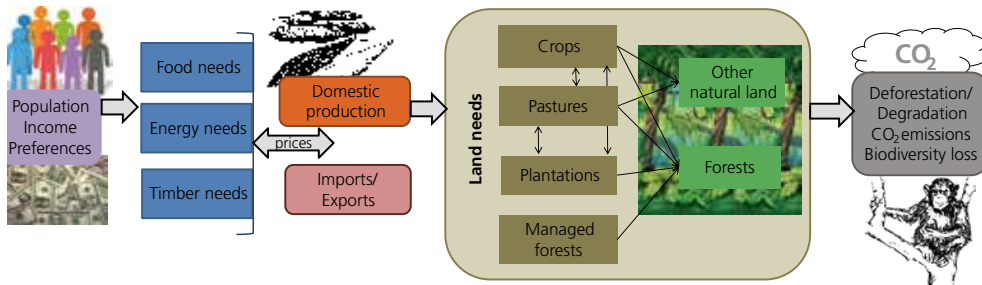
This study is intended to assist institutions involved in REDD+ and the planning of National Strategies and Action plans for Biodiversity in DRC by attempting to identify the areas under the greatest conversion pressures in the future and the consequences in terms of agricultural production, greenhouse gas emissions and biodiversity loss.



## A modelling approach

Models make it possible to explore the consequences of future changes in a simplified context. The REDD–PAC project adapted the GLOBIOM ([www.globiom.org](http://www.globiom.org)) model to the Congo Basin context. The GLOBIOM model is a global economic model which represents land use competition between the agricultural sector, the forestry sector and the bioenergy sector. The simulation period is 2000–2030, the first 2000–2010 period enables testing of the model's capacity to reproduce past trends.

Deforestation is modelled on the basis of changes in production and consumption for all countries at the same time. Thus, we can more easily verify the validity and consistency of estimates and avoid an artificial increase in future deforestation unrelated to changes in demand. The spatial resolution of the results allows for consistency in deforestation calculated at sub-national level with deforestation calculated at national level, as well as enabling heterogeneity of carbon and biodiversity to be taken into account.

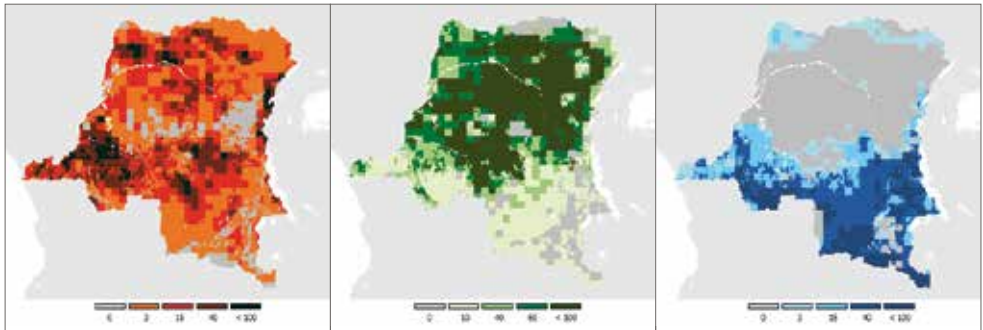


General overview of the GLOBIOM model

## Adaption of the GLOBIOM model to the Democratic Republic of Congo

The DRC forms part of the COMIFAC region in the model. DRC can trade with other COMIFAC sub–regions – Cameroon, Congo, the West, the North, and the East – and can also trade with other regions of the world. Agricultural production and the changes in land uses are represented in 1190 spatial units.

In order to develop high quality models it is important to have a good representation of the starting situation. Whilst agriculture is the main reason for deforestation, there is considerable uncertainty as to the current location of agricultural land among existing land cover maps for DRC and in the absence of recent data collection, the reliability of available agricultural statistics is also questionable. A hybrid map has been created using the best existing land cover maps after consulting with local experts and available agricultural statistics.

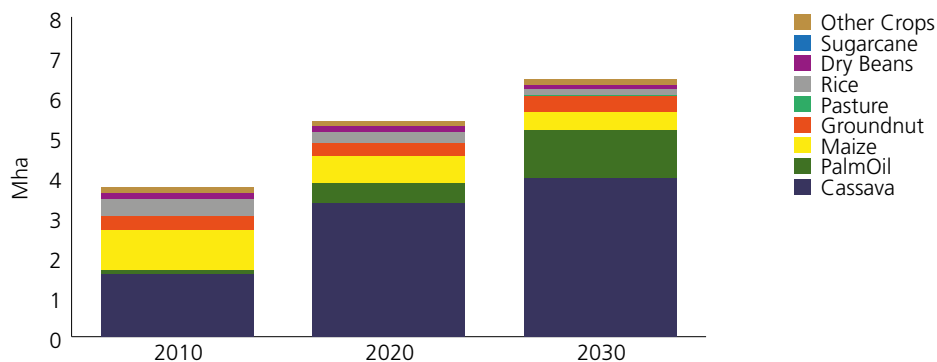


Hybrid vegetation map: share in % of units occupied by cultivated land (on the left), dense forests excluding flooded forests (in the centre) and dry forests (to the right)

## Future deforestation

According to conservative projections, close to 105 million people will be living in DRC countries in 2030, with a strong increase in urban populations and average per capita GDP. A larger and richer population generates an increase in local consumption of agricultural products which is translated into an increase in cultivated areas.

Our results show increasing deforestation from 374 000 hectares per annum over 2000–2010 to 643 000 hectares per annum over 2020–2030. This leads to the emission of 7 gigatons CO<sub>2</sub> over 2010–2030. Two thirds of the calculated deforestation is explained by the expansion of cassava and the fallow land associated. Oil palm explains 15 % of total deforestation. Increase in imports and expansion of agricultural land in non-forest types of vegetation reduce the impact on forests of increased local demand but could create other problems.

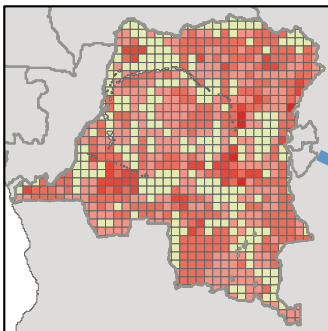


Deforestation dynamics by cause in DRC between 2010 and 2030 in the base scenario.

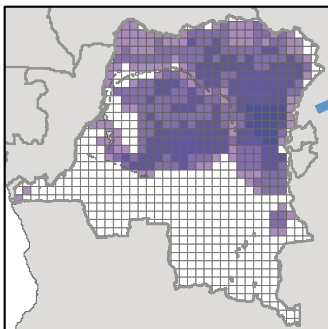
## Impacts on biodiversity

DRC is home to four species of Great Apes, the chimpanzee, bonobo, mountain gorilla and the lowland gorilla, which are very dependent on the presence of natural forests for their habitat. They are also species that are potentially a great attraction for the development of ecotourism. The model forecasts a particularly substantial loss of habitat for Great Apes in the eastern region of the DRC. In addition to the direct loss of habitat, the expansion of agricultural areas will lead to an increase in contacts between wildlife and human thus increasing poaching risks.

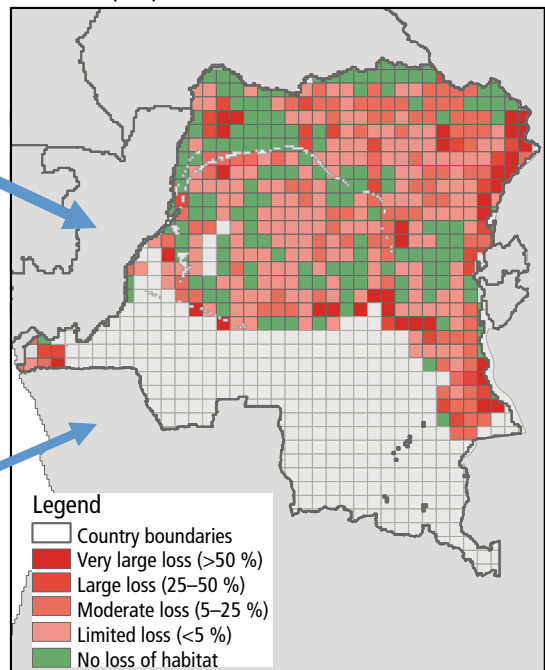
Modelled distribution of deforestation (2010–2030) in the base scenario



Great Apes potential habitat in 2010



Modelled impacts of land use change on Great Apes potential habitat



Modelling of the impact of deforestation on the potential habitat for Great Apes

## What factors can reduce or increase future deforestation?

Cumulated deforestation over the 2010–2030 period varies between 8 and 13 million hectares in the scenarios retained versus 11 million hectares in the base scenario. Improved crops yields, an increase in protected areas and reduced growth in population and GDP could reduce deforestation, whereas expansion of uncontrolled agriculture in protected areas or forestry concessions, and a stronger increase in population and GDP increase deforestation in relation to the base scenario.

BAU	Other Scenarios		
<p><b>Macro</b></p> <ul style="list-style-type: none"> <li>■ 105 million inhabitants in 2030</li> <li>■ GDP: \$ 42 billions in 2030</li> </ul> <p><b>Permanent forest domain</b></p> <ul style="list-style-type: none"> <li>■ No expansion of agriculture into protected areas</li> <li>■ No expansion of agriculture into forest concessions</li> </ul> <p><b>Agriculture</b></p> <ul style="list-style-type: none"> <li>■ No increase of agricultural yields</li> </ul>	<p><b>Socio-economic context in DRC</b></p> <p><b>Macro +</b> + 9 million inhabitants in 2030 + \$ 4,5 billions of GDP in 2030</p> <p><b>Macro –</b> – 8 million inhabitants – \$ 10 billions of GDP in 2030</p>	<p><b>Permanent forest domain</b></p> <p><b>NoPA</b> Expansion of agriculture into protected areas possible</p> <p><b>NoFC</b> Expansion of agriculture into forest concessions possible</p> <p><b>PA +</b> Protection and expansion of protected areas to 17 % of territory</p>	<p><b>Agricultural Development</b></p> <p><b>Yields +</b> Increase of future agricultural yields</p> <p><b>Palm +</b> Objective of 250,000 ha of oil palm in Congo-Brazzaville and 300,000 ha in Cameroon in 2030</p>

The main hypotheses within the Base scenario are described on the left and changes made to these assumptions in each scenario are presented on the right (one scenario by white box).

## What factors can reconcile several objectives?

Increased agricultural productivity could reconcile agricultural development, climate change mitigation and biodiversity conservation. On the contrary, the combination of stronger economic growth and stronger population growth leads to deterioration of all of our indicators. Failure to respect protected areas leads to little economic gain compared to the negative impacts on emissions and biodiversity. Forest concessions can also help prevent deforestation in the future. For the expansion of protected areas, although there is a decrease in deforestation, this leads to higher emissions in our results due to the displacement of deforestation into carbon rich forests when more natural land is protected.

Comparison of scenarios in respect to their contribution to several objectives (the green colour indicates progress towards the achievement of an objective whilst the red indicates a greater distance from the objective).

	Economic Development and Food Security		Climate Change mitigation		Conservation and sustainable use of biodiversity	
	Calories produced by inhab. <sup>a</sup>	Net agricultural imports <sup>b</sup>	Total emissions <sup>c</sup>	Emissions from deforestation <sup>d</sup>	Loss of habitat of large primates <sup>e</sup>	Number of species losing >10 % of their habitat <sup>f</sup>
BAU	2592	-6919	7802	7243.0	6.4 %	336
+MACRO	-2,3 %	14,8 %	14,7 %	15,2 %	14,4 %	14,6 %
-MACRO	-2,4 %	-25,3 %	-18,1 %	-18,2 %	16,9 %	-10,5 %
No PA	0,5 %	-1,9 %	1,5 %	-0,9 %	7,8 %	15,5 %
No FC	0,5 %	-1,0 %	7,7 %	6,8 %	4,5 %	4,2 %
+ PA	-4,6 %	6,9 %	15,1 %	12,8 %	5,1 %	-89,9 %
+ Yields	24,8 %	-26,8 %	-30,5 %	-31,3 %	-28,7 %	-14,3 %
+ Palm	-0,1 %	0,2 %	-0,1 %	-0,1 %	-0,1 %	0,0 %

a) production of calories in kcal per inhabitant per annum in 2030 on the basis of the crops represented in the model, b) value of imports of agricultural products in 1000 USD in 2030 on the basis of the crops represented in the model, c) total emissions from the agricultural sector and changes in land uses in Megatons CO<sub>2</sub> between 2010 and 2030, d) total emissions from deforestation in Megatons CO<sub>2</sub> between 2010 and 2030, e) proportion of the area of the potential habitat of large primates converted to other uses between 2010 and 2030, f) number of species among 1698 species considered that lose more than 10 % of their potential habitat within the country between 2010 and 2030.

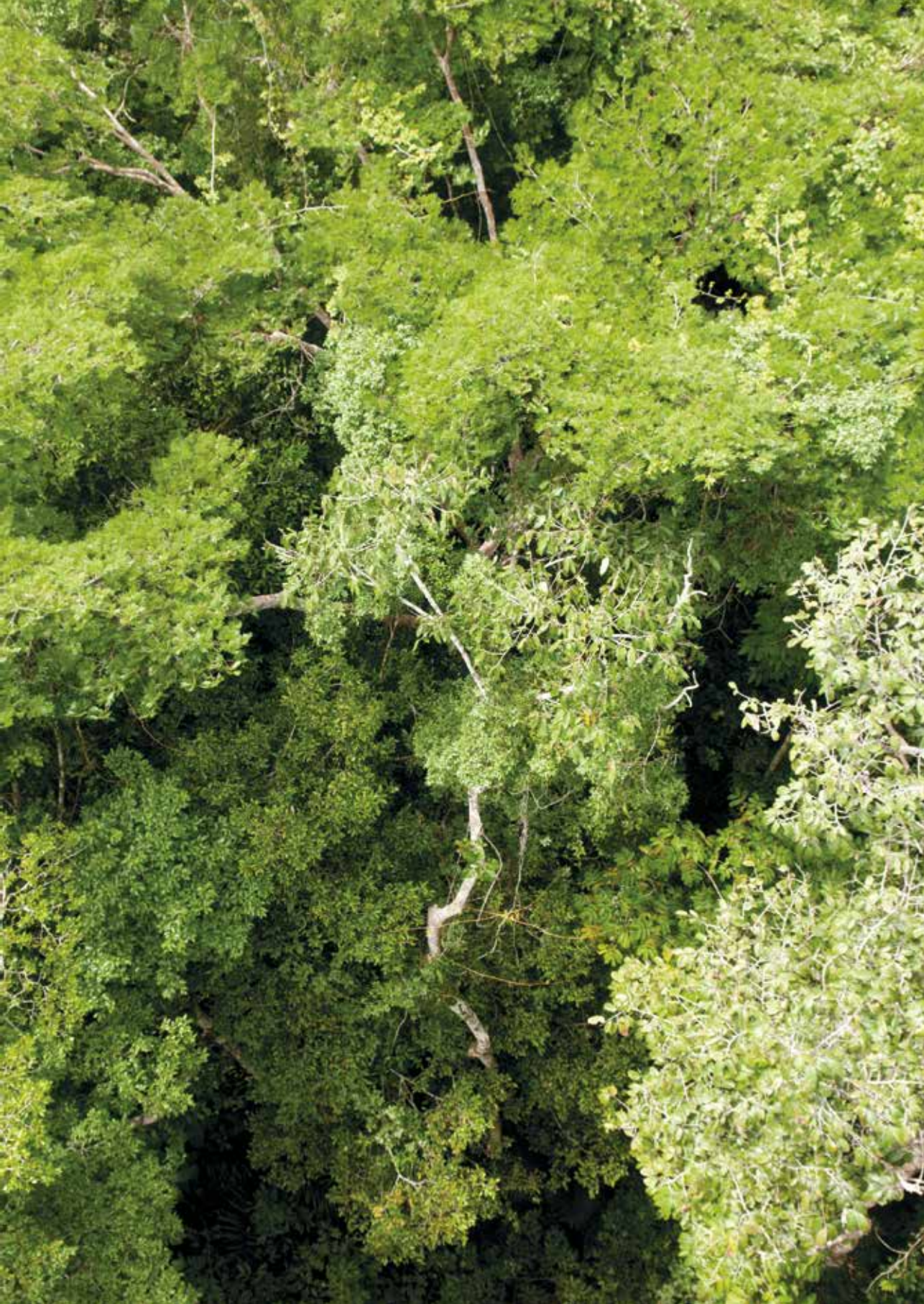
## Conclusion

The results of this study show that over the 2010–2030 period, future deforestation could lead to the emission of 7 gigatons of CO<sub>2</sub> and 300 species to lose more than 10 % of their potential habitat within the region, including 42 threatened species.

By comparing the results of several scenarios, we observe that a lower population growth and higher agricultural yields could reconcile agricultural development, climate change mitigation and sustainable use of biodiversity. For agricultural yields, the weakness of statistics in the agricultural sector in DRC makes the implementation of effective policies. It is important to invest in a system to collect and regularly update statistics on population and agriculture in order to allow a careful diagnosis on current obstacles for agricultural intensification.

Our results show that strong economic growth could have negative impacts on the environment through increased demand for agricultural and forest products. In actual fact, everything depends on how the fruits of economic growth are used. Stronger economic growth may also create jobs outside the agricultural sector and be favourable to the dissemination of innovative technologies for increasing land productivity.

Finally, the results of this study show the importance of effective management of protected areas for the protection of species and so the prevention of species' extinction which is one of the objectives of the Convention on Biological Diversities' strategic plan for 2011–2020. While resources are lacking for efficiently protecting existing protected areas, these results confirm the importance of financial and technical support to existing protected areas.





REDD<sup>pac</sup>

[www.redd-pac.org](http://www.redd-pac.org)

## CREDITS

### The REDD-PAC Project Team

COMIFAC: Martin Tadoum, Chouaibou Nchoutpouen,  
Peguy Tonga, Adeline Makoudjou, Didier Bokelo Bile,  
Roland Gyscard Ndinga

IIASA: Aline Mosnier, Michael Obersteiner, Florian Kraxner,  
Johannes Pirker, Géraldine Bocqueho, Petr Havlík

UNEP-WCMC: Rebecca Mant, Blaise Bodin, Andy Arnell,  
Valerie Kapos

### Institutions

COMIFAC: Central African Forest Commission

IIASA: International Institute for Applied Systems Analysis

UNEP-WCMC: United Nations Environment Programme,  
World Conservation Monitoring Centre

### Financial Support for REDD-PAC Project

International Climate Initiative (IKI), German Federal Ministry for  
the Environment (BMUB)

